

T-20-S, R-27-W
T-19-S, R-27-W

See "Recorded Information" below for the file location of acquired property as recorded in the Office of the County Circuit Clerk

JOB NUMBER	FEDERAL AID PROJECT NUMBER	SHT. NO.	TOTAL SHTS.
030313	RIGHT OF WAY	10	18
030313	CONSTRUCTION		

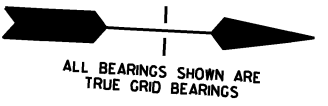
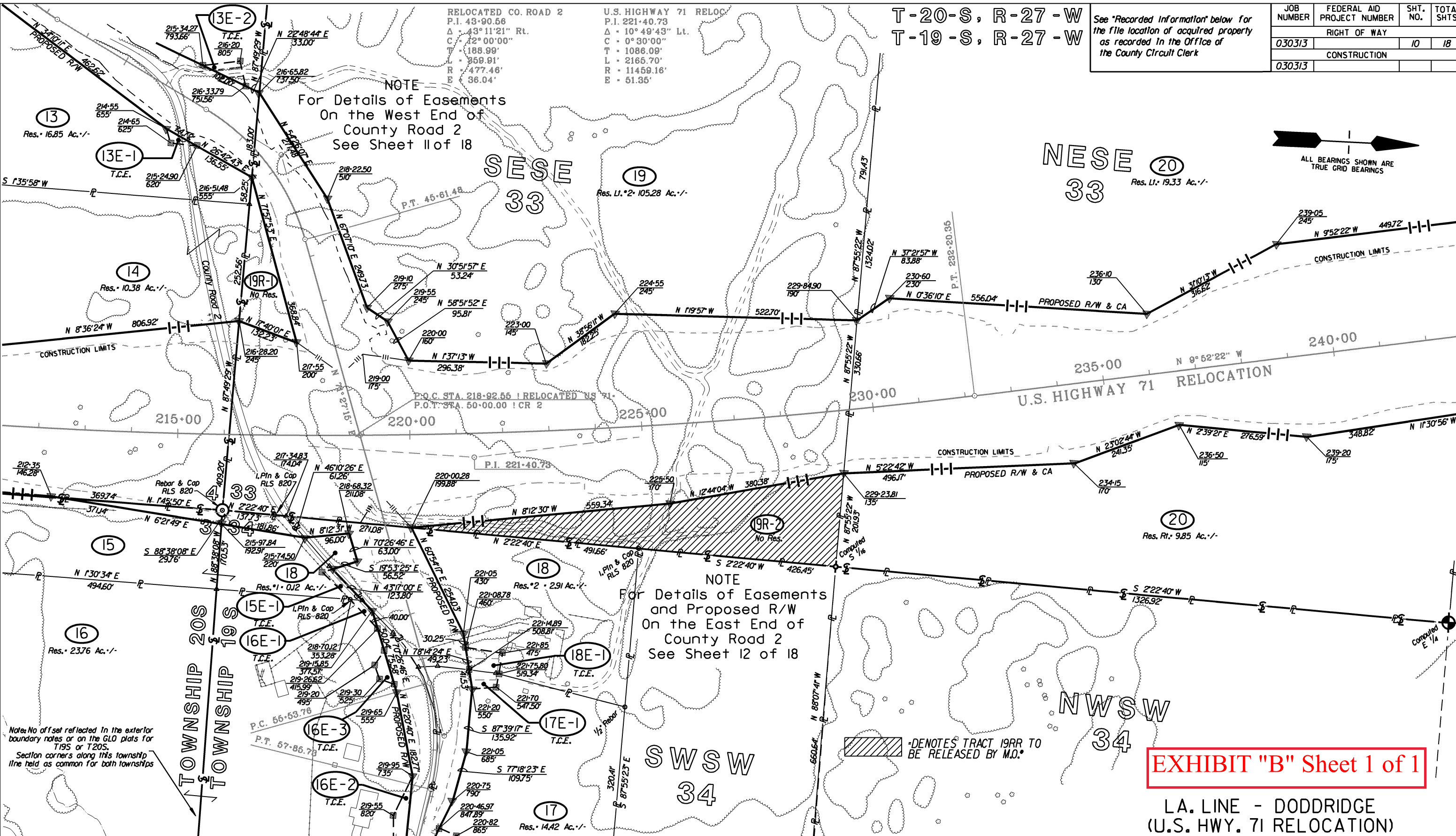
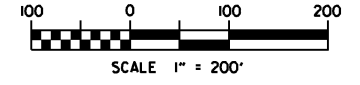


EXHIBIT "B" Sheet 1 of 1

L.A. LINE - DODDRIDGE
(U.S. HWY. 71 RELOCATION)
ARKANSAS STATE HIGHWAY COMMISSION
RIGHT OF WAY MAP
JOB 030313 MILLER CO.



RECORDED INFORMATION	TRACT	OWNERSHIP	TITLE	PARCEL AREA IN ACRES	TO ACQUIRE	PARCEL AREA IN SQ. FT.	TO ACQUIRE	REMARKS
	19R-2	Gonzalez Family Living Trust et al	44 Rev.	1.94	1.94	84,301	84,301	
	19R-1	Gonzalez Family Living Trust et al	44 Rev.	0.46	0.46	19,803	19,803	
	20	Charlie Ratcliff, Jr. & Ladell Ratcliff, H/W	43	40.31	1113	1,755,670	485,011	
	19	Gonzalez Family Living Trust et al	44 Rev.	120.75	13.07	5,259,680	569,403	

NO.	DATE	DESCRIPTION	BY	CK'D
4	6-06-19	Added area released by M.O.	DJH	DJH
3	5-12-09	Added TCE 16E-3	JLB	
2	4-13-09	Added Trs. 19R-1 & 19R-2	DJH	DJH
1	1-5-09	Revised Ownership Tr. 19	PER	

DATE DESIGNED: 4-08 REVISIONS
DESIGNED BY: G. Kight, PLS REVIEWED BY: J. Barr, PE MICROFILM REVISIONS

PREPARED BY:
Florence & Hutcherson, Inc.
CONSULTING ENGINEERS
1608 WEST MARKHAM STREET
SUITE 101
LITTLE ROCK, ARKANSAS 72606
TEL: (501) 945-7115 FAX: (501) 945-7144