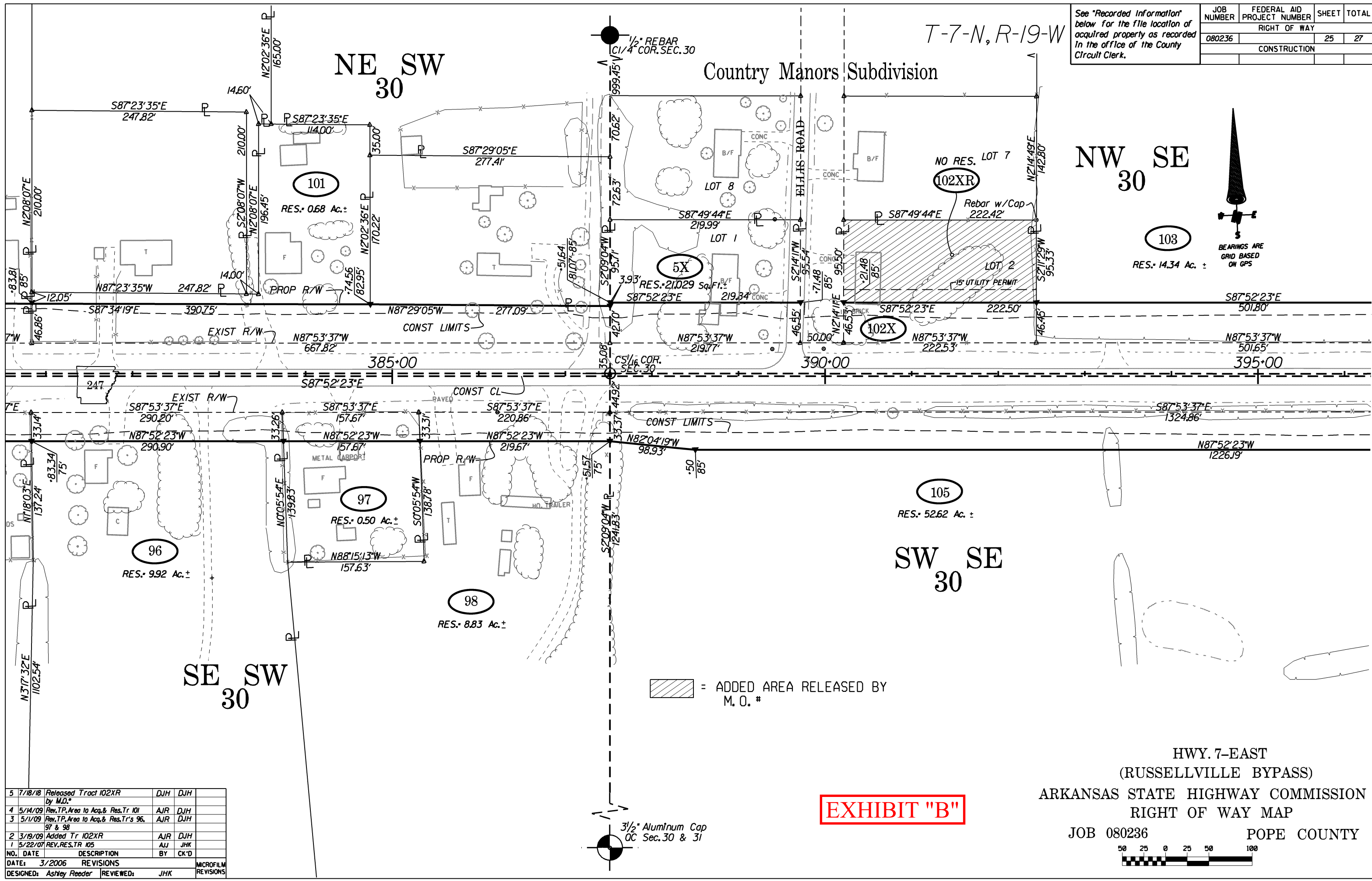
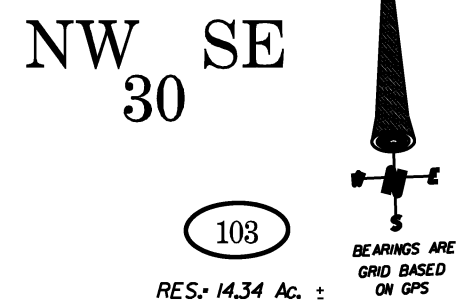


JOB NUMBER	FEDERAL AID PROJECT NUMBER	SHEET	TOTAL
080236		25	27
RIGHT OF WAY			
CONSTRUCTION			



T-7-N, R-19-W

NE SW 30

Country Manors Subdivision

NW SE 30

SW SE 30

SE SW 30

▨ = ADDED AREA RELEASED BY M.O.#

**EXHIBIT "B"**

HWY. 7-EAST  
(RUSSELLVILLE BYPASS)  
ARKANSAS STATE HIGHWAY COMMISSION  
RIGHT OF WAY MAP

JOB 080236 POPE COUNTY



5	7/18/18	Released Tract 102XR by M.O.#	DJH	DJH	
4	5/14/09	Rev.TP.Area to Acq.& Res.Tr 101	AJR	DJH	
3	5/1/09	Rev.TP.Area to Acq.& Res.Tr's 96, 97 & 98	AJR	DJH	
2	3/19/09	Added Tr 102XR	AJR	DJH	
1	5/22/07	REV.RES.TR 105	AJ	JHK	
NO.	DATE	DESCRIPTION	BY	CK'D	
DATE: 3/2006		REVISIONS			MICROFILM REVISIONS
DESIGNED: Ashley Reeder		REVIEWED: JHK			

