

Line Table

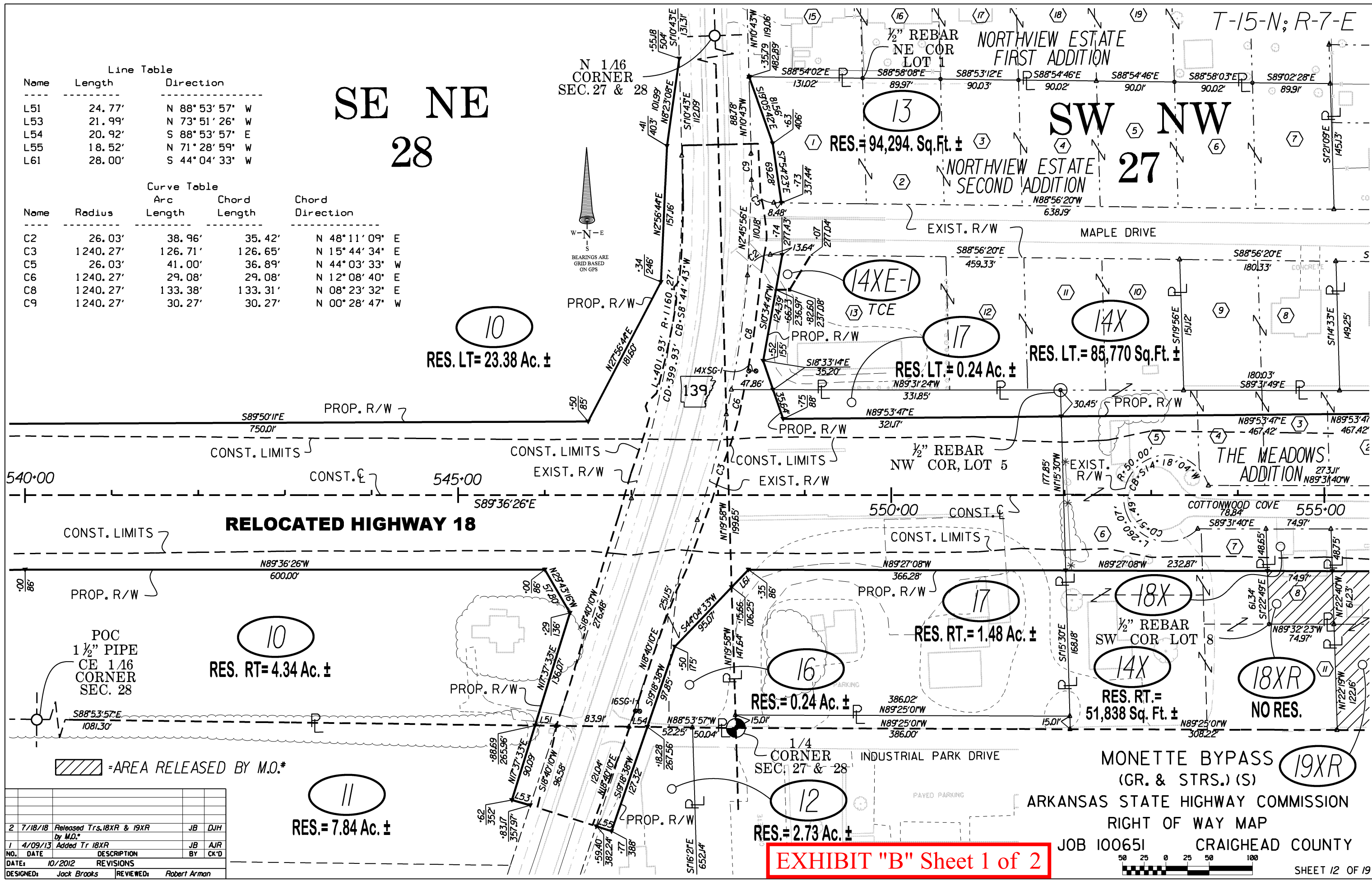
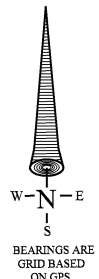
Name	Length	Direction
L51	24.77'	N 88° 53' 57" W
L53	21.99'	N 73° 51' 26" W
L54	20.92'	S 88° 53' 57" E
L55	18.52'	N 71° 28' 59" W
L61	28.00'	S 44° 04' 33" W

Curve Table

Name	Radius	Arc Length	Chord Length	Chord Direction
C2	26.03'	38.96'	35.42'	N 48° 11' 09" E
C3	1240.27'	126.71'	126.65'	N 15° 44' 34" E
C5	26.03'	41.00'	36.89'	N 44° 03' 33" W
C6	1240.27'	29.08'	29.08'	N 12° 08' 40" E
C8	1240.27'	133.38'	133.31'	N 08° 23' 32" E
C9	1240.27'	30.27'	30.27'	N 00° 28' 47" W

SE NE 28

N 1/4
CORNER
SEC. 27 & 28



10
RES. LT= 23.38 Ac. ±

10
RES. RT= 4.34 Ac. ±

11
RES= 7.84 Ac. ±

16
RES= 0.24 Ac. ±

12
RES= 2.73 Ac. ±

17
RES. LT= 0.24 Ac. ±

17
RES. RT= 1.48 Ac. ±

14X
RES. LT= 85,770 Sq. Ft. ±

14X
RES. RT= 51,838 Sq. Ft. ±

18XR
NO RES.

19XR

EXHIBIT "B" Sheet 1 of 2

NO.	DATE	DESCRIPTION	BY	CK'D
2	7/18/18	Released Trs. 18XR & 19XR by M.O.*	JB	DJH
1	4/09/13	Added Tr 18XR	JB	AJR

DESIGNED: Jack Brooks REVIEWED: Robert Arman

JOB 100651 CRAIGHEAD COUNTY



