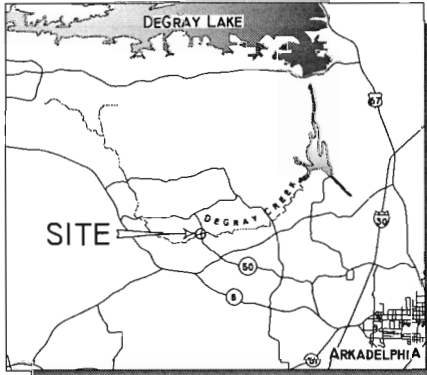
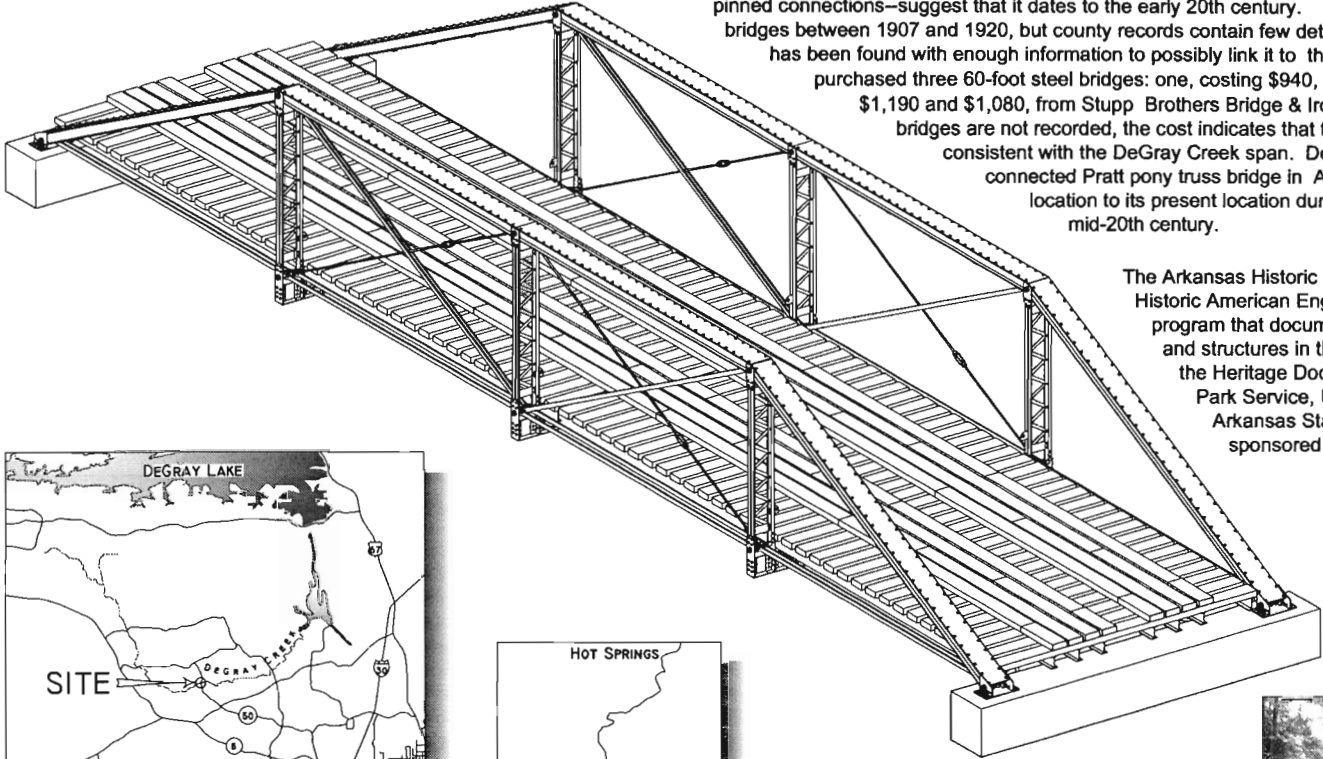


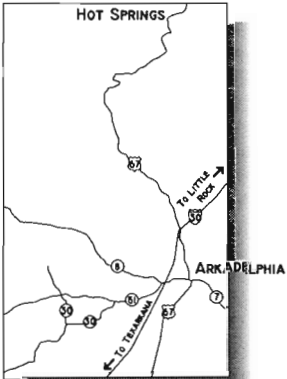
DEGRAY CREEK BRIDGE, ≈1915

The original date of construction for DeGray Creek Bridge remains unknown, but physical attributes—in particular, the pinned connections—suggest that it dates to the early 20th century. Clark County erected numerous steel truss bridges between 1907 and 1920, but county records contain few details regarding their locations. Only one entry has been found with enough information to possibly link it to this bridge. In November 1915, Clark County purchased three 60-foot steel bridges: one, costing \$940, from Hope Bridge Company and two, costing \$1,190 and \$1,080, from Stupp Brothers Bridge & Iron Works. Although the locations of those bridges are not recorded, the cost indicates that they were pony trusses and the length is consistent with the DeGray Creek span. DeGray Creek Bridge is the only known surviving connected Pratt pony truss bridge in Arkansas. It was moved from its original location to its present location during construction of the DeGray Dam in the mid-20th century.

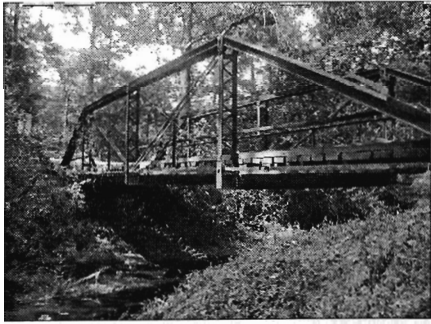
The Arkansas Historic Bridges Recording Project is part of the Historic American Engineering Record (HAER), a long-range program that documents historically significant engineering sites and structures in the United States. HAER is administered by the Heritage Documentation Programs Division of the National Park Service, United States Department of the Interior. The Arkansas State Highway and Transportation Department sponsored this project.



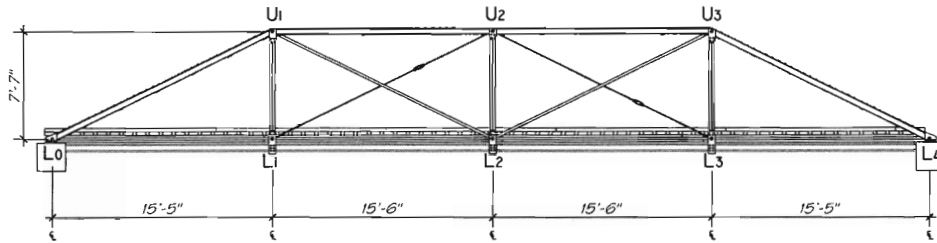
LOCATION MAP
NOT TO SCALE
UTM: 15.485203.3779254



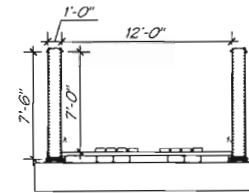
VICINITY MAP
NOT TO SCALE



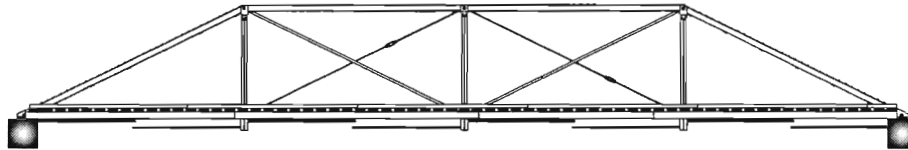
PHOTOGRAPHER: LOLA BONNETT, 2007



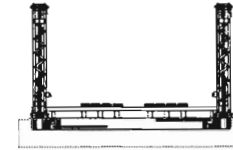
LONGITUDINAL ELEVATION



TRANSVERSE ELEVATION

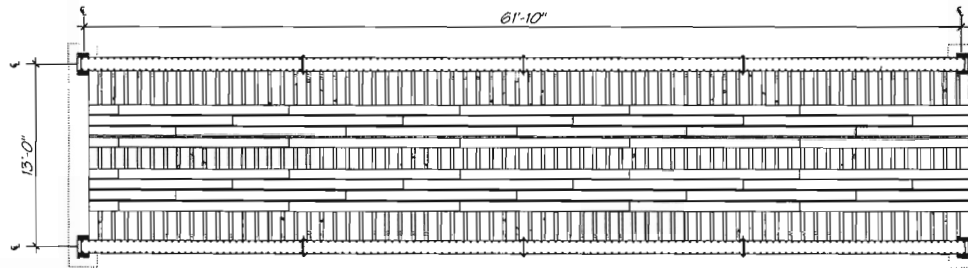


ABUTMENTS WERE
INACCESSIBLE. A GENERIC
FORM IS USED FOR
ILLUSTRATIVE PURPOSES

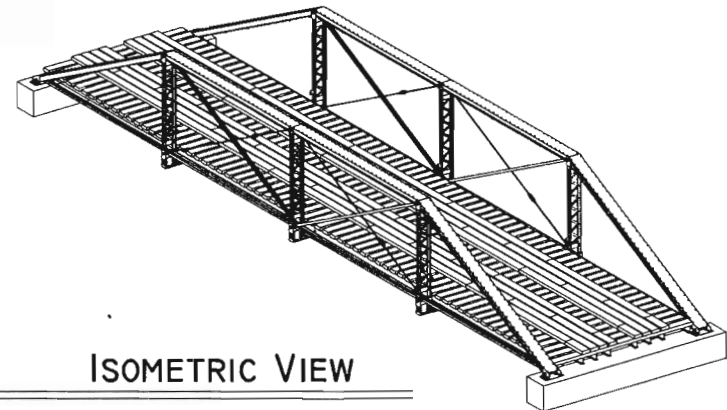


TRANSVERSE SECTION

LONGITUDINAL SECTION



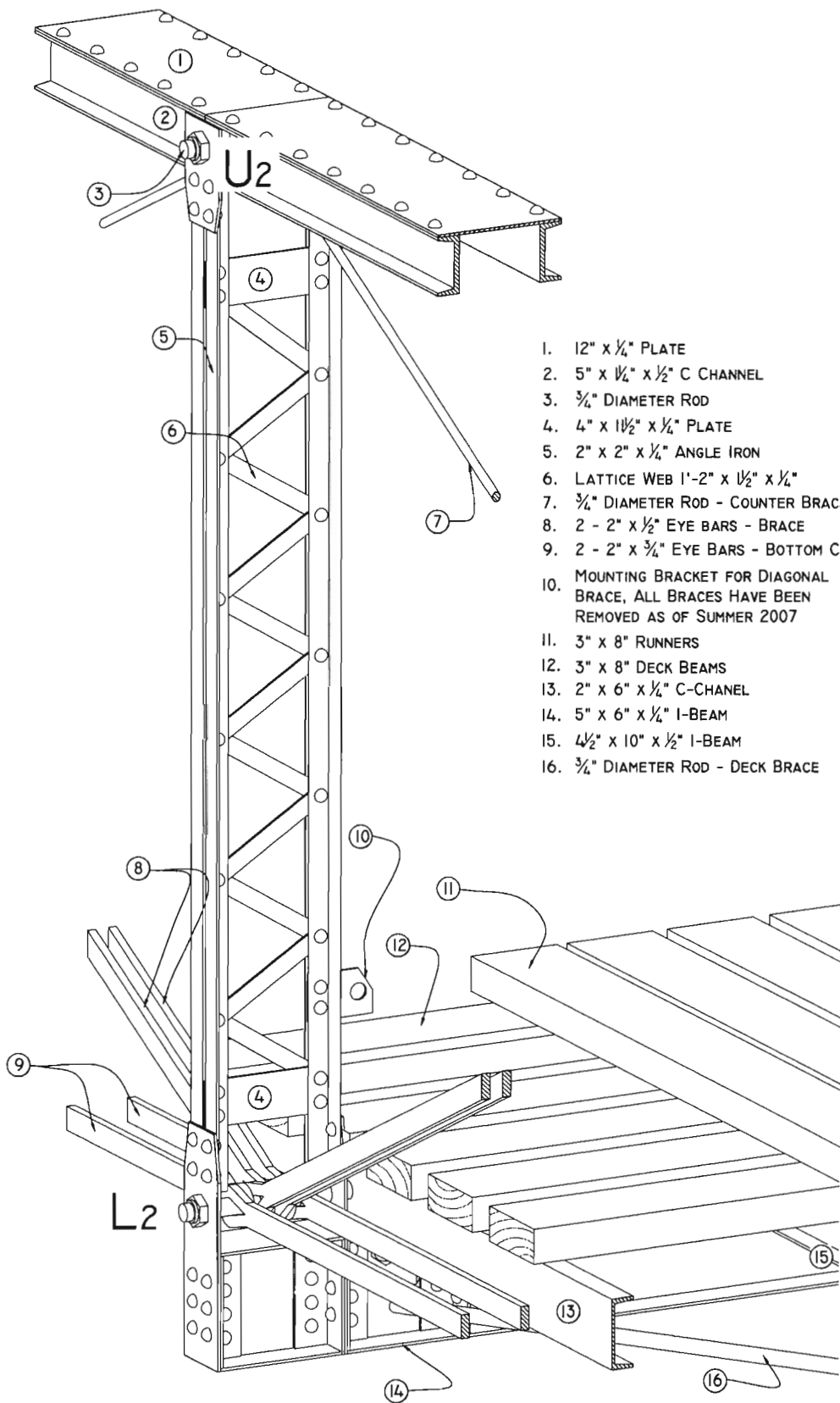
DECK PLAN



ISOMETRIC VIEW



CUT-AWAY DETAIL AT PANEL POINTS L2 AND U2



1. 12" x ¼" PLATE
2. 5" x ¼" x ½" C CHANNEL
3. ¾" DIAMETER ROD
4. 4" x 1½" x ¼" PLATE
5. 2" x 2" x ¼" ANGLE IRON
6. LATTICE WEB 1'-2" x 1½" x ¼"
7. ¾" DIAMETER ROD - COUNTER BRACE
8. 2 - 2" x ½" EYE BARS - BRACE
9. 2 - 2" x ¾" EYE BARS - BOTTOM CHORD
10. MOUNTING BRACKET FOR DIAGONAL BRACE, ALL BRACES HAVE BEEN REMOVED AS OF SUMMER 2007
11. 3" x 8" RUNNERS
12. 3" x 8" DECK BEAMS
13. 2" x 6" x ¼" C-CHANNEL
14. 5" x 6" x ¼" I-BEAM
15. 4½" x 10" x ½" I-BEAM
16. ¾" DIAMETER ROD - DECK BRACE

DELINEATED BY: THOMAS H. BEYER

ARKANSAS BRIDGES 2007
RECORDING PROJECT
NATIONAL PARK SERVICE
UNITED STATES DEPARTMENT OF THE INTERIOR

ARKADELPHIA VICINITY

DEGRAY CREEK BRIDGE
SPANNING DEGRAY CREEK AT BUSH ROAD (COUNTY ROUTE 50)
CLARK COUNTY

ARKANSAS

SHEET
3 OF 3

HISTORIC AMERICAN
ENGINEERING RECORD
AR-81