

FED. ROAD DIST. NO.	STATE	FED. AID PROJ. NO.	FISCAL YEAR	SHEET NO.	TOTAL SHEETS
6	ARK.	198-B	1926	1	15

Mill Creek & Slough, S. & Co. Dr. # 201

STATE OF ARKANSAS  
STATE HIGHWAY DEPARTMENT

**PLAN OF PROPOSED BRIDGES**  
**OVER**  
**MILL CREEK & SLOUGH**  
**SCOTT COUNTY**

16 MILES SOUTH OF WALDRON, STATE HIGHWAY No. 71

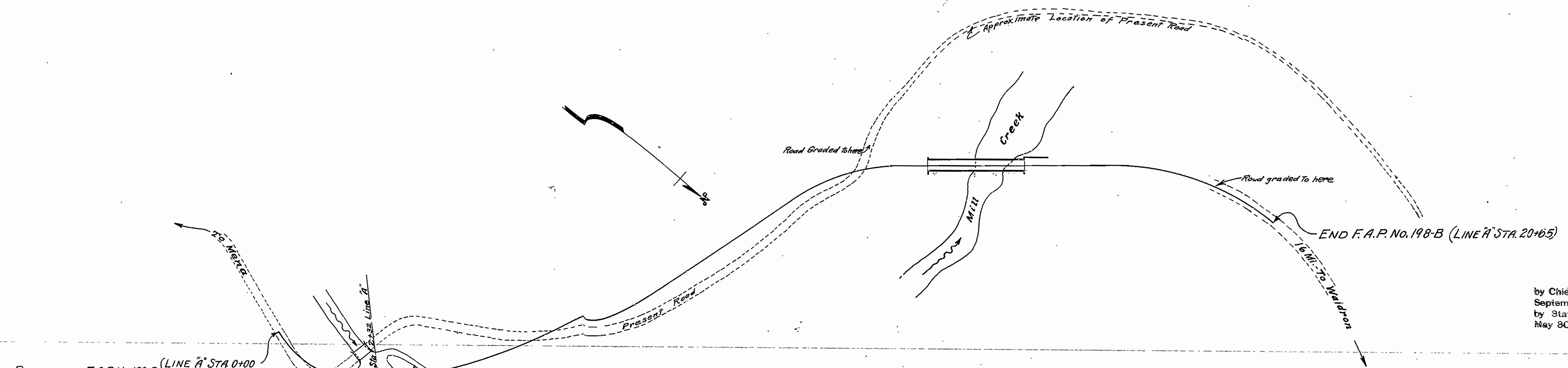
FEDERAL AID PROJECT No. 198-B  
**JOB NO.-403**

**INDEX OF SHEETS**

Sheet No. 1	Title Sheet and Summary of Quantities.
" " 2	Plan and Profile of Mill Creek and Slough Bridges.
" " 3	Layout, Bridge over Slough.
" " 4	Floor Slab and Pier Details for Slough Bridge.
" " 5	Details, East Abutment for Slough Bridge.
" " 6	" West " " " "
" " 7	Layout, Bridge over Mill Creek.
" " 8	Details, North Half of Left Arch Ring, Mill Creek Bridge.
" " 9	" South " " " " " "
" " 10	" Approach Spans to Arch Spans " " " "
" " 11	" 26 Ft. Girder Spans, " " " "
" " 12	" Retaining Wall, Mill Creek Bridge.
" " 13	Cross Sections, Roadway Embankment.
" " 14	" " " " " and Typical Sections.
" " 15	" " " " " and Typical Sections.

**QUANTITIES**

Item No. 11	Clearing.	2.51 Acres
" " 11	Grubbing.	199 "
" " 12	Solid Rock Excavation.	1512.4 Cu.Yds.
" " 12	Loose " " "	1046.8 " "
" " 12	Earth Excavation.	4335.5 " "
" " 13	Dry Excavation for Structures.	6638 " "
" " 13	Wet " " "	734 " "
" " 13-X	Solid Rock " " "	221. " "
" " 54	Class "A" Concrete.	43454 " "
" " 54	" "S" " " "	3604 " "
" " 55	Reinforcing Steel.	75862 Lb's.
" " 69	Rip Rap (1 Ft. Thick)	180 Sq.Yds.
" " 74	Concrete Railing for Structures	603.7 Lin. Ft.



Specifications approved by Chief, Bureau of Public Roads September 28, 1925, and adopted by State Highway Commission May 30, 1926.

**LAYOUT**

Scale: 1 Inch = 10 Feet

GROSS LENGTH OF PROJECT = 2317.5 FT. = .438 MI.  
NET LENGTH OF PROJECT = 2317.5 FT. = .438 MI.

APPROVED	[Signature]
COMMISSIONER - STATE LANDS, HIGHWAYS AND IMPROVEMENTS	
APPROVED	[Signature]
STATE HIGHWAY ENGINEER	
RECOMMENDED FOR APPROVAL	[Signature]
DISTRICT ENGINEER - U. S. BUREAU OF PUBLIC ROADS	
RECOMMENDED FOR APPROVAL	[Signature]
CHIEF ENGINEER - U. S. BUREAU OF PUBLIC ROADS	
RECOMMENDED FOR APPROVAL	[Signature]
STATE HIGHWAY BRIDGE ENGINEER	
APPROVED	[Signature]
DIRECTOR - U. S. BUREAU OF PUBLIC ROADS	







FED. ROAD DIST. NO.	STATE	FED. AID PROJ. NO.	FISCAL YEAR	SHEET NO.	TOTAL SHEETS
6	ARK.	198B	1926	8	15

### SPECIAL NOTES

SPECIFICATIONS: Arkansas Standard Specifications of May 30, 1925.

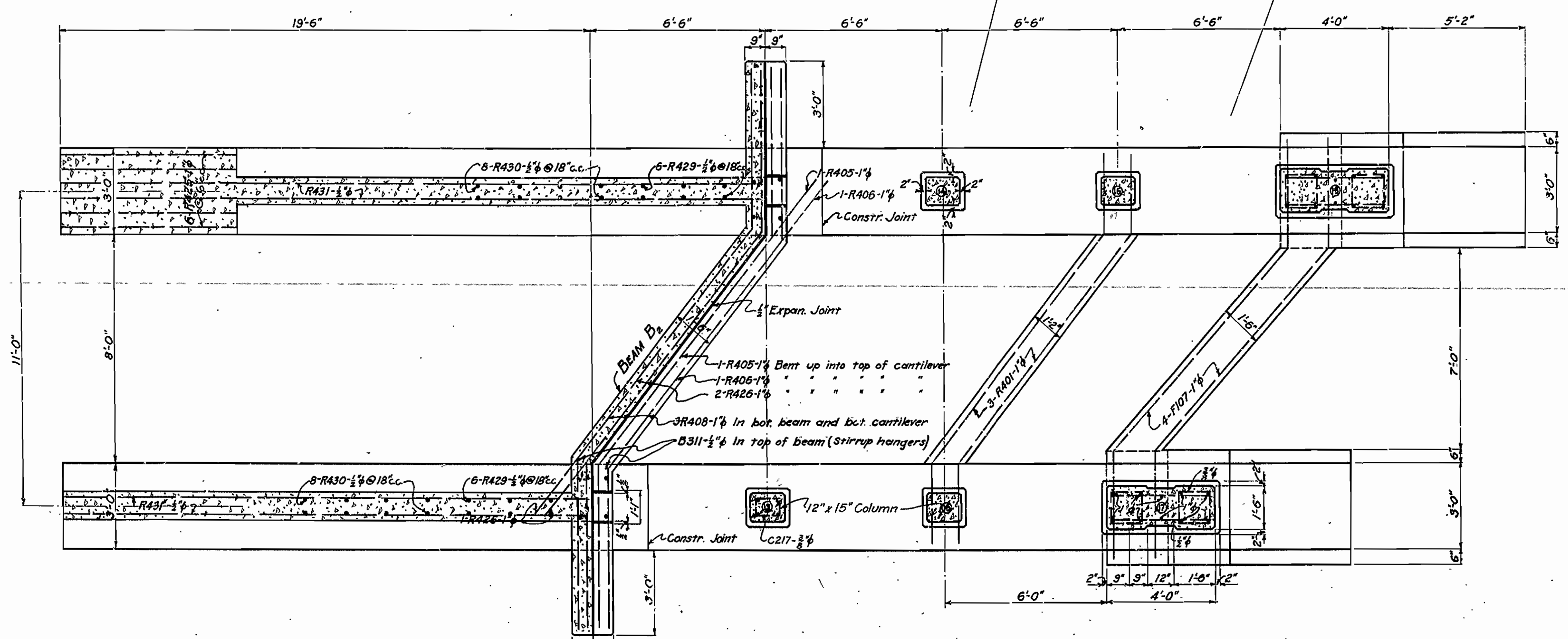
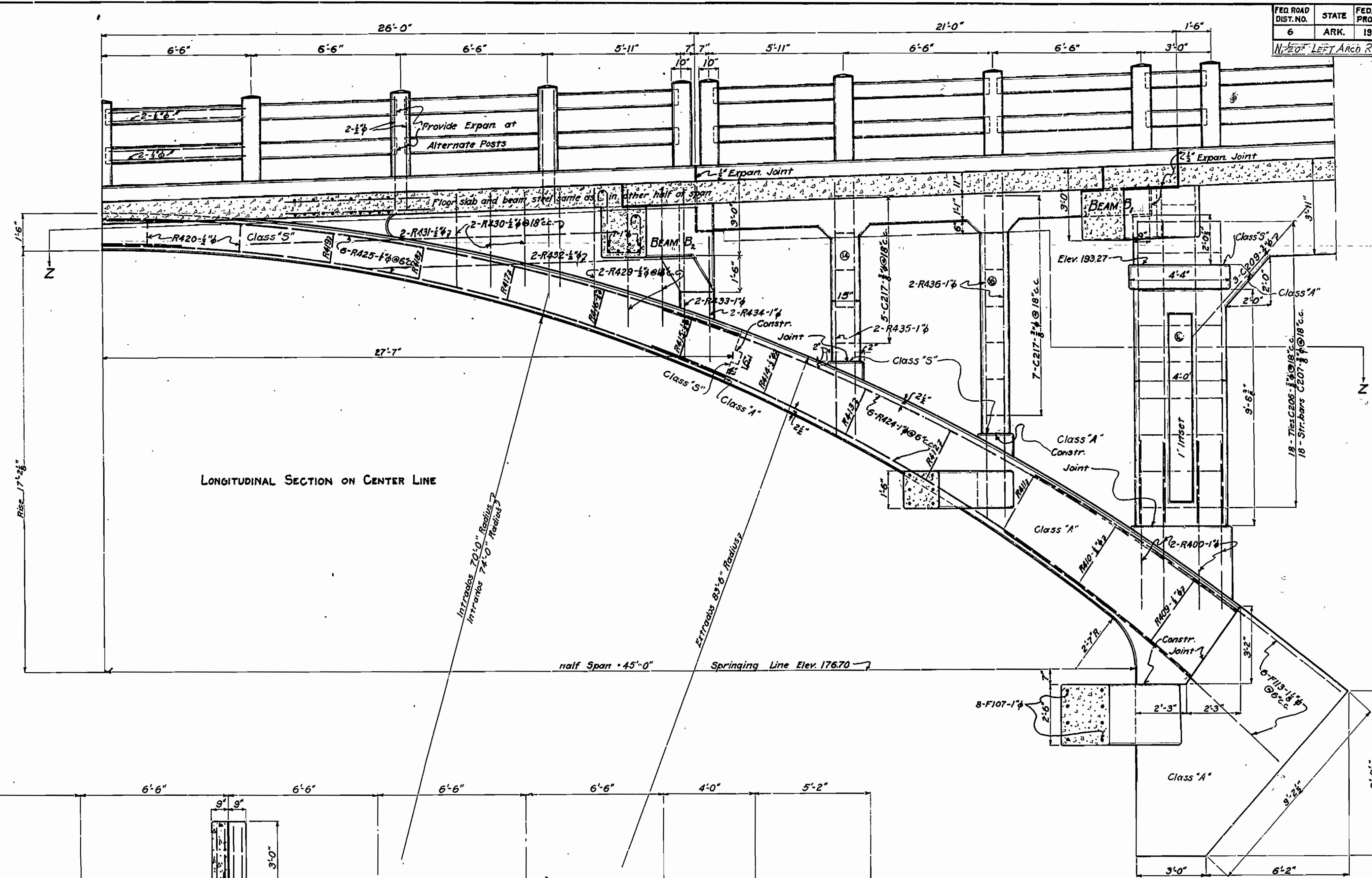
DESIGN DATA:  
 Concentrated Load: 2-15 TON TRUCKS  
 Impact Allowance: 25% OF LIVE LOAD  
 Steel in Tension: 16,000 lbs. per sq. in.  
 Concrete in Compression: 650 lbs. per sq. in.

CONCRETE: Chamfer all exposed edges  $\frac{3}{4}$ " unless shown otherwise. All concrete is to be poured in the dry.  
 Precast Hand Rails - 1-3 Mix, Max. Agg.  $\frac{1}{4}$  in.  
 Caps, Columns, part of Arch Rings below center construction joint, and Footings - Class "A".  
 Center portion of Arch Rings, slab, curb, beams, and Small Spandrel Columns, handrail posts - Class "S".

REINFORCING STEEL: All reinforcing steel to be deformed bars (square twisted bars not to be considered deformed). All bars are to be securely wired in place before concrete is poured. Reinforcing steel in handrailing is not to be included in pay Item No. 55 but is to be covered in unit price bid of Item No. 74. All reinforcing steel, unless shown otherwise, is  $2\frac{1}{2}$  in. from center of steel to outside of concrete.

DRAIN BOXES AND EXPANSION DEVICES: Roadway drain boxes and expansion devices to be included in Item No. 55 (REINFORCING STEEL).

SHOP list and bending diagrams of reinforcing steel must be submitted by Contractor for approval before fabrication is begun.



### QUANTITIES FOR ARCH AND APPROACH SPANS

CLASS "A" CONCRETE	179.9 cu. yds.
"S"	225.4 "
HAND RAILING	396.4 linear ft.
REINFORCING STEEL	54,957 lbs.

NORTH HALF OF LEFT ARCH RING  
 MILL CREEK BRIDGE  
 16 MILES SOUTH OF WALDRON, SCOTT COUNTY.  
 STATE HIGHWAY No. 71 - FED. AID PROJ. No. 198B.  
 ARKANSAS STATE HIGHWAY DEPARTMENT.  
 LITTLE ROCK, ARK. MAY, 1927.

DRAWN BY: R.E.H.  
 TRACED BY: R.E.H.  
 CHECKED BY:  
 DATE: APRIL 26, 1927.









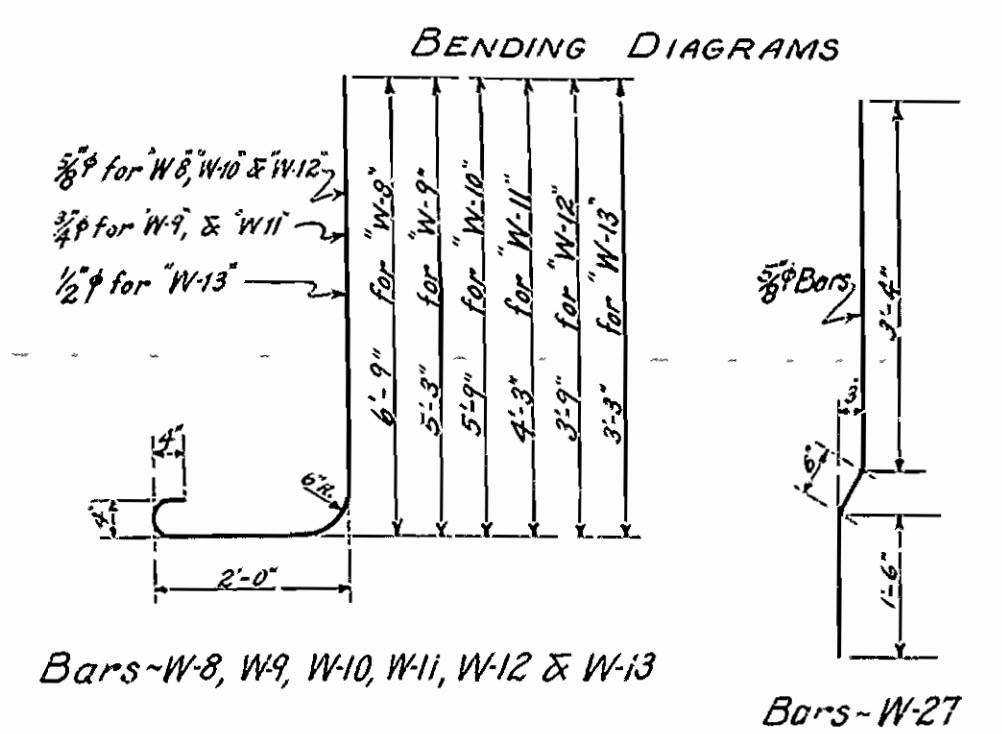
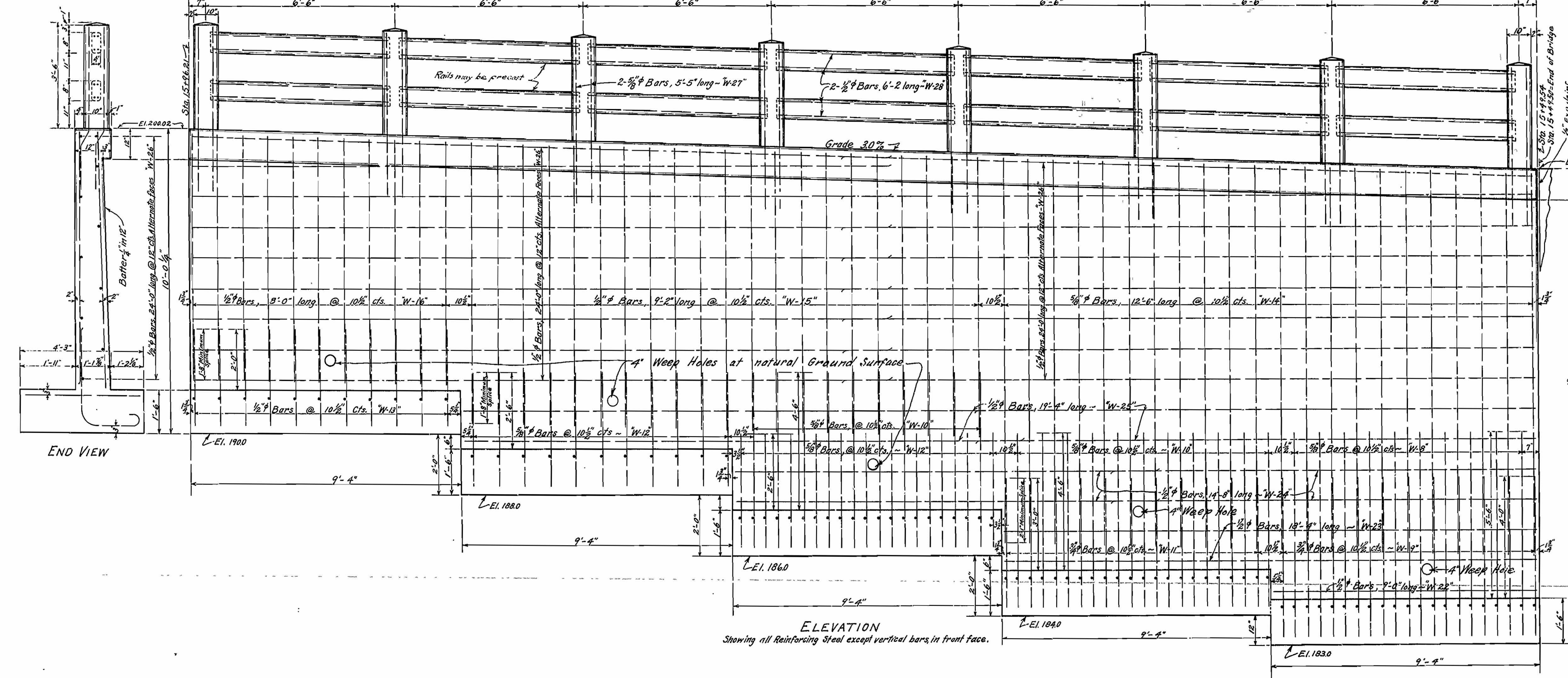
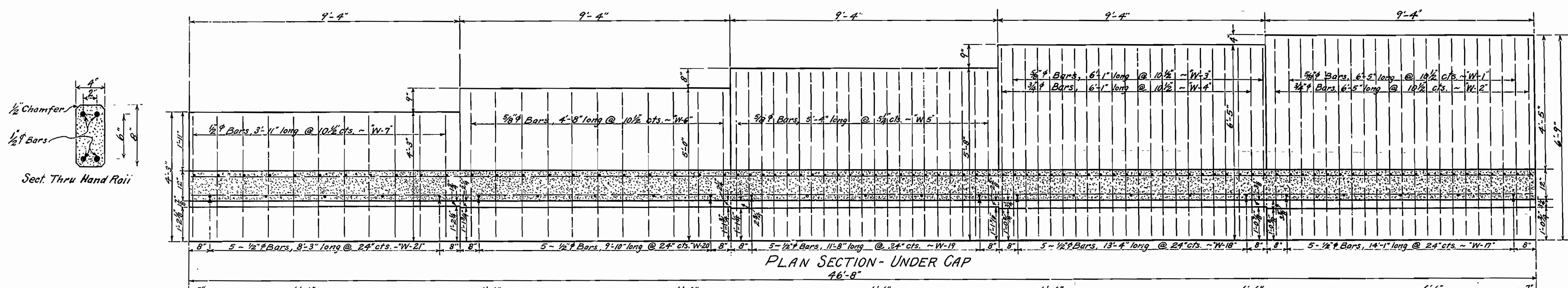






FED. ROAD DIST. No.	STATE	FED. AID PROJ. No.	FISCAL YEAR	SHEET No.	TOTAL SHEETS
6	ARK.	198-B	1926	12	15

RETAINING WALL BRIDGE OVER MILL CREEK, STATE HIGHWAY No. 71, DRAWING No. 212



LIST OF REINFORCING STEEL

Mark	Quantity	Size	Length	Weight	Location
W-1	10	3/8"	6'-5"		Footings
W-2	11	3/8"	6'-5"		"
W-3	11	3/8"	6'-1"		"
W-4	11	3/8"	6'-1"		"
W-5	21	3/8"	5'-4"		"
W-6	11	3/8"	4'-8"		"
W-7	11	3/8"	3'-0"		"
W-8	10	3/8"	9'-7"		Footings and Wall
W-9	11	3/8"	8'-1"		"
W-10	21	3/8"	8'-7"		"
W-11	11	3/8"	7'-1"		"
W-12	22	3/8"	6'-7"		"
W-13	11	3/8"	6'-1"		"
W-14	22	3/8"	12'-6"		Vertical Bars Front Face of Wall
W-15	21	3/8"	9'-2"		"
W-16	11	3/8"	8'-0"		"
W-17	5	3/8"	14'-1"		Rear
W-18	5	3/8"	13'-4"		"
W-19	5	3/8"	11'-8"		"
W-20	5	3/8"	9'-10"		"
W-21	5	3/8"	8'-3"		"
W-22	1	3/8"	9'-0"		Horizontal Bars in Wall
W-23	2	3/8"	18'-4"		"
W-24	4	3/8"	14'-8"		"
W-25	4	3/8"	19'-4"		"
W-26	17	3/8"	24'-0"		"
W-27	32	3/8"	5'-4"		Hand Rail Posts
W-28	56	3/8"	6'-2"		Hand Railing

TABULATION OF QUANTITIES

Concrete Class "A"	37.15 Cu. Yds.
Reinforcing Steel	2335 Lbs.
Hand Railing	46.3 Lin. Ft.

NOTE: - All concrete in footing, Wall and Cap to be Class "A"; in hand rail 1:3 Mix. See Sheet No. 8 for special notes.

RETAINING WALL DETAILS  
 BRIDGE OVER MILL CREEK  
 16 MILES SOUTH OF WALDRON, SCOTT COUNTY.  
 STATE HIGHWAY No. 71 ~ FED. AID PROJ. No. 198-B.  
 ARKANSAS STATE HIGHWAY DEPARTMENT.  
 LITTLE ROCK, ARK. MARCH 1927.