

FED. ROAD DIST. No.	STATE	FED. AID PROJ. No.	FISCAL YEAR	SHEET No.	TOTAL SHEETS
6	ARK.		1927	1	4

B.R. OVER CYPRESS CREEK, RT. 9 SEC. 8, T. 21 N.

STATE OF ARKANSAS  
STATE HIGHWAY DEPARTMENT

PLAN OF PROPOSED BRIDGE  
OVER  
CYPRESS CREEK

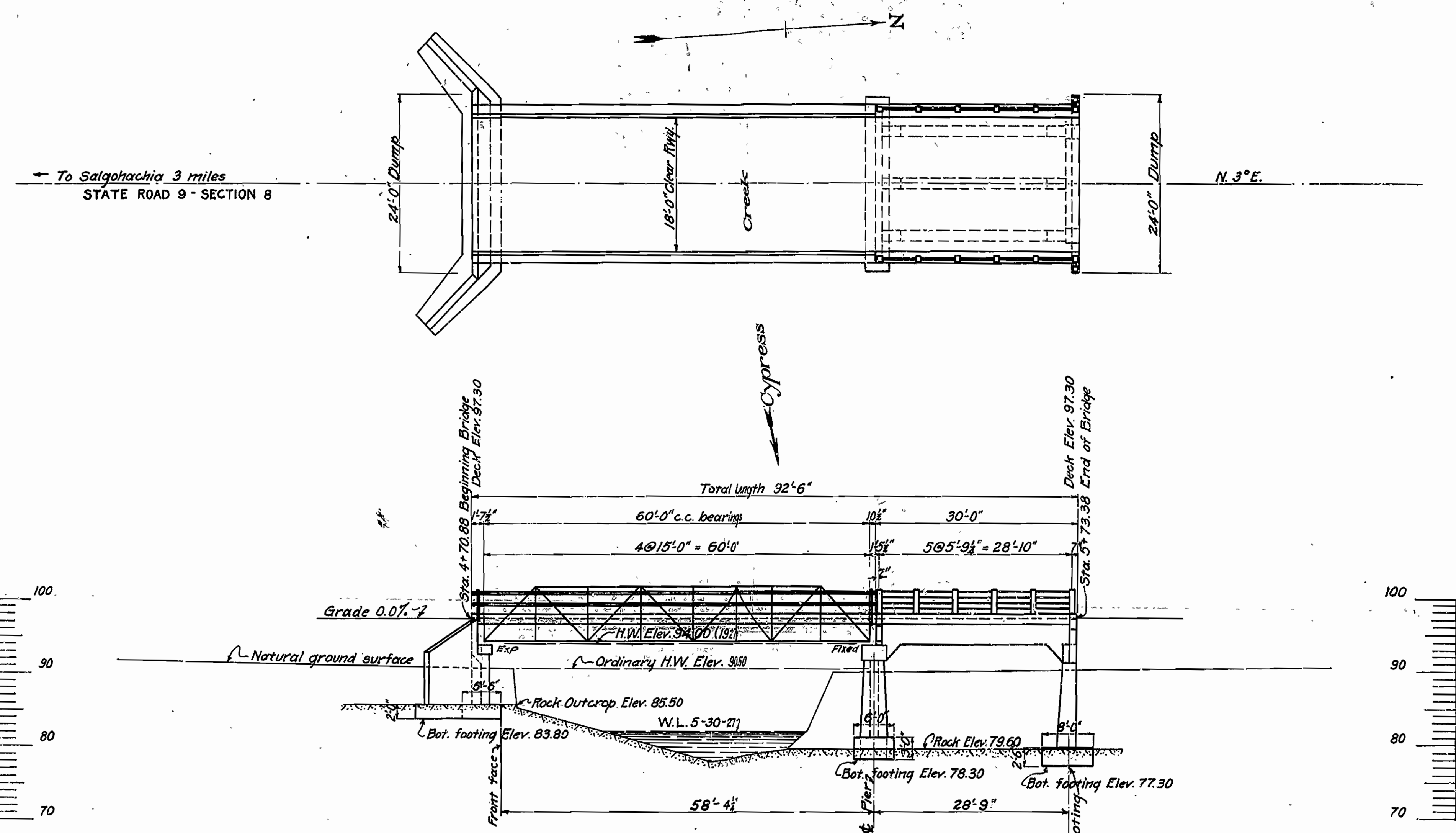
ROUTE 9 - SECTION 8  
JOB No 802

INDEX OF SHEETS

SHEET		Drawing No.
1	TITLE, PLAN AND PROFILE	285
2	DETAILS OF 30'-0" CONCRETE APPROACH SPAN	286
3	STANDARD 60'-0" TRUSS SPAN	52
4	DETAILS OF ABUTMENT	287

QUANTITIES

ITEM No.		TOTALS
13	Dry Excavation Structures	124.0 cu. yds.
13	Wet " " " "	109.1 " "
13x	Solid Rock " " " "	28.2 " "
54	Concrete Class "A" " " " "	92.9 cu. yds.
54	" " "S" " " " "	67.4 " "
55	Reinforcing Steel	20,695 lbs.
56	Structural Steel in 60' Truss	38,450 lbs.
74	Concrete Hand Railing	630 lin. ft.



PLAN AND PROFILE OF  
BRIDGE OVER CYPRESS CREEK  
3 MILES NO. OF SALGOHACHIA, CONWAY CO., STATE HIGHWAY NO. 9  
ARKANSAS STATE HIGHWAY DEPARTMENT  
LITTLE ROCK, ARK.  
Designed By: REH Date: 7/23/27 Scale: 1 inch = 10 feet  
Traced By: RCH Date: 7/28/27  
Checked By: Date:  
Bridge No. 327 Drawing No. 285

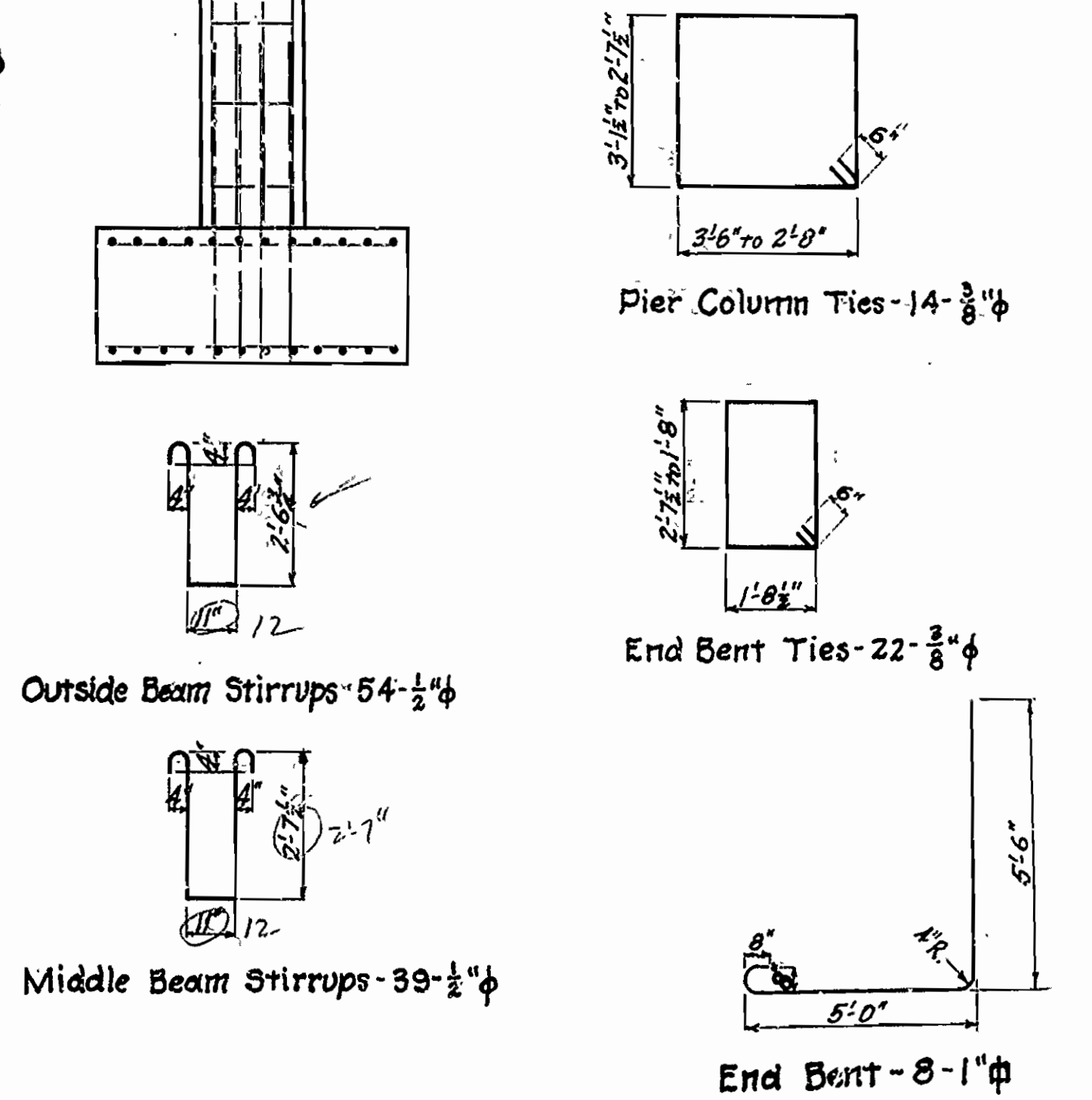
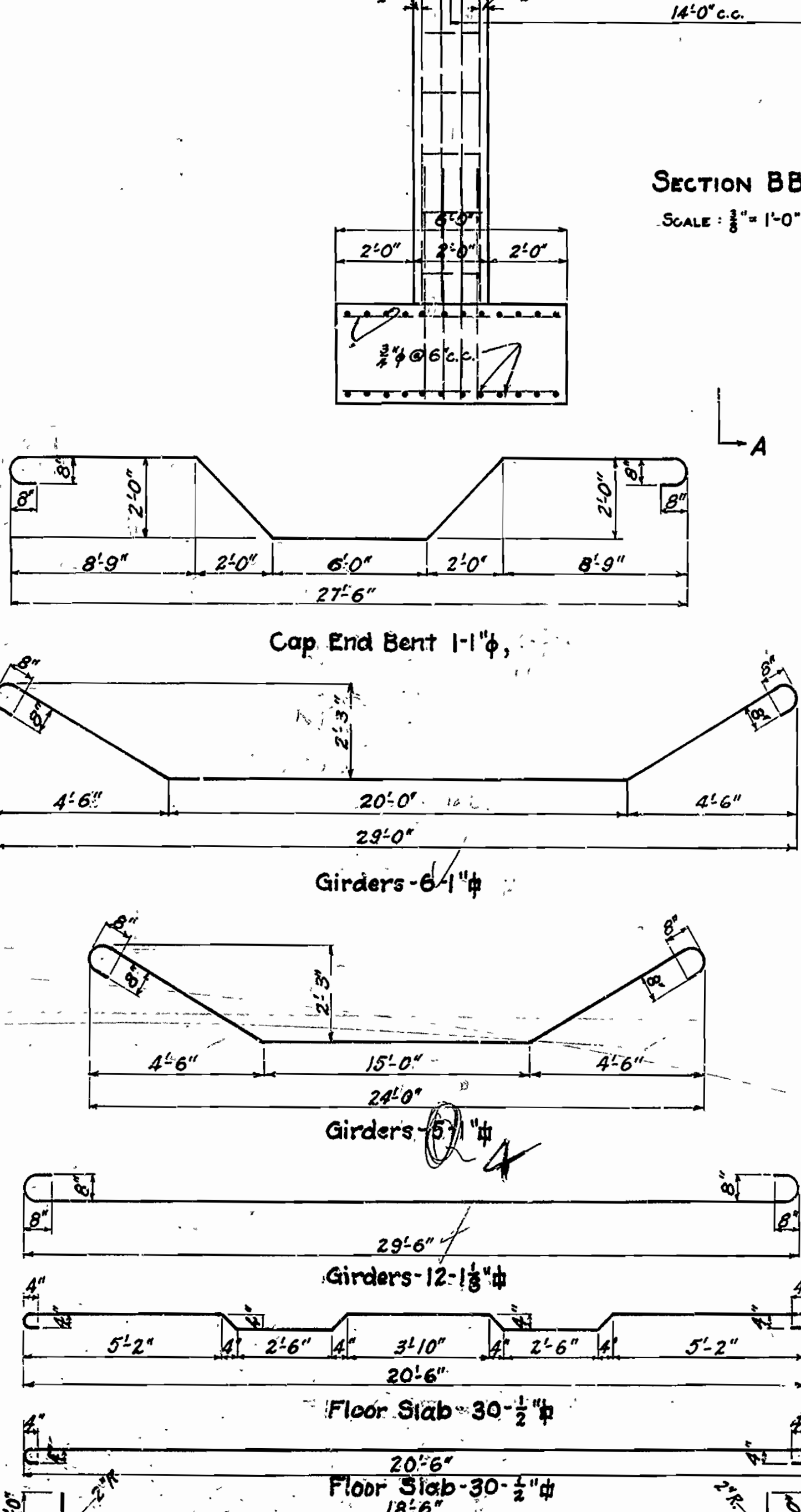
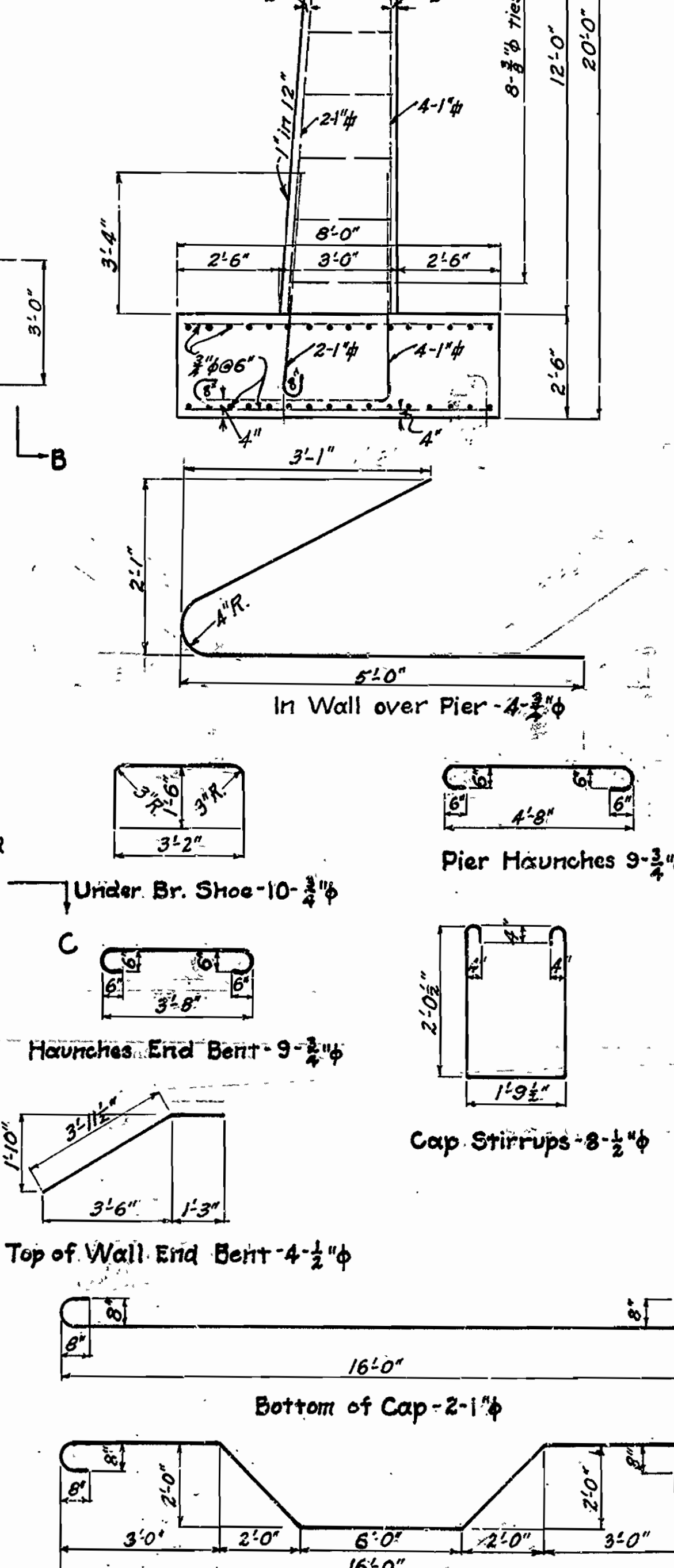
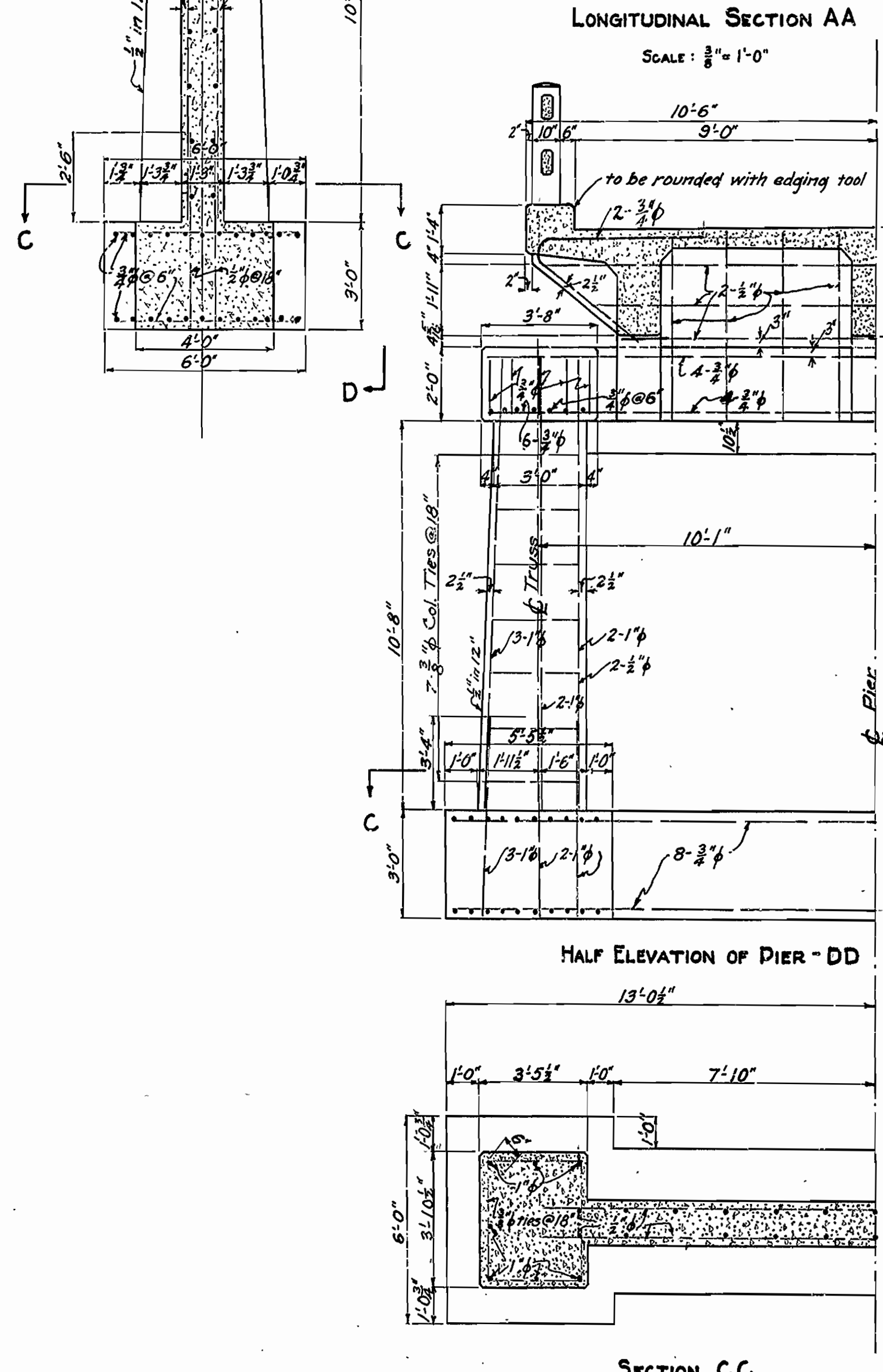
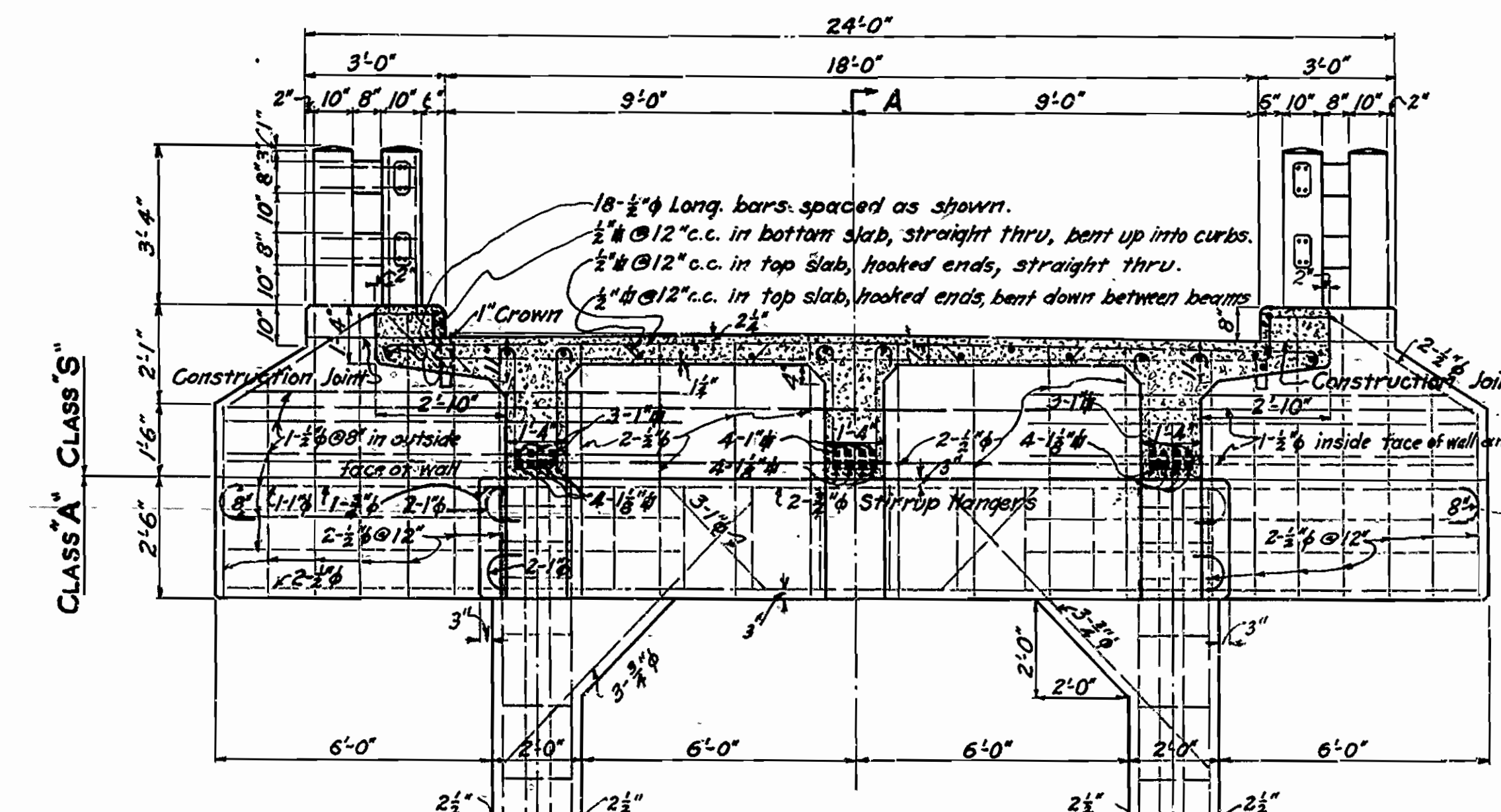
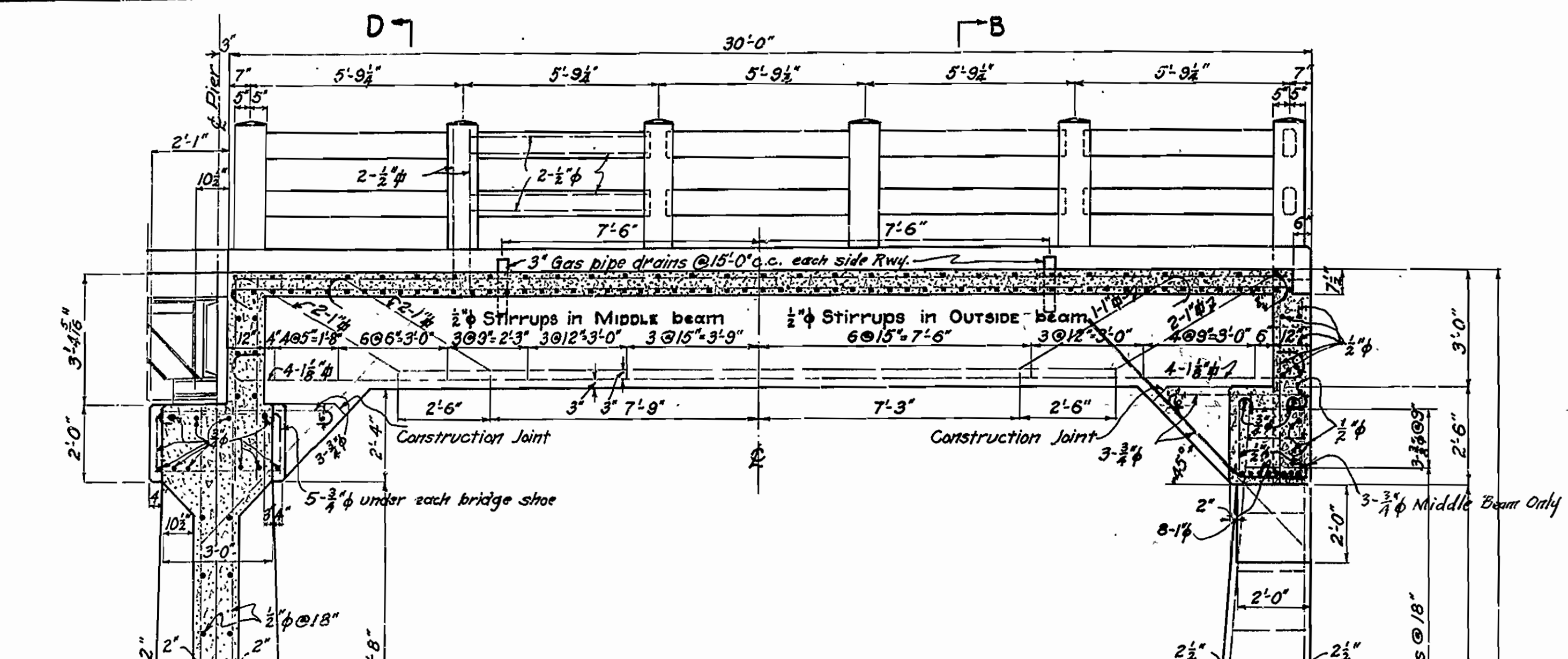
NOTE:  
See drawing no. 287 details of abutment  
See drawing no. 286 details of 30' ft. approach span.  
See drawing no. 52 details of 60 ft. truss span.

Revised 9/1/27 - R. H. (Quantity)  
1/14/27, R. E. E. (Spec. Quant.)

M. B. James  
BRIDGE ENGINEER

FED. ROAD DIST. NO.	STATE	FED. AID PROJ. NO.	FISCAL YEAR	SHEET NO.	TOTAL SHEETS
6	ARK.		1927	2	4

7th Col. Cr. 30' Conc. Gird. Sp. Dr. 286



Revised 9/11/27 R.S.H. Steel  
1/4/27 R.S.H. Steel

**DETAILS OF 30'-0" CONCRETE GIRDER SPAN BRIDGE OVER CYPRESS CREEK**  
3 MILES NO. OF SALGOHACHIA, CONWAY CO. STATE HIGHWAY NO. 9  
ARKANSAS STATE HIGHWAY DEPARTMENT  
LITTLE ROCK, ARK.

Designed By: R.E.H. Date: 7/21/27  
Traced By: R.E.H. Date: 7/29/27  
Checked By: Date: \_\_\_\_\_

Scale: 3/8" = 1' foot

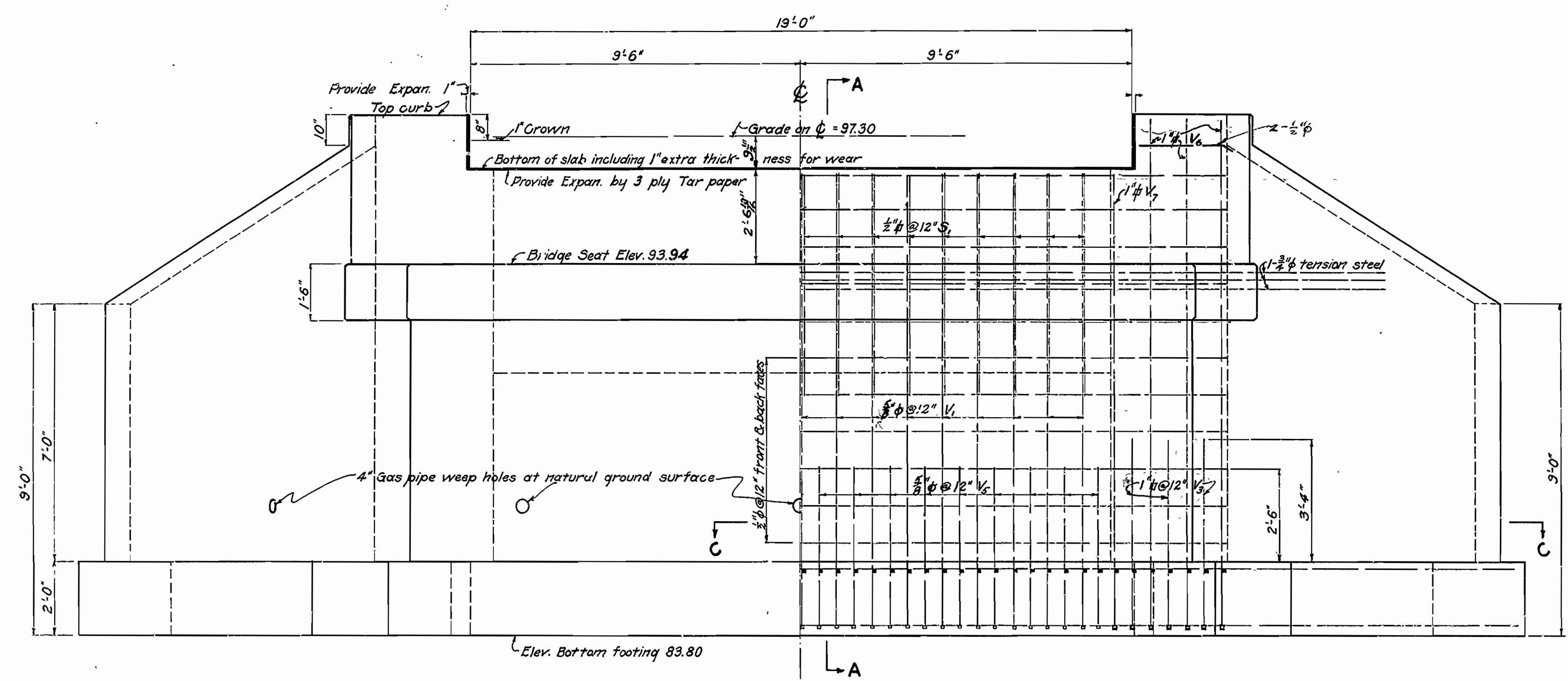
Bridge No. 327. Drawing No. 286

M.B. Bauer  
BRIDGE ENGINEER

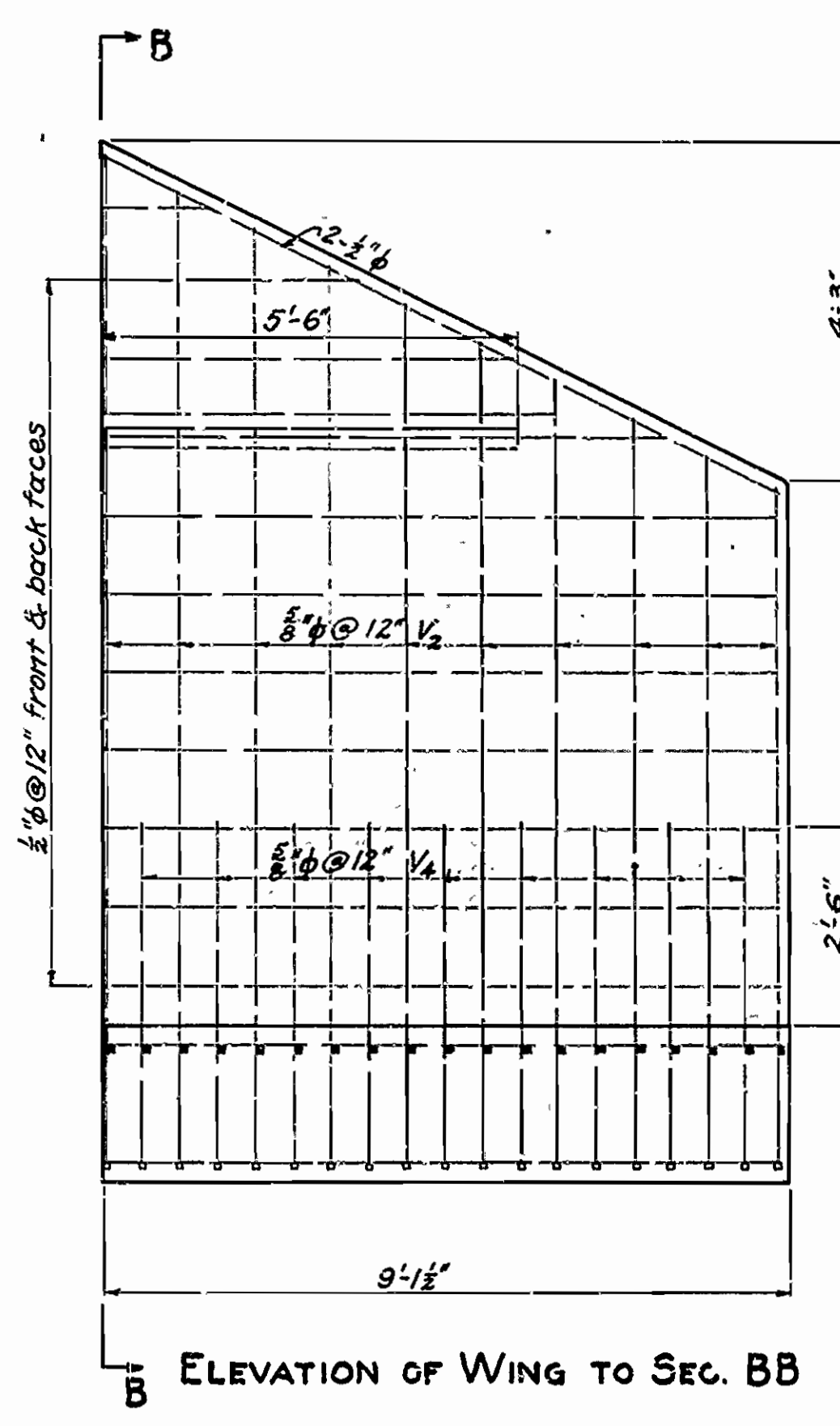


FED. ROAD DIST. NO.	STATE	FED. AID PROJ. NO.	F. SCAL. YEAR	SHEET NO.	TOTAL SHEETS
6	ARK.		1927	4	4

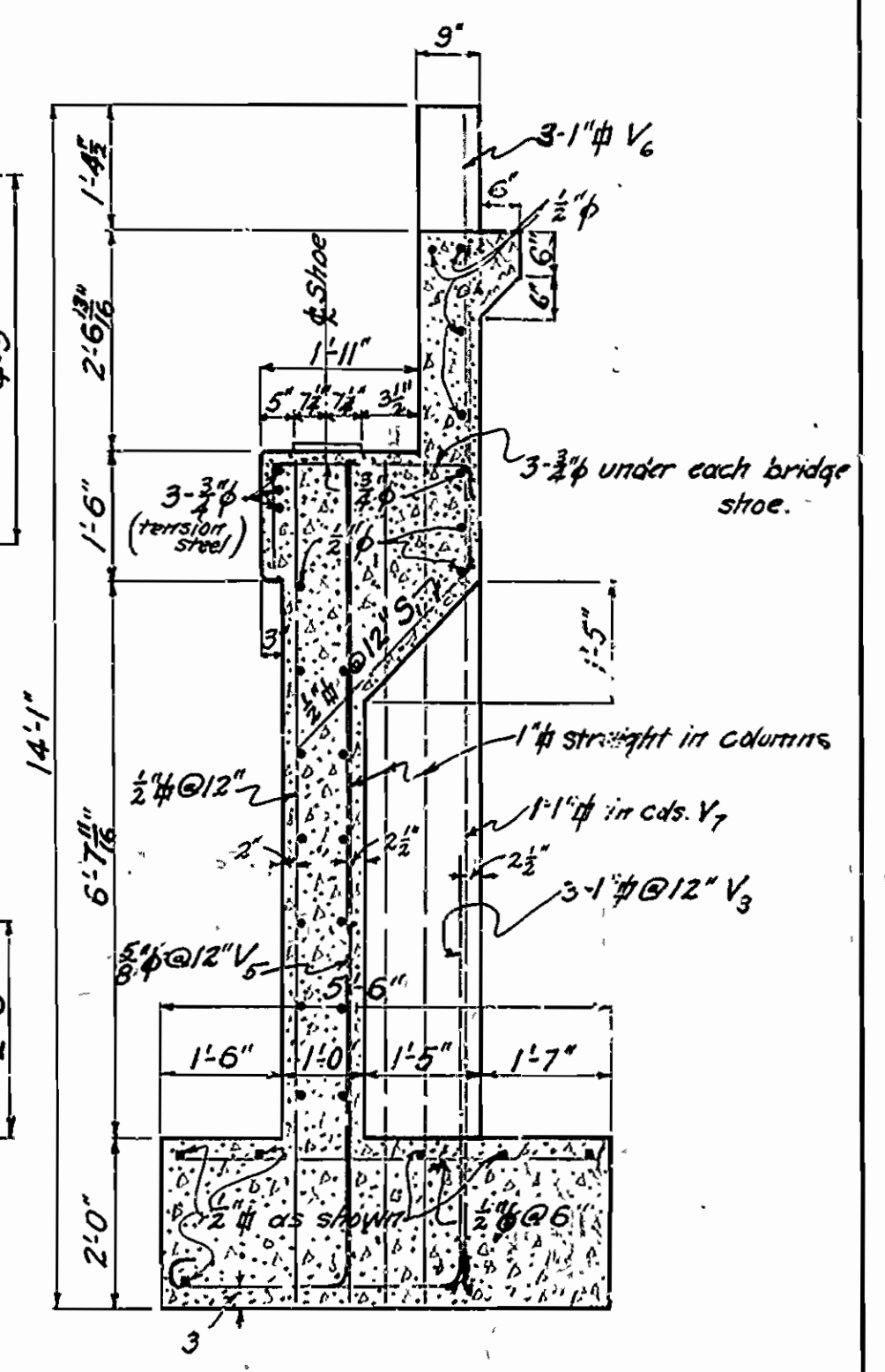
SOUTH ABUT. BR. OVER CYPRESS CREEK - D.R. 7/27



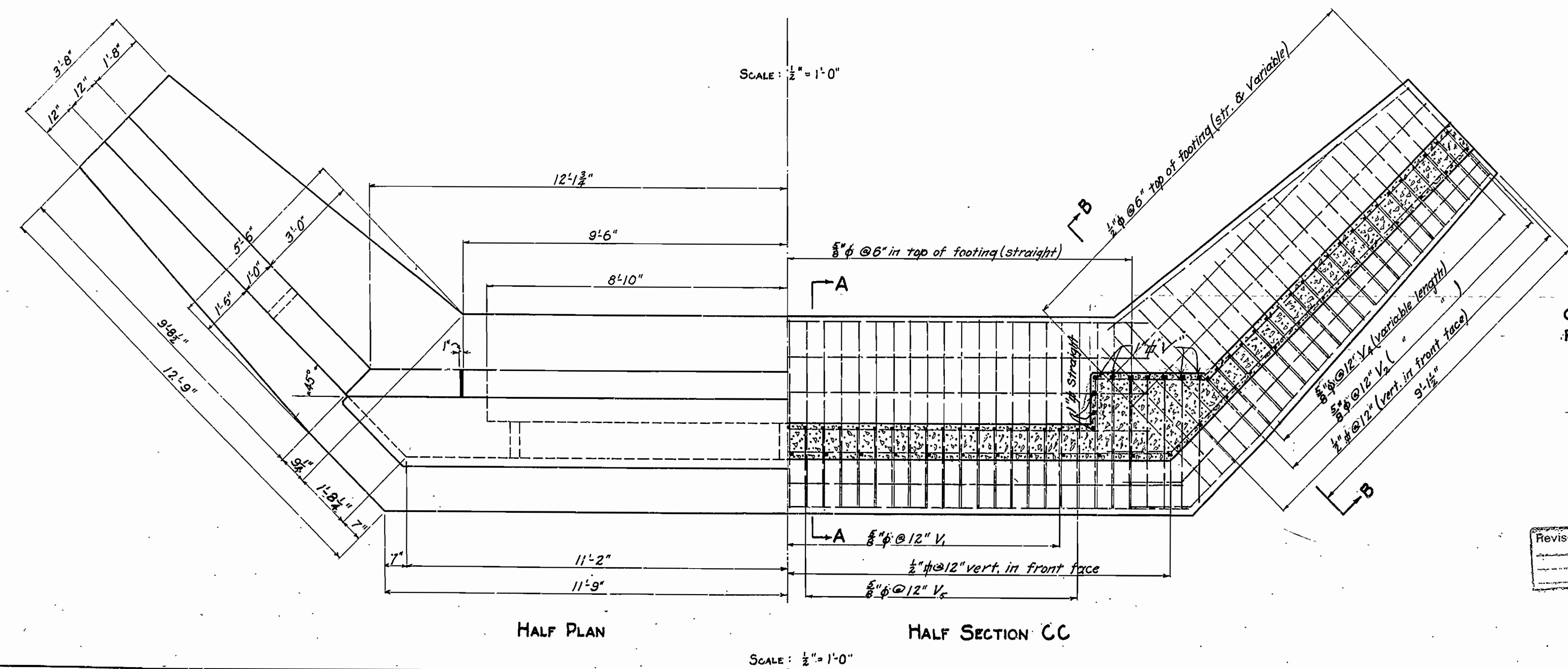
**ABUTMENT ELEVATION**  
(Showing reinforcing in middle wall and column)



**ELEVATION OF WING TO SEC. BB**

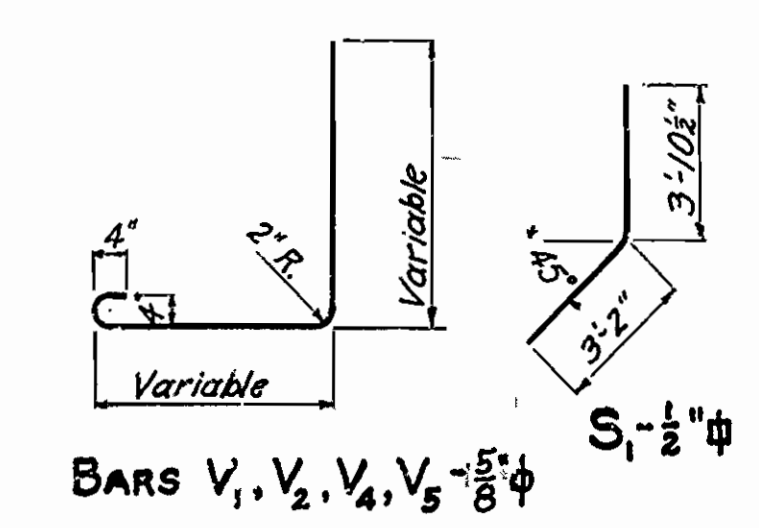


**SECTION AA**  
(showing reinforcing in columns)



**HALF PLAN**

**HALF SECTION CC**



BARS V<sub>1</sub>, V<sub>2</sub>, V<sub>4</sub>, V<sub>5</sub> - 5/8" #  
S - 1/2" #

BARS V<sub>3</sub>, V<sub>6</sub>, V<sub>7</sub> - 1" #

**QUANTITIES**

CONCRETE CLASS "A" 31.4 cu. yds.  
REINFORCING STEEL 3,146 lbs.

Revised 9/1/27 - R. H. R. Steel

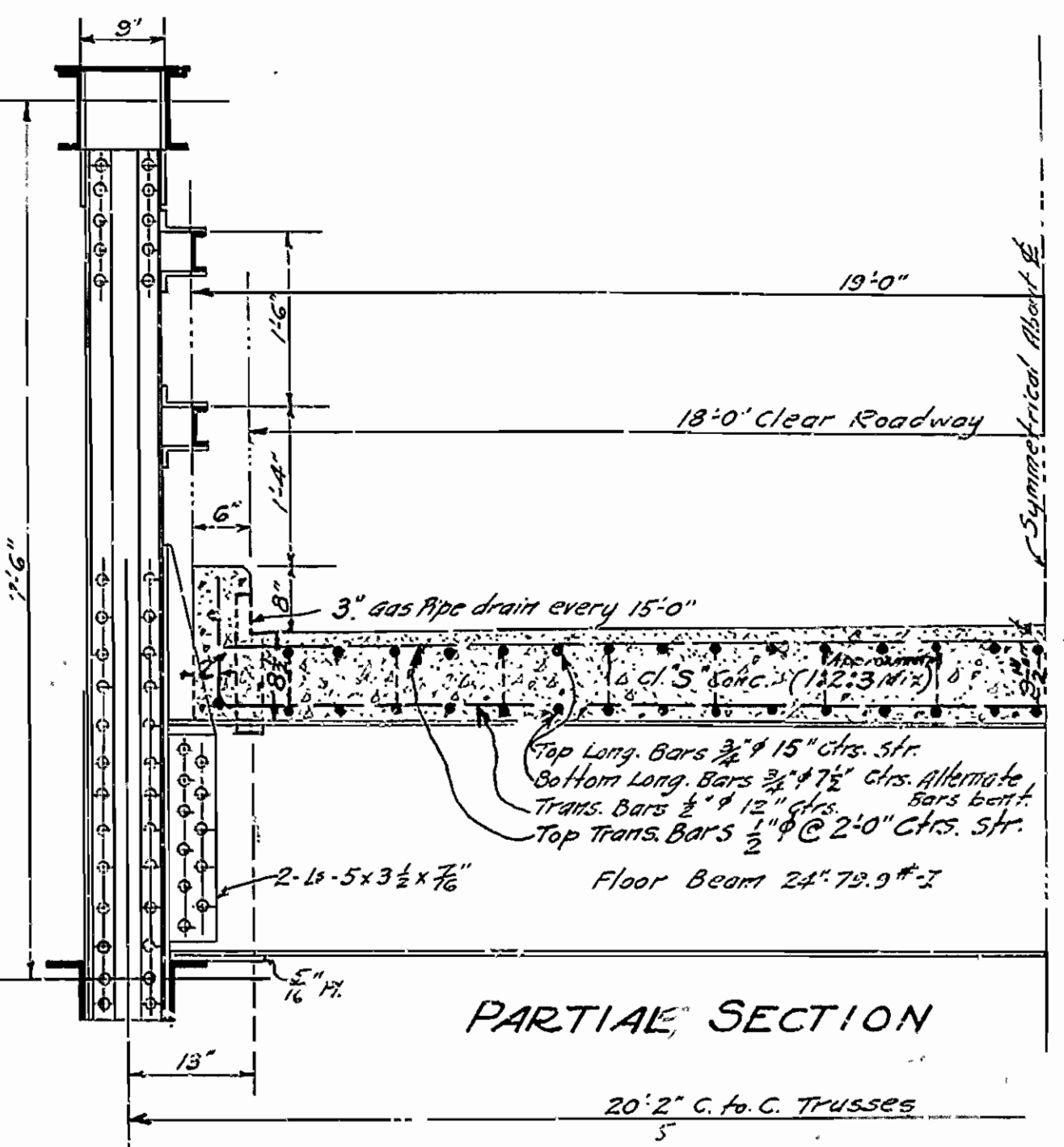
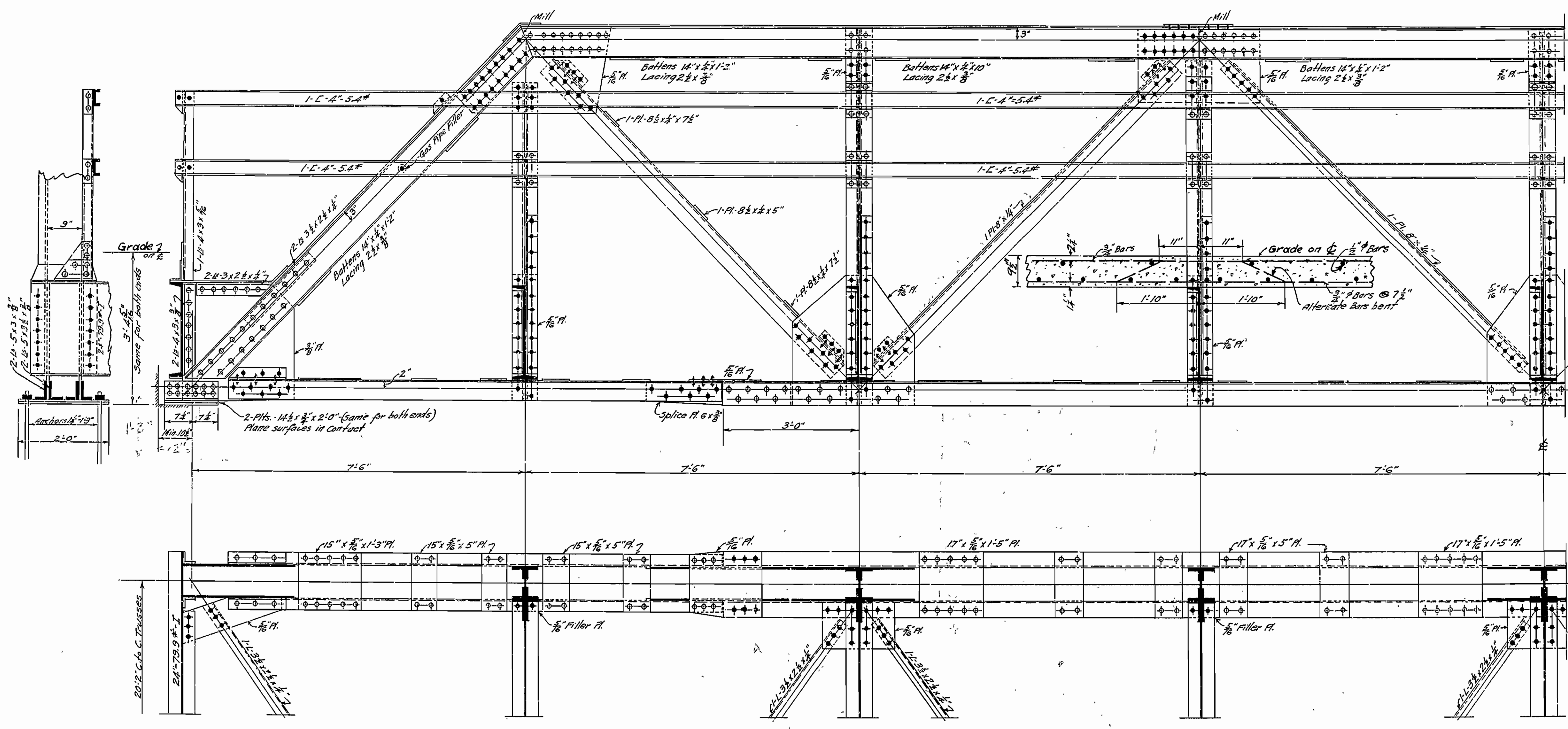
**DETAILS OF SOUTH ABUTMENT**  
**BRIDGE OVER CYPRESS CREEK**  
3 MILES NO. OF SALGOHACHIA, CONWAY CO., STATE HIGHWAY NO. 9  
**ARKANSAS STATE HIGHWAY DEPARTMENT**  
LITTLE ROCK, ARK.  
Designed By: R.E.H. Date: 7/22/27  
Traced By: R.E.H. Date: 7/27/27  
Checked By: Date:  
Scale: 1 inch = 2 feet.  
Bridge No. 327  
Drawing No. 287

*N.B. Jones*  
BRIDGE ENGINEER

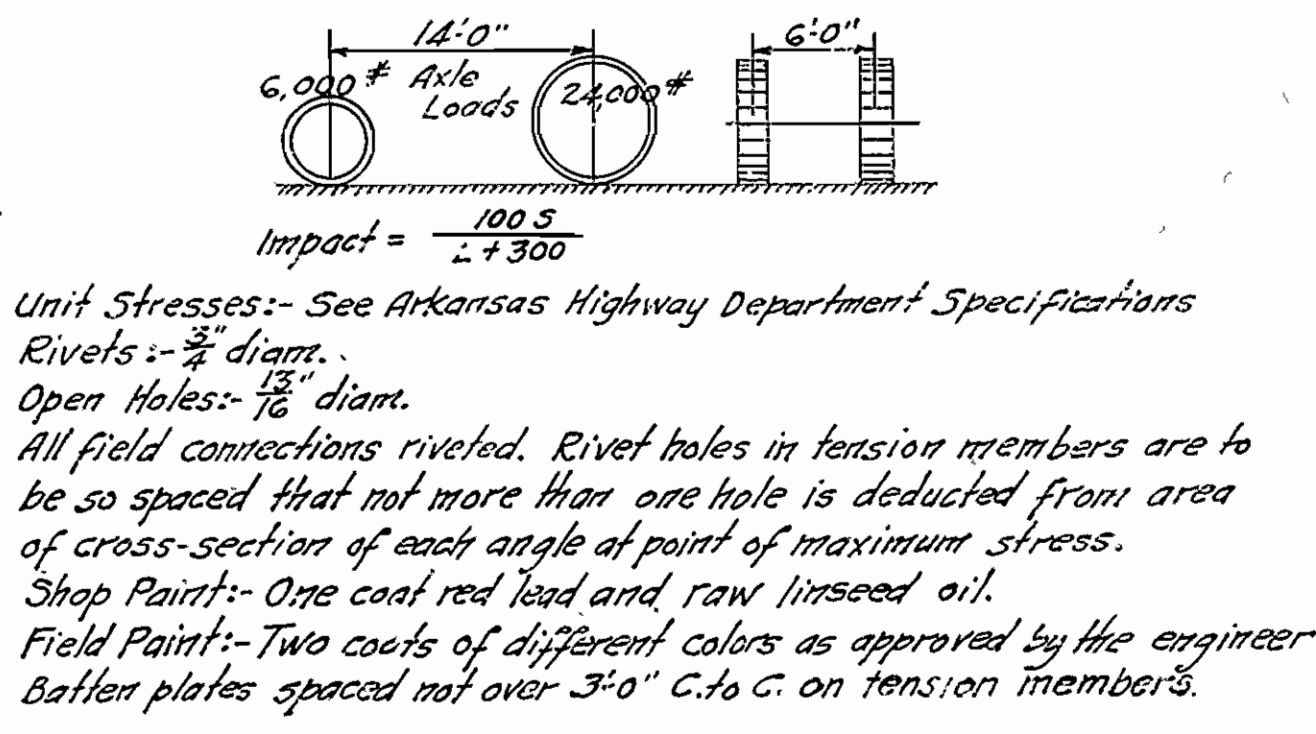


FED. ROAD DIST. NO.	STATE	FED. ROAD DIST. NO.	FISCAL YEAR	SHEET NO.	TOTAL SHEETS
6	ARK.				

60-FT. STEEL HIGHWAY BRIDGE, 18' ROADWAY, CONC. FLOOR, L.R. #52

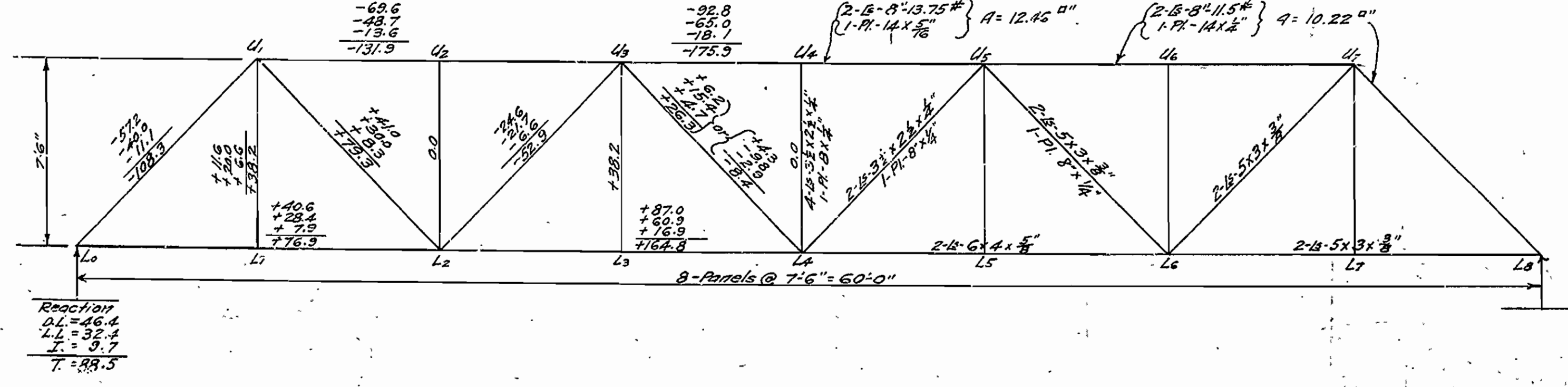
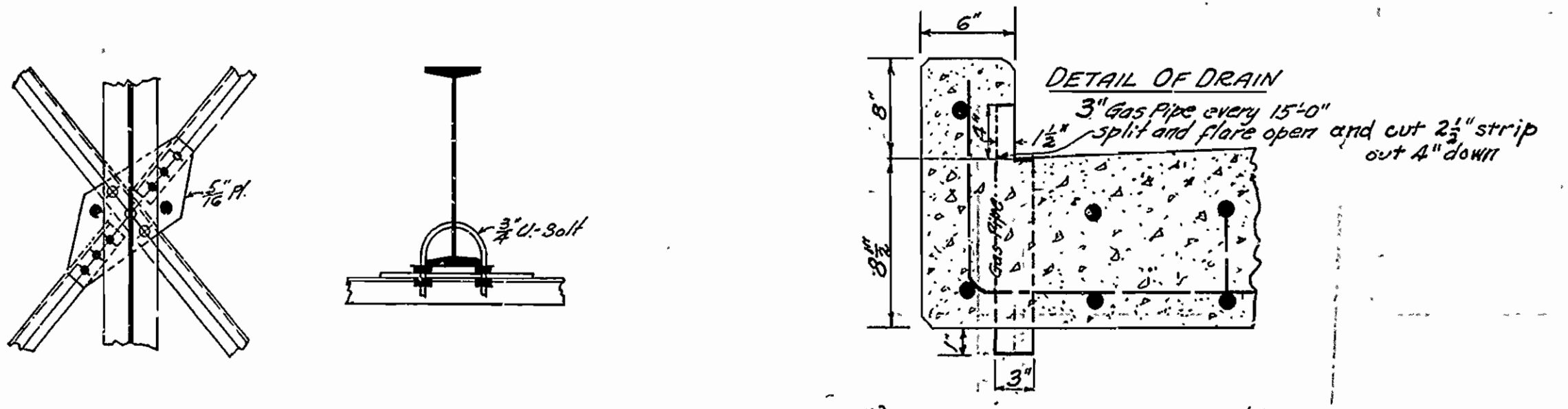


**SPECIFICATIONS.**  
 Live Load: - Uniform, - 80 lbs. per square foot of Roadway  
 Concentrated: - 2-15 Ton Trucks as shown



**FLOOR BEAMS**  
 D.L.M. = 8 x 1040 x 20.17 = 52,500 #  
 L.L.M. = 8.58 x 24000 - 6 x 12000 = 134,000  
 Impact = 30% = 40,200  
 Total = 227,100 #  
 $\frac{227,100 \times 12}{16,000} = 170.5 = \text{Req'd Sec. Mod}$   
 Use 24" 79.9 # I, Sec. Mod. = 173.9  
 Estimated weight of structural steel = 38,450 #  
 Estimated weight of Reinforcing steel = 6,066 # (see note below)  
 and 34.7 cu ft. 3" conc. in floor slab, max. cty. 1".  
 NOTE: This weight includes 68 # for 8-3/8" Gas pipe drains

NOTE: - This drawing is general only. Shop drawings must be made in compliance with specifications and must be submitted and approved before fabrication begins. One (1) inch extra thickness has been added to floor slab for wear.



**STANDARD PLAN**  
**60-FT. STEEL HIGHWAY BRIDGE**  
**18' ROADWAY - CONC. FLOOR**  
**ARKANSAS HIGHWAY DEPARTMENT**  
**LITTLE ROCK, ARK.**

DESIGNED: N.B.G.  
 TRACED: C.J.P.  
 CHECKED: N.B.G.  
 REVISIONS: Rev. 1/24/24, 1/17/24, 1/17/24  
 WALTER K. (1-15-24)

Approved: Chairman, Arkansas State Highway Commission  
 By: State Bridge Engineer  
 Mar. 1924  
 STATE STANDARD No. EST 100A