

STATE OF ARKANSAS
STATE HIGHWAY DEPARTMENT

FISCAL YEAR	JOB NO.	SHEET NO.	TOTAL SHEETS
1928	140	1	11
PLAN OF PROP. BRIDGES			

PLAN OF PROPOSED BRIDGES
ON
FAIR OAKS TO WYNNE ROAD
CROSS COUNTY

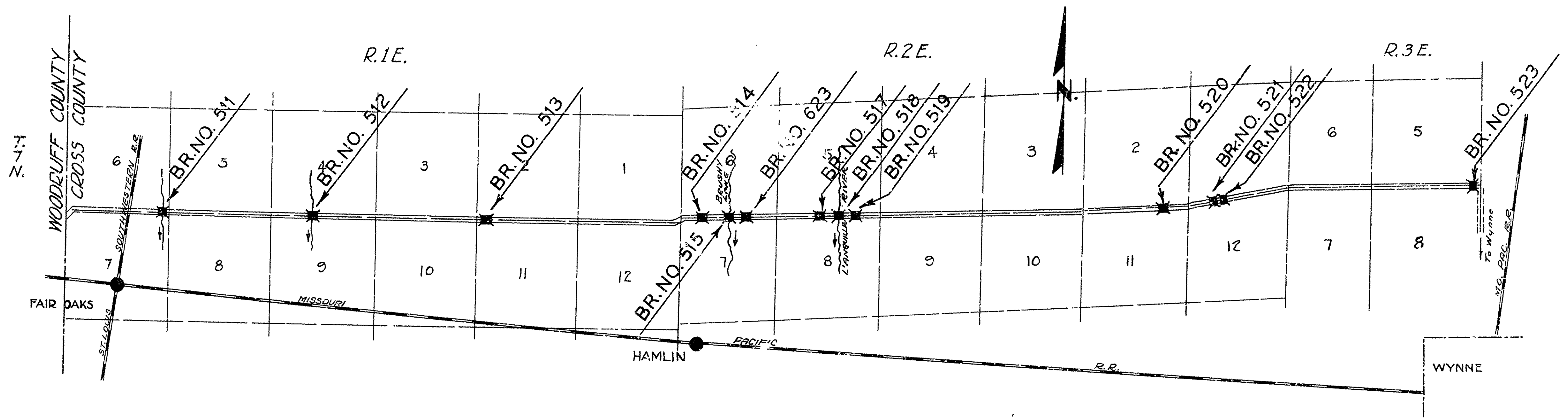
ROUTE 16 SEC. 18
JOB No 140
FEDERAL AID PROJECT No.

INDEX OF SHEETS

SHEET NO.	DRAW. NO.	TITLE & LAYOUT SHEET
1	792	TITLE & LAYOUT SHEET
2	793	LAYOUT BRIDGES 511-512-513
3	794	" " 514-515
4	795	" " 623-517
5	796	" " 518-520
6	797	" " 519
7	625	DETAILS BRIDGE 519
8	81	STANDARD PLAN 70' STEEL PONY SPAN
9	798	LAYOUT BRIDGES 521-522-523
10	13	STANDARD PLAN 20' TR. TIMBER BRIDGE
11	11	" " 21' " " "

QUANTITIES

ITEM NO.	DESCRIPTION	UNIT
12	EARTH EXCAVATION	754 C.Y.
13	DRY EXCAV'N FOR STRUC'S	25 " "
52	UNTREATED BR. TIMBER	8418 MFT. B.M.
52	TREATED BR. TIMBER	263984 " "
56	STRUCTURAL STEEL	65,654 LBS.
67	TREATED TIMBER PILING	9328 LIN. FT.



LAYOUT
Scale: 1" = 3000'
GROSS LENGTH OF PROJECT = 1186'-4"
NET LENGTH OF PROJECT

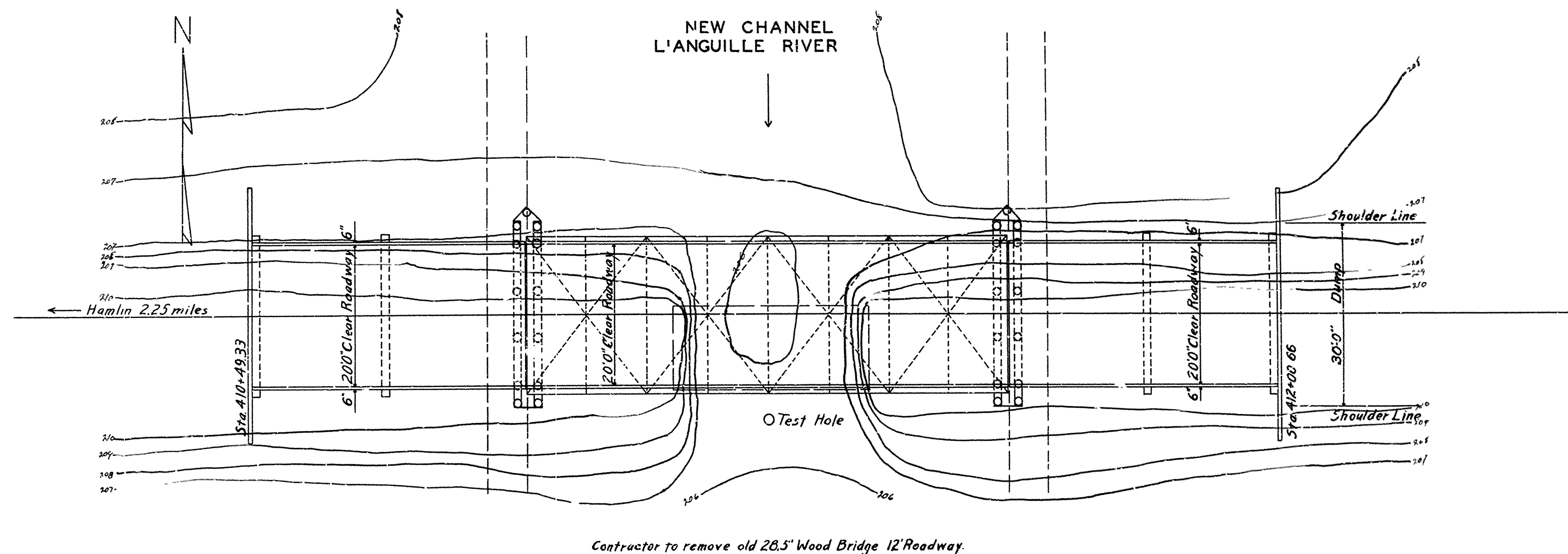
- APPROVED
COMMISSIONER STATE LANDS, HIGHWAYS AND IMPROVEMENTS
- APPROVED
STATE HIGHWAY ENGINEER
- RECOMMENDED FOR APPROVAL
DISTRICT ENGINEER - U. S. BUREAU OF PUBLIC ROADS
- RECOMMENDED FOR APPROVAL
CHIEF ENGINEER - U. S. BUREAU OF PUBLIC ROADS
- APPROVED
DIRECTOR - U. S. BUREAU OF PUBLIC ROADS

M.B. Garver
BRIDGE ENGINEER

BRIDGE No. 511-12-13-14-15
623-517-518-519
520-21-22-23 DRAWING No. 792

FISCAL YEAR	JOB NO.	SHEET NO.	TOTAL SHEETS
1928	140	6	11

LAYOUT BR. NO. 519 CROSS CO. DR. # 797

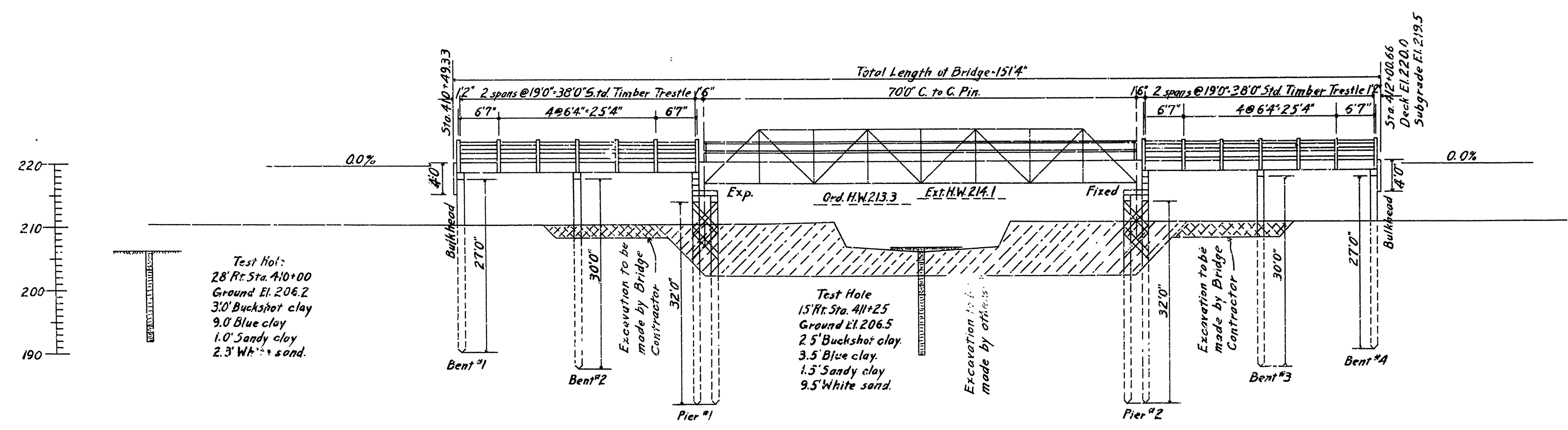


NOTES
 See Drwg. No.13 for Details of Trestle
 See Drwg. No.18 for Details of Truss
 See Drwg. No.625 for Details of Piers
 Lengths of Piling shown are assumed for Estimating.
 Quantities only. Actual Lengths to be determined in the Field.

PLAN
 BR. NO. 519

QUANTITIES

No.12-Earth Excavation.	90 Cu.Yds.
No.52-Untreated Bridge Timber	0.577 M.Ft. B.M.
No.52-Treated Bridge Timber	31,212 " " "
No.56-Structural Steel	65,654 " " "
No.67-Treated Timber Piling.	1396 Lin.Ft.



B.M. Nail in root 12" S.Gum.
 53.5' Rt. Sta. 41+25 El. 213.43
 Total Drainage Area for Bridges No. 517, 518 + 519 = 265 sq. miles

ELEVATION
 BR. NO. 519

LAYOUT
BRIDGE NO. 519
 FAIR OAKS TO WYNNE CROSS CO.
 ROUTE 18 SEC. 18
ARKANSAS STATE HIGHWAY DEPARTMENT
 LITTLE ROCK, ARK.

Drawn By: *EPB* Date: 2/11/28
 Traced By: " Date: 2/11/28
 Checked By: " Date: " " "

Scale: 1 in. = 10 ft.
BRIDGE NO. 519 **DRAWING NO. 797**

M.B. Lawrence
 BRIDGE ENGINEER