

STATE OF ARKANSAS  
STATE HIGHWAY DEPARTMENT

| FISCAL YEAR | JOB NO. | SHEET No. | TOTAL SHEETS |
|-------------|---------|-----------|--------------|
| 1927        | 651     | 1         | 6            |

PROP. SHERIDAN-LEOLA RD. BR. DR. 526

PLAN OF PROPOSED BRIDGE  
SHERIDAN-LEOLA ROAD  
GRANT COUNTY

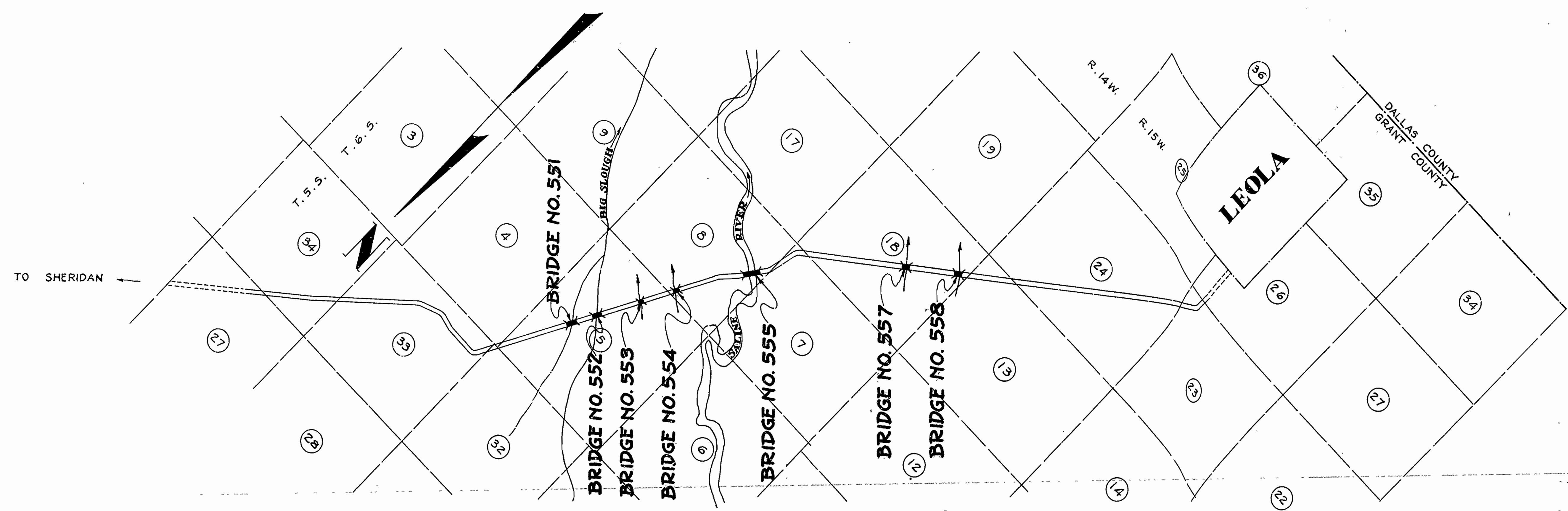
INDEX OF SHEETS

| Sheet No. | Dwg. No. | Title Sheet                    |
|-----------|----------|--------------------------------|
| 1         | 626      | Title Sheet                    |
| 2         | 627      | Layouts of Bridges No. 551-552 |
| 3         | 628      | Layouts of Bridges No. 553-554 |
| 4         | 629      | Layout of Bridge No. 555       |
| 5         | 630      | Layouts of Bridges No. 557-558 |
| 6         | 12       | Standard Overflow Trestle.     |

QUANTITIES

| Item No. | Description             | Quantity             |
|----------|-------------------------|----------------------|
| 52       | Untreated Bridge Timber | 3,746 M. Ft. B. M.   |
| 52       | Treated Bridge Timber   | 109,846 M. Ft. B. M. |
| 67       | Treated Timber Piling   | 3106 Lin. Ft.        |

ROUTE 46 SEC. 2  
JOB No 651  
FEDERAL AID PROJECT No.



LAYOUT  
Scale: 1" = 2000'

GROSS LENGTH OF PROJECT - 618'-4" OR 0.117 MILES  
NET LENGTH OF PROJECT - 618'-4" OR 0.117 MILES

APPROVED  
COMMISSIONER - STATE LANDS, HIGHWAYS AND IMPROVEMENTS

APPROVED  
STATE HIGHWAY ENGINEER

RECOMMENDED FOR APPROVAL  
DISTRICT ENGINEER - U. S. BUREAU OF PUBLIC ROADS

RECOMMENDED FOR APPROVAL  
CHIEF ENGINEER - U. S. BUREAU OF PUBLIC ROADS

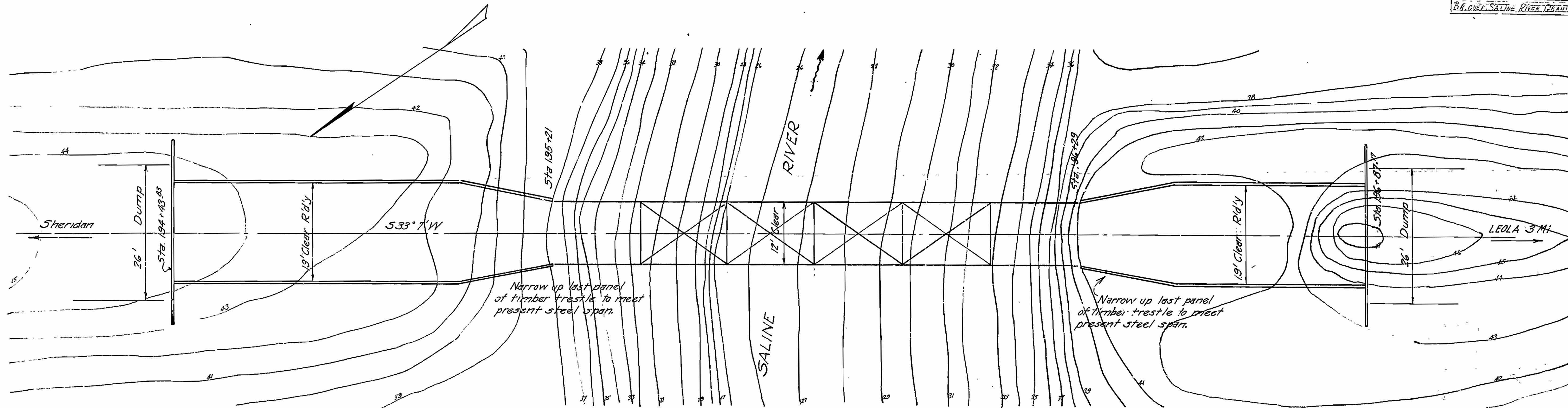
APPROVED  
DIRECTOR - U. S. BUREAU OF PUBLIC ROADS

*N.B. Garner*  
BRIDGE ENGINEER

BRIDGES No. 551 to 558 DRAWING No. 626

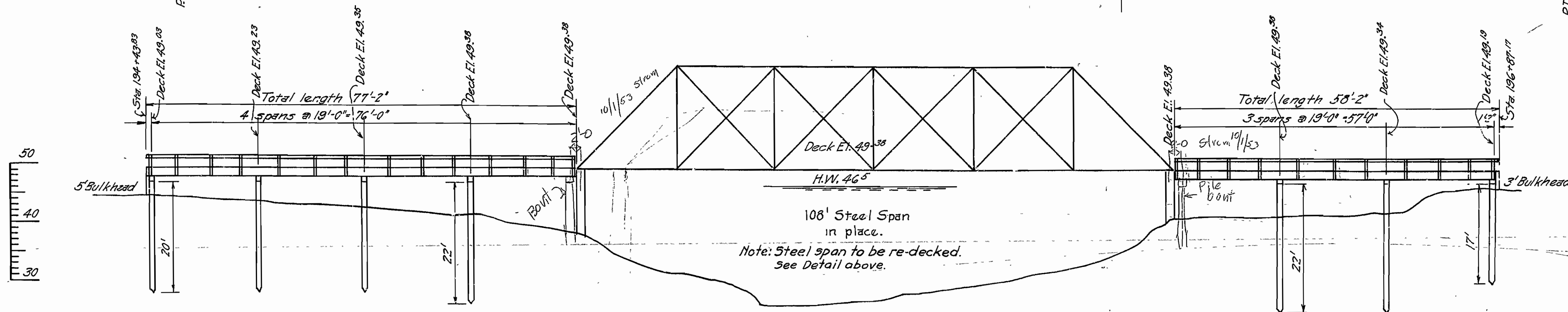
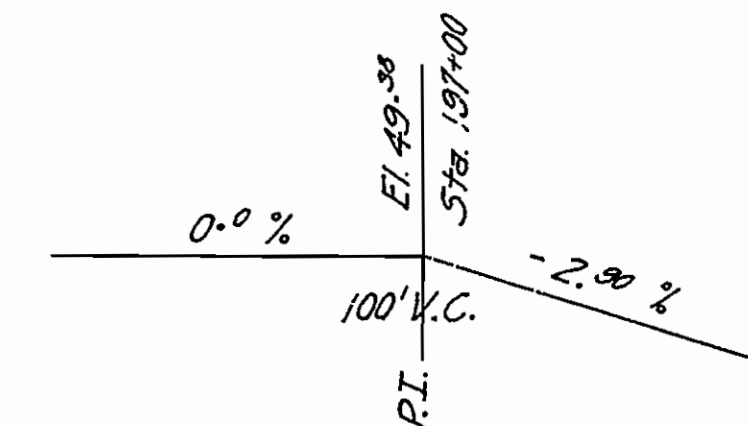
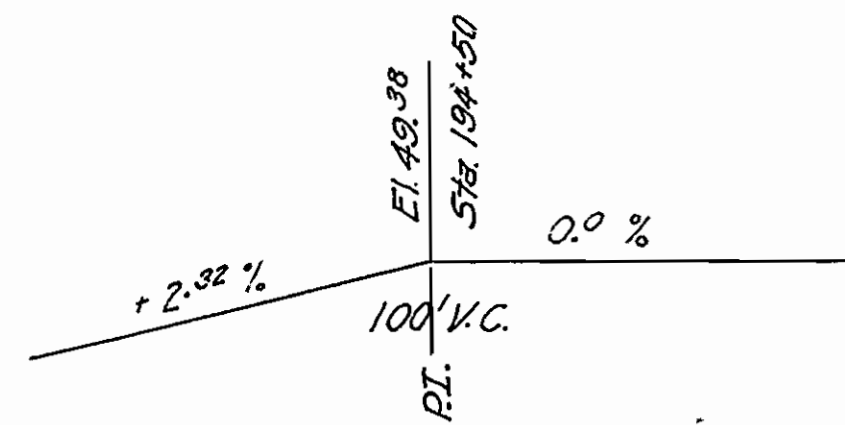
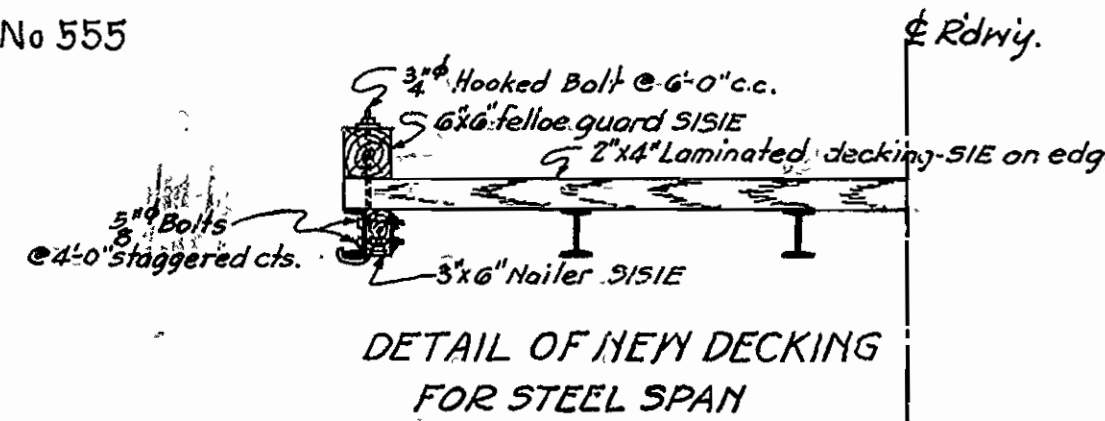
| FISCAL YEAR | JOB NO. | SHEET No. | TOTAL SHEETS |
|-------------|---------|-----------|--------------|
| 1927        | 651     | 4         | 6            |

BRIDGE OVER SALINE RIVER GRANT CO. DR. 621



**QUANTITIES**  
 Treated Timber Piling 646 Lin.ft  
 Treated Bridge Timber 32,635 MB ft  
 Untreated " .948 "

**PLAN**  
 Bridge No 555



**ELEVATION**  
 Scale: 1" = 10'-0"

For Details see Drawing No. 12  
 Lengths of piling shown are assumed for estimating quantities only. Actual lengths to be determined in the field.

BM: #17 El. 49.39  
 Spike on floor of Bridge  
 6' Rt. station 195+24

D.A. 300 sq.mi. Rolling

NOTE: The Bridge Contractor will be required to maintain traffic.

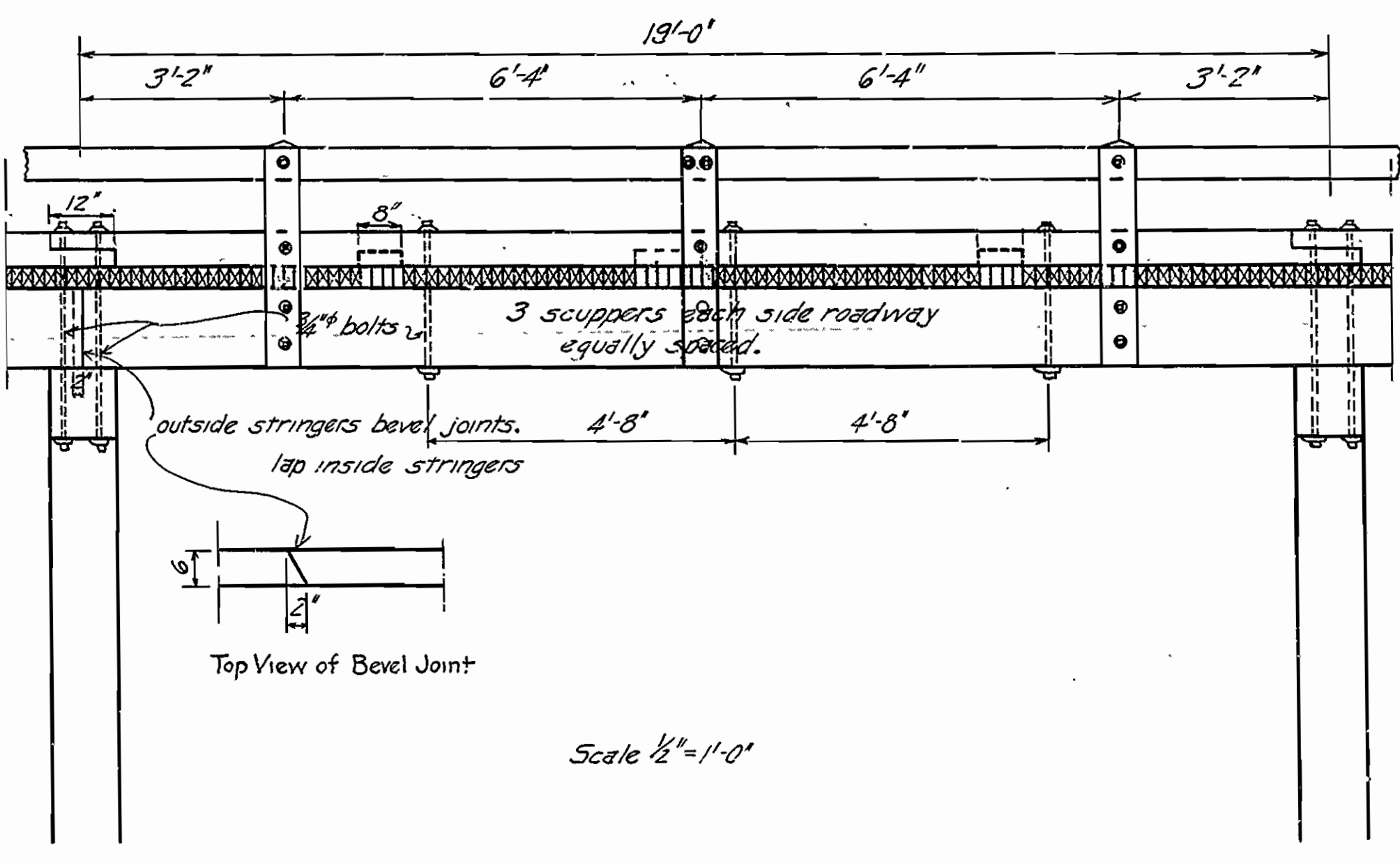
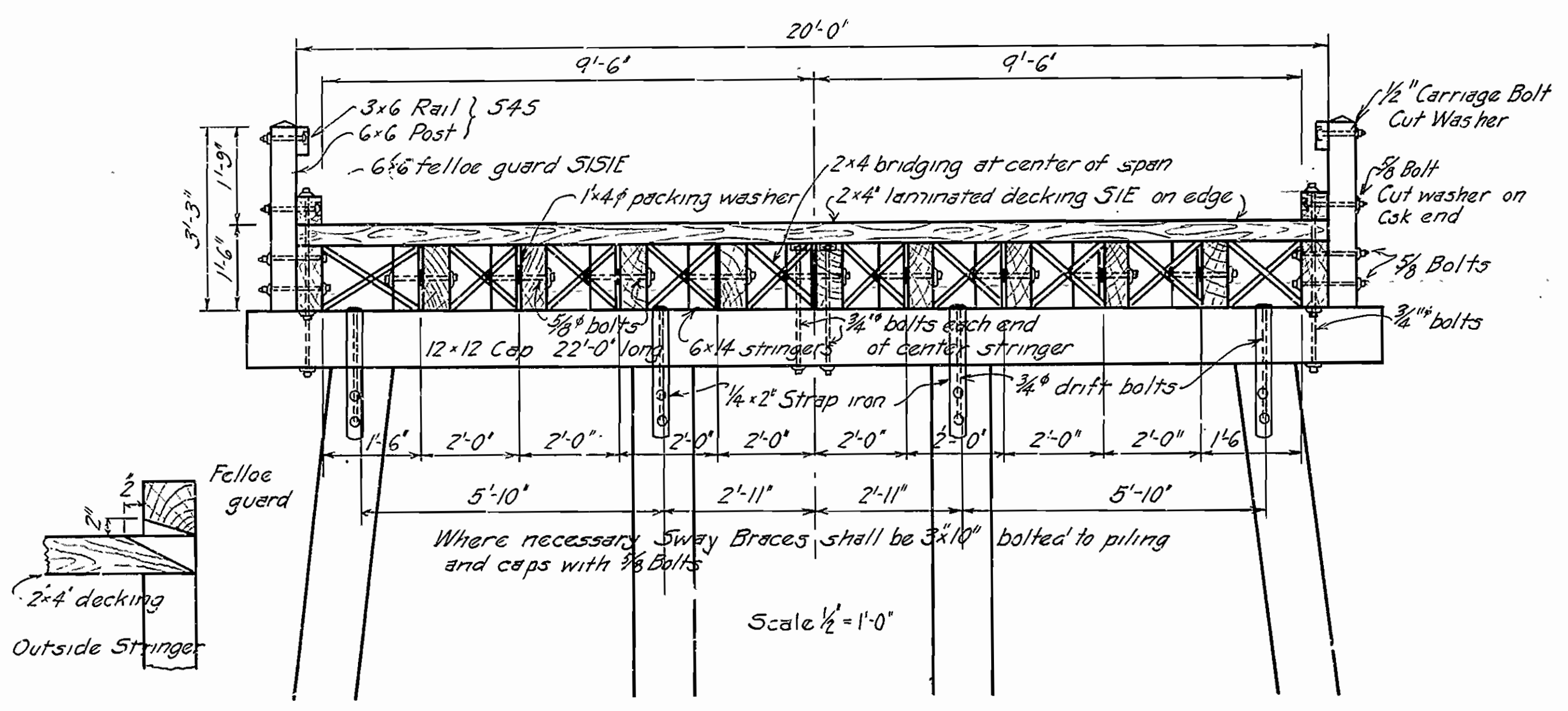
LAYOUT  
 BRIDGE OVER SALINE RIVER  
 LEOLA-SHERIDAN ROAD GRANT CO.  
 ROUTE SEC:  
**ARKANSAS STATE HIGHWAY DEPARTMENT**  
 LITTLE ROCK, ARK.  
 Drawn By: CAD Date: 5/1/27  
 Traced By: Date:  
 Checked By: Date:  
 Scale: 1 in. = 10' ft.  
**BRIDGE NO. 555 DRAWING NO. 629**

*W.B. Weaver*  
 BRIDGE ENGINEER



|             |           |              |
|-------------|-----------|--------------|
| FISCAL YEAR | SHEET NO. | TOTAL SHEETS |
|             |           |              |

OVERFLOW TREATED TIMBER TRESS T.E.L.V. 2



Handrail and Posts shall be made of untreated seasoned, dressed lumber, painted with three coats of paint as per paragraph 52.3(a) of Specifications. Each stringer to be spiked to caps with 4-40d spikes and to be sized at bearing points in field. 2x4 laminated decking S/E. Each piece to be nailed to each adjacent piece once between each stringer with 30d spike. Each piece to be nailed to alternate stringers with 20d spikes. Alternate pieces nailed to alternate stringers. Random length pieces 2x4 decking may be used under the following conditions:

1. Each joint to be made on stringers.
2. Each piece shall cover at least 3 stringers.
3. One joint only in any lamina.
4. Each joint to be followed by at least 3 full length pieces.

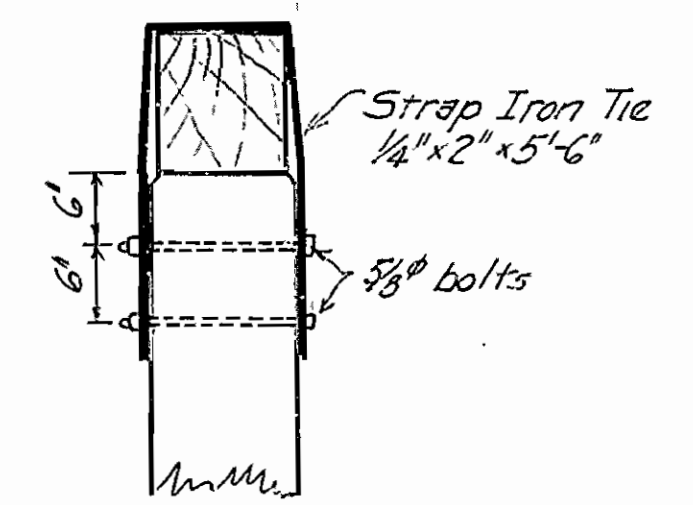
Use sway bracing on all bents 6'-0" or over in height. Use malleable or cast iron washers on both ends of machine bolts unless noted otherwise. All timber and piling to be treated, by empty cell process in accordance with paragraph 52.2(d) of Arkansas State Standard Specifications.

**SPECIFICATIONS**  
Arkansas State Road and Bridge Specifications adopted May 30, 1925

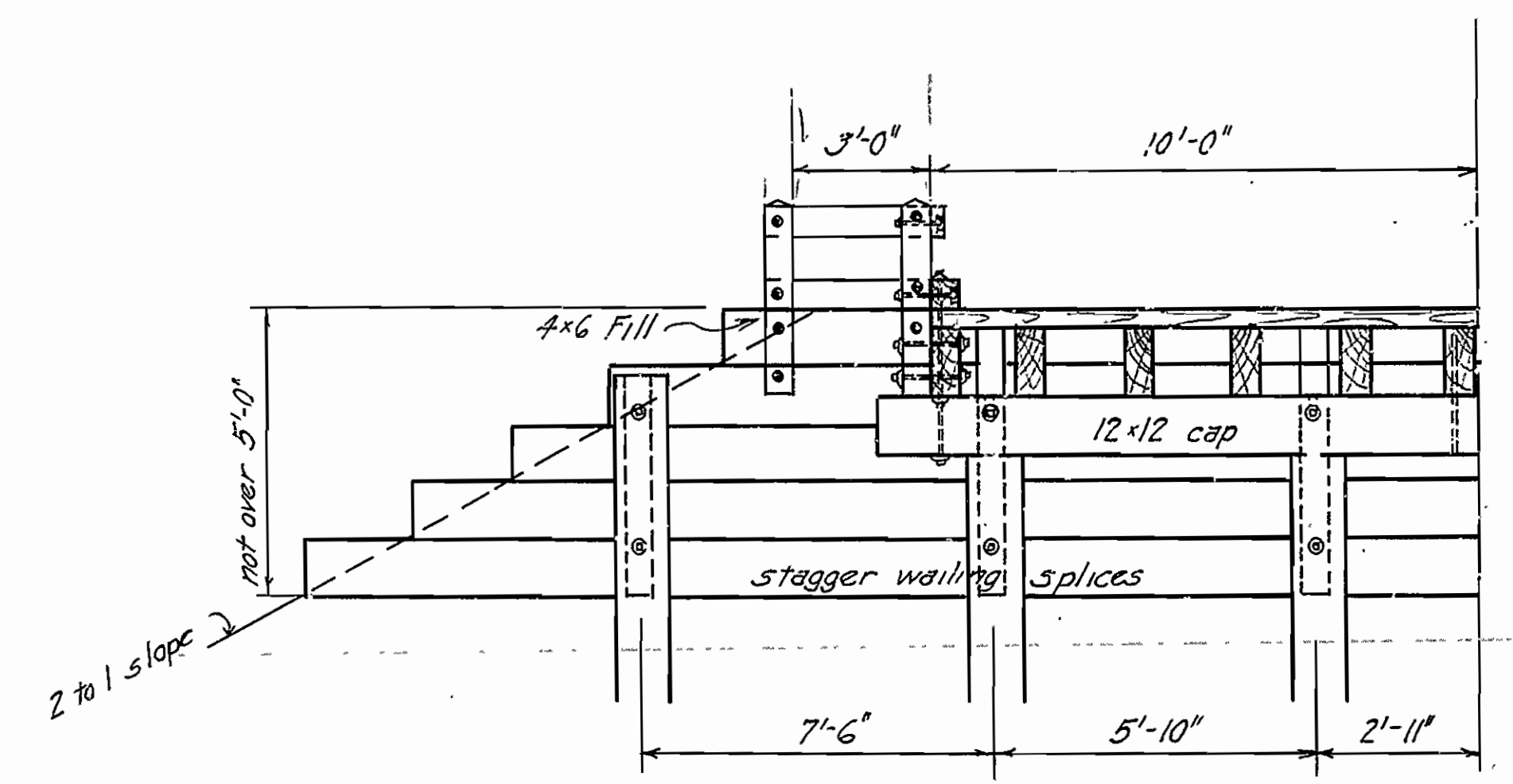
SCUPPER DETAIL

CROSS SEC. ROADWAY

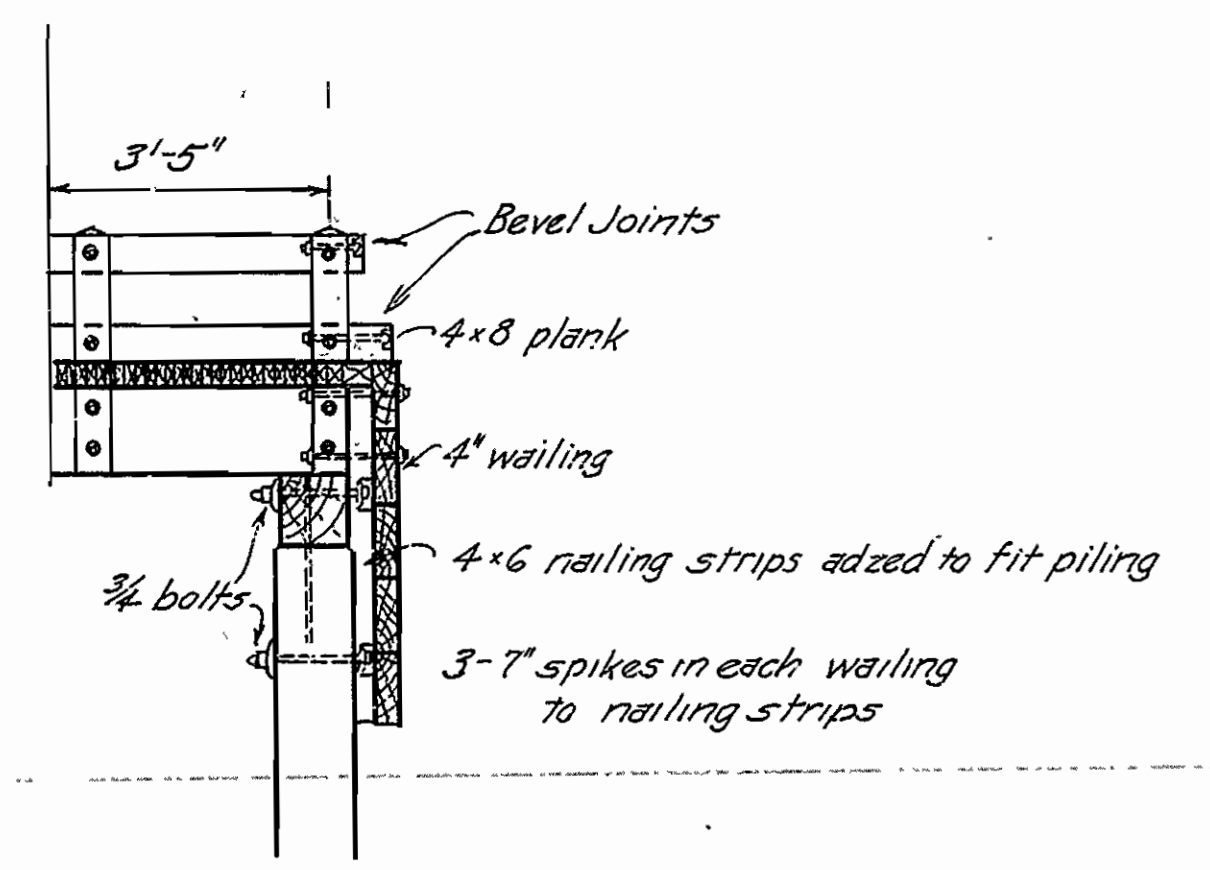
ELEVATION



DETAIL PILING TIE



ABUTMENT DETAILS



DETAILS OF STANDARD  
OVERFLOW TREATED TIMBER TRESSLE  
19'-0" SPAN      19'-0" ROADWAY  
ROUTE      SEC.  
**ARKANSAS STATE HIGHWAY DEPARTMENT**  
LITTLE ROCK, ARK.

Drawn By: \_\_\_\_\_ Date: \_\_\_\_\_  
Traced By: \_\_\_\_\_ Date: \_\_\_\_\_  
Checked By: \_\_\_\_\_ Date: \_\_\_\_\_  
Scale: in. = ft.  
BRIDGE NO. \_\_\_\_\_ DRAWING NO. 12

*M.B. Lantz*  
BRIDGE ENGINEER