

STATE OF ARKANSAS
STATE HIGHWAY DEPARTMENT

FISCAL YEAR	JOB NO.	SHEET NO.	TOTAL SHEETS
1928	578	1	24

Prop. Batesville, Pleas. Plains Rd. Ind. Co. Dr. 1207

PLAN OF PROPOSED BRIDGES
ON
BATESVILLE-PLEASANT PLAINS ROAD
INDEPENDENCE COUNTY

INDEX OF SHEETS

Sheet No.	Drwg No.	Title
1	1207	Title Sheet to Bridges No.559 to 565
2	1208	Layout Sheet Bridge No.559
3	1209	Detail of Abutments-Bridge No.559
4	1210	Layout Sheet Bridge No.560
5	1211	Substructure Details-Bridge No.560
6	1212	Layout Sheet Bridges No.561 and 562
7	1213	Detail of Abutments-Bridge No.561
8	1214	Detail of Internal Bent-Br.No.561
9	1215	Substructure Details-Br.No.562
10	1216	Layout Sheet No.563
11	1217	Substructure Details-Bridge No.563
12	1218	Layout Sheet Bridge No.564
13	1219	Details of Abutment No.1 and Int.Bents-Br.No.564
14	1220	Details of Abutment No.2-Br.No.564
15	1221	Layout Sheet Bridge No.565
16	1222	Details of Abutment and Int. Bent No.1-Br.No.565
17	1223	Details of Piers, Bents No. 2,3,4,5 and 6, and End Bent-Br.No.565
18	1001	Standard 25' R.C.D. Girder, 20' Roadway
19	1007	" " " " " " 60° Skew, Lt.
20	1002	" 30' " " " " " "
21	1003	" 35' " " " " " "
22	1083	" 120' High Truss Span
23	Fs-30A	Typical Cross Section, 30' Roadway
24		Cross Section Sheets

ROUTE 11 SEC. 14
JOB No 578
FEDERAL AID PROJECT No.

QUANTITIES

Item No. 12	Solid Rock Excavation	458 cu. yds.
" "	12 Common	5912 " "
" "	13 Dry Excavation for Strucs.	1099 cu. yds.
" "	13 Wet	1085 " "
" "	13 Rock	2375 " "
" "	17 Borrow	39036 " "
" "	54 Class "A" Concrete	962.77 " "
" "	54 " "S" "	705.33 " "
" "	55 Reinforcing Steel	288,017 lbs.
" "	56 Structural Steel (trusses)	109,765 " "
" "	69 Rip Rap	171 sq. yds.
" "	74 Concrete Handrail	1533 lin. ft.

Note:
Contractor to remove all existing structures on the right of way, in "Bridge Exceptions."



LAYOUT
Scale: 1"=1Mi.

GROSS LENGTH OF PROJECT 6175'-0" = 1.128 MI.
NET LENGTH OF PROJECT 6175'-0" = 1.169 MI.

APPROVED, _____
COMMISSIONER STATE LANDS, HIGHWAYS AND IMPROVEMENTS

APPROVED, _____
STATE HIGHWAY ENGINEER

RECOMMENDED FOR APPROVAL _____
DISTRICT ENGINEER - U. S. BUREAU OF PUBLIC ROADS

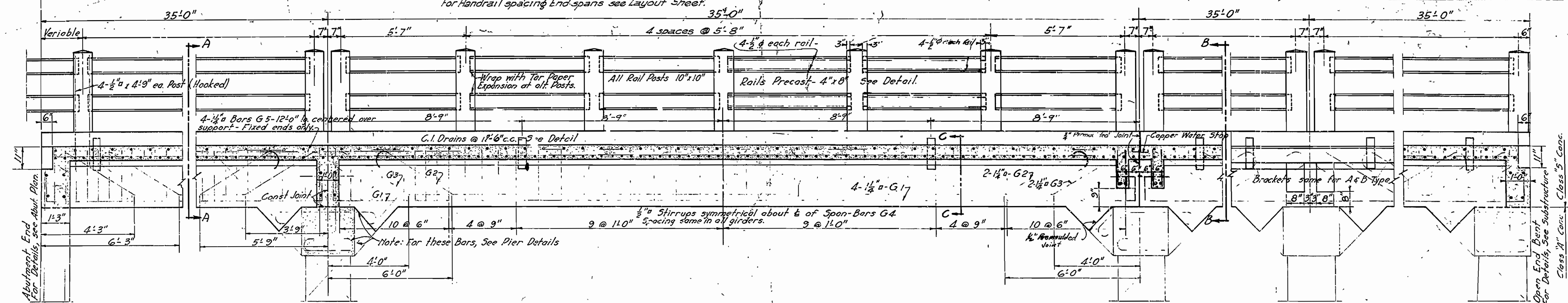
RECOMMENDED FOR APPROVAL _____
CHIEF ENGINEER - U. S. BUREAU OF PUBLIC ROADS

APPROVED, _____
DIRECTOR - U. S. BUREAU OF PUBLIC ROADS

N.B. Lawrence
BRIDGE ENGINEER

Rev.	By	Date	Rev.	By	Date	SHEET	TOTAL
6	ARK					1	1

Handrail spacing as shown below for all Int. spans.
For Handrail spacing End-spans see Layout Sheet.

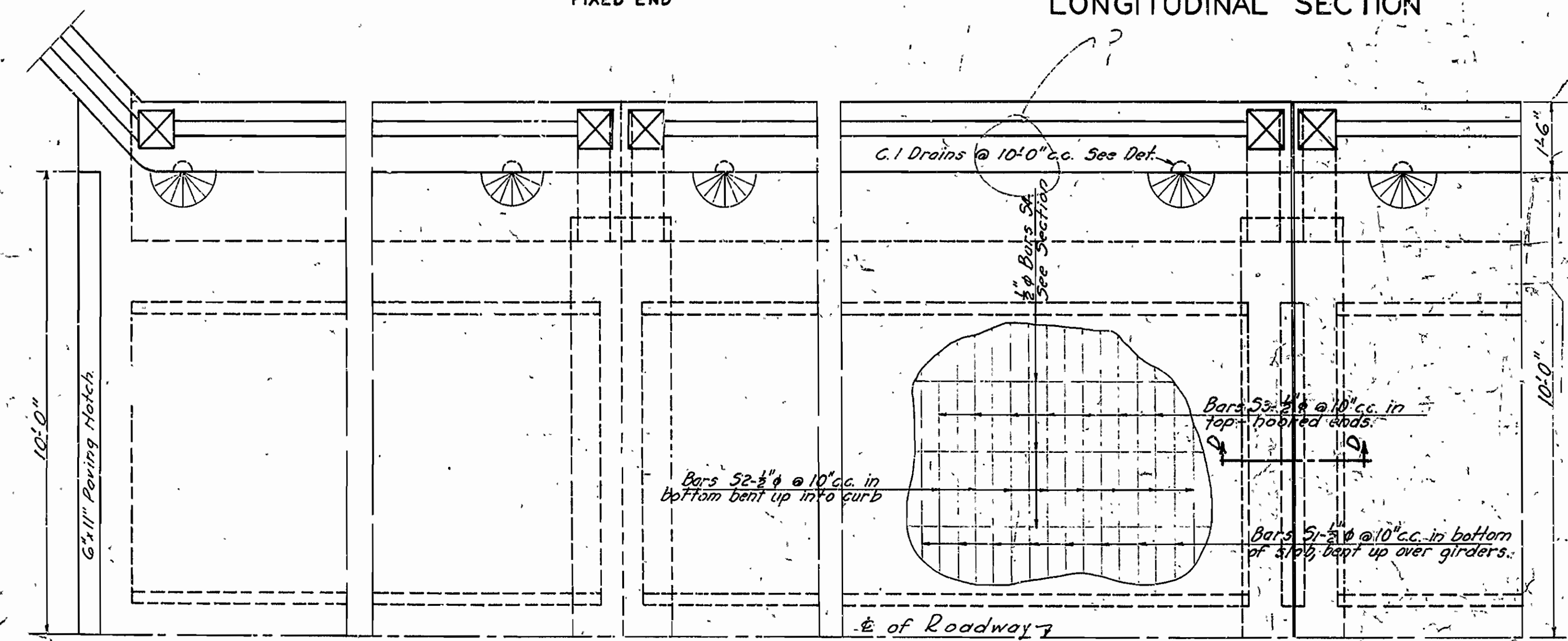


TYPE A
FIXED END

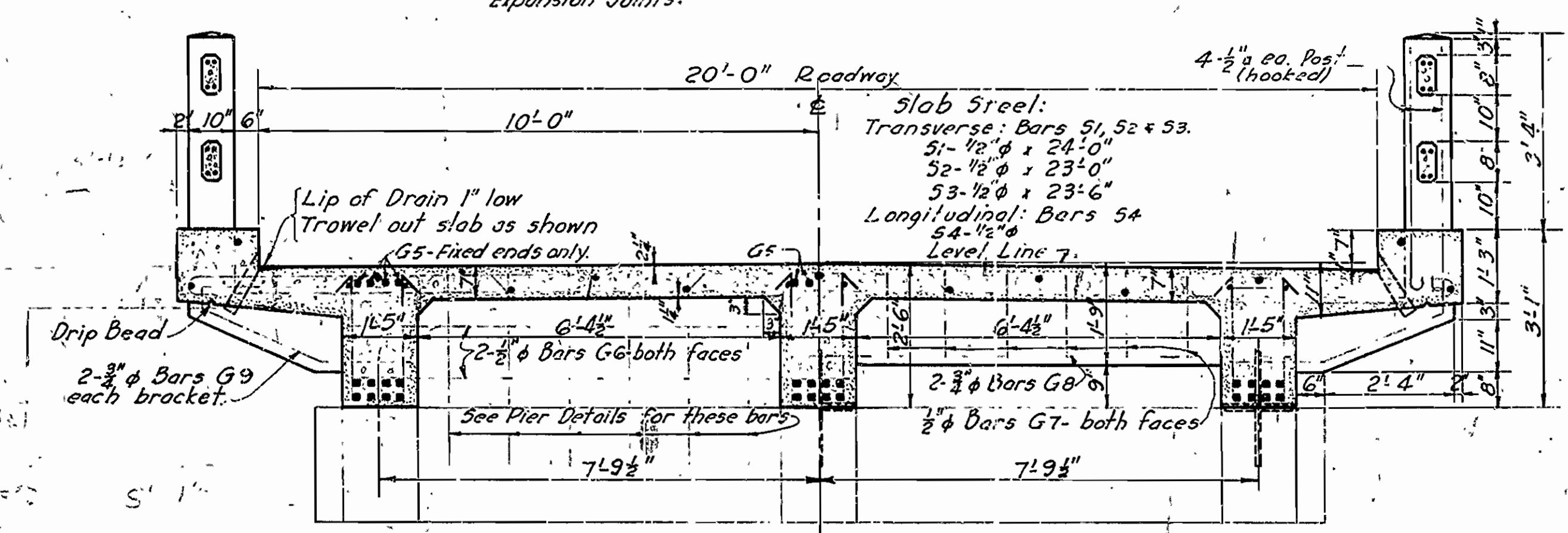
LONGITUDINAL SECTION

TYPE B
EXPANSION END

DETAIL OF BRACKETS



HALF PLAN



SECTION A-A

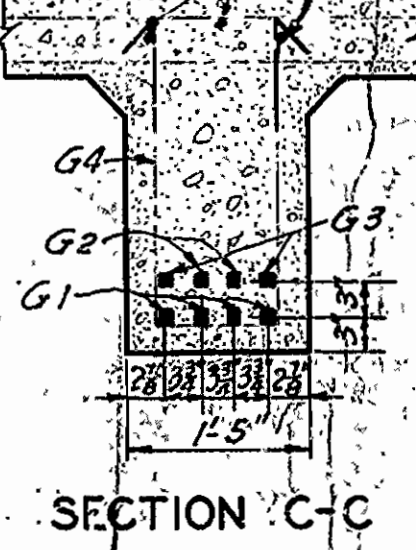
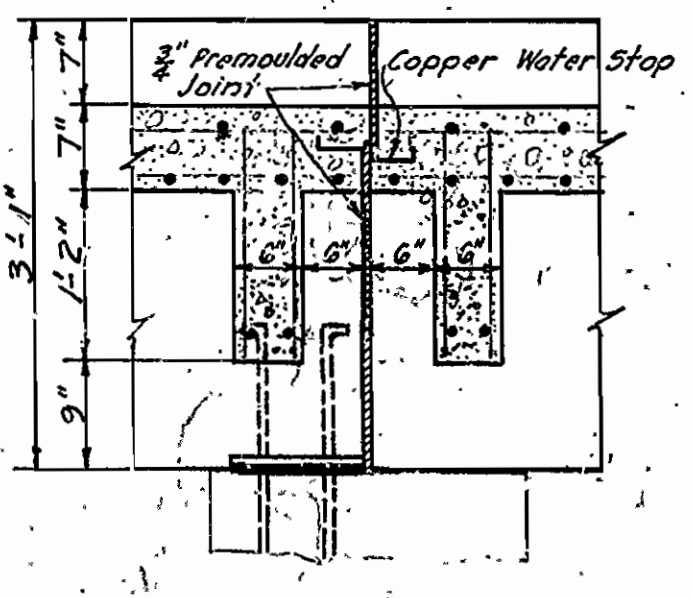
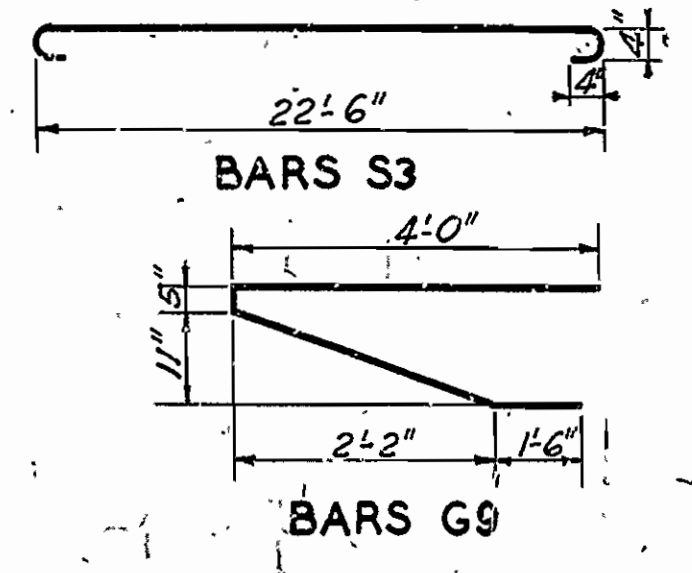
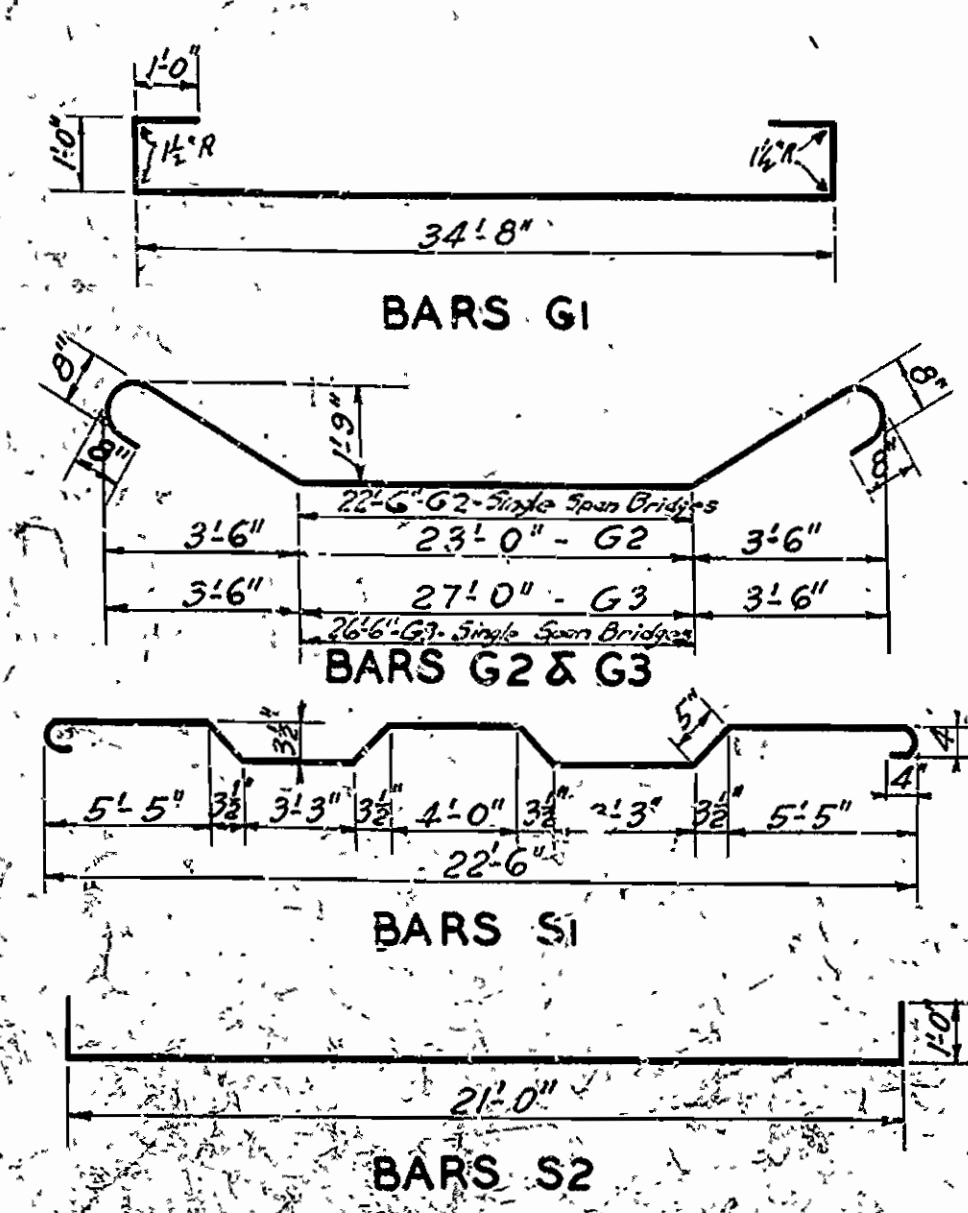
SECTION B-B

DETAIL OF COPPER WATER STOP

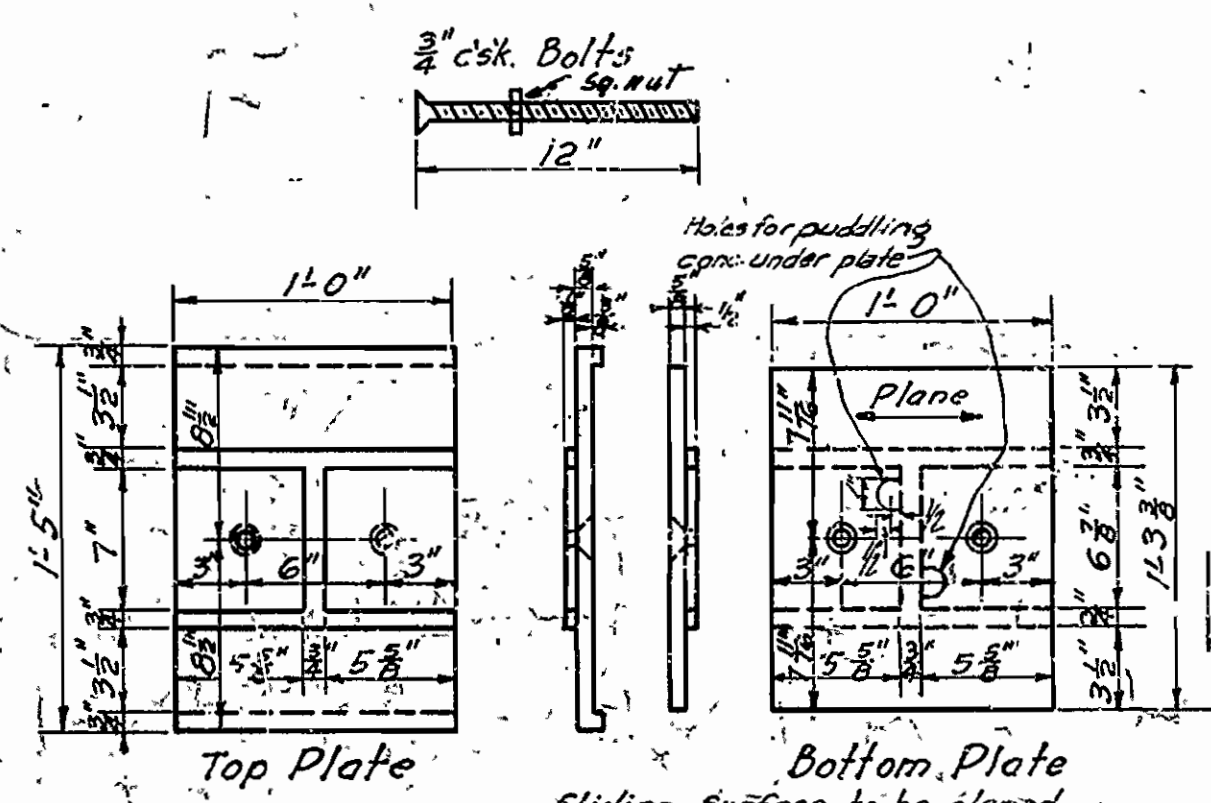
GENERAL NOTES

All exposed corners to have 3/4" chamfer unless otherwise noted.
Precast Concrete Handrails to be 1-1/2" Max. Maximum aggregate 3/4".
Rail Posts to be Class "5" Concrete.
Reinforcing Steel to be deformed bars of Structural or Intermediate Grade. Shop List and Bending Diagrams of Steel must be submitted by Contractor before fabrication is begun.
Roadway Drains and Expansion Devices to be paid for at unit price bid for Reinforcing Steel.
All concrete above top of Column Caps, except Handrail, to be Class "5"; below, Class "A".
Specifications: Arkansas Standard Road and Bridge Specifications adopted May 30th 1925, and revised.
All concrete to be poured in the dry.

Note: This Drawing included in Job No. 10462
9357, 9327, 15124, 4475. For reference only.



SECTION SHOWING EXPANSION PLATES



DETAILS OF BRONZE EXPANSION PLATES
3" pair required at each Exp. Joint.

DETAILS
STANDARD 35' R.C. DECK GIRDER
20'-0" ROADWAY

ROUTE SEC.
ARKANSAS STATE HIGHWAY DEPARTMENT
LITTLE ROCK, ARK.
Drawn By: [Name] Date: 2-22-28
Checked By: [Name] Date: 3-21-28
Scale: 1/4" = 1'-0"
BRIDGE NO. [] DRAWING NO. 1003

FISCAL YEAR	SHEET NO.	TOTAL SHEETS

FED. ROAD	STATE	FISCAL YEAR	SHEET NO.	TOTAL SHEETS

