

STATE OF ARKANSAS
STATE HIGHWAY COMMISSION

FISCAL YEAR	JOB NO.	SHEET NO.	TOTAL SHEETS
1929	7104	1	11

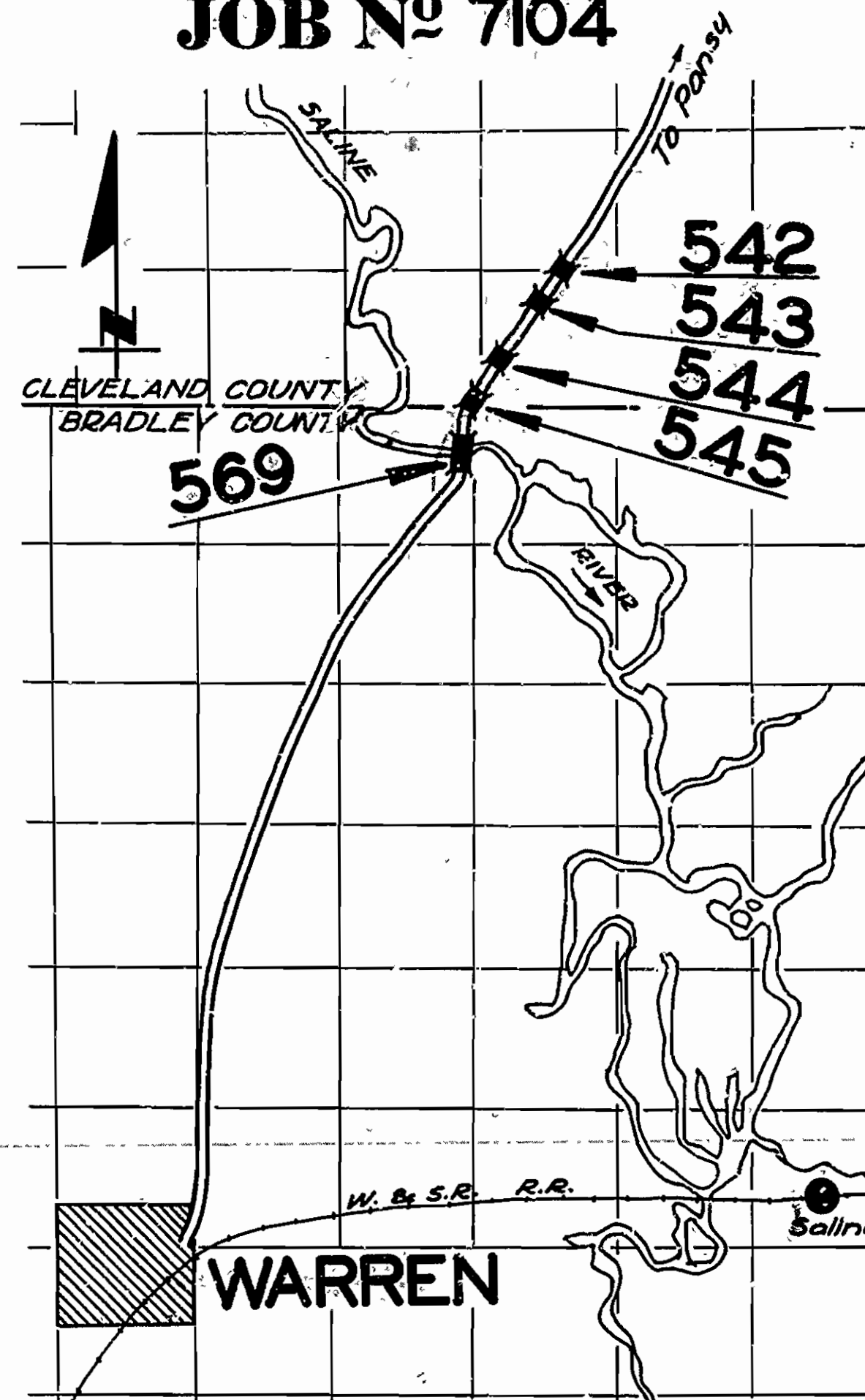
Prop. Brs. Saline R. Civ. Co. DR #1518

INDEX OF SHEETS

Sheet No.	Drawing No.	Title
1	1618	Title Sheet
2	1619	Layout Bridge No. 542
3	1620	" " " 543
4	1621	" " " 544
5	1622	" " " 545
6	1623	Part Layout Br. No. 569
7	1624	" " " " "
8	1625	Details Piers Br. No. 569
9	1019	St'd. 35'-0" R.C.D. Girder, 20' Rdwy.
10	1029	Hand Rail Details
11	1087	St'd. 160'-0" Steel Truss Span

PLAN OF PROPOSED BRIDGES
OVER
SALINE RIVER
CLEVELAND & BRADLEY COUNTY

ROUTE 15 SEC. 5 & 4
JOB No 7104



QUANTITIES

Item No. 13	Dry Excavation for Struct's	442 Cu. Yds.
" 13	Wet	676 " "
" 17	Borrow	1,050 " "
" 54	Class "A" Concrete	39,442 " "
" 54	" "S" "	1,608.54 " "
" 55	Reinforcing Steel	403,700 Lbs.
" 56	Structural Steel (Trusses)	330,350 " "
" 66	Untreated Timber Filling	2,420 Lin. Ft.
" 68	Precast Concrete Filling	6,120 " "
" 69	Rip Rap (1'-0" thick)	2,421 Sq. Yds.
" 74	Concrete Railing	2,740 Lin. Ft.
S.P.	Seal Concrete	130.40 Cu. Yds.
S.P.	Removal of Existing Structures	Lump Sum

SPECIAL PROVISIONS

Item	No. of Sheets
Precast Concrete Pile	3
Seal Concrete	2
Removal of Existing Structures	1
Engineer's Field Office	1

LAYOUT

Scale: 1"=1 MI.

LENGTH OF PROJECT = 1659'0" = 0.3142 MI.
LENGTH OF BRIDGES = 1659'0"

The Specifications adopted by the State Highway Commission, May 30th, 1928 apply with subsequent revisions and Special Provisions noted apply to this Project.

- Pamphlet A Revised Sept. 1st, 1928
- " B
- " C
- " D Revised July 1st, 1928
- " E
- " F
- " G
- " H Revised Oct. 1st, 1928
- " I
- " J Revised Jan. 1st, 1929
- " K
- " L Revised Jan. 1st, 1929

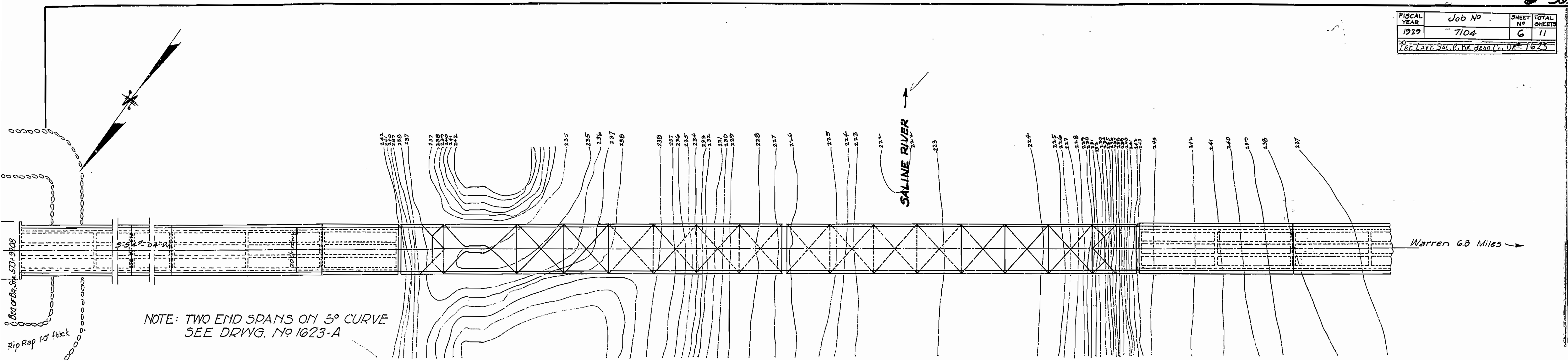
APPROVED
[Signature]
CHAIRMAN - STATE HIGHWAY COMMISSION

APPROVED
[Signature]
STATE HIGHWAY ENGINEER

M.B. Lane
BRIDGE ENGINEER

BRIDGES No. 542-3-4-5 & 569 DRAWING No. 1618

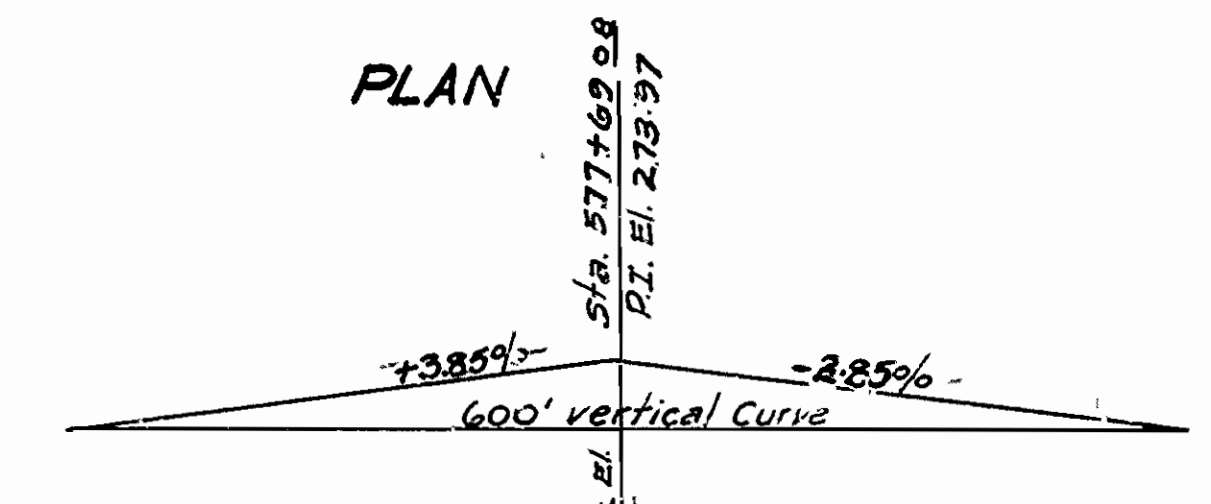
FISCAL YEAR	Job No	SHEET NO	TOTAL SHEETS
1979	7104	6	11
187 LAY. SAL. R. BR. ROAD L. D. 1623			



NOTE: TWO END SPANS ON 5° CURVE
SEE DRWG. NO 1623-A

Item No	Quantities
13 Dry Excavation	442 cu. yds.
13 Wet	676 "
17 Borrow	225 "
54 Class 5 Concrete	7000 "
54 Class A	394.42 "
54 Seal Concrete	130.40 "
53 Reinforcing Steel	24150 lbs.
56 Structural Steel (Trusses)	330,350 lbs.
66 Untreated Timber Piling	2,420 lin. ft.
68 Precast Concrete Piling	240 "
69 Rip Rap	675 sq. yds.
74 Concrete Railing	1495 lin. ft.

PLAN



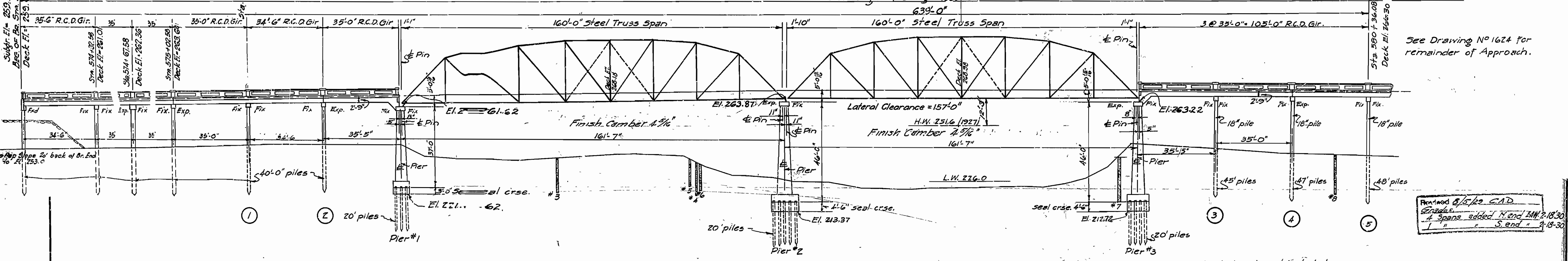
Note: - The existing structure over the main river channel is approximately 500 ft. upstream from the location of the proposed bridge.

Note: Bridge Contractor to Construct Emb. around Bridge Ends.

B.M. # 38 El. 244.90 nail in Root 24" white oak 112' Rt. Sta. 572+30

B.M. # 39 El. 243.49 nail in root 28" sweet gum 95' Rt. Sta. 579+40

Total Length of Bridge = 1059'-6"



ELEVATION

Volume occupied by embedded pile heads not included in pay quantity of concrete in Footing.

Lengths of piling shown are assumed for Estimating Quantities only. Actual lengths to be determined in the field.

Test Hole #3 13' Lt. Sta. 576+64 Gr. Elev. 235.9 16.0 sand	Test Hole #4 12' Lt. Sta. 577+28 Gr. El. 235.2 16.7 sand	Test Hole #6 18' Lt. Sta. 577+30 Gr. El. 235.8 12.0 sand	Test Hole #5 16' Lt. Sta. 577+25 Gr. El. 235.3 12.4 sand	Test Hole #7 12' Lt. Sta. 579+22 Gr. El. 236.6 11.9 sand	Test Hole #8 2' Lt. Sta. 580+21 Gr. El. 237.2 3.0 sandy clay 13.3 sand
---	---	---	---	---	--

See Drwg No 1087 For Details of Trusses
" " " 1625 " " Piers
" " " 1019 " " R.C.D. Gir.
" " " 1029 " Handrail Details

PART LAYOUT
BRIDGE OVER SALINE RIVER
PANSY SO. ROAD
BRADLEY COUNTY
ROUTE 15 SEC. 4

ARKANSAS STATE HIGHWAY DEPARTMENT
LITTLE ROCK, ARK.

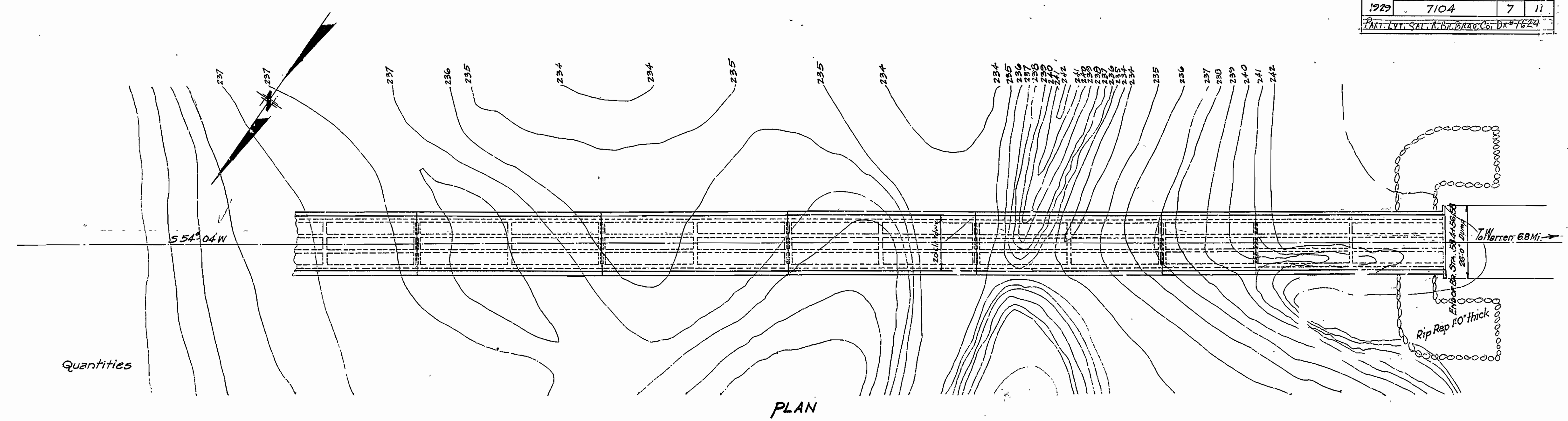
Drawn By: E.P.B. Date: 5/10/79
Traced By: E.M.G. Date: 5/10/79
Checked By: C.A.P. Date: 5/17/79
BRIDGE NO 369 DRAWING NO 1623

M.B. [Signature]
BRIDGE ENGINEER

Scale: 1" = 20'

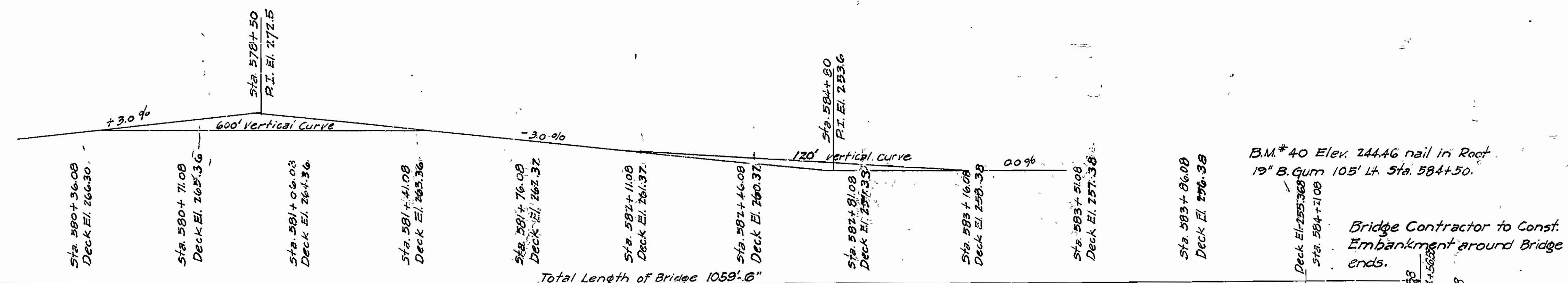
Revised 8/5/79 CAD
4 Spans added N end B.M. 2-18-30
1 " S end " 2-18-30

FISCAL YEAR	Job No	SHEET NO	TOTAL SHEETS
1929	7104	7	11
Part. Lvt. Sal. R. Br. Brac. Co. Dr. #7624			



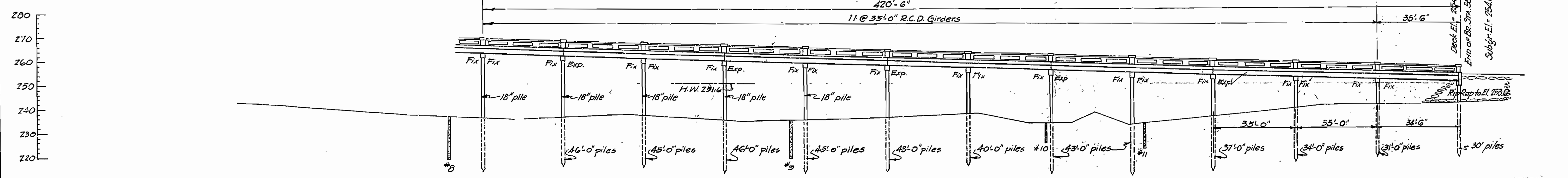
Quantities

PLAN



B.M. #40 Elev. 244.46 nail in Roof
 19" B. Gum 105' Lt. Sta. 584+50.

Bridge Contractor to Const.
 Embankment around Bridge
 ends.



ELEVATION

Lengths of piling shown are assumed for
 Estimating Quantities only. Actual lengths of
 piling to be determined in the field.

See Drwg. No 1019 for Details R.C.D. Girder
 " " " 1029 " Handrail Details

Revised 3/5/29 C.A.R.
 Checked by E.M.G. Date 5/13/29
 A Spans added. D. End. E.M.G. 5/13/29
 L. S. E.M.G. 5/13/29

Test Hole #9
 2' Lt. Sta. 580+21
 Gr. El. 237.2
 Sandy clay 3.0'
 Sand 15.3'

Fix = Fixed
 Exp = Expansion

Test Hole #8
 17' Lt. Sta. 581+70
 Gr. El. 235.8
 Sand 12.0'
 Gravel 4.0'

Test Hole #10
 9' Rt. Sta. 582+79
 Gr. El. 234.5
 Gumbo y clay 6.0'
 Sand 2.0'

Test Hole #11
 15' Rt. Sta. 583+21
 Gr. El. 235.0
 Sandy clay 3.0'
 Sand 7.4'

**PART LAYOUT
 BRIDGE OVER SALINE RIVER
 PANSY SO. ROAD
 BRADLEY COUNTY
 ROUTE 15 SEC. 4**

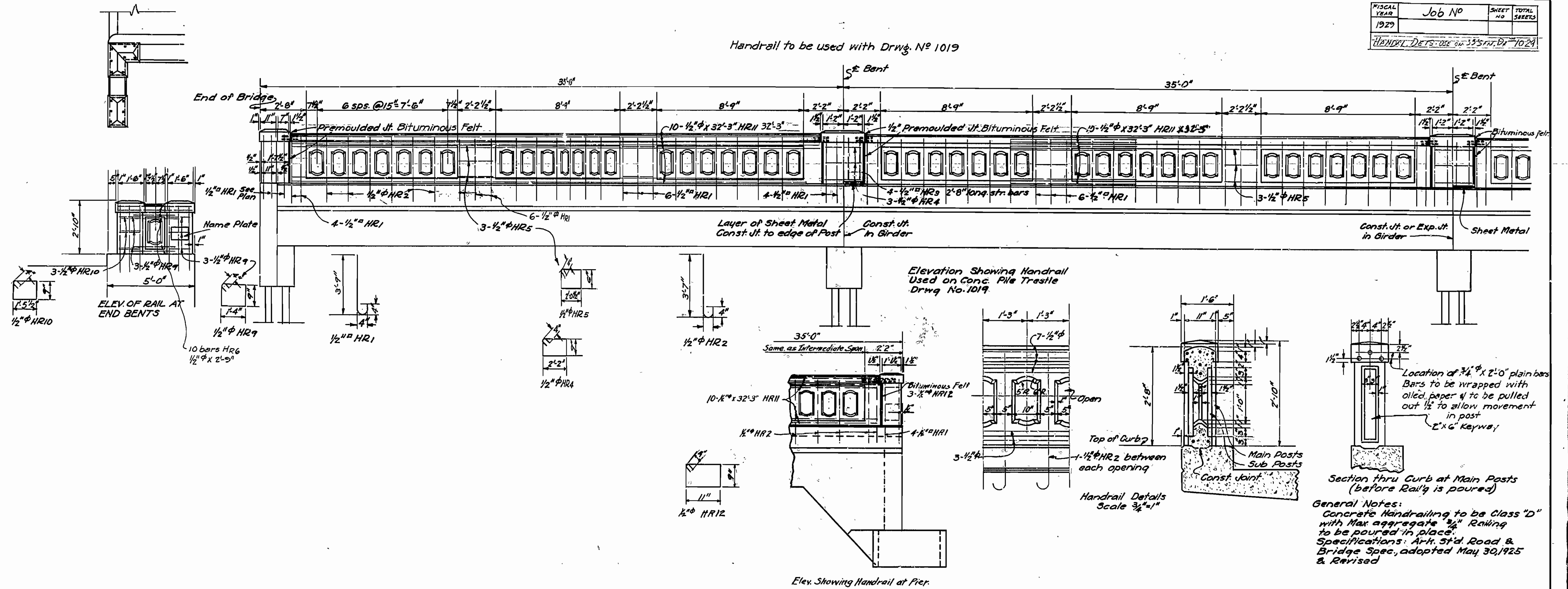
**ARKANSAS STATE HIGHWAY DEPARTMENT
 LITTLE ROCK, ARK.**

Drawn By: F.P.B. Date: 5/11/29
 Traced By: F.M.G. Date: 5/13/29
 Checked By: C.A.R. Date: 5/17/29
 BRIDGE NO 569 SCALE: 1" = 20' ft
 DRAWING NO 1624

M.A. Sanner
 BRIDGE ENGINEER

FISCAL YEAR	Job No	SHEET NO	TOTAL SHEETS
1929			
HANDRAIL DETAILS FOR 35'-0" R.C.D.G. SPAN			

Handrail to be used with Drawg. No 1019



General Notes:
 Concrete Handrailing to be Class "D" with Max aggregate 3/4" Railing to be poured in place.
 Specifications: Ark. Std. Road & Bridge Spec, adopted May 30, 1925 & Revised

