

STATE OF ARKANSAS  
STATE HIGHWAY DEPARTMENT

FISCAL YEAR	JOB NO.	SHEET NO.	TOTAL SHEETS
1928	1096	1	7

*Clay Co. Route 1 Sec. 21*

PLAN OF PROPOSED BRIDGE  
CORNING - PIGGOTT ROAD

CLAY CO.

ROUTE 1 SEC. 21

JOB NO 1096

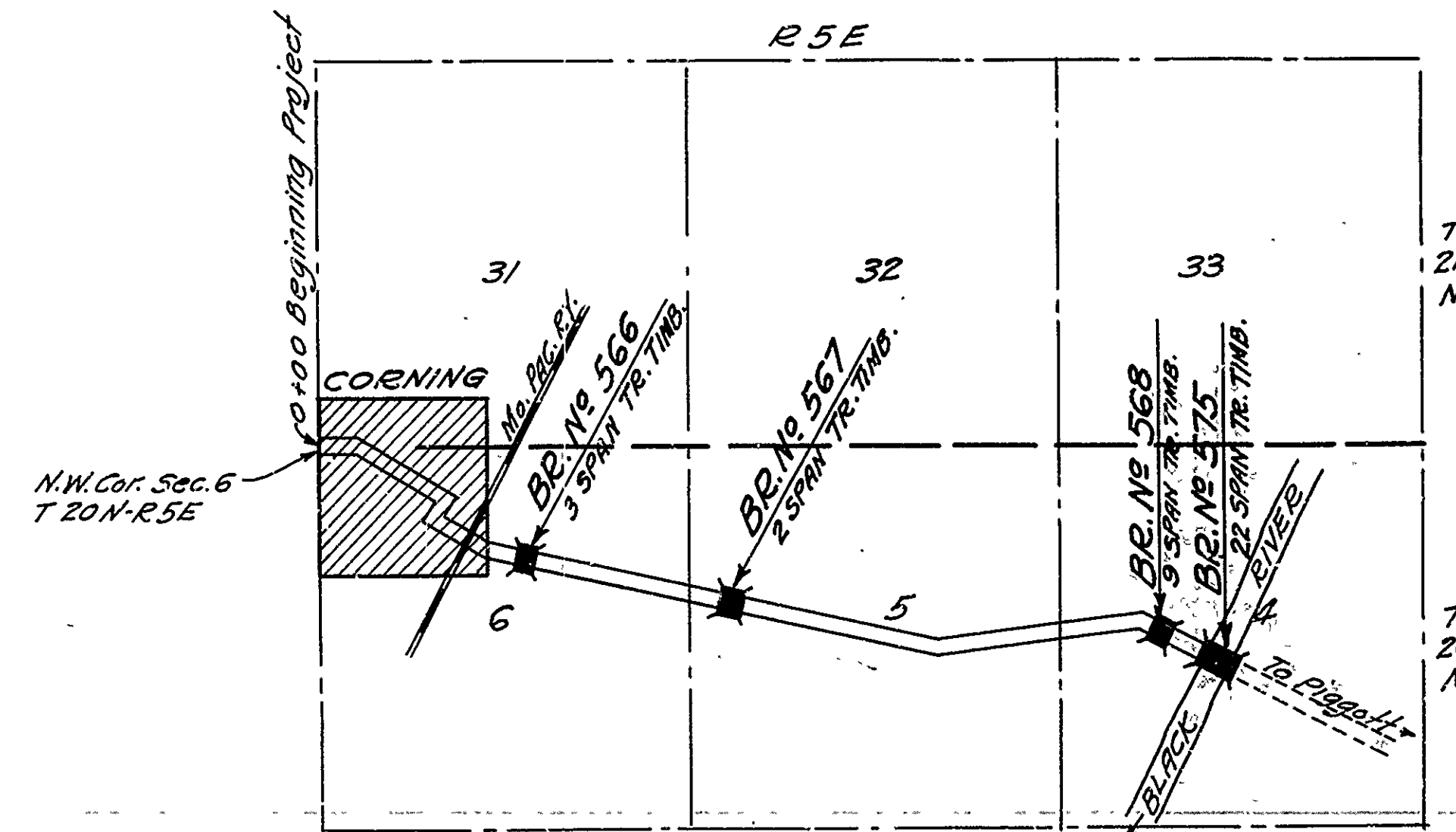
FEDERAL AID PROJECT No.

INDEX OF SHEETS

- Draw. No. 612 Sheet No. 1 Title
- " 613 " No. 2 Layout of Br. 566 and 567
  - " 614 " No. 3 Layout of Br. 568 (Skew)
  - " 615 " No. 4 Layout of Br. 575 (Red River)
  - " 616 " No. 5 Details of Br. 575
  - " 9 " No. 6 Stand. 15'-0" Span 19'-0" Rwy. Treated Timb.
  - " 10 " No. 7 " 19'-0" " " " "

QUANTITIES

- S. P. - Repair of Steel Spans Lump Sum  
 No. 52 - Untreated Bridge Timber 4,848 M-FBM  
 No. 52 - Treated Bridge Timber 162,615 M-FBM  
 No. 67 - Treated Timber Piling 5712 Lin. Ft.



LAYOUT

Scale:

GROSS LENGTH OF PROJECT 973 Ft. 4 in = 0.184 Miles  
NET LENGTH OF PROJECT 973 Ft. 4 in = 0.184 Miles

APPROVED \_\_\_\_\_  
 COMMISSIONER - STATE LANDS, HIGHWAYS AND IMPROVEMENTS

APPROVED \_\_\_\_\_  
 STATE HIGHWAY ENGINEER

RECOMMENDED FOR APPROVAL \_\_\_\_\_  
 DISTRICT ENGINEER - U. S. BUREAU OF PUBLIC ROADS

RECOMMENDED FOR APPROVAL \_\_\_\_\_  
 CHIEF ENGINEER - U. S. BUREAU OF PUBLIC ROADS

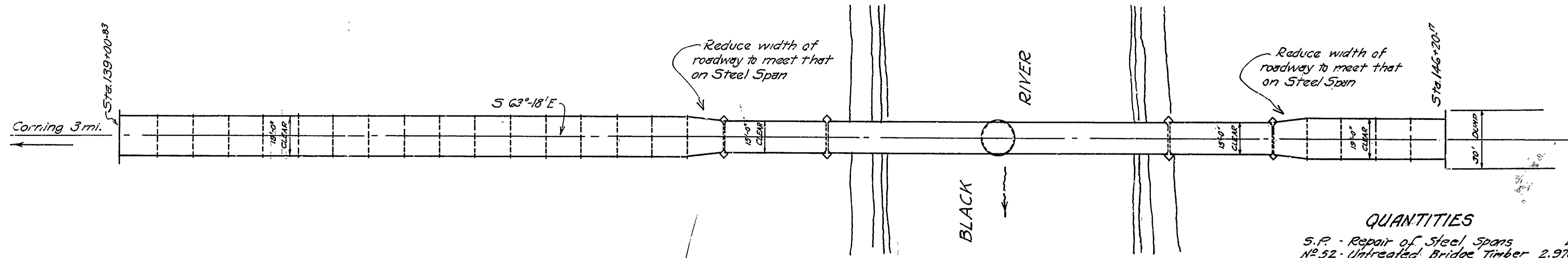
APPROVED \_\_\_\_\_  
 DIRECTOR - U. S. BUREAU OF PUBLIC ROADS

*R. B. Hoover*  
BRIDGE ENGINEER

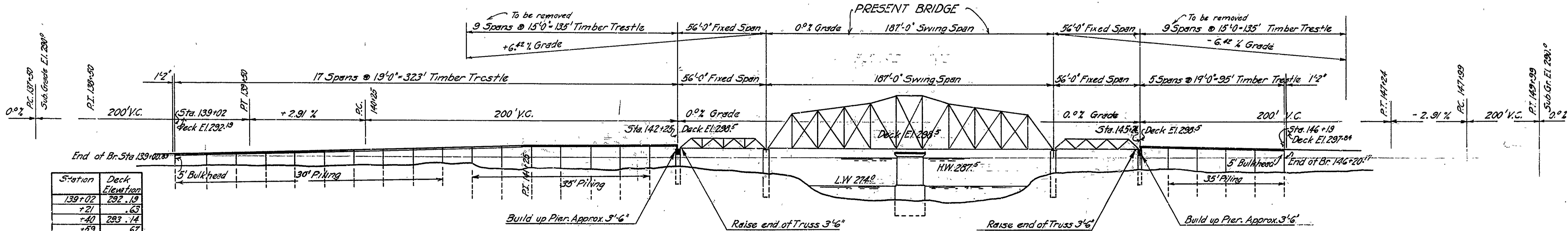
BRIDGE No.

DRAWING No. 612

FISCAL YEAR	SHEET NO.	TOTAL SHEETS
1928	4	7
JOB 1096		
LAYOUT BRIDGE OVER CANYON CR. 615		



**QUANTITIES**  
 S.P. - Repair of Steel Spans Lump Sum  
 No. 52 - Untreated Bridge Timber 2,976 M.F.B.M.  
 No. 52 - Treated Bridge Timber 105,608 M.F.B.M.  
 No. 67 - Treated Timber Piling 3010 Lin. Ft.



Station	Deck Elevation
139+02	292.19
+21	.63
+40	293.14
+59	.67
+78	294.22
+97	.76
140+16	295.33
+35	.87
+54	296.38
+73	.92
+92	297.21
141+11	.96
+30	.85
+49	298.08
+68	.26
+87	.39
142+06	.46
+25	.50
145+24	298.50
+43	.47
+62	.40
+81	.27
146+00	.08
+19	297.84

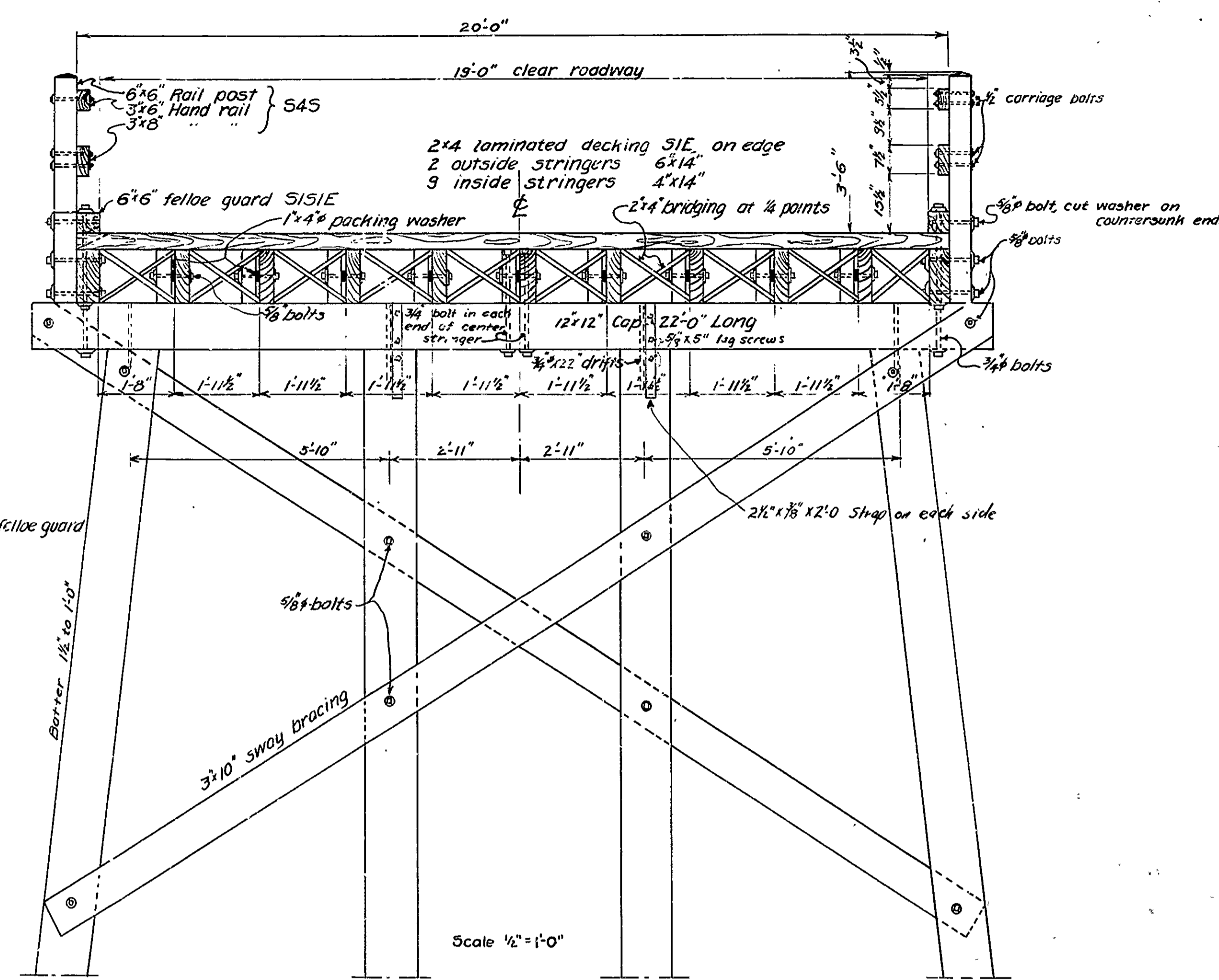
**NOTE**  
 Soundings shows a 4' overburden of white sand with quick sand below.  
 B.M. El. 284.63  
 Nail in root of 40' Elm about 60' Rt. of Sta 140+60  
 D.A. 1900 sq. mi.

**ELEVATION**  
 Scale: 1"=30'  
 Piling lengths are assumed for estimating quantities only. Actual lengths are to be determined in the field.  
 For Details see Drawings No 10 & No 616

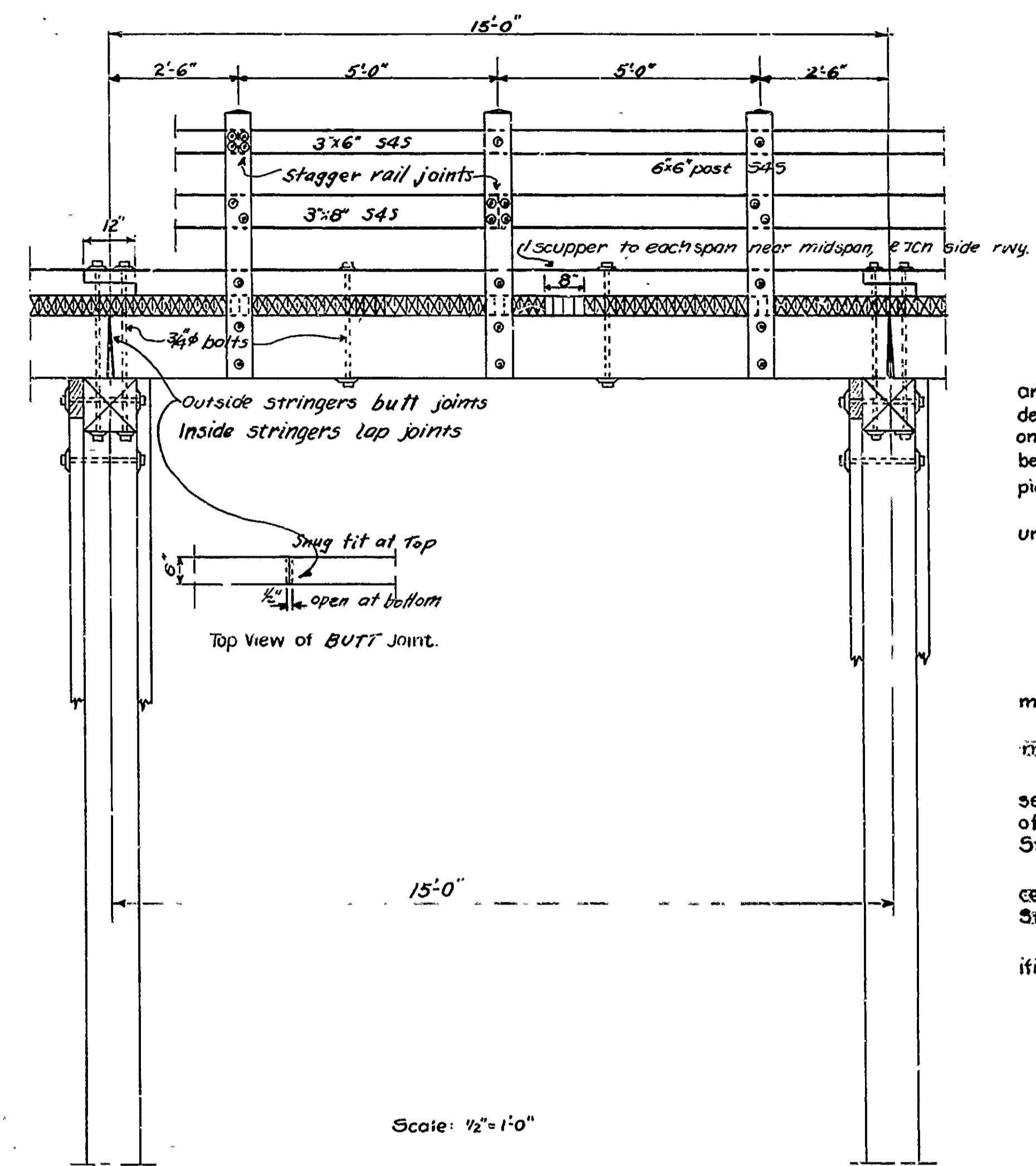
LAYOUT  
**BLACK RIVER BRIDGE**  
 CLAY COUNTY  
 ROUTE 1 SEC. 21  
**ARKANSAS STATE HIGHWAY DEPARTMENT**  
 LITTLE ROCK, ARK.  
 Drawn By CAD Date: 12/21  
 Traced By Date: "  
 Checked By Date: "  
 Scale: 1/2"=30 ft.  
**BRIDGE No. 575** **DRAWING No. 615**

FED. ROAD DIST. NO.	STATE	FED. AID PROJ. NO.	FISCAL YEAR	SHEET NO.	TOTAL SHEETS
6	ARK.				

15' ST. TIM TRESTLE, Rdwy., DWG. No. 9



CROSS SECTION ROADWAY



ELEVATION

**NOTES.**

Each stringer to be spiked to caps with 4-40d spikes and to be sized at bearing points in field. 2x4 laminated decking S1E. Each piece to be nailed to each adjacent piece once between each stringer with 30d spike. Each piece to be nailed to alternate stringers with 30d spike. Alternate pieces to be nailed to alternate stringers.

Random length pieces of 2x4 decking may be used under the following conditions:

1. Each joint to be made on stringers;
2. Each piece shall cover at least 3 stringers.
3. No more than one joint in an length (lamina)
4. Each joint to be followed by at least 3 full length pieces.

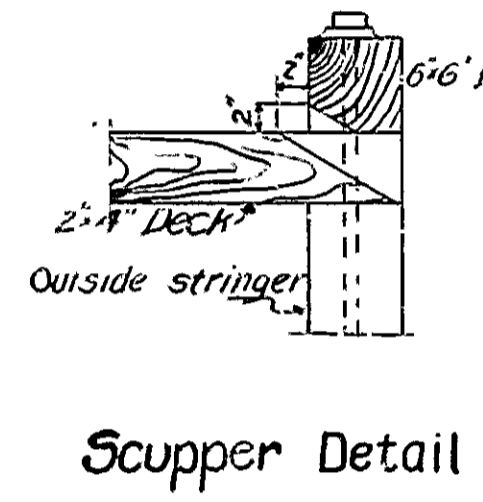
Use sway bracing on all bents 5'-0" or over in height. Use malleable or cast iron washers on both ends of machine bolts unless noted otherwise.

All timber and piling except 3x6 and 3x8 rail members to be treated.

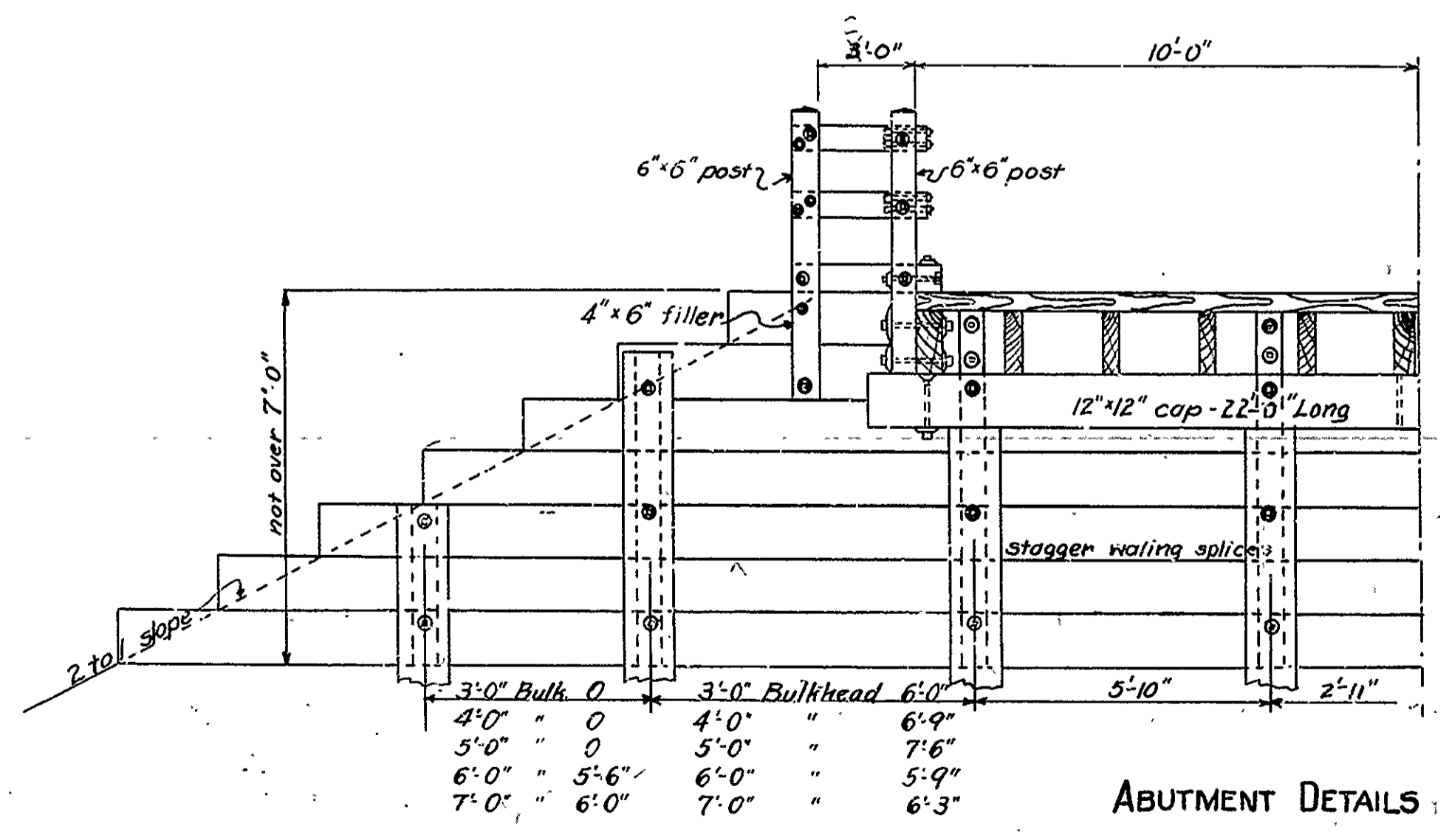
Rail members shall be made of untreated seasoned dressed lumber and shall be painted with 3 coats of paint in accordance with paragraph 52.3(a) of Ark. State Standard Specifications.

All treated timber and piling to be treated by empty cell process in accordance with paragraph 52.2(d) of Ark. State Standard Specifications.

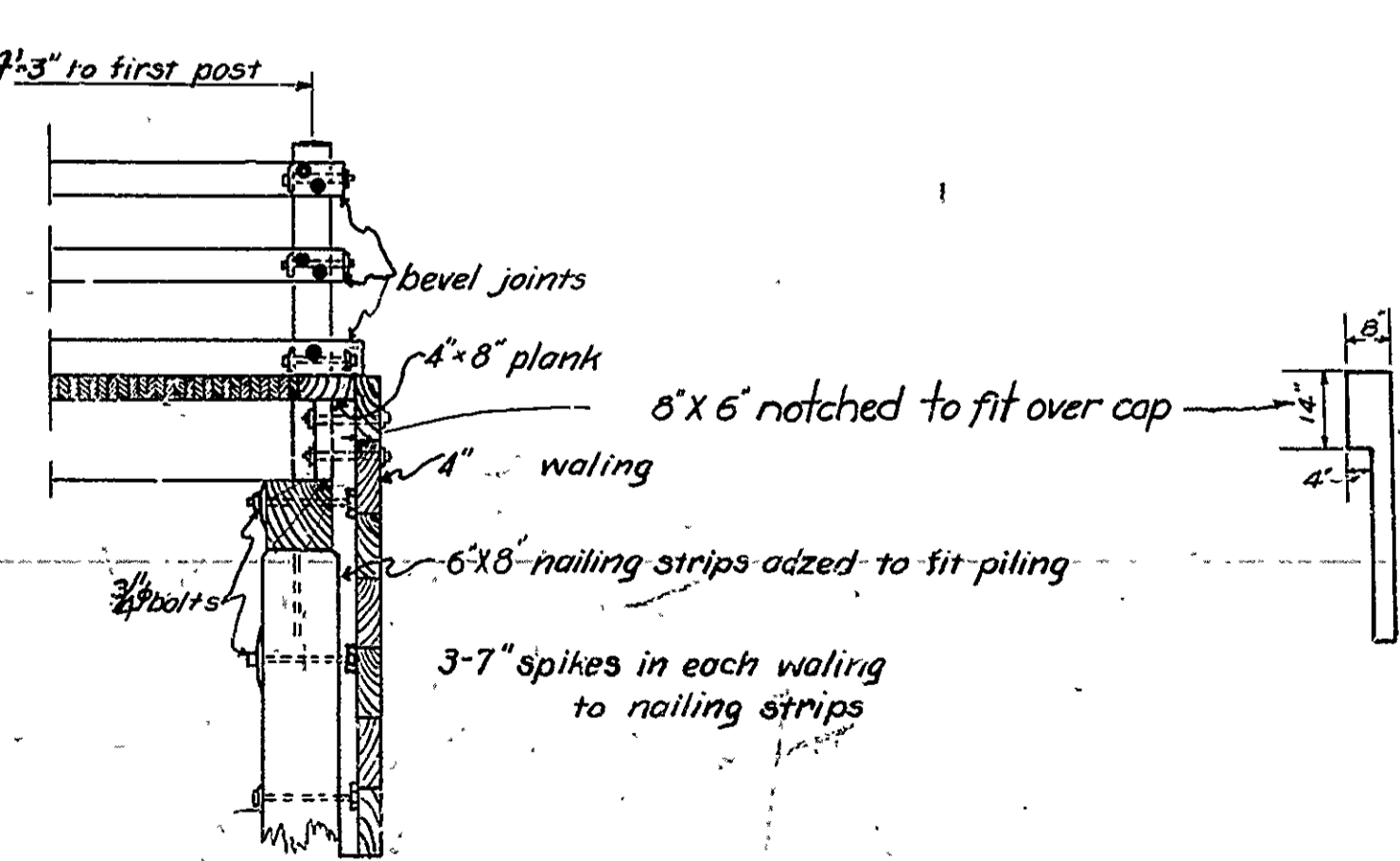
Specifications: Arkansas State Road and Bridge Specifications adopted May 30, 1925.



Scupper Detail



ABUTMENT DETAILS



**NOTE:**  
MEASUREMENT FOR PAYMENT OF THE 2" X 4" LAMINATED DECKING SHALL BE COMPUTED AT 80(EIGHTY) FT. B.M. PER LIN. FT. OF BRIDGE. ENDS OF DECKING TO BE FLUSH.

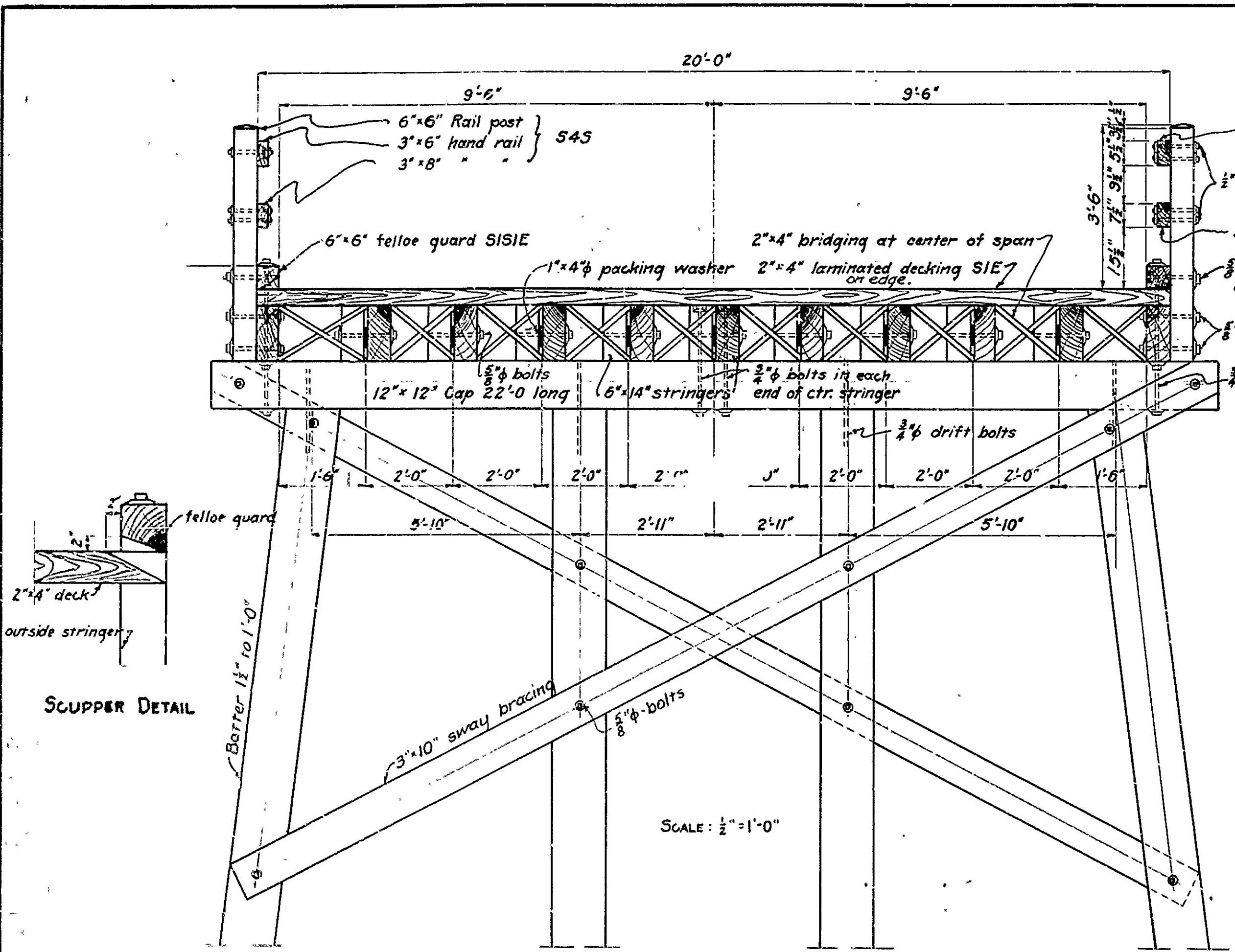
DETAILS OF  
15'-0" STANDARD TREATED TIMBER TRESTLE  
19'-0" CLEAR ROADWAY  
ARKANSAS STATE HIGHWAY DEPARTMENT  
Little Rock, Arkansas. July, 1927.

Revised	Handrail
3/9/27	M.W.K.
7/2/28	F.M.E. prof.
7-16-30	G.M. H.P.G.

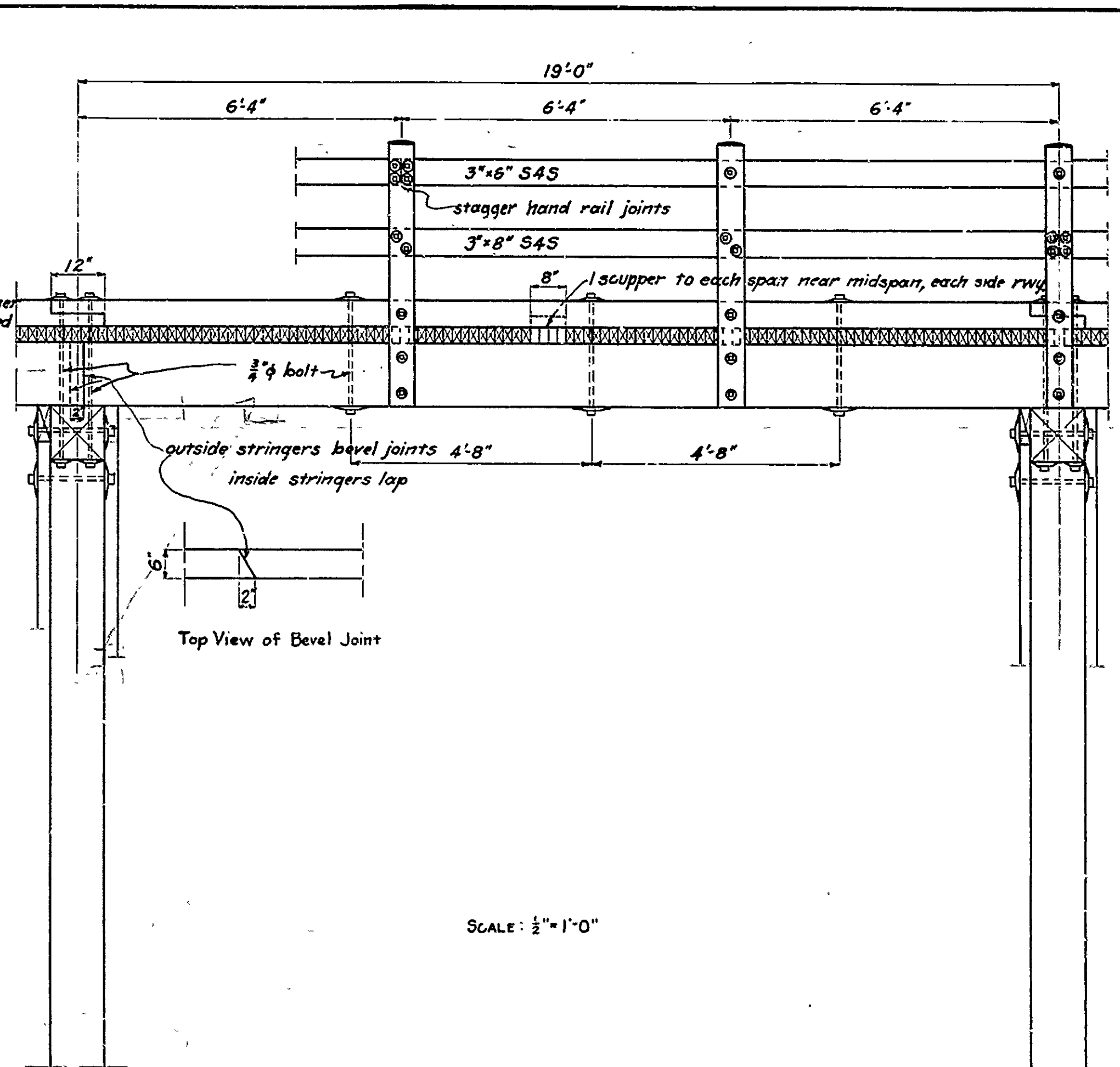
M.W.K.  
BRIDGE ENGINEER

FED. ROAD DIST. NO.	STATE	FED. AID PROJ. NO.	FISCAL YEAR	SHEET NO.	TOTAL SHEETS
6	ARK.				

19 Std. Trk. Fin Trk. 19' Clearway DR. 10



CROSS SECTION ROADWAY



ELEVATION

Each stringer to be spiked to caps with 4 - 40 d spikes and to be sized at bearing points in field. 2"x4" laminated decking SIE. Each piece to be nailed to each adjacent piece once between each stringer with 30d spike. Each piece to be nailed to alternate stringers with 20 d spike. Alternate pieces to be nailed to alternate stringers.

Random length pieces of 2"x4" decking may be used under the following conditions:

1. Each joint to be made on stringers.
2. Each piece shall cover at least 3 stringers.
3. No more than one joint in any length (lamina).
4. Each joint to be followed by at least 3 full length pieces.

Use sway bracing on all bents 5'-0" or over in height.

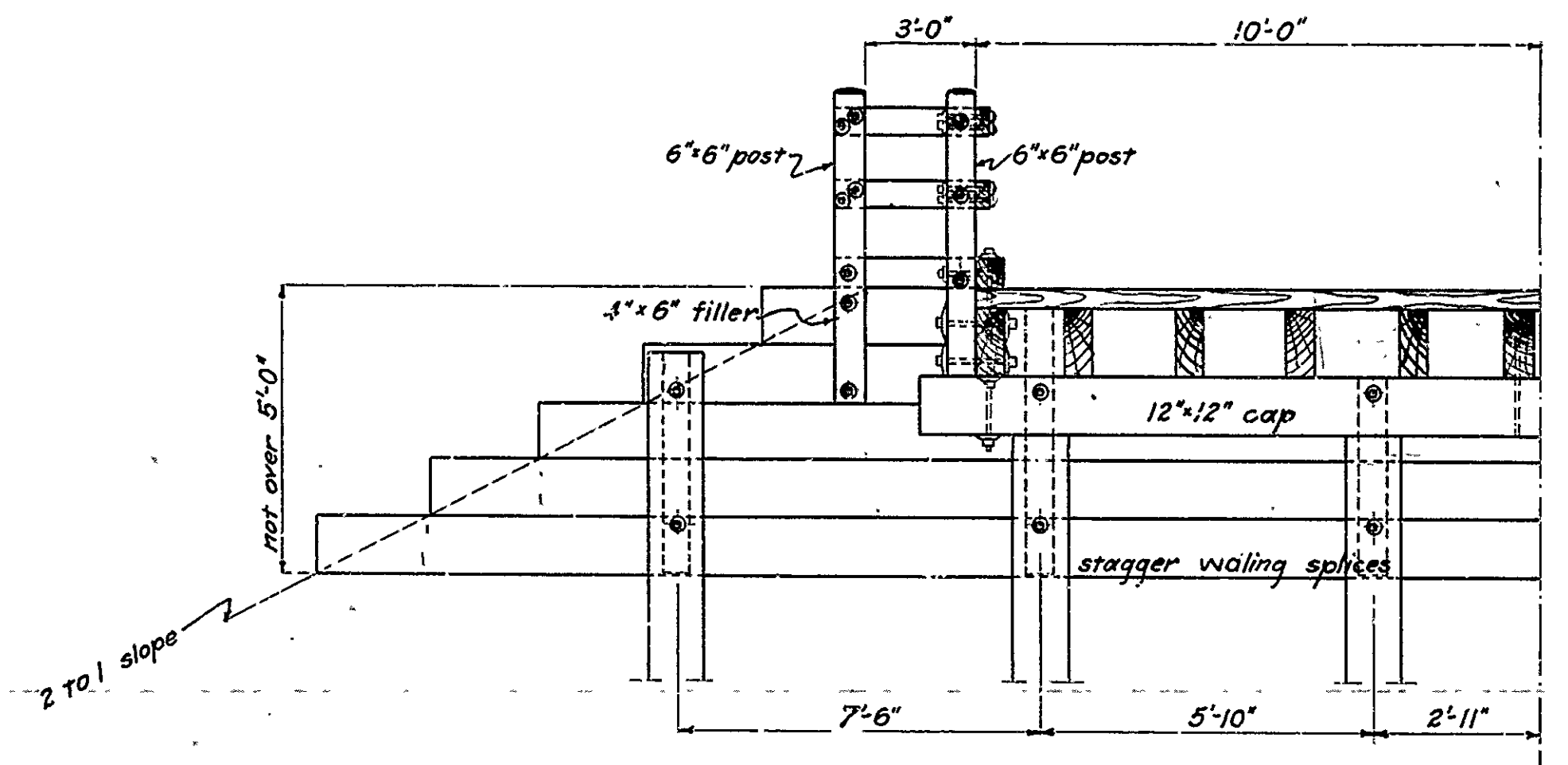
Use malleable or cast iron washers on both ends of machine bolts unless noted otherwise.

All timber and piling except 3"x6" and 3"x6" rail members to be treated.

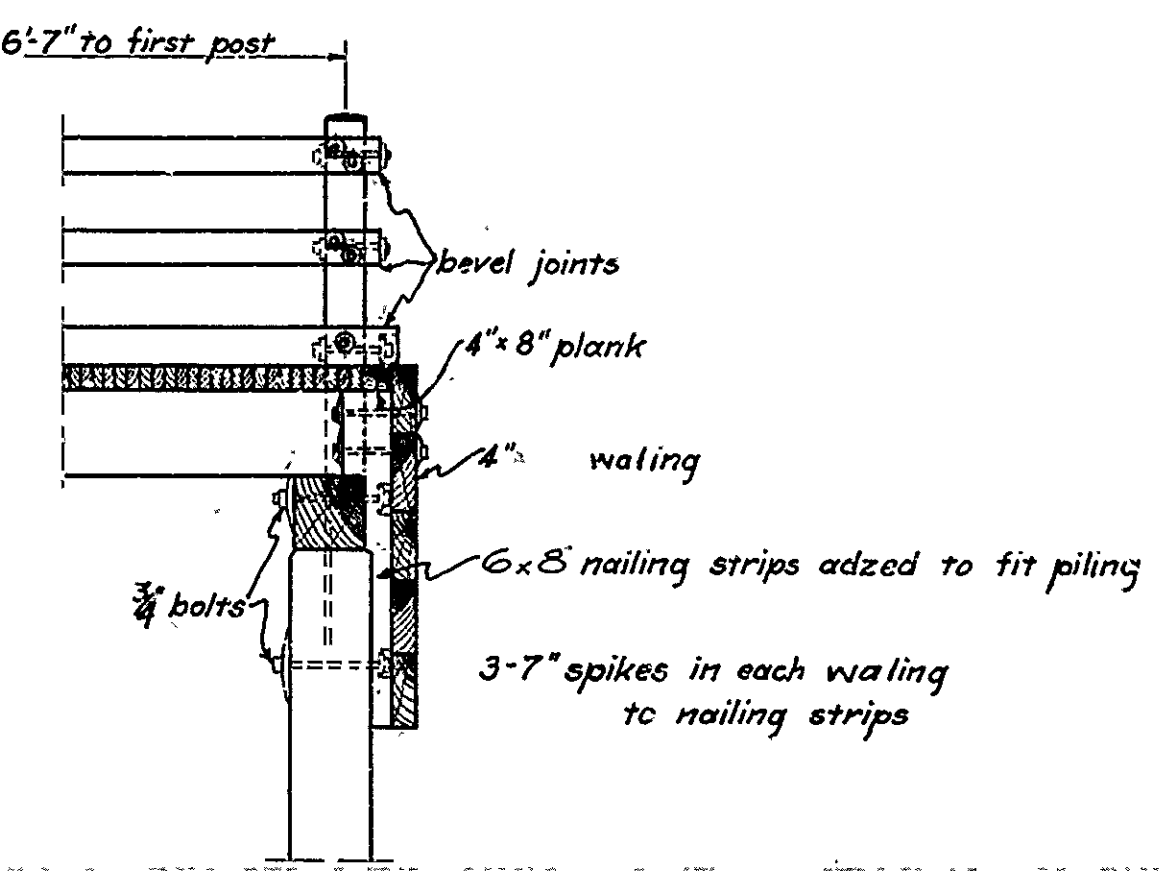
Handrail shall be made of untreated seasoned, dressed lumber, and shall be painted with 3 coats of paint in accordance with paragraph 52.3(a) of Ark. State Standard Specifications.

All treated timber and piling to be treated by empty cell process in accordance with paragraph 52.2(d) of Ark. State Standard Specifications.

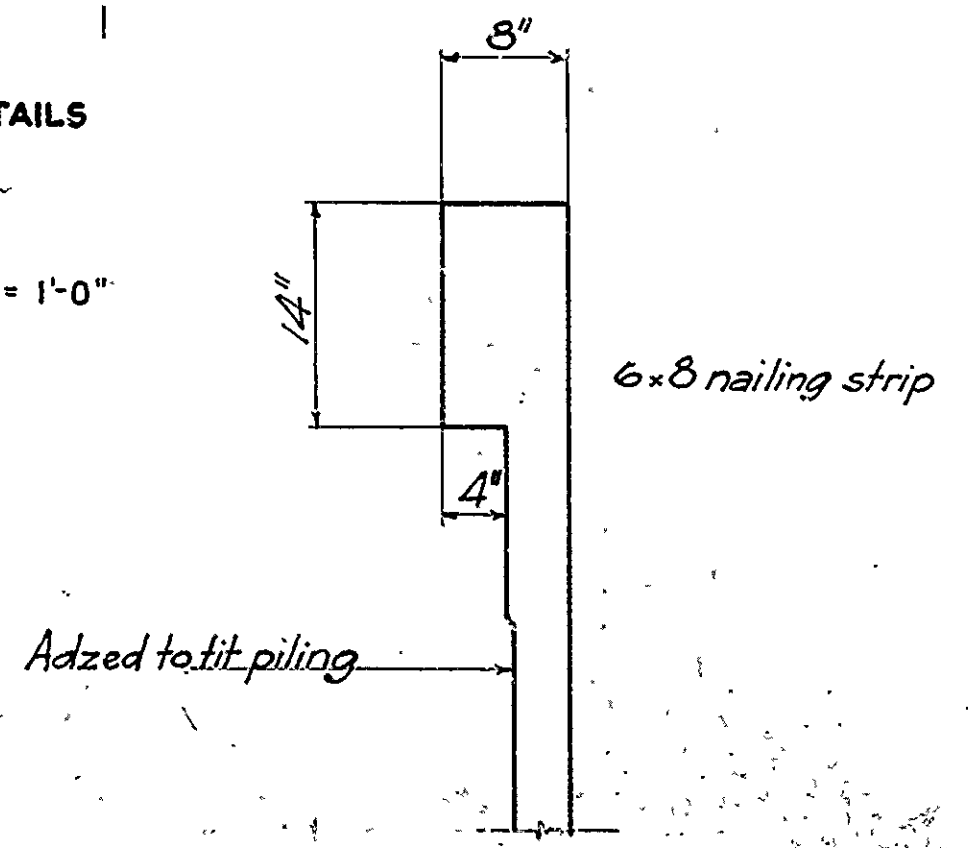
Specifications: Arkansas State Road and Bridge Specifications adopted May 30, 1925.



ABUTMENT DETAILS



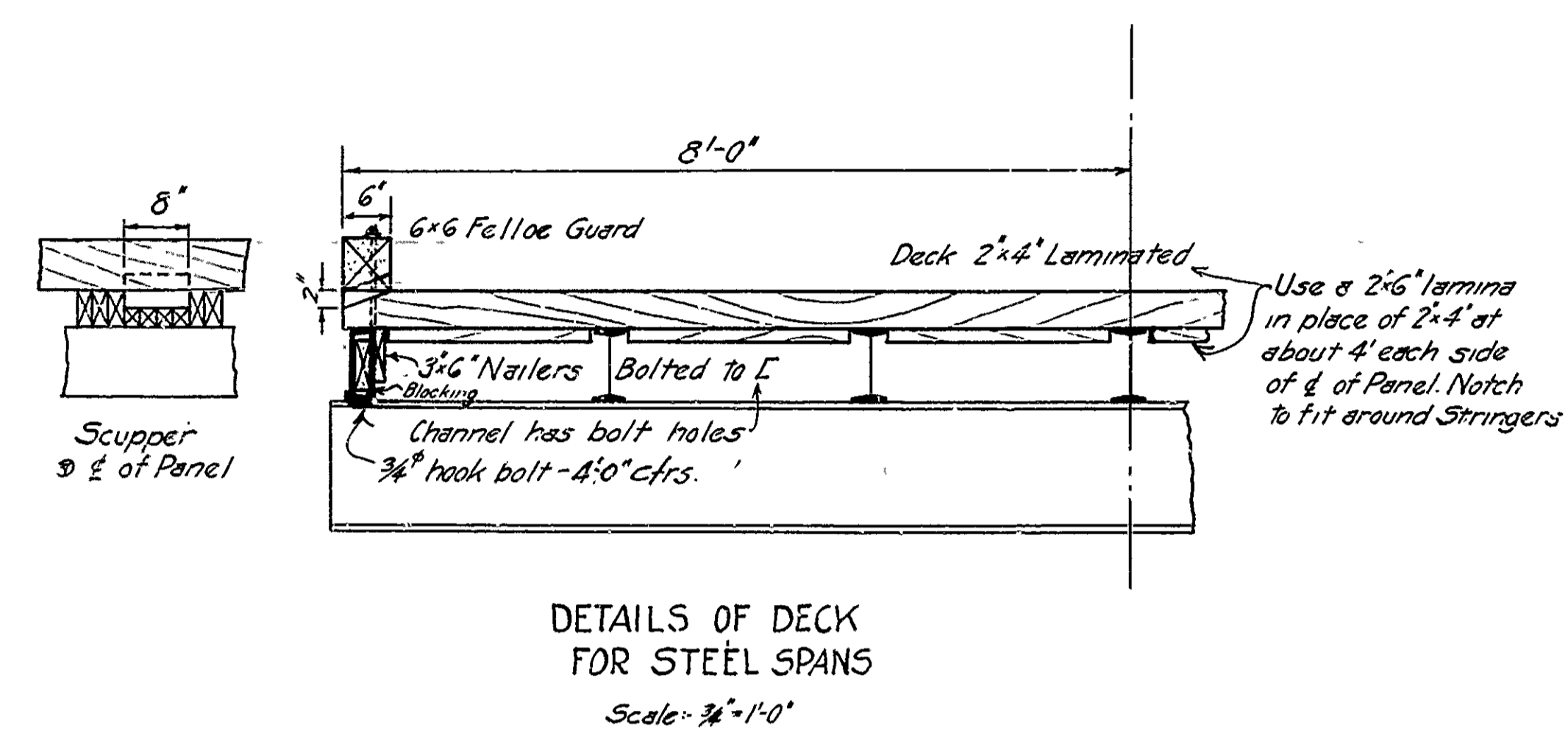
NOTE: MEASUREMENT FOR PAYMENT OF THE 2"x4" LAMINATED DECKING SHALL BE COMPUTED AT 80(EIGHTY) FT.B.M. PER LIN. FT. OF BRIDGE. ENDS OF DECKING TO BE FLUSH.



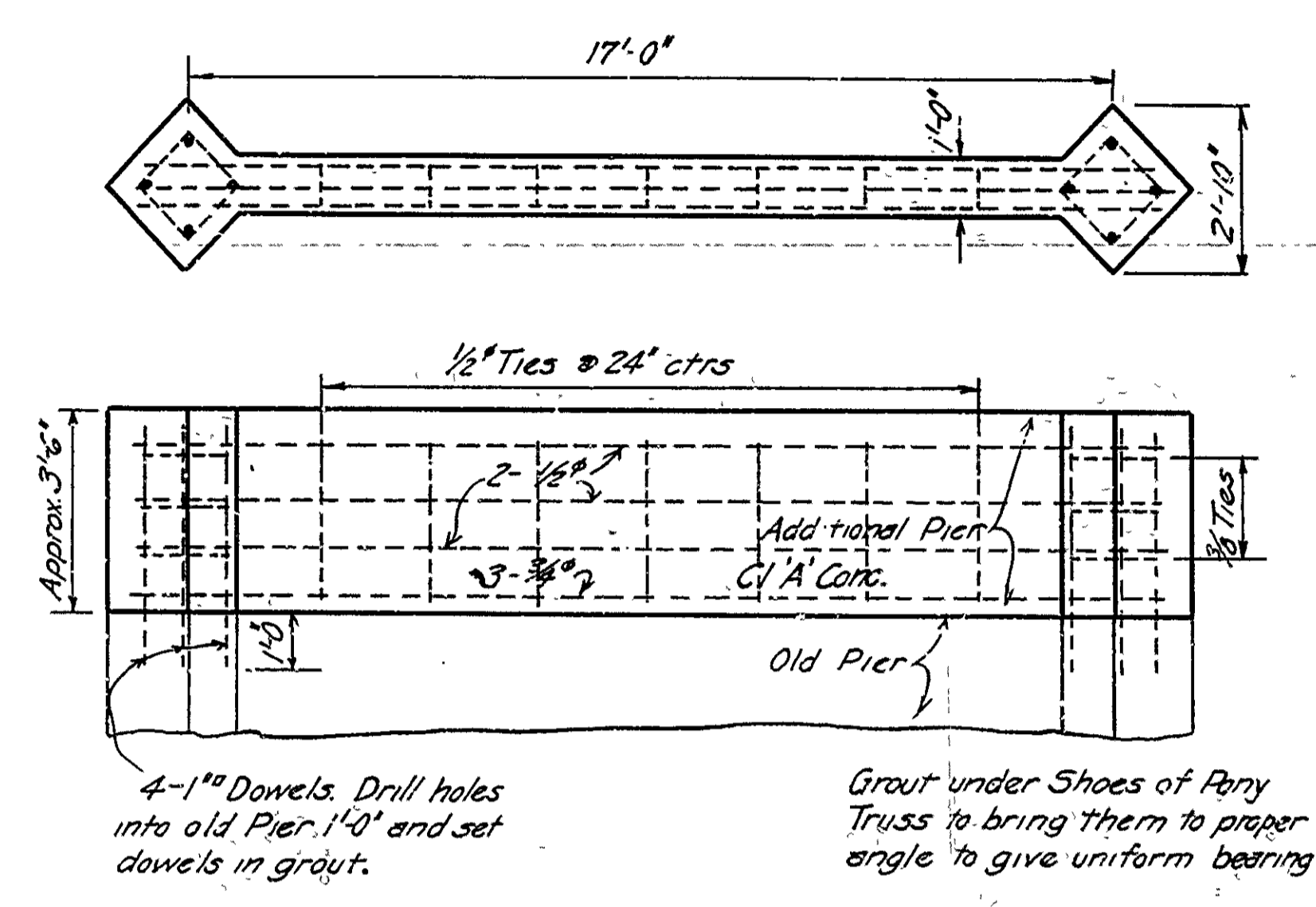
DETAILS OF  
19'-0" STANDARD TREATED TIMBER TRESTLE  
19'-0" CLEAR ROADWAY  
ARKANSAS STATE HIGHWAY DEPARTMENT  
Little Rock, Arkansas July, 1927

Revised 9/12/21 R.C.H. - Roadway  
4/25/20 R.C.H. - NOTE

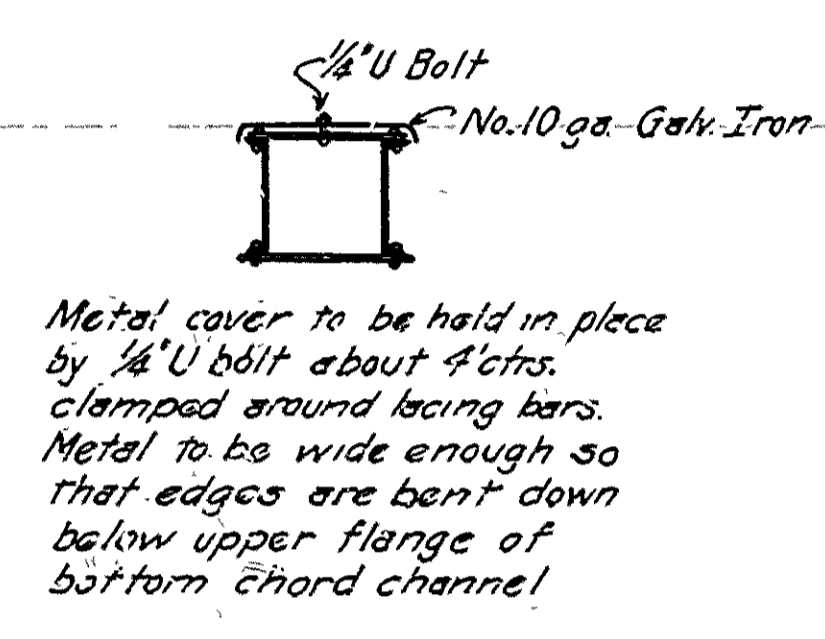
FISCAL YEAR		SHEET No.	TOTAL SHEETS
1928	JOB 1096	5	7
DESIG. BLACK R. BR. CLAY CO. DR. # 616			



DETAILS OF DECK FOR STEEL SPANS  
Scale: 3/4"=1'-0"



DETAILS OF ADDITION TO END PIERS



DETAILS METAL COVER FOR FIVE CENTER PANELS OF THE LOWER CHORD SWING SPAN

NOTE

All timber for deck shall be treated as per art 522 of Ark. Standard Specifications adopted May 30, 1925.  
Each lamma in deck nailed to adjacent one once between each pair stringers with 30d nail. Nail each lamma to nailer with 20d

SUMMARY

Bridge No 575 includes the following  
+ Bid on Lump Sum basis    ° Unit Quantity basis

REPAIRS  
Item No. S.P.

- + Cover lower Chord Swing Span (See Detail)
  - + Raise end of each Fixed span
  - + Build end piers approximately 3'-6" higher 'Class A Conc'
  - + Clean Structural Steel in Spans and apply two coats paint
  - + Clean and grease machinery.
  - + See that span will properly operate.
  - + Remove two Sections 135' each, timber trestle.
  - + Remove deck on Steel Spans.
  - + Repair one Pier column, 'Class A Conc' Approx. 1/2 cu. yd.
- See Table of Quantities
- ° Build 418' Treated Timber Trestle Approach
  - ° Re-deck Steel Spans with Treated Timber

DETAILS  
BLACK RIVER BRIDGE  
CLAY COUNTY  
ROUTE 1 SEC. 21  
ARKANSAS STATE HIGHWAY DEPARTMENT  
LITTLE ROCK, ARK.

Drawn By: C.A.D. Date: 1/2/28  
Traced By: \_\_\_\_\_ Date: \_\_\_\_\_  
Checked By: \_\_\_\_\_ Date: \_\_\_\_\_  
Scale: in. = ft.  
BRIDGE NO. 575 DRAWING NO. 616

M.B. Harris  
BRIDGE ENGINEER