

FED. ROAD DIST. NO.	STATE	FED. AID PROJ. NO.	FISCAL YEAR	SHEET NO.	TOTAL SHEETS
8	ARK.	286-A		1	19

Prop. By: HAZARD MILL CREEK & BUFFALO R. DIST. 511

STATE OF ARKANSAS
STATE HIGHWAY DEPARTMENT

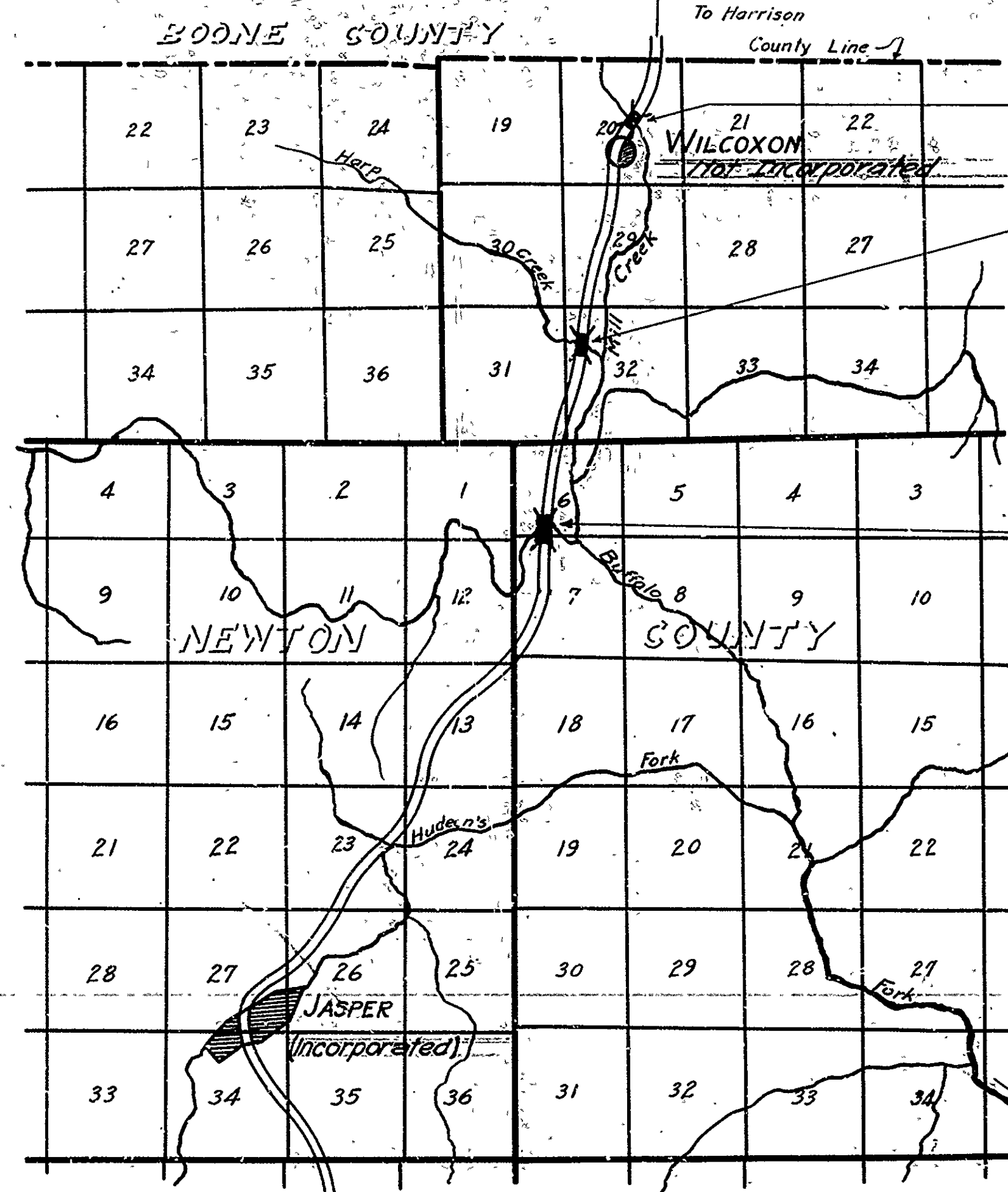
PLAN OF PROPOSED BRIDGES
OVER

HARP AND MILL CREEKS & BUFFALO RIVER
JASPER-HARRISON ROAD
ROUTE 7 - SEC 13
NEWTON COUNTY
JOB - 904 & 9126

INDEX OF SHEETS

SHEET No.	DRAWING No.	TITLE OF SHEETS
1	511	TITLE SHEET
2	512	LAYOUT-BRIDGE No 585
3	513	DETAIL CONC. ARCH AND APPROACH SPANS BR. No. 585
4	514	DETAILS END BENTS BR. No. 585.
5	515	LAYOUT-BRIDGE No 586
6	516	DETAILS OF SPANS BR. No. 586.
7	517	DETAILS OF SPANS BR. No. 586
8	518	DETAILS OF ABUTMENTS BR. No. 586
9	513-A	REVISED DECK OF ARCH SPAN BR. No. 585
10	518-A	REVISED PLAN ABUTMENT No. 1 - BR. No. 586
11	3218	LAYOUT-BRIDGE No. 1689
12	3219	DETAILS ABT No. 1 & PIER No. 1 - Br. No. 1689
13	3220	DETAILS PIERS 2 & 3 - Br. No. 1689
14	3221	DETAILS OF ABUTMENT No. 2 - Br. No. 1689.
15	3222	TRUSS DETAILS - Br. No. 1689
16	3223	TRUSS DETAILS - Br. No. 1689
17	3224	TRUSS DETAILS - Br. No. 1689
18	2279	STANDARD 50' R.C.G.-20' ROADWAY
19	3225	PLAN & PROFILE - BR. No. 1689

EMERGENCY FINANCIAL F.A.P. No. 286-A



Begin of Br. Sta. 5+68.5
BRIDGE No. 586 - Job 904
End of Br. Sta. 6+68.0

Begin of Br. Sta. 5+58.87
BRIDGE No. 585 - Job 904
End of Br. Sta. 6+76.13

End of Br. Sta. 14+93.35
BR. No. 1689 - Job 9126
Begin of Br. Sta. 8+68.75

QUANTITIES

PARTICIPATING IN E.F.F.A.P. No. 286-A		
Item No.	ITEM	Amount
13	Dry Excavation for Strs.	250.28 Cu yds
13	Wet Excavation for Strs.	446.12 "
5.P	Solid Rock Exc. for Strs.	24944 "
54	Class "A" Concrete	101,250 "
54	Class "S" Concrete	479.40 "
55	Reinforcing Steel	194,698.0 #
56	Structural Steel	319746 #
69	Rip Rap 1' Thick	102. Cu yds
74	Concrete Railing	619.67 Lin Ft.

NON-PARTICIPATING IN E.F.F.A.P. No. 286-A		
Item No.	Item	Amount
11	Clearing	4.11 Acres
11	Grubbing	1.94 "
5.P&12	Common Excavation	15870. Cu yds
5.P&12	Solid Rock Excavation	5868. "
5.P	Removal of Existing Str.	1. only
19	Overhaul	7416. Sta Yds.

JOB 904

Specifications approved by Chief, Bureau of Public Roads, September 28, 1925, and adopted by State Highway Commission May 30, 1925, with revisions and Special Provisions as follows:

Pamphlet A	Revised	Approved
B		
C		
D	July 1, 1928	Nov. 24, 1928
E		
F		
G		
H		
I		
J		
K		
L	Dec. 1, 1927	

SPECIAL PROVISIONS

Solid Rock Excavation for Structures	1	Sheet
		Sheet
		Sheet
		Sheet

JOB 9126
Specifications approved by Chief, Bureau of Public Roads, September 28, 1925, and adopted by State Highway Commission May 30, 1925, with revisions and Special Provisions as follows:

Pamphlet A	Revised	Approved
B	Sept. 1, 1928	June 1, 1929
C		
D	July 1, 1928	Nov. 24, 1928
E		
F		
G		
H		
I		
J	Jan. 1, 1929	Jan. 1, 1929
K		
L	Jan. 1, 1929	Jan. 1, 1929

SPECIAL PROVISIONS

Roadway Excavation	1	Sheet
Cost Methods & Measurement Emb. Meth.	1	Sheet
Stamp Hole Measurement	1	Sheet
Coarse Aggregate	2	Sheet
Rip Rap	1	Sheet
Engineers Field Office	1	Sheet
Alumina Paint	1	Sheet
Prosecution of Work	1	Sheet
Structural Steel	1	Sheet
Furnishing Materials	1	Sheet
Removal of Existing Structures	1	Sheet

LAYOUT

Scale: 1" = 1 Mi.

GROSS LENGTH OF PROJECT = 586.15 FT. = 0.111 Miles.
NET LENGTH OF PROJECT = 586.15 FT. = 0.111 Miles.

Revised 5-14-32 Br. #1689-66 2165 51112 W.B.

N. B. Harver
BRIDGE ENGINEER

APPROVED
COMMISSIONER, STATE LAKE, HIGHWAYS AND IMPROVEMENTS

APPROVED
STATE HIGHWAY ENGINEER

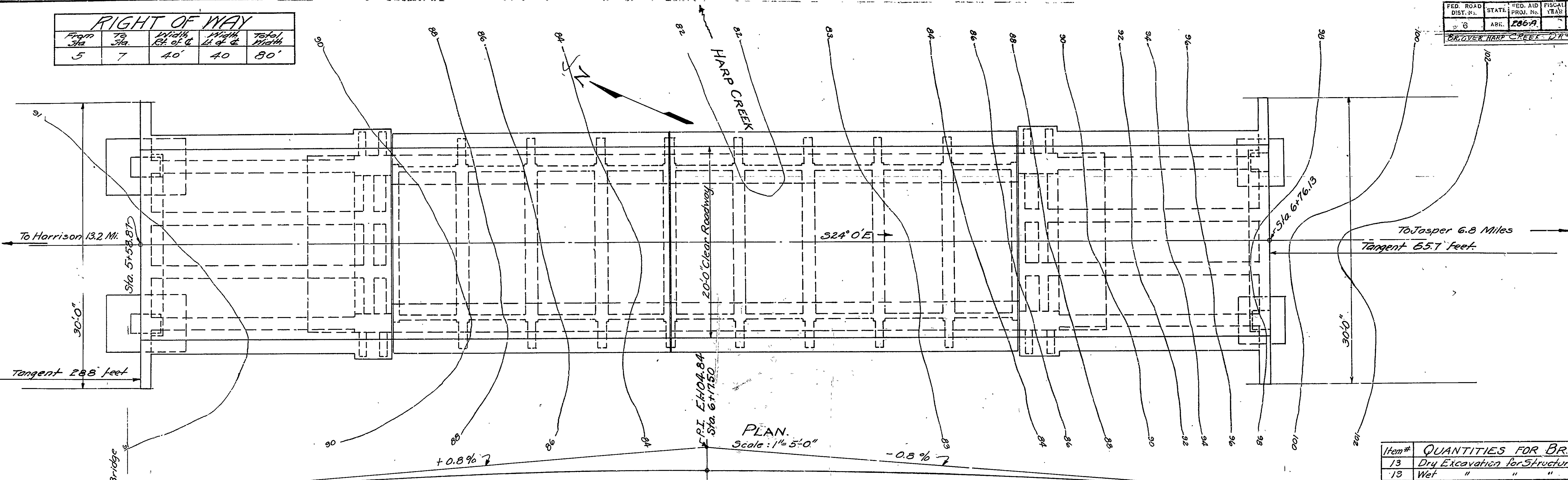
RECOMMENDED FOR APPROVAL
DISTRICT ENGINEER - 4. BUREAU OF PUBLIC ROADS

RECOMMENDED FOR APPROVAL
CHIEF ENGINEER - 4. BUREAU OF PUBLIC ROADS

APPROVED
DIRECTOR - 4. BUREAU OF PUBLIC ROADS

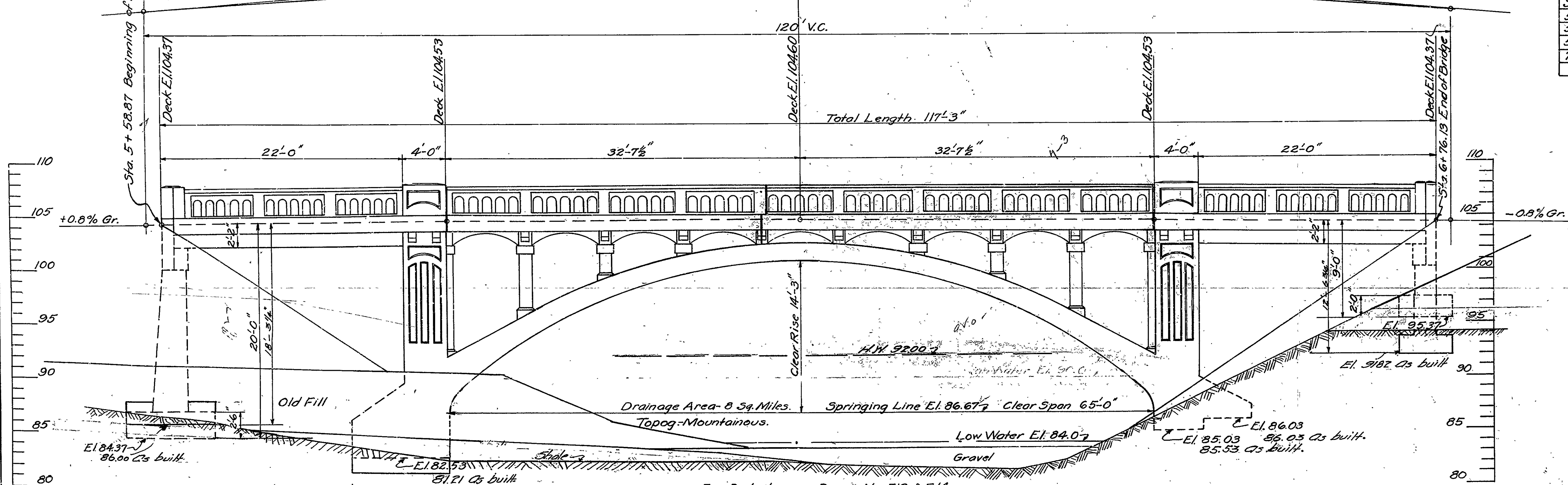
FED. ROAD DIST. NO.	STATE	FED. AID PROJ. NO.	FISCAL YEAR	SHEET No.	TOTAL SHEETS
6	ARK.	106-A	21	2	19

RIGHT OF WAY				
From Sta.	To Sta.	Width ft. of G.	Width ft. of C.	Total Width
5	7	40	40	80'



PLAN.
Scale: 1" = 5'-0"

Item#	QUANTITIES FOR BR# 585
13	Dry Excavation for Structures 1878 c.y.
13	Wet " " " " 712 c.y.
S.P.	Solid Rock " " " " 332 c.y.
54	Class-A-Concrete 165.16 c.y.
54	" -5- " " 112.50 c.y.
55	Reinf. Steel 40,481 LBS.
74	Conc. Railing for Structures 248 Lmt. Ft.



For Details see Drwg. No. 513 & 514

- ELEVATION -
Scale 1" = 5'-0"

Revised 5-14-37 - Quantities
Including elevations on Rock face with

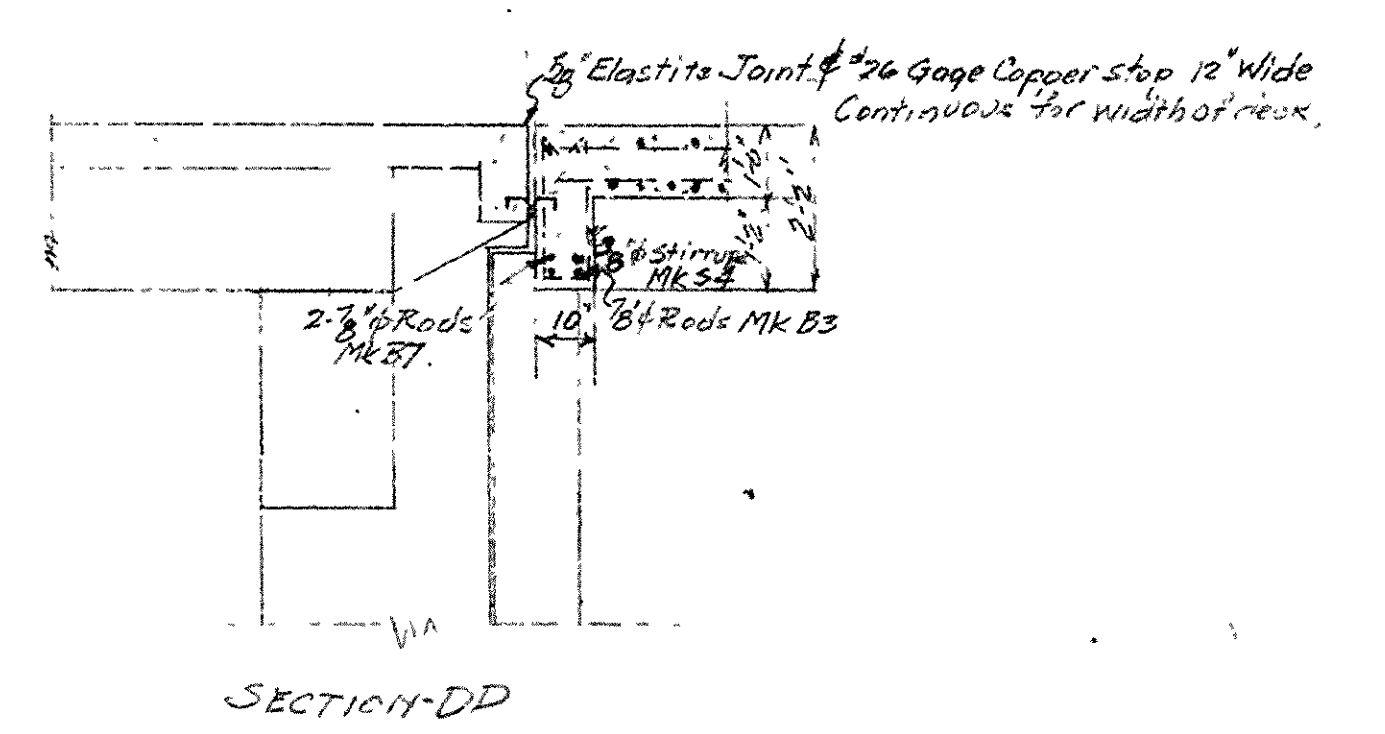
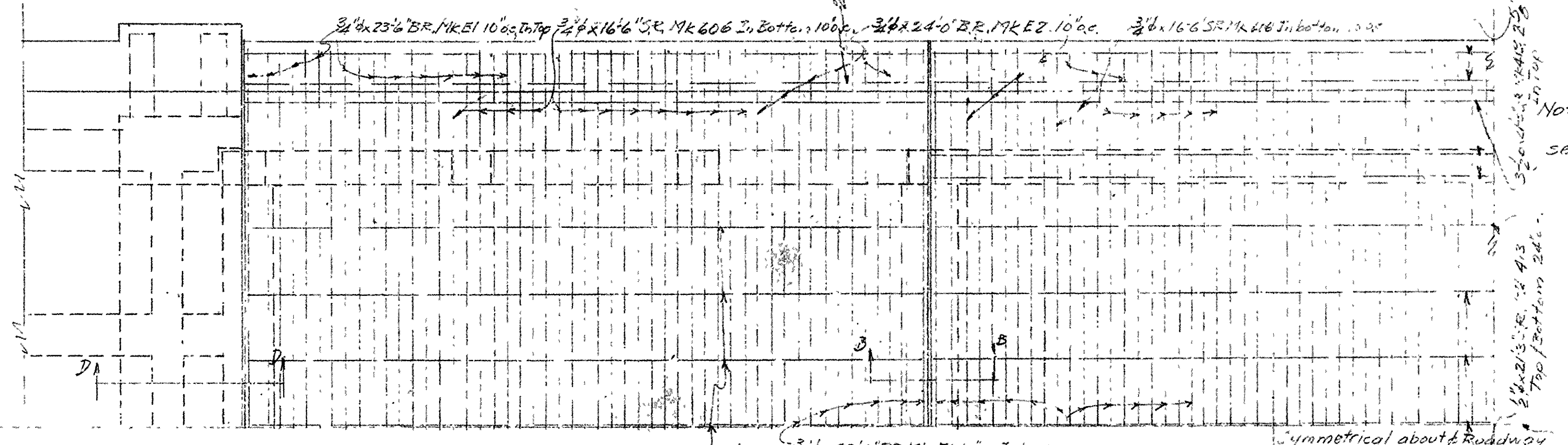
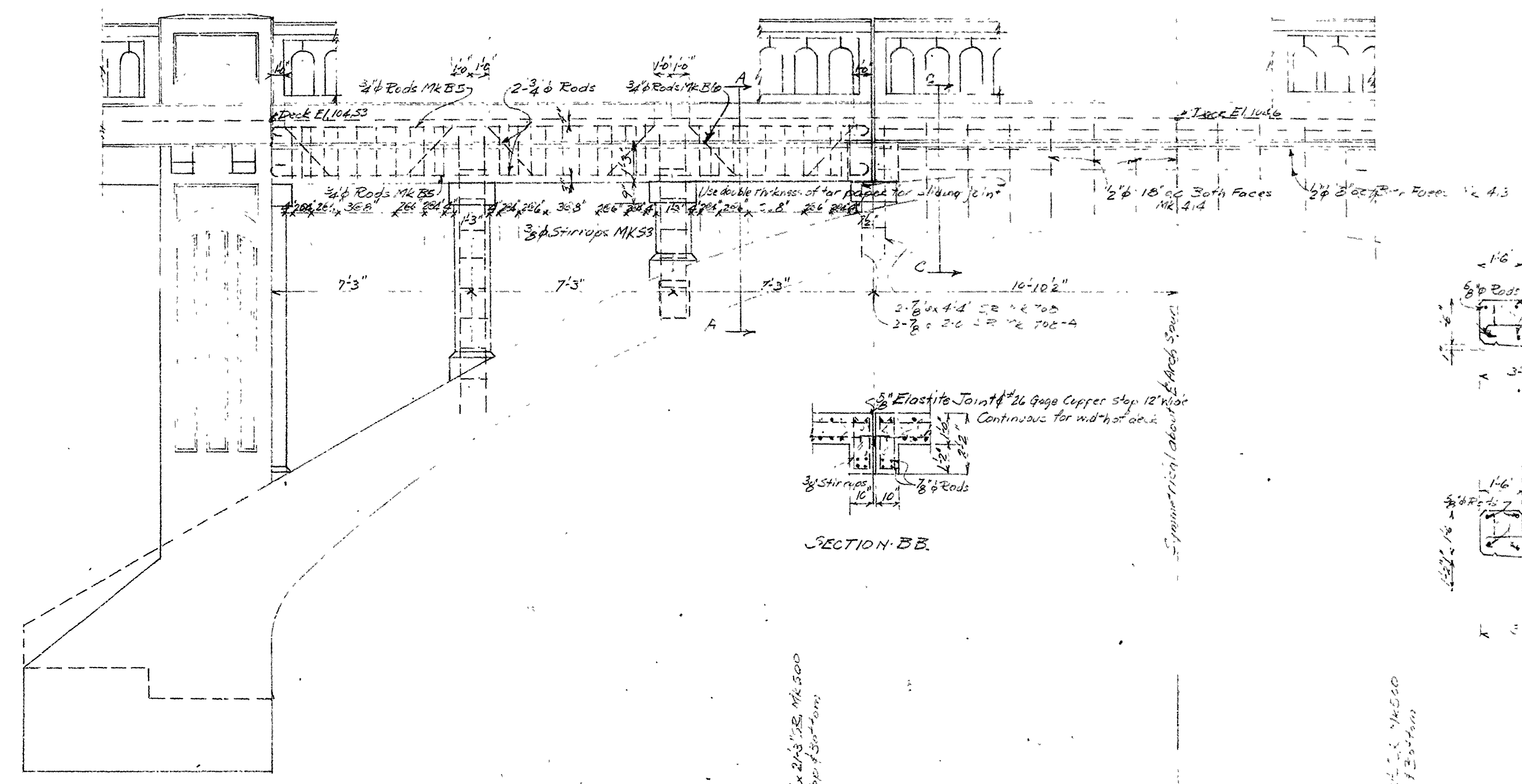
LAYOUT OF
BRIDGE OVER HARP CREEK.
6.8 MI. NO. OF JASPER, NEWTON CO.
ROUTE 7 SECTION 15
ARKANSAS STATE HIGHWAY DEPARTMENT
LITTLE ROCK, A. RK.

Scale: 1" = 5'-0"
Drawn By L.P.C. Date 12-6-27
Traced By L.P.C. Date 12-7-27
Checked By Date
Bridge No. 585 Drawing No 512

N.O. Weaver
Bridge Engineer

B.M. on 6" Elm stump 4' Rt. of C.
Sta. 5+30 Elev. 94.30 Assumed datum.

286-A 9-19
REVISED, DECS. OF CON. ARCH SPAN DR. 513A



Notes:
 For other details of arch and approach spans
 see Drawing # 513 and 514.
 For General Notes see Drawing # 514.

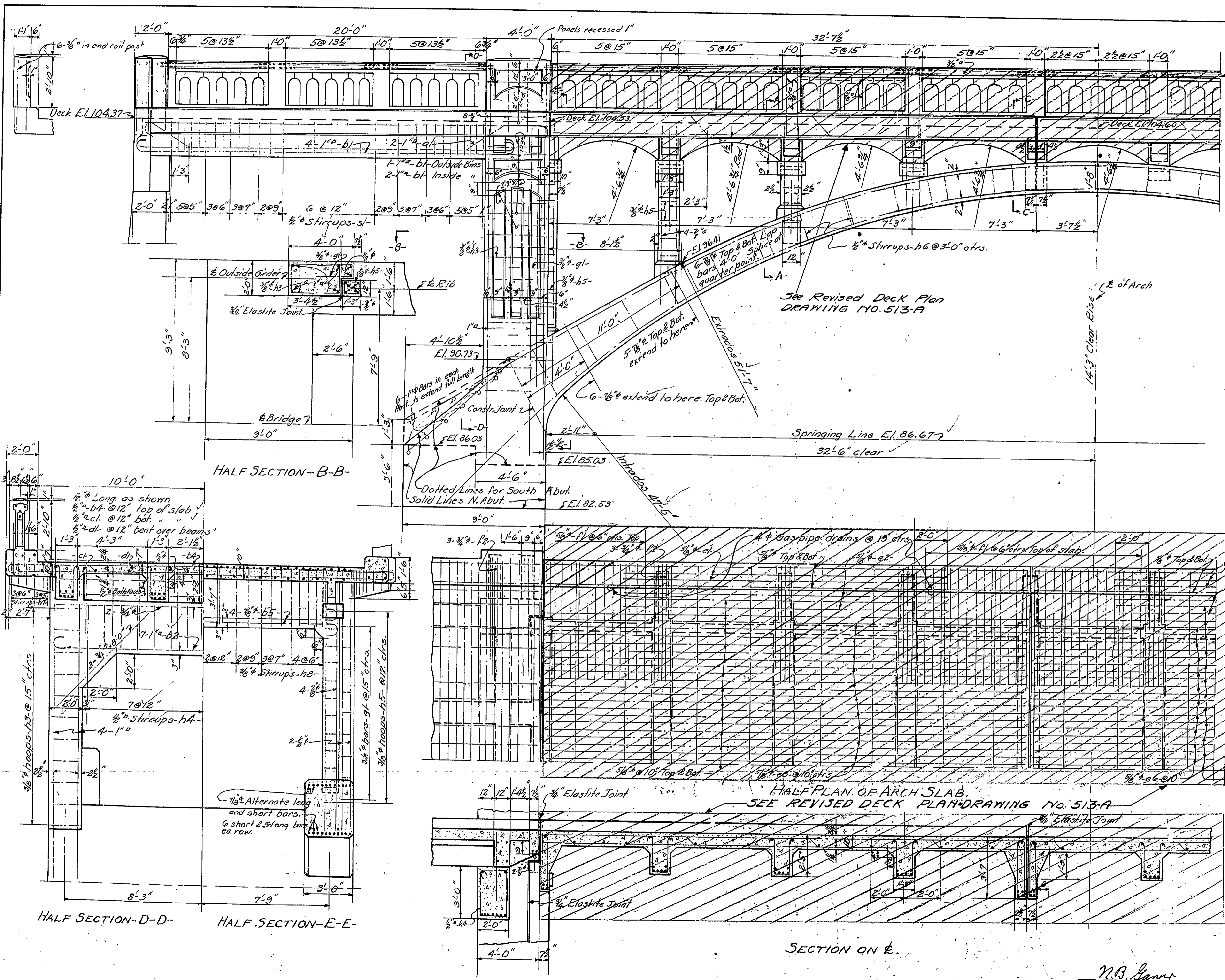
REVISED QUANTITIES
 Class 'S' Conc - 119.13 cu yds
 Reinforcing Steel - 40379 lbs

REVISED DESIGN FOR DECK OF
 CONCRETE ARCH SPAN
 BRIDGE OVER HARP CREEK
 4.8 MILE OF JASPER, NEWTON CO.
 ROUTE 7, SECTION 15.
 ARKANSAS STATE HIGHWAY DEPARTMENT
 LITTLE ROCK, ARK.
 Date: 1-15-28 Scale: 3/4\"/>

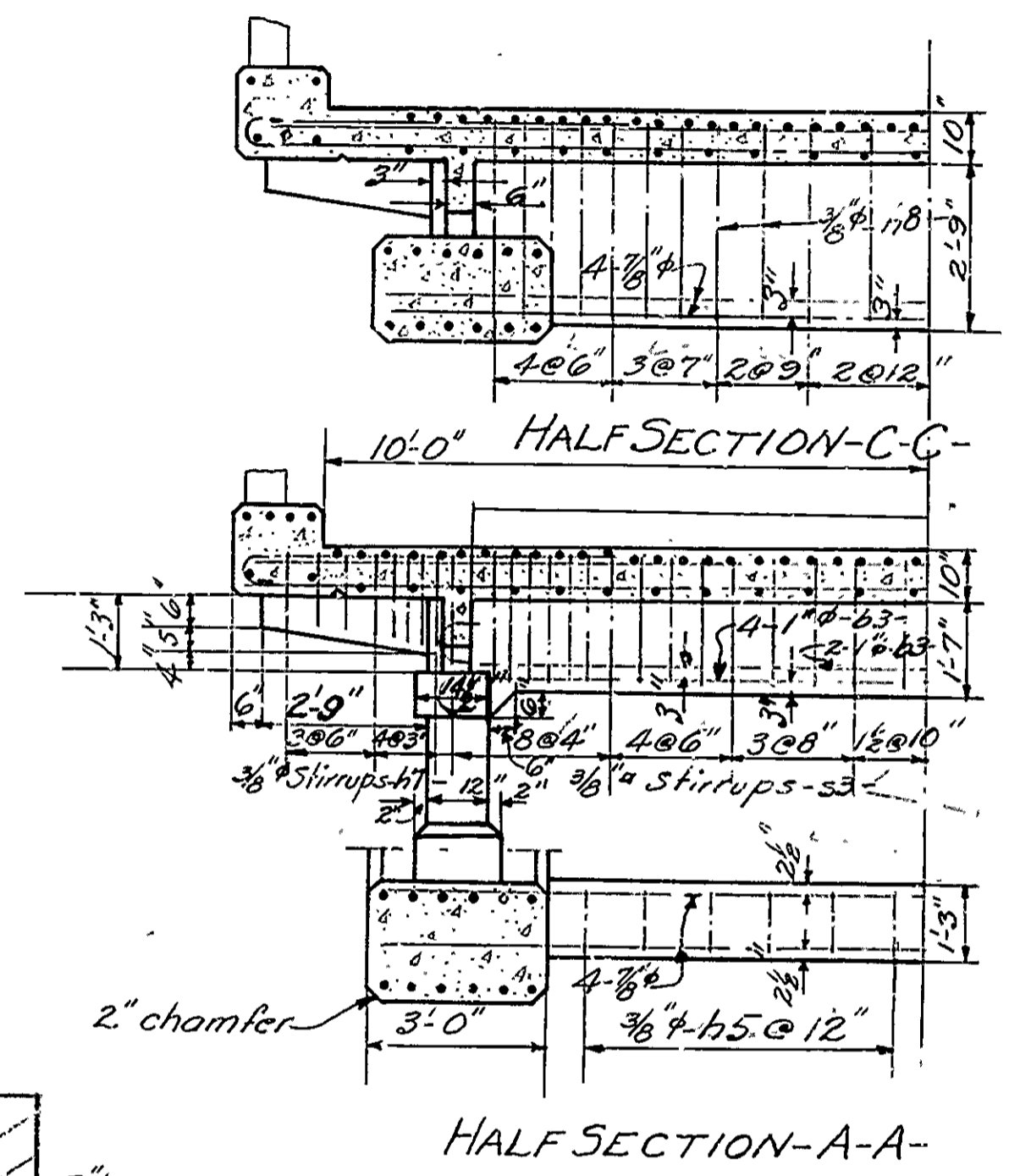
Revised: 1-20-28 For Bar Markings.

Bridge No. 283. Drawing No. 513A

PROJECT NO.	STATE	FOUNDED	SHEET NO.	TOTAL SHEETS
10	ARK.	1964	3	19
DEPT. OF CON. & HIGHWAY DIVISION				



For details of Handrail see Drg. No.



Notes:-
 Arch Footings shall have at least 12' of depth in sound rock at each face. The excavation shall be done in a manner to avoid shattering the rock faces.
 Plans showing falsework for the Arch and the proposed order of concreting must be submitted by the Contractor for approval before construction of the Arch is begun.
 For General Notes see Drg. No. 514.
 For details of Handrail, End Bents, Drains and Reinf. Steel see Drg. No. 514.

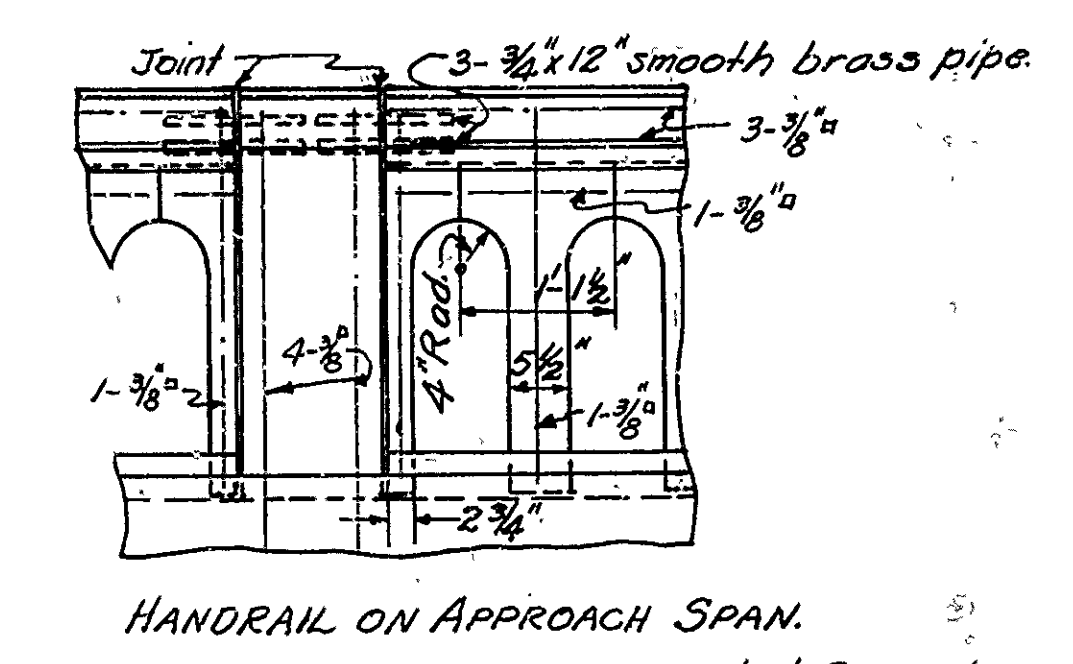
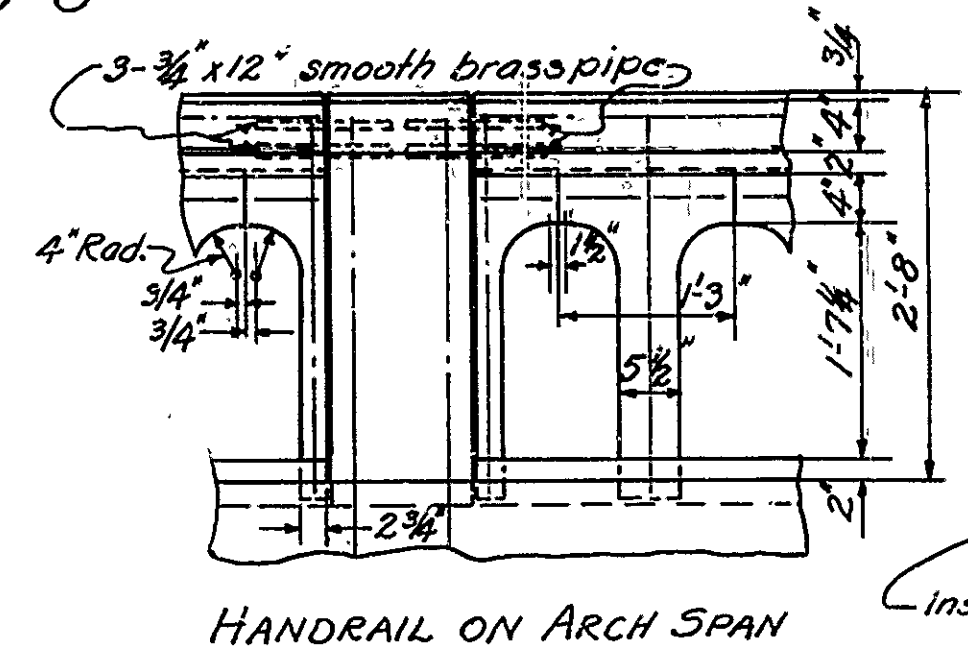
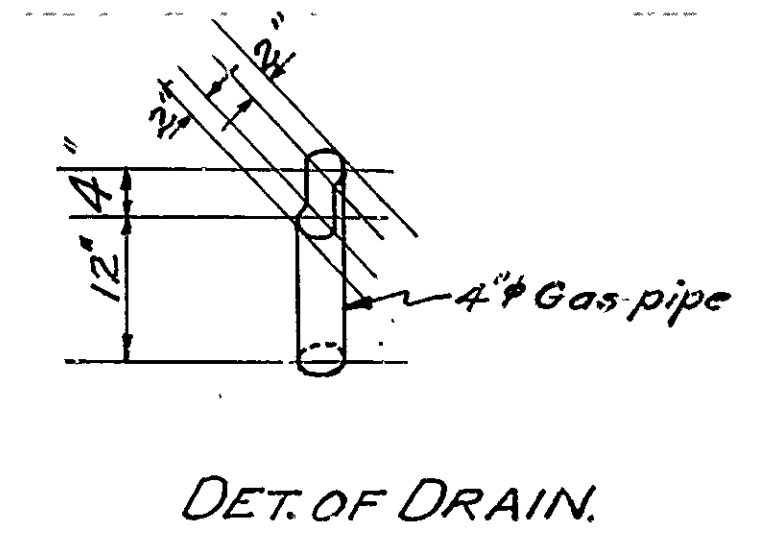
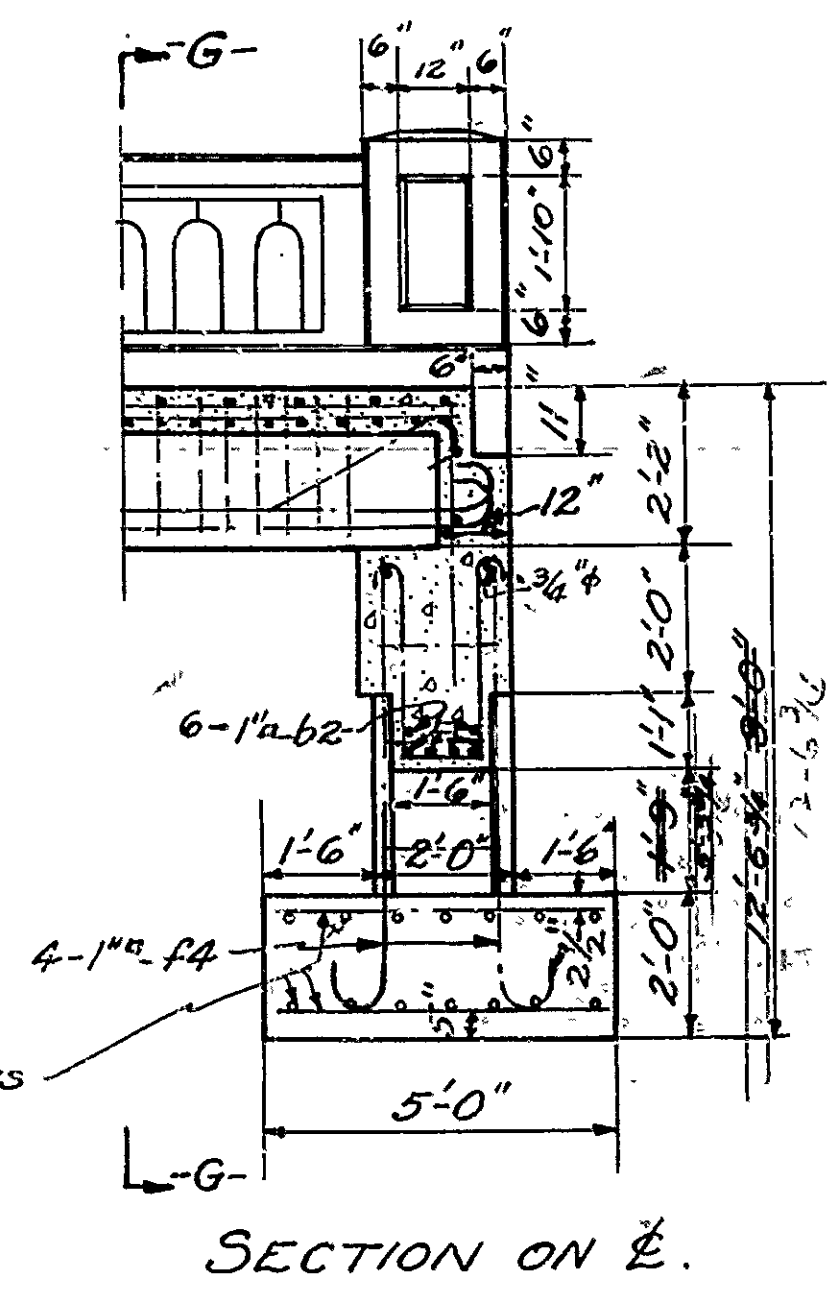
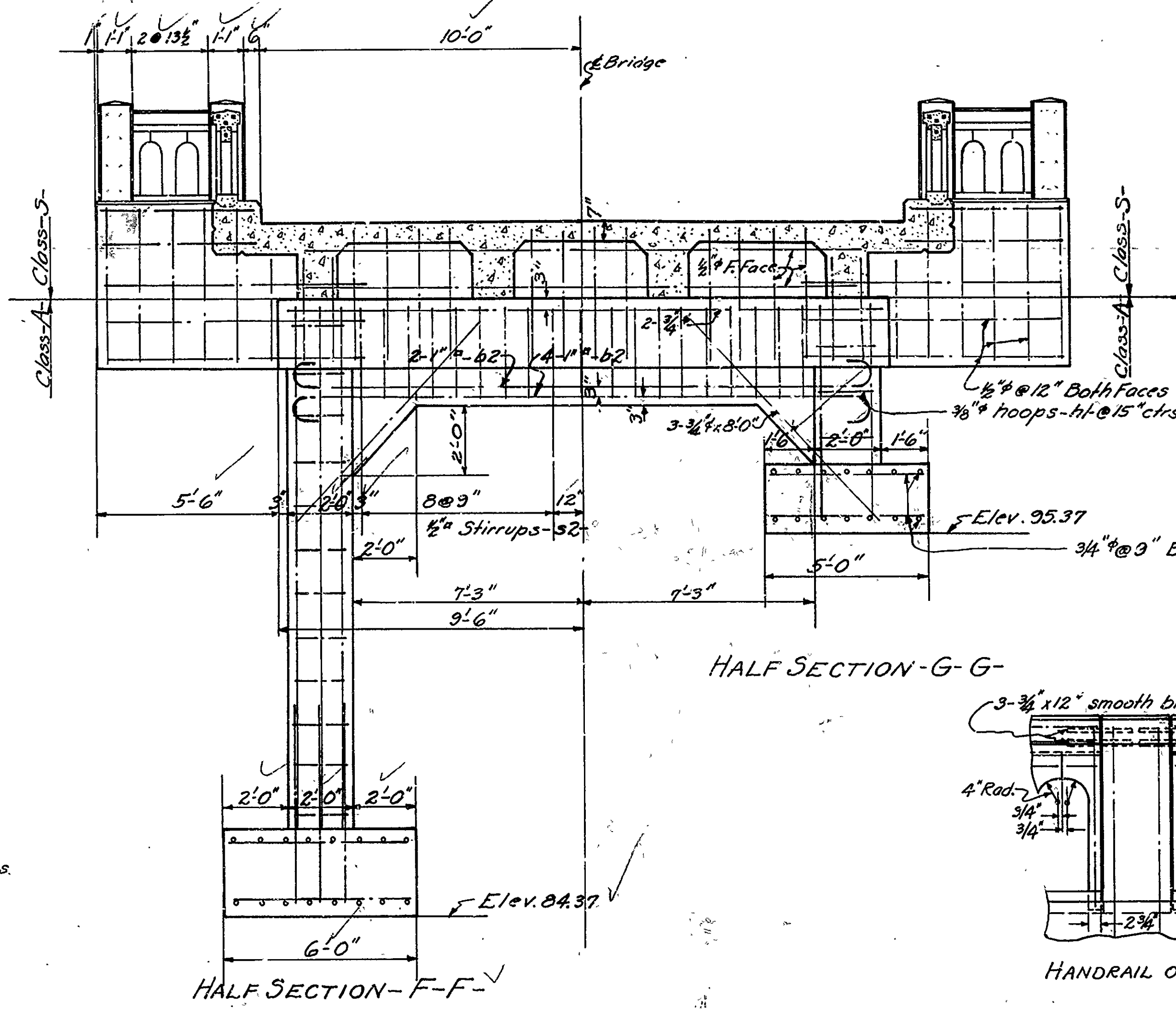
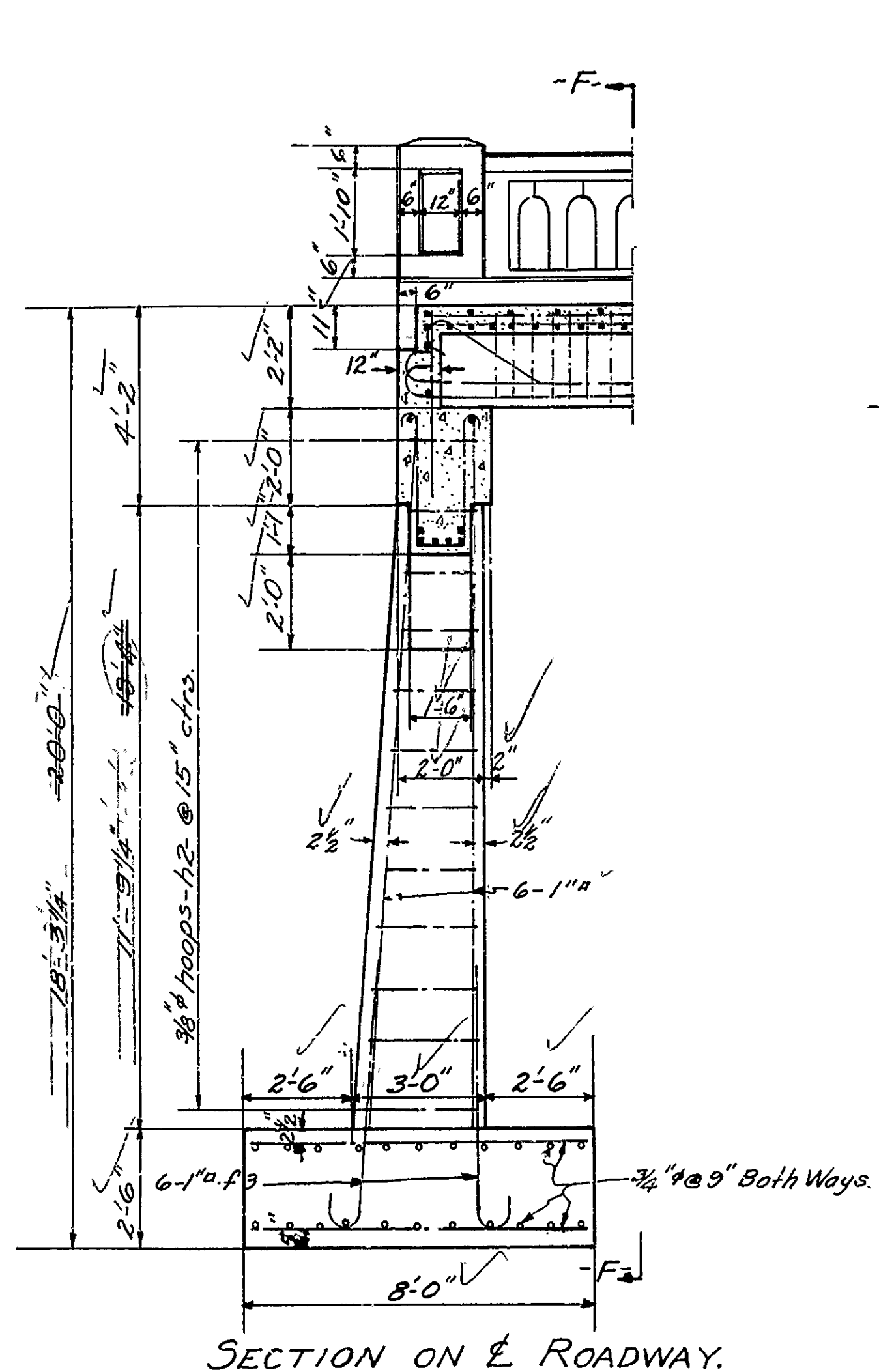
DETAILS OF
 CONC. ARCH AND APPROACH SPAN.
 BRIDGE OVER HARP CREEK
 6.8 MI. NO. OF JASPER, NEWTON CO.
 ROUTE 7 SECTION 15
 ARKANSAS STATE HIGHWAY DEPARTMENT
 LITTLE ROCK, ARK.
 Scale: 3/8" = 1'-0"
 Bridge No. 585 Drawing No. 513

N.B. Lanier
 BRIDGE ENGINEER

Drawn By L.P.C. Date 11-29-27
 Traced By L.P.C. Date 12-6-27
 Checked By Date

FED. ROAD DIST. No.	STATE	FED. AID PROJ. No.	FISCAL YEAR	SHEET No.	TOTAL SHEETS
6	ARK.	286-9		4	19

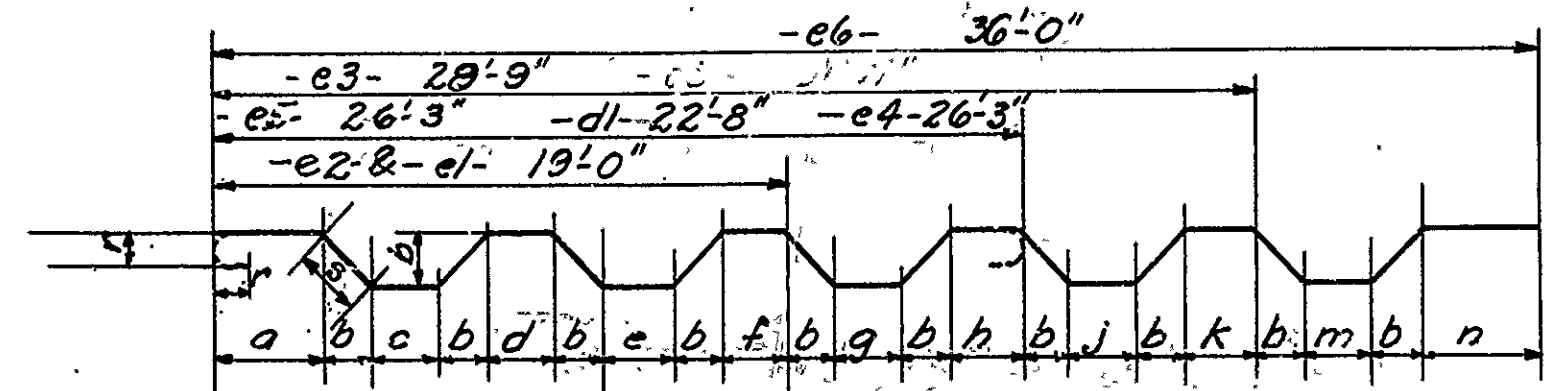
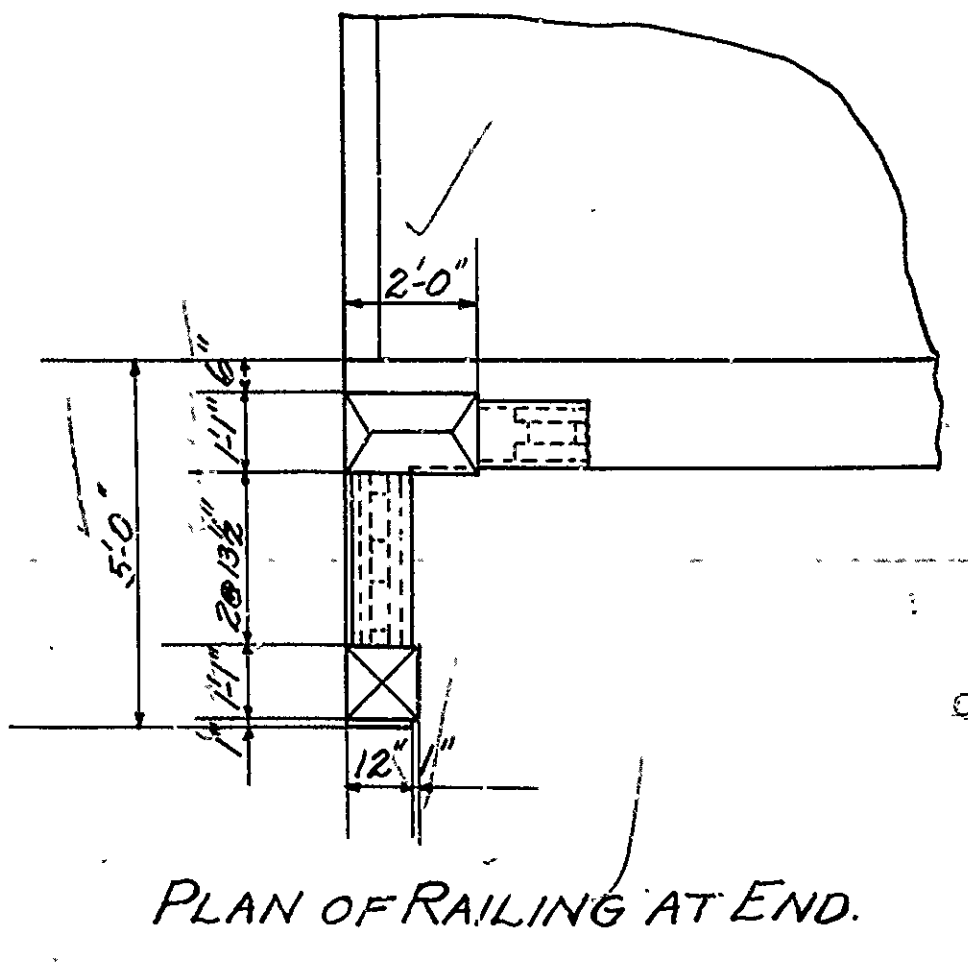
DETAILS END BT. S. BR. OVER CREEK HARP CR. D.P. 5.24



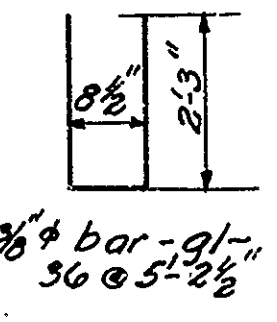
HANDRAIL DETAILS Scale 3/4" = 1'-0"

Suggested Procedure:
 1- Cast curb with groove as shown. 2- Cast rail posts with brass pipe in place. 3- Pull pipes 1" after initial set.
 4- Set Balusters and build forms. 5- Cast cap rail and base.
 1/8" bituminous felt joint between caprail and all posts except 3/4" at Expansion Joints.

General Notes:-
 All exposed corners to have 3/4" chamfer unless otherwise noted.
 Concrete handrails to be 1:3 Mix. Max. Agg. 1/2".
 Rail Posts to be Class-S-5 Concrete.
 All concrete above top of Column Caps, except handrails to be Class-S-5.
 All concrete below " " " " to be Class-A-1.
 " " " " to be poured in the dry.
 Reinforcing Steel to be deformed bars of Structural or Intermediate Grade.
 Shop List and Bending Diagrams of Reinforcing Steel must be submitted by Contractor before fabrication is begun.
 Roadway Drains and Exp. Devices to be paid for as Reinf. Steel Specifications: Arkansas Standard Road & Bridge Specifications adopted May 30th, 1925.



No.	Mk.	Size	a	b	c	d	e	f	g	h	j	k	m	n	r	s	Lgth
50	d1	5/8"	4'-6"	3 1/2"	2'-7"	2'-10"	2'-11"	2'-10"	2'-7"	4'-6"						4"	5'-8 1/2"
4	e1	3/8"	3'-6"	12"	2'-9"	2'-6"	2'-9"	3'-6"									1'-5"
4	e2	"	3'-0"	6 1/2"	3'-3"	2'-11"	3'-3"	3'-0"									9 1/2"
20	e3	"	1'-4"	6 1/2"	3'-3"	2'-11"	3'-3"	2'-11"	3'-3"	2'-11"	3'-3"	1'-4"					9 1/2"
4	e4	"	3'-6"	12"	2'-9"	2'-6"	2'-9"	3'-6"									1'-5"
4	e5	"	3'-6"	6 1/2"	3'-3"	2'-11"	3'-3"	2'-11"	3'-3"	2'-11"	3'-3"	1'-4"					9 1/2"
20	e6	"	1'-4"	6 1/2"	3'-3"	2'-11"	3'-3"	2'-11"	3'-3"	2'-11"	3'-3"	1'-4"					9 1/2"



Stirrups - s-

No.	Mk.	Size	a	b	Lgth
264	s1	5/8"	1'-8 1/2"	11"	5'-4"
38	s2	5/8"	2'-8 1/2"	14"	7'-7"
238	s3	3/8"	1'-11"	11"	5'-9"

Hoops & Stirrups - h-

No.	Mk.	Size	a	b	Lgth
8	h1	3/8"	1'-8 1/2"	1'-8 1/2"	8'-4"
24	h2	"	1'-8 1/2"	Var.	9'-2"
48	h3	"	1'-8 1/2"	2'-11"	10'-10"
30	h4	5/8"	2'-7 1/2"	1'-8 1/2"	10'-11"
124	h5	3/8"	8 1/2"	11"	4'-10"
50	h6	5/8"	Var.	2'-8"	10'-10"
145	h7	3/8"	"	6"	5'-0"
92	h8	"	3'-11"	2'-8"	8'-6"

Bars - b-

No.	Mk.	Size	a	b	Lgth
44	b1	1"	23'-8"	8"	25'-9"
26	b2	1"	18'-2"	8"	20'-3"
42	b3	1"	16'-2"	8"	18'-3"
52	b4	5/8"	22'-8"	4"	23'-8"
8	b5	3/8"	16'-2"	6"	17'-7"

Bars - f-

No.	Mk.	Size	a	b	Lgth
100	f1	3/8"	6'-0"	6"	7'-6"
66	f2	3/8"	6'-3"	6"	7'-6"
12	f3	1"	5'-6"	8"	6'-6"
8	f4	"	6'-0"	8"	7'-0"

DETAILS OF
 BRIDGE OVER HARP CREEK.
 6.8 MILES NO. OF JASPER, NEWT.
 ROUTE 7 SECTION 15
 ARKANSAS STATE HIGHWAY DEPARTMENT
 LITTLE ROCK, ARK.
 Drawn By L.P.C. Date 12-1-27
 Traced By L.P.C. Date 12-2-27
 Checked By Date
 Scale: 3/4" = 1'-0" (Except noted)
 Bridge No. 585
 Drawing No. 511/4

N.B. Sewer
 Bridge Engineers