

STATE OF ARKANSAS  
STATE HIGHWAY DEPARTMENT

PLAN OF PROPOSED BRIDGES  
ON  
EVENING SHADE-ASH FLAT ROAD  
SHARP COUNTY

FISCAL YEAR	JOB NO.	SHEET NO.	TOTAL SHEETS
1928	566	22	22

FED. ROAD DIST. No.	STATE	FED. AID PROJ. No.	FISCAL YEAR	SHEET No.	TOTAL SHEETS
8	ARK.	248A	1928	10	22

Prop. Brs. E.V.E. SHO. - ASH FLAT RD. DIST. 828

INDEX OF SHEETS

SHEET NO.	DRAW. NO.	TITLE
828		Title Sheet
829		Layout Br. No. 798
830		Details of Arch Span Br. No. 798
831		" " Approach Spans Br. No. 798
832		" " " " " " " " " "
833		Layout Br. No. 916
834		Details of Substructure Br. No. 916
835		" " Abutments " " " "
836		Layout Br. No. 799
837		Details of 90' Arch Br. No. 799
838		" " " " " " " " " "
839		Approach Spans Br. No. 799
840		Layout Br. No. 800
841		Details of Piers and Bents, Br. No. 800
842		Abutment No. 1
843		" " " " " " " " " "
844		Handrail
179		Details of Standard 35' R.C.D. Span
183		" " " " 25' " " " " " "
186		" " " " 30' " " " " " "
21 to 23		Profile Sheets
24		Typical 26' Cross Section Sheet

ROUTE 11 SEC. 16  
JOB NO 566  
FEDERAL AID PROJECT No.  
EMERGENCY FINANCIAL  
F.A.P. No. 248-A

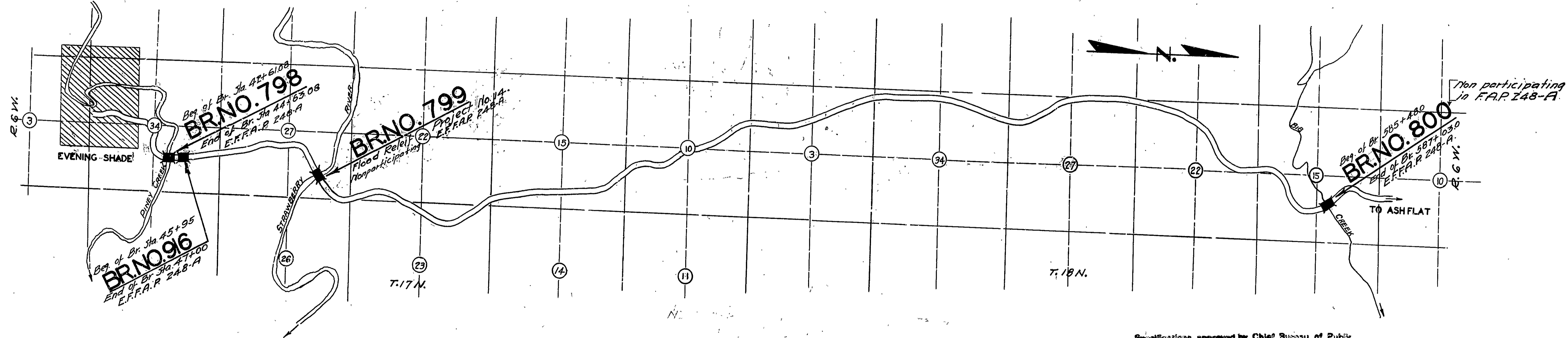
QUANTITIES FOR F.A.P. 248-A

No.	Item	Amount
PARTICIPATING WORK		
13	Dry Excavation for Structures	258 Cu. Yds.
13	Wet " " " "	769 " "
13	Solid Rock " " " "	119 " "
17	Borrow	9782 " "
54	Class "A" Concrete	422.85 " "
54	Class "B" Concrete	177.10 " "
54	Class "C" Concrete	328.26 " "
55	Reinforcing Steel	11558.90 #
69	Rip Rap 1' Thick	508.50 Cu. Yds.
74	Concrete Railing	837.00 Lin. Ft.

QUANTITIES Job No. 566

ITEM NO.	Description	Amount
12	Solid Rock Excavation	955 Cu. Yds.
12	Loose " " " "	0.0 " "
12	Earth " " " "	147 " "
13	Dry Excavation for Structures	752 " "
13	Wet " " " "	1289 " "
13	Solid Rock Excav " " " "	283 " "
17	Borrow	9782 " "
54	Class "A" Concrete	942.77 " "
54	" " " " " " " " " "	491.80 " "
54	" " " " " " " " " "	973.22 " "
55	Reinforcing Steel	317972 Lbs.
69	Rip Rap 1' Thick	310.0 Cu. Yds.
74	Concrete Railing for Structures	1659.03 Lin. Ft.

NONPARTICIPATING WORK  
12 Earth Excavation 147 Cu. Yd.  
17 Borrow 4490 " "



Specifications approved by Chief, Bureau of Public Roads, September 28, 1925, and adopted by State Highway Commission May 30, 1925, with revisions and Special Provisions as follows:

Pamphlet	Revised	Jan. 1, 1925	Approved	June 1, 1928
B	"	"	"	"
C	"	"	"	"
D	"	July 1, 1928	"	Nov. 24, 1928
E	"	"	"	"
F	"	"	"	"
G	"	"	"	"
H	"	"	"	"
I	"	"	"	"
J	"	"	"	"
K	"	"	"	"
L	"	April 1, 1928	"	"

No Special Provisions.

APPROVED  
COMMISSIONER - STATE LANDS, HIGHWAYS AND PUBLIC UTILITIES

APPROVED  
STATE HIGHWAY ENGINEER

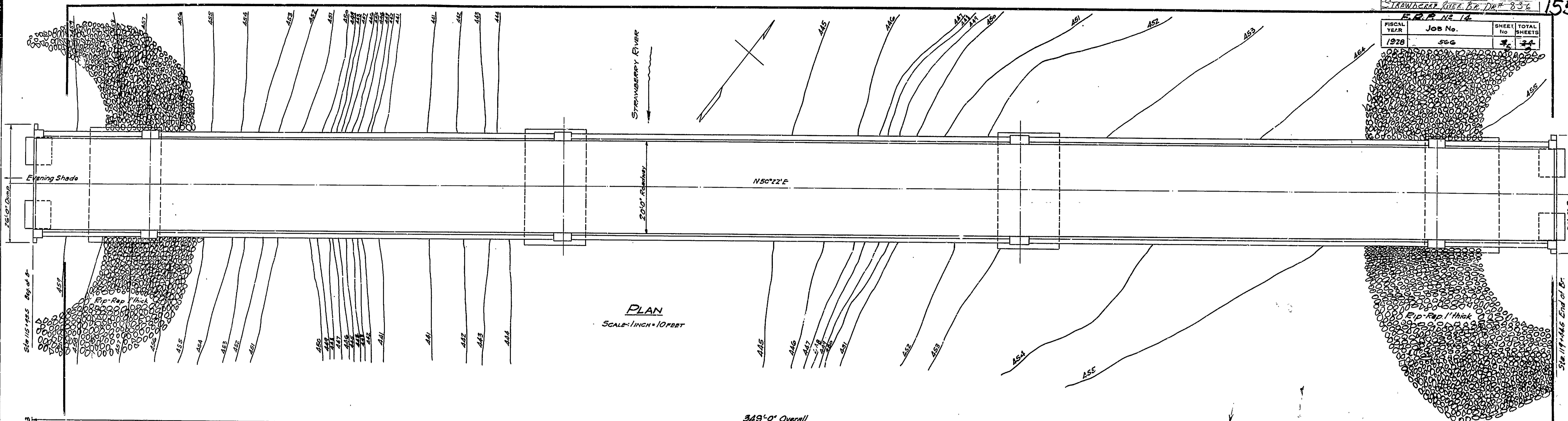
RECOMMENDED FOR APPROVAL  
DISTRICT ENGINEER - U. S. BUREAU OF PUBLIC ROADS

RECOMMENDED FOR APPROVAL  
CHIEF ENGINEER - U. S. BUREAU OF PUBLIC ROADS

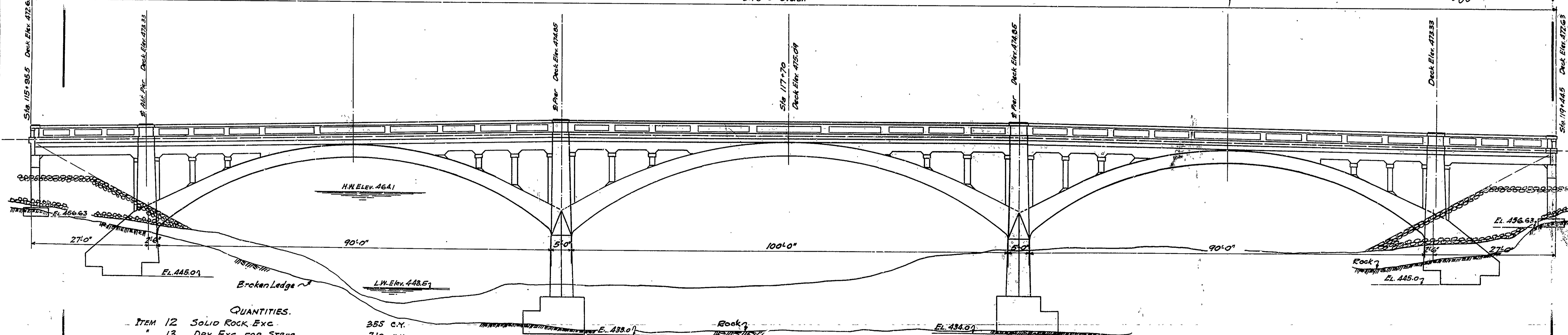
APPROVED  
DIRECTOR - U. S. BUREAU OF PUBLIC ROADS

LAYOUT  
Scale: 1"=2000'  
Job No. 566  
GROSS LENGTH OF PROJECT - 700 FT. 0.133 Miles  
NET LENGTH OF PROJECT - 700 FT. 0.133 Miles

FISCAL YEAR	JOB No.	SHEET No.	TOTAL SHEETS
1928	566	34	34



PLAN  
 SCALE: 1 INCH = 10 FEET



ELEVATION  
 SCALE: 1 INCH = 10 FEET

QUANTITIES.

ITEM 12	SOLID ROCK, EXC.	255	C.Y.
" 13	DRY EXC. FOR STRUC.	210	C.Y.
" 13	WET " "	386	C.Y.
" 13	Rock " "	143	C.Y.
" 17	BORROW	5232	C.Y.
" 54	CLASS 'A' CONC.	430.40	C.Y.
" 54	" B. CONC.	380.70	C.Y.
" 54	" S. CONC.	347.96	C.Y.
" 55	REINF. STEEL	129,884	LBS.
" 74	CONC. H. RAIL FOR STRUC.	702	LIN. FT.
" 69	RIP RAP 1 FT. THICK	310	SQ. YDS.

See Drawgs. Nos. 837, 838, & 839 for Details.

Drainage Area: 212 sq. Mi.  
 Water Shed: Rolling to Hilly.

B.M. Elev. 466.69  
 Elev. on roof of 20' white Oak - 75' Left Sta. 115+30

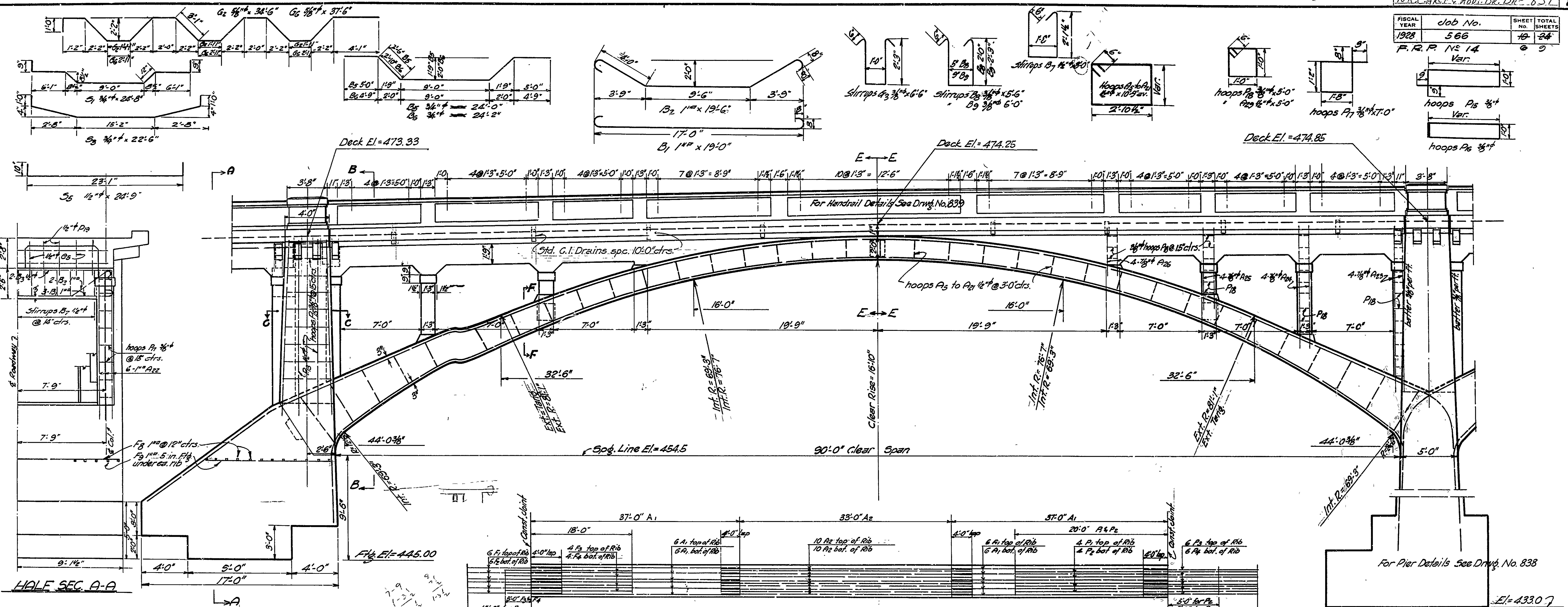
LAYOUT  
**STRAWBERRY RIVER BRIDGE**  
 SHARP COUNTY  
 ROUTE 11 SEC. 16  
 ARKANSAS STATE HIGHWAY DEPARTMENT  
 LITTLE ROCK, ARK.

Drawn By: EAN Date: 5/2/28  
 Traced By: AM Date: 5/2/28  
 Checked By: AM Date: 5/2/28  
 BRIDGE NO. 799 SCALE: 1 in. = 10 ft.  
 DRAWING NO. 836

BRIDGE ENGINEER



FISCAL YEAR	Job No.	SHEET NO.	TOTAL SHEETS
1928	566	18	24
F. R. P. No. 14		6 9	



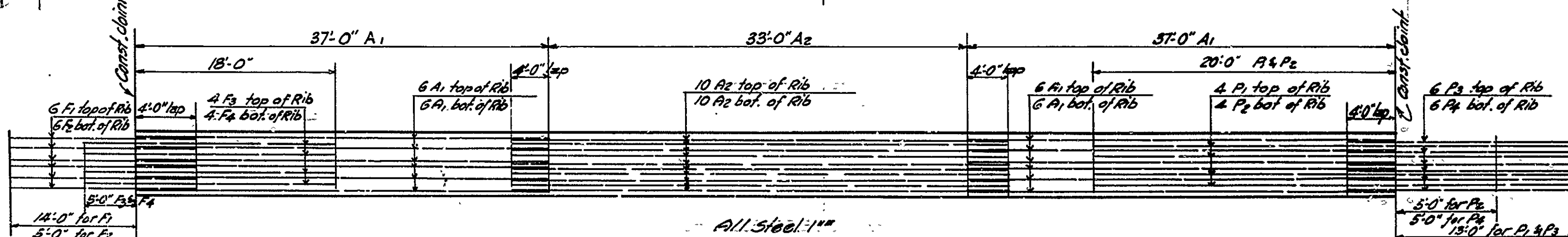
HALF SEC. A-A

HALF SEC. B-B

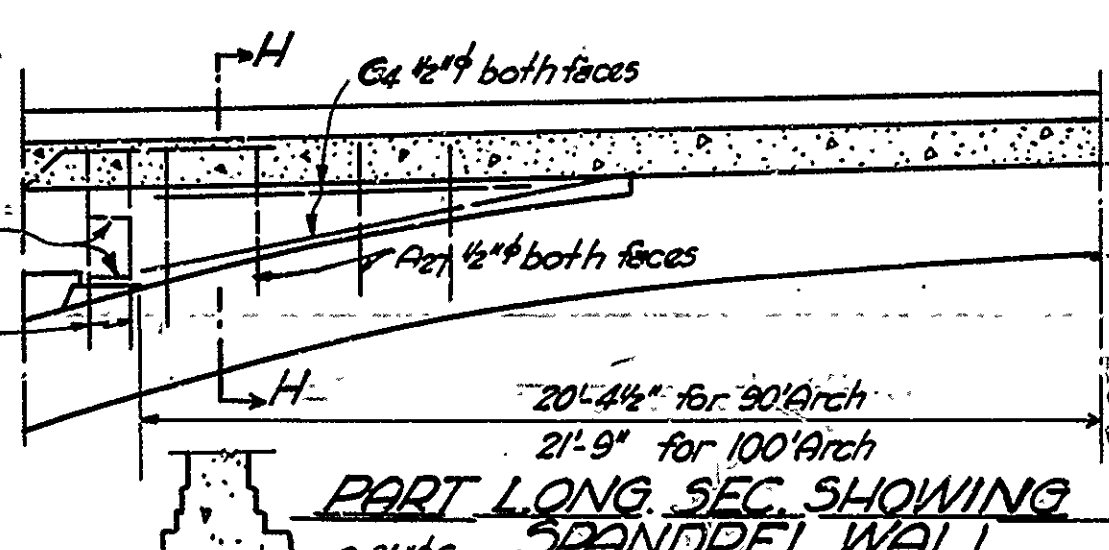
SEC. C-C

SEC. ONE OF ABT.

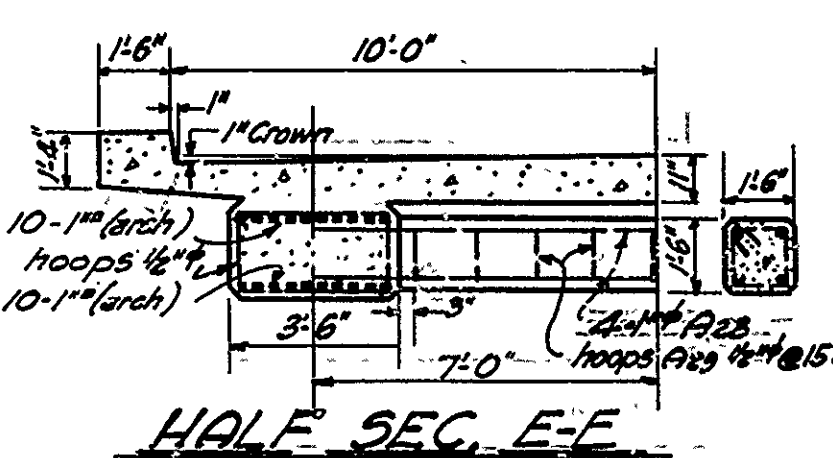
HALF SEC. D-D



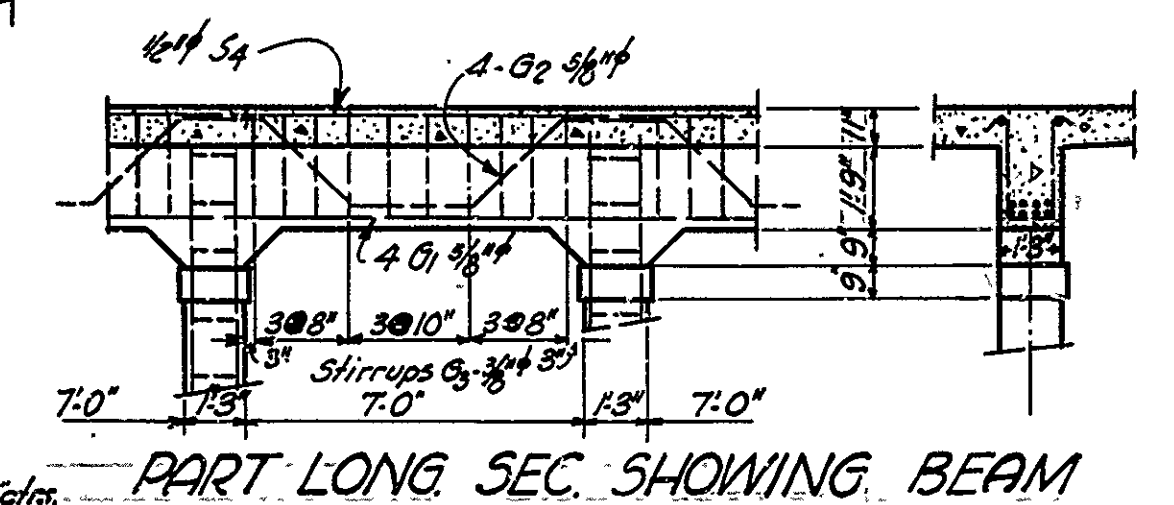
SKETCH SHOWING SPACING OF STEEL IN RIB



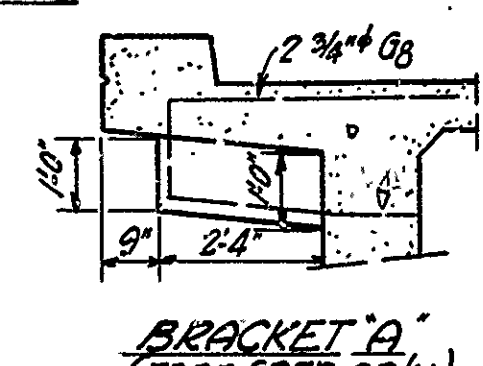
PART LONG SEC. SHOWING SPANDREL WALL



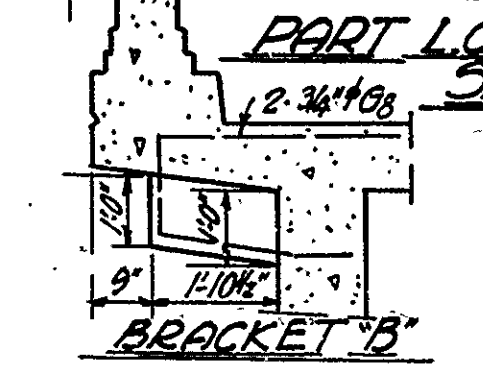
HALF SEC. E-E



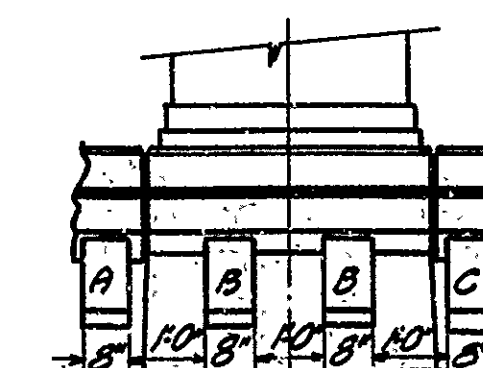
PART LONG SEC. SHOWING BEAM



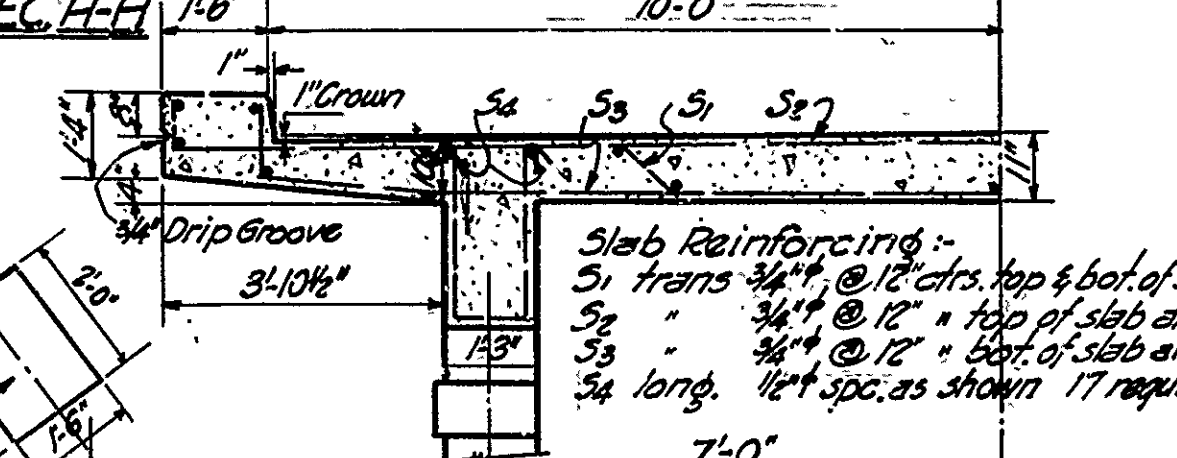
BRACKET A (approx. span only)



BRACKET B



BRACKET C



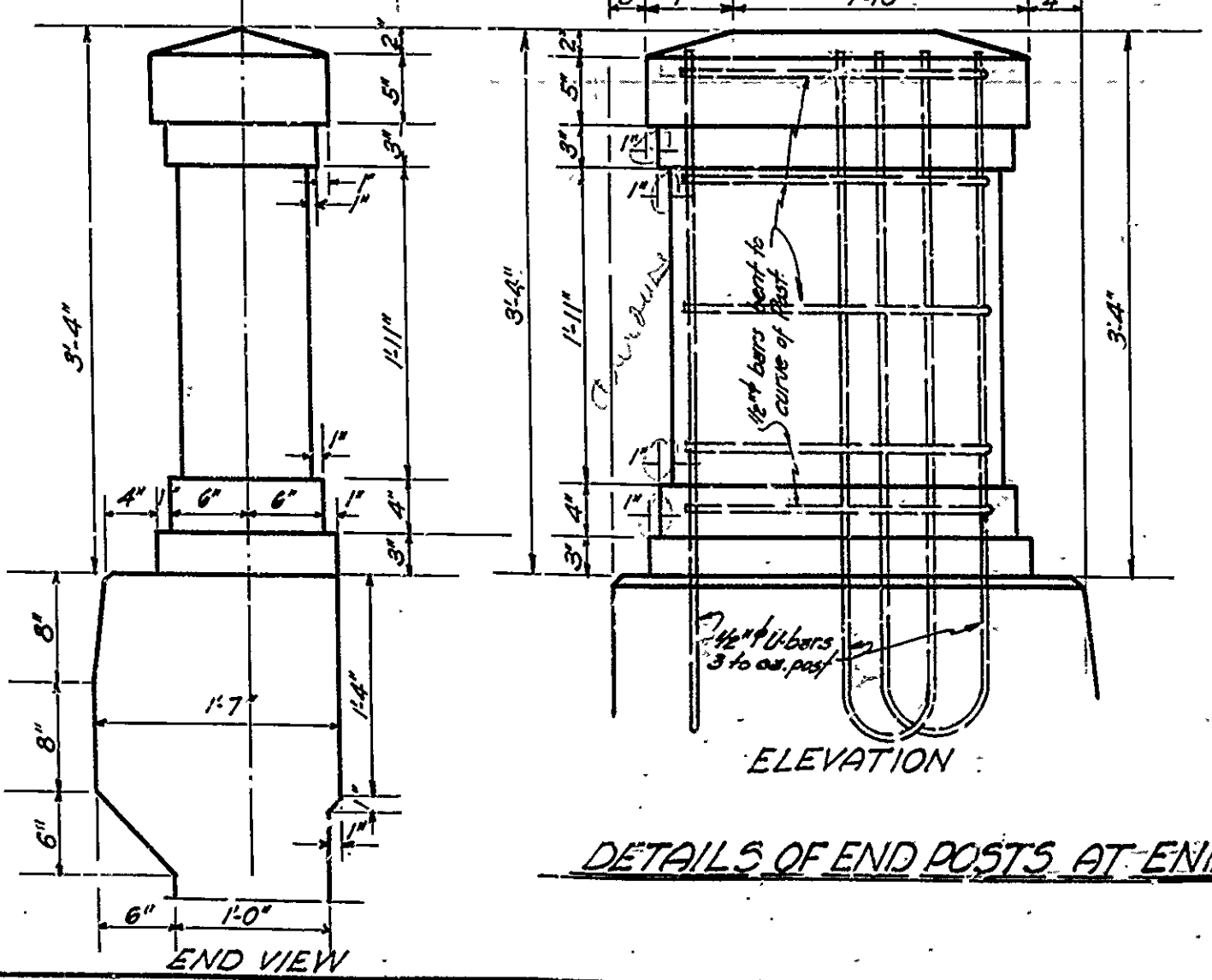
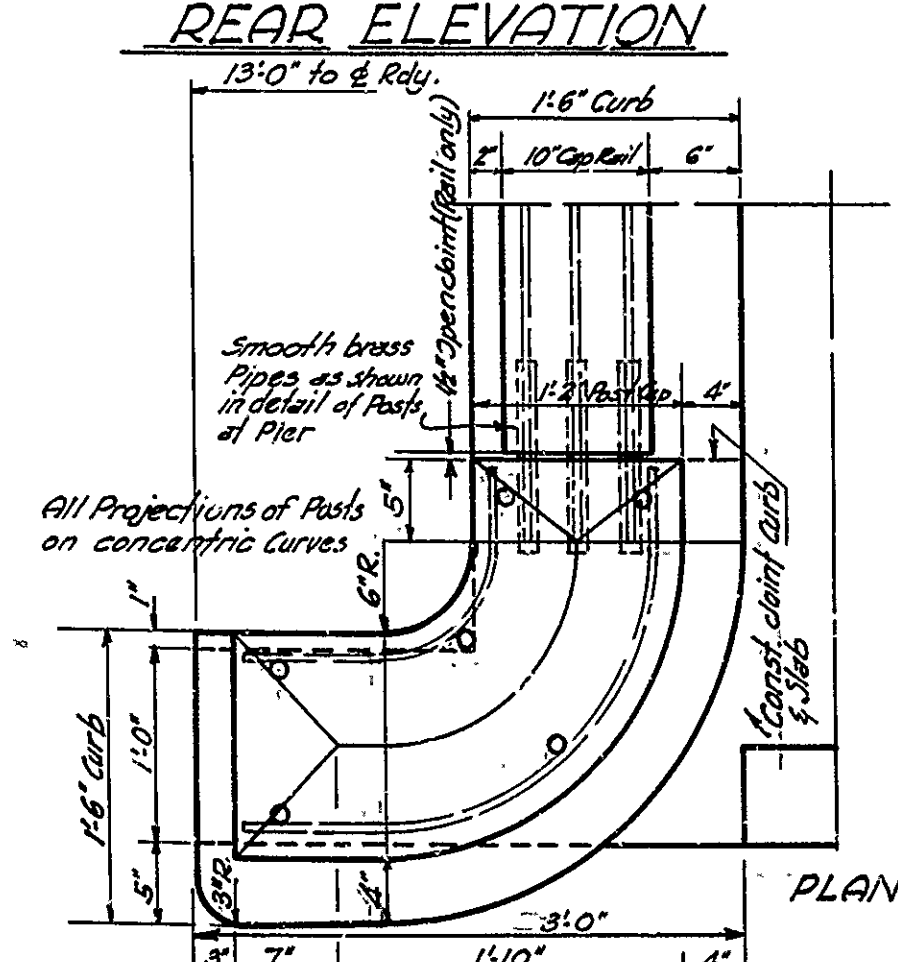
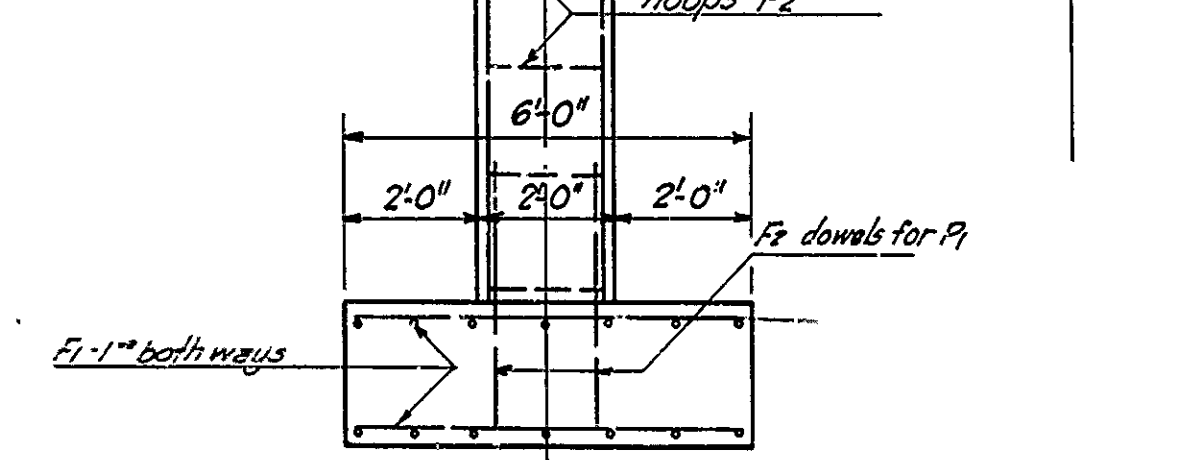
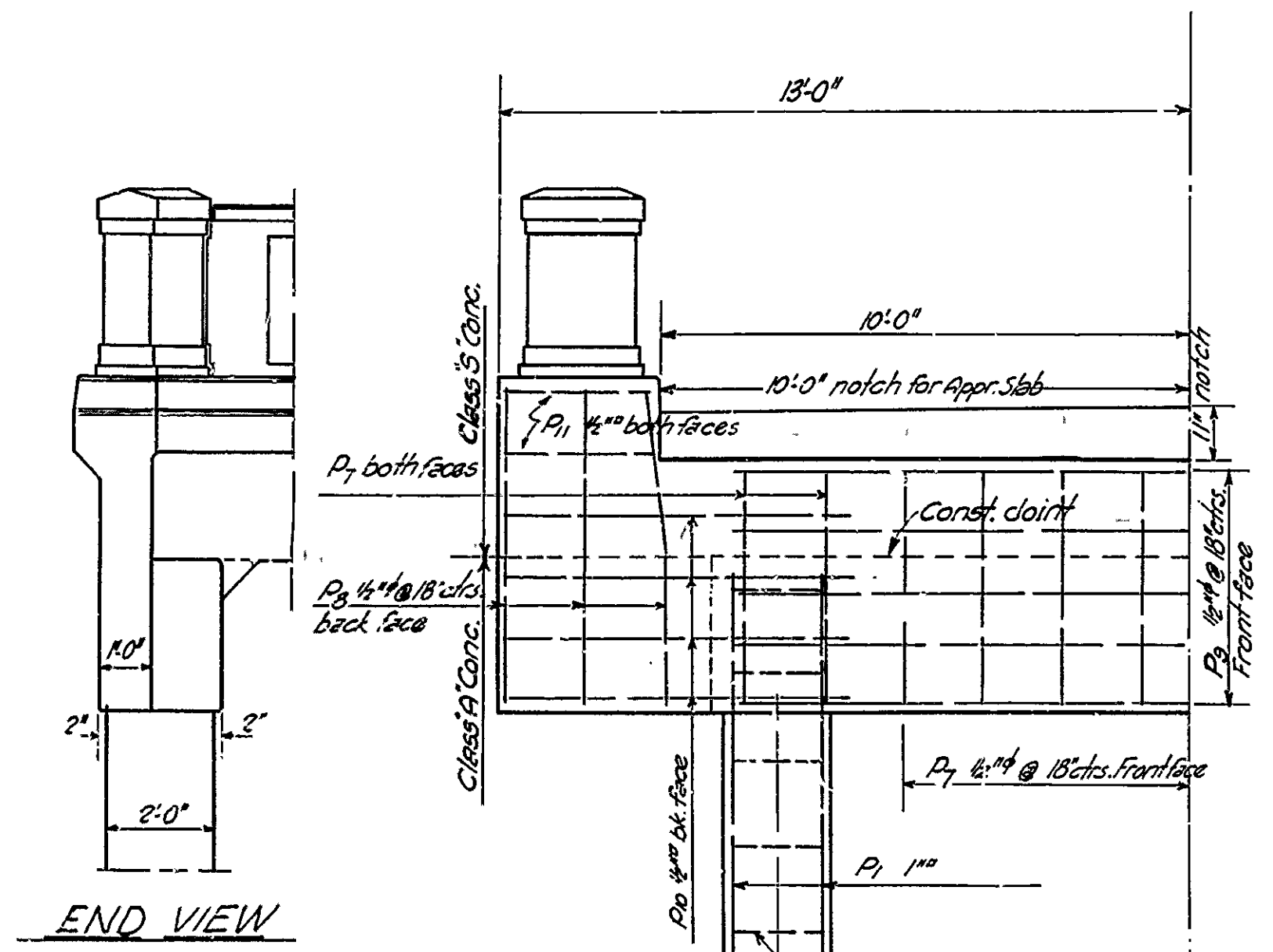
TYPICAL SEC. SLAB & CURB

**DETAILS OF 90° R.C. ARCH AND ABUTMENTS BRIDGE OVER STRAWBERRY RIVER**  
 ROUTE 11 SEC. 16  
 ARKANSAS STATE HIGHWAY DEPARTMENT  
 LITTLE ROCK, ARK.

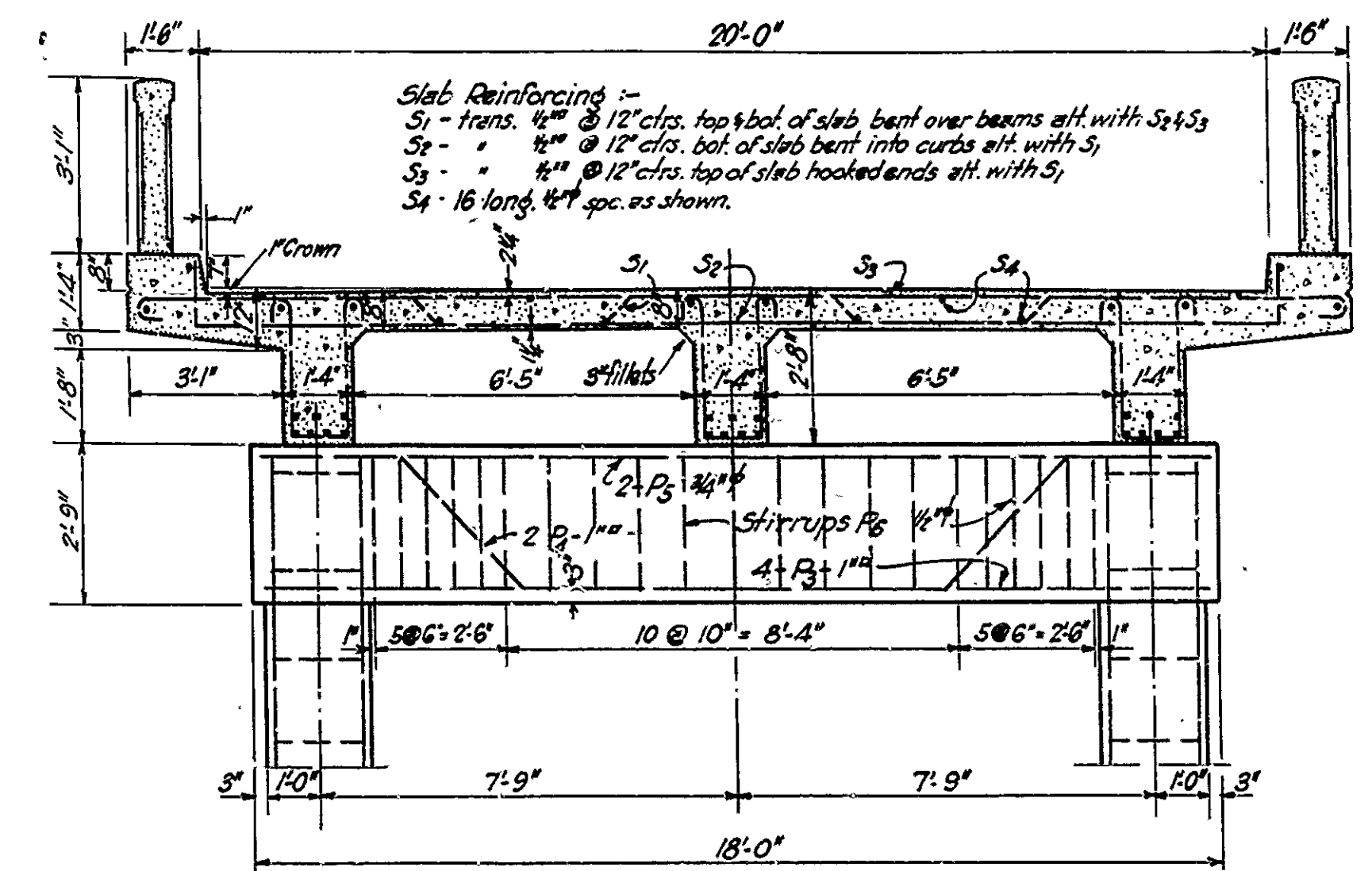
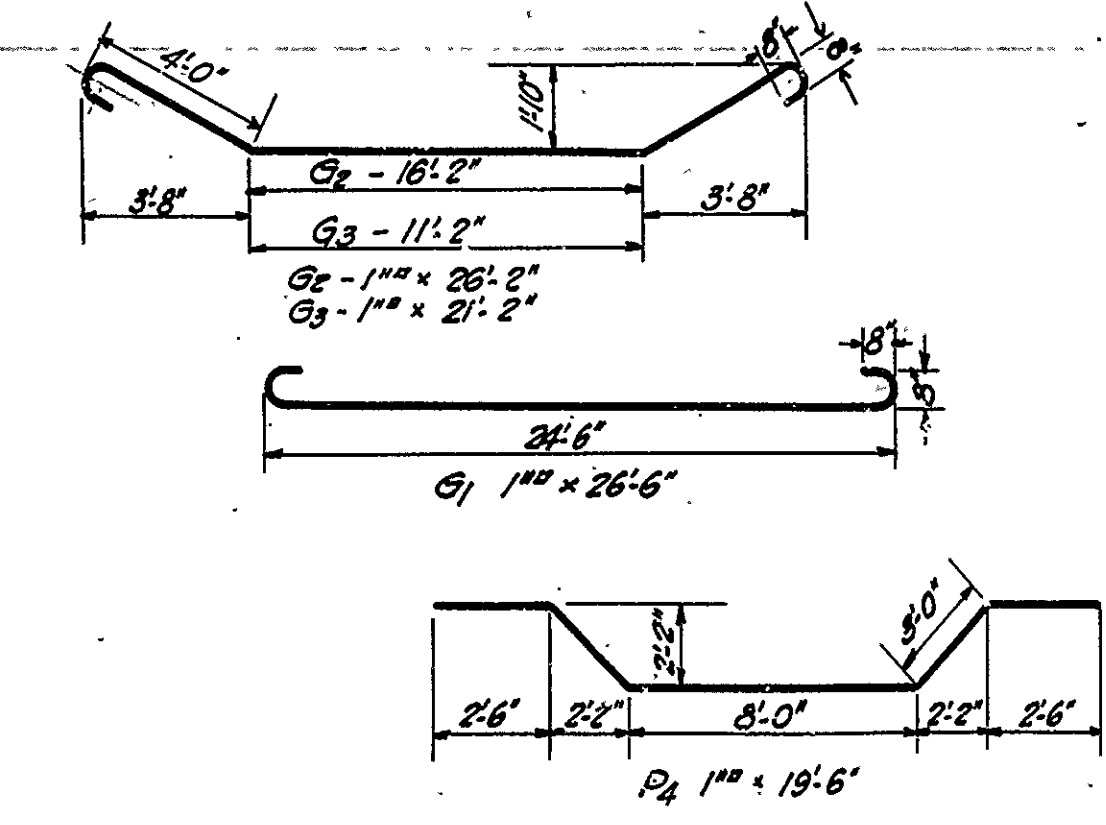
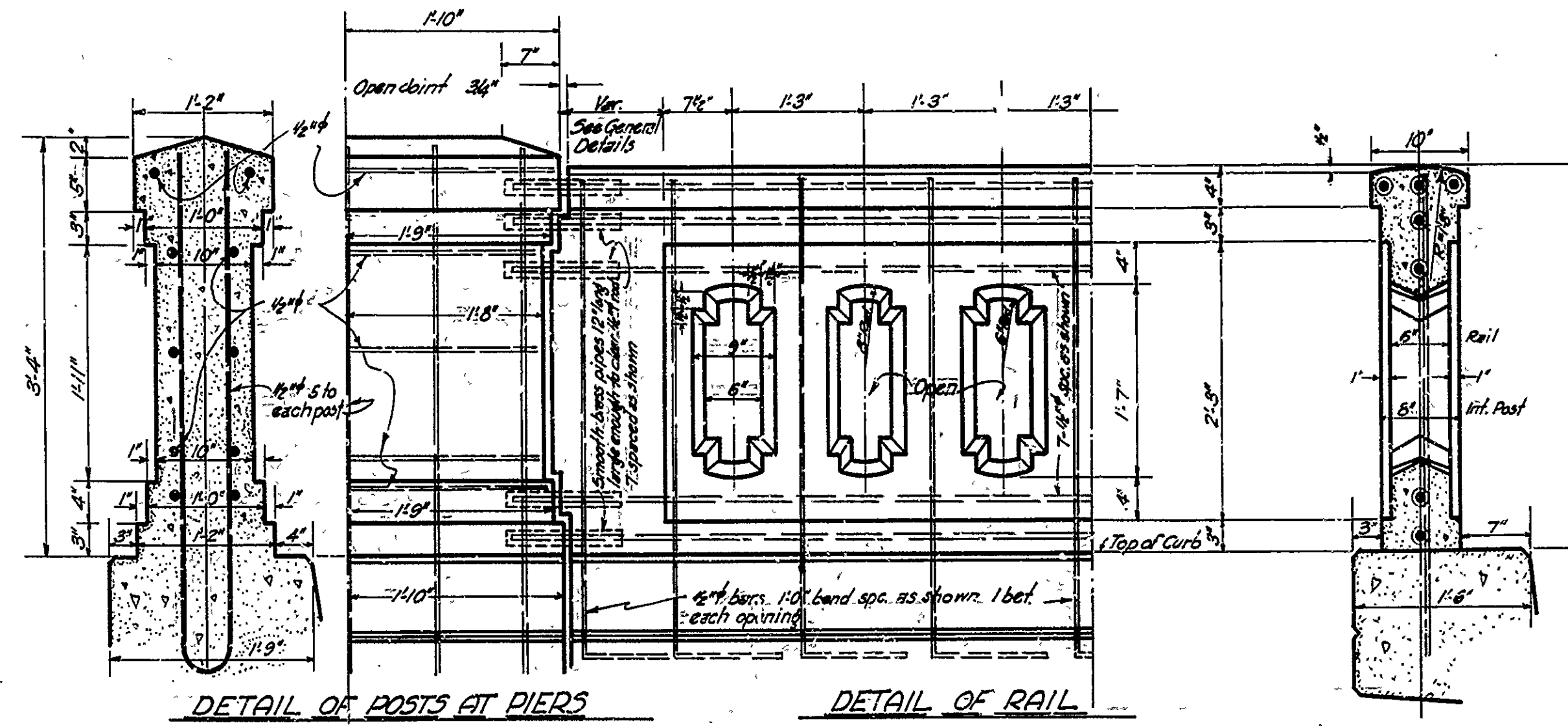
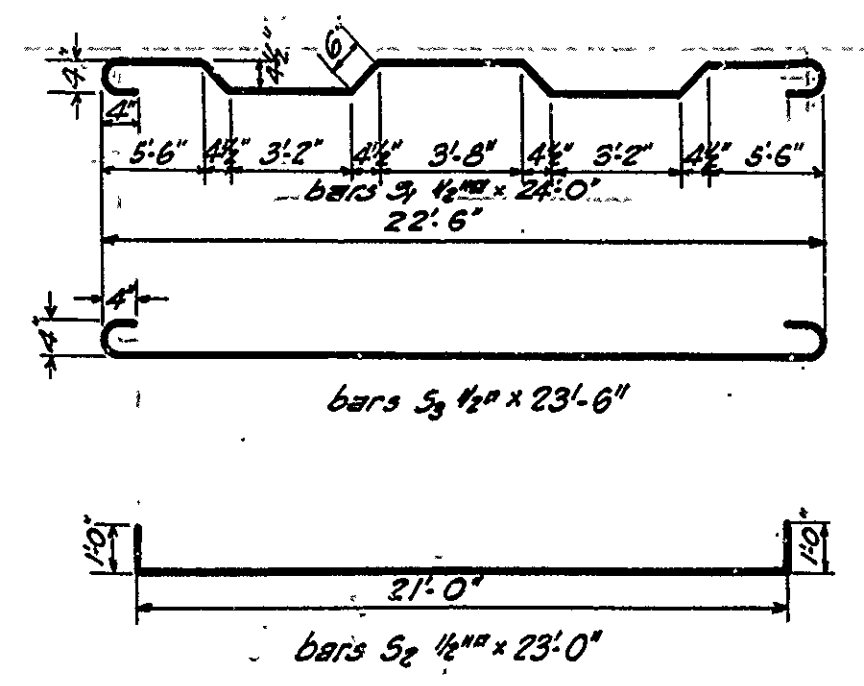
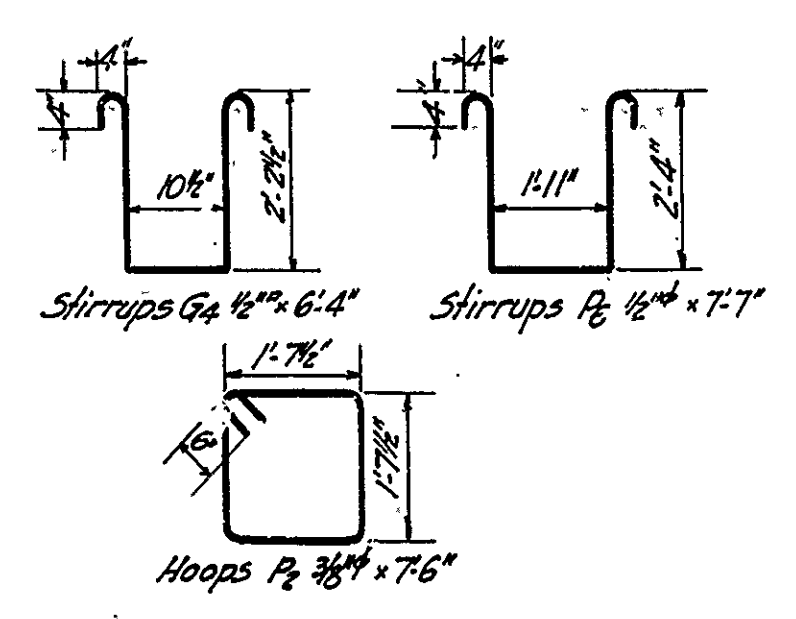
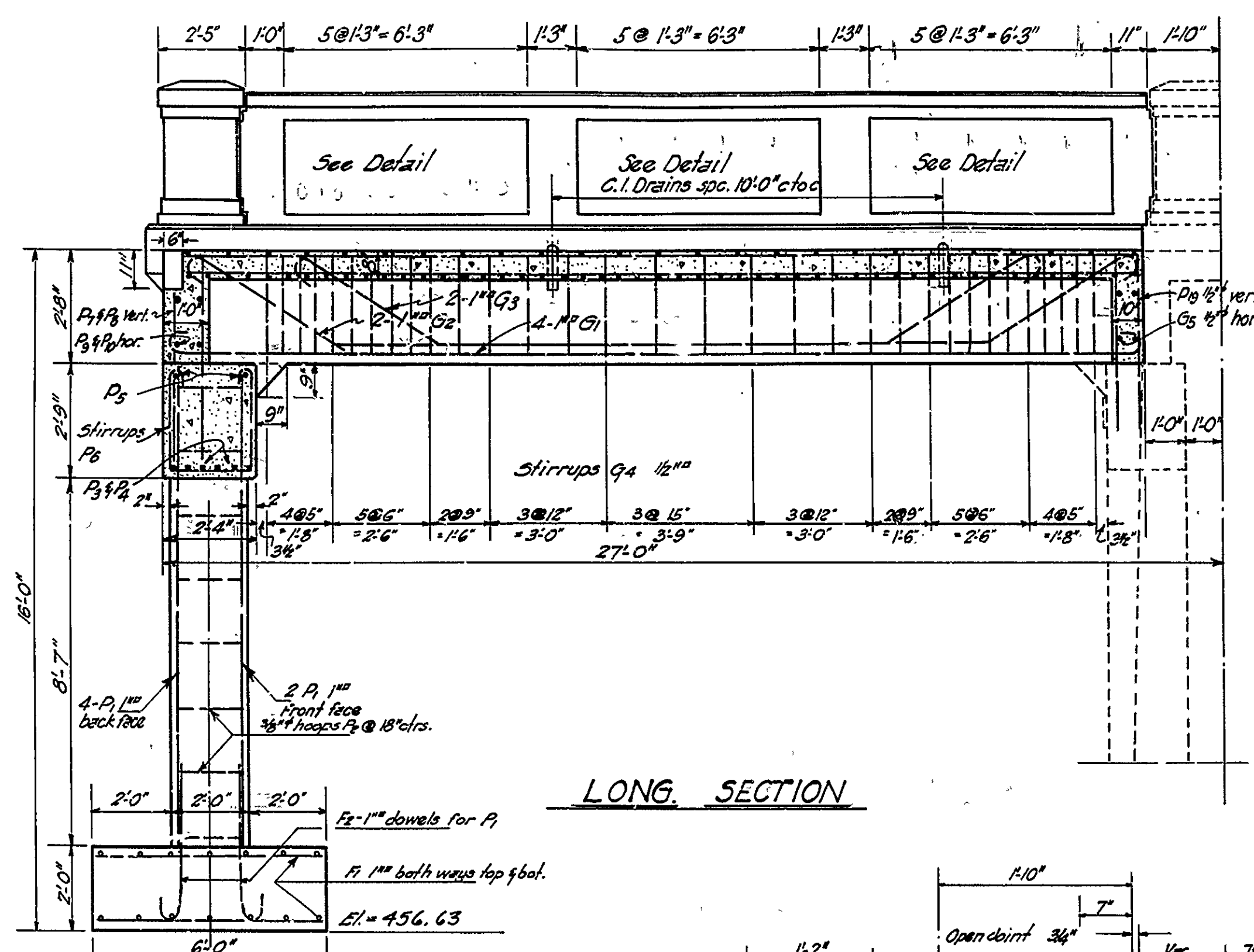
Drawn By: *W.H.* Date: 5-4-28  
 Traced By: *W.H.* Date: 5-11-28  
 Checked By: *W.H.* Date:   
 BRIDGE No. 799  
 Scale: 1/4 in. = 1 ft.  
 DRAWING No. 837

*W.H.*  
 BRIDGE ENGINEER

R.C. GIRDER APPROACH SPAN BRIDGE No. 799			
FISCAL YEAR	JOB NO.	SHEET NO.	TOTAL SHEETS
1928	566	12	24
F.R.P. No. 14		3	9



DETAILS OF END POSTS AT END BENTS



Slab Reinforcing -  
 S<sub>1</sub> - trans. 1/2" @ 12" cfs. top of slab bent over beams alt. with S<sub>4</sub>  
 S<sub>2</sub> - " 1/2" @ 12" cfs. bot. of slab bent into curbs alt. with S<sub>1</sub>  
 S<sub>3</sub> - " 1/2" @ 12" cfs. top of slab hooked ends alt. with S<sub>1</sub>  
 S<sub>4</sub> - 16 long 1/2" spc. as shown.

**GENERAL NOTES**

All exposed corners to have 3/4" chamfer unless otherwise noted.

Rail posts to be Class "D" concrete.

Reinforcing steel to be deformed bars of structural or intermediate grade.

Shop list and bending diagrams of reinforcing steel must be submitted by contractor before fabrication is begun.

Plans showing falsework details for the arches and proposed order of concreting the arches must be submitted for approval before construction is begun.

Roadway drains and expansion devices to be paid for as reinforcing steel.

Specifications: Arkansas Standard Road & Bridge Specifications adopted May 30, 1925. Revised Jan. 1, 1928.

All concrete above top of column caps (or bottom of longitudinal girders on arches) except hand rail to be Class "S".

All concrete below top of column caps except concrete in abutments below construction joint (which shall be class "B" concrete) to be class "A" concrete.

All concrete to be poured in the dry.

**DETAILS OF R.C. GIRDER APPROACH SPAN ARCH BRIDGE OVER STRAWBERRY RIVER**

ROUTE 11 - SEC. 16

ARKANSAS STATE HIGHWAY DEPARTMENT

LITTLE ROCK, ARK.

Drawn by: E.A.W. Date: 5-4-28

Traced by: E.A.S. Date: 5-7-28

Checked by: Date:

BRIDGE NO. 799

Scale: 3/8" = 1'-0" and 1" = 1'-0"

DRAWING NO. 839

M.B. Lamm