

STATE OF ARKANSAS
STATE HIGHWAY COMMISSION

FISCAL YEAR	JOB NO.	SHEET NO.	TOTAL SHEETS
1929	960	1	16

Prop. By: HARRIS & W. GROVE R. DIST. 75

INDEX OF SHEETS

Sheet No.	Drawg No.	Title Sheet
1	1675	Title Sheet
2	1676	Layout of Bridge No. 869
3	1677	Details of Abutment No. 1, Br. No. 869
4	1678	" " " " " " " " " "
5	1679	" " Bent and Turnout " " " " " "
6	1680	" " Superstructure " " " " " "
7	1681	Layout of Bridge No. 871
8	1682	Details of Abutments, Br. No. 871
9	1683	" " Bent and Turnout, Br. No. 871
10	1684	" " 35'-0" R.C.C. Girder, 20'-0" Rdwy. Br. No. 871
11	1684	3 Gir. Type - Special H. Rail - Superstr. Br. No. 871
12	1685	Layout of Bridge No. 872
13	1686	Detail of Abutments, Bridge No. 872
14	1687	" " Bent and Turnout, Br. No. 872
15	1687	Layout of Bridge No. 873
16	1688	Detail of Arch, Br. No. 873
	1689	" " Wings, " " " " " "

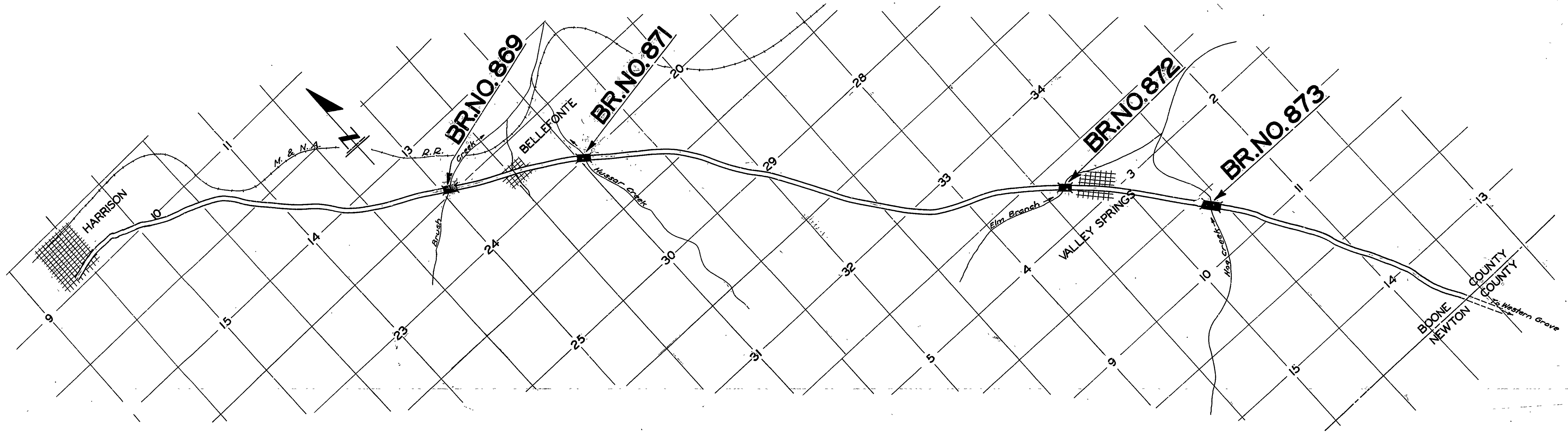
QUANTITIES

Item No.	Description	Quantity	Unit
13	Dry Excavation for Structures	249	Cu. Yds.
"	" " " " " " " " " "	591	" "
"	" " " " " " " " " "	140	" "
"	" " " " " " " " " "	3000	" "
"	" " " " " " " " " "	596.94	" "
"	" " " " " " " " " "	320.97	" "
"	" " " " " " " " " "	129,047	Lbs.
"	" " " " " " " " " "	758	Lin. Ft.
"	" " " " " " " " " "	452	Cu. Yds.

PLAN OF PROPOSED BRIDGES
ON
HARRISON-WESTERN GROVE ROAD
BOONE COUNTY

ROUTE 65 SEC. 2

JOB No 960



The Specifications adopted by the State Highway Commission, May 30th, 1925 apply with subsequent revisions and Special Provisions noted apply to this Project.

- Pamphlet A Revised Sept. 1st, 1928
- " B
- " C
- " D Revised July 1st, 1928
- " E
- " F
- " G
- " H Revised Oct. 1st, 1928
- " I
- " J Revised Jan. 1st, 1929
- " K
- " L Revised Jan. 1st, 1929

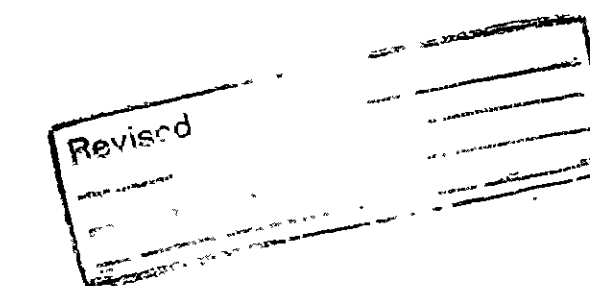
SPECIAL PROVISIONS.

Item	No. of Sheets
Revision to Par. 172 & 173	1
Earth Fill in Arch	1

LAYOUT

Scale: 1"=2000'

LENGTH OF PROJECT = 526'-0"
LENGTH OF BRIDGES = 326'-5 1/2"
LENGTH OF EMBANKMENT = 199'-6 1/2" = 0.0378 Mi.



APPROVED
CHAIRMAN - STATE HIGHWAY COMMISSION

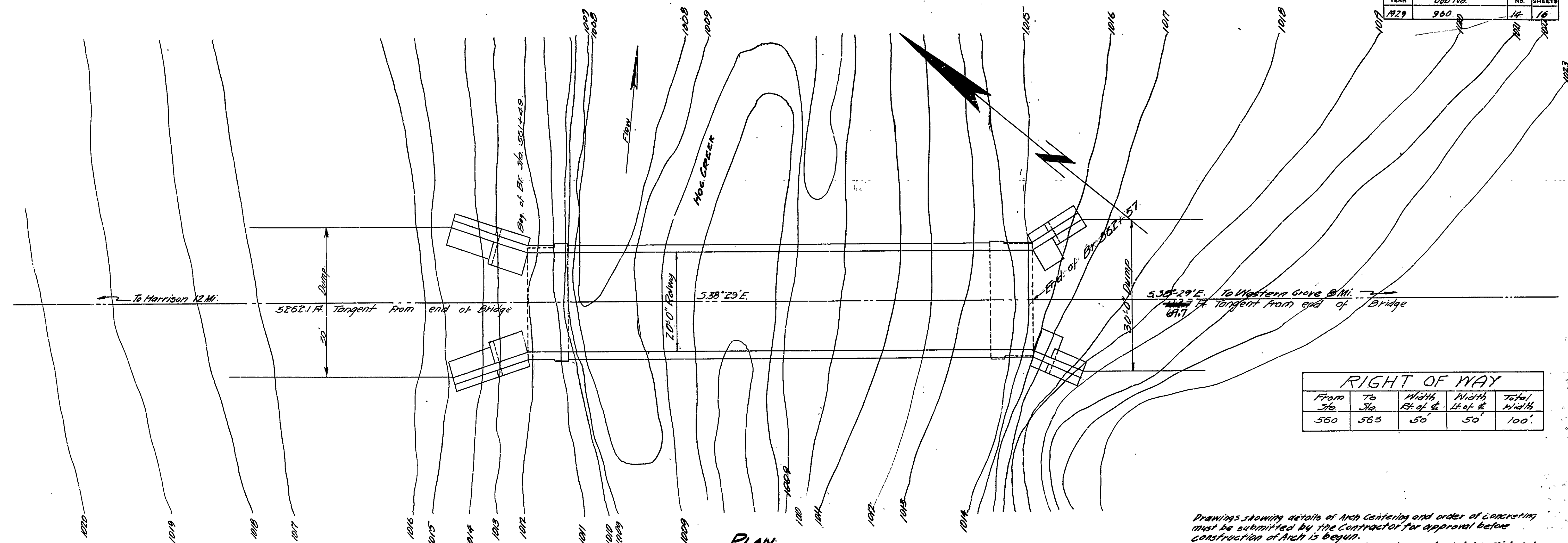
APPROVED
STATE HIGHWAY ENGINEER

N.B. Jones
BRIDGE ENGINEER

BRIDGES No. 869-871
872-873

DRAWING No. 1675

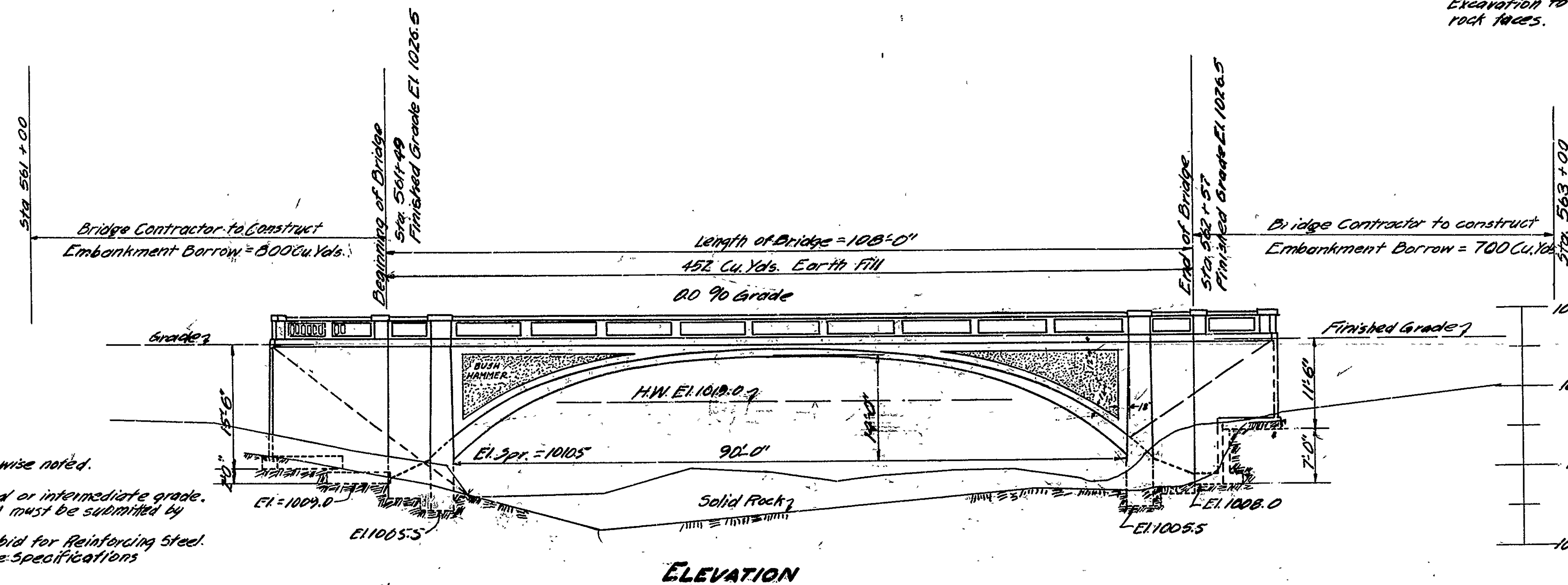
FISCAL YEAR	Job No.	SHEET No.	TOTAL SHEETS
1929	960	14	16



From Sta.	To Sta.	Width Ft. of E.	Width Ft. of W.	Total Width
560	563	50	50	100'

PLAN

Drawings showing details of Arch Centering and order of concreting must be submitted by the Contractor for approval before construction of Arch is begun. Arch Abutments to be carried at least two feet into solid rock. Excavation to be carried on in a manner to avoid shattering of rock faces.



ELEVATION

Item No.	Description	Quantity
13	Dry Excavation	118 Cu. Yds.
13	Wet Excavation	46 " "
13	Solid Rock Excavation	63 " "
17	Barren	1500 " "
54	Class 7 1/2 Concrete	218.16 " "
54	Class 5 Concrete	126.19 " "
55	Reinforcing Steel	37,637 Lbs.
74	Concrete Hand Rail	284 Lin. Ft.
5.P	Earth Fill in Arch	452 Cu. Yds.

Item	Description	Quantity
13	Dry Excavation for Strs.	112 Cu. Yds.
13	Wet Excavation for Strs.	0
13	Solid Rock Excavation for Strs.	159 " "
17	Barren	1500 " "
54	Class 7 1/2 Concrete	212 " "
54	Class 5 Concrete	123 " "
55	Reinforcing Steel	38,245 #
74	Concrete Hand Rail	284 Lin. Ft.
5.P	Earth Fill in Arch	475 Cu. Yds.

1010 @ 1760 participating F.A.P. Item.

PROPOSED LAYOUT BRIDGE OVER HOG CREEK BOONE COUNTY ROUTE 65 SEC. 2

ARKANSAS STATE HIGHWAY DEPARTMENT
LITTLE ROCK, ARK.

Drawn By: EDG Date: 6-15-29
Traced By: AMG Date: 6-17-29
Checked By: AMG Date: 6-27-29
Scale: 1/4" = 10'

BRIDGE NO. **873** DRAWING NO. **1687**

All exposed corners to have 1/4" chamfer unless otherwise noted.
Hand Rail to be Class 5 Concrete.
Reinforcing Steel to be deformed bars of structural or intermediate grade.
Shop List and Bending Diagrams of Reinforcing Steel must be submitted by Contractor before fabrication is begun.
Expansion Devices to be paid for at unit price bid for Reinforcing Steel.
Specifications: Arkansas Standard Road and Bridge Specifications adopted May 30, 1925.

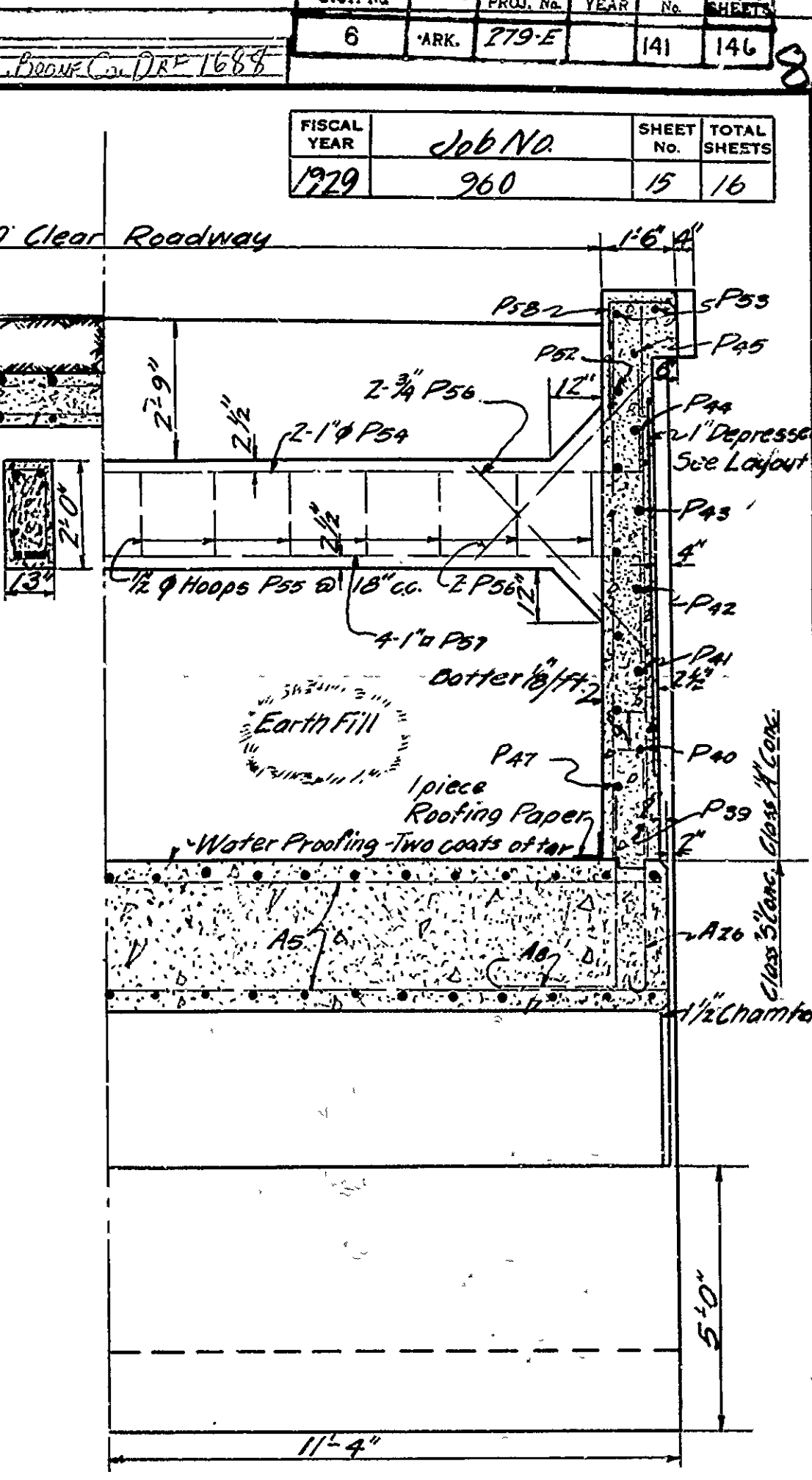
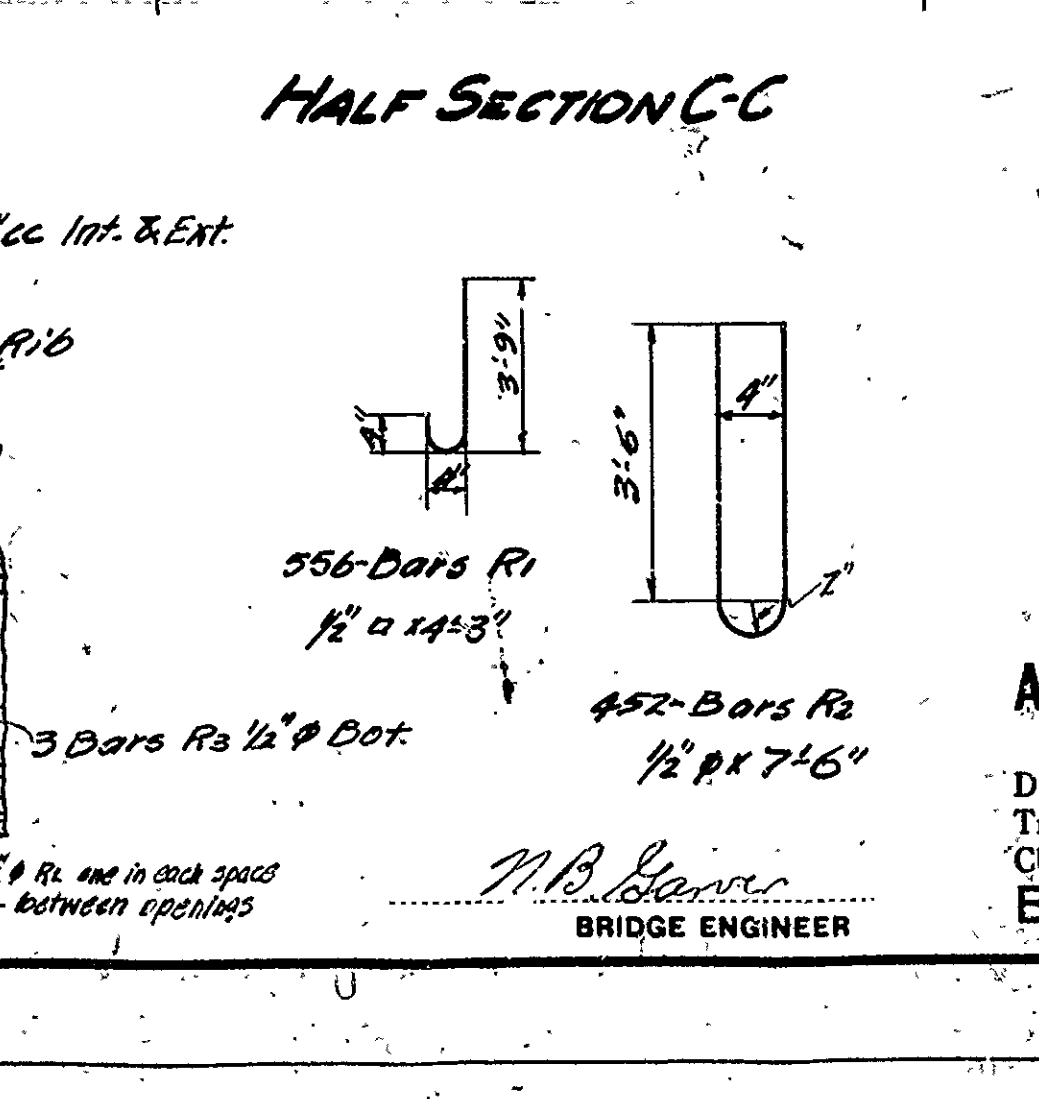
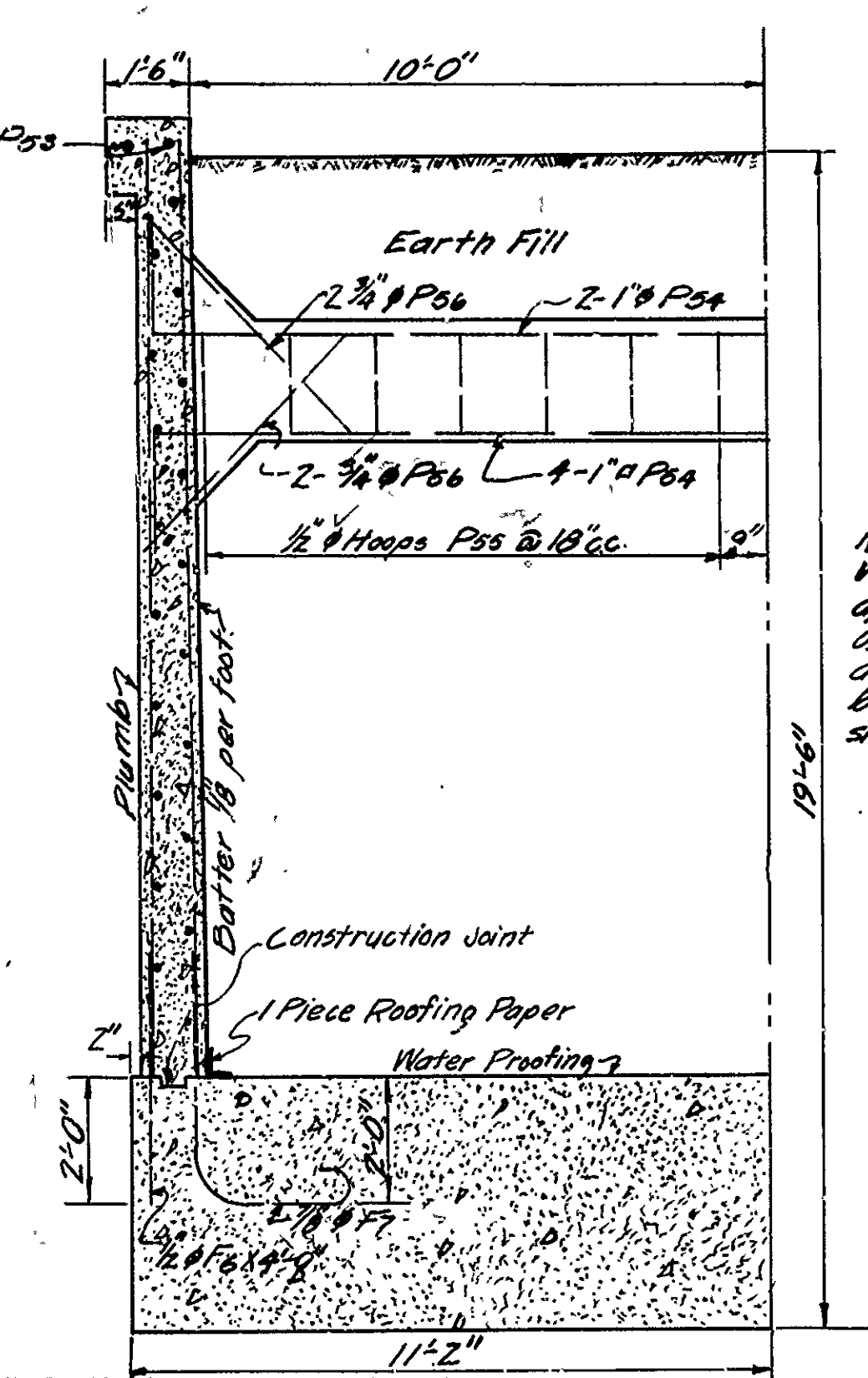
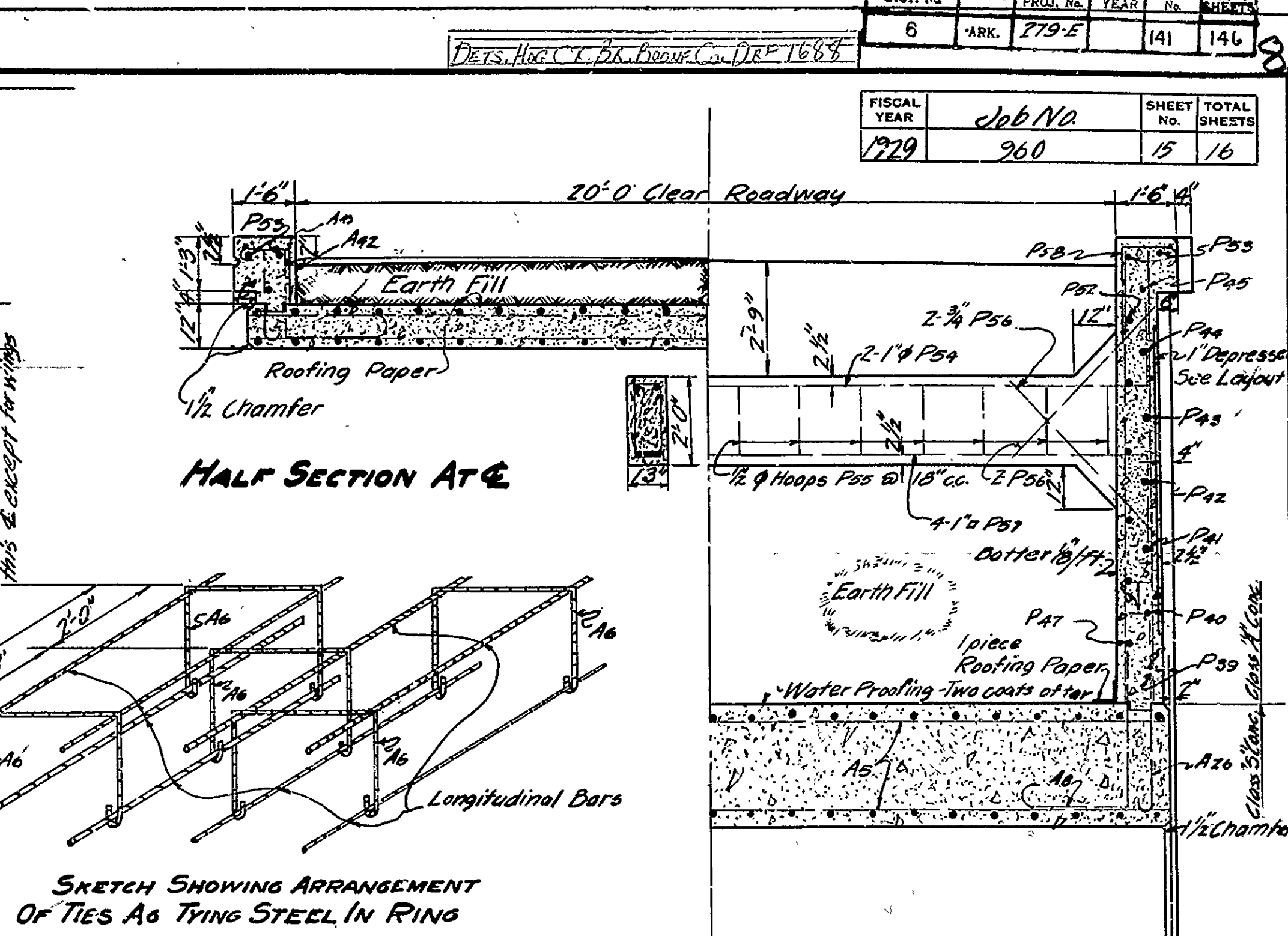
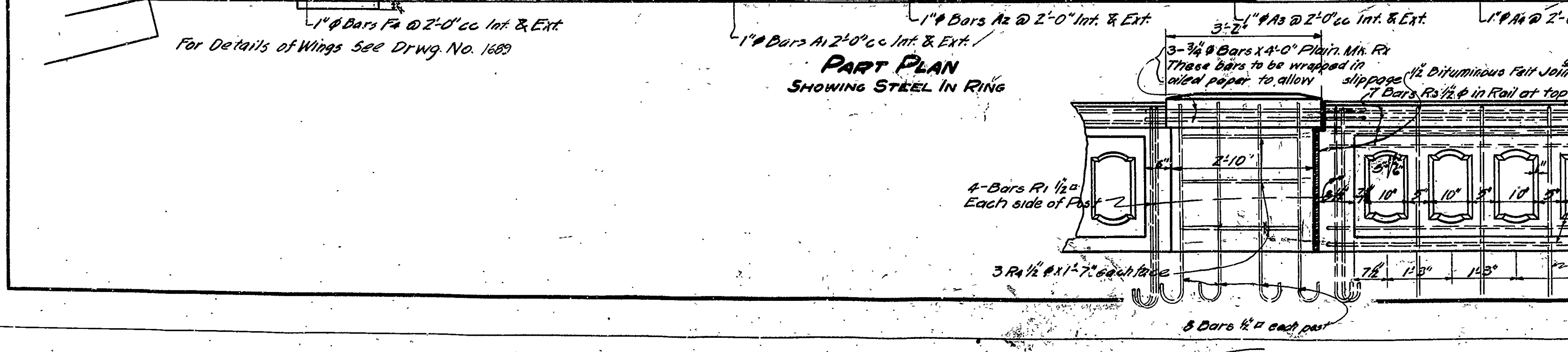
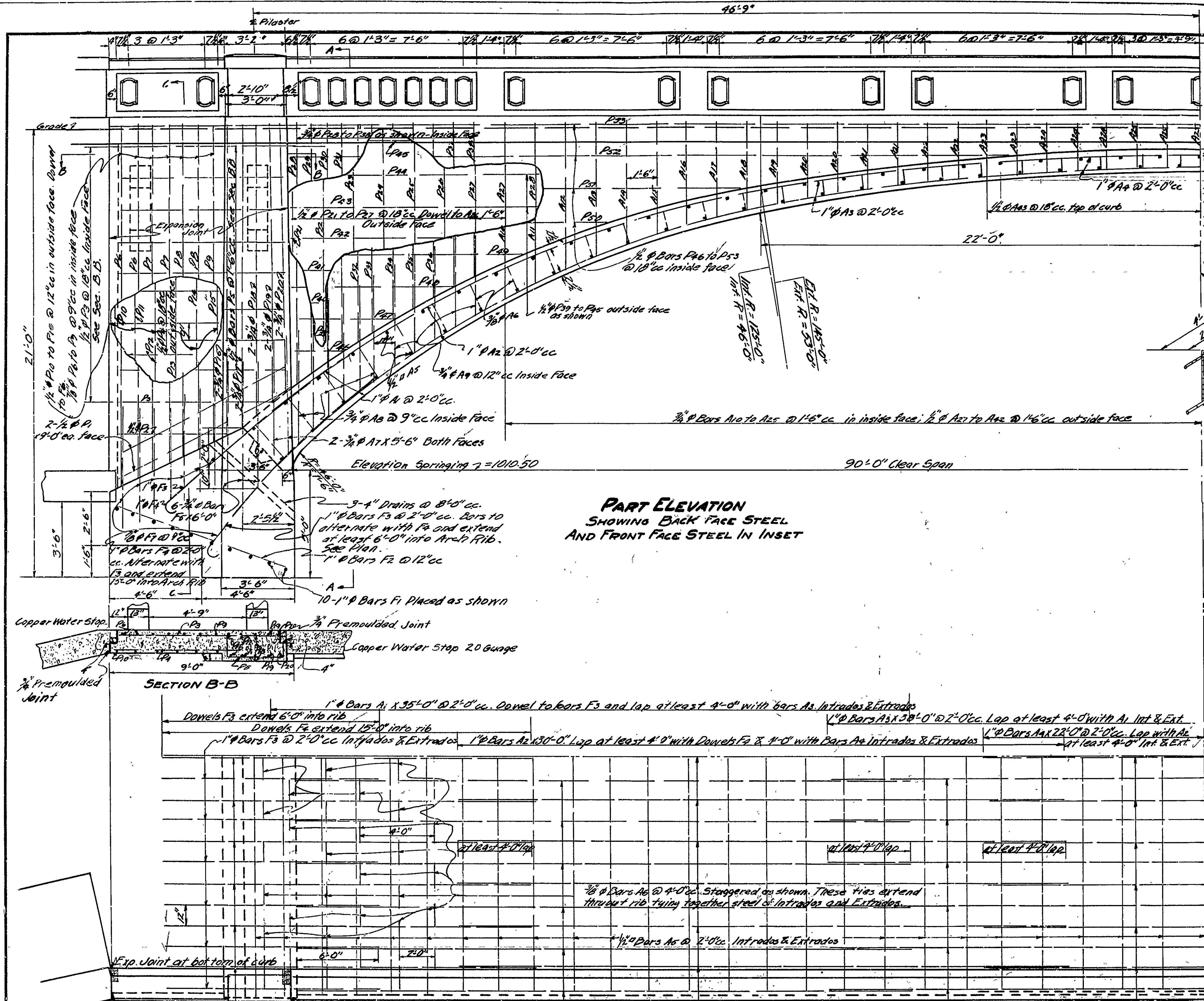
Drainage Area 5 1/2 Sq. Mi.
Mountainous Cleared

D.M. El. 1021.23
Nail in 1 1/2" Walnut
60' Ht. Sta. 560+00

Revised 5-28-32 quantities 510

M.B. Gannon
BRIDGE ENGINEER

FISCAL YEAR	Job No.	SHEET No.	TOTAL SHEETS
1929	960	15	16



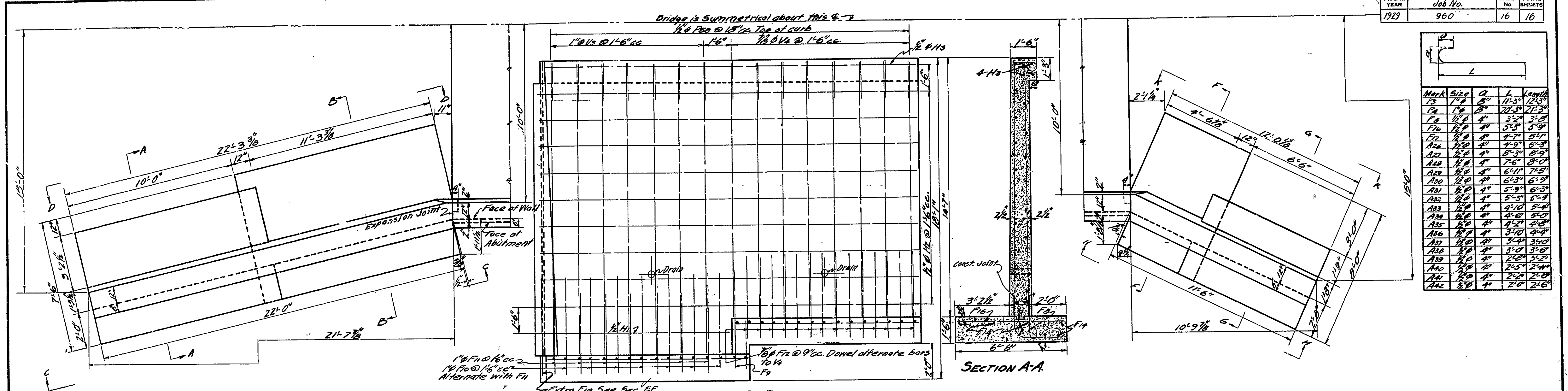
Note: Waterproofing to be retained for of A or B grade applied in two coats while hot, to Extrados top of Abutment and inside face of Spandrel Wall to a point 9" below top of curb. After one coat has been applied, place one piece of roofing paper as shown and then apply second coat of tar.

See Drawing No. 1687 & 1689 for General Notes and Bending Diagrams

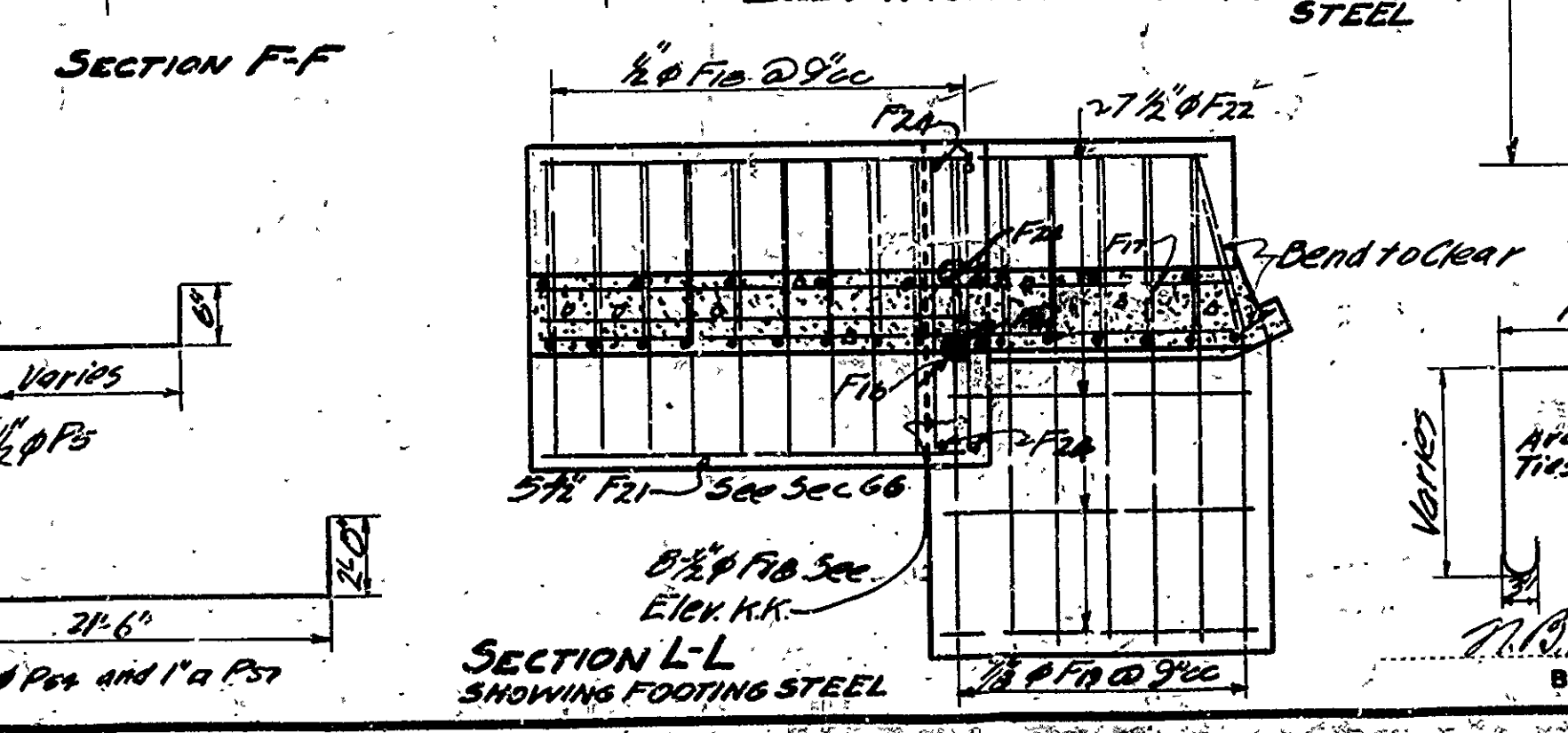
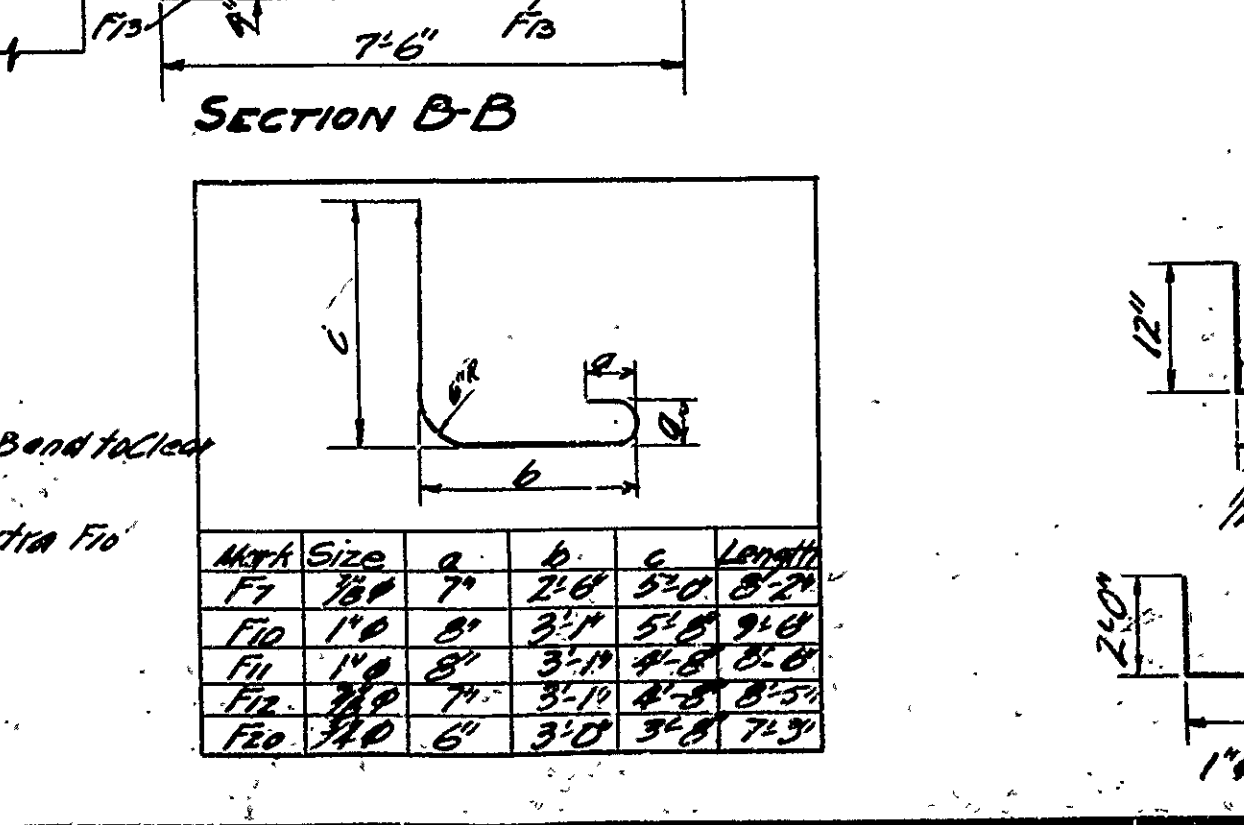
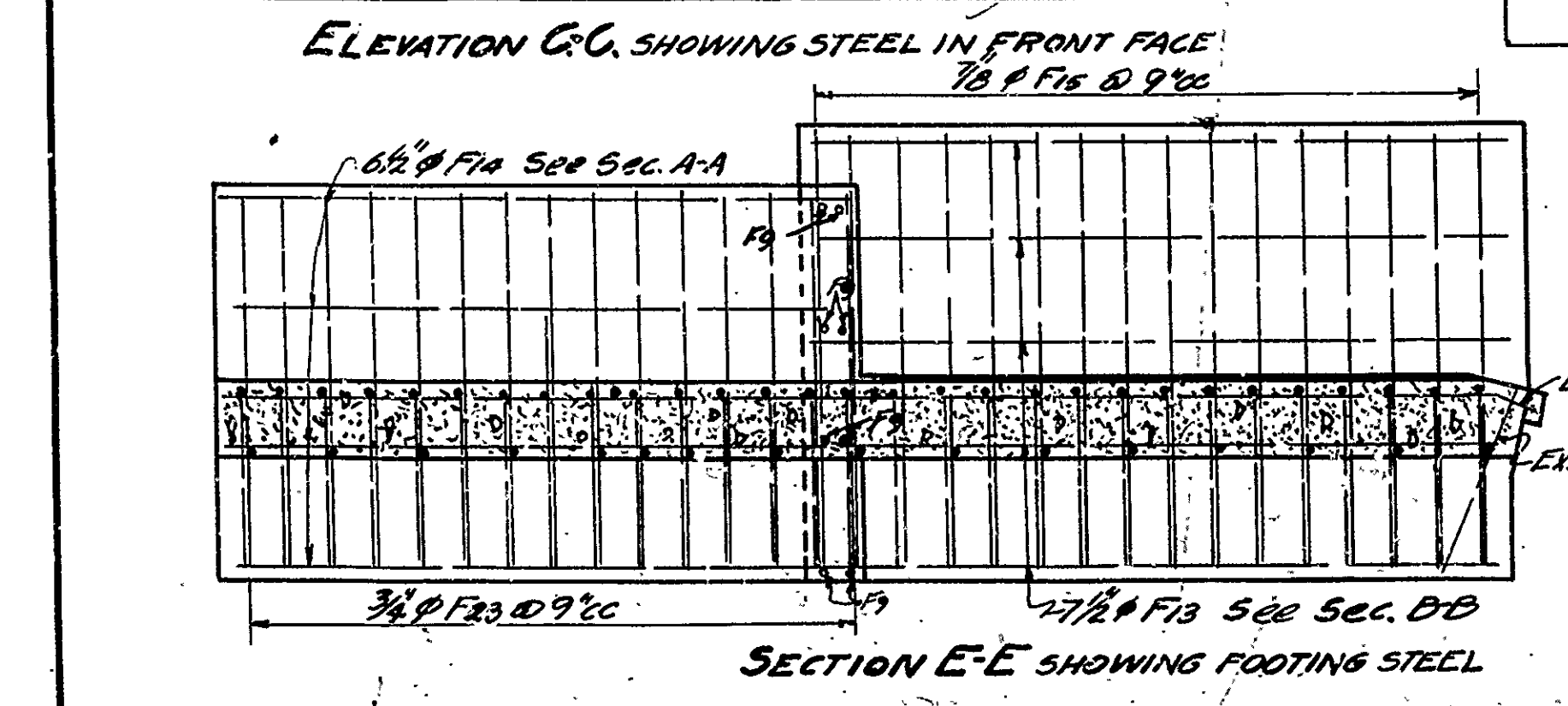
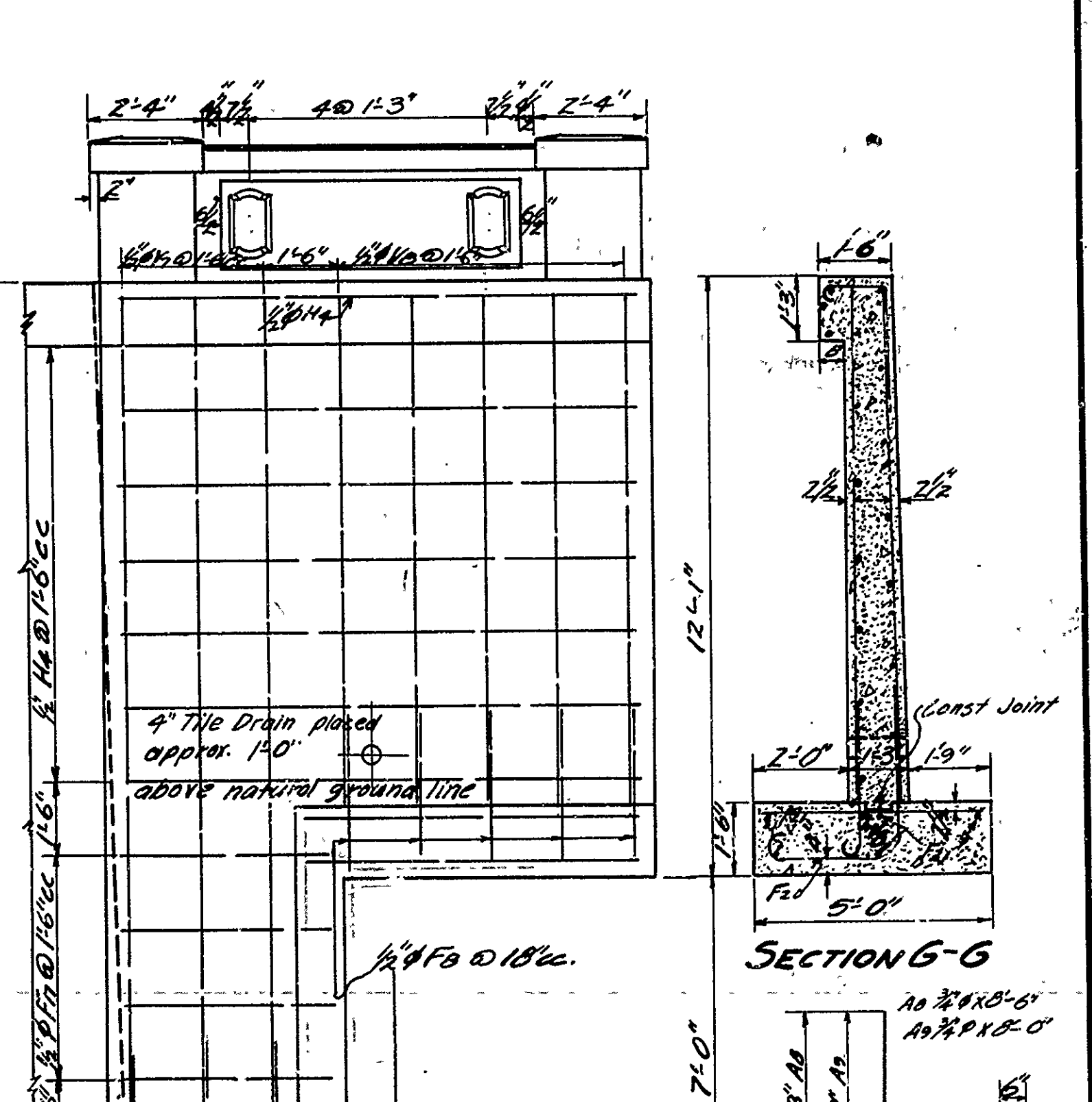
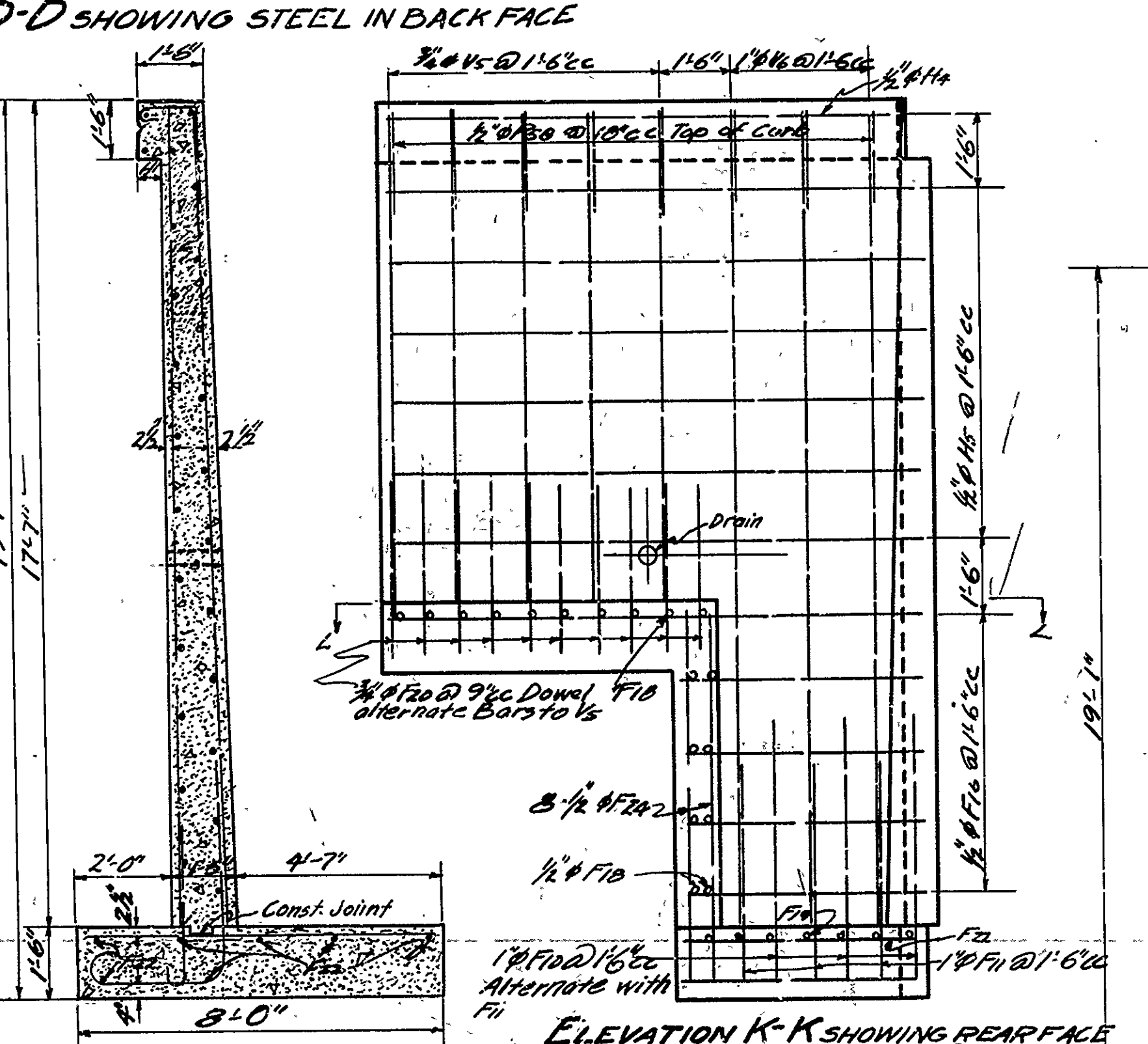
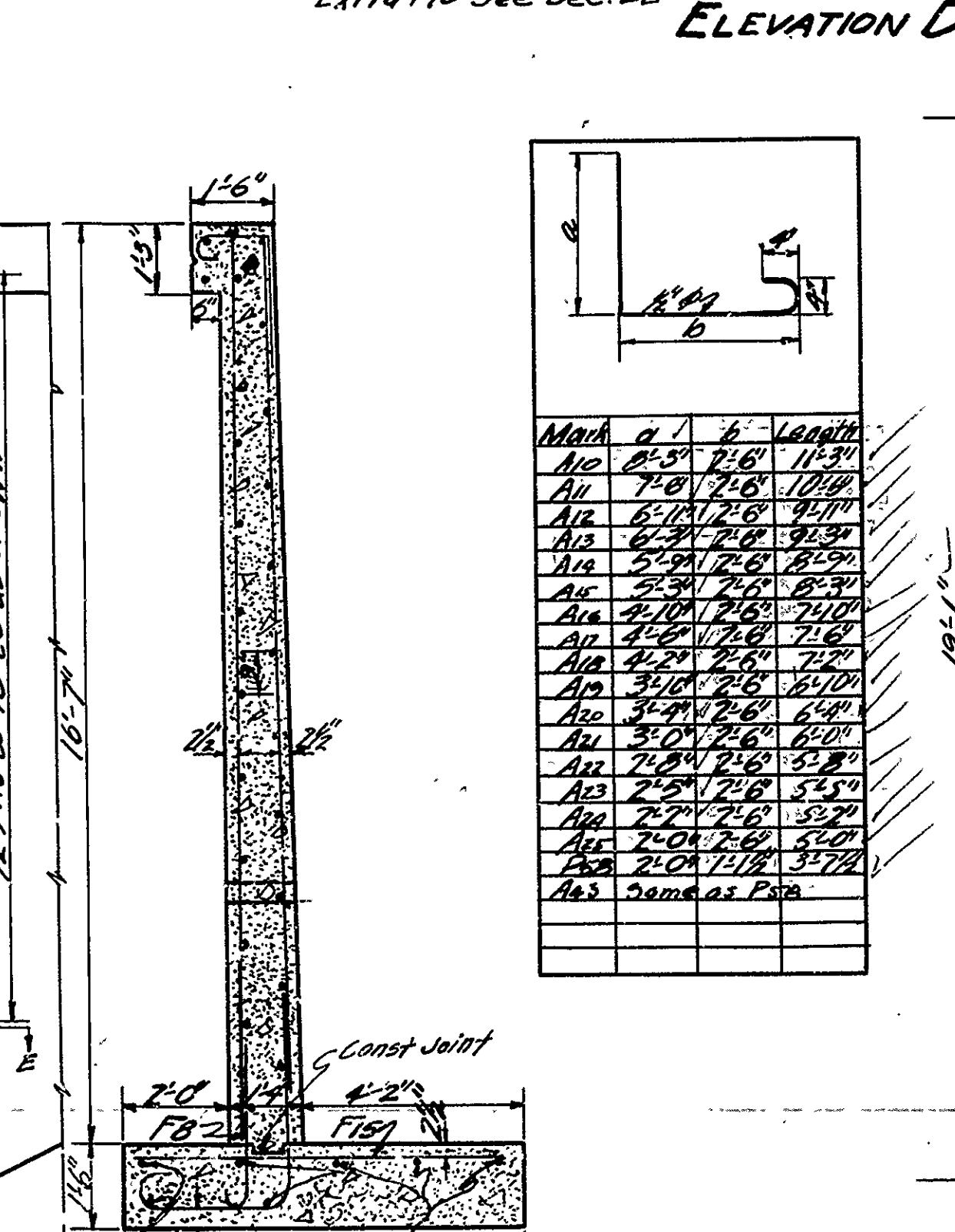
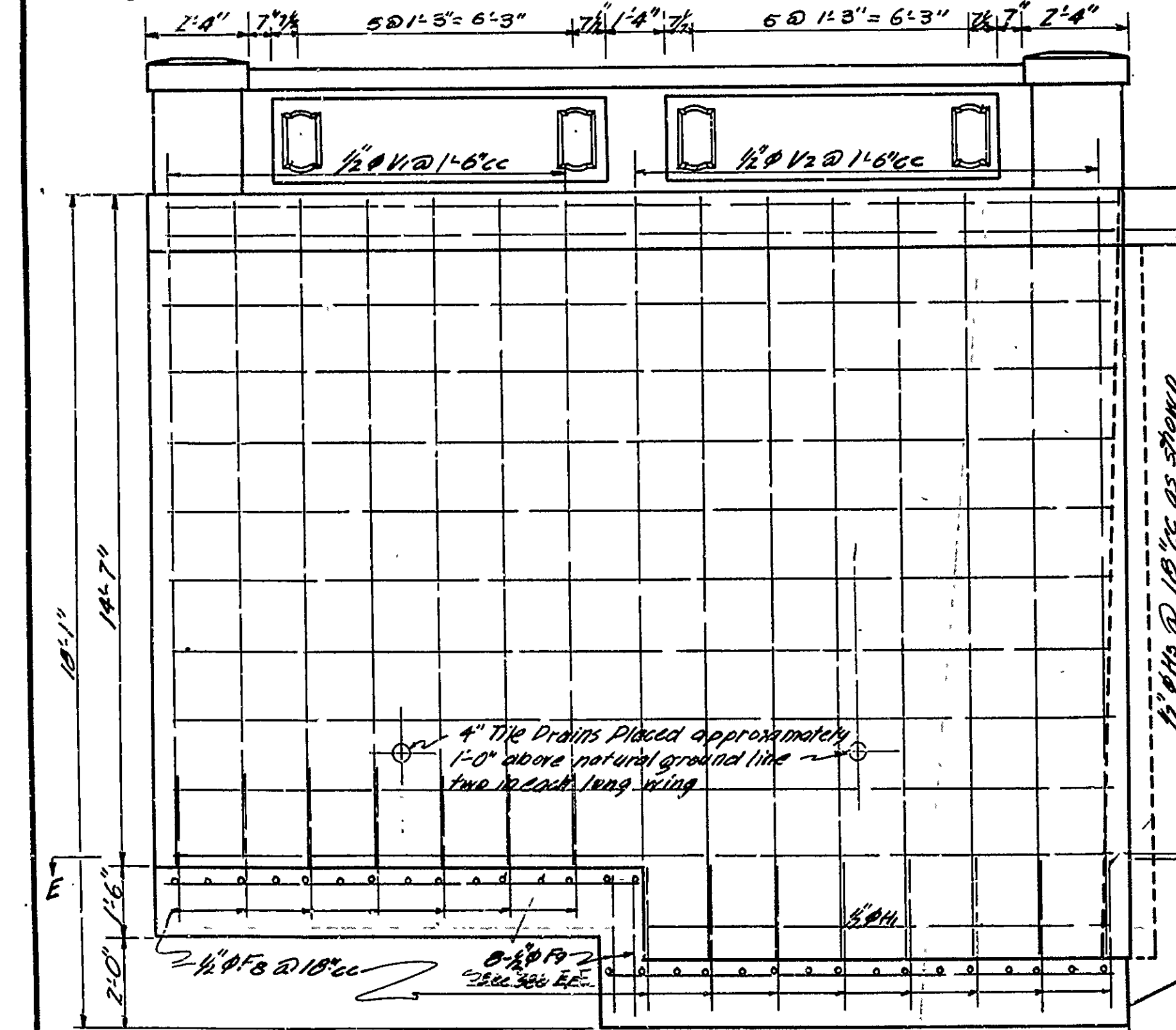
DETAILS
BRIDGE OVER HOG CREEK
BOONE COUNTY
ROUTE 65 SEC. 2
ARKANSAS STATE HIGHWAY DEPARTMENT
LITTLE ROCK, ARK.
 Drawn By: E.G.G. Date: 6-10-29
 Traced By: G.M.C. Date: 6-13-29
 Checked By: G.M.C. Date: 6-29-29
 Scale: 3/8" = 1 ft.
 BRIDGE No. 373 DRAWING No. 1688

M.B. [Signature]
 BRIDGE ENGINEER

FISCAL YEAR	Job No.	SHEET No.	TOTAL SHEETS
1929	960	16	16



Mark	Size	Q	L	Length
A23	1/2"	4"	11.3'	21.3'
A24	1/2"	4"	20.3'	21.3'
A25	1/2"	4"	3.7'	5.1'
A26	1/2"	4"	5.3'	5.9'
A27	1/2"	4"	4.7'	5.1'
A28	1/2"	4"	4.9'	5.3'
A29	1/2"	4"	5.3'	5.9'
A30	1/2"	4"	7.6'	8.0'
A31	1/2"	4"	6.1'	7.5'
A32	1/2"	4"	6.3'	6.9'
A33	1/2"	4"	5.3'	5.9'
A34	1/2"	4"	4.1'	5.4'
A35	1/2"	4"	4.6'	5.0'
A36	1/2"	4"	4.2'	4.8'
A37	1/2"	4"	3.1'	4.4'
A38	1/2"	4"	3.4'	3.9'
A39	1/2"	4"	3.0'	3.6'
A40	1/2"	4"	2.8'	3.2'
A41	1/2"	4"	2.5'	2.9'
A42	1/2"	4"	2.6'	2.6'



**DETAILS OF WING WALLS
FOR BRIDGE OVER HOG CREEK
BOONE COUNTY
ROUTE 85 SEC. 2**

**ARKANSAS STATE HIGHWAY DEPARTMENT
LITTLE ROCK, ARK.**

Drawn By: *E.O.G.* Date: 6-22-29
 Traced By: *A.M.C.* Date: 6-17-29
 Checked By: *A.M.C.* Date: 6-24-29

Scale: 3/8" = 1 ft.
BRIDGE NO. 873 **DRAWING NO. 1689**

E.O.G.
BRIDGE ENGINEER