

STATE OF ARKANSAS
STATE HIGHWAY DEPARTMENT

FISCAL YEAR	JOB NO.	SHEET NO.	TOTAL SHEETS
1929	677	1	16

FED. ROAD DIST. No.	STATE	FISCAL YEAR	FISCAL YEAR	SHEET No.	TOTAL SHEETS
6	ARK.	294-B	1	1	16

PLAN OF PROPOSED BRIDGES
ON
THE ROYAL-MONTG'Y COUNTY LINE RD.
GARLAND COUNTY

INDEX OF SHEETS

Sheet No. 1	Drawg No. 1526	Title Sheet
" 2	" 1527	Layout of Br's No. 964 & 965
" 3	" 1528	Details of Substructure for Br. No. 964
" 4	" 1003	" " Standard 35' R.C.D. Gird. Span with 20' Roadway
" 5	" 1529	Details of Substructure for Br. No. 965
" 6	" 1530	" " " " " " " "
" 7	" 1002	" " Standard 30' R.C.D. Gird. Span, 20' Rdwy
" 8	" 1531	Layout of Bridge No. 967
" 9	" 1532	Details of Abutment No. 1 for Br. No. 967
" 10	" 1533	" " " " 1 & Piers for Br. No. 967
" 11	" 1534	" " " " 2 for Br. No. 967
" 12	" 1093	" " Stand. 80' Steel Truss Span, 20' Rdwy.
" 13	" 1004	" " 40' R.C.D. Gird. Span " "
" 14	" 1535	Layout of Br. No. 968
" 15	" 1536	Details of Abut. No. 1 for Br. No. 968
" 16	" 1537	" " " " 2 & Bents for Bridge No. 968

ROUTE 6 SEC. 4

JOB NO 677

EMERGENCY FINANCIAL FEDERAL AID PROJECT NO. 294-B

QUANTITIES

Item No. 13	Dry Excav. for Struc's	725.96	Cu. Yds.
" 13	Wet " " "	260.49	" "
" 13	Rock " " "	152.73	" "
" *17	Borrow	2150.0	" "
" 54	Class "A" Concrete	500.19	" "
" 54	" "S" "	355.64	" "
" 55	Reinf'g Steel	128,378.0	Lbs.
" 56	Struc'l Steel (Trusses)	122,609.0	" "
" 57	Dry Rubble Masonry	11.44	Cu. Yds.
" 74	Concrete Railing	564.91	Lin. Ft.

* Non-participating in Federal Aid

Specifications approved by Chief, Bureau of Public Roads, September 28, 1925, and adopted by State Highway Commission May 30, 1925, with approved revisions and Special Provisions as follows:

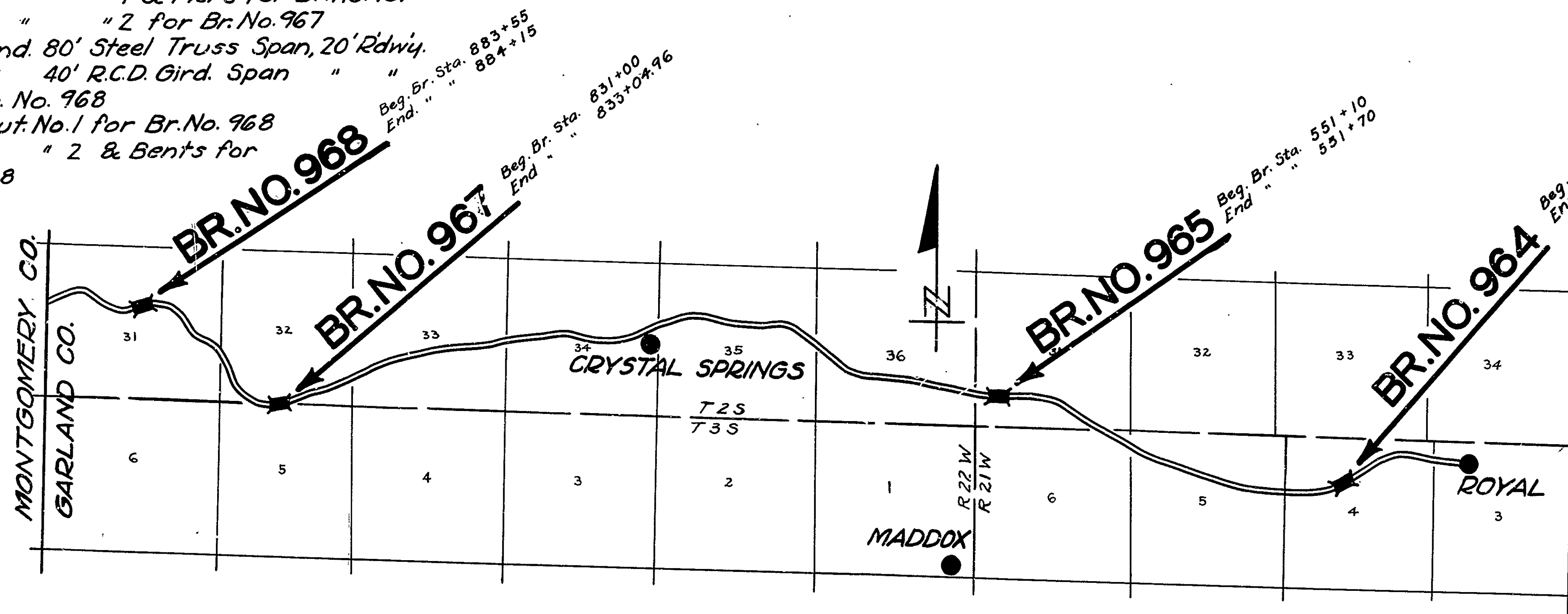
SPECIAL PROVISIONS

Revisions to Paragraph 172-173

Specifications approved by Chief, Bureau of Public Roads, September 28, 1925, and adopted by State Highway Commission May 30, 1925, with approved revisions and Special Provisions as follows:

REVISIONS

Pamphlet A	Revised Sept. 1, 1928	Approved June 1, 1929
B		
C		
D	July 1, 1928	Nov. 24, 1928
E		
F		
G		
H		
I		
J	Jan. 1, 1929	June 1, 1929
K		
L	Jan. 1, 1929	June 1, 1929



LAYOUT

LENGTH OF JOB NO. 677 = 429'-11 1/2" = 0.081 MI
GROSS LENGTH OF PROJECT = 429'-11 1/2" = 0.081 "
NET " " " = 429'-11 1/2" = 0.081 "

Revised E.A.P. No. 6-13-32
Quantities

W. B. Hancock
BRIDGE ENGINEER

BRIDGE NO. 964, 965, 967 & 968 DRAWING NO. 1526

APPROVED _____
COMMISSIONER - STATE LANDS, HIGHWAYS AND IMPROVEMENTS

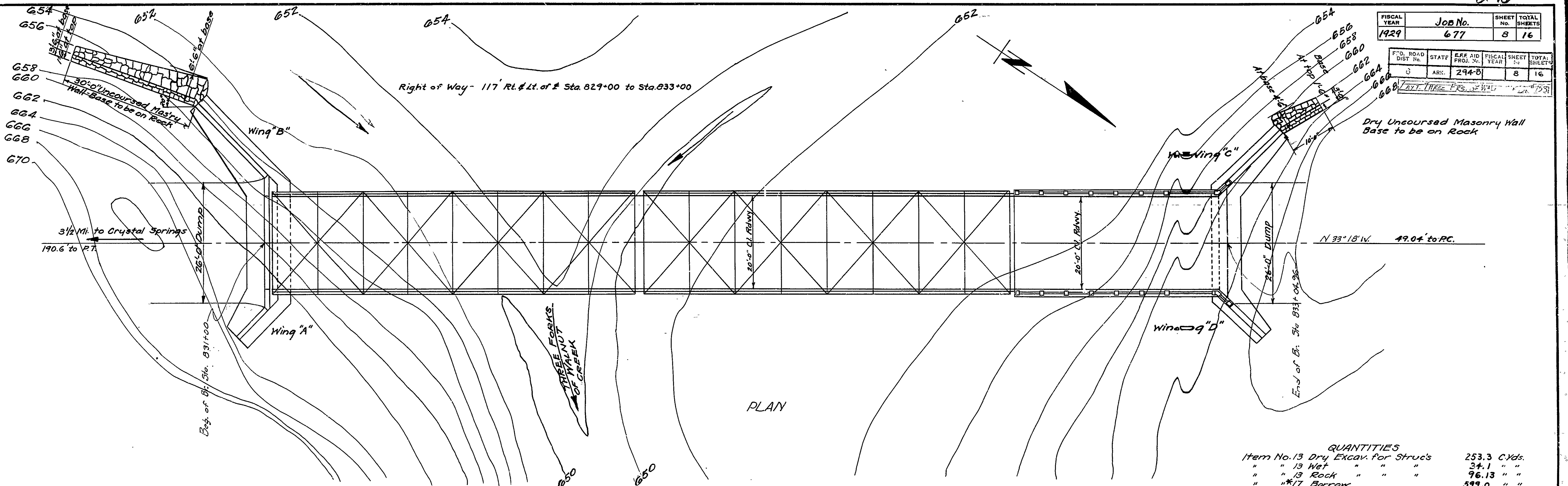
APPROVED _____
STATE HIGHWAY ENGINEER

RECOMMENDED FOR APPROVAL _____
DISTRICT ENGINEER - U. S. BUREAU OF PUBLIC ROADS

RECOMMENDED FOR APPROVAL _____
CHIEF ENGINEER - U. S. BUREAU OF PUBLIC ROADS

APPROVED _____
DIRECTOR - U. S. BUREAU OF PUBLIC ROADS

FISCAL YEAR	1929	JOB No.	677	SHEET No.	8	TOTAL SHEETS	16
F.T.D. ROAD DIST. No.	3	STATE	ARK.	PROJ. No.	294-B	FISCAL YEAR	1929
SHEET TOTALS							16

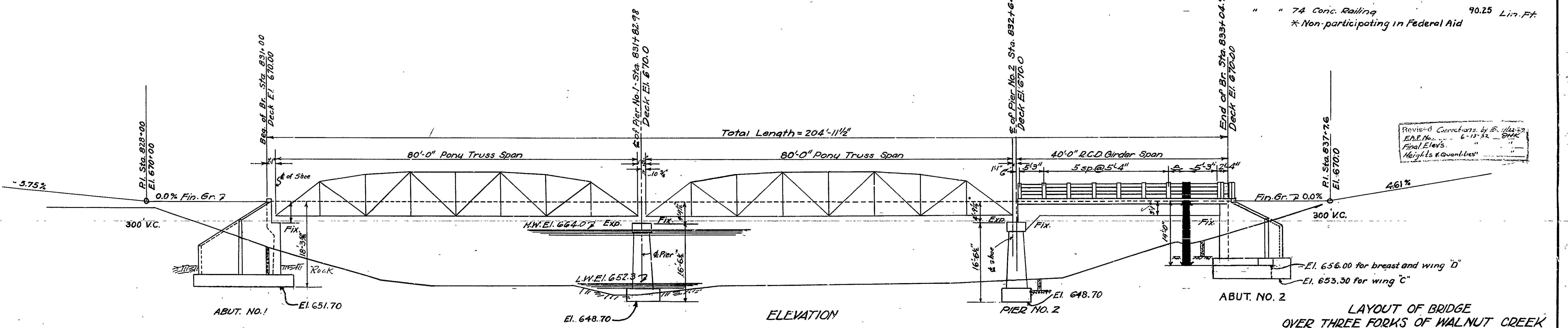


PLAN

QUANTITIES

Item No. 13 Dry Excav. for Struct.	253.3	C.Yds.
" " 13 Wet " " "	34.1	" "
" " 13 Rock " " "	96.13	" "
" " *17 Borrow " " "	599.0	" "
" " 54 Class A Conc.	223.88	" "
" " 54 " "S" "	153.75	" "
" " 55 Reinf'g Steel	47568.0	Lbs.
" " 56 Struct' (Truss)	122,609.0	" "
" " 74 Conc. Railing	90.25	Lin. Ft.

* Non-participating in Federal Aid



ELEVATION

All footings founded on Sound Rock.

Drainage Area = 1925 Sq. Mi. Mountainous, Wooded
B.M. El. 654.24 in 8" Ash 85' Lt. Sta. 831+00

For Details of 80' Steel Truss Span, See Drawing No. 1093

" " 40' R.C.D. Girder	" "	" "	1004
" " Abut. No. 1	" "	" "	1532
" " Footing Abut. No. 1 & Piers	" "	" "	1533
" " Abut. No. 2	" "	" "	1534

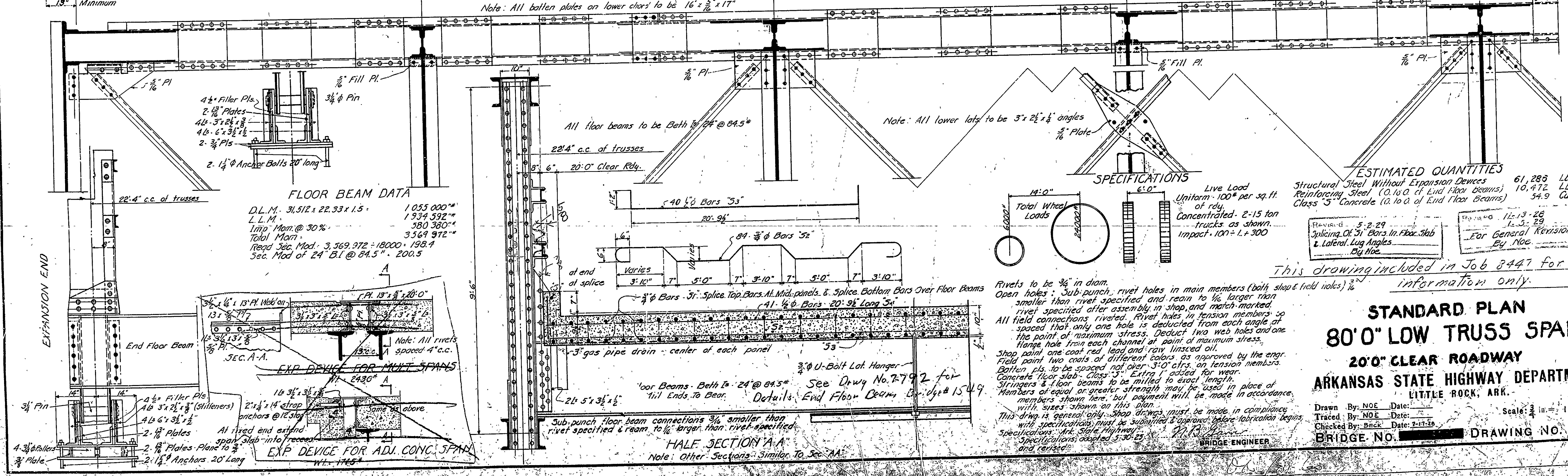
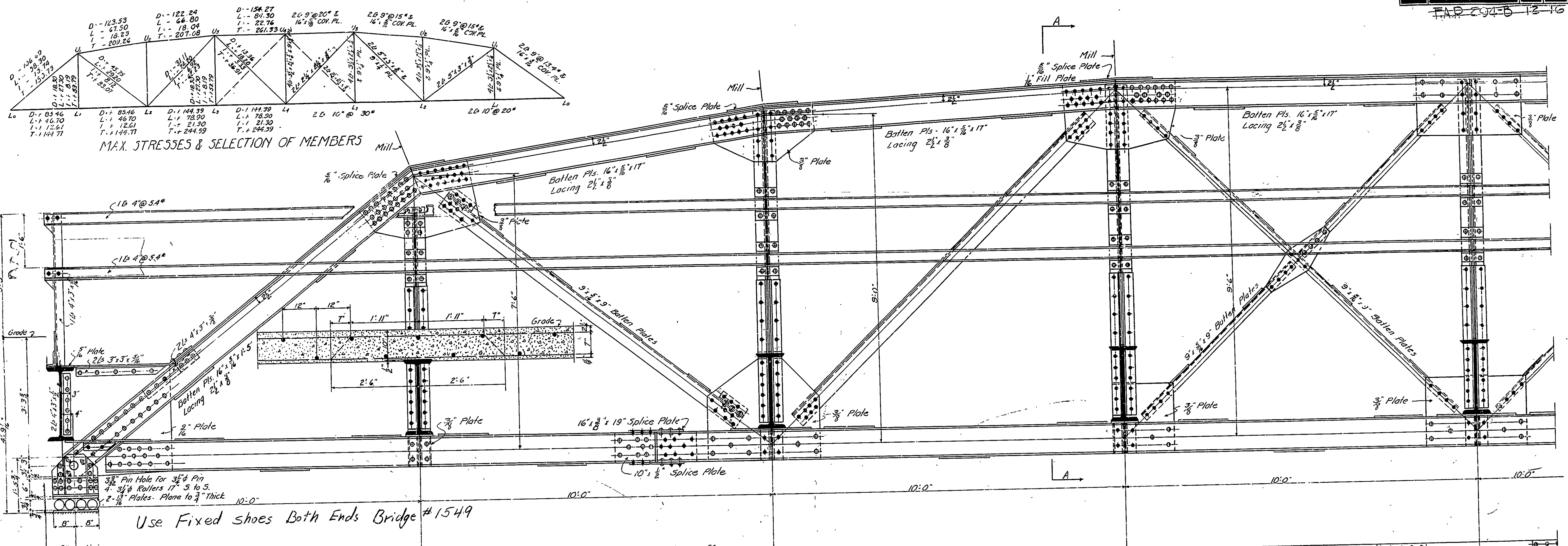
Revised Contract by No. 116-29
 E.A.P. No. 6-13-29
 Final Elev's
 Heights & Quantities

LAYOUT OF BRIDGE
 OVER THREE FORKS OF WALNUT CREEK
 ROYAL-MONTGOMERY CO. LINE R'D.
 GARLAND COUNTY
 ROUTE 6 SEC. 4

ARKANSAS STATE HIGHWAY DEPARTMENT
 LITTLE ROCK, ARK.

Drawn By: J.H. Date: 4-18-29
 Traced By: J.H. Date: 4-18-29
 Checked By: C.A.D. Date: 4-18-29
 BRIDGE NO. 967
 Scale: 1 in. = 10 ft.
 DRAWING NO. 1531

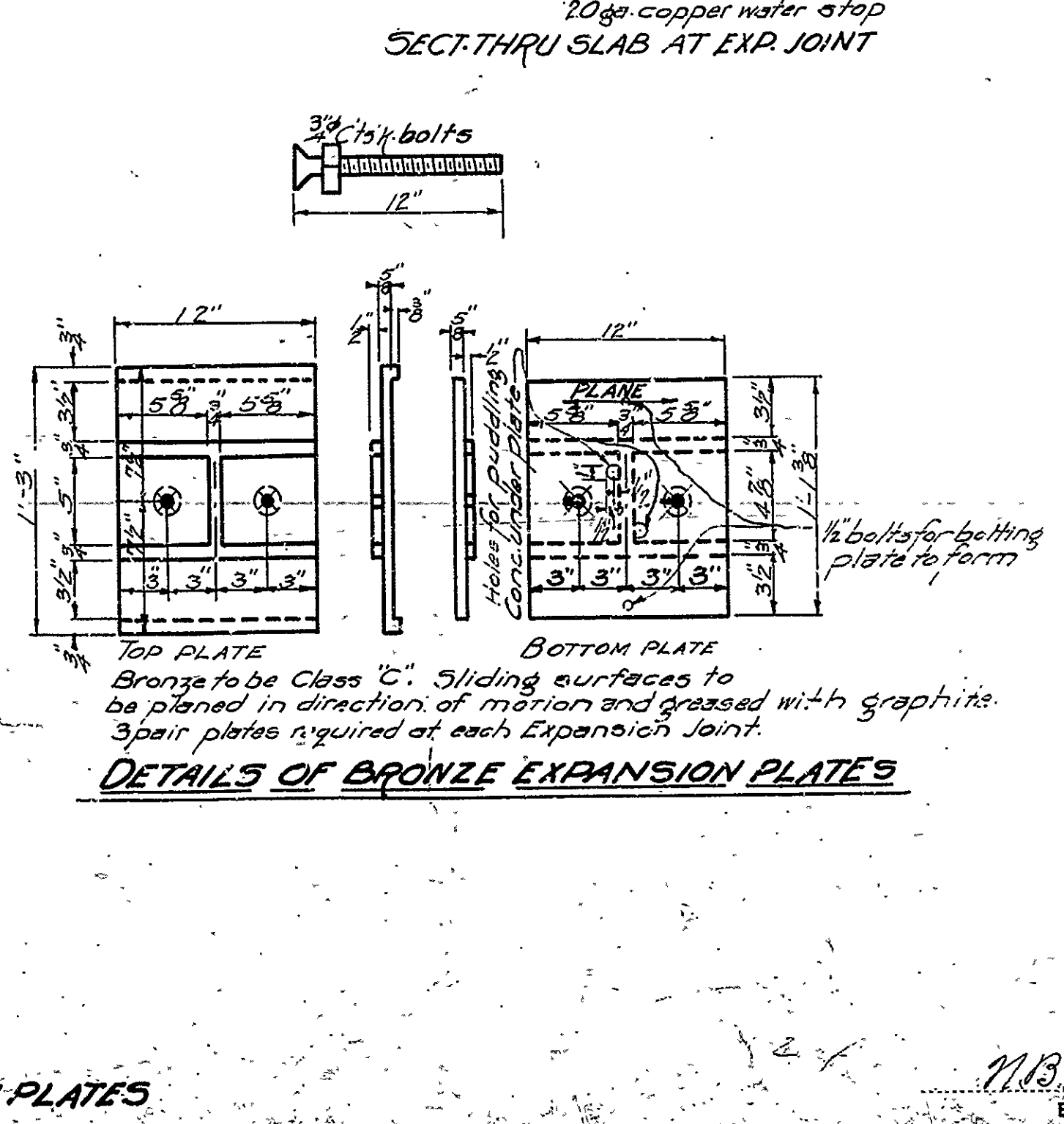
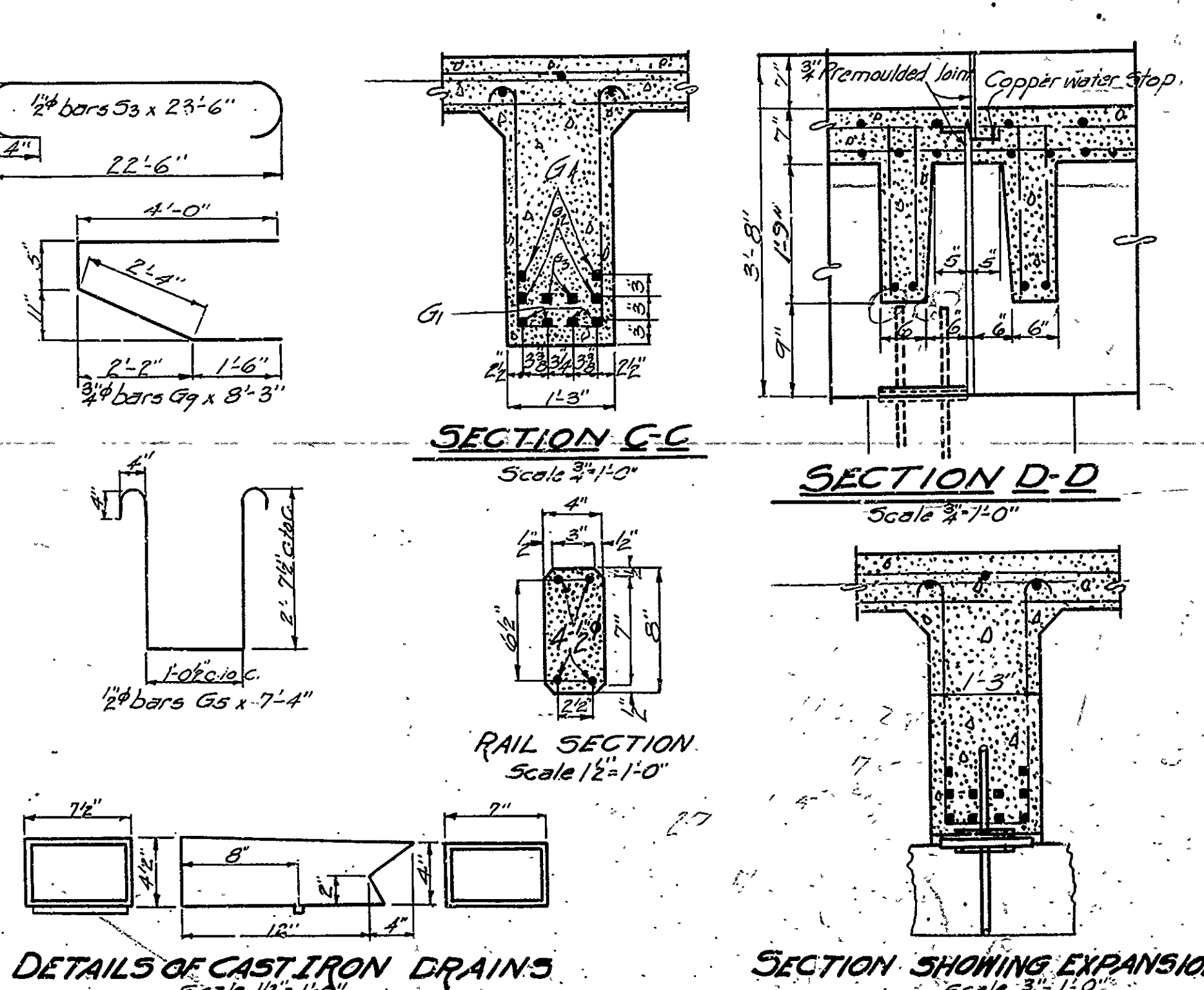
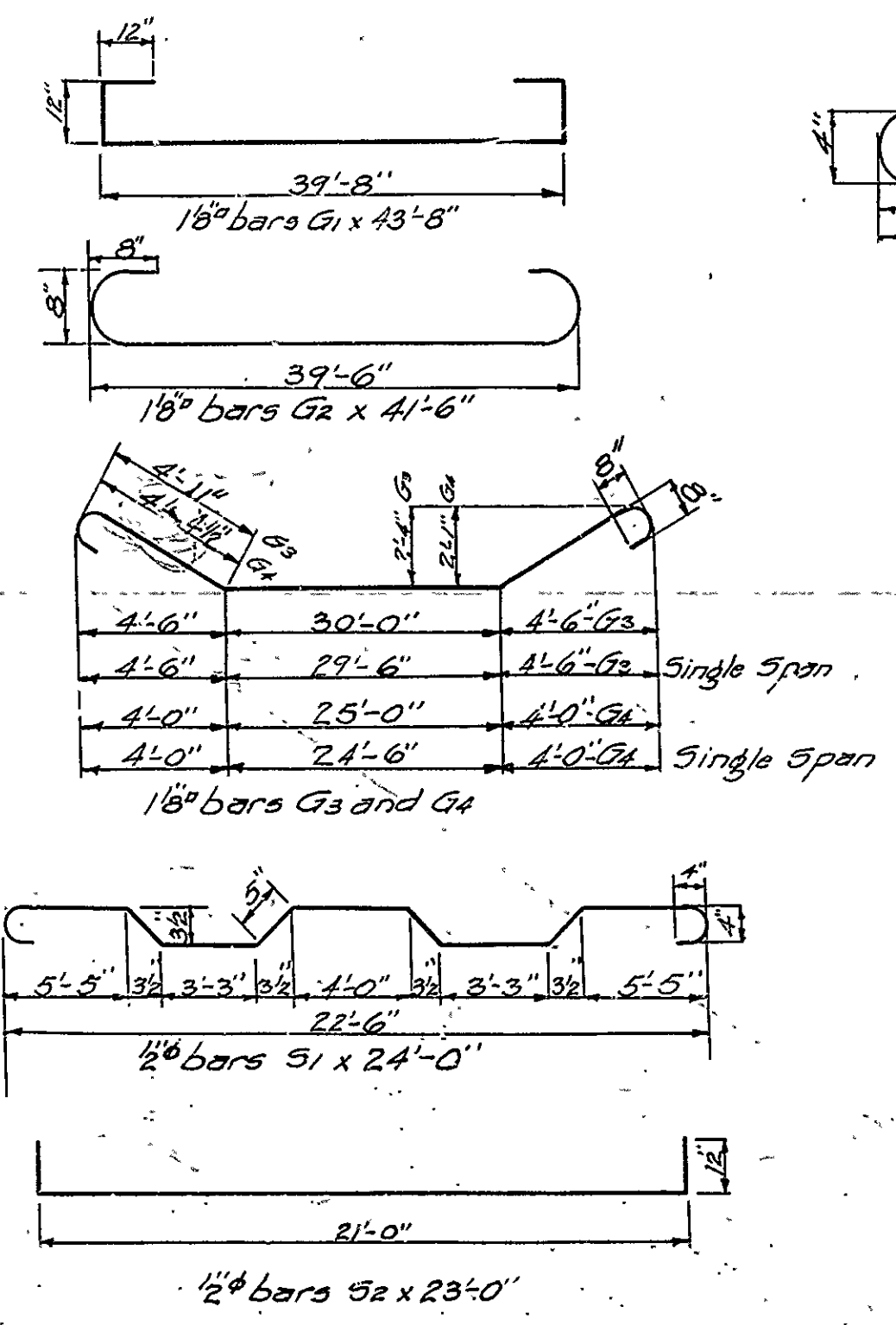
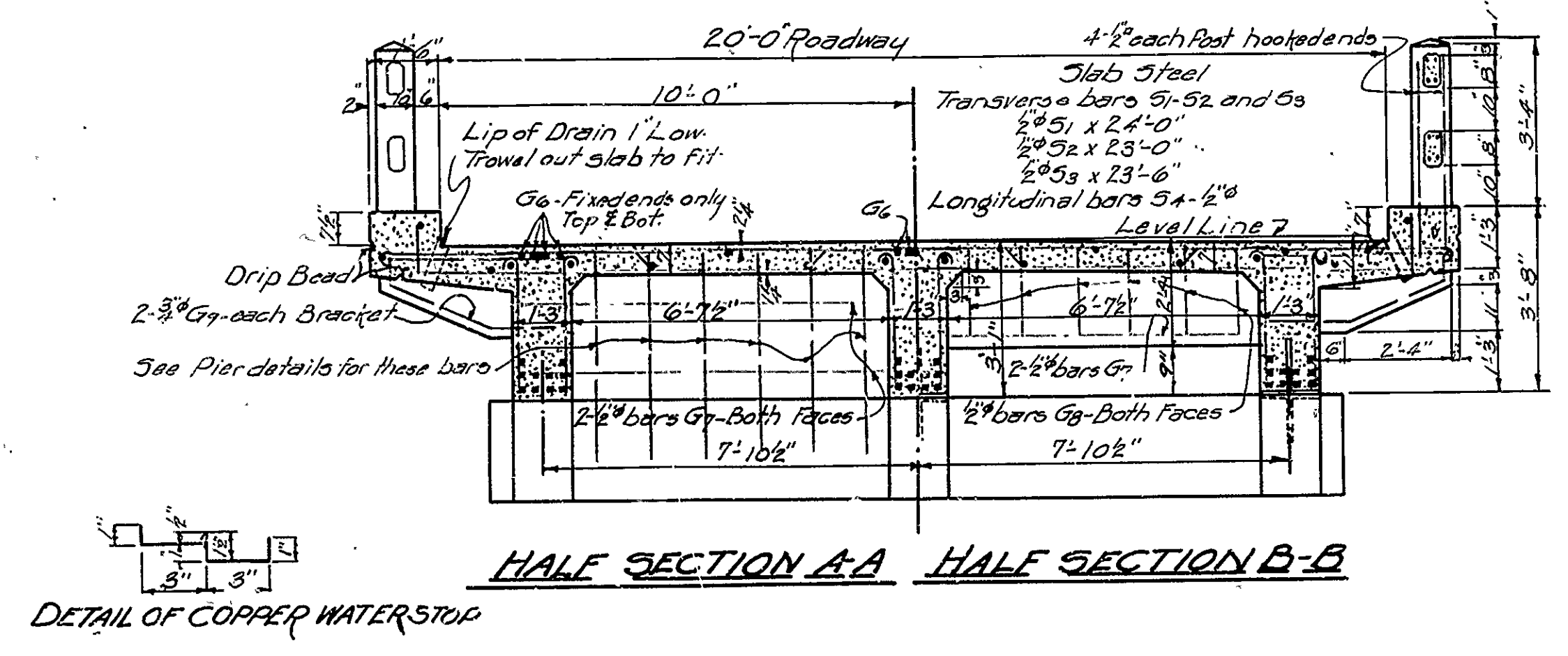
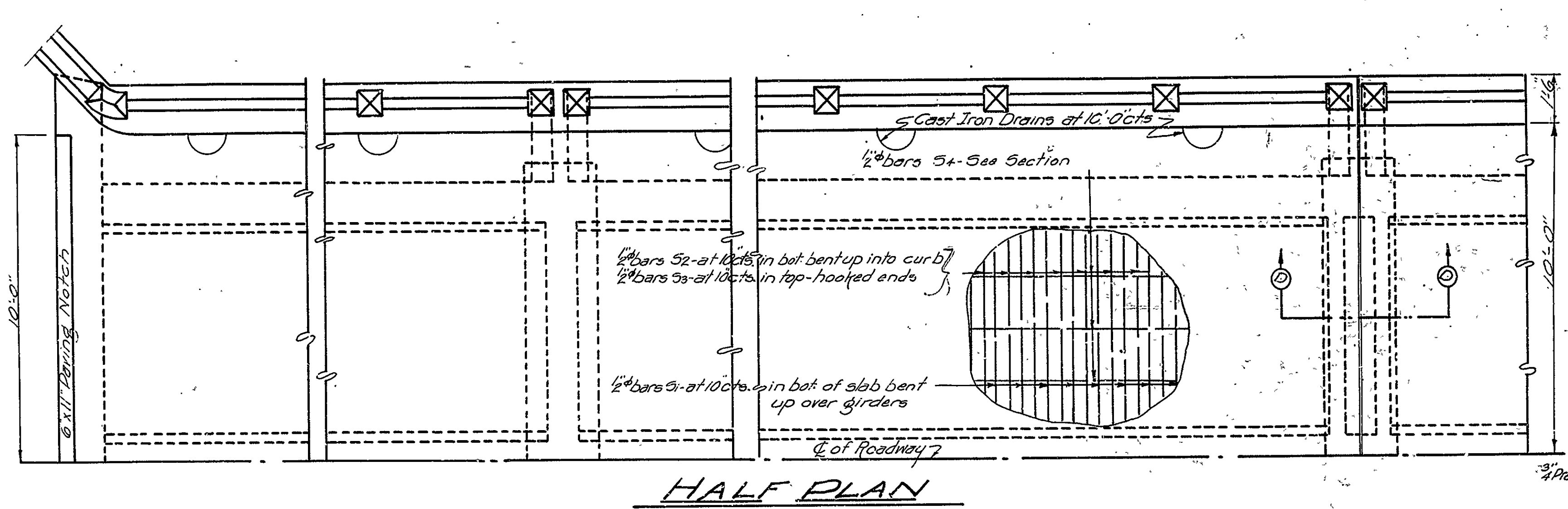
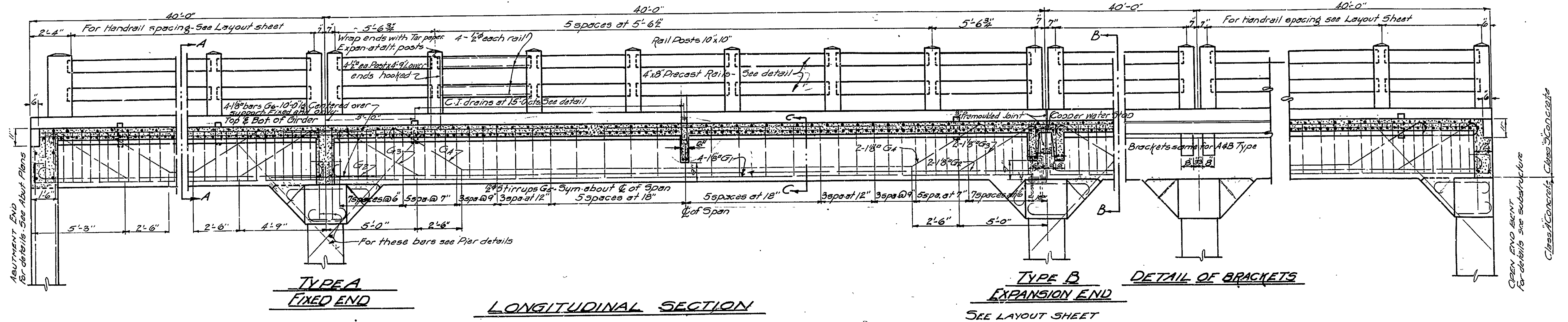
W.B. LITTLE
 BRIDGE ENGINEER



STANDARD PLAN
80'0" LOW TRUSS SPAN
20'0" CLEAR ROADWAY
ARKANSAS STATE HIGHWAY DEPARTMENT
 LITTLE ROCK, ARK.

Drawn By: NOE Date: Scale: 3/8" = 1 ft.
 Traced By: NOE Date:
 Checked By: Beck Date: 7-17-28
 BRIDGE NO. DRAWING NO. 1093

This drawing included in Job 8447 for information only.



GENERAL NOTE
All exposed corners to have 3/4" chamfer unless otherwise noted.
Precast Concrete Handrails to be 1:2:4 mix. Max aggregate 3/8".
Reinforcing Steel to be deformed bars of Structural or Intermediate Grade. Shop List and Bending Diagrams of Steel must be submitted by the Contractor before fabrication is begun.
Roadway Drains and Expansion devices to be paid for at unit price bid for Reinforcing Steel.
Concrete above top of Column Caps except Handrails to be Class 5. Below this point Class A.
All Concrete to be poured in the dry.
SPECIFICATIONS TO ARKANSAS STANDARD ROAD AND BRIDGE SPECIFICATIONS ADOPTED MAY 30-1925 AND REVISED.

Revised 3-34 Bars added
Bars G6 added to bar of
Girders. Exp. Pl. Bolts changed
9/24/29 J.D.

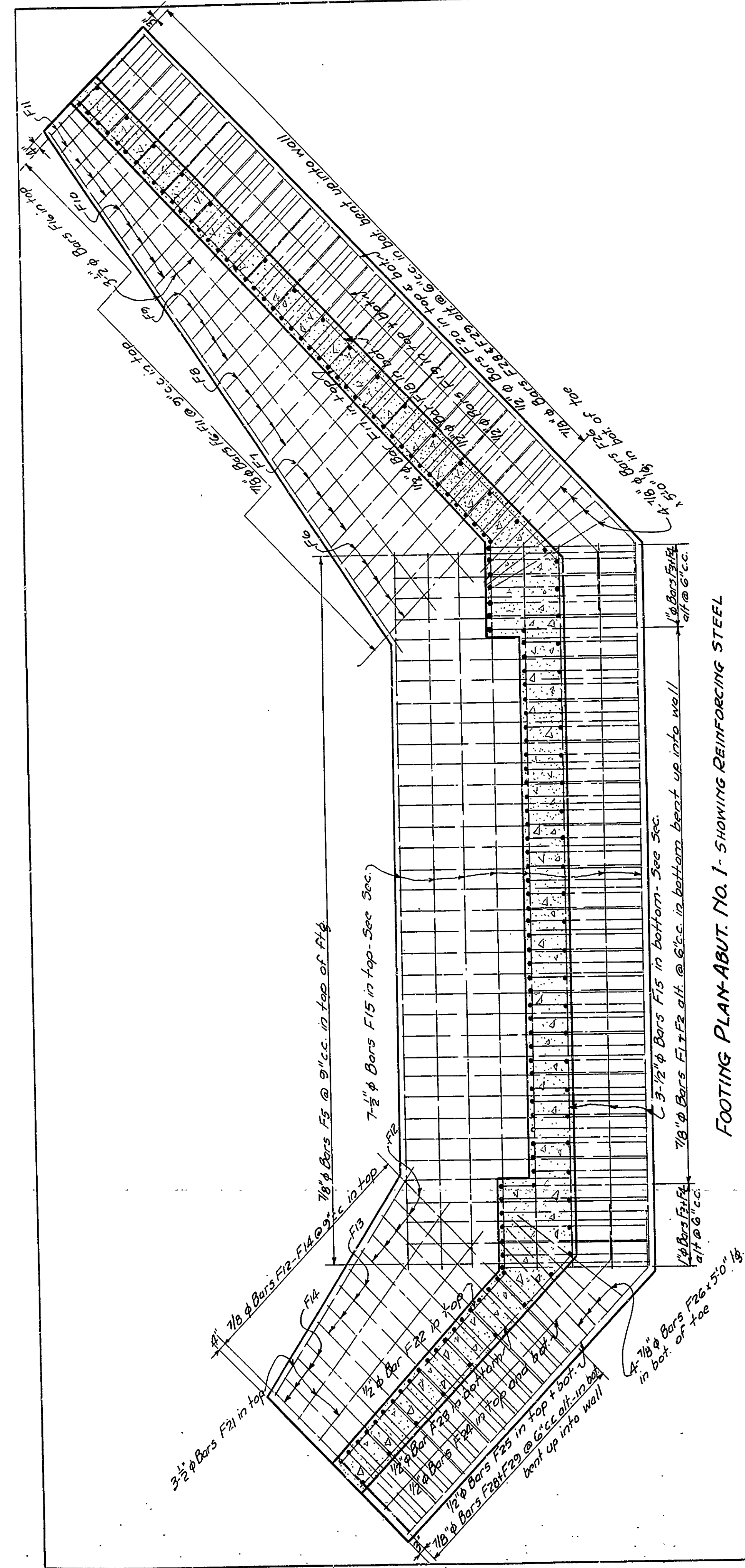
Drain Spcs. Exp. pl. 7-24-29, Form
C.R.C. - revised 9-12-29.

DETAILS
STANDARD 40'-0" R.C. DECK GIRDER
20'-0" ROADWAY
ARKANSAS STATE HIGHWAY DEPARTMENT
LITTLE ROCK, ARK.
Drawn By: Basler Date: 12/22/29
Traced By: Basler Date: 12/22/29
Checked By: Basler Date: 12/22/29
Scale: 3/8" = 1'-0"
Except as noted
BRIDGE NO. 1004 DRAWING NO. 1004

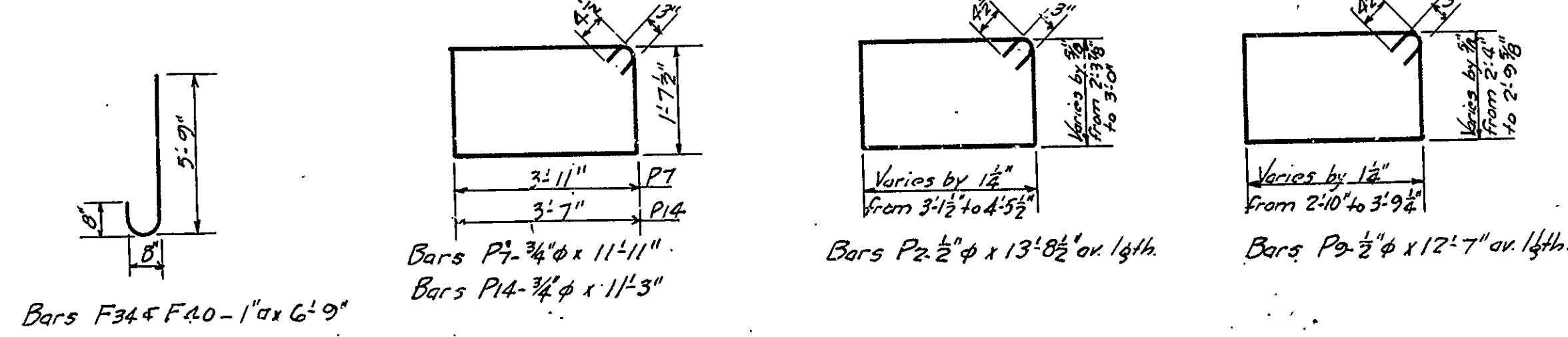
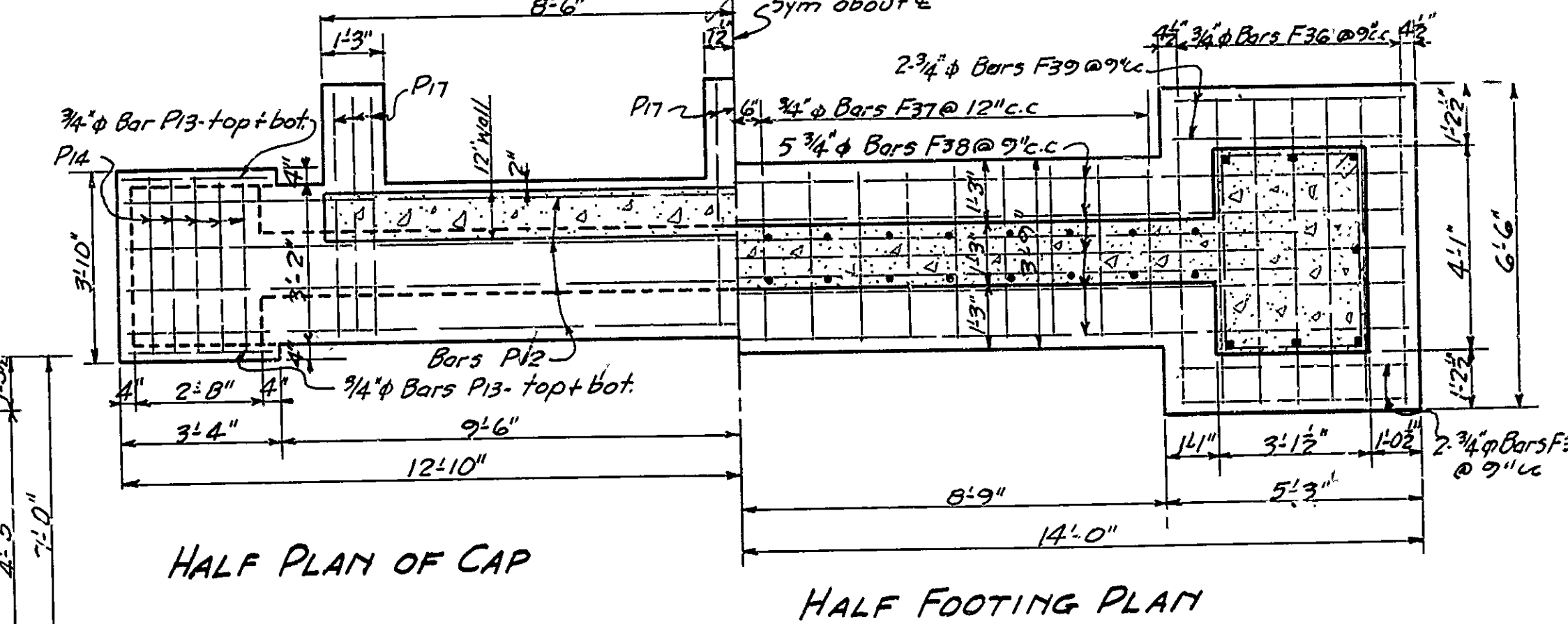
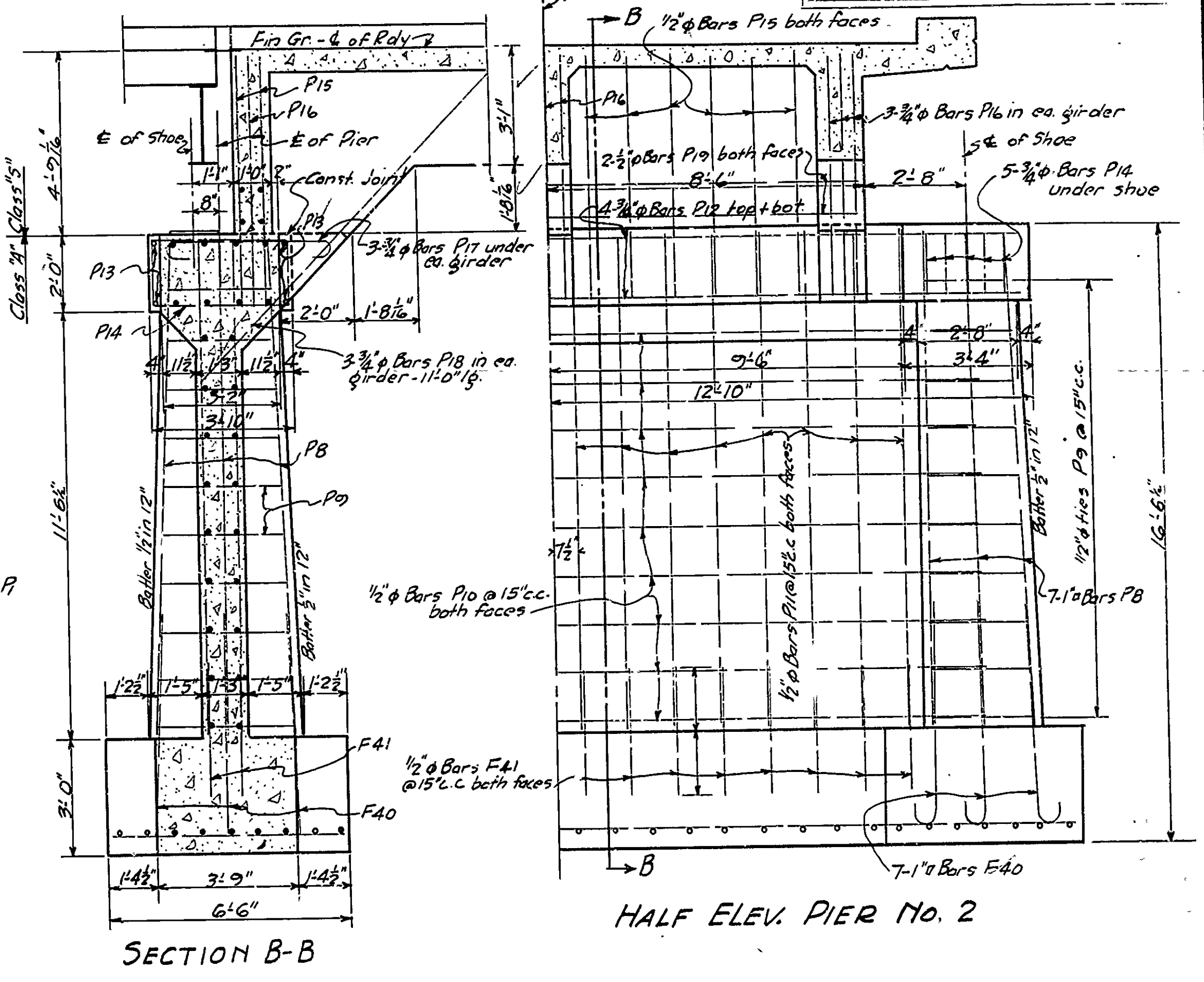
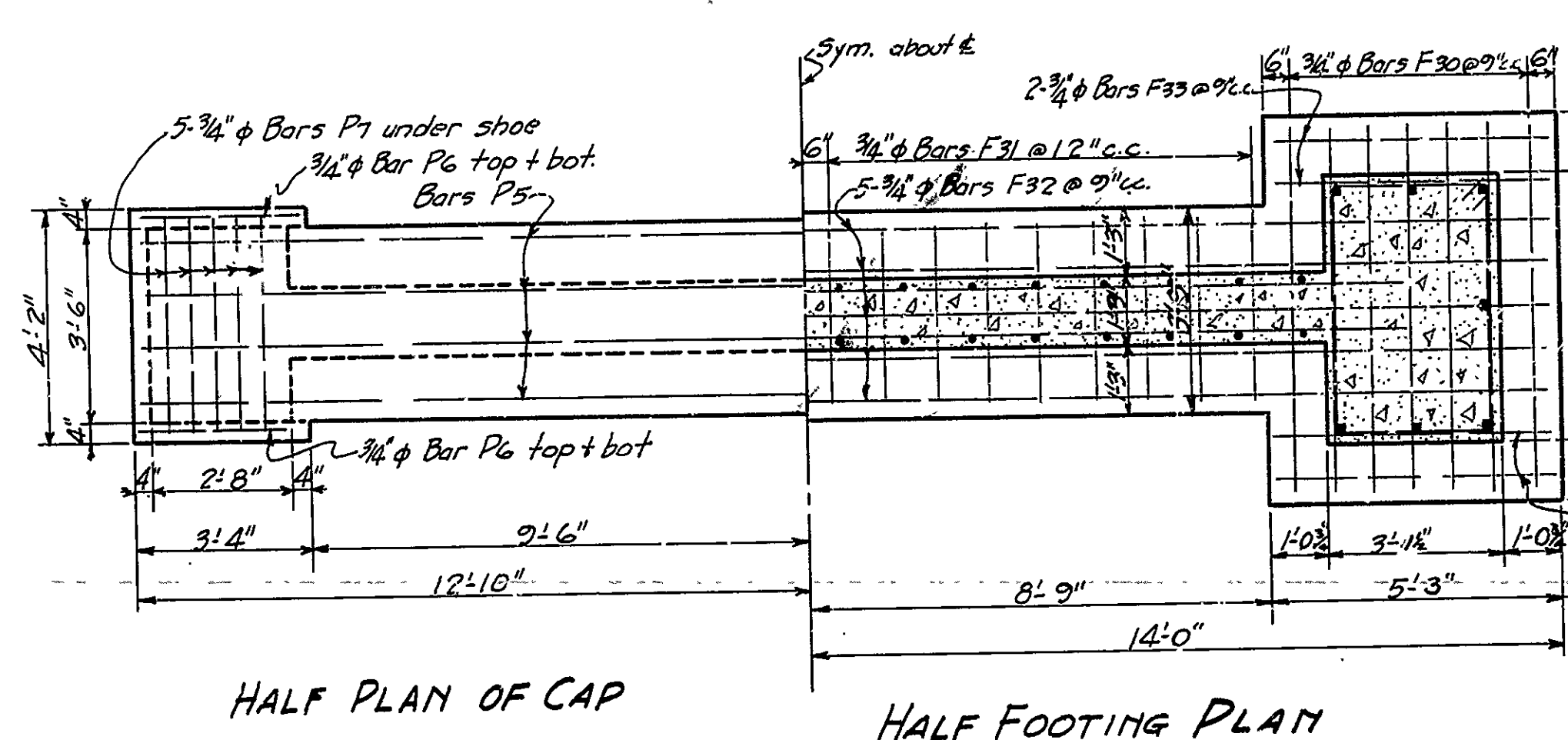
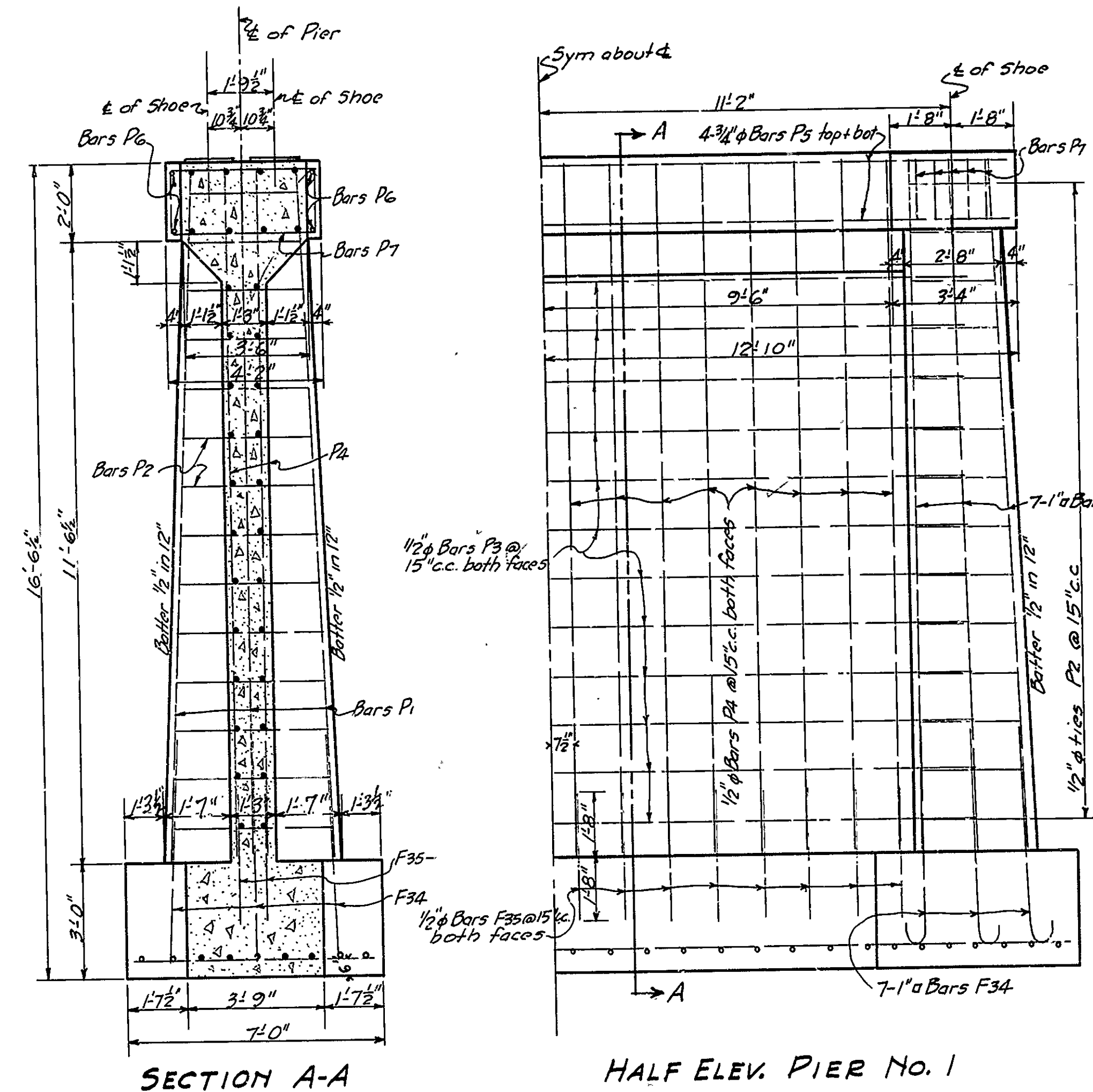
M.B. Basler
BRIDGE ENGINEER

FED. ROAD DIST. No.	STATE	FISCAL YEAR	SHEET No.	TOTAL SHEETS
5	AR	1929	10	16
JOB No.				
677				

For Details of 80' Steel Truss, See Dwg. No. 1093
 For Details of Std 40 R.C.D. Girder, See Dwg. No. 1004



FOOTING PLAN-ABUT. NO. 1 - SHOWING REINFORCING STEEL

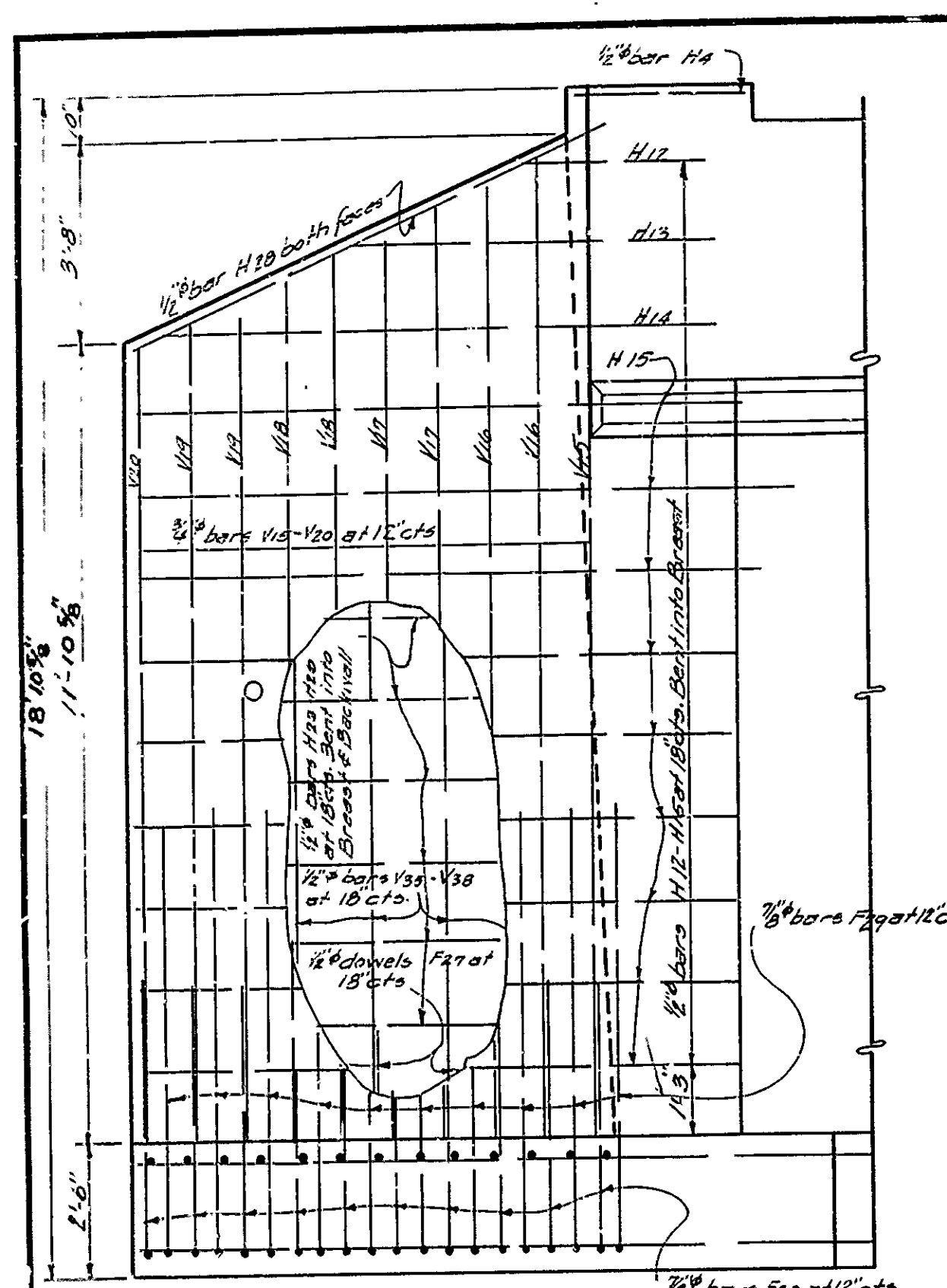


DETAILS OF FOOTING-ABUT. NO. 1 AND PIERS
 FOR BRIDGE OVER THREE FORKS OF WALNUT CREEK
 ROYAL-MONTGOMERY CO. LINE ROAD
 GARLAND CO.
 ROUTE 6 SEC. 4
 ARKANSAS STATE HIGHWAY DEPARTMENT
 LITTLE ROCK, ARK.
 Drawn By: HB Date: 4-10-29
 Traced By: HB Date: 4-13-29
 Checked By: CAD Date: 4-18-29
 Bridge No. 967 Scale: 3/8" = 1 ft.
 Heights not to scale
 DRAWING NO. 1533

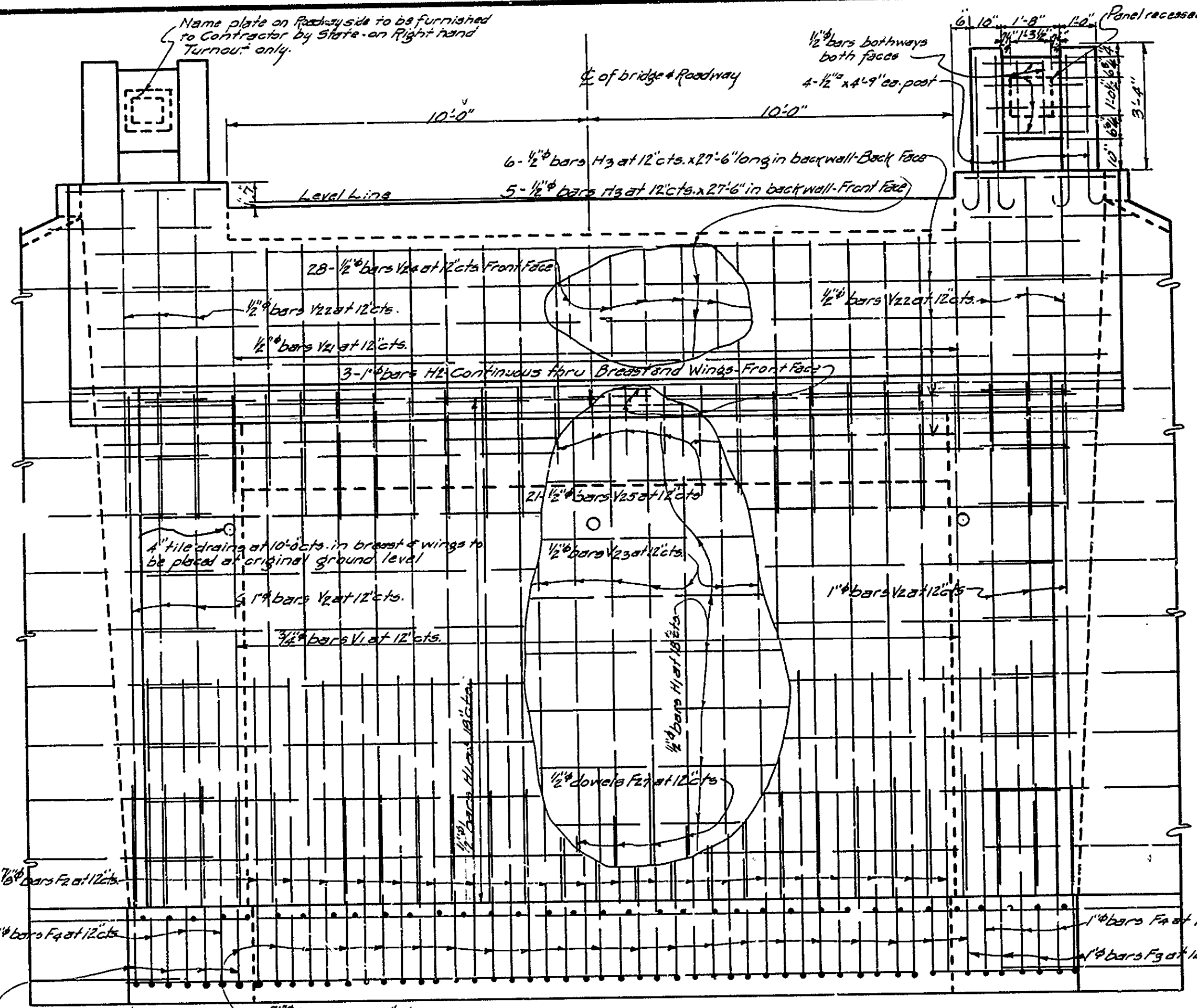
Revised E.A.R. No. 6-12-32 BHK
 Approved

M.B. Banner
 BRIDGE ENGINEER

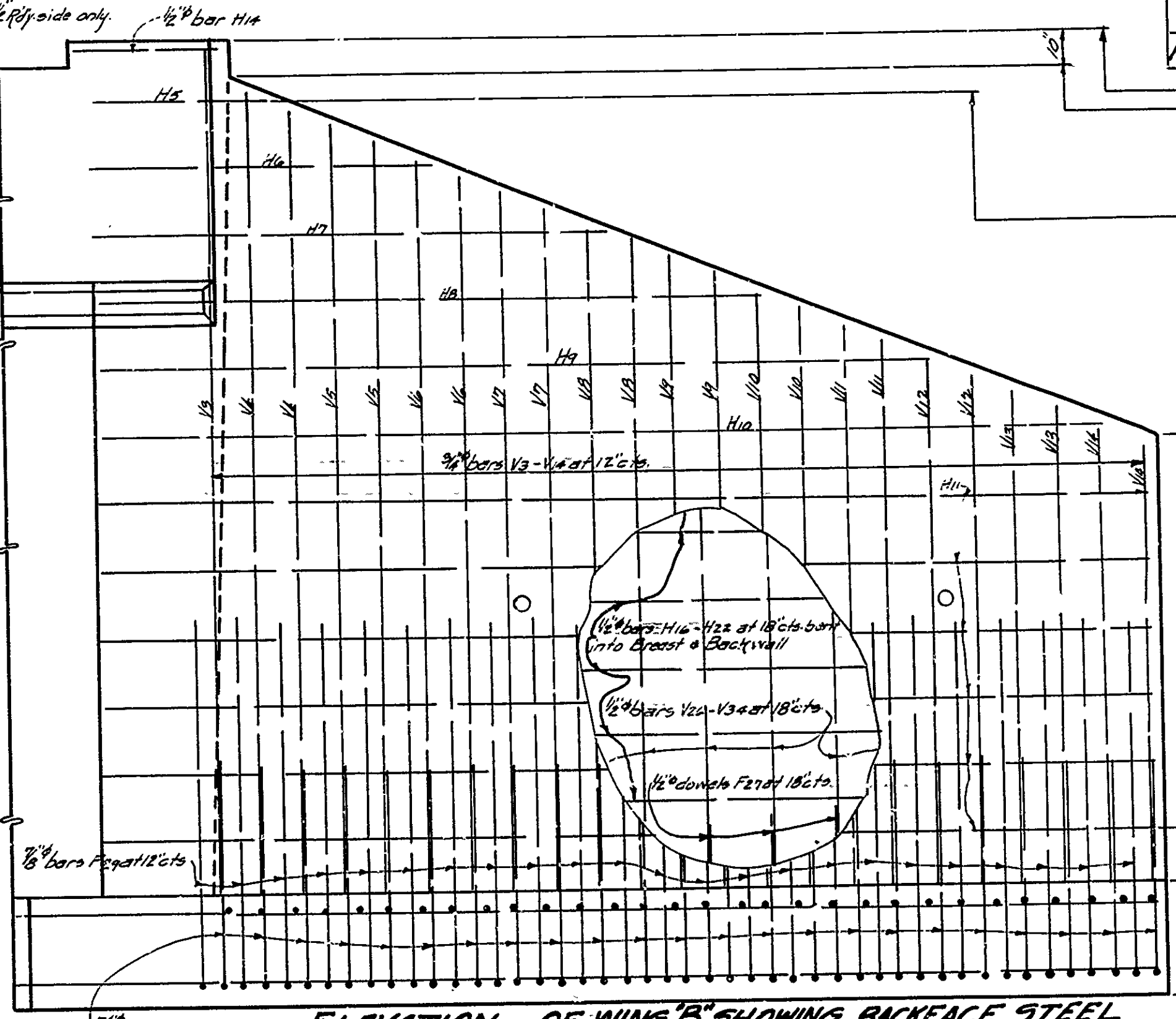
Special
 Special



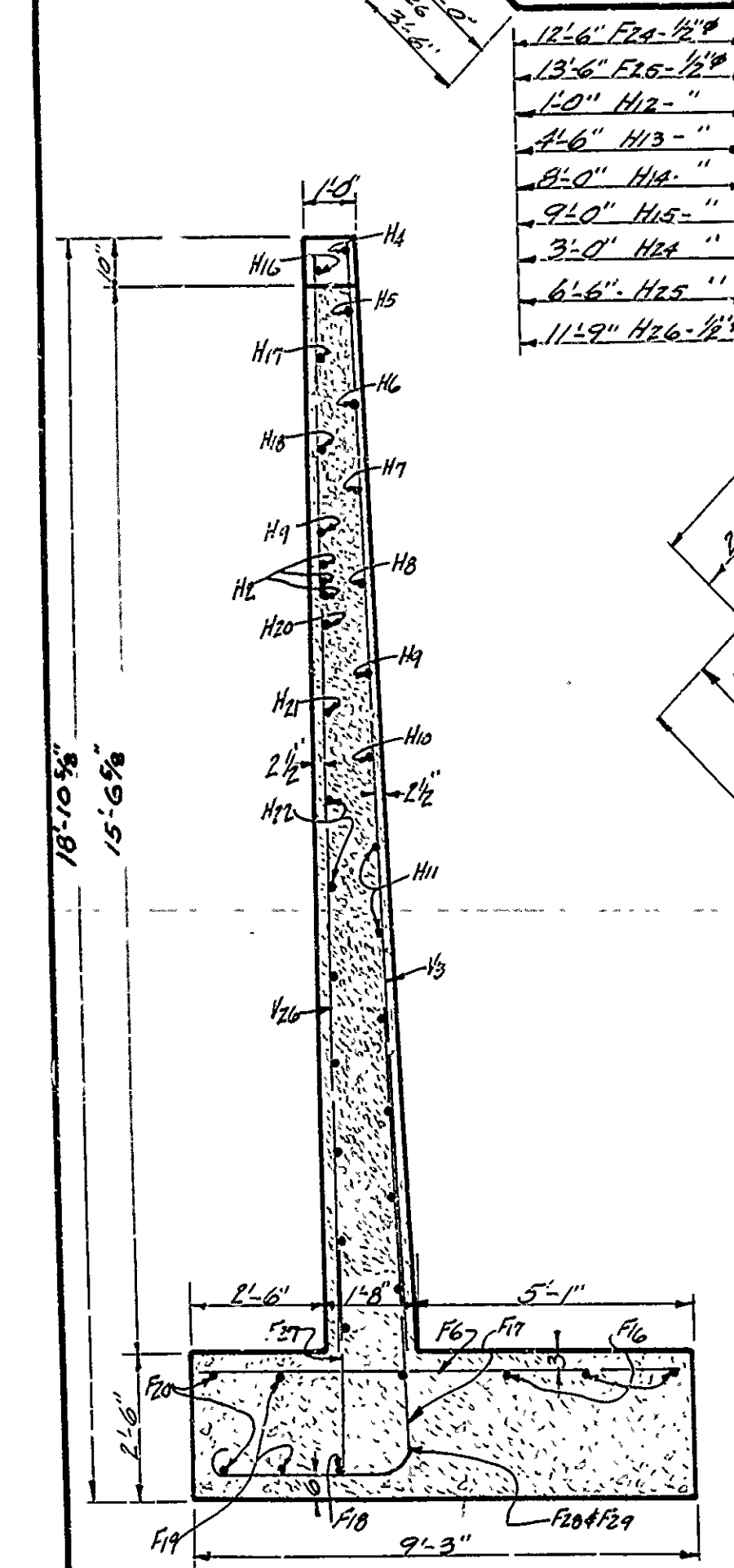
ELEVATION OF WING A SHOWING BACKFACE STEEL
FRONT FACE STEEL SHOWN IN INSET



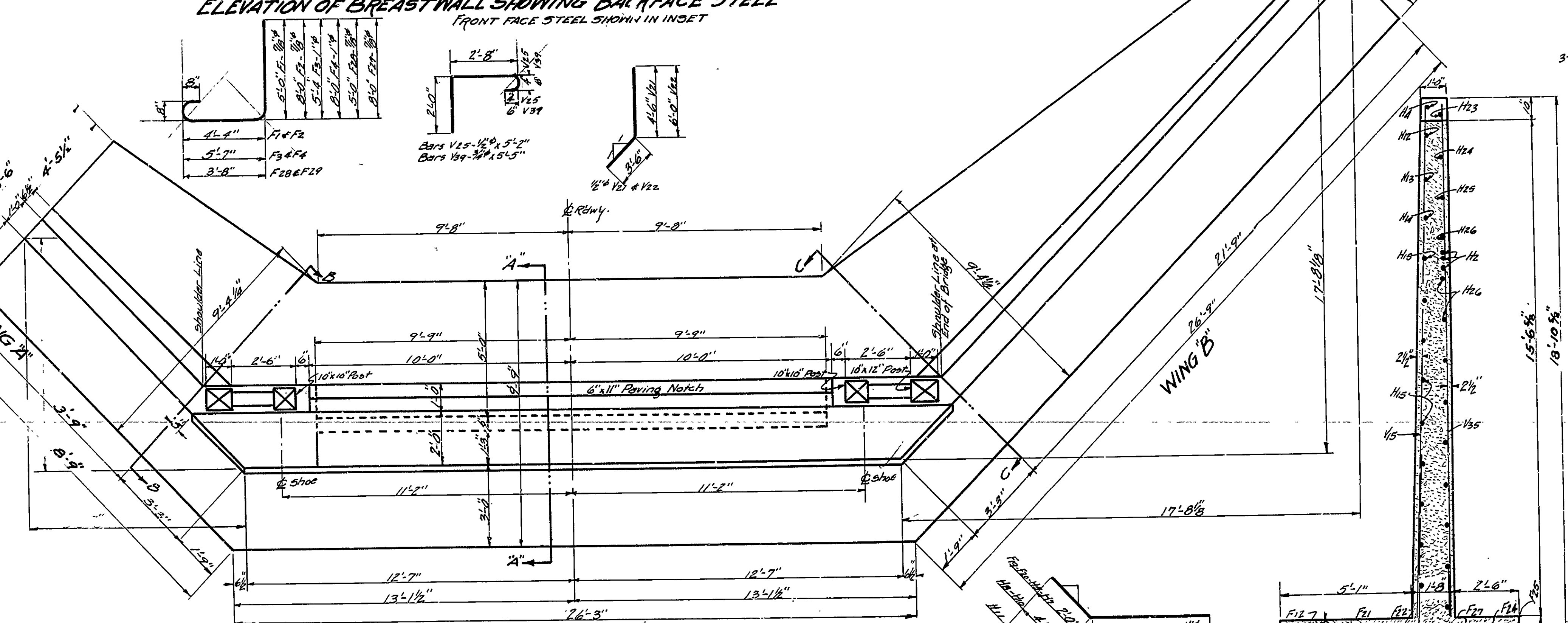
ELEVATION OF BREASTWALL SHOWING BACKFACE STEEL
FRONT FACE STEEL SHOWN IN INSET



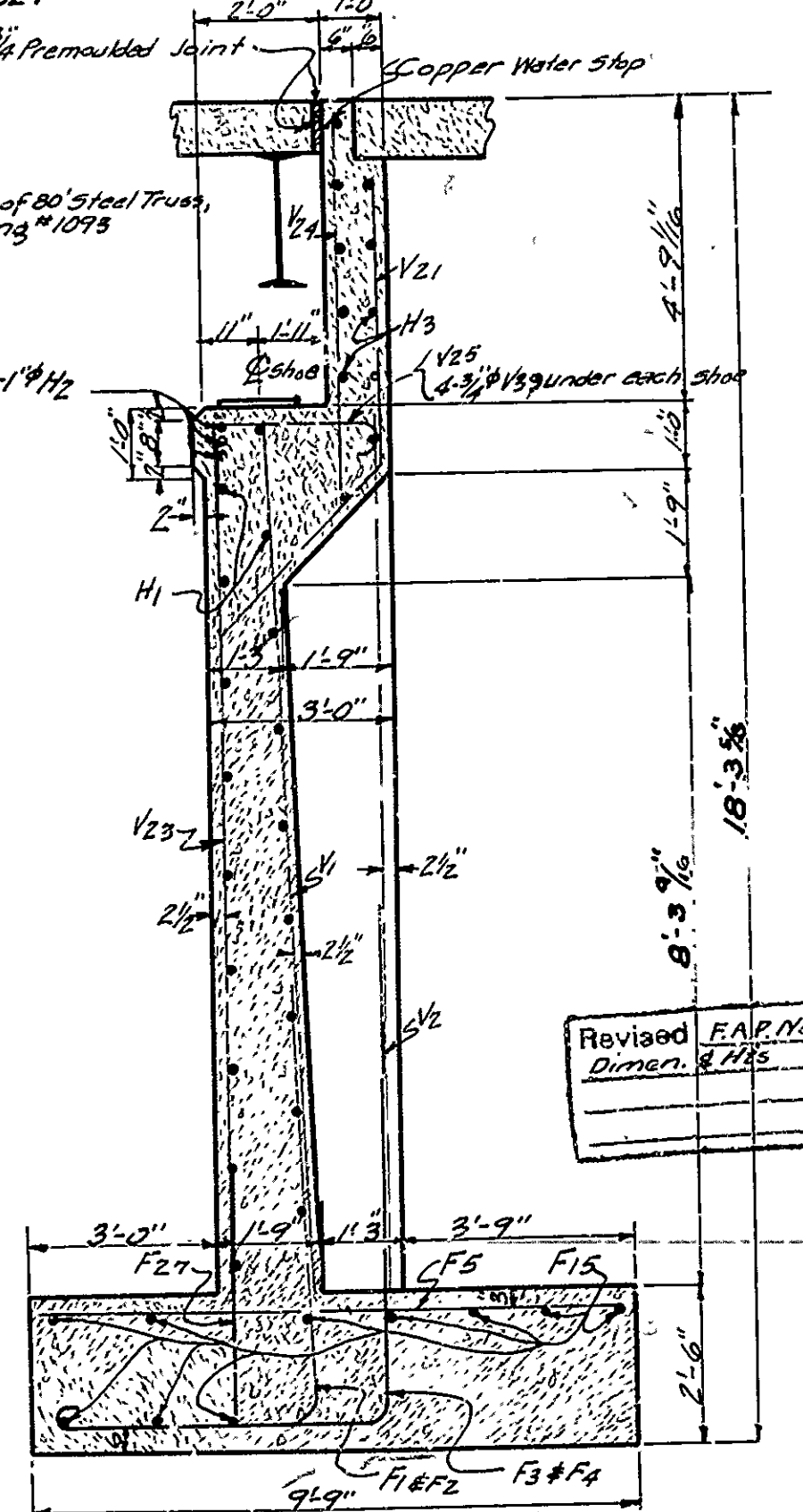
ELEVATION OF WING B SHOWING BACKFACE STEEL
FRONT FACE STEEL SHOWN IN INSET



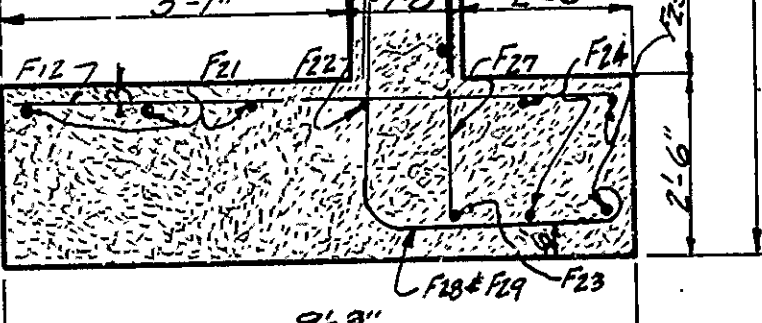
SECTION C-C



PLAN



SECTION A-A



SECTION B-B

12'-6"	F12-F14
13'-6"	F15-F16
14'-0"	H12
14'-6"	H13
21'-0"	H14
21'-0"	H15
3'-0"	H16
6'-6"	H25
11'-9"	H26-H27

2'-8"	F17-F18
5'-7"	F19-F20
3'-8"	F21-F22
2'-8"	F23-F24
2'-8"	F25-F26
2'-8"	F27-F28
2'-8"	F29-F30
2'-8"	F31-F32
2'-8"	F33-F34
2'-8"	F35-F36
2'-8"	F37-F38
2'-8"	F39-F40
2'-8"	F41-F42
2'-8"	F43-F44
2'-8"	F45-F46
2'-8"	F47-F48
2'-8"	F49-F50
2'-8"	F51-F52
2'-8"	F53-F54
2'-8"	F55-F56
2'-8"	F57-F58
2'-8"	F59-F60
2'-8"	F61-F62
2'-8"	F63-F64
2'-8"	F65-F66
2'-8"	F67-F68
2'-8"	F69-F70
2'-8"	F71-F72
2'-8"	F73-F74
2'-8"	F75-F76
2'-8"	F77-F78
2'-8"	F79-F80
2'-8"	F81-F82
2'-8"	F83-F84
2'-8"	F85-F86
2'-8"	F87-F88
2'-8"	F89-F90
2'-8"	F91-F92
2'-8"	F93-F94
2'-8"	F95-F96
2'-8"	F97-F98
2'-8"	F99-F100

For Footing Reinforcing Plan, see drawing No 1533
For details of Superstructure see drawing No. 1093 + 1094

Revised Concrections by R.A. 4/22/29

25'-6"	H17
26'-5"	H18
12'-0"	H19
5'-0"	H20
9'-0"	H21
13'-0"	H22
17'-0"	H23
21'-0"	H24
22'-3"	H25
24'-6"	H26

DETAILS OF ABUTMENT NO. 1 FOR BRIDGE OVER THREE FORKS OF WALNUT CREEK ROYAL-MONTGOMERY COUNTY LINE ROAD GARLAND COUNTY ARK. SEC.

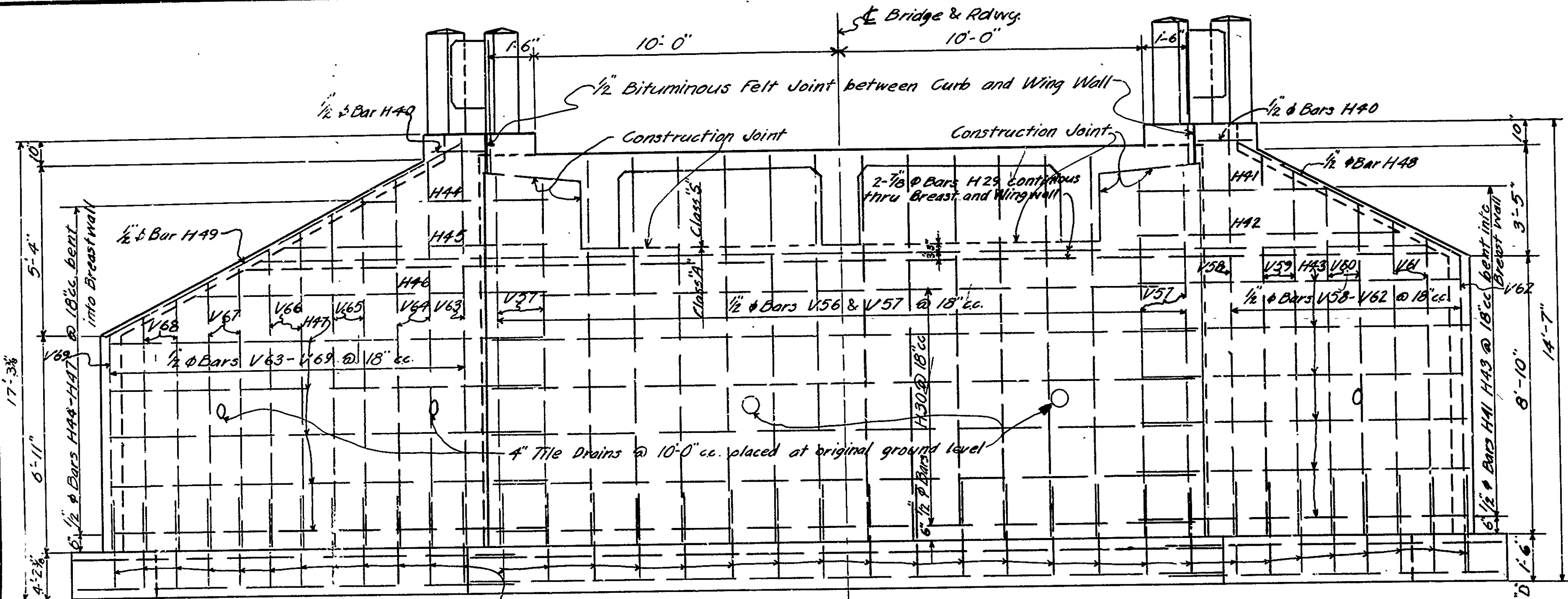
ARKANSAS STATE HIGHWAY DEPARTMENT
LITTLE ROCK, ARK.

Drawn By: [Signature] Date: 4-2-29
Traced By: [Signature] Date: 4-11-29
Checked By: [Signature] Date: 4-11-29
BRIDGE NO. 967
Scale: 3/16" = 1 ft.
Heights not to scale
DRAWING NO. 1532

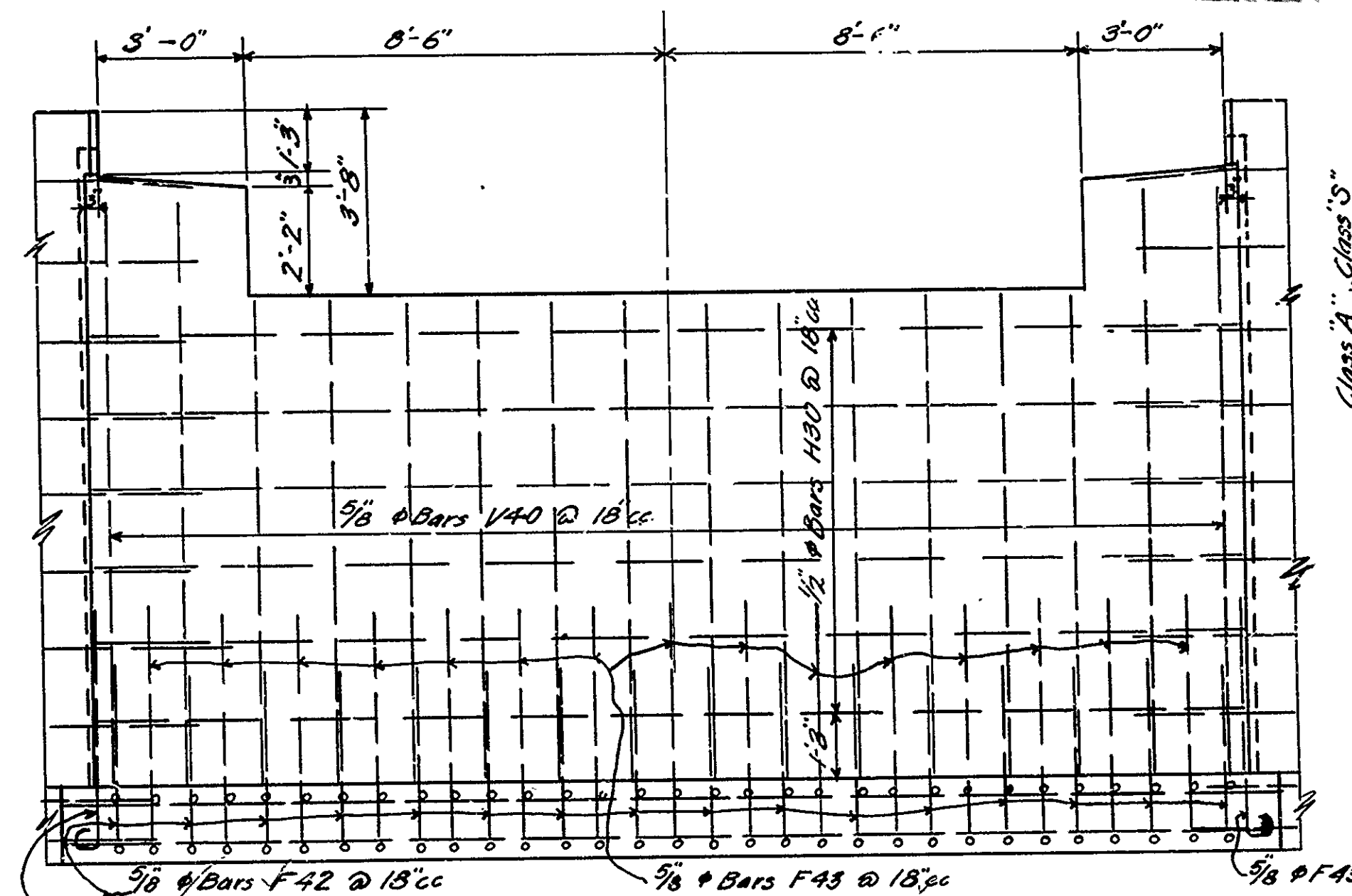
M.B. Garner
BRIDGE ENGINEER

FISCAL YEAR	SHEET NO.	TOTAL SHEETS
1929	677	11 16

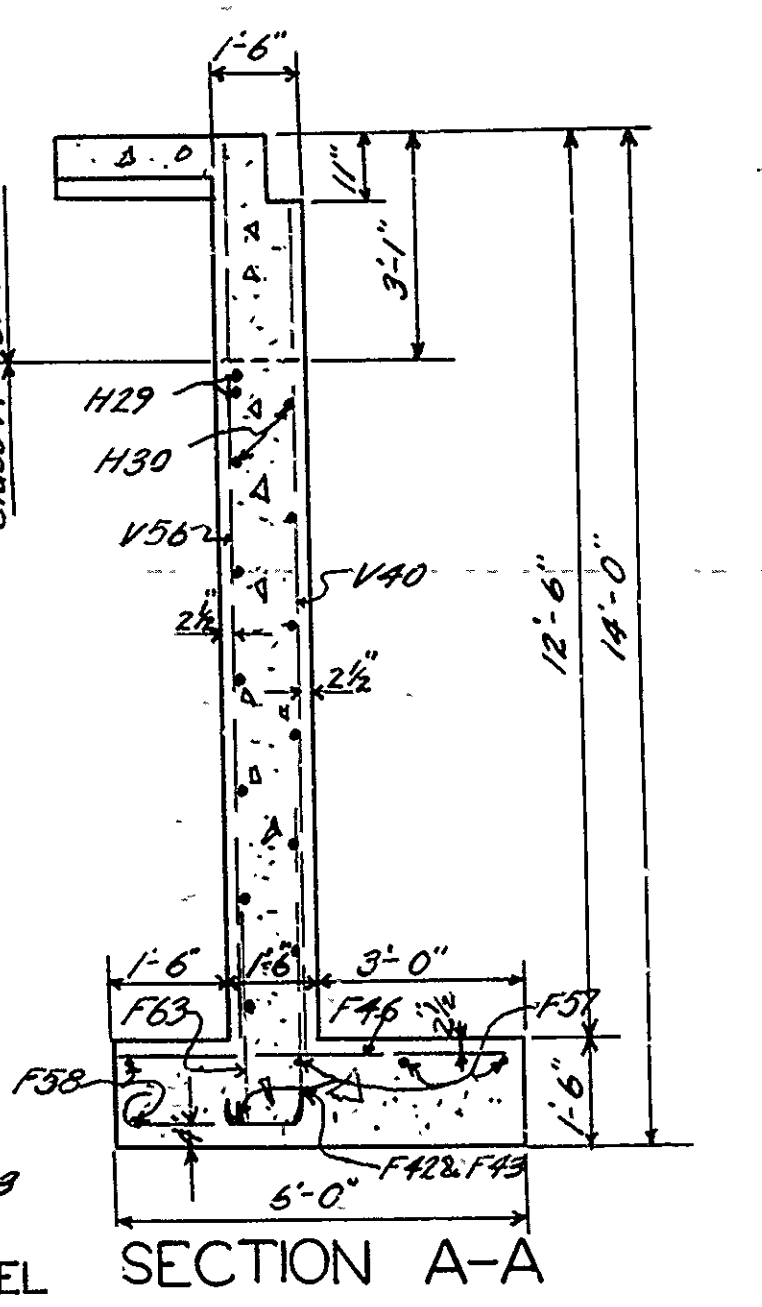
FISCAL YEAR	SHEET NO.	TOTAL SHEETS
1929	677	11 16



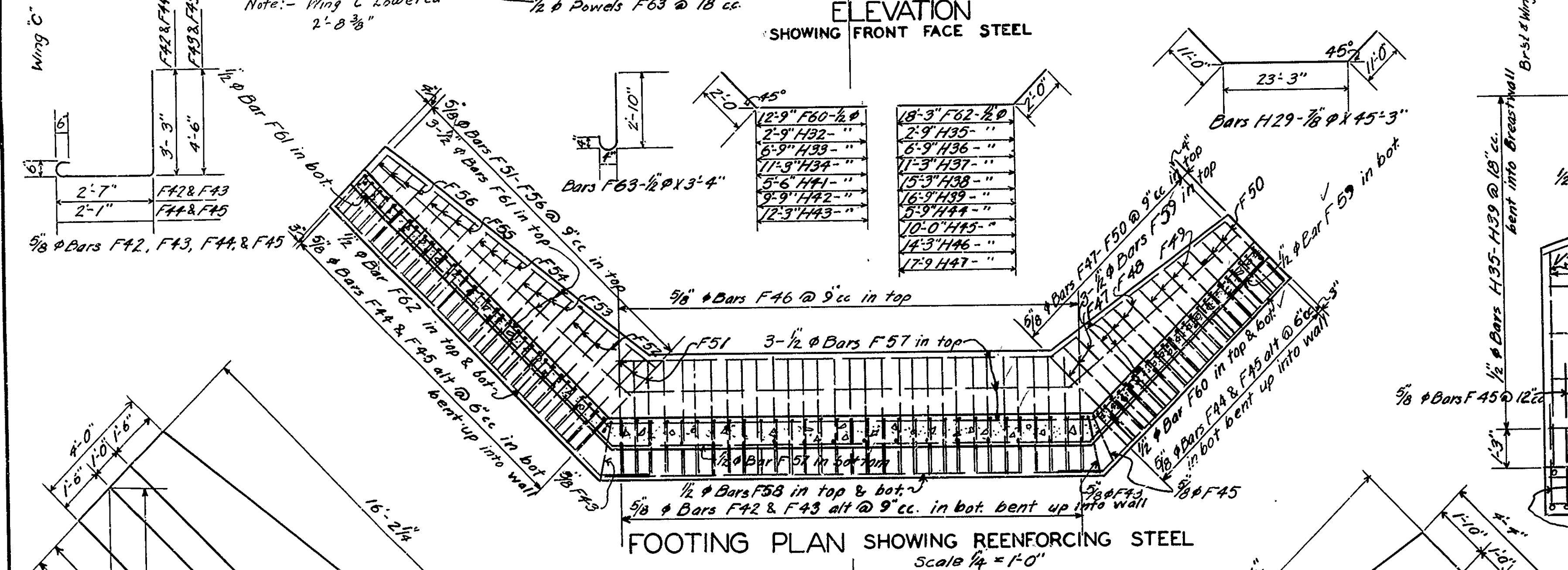
ELEVATION SHOWING FRONT FACE STEEL



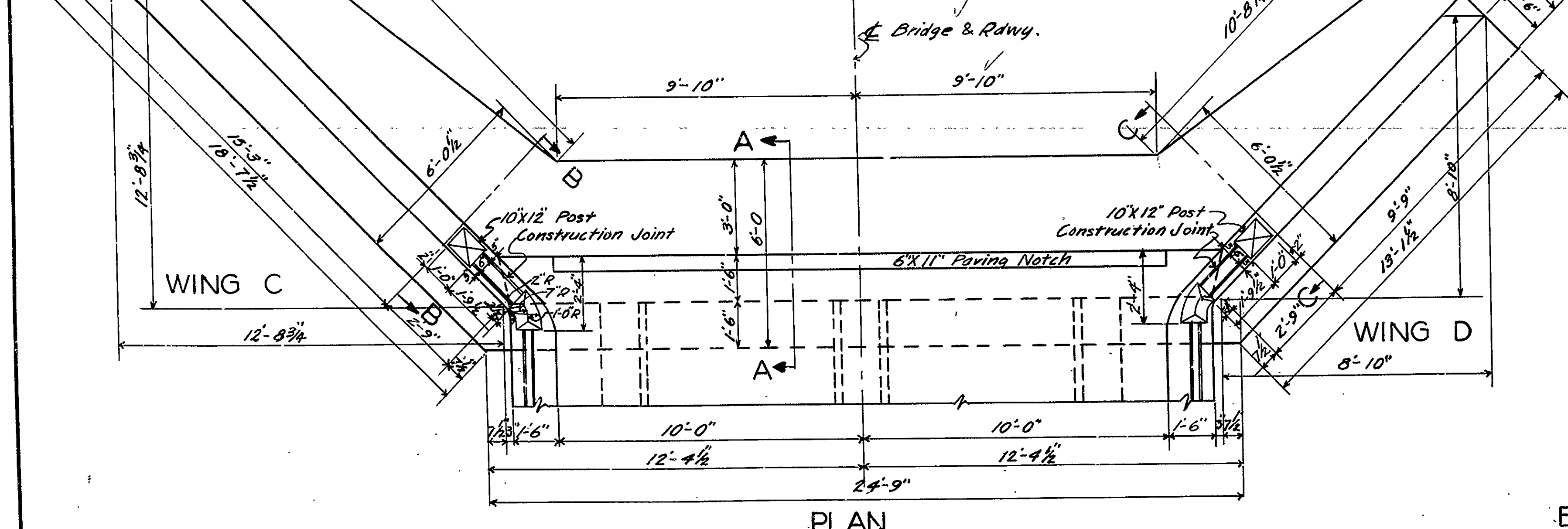
ELEV. OF BREASTWALL SHOWING BACK FACE STEEL



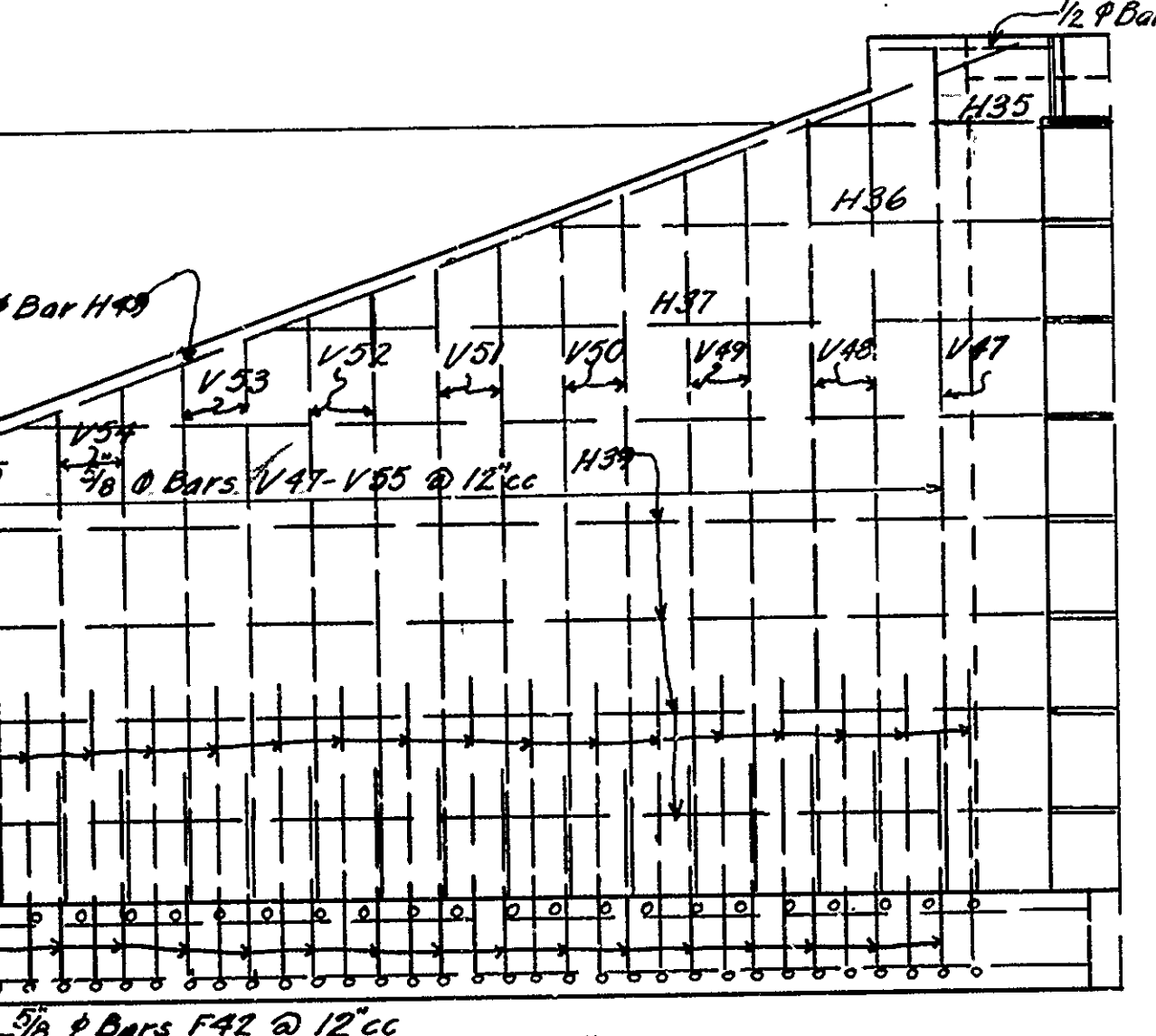
SECTION A-A



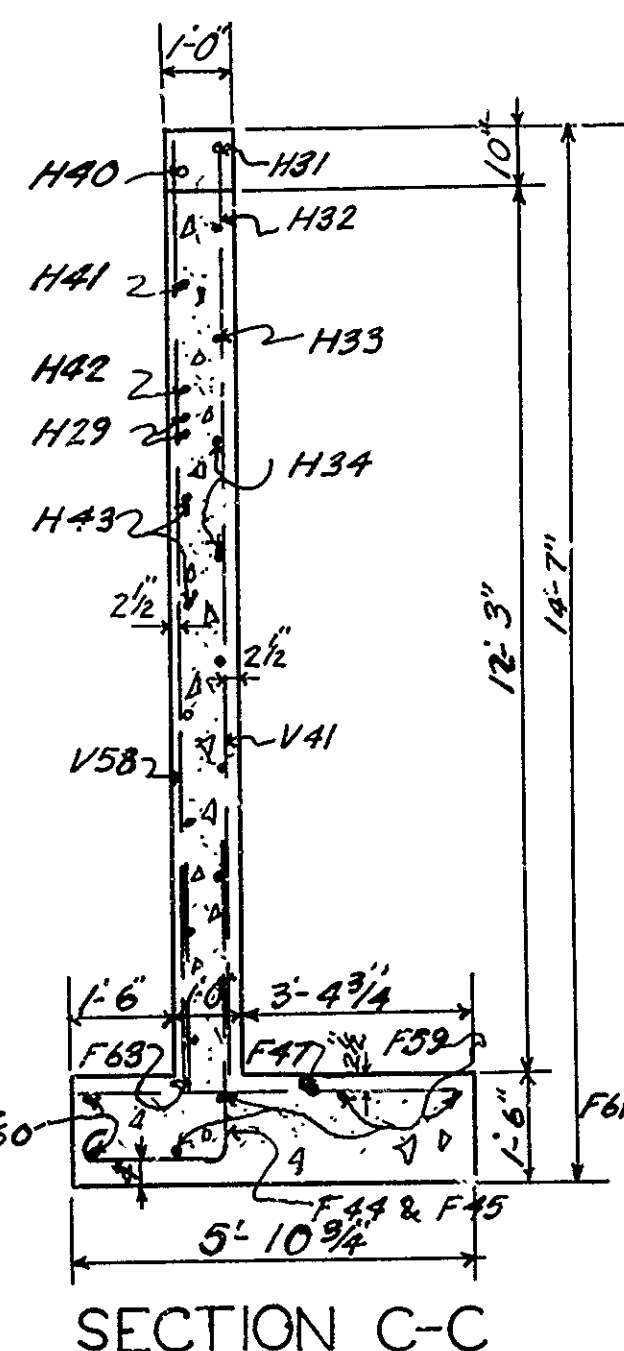
FOOTING PLAN SHOWING REINFORCING STEEL



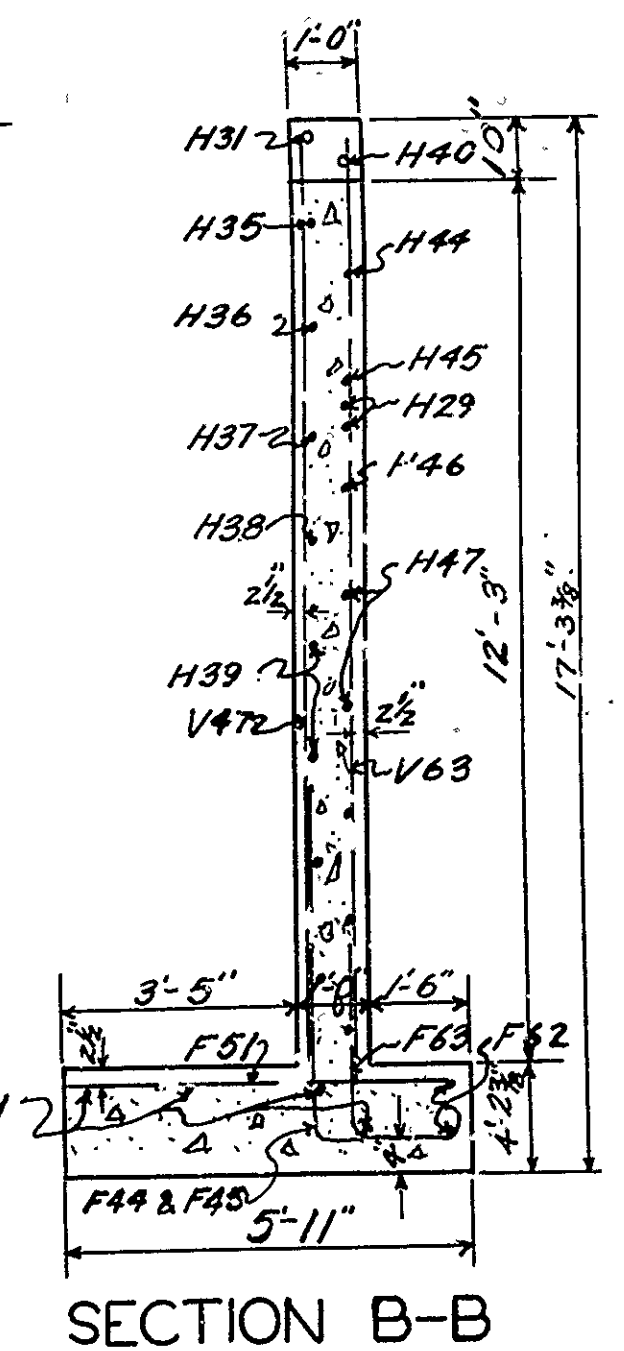
PLAN



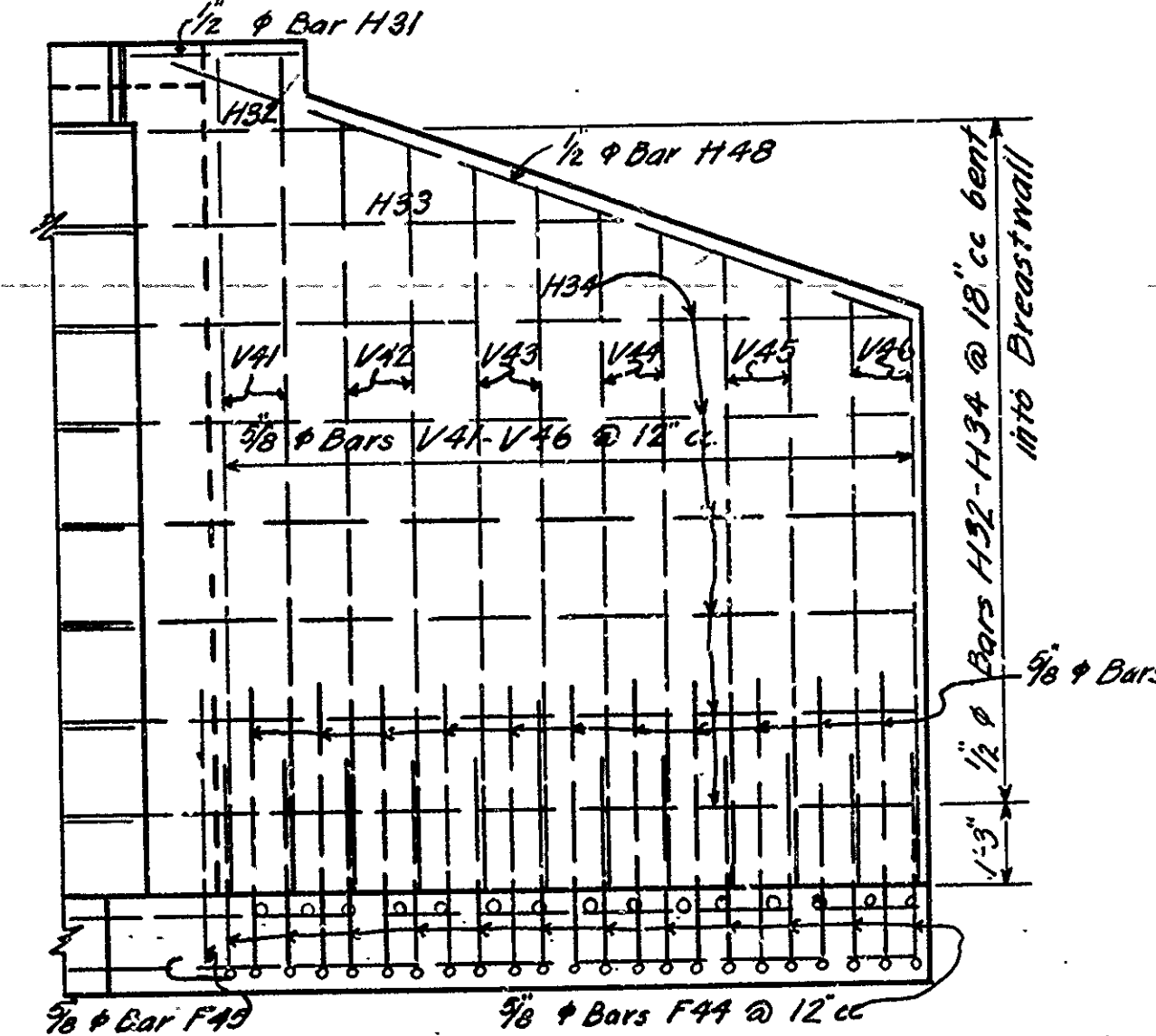
ELEV. OF WING C SHOWING BACK FACE STEEL



SECTION C-C



SECTION B-B



ELEV. OF WING D SHOWING BACK FACE STEEL

BRIDGE ENGINEER

Revised Construction by B.S. 12227
E.A.P.M. & U.S. 6-14-33 B.H.C.

DETAILS OF ABUTMENT
FOR BRIDGE OVER THREE FORKS OF WALNUT CR.
ROYAL-MONTGOMERY CO. LINE. RD.
GARLAND COUNTY
ROUTE 6 SEC. 4

ARKANSAS STATE HIGHWAY DEPARTMENT
LITTLE ROCK, ARK.

Drawn By: *Bastian* Date: 2-11-29
Traced By: *G.M.B.* Date: 2-16-29
Checked By: *C.H.D.* Date: 4-18-29
BRIDGE NO. 967 DRAWING NO. 1534