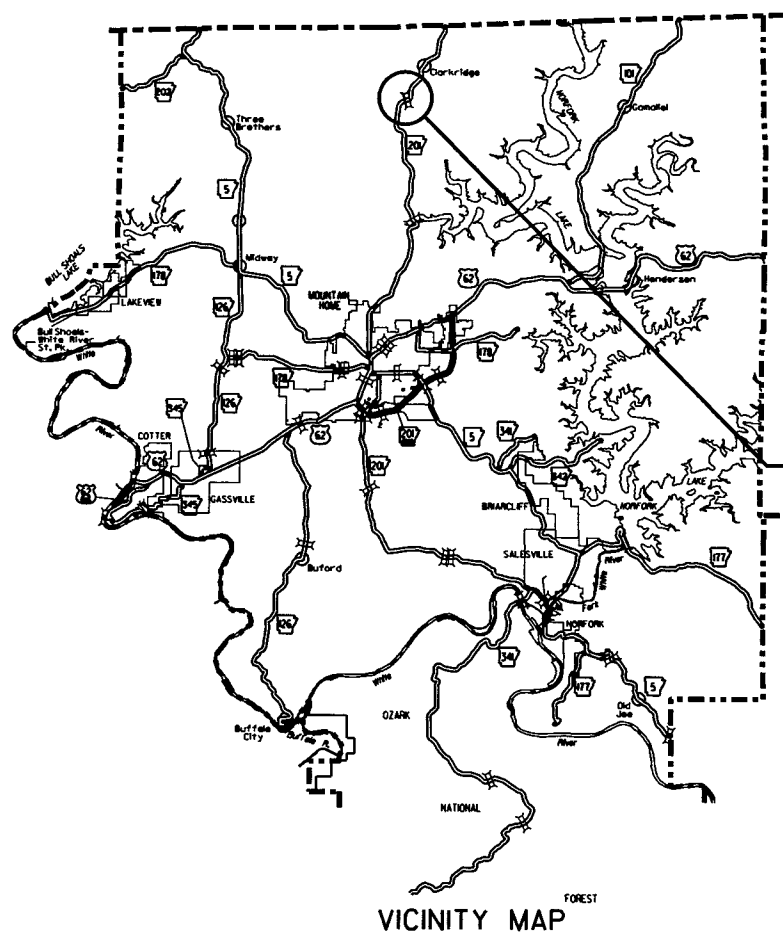


DATE REVISED	DATE FILMED	DATE REVISED	DATE FILMED	FED. DIST. NO.	STATE	FED. AID PROJ. NO.	SHEET NO.	TOTAL SHEETS
				6	ARK.			
							JOB NO.	009814

② E. PIGEON CREEK STR. & APPRS. (S)



VICINITY MAP

ARKANSAS STATE HIGHWAY AND TRANSPORTATION DEPARTMENT
CONSTRUCTION PLANS FOR STATE HIGHWAY

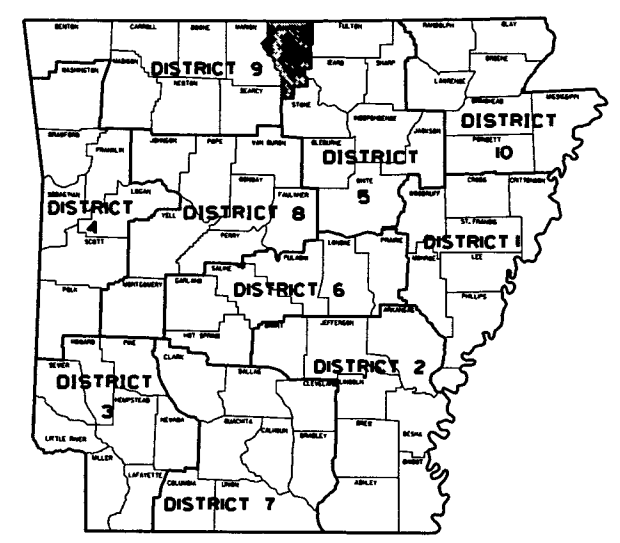
**E. PIGEON CREEK
STR. & APPRS. (S)**

BAXTER COUNTY

ROUTE 201 SECTION 1

JOB 009814

FED. AID PROJ. NHPP-0003(50)



ARK. HWY. DIST. NO. 9

NOT TO SCALE

• DESIGN TRAFFIC DATA •

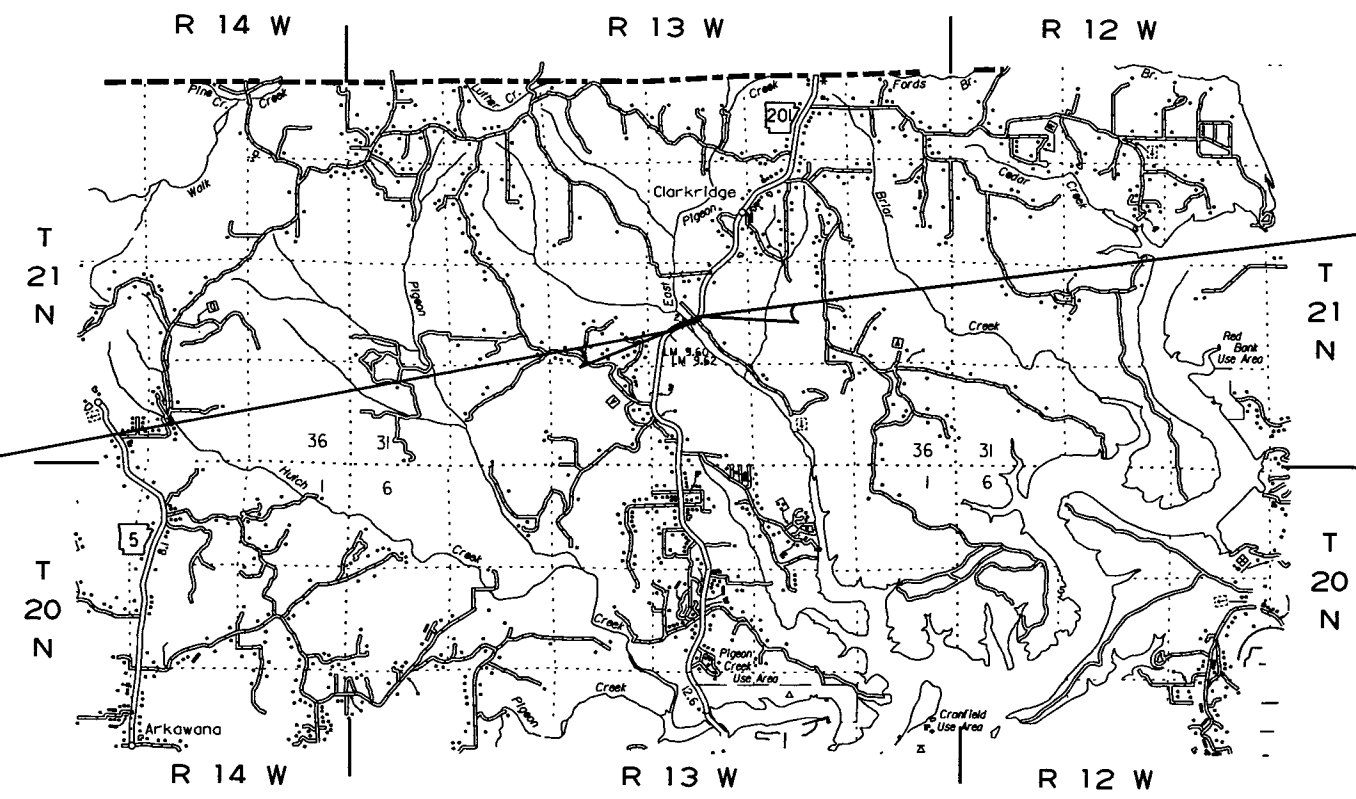
DESIGN YEAR	-----	2036
2016 ADT	-----	2100
2036 ADT	-----	2800
2036 DHV	-----	308
DIRECTIONAL DISTRIBUTION	-----	60%
TRUCKS	-----	7%
DESIGN SPEED	-----	40 MPH

BRIDGE DATA

① BR. END STA. 107+21.87
BRIDGE NO. 07397
40' - 0" CLEAR ROADWAY
132' - 3 1/8" TOTAL LENGTH
130' - 0" CONT. COMP. W-BEAM UNIT
(40', 50', 40')
BR. END STA. 108+54.13

STA. 96+73.54
BEGIN JOB 009814
LOG MILE 9.45

STA. 120+66.86
END JOB 009814



APPROVED



8-18-16
DEPUTY DIRECTOR
AND CHIEF ENGINEER

BEGINNING OF PROJECT	MID POINT OF PROJECT	END OF PROJECT
LATITUDE = N 36°27'42"	LATITUDE = N 36°27'46"	LATITUDE = N 36°27'54"
LONGITUDE = W 92°21'47"	LONGITUDE = W 92°21'38"	LONGITUDE = W 92°21'30"

GROSS LENGTH OF PROJECT	2393.32	FEET	OR	0.453	MILES
NET " " ROADWAY	2261.06	"	"	0.428	"
NET " " BRIDGES	132.26	"	"	0.025	"
NET " " PROJECT	2393.32	"	"	0.453	"

7/21/2016

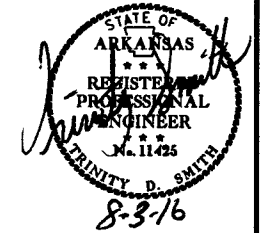
RO09814.DGN

DATE REVISED	DATE FILMED	DATE REVISED	DATE FILMED	FED. DIST. NO.	STATE	FED. AID PROJ. NO.	SHEET NO.	TOTAL SHEETS
				6	ARK.			
						009814	2	94

2 INDEX, GOV. SPECS., AND GEN. NOTES

GOVERNING SPECIFICATIONS

ARKANSAS STATE HIGHWAY COMMISSION STANDARD SPECIFICATIONS FOR HIGHWAY CONSTRUCTION, EDITION OF 2014, AND THE FOLLOWING SPECIAL PROVISIONS AND SUPPLEMENTAL SPECIFICATIONS:



INDEX OF SHEETS

SHEET NO.	TITLE	BRIDGE NO.	DRWG. NO.	DATE
1	TITLE SHEET			
2	INDEX OF SHEETS, GOVERNING SPECIFICATIONS, AND GENERAL NOTES			
3 - 4	TYPICAL SECTIONS OF IMPROVEMENT			
5 - 6	SPECIAL DETAILS			
7 - 12	TEMPORARY EROSION CONTROL DETAILS			
13 - 18	MAINTENANCE OF TRAFFIC DETAILS			
19	PERMANENT PAVEMENT MARKING DETAILS			
20 - 23	QUANTITIES			
24	SCHEDULE OF BRIDGE QUANTITIES	07397	58837	
25	SUMMARY OF QUANTITIES AND REVISIONS			
26 - 28	SURVEY CONTROL DETAILS			
29 - 30	PLAN AND PROFILE SHEETS			
31	LAYOUT OF BRIDGE OVER EAST PIGEON CREEK (SHEET 1 OF 2)	07397	58838	
32	LAYOUT OF BRIDGE OVER EAST PIGEON CREEK (SHEET 2 OF 2)	07397	58839	
33	DETAILS OF END BENTS (SHEET 1 OF 3)	07397	58840	
34	DETAILS OF END BENTS (SHEET 2 OF 3)	07397	58841	
35	DETAILS OF END BENTS (SHEET 3 OF 3)	07397	58842	
36	DETAILS OF INTERMEDIATE BENTS	07397	58843	
37	DETAILS OF 130'-0" CONTINUOUS COMPOSITE W-BEAM UNIT (SHEET 1 OF 5)	07397	58844	
38	DETAILS OF 130'-0" CONTINUOUS COMPOSITE W-BEAM UNIT (SHEET 2 OF 5)	07397	58845	
39	DETAILS OF 130'-0" CONTINUOUS COMPOSITE W-BEAM UNIT (SHEET 3 OF 5)	07397	58846	
40	DETAILS OF 130'-0" CONTINUOUS COMPOSITE W-BEAM UNIT (SHEET 4 OF 5)	07397	58847	
41	DETAILS OF 130'-0" CONTINUOUS COMPOSITE W-BEAM UNIT (SHEET 5 OF 5)	07397	58848	
42	DETAILS OF ELASTOMERIC BEARINGS	07397	58849	
43	STANDARD DETAILS FOR EMBANKMENT CONSTRUCTION AND BACKFILL AT BRIDGE ENDS		55000	2-27-14
44	STANDARD DETAILS FOR DUMPED RIPRAP AND FILTER BLANKET AND COMPUTING EXCAVATION FOR STRUCTURES		55001	2-27-14
45	STANDARD DETAILS FOR PERMANENT STEEL BRIDGE DECK FORMS FOR STEEL & CONCRETE GIRDER SPANS		55005	3-24-16
46	STANDARD GENERAL NOTES FOR STEEL BRIDGE STRUCTURES		55006	9-02-15
47	STANDARD DETAILS FOR TYPE D BRIDGE NAME PLATE		55010	1-14-15
48	STANDARD DETAILS FOR STEEL H-PILES AND PILE ENCASEMENTS		55020	3-24-16
49	STANDARD DETAILS FOR TYPE A APPROACH GUTTERS		55030A	9-02-15
50	CONCRETE DITCH PAVING		CDP-1	11-17-10
51	FLARED END SECTION		FES-1	10-18-96
52	FLARED END SECTION		FES-2	10-18-96
53	GUARD RAIL DETAILS		GR-8	7-14-10
54	GUARD RAIL DETAILS		GR-8A	7-14-10
55	GUARD RAIL DETAILS		GR-9	4-17-08
56	GUARD RAIL DETAILS		GR-9A	4-17-08
57	GUARD RAIL DETAILS		GR-10	7-14-10
58	GUARD RAIL DETAILS		GR-10A	7-14-10
59	GUARD RAIL DETAILS		GRT-1	7-14-10
60	CONCRETE PIPE CULVERT FILL HEIGHTS & BEDDING		PCC-1	2-27-14
61	METAL PIPE CULVERT FILL HEIGHTS & BEDDING		PCM-1	2-27-14
62	PLASTIC PIPE CULVERT (HIGH DENSITY POLYETHYLENE)		PCP-1	2-27-14
63	PLASTIC PIPE CULVERT (PVC F949)		PCP-2	2-27-14
64	PAVEMENT MARKING DETAILS		PM-1	5-12-16
65	DETAILS OF PIPE UNDERDRAIN		PU-1	4-10-03
66	TABLES AND METHOD OF SUPERELEVATION FOR TWO-WAY TRAFFIC		SE-2	10-18-96
67	DETAILS OF SPECIAL ITEMS		SI-1	9-12-13
68	STANDARD TRAFFIC CONTROLS FOR HIGHWAY CONSTRUCTION		TC-1	9-02-15
69	STANDARD TRAFFIC CONTROLS FOR HIGHWAY CONSTRUCTION		TC-2	9-02-15
70	STANDARD TRAFFIC CONTROLS FOR HIGHWAY CONSTRUCTION		TC-3	9-02-15
71	STANDARD TRAFFIC CONTROLS FOR HIGHWAY CONSTRUCTION - TEMPORARY PRECAST BARRIER		TC-4	2-27-14
72	STANDARD TRAFFIC CONTROLS FOR HIGHWAY CONSTRUCTION - TEMPORARY PRECAST BARRIER		TC-5	10-15-09
73	TEMPORARY EROSION CONTROL DEVICES		TEC-1	12-15-11
74	TEMPORARY EROSION CONTROL DEVICES		TEC-2	6-02-94
75	TEMPORARY EROSION CONTROL DEVICES		TEC-3	11-03-94
76	WIRE FENCE WATER GAPS		WF-2	4-20-79
77	WIRE FENCE TYPE C AND D		WF-4	8-22-02
78 - 94	CROSS SECTIONS			

NOTE. CROSS SECTIONS NOT NORMALLY INCLUDED IN PLANS SOLD TO PROSPECTIVE BIDDERS, BUT MAY BE HAD UPON REQUEST.

NUMBER	TITLE
ERRATA	ERRATA FOR THE BOOK OF STANDARD SPECIFICATIONS
FHWA-1273	REQUIRED CONTRACT PROVISIONS FEDERAL-AID CONSTRUCTION CONTRACTS
FHWA-1273	SUPPLEMENT - EQUAL EMPLOYMENT OPPORTUNITY - NOTICE TO CONTRACTORS
FHWA-1273	SUPPLEMENT - SPECIFIC EQUAL EMPLOYMENT OPPORTUNITY RESPONSIBILITIES (23 U.S.C. 140)
FHWA-1273	SUPPLEMENT - EQUAL EMPLOYMENT OPPORTUNITY - GOALS AND TIMETABLES
FHWA-1273	SUPPLEMENT - EQUAL EMPLOYMENT OPPORTUNITY - FEDERAL STANDARDS
FHWA-1273	SUPPLEMENT - POSTERS AND NOTICES REQUIRED FOR FEDERAL-AID PROJECTS
FHWA-1273	SUPPLEMENT - WAGE RATE DETERMINATION
100-3	CONTRACTOR'S LICENSE
108-1	LIQUIDATED DAMAGES
108-2	WORK ALLOWED PRIOR TO ISSUANCE OF WORK ORDER
303-1	AGGREGATE BASE COURSE
400-1	TACK COATS
410-1	CONSTRUCTION REQUIREMENTS AND ACCEPTANCE OF ASPHALT CONCRETE PLANT MIX COURSES
604-1	RETROREFLECTIVE SHEETING FOR TRAFFIC CONTROL DEVICES IN CONSTRUCTION ZONES
606-1	PIPE CULVERTS FOR SIDE DRAINS
620-1	MULCH COVER
JOB 009814	ARCHEOLOGICAL MONITORING
JOB 009814	BIDDING REQUIREMENTS AND CONDITIONS
JOB 009814	BROADBAND INTERNET SERVICE FOR ASPHALT CONCRETE PLANT
JOB 009814	BROADBAND INTERNET SERVICE FOR FIELD OFFICE
JOB 009814	CARGO PREFERENCE ACT REQUIREMENTS
JOB 009814	COMPACTED EMBANKMENT
JOB 009814	CONSTRUCTION IN SPECIAL FLOOD HAZARD AREAS
JOB 009814	COORDINATION OF LIDAR BRIDGE SCAN
JOB 009814	DIRECT TENSION INDICATORS FOR HIGH STRENGTH BOLT ASSEMBLIES
JOB 009814	DISADVANTAGED BUSINESS ENTERPRISE BIDDERS RESPONSIBILITIES
JOB 009814	EXTENSION FOR PIPE CULVERTS
JOB 009814	GOALS FOR DISADVANTAGED BUSINESS ENTERPRISE PARTICIPATION
JOB 009814	HIGH PERFORMANCE PAVEMENT MARKING
JOB 009814	ISSUANCE OF PROPOSALS
JOB 009814	MANDATORY ELECTRONIC CONTRACT
JOB 009814	MANDATORY ELECTRONIC DOCUMENT SUBMITTAL
JOB 009814	NESTING SITES OF MIGRATORY BIRDS
JOB 009814	OFF-SITE RESTRAINING CONDITIONS FOR INDIANA AND NORTHERN LONG-EARED BATS
JOB 009814	PARTNERING REQUIREMENTS
JOB 009814	PLASTIC PIPE
JOB 009814	SECTION 404 NATIONWIDE 14 PERMIT REQUIREMENTS
JOB 009814	SHORING FOR CULVERTS
JOB 009814	SOIL STABILIZATION
JOB 009814	SPECIAL CLEARING REQUIREMENTS
JOB 009814	STORM WATER POLLUTION PREVENTION PLAN
JOB 009814	SUBMISSION OF ASPHALT CONCRETE HOT MIX ACCEPTANCE TEST RESULTS
JOB 009814	UTILITY ADJUSTMENTS
JOB 009814	VALUE ENGINEERING
JOB 009814	WARM MIX ASPHALT

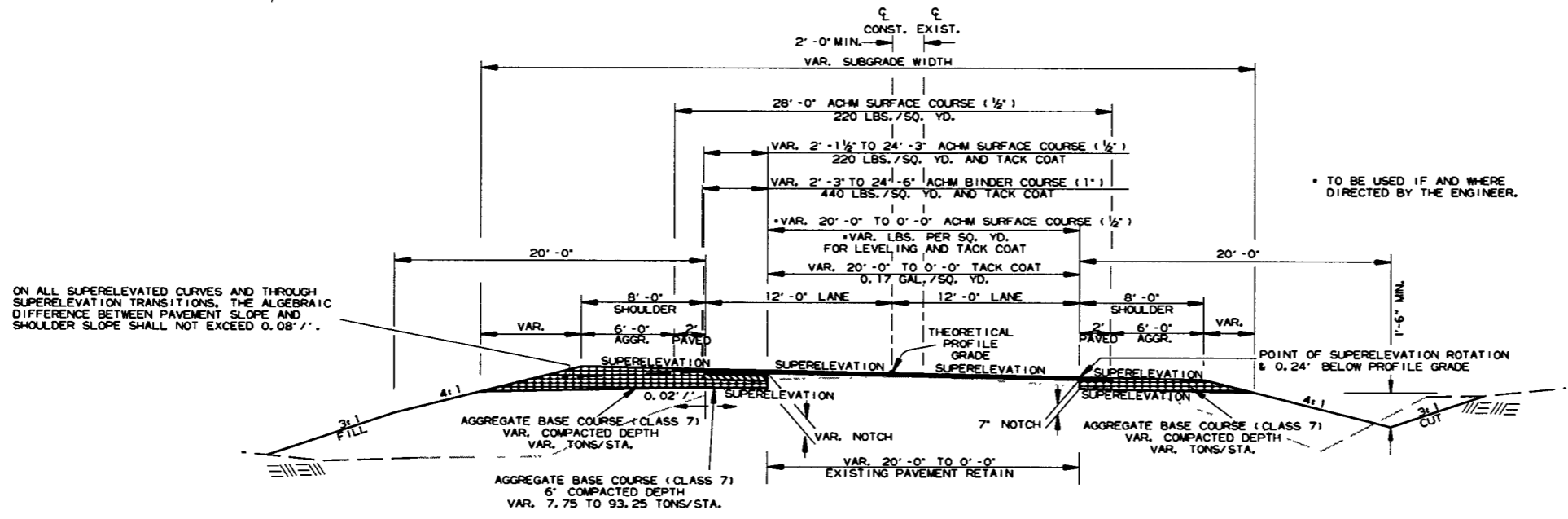
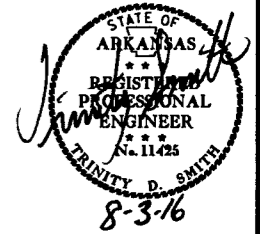
GENERAL NOTES

- GRADE LINE DENOTES FINISHED GRADE WHERE SHOWN ON PLANS
- ALL PIPE LINES, POWER, TELEPHONE, AND TELEGRAPH LINES TO BE MOVED OR LOWERED BY THE RESPECTIVE OWNERS AS PER AGREEMENT WITH SUCH OWNERS.
- ANY EQUIPMENT OR APPURTENANCE THAT INTERFERES WITH THE PROPOSED CONSTRUCTION AND WHICH MAY BE THE PROPERTY OF UTILITY SERVICE ORGANIZATIONS SHALL BE MOVED BY THE OWNERS UNLESS OTHERWISE PROVIDED
- THE CONTRACTOR SHALL BE RESPONSIBLE FOR MAINTAINING U.S. MAILBOXES WITHIN THE PROJECT LIMITS IN SUCH A MANNER THAT THE PUBLIC MAY RECEIVE CONTINUED MAIL SERVICE. PAYMENT WILL BE CONSIDERED INCLUDED IN THE PRICE BID FOR THE VARIOUS BID ITEMS
- ALL LAND MONUMENTS LOCATED WITHIN THE CONSTRUCTION AREA SHALL BE PROTECTED IN ACCORDANCE WITH SECTION 107.12 OF THE STANDARD SPECIFICATIONS
- ALL TREES THAT DO NOT DIRECTLY INTERFERE WITH THE PROPOSED CONSTRUCTION SHALL BE SPARED AS DIRECTED BY THE ENGINEER. CARE AND DISCRETION SHALL BE USED TO INSURE THAT ALL TREES NOT TO BE REMOVED SHALL BE HARMED AS LITTLE AS POSSIBLE DURING THE CONSTRUCTION OPERATIONS
- THE CONTRACTOR SHALL BE RESPONSIBLE FOR PROVIDING A FENCE TO CONTROL LIVESTOCK IN AREAS WHERE PASTURES ARE SEVERED. WIRE FENCE MAY BE CONSTRUCTED INITIALLY, OR IN LIEU THEREOF, THE CONTRACTOR AT HIS OWN EXPENSE, MAY ELECT TO PROVIDE TEMPORARY FENCING SUITABLE TO CONTAIN LIVESTOCK.
- ALL FLEXIBLE BASE AND ASPHALTIC PAVEMENTS REMOVED SHALL BE PAID FOR UNDER THE ITEM NO 210 - UNCLASSIFIED EXCAVATION
- THE EXISTING ASPHALT PAVEMENT TO BE REMOVED FROM THE REMAINING PAVEMENT SHALL BE SEPARATED BY SAWING ALONG A NEAT LINE. AFTER SAWING, THE PAVEMENT TO BE REMOVED SHALL BE CAREFULLY REMOVED IN A MANNER THAT WILL NOT DAMAGE THE PAVEMENT THAT IS TO REMAIN. ANY DAMAGE OF THE ASPHALT PAVEMENT THAT IS TO REMAIN IN PLACE SHALL BE REPAIRED AT THE CONTRACTOR'S EXPENSE.

INDEX OF SHEETS, GOVERNING SPECIFICATIONS AND GENERAL NOTES

DATE REVISED	DATE FILMED	DATE REVISED	DATE FILMED	FED. RD. DIST. NO.	STATE	FED. AID PROJ. NO.	SHEET NO.	TOTAL SHEETS
				6	ARK.			
				JOB NO.	009814		3	94

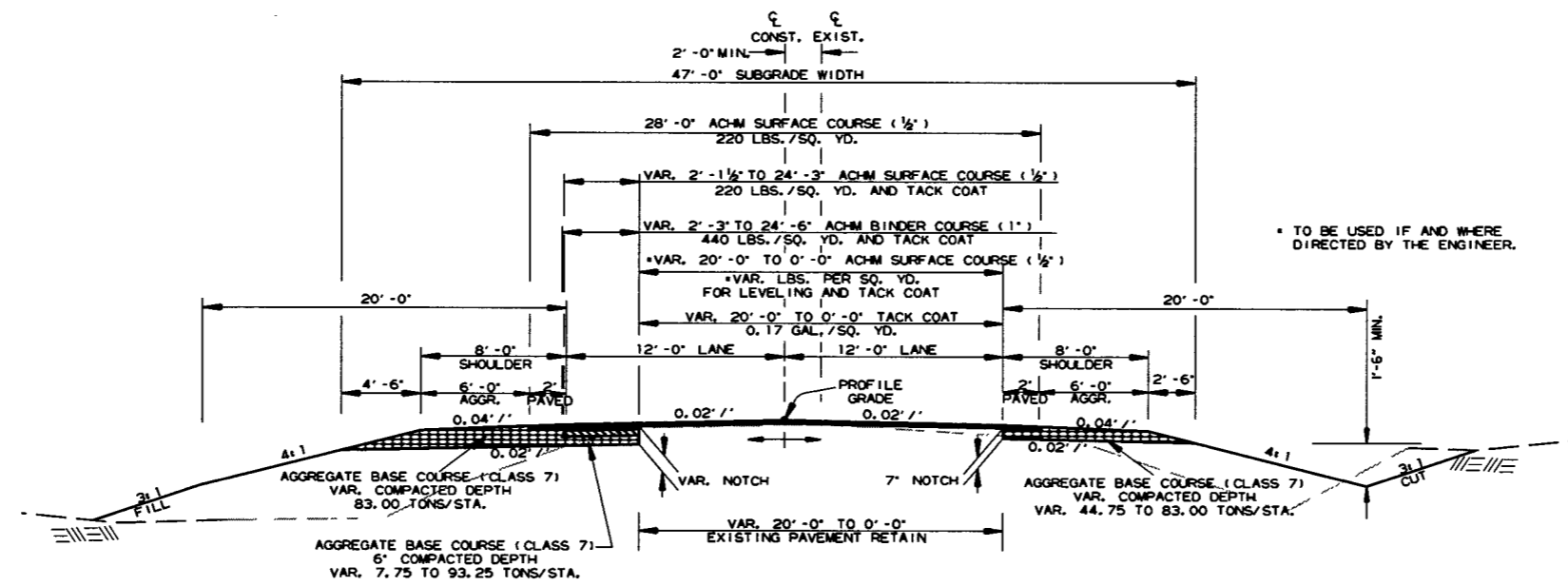
2 TYPICAL SECTIONS OF IMPROVEMENT



NOTCH AND WIDENING SECTION - SUPERELEVATION

STA. 96+73.54 - STA. 98+23.54
 STA. 99+36.89 - STA. 100+02.08
 STA. 115+84.32 - STA. 120+66.86

NOTES:
 REFER TO CROSS SECTIONS FOR DEVIATION FROM THE NORMAL SLOPES. NO CHANGES SHALL BE MADE FROM THE PLANNED SLOPES WITHOUT THE APPROVAL OF THE ENGINEER.
 THE THICKNESS OF AGGREGATE BASE COURSE SHALL BE WITHIN PLUS OR MINUS ONE INCH OF THE PLAN THICKNESS SHOWN. THE CONTRACTOR WILL CORRECT ANY DEFICIENT THICKNESS THAT DOES NOT MEET TOLERANCE INDICATED. PAYMENT WILL NOT BE MADE FOR MATERIAL PLACED IN EXCESS OF THE TOLERANCE INDICATED.
 ASPHALT FOR LEVELING OF EXISTING PAVEMENT SHALL BE PLACED ONLY IF AND WHERE DIRECTED BY THE ENGINEER. CALCULATIONS FOR THE AMOUNT OF LEVELING AND/OR LEVELING OPERATIONS SHALL BE PERFORMED BEFORE CONSTRUCTING NOTCH AND WIDENING. CALCULATIONS WILL NOT BE PAID FOR DIRECTLY BUT PAYMENT WILL BE CONSIDERED INCLUDED IN THE VARIOUS PAY ITEMS.
 THE FINAL 2" OF SURFACE COURSE IS TO BE PLACED AFTER ALL OTHER COURSES HAVE BEEN LAID. LONGITUDINAL JOINTS SHALL BE AT LANE LINES.

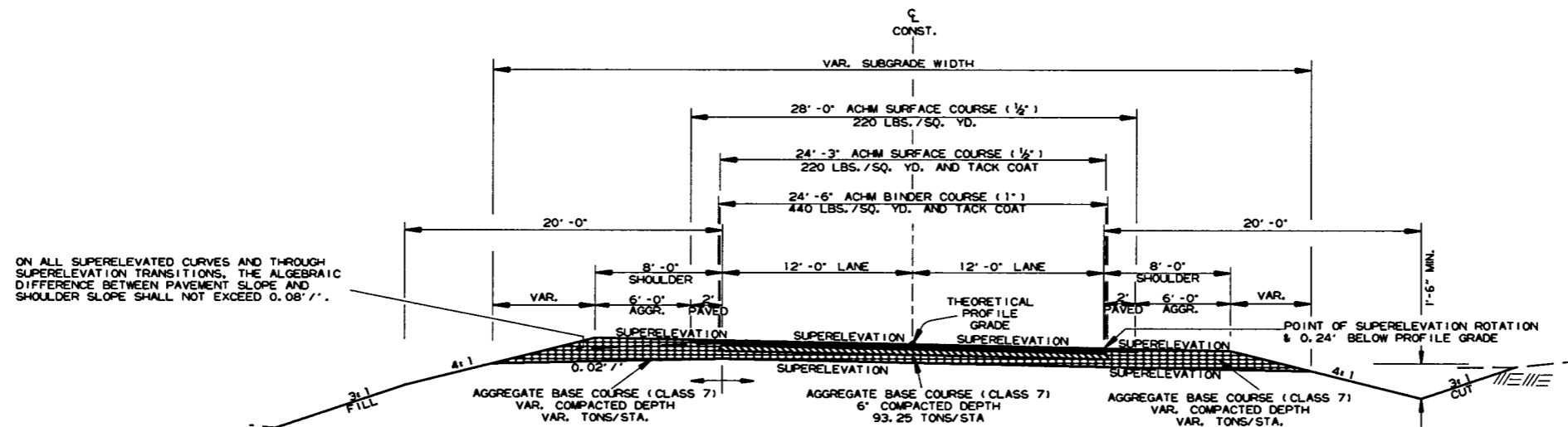
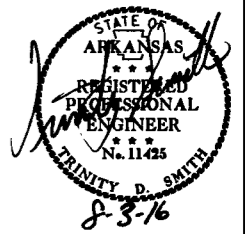


NOTCH AND WIDENING SECTION - TANGENT

STA. 98+23.54 - STA. 99+36.89

DATE REVISED	DATE FILMED	DATE REVISED	DATE FILMED	FED. RD. DIST. NO.	STATE	FED. AID PROJ. NO.	SHEET NO.	TOTAL SHEETS
				6	ARK.			
							4	94

2 TYPICAL SECTIONS OF IMPROVEMENT



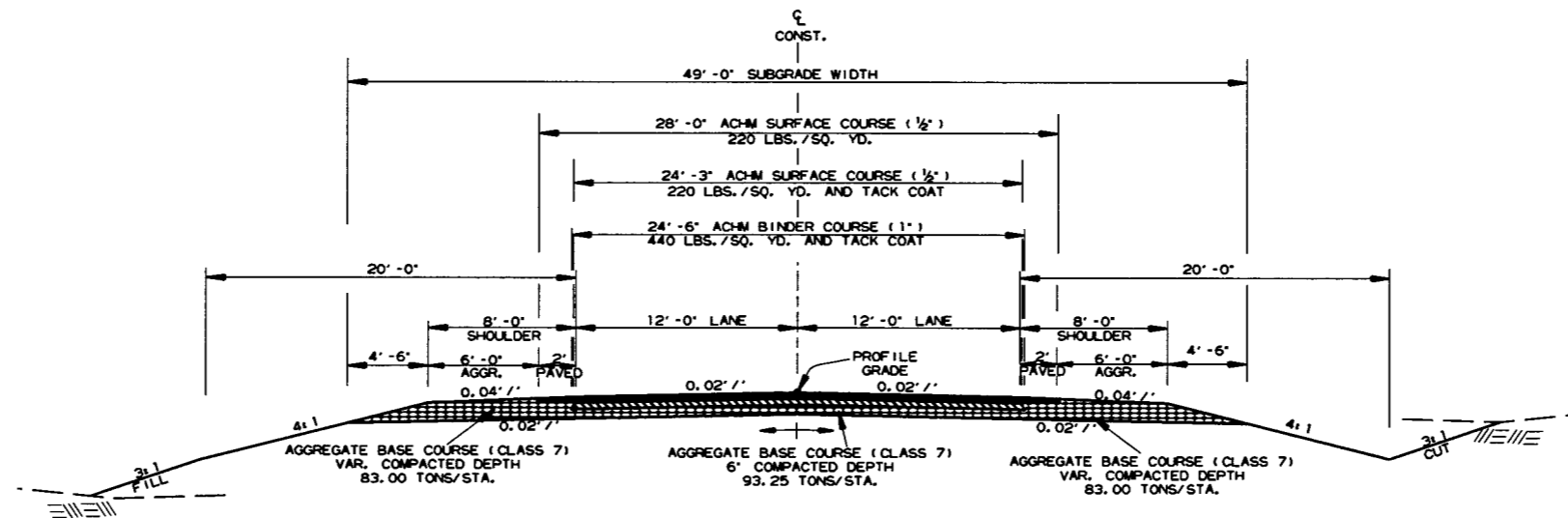
FULL DEPTH SECTION - SUPERELEVATION
 STA. 100+02.08 - STA. 106+92.39
 STA. 108+61.43 - STA. 115+84.32

NOTES:

REFER TO CROSS SECTIONS FOR DEVIATION FROM THE NORMAL SLOPES. NO CHANGES SHALL BE MADE FROM THE PLANNED SLOPES WITHOUT THE APPROVAL OF THE ENGINEER.

THE THICKNESS OF AGGREGATE BASE COURSE SHALL BE WITHIN PLUS OR MINUS ONE INCH OF THE PLAN THICKNESS SHOWN. THE CONTRACTOR WILL CORRECT ANY DEFICIENT THICKNESS THAT DOES NOT MEET TOLERANCE INDICATED. PAYMENT WILL NOT BE MADE FOR MATERIAL PLACED IN EXCESS OF THE TOLERANCE INDICATED.

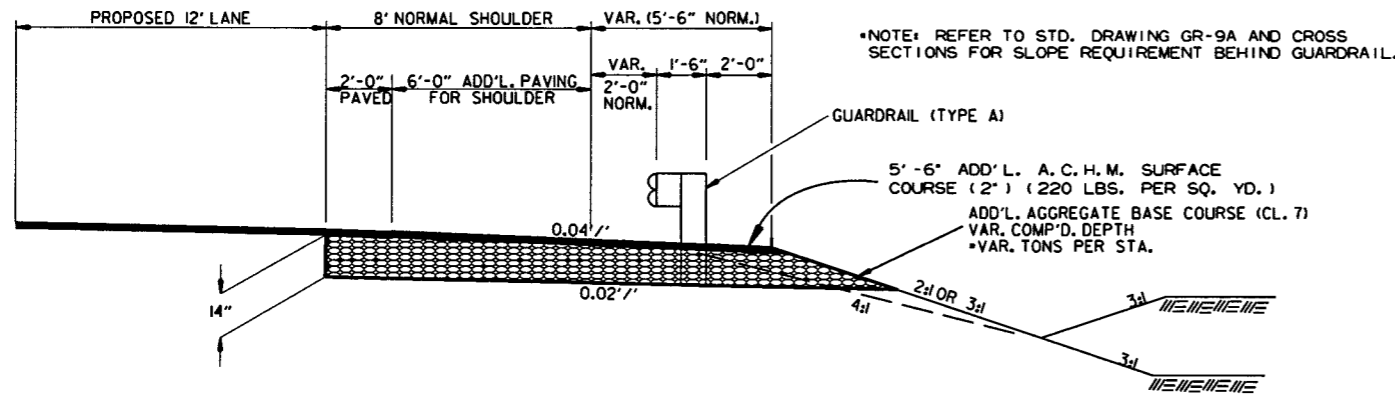
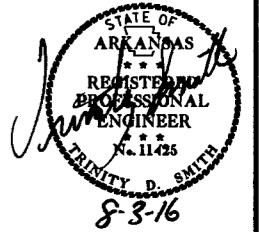
THE FINAL 2" OF SURFACE COURSE IS TO BE PLACED AFTER ALL OTHER COURSES HAVE BEEN LAID. LONGITUDINAL JOINTS SHALL BE AT LANE LINES.



FULL DEPTH SECTION - TANGENT
 STA. 106+92.39 - STA. 107+21.85
 STA. 108+54.13 - STA. 108+61.43

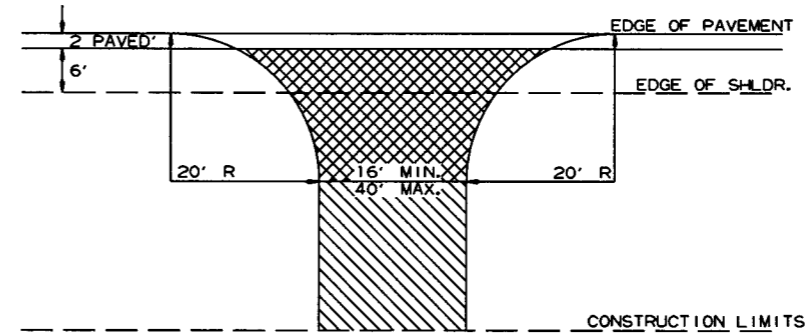
DATE REVISED	DATE FILMED	DATE REVISED	DATE FILMED	FED. PROJ. NO.	STATE	FED. PROJ. NO.	SHEET NO.	TOTAL SHEETS
				6	ARK.		5	94
				JOB NO.	009814			

2 SPECIAL DETAILS



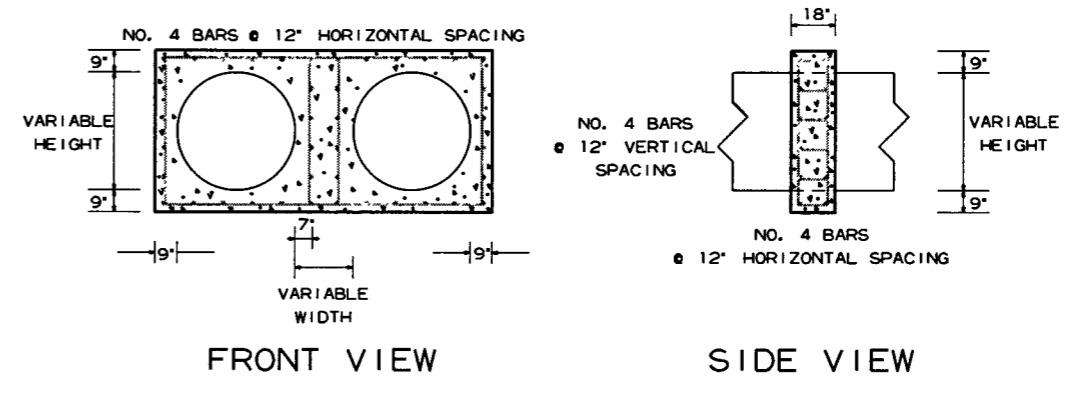
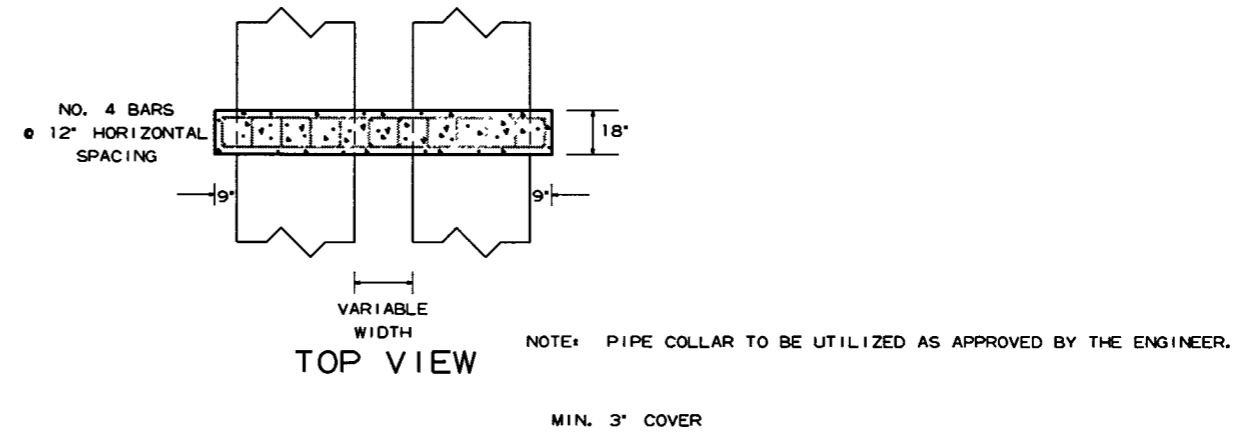
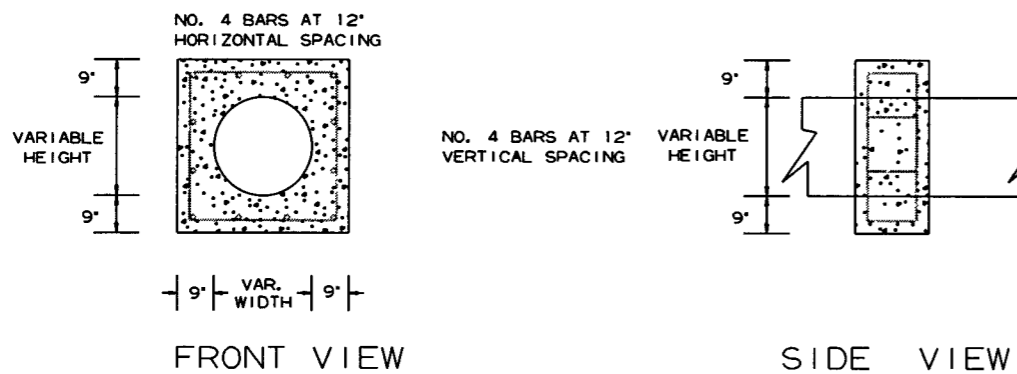
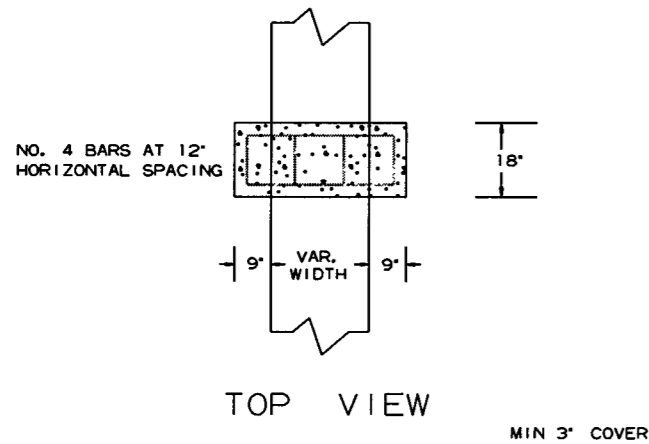
WIDENING FOR GUARDRAIL

NOTE: REFER TO STANDARD DRAWINGS GR-8, GR-9, GR-9A, GR-10, & GR-10A FOR ADDITIONAL INFORMATION.



- ASPHALT CONCRETE HOT MIX SURFACE COURSE (220 LBS. PER SQ. YD.)
- AGGREGATE BASE COURSE (CLASS 7)
- 7' COMP. DEPTH IF ASPHALT DRIVE EXISTS OR 6' CONCRETE IF CONCRETE DRIVE EXISTS.
- AGGREGATE BASE COURSE (CLASS 7)
- 9' COMP. DEPTH OR CONFORM TO EXISTING DRIVEWAY

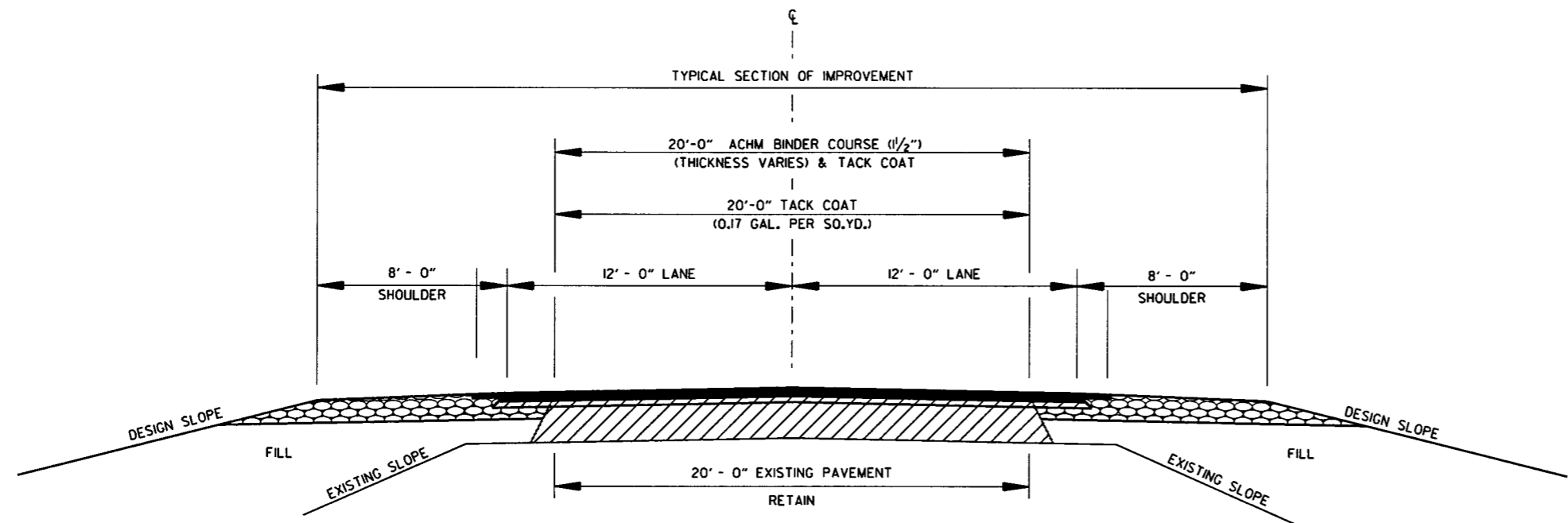
DETAIL FOR DRIVEWAY TURNOUTS (COLLECTORS)



SPECIAL DETAILS

DATE REVISED	DATE FILMED	DATE REVISED	DATE FILMED	FED. RD. DIST. NO.	STATE	FED. AID PROJ. NO.	SHEET NO.	TOTAL SHEETS
				6	ARK.			
				JOB NO.	009814		6	94

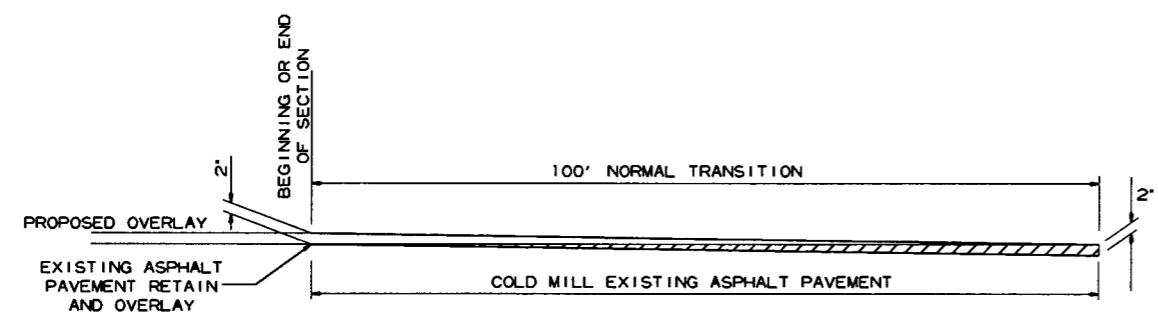
② SPECIAL DETAILS



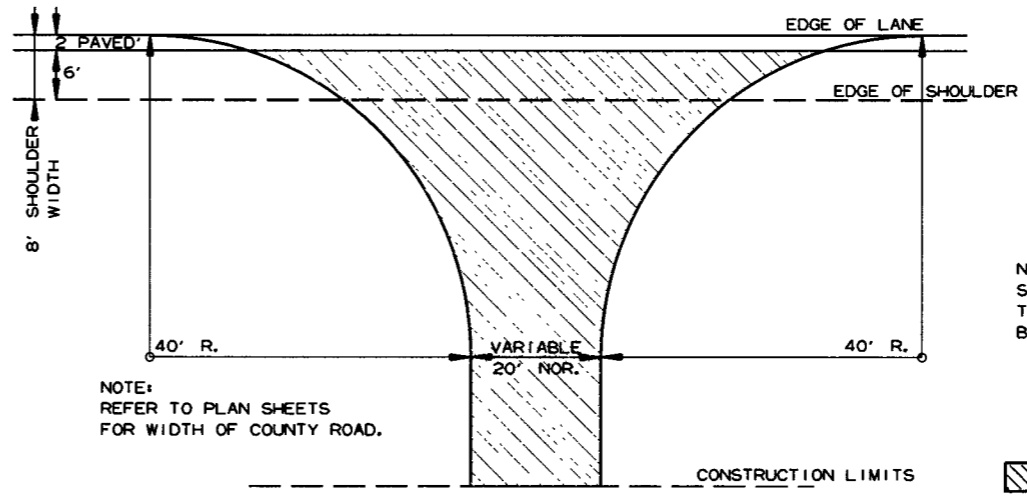
METHOD OF RAISING GRADE

NOTES:

- (1) THIS DETAIL TO BE USED ONLY IF AND WHERE DIRECTED BY THE ENGINEER.
- (2) QUANTITIES FOR METHOD OF GRADE RAISE USING ASPHALT WERE CALCULATED ON THIS PROJECT AT LOCATIONS WHERE THE DISTANCE BETWEEN THE EXISTING ASPHALT ROADWAY AND THE PROPOSED SUBGRADE WAS ONE FOOT OR LESS.
- (3) IN LOCATIONS WHERE THE DISTANCE BETWEEN THE PROPOSED SUBGRADE AND THE EXISTING ASPHALT ROADWAY IS MORE THAN ONE FOOT, SCARIFICATION OF THE EXISTING ASPHALT ROADWAY WILL BE REQUIRED AS STATED IN SECTION 210, SUBSECTION 210.09, OF THE STANDARD SPECIFICATIONS, EDITION OF 2014.



DETAIL FOR TRANSITIONS



NOTE: REFER TO PLAN SHEETS FOR WIDTH OF COUNTY ROAD.

NOTE: TURNOUTS AND PRIVATE DRIVES SHALL BE MODIFIED WHERE NECESSARY TO MEET LOCAL CONDITIONS AS DIRECTED BY THE ENGINEER.

ACHM SURFACE COURSE (1/2") (220 LBS. PER SQ. YD.) AND AGGREGATE BASE COURSE (CLASS 7) 7" COMP. DEPTH.

NOTE: REFER TO PLAN SHEETS FOR WIDTHS OF COUNTY ROADS.

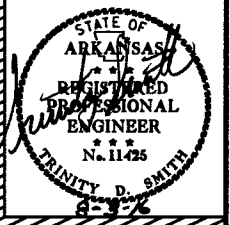
DETAIL FOR COUNTY ROAD TURNOUTS OPEN SHOULDER SECTION

7/20/2016

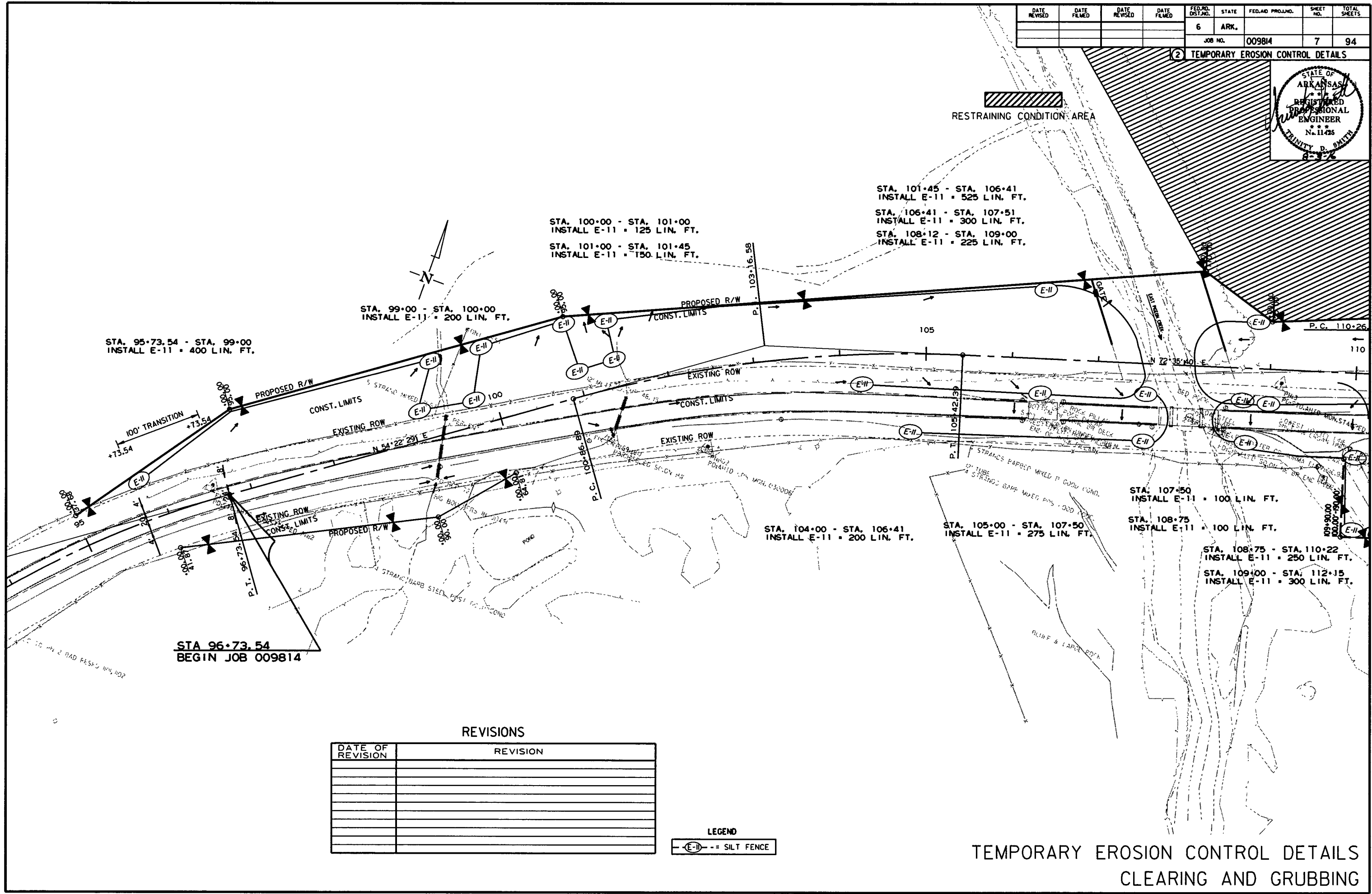
009814.DGN

DATE REVISED	DATE FILMED	DATE REVISED	DATE FILMED	FED. DIST. NO.	STATE	FED. AID PROJ. NO.	SHEET NO.	TOTAL SHEETS
				6	ARK.		7	94
				JOB NO.	009814			

(2) TEMPORARY EROSION CONTROL DETAILS



RESTRAINING CONDITION AREA



STA. 95+73.54 - STA. 99+00
INSTALL E-11 = 400 LIN. FT.

STA. 99+00 - STA. 100+00
INSTALL E-11 = 200 LIN. FT.

STA. 100+00 - STA. 101+00
INSTALL E-11 = 125 LIN. FT.
STA. 101+00 - STA. 101+45
INSTALL E-11 = 150 LIN. FT.

STA. 101+45 - STA. 106+41
INSTALL E-11 = 525 LIN. FT.
STA. 106+41 - STA. 107+51
INSTALL E-11 = 300 LIN. FT.
STA. 108+12 - STA. 109+00
INSTALL E-11 = 225 LIN. FT.

STA. 107+50 - STA. 107+50
INSTALL E-11 = 100 LIN. FT.

STA. 108+75 - STA. 108+75
INSTALL E-11 = 100 LIN. FT.

STA. 108+75 - STA. 110+22
INSTALL E-11 = 250 LIN. FT.

STA. 109+00 - STA. 112+15
INSTALL E-11 = 300 LIN. FT.

STA 96+73.54
BEGIN JOB 009814

REVISIONS

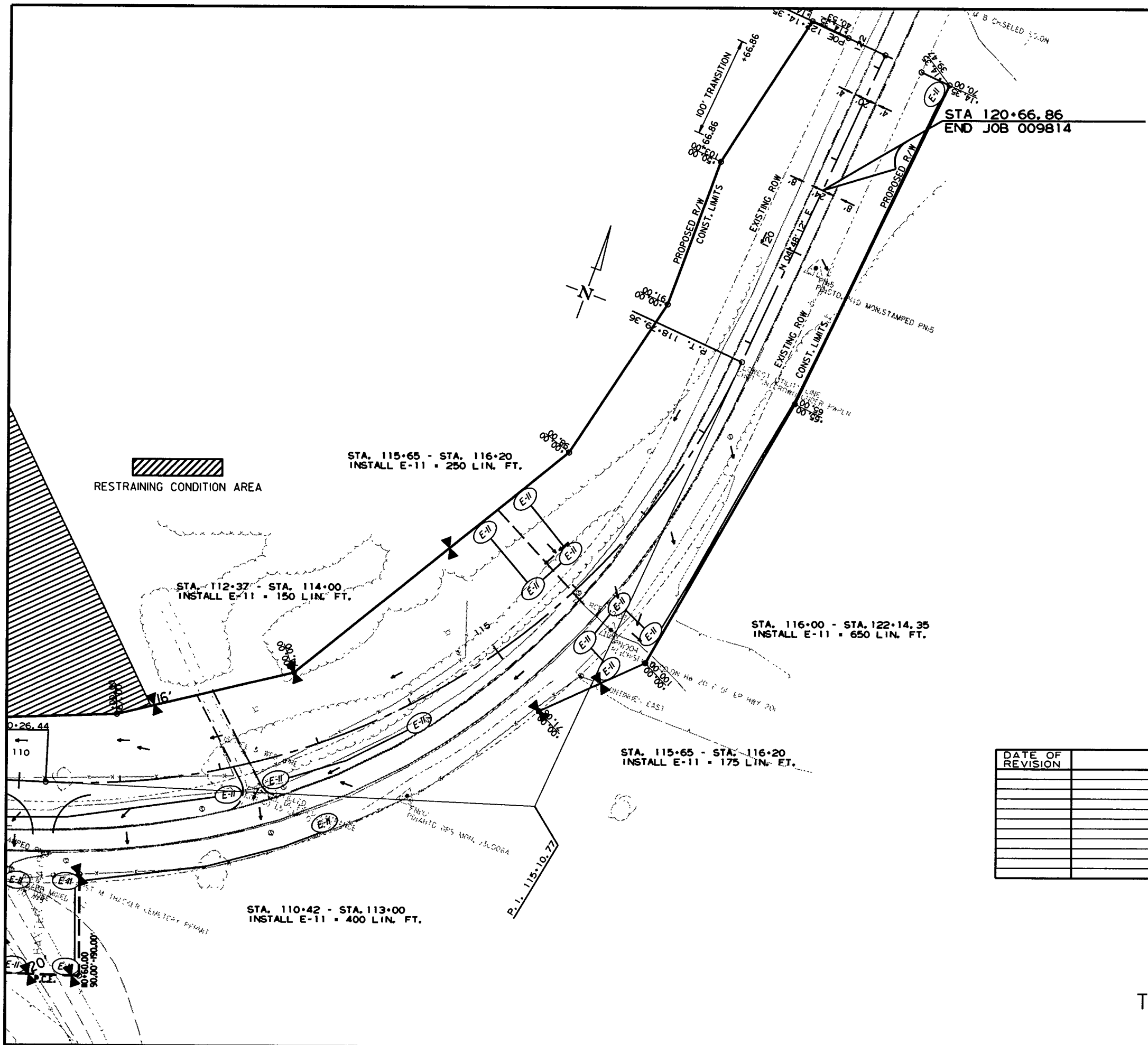
DATE OF REVISION	REVISION

LEGEND
 = SILT FENCE

TEMPORARY EROSION CONTROL DETAILS
 CLEARING AND GRUBBING

DATE REVISED	DATE FILED	DATE REVISED	DATE FILED	FED. RD. DIST. NO.	STATE	FED. AID PROJ. NO.	SHEET NO.	TOTAL SHEETS
				6	ARK.		8	94
				JOB NO.		009814		

② TEMPORARY EROSION CONTROL DETAILS



REVISIONS

DATE OF REVISION	REVISION

LEGEND
 E-11 = SILT FENCE

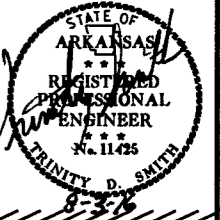
TEMPORARY EROSION CONTROL DETAILS
 CLEARING AND GRUBBING

2/9/2016
 R009814.DCN

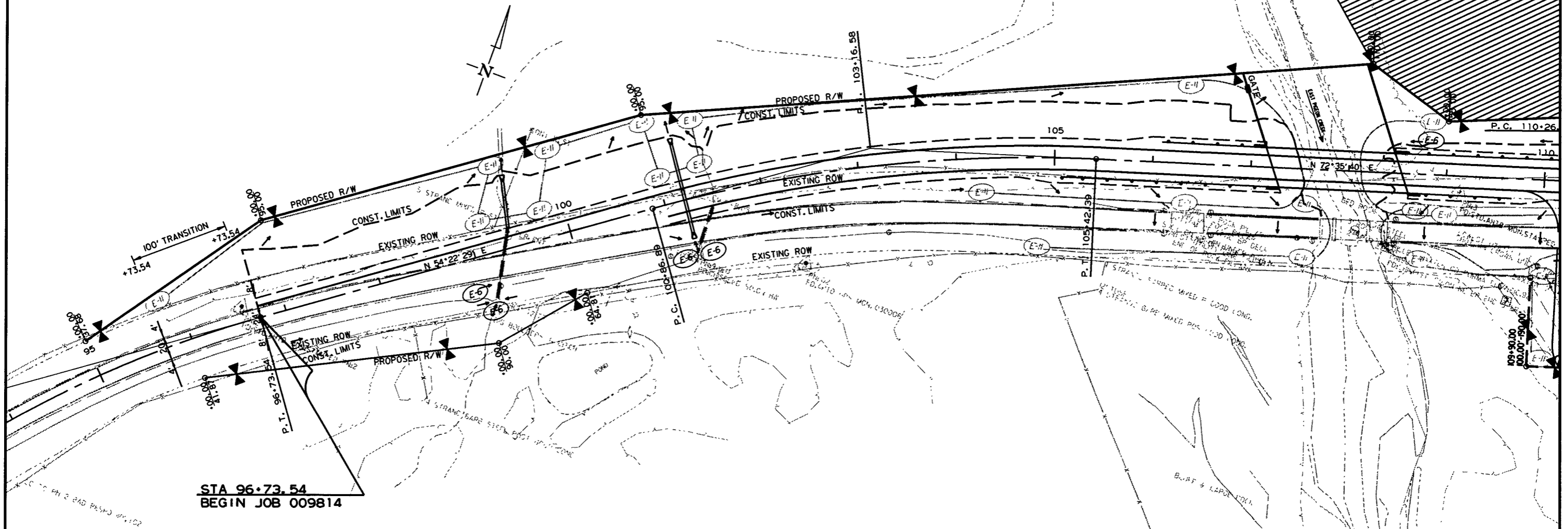
• MAINTAIN ALL EROSION CONTROL DEVICES UNTIL THE END OF THE JOB, UNLESS OTHERWISE SPECIFIED.

DATE REVISED	DATE FILMED	DATE REVISED	DATE FILMED	FED. PROJ. DIST. NO.	STATE	FED. AID PROJ. NO.	SHEET NO.	TOTAL SHEETS
				6	ARK.		9	94
				JOB NO.		009814		

2 TEMPORARY EROSION CONTROL DETAILS



RESTRAINING CONDITION AREA



STA 96+73.54
BEGIN JOB 009814

REVISIONS

DATE OF REVISION	REVISION

LEGEND

- (E-5) = SAND BAGS DITCH CHECKS
- (E-6) = ROCK DITCH CHECKS
- (E-11) = SILT FENCE

TEMPORARY EROSION CONTROL DETAILS
STAGE I

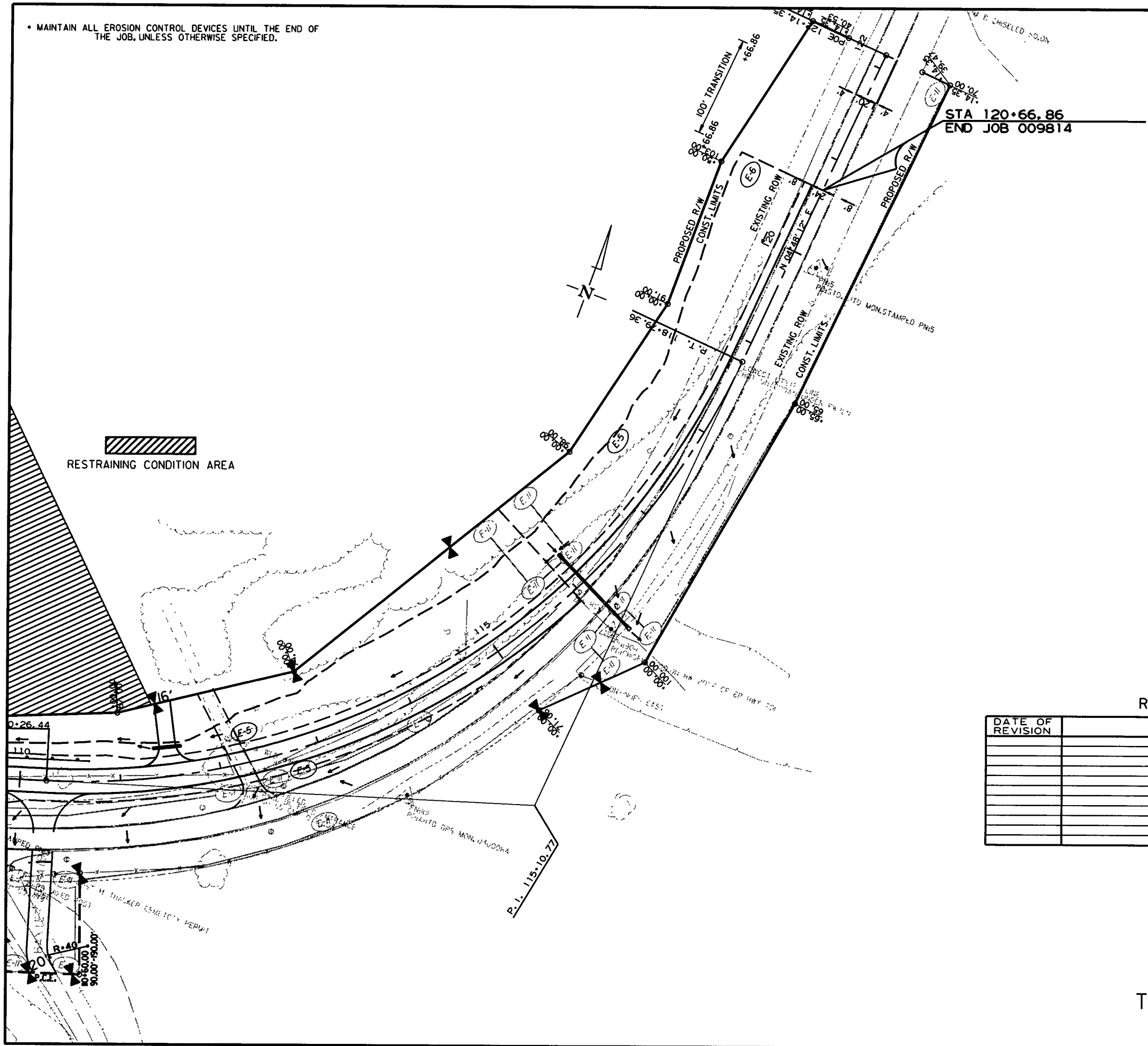
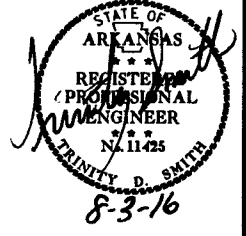
2/9/2016

009814.DGN

• MAINTAIN ALL EROSION CONTROL DEVICES UNTIL THE END OF THE JOB, UNLESS OTHERWISE SPECIFIED.

DATE REVISED	DATE FILMED	DATE REVISED	DATE FILMED	FED. DIST. NO.	STATE	FED. AID PROJ. NO.	SHEET NO.	TOTAL SHEETS
				6	ARK.			
							JOB NO. 009814	10 94

② TEMPORARY EROSION CONTROL DETAILS



REVISIONS

DATE OF REVISION	REVISION

LEGEND

(E-5)	= SAND BAGS DITCH CHECKS
(E-6)	= ROCK DITCH CHECKS
(E-11)	= SILT FENCE

TEMPORARY EROSION CONTROL DETAILS
STAGE I

2/9/2016
R009814.DGN