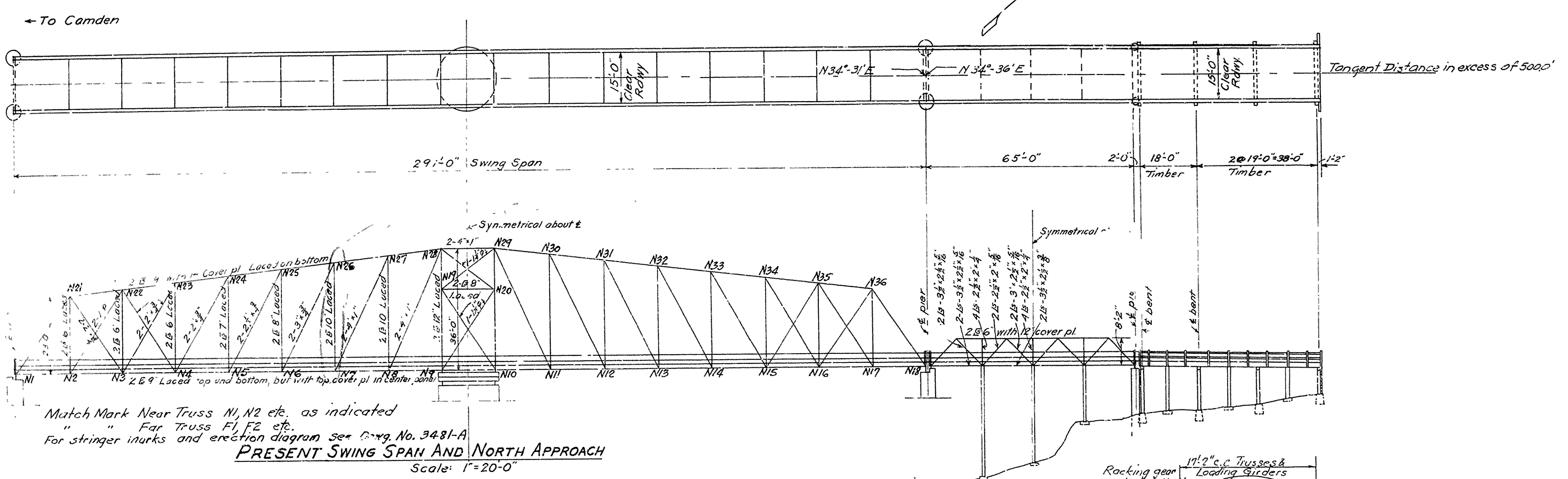
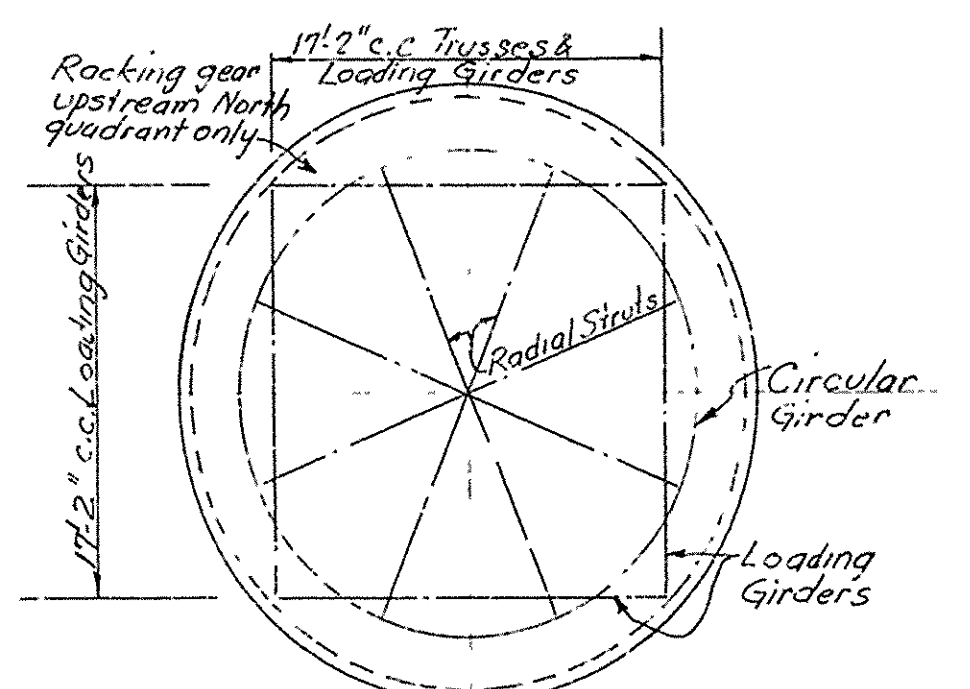


FED. ROAD DIST. NO.	STATE	DA-NR	FISCAL YEAR	SHEET NO.	TOTAL SHEETS
6	ARK.	Unit 4		19	25
Job No.	7305			7	25

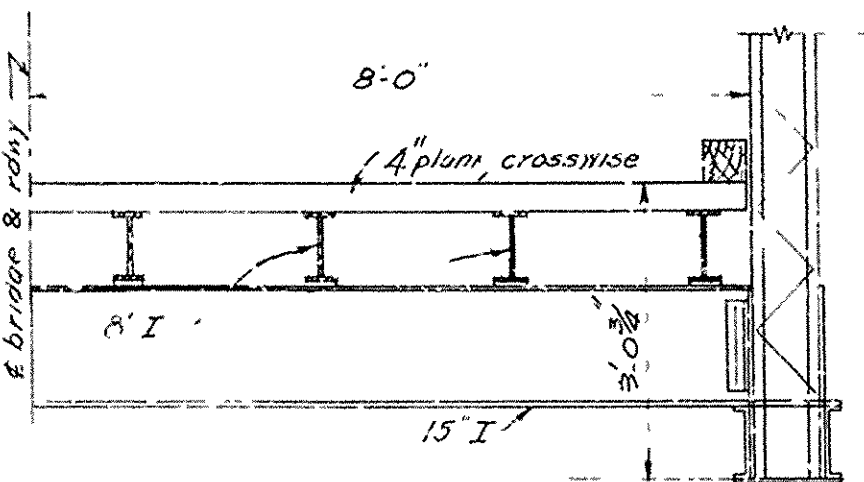


Match Mark Near Truss N1, N2 etc. as indicated  
 " " Far Truss F1, F2 etc.  
 For stringer inurks and erection diagram see Orig. No. 3481-A  
**PRESENT SWING SPAN AND NORTH APPROACH**  
 Scale: 1"=20'-0"

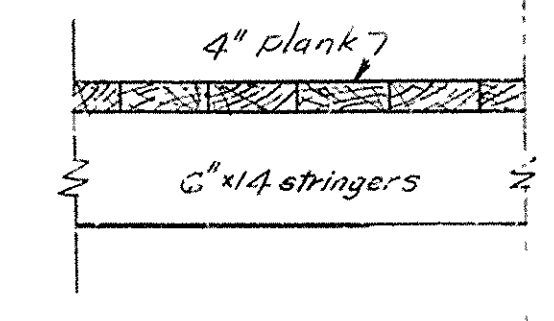
Capacity: {Stringers - 10 Ton Truck  
 Floor Beam - 10 Ton Truck



PLAN AT SWING PIER  
 Scale: 5/8"=1'-0"

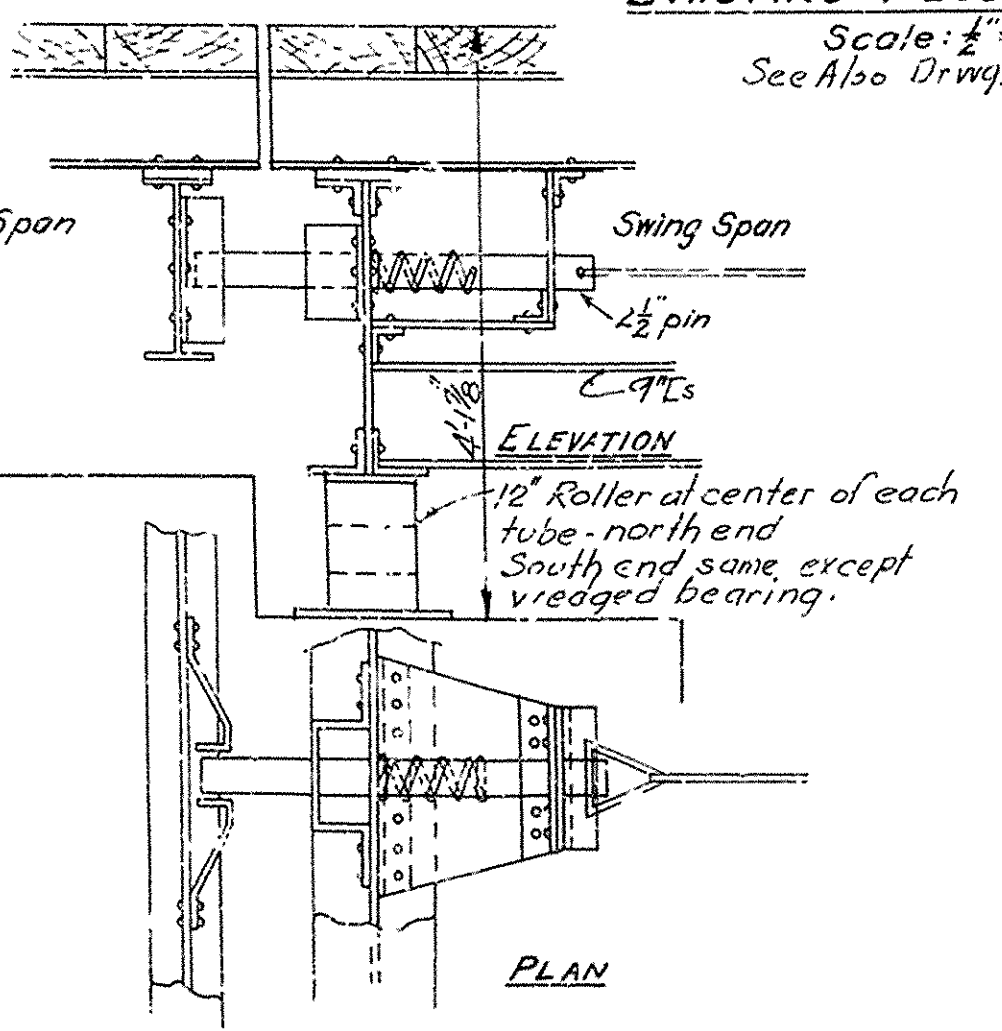


TYPICAL TRUSS CROSS SECTION

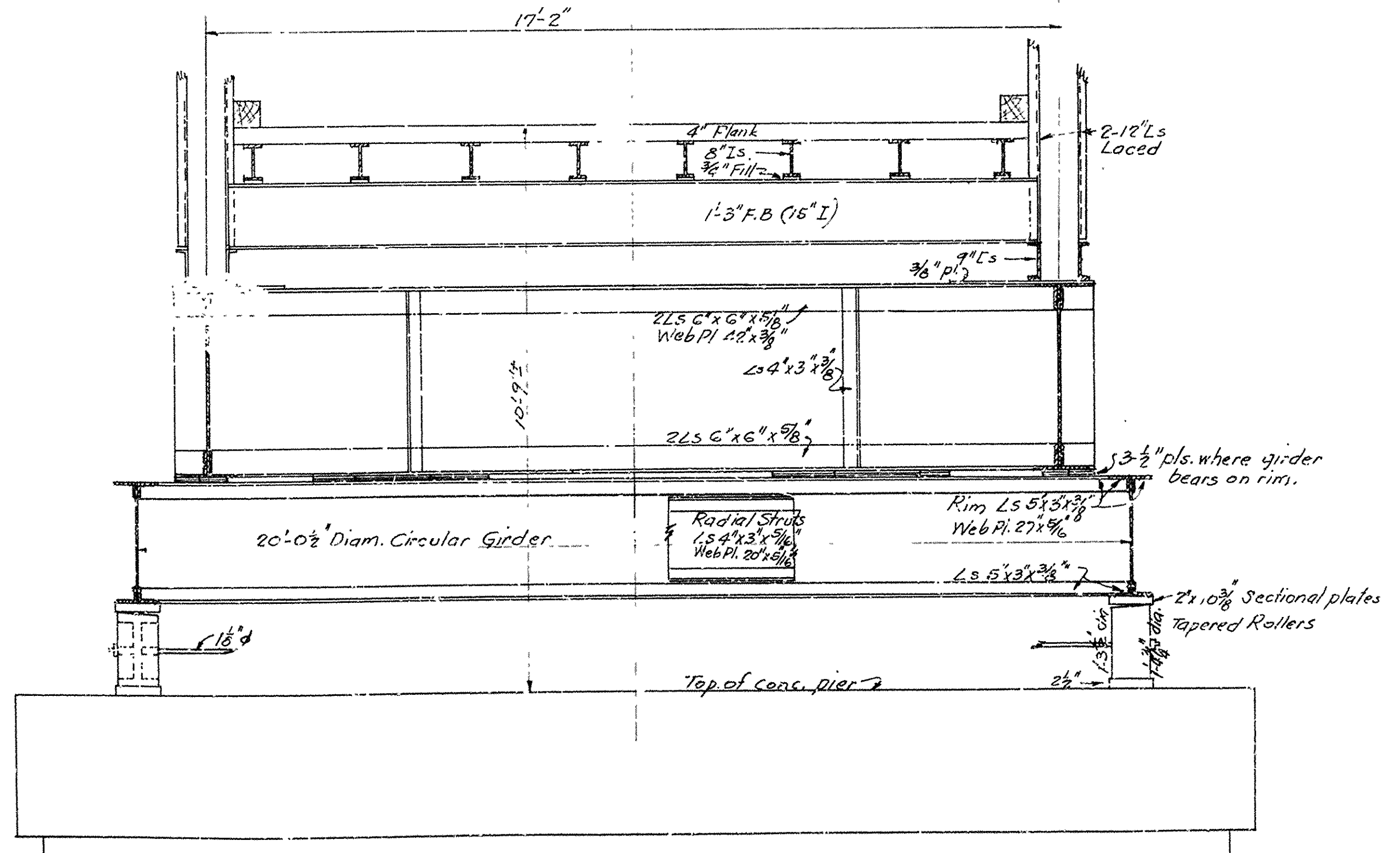


LONGITUDINAL SECTION ON APPROACH

EXISTING FLOOR SYSTEMS  
 Scale: 1/2"=1'-0"  
 See Also Drwg. No. 3481-A



EXISTING SWING SPAN PIN LOCK  
 Scale: 3/4"=1'-0"



DETAILS AT SWING PIER  
 Scale: 1/2"=1'-0"

N.B. Barber  
 CIVIL ENGINEER

Revised 2-8-45  
 11-28-45 for match marking swing span

**DETAILS OF PRESENT SWING SPAN AND NORTH APPROACH**  
 OUACHITA RIVER BRIDGE  
 AT CAMDEN  
 OUACHITA COUNTY  
 ROUTE 79 SEC. 4

ARKANSAS STATE HIGHWAY COMMISSION  
 LITTLE ROCK, ARK.

Drawn By: B.V. Date: 12-24-33  
 Traced By: \_\_\_\_\_ Date: \_\_\_\_\_  
 Checked By: \_\_\_\_\_ Date: \_\_\_\_\_  
 Scale: As noted  
 BRIDGE No. 1085  
 2466 DRAWING No. 3481