

STATE OF ARKANSAS
STATE HIGHWAY DEPARTMENT

FISCAL YEAR	Job No.	SHEET NO.	TOTAL SHEETS
1928	1019	7	4

PLAN OF PROPOSED BRIDGE
OVER
ST. FRANCIS RIVER
CLAY COUNTY

INDEX OF SHEETS

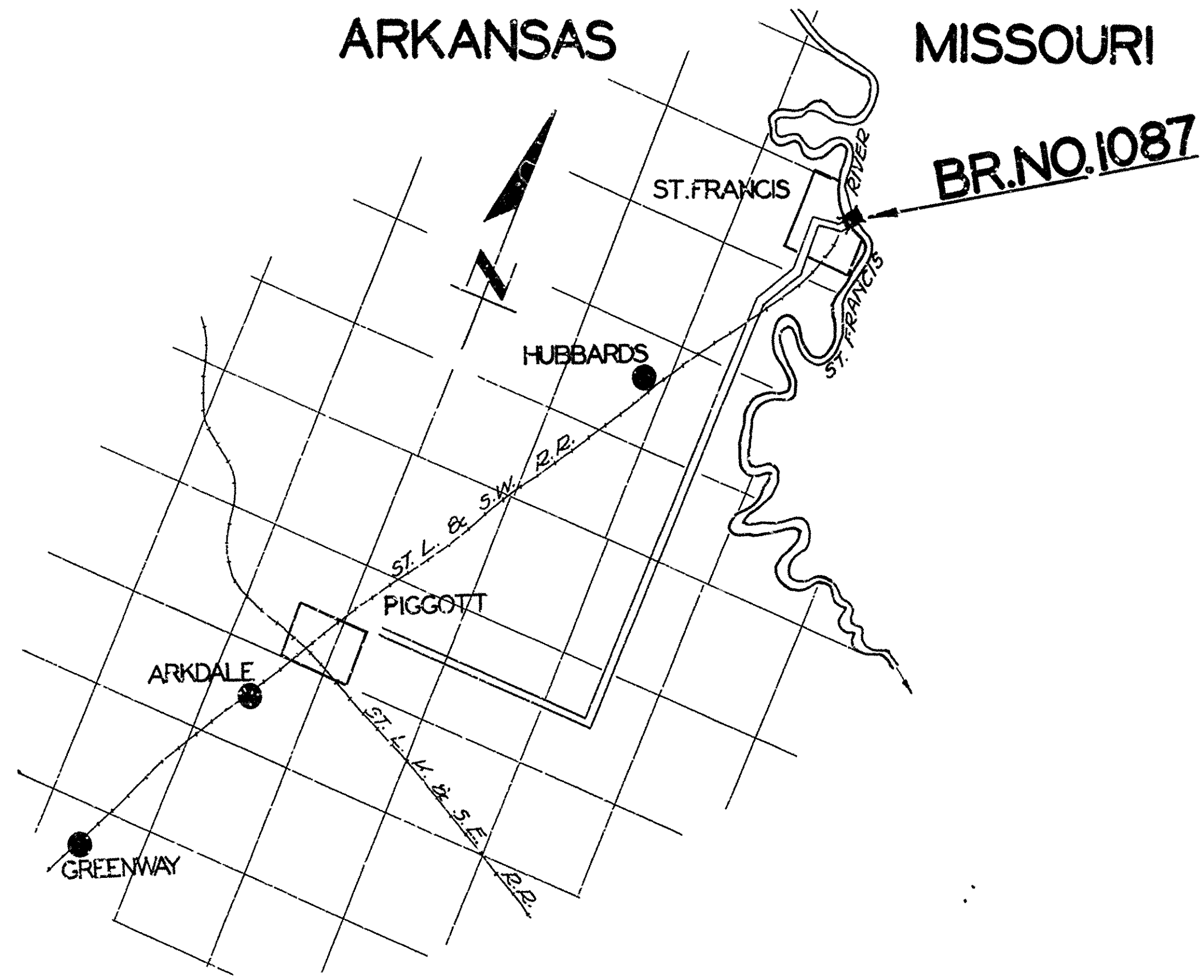
Sheet No.	Dwg. #	Title Sheet.
" 1	1395	Title Sheet.
" 2	1396	Layout Br # 1087.
" 3	1397	Details for Renewal of Br # 1087.
" 4	16	Details of 19'-0" Span Std. Timber Trestle. 19'-0" Roadway.

ROUTE 39 SEC. 3
JOB NO 1019
FEDERAL AID PROJECT No.

QUANTITIES

Item No.	Description	Quantity	Unit
17	Borrow	300	Cu. Yds
52	Untreated Timber	2,781	M.B.M.
52	Treated "	79,080	M.B.M.
56	Structural Steel in Beams	12,475	LBS
67	Treated Timber Piling	2,504	Lin. Ft.
S.P.	Cut Offs	168	" "
69	Rip Rap 1 ft thick	230	Sq. Yds
S.P.	Removing I-Beam span, timber trestle, steel tower & footings, and timber floor on half of truss span; cleaning & painting all structural steel in Truss & I-Beam spans; making alterations to pier.		
			Lump Sum

Replaced Timber Piling Cut off	1	
Repair of Old Steel Span	2	
Treated Br Timber Supplementing P. 522	1	



LAYOUT
Scale: 1"=1 MI.

GROSS LENGTH OF PROJECT 458'-2" = 0.087 Mile
NET LENGTH OF PROJECT

APPROVED
COMMISSIONER - STATE LANDS, HIGHWAYS AND IMPROVEMENTS

APPROVED
STATE HIGHWAY ENGINEER

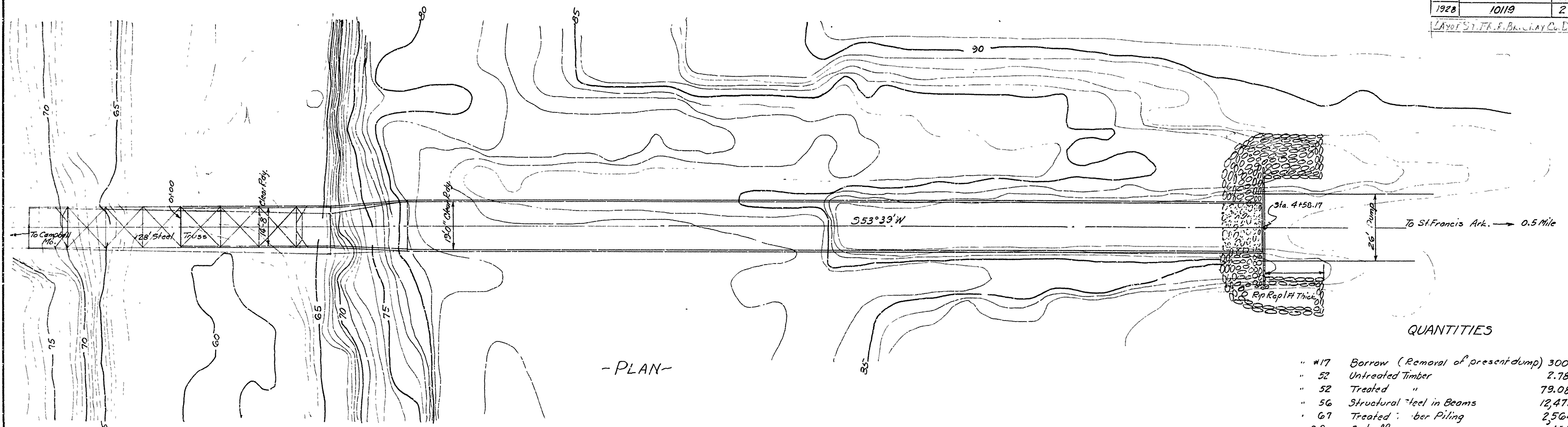
RECOMMENDED FOR APPROVAL
DISTRICT ENGINEER - U. S. BUREAU OF PUBLIC ROADS

RECOMMENDED FOR APPROVAL
CHIEF ENGINEER - U. S. BUREAU OF PUBLIC ROADS

APPROVED
DIRECTOR - U. S. BUREAU OF PUBLIC ROADS

M.B. Harris
BRIDGE ENGINEER

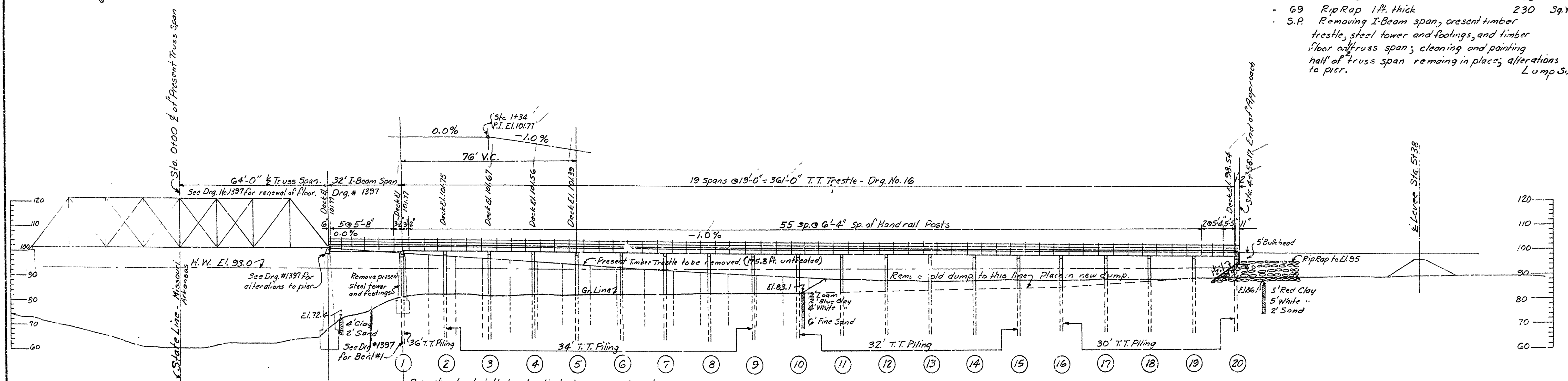
FISCAL YEAR	Job No.	SHEET No.	TOTAL SHEETS
1928	10119	2	4
LAYOUT ST. FRANCIS RIVER BRIDGE, CLAY CO., ARK.			



- PLAN -

QUANTITIES

#17	Borrow (Removal of present dump)	300	Cu Yds
#52	Untreated Timber	2,781	M.B.M.
#52	Treated "	79,080	M.B.M.
#56	Structural steel in Beams	12,475	LBS.
#67	Treated Timber Piling	2,564	Lin. Ft.
S.P.	Cut offs	168	" "
#69	Rip Rap 1 ft. thick	230	Sq. Yds.
S.P.	Removing I-Beam span, present timber trestle, steel tower and footings, and timber floor with truss span; cleaning and painting half of truss span remaining in place; alterations to pier.		Lump Sum.



- ELEVATION -

Present timber floor to be removed and floor to be renewed as per Drg. #1397. All steel in span to be cleaned and painted. Pier to be altered due to raising stringers in end panel.

Present I-Beam span to be removed and strengthened by additional I-Beam stringers. See Drg. No.

Present untreated timber trestle to be removed and replaced with Treated Timber Trestle - Drg. #16

B.M. Elev. 90.71 R.R. spike in 16" Walnut 100' West Sta. G+00
 B.M. " 87.07 U.S.G.S. B.M. on Mo. side of river
 Note: Lengths of piling shown are for estimating quantities only. Actual lengths to be determined in the field.

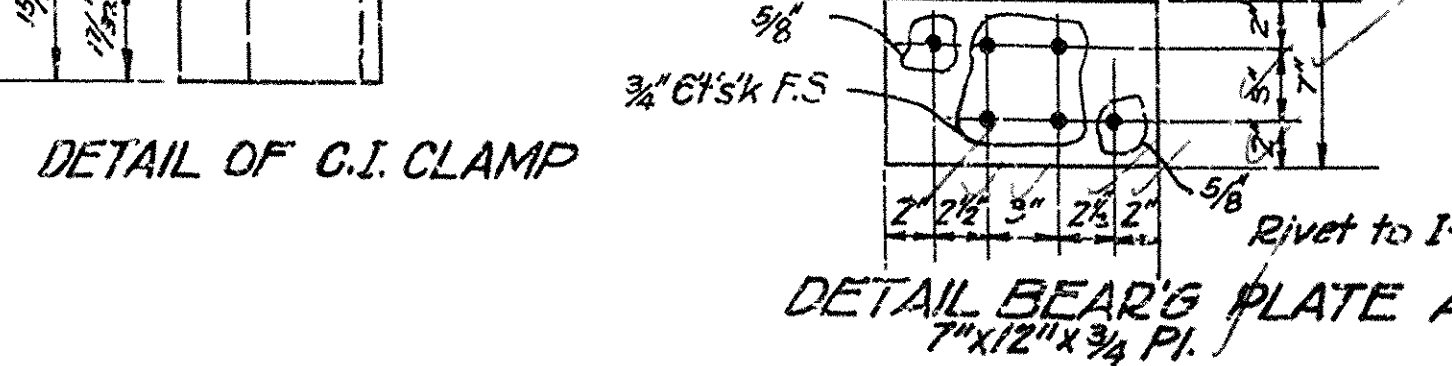
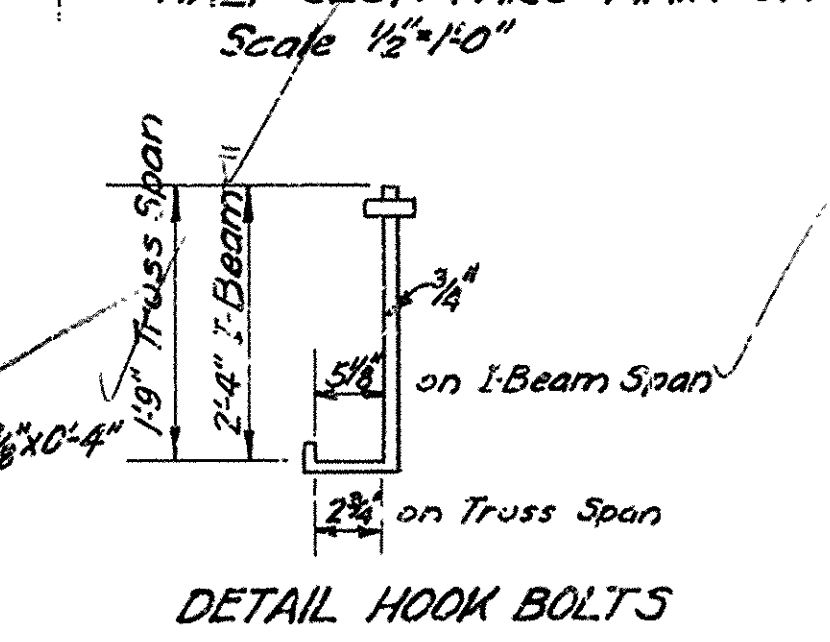
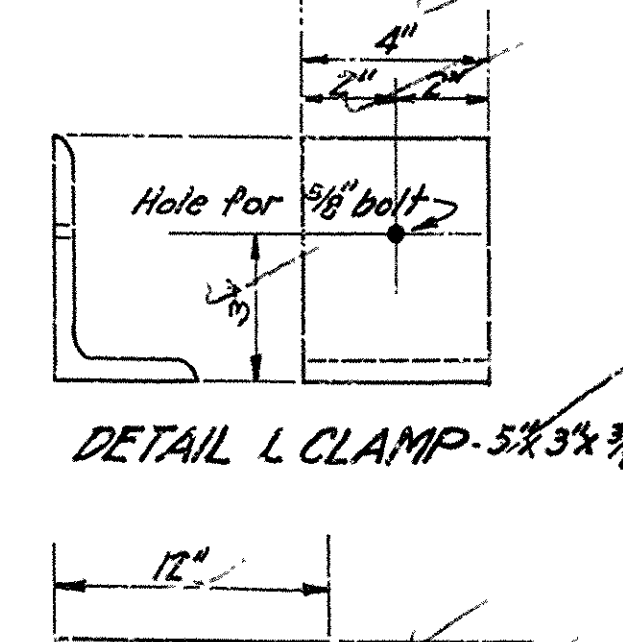
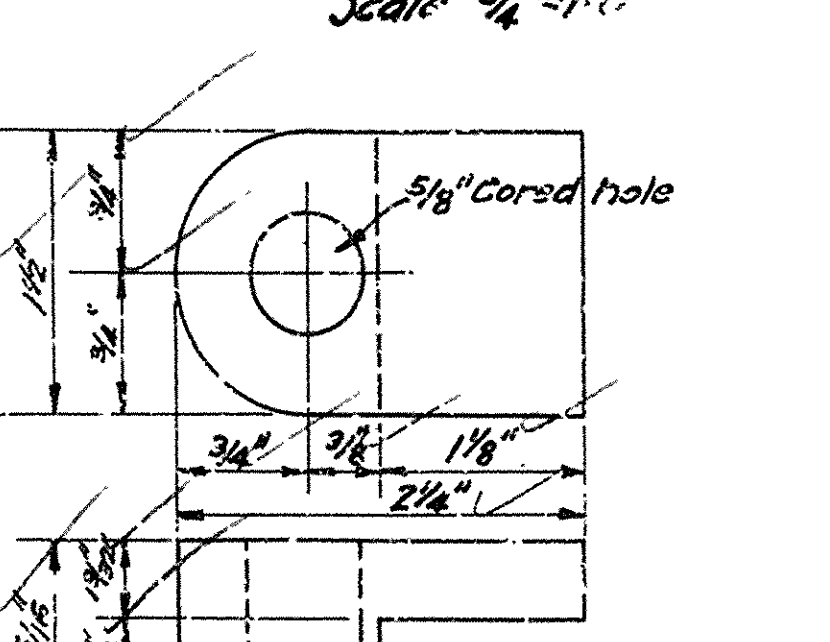
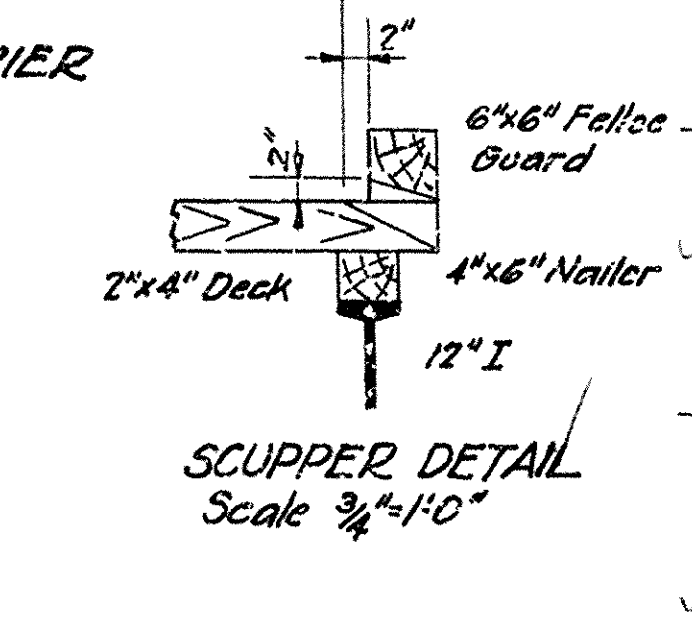
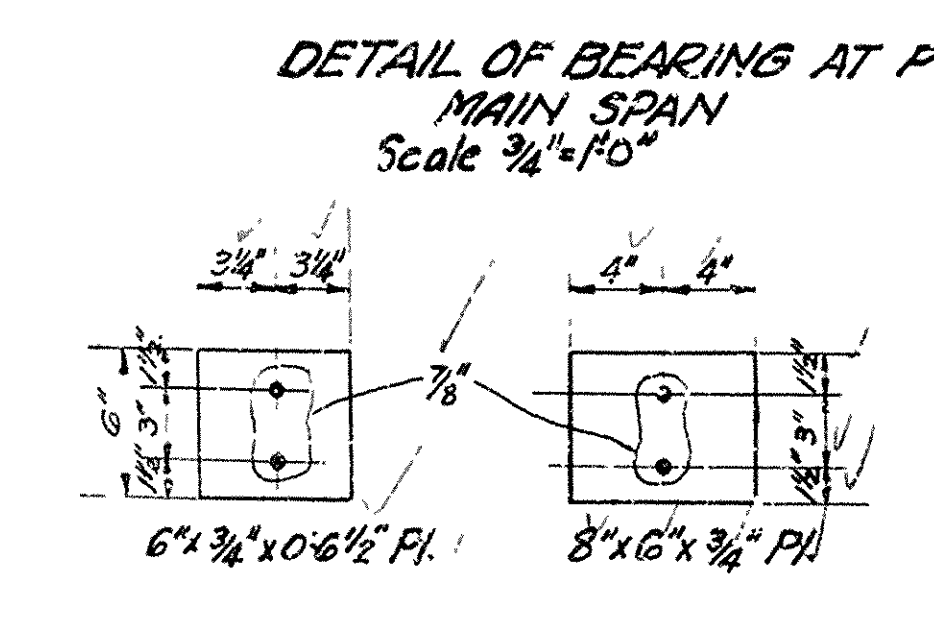
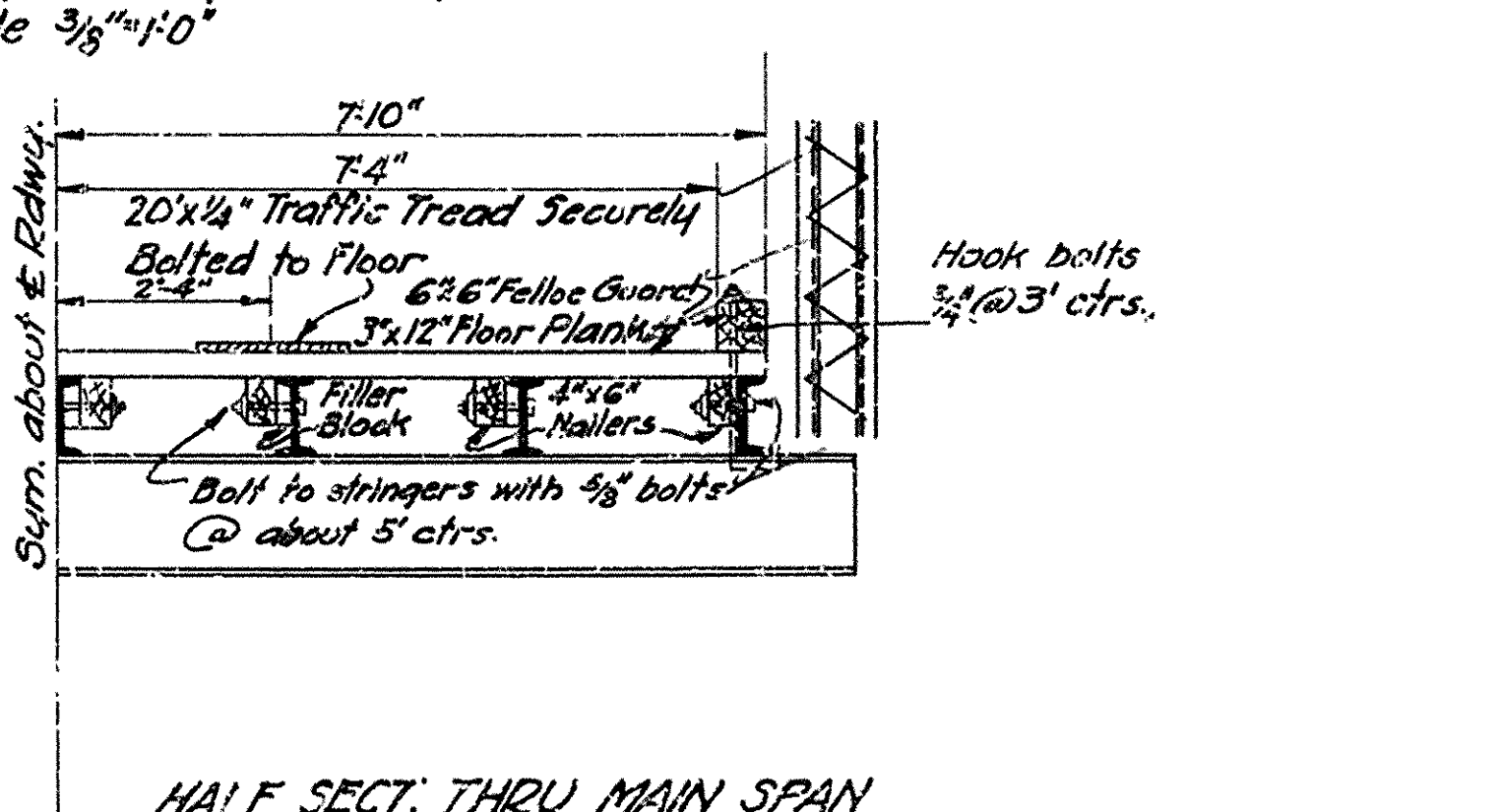
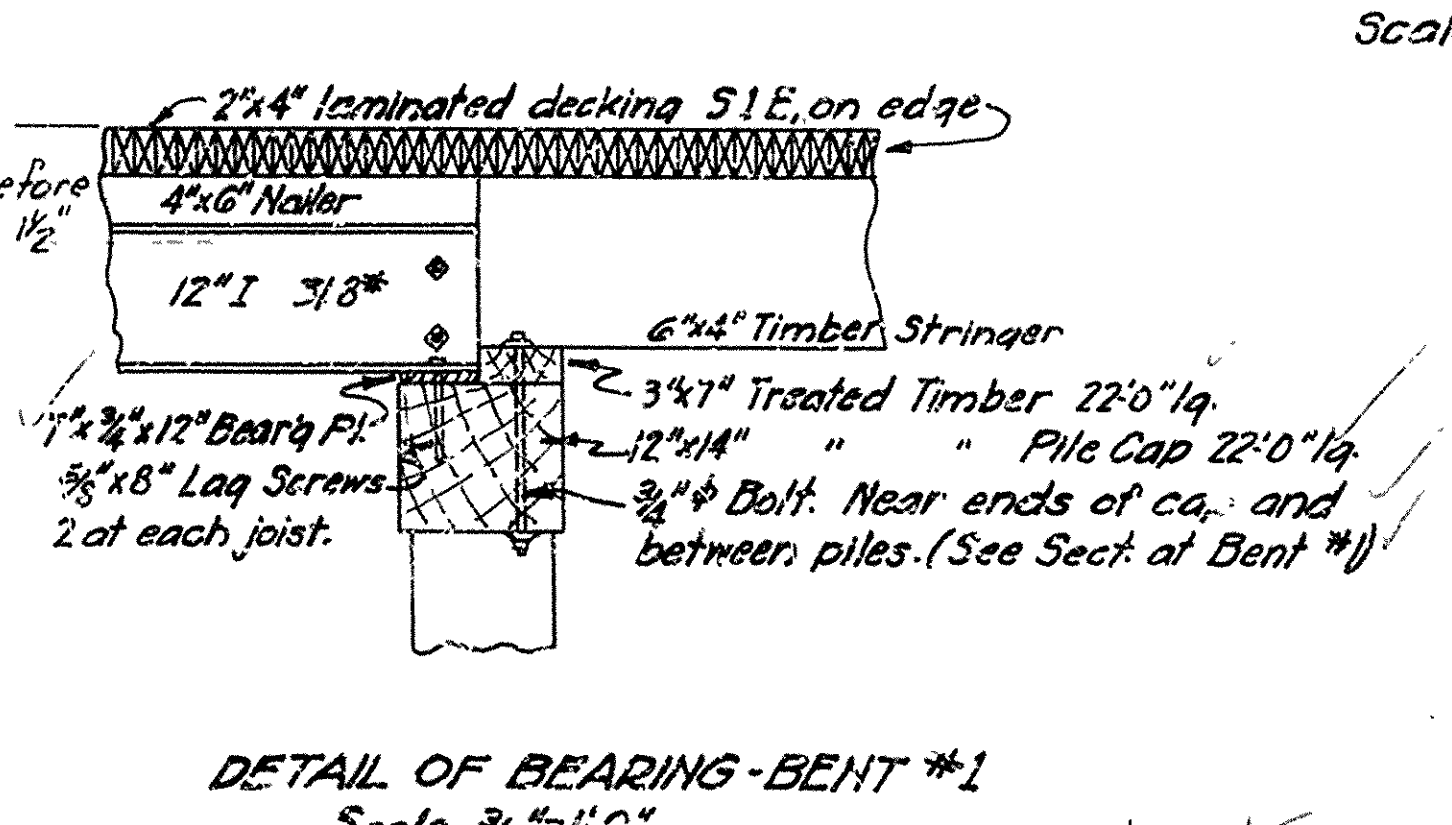
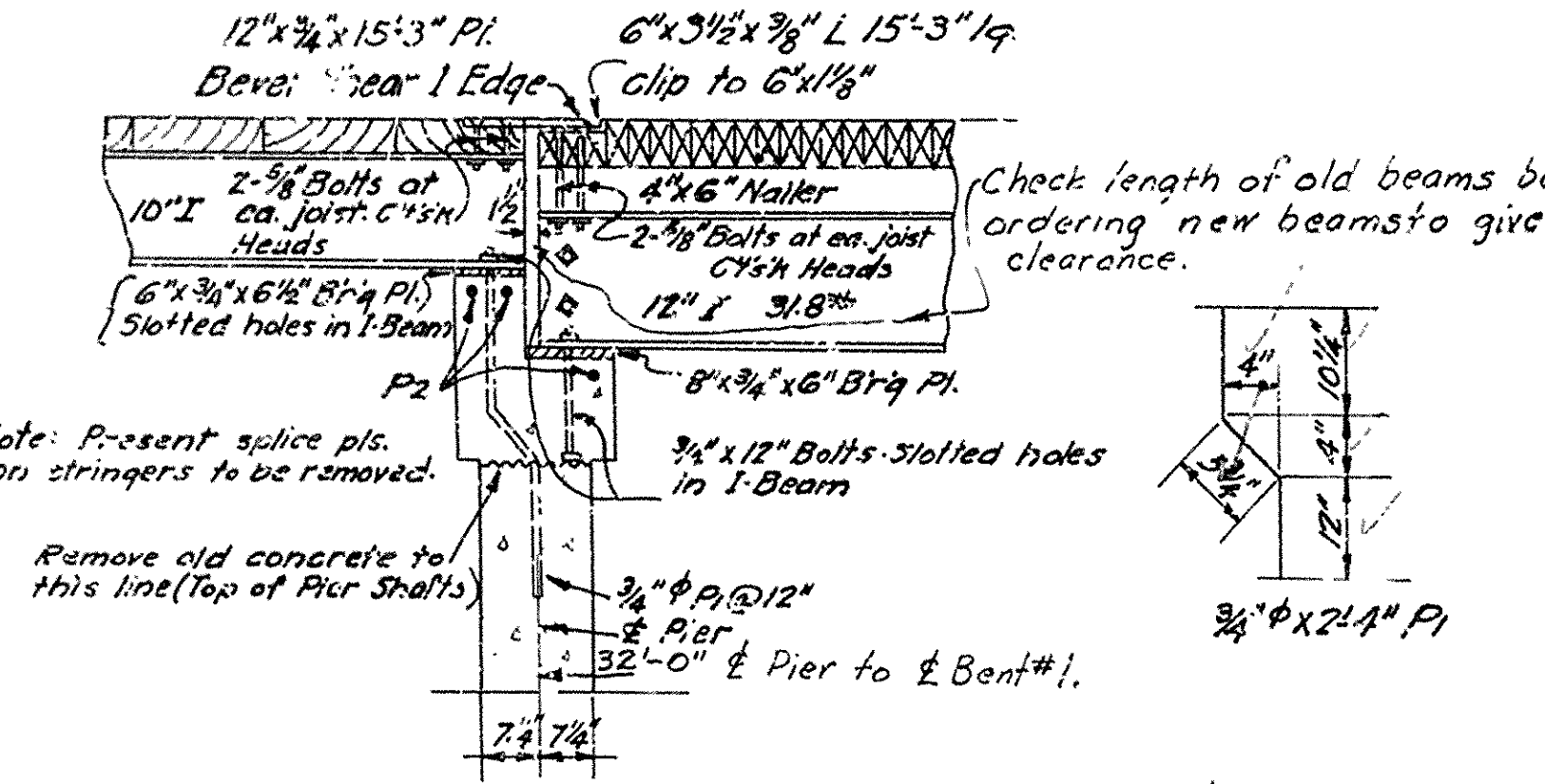
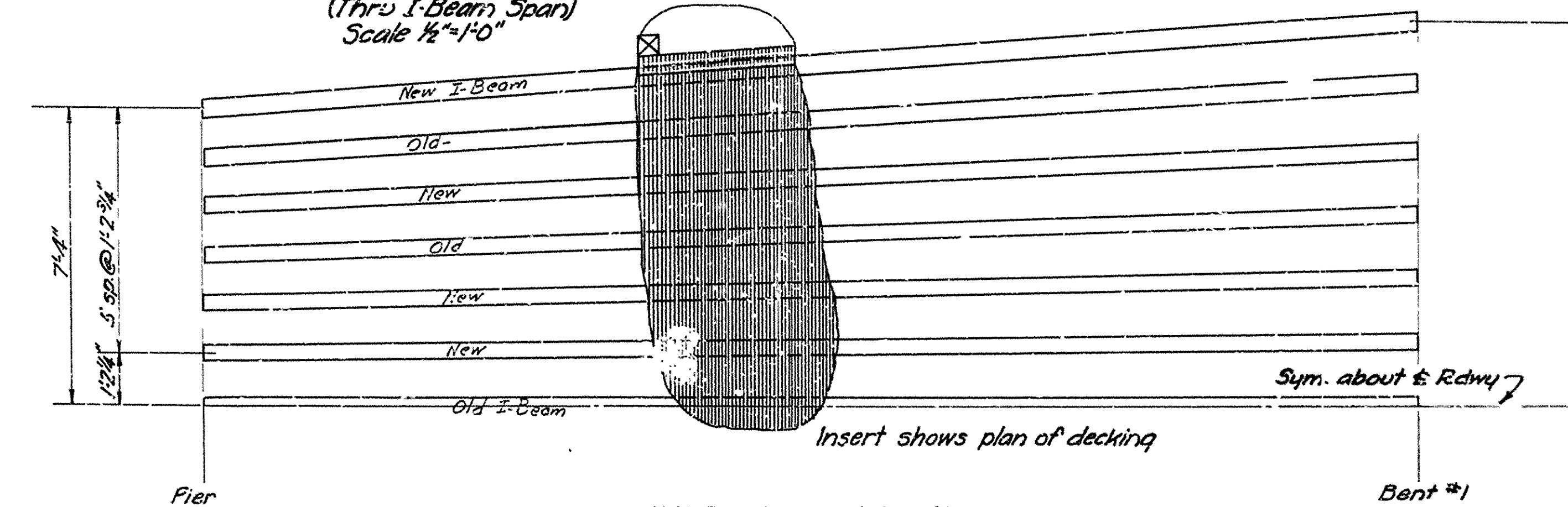
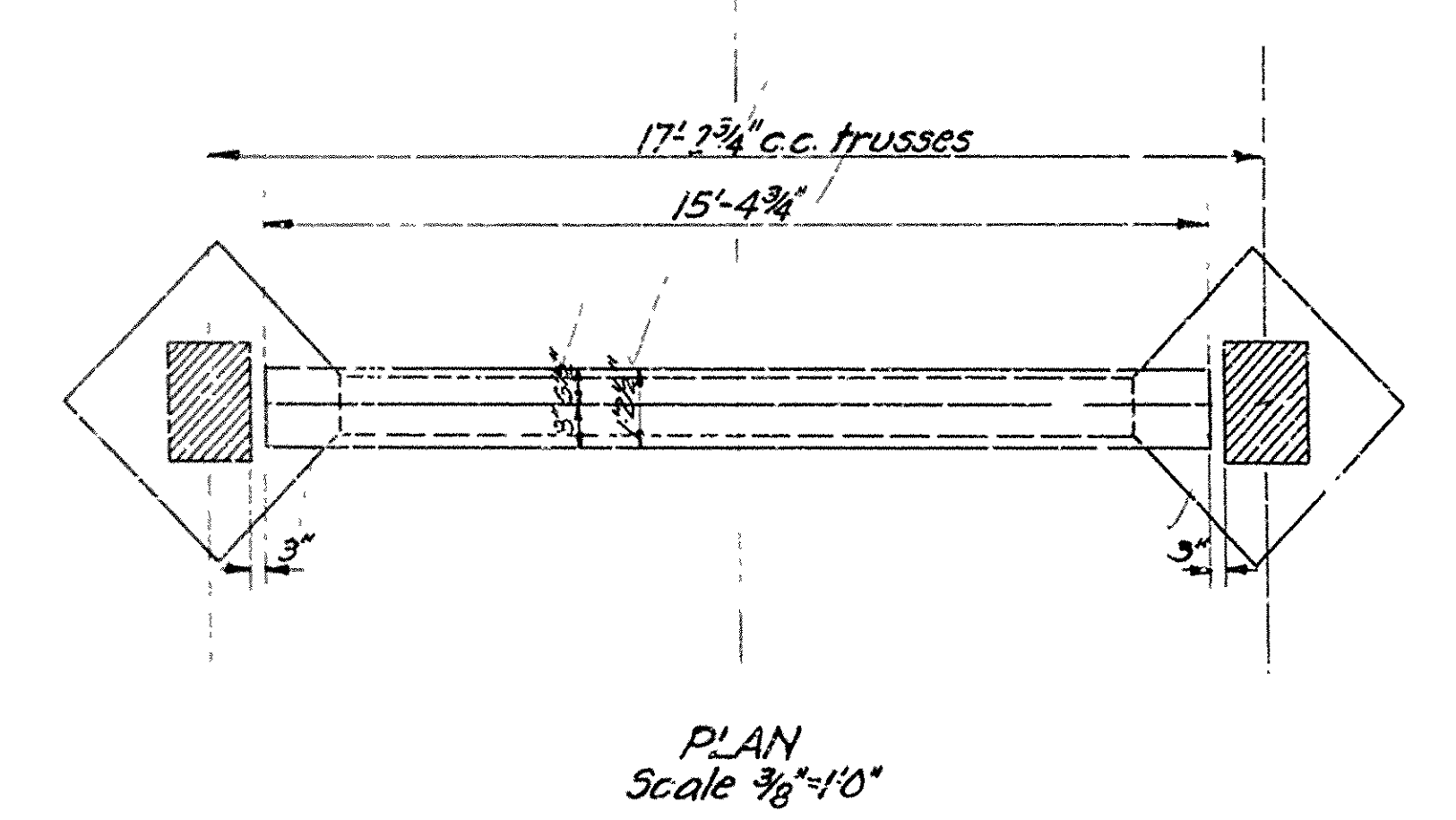
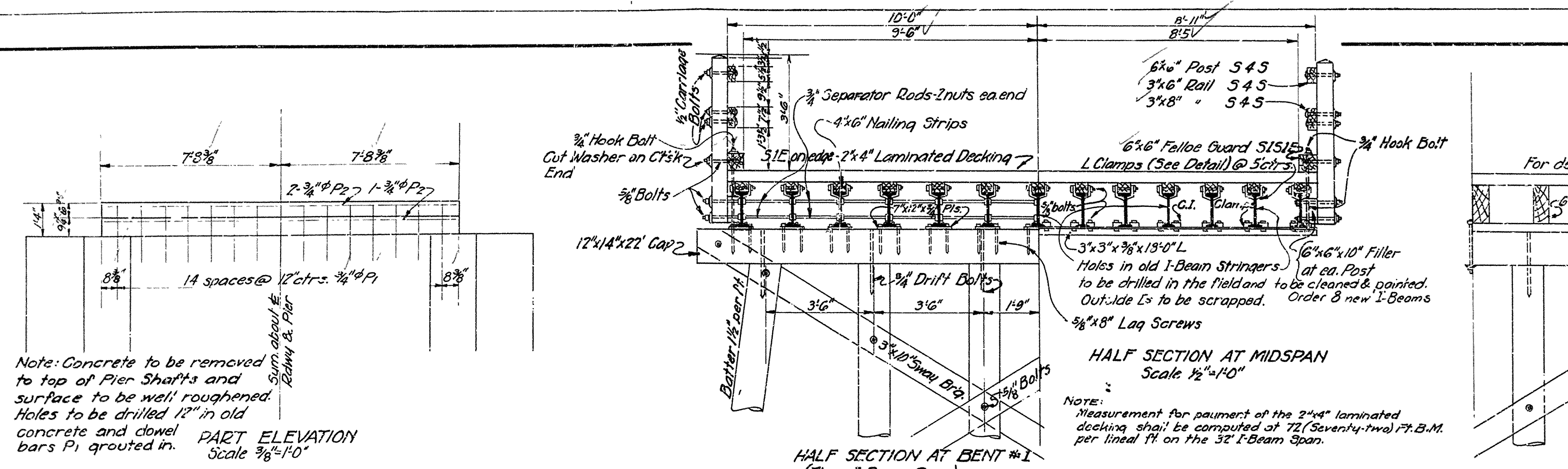
LAYOUT
 BRIDGE OVER ST. FRANCIS RIVER.
 CLAY CO.
 ROUTE 39 SEC. 3
 ARKANSAS STATE HIGHWAY DEPARTMENT
 LITTLE ROCK, ARK.

Drawn By: L.B.C. Date: 2-2-29
 Traced By: L.B.C. Date: 2-9-29
 Checked By: _____ Date: _____
 BRIDGE NO. 1087 DRAWING NO. 1396

M.B. Bannister
 BRIDGE ENGINEER

Scale: 1 in. = 20 ft.

FISCAL YEAR	Job No.	SHEET NO.	TOTAL SHEETS
1928	1019	3	4
DESIGNED BY: [Signature]			



NOTES

Runway: 2" 20"x1/4" plates, checked or otherwise deformed, to be provided for runway fasten to floor planks with 1/2" carriage bolts. One line of bolts along each side of plating and 1" from edge and at 20" centers. Bolts to have lock washer under nut, and square shank under head. Plates to be punched with square holes to match shank. Details of plates to be submitted for approval. Floor planks to be adged where necessary to afford bearing of plates. Prior to placing plates, that portion of the floor is to be treated with a heavy coat of hot asphalt or tar.

Contractor to verify dimensions of I-Beam span in field before ordering new steel. Detail shop drawings for 32' I-Beam span to be submitted for approval before fabrication of steel.

2"x4" Laminated Decking S1E. Each piece to be nailed to each adjacent piece once between each stringer with 30d nails. Each piece to be nailed to alternate nailers with 20d nails. Alternate pieces to be nailed to alternate nailers. Random length pieces of 2"x4" decking may be used under the following conditions:

1. Each joint to be made on stringers.
2. Each piece to cover at least 3 stringers.
3. No more than one joint in any length (lamina).
4. Each joint to be followed by at least 3 full length pieces.

Use sway bracing on all bents of 5'-0" or over in height. Use malleable or cast iron washers on both ends of machine bolts unless noted.

All timber and plating, except 3"x6" and 3"x8" rail members, to be treated treatment to be by spray call process, and in accordance with paragraph 52.3(d) of Ark. Std. Specifications.

3"x6" and 3"x8" rail members shall be untreated, seasoned, dressed lumber, given three coats of paint in accordance with paragraph 52.3(d) of Spec. Specifications: Ark. State Road and Bridge Spec, Adopted May 30, 1925

Note:
Traffic Tread to be paid for as Structural Steel.

DETAILS FOR RENEWAL OF BR. OVER ST. FRANCIS R. CLAY COUNTY ROUTE 39 SEC. 3 ARKANSAS STATE HIGHWAY DEPARTMENT LITTLE ROCK, ARK.

Drawn By: L.P.C. Date: 2-22-29
Traced By: J.A. Date: 2-19-29
Checked By: R.E.L. Date: 2-19-29

BRIDGE NO. 1057 DRAWING NO. 1397

M.B. [Signature]
BRIDGE ENGINEER