

FED. DIST. NO.	STATE	FED. AID PROJ. NO.	FISCAL YEAR	SHEET NO.	TOTAL SHEETS
6	ARK.	130B	1930	1	14

STATE OF ARKANSAS
STATE HIGHWAY COMMISSION

INDEX OF SHEETS

Sheet No.	Drwg No.	Title Sheet
2	2797	Layout of Br. No. 1118
3	2798	Details of Bents 1 & 2, Br. 1118
4	2800	" " " " " " " "
5	2801	" " " " " " " "
6	2418	Standard 100 ft. Pony Truss, 20'-0" Rdwy.
7	2274	" " 35 ft. R.C.D. Span, 20'-0" "
8	2802	Layout of Br. No. 1317
9	2803	Details of Piers No. 1, 2, & 3, Br. 1317
10	2804	" " " " " " " "
11	2805	Layout of Br. No. 1318
12	2806	Details of Piers No. 1 & 2
13	2807	" " " " " " " "
14	2272	Standard 30 ft. R.C.D. Span, 20'-0" Rdwy.

Federal Aid Markers of approved design and furnished by the State to be placed on each end of the bridge

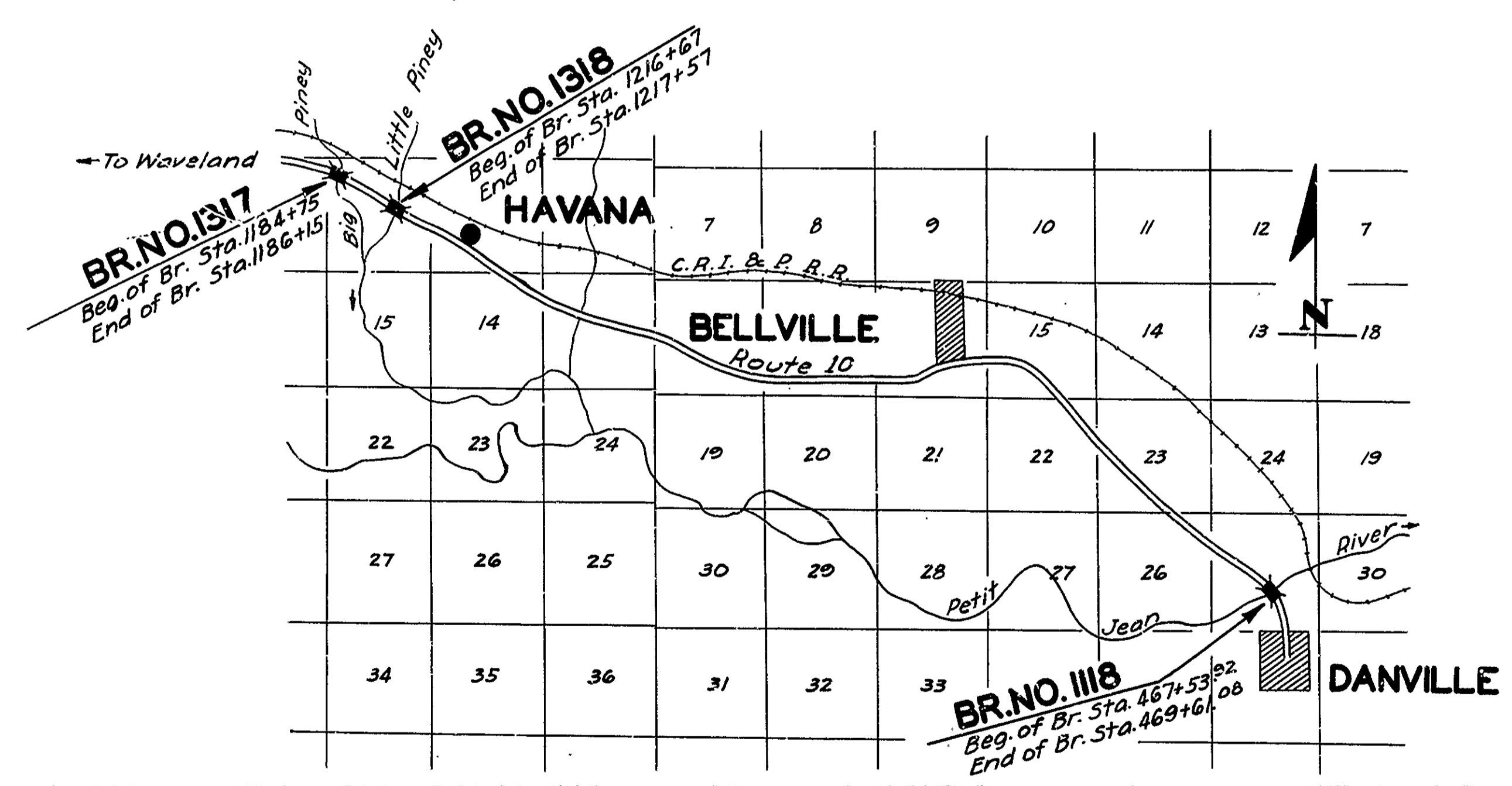
PLAN OF PROPOSED BRIDGES
ON
DANVILLE-WAVELAND ROAD
YELL COUNTY

ROUTE 10 SEC. 3
JOB NO 8138
FEDERAL AID PROJECT NO. 130-B

QUANTITIES

* Item No.	Description	Quantity	Unit
5.P&I.2	Common Excavation	18030.	Cu. Yds.
13	Dry Excavation for Structures	755.	Cu. Yds.
13	Wet " " "	846.	Cu. Yds.
13	Rock " " "	175.	Cu. Yds.
54	Class "A" Concrete	619.	Cu. Yds.
54	Class "S" Concrete	397.10	Cu. Yds.
55	Reinforcing Steel	178240.	Lbs.
56	Structural Steel (Trusses)	87070.	Lbs.
5.P&I.69	Rip Rap (1'-0" Thick)	277.	Cu. Yds.
74	Concrete Railing	697.	Lin. Ft.

* Item No. 5.P&I.2 (Common Excavation) & Item No. 5.P&I.69 (Rip Rap) to be non-participating in Federal Aid



Specifications approved by Chief, Bureau of Public Roads, September 26, 1925, and adopted by State Highway Commission May 30, 1926 with revisions and Special Provisions as follows:

REVISIONS

Pamphlet	Revised	Date	Approved
A	Revised	Sept. 1st, 1926	Approved June 1st, 1929
B	Revised	Nov. 1st, 1929	
C			
D	Revised	July 1st, 1928	Approved Nov. 24th, 1928
E	Revised	Jan. 1st, 1930	
F	Revised	Aug. 1st, 1929	
G	Revised	June 1st, 1929	
H	Revised	Jan. 1st, 1930	
I			
J	Revised	Jan. 1st, 1929	Approved June 1st, 1929
K			
L	Revised	Jan. 1st, 1929	Approved June 1st, 1929

SPECIAL PROVISIONS

Item	No. of Sheets
Rip Rap	1
Common Excavation	3
Pamphlet I	51

LAYOUT
Scale: 1"=1 Mile

GROSS + NET	LENGTH OF PROJECT	= 437.17 Ft. = .082 Mi.
	LENGTH OF BRIDGES	= 437.17 Ft.
	LENGTH OF EMBANKMENT	= 2505.83 Ft.
	LENGTH OF JOB	= 2943.0 Ft.

APPROVED [Signature]
CHIEF ENGINEER, U. S. BUREAU OF PUBLIC ROADS
APPROVED [Signature]
DISTRICT ENGINEER, U. S. BUREAU OF PUBLIC ROADS
APPROVED [Signature]
CHIEF, U. S. BUREAU OF PUBLIC ROADS
APPROVED [Signature]
CHAIRMAN, STATE HIGHWAY COMMISSION
APPROVED [Signature]
STATE HIGHWAY ENGINEER

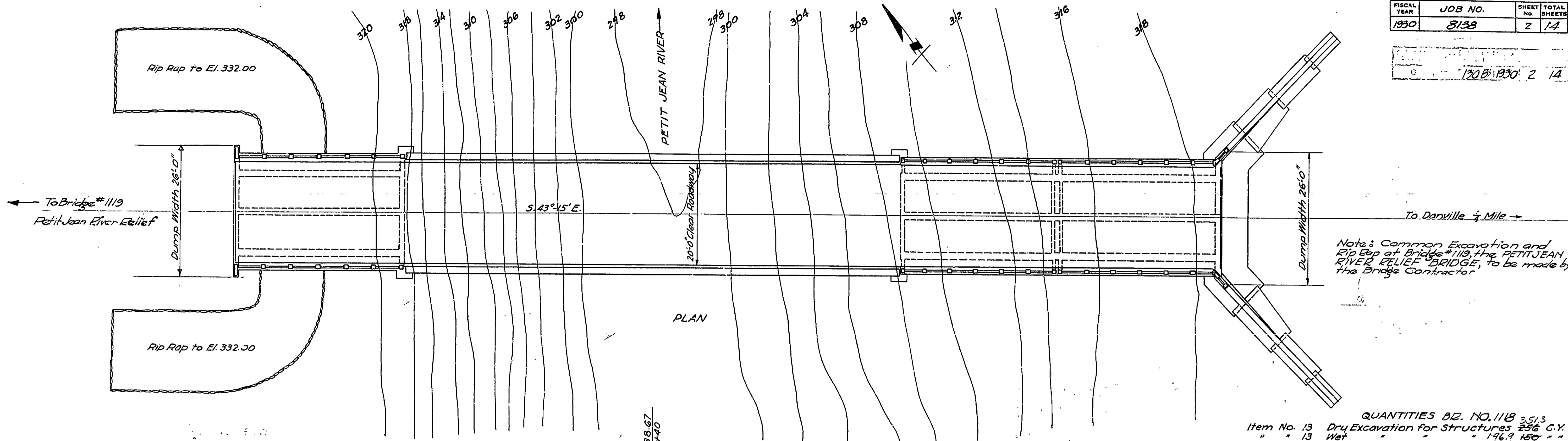
N.R. Sawyer
BRIDGE ENGINEER

BRIDGES NO. 1118, 1317 & 1318

DRAWING NO. 2797

FISCAL YEAR	JOB NO.	SHEET NO.	TOTAL SHEETS
1930	8138	2	14

0	1208-1930	2	14
---	-----------	---	----



QUANTITIES B.O. NO. 118 3513

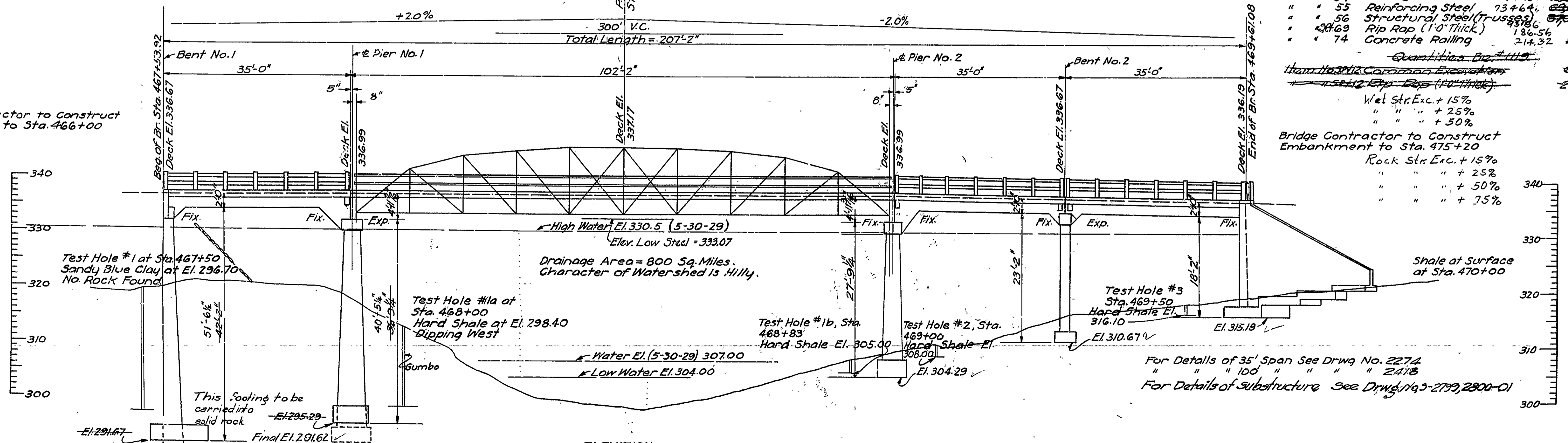
Item No. 13	Dry Excavation for Structures	256 C.Y.
" 13	Wet " "	196.9 150 " "
" 13	Rock " "	98.6 87 " "
" 34 1/2	Common Excavation	14,993.9 3,500 " "
" 54	Class "A" Concrete	304.73 24,000 " "
" 54	" " " " "	191.51 15,000 " "
" 55	Reinforcing Steel	73,464 16,000-Lbs.
" 56	Structural Steel (Trusses)	2,300 2,300-Lbs.
" 34 1/2	Rip Rap (1'-0" Thick)	186.56 77 C.Y.
" 74	Concrete Railing	214.32 228 Lin. Ft.

Quantities B.O. #118
~~Item No. 13 Common Excavation~~ 600 C.Y.
~~15' x 12' Rip Rap (1'-0" Thick)~~ 200 " "

Wet Str. Exc. + 15%	44.7
" " " + 25%	28.3
" " " + 50%	19.8

Bridge Contractor to Construct Embankment to Sta. 475+20

Rock Str. Exc. + 15%	6.59
" " " + 25%	3.32
" " " + 50%	3.33
" " " + 75%	1.37



Bridge Contractor to Construct Embankment to Sta. 466+00

General Notes:
 All exposed corners to have 3/4 chamfer unless otherwise noted.
 Precast Concrete Handrails to be 1:1:2 Mix, Max. sp. 3/4".
 Reinforcing Steel to be deformed bars of structural or intermediate grade.
 Shop List and Banding Diagrams of Reinforcing Steel must be submitted by the contractor before fabrication is begun.
 Roadway Drains and Expansion Devices to be paid for at unit price bid for Reinforcing Steel.
 All concrete to be poured in the dry.
 All concrete above top of column caps except handrails to be Class "5".
 All concrete below top of column caps to be Class "A".
 Specifications: Arkansas Standard Road and Bridge Specifications adopted May 30, 1925 and revised.

NOTE: 100' steel Span to have 2" finished camber

Revised
 No. = 7-21-30
 Final Elevations 12-30-31 J.A.K.

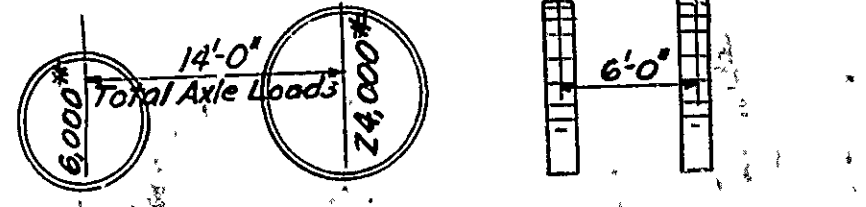
J.A.K.
 BRIDGE ENGINEER

LAYOUT OF BRIDGE OVER
 PETIT JEAN RIVER
 YELL COUNTY
 ARKANSAS STATE HIGHWAY DEPARTMENT
 LITTLE ROCK, ARK.
 Drawn By: G.S.V. Date: 1-9-30
 Traced By: J.A.K. Date: 1-10-30
 Checked By: A.L.G. Date: 1-17-30
 BRIDGE NO. 1118 DRAWING NO. 2795

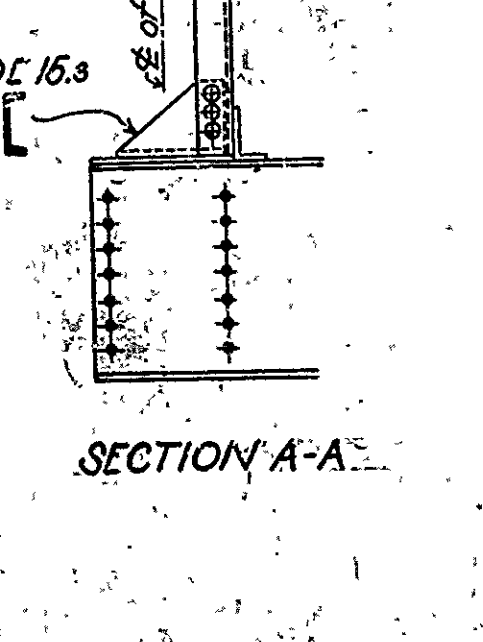
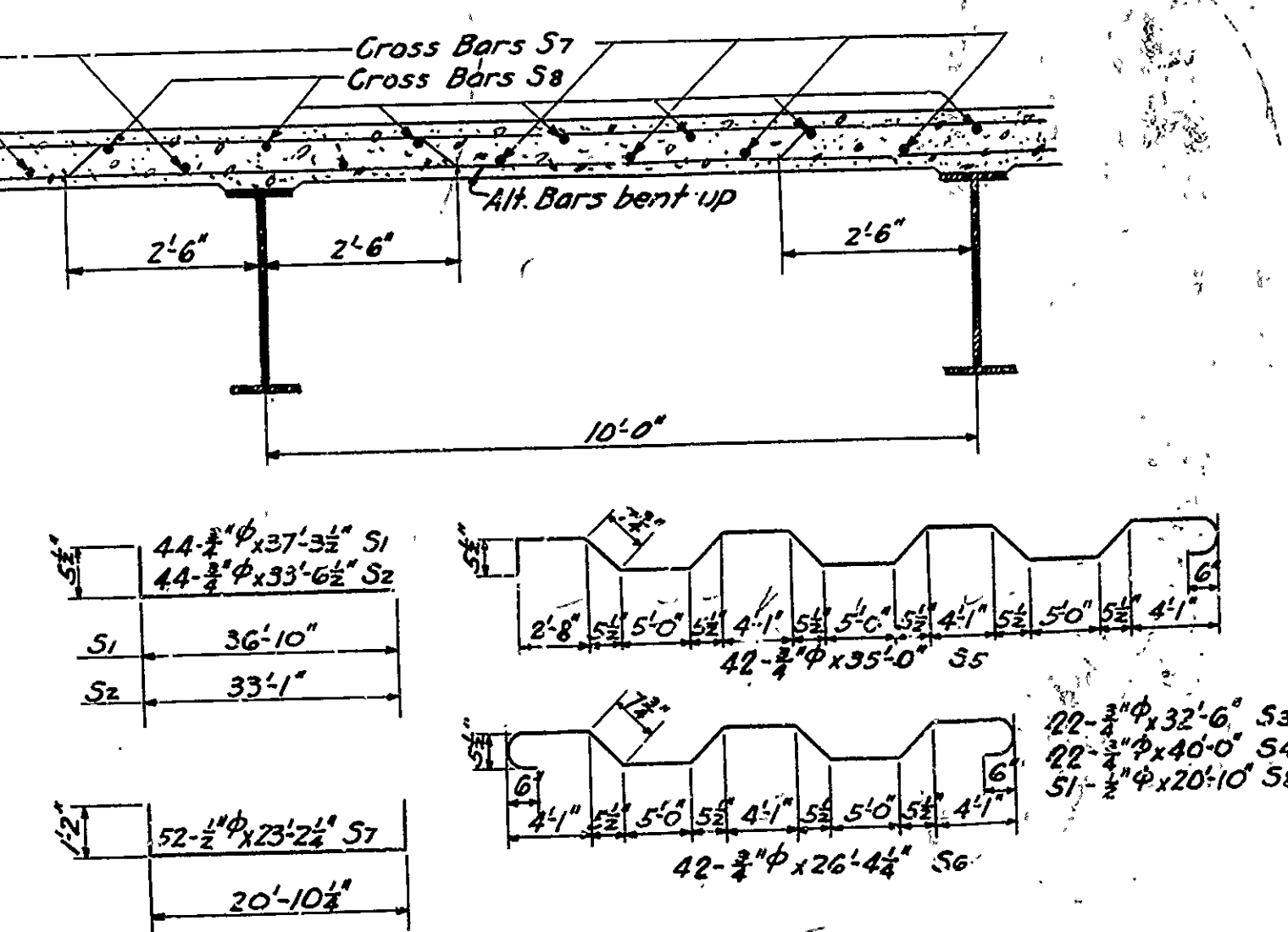
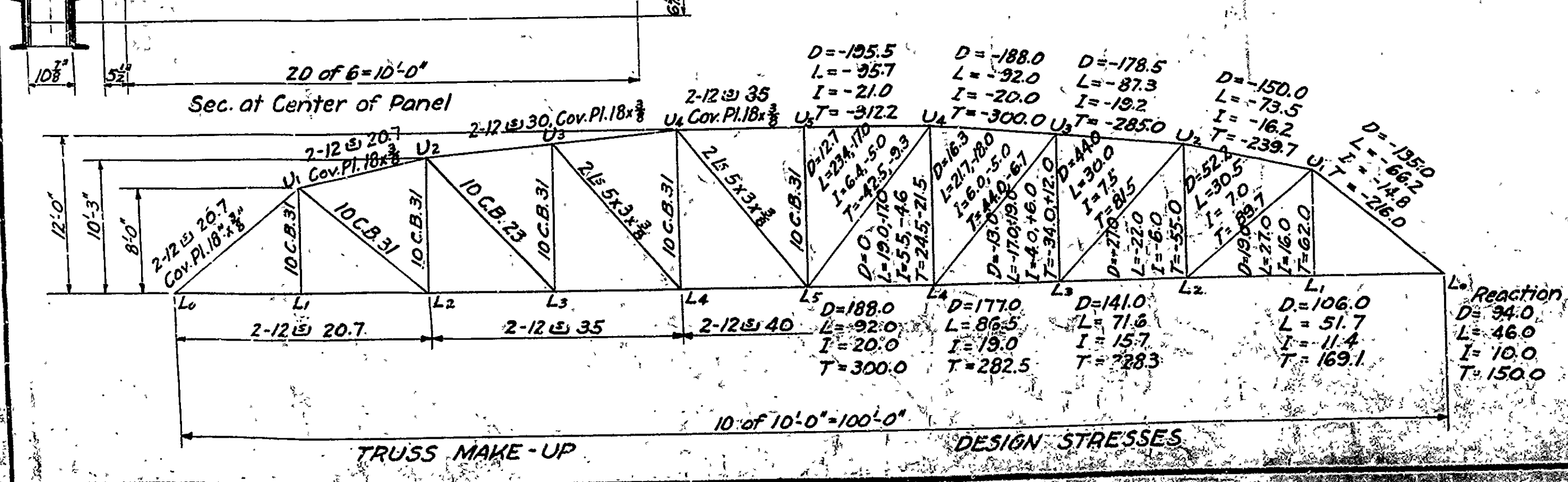
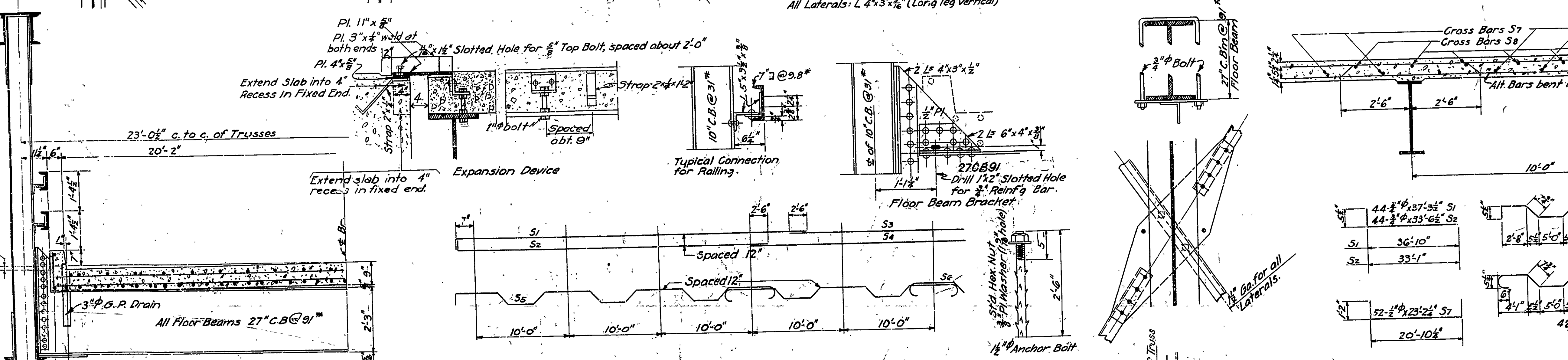
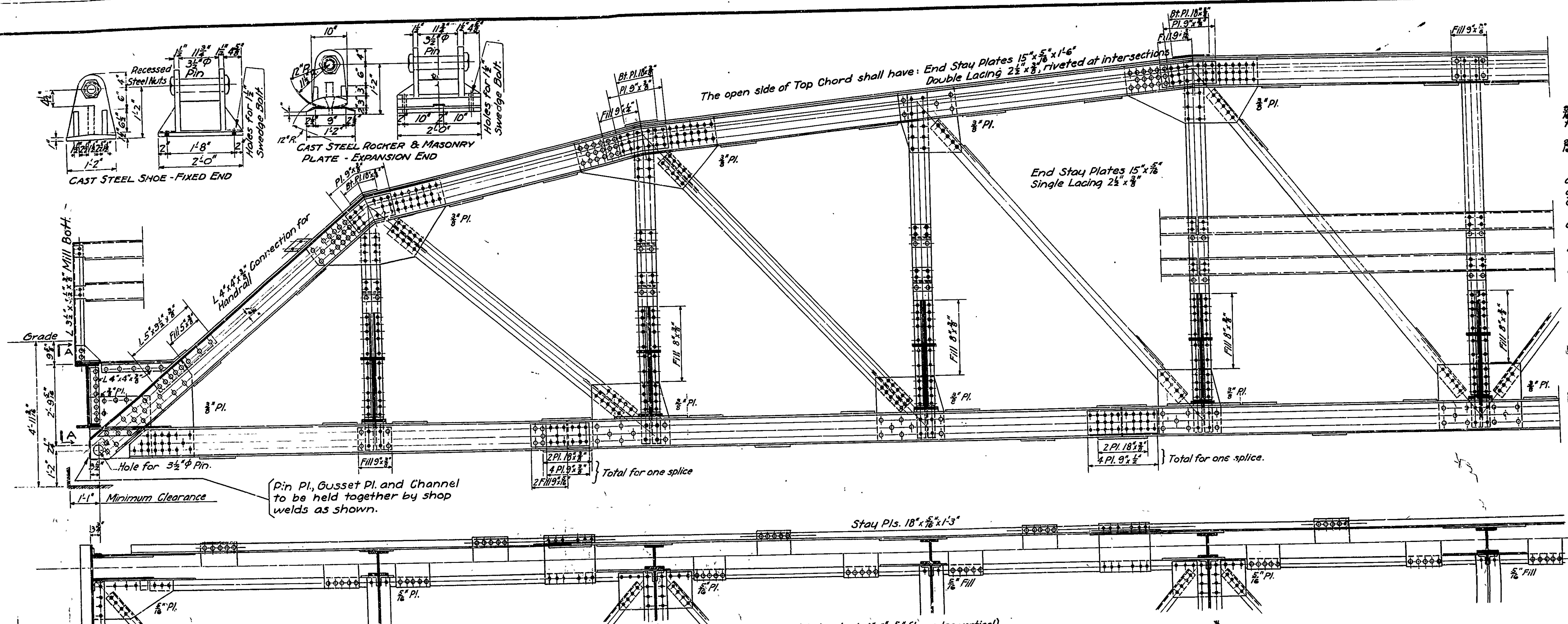
Notes 217-3 4 B

Rivets $\frac{3}{4}$ " Open holes $\frac{1}{8}$ "
 All holes in truss connections to be sub-punched and reamed to size while truss is assembled; this applies to field as well as shop rivets.
 Floor beam connections to be sub-punched and reamed to a metal template.
 All field connections shall be riveted.
 Shop paint: After being completely assembled and shop work finished, all pieces shall be given one coat of red lead and raw linseed oil before shipment.
 Field paint: Apply two coats of different colors as specified by the engineer.
 Floor slab: Concrete to be Class "S". One inch has been added for wear.
 All floor beams to be milled to exact length after framing angles have been riveted.
 Shapes of equal or greater strength may be substituted for shapes shown but payment will be made in accordance with sizes given on this plan.
 This drawing shows general features of design only.
 Shop drawings shall be made in compliance with specifications, submitted and approved before fabrication is begun.
 Specifications: Ark. Standard Road & Bridge Specifications, adopted May 30, 1925 & Revised.

Unit Stresses
 Concrete 750 lbs. per sq. in.
 Reinforcing steel 16,000 " "
 Structural steel 16,000 " "
 Live Load
 Hio Loading



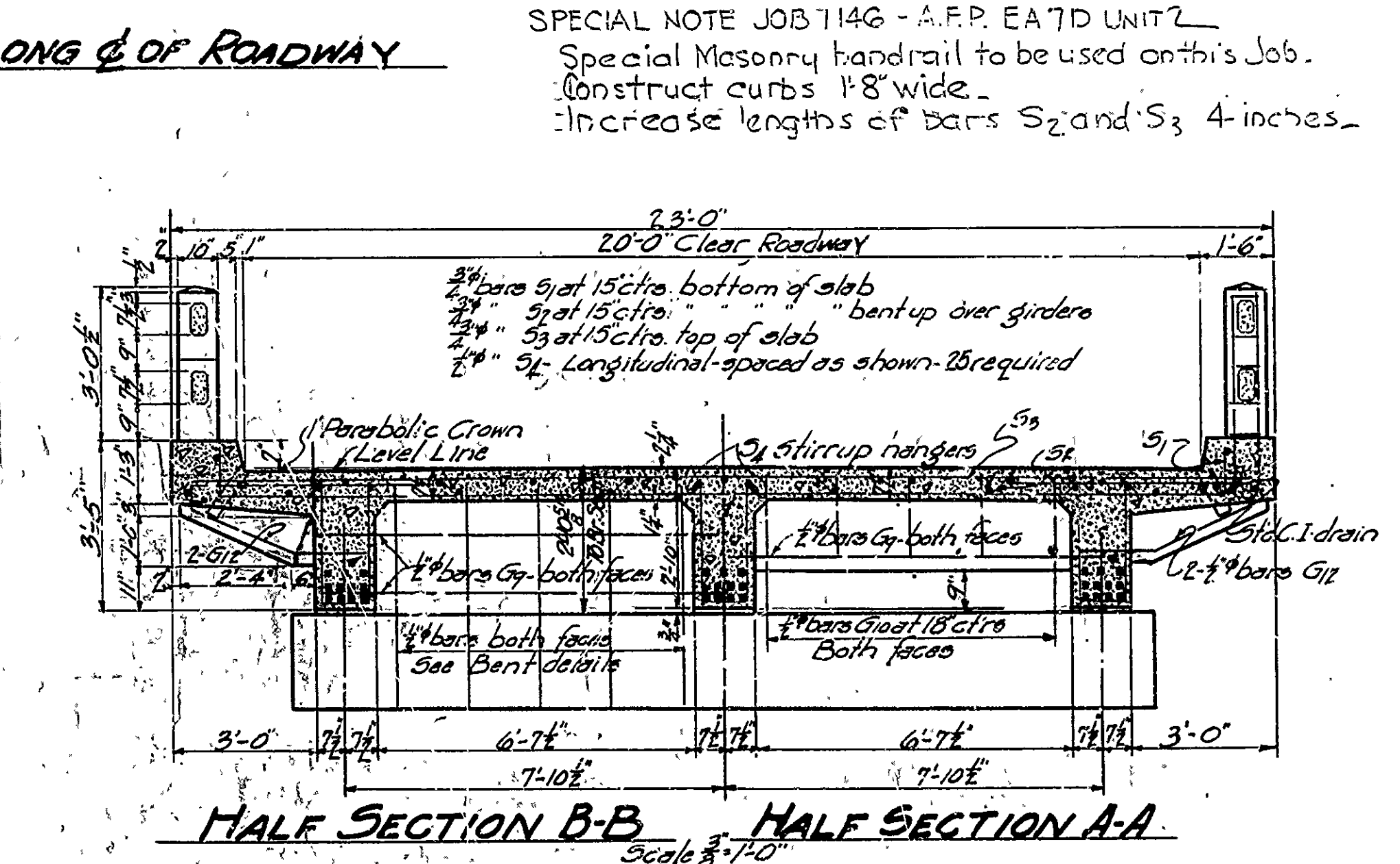
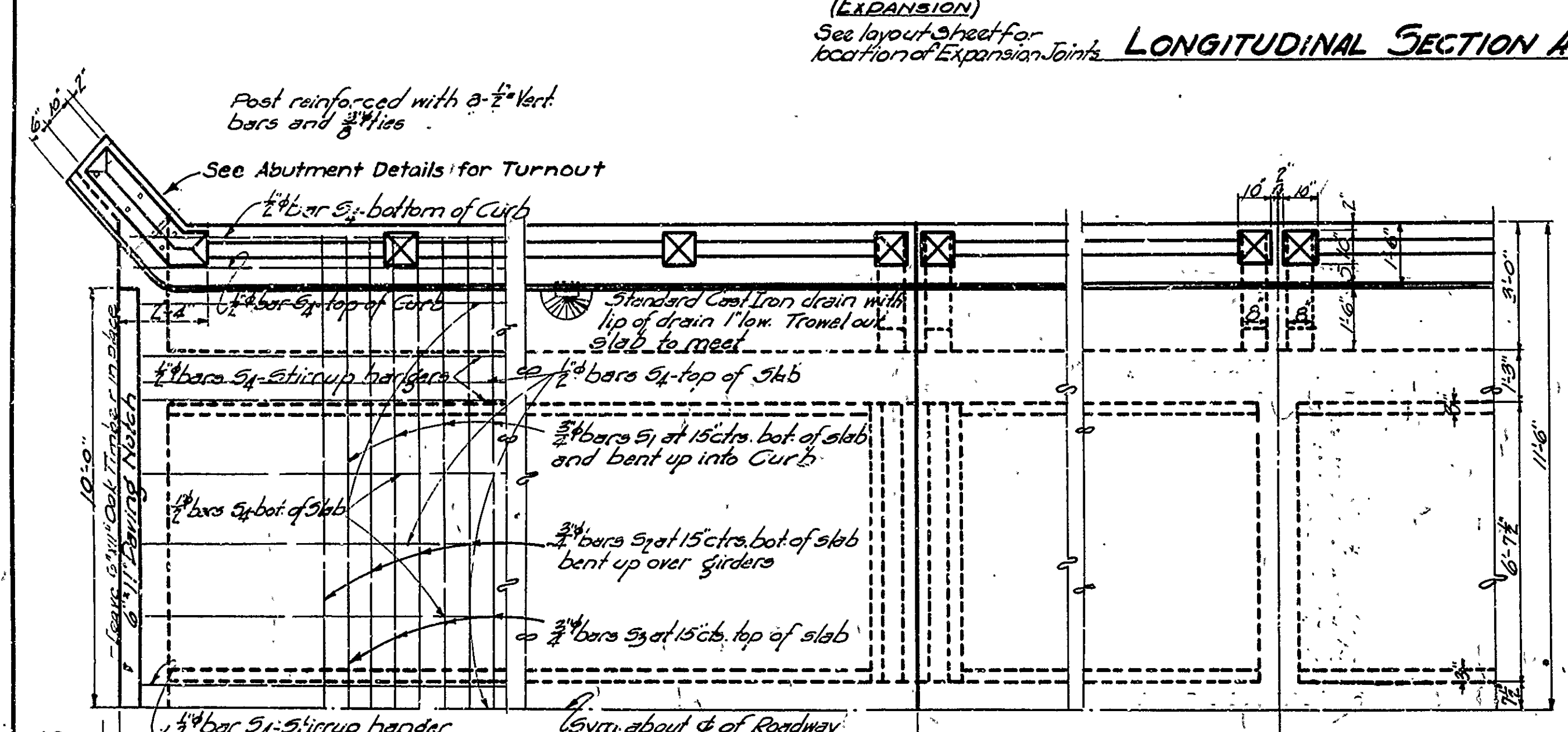
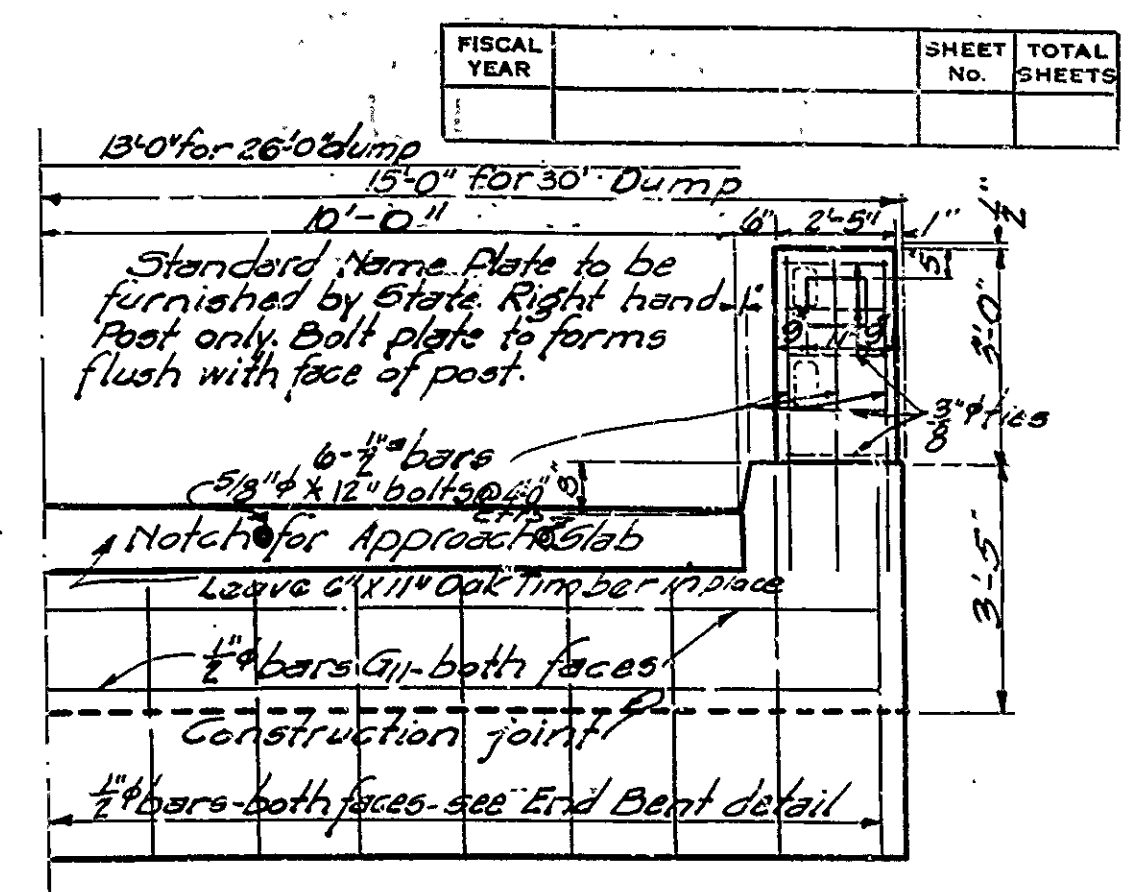
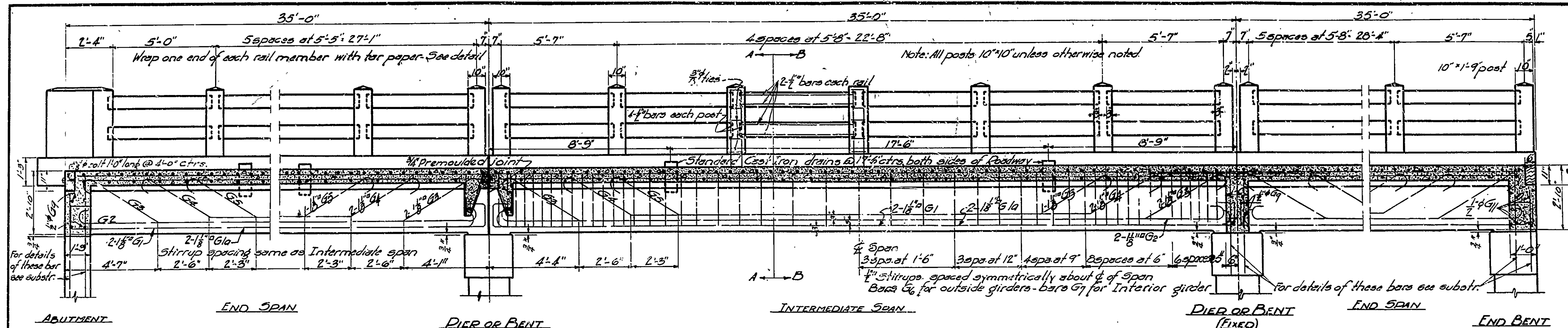
Estimated Quantities
 Structural Steel 85400 lbs
 Cast Steel 1670 "
 Reinforcing Steel 12480 "
 Concrete Class "S" 62.4 cu yds



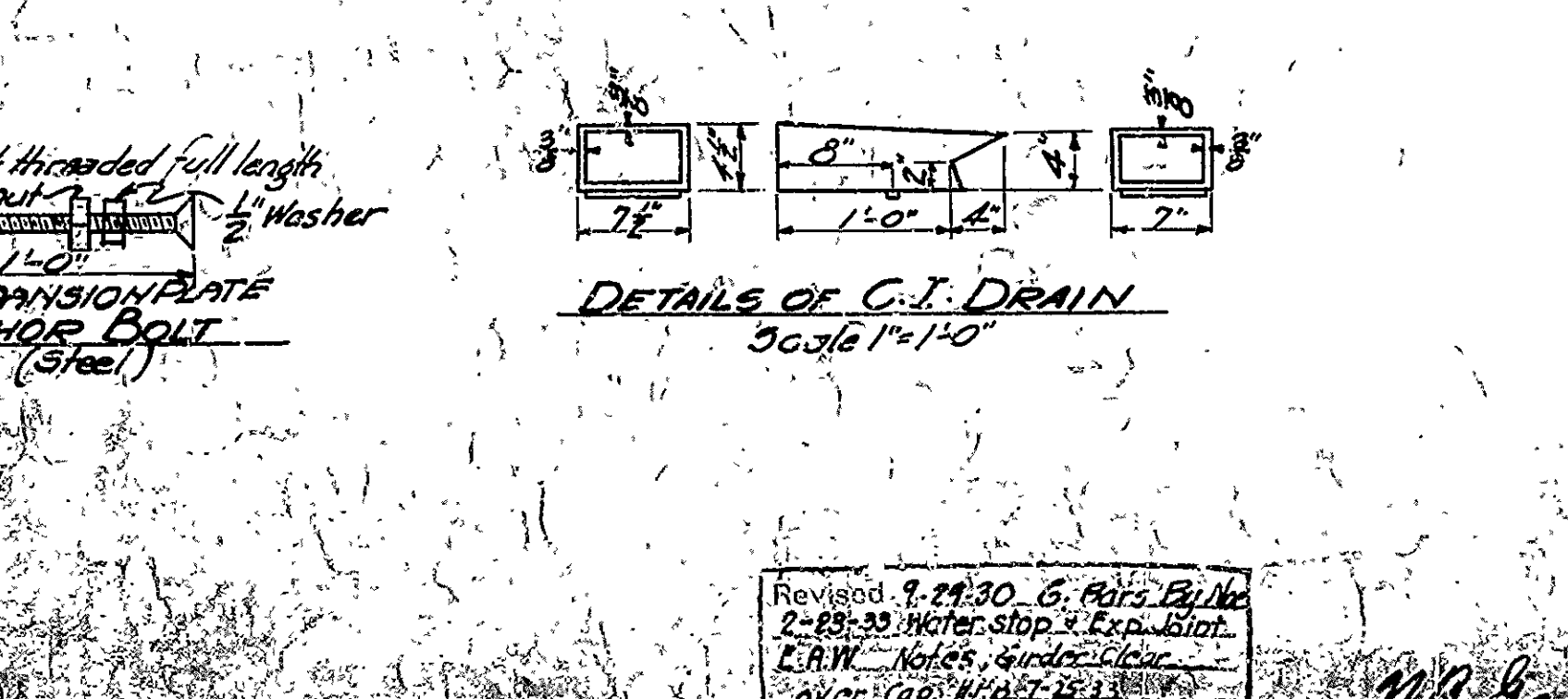
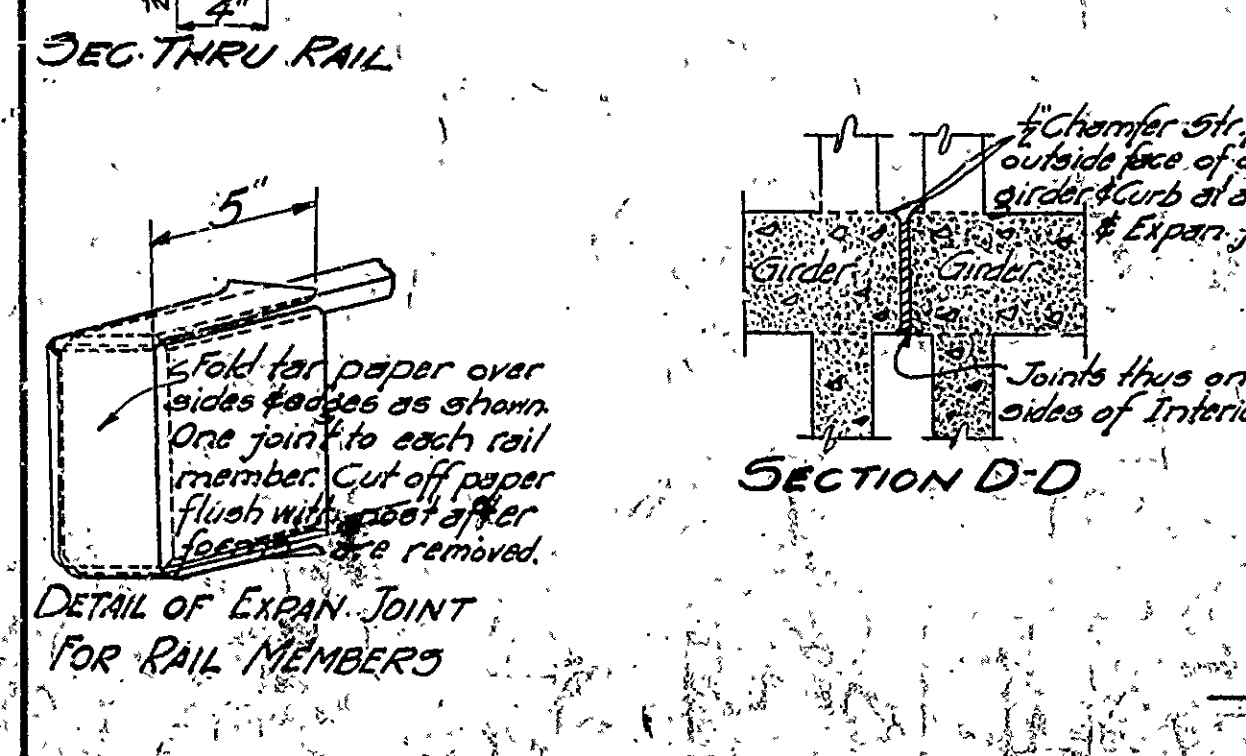
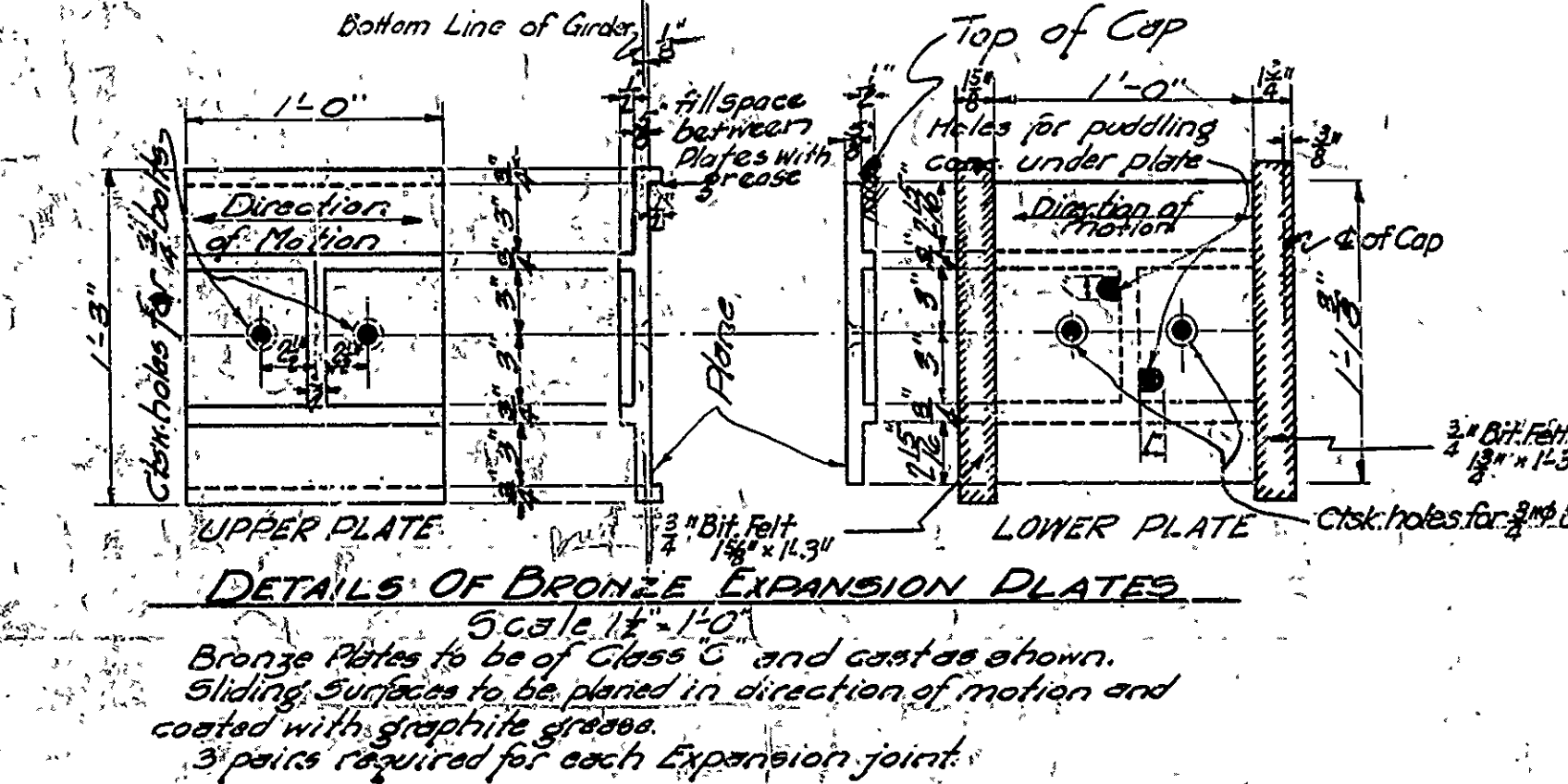
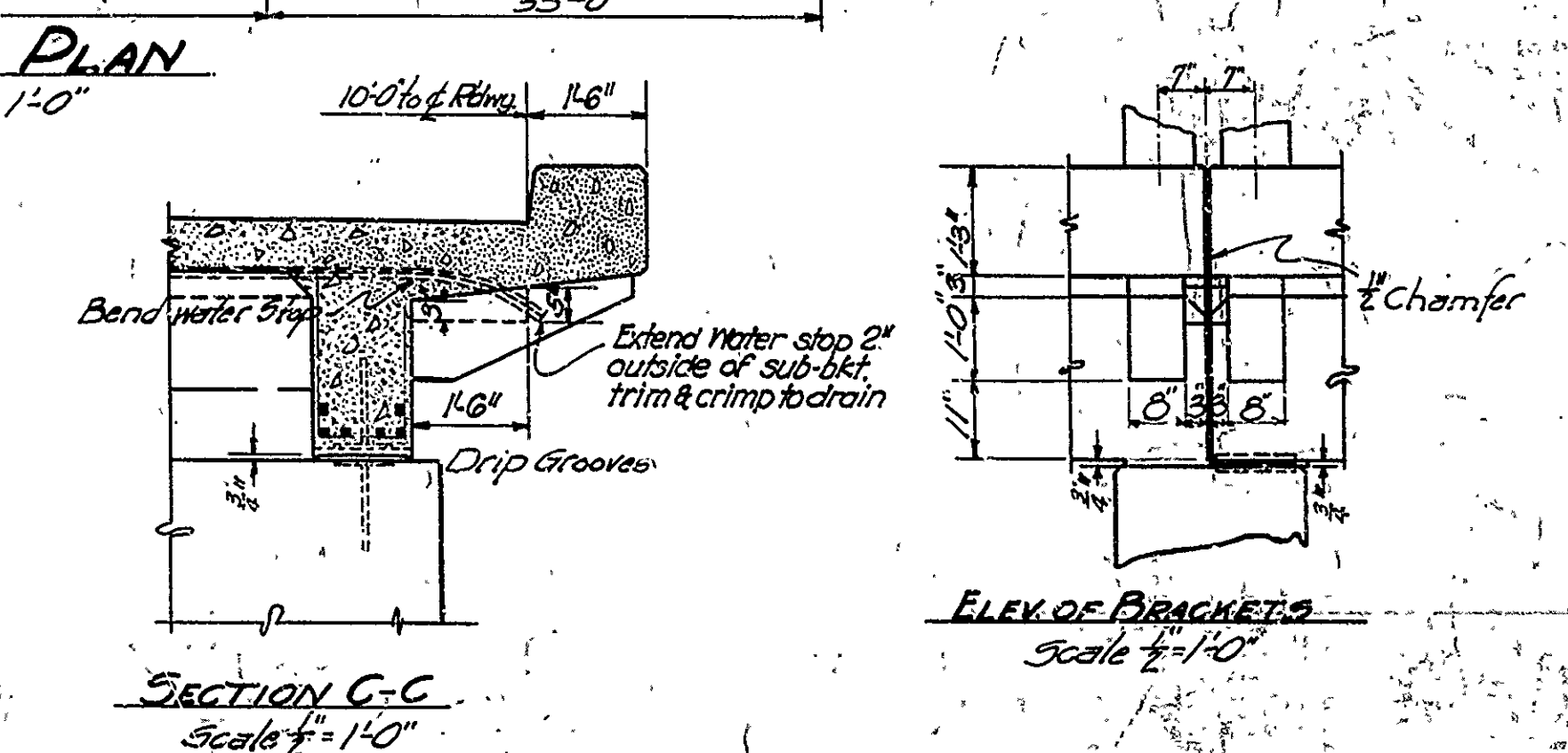
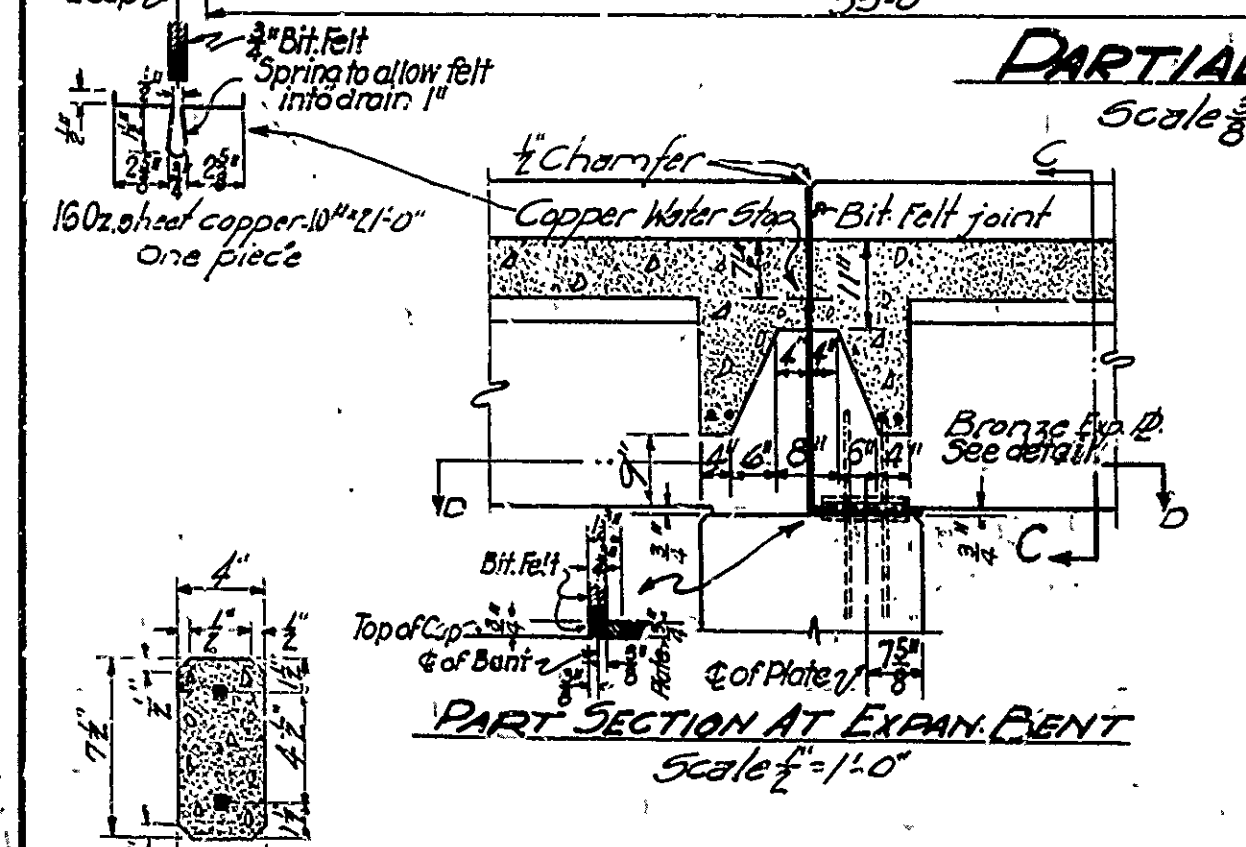
Revised Expansion Device
 2-11-30 Andraesen

Revised March 6, 1931
 Expansion Device and
 Revised Part
 by Andersen

STANDARD PLAN
 100'-0" LOW TRUSS SPAN
 20'-0" CLEAR RDWY
 ROUTE 50C
ARKANSAS STATE HIGHWAY COMMISSION
 LITTLE ROCK, ARK.
 Drawn By: A Date: 7-30-30
 Traced By: [Signature] Date: [Blank]
 Checked By: [Signature] Date: [Blank]
 BRIDGE No. [Blank] DRAWING No. 2418
 Scale: 1/2" = 1'-0"



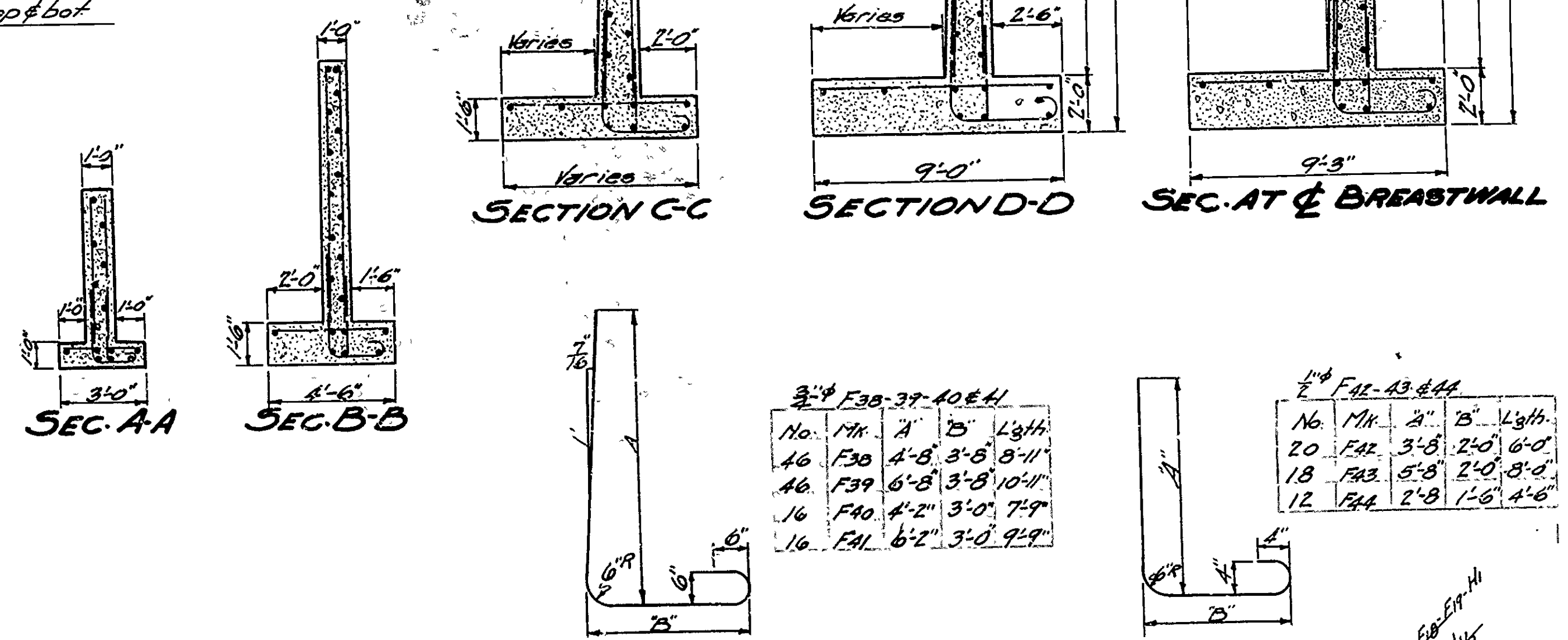
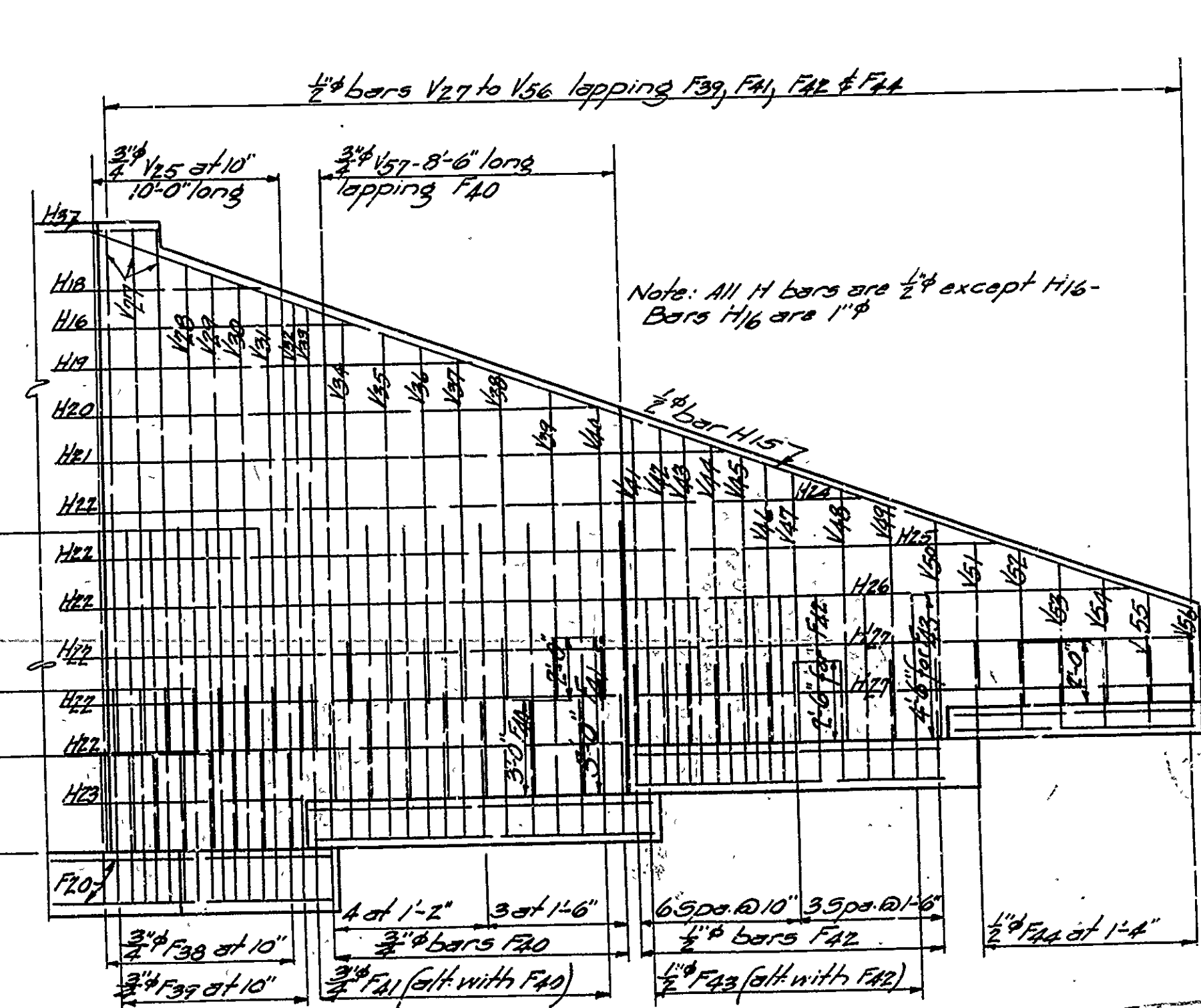
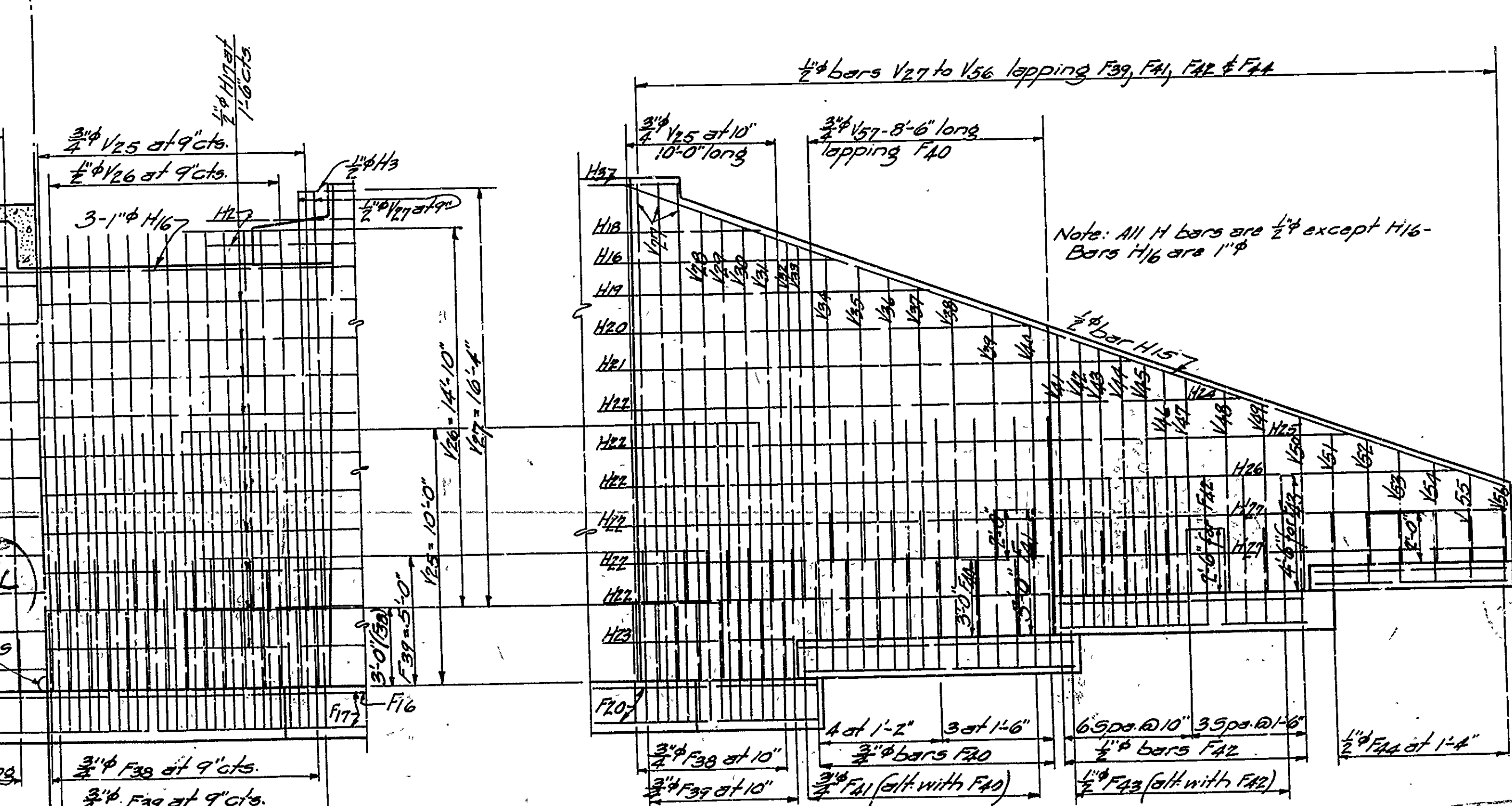
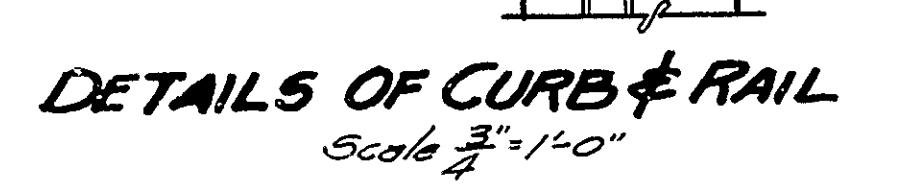
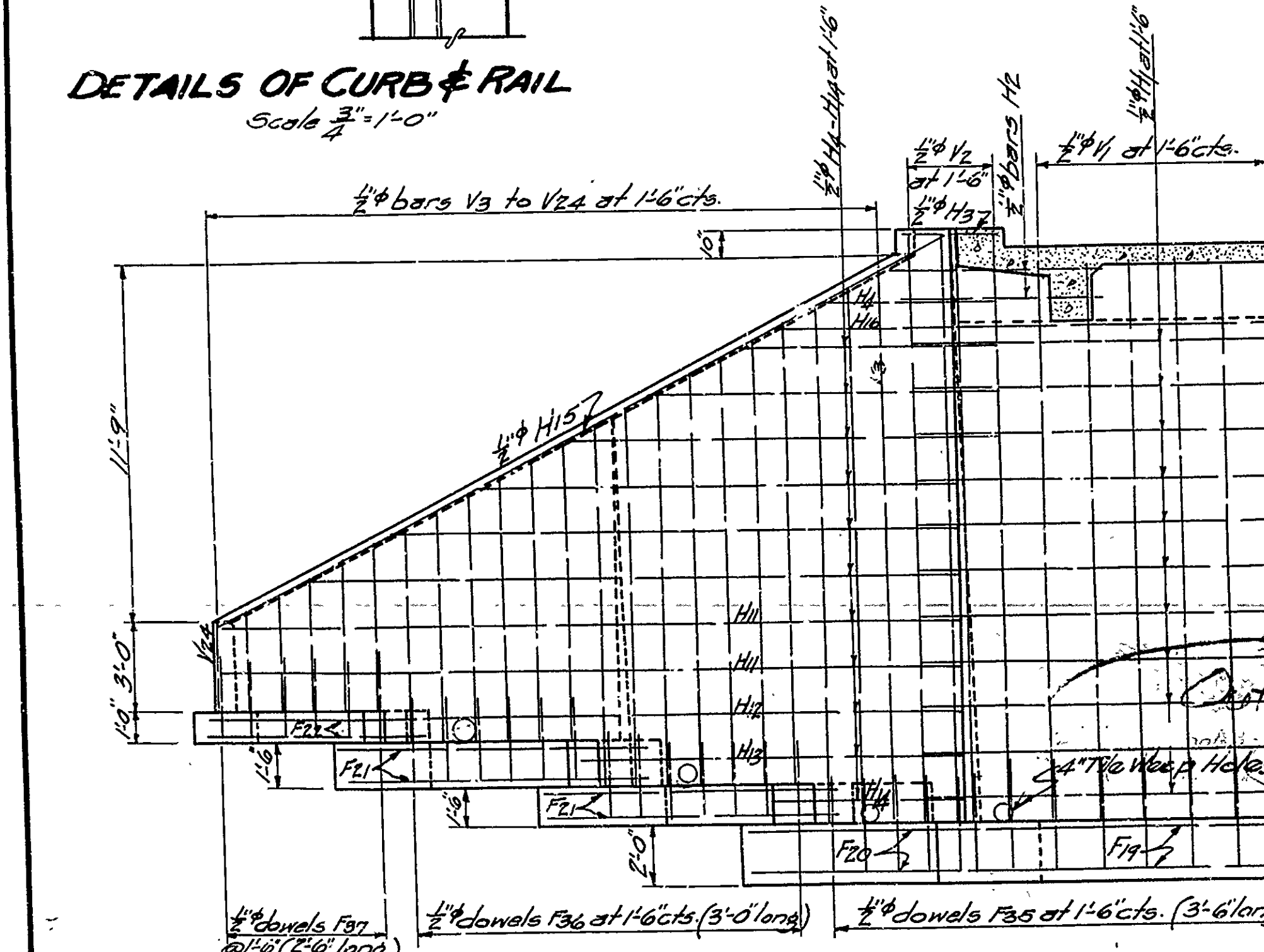
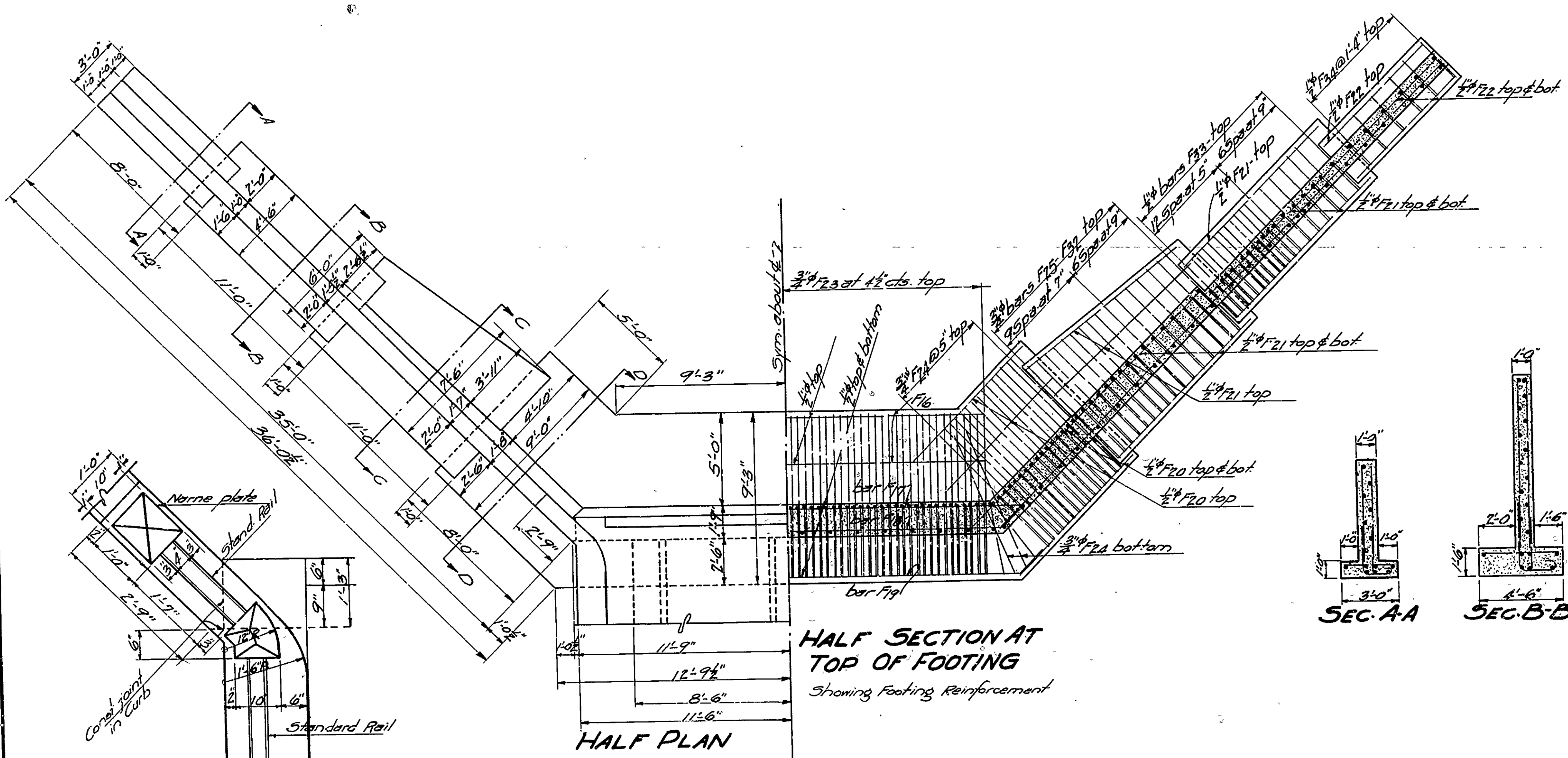
MARK	SIZE	LENGTH	BENDING DIAGRAM
S1	2"	25'-0"	2'-10"
S2	2"	24'-11"	5'-4" 1'-3 3/4" 3'-1" 1'-1" 5'-4" 2'-6"
S3	2"	23'-6"	2'-6"
G1	1 1/2"	38'-8"	1'-2" 1'-2" R
G10	1 1/2"	36'-2"	34'-8" = G10
G2	1 1/2"	35'-8"	33'-8" = G-2
G3	1 1/2"	36'-8"	2'-0" 3'-10" 4'-2" 2'-6"
G4	1 1/2"	30'-2"	1'-4" 3'-1" 3'-5" 2'-4"
G5	1 1/2"	25'-8"	1'-9" 3'-1" 3'-5" 16'-10"
G6	1 1/2"	36'-2"	2'-0" 3'-10" 4'-2" 25'-10"
G7	1 1/2"	29'-8"	1'-9" 3'-1" 3'-5" 20'-10"
G8	1 1/2"	25'-2"	1'-4" 3'-1" 3'-5" 16'-2"
G9	1 1/2"	36'-8"	2'-0" 3'-10" 4'-2" 26'-4"
G11	1 1/2"	6'-5"	5'-1" 2'-1" 2'-5" 2'-5"
G12	1 1/2"	9'-6"	2'-3" 1'-6"



General Notes
 All exposed corners to have 1/4" chamfer unless otherwise noted.
 Deceast Concrete Handrails to be 1:1:2 mix. Max agg. 3".
 All concrete above top of Bent Caps, except handrails to be Class S.
 Reinforcing steel to be deformed bars of structural or Intermediate Grade. Shop List & Bending Diagrams must be submitted by the Contractor before fabrication is begun.
 Volume of Oak headers is included in volume of Class S concrete.
 Specifications: Arkansas Road & Bridge Specifications adopted May 30, 1925 and revised.
 Unit stresses: 16,000 psi, 16,750 psi, 15,000 psi.
 All dimensions relating to reinforcing steel are to centers of bars.
 Cast iron drains are to be paid for at the unit price bid for Cast Iron and Cast Steel.
 Bronze Expansion Plates, Anchor bolts and Copper Water Stop are to be paid for at the unit price bid for Bronze Expansion Devices.
 Bolts for Oak header and Bituminous felt are to be paid for at the unit price bid for Reinforcing Steel.

STANDARD 35'-0" R.C. DECK GIRDER
 3" GIRDER TYPE
 20'-0" CLEAR ROADWAY
 ARKANSAS STATE HIGHWAY COMMISSION
 LITTLE ROCK, ARK.
 Drawn By: Date: 2-1-70
 Traced By: Date: 2-1-70
 Checked By: Date: 2-1-70
 BRIDGE NO. 1487 DRAWING NO. 2274

Revised 9-29-30. G. Pitts. By M. 2-28-39. Water stop & Expansion. C.B.W. Notes, and drawings. 2-28-39. W.H. 2-28-39.



No.	Mk.	A'	B'	Lgth.
46	F30	4'-8"	3'-8"	8'-11"
46	F39	6'-8"	3'-8"	10'-4"
16	F40	4'-2"	3'-0"	7'-9"
16	F41	6'-2"	3'-0"	9'-9"

No.	Mk.	A'	B'	Lgth.
20	F42	3'-8"	2'-0"	6'-0"
18	F43	5'-8"	2'-0"	8'-0"
12	F44	2'-8"	1'-6"	4'-6"

Note
Footings to be founded on rock stepped to avoid excessive rock excavation.
Centers of nearest bars to be 2 1/2" from surface of concrete except at bottom of footings where this dimension shall be 4".
For details of superstructure see drawing No. 2274
For General Note see drawing No. 2798

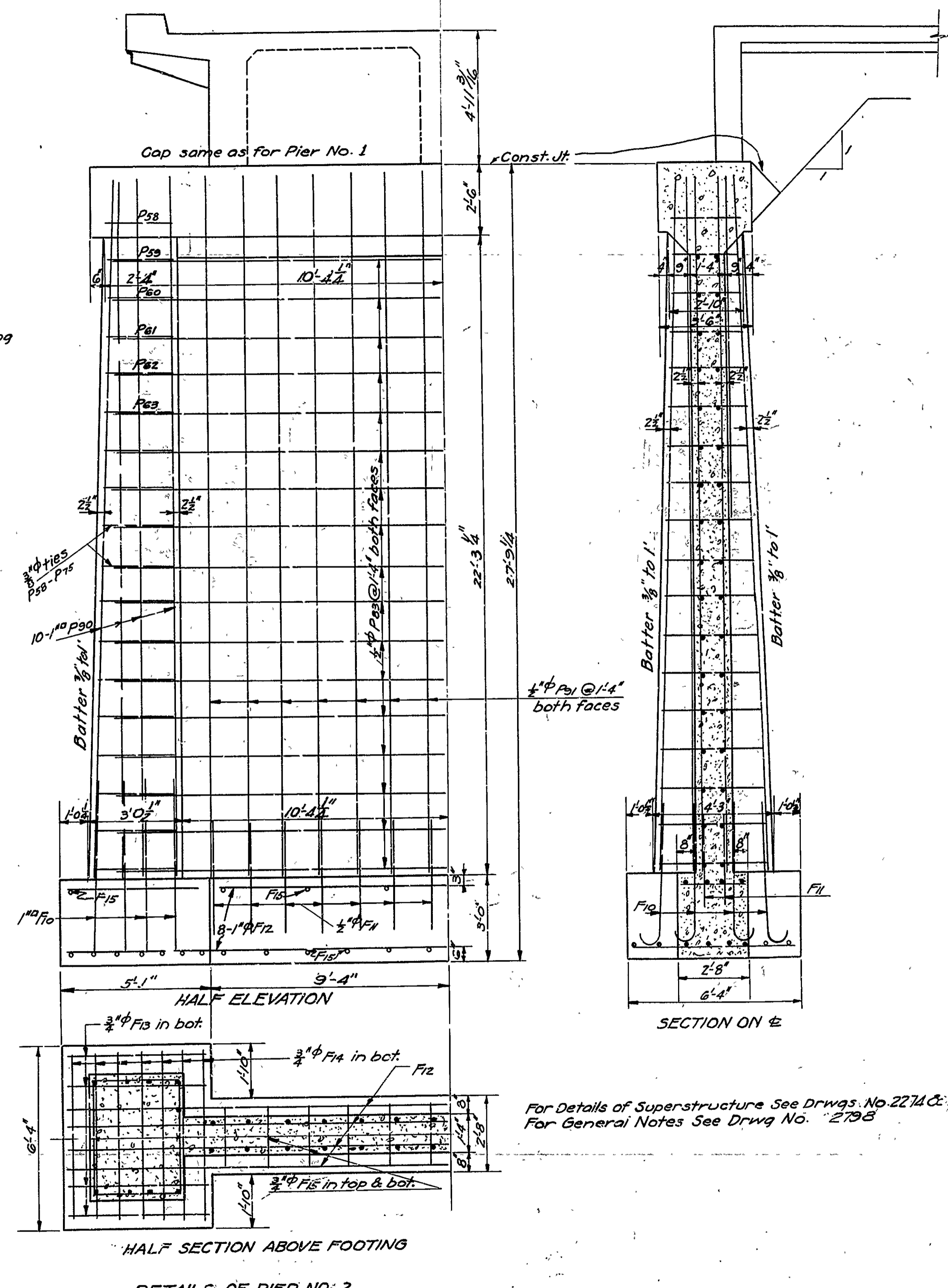
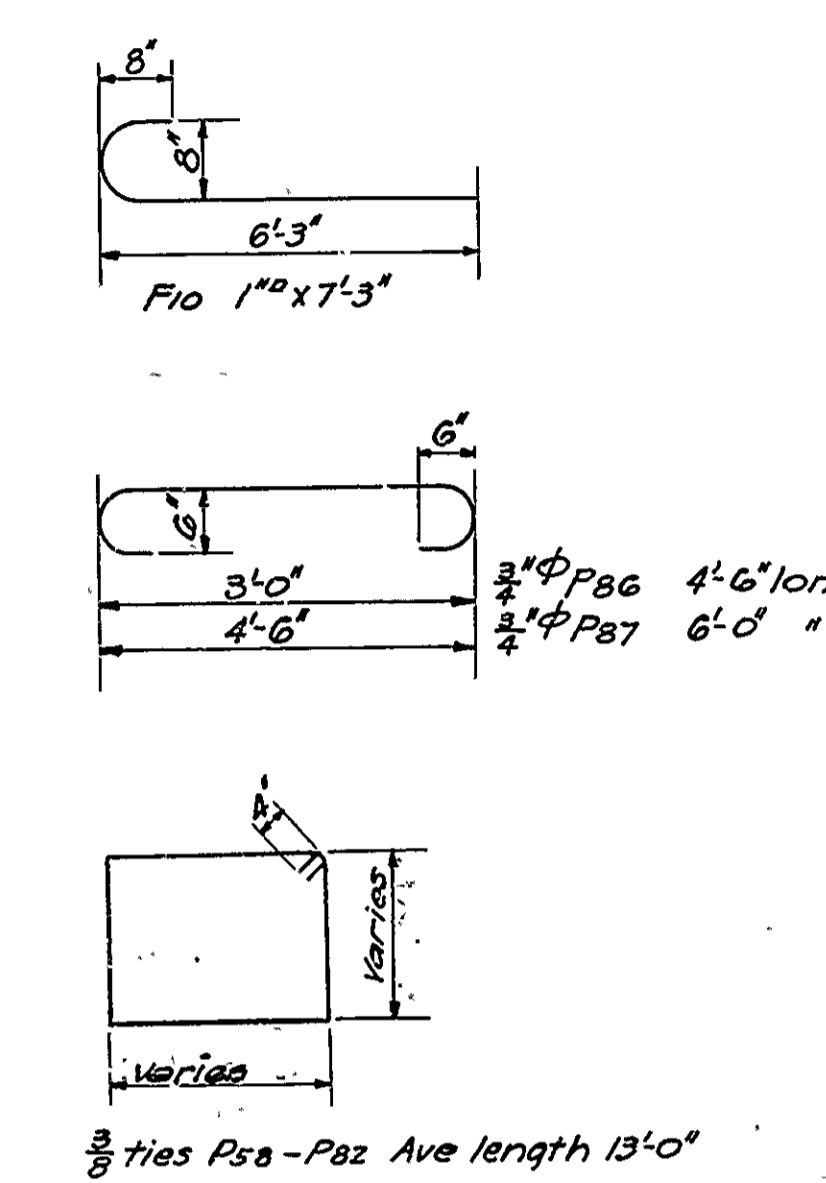
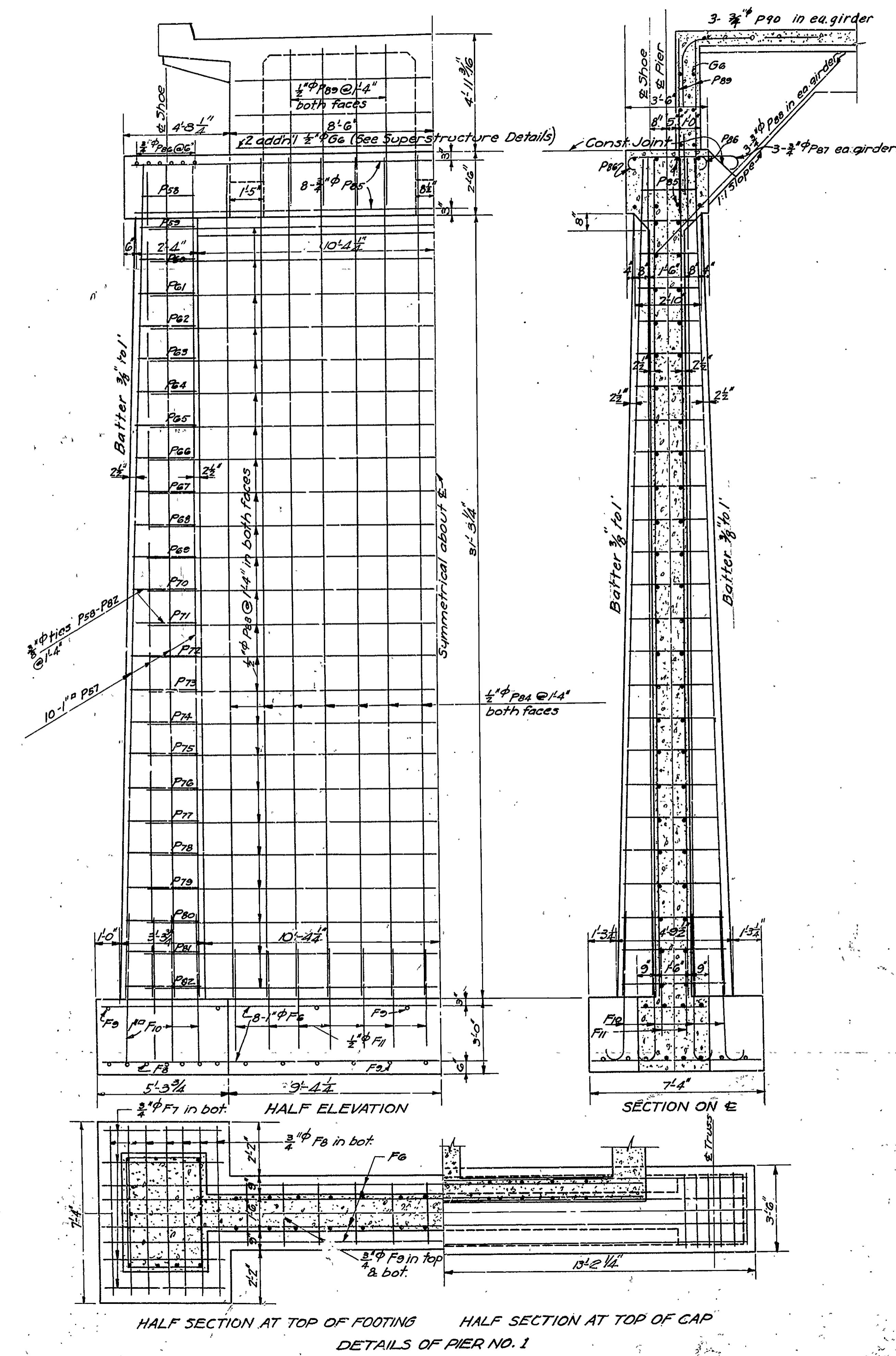
**DETAILS OF ABUTMENT
BRIDGE OVER PETIT JEAN RIVER
YELL COUNTY
ROUTE 10 SEC. 3**

**ARKANSAS STATE HIGHWAY DEPARTMENT
LITTLE ROCK, ARK.**

Drawn By: C.S.V. Date: 4-9-30
Traced By: [Signature] Date: 1-11-31
Checked By: [Signature] Date: [Blank]
BRIDGE NO. 1118 Scale: 1/4" = 1 ft. except as noted.
DRAWING NO. 2891

N.B. Kanner
BRIDGE ENGINEER

FED. ROAD DIST. I.	STATE	FED. AID PROJ. NO.	CONTRACT NO.	SHEET NO.	TOTAL SHEETS
3	ARK.	130B-1930	4 14	4	14
FISCAL YEAR	JOB No.				
1930	8138				



For Details of Superstructure See Drwgs. No 2274 & 2418.
For General Notes See Drwg No. 2735

DETAILS OF PIER NO. 1 & 2
BRIDGE OVER PETIT JEAN RIVER
YELL COUNTY
ROUTE 10 SEC. 3
ARKANSAS STATE HIGHWAY DEPARTMENT
LITTLE ROCK, ARK.
Drawn By: G.S.V. Date: 1-7-30
Traced By: J.W. Date: 1-9-30
Checked By: J.W. Date: 1-10-30
Scale: 3/8" = 1 ft.
BRIDGE NO. 1118 DRAWING NO. 2800

Revised Steel, G.S.V. 2-6-30
Discontinued, Nov. 1930

M.B. Bannan
BRIDGE ENGINEER

