

STATE OF ARKANSAS
STATE HIGHWAY DEPARTMENT

PLAN OF PROPOSED BRIDGES
ON
OZARK-MULBERRY ROAD
FRANKLIN COUNTY

ROUTE 64 SEC. 3
JOB NO 494

EMERGENCY FINANCIAL F.A.P. NO. 30-REO. SEC. F

| | | | | | | | |
|-----------------|------|---------|-----|-----------|---|--------------|----|
| PROJ. DIST. NO. | 1929 | JOB NO. | 494 | SHEET NO. | 1 | TOTAL SHEETS | 10 |
|-----------------|------|---------|-----|-----------|---|--------------|----|

| | | | | | | | | | | | |
|---------------------|---|-------|------|--------------------|---------|-------------|------|-----------|---|--------------|----|
| FED. ROAD DIST. NO. | 6 | STATE | ARK. | FED. AID PROJ. NO. | 30 Reo. | FISCAL YEAR | 1929 | SHEET NO. | 1 | TOTAL SHEETS | 10 |
|---------------------|---|-------|------|--------------------|---------|-------------|------|-----------|---|--------------|----|

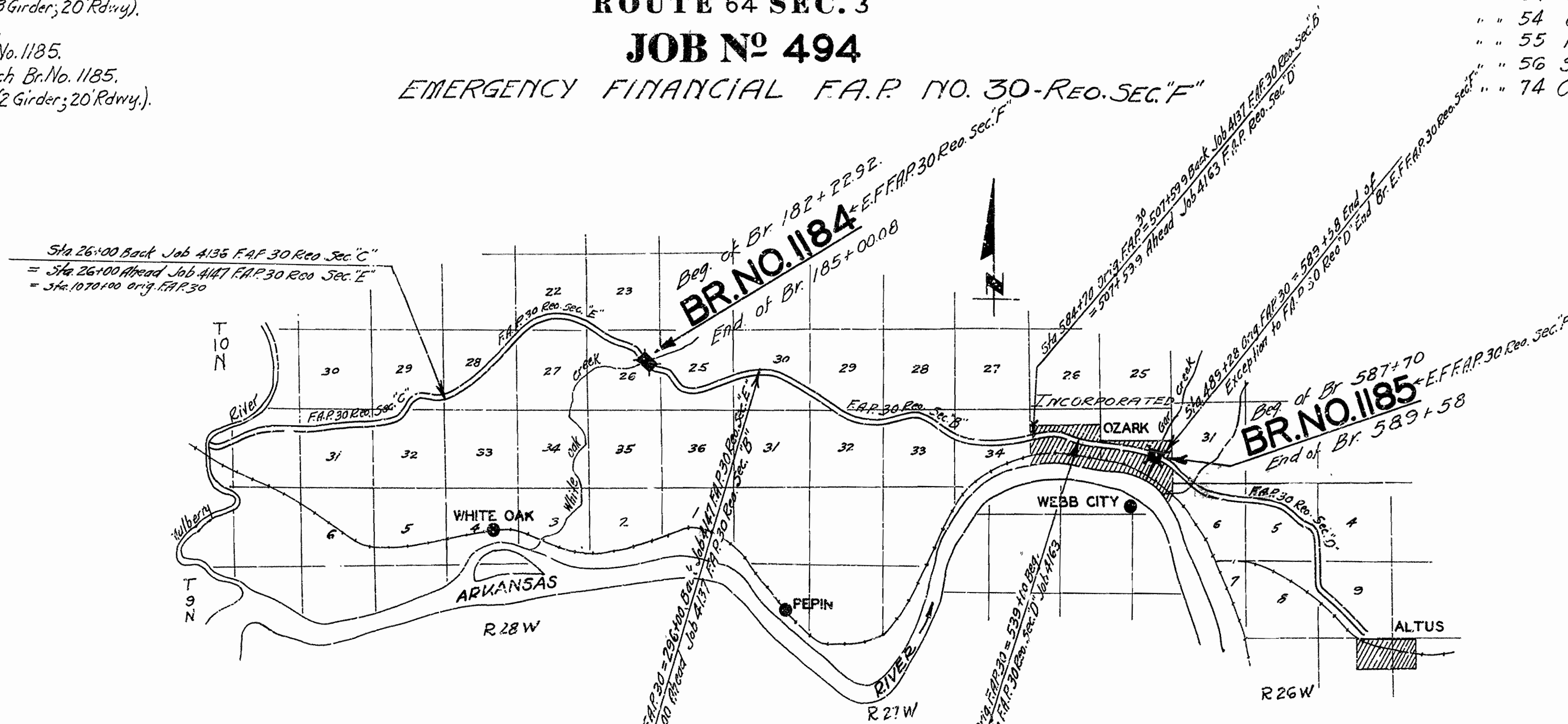
Emergency Financial F.A.P. No. 30 Reo. Sec. F

INDEX OF SHEETS

| Sheet No. | Drwg. No. | Title Sheet |
|-----------|-----------|--|
| 2 | 1612 | Layout Br. No. 1184. |
| 3 | 1613 | Det. of Bents & Handrail Br. No. 1184. |
| 4 | 1614 | " " Piers " " " |
| 5 | 1095 | Det. of Std. 100' Steel Truss. |
| 6 | 1003 | " " " 35' R.C.D.G. (3 Girders; 20' Rdwy.) |
| 7 | 1615 | Layout Br. No. 1185. |
| 8 | 1616 | Det. of End Bents Br. No. 1185. |
| 9 | 1617 | " " 100' Concrete Arch Br. No. 1185. |
| 10 | 1041 | " " Std. 40' R.C.D.G. (2 Girders; 20' Rdwy.) |

QUANTITIES

| Item No. | Item | Cu Yds |
|----------|-------------------------------|--------------|
| 13 | Dry Excavation for Structures | 884- " |
| 13 | Wet " " " | 435- " |
| 13 | Solid Rock Excav " " | 79- " |
| 54 | Class-A- Concrete | 465.16 " |
| 54 | Class-S- Concrete | 532.00 " |
| 55 | Reinforcing Steel | 148339 Lbs. |
| 56 | Structural Steel (Trusses) | 78490 Lbs. |
| 74 | Concrete Railing | 756 Lin. Ft. |



| SEC. | STA. TO STA. | LENGTH ROADWAY FEET | LENGTH BRIDGES FEET | TOTAL FEET | TOTAL MILES |
|----------|---------------------|---------------------|---------------------|------------|-------------|
| REO. A | 3+00 - 189+70 | 18855 | 3.571 | 18855 | 3.571 |
| REO. D | 5+74+50.9 - 819+100 | 25236.9 | 4.893 | 25236.9 | 4.893 |
| NOT REO. | 539+10 - 589+58 | 4739 | 0.897 | 4739 | 0.897 |
| REO. E | 296+00 - 507+53.9 | 21632.2 | 4.009 | 21632.2 | 4.009 |
| REO. E | 26+00 - 295+00 | 26711 | 5.058 | 26711 | 5.058 |
| REO. C | 983+94 - 26+00 | 13357.4 | 2.528 | 13357.4 | 2.528 |
| REO. F | 182+30 - 587+70 | 465.16 | 0.888 | 465.16 | 0.888 |
| TOTALS | | 110662.5 | 20.956 | 110662.5 | 20.956 |

| SEC. | STA. TO STA. | LENGTH ROADWAY FEET | LENGTH BRIDGES FEET | TOTAL FEET | TOTAL MILES |
|----------|---------------------|---------------------|---------------------|------------|-------------|
| REO. A | 0+00 - 248+80 | 24880 | 4.613 | 24880 | 4.613 |
| * D | 248+80 - 499+28 | 25048 | 4.371 | 25048 | 4.371 |
| NOT REO. | 499+28 - 522+27.5 | 3999.5 | 0.757 | 3999.5 | 0.757 |
| REO. D | 522+27.5 - 584+70 | 5542.5 | 1.049 | 5542.5 | 1.049 |
| * B | 584+70 - 781+69 | 20262 | 3.837 | 20262 | 3.837 |
| * E | 781+69 - 1070+00 | 27681 | 3.242 | 27681 | 3.242 |
| * C | 1070+00 - 1263+55.2 | 19312.2 | 3.638 | 19312.2 | 3.638 |
| TOTALS | | 124125.9 | 23.507 | 124125.9 | 23.507 |

LAYOUT
Scale: 1"=1 Mi.

GROSS LENGTH OF PROJECT 465-2' = 0.888 Miles
NET LENGTH OF PROJECT 465-2' = 0.888 Miles

Specifications approved by Chief Bureau of Public Roads September 23, 1925, and adopted by State Highway Commission May 30, 1925, with revisions and special provisions as follows:

| Revised | By | Date |
|---------------|----|--------------|
| Sept. 1, 1925 | | June 1, 1929 |
| July 1, 1928 | | |
| May 30, 1925 | | May 30, 1925 |
| Jan. 1, 1929 | | June 1, 1929 |
| May 30, 1925 | | May 30, 1925 |
| Jan. 1, 1929 | | June 1, 1929 |

* Includes Non-participating Bridges Sta. 539+10 to 539+40 - Sta. 633+11 to 634+30 and participating Bridge Sta. 256+35 to 256+95

Revised 5-20-25 Quantities Re.

APPROVED

COMMISSIONER - STATE LANS. HIGHWAYS AND IMPROVEMENTS

APPROVED

STATE HIGHWAY ENGINEER

RECOMMENDED FOR APPROVAL

DISTRICT ENGINEER - U. S. BUREAU OF PUBLIC ROADS

RECOMMENDED FOR APPROVAL

CHIEF ENGINEER - U. S. BUREAU OF PUBLIC ROADS

APPROVED

DIRECTOR - U. S. BUREAU OF PUBLIC ROADS

N.B. Gower
BRIDGE ENGINEER

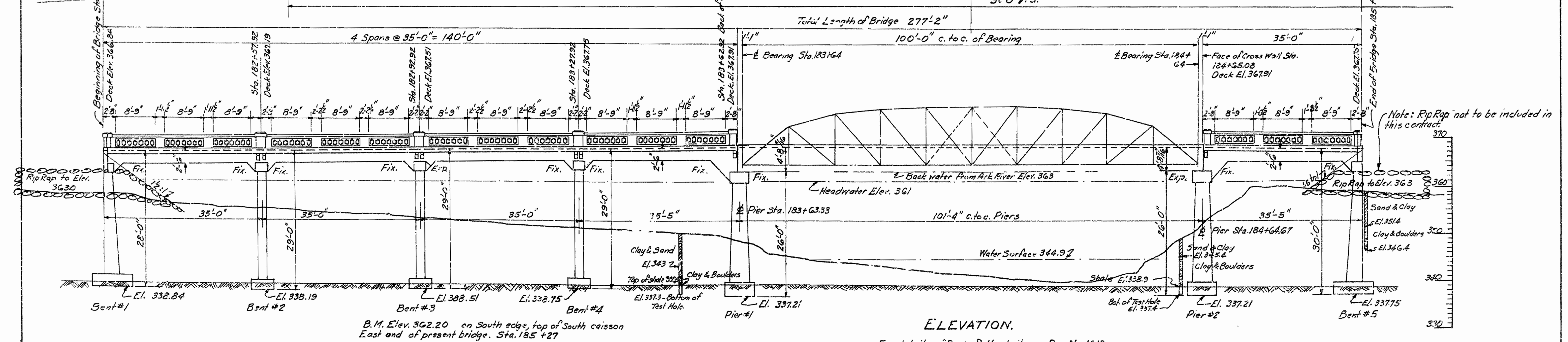
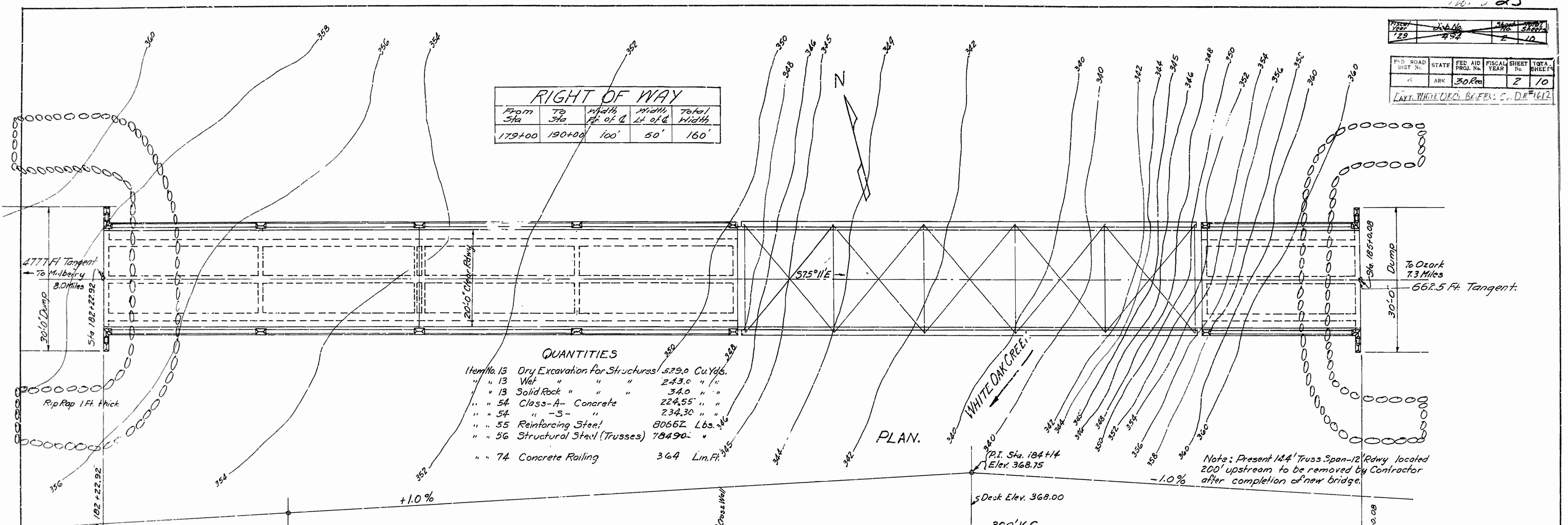
| | | | | | |
|------|---|---|----|----|----|
| 1957 | 2 | 6 | 16 | 4 | 10 |
| 129 | 4 | 5 | 2 | 10 | |

| F.D. ROAD DIST. No. | STATE | FED. AID PROJ. No. | FISCAL YEAR | SHEET No. | TOTAL SHEETS |
|---------------------|-------|--------------------|-------------|-----------|--------------|
| 14 | ARK | 30.000 | | 2 | 10 |

L.A.Y.T. WHITE OAK CREEK BRIDGE C. D. No. 1612

| RIGHT OF WAY | | | | |
|--------------|---------|-----------------|-----------------|-------------|
| From Sta. | To Sta. | Width ft. of R. | Width ft. of L. | Total Width |
| 179+00 | 190+00 | 100' | 50' | 150' |

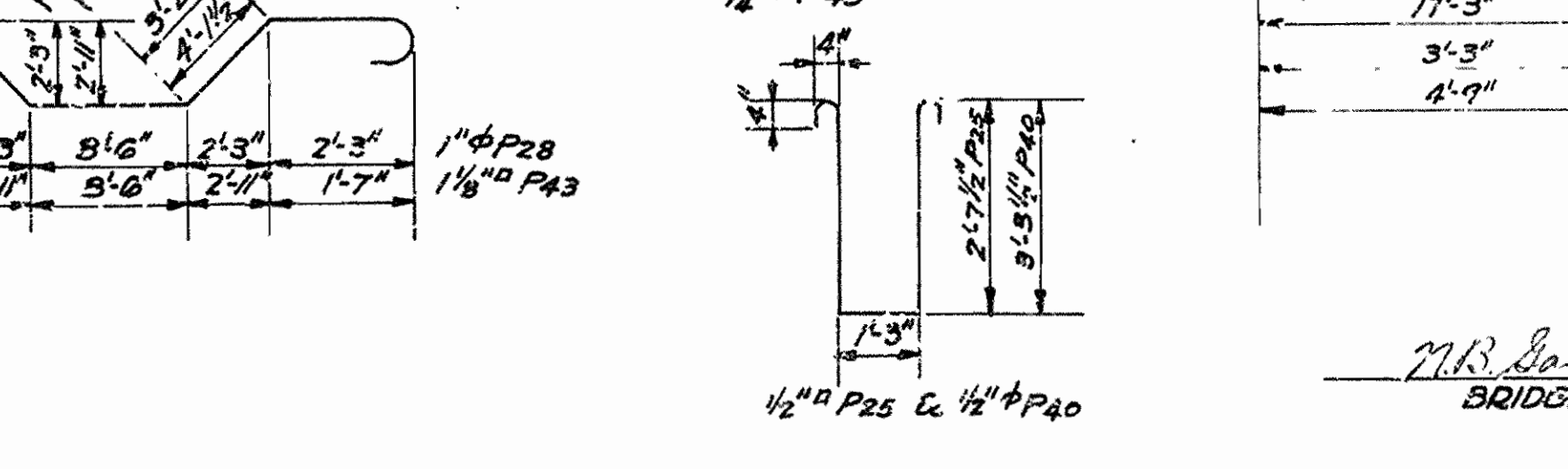
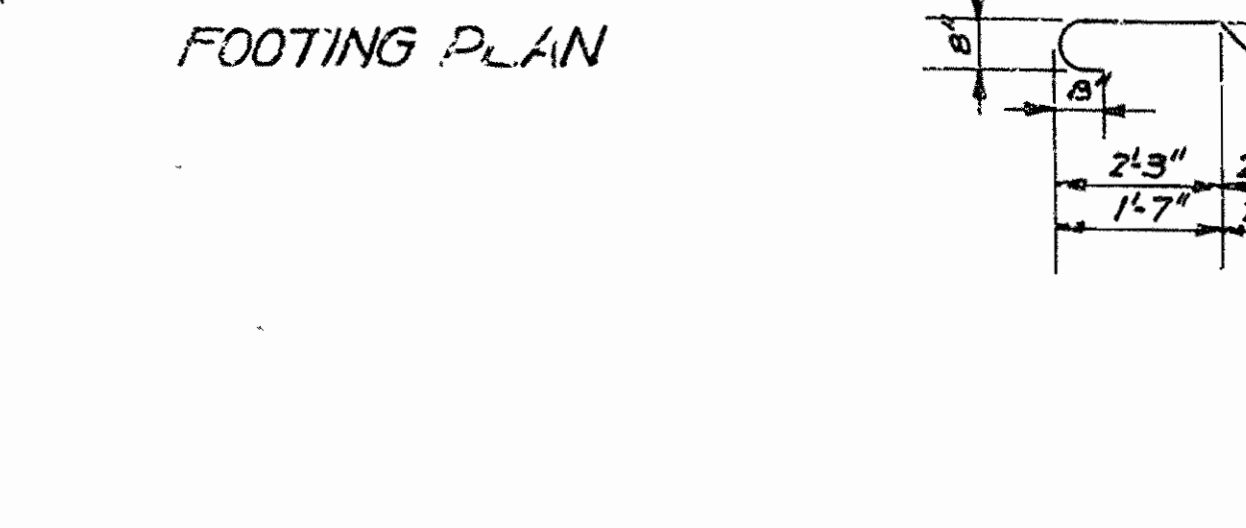
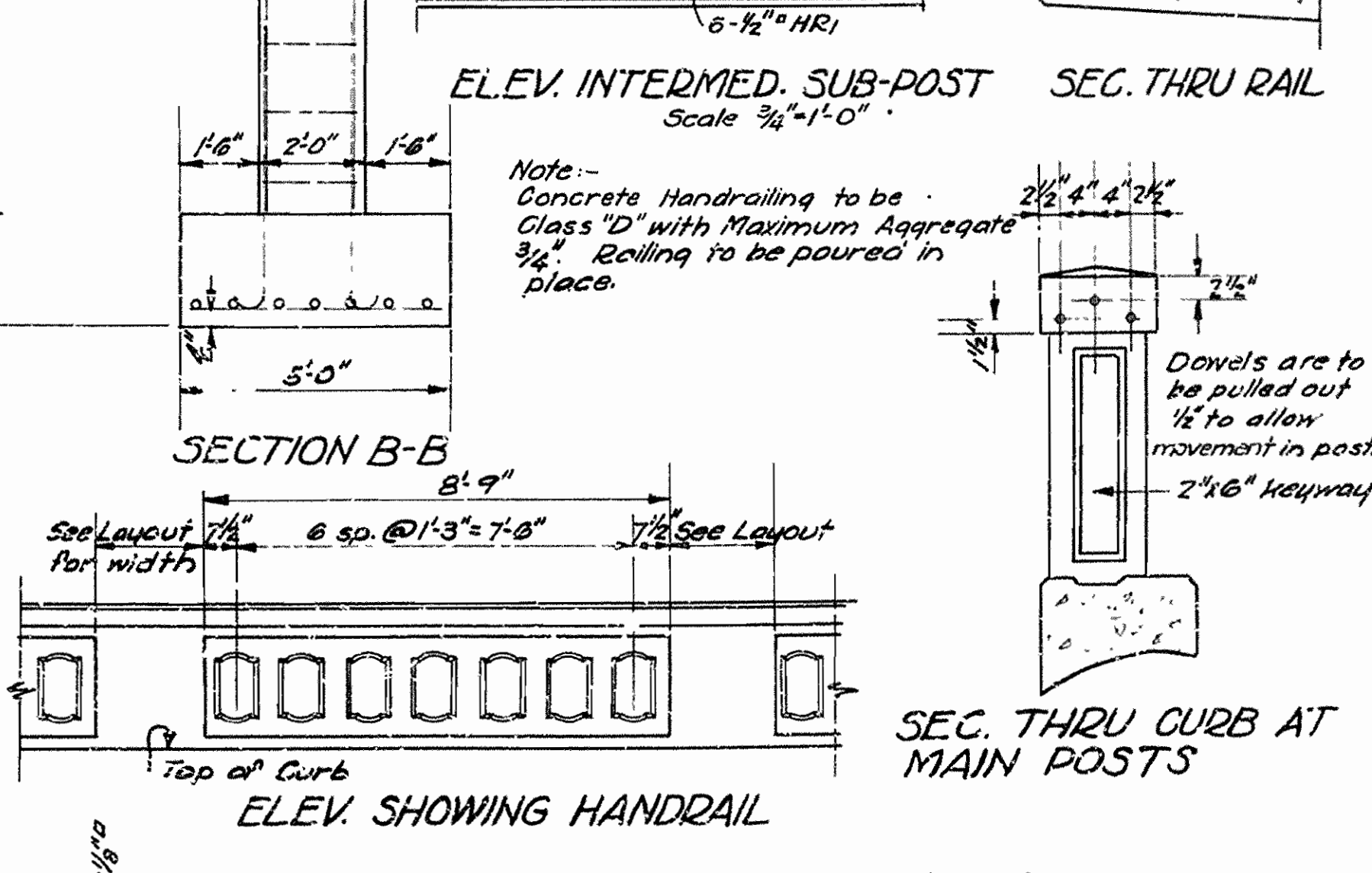
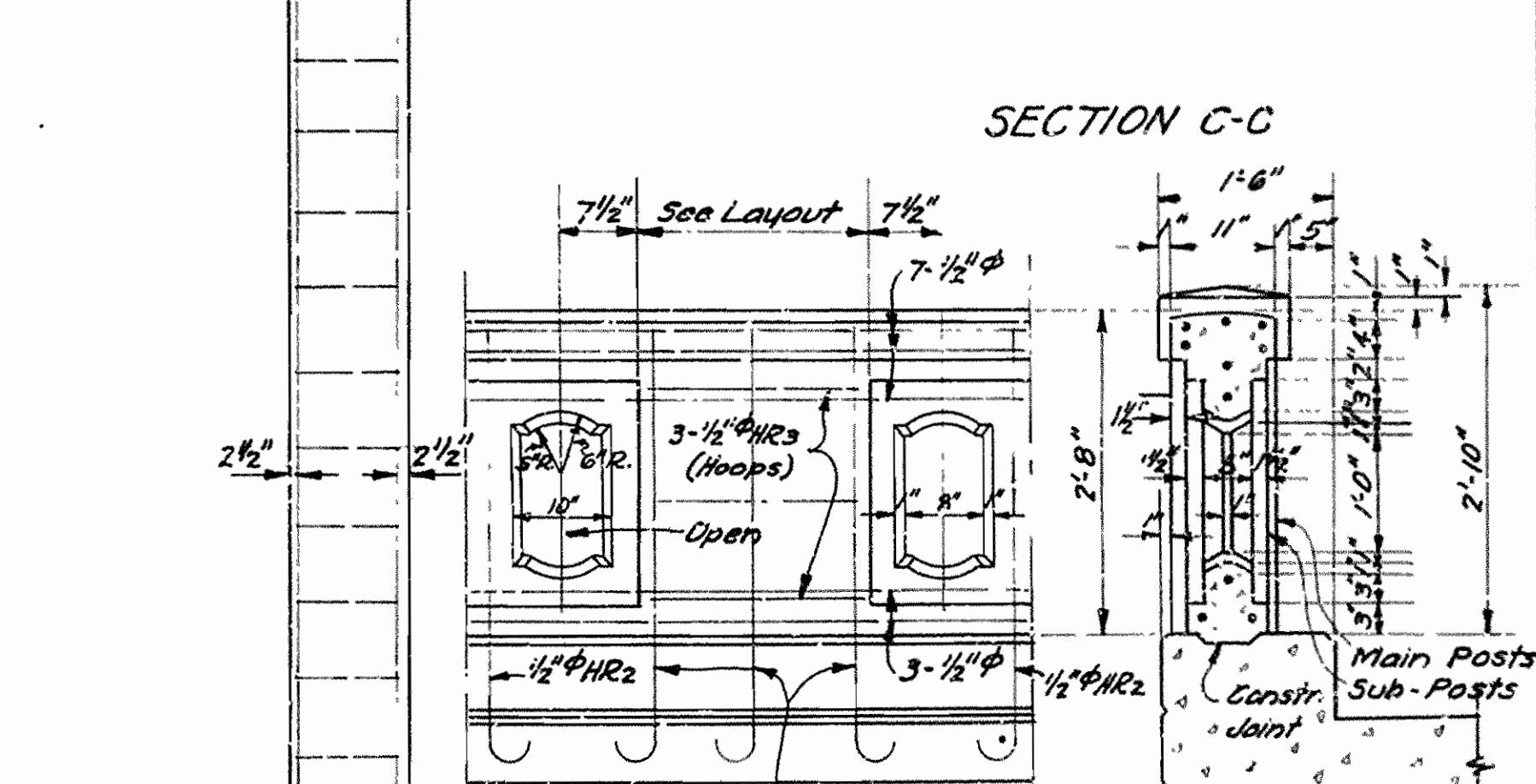
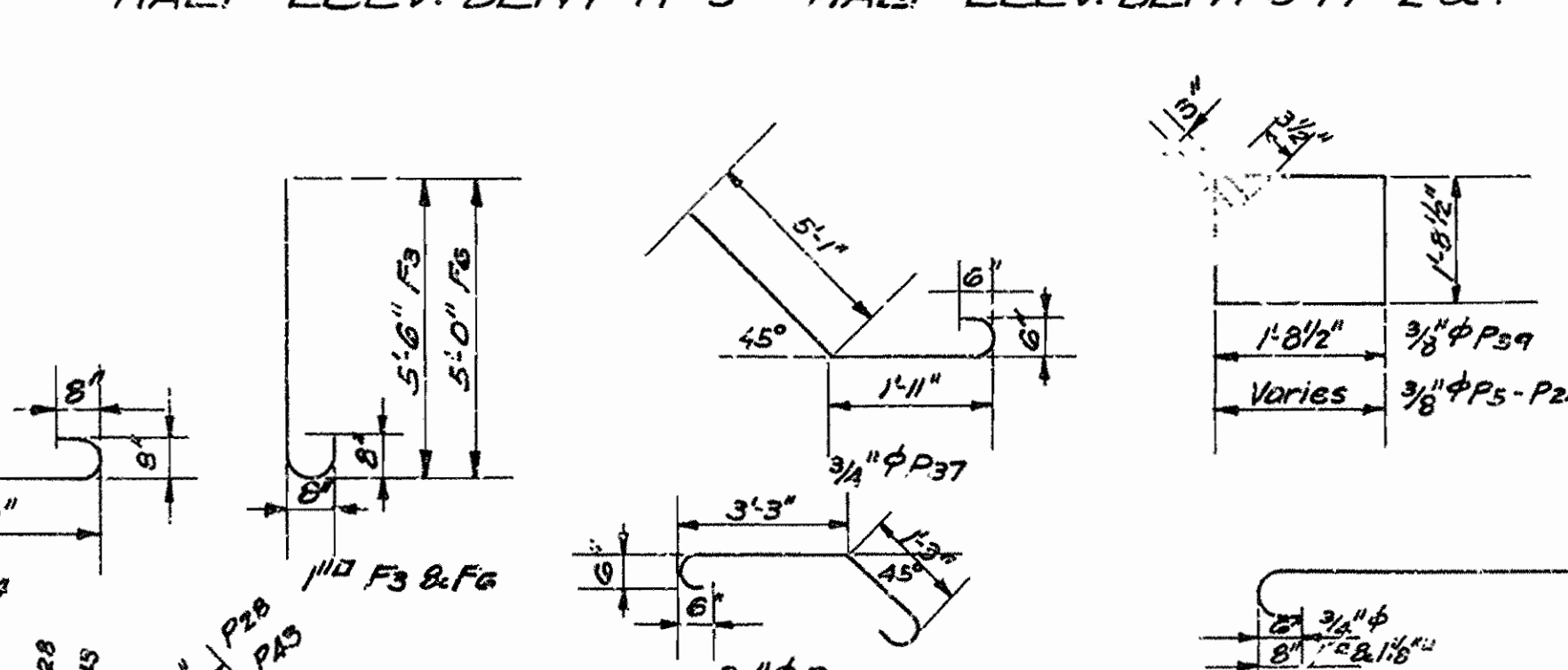
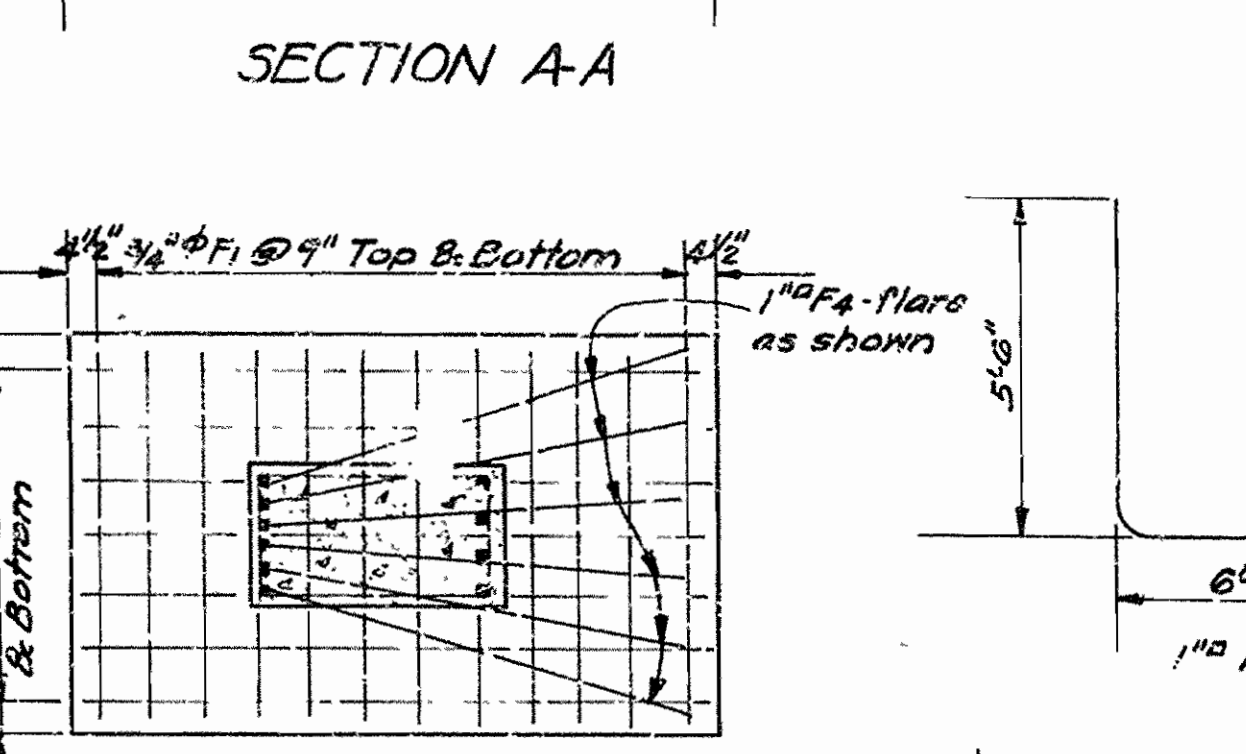
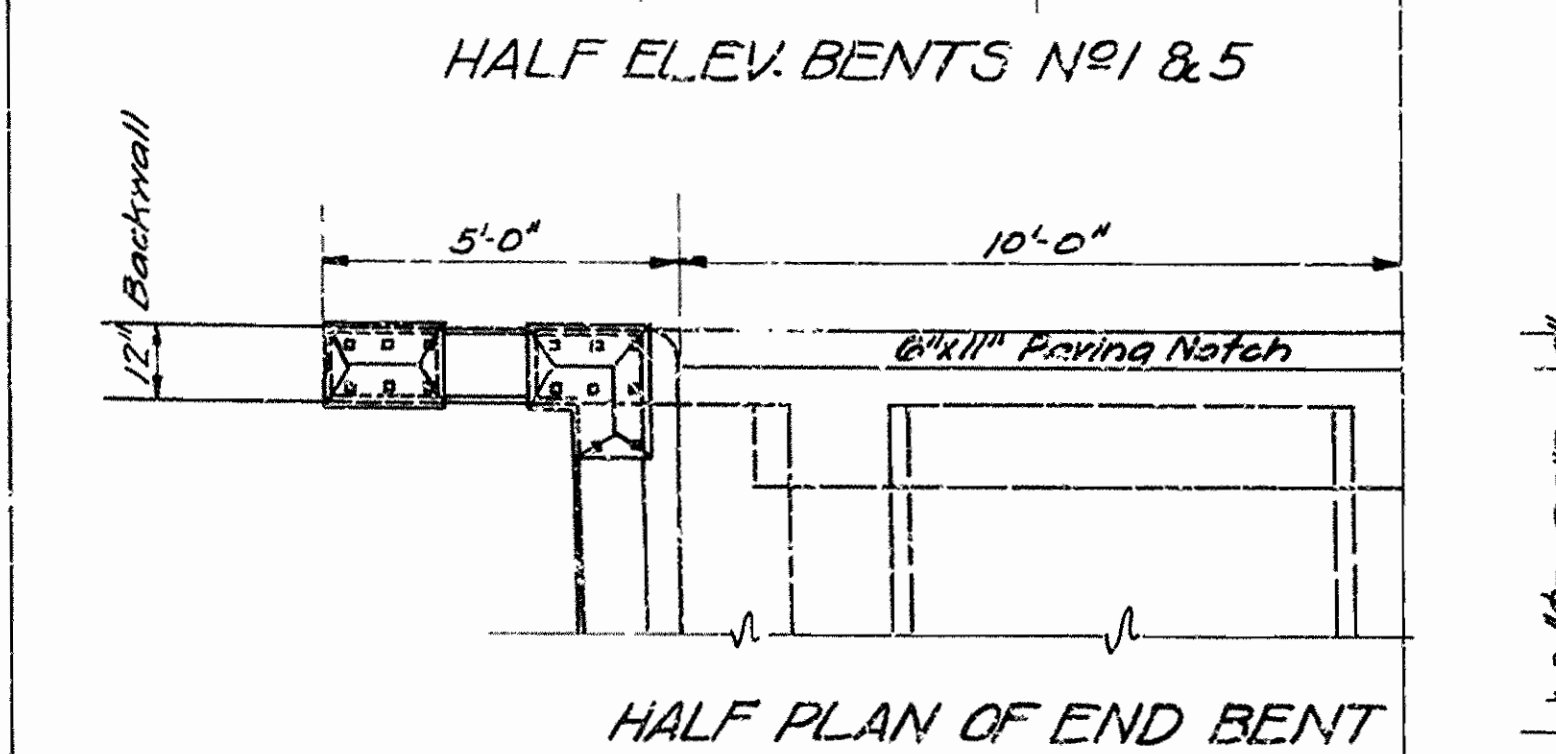
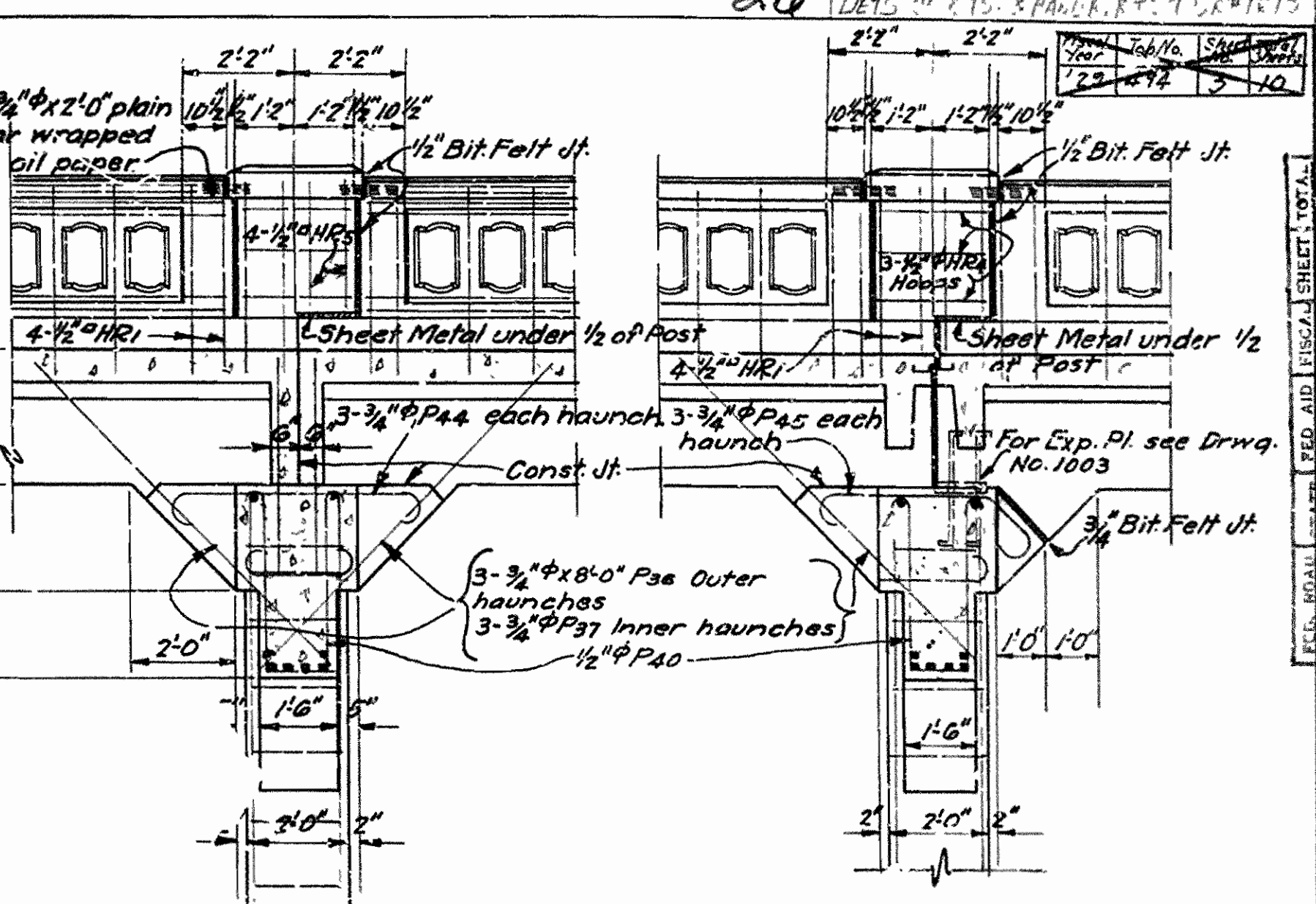
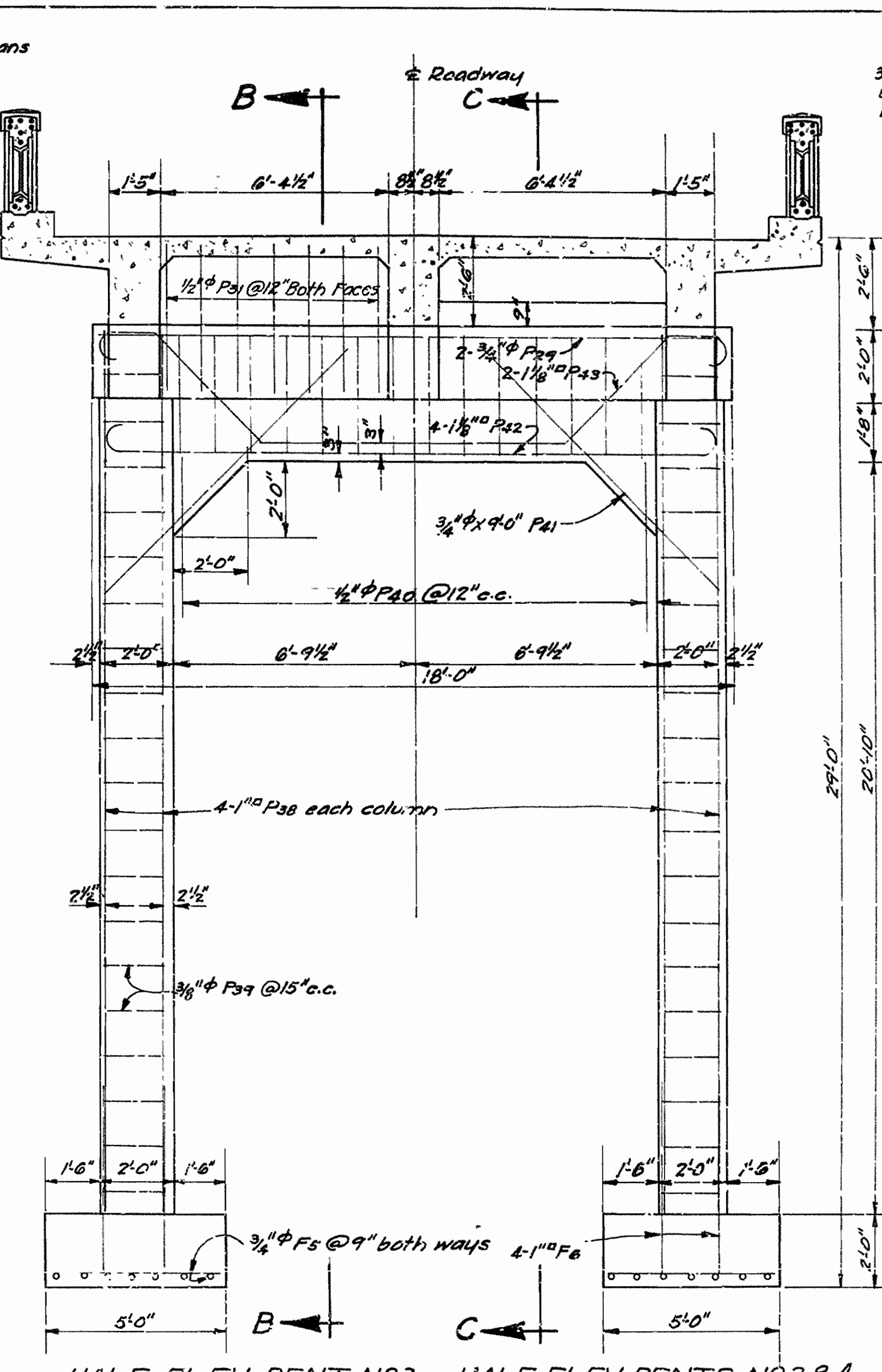
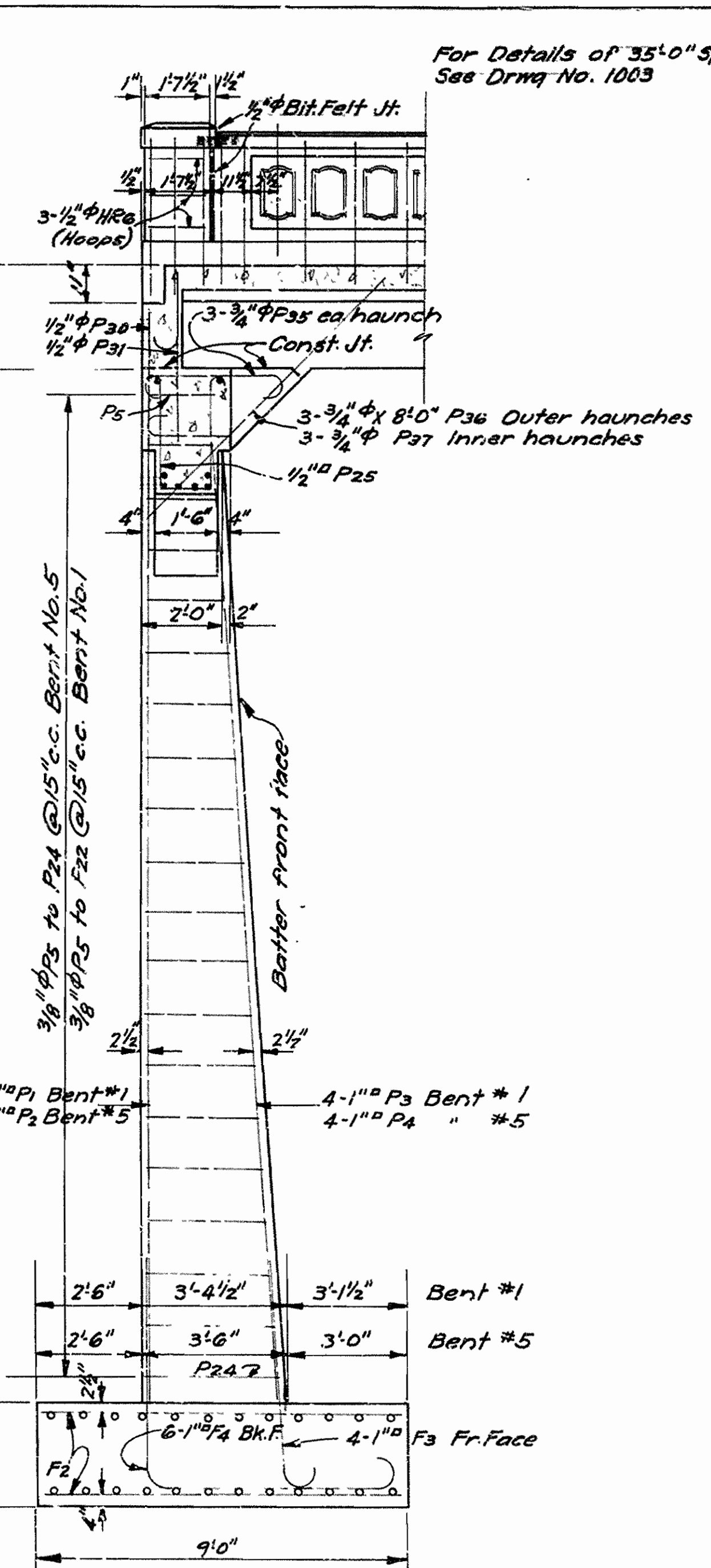
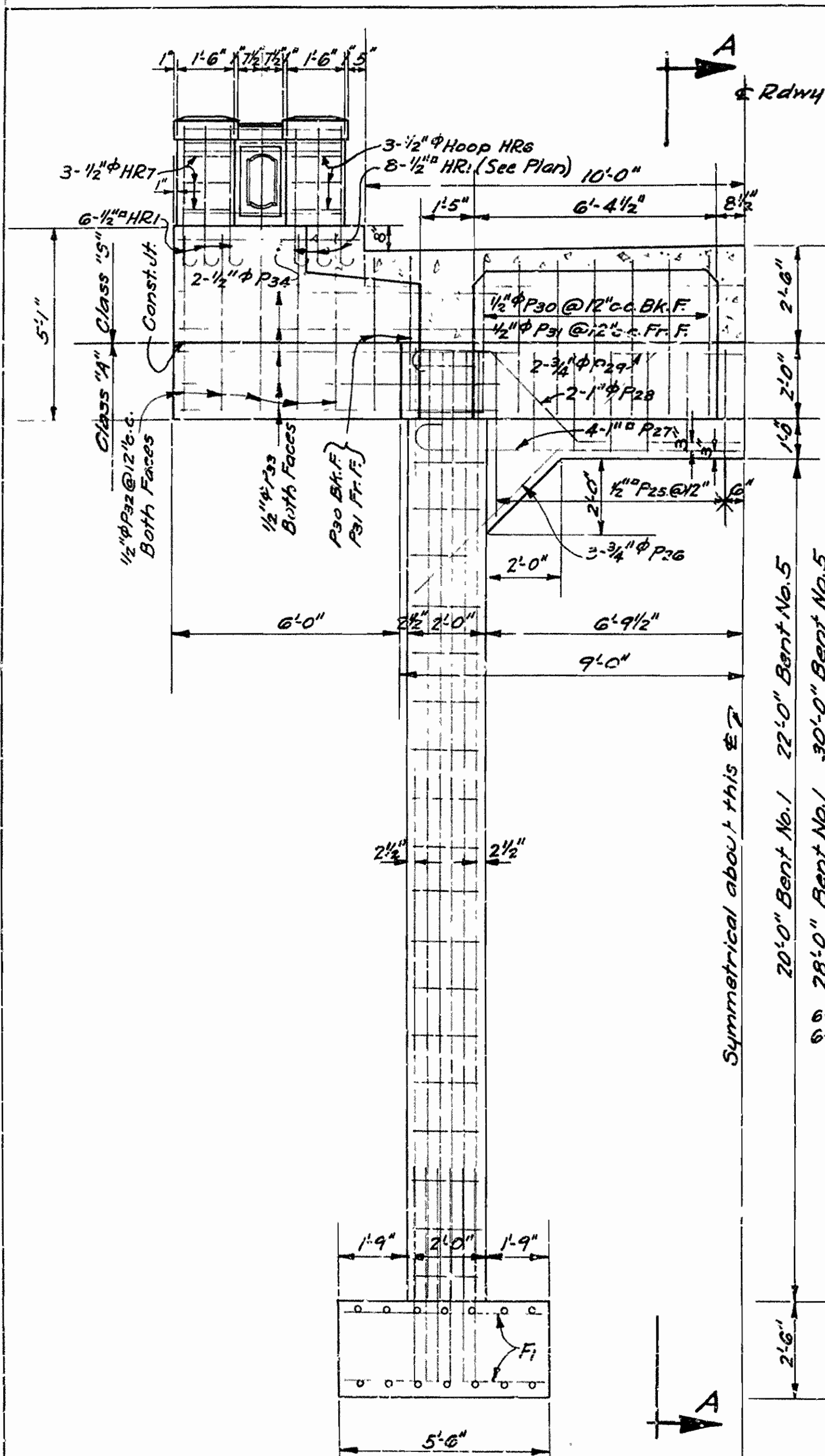
| QUANTITIES | | |
|-------------|-------------------------------|----------------|
| Item No. 13 | Dry Excavation for Structures | 529.0 Cu. Yds. |
| " 13 | Wet " " " | 243.0 " " |
| " 13 | Solid Rock " " " | 34.0 " " |
| " 54 | Class-A Concrete | 224.55 " " |
| " 54 | " - S - | 234.30 " " |
| " 55 | Reinforcing Steel | 80662 Lbs. #6 |
| " 56 | Structural Steel (Trusses) | 78490 " " |
| " 74 | Concrete Railing | 364 Lin. Ft. |



LAYOUT
BRIDGE OVER WHITE OAK CREEK
FRANKLIN COUNTY
ROUTE 64 SEC. 3
ARKANSAS STATE HIGHWAY DEPT.
LITTLE ROCK, ARK.

J.P.C.
BRIDGE ENGINEER

For Details of 35'-0" Spans See Drwg No. 1003



For General Notes, See Drawing No. 1003

DETAILS OF BENTS AND HANDRAIL
BRIDGE OVER WHITE OAK CREEK
FRANKLIN COUNTY
ROUTE 64 SEC. 3
ARKANSAS STATE HIGHWAY DEPARTMENT
LITTLE ROCK, ARK.

Drawn by L.P.G. Date 5/26/29
Traced by J.R. Date 5/1/29
Checked by _____ Date _____

Scale 3/8"=1'-0" unless noted

BRIDGE NO. 1154 DRAWING NO. 1613

M.B. Jordan
BRIDGE ENGINEER

