

276

STATE OF ARKANSAS
STATE HIGHWAY DEPARTMENT

FISCAL YEAR	JOB NO.	SHEET No.	TOTAL SHEETS
1929	493	1	10
Prop. BRs. OVER QUACHITA RIVER, POLK COUNTY, ARK.			
FED. ROAD DIST. No.	STATE	FED. AID PROJ. No.	FISCAL YEAR
6	ARK.		

PLAN OF PROPOSED BRIDGES
OVER
QUACHITA RIVER
POLK COUNTY

INDEX OF SHEETS

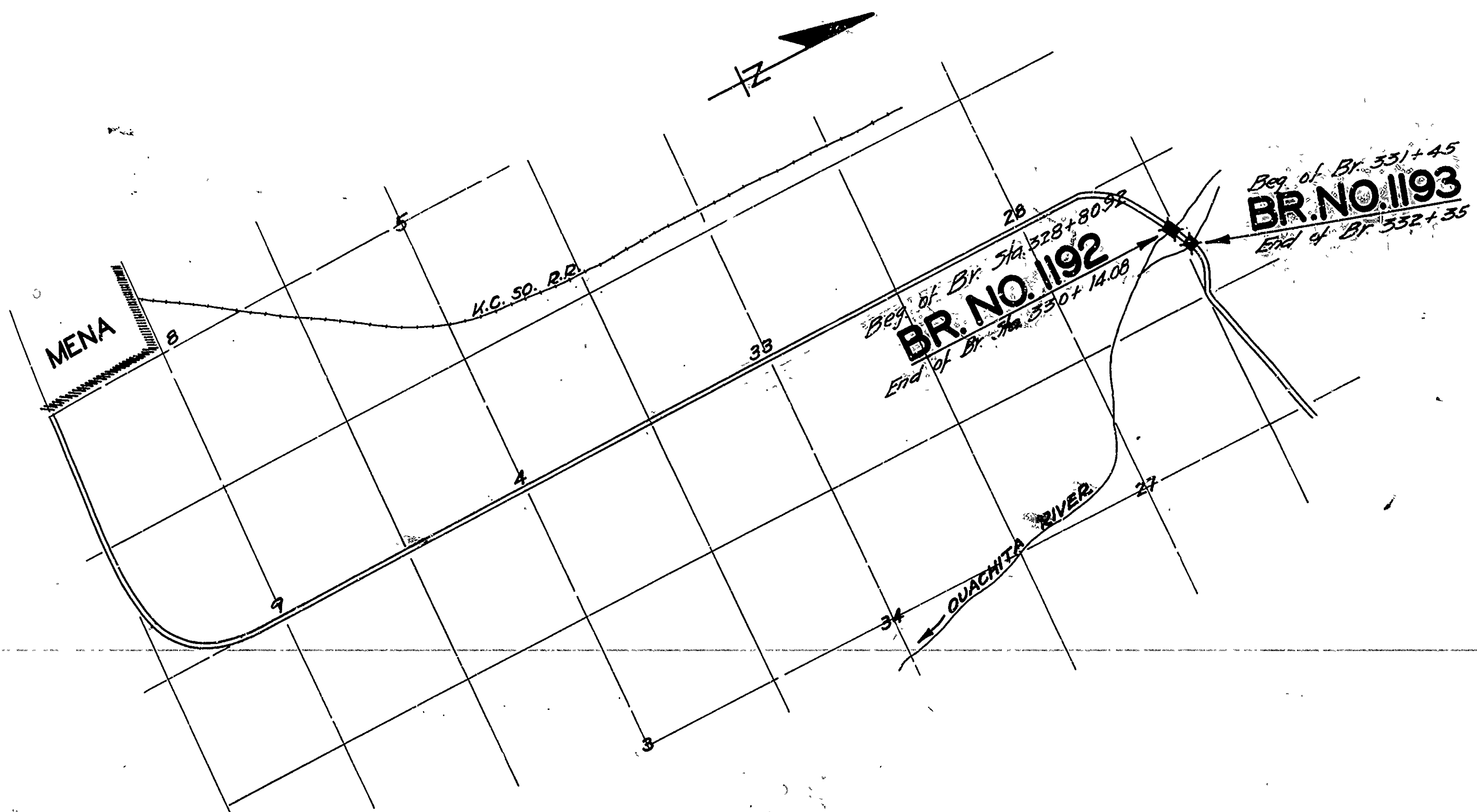
Sheet No.	Drwg No.	Title Sheet
" 2	" 1558	Layout Br. No. 1192
" 3	" 1560	Details Abut. No. 1, Br. No. 1192
" 4	" 1561	" " " 2, " " "
" 5	" 1562	" of Piers & Bents, Br. No. 1192
" 6	" 1092	Stand. 70' Pony Truss
" 7	" 1002	" 30' R.C.D. Girder Span
" 8	" 1563	Layout Br. No. 1193
" 9	" 1564	Details Abuts. Br. No. 1193
" 10	" 1565	" Bents, " " "

ROUTE 71 SEC. 10
JOB No 493
FEDERAL AID PROJECT No.

QUANTITIES

Item No.	Description	Quantity
12	Common Excavation (Channel)	2369.7 Cu. Yds.
13	Dry Excav. For Structures	589.7 " "
13	Wet " " "	383.6 " "
13	Rock " " "	31.76 " "
54	Class "A" Concrete	2074.1 " "
54	" " " "	18190 " "
55	Reinforcing Steel	87073.0 Lbs.
56	Struct. Steel in Trusses	544.70 " "
74	Concrete Railing	355.83 Lin. Ft.

⊕ Non-participating in F.A.P. No.



LAYOUT

LENGTH OF PROJECT = 400'-0" 0.0758 MI.
LENGTH OF BRIDGES = 223'-2"

APPROVED
COMMISSIONER STATE LANDS HIGHWAYS AND IMPROVEMENTS
APPROVED
STATE HIGHWAY ENGINEER
RECOMMENDED FOR APPROVAL
DISTRICT ENGINEER IN CHARGE OF PUBLIC ROADS
RECOMMENDED FOR APPROVAL
CHIEF ENGINEER IN CHARGE OF PUBLIC ROADS
APPROVED
DIRECTOR OF DIVISION OF PUBLIC WORKS

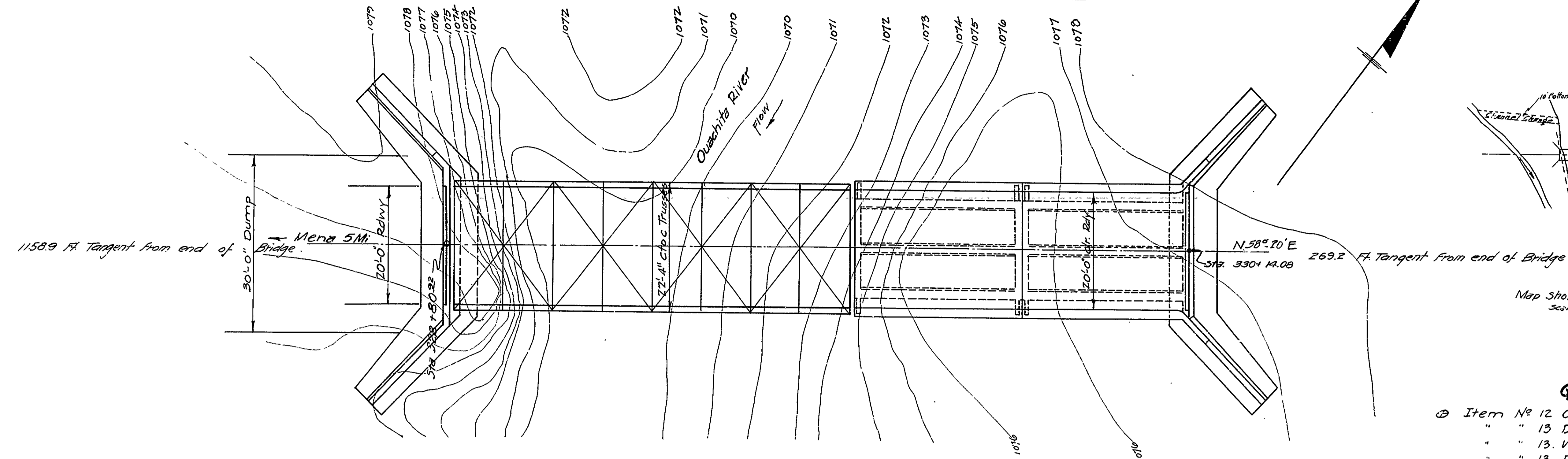
M.B. [Signature]
BRIDGE ENGINEER

BRIDGE No. 1192 & 1193 DRAWING No. 1558

RIGHT OF WAY				
From Sta	To Sta	Width Rt. of W.	Width Lt. of W.	Total Width
325	335	120'	80'	200'

FISCAL YEAR	Job No	SHEET NO	TOTAL SHEETS
1929	493	2	10

FED. ROAD DIST. No.	STATE	FED. AID PROJ. No.	FISCAL YEAR	SHEET No.	TOTAL SHEETS
3	ARK.				

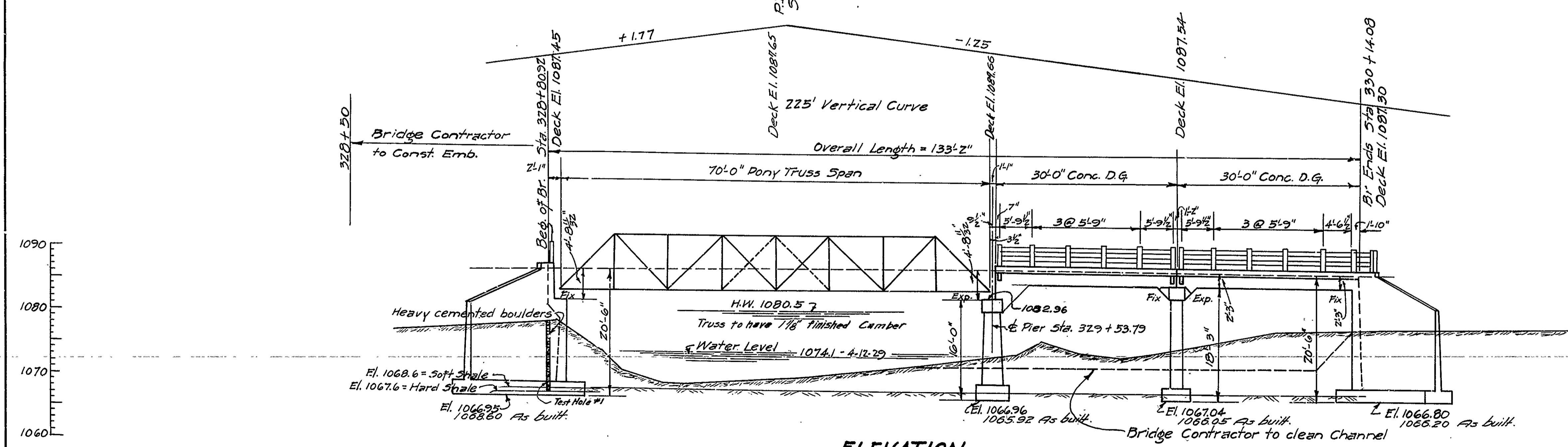


PLAN

Quantities

⊕ Item No 12 Common Exc. (Channel)	484.6	c.y.
" " 13 Dry Excavation	235.2	" "
" " 13 Wet "	334.9	" "
" " 13 Rock "	92.6	" "
" " 54 Class "A" Concrete	225.58	" "
" " 54 " "5" "	104.69	" "
" " 55 Reinforcing Steel	43762.0	lbs.
" " 56 Structural Steel Trusses	54470.0	" "
" " 74 Concrete Railing	136.25	lin. ft.

⊕ Non participating F.A.P. Item.



ELEVATION

B.M. El. = 1077.48 nail in Root
15" Oak. 60' Rf. 328+75

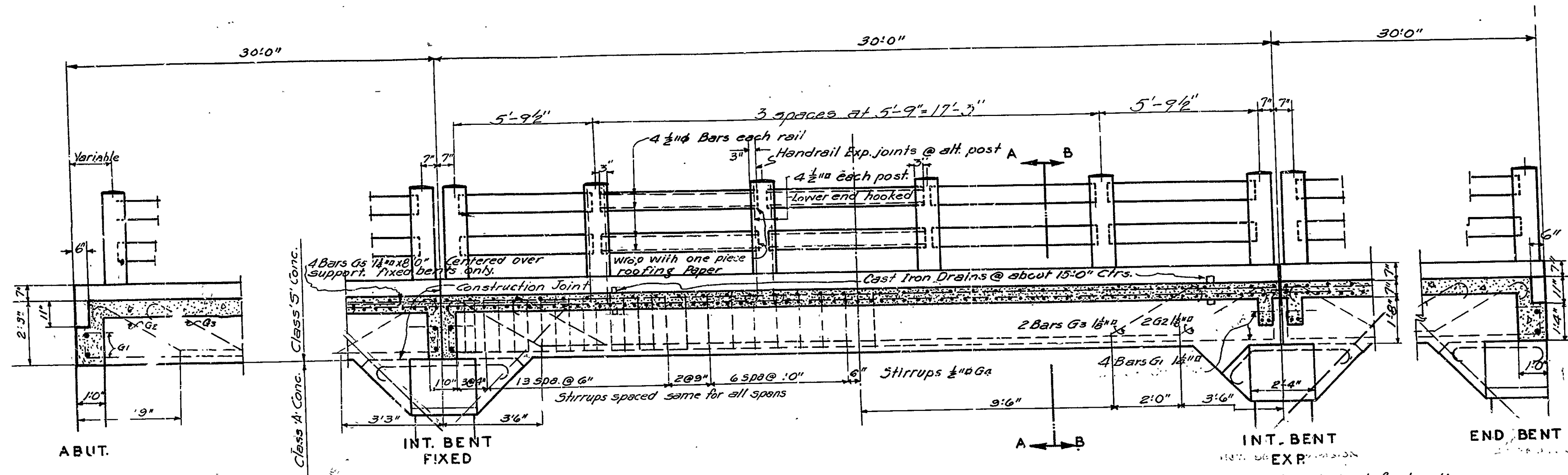
For Details Abt. #1 See Drwg. # 1560
 " " #2 " " 1561
 " " Pier & Bent See Drwg. # 1562
 " " Std. 70'-0" steel Span See Drwg. # 1092
 " " " 30'-0" R.C.D. Gir. " " # 1002

Drainage Area: 25 sq. mi. mountainous

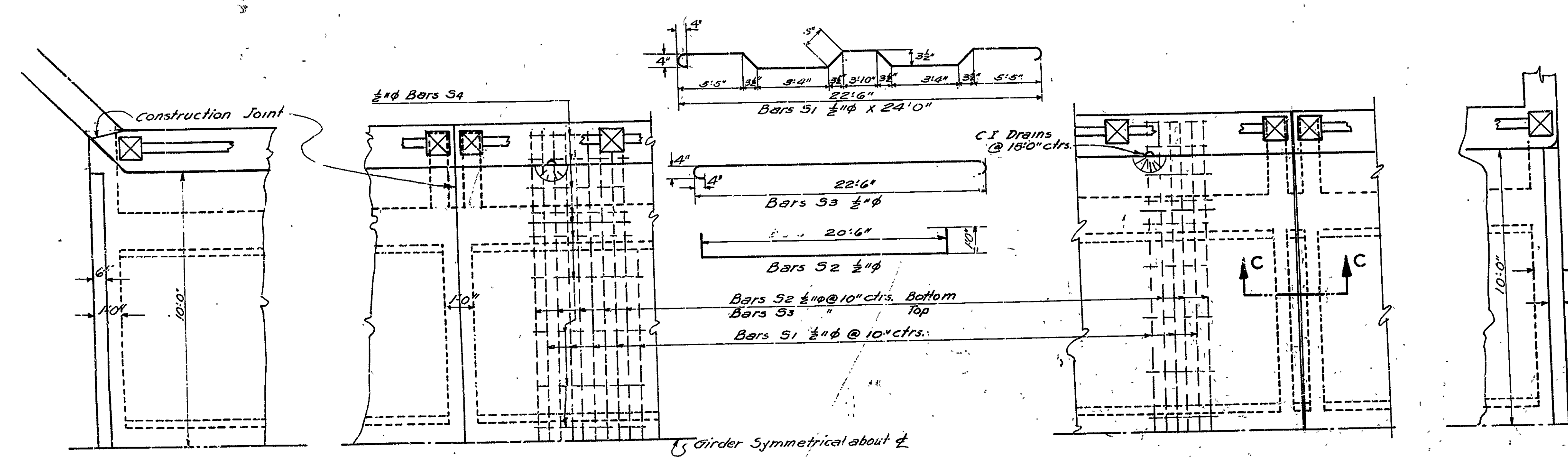
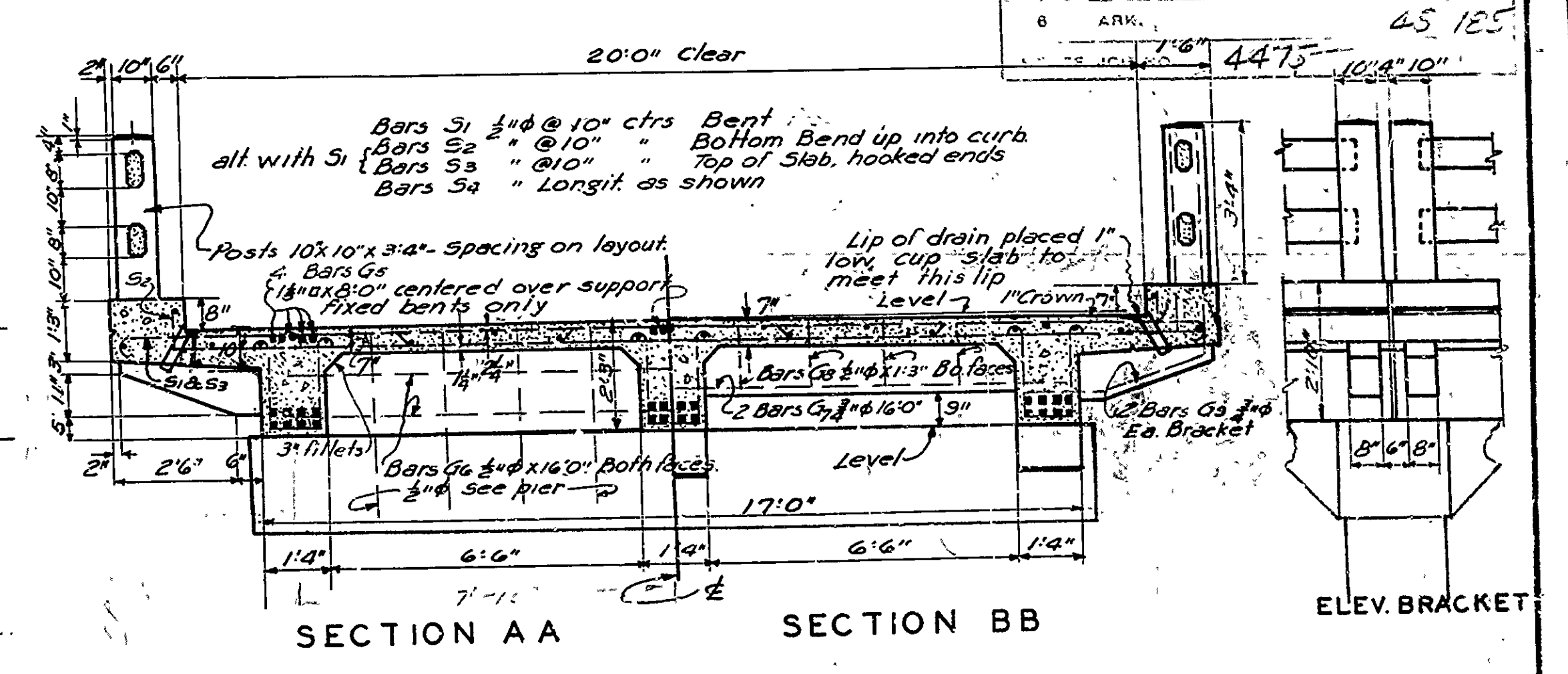
LAYOUT
 BRIDGE OVER OUACHITA RIVER
 POLK COUNTY
 ROUTE 71 SEC. 10
 ARKANSAS STATE HIGHWAY DEPARTMENT
 LITTLE ROCK, ARK.

Drawn By: E.O.G. Date 4-29-29
 Traced By: E.H.C. Date 4-30-29
 Checked By: G.W. Date 4-30-29
 BRIDGE No 1192
 Scale: 1" = 10' ft.
 DRAWING No 1559

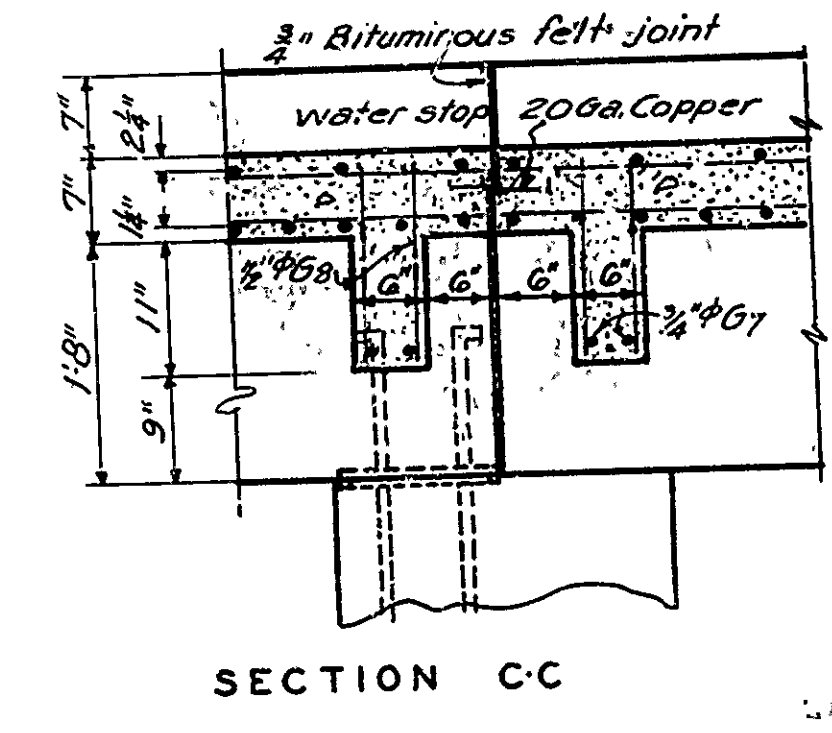
N.B. Harris
 BRIDGE ENGINEER



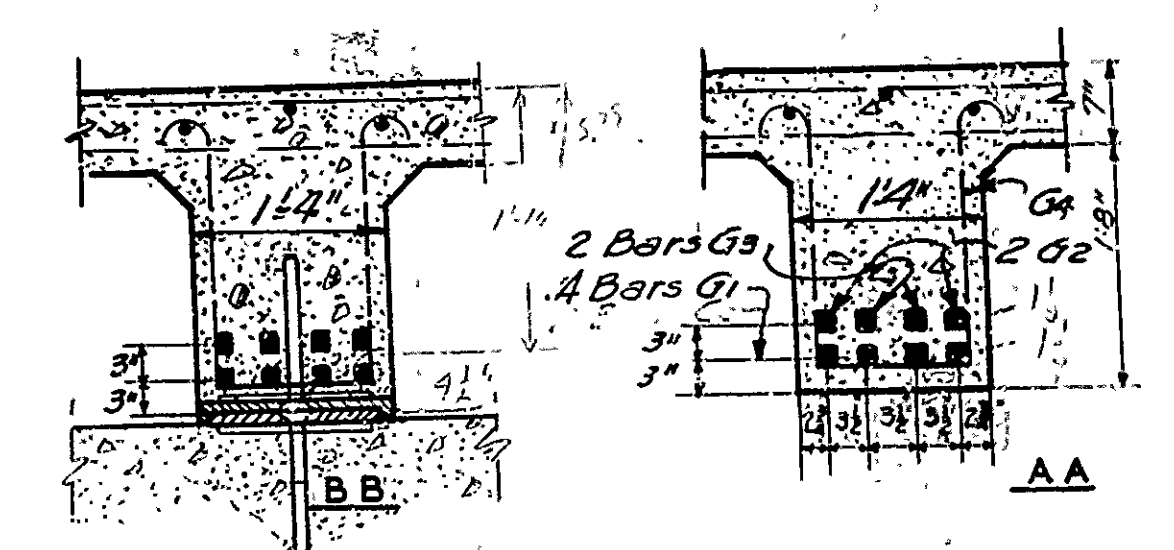
LONGITUDINAL SECTION



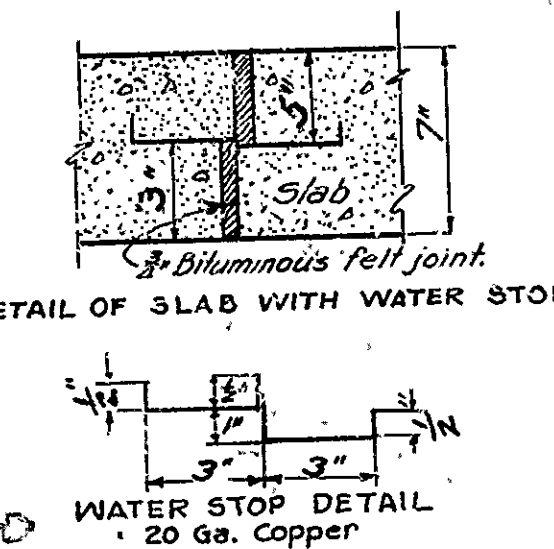
TYPICAL PLAN DETAILS



SECTION C C



TYPICAL SECTIONS THRU GIRDERS

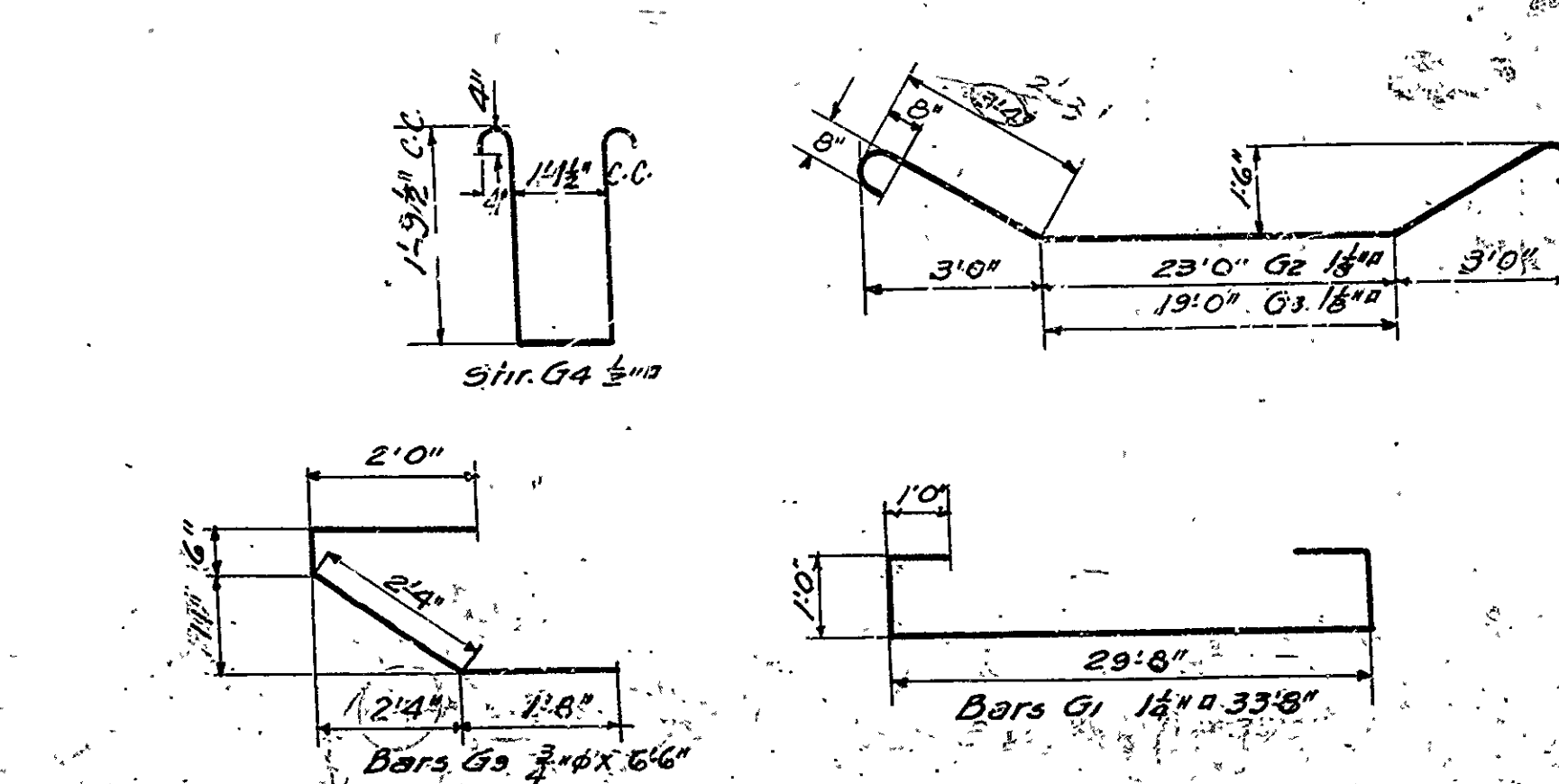


DETAIL OF SLAB WITH WATER STOP

WATER STOP DETAIL

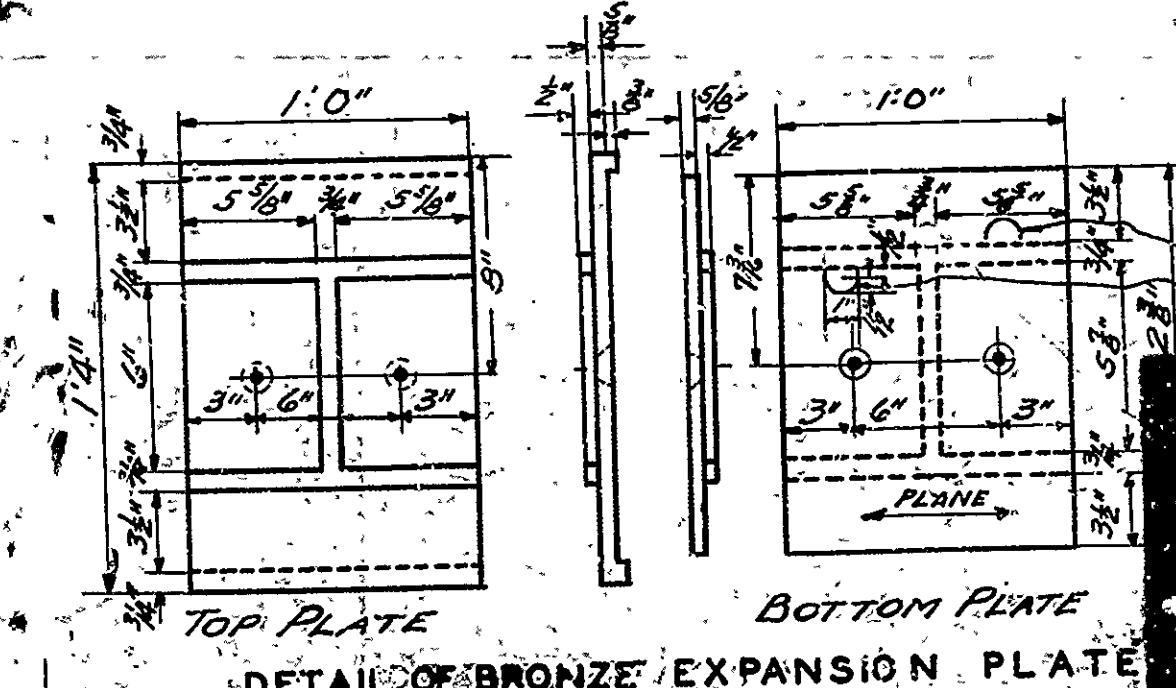
GENERAL NOTES
 All exposed corners to have 3/4\"/>

Note: This Drawing included in Job No. 4475 for reference only.



SEC. THRU RAILS

CAST IRON ROADWAY DRAINS



DETAIL OF BRONZE EXPANSION PLATE

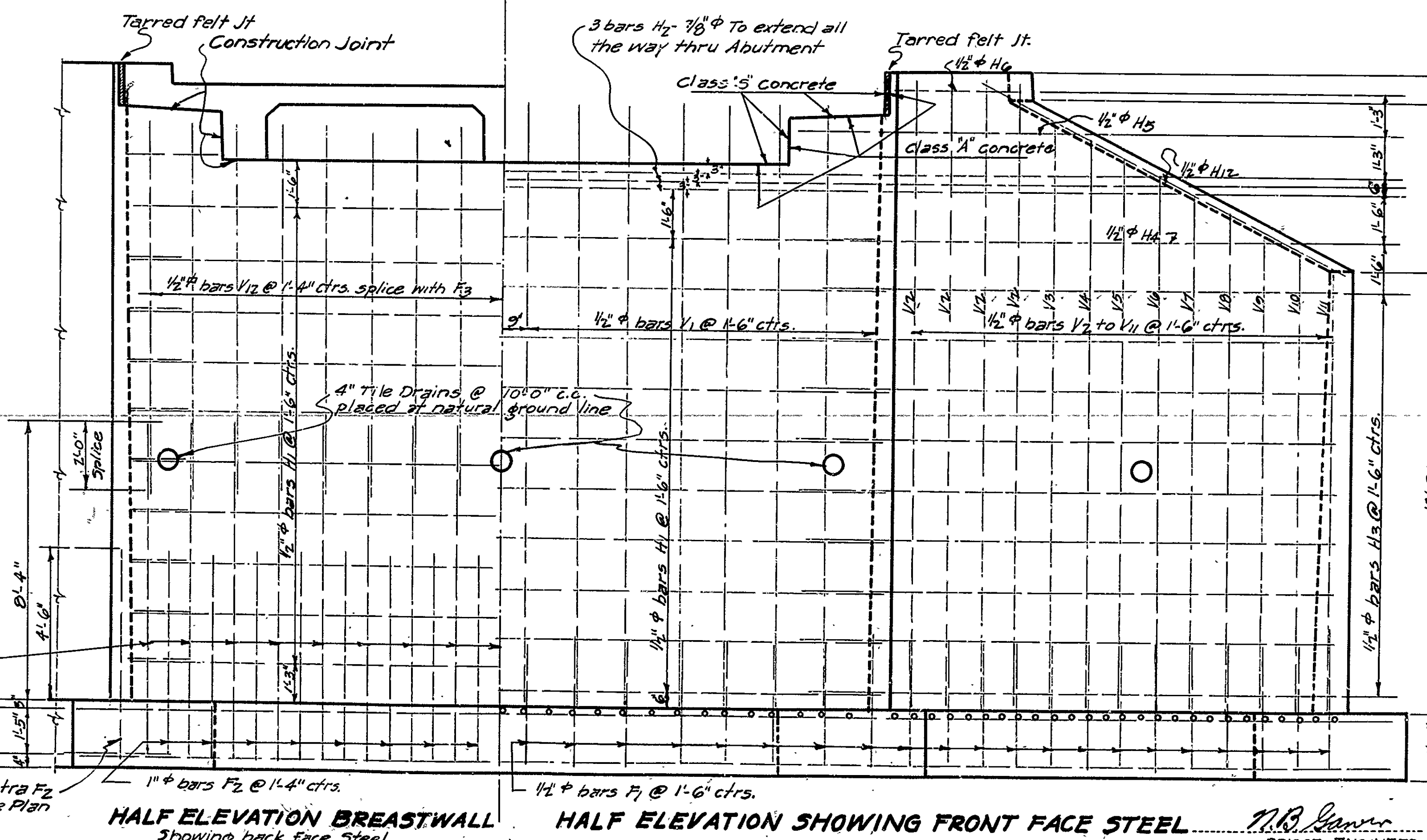
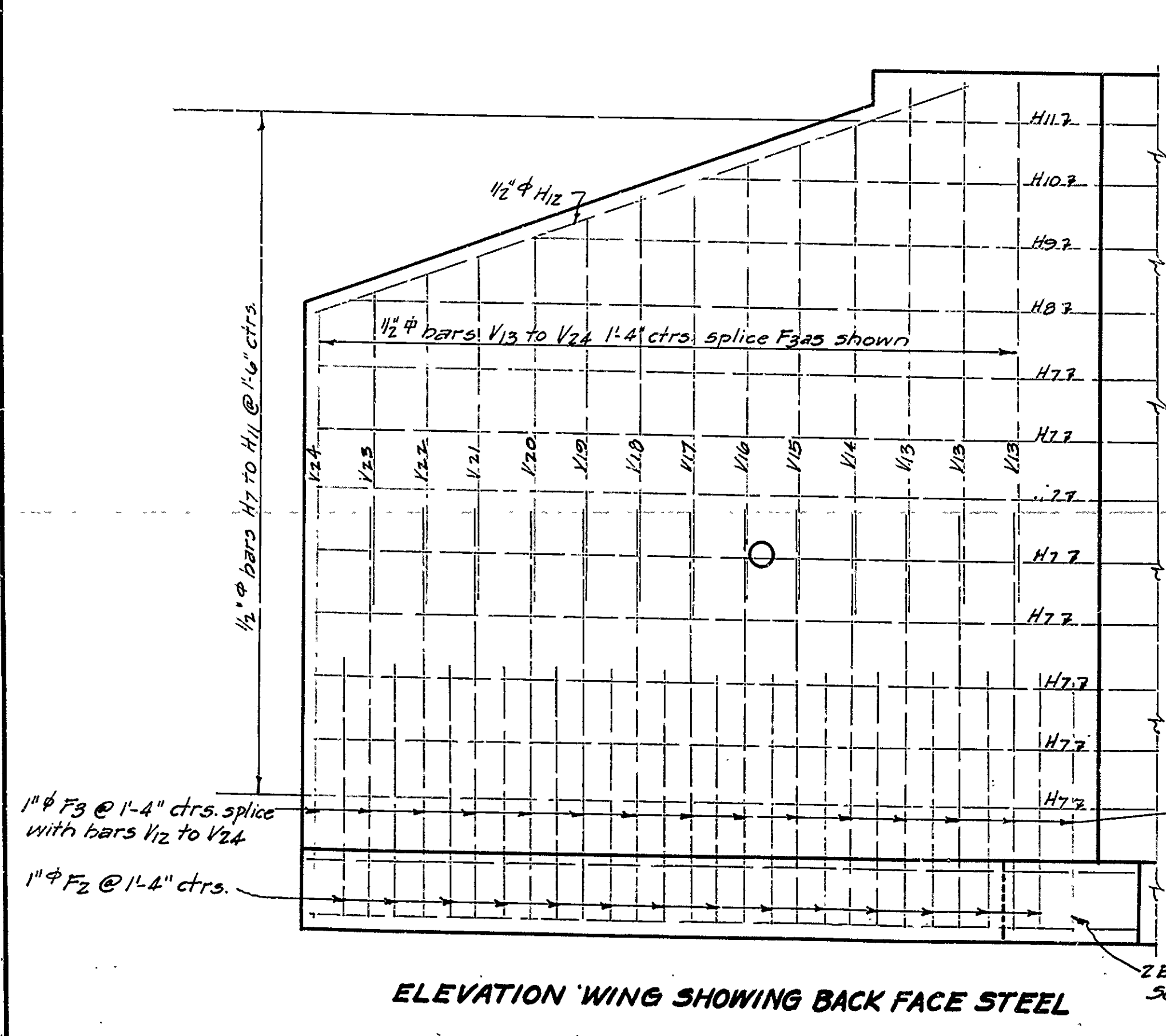
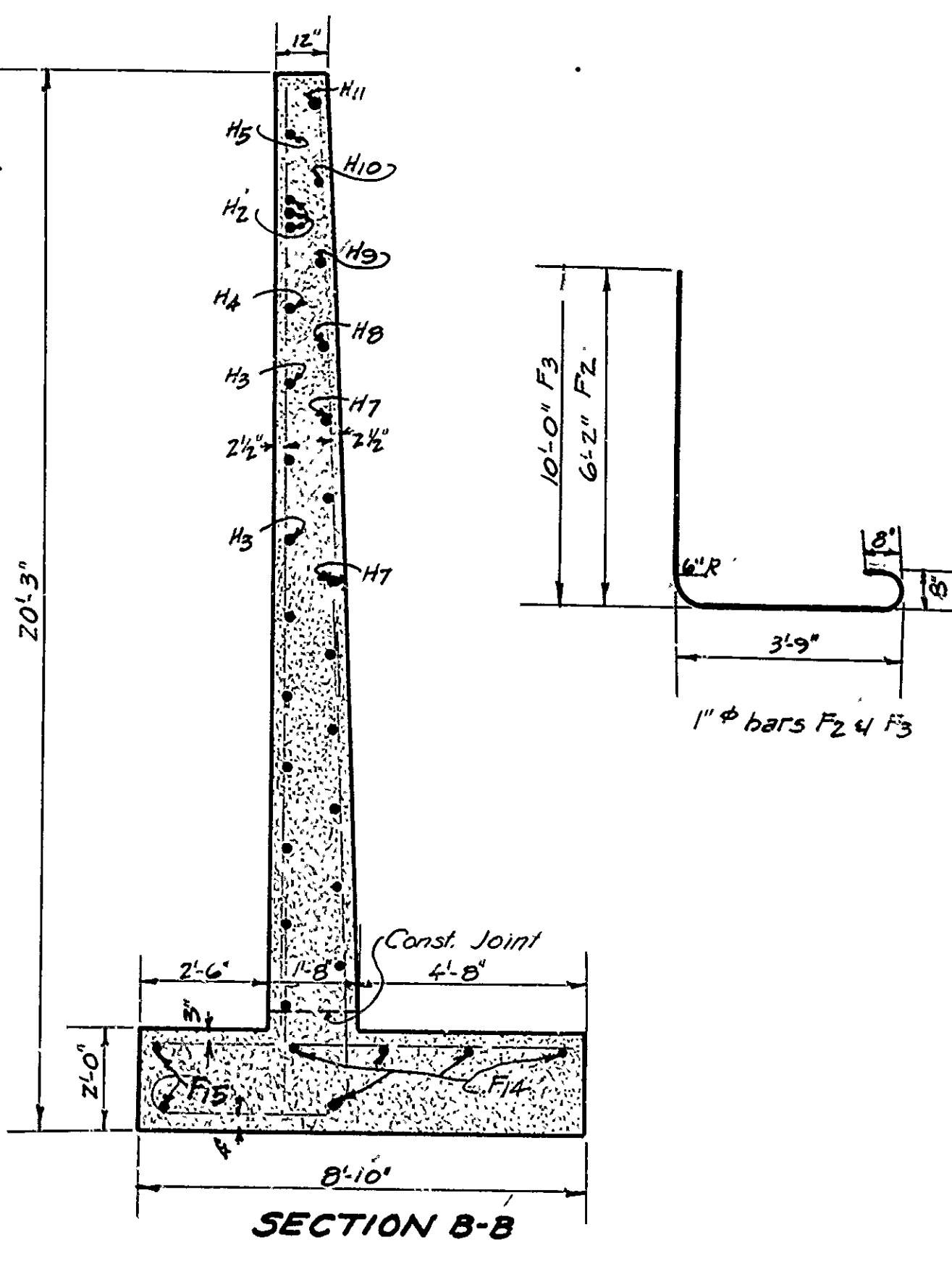
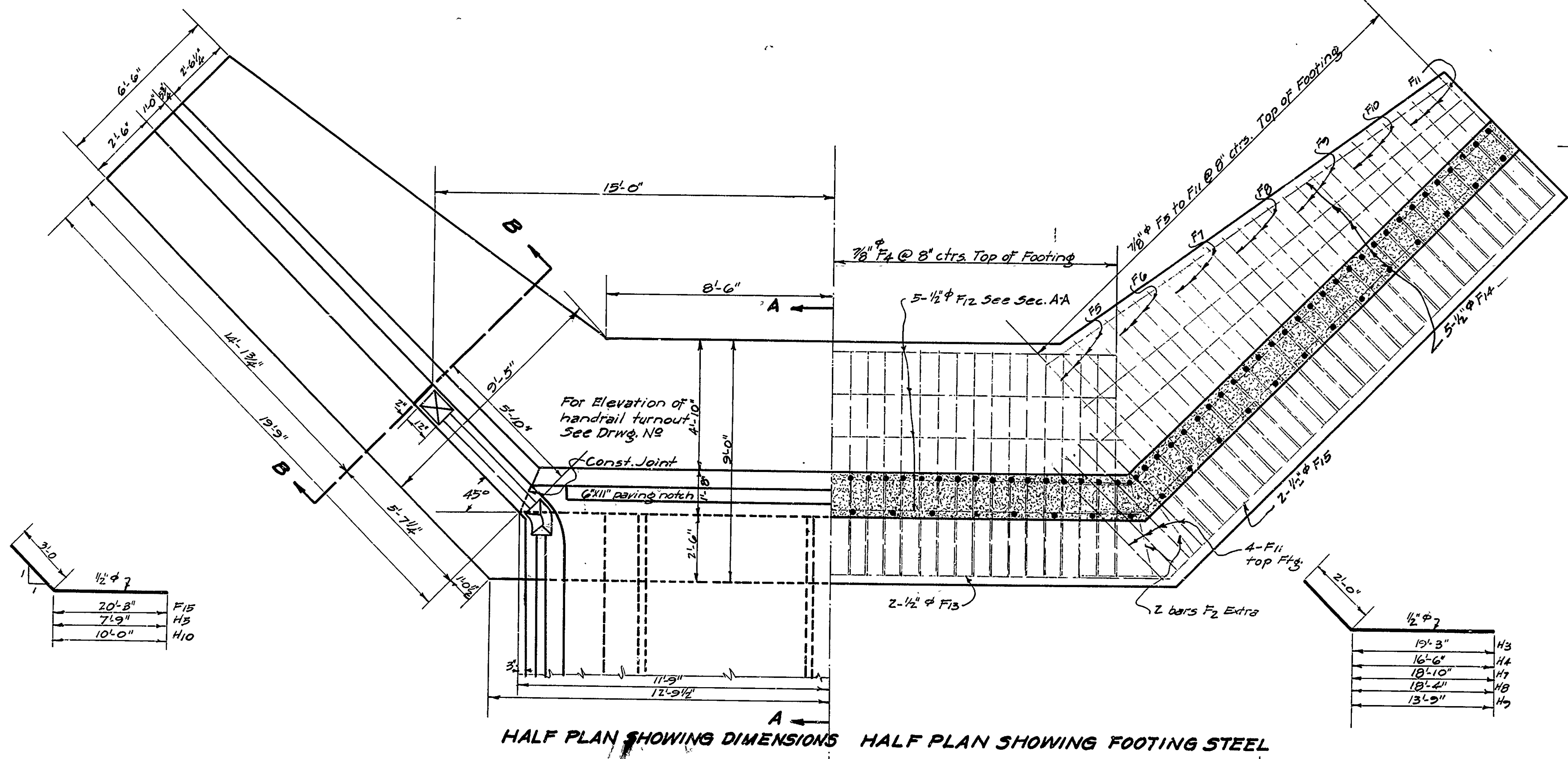
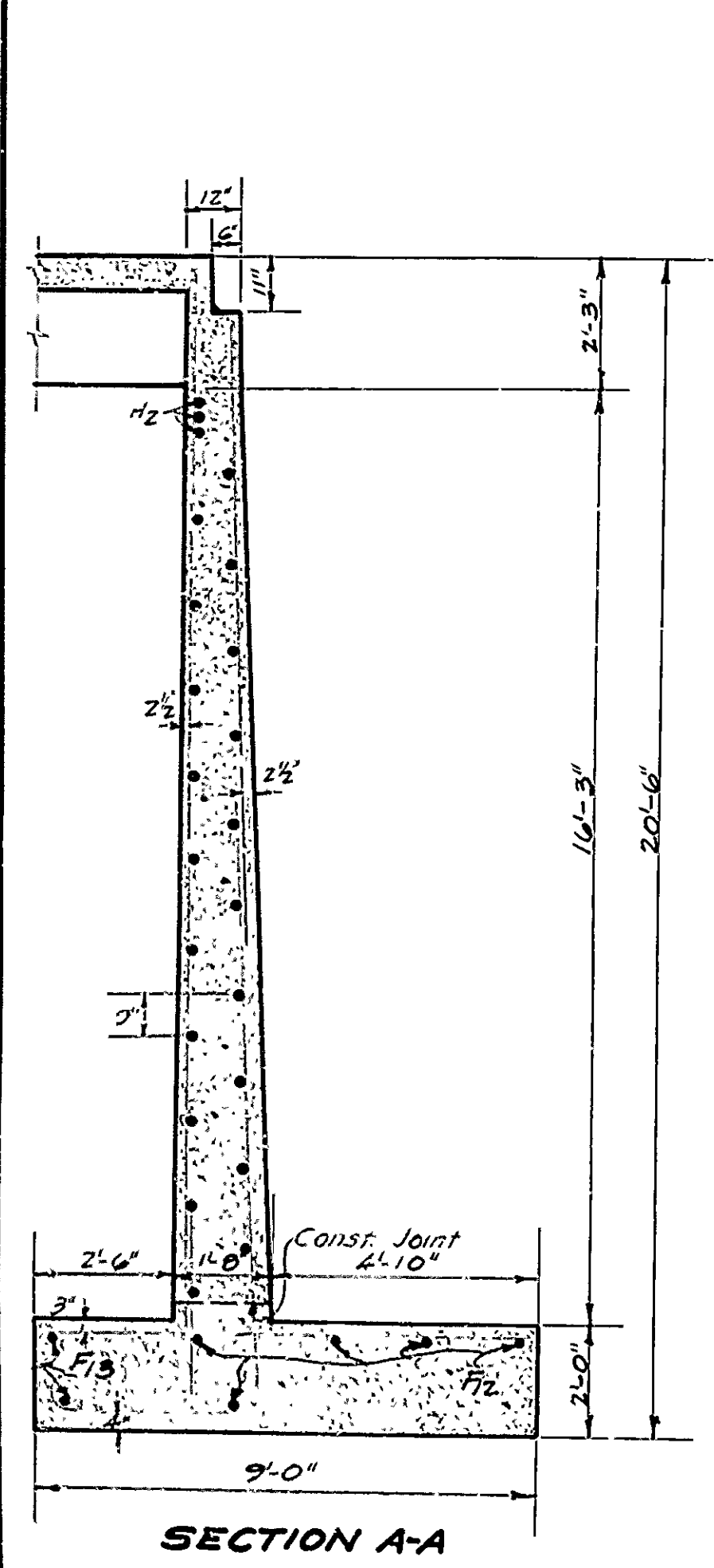
Bronze to be of Class C grade. Plates to be planed in direction of movement. 3 pair of plates required for each expansion joint.

DETAILS STANDARD
30' R.C. DECK GIRDER
 20'0\"/>

ARKANSAS STATE HIGHWAY DEPARTMENT
 LITTLE ROCK, ARK.

Drawn By: Beck Date: May 17, 22
 Traced By: Beck Date: _____
 Checked By: _____ Date: _____
 BRIDGE NO. _____ DRAWING NO. 1002

Place/Year	Job No	Sheet No	Total Sheets
1929	493	4	10
DIST. NO.	STATE	FED. AID PROJ. NO.	FISCAL YEAR
8	ARK.		
SHEET NO.			
TOTAL SHEETS			
DETAILS OF ABUTMENT NO. 2, POLK COUNTY, ARK.			



General Notes:
 All concrete to be poured in the dry.
 All exposed corners to have 3/4 inch Chamfer unless otherwise shown.
 Reinf. Steel to be deformed bars of Struct. or intermediate grade.
 Shop list & Bending diagrams of Reinf. Steel must be submitted by Contractors before fabrication is begun.
 Specifications: Arkansas Standard Road & Bridge Specifications adopted May 30, 1925 & revised.

**DETAILS OF ABUTMENT NO. 2
 BRIDGE OVER OUACHITA RIVER
 POLK, COUNTY
 ROUTE 71 SEC. 10
 ARKANSAS STATE HIGHWAY DEPARTMENT
 LITTLE ROCK, ARK.**

Drawn By: E.O.G. Date: 4/23/29
 Traced By: E.M.S. Date: 4/26/29
 Checked By: C.M.L. Date: 4-30-29

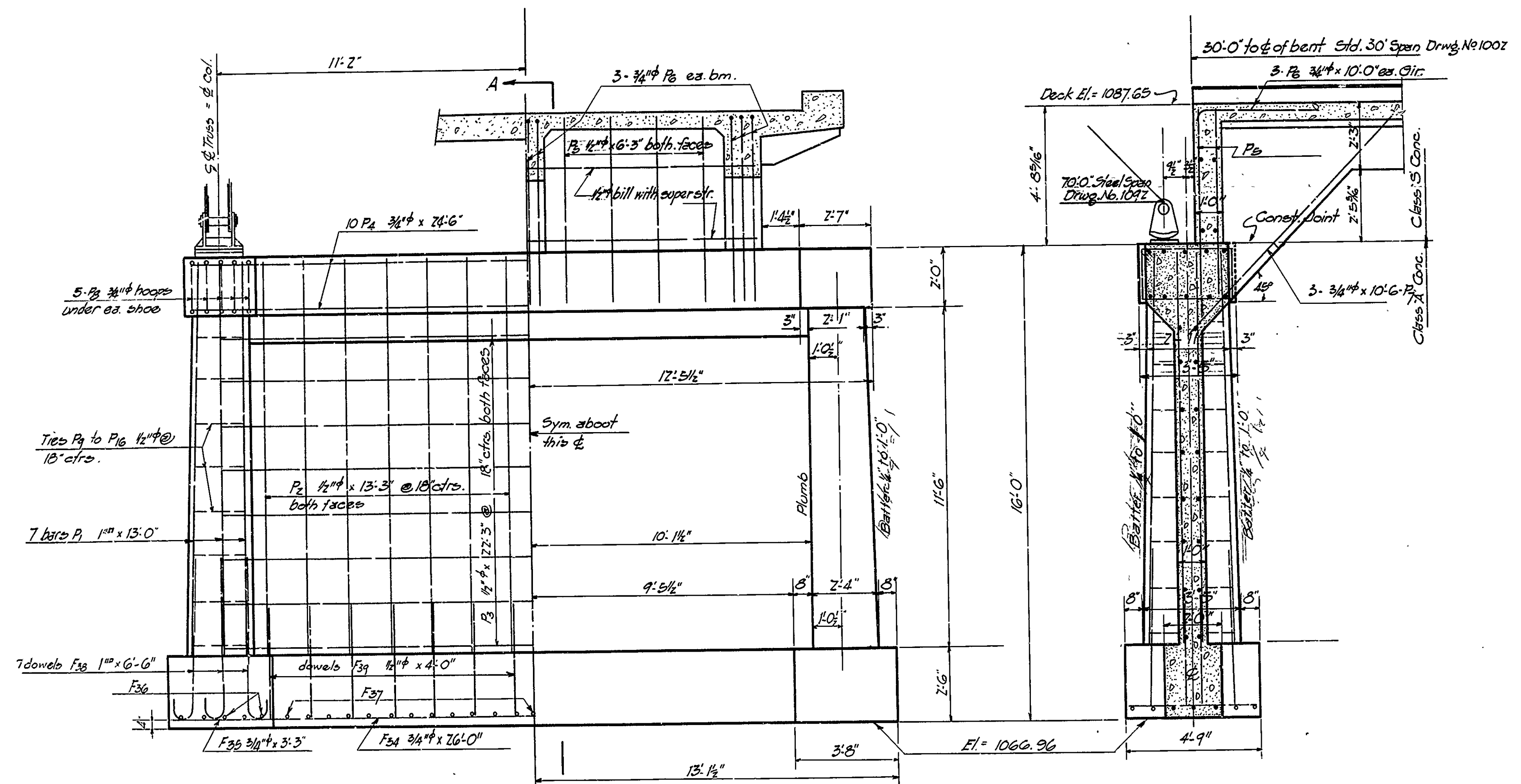
Scale: 3/8" = 1' ft.
 BRIDGE No. 1192 DRAWING No. 1561

FISCAL YEAR		Job No.	SHEET NO.	TOTAL SHEETS
1929		493	5	10

ROAD DIST. NO.	STATE	FED. AID PROJ. NO.	FISCAL YEAR	SHEET NO.	TOTAL SHEETS
3	ARK.			5	10

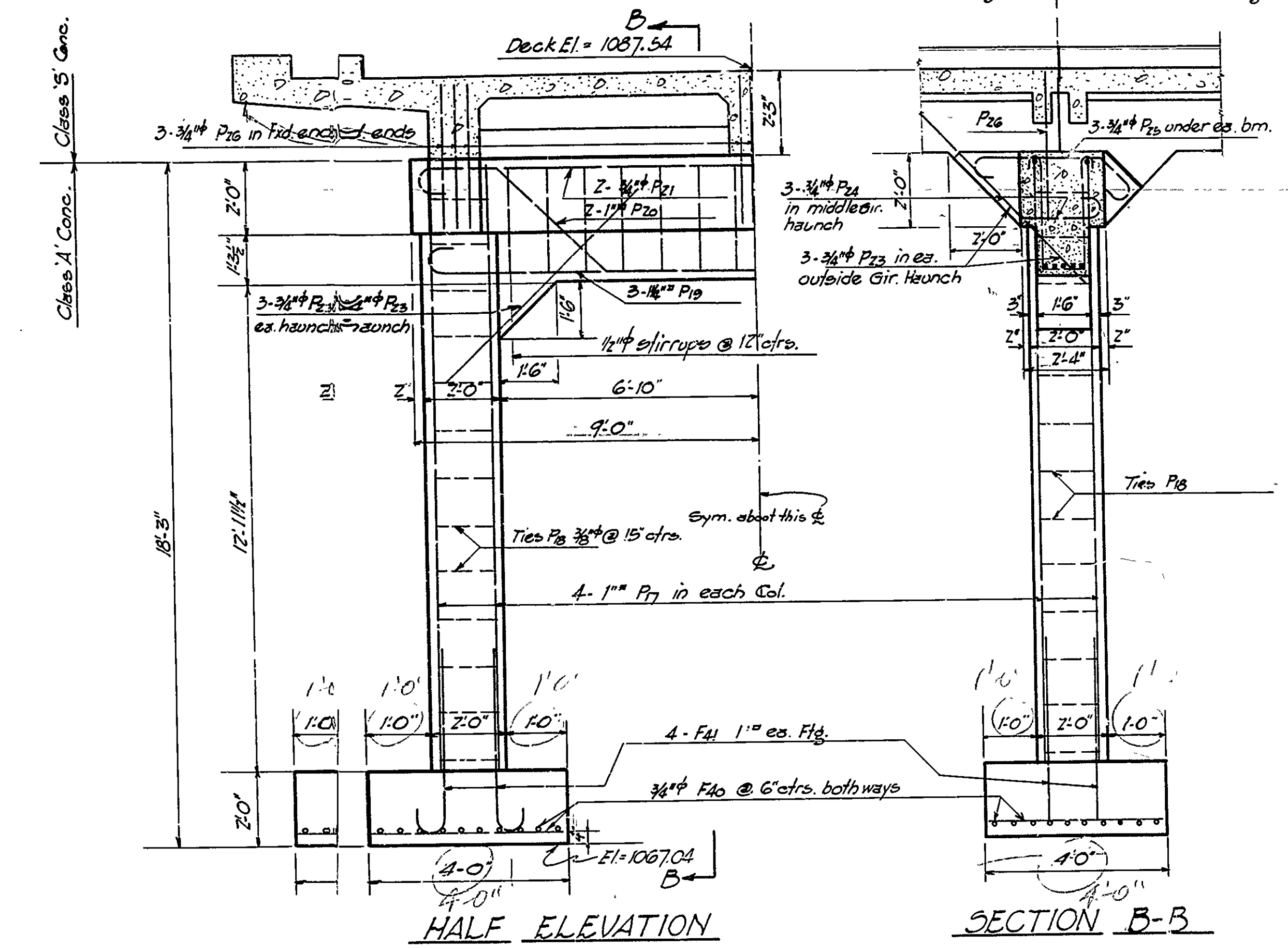
30'-3 1/2' to ϕ Pier
Std. 30' R.C.D. Gir. Drawg. 1002

30'-0" to Blk. face Abt. Wall
Std. 30' R.C.D. Gir. Drawg. 1002



ELEVATION OF PIER

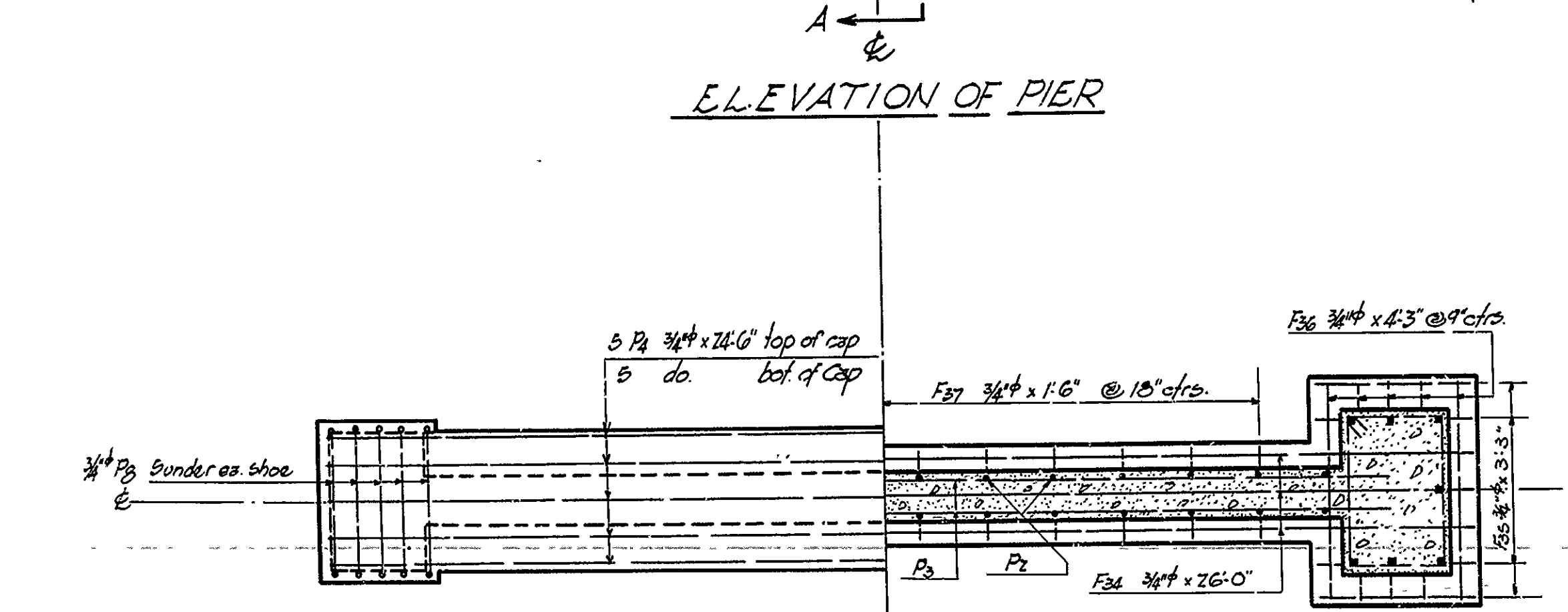
SECTION A-A



HALF ELEVATION

SECTION B-B

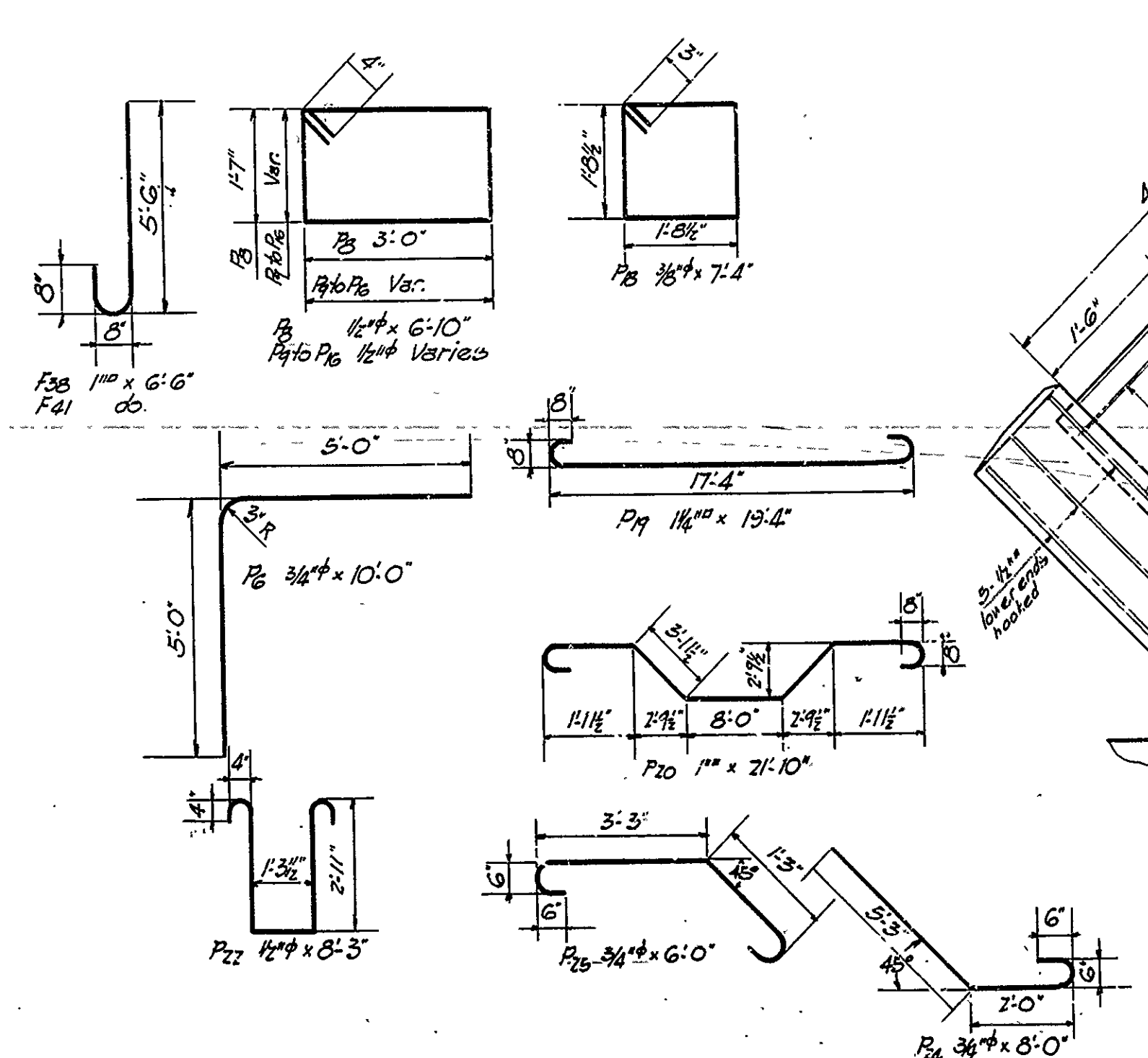
DETAILS OF BENT



PLAN OF CAP
(SUPERSTRUCTURE REMOVED)

PLAN OF FOOTING

DETAILS OF PIER



DETAILS OF TURNOUT
Scale: 1/4" = 1'-0"

DETAILS OF
PIER, INT. BENT & HANDRAIL TURNOUT
OUACHITA RIVER BRIDGE
POLK COUNTY
ROUTE 71 SEC. 10
ARKANSAS STATE HIGHWAY DEPARTMENT
LITTLE ROCK, ARK.

Drawn by: E.A.W. 4-26-29
Traced by: E.A.W. 4-30-29
Checked by: E.O.G. 4-30-29
Scale: 3/8" = 1'-0"
and as noted.
BRIDGE No. 1192
DRAWING No. 156Z

H.B. ...
Bridge Engineer