

STATE OF ARKANSAS
STATE HIGHWAY DEPARTMENT

PLAN OF PROPOSED BRIDGES
ON
HOXIE-ALICIA ROAD
LAWRENCE COUNTY

ROUTE 67 SEC. 18
JOB NO 1014

EMERGENCY FINANCIAL FEDERAL AID PROJECT No. 246-C

FISCAL YEAR	JOB NO.	SHEET NO.	TOTAL SHEETS
1929	1014	1	10

FED. AID DIST. NO.	STATE	F.F.A. PROJ. NO.	SHEET NO.	TOTAL SHEETS
	ARK.	246-C	1	10

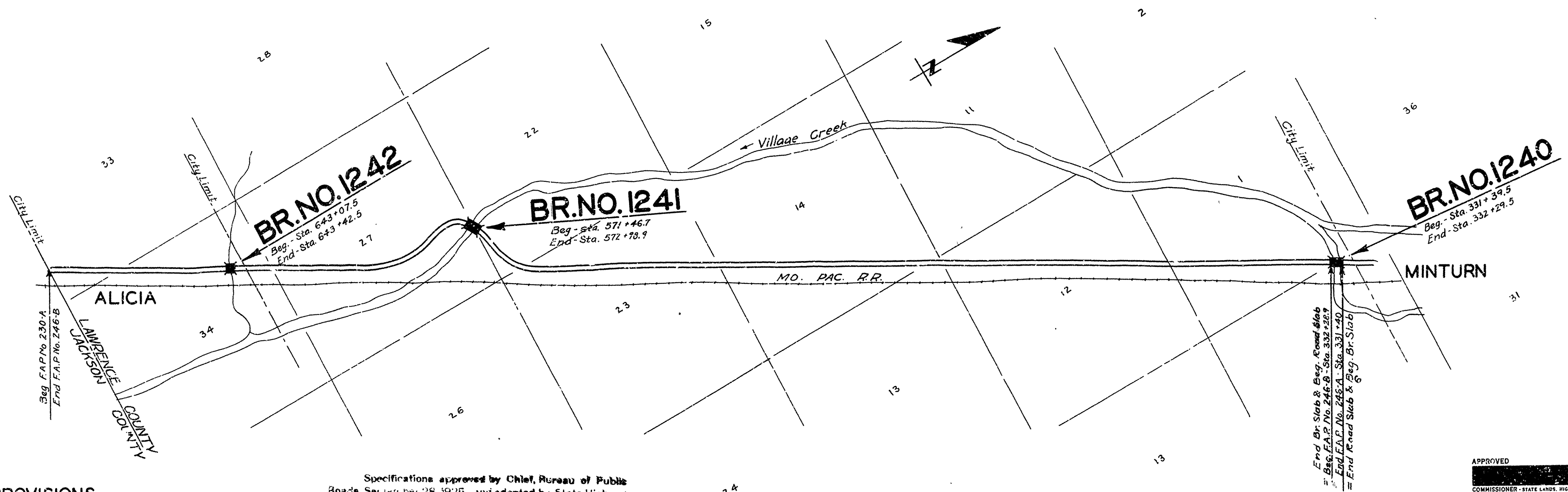
INDEX OF SHEETS

Sheet No.	Dwg. No.	Year	Title
1	1931	1931	Title Sheet
2	1932	1932	Layout of Br. No 1240
3	1933	1933	Details of Substructure Br No 1240
4	1002	1933	Details of Std 30' R.C.D. Girder
5	1934	1934	Layout of Br. No 1241
6	1935	1935	Details of Substructure, Br No 1241
7	1093	1935	Std Plan- 80' Low Truss Span
8	1936	1936	Layout of Br. No. 1242
9	1937	1937	Details of Abutments-Br. No 1242
10	1003	1937	Details of Std 35' R.C.D. Girder

QUANTITIES

Item	Description	Quantity
13	Earth Excavation	802 Cu. Yds
13	Dry Excavation for Structures	161 " "
13	Wet Excavation for Structures	852 " "
*	175R Borrow	3154 " "
54	Class "A" Concrete	306.99 " "
54	Class "S" Concrete	243.19 " "
54.5P	Seal Concrete	89.45 " "
55	Reinforcing Steel	91,054 Lbs.
56	Structural Steel (Trusses)	63,000 " "
66	Untreated Timber Piling	3,320 Lin Ft
69SP	Rip Rap (1' Thick)	240 Cu Yds.
74	Concrete Railing for Structs.	433 Lin Ft.

Note: Bridge Contractor to remove Existing structures within Bridge Exceptions
* These items non-participating in Federal Aid



SPECIAL PROVISIONS

ITEM	NO. SHEETS
Work Order - Not prior to Jan 1, 1930	1
Notice in opening borrow pits	1
Filling of stump holes	1
Rip Rap	1
Seal Concrete	2

Specifications approved by Chief, Bureau of Public Roads Section per 28, 1925, and adopted by State Highway Commission May 30, 1925, with revisions and Special Provisions as follows:

Pamphlet	Revised	Sept. 1, 1928	Approved June 1, 1929
A			
B			
C			
D	July 1, 1928		Nov. 24, 1928
E			
F			
G			
H			
I	May 30, 1925		May 30, 1925
J	Jan. 1, 1929		June 1, 1929
K	May 30, 1925		May 30, 1925
L	Jan. 1, 1929		June 1, 1929

LAYOUT

Scale: 1"=1500'
JOB NO. 1014
GROSS LENGTH OF PROJECT = 540'-0" = .102 Mi.
NET LENGTH OF PROJECT " " "
E.F.F.A. PROJ. NO. 246-C
GROSS LENGTH OF PROJECT = 277'-2" = .052 Mi.
NET LENGTH OF PROJECT " " "

F.A.P. No. 5-21-31 BHK
Sta. Nos.

M.R. Leaver
BRIDGE ENGINEER

APPROVED
COMMISSIONER - STATE LANDS, HIGHWAYS AND IMPROVEMENTS

APPROVED
STATE HIGHWAY ENGINEER

RECOMMENDED FOR APPROVAL
DISTRICT ENGINEER - U. S. BUREAU OF PUBLIC ROADS

RECOMMENDED FOR APPROVAL
CHIEF ENGINEER - U. S. BUREAU OF PUBLIC ROADS

APPROVED
DIRECTOR - U. S. BUREAU OF PUBLIC ROADS

BRIDGE No. 1240, 1241 & 1242
DRAWING No. 1931

FISCAL YEAR	Job No.	SHEET NO.	TOTAL SHEETS
1929	1014	5	10

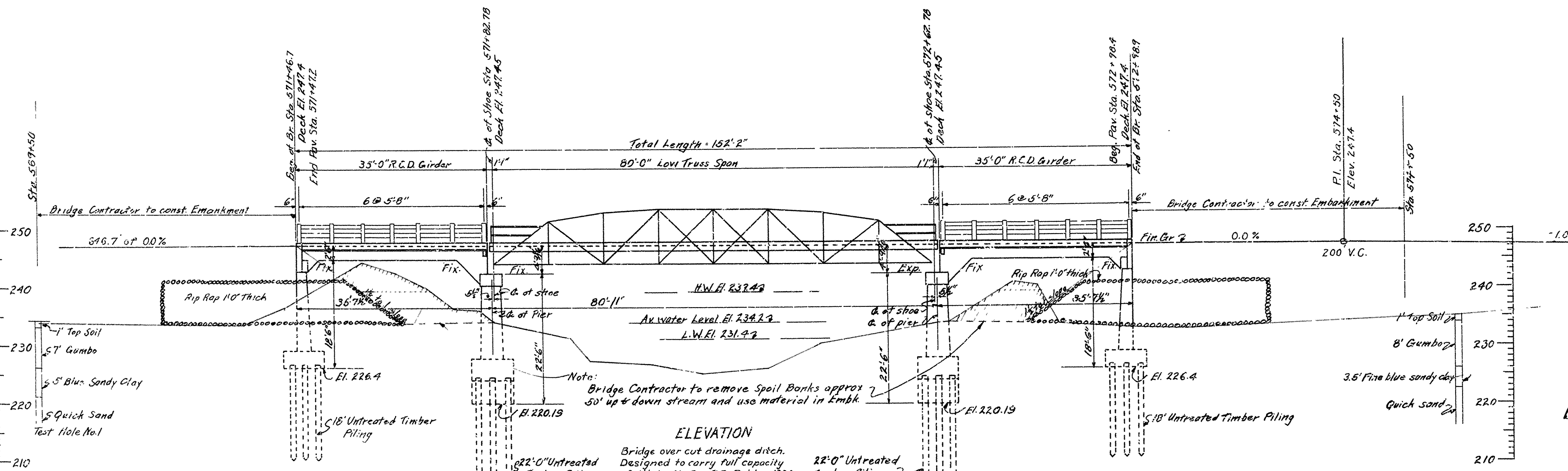
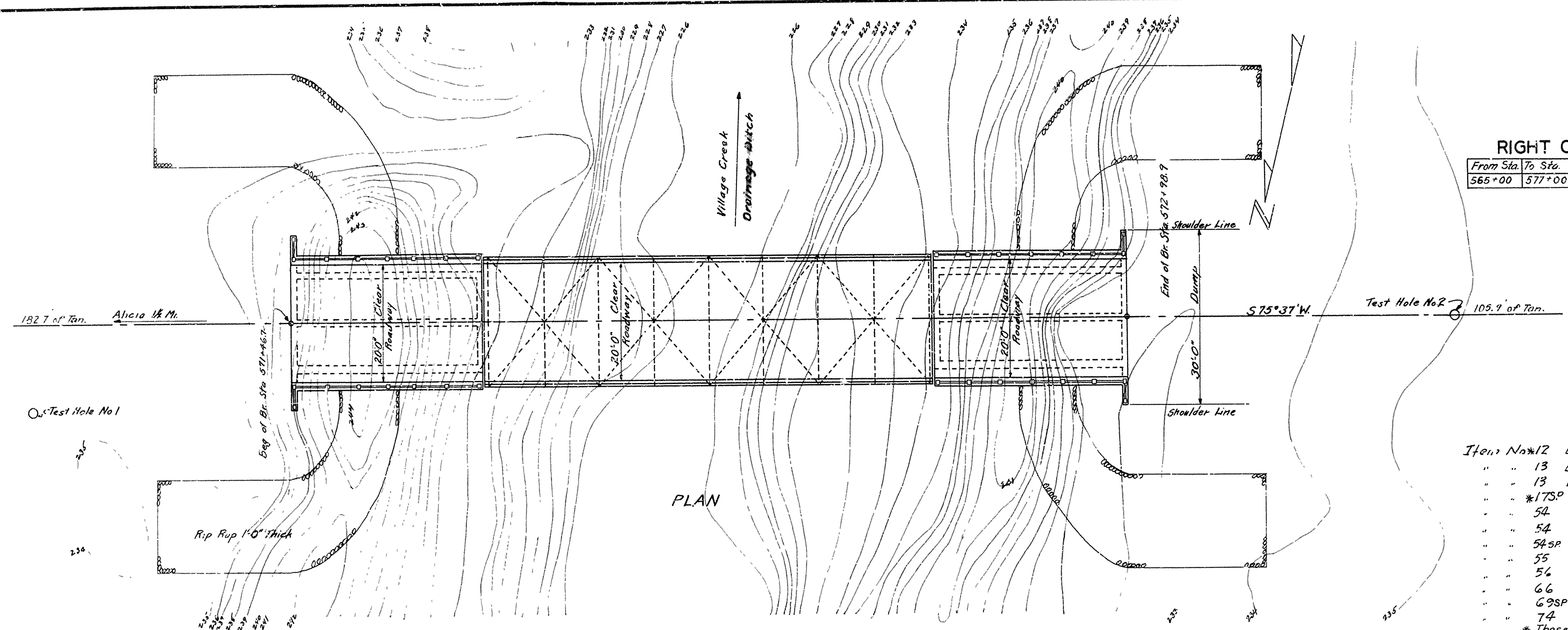
RIGHT OF WAY

From Sta.	To Sta.	Rt.	Lt.	Total
565+00	577+00	80'	80'	160'

QUANTITIES

Item No.	Description	Quantity
12	Earth Excavation	802 Cu.Yds
13	Dry Excavation for Structs	37 " "
13	Wet Excavation for Structs	455 " "
*1750	Borrow	2189 " "
54	Class "A" Concrete	162.02 " "
54	Class "S" Concrete	129.02 " "
54SP	Seal Concrete	57.9 " "
55	Reinforcing Steel	44,283 Lbs
56	Structural Steel (Trusses)	63,000 " "
66	Untreated Timber Piling	1664 Lin Ft
69SP	Rip Rap (1" thick)	155 Cu.Yds
74	Concrete Railing for Structs	153 Lin Ft

* These items non-participating in Federal Aid



For Details of 35'-0" R.C.D. Girder Spars See Dwg. No. 1003
 " " " 80'-0" Low Truss Span " " " 1093
 " " " Substructure See Dwg. No. 1935

Lengths of Piling shown are assumed for Estimating Quantities only. Actual lengths to be determined in the field. Volume occupied by embedded pile heads not included in piling quantities. Concrete in footing. Bearing cap. 15 T.

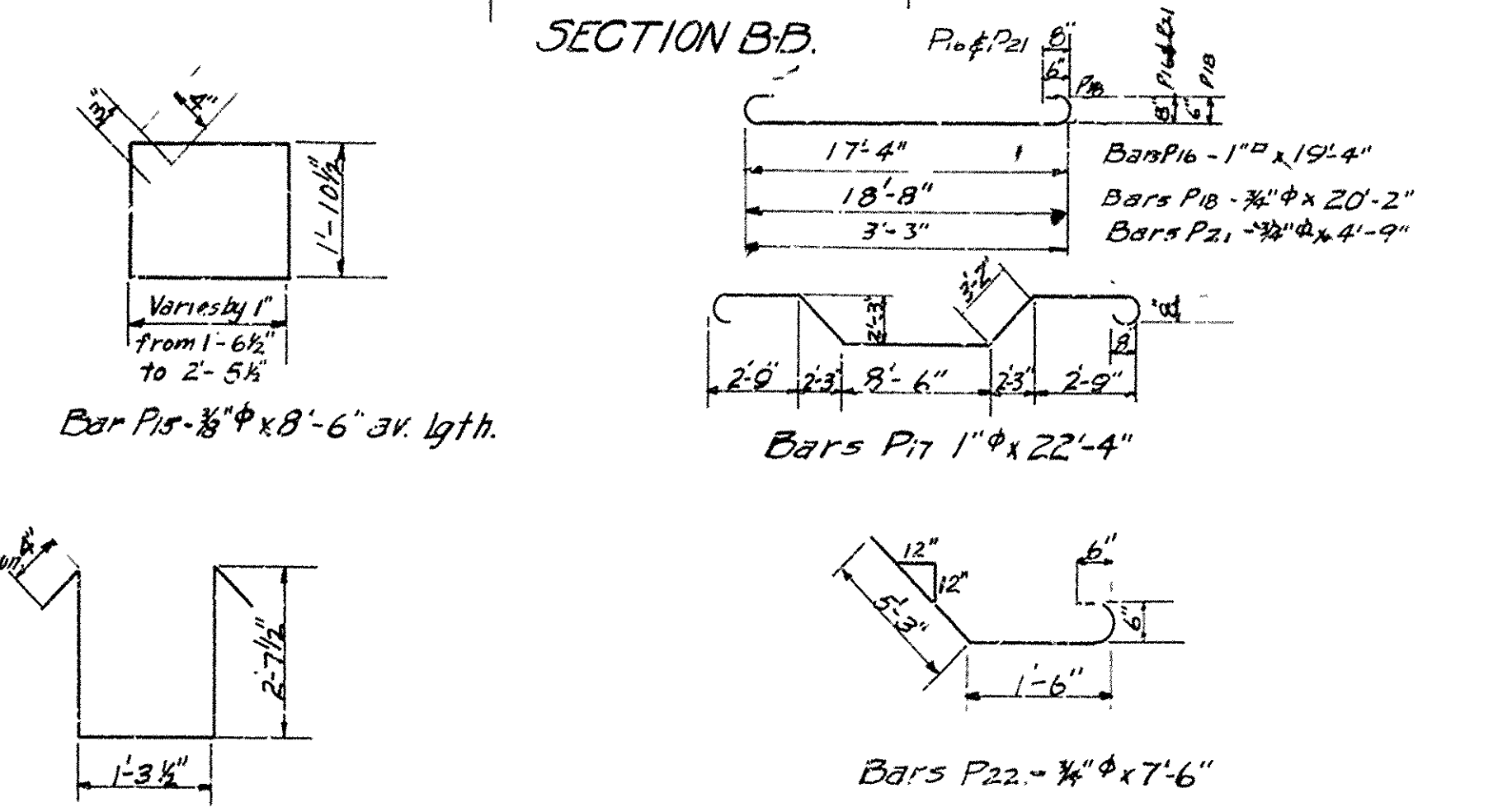
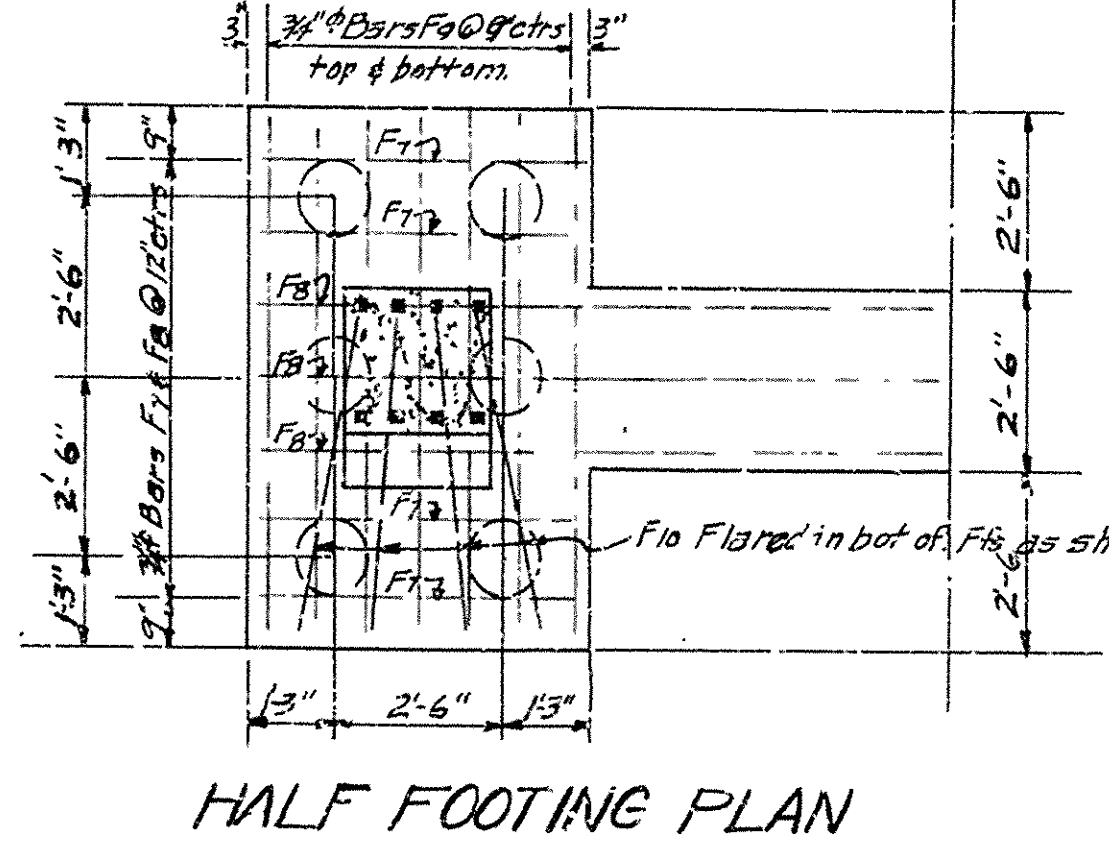
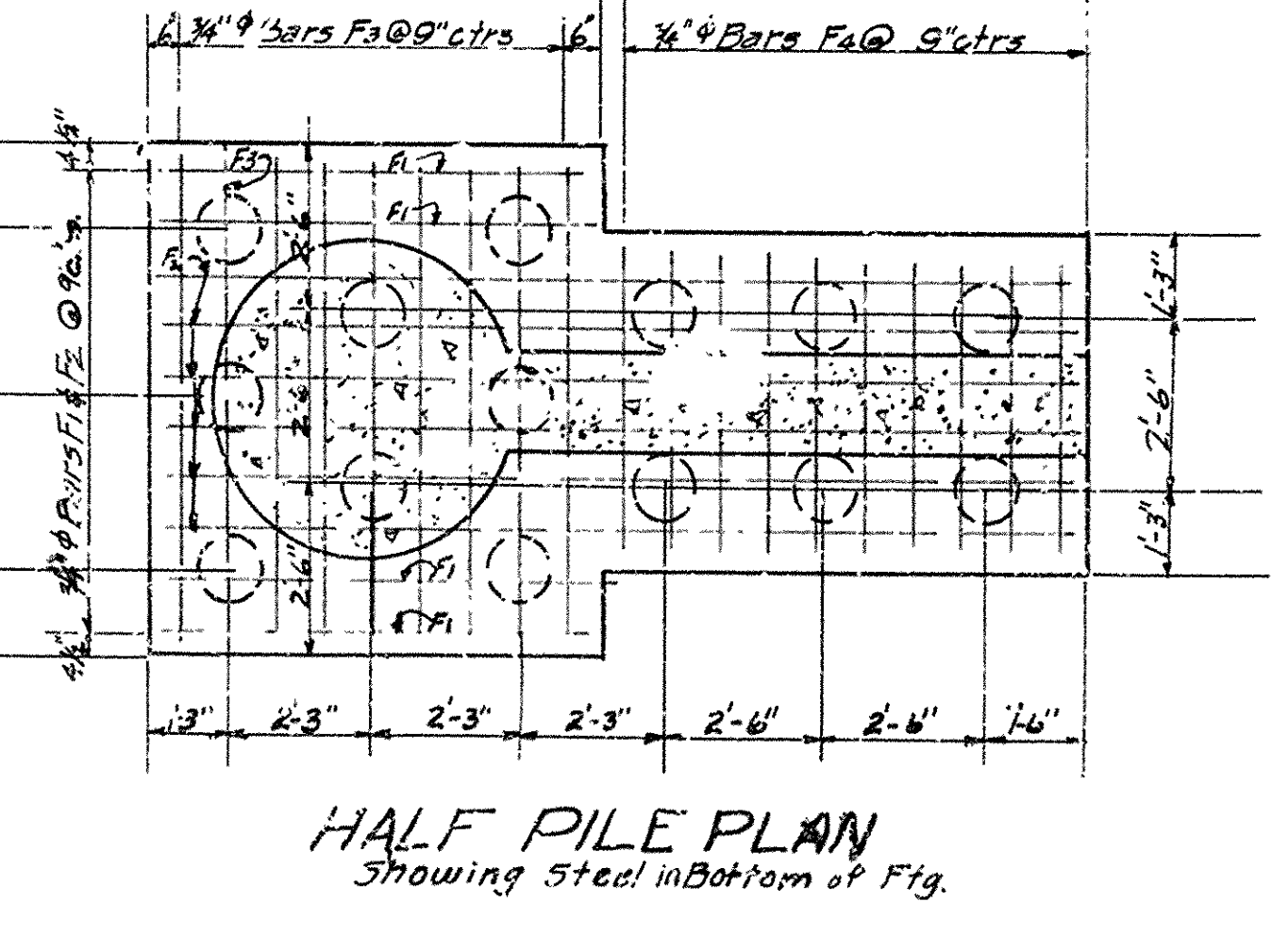
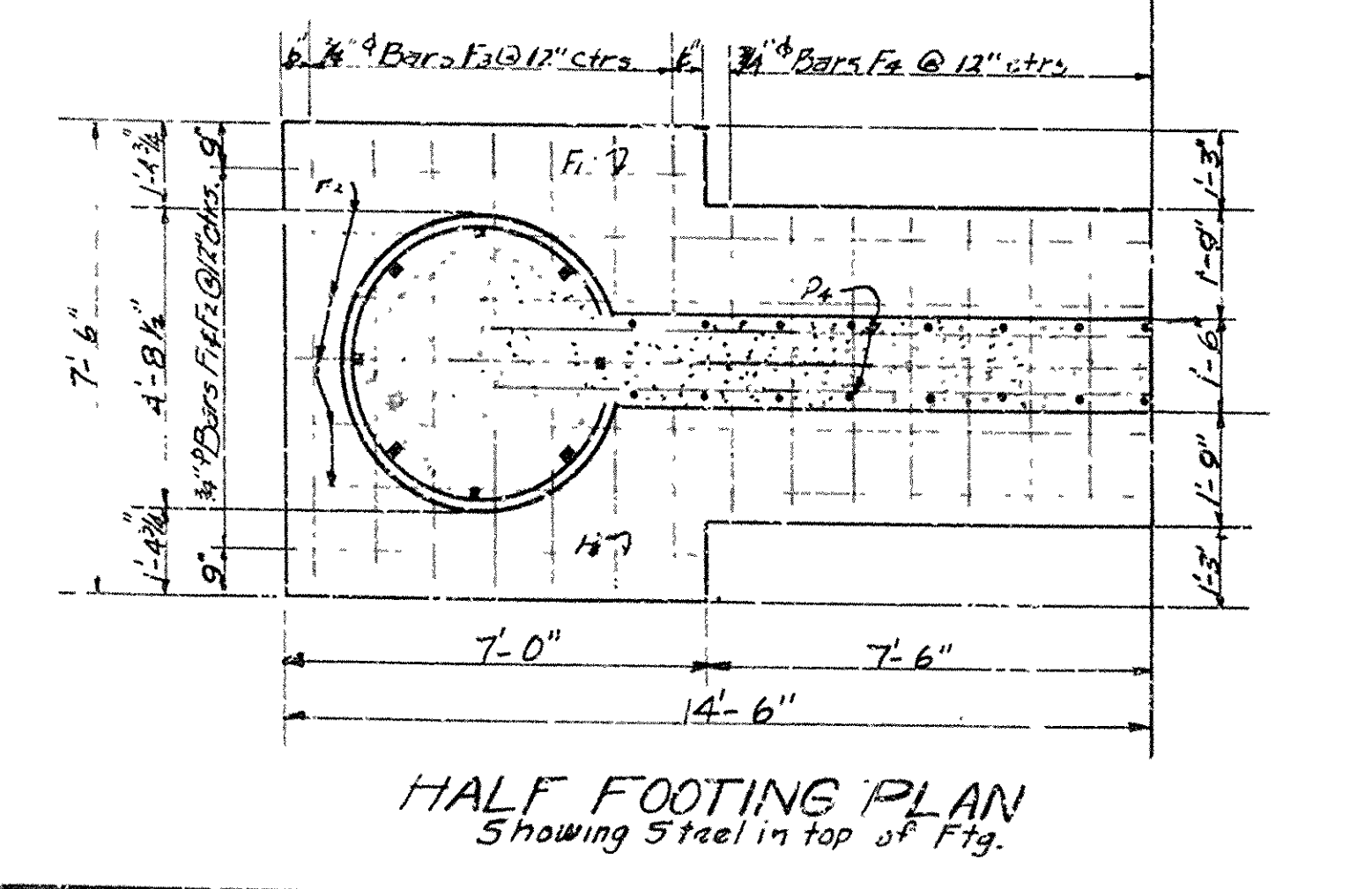
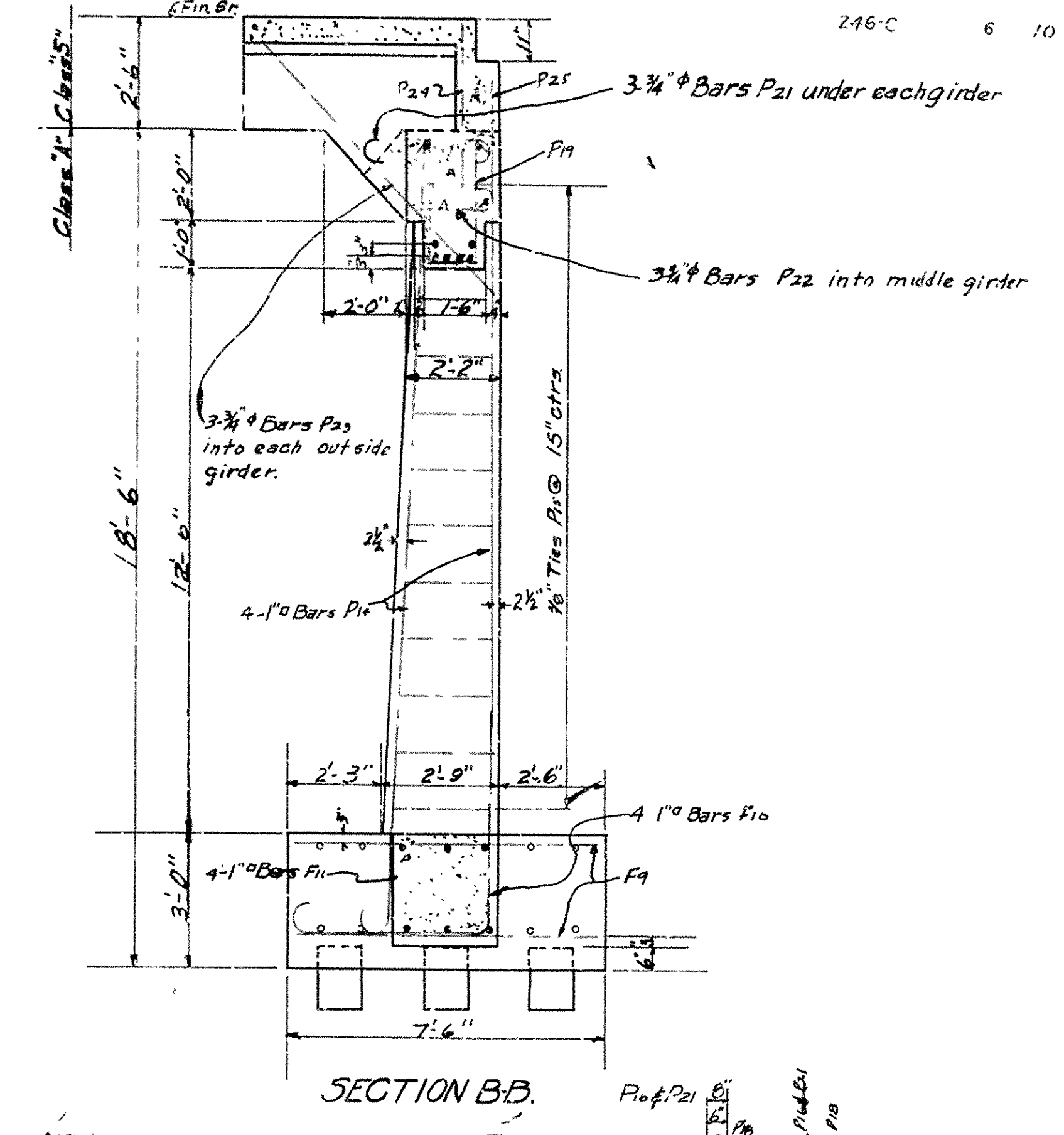
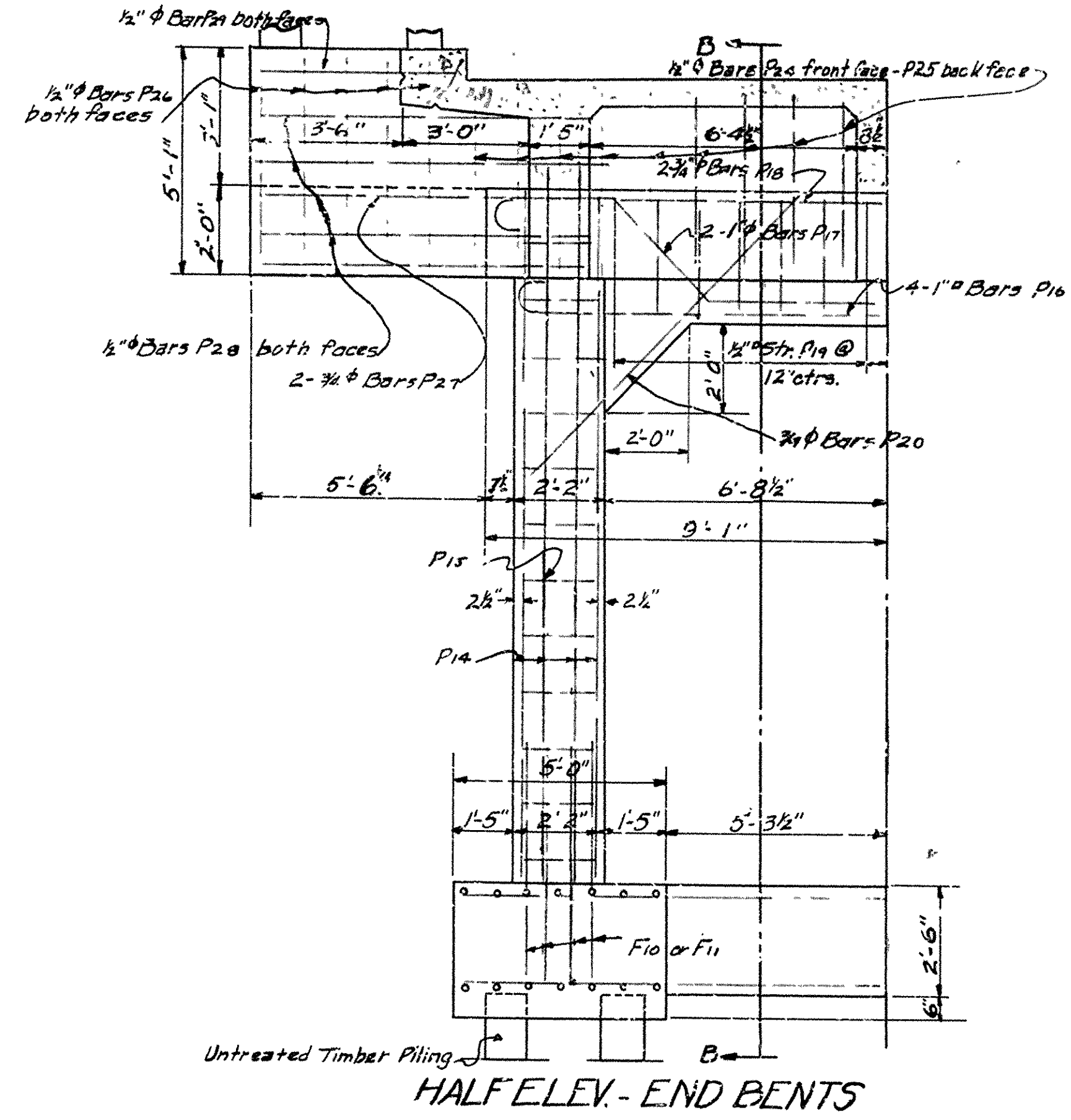
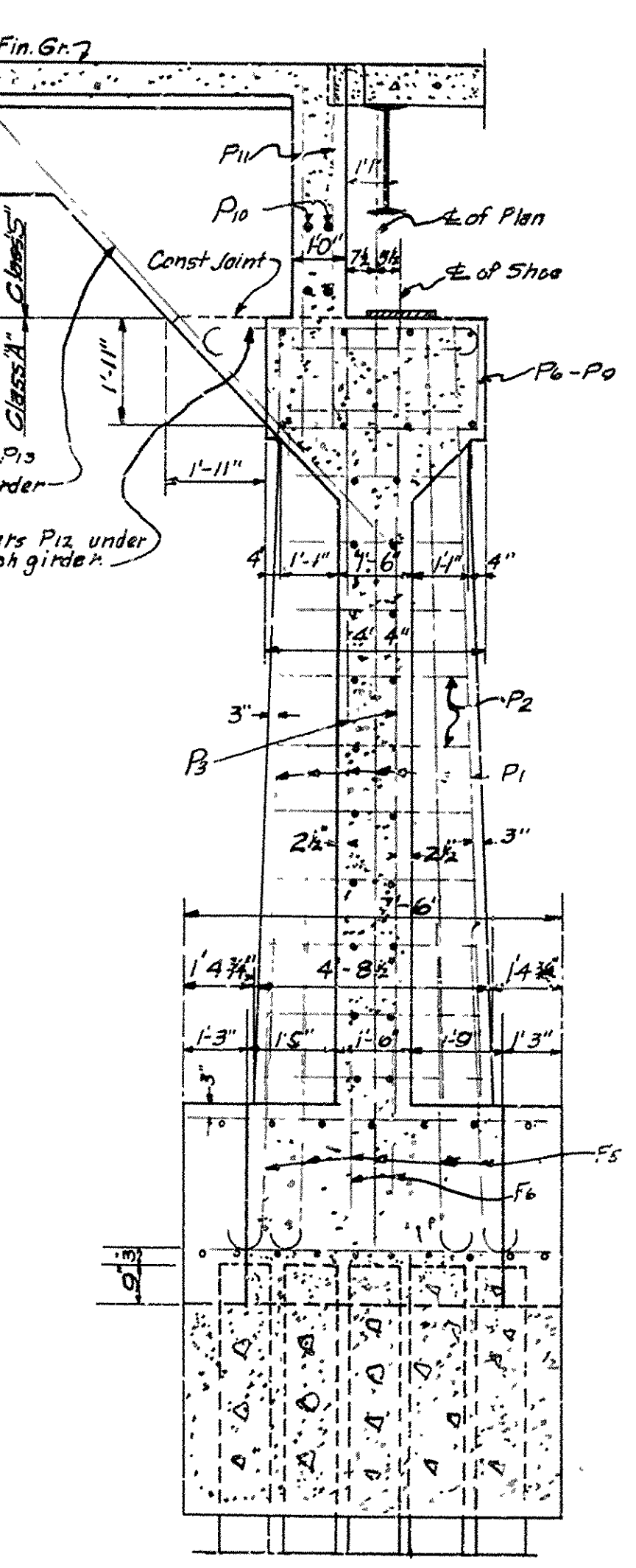
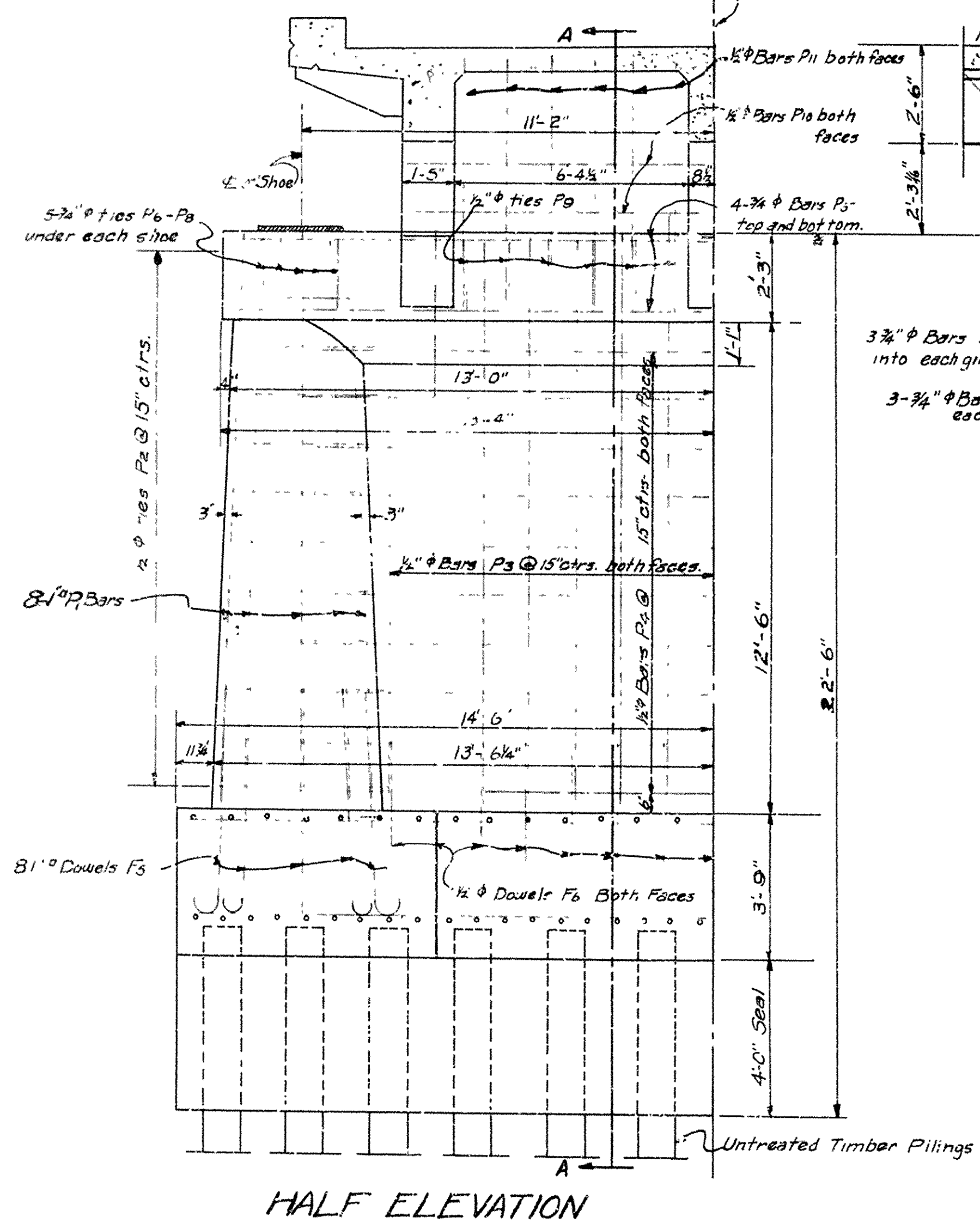
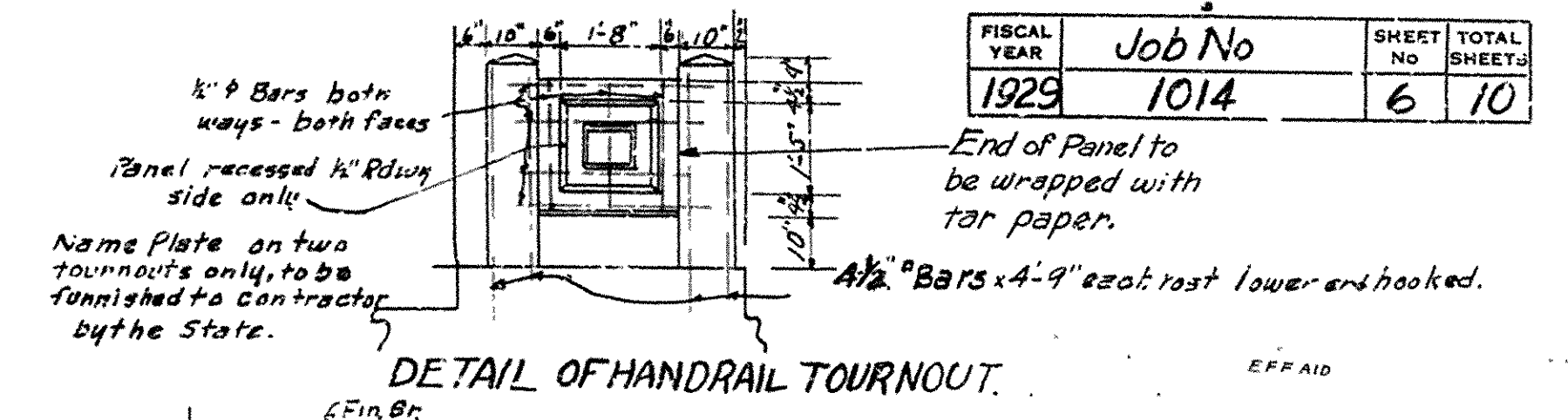
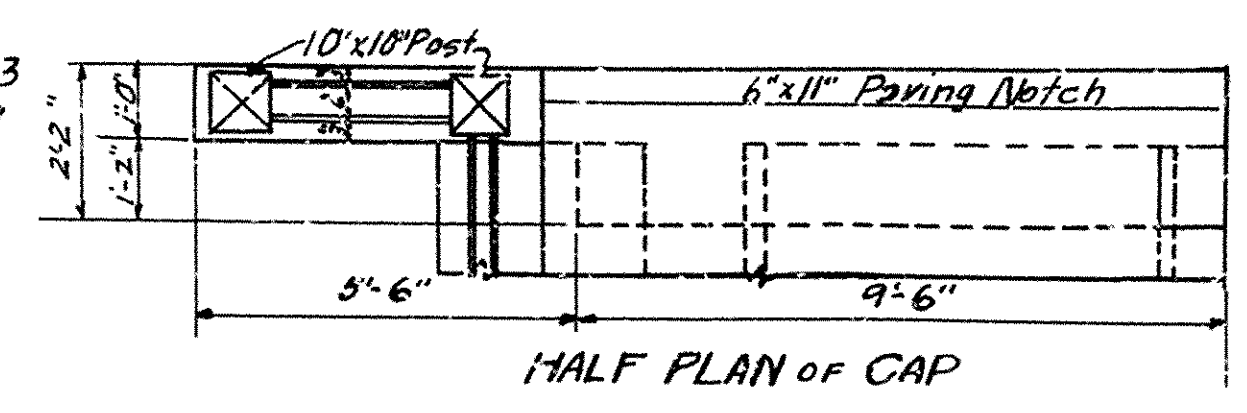
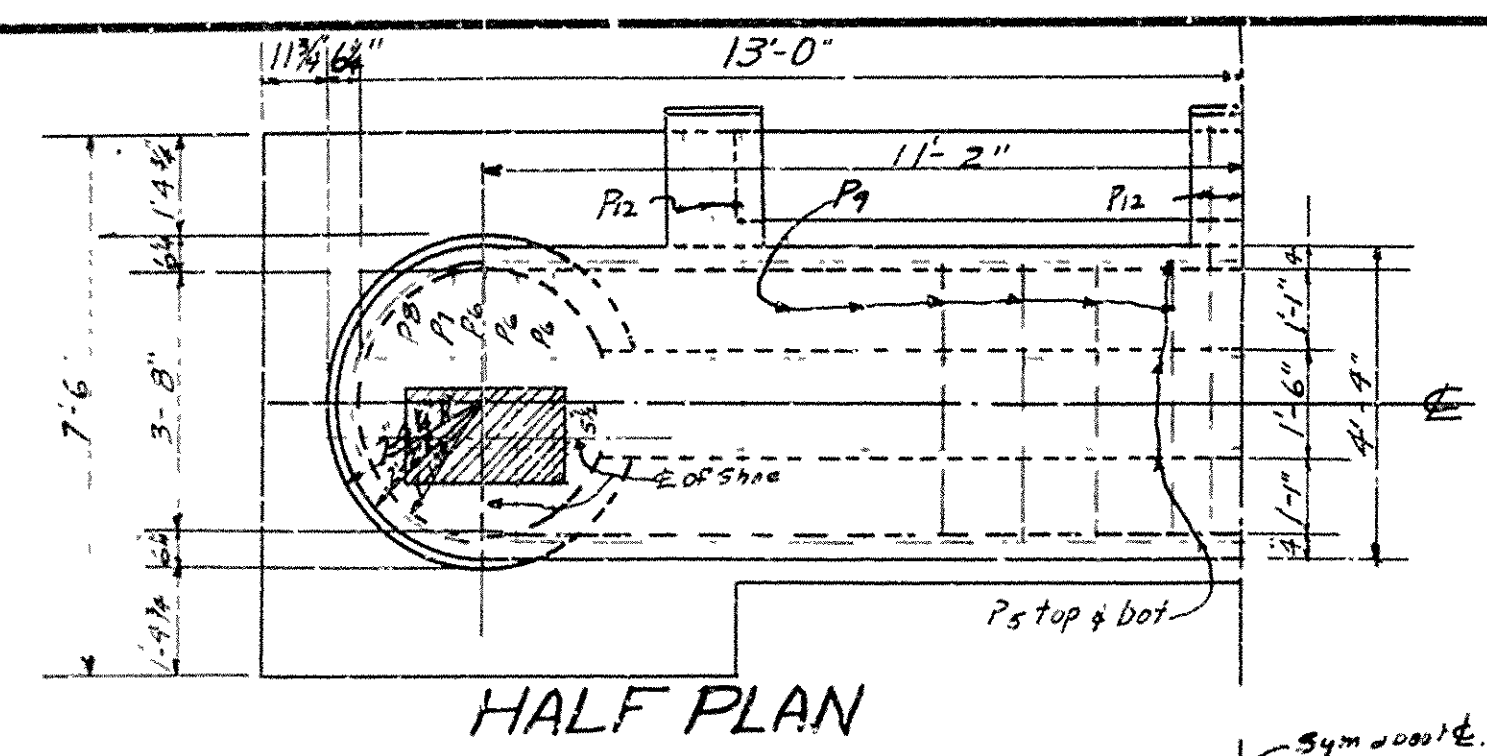
B.M. #54'B" El. 239.19
 Nail in 22" Twin Oak
 115' At Sta. 573+90

LAYOUT
BRIDGE OVER VILLAGE CREEK
 HOXIE-ALICIA RD.
 LAWRENCE CO.
 ROUTE 67 SEC. 18
ARKANSAS STATE HIGHWAY DEPARTMENT
 LITTLE ROCK, ARK.

Drawn By: *Buckner* Date: 11/18/28
 Traced By: *Quinton* Date: 12/29/28
 Checked By: *A.L.G.* Date: 1/21/29
 BRIDGE NO. 1241
 Scale: 1 in. = 10 ft.
DRAWING NO. 1934

For Details of 35' R.C.D. Girder Span See Drawg. 1003
For Details of 80' Low Truss Span See Drawg. No. 1093

FISCAL YEAR	Job No	SHEET No	TOTAL SHEETS
1929	1014	6	10



Bars on this Sheet - F1 to F11 incl P1-P29 incl

DETAILS OF SUBSTRUCTURE FOR BRIDGE OVER VILLAGE CREEK HOXIE-ALICIA ROAD LAWRENCE CO. ROUTE 67 SEC 18

ARKANSAS STATE HIGHWAY DEPARTMENT
LITTLE ROCK, ARK.

Drawn By: *[Signature]* Date: 11-2-29
Traced By: *[Signature]* Date: 11-2-29
Checked By: *[Signature]* Date: 11/21/29

BRIDGE NO. 1241 DRAWING NO. 1935

Scale: 3/8" = 1 ft.

[Signature]
BRIDGE ENGINEER