

FISCAL YEAR	Job No.	SHEET NO.	TOTAL SHEETS
1929	10-135	7	77

255-F 1 5

QUANTITIES JOB NO 10-135

Item No.	Description	Quantity
12	Earth Excavation	1692 Cu. Yds.
13	Dry Excavation for Structs.	200 "
13	Wet Excavation for Structs.	1081 "
17	Borrow	2185 "
54	Class "A" Concrete	357.91 "
54	Class "S" Concrete	1003.08 "
54 SP	Seal Concrete	168.99 "
55	Reinforcing Steel	264,295 Lbs
56	Structural Steel (Trusses)	115,328 "
SP52	Untreated Timber Piling	3324 Lin Ft.
SP68	Precast Concrete Piling	2928 "
SP69	Rip Rap	265 Cu. Yds
74	Concrete Railing for Structs	1811 Lin Ft.

* Non Participating in Federal Aid

QUANTITIES PROJ. NO. 255-F BRIDGES 1283 & 1284

Item No.	Description	Quantity
12	Earth Excavation	110 Cu. Yds.
13	Dry Excavation for Structs	180 "
13	Wet " " "	333 "
54	Class "A" Concrete	13721 "
54	Class "S" " "	5960 "
55	Reinforcing Steel	23,940 Lbs.
SP52	Untreated Timber Piling	1620 Lin Ft.
74	Concrete Railing for Structs	158 "

STATE OF ARKANSAS STATE HIGHWAY COMMISSION

PLAN OF PROPOSED BRIDGES ON HOXIE - JONESBORO ROAD

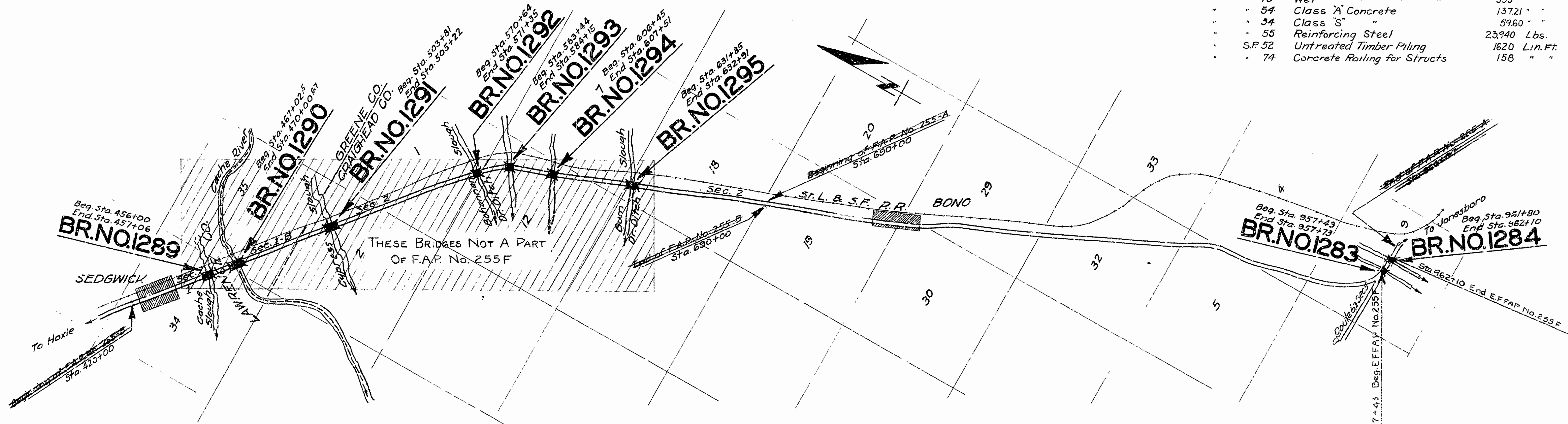
LAWRENCE - GREENE & CRAIGHEAD COUNTIES

ROUTE 63 SEC. 5 JOB NO 10-135

FEDERAL AID PROJ. NO. 255-F EMERGENCY FINANCIAL FEDERAL AID PROJ. NO. 255-F

INDEX OF SHEETS

Sheet No.	Description
1	Dwg. No. 1969 Title Sheet
2	1972 Layout Sheet Br. No. 1289
3	1933 Sid. 35' R.C.D. Girder 30' Skew L.
4	1974 Layout Sheet Br. No. 1290
5	1972 Details of Piers Br. No. 1289
6	1933 Sid. 120' O' Steel Truss Span
7	1973 Layout Sheet Br. No. 1291
8	1974 Layout Sheet Br. No. 1292
9	1975 Layout Sheet Br. No. 1293
10	1976 Details 35' R.C.D. Girder 2' 03" Curve
11	1977 Layout Sheet Br. No. 1294
12	1978 Layout Sheet Br. No. 1295
13	1979 Sid. 35' R.C.D. Girder on Abut. Bents 26' 20"
14	1979 Layout Sheet Br. No. 1283 & 1284
15	1980 Details of Abutments Br. No. 1283
16	1981 Details of Abutments Br. No. 1284
17	1982 Details of Superstructure Br. Nos. 1283 & 1284



Specifications approved by Chief, Bureau of Public Roads, Sept 28, 1925, and adopted by State Highway Commission May 30, 1925, with Revisions and Special Provisions as follows:

Pamphlet A	Revised Sept. 1st, 1928	Approved June 1, 1929
B	Nov. 1st, 1929	
C		
D	Revised July 1st, 1928	Nov. 24, 1928
E	Jan. 1st, 1930	
F	Aug. 1st, 1929	
G	June 1st, 1929	
H	Jan. 1st, 1930	
I		
J	Revised Jan. 1st, 1929	June 1, 1929
K		
L	Revised Jan. 1st, 1925	June 1, 1929

SPECIAL PROVISIONS

Item	No. of Sheets
Borrow	2
Concrete Piling	2
Seal Concrete	2
Rip Rap	1
Work Order	1
Untr. Timber Piling	12

LAYOUT (SCALE 1"=2000')

GROSS LENGTH OF PROJECT - 467'-00" = 0.888 MI.

NET LENGTH OF PROJECT - 60'-00" = 0.111 MI.

LENGTH OF BRIDGES - 60'-00"

M.B. K...
BRIDGE ENGINEER

BRIDGES NO. 1283 & 1284 DRAWING NO. 1969

APPROVED [Signature] CHIEF ENGINEER - U.S. BUREAU PUBLIC ROADS

APPROVED [Signature] DIST. ENGINEER - U.S. BUREAU PUBLIC ROADS

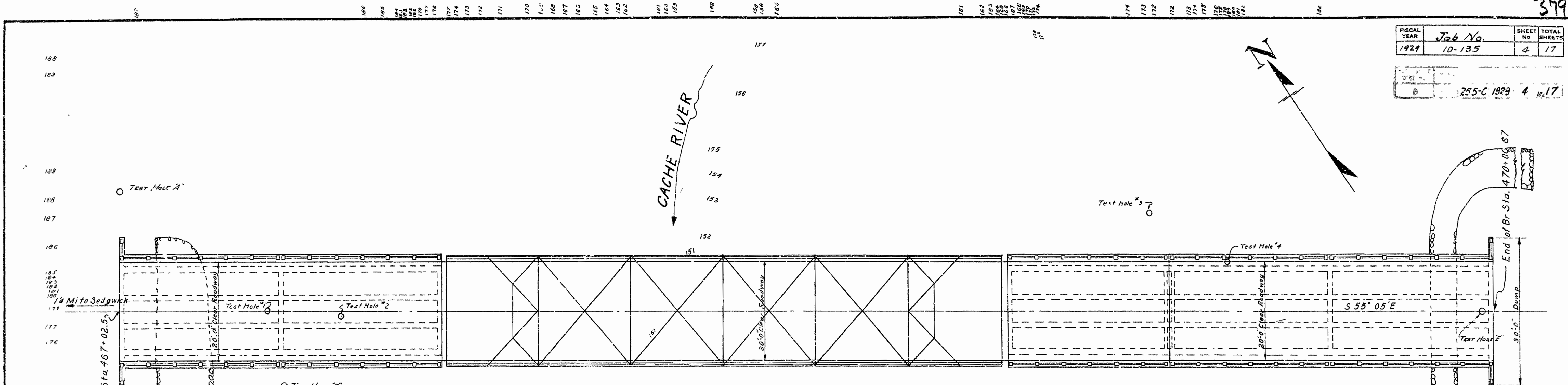
APPROVED [Signature] DIRECTOR - U.S. BUREAU OF PUBLIC ROADS

APPROVED [Signature] CHAIRMAN STATE HIGHWAY COMMISSION

APPROVED [Signature] STATE HIGHWAY ENGINEER

FISCAL YEAR	Job No.	SHEET NO.	TOTAL SHEETS
1929	10-135	4	17

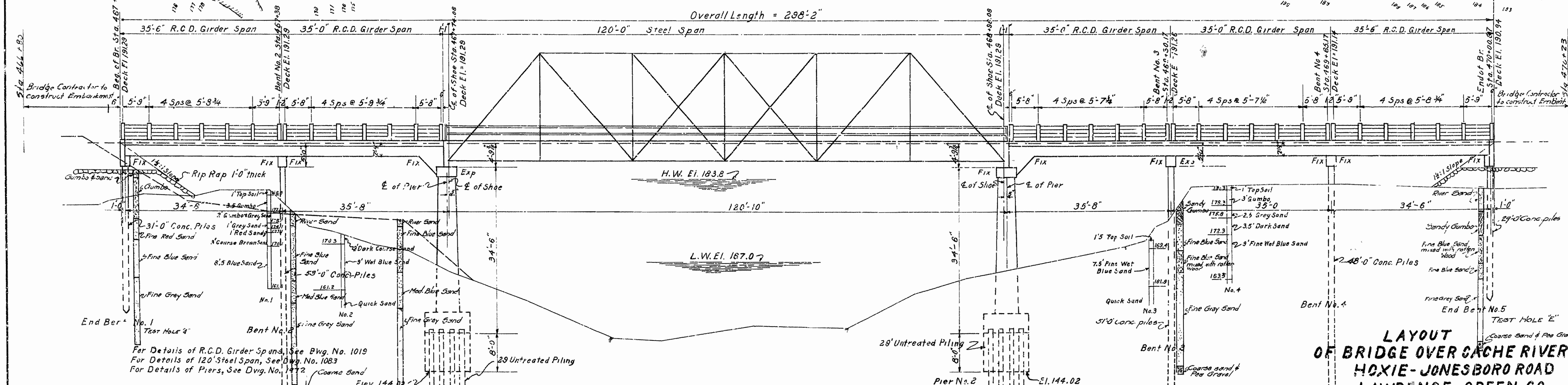
255-C	1929	4	17
-------	------	---	----



PLAN

QUANTITIES

Item No.	Description	Quantity
13	Wet Excav. for Struts	698 CuYds
17	Borrow	960 "
54	Class "A" Concrete	220.70 "
54	Class "B" Concrete	256.52 "
54	SR Seal Concrete	168.99 "
55	Reinforcing Steel	71,633 Lbs
56	Structural Steel (trusses)	115,328 "
58	SP32 Untreated Timber Piling	2204 Lin.Ft.
68	Precast Concrete Piling	628 "
69	Rip Rap	75 CuYds
74	Concrete Railing for Struts	366 Lin.Ft.



ELEVATION

For Details of R.C.D. Girder Spans, See Bwg. No. 1019
 For Details of 120' Steel Span, See Bwg. No. 1083
 For Details of Piers, See Dwg. No. 1472

Length of Piling shown are assumed for Estimating Quantities only. Actual Lengths to be determined in the field. Piling in bents 2, 3, 4 to be driven to penetration shown. Volume occupied by embedded Pile heads not included in pay Quantities of concrete in Footings.

LAYOUT OF BRIDGE OVER CACHE RIVER
HOXIE-JONESBORO ROAD
LAWRENCE-GREEN CO.
 ROUTE 81 - SEC. 1 & 2

ARKANSAS STATE HIGHWAY DEPARTMENT
 LITTLE ROCK, ARK.
 Drawn By: *Bastian* Date: 10-20-29
 Traced By: *Clark* Date: 12-31-29
 Checked By: *W.D.* Date: 1-2-30
BRIDGE NO. 1290 **DRAWING NO. 1971**

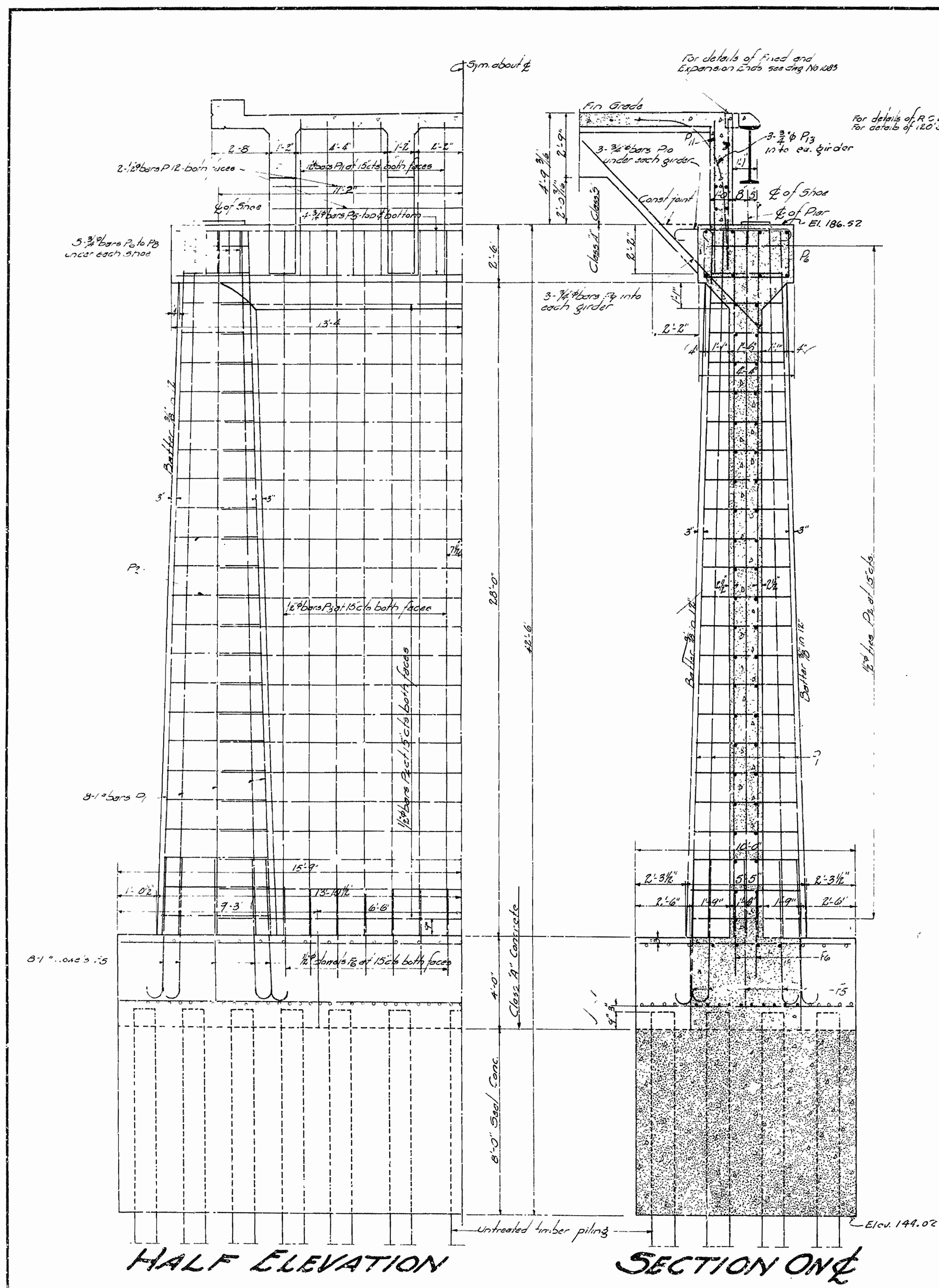
N.B. Lanier
 BRIDGE ENGINEER

Flat 50% Cult. 50% Wooded
 B.M. #47, El. 185.00
 Nail in telegraph pole 57' Lt. of & on west bank of River.

Revised 10-30 Pile lengths and New soundings by W.D. 5-5-30 Length of piling 0-3-30

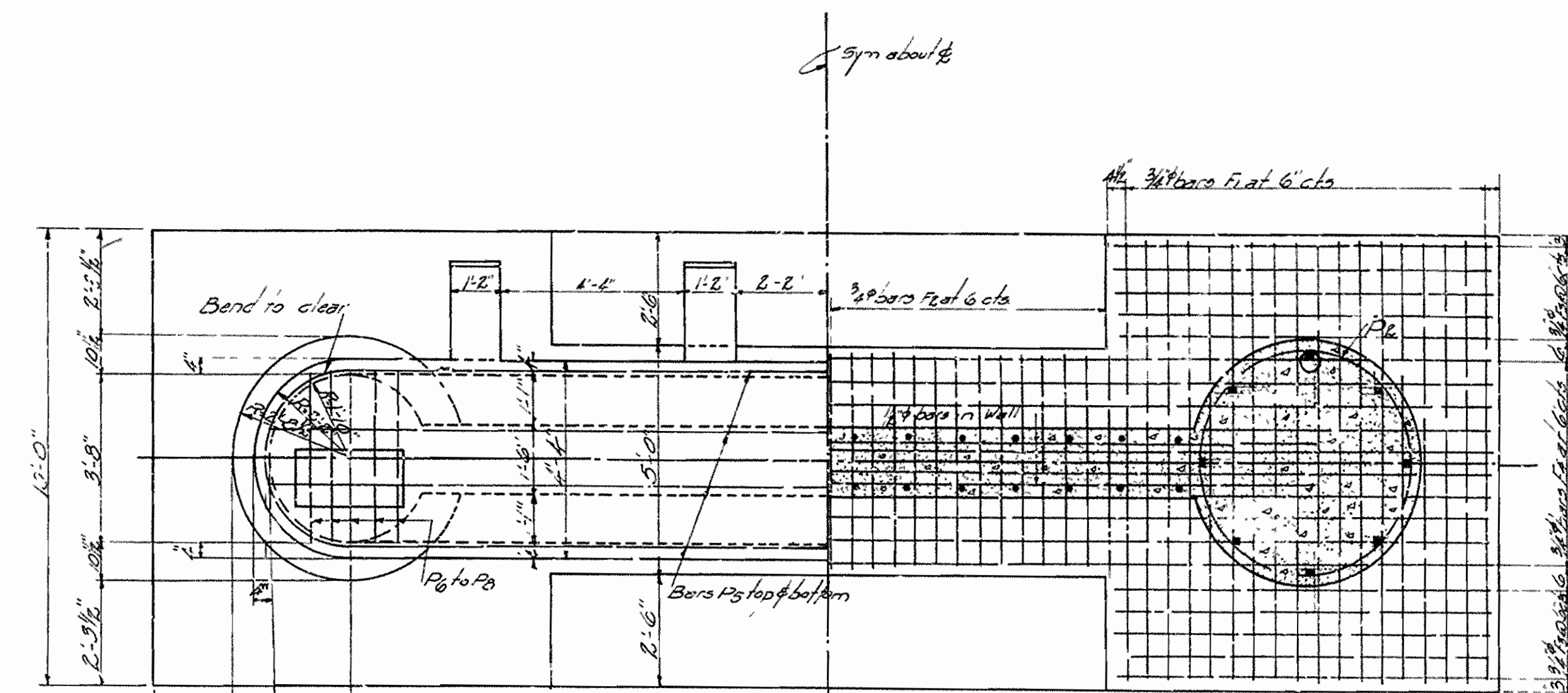
FISCAL YEAR	Job No	SHEET No	TOTAL SHEETS
1929	10-135	5	17

255-C 1929 5 17

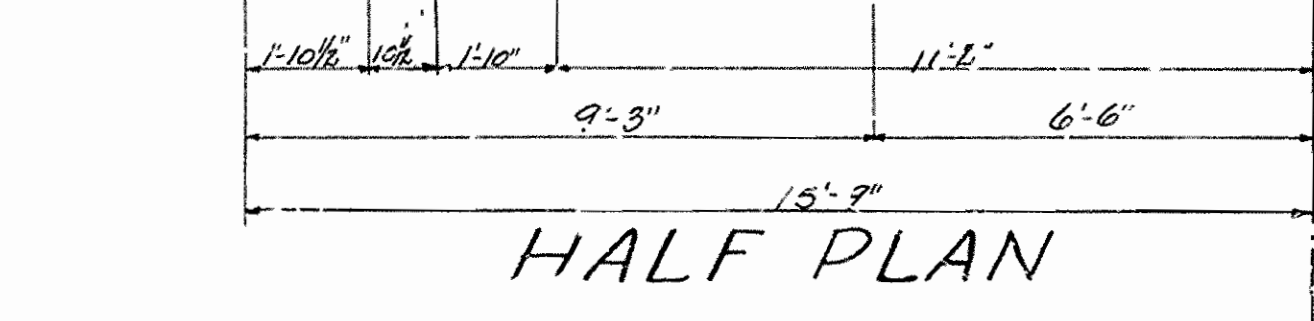


HALF ELEVATION

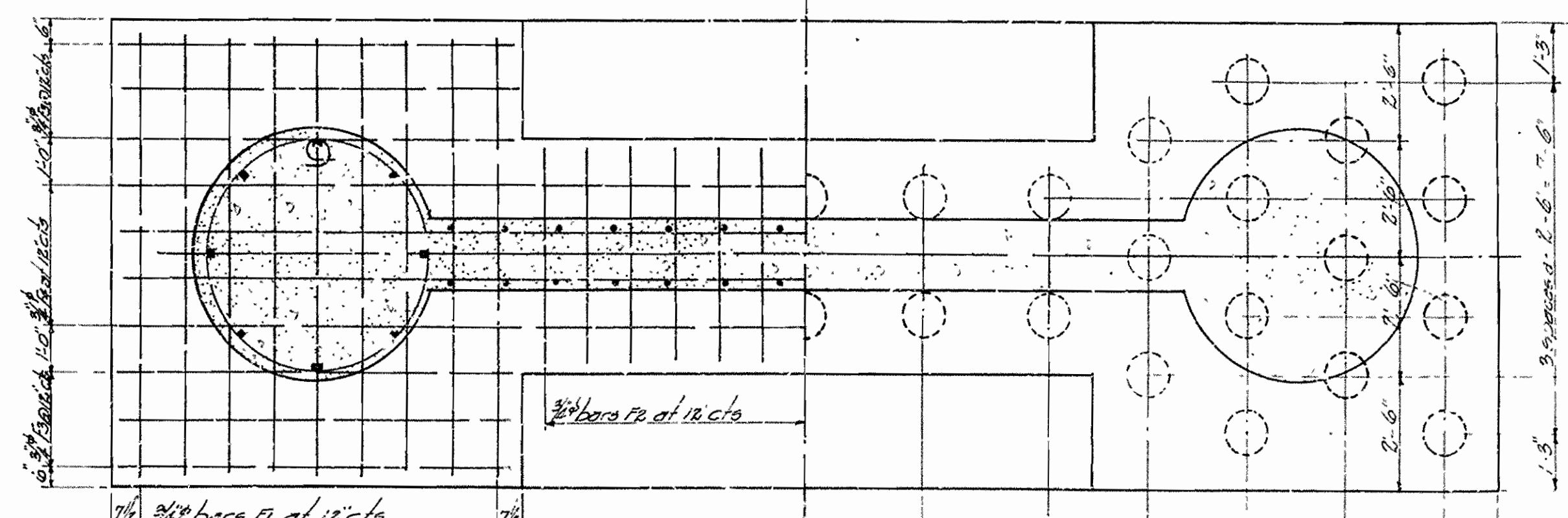
SECTION ONE



HALF FOOTING PLAN Showing Steel in Bottom



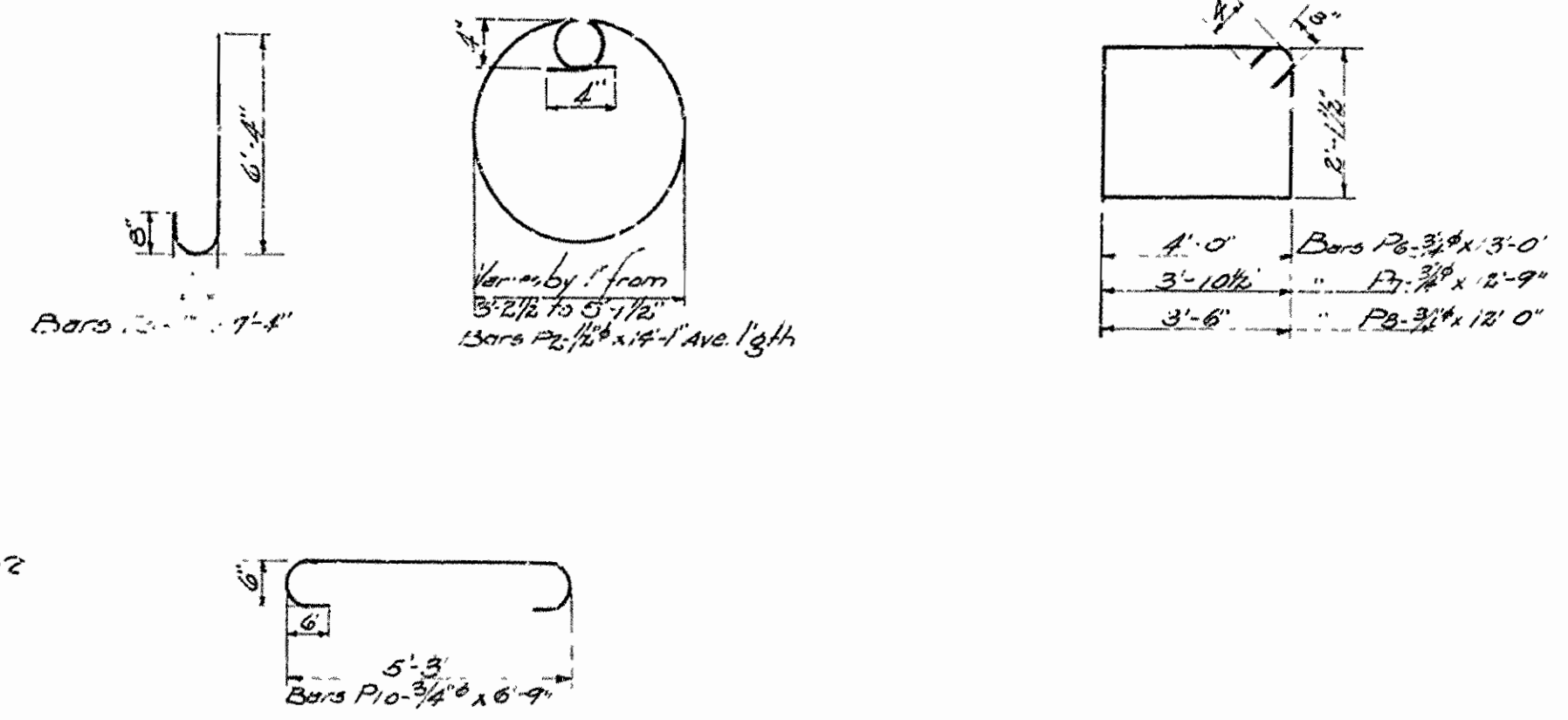
HALF PLAN



HALF FOOTING PLAN Showing Steel in Top

HALF PILE PLAN

This drawing includes notes for information only



**DETAILS OF PIERS
FOR BRIDGE OVER CACHE RIVER
MOXIE-JONESBORO ROAD
LAWRENCE-GREEN CO.
ROUTE 91 SECS 1 & 2**

**ARKANSAS STATE HIGHWAY DEPARTMENT
LITTLE ROCK, ARK.**

Drawn By: *LS* Date: 10-31-29
 Traced By: *Spauld* Date: 11-16-29
 Checked By: *W.D.* Date: 1-17-30
 BRIDGE NO. 1270 SCALE: 3/8" = 1'-0"
 DRAWING NO. 1972

M.B. Evans
BRIDGE ENGINEER