

STATE OF ARKANSAS
STATE HIGHWAY COMMISSION

FED. DIST. NO.	STATE	FED. AID PROJ. NO.	FISCAL YEAR	SHEET NO.	TOTAL SHEETS
6	ARK.	277B	1930	1	8

FISCAL YEAR	Job No.	SHEET NO.	TOTAL SHEETS
1930	1131	1	8

INDEX OF SHEETS

Sheet No	Drawing No.	Title
1	3087	Title Sheet
2	3088	Layout Bridge No. 1349
3	3089	Details of Piers Bridge No. 1349
4	2418	Details of 100'-0" Steel Truss 20'-0" Roadway
5	2276	Details of 33'-0" Concrete Pile Trestle 20'-0" Roadway
6	3090	Layout Bridge No. 1354
7	3091	Layout Bridge No. 1355
8	3092	Layout Bridge No. 1356

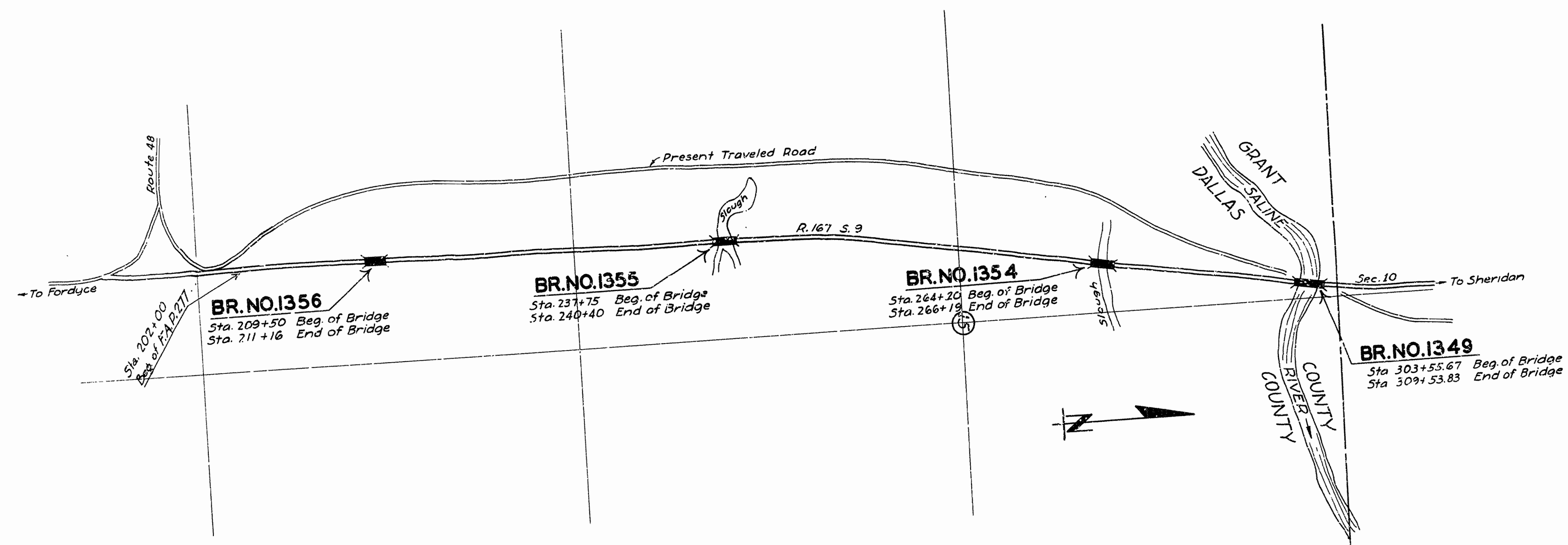
PLAN OF PROPOSED BRIDGES
ON
SALINE RIVER-FORDYCE ROAD
GRANT & DALLAS COUNTIES

ROUTE 167 SEC. 9 & 10
JOB No 1131
FEDERAL AID PROJECT NO. 277-B

QUANTITIES

Item	Quantity	Unit
S.P. & #12 Earth Excavation	1820	C.Y.
#13 Dry Excavation for Structures	80	C.Y.
#15 Wet Structural Excavation	355	C.Y.
SR & #32 Untreated Timber Piling	1008	Lin.Ft.
#54 Class 'A' Concrete	218.50	C.Y.
#54 Class 'S' Concrete	1309.29	C.Y.
SR & #54 Seal Concrete	50.41	C.Y.
#55 Reinforcing Steel	370337	Lbs.
#56 Structural Steel (Trusses)	87070	Lbs.
SR & #68 Precast Concrete Piling	5112	Lin.Ft.
SR & #69 Rip Rap (1" thick)	831	C.Y.
#74 Concrete Railing	2308	Lin.Ft.
* SR * Removal of Existing Structures		Lump Sum
* Non-Participating in Federal Aid		

Federal Aid Markers of approved design and furnished by the State will be placed on each end of each bridge.



Specifications approved by Chief, Bureau of Public Roads, September 28, 1925, and adopted by State Highway Commission May 30, 1925 with revisions and Special Provisions as follows:

Pamphlet	Revisions	Special Provisions	No. of Sheets
A	Revised Sept. 1st, 1928 Approved June 1st, 1929	Pamphlet I	51
B	Revised Nov. 1st, 1929	Earth Excavation	3
C	Revised July 1st, 1930	Concrete Aggregate	2
D	Revised July 1st, 1928 Approved Nov. 24th, 1928	Precast Concrete Piling	3
E	Revised Jan. 1st, 1930	Rip Rap	1
F	Revised Aug. 1st, 1929	Field Engineer's Office	1
G	Revised June 1st, 1929	Aluminum Paint	1
H	Revised Jan. 1st, 1930	Section 8.2	1
I	Revised May 30th, 1925	Structural Steel	1
J	Revised Jan. 1st, 1929 Approved June 1st, 1929	Removal of Existing Structures	1
K	Revised May 30th, 1925	Bridge Timber	12
L	Revised Jan. 1st, 1929	Seal Concrete	2

LAYOUT
Scale: 1" = 400'

LENGTH OF PROJECT	= 1228'-2" or 0.232 Miles
LENGTH OF BRIDGES	= 1228'-2"
LENGTH OF EMBANKMENT	= 0
LENGTH OF JOB	= 1228'-2" or 0.232 Miles

APPROVED
CHIEF ENGINEER - U. S. BUREAU OF PUBLIC ROADS

APPROVED
DISTRICT ENGINEER - U. S. BUREAU OF PUBLIC ROADS

APPROVED
CHIEF - U. S. BUREAU OF PUBLIC ROADS

APPROVED
CHAIRMAN - STATE HIGHWAY COMMISSION

APPROVED
STATE HIGHWAY ENGINEER

N.B. Shaw
BRIDGE ENGINEER

BRIDGES No. 1349, 1354, 1355 & 1356

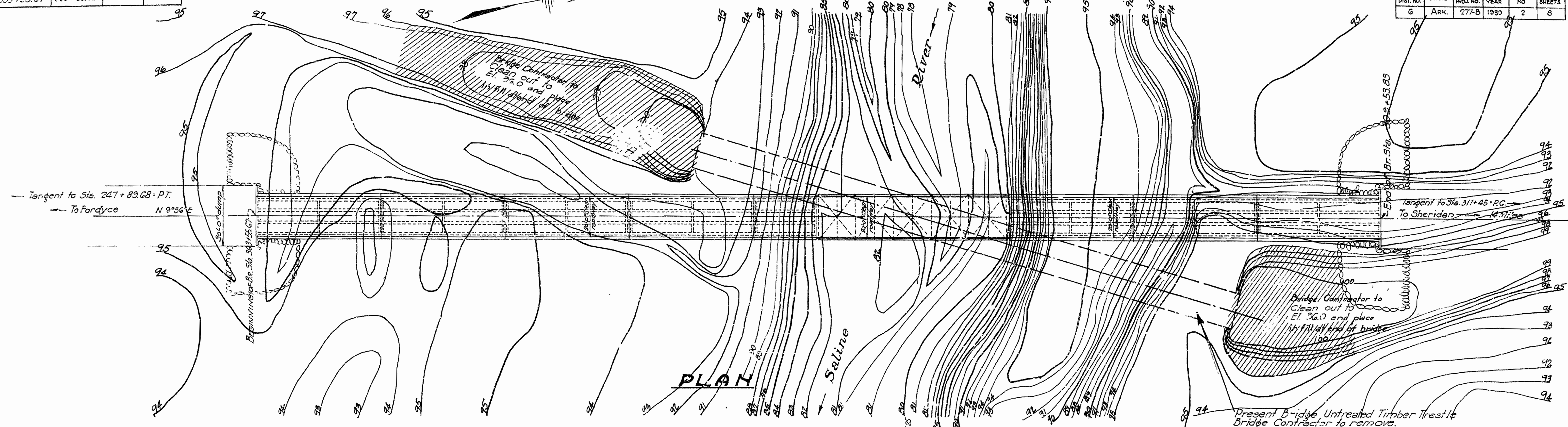
DRAWING NO. 3087

RIGHT OF WAY WIDTHS

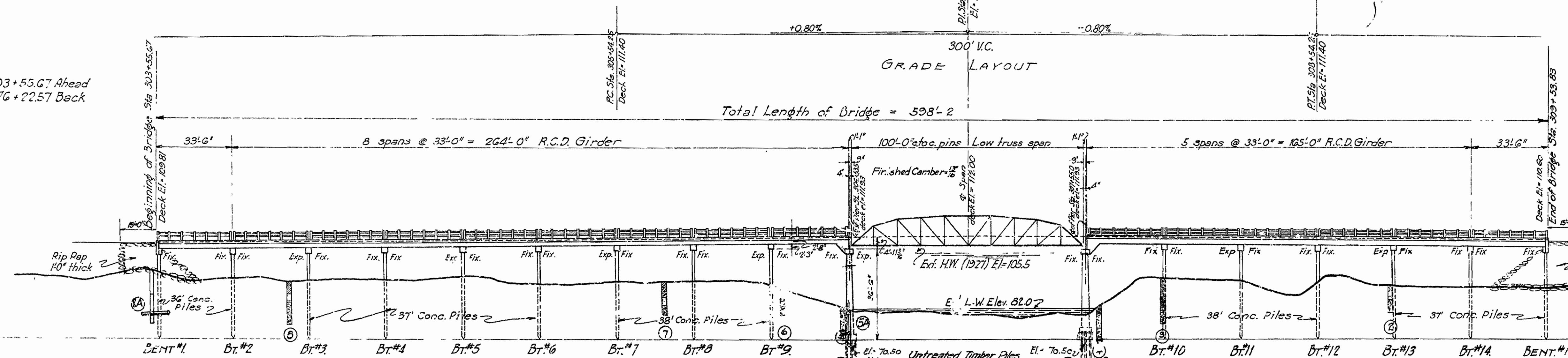
From Sta.	To Sta.	Right of Way	Left of Way
303+55.67	308+53.83	50'	50'

FISCAL YEAR	Job No.	SHEET NO.	TOTAL SHEETS
1930	1131	2	8

FEDERAL DIST. NO.	STATE	FED. AID PROJ. NO.	FISCAL YEAR	SHEET NO.	TOTAL SHEETS
6	ARK.	277-B	1930	2	8



EQUATION:
 End of Bridge Sta. 303+55.67 Ahead
 Sta. 276+22.57 Back



GENERAL NOTES:
 All exposed corners to have 3/8" chamfer unless otherwise noted.
 Precast concrete handrails to be 1:1:2 mix; maximum aggregate 3/4".
 All concrete above top of pier caps, except handrails, to be Class 5 concrete. Concrete pile trestle to be Class 3 thru-out except handrails.
 Reinforcing steel to deformed bars of structural or intermediate grade. Shop list and bending diagrams must be submitted and approved before fabrication is begun.
 Roadway drains and expansion devices to be paid for at the unit prices bid for reinforcing steel.
 Bridge contractor to clear channel as shown and to complete embankment at bridge ends.
 Bridge contractor to remove existing timber bridge.
 Traffic is to be maintained during construction.
 For details of Pier - See Draw. No. 3089
 For " of 100' Steel Truss " No. 2418
 For " of 83' Conc. pile trestle " No. 2276
 Specifications: Arkansas Standard Road and Bridge Specifications adopted May 20th, 1928 and revised, together with Special Provisions as listed on title sheet.

B.M. El. = 95.93
 Nail in roof of 16" holly
 80' r. Sta. 277+25

Test hole No 5 Sta. 304+13
 Ground El. 92.7
 5.5' Sandy Clay
 2.2' Fine Sand
 7.7' Coarse Sand
 0.6' Gravel

Test hole No 8A Sta. 303+55.67
 Ground El. = 98.0
 10' Sand Yellow Clay
 7' Med. Blue sand
 10' Siltstone lap
 4' Med. blue Sandy clay gravel.

Maximum design load to be 28 tons per pile for Concrete piles
 Maximum design load to be 15 tons per pile for Timber piles.
 Volume occupied by imbedded pile heads will not be included in pay quantities of concrete in footings and caps

Test hole No 5A Sta. 306+53-10' Lt
 Ground El. = 91.7
 74' White sand and pea gravel.
 15' Gravel and Diatom clay
 20' Brown clay 25% sand.
 Very fine sand.

Test hole No 7 Sta. 305+74
 Ground El. 92.8
 8.8' Sandy Clay
 3.0' Fine Sand
 0.8' Gravel

Test hole No 5a Sta. 306+50
 Ground El. 92.7
 0.8' Sand
 7.5' Gravel
 0.9' Hard packed Sand

QUANTITIES

Item 2012 Earth Excavation	1220 Cu Yds.
" 13 Wet Excavation for Structures	353 Cu Yds.
" SP&52 Untreated Timber Piling	1008 Lin Ft.
" 54 Class 24" Concrete	218.50 Cu Yds.
" 54 Class 5" Concrete	617.67 Cu Yds.
" 26 Reinforcing Steel	1797.33 Lbs.
" 66 Structural Steel (Trusses)	87070 Lbs.
" SP&61 Precast Concrete Filling	2236 Lin. Ft.
" SP&69 Rip Rap 14" thick	213 Cu Yds.
" 14 Concrete Railings	1006'0" Lin. Ft.
" SP 54 Seal Concrete	5041 Cu Yds.
" 13 Dry Excavation for Structures	30 " "

* Non-Participating in Federal Aid.

Test hole No 3
 Sta. 307+86 Gr. El. 95.1
 10.1' Sandy Clay
 3.2' Clay
 1.0' Sand & Little Clay
 3.8' Fine Sand

**LAYOUT OF
 SALINE RIVER BRIDGE
 DALLAS & GRANT COUNTIES
 ROUTE 167 SEC. 3 & 10**

**ARKANSAS STATE HIGHWAY COMMISSION
 LITTLE ROCK, ARK.**

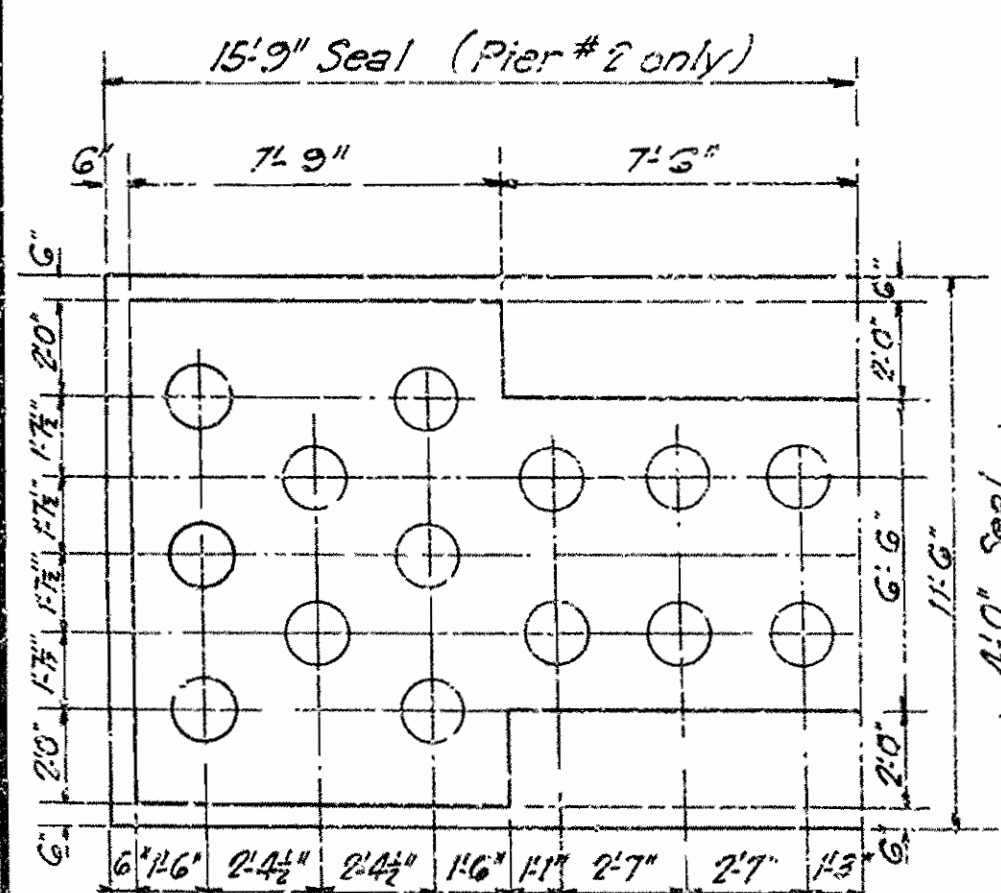
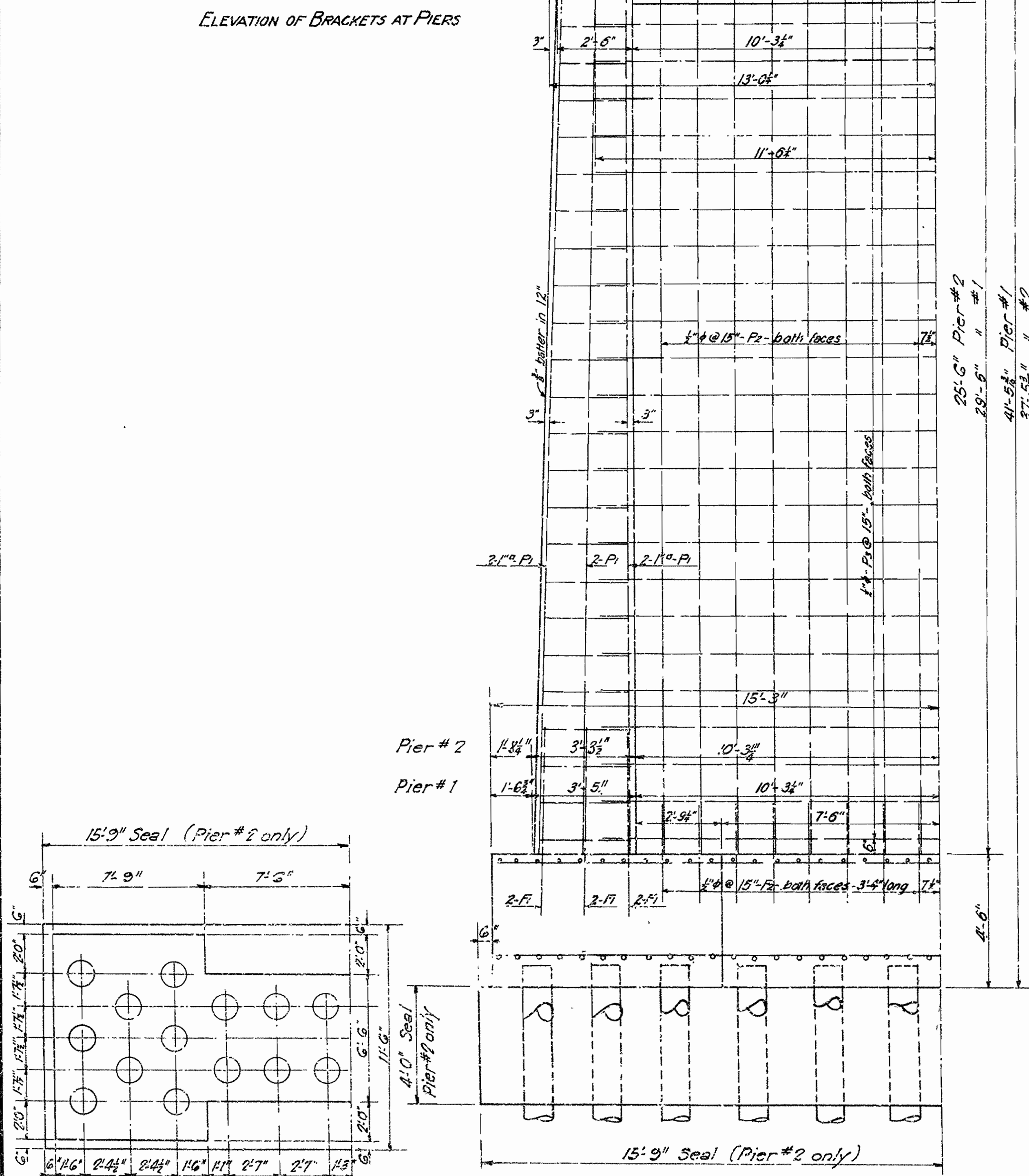
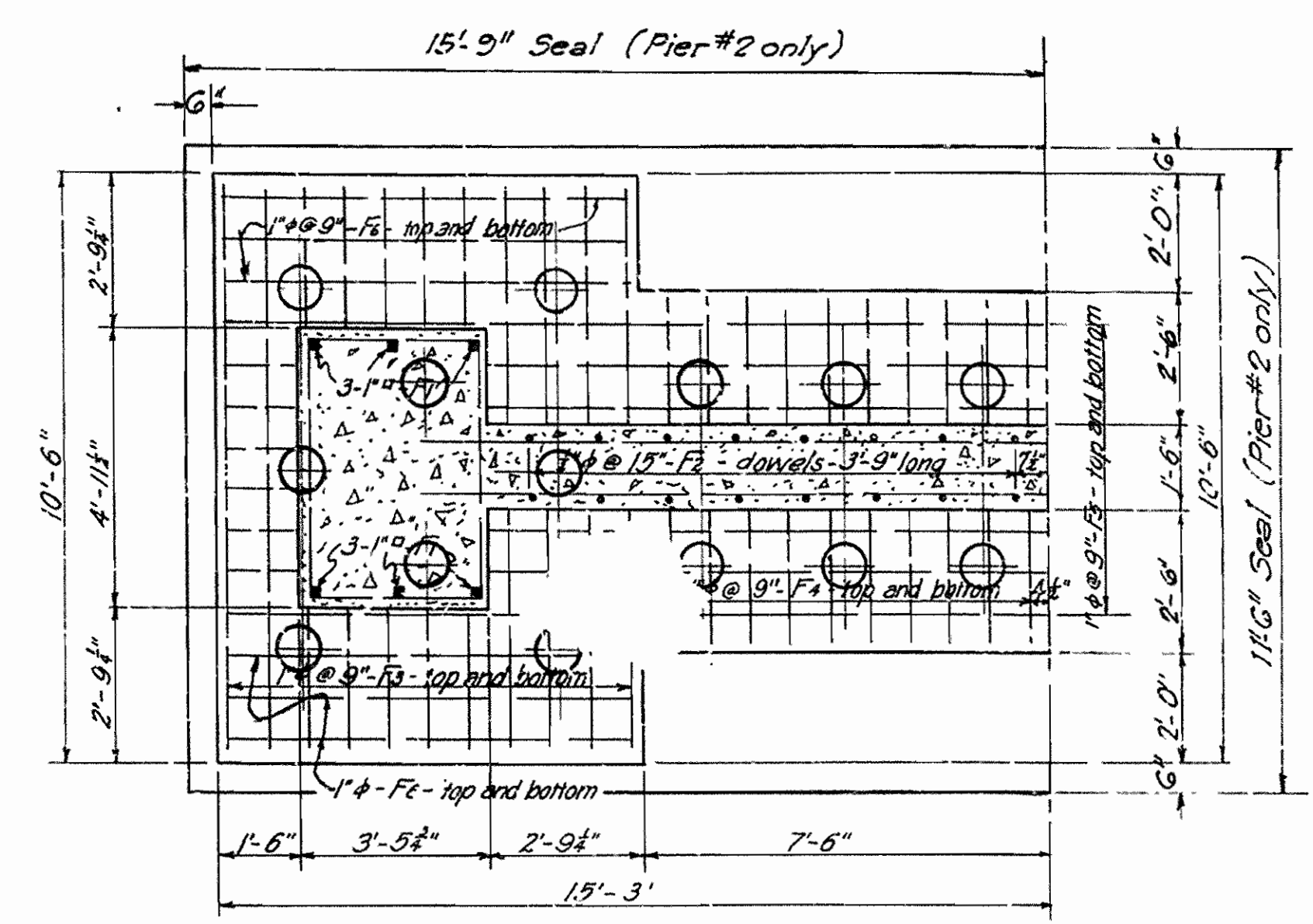
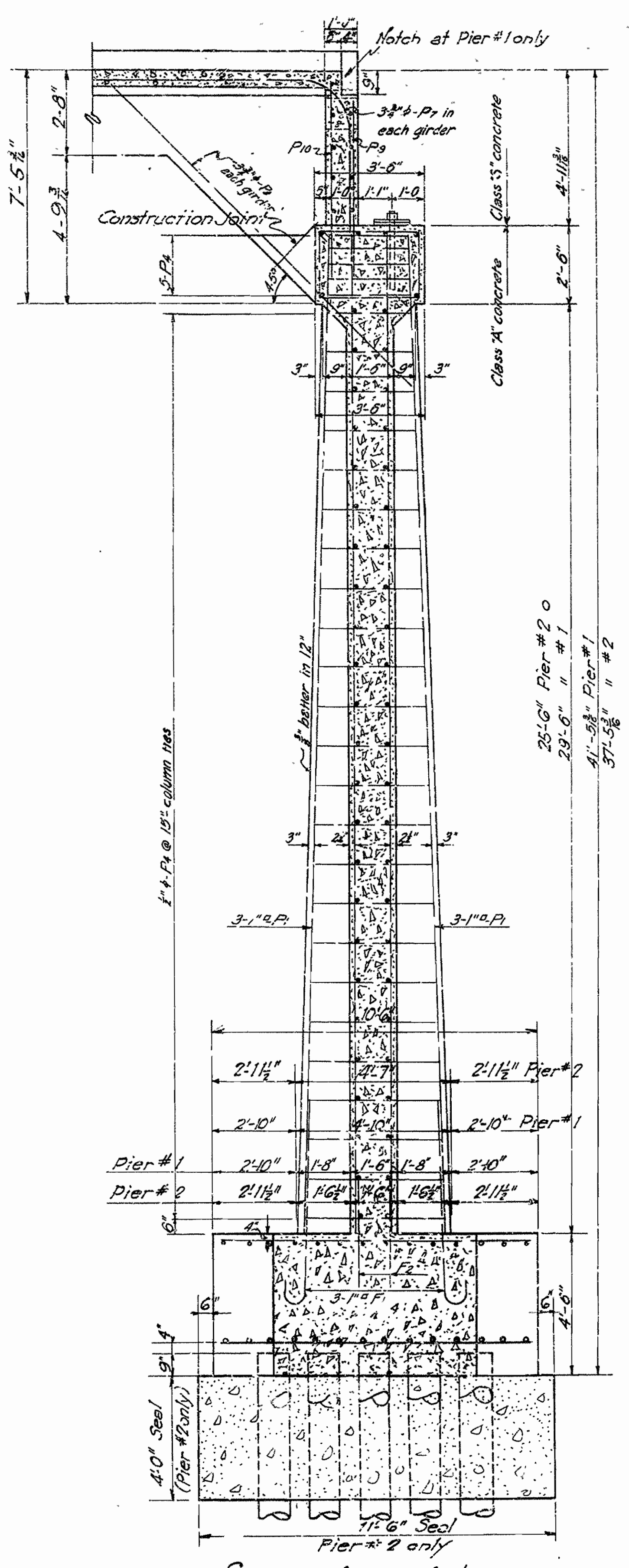
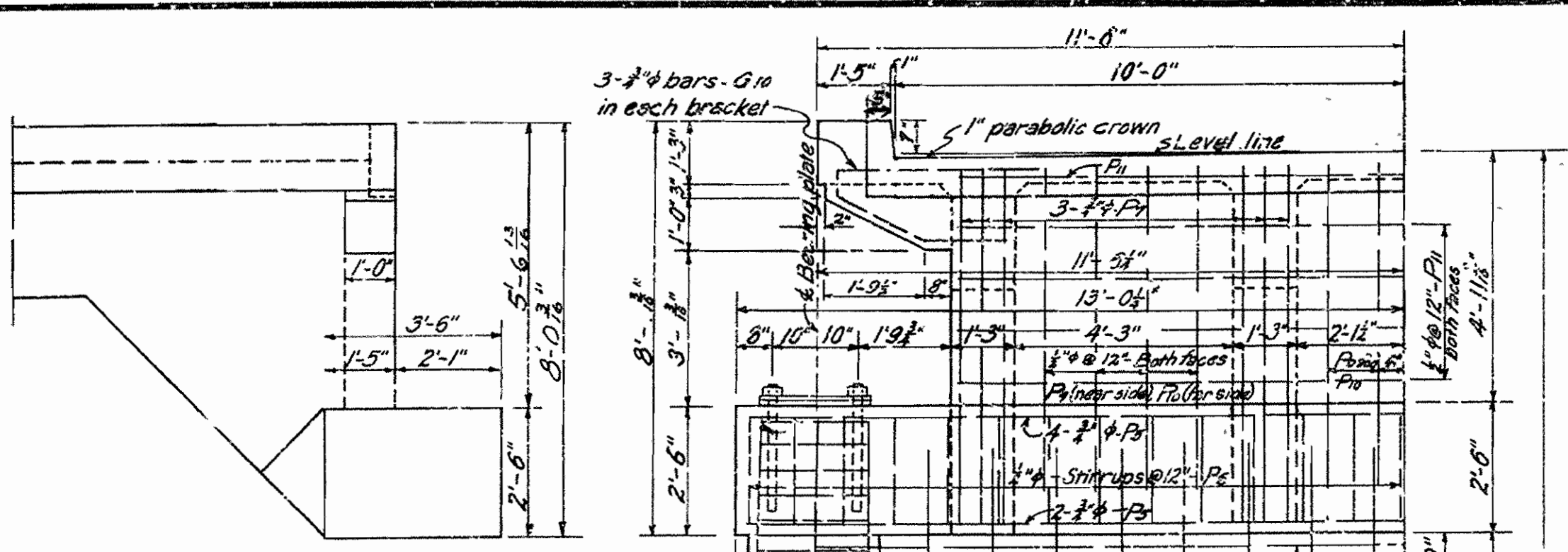
Drawn By: *EM* Date: _____
 Traced By: *SM* Date: *2-19-31*
 Checked By: _____ Date: _____

Scale: 1 in. = 25 ft.
 BRIDGE NO. 1349 DRAWING NO. 3088

M.B. Lewis
 BRIDGE ENGINEER

FISCAL YEAR	JOB No.	SHEET NO.	TOTAL SHEETS
1930	1131	3	8

FED. ROAD DIST. NO.	STATE	FED. AID PROJ. NO.	FISCAL YEAR	SHEET NO.	TOTAL SHEETS
6	ARK.	277-B	1930	3	8



MARK	SIZE	LENGTH	BENDING DIAGRAMS
P1	1" \square	6'-4"	
P2	1/2" ϕ	Varies from 10'-2" to 16'-0"	
P6	1/2" ϕ	11'-2"	
P7	3/8" ϕ	13'-8"	
G10	?	9'-0"	

DETAILS OF PIERS
 BRIDGE OVER SALINE RIVER
 STA. 303+ TO STA. 310+
 SHERIDAN - FORDYCE ROAD
 DALLAS - GRANT COUNTIES
 ROUTE 167 SEC. 9 and 10
ARKANSAS STATE HIGHWAY COMMISSION
 LITTLE ROCK, ARK.
 Drawn By: *RGH* Date: 2-17-30
 Traced By: *DKC* Date: 2-20-30
 Checked By: _____ Date: _____
 BRIDGE NO. 1349 DRAWING NO. 3089
 Scale: 1/2" = 1' ft.

N. B. Jenner
 BRIDGE ENGINEER