

FISCAL YEAR	JOB NO.	SHEET NO.	TOTAL SHEETS	FED. DIST. NO.	STATE	FED. AID PROJ. NO.	FISCAL YEAR	SHEET NO.	TOTAL SHEETS
1930	595	1	6	6	ARK.	260-B	1930	1	6

INDEX OF SHEETS

Sheet No.	Drwg No.	Title Sheet
1	2761	Title Sheet
2	2762	Layout of Br. No. 1462
3	2329	Details of Std 36' R.C.D. Girder Span, 24' Clear Roadway, on Conc. Pile Bents.
4	2763	Layout of Br. No. 1463
5	2764	Details of Piers for Br. No. 1463
6	2447	Details of Std 90' Low Truss Span, 24' Clear Rdwy.

STATE OF ARKANSAS
STATE HIGHWAY COMMISSION

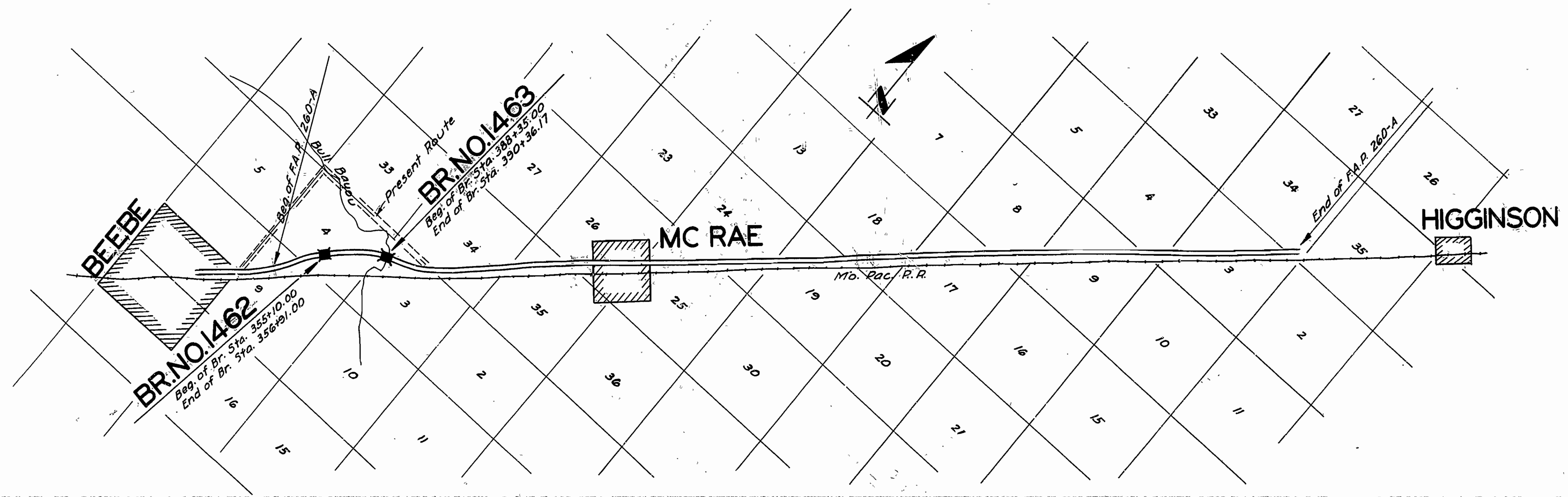
PLAN OF PROPOSED BRIDGES OVER BULL BAYOU & RELIEF WHITE COUNTY

ROUTE 67 SEC. 12
JOB No 595
FEDERAL AID PROJECT NO. 260-B

QUANTITIES

* S.P.	Item No.	Description	1,000 Cu. Yds.	Lin. Ft.
	12	Earth Excavation	1,000	
	13	Dry Excavation for Structures	162	
	18	Wet " "	203	
S.P.	52	Untreated Timber Piling	1,200	Lin. Ft.
	54	Class A Concrete	124.08	Cu. Yds.
	54	" "	453.01	" "
S.P.	54	Seal Concrete	43.04	" "
	55	Reinforcing Steel	134,767	Lbs.
	56	Structural Steel (Trusses)	90,235	" "
S.P.	68	Precast Concrete Piling	1,435	Lin. Ft.
S.P.	69	Rip Rap	273	Cu. Yds.
	74	Precast Concrete Railing	580	Lin. Ft.

* Non-Participating in Federal Aid.



Specifications approved by Chief, Bureau of Public Roads, September 28, 1925, and adopted by State Highway Commission May 30, 1925, with revisions and Special Provisions as follows:

REVISIONS

Pamphlet	Revised	Date	Approved
A	Revised	Sept. 1st, 1928	Approved June 1st, 1929
B	Revised	Nov. 1st, 1929	
C			
D	Revised	July 1st, 1928	Approved Nov. 24th, 1928
E	Revised	Jan. 1st, 1930	
F	Revised	Aug. 1st, 1929	
G	Revised	June 1st, 1929	
H	Revised	Jan. 1st, 1930	
I	"	Mar. 1st, 1930	
J	Revised	Jan. 1st, 1929	Approved June 1st, 1929
K			
L	Revised	Jan. 1st, 1929	Approved June 1st, 1929

SPECIAL PROVISIONS

Item	No. of Sheets
Pamphlet I	51
Field Engineer's Office	1
Timber Piling	12
Seal Concrete	2
Precast Conc. Piling	3
Rip Rap	1
Earth Excavation	1

LAYOUT
Scale: 1"=3000'

GROSS & NET LENGTH OF PROJECT	= 382'-2" = 0.072 MI.
LENGTH OF BRIDGES	= 362'-2"
LENGTH OF EMBANKMENT	= 32'-10"
LENGTH OF JOB	= 415'-0"

APPROVED: _____
CHIEF ENGINEER - U. S. BUREAU OF PUBLIC ROADS

APPROVED: _____
DISTRICT ENGINEER - U. S. BUREAU OF PUBLIC ROADS

APPROVED: _____
CHIEF - U. S. BUREAU OF PUBLIC ROADS

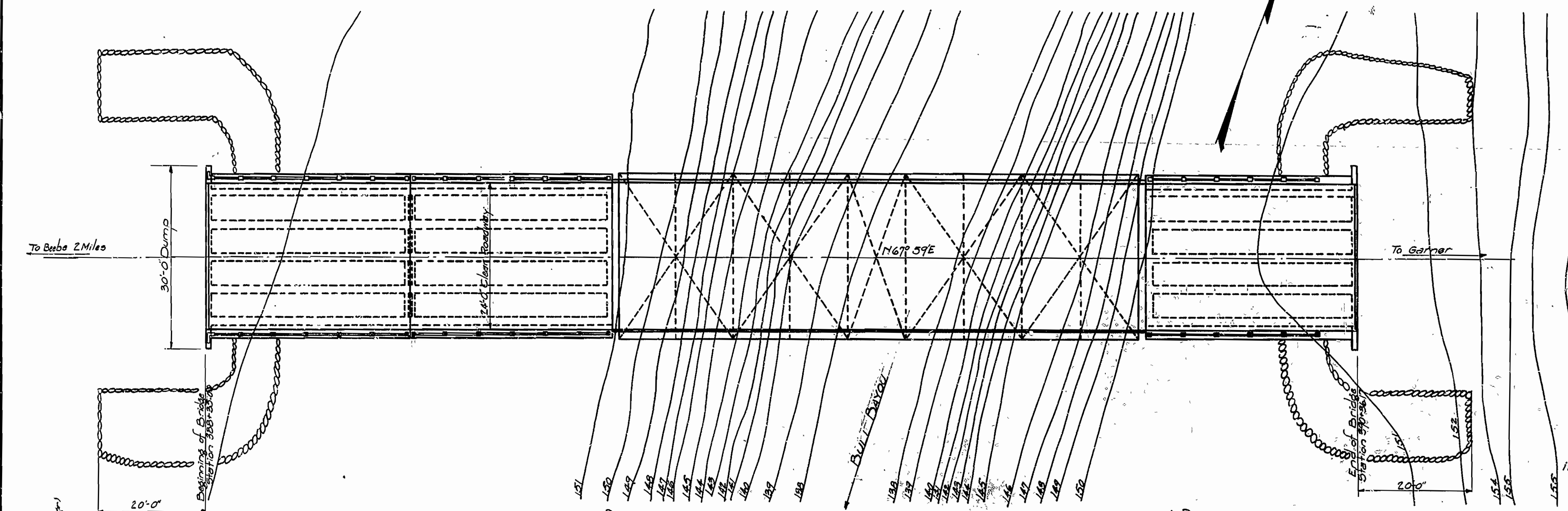
APPROVED: _____
CHAIRMAN - STATE HIGHWAY COMMISSION

APPROVED: _____
STATE HIGHWAY ENGINEER

W.B. Davis
BRIDGE ENGINEER

FISCAL YEAR	Job No	SHEET No.	TOTAL SHEETS
1930	595	4	12

F.D. ROAD DIST. No.	STATE	FED. AID PROJ. No.	FISCAL YEAR	SHEET No.	TOTAL SHEETS
6	ARK.	2604	1930	4	12

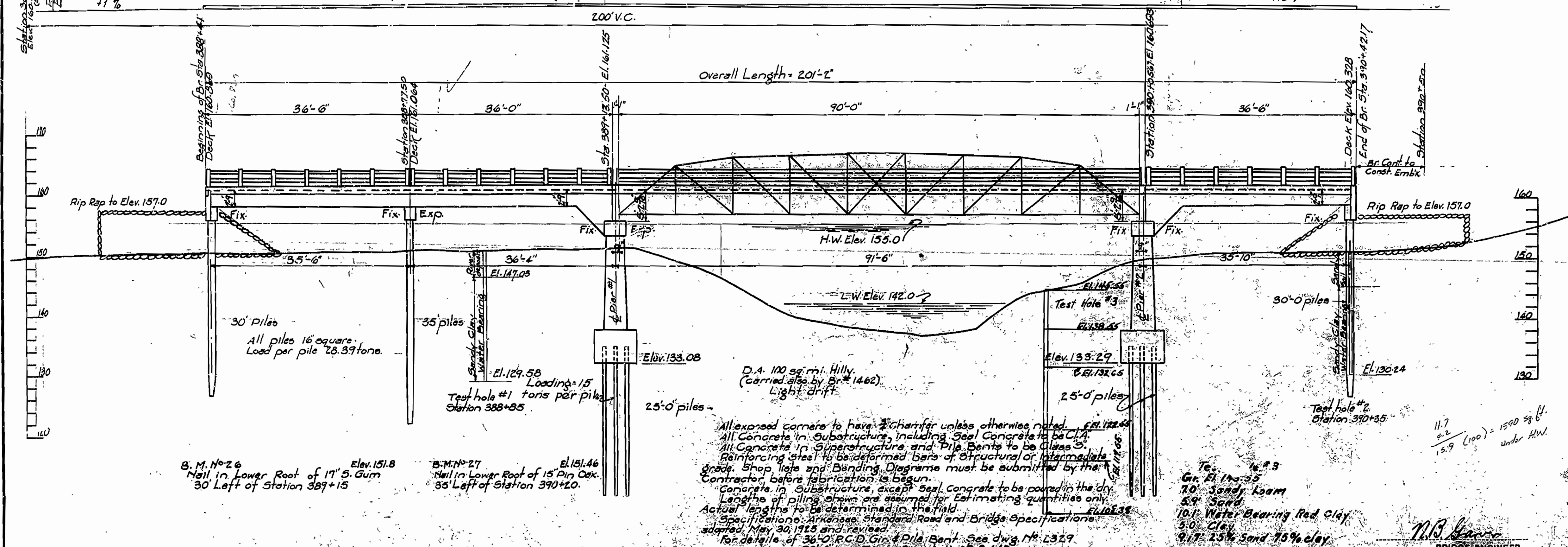


175
 122
 123
 124
 125
 126
 127
 128
 129
 130
 131
 132
 133
 134
 135
 136
 137
 138
 139
 140
 141
 142
 143
 144
 145
 146
 147
 148
 149
 150
 151
 152
 153
 154
 155
 156
 157
 158
 159
 160
 161
 162
 163
 164
 165
 166
 167
 168
 169
 170
 171
 172
 173
 174
 175
 176
 177
 178
 179
 180
 181
 182
 183
 184
 185
 186
 187
 188
 189
 190
 191
 192
 193
 194
 195
 196
 197
 198
 199
 200

SHOP GAMBER
 PERMANENT GAMBER DUE TO V.C.
 TOTAL GAMBER

QUANTITIES

Item No. 12	Earth Excavation	400	Cu. Yds.
" 13	Dry Excavation for Structures	162	" "
" 13	Wet Excavation for Structures	203	" "
" 54	Class A Conc.	124.08	" "
" 54	Class S Conc.	218.51	" "
S.P. " 54	Seal Conc.	4.04	" "
S.P. " 52	Untreated Timber Piling	1200	Lin. Ft.
S.P. " 68	Precast Conc. Piling	475	Lin. Ft.
S.P. " 69	Rip Rap	124	Cu. Yds.
" 74	Concrete Railing	218	Lin. Ft.
" 55	Reinforcing Steel	66,326	Lbs.
" 56	Structural Steel (Trusses)	90,235	" "



Revised Test Hole #3 added
 P.R.B. 8-15-30
 E.A.W. 11-28-30

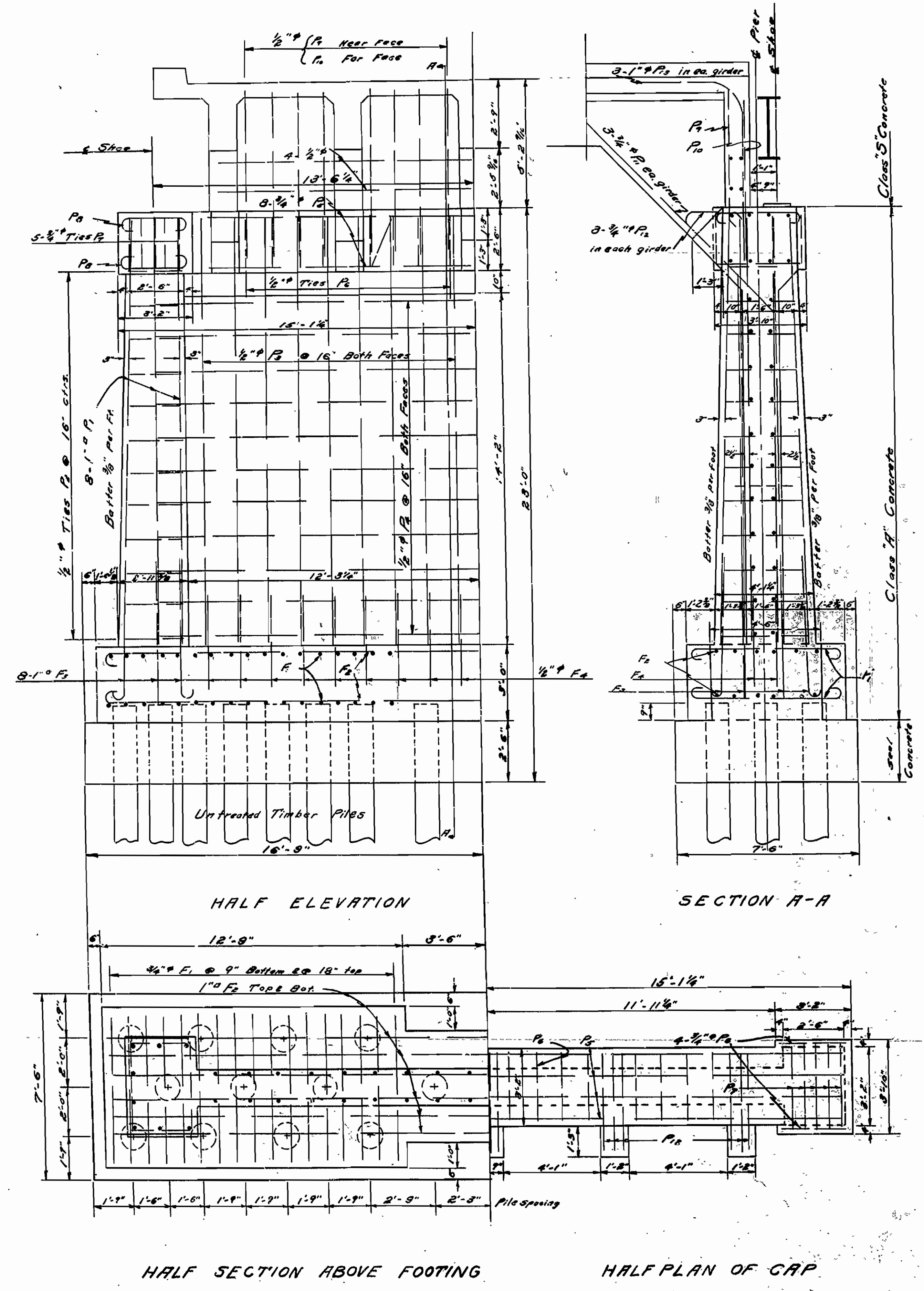
LAYOUT OF
 BRIDGE OVER BULL BAYOU
 LONGKE COUNTY LINE - MORNING SUN ROAD
 WHITE COUNTY
 ROUTE 67 SEC. 12
ARKANSAS STATE HIGHWAY COMMISSION
 LITTLE ROCK, ARK.
 Drawn By: G.S.V. Date: 6-28-30
 Traced By: W.A.Z. Date:
 Checked By: Date:
 BRIDGE No. 1463 DRAWING No. 2763
 Scale: 1" = 10'

D.A. 100 sq. mi. Hilly.
 (Carried over by Br. # 1462)
 Light drift
 All exposed corners to have chamfer unless otherwise noted.
 All concrete in substructure, including Seal Concrete to be Class A.
 All concrete in superstructure and pile bents to be Class S.
 Reinforcing steel to be deformed bars of structural or intermediate grade. Shop lists and bending diagrams must be submitted by the contractor before fabrication is begun.
 Concrete in substructure, except Seal Concrete to be poured in the dry.
 Lengths of piling shown are assumed for estimating quantities only.
 Actual lengths to be determined in the field.
 Specifications: Arkansas Standard Road and Bridge Specifications adopted May 30, 1925 and revised.
 For details of 36" R.C.D. Girder Pile Bent, see dwg. No. L329
 90'-0" Low Truss, see dwg. No. L447

M.B. Lewis
 BRIDGE ENGINEER

FISCAL YEAR	JOB No.	SHEET No.	TOTAL SHEETS
1930	595	5	12

FED. ROAD DIST. No.	STATE	FED. AID PROJ. No.	FISCAL YEAR	SHEET No.	TOTAL SHEETS
6	ARK.	260-B	1930	5	12



Mark	Size	Length	A	B	
F1	3/4"	7'-6"	6'-0"	6"	
F2	1"	34'-0"	32'-0"	8"	
F3	1"	6'-6"	5'-6"	8"	
F4	1/2"	Varies from 11'-11" to 10'-2"	Varies from 2'-11/2" to 2'-7"	Varies from 2'-8 1/2" to 3'-8 1/2"	
F5	1/2"	6'-7"	2'-11/2"	2'-8 1/2"	
F6	3/4"	31'-2"	28'-8"	6"	
F7	3/4"	4'-2"	2'-8"	6"	
F8	3/4"	6'-0"	4'-6"	6"	
F9	1"	10'-9"			

3/4"

NOTE:
 For details of 36'-0" R.C.D. girder span see dng. R329
 " 90' Low truss " " 2447
 " general notes see drawing No. 2763

DETAILS OF PIERS
 BRIDGE OVER BULL BAYOU
 LONOKE COUNTY LINE-MORNING SUN ROAD
 ROUTE 67 SEC. 12
ARKANSAS STATE HIGHWAY COMMISSION
 LITTLE ROCK, ARK.
 Drawn By: G.S.K. Date: 5-22-30
 Traced By: H.M.H. Date: 5-22-30
 Checked By: _____ Date: _____
 BRIDGE NO. 1463
 Scale: 3/8" = 1'
 DRAWING NO. 2764

M.B. Gann
 BRIDGE ENGINEER