

FISCAL YEAR	JOB NO.	SHEET NO.	TOTAL SHEETS
1930	1-1009	1	9

FED. DIST. NO.	STATE	FED. AID PROJ. NO.	FISCAL YEAR	SHEET NO.	TOTAL SHEETS
6	ARK.	258-E	1930	1	9

STATE OF ARKANSAS
STATE HIGHWAY COMMISSION

PLAN OF PROPOSED BRIDGES
ON
FORREST CITY-EAST ROAD
ST. FRANCIS COUNTY

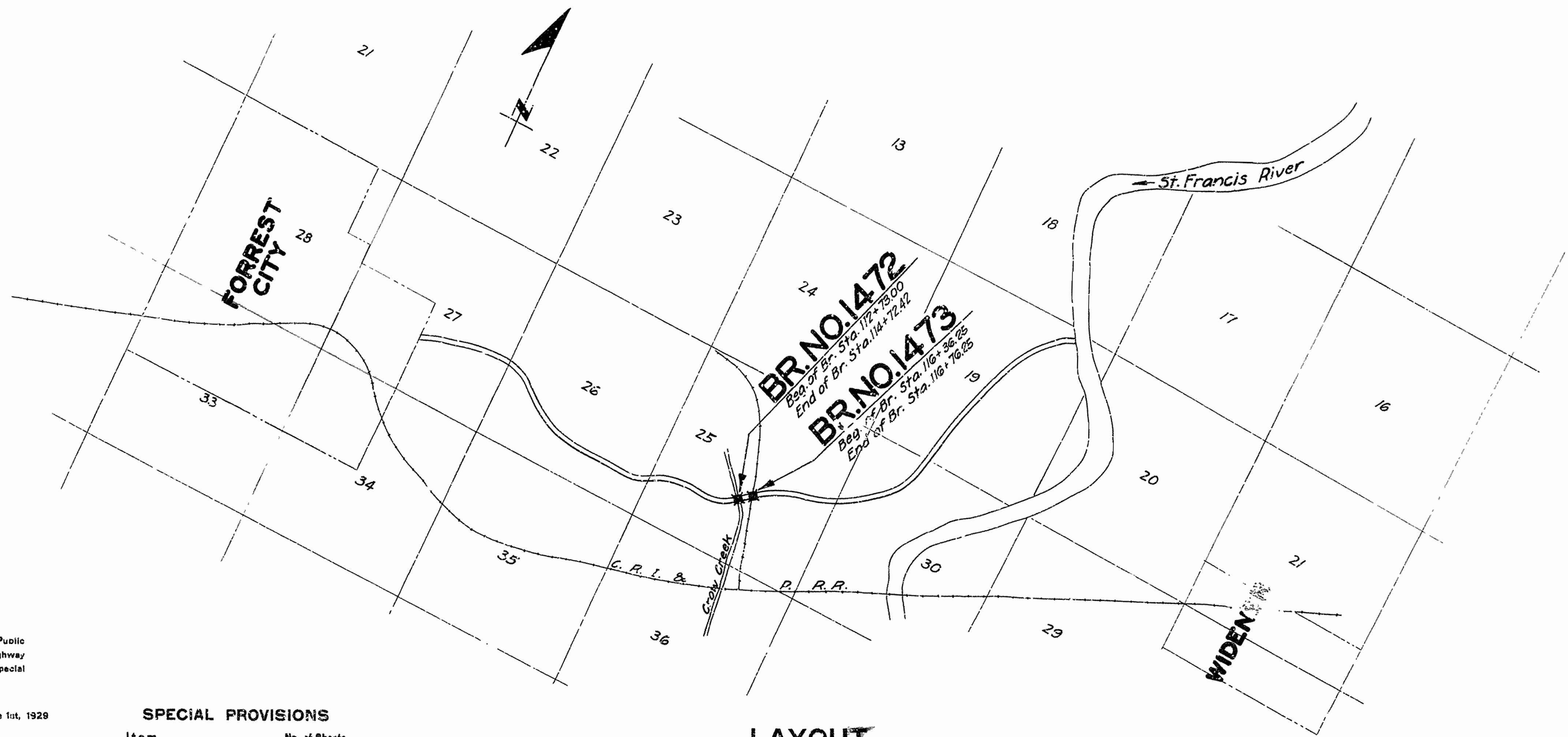
QUANTITIES

Item No. 13	Dry Excavation for Structures	848 Cu Yds.
" " 13	Wet " " "	88 Cu Yds.
" " 13	S.P. " " "	91 Cu Yds.
" " 54	Class A Concrete	522.44 Cu Yds.
" " 54	" S " "	207.87 Cu Yds.
" " 55	Reinforcing Steel	90,707 Lbs.
" " 56	Structural Steel (Beams)	67000 Lbs.
" " 56	" " (Trusses)	98000 Lbs.
" " 74	Concrete Railing	488 Lin. Ft.

INDEX OF SHEETS

Sheet No. 1	Drwg. No. 2512	Title Sheet
" " 2	" " 2573	Layout Br. No. 1472
" " 3	" " 2574	Details of Abutments and Handrail Br. No. 1472
" " 4	" " 2575	" " Piers Br. No. 1472
" " 5	" " 2576	" " Benches Br. No. 1472
" " 6	" " 2577	" " 90' Deck Truss and 35' I Beam Spans
" " 7	" " 2578	Layout of Br. No. 1473
" " 8	" " 2579	Details of Abutments Br. No. 1473
" " 9	" " 2361	" " 40' R.C.D. Girder 27'-0" Clear Rdy.

ROUTE 70 SEC. 19
JOB NO. H009
FEDERAL AID PROJECT NO. 258 E



LAYOUT
Scale: 1" = 2000'

LENGTH OF PROJECT	= 239.42 Ft. = 0.045 mi.
LENGTH OF BRIDGES	= 239.42 Ft.
LENGTH OF EMBANKMENT	= 0
LENGTH OF JOB	= 239.42 Ft.

Specifications approved by Chief, Bureau of Public Roads, September 28, 1925, and adopted by State Highway Commission May 30, 1925 with revisions and Special Provisions as follows:

REVISIONS

Pamphlet A	Revised Sept. 1st, 1928	Approved June 1st, 1929
" B	Revised Nov. 1st, 1929	
" C		
" D	Revised July 1st, 1928	Approved Nov. 24th, 1928
" E	Revised Jan. 1st, 1930	
" F	Revised Aug. 1st, 1929	
" G	Revised June 1st, 1929	
" H	Revised Jan. 1st, 1930	
" I		
" J	Revised Jan. 1st, 1929	Approved June 1st, 1929
" K		
" L	Revised Jan. 1st, 1929	Approved June 1st, 1929

SPECIAL PROVISIONS

Item	No. of Sheets
Pamphlet I	51

APPROVED
CHIEF ENGINEER - U. S. BUREAU OF PUBLIC ROADS

APPROVED
DISTRICT ENGINEER - U. S. BUREAU OF PUBLIC ROADS

APPROVED
CHIEF U. S. BUREAU OF PUBLIC ROADS

APPROVED
CHAIRMAN - STATE HIGHWAY COMMISSION

APPROVED
STATE HIGHWAY ENGINEER

N.B. Gunn
BRIDGE ENGINEER

BRIDGES No. 1472, 1473

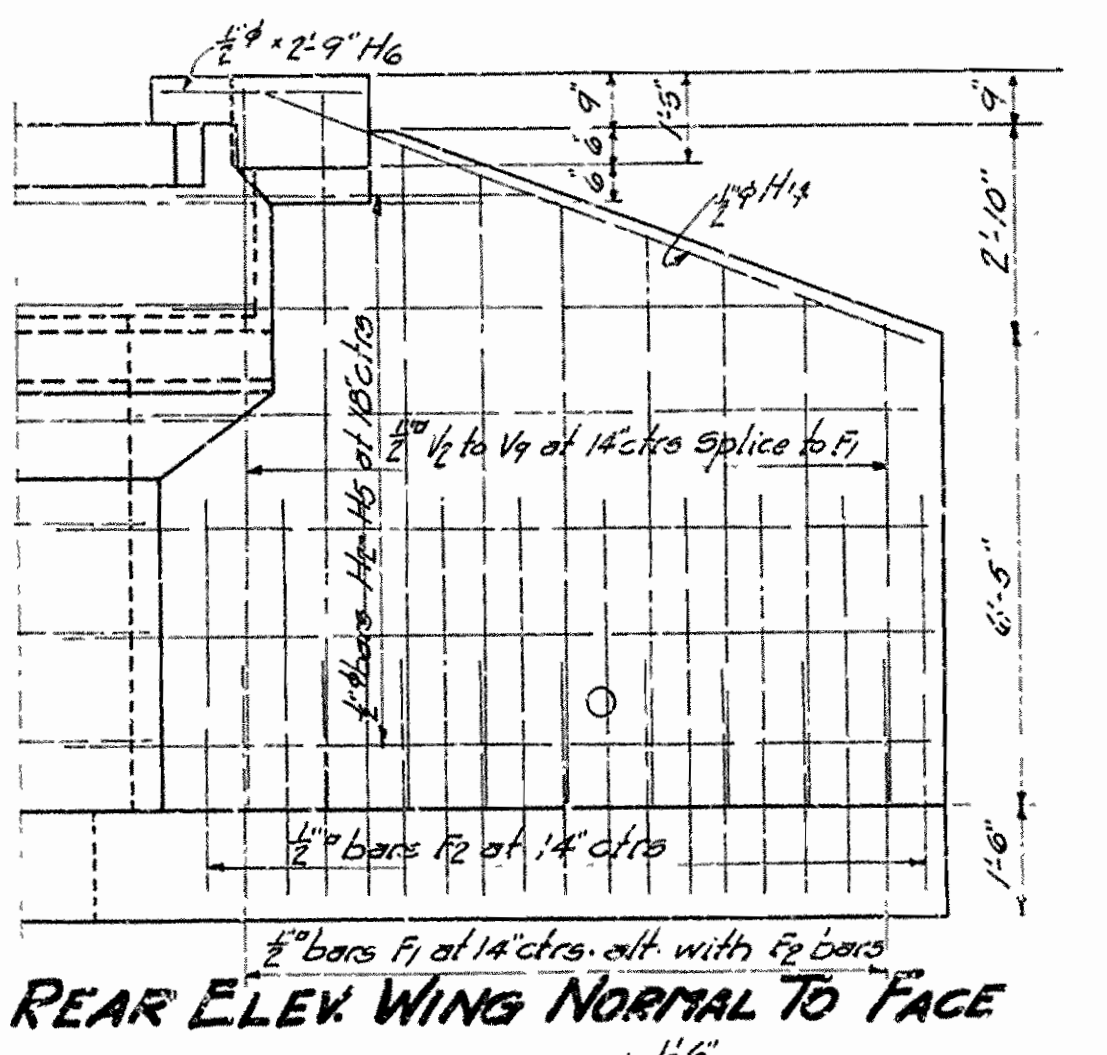
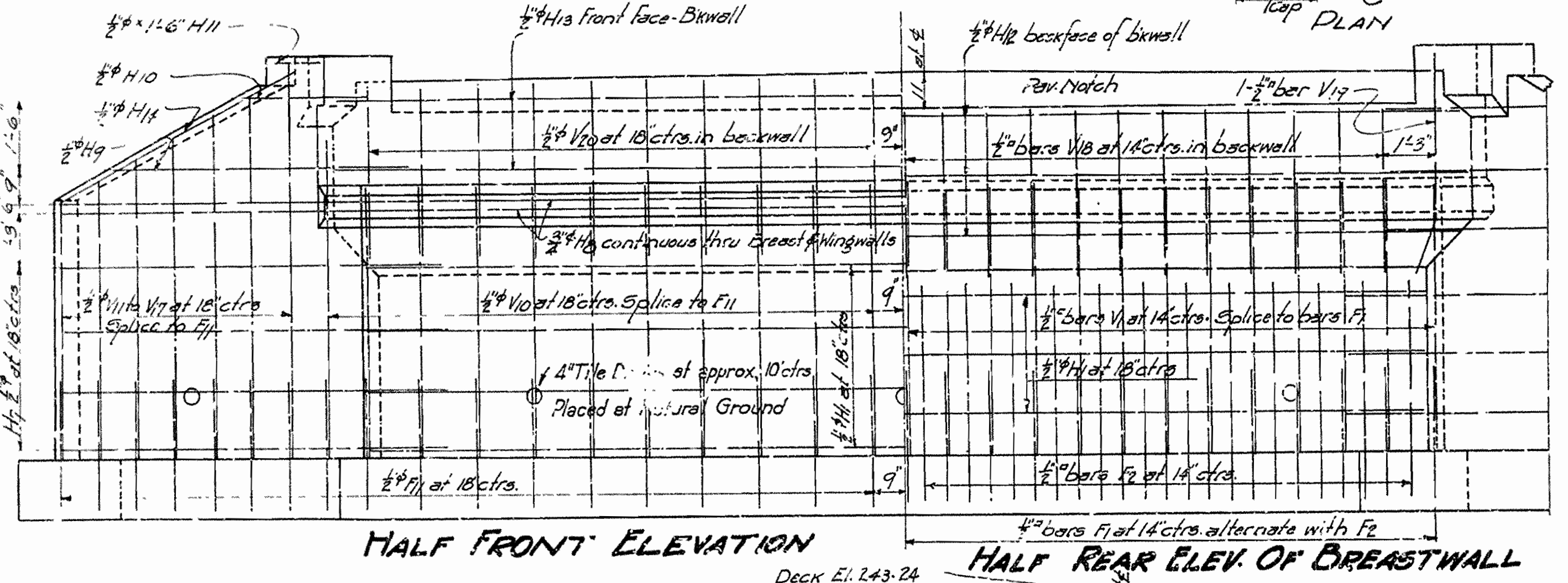
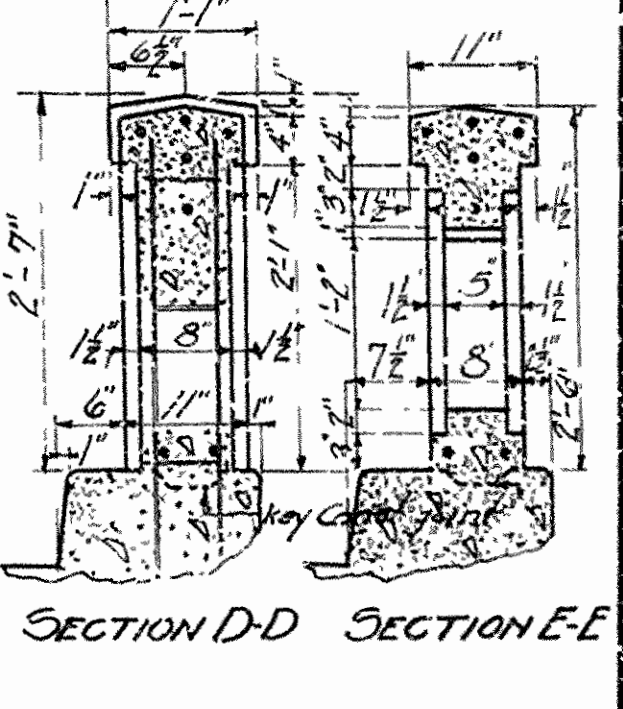
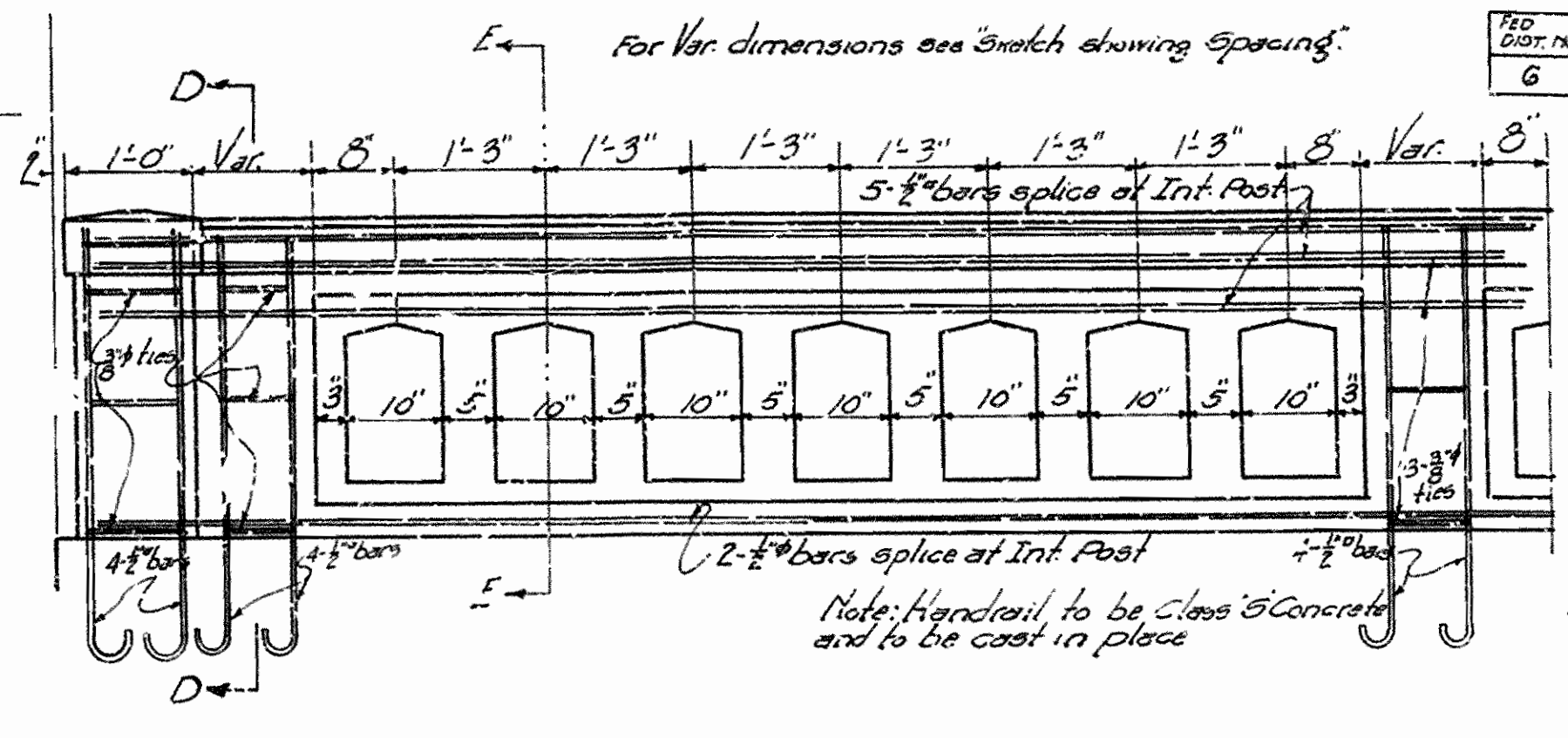
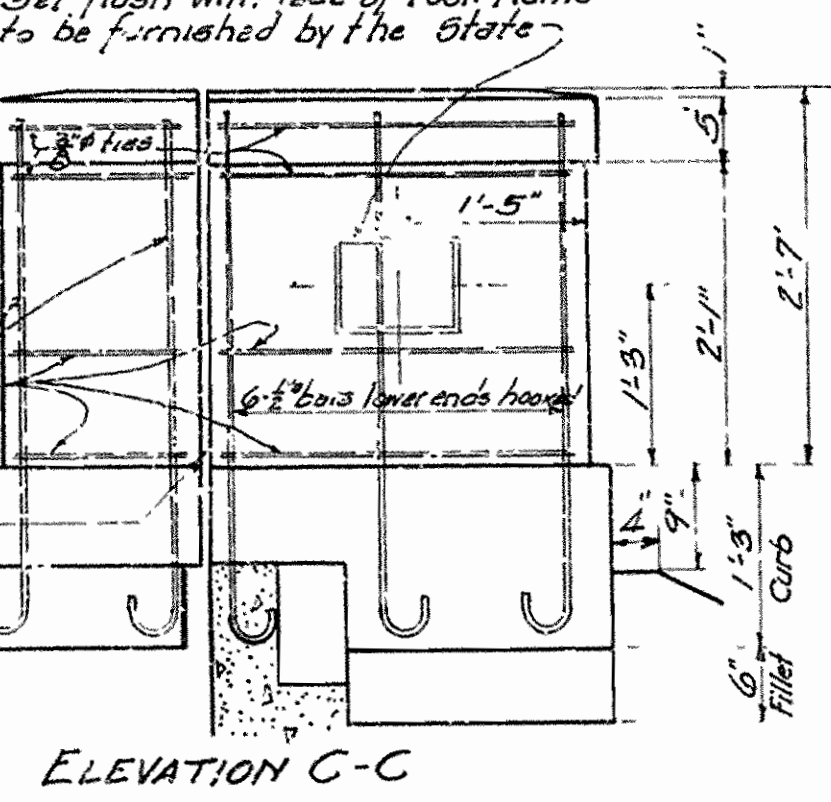
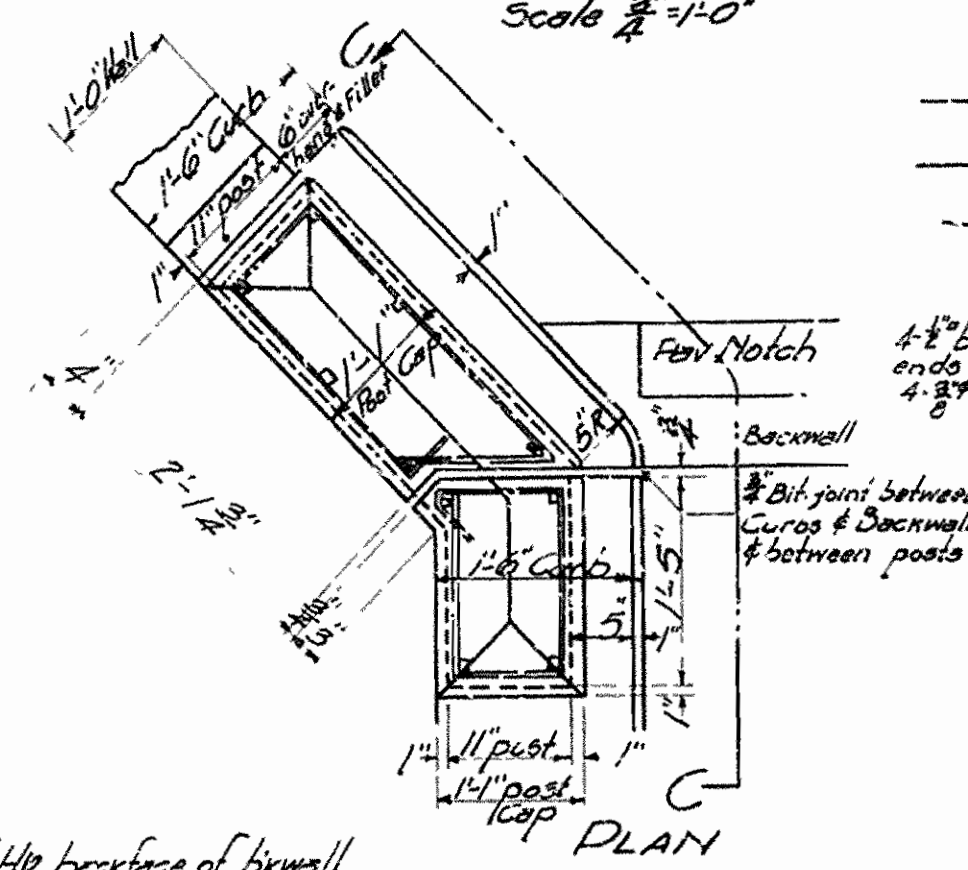
DRAWING No. 2572

FISCAL YEAR	Job No.	SHEET	TOTAL SHEETS
1930	1-1009	3	9
FIG. NO.	STATE	FISCAL YEAR	SHEET NO.
6	ARK.	258-E	3

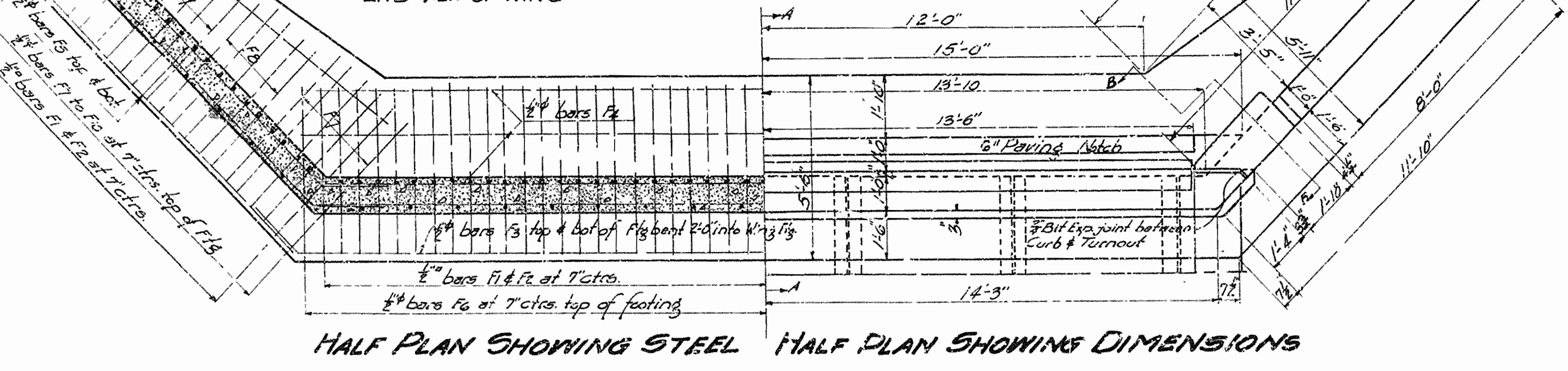
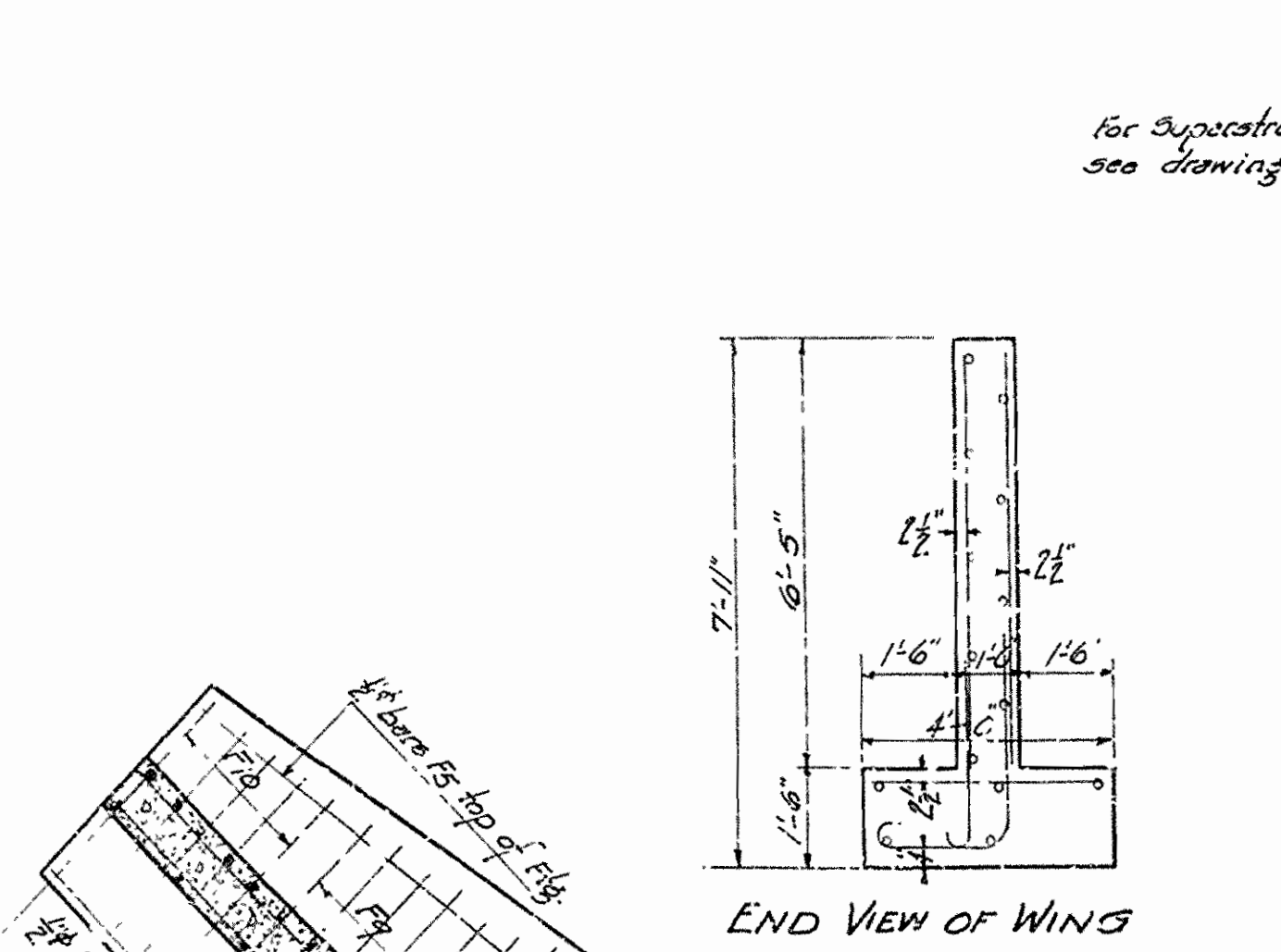
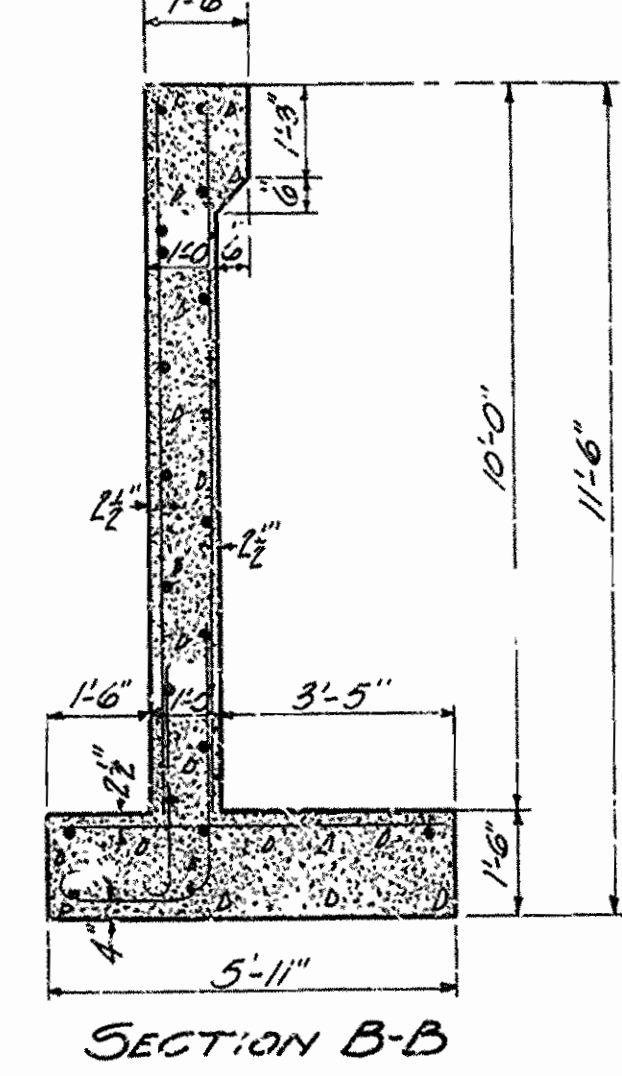
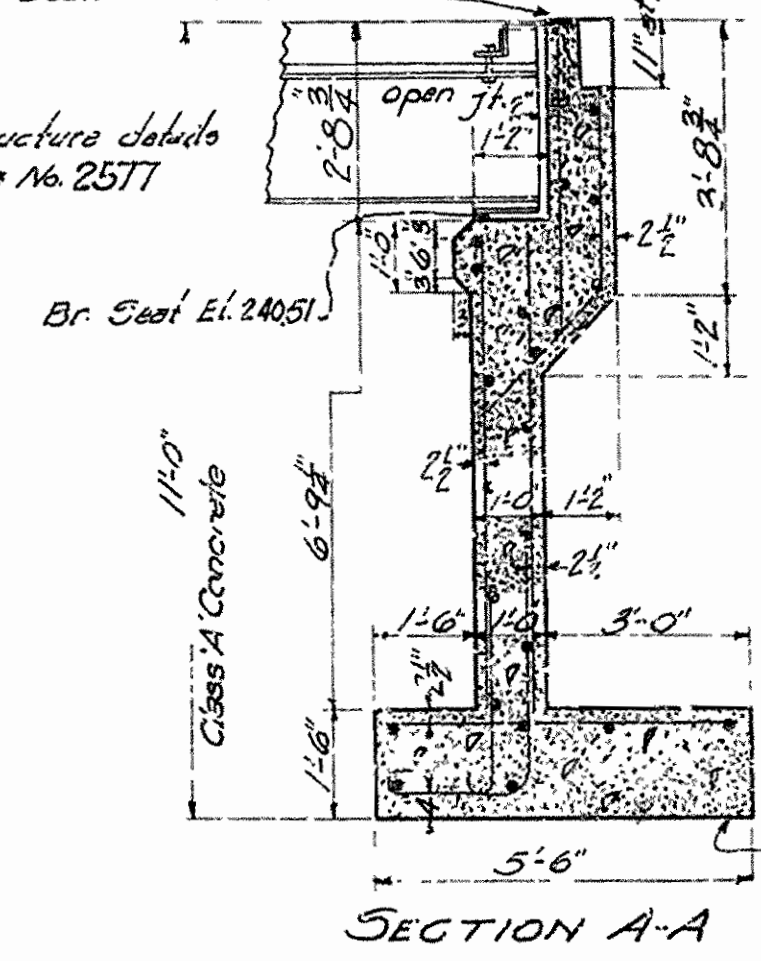
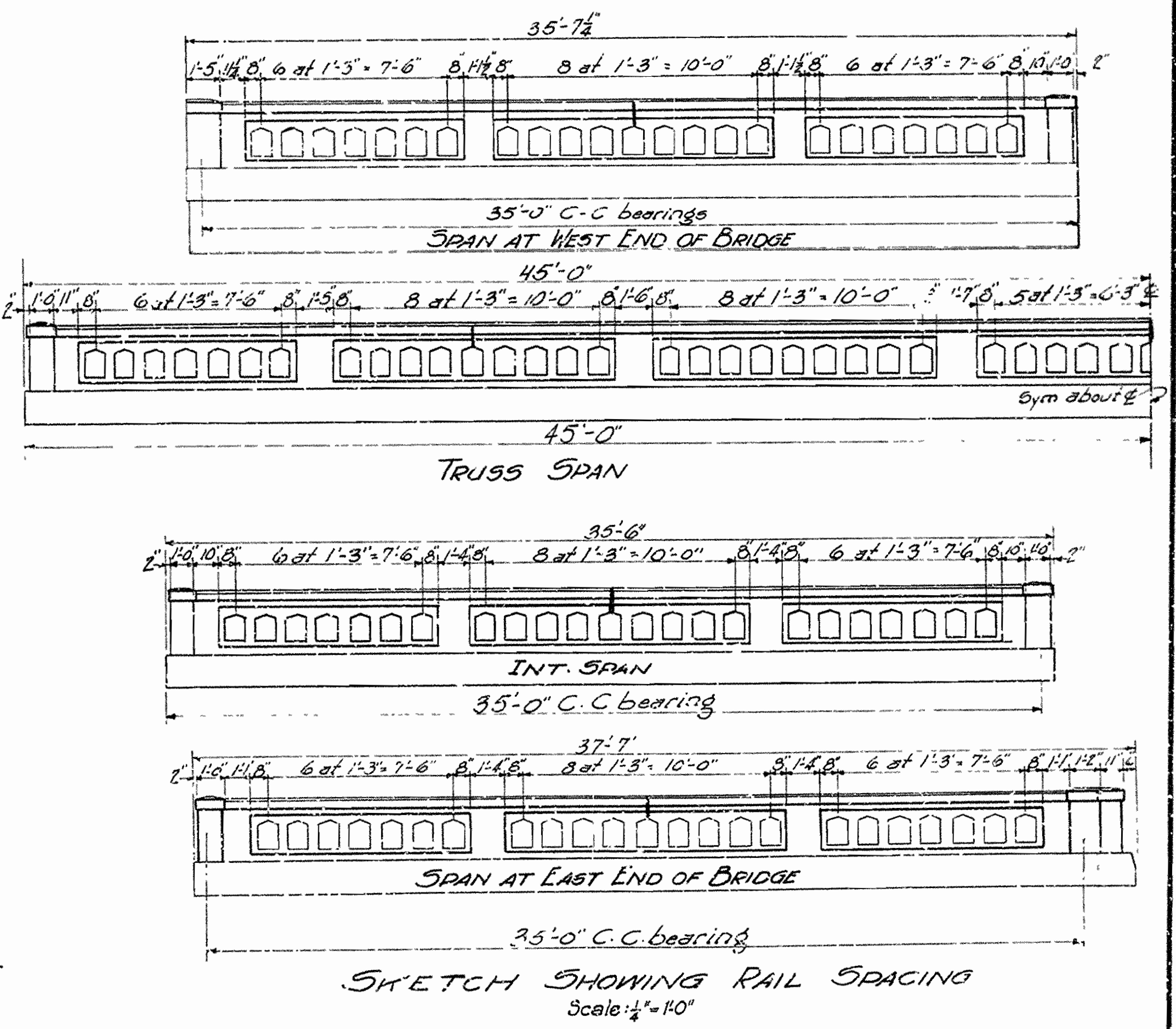
LIST OF BENT BARS

Mark	Size	No	a	b	Length	Bending Diagram
F1	1/2"	43	2'-1"	3'-2"	5'-0"	
F2	1/2"	14	2'-1"	5'-5"	7'-9"	
F3	1/2"	2	2'-0"	29'-3"	33'-3"	
F11	1/2"	36	3'-2"	3'-5"		
V18	1/2"	23	2'-5"	2'-4"	5'-0"	
V19	1/2"	2	4'-2"	2'-5"	6'-6"	
H2	1/2"	6	2'-0"	11'-3"	13'-3"	
H3	1/2"	2	2'-0"	10'-0"	12'-0"	
H4	1/2"	2	2'-0"	8'-5"	10'-7"	
H5	1/2"	2	2'-0"	11'-5"	13'-6"	
H7	1/2"	2	2'-0"	4'-0"	6'-0"	
H8	1/2"	2	11'-6"	28'-6"	51'-6"	
H9	1/2"	2	2'-0"	8'-0"	10'-0"	
H10	1/2"	2	2'-0"	3'-0"	5'-0"	

TURNOUT DETAILS
Scale 1/4" = 1'-0"



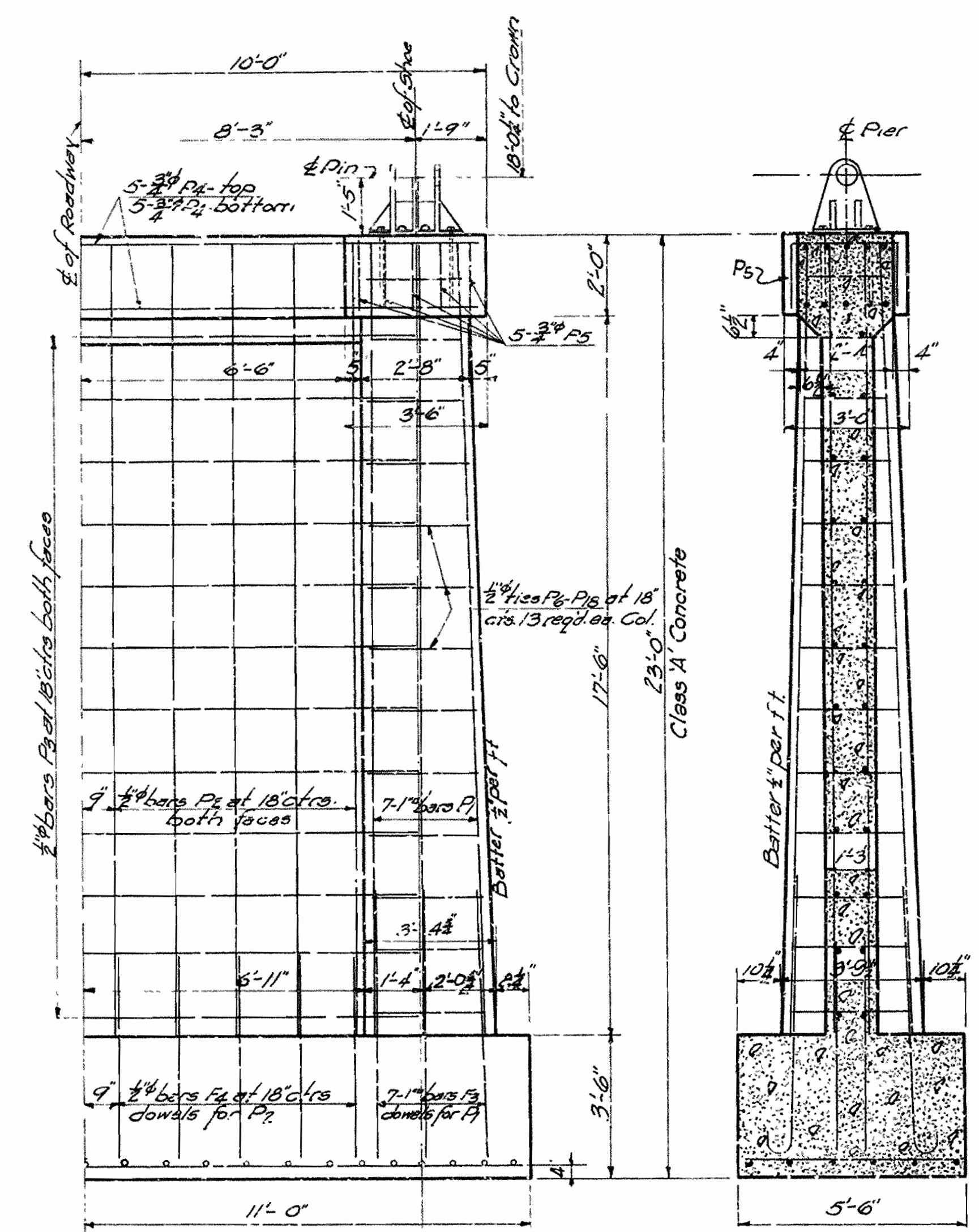
DETAILS OF HANDRAIL



DETAILS OF ABUTMENT AND HANDRAIL DETAILS
BRIDGE OVER CROW CREEK
FORREST CITY - WEST MEMPHIS ROAD
ST. FRANCIS COUNTY
ROUTE 70 SEC. 19

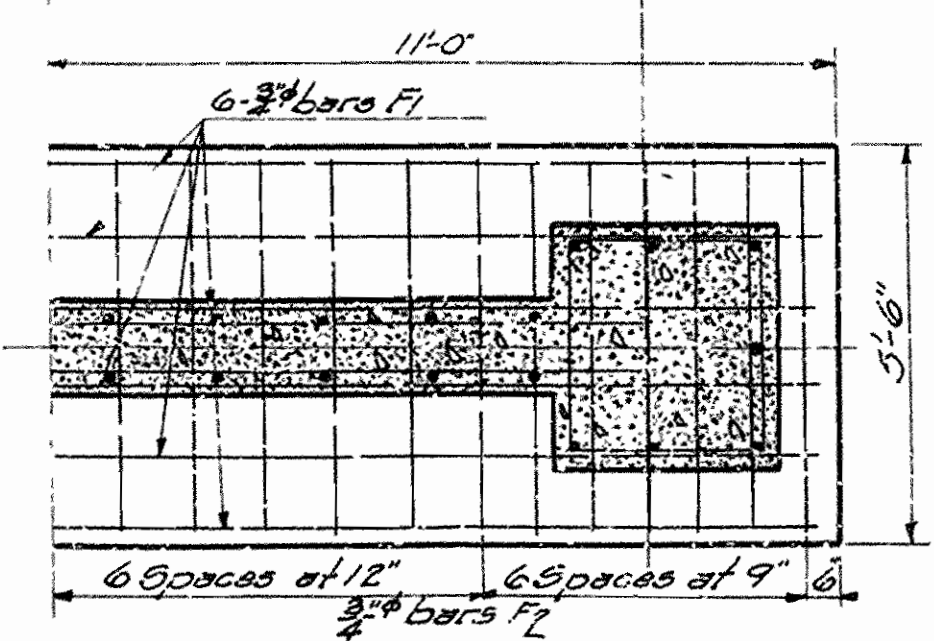
ARKANSAS STATE HIGHWAY COMMISSION
LITTLE ROCK, ARK.
Drawn By: E.A.H. Date: 1-15-30
Traced By: J.G.W. Date: 2-19-30
Checked By: Date: _____
Scale: 1/8" = 1'-0" except as noted
BRIDGE ENGINEER
BRIDGE NO. 1472 DRAWING NO. 2574

FISCAL YEAR	Job No.	SHEET	TOTAL SHEETS
1930	1-1009	4	9
FED. DIST. No.	STATE	FED. AID PROJ. No.	FISCAL YEAR
6	ARK.	253-E	1930
SHEET No.	TOTAL SHEETS		
4	9		



HALF ELEVATION PIER NO. 1

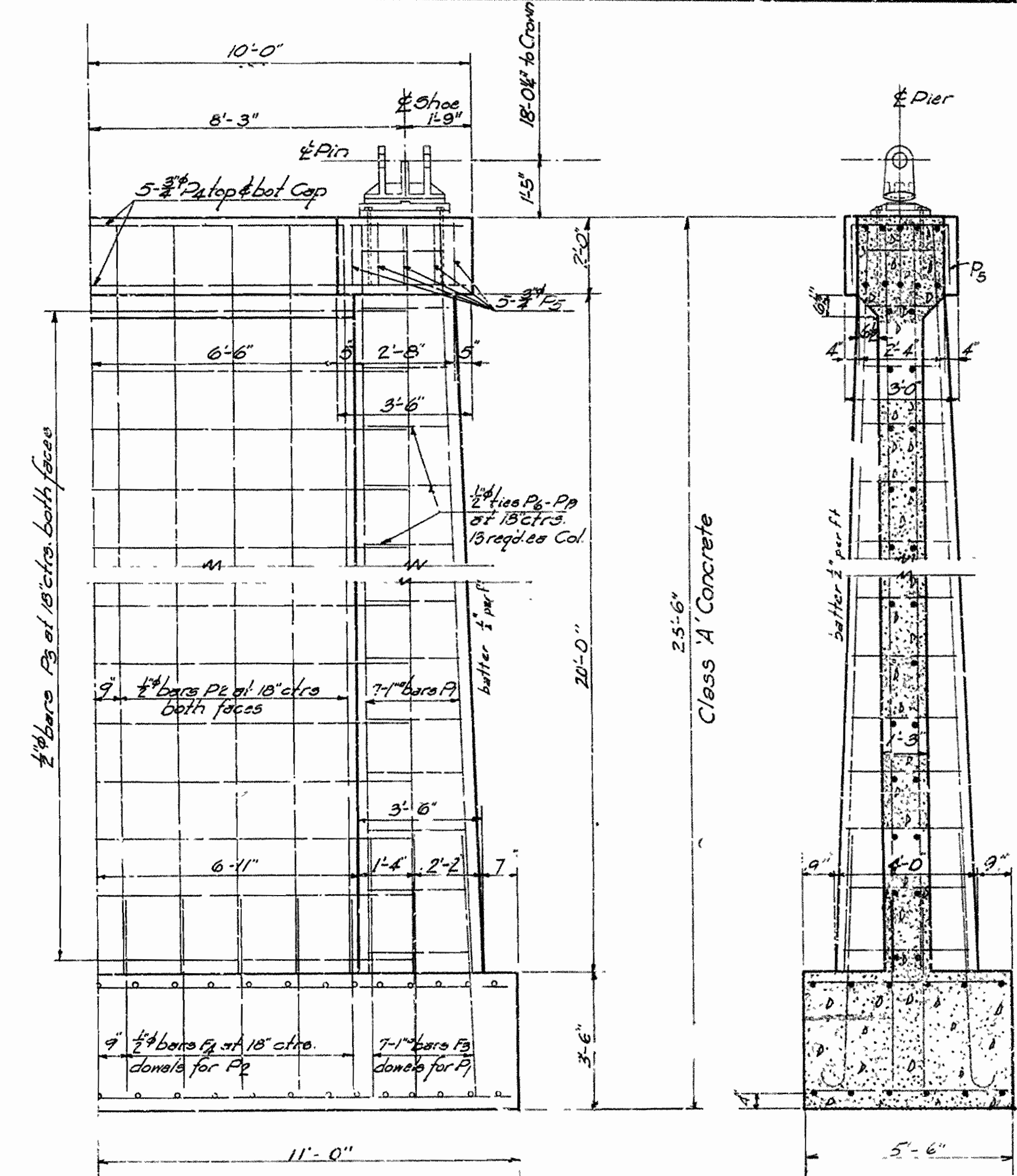
SEC. ON ϕ PIER NO. 1



HALF PLAN OF FTG. PIER NO. 1

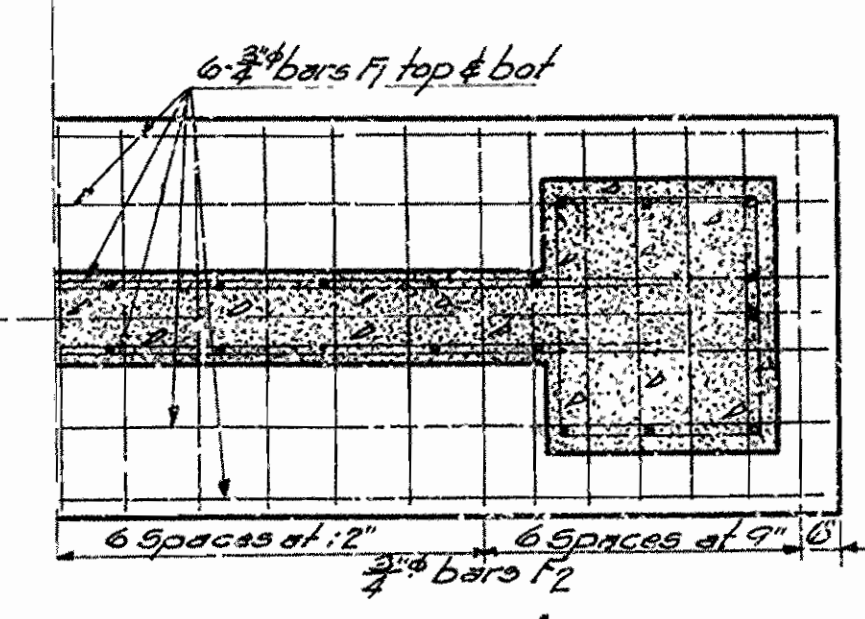
LIST OF BENT BARS PIER NO. 1 & 2

Mark	Size	No. of bars	Length	Diagram
P1	1"	14	7'-6"	
P2	3/4"	10	5'-6"	
P3	1/4"	20 Piers	11'-2" Ave.	
P4	3/4"	30 Piers	11'-7" Ave.	



HALF ELEVATION PIER NO. 2

SEC. ON ϕ



HALF PLAN OF FTG. PIER NO. 2

DETAILS OF
PIERS NOS. 1 AND 2
BRIDGE OVER CROW CREEK
FORREST CITY-WEST MEMPHIS ROAD
ST. FRANCIS COUNTY

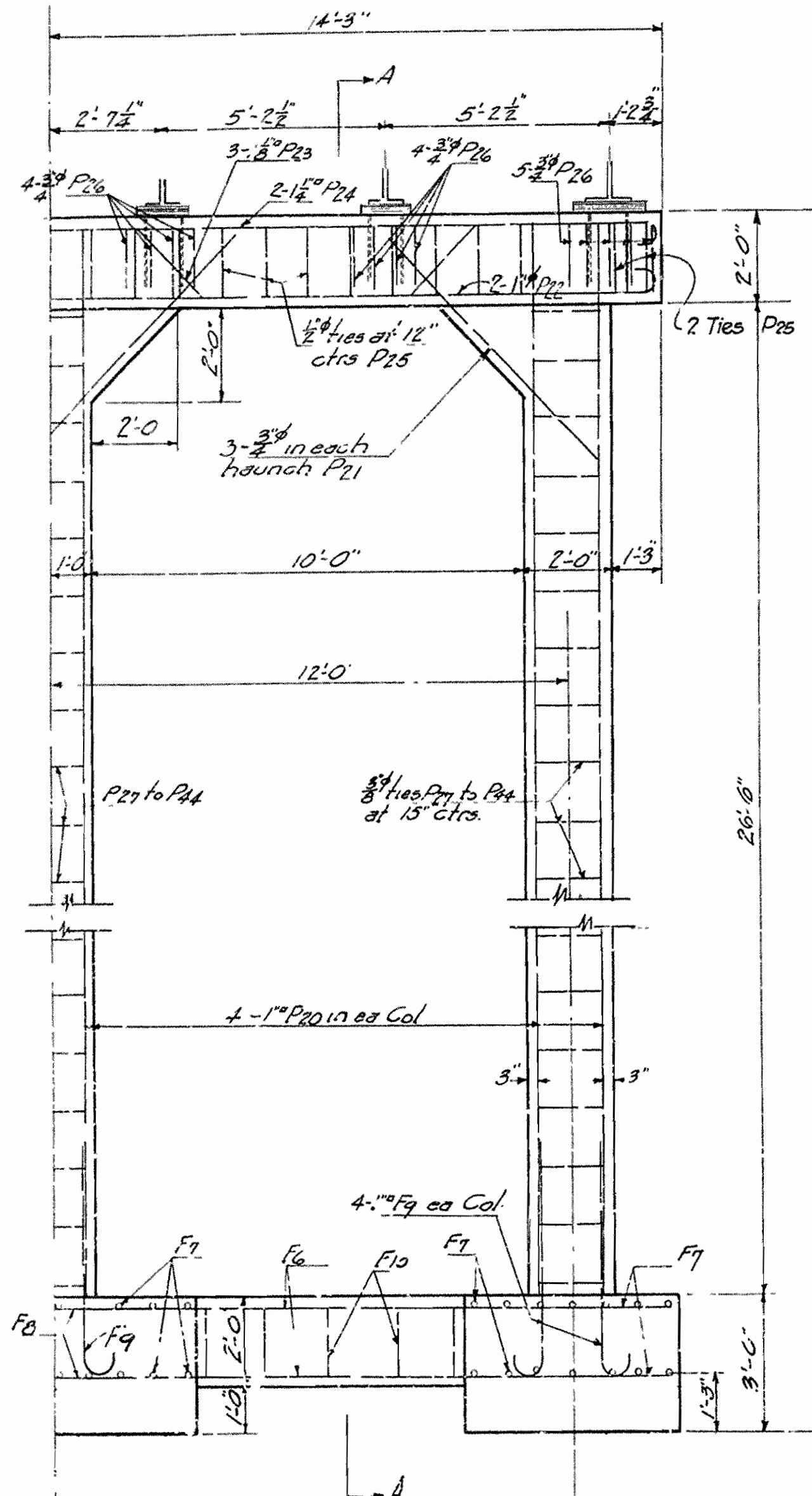
ROUTE 70 SEC. 19
ARKANSAS STATE HIGHWAY COMMISSION
LITTLE ROCK, ARK.
Drawn By: E.A.W. Date: 3-17-30
Traced By: E.A.W. Date: 3-22-50
Checked By: _____ Date: _____
Scale: 3/8" = 1'-0"
BRIDGE NO. 1472 DRAWING NO. 2575

6-30-30
Correct Dimensions.
F.M.M.

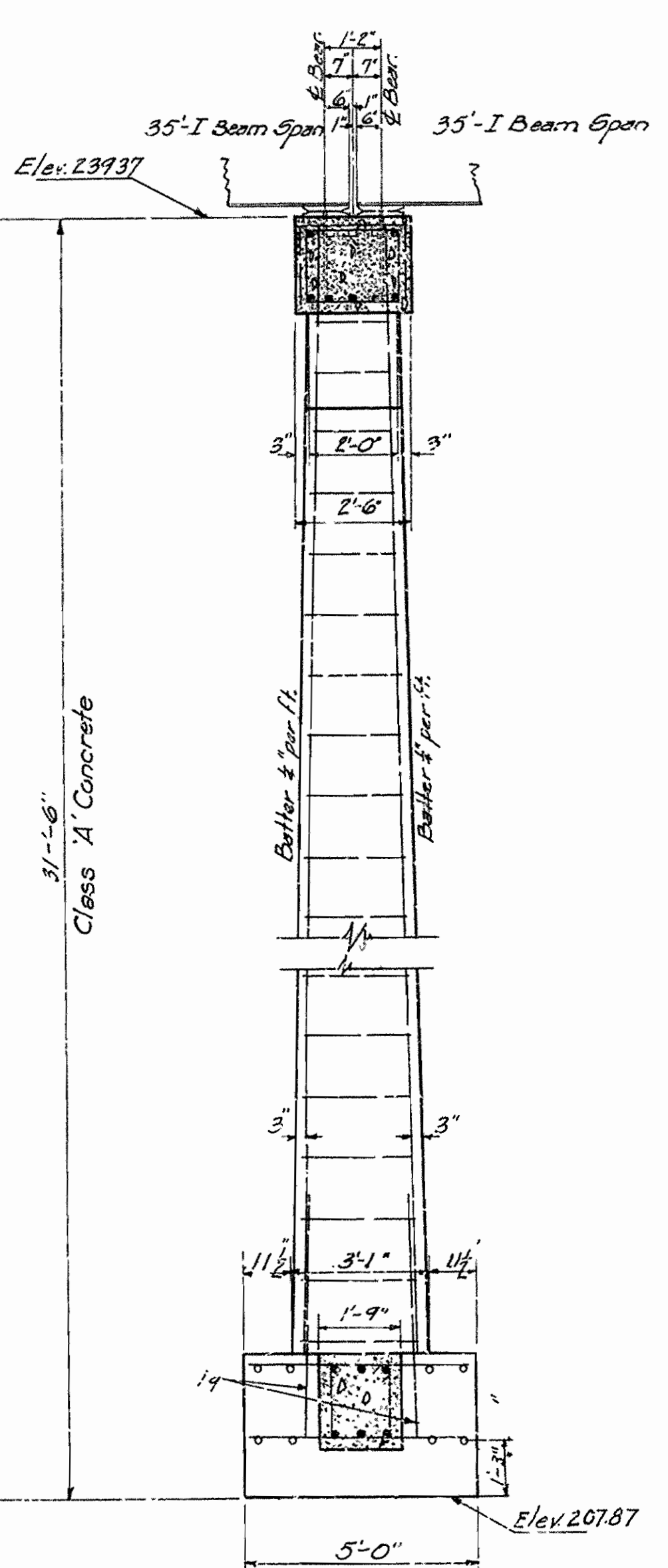
M.R. Garrow
BRIDGE ENGINEER

FISCAL YEAR	Job No.	SHEET No.	TOTAL SHEETS
1930	1-1009	5	9

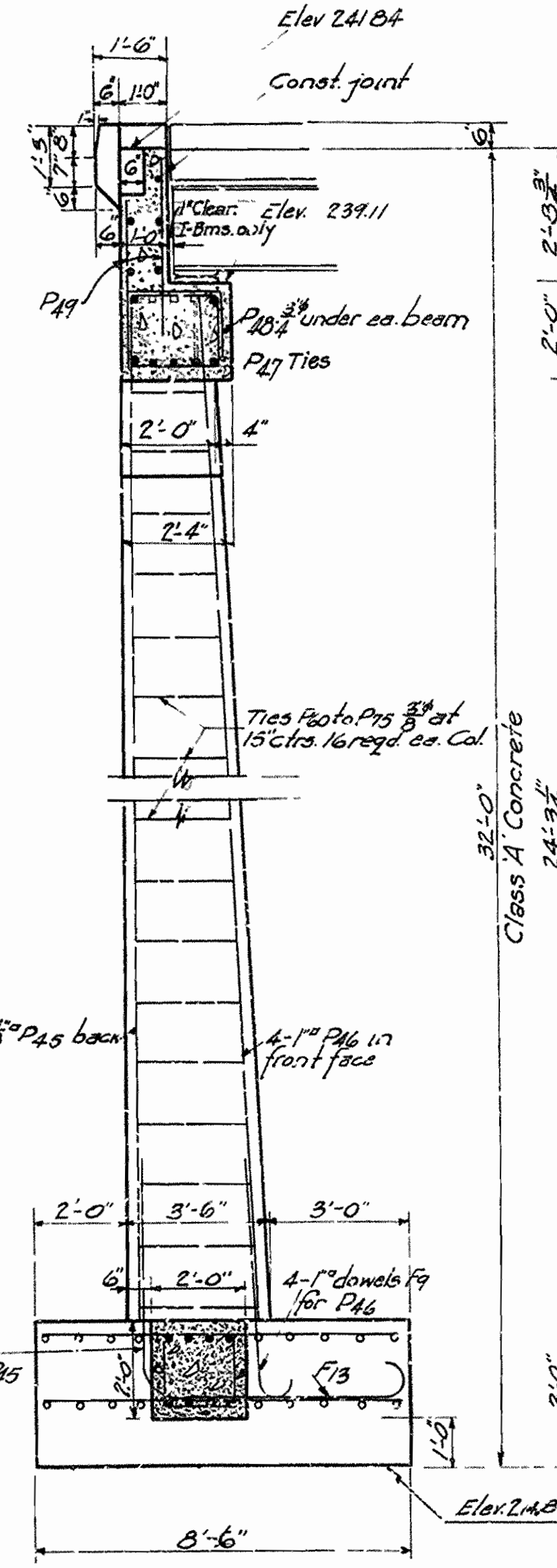
FED. DIST. NO.	STATE	FED. AID PROJ. NO.	FISCAL YEAR	SHEET NO.	TOTAL SHEETS
6	ARK.	253-E	1930	5	9



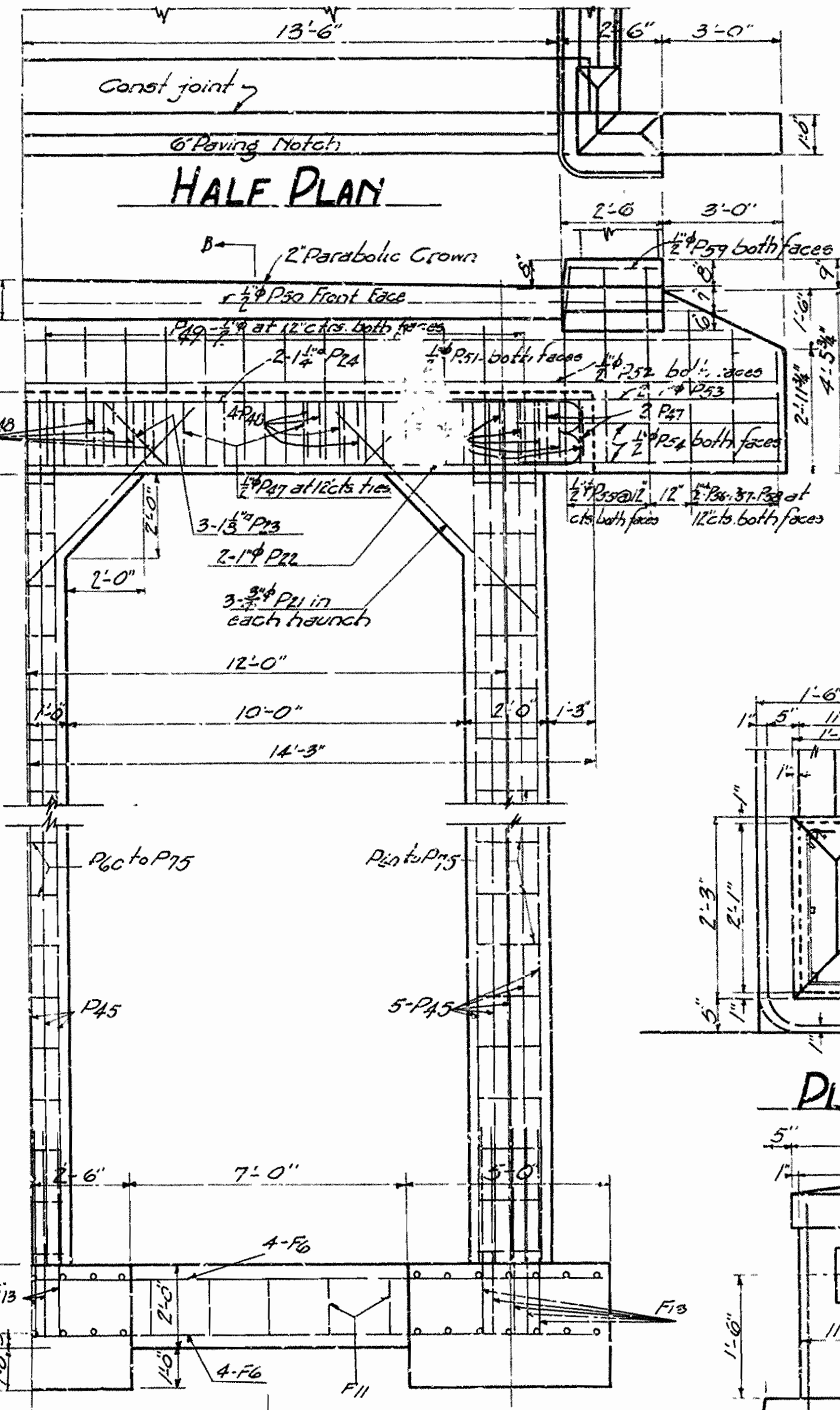
HALF ELEV. INT. BENT



SEC. A-A INT. BENT

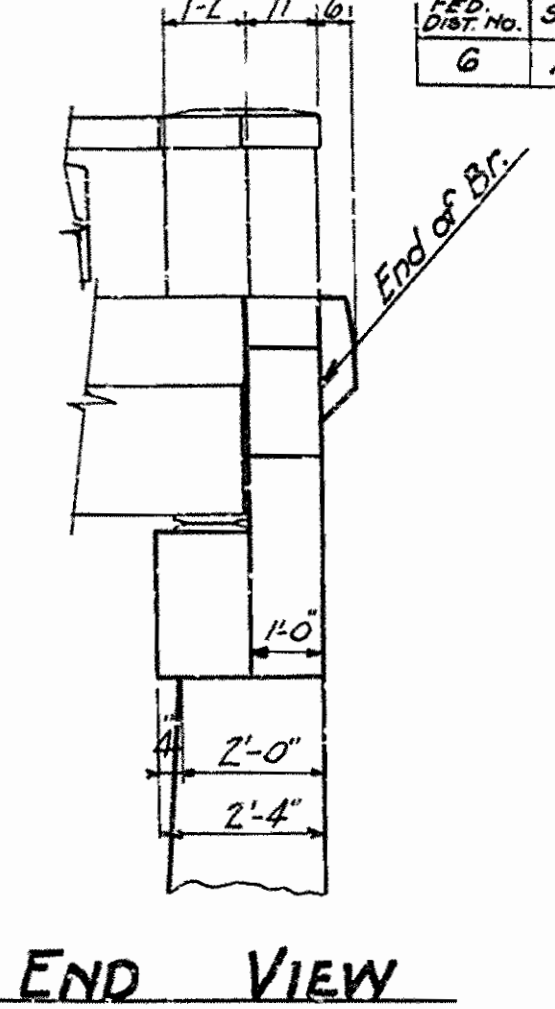


SECTION B-B

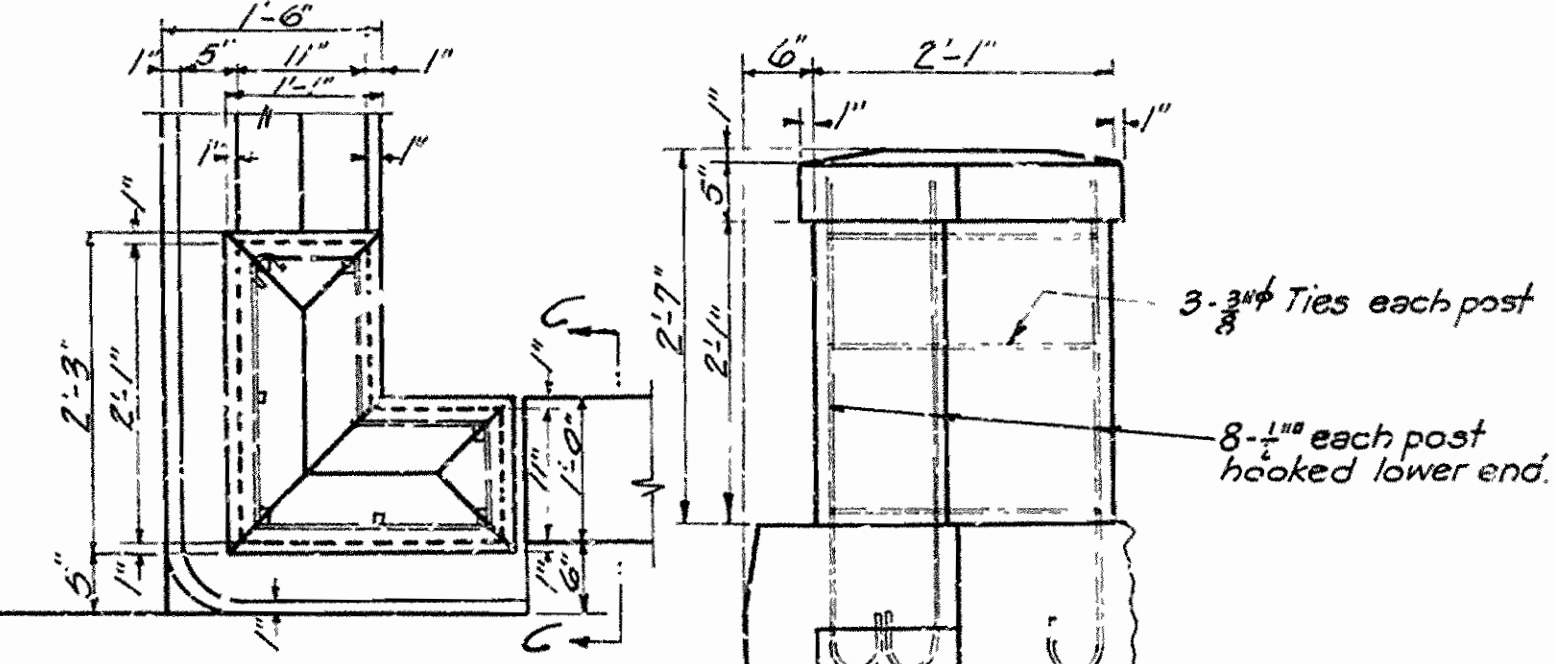


HALF REAR ELEVATION

HALF SECTION AT TOP OF FOOTING



END VIEW



PLAN

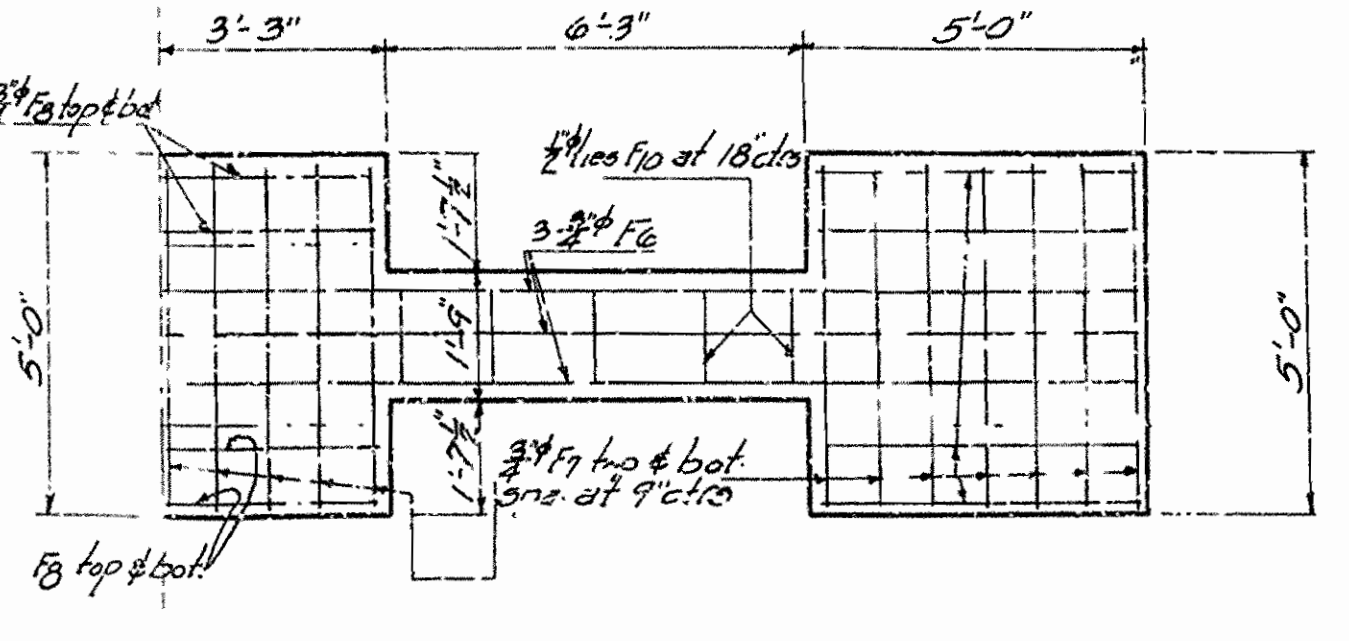
ELEVATION

SEC. C-C

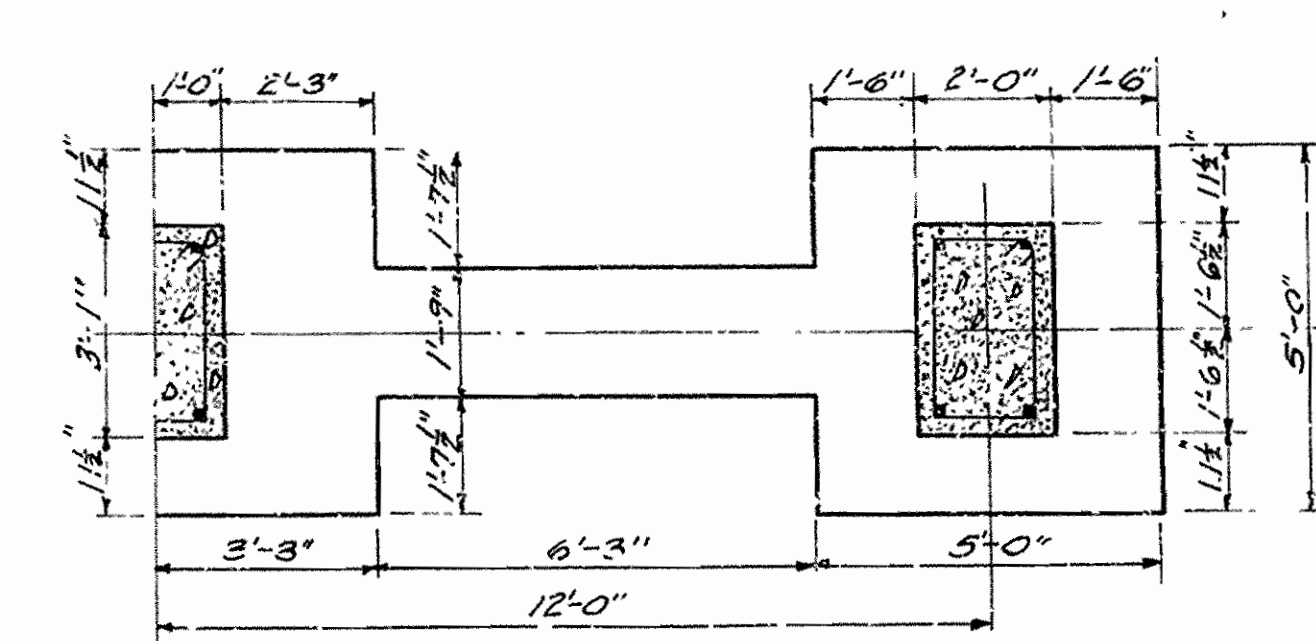
Place Std Nameplate on Roadway Side of Right hand Turnout only. Plate set flush with face of Post. Name plate are to be furnished by State.

TURNOUT DETAILS

Scale 3/4" = 1'-0"



FOOTING PLAN SHOWING REINSTEEL



FOOTING PLAN

List of Bent Bars Int. Bent

Mark	Size	No.	Length
F9	1"	0	6'-3"
F10	1/2"	10	6'-6"
P21	3/8"	63	8'-2"
P25	3/8"	22	8'-0"
P26	3/8"	26	5'-2"
P22	1/2"	2	30'-3"
P24	1/2"	2	30'-3"
P23	1/2"	3	32'-4"

List of Bent Bars End Bent

Mark	Size	No.	Length
F13	1/8"	15	11'-10"
F9	1"	12	6'-3"
F11	7/8"	10	7'-0"
P27	"	27	7'-8"
P28	3/8"	26	5'-0"
P29	3/8"	48	8'-8"
P21	1/2"	"	30'-3"
P22	1/2"	"	30'-3"
P23	1/2"	3	32'-4"

DETAILS OF INTERMEDIATE END BENTS
 BRIDGE OVER CROW CREEK
 FORREST CITY - WEST MEMPHIS ROAD
 ST. FRANCIS COUNTY
 ROUTE 70 SEC. 19

ARKANSAS STATE HIGHWAY COMMISSION
 LITTLE ROCK, ARK.
 Drawn By: E.A.M. Date: 3-2-30
 Traced By: G.A. Date: 3-25-30
 Checked By: Date:
 BRIDGE No. 1472 DRAWING No. 2576

W.B. Spurr
 BRIDGE ENGINEER

FISCAL YEAR	SHEET NO.	TOTAL SHEETS

