

EMERGENCY

| FED. DIST. NO. | STATE | FED. AID PROJ. NO. | FISCAL YEAR | SHEET NO. | TOTAL SHEETS |
|----------------|-------|--------------------|-------------|-----------|--------------|
| 6              | ARK.  | 280-A              | 1930        | 1         | 15           |

| FISCAL YEAR | JOB NO. | SHEET NO. | TOTAL SHEETS |
|-------------|---------|-----------|--------------|
| 1930        | 9103    | 1         | 15           |

STATE OF ARKANSAS  
STATE HIGHWAY COMMISSION

**PLAN OF PROPOSED BRIDGE**  
OVER  
**LONG CREEK**  
BOONE COUNTY

**INDEX OF SHEETS**

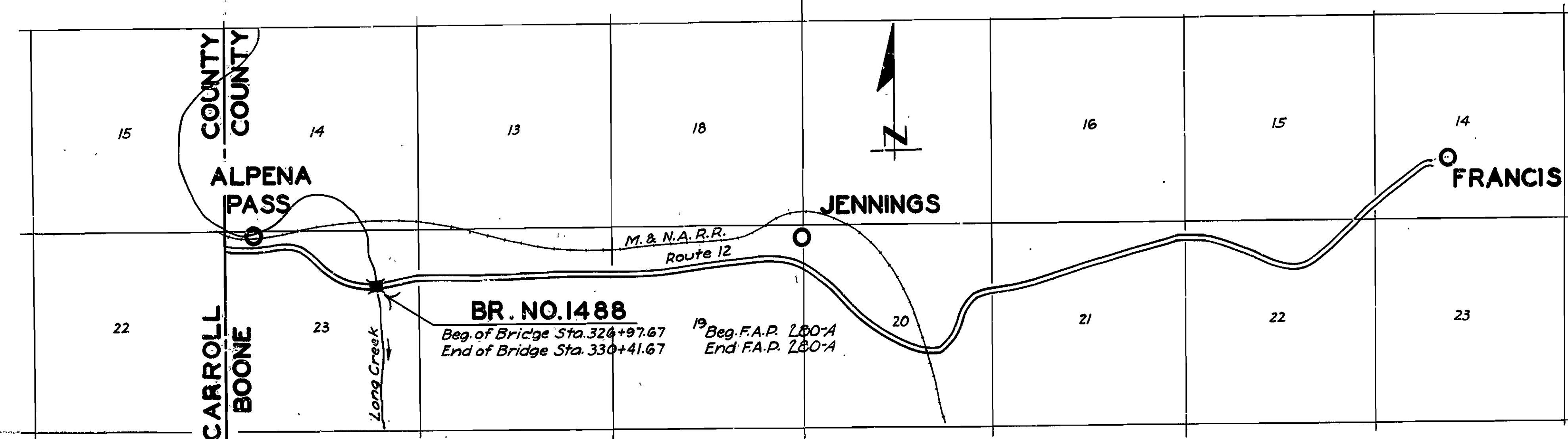
| Sheet No. | Drwg No. | Title                             |
|-----------|----------|-----------------------------------|
| 1         | 3042     | Title Sheet                       |
| 2         | 3043     | Plan and Profile of Approaches    |
| 3         | 3044     | Layout of Bridge                  |
| 4         | WS3      | Widening and Superelevation Chart |
| 5         | WS3-A    | Widening and Superelevation Chart |
| 6         | 3045     | Piers 1,2 and 3                   |
| 7         | 3046     | Piers 4,5 and Abutments.          |
| 8         | 2416     | 30'-0" Low Pony Truss             |
| 9         | 2277     | 40'-0" R.C.D. Girder Span         |
| 10-15     |          | Cross Section Sheets              |

**QUANTITIES**

| S.P. & Item No. | Description                          | Quantity | Unit        |
|-----------------|--------------------------------------|----------|-------------|
| 12*             | Common Excavation                    | 21,476   | Cu. Yds.    |
| 12*             | Solid Rock Excavation                | 2,306    | " "         |
| 13              | Dry Excavation for Structures        | 206      | " "         |
| 13              | Wet Excavation for Structures        | 361      | " "         |
| 13              | Solid Rock Excavation for Structures | 215      | " "         |
| 54              | Class "A" Concrete                   | 331.4    | " "         |
| 54              | Class "S" Concrete                   | 293.9    | " "         |
| 55              | Reinforcing Steel                    | 104,276  | Lbs.        |
| 56              | Structural Steel (Trusses)           | 160,750  | " "         |
| 69              | Rip Rap (1'-0" thick)                | 260      | Cu. Yds.    |
| 74              | Concrete Railing for Structures      | 336      | Lin. Ft.    |
| 19*             | Overhaul                             | 7474     | Station yds |

\* denotes that item is non-participating in Federal Aid. Federal Aid Markers of approved design are to be furnished by State, and are to be placed at beginning and end of bridge.

ROUTE 12 SEC. 7  
JOB No 9103  
EMERGENCY FEDERAL AID PROJECT NO. 280-A



Specifications approved by Chief, Bureau of Public Roads, September 28, 1925, and adopted by State Highway Commission May 30, 1925 with revisions and Special Provisions as follows:

**REVISIONS**

| Pamphlet | Revised | Date            | Approved                 |
|----------|---------|-----------------|--------------------------|
| A        | Revised | Sept. 1st, 1928 | Approved June 1st, 1929  |
| B        | Revised | Nov. 1st, 1929  |                          |
| C        | "       | July 1st, 1930  |                          |
| D        | Revised | July 1st, 1928  | Approved Nov. 24th, 1928 |
| E        | Revised | Jan. 1st, 1930  |                          |
| F        | Revised | Aug. 1st, 1929  |                          |
| G        | Revised | June 1st, 1929  |                          |
| H        | Revised | Jan. 1st, 1930  |                          |
| I        | "       | May 30th, 1925  |                          |
| J        | Revised | Jan. 1st, 1929  | Approved June 1st, 1929  |
| K        | "       | May 30th, 1925  |                          |
| L        | Revised | Jan. 1st, 1929  | Approved June 1st, 1929  |

**SPECIAL PROVISIONS**

| Item                   | No. of Sheets |
|------------------------|---------------|
| Pamphlet I             | 51            |
| Earth Excavation       | 3             |
| Concrete Aggregate     | 2             |
| Rip Rap                | 1             |
| Section 8.2            | 1             |
| Structural Steel       | 1             |
| Field Engineers Office | 1             |
| Aluminum Paint         | 1             |

**LAYOUT**  
Scale: 1"=2000'

|                      |                       |
|----------------------|-----------------------|
| LENGTH OF PROJECT    | = 344'-0" = 0.065 Mi. |
| LENGTH OF BRIDGES    | = 344'-0"             |
| LENGTH OF EMBANKMENT | = 1956'-0"            |
| LENGTH OF JOB        | = 2,300'-0"           |

APPROVED: [Signature]  
CHIEF ENGINEER - U. S. BUREAU OF PUBLIC ROADS

APPROVED: [Signature]  
DISTRICT ENGINEER - U. S. BUREAU OF PUBLIC ROADS

APPROVED: [Signature]  
CHIEF - U. S. BUREAU OF PUBLIC ROADS

APPROVED: [Signature]  
CHAIRMAN - STATE HIGHWAY COMMISSION

APPROVED: [Signature]  
STATE HIGHWAY ENGINEER

*W.B. Lawrence*  
BRIDGE ENGINEER

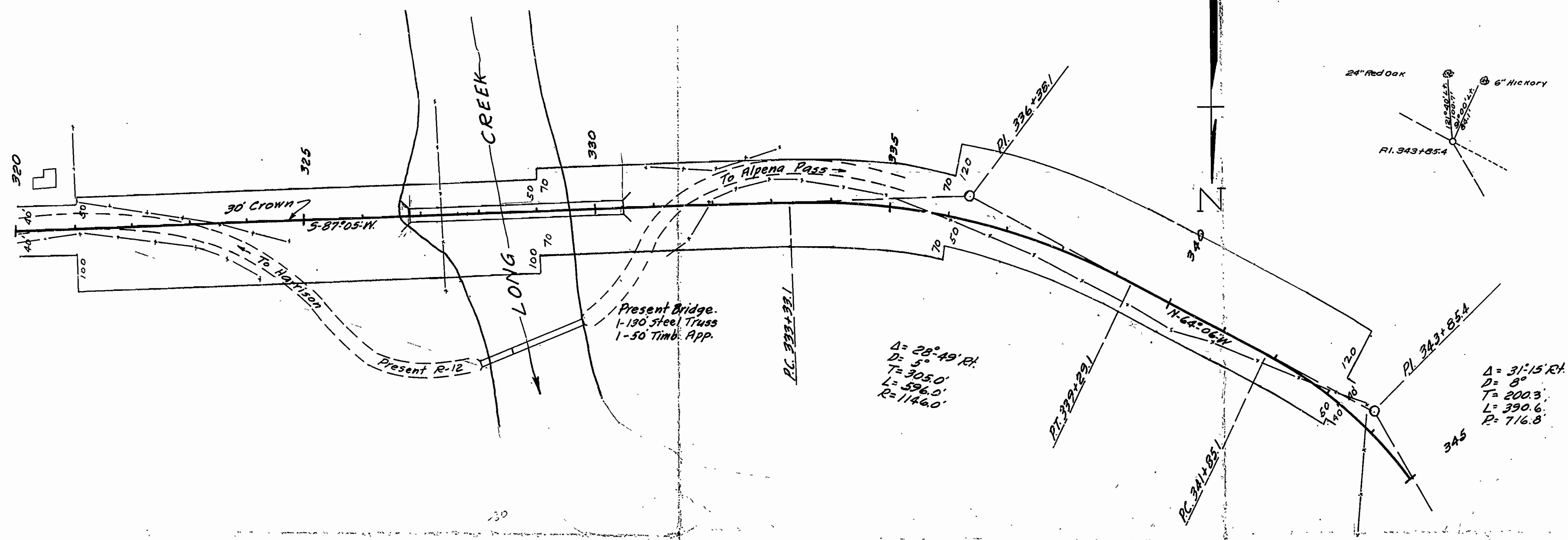
BRIDGES No. 1488

DRAWING No. 3042

5 - layout

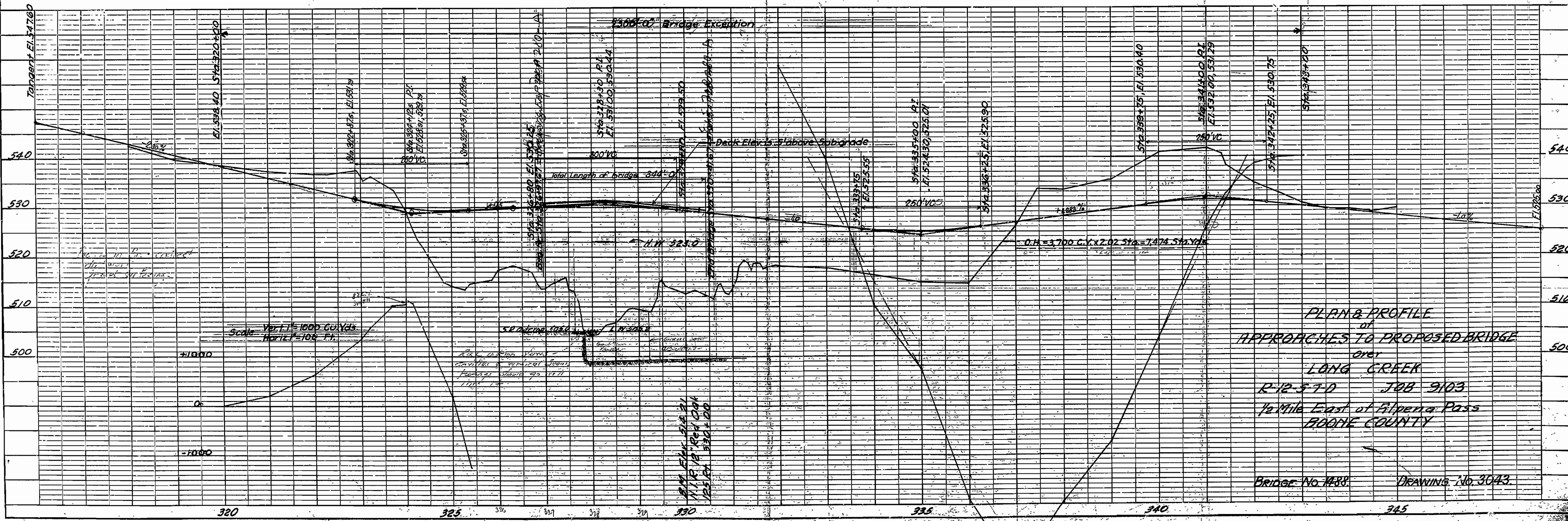
| FED. ROAD DIST. NO. | STATE | FED. AID PROJ. NO. | FED. AID FISC. YEAR | SHEET NO. | TOTAL SHEETS | DATE | JOB NO. | SHEET NO. | TOTAL SHEETS |
|---------------------|-------|--------------------|---------------------|-----------|--------------|------|---------|-----------|--------------|
| 6                   | ARK.  | 120-41             | 1930                | 2         | 15           | 1930 | 9103    | 2         | 15           |

| PLAN     | DATE |
|----------|------|
| DATE     |      |
| BY       |      |
| CHECKED  |      |
| APPROVED |      |



125-728

| PROFILE  | DATE |
|----------|------|
| DATE     |      |
| BY       |      |
| CHECKED  |      |
| APPROVED |      |



PLAN & PROFILE  
of  
APPROACHES TO PROPOSED BRIDGE  
over  
LONG CREEK  
R-12-37-D JOB 9103  
1/2 Mile East of Alpena Pass  
BOONE COUNTY

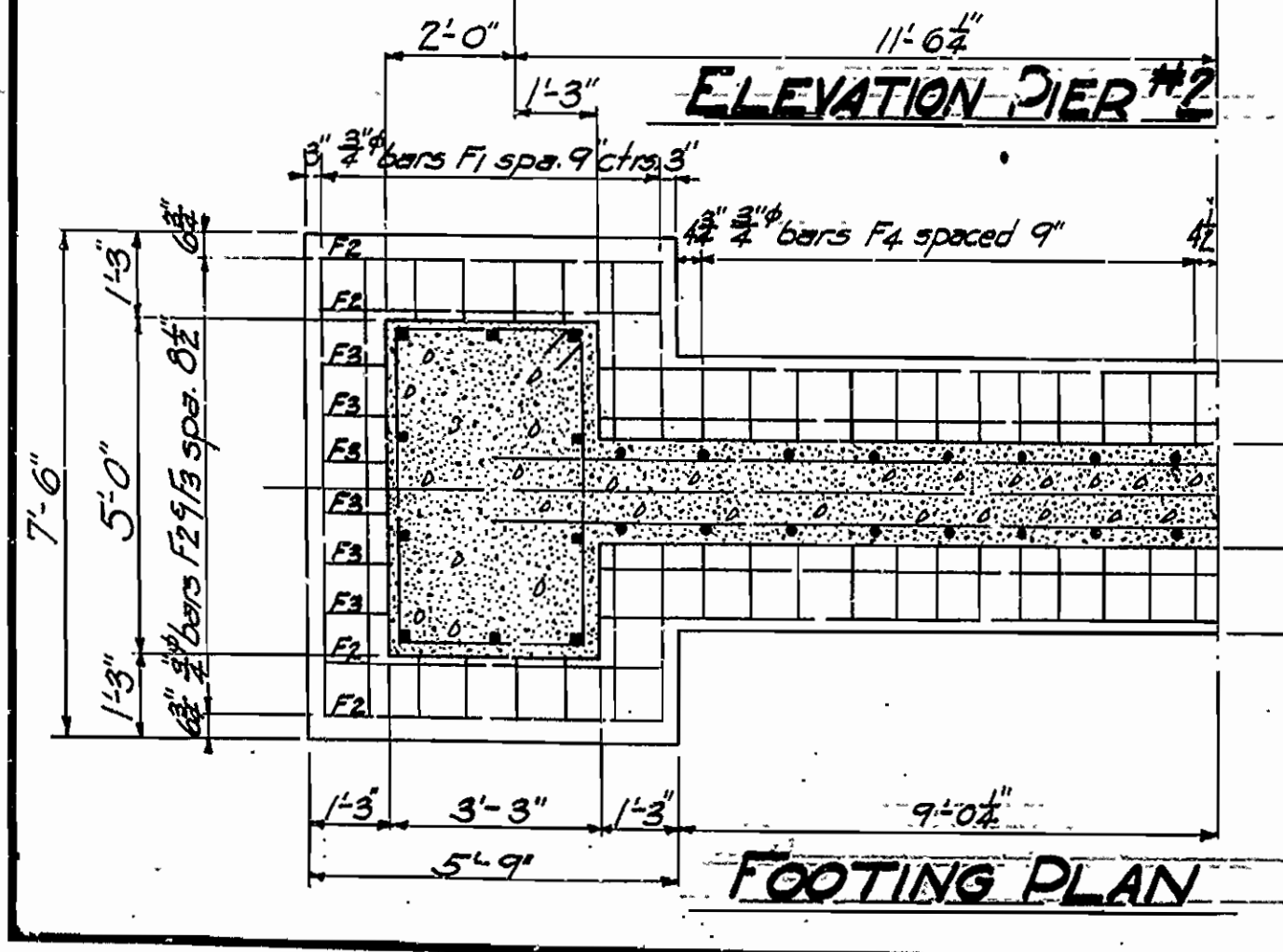
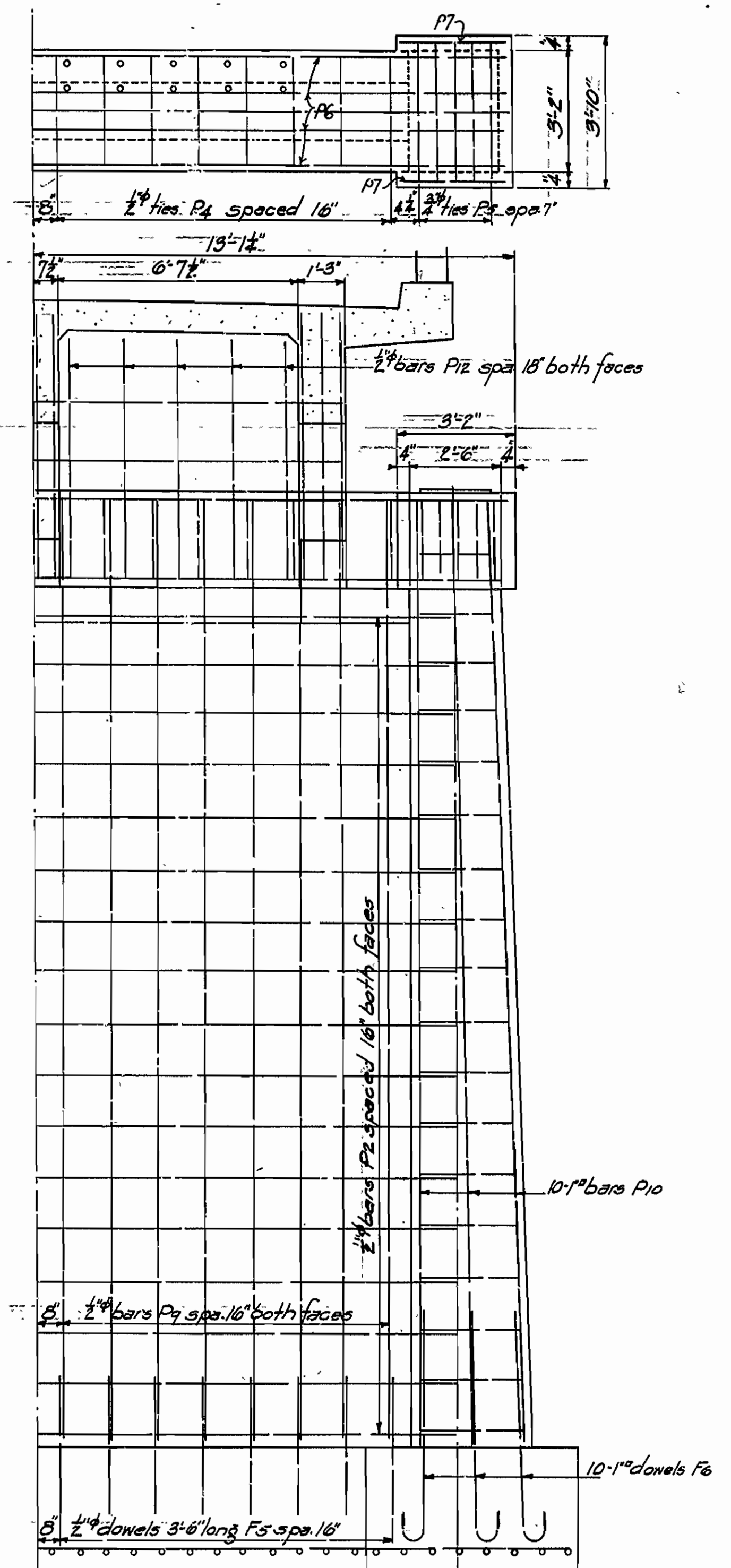
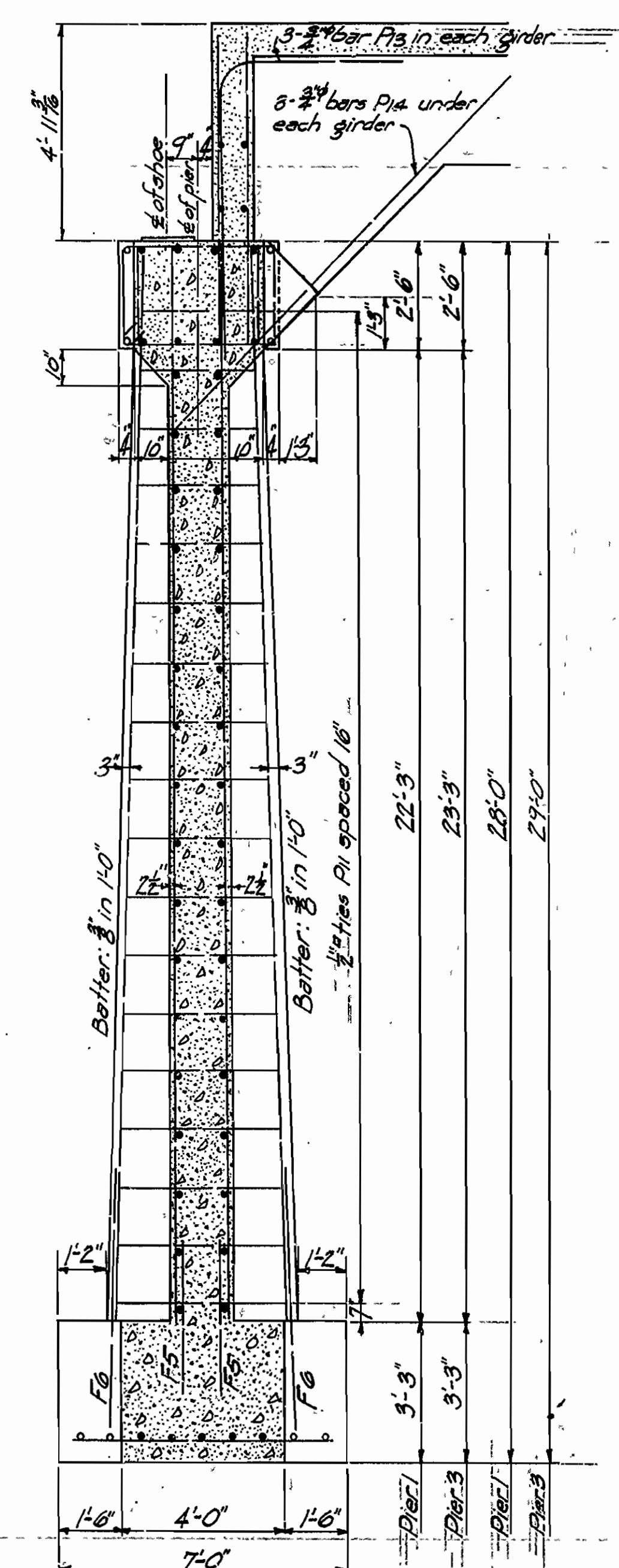
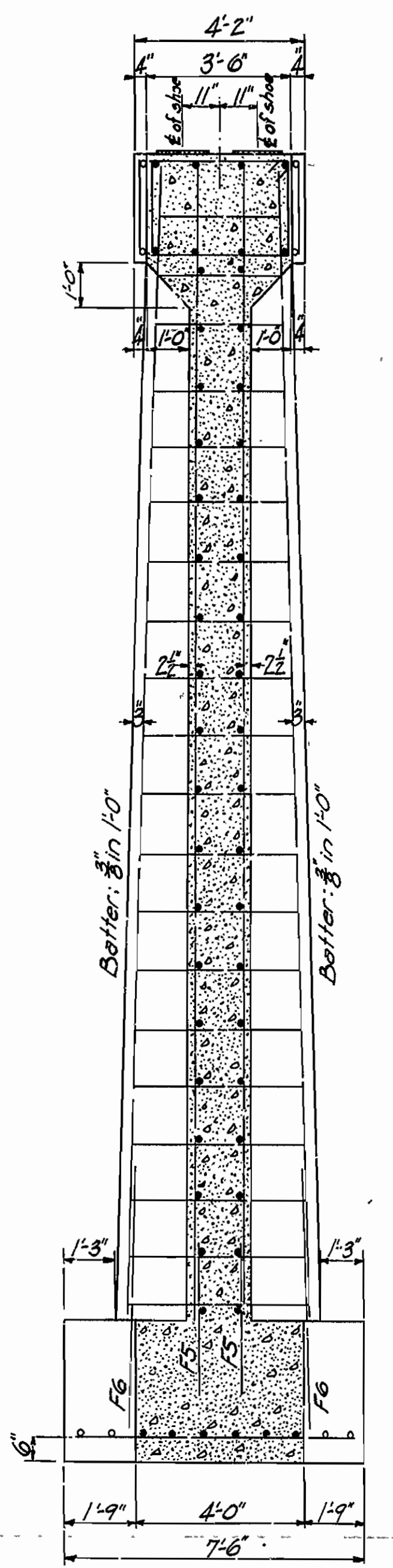
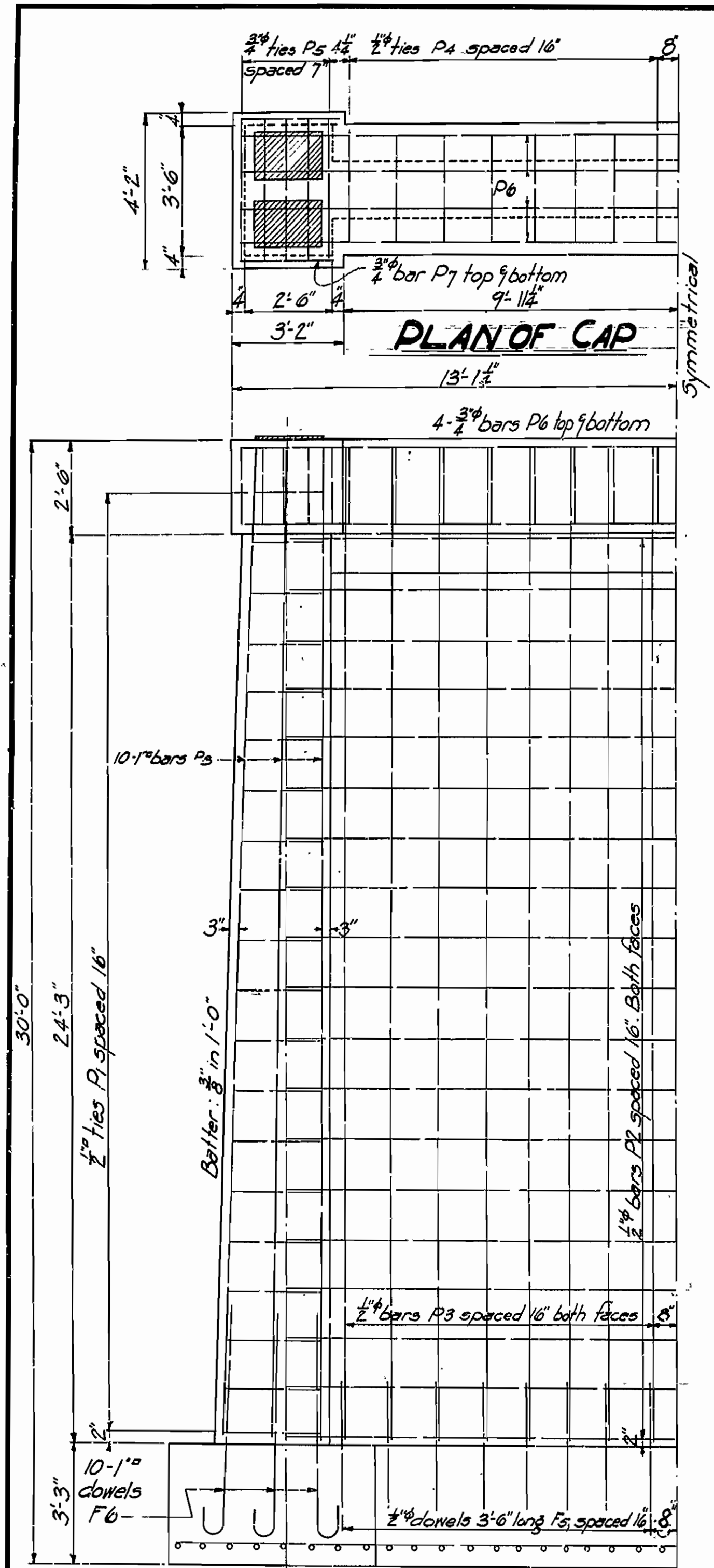
BRIDGE No. 1488 DRAWING No. 3043



|                     |       |                    |             |           |              |
|---------------------|-------|--------------------|-------------|-----------|--------------|
| FED. ROAD DIST. No. | STATE | FED. AID PROJ. No. | FISCAL YEAR | SHEET No. | TOTAL SHEETS |
| 6                   | ARK.  | 260-A              | 1930        | 6         | 15           |

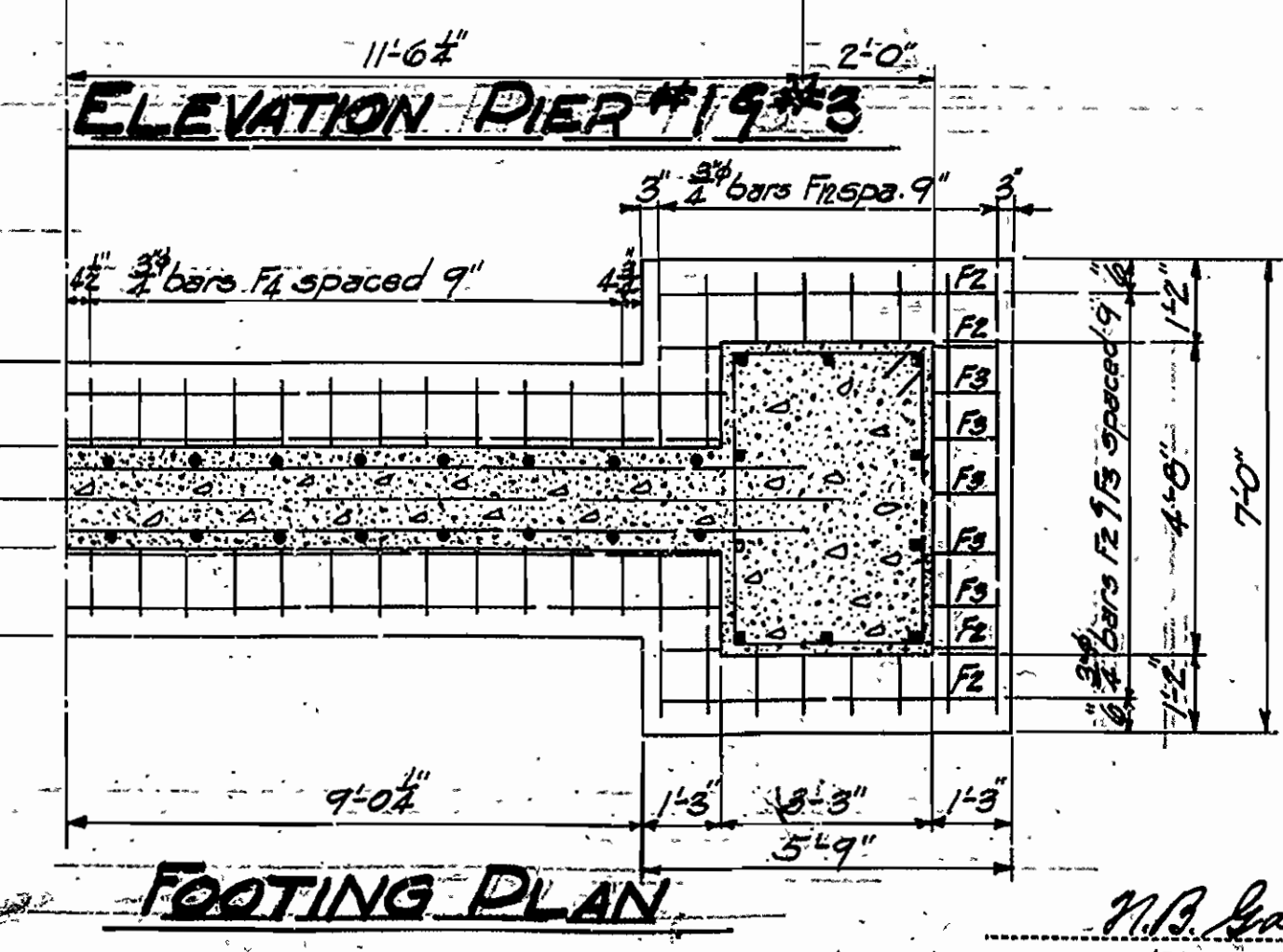
EMERGENCY 6

|             |         |           |              |
|-------------|---------|-----------|--------------|
| FISCAL YEAR | Job No. | SHEET No. | TOTAL SHEETS |
| 1930        | 9103    | 6         | 15           |



SECTION ON A

SECTION ON B



FOOTING PLAN

| Mark | Size | Length | Bending diagram  |
|------|------|--------|------------------|
| F6   | 1"   | 7'-0"  |                  |
| P1   | 1/2" | Varies | Varies           |
| P4   | 1/2" | 11'-4" | 3'-2" 2'-1 1/2"  |
| P5   | 3/4" | 12'-8" | 3'-10" 2'-1 1/2" |
| P11  | 1/2" | Varies | Varies           |
| P13  | 5/8" | 10'-7" |                  |

DETAILS OF PIERS 1-293  
BRIDGE OVER LONG CREEK  
BOONE COUNTY  
ROUTE 12, SEC. 7

ARKANSAS STATE HIGHWAY COMMISSION  
LITTLE ROCK, ARK.

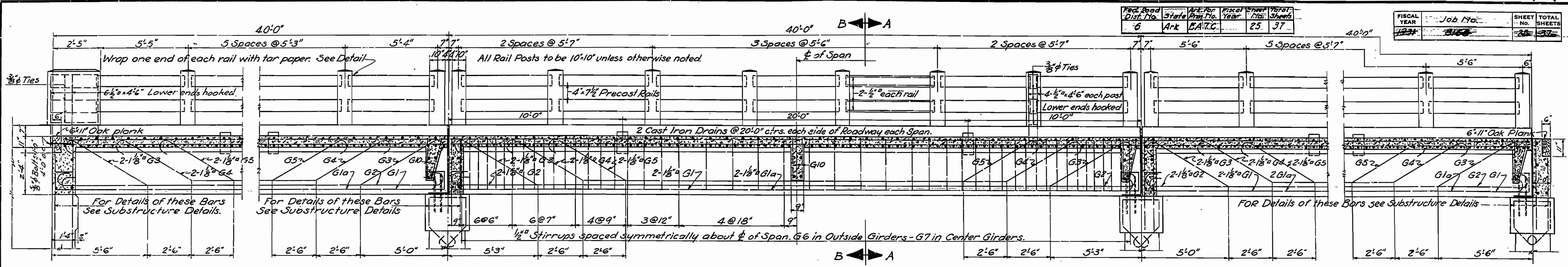
Drawn By: *RA* Date: *1-22-31*  
Traced By: *Wm* Date: *1-22-31*  
Checked By: \_\_\_\_\_ Date: \_\_\_\_\_  
BRIDGE NO. 1488 DRAWING NO. 3045

*W.A. Jones*  
BRIDGE ENGINEER

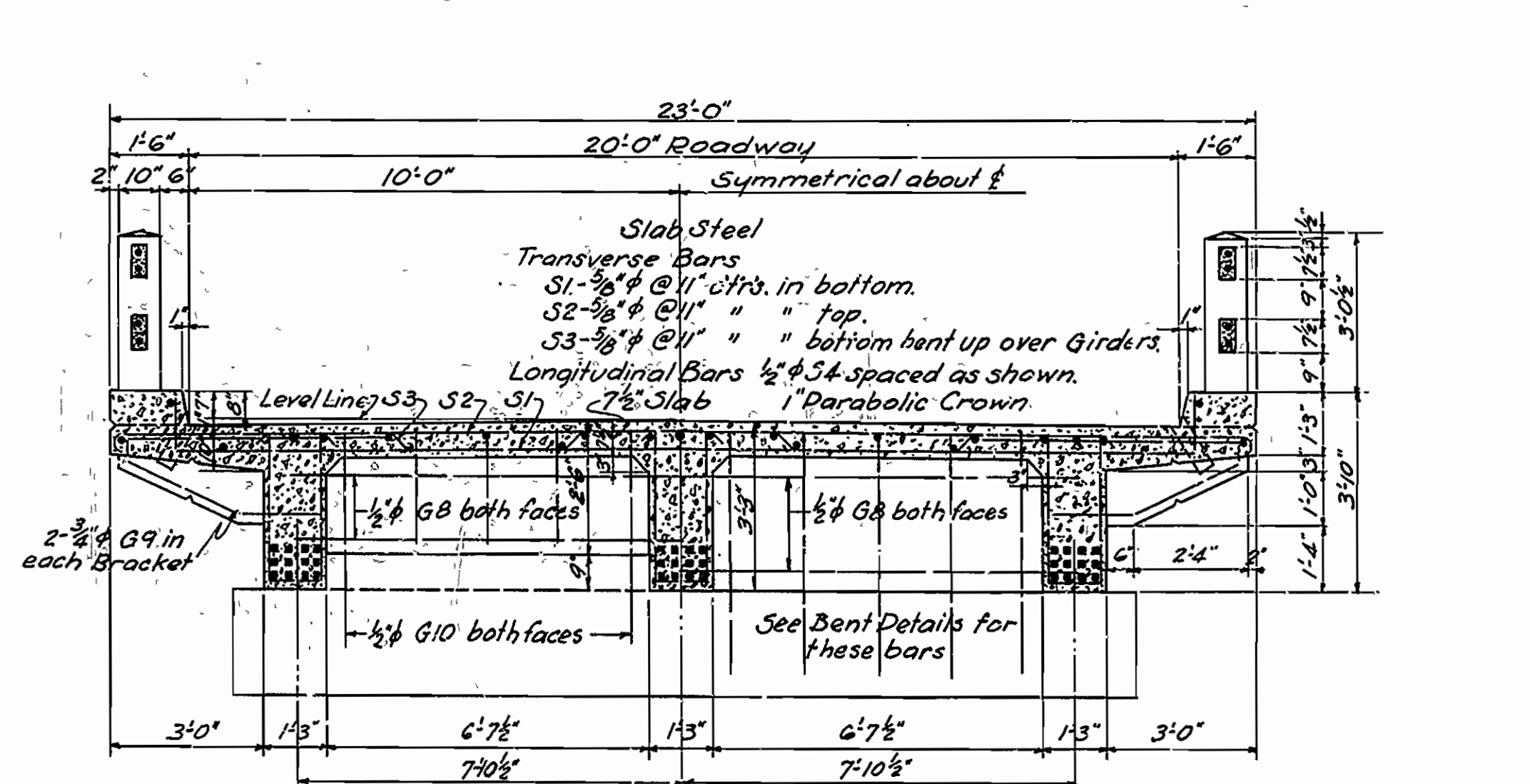
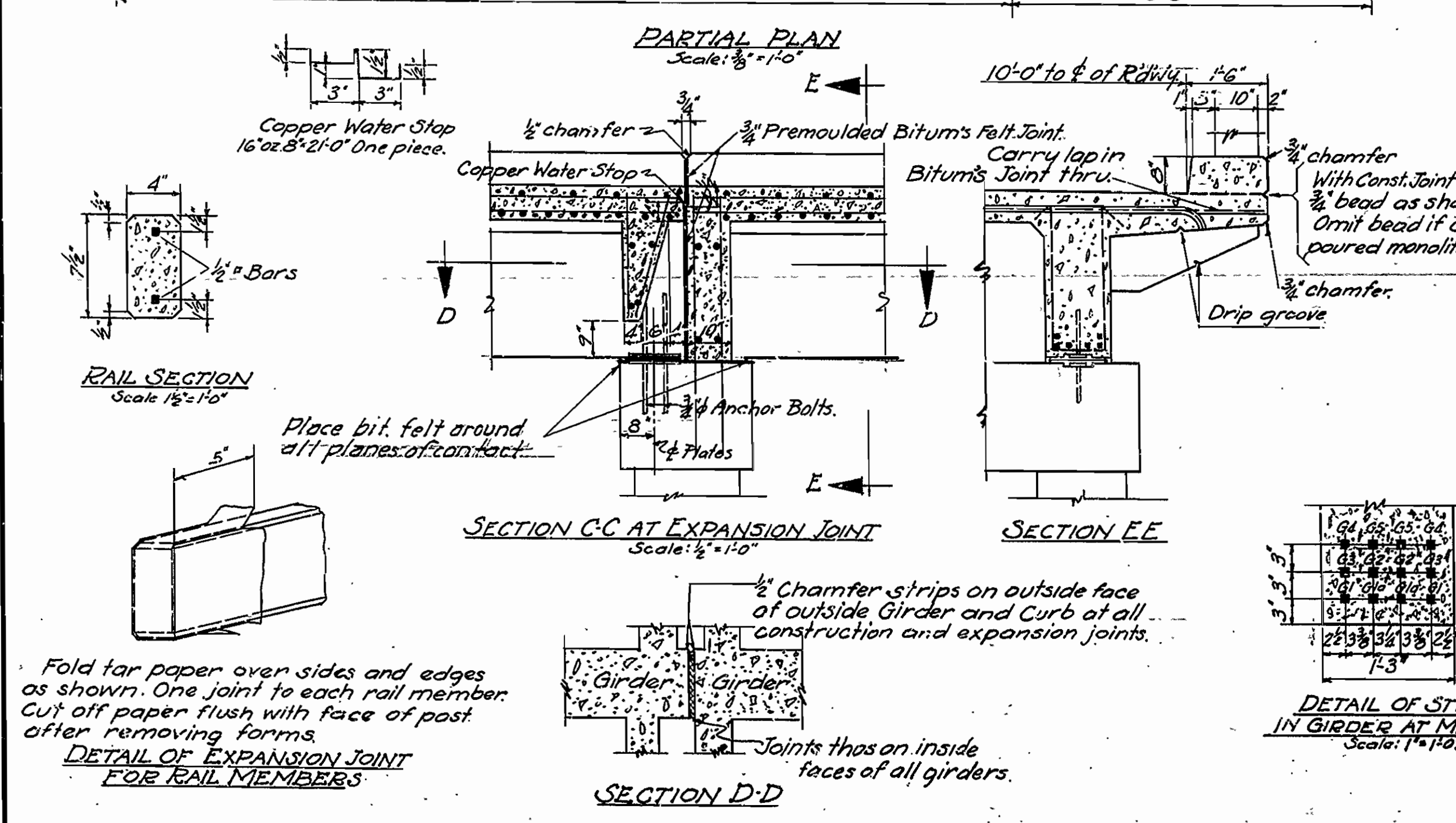
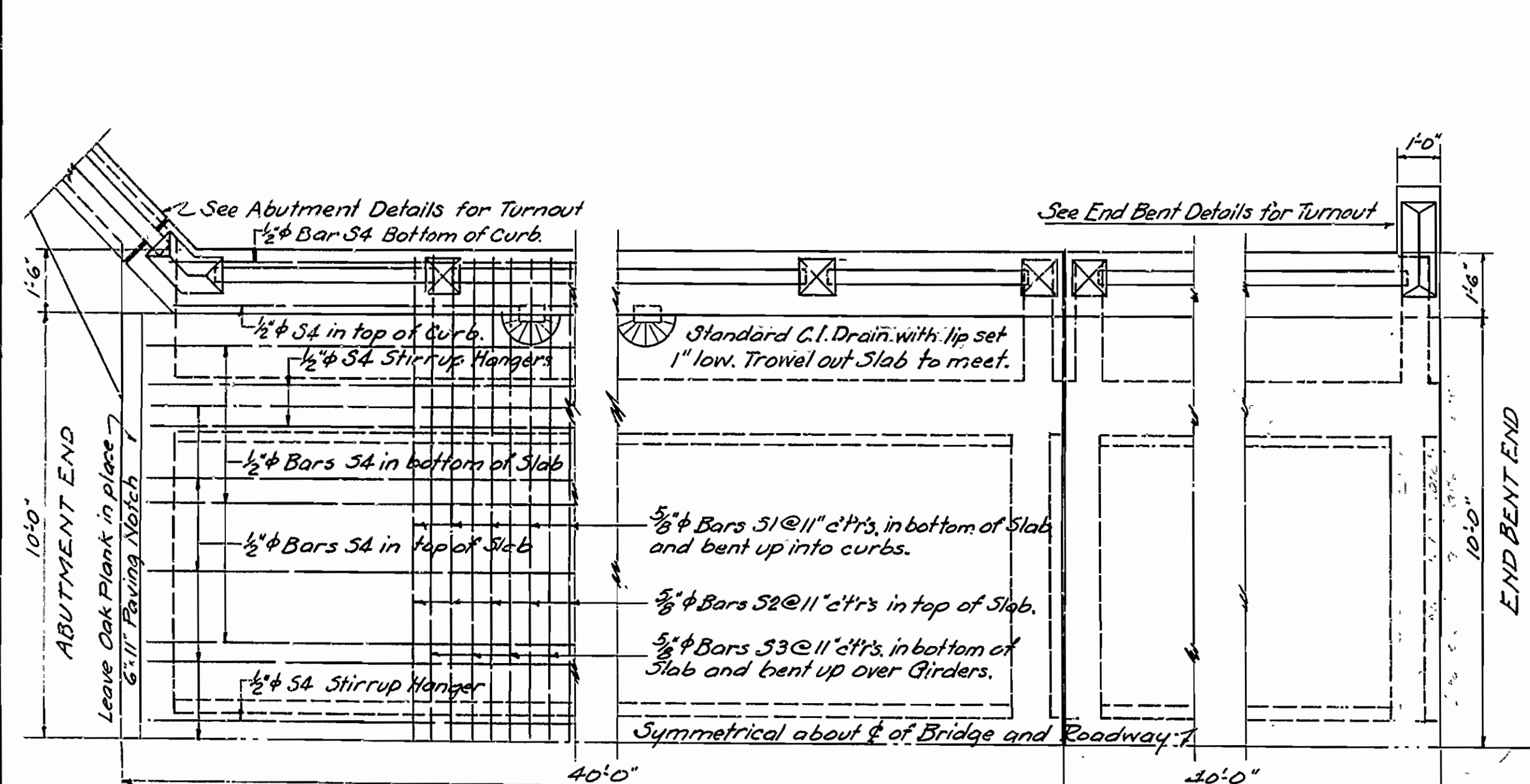




|           |      |           |           |           |         |           |    |
|-----------|------|-----------|-----------|-----------|---------|-----------|----|
| Dist. No. | Ark  | State     | Dist. No. | Ark       | Job No. | 227       |    |
| Year      | 1925 | Year      | 1925      | Year      | Job No. | 227       |    |
| Sheet No. | 37   | Sheet No. | 37        | Sheet No. | 37      | Sheet No. | 37 |



ABUTMENT END SPAN PIER OR BENT EXPANSION-FIXED INTERMEDIATE SPAN LONGITUDINAL SECTION ALONG 1/2 OF ROADWAY PIER OR BENT EXPANSION-FIXED END SPAN END BENT Scale: 3/8" = 1'-0"



HALF SECTION A-A HALF SECTION B-B Scale: 3/8" = 1'-0"

| MARK   | SIZE | LENGTH   | BENDING DIAGRAM |        |       |       |
|--------|------|----------|-----------------|--------|-------|-------|
|        |      |          | A               | B      | C     | D     |
| SLAB   | S1   | 5/8" φ   | 22'-6"          |        |       |       |
|        | S2   | 5/8" φ   | 23'-6"          |        |       |       |
|        | S3   | 5/8" φ   | 24'-0"          |        |       |       |
| GIRDER | G1   | 1 1/8" φ | 43'-8"          |        |       |       |
|        | G1a  | 1 1/8" φ | 41'-2"          |        |       |       |
|        | G2   | 1 1/8" φ | 40'-8"          |        |       |       |
|        | G3   | 1 1/8" φ | 42'-0"          | 29'-6" | 4'-9" | 5'-3" |
|        | G4   | 1 1/8" φ | 36'-0"          | 24'-6" | 4'-4" | 4'-9" |
|        | G5   | 1 1/8" φ | 31'-0"          | 19'-6" | 4'-4" | 4'-9" |
|        | G3*  | 1 1/8" φ | 41'-6"          | 29'-0" | 4'-9" | 5'-3" |
|        | G4*  | 1 1/8" φ | 35'-6"          | 24'-0" | 4'-4" | 4'-9" |
|        | G5*  | 1 1/8" φ | 30'-6"          | 19'-0" | 4'-4" | 4'-9" |

**GENERAL NOTES**  
 All exposed corners to have 3/4" chamfer unless otherwise noted.  
 Precast concrete handrails to be 1:1:2 Mix. Maximum aggregate 5/8".  
 All concrete above top of Bent Caps, except Handrail, to be Class 3.  
 Reinforcing steel to be deformed bars of structural or intermediate grade.  
 Shop lists and bending diagrams must be submitted by Contractor before fabrication is begun.  
 Roadway drains and expansion devices to be paid for at unit price bid for reinforcing steel.  
 Specifications: Arkansas Standard Road & Bridge Specifications adopted May 30, 1925 & Revised: See title sheet.  
 Unit Stresses: f<sub>c</sub> = 16,000 lb; f<sub>s</sub> = 750 lb; n = 15. Live Loading H15.  
 All dimensions on bars are from center to center of bars.

**DETAILS OF STANDARD 40'-0" R.C.D. GIRDER SPAN 3 GIRDER TYPE - 20'-0" CLEAR RDWY.**  
 ROUTE SEC.  
**ARKANSAS STATE HIGHWAY COMMISSION**  
 LITTLE ROCK, ARK.  
 Drawn By: \_\_\_\_\_ Date: \_\_\_\_\_  
 Traced By: \_\_\_\_\_ Date: \_\_\_\_\_  
 Checked By: \_\_\_\_\_ Date: \_\_\_\_\_  
 Bridge No. \_\_\_\_\_ Drawing No. 227  
 Scale: 3/8" = 1'-0" (unless noted)

BRIDGE ENGINEER