

FISCAL YEAR	Job No.	SHEET NO.	TOTAL SHEETS
1930	10125	1	10

STATE OF ARKANSAS
STATE HIGHWAY COMMISSION

PLAN OF PROPOSED BRIDGES
OVER ST. FRANCIS RIVER & BIG SLOUGH

CLAY COUNTY

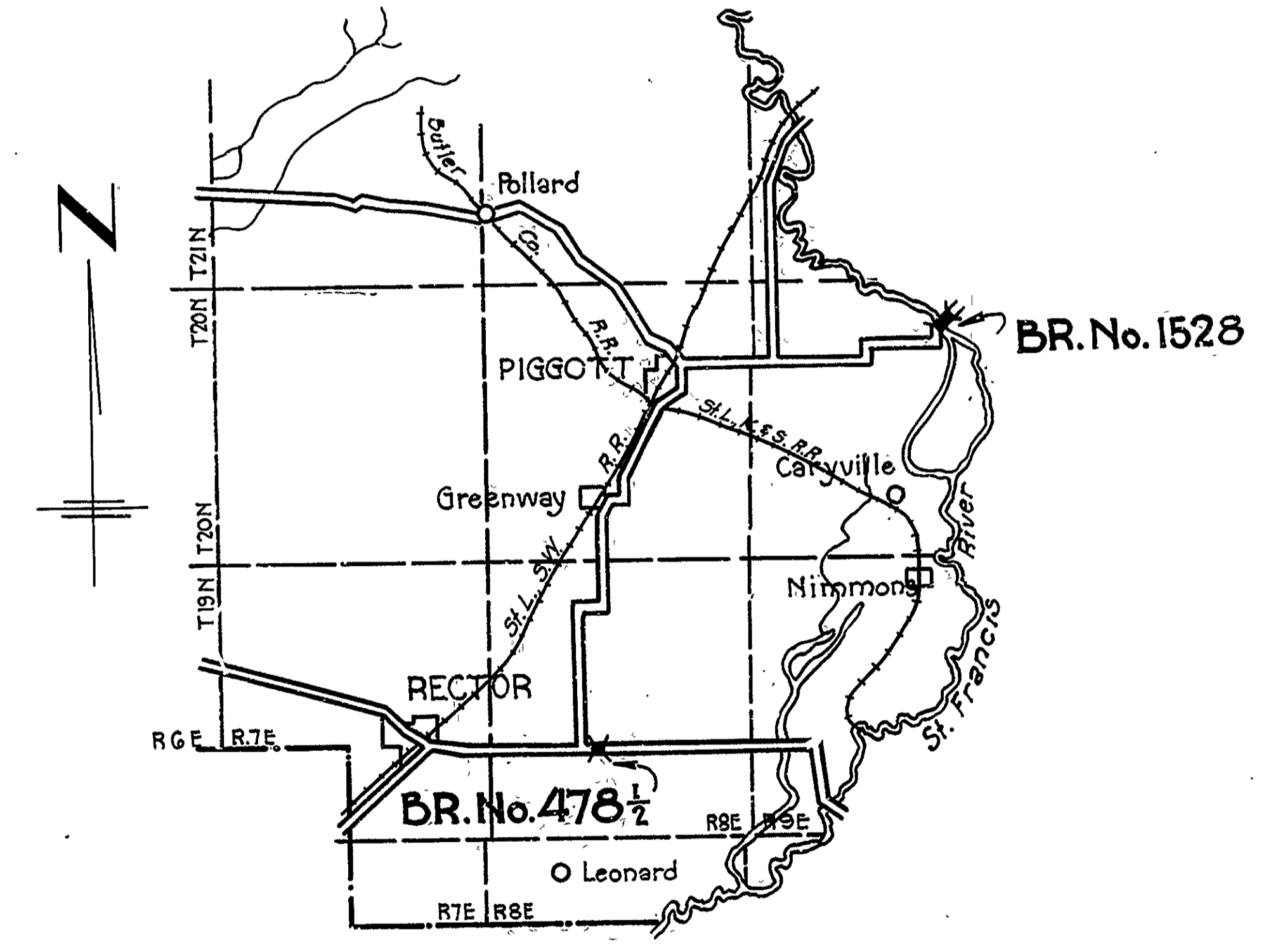
ROUTE 34 SEC. 6
JOB No 10125

INDEX OF SHEETS

Sh. No. 1	Drawg. No. 2713	Title Sheet
" 2	" 2714	Layout Br. No. 478 1/2
" 3	" 2715	Details 90' Steel Truss
" 4	" 2716	" of Bents for Truss
" 5	" 2071	Standard 19'-0" T.T. Trestle 20' Rdy.
" 6	" 2072	" " T.T. " 20' " 44°38' Skew
" 7	" 2717	Layout Br. No. 1528
" 8	" 456B	Details 76' Steel Truss
" 9	" 2718	Spans adj. 76' Truss
" 10	" 2719	" " 128' "

QUANTITIES

Item No. 524	Earth Excavation	6000 Cu.Yds.
" " 525	SP452 Untr. Timber	0.040 M.F.B.M.
" " 526	SP452 Treated "	76.383 M.F.B.M.
" " 527	" 34 Class 'S' Concrete	235.17 Cu.Yds.
" " 528	" 35 Reinforcing Steel	51,646 Lbs.
" " 529	" 56 Structural Steel (Trusses)	62,600 Lbs.
" " 530	SP452 Treated Timber Piling	4,575 Lin.Ft.
" " 531	S.P. Treated Timber Pile Cut-off	292 Lin.Ft.
" " 532	S.P. Removing existing Br. at Big Slough & re-erecting 76' Steel Span at St. Francis R. Bridge Site	lump sum
" " 533	S.P. Removing existing Str. at Browns Ferry Bridge	lump sum



The Specifications adopted by the State Highway Commission, May 30th., 1925 apply with subsequent revisions and Special Provisions noted apply to this Project.

- Pamphlet A Revised Sept. 1st, 1928
- " B
- " C
- " D Revised July 1st, 1928
- " E
- " F
- " G
- " H Revised Oct. 1st, 1928
- " I
- " J Revised Jan. 1st, 1929
- " K
- " L Revised Jan. 1st, 1929

SPECIAL PROVISIONS

Item	No. of Sheets
Earth Excavation	1
Timber Bridges	12
Removal of Existing Structure Big Slough Bridge Site	1
Removal of Existing Structure Browns Ferry Bridge Site	1

LAYOUT
Scale: 3/8 in. = 1 Mi.

LENGTH OF PROJECT =	1178'-10"
LENGTH OF BRIDGES =	629'-10"
LENGTH OF EMBANKMENT =	549'-0"

APPROVED _____
CHAIRMAN - STATE HIGHWAY COMMISSION

APPROVED _____
STATE HIGHWAY ENGINEER

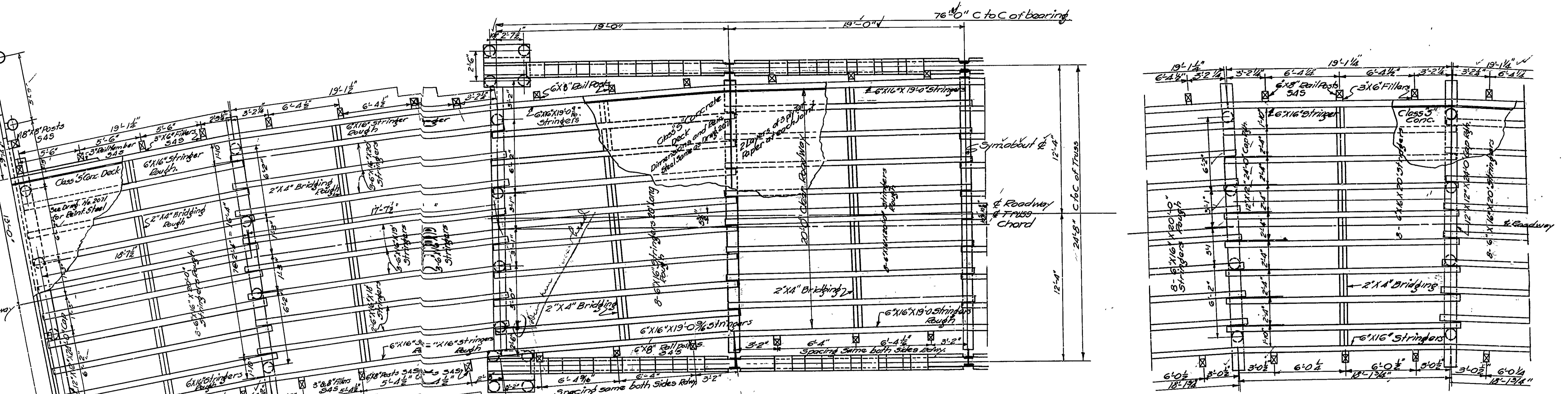
M.B. Lewis
BRIDGE ENGINEER

BRIDGES NO. 478 1/2 & 1528

DRAWING NO. 2713

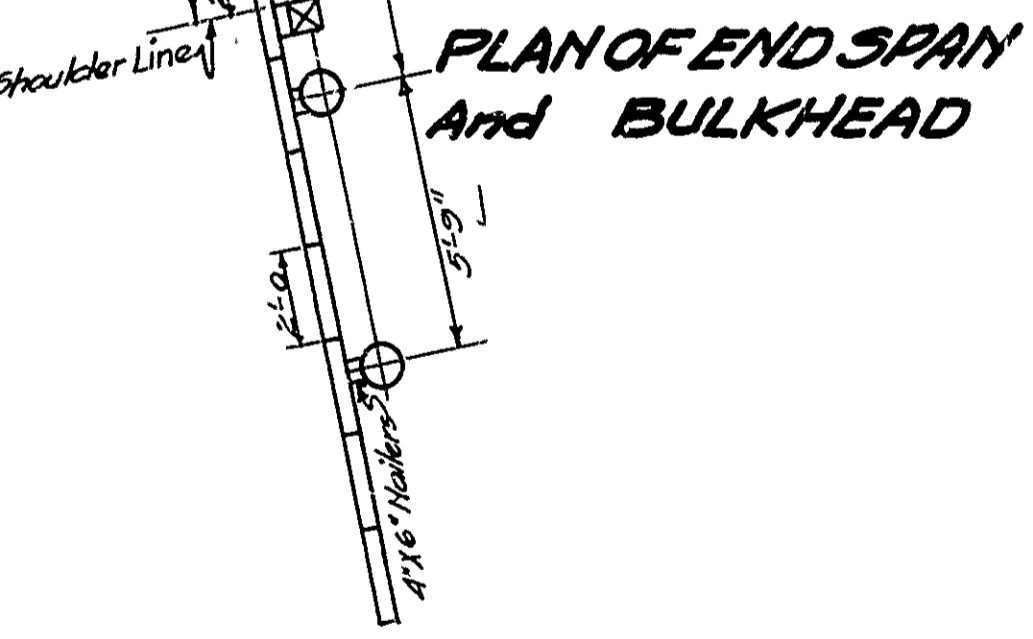
FISCAL YEAR	JOB NO	SHEET NO.	TOTAL SHEETS
1930	10125	9	10

For General Details See Drawing No. 2071
 For Details of 76'-0" Truss Span See Drawing No. 456-B

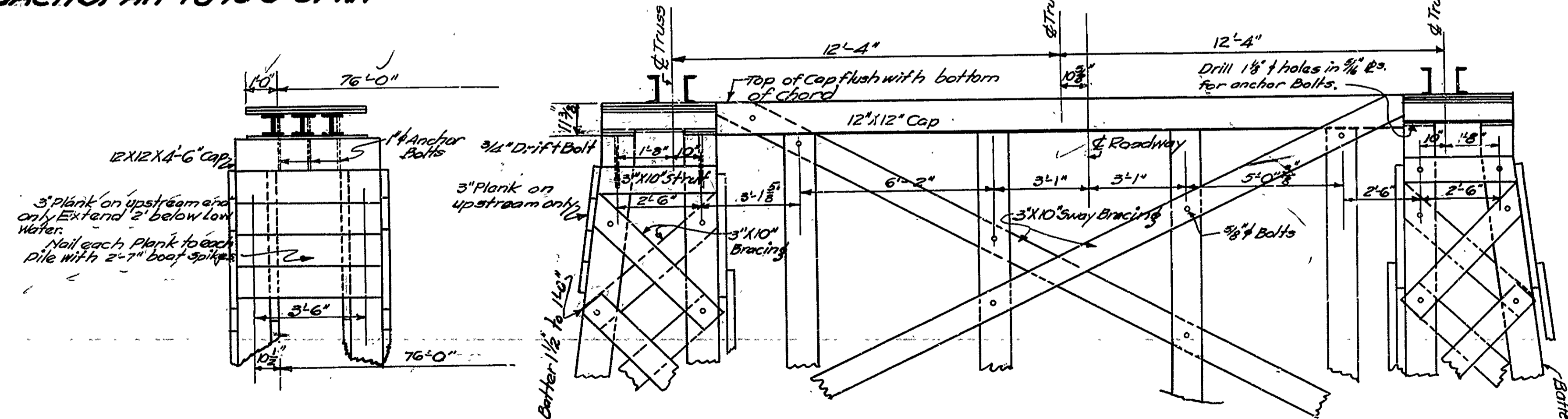


HALF PLAN OF DECK 76'-0 TRUSS SPAN
 Scale 1/4" = 1'-0"
 Lump Sum Bid for Dismantling, Hauling to New Site and Erection of 76'-0" Truss Span

TYPICAL PLAN OF INT. SPAN ON 1/4 CURVE
 Scale 1/4" = 1'-0"



PLAN OF END SPAN AND BULKHEAD



ELEV. OF STREAM END

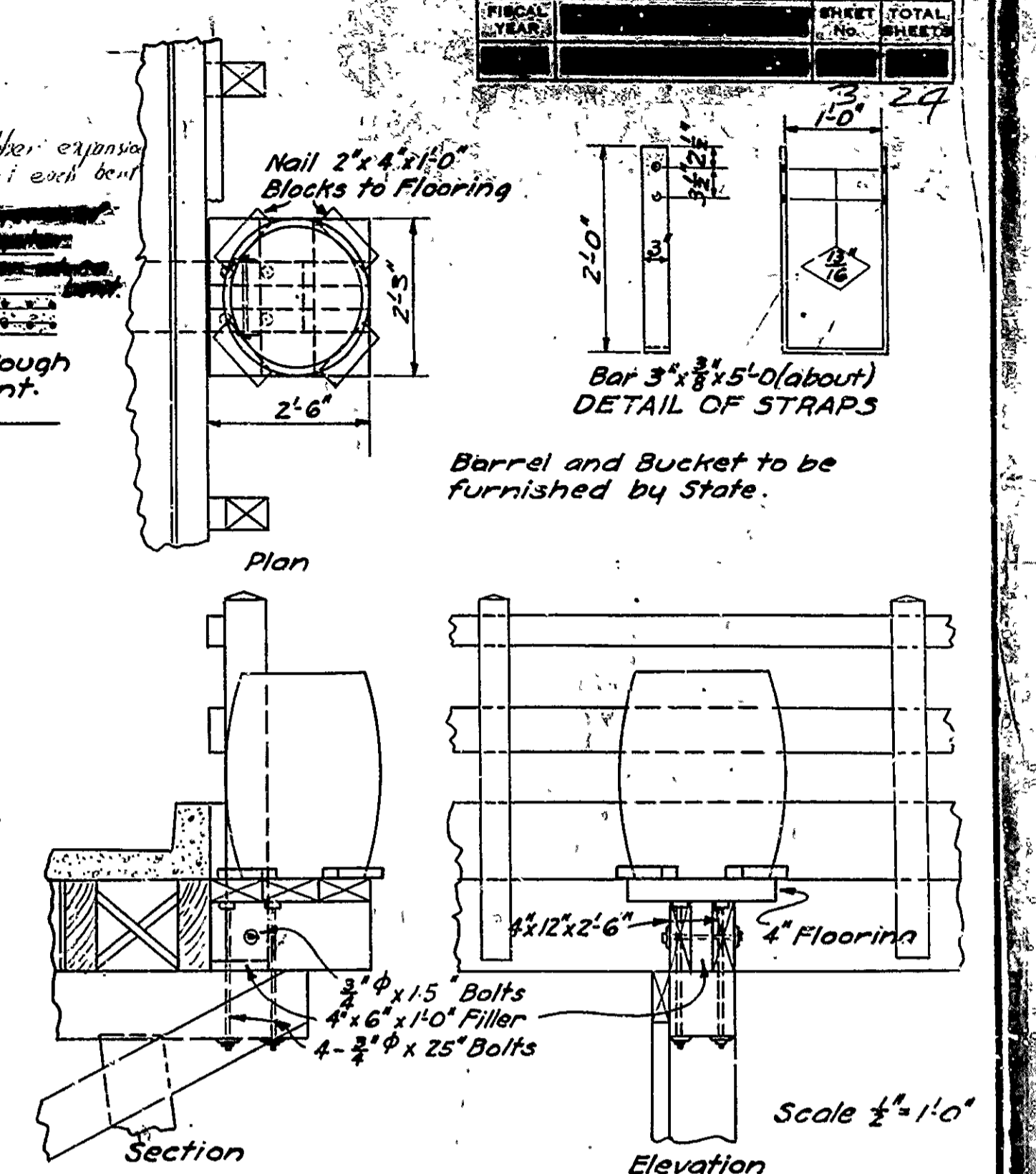
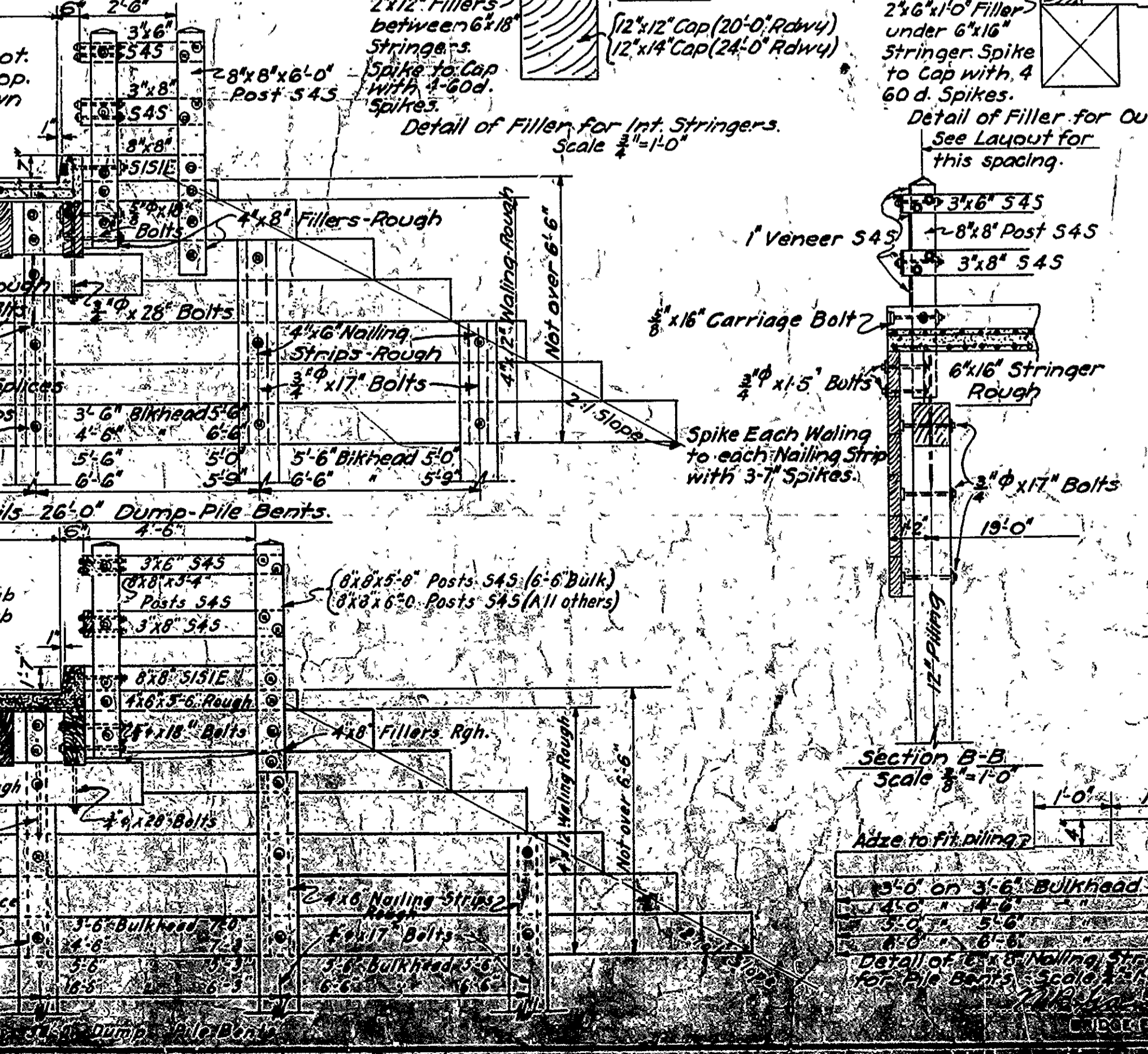
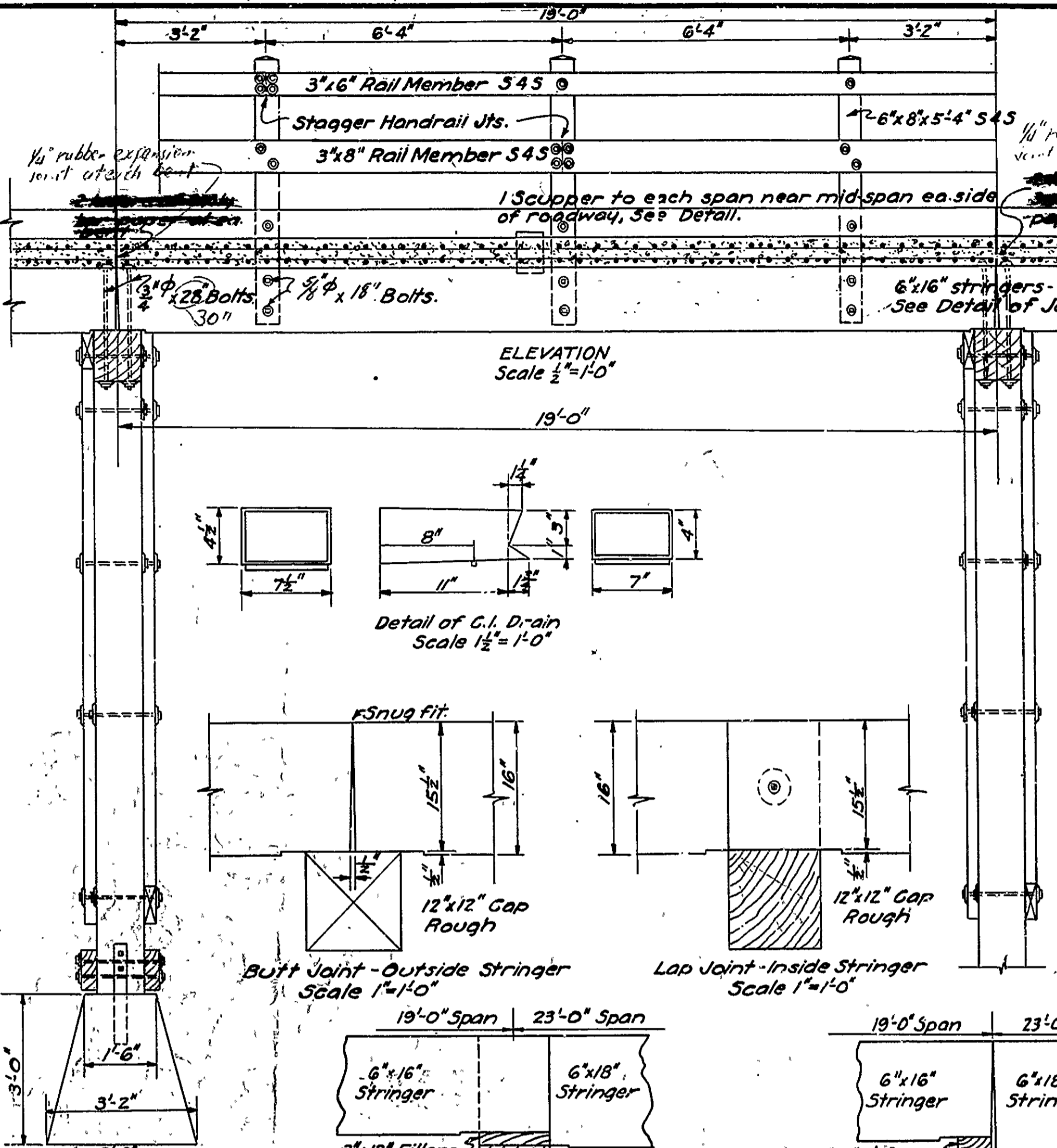
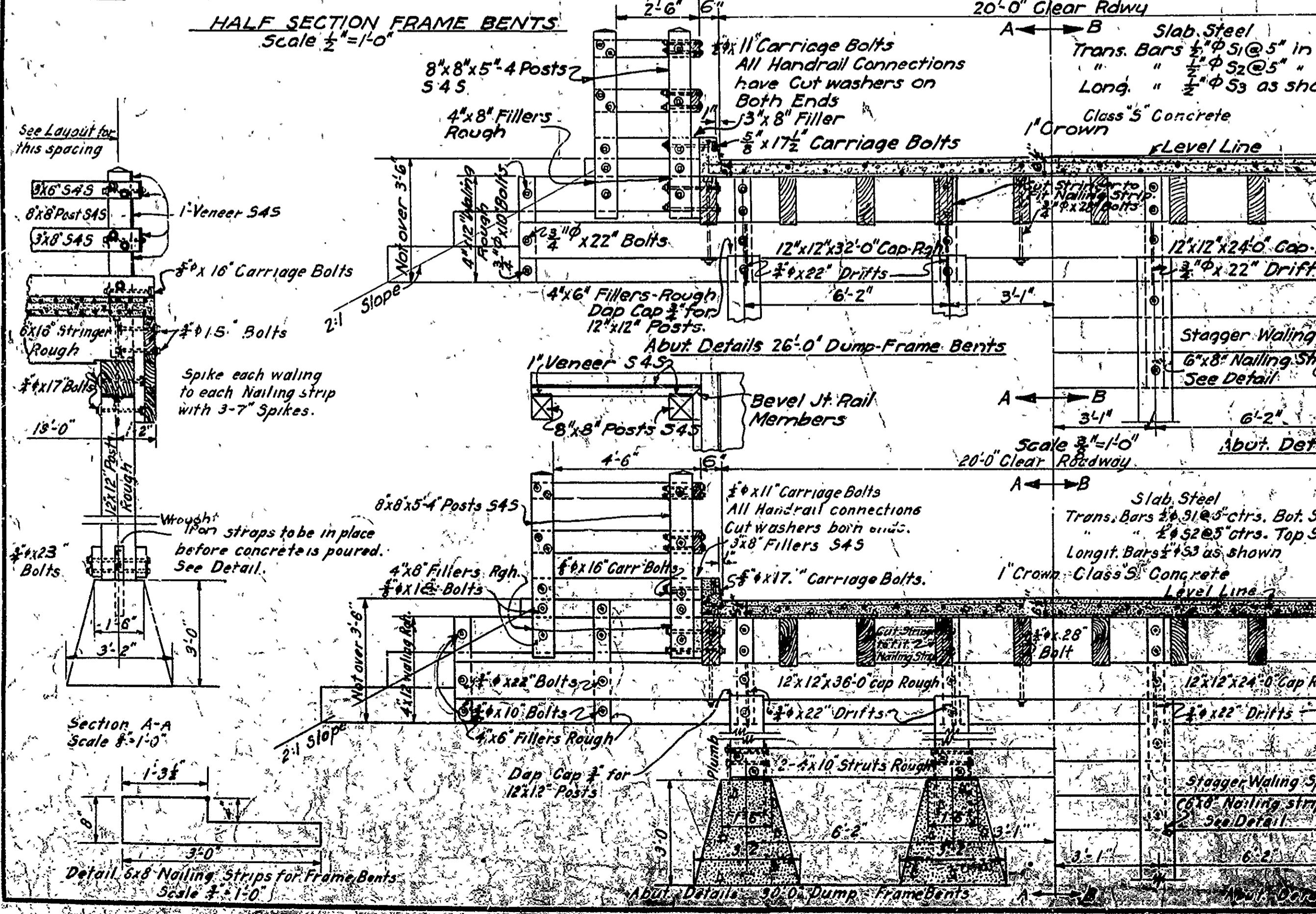
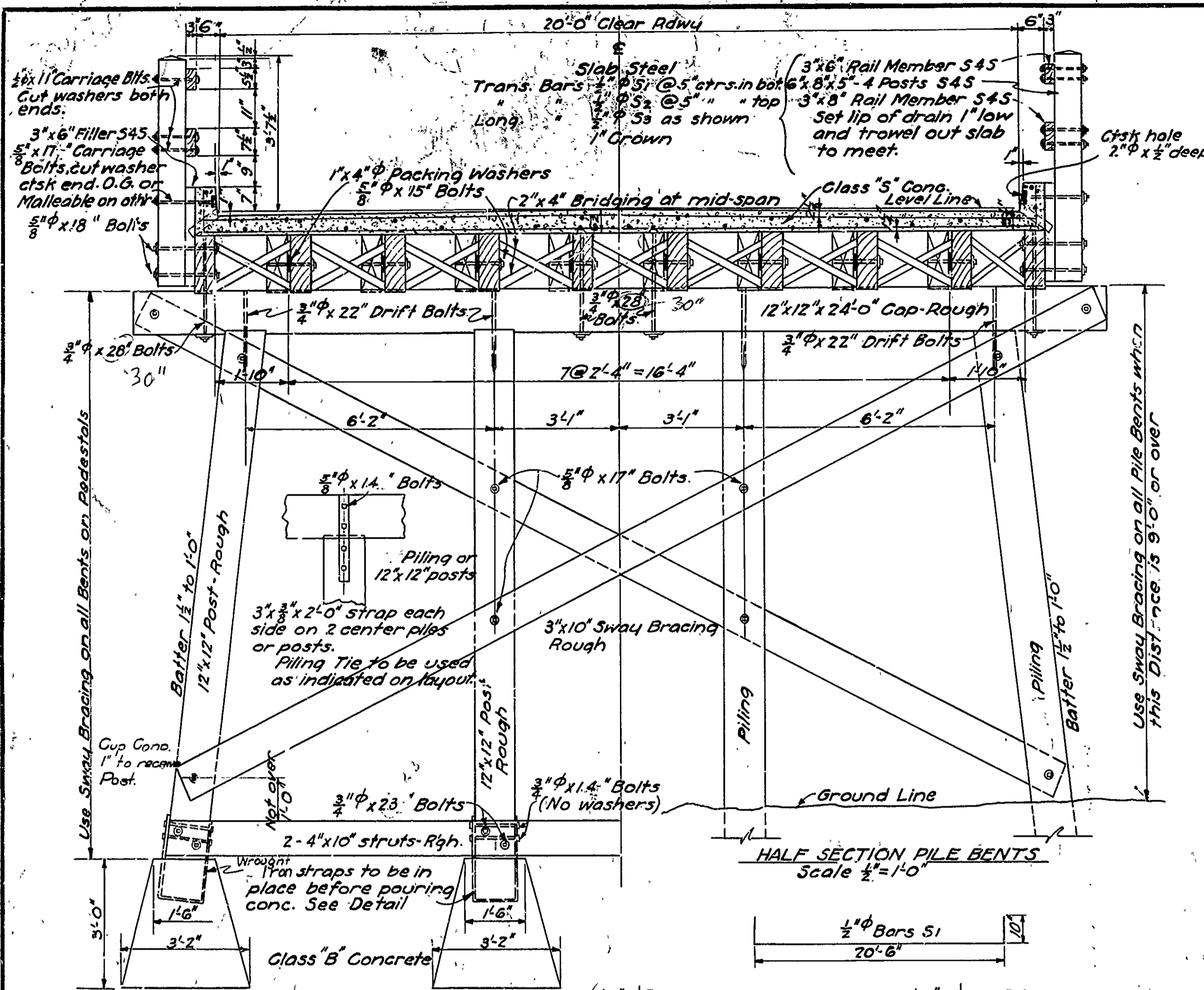
ELEV. PIERS

Scale 3/8" = 1'-0"

DETAILS
BRIDGE AT BROWNS FERRY
PIGGOTT MISSOURI LINE ROAD
CLAY CO.

ROUTE 34 SEC. 6
ARKANSAS STATE HIGHWAY COMMISSION
 LITTLE ROCK, ARK.
 Drawn By: *ELB* Date: 6-20-30
 Traced By: *WCB* Date: 6-20-30
 Checked By: *WCB* Date: 6-21-30
 Scale: 1/4" = 1.0' & as noted
BRIDGE NO. 1528 DRAWING NO. 27B

W.B. Lamm
 BRIDGE ENGINEER



ITEM	QUANTITY	UNIT	TOTAL
Rail Posts	6x8, 8x8"	S4S	
Members	3x6, 3x8"	S4S	
Post Fillers	3x6, 3x8"	S4S	
Falloe Guard	8x8"	S1S1E	
Stringers	6x16"	Rough	
Bridging	2x4"		
Caps	12x12"		
Waling	4x6, 4x8"		
Fillers	4x6, 4x8"		
Nailing Strips	4x6, 6x8"		
Sway Bracing	3x10"		
Posts (Frame Bent Only)	12x12"		
Struts	4x12"		
Supports (Water Bar)	4x10"		
Flooring	2x4"		
Blocks	4x6"		
Fillers	4x6"		