

STATE OF ARKANSAS
STATE HIGHWAY COMMISSION

FISCAL YEAR	Job No.	SHEET NO.	TOTAL SHEETS
1930	6120	1	12

INDEX OF SHEETS

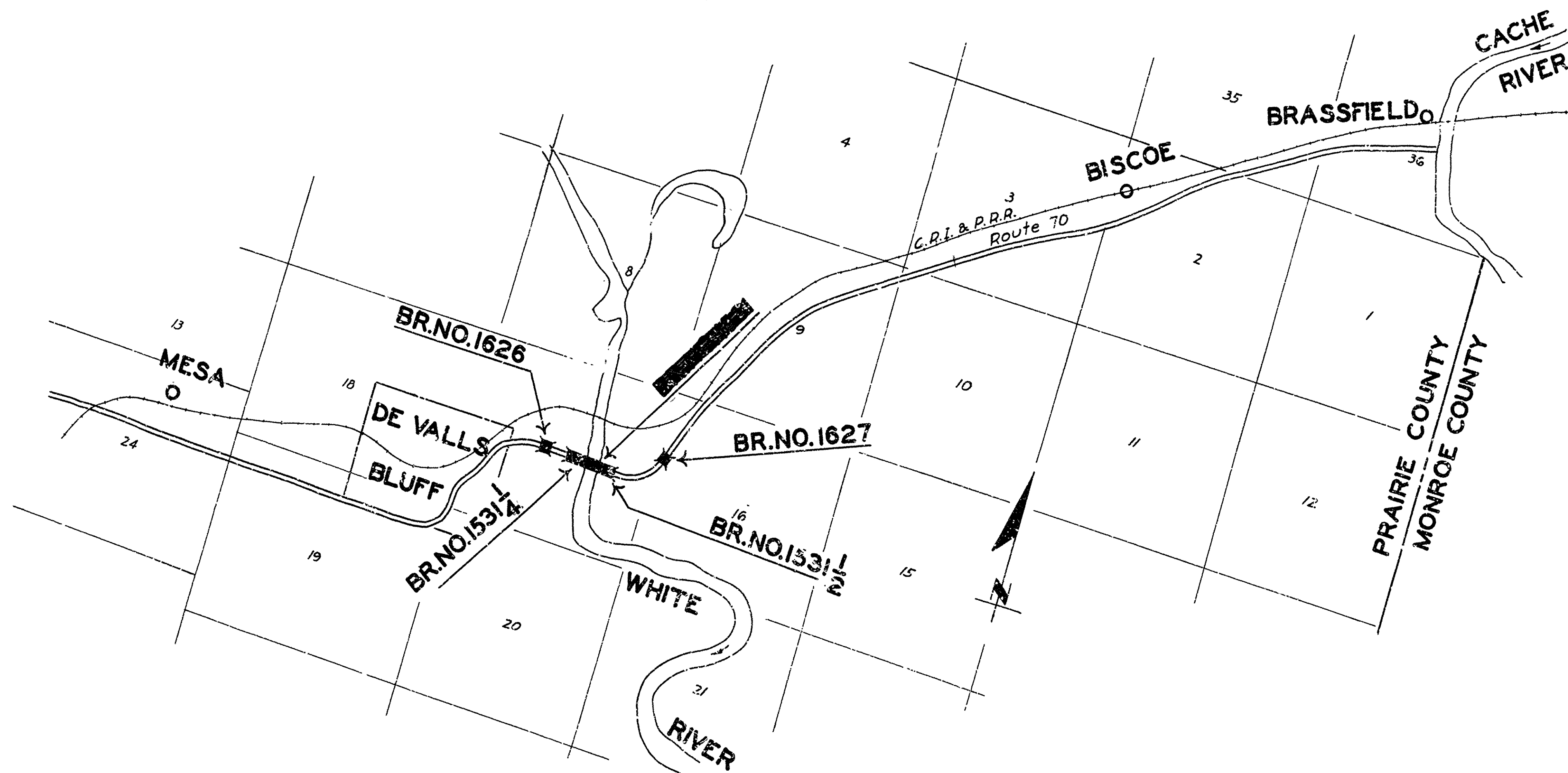
Sheet No.	Drwg No.	Title
1	3000	Title
2	3001	Layout of Br. No. 1626
3	3002	General Layout of Bridges No. 1531, 1531 1/4 & 1531 1/2
4	3003	Layout of Br. No. 1531 1/4
5	3004	Layout of Br. No. 1531 1/2
6	3005	Approach Span & Repair Details for Bridges No. 1531, 1531 1/4 & 1531 1/2
7	3006	Grade, Profile & Super-elevation for Bridge No. 1531 1/2
8	3007	Layout of Bridge No. 1627
9	3008	Grade, Profile & Super-elevation for Bridge No. 1627
10	3009	Curve Details, Bridges No. 1531 1/2 and 1627
11	3010	Handrail Details
12	1036	Standard 34'-0" R.C.D. Girder Span, 27'-0" Roadway

PLAN OF PROPOSED BRIDGES
OVER
WHITE RIVER BOTTOM
PRAIRIE COUNTY

ROUTE 70 SEC. 16
JOB NO. 6120

ORIGINAL QUANTITIES

S.P. & Item No. 12	Earth Excavation	600	Cu. Yds.
" "	13 Dry Excavation for Structures	80	Cu. Yds.
" "	55 Reinforcing Steel	822,450	Lbs.
S.P. & " "	56 Structural Steel (Trusses)	2,856	Lbs.
S.P. & " "	68 Precast Concrete Piling (16" dia)	12,570	Lin. Ft.
S.P. & " "	69 Rip Rap (1'0" thick)	605	Cu. Yds.
" "	74 Concrete Railing for Structures	4,573	Lin. Ft.
S.P.	Asphalt Plank (1/2" thick)	1,280	Sq. Yds.
S.P.	Maintaining Traffic		Lump Sum
S.P.	Cleaning and Painting Existing Structure		Lump Sum
Alternate of			
S.P. & Item No. 52	Treated Bridge Timber	63,637	M.Ft. B.M.
" "	54 Class "S" Concrete	3,125.39	Cu. Yds.
or Alternate of			
S.P. & Item No. 52	Redwood Bridge Timber	63,637	M.Ft. B.M.
" "	54 Class "S" Concrete	3,173.9	Cu. Yds.



The Specifications adopted by the State Highway Commission, May 30th, 1925 apply with subsequent revisions and Special Provisions noted apply to this Project.

Pamphlet	Revised	Date
A	Revised	Sept. 1st, 1920
B	"	July 1st, 1930
C	"	July 1st, 1930
D	Revised	July 1st, 1928
E	"	Jan. 1st, 1930
F	"	Jan. 1st, 1930
G	"	June 1st, 1923
H	Revised	Oct. 1st, 1928
I	"	May 30th, 1925
J	Revised	Jan. 1st, 1929
K	"	May 30th, 1925
L	Revised	Jan. 1st, 1929

SPECIAL PROVISIONS

Item	No. of Sheets
Earth Excavation	3
Precast Concrete Piling	3
Rip Rap	1
Asphalt Plank	1
Maintaining Traffic	1
Cleaning & Painting	1
Bridge Timber	12
Coarse & Fine Aggregate	2
Section 8.2	1
Field Engineers Office	1

LAYOUT

Scale: 1" = 2000'

LENGTH OF PROJECT = 2,275'-6" = 0.430
LENGTH OF BRIDGES = 2,275'-6"
LENGTH OF EMBANKMENT = 0

APPROVED
CHAIRMAN - STATE HIGHWAY COMMISSION

APPROVED
STATE HIGHWAY ENGINEER

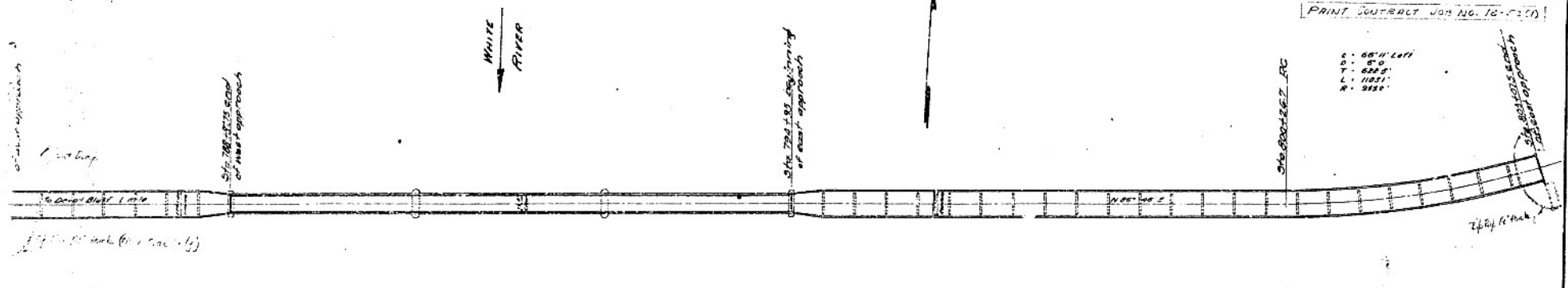
N.B. Lawrence
BRIDGE ENGINEER

BRIDGES NO. 1626, 1531 1/4, 1531, 1531 1/2 & 1627

DRAWING NO. 3000

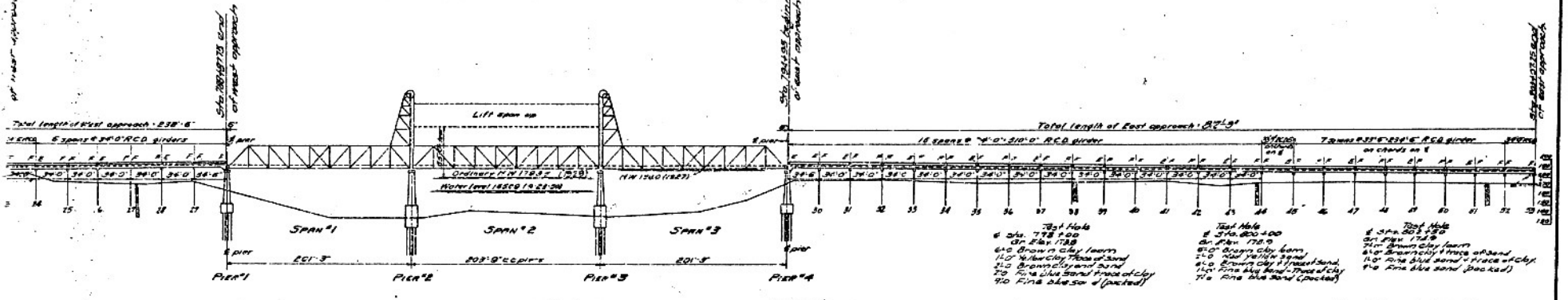
PRINT CONTRACT FOR NO. 12-1331

0 - 66' 11" LEFT
 0 - 6' 0"
 7 - 622' 5"
 1 - 102' 11"
 1 - 315' 11"



QUANTITIES FOR BRIDGE No 1531

Item No.	36	Structural steel (Truss bridges)	2856 #
"	37	Truss deck plank	1280 Sq yds.
"	38	Maintenance keel	Lump sum
"	39	Cleaning and painting existing struc.	Lump sum
Alternate of:			
"	39A	Timber bridge timber	63637 M.F.B.M.
"	40	Class 5 concrete	80 cu yds.
or alternate of:			
"	39B	Redwood bridge timber	63637 M.F.B.M.
"	40	Class 5 concrete	10 cu yds.



ELEVATION
 Bridge No 1531 R.C.C. girder approach

Test Hole
 25' Pt. Sta. 187+90
 6" Exp. 176.8
 6" 10" Brown sandy clay
 11" 10" 7 1/2" Sand
 3' 0" Fine blue sand (packed)
 1' 0" Fine blue sand (packed)
 2' 6" coarse grey sand (packed)

ELEVATION
 Bridge No 1531 Truss spans in place
 Excepted from Br. Job No. G120

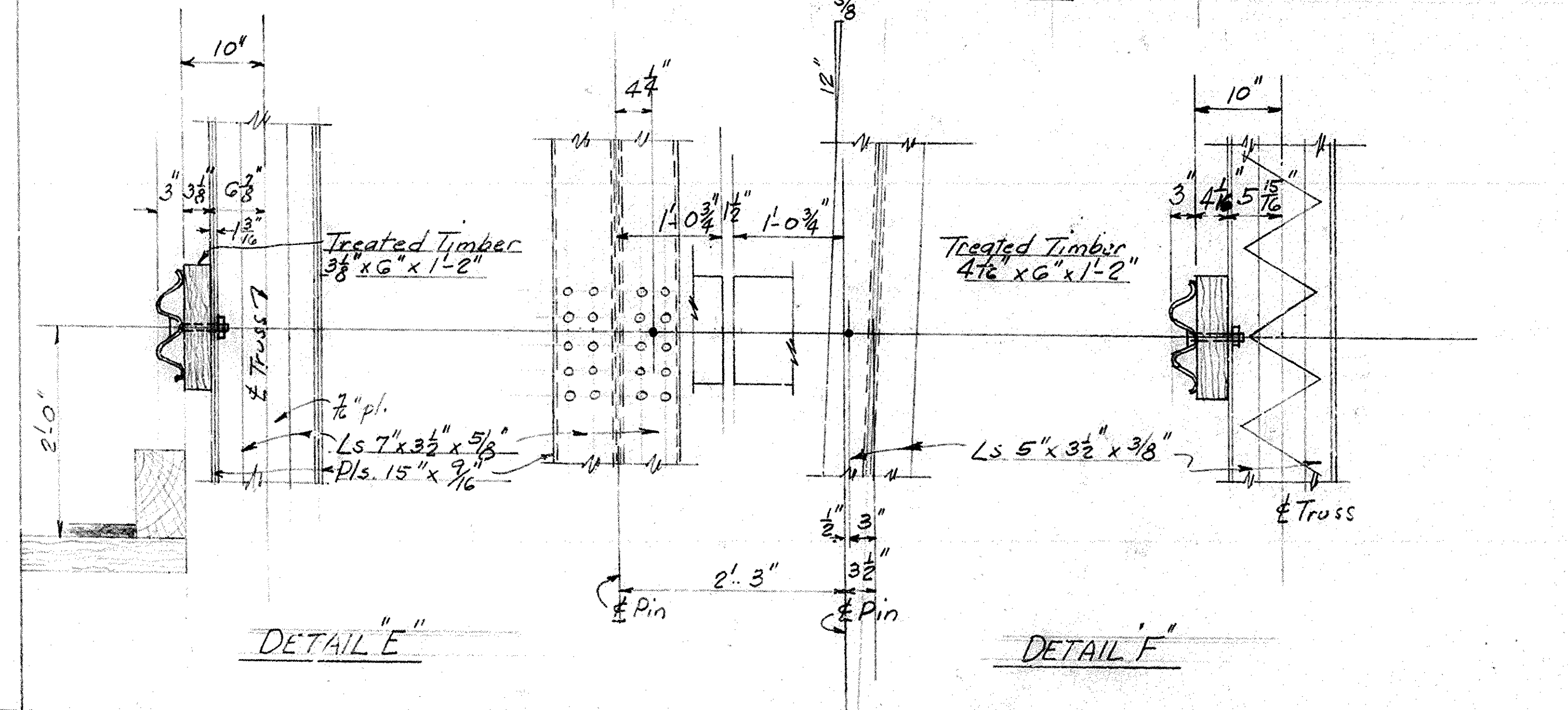
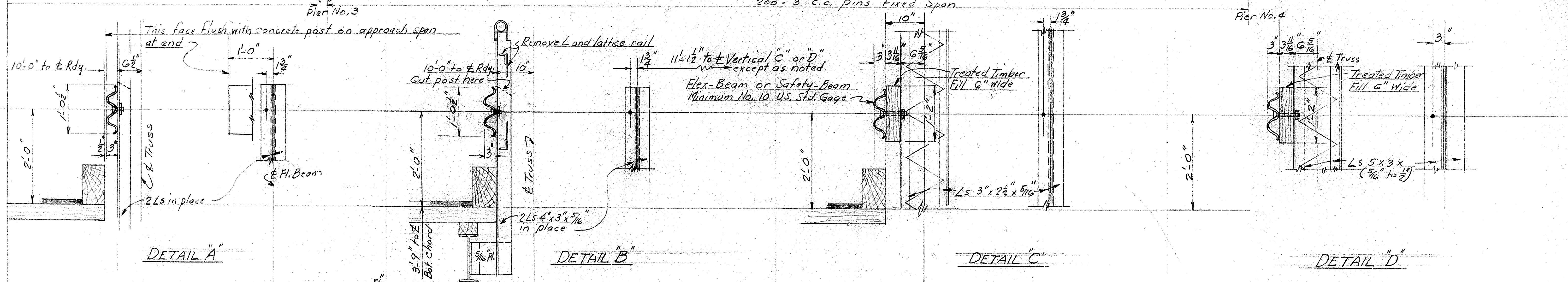
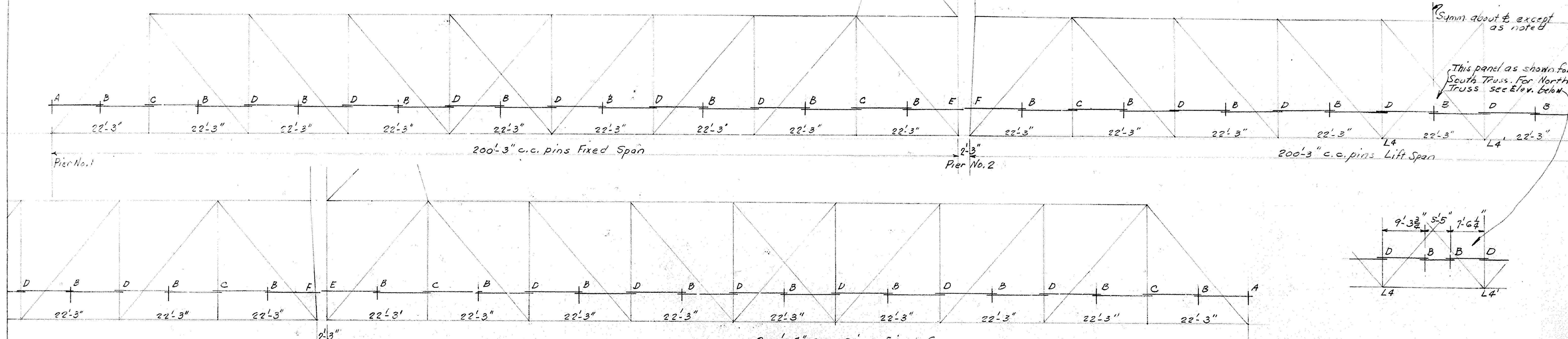
Test Hole
 20' Pt. Sta. 174+95
 on clay 176.0
 1' 0" Brown sandy loam
 1' 0" Brown sandy clay
 1' 0" Fine blue sand (packed) (2.5')
 1' 0" Fine blue sand (packed) (2.5')
 1' 0" Fine blue sand (packed) (2.5')
 1' 0" Fine blue sand (packed) (2.5')
 1' 0" Fine blue sand (packed) (2.5')

ELEVATION
 Bridge No 1531 R.C.C. girder approach

GENERAL LAYOUT
APPROACHES TO WHITE RIVER BRIDGE
MESA-BRASSFIELD ROAD
PRAIRIE CO.
 ROUTE 70 SEC. 16
ARKANSAS STATE HIGHWAY COMMISSION
 LITTLE ROCK, ARK.
 Drawn By: L.E.S. Date: 1/22/30
 Traced By: L.E.S. Date: 2/2/30
 Checked By: _____ Date: _____
BRIDGE No 1531/1531A DRAWING No. 3002
 1/16 - 5/16

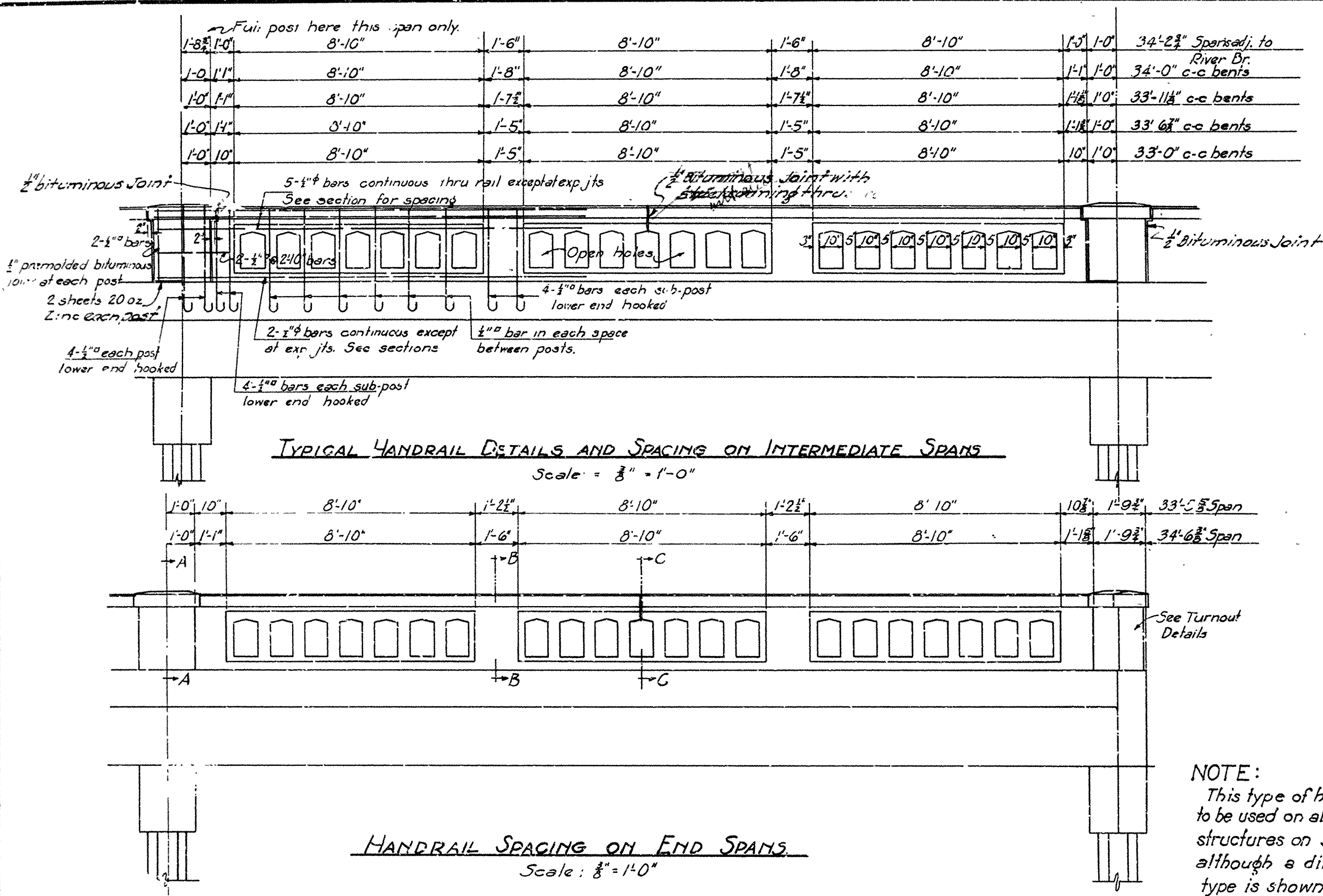
N.B. Brown
 BRIDGE ENGINEER

STATE ROAD DIST. NO.	STATE	PROJECT NO.	FISCAL YEAR	SHEET NO.	TOTAL SHEETS
6	ARK.				
STATE JOB NO. A.F.E. 6-10					



Note: Dimensions to be checked in the field before material is ordered.
 Approx. length of rail including laps = 1321 Feet
 " Timber = 0.135 M.F.B.M.

DETAILS OF HANDRAIL
 WHITE RIVER BRIDGE AT DEVALLS BLUFF
 PRAIRIE COUNTY
 ROUTE 70 SEC. 16
 ARKANSAS STATE HIGHWAY COMMISSION
 LITTLE ROCK, ARK.
 Drawn By: L.P.C. 1/31/49
 Scales: 1" = 10'
 & 1" = 1'-0"
 BRIDGE No. 1531 DRAWING No. 7262



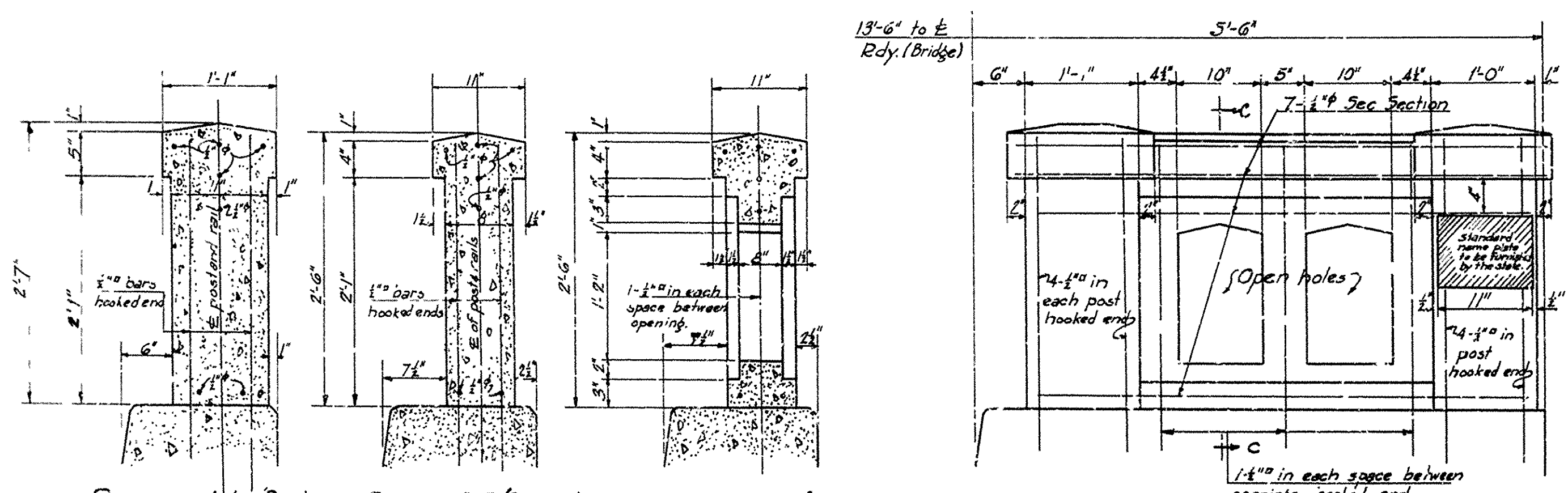
TYPICAL HANDRAIL DETAILS AND SPACING ON INTERMEDIATE SPANS
Scale: 3/8" = 1'-0"

LIST OF REINFORCING STEEL DIFFERING FROM STANDARD DRWG. 1036

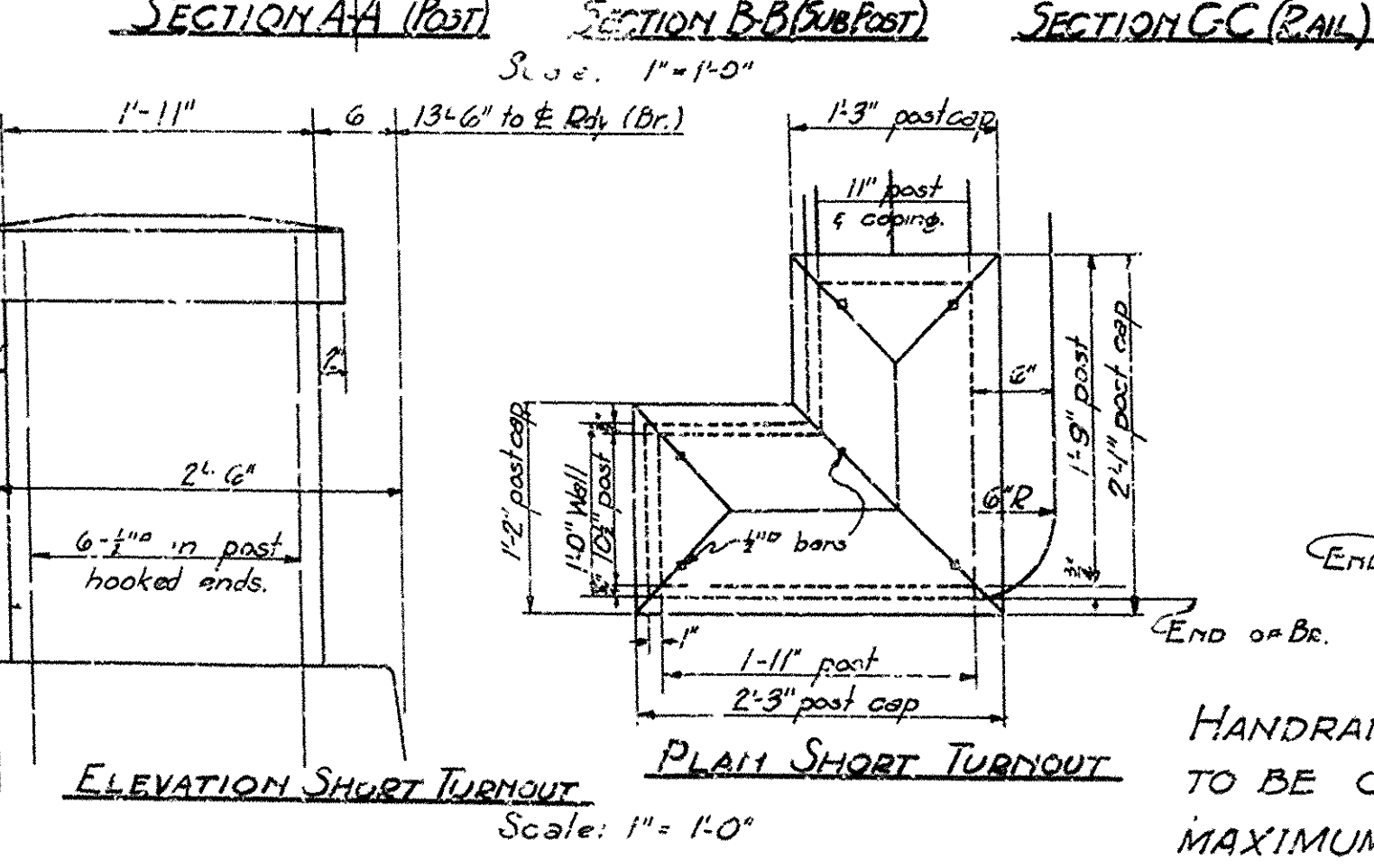
LOCATION	MARK	NUMBER ONE GIRDER OR ONE BENT	LENGTH	BENDING DIAGRAM	
				A	B
Girders A'-B'-C'-F'-N'	G ₁₆	4	37'-5"	33'-5"	1'-0"
" D'-E'-G'-O'	G ₁₇	4	37'-3"	33'-3"	"
" H'-I'-K'	G ₁₈	4	37'-1"	33'-1"	"
" J'	G ₁₉	4	36'-11"	32'-11"	"
" L'	G ₂₀	4	36'-9"	32'-9"	"
" M'	G ₂₁	4	37'-10"	"	"
" W'	G ₂₂	4	37'-8"	"	"
" A'-B'-C'-F'-N'	G ₂₃	2	33'-5"	26'-3"	3'-7"
" D'-E'-G'-O'	G ₂₄	2	33'-3"	26'-1"	"
" H'-I'-K'	G ₂₅	2	33'-1"	25'-11"	"
" J'	G ₂₆	2	32'-11"	25'-9"	"
" L'	G ₂₇	2	32'-9"	25'-7"	"
" M'	G ₂₈	2	33'-10"	26'-8"	"
" W'	G ₂₉	2	33'-8"	26'-6"	"
Bents No. 36-37-38	P ₃	3	5'-4"	1'-8"	1'-10"
" " 36-37-38	P ₁₇	3	5'-7"	1'-8"	1'-11 1/2"
" " 36-37-38	P ₁₈	3	5'-10"	1'-5"	2'-1"
" " 36-37-38	P ₁₉	3	6'-1"	1'-8"	2'-2 1/2"
" " 36-37-38	P ₂	3	6'-4"	1'-8"	2'-4"
" " 39-40-41	P ₃	3	5'-4"	1'-8"	1'-10"
" " 39-40-41	P ₂₁	3	5'-8"	1'-5"	2'-0"
" " 39-40-41	P ₂₂	3	6'-0"	1'-8"	2'-2"
" " 39-40-41	P ₂₃	3	6'-4"	1'-8"	2'-4"
" " 39-40-41	P ₂₄	3	6'-8"	1'-8"	2'-6"
" " 42-43-44	P ₃	3	5'-4"	1'-8"	1'-10"
" " 42-43-44	P ₂₅	3	5'-9"	1'-8"	2'-0 1/2"
" " 42-43-44	P ₂₆	3	6'-2"	1'-8"	2'-3"
" " 42-43-44	P ₂₇	3	6'-7"	1'-8"	2'-5 1/2"
" " 42-43-44	P ₂₈	3	7'-0"	1'-8"	2'-8"
" " 45 to 56 incl.	P ₃	3	5'-4"	1'-8"	1'-10"
" " " " "	P ₂₉	3	5'-10"	1'-8"	2'-1"
" " " " "	P ₃₀	3	6'-4"	1'-8"	2'-4"
" " " " "	P ₃₁	3	6'-10"	1'-8"	2'-7"
" " " " "	P ₃₂	3	7'-1"	1'-8"	2'-10"

NOTE:
This type of handrail to be used on all concrete structures on Job #6120 although a different type is shown on drawing #1036.

HANDRAIL SPACING ON END SPANS
Scale: 3/8" = 1'-0"



ELEVATION LONG TURNOUT
Scale: 1" = 1'-0"

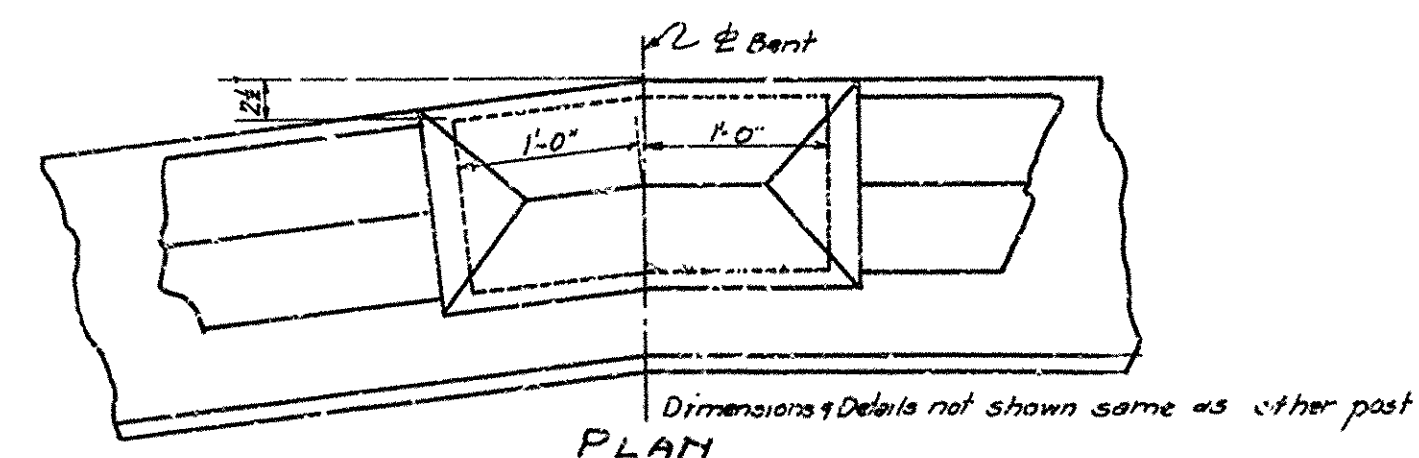


ELEVATION SHORT TURNOUT
Scale: 1" = 1'-0"

PLAN SHORT TURNOUT

HANDRAIL AND POSTS TO BE CLASS 'S' CONCRETE, MAXIMUM AGGREGATE 5/8"

PLAN LONG TURNOUT
Scale: 1" = 1'-0"



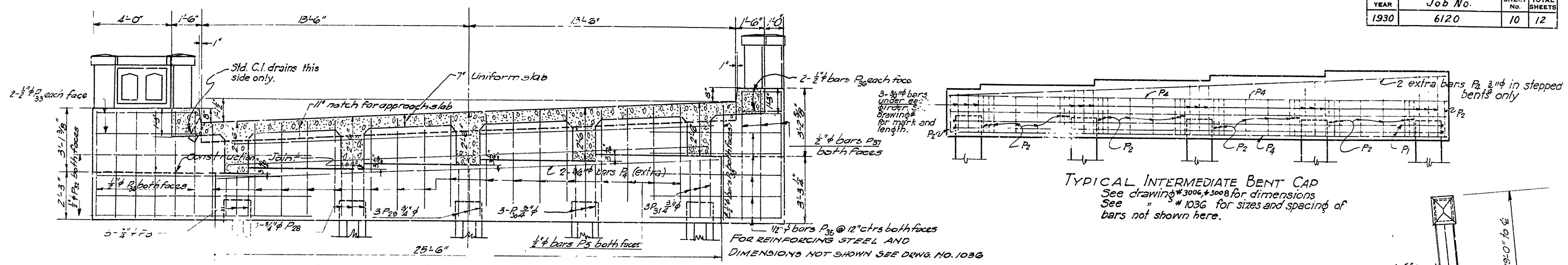
SKETCH OF POSTS AT BENTS 29 & 30
Scale: 1" = 1'-0"

DETAILS OF HANDRAIL TURNOUTS & BENDING DIAGRAMS
RELIEF & APPROACH TO WHITE RIVER BR. AT DEVALLS BLUFF
MESA-BRASSFIELD ROAD
PRAIRIE COUNTY,
ROUTE 70 SEC. 16

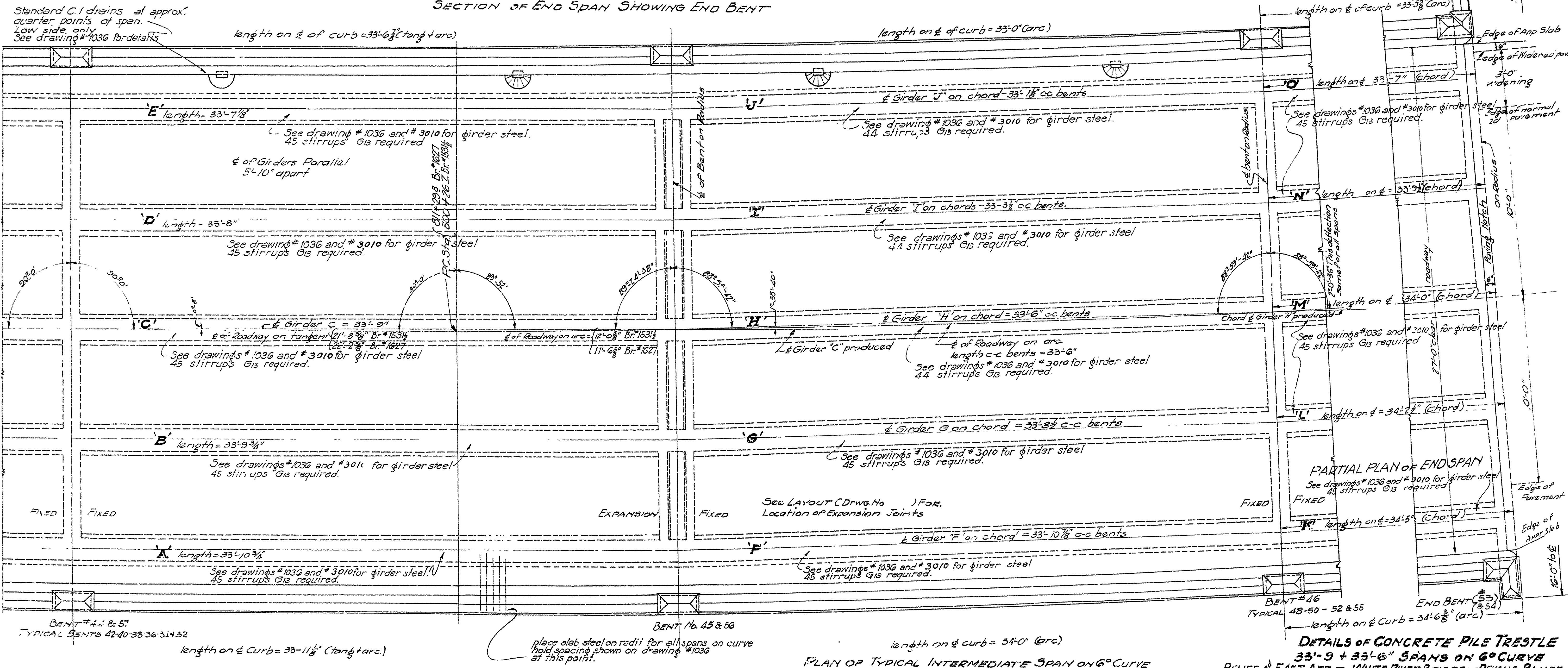
ARKANSAS STATE HIGHWAY COMMISSION
LITTLE ROCK, ARK.
Drawn By: F.A.W. Date: 1-3-31
Traced By: F.M.M. Date: 1-7-31
Checked By: _____ Date: _____
Scale: 1/4" = 1'-0"
BRIDGE NO. 1574-1626 DRAWING NO. 3010
1627

N.B. Lewis
BRIDGE ENGINEER

FISCAL YEAR	Job No.	SHEET	TOTAL SHEETS
1930	6120	10	12



TYPICAL INTERMEDIATE BENT CAP
 See drawing #3006, #3008 for dimensions
 See #1036 for sizes and spacing of bars not shown here.



DETAILS OF CONCRETE PILE TRESTLE
 33'-9 + 33'-6" SPANS ON 6° CURVE
 RELIEF EAST APP. TO WHITE RIVER BRIDGE AT DEWALL'S BLUFF
 MESA BRASSFIELD ROAD
 PRAIRIE COUNTY
 ROUTE 70 SEC. 16

ARKANSAS STATE HIGHWAY COMMISSION
 LITTLE ROCK, ARK.
 Drawn By: *LAW* Date: 1-22-31
 Traced By: *M.K.W.* Date: 1-6-31
 Checked By: _____ Date: _____
 Scale: 1/2" = 1'-0"
 BRIDGE NO. 1531 1/2, 162T DRAWING NO. 3009

NOTE: This drawing is to be used in conjunction
 with Drawings No. 1036, No. 3006, No. 3008 & No. 3010
 Drawing No. 1036 shows std. 34'-0" RC. Pile Trestle
 Drawing No. 3006 shows Super-elevation Transition, and dimensions of caps on Bents
 Drawing No. 3010 shows Hand-rail spacing, Turnout Details and special reinforcing steel

M.R. Lawrence
 BRIDGE ENGINEER

Standard C.I. drains at approx. quarter points of span. Low side only. See drawing #1036 for details.

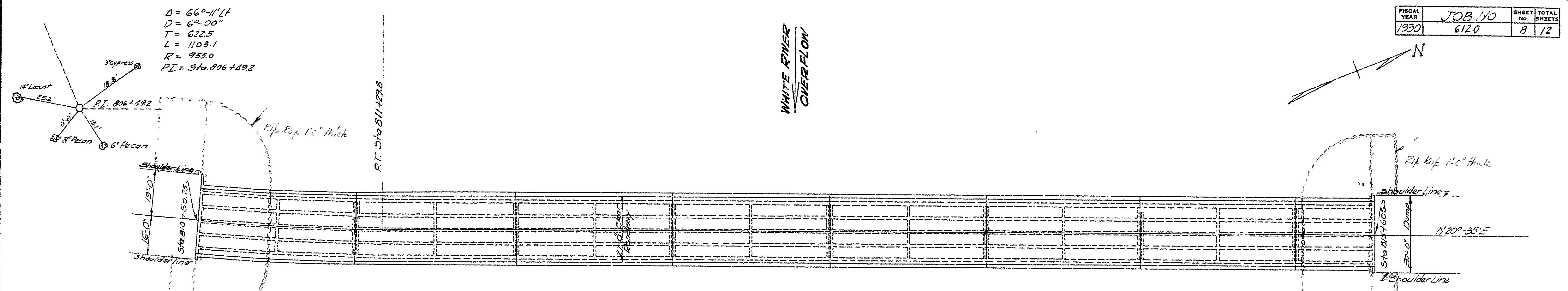
SECTION OF END SPAN SHOWING END BENT

PLAN OF SPAN FROM BENT #44 TO #45 & 51 TO 56

PLAN OF TYPICAL INTERMEDIATE SPAN ON 6° CURVE

DETAILS OF CONCRETE PILE TRESTLE

FISCAL YEAR	JOB NO	SHEET NO	TOTAL SHEETS
1930	6120	5	12



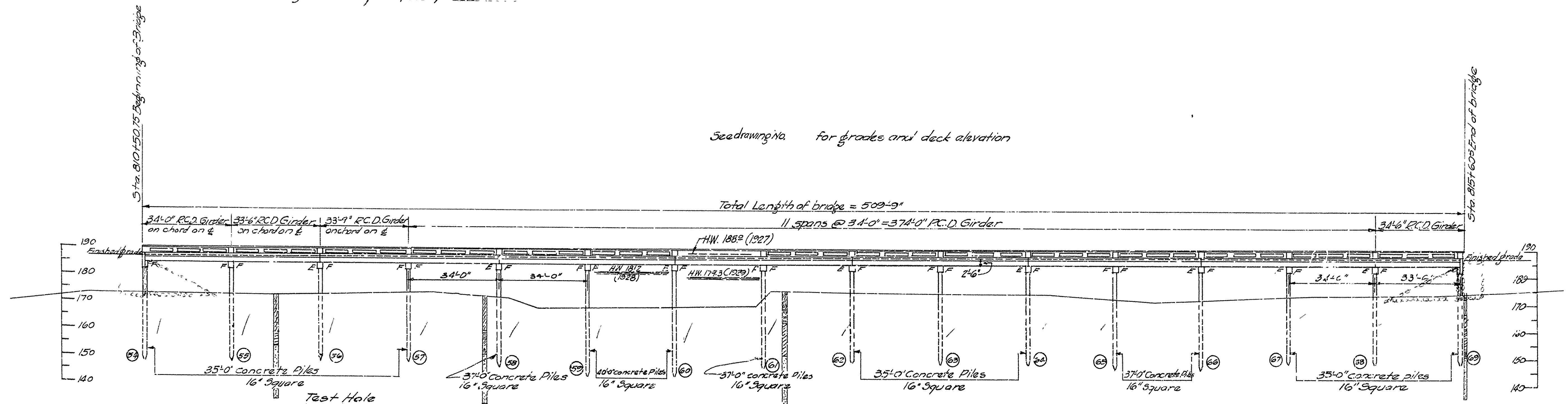
General Notes
 All exposed corners to have 3/8 chamfer unless otherwise noted.
 Concrete handrail to be Class 5 concrete, maximum aggregate 3/8"
 All concrete except handrails to be Class 5
 Concrete piling to be class 5 and to have a minimum capacity of 30 tons each.
 Reinforcing steel to be deformed bars of structural or intermediate grade.
 Shop List and Bending Diagrams must be submitted and approved before fabrication is begun.
 Roadway drains and expansion devices to be paid for at unit prices bid for reinforcing steel.
 Specifications: Arkansas Standard Road and Bridge Specifications adopted May 30, 1925 and revised, 3008, 3009, & 3010.
 For details, see drawing No. 1036, 3008, 3009, & 3010.

ORIGINAL QUANTITIES

Item No. 1295P	Earth excavation	200 cu yds
" 13	Dry excavation for structures	25 cu yds
" 54	Class 5 concrete	676.23 cu yds
" 55	Reinforcing steel	185,600 lbs.
" 60	15P Precast concrete piling - 16" square	2570 lin ft
" 61	15P Rip rap, 1' thick	193 cu yds
" 74	Concrete railing for structures	1024 lin ft

PLAN

See drawing No. for grades and deck elevation



ELEVATION

Test Hole
 30' Rt. Sta. 811+00
 Gr. elev. 173.6
 15'-0" Brown clay
 5'-0" Fine blue sand & trace of clay
 10'-0" Fine blue sand (packed)

BM #34 Elev 184.23
 Top of east wall of north east corner concrete bridge over B. you

Test Hole
 2 Sta. 811+83
 Gr. elev. 172.7
 13'-0" Brown clay
 3'-0" Yellow sand & clay
 6'-0" Fine blue sand & trace of clay
 18'-0" Fine blue sand (packed)

Test Hole
 2 Sta. 811+83
 Gr. elev. 172.7
 13'-0" Brown clay
 3'-0" Yellow sand & clay
 6'-0" Fine blue sand & trace of clay
 18'-0" Fine blue sand (packed)

Test Hole
 60' Rt. Sta. 815+60
 Gr. elev. 172.2
 7'-0" Brown clay
 5'-0" Yellow sand & clay
 8'-0" Yellow sand and trace of clay
 2'-0" Fine yellow sand
 16'-0" Fine blue sand (packed)
 Trace of lignite

LAYOUT
BRIDGE No. 1627
MESA BRASSFIELD ROAD
PRAIRIE CO.
ROUTE 70 SEC. ,
ARKANSAS STATE HIGHWAY COMMISSION
LITTLE ROCK, ARK.
 Drawn By: F.P.B. Date: 12-22-30
 Traced By: M.K.W. Date: 12-22-30
 Checked By: _____ Date: _____
 Scale: 1 in. = 20 ft.
BRIDGE NO. 1627 DRAWING NO. 3007

M.B. Garner
 BRIDGE ENGINEER

FISCAL YEAR	Job No.	SHEET NO.	TOTAL SHEETS
1930	6120	7	12

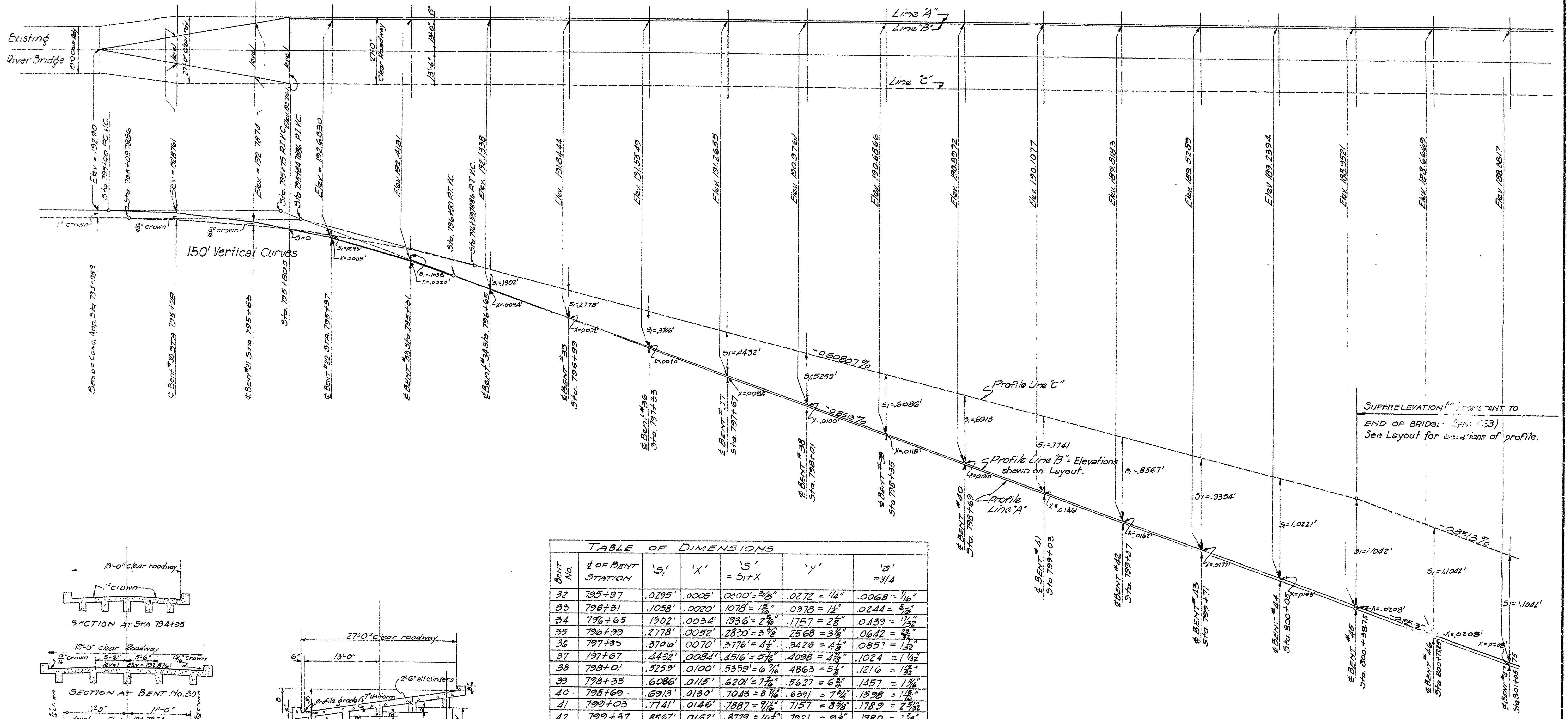
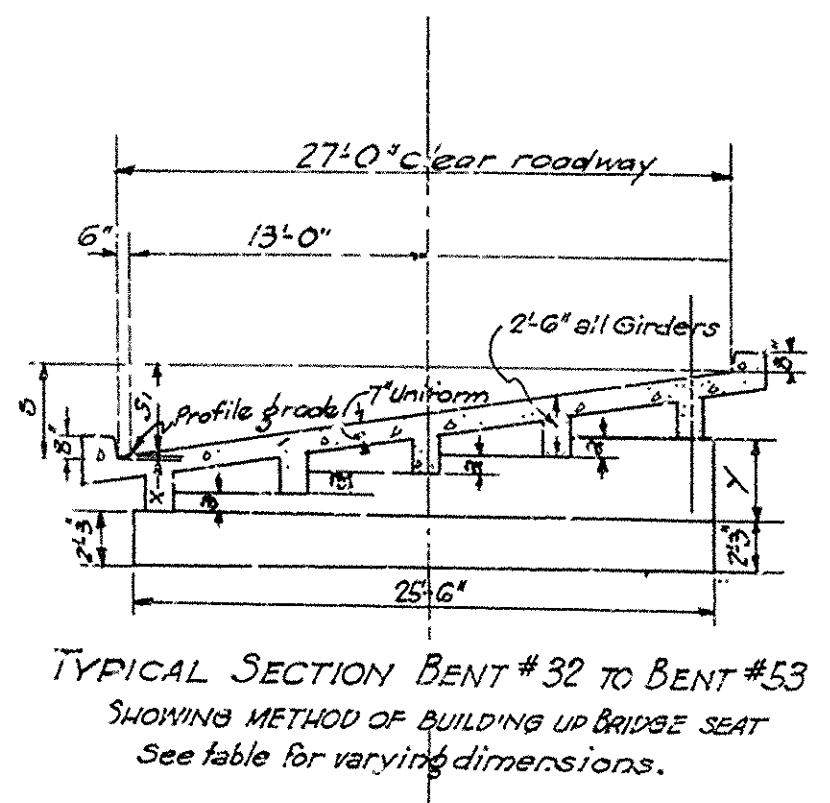
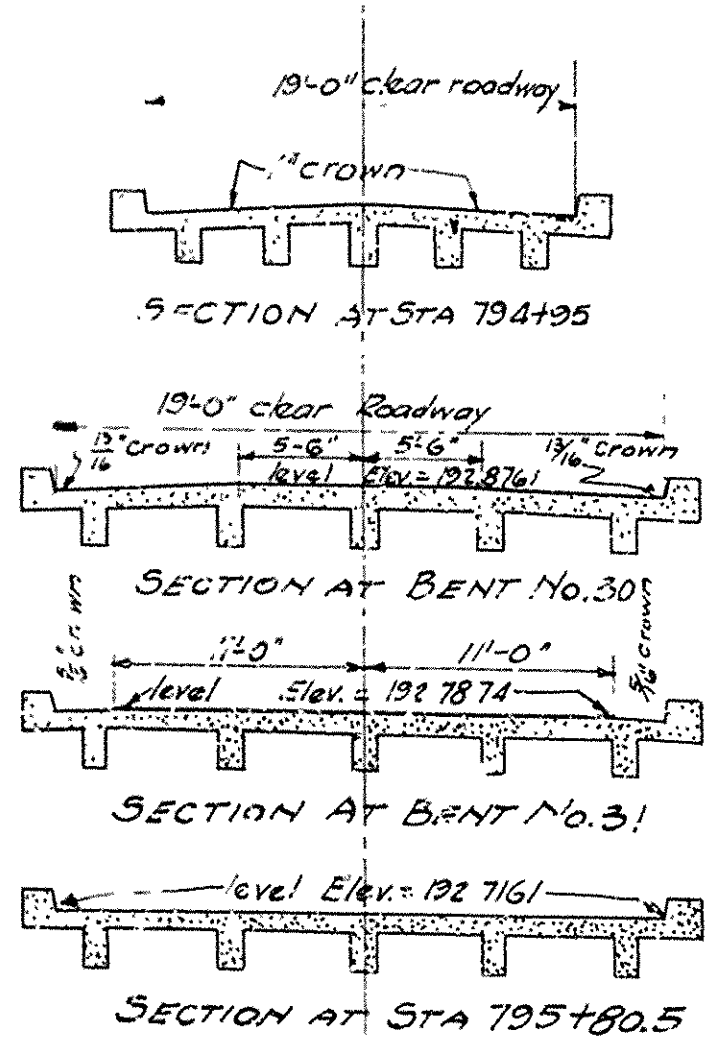


TABLE OF DIMENSIONS

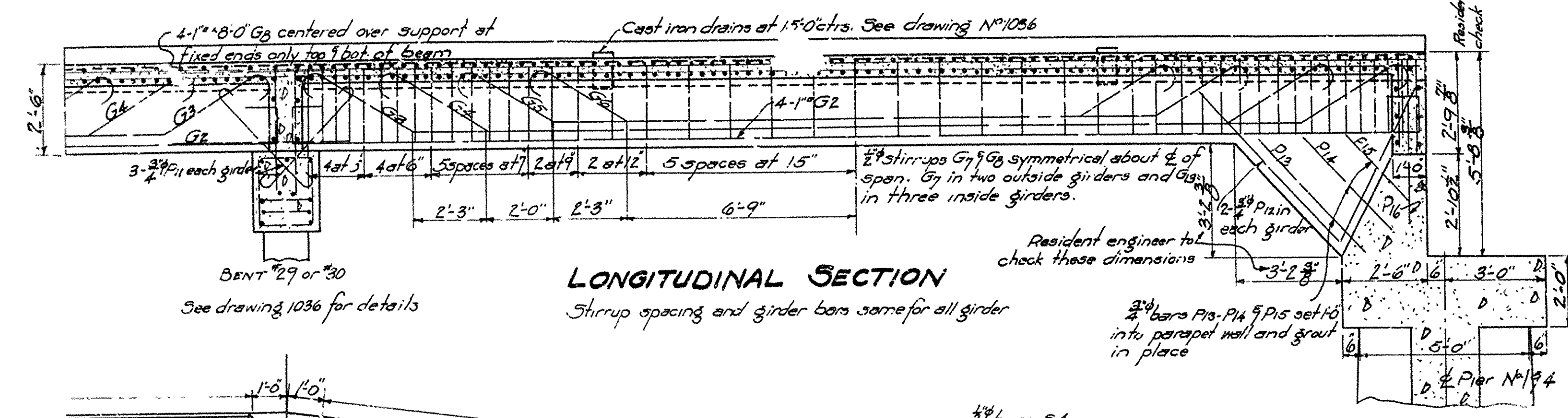
Bent No.	E OF BENT STATION	'S'	'X'	'S' = S ₁ +X	'Y'	'a' = y/A
32	795+97	.0295'	.0005'	.0300' = 3/8"	.0272' = 1/4"	.0068' = 1/16"
33	796+31	.1058'	.0020'	.1078' = 1 1/8"	.0978' = 1 1/8"	.0244' = 5/16"
34	796+65	.1902'	.0034'	.1936' = 2 3/8"	.1757' = 2 3/8"	.0439' = 7/16"
35	796+99	.2778'	.0052'	.2830' = 3 3/8"	.2568' = 3 1/8"	.0642' = 1 1/8"
36	797+33	.3706'	.0070'	.3776' = 4 1/2"	.3426' = 4 1/8"	.0857' = 1 3/8"
37	797+67	.4452'	.0084'	.4536' = 5 1/8"	.4098' = 4 1/8"	.1024' = 1 1/2"
38	798+01	.5259'	.0100'	.5359' = 6 1/2"	.4863' = 5 1/8"	.1216' = 1 3/8"
39	798+35	.6086'	.0115'	.6201' = 7 1/8"	.5627' = 6 3/8"	.1457' = 1 1/2"
40	798+69	.6913'	.0130'	.7043' = 8 1/8"	.6391' = 7 3/4"	.1598' = 1 1/2"
41	799+03	.7741'	.0146'	.7887' = 9 1/2"	.7157' = 8 3/8"	.1789' = 2 1/8"
42	799+37	.8567'	.0162'	.8729' = 10 1/2"	.7921' = 9 3/4"	.1980' = 2 1/8"
43	799+71	.9394'	.0177'	.9571' = 11 1/2"	.8685' = 10 3/8"	.2171' = 2 1/8"
44	800+05	1.0221'	.0193'	1.0414' = 12 1/2"	.9450' = 11 3/4"	.2363' = 2 3/8"
45	800+38.75	1.1042'	.0208'	1.1250' = 13 1/2"	1.0208' = 12 1/4"	.2552' = 3 1/8"
46	800+72.25	"	"	"	"	"
47	801+05.75	"	"	"	"	"
48	801+39.25	"	"	"	"	"
49	801+72.75	"	"	"	"	"
50	802+06.25	"	"	"	"	"
51	802+39.75	"	"	"	"	"
52	802+73.25	"	"	"	"	"
53	803+07.25	"	"	"	"	"



NOTE:
Standard bent cap at Bents #30 & 31
Bridge seat built up as shown Bents #32 to #53

DETAILS OF
SUPERELEVATION EAST APPROACH
TO WHITE RIVER BRIDGE AT DEVALLS BLUFF
MESA-BRASSFIELD ROAD
PRAIRIE COUNTY
ROUTE 70 SEC. 16
ARKANSAS STATE HIGHWAY COMMISSION
LITTLE ROCK, ARK.
Drawn By: E.A.W. Date: 12-1-30
Traced By: E.A.W. Date: 1-2-31
Checked By: _____ Date: _____
BRIDGE ENGINEER
DRAWING NO. 3006

For handrail details see drawing N°



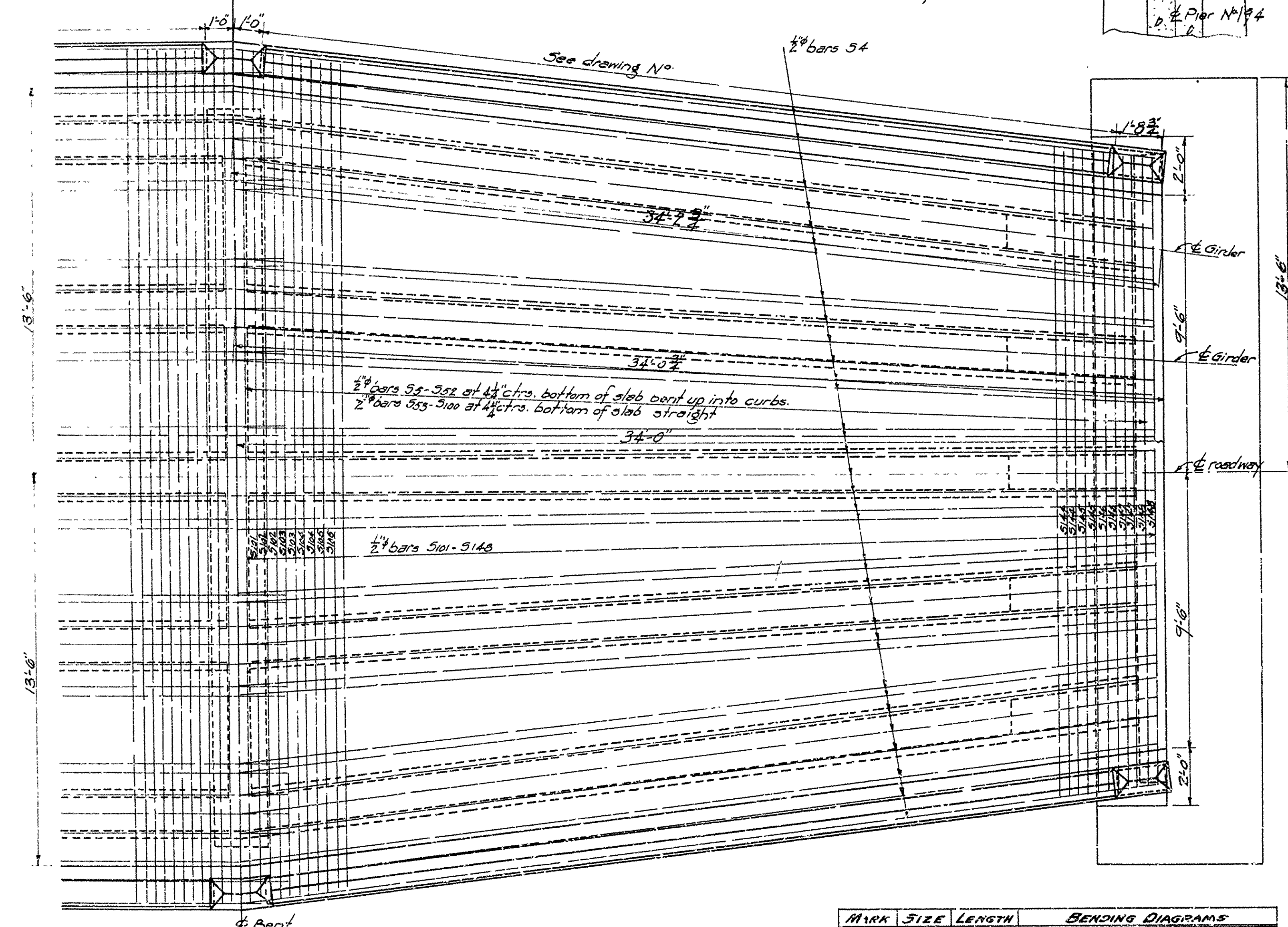
LONGITUDINAL SECTION

BENT 29 or 30
See drawing 1036 for details

Shirrup spacing and girder bars same for all girder

Resident engineer to check these dimensions

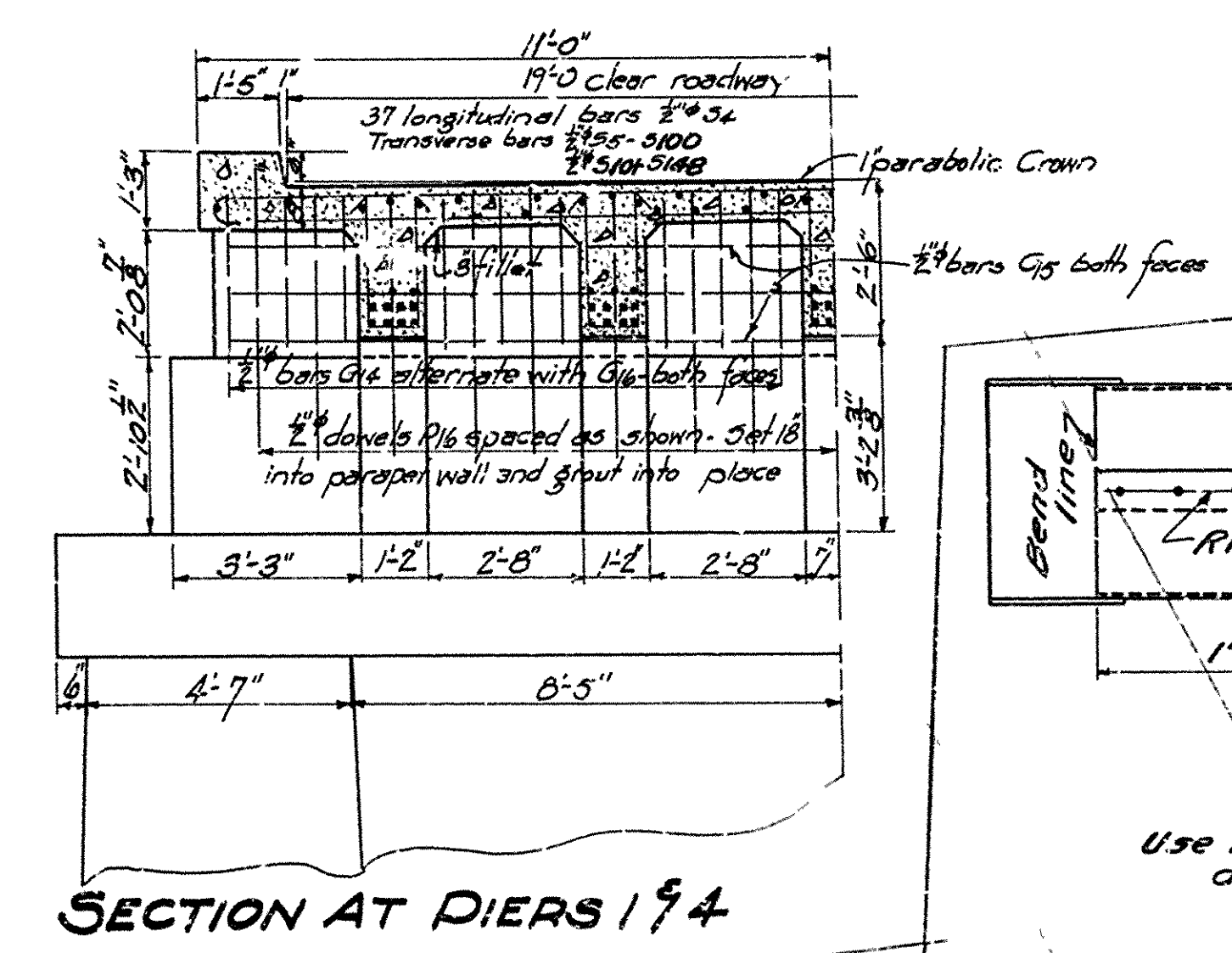
2\"/>



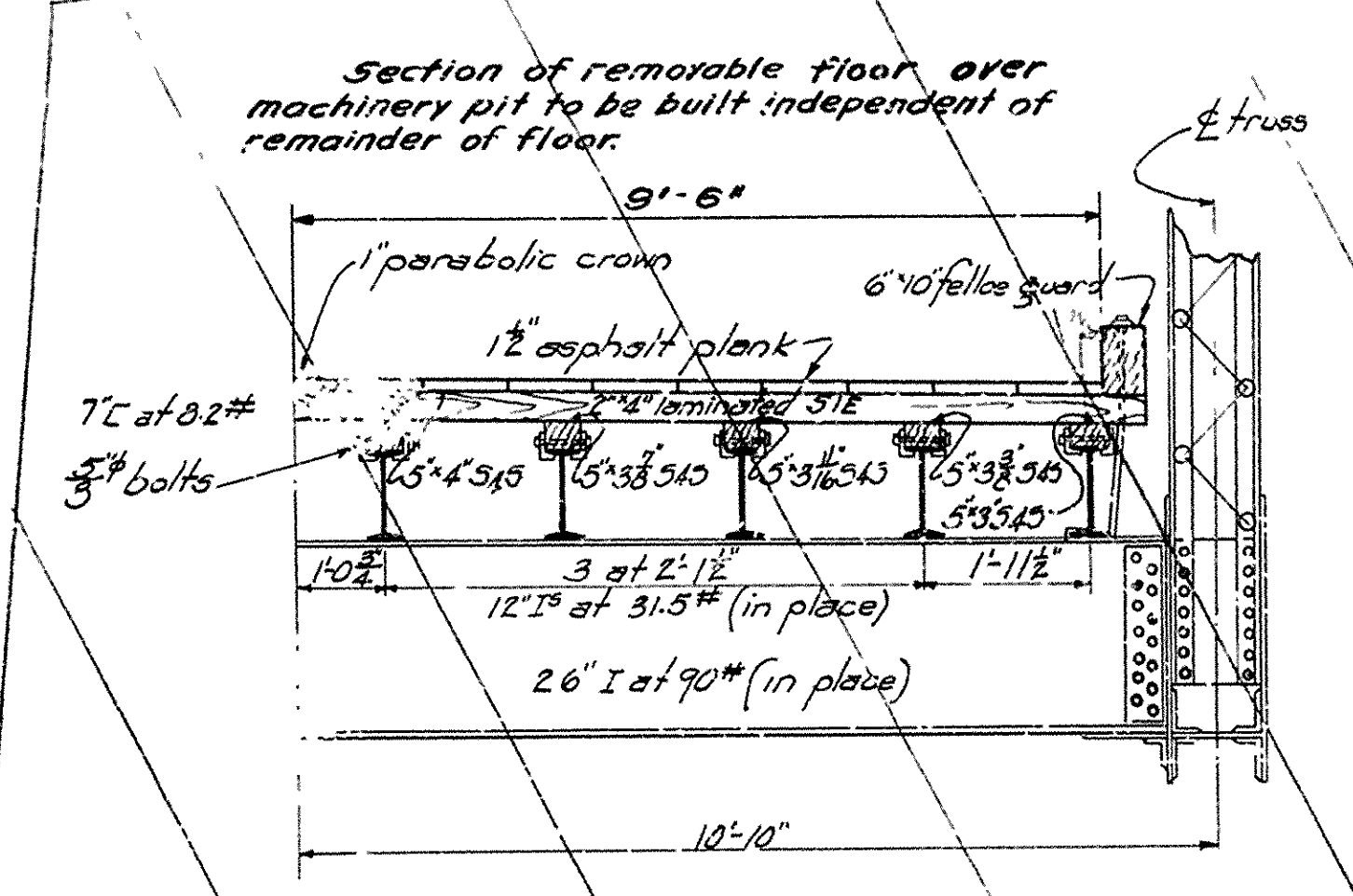
PLAN

MARK	SIZE	LENGTH	BENDING DIAGRAMS
S5-S32	2\"/>		
S101-S143	2\"/>		

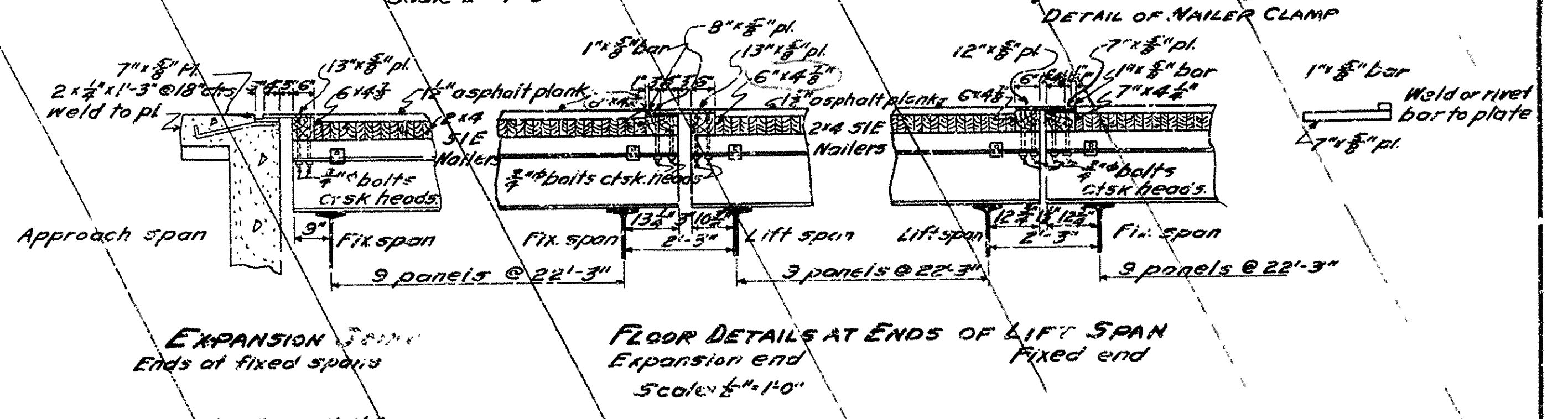
See Drawg. No. 1036 for other bars



SECTION AT DIERS 194



TYPICAL SECTION OF TRUSS SPAN

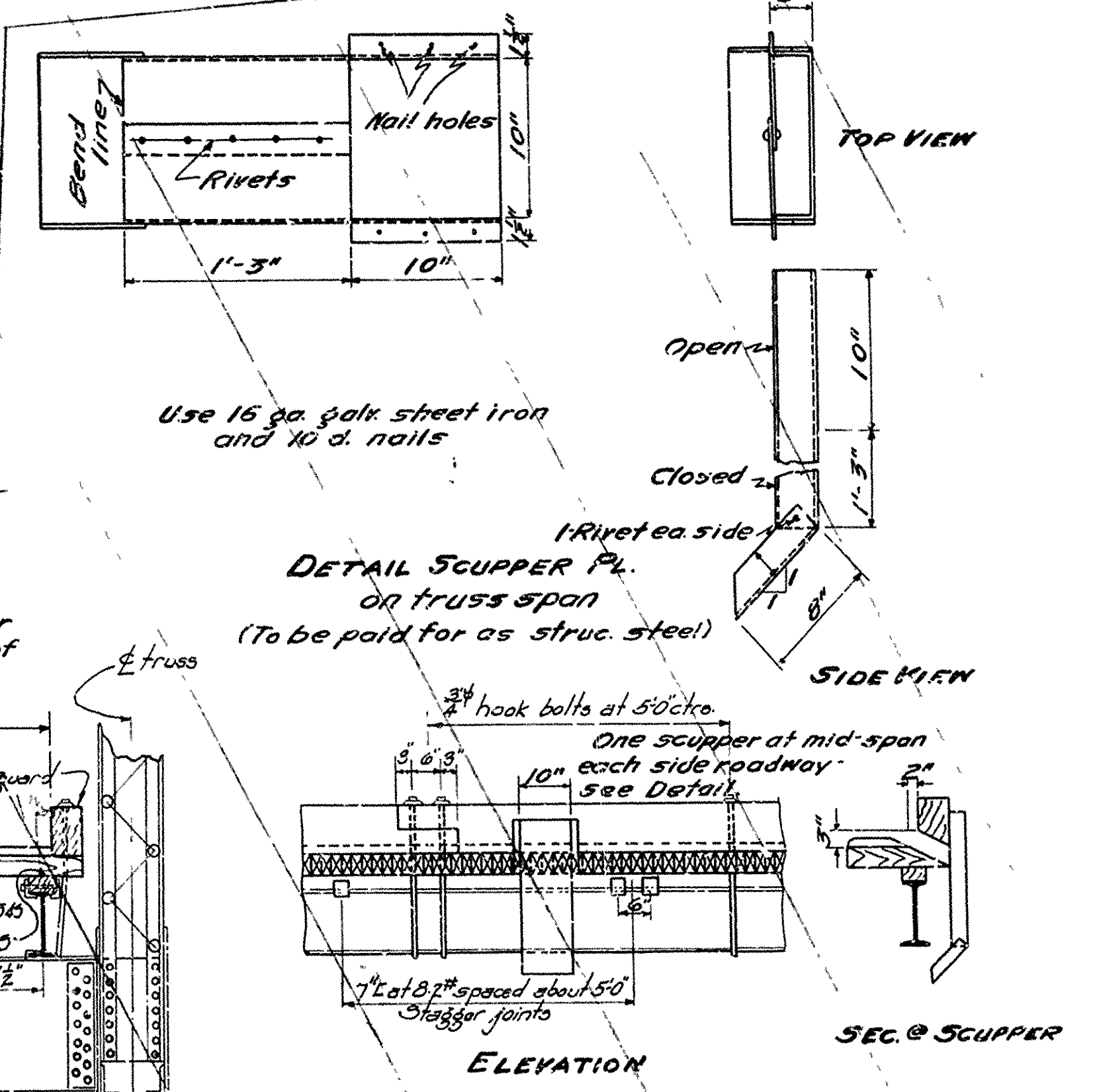


EXPANSION JOINT

FLOOR DETAILS AT ENDS OF LIFT SPAN

DETAIL OF HOOK BOLT

Note: Measurement for payment of laminated decking shall be computed at 80 (eighty) Ft. Bk. per lineal foot at bridge ends of decking to be flush.
All pieces of decking to be full length.
Spike each piece of decking to each adjacent piece once between each nailer with 30 d. spikes. Each piece to be spiked to each nailer with 30 d. spikes.



DETAIL SCUPPER PL. OR TRUSS SPAN

ELEVATION

DETAIL OF NAILER CLAMP

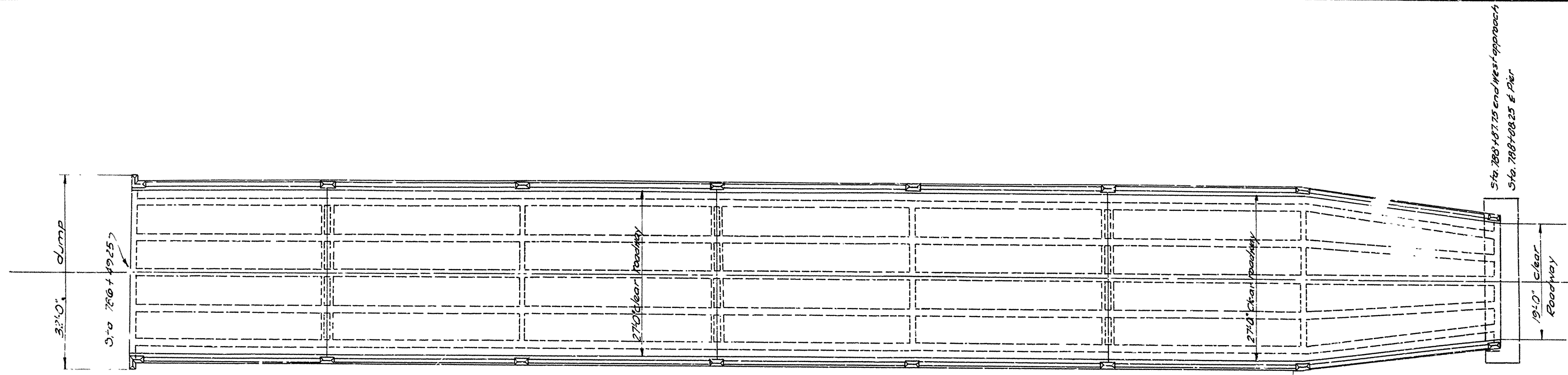
DETAILS OF APPROACH SLAB AND REPAIRS TO WHITE RIVER BRIDGE
MESR. BRASSFIELD ROAD
DRAIRIE COUNTY
ROUTE 10 SEC. 10

ARKANSAS STATE HIGHWAY COMMISSION
LITTLE ROCK, ARK.

Drawn By: F.P.B. Date: _____
Traced By: _____ Date: _____
Checked By: _____ Date: _____
BRIDGE NOS. 1531-1531 1/2 9 DRAWING NO. 3005
1931

M.R. Lanier
BRIDGE ENGINEER

FISCAL YEAR	JOB No.	SHE No.	TOTAL SHEETS
1930	6120	4	12

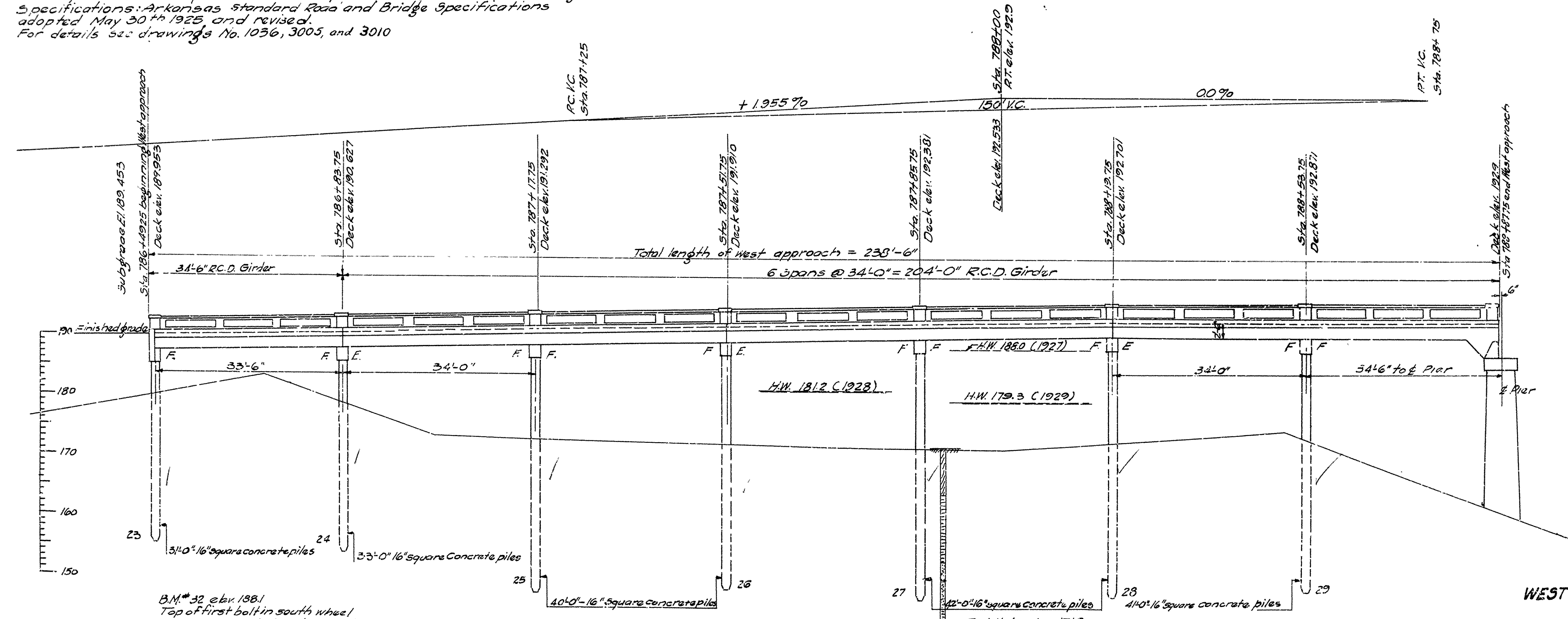


GENERAL NOTES

All exposed corners to have 3/4" chamfer unless otherwise noted.
 Concrete handrail to be Class "S", maximum aggregate 3/8".
 All concrete except handrails to be class "S".
 Concrete piling to be Class "S" and to have a minimum capacity of 30 tons each.
 Reinforcing steel to be deformed bars of structural or intermediate grade.
 Shop list and bending diagrams must be submitted and approved before fabrication is begun.
 Roadway drains and expansion devices to be paid for at unit prices bid for reinforcing steel.
 Specifications: Arkansas Standard Road and Bridge Specifications adopted May 30th 1925, and revised.
 For details see drawings No. 1036, 3005, and 3010.

ORIGINAL QUANTITIES

Item No.	Description	Quantity
5P+12	Earth Excavation	100 Cu Yds
13	Dry Excavation for Structures	15 " "
54	Class "S" Concrete	30,764 " "
55	Reinforcing Steel	86,100
5P+68	Precast Concrete Piling	13.45 Lin. Ft.
5P+63	Rip Run (1/4" thick)	63 Cu Yds
74	Concrete Railing for Structures	484 Lin. Ft.



B.M. # 32 elev. 188.1
 Top of first bolt in south wheel
 guard West end of White river bridge

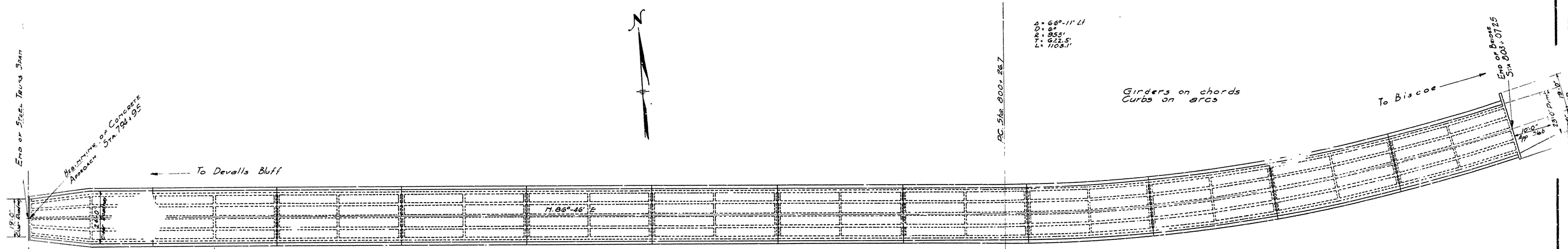
Test Hole elev. 171.8
 25' 1st Sta. 787+90
 8'-0" Yellow sandy clay
 11'-0" Med. Yellow sand
 1'-0" Fine blue sand (packed)
 1'-0" Fine blue sand + 1/2" pack of lignite (packed)
 15' 2" 1/2" gray sand (packed)

LAYOUT
 WEST APPROACH TO WHITE RIVER BRIDGE
 MESA-BRASSFIELD ROAD
 PRAIRIE COUNTY
 ROUTE 70 SEC. 16

ARKANSAS STATE HIGHWAY COMMISSION
 LITTLE ROCK, ARK.
 Drawn By: *F.R.B.* Date: 12-27-30
 Traced By: *M.K.W.* Date: 1-23-31
 Checked By: _____ Date: _____
 BRIDGE No. 1531 1/2 DRAWING No. 3003

M.B. Lawrence
 BRIDGE ENGINEER

Scale: 1 in. = 10' ft.



Std C.I drains both sides Std C.I drains low side only
See Drawing No. 1036 for details

ORIGINAL QUANTITIES

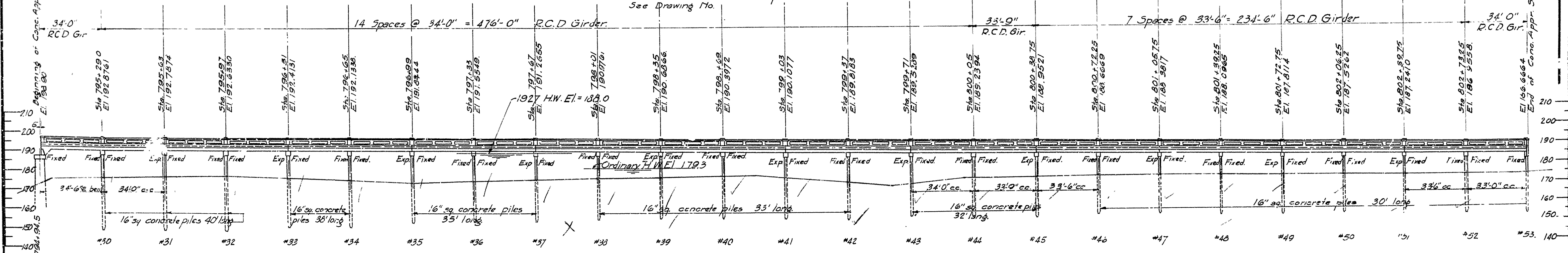
Item No. 5P+12	Earth Excavation	100 Cu Yds.
Item No. 13	Dry Excavation for structures	15 " "
Item No. 54	Class "5" Concrete	1207 cu. "
Item No. 55	Reinforcing Steel	293,450 lbs.
Item No. 5P+68	Precast concrete piling	4010 Lin. Ft.
Item No. 5P+69	Rip Rap (1 ft. thick)	85 Cu Yds.
Item No. 74	Concrete railing for structures	1630 Lin. Ft.

PLAN OF EAST APPROACH

GENERAL NOTES
 All exposed corners to have 3/4" Chamfer unless otherwise noted.
 Concrete handrails to be Class "5" maximum aggregate 5/8"
 All concrete except handrails to be Class "3"
 Concrete piling to be Class and to have a minimum capacity of 30 tons each.
 Reinforcing steel to be deformed bars of structural or intermediate grade.
 Shop list and bending diagrams must be submitted. Approved before fabrication is begun.
 Roadway drains and expansion devices to be paid for at unit prices bid for reinforcing steel.
 Specifications: Arkansas Standard Road and Bridge Specifications adopted Nov. 30th 1925 and revised.
 For details see drawing No's #1036, #3006, #3009, and #3010

812'-3" Total length of East Approach

Elevations shown are profile elevations of deck.
See Drawing No.



ELEVATION OF EAST APPROACH

B.M. No. 33 - El. 188.06
Top of 2nd bolt in south wheel guard, east end of White River bridge.

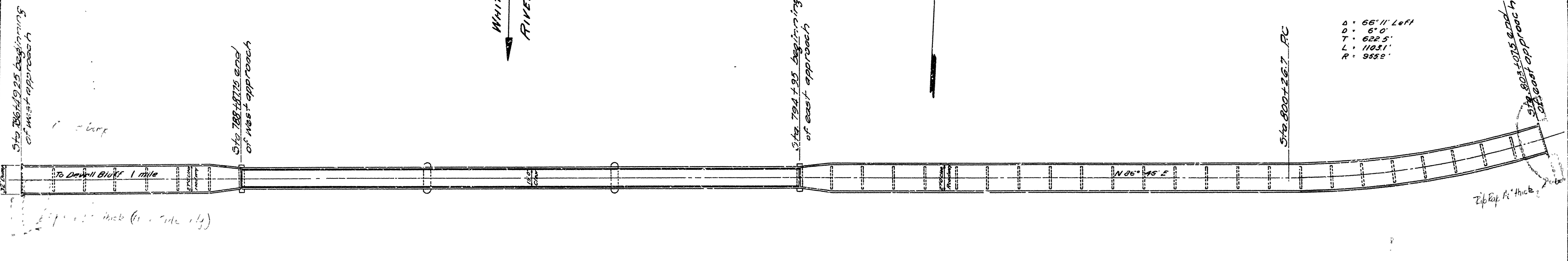
LAYOUT OF
 EAST APPROACH TO
 WHITE RIVER BRIDGE AT DEVALLS BLUFF
 MESA-BRASFIELD ROAD
 PRAIRIE COUNTY
 ROUTE 70 SEC. 16

ARKANSAS STATE HIGHWAY COMMISSION
 LITTLE ROCK, ARK.

Drawn By: E.A.W. Date: 1-12-31
 Traced By: E.M.P. Date: 1-12-31
 Checked By: _____ Date: _____
 Scale: 1 in. = 25 ft.
 BRIDGE NO. 153 1/2 DRAWING NO. 3004

M.B. Lewis
 BRIDGE ENGINEER

PAINT CONTRACT JOB NO. 12-52(1)



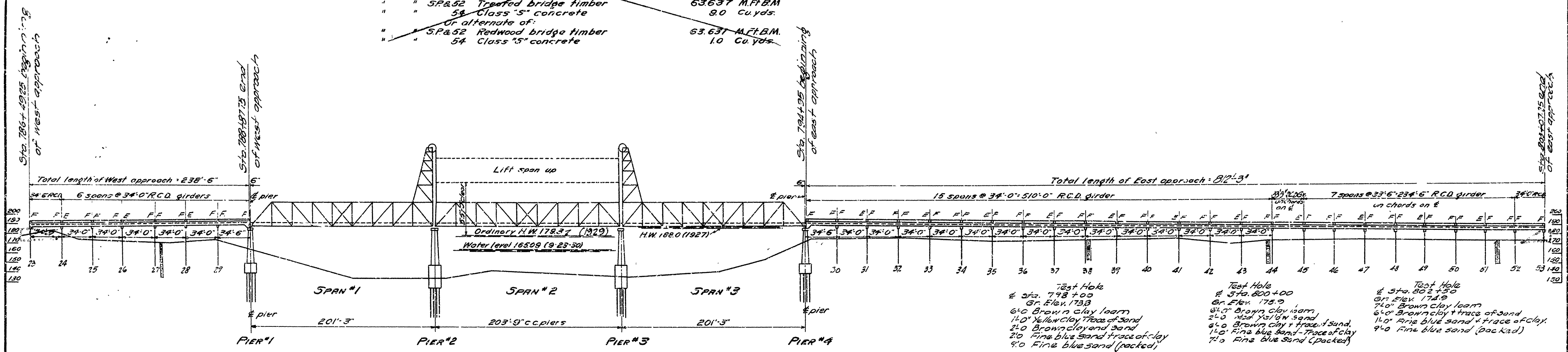
PLAN
Bridge No 1531 1/2 R.C.D. girder approach

PLAN
Bridge No 1531. Truss spans in place
Excepted from Br. Job No. 6120

PLAN
Bridge No 1531 1/2 R.C.D. girder approach

QUANTITIES FOR BRIDGE No 1531:

Item No.	36 Structural steel (Truss bridges)	2856 #
"	" 5P 12" asphalt plank	1280 Sq. yds.
"	" 5P Maintaining traffic	Lump sum
"	" 5P Cleaning and painting existing struc.	Lump sum
Alternate of:		
"	" SP&52 Treated bridge timber	63637 M.F.T.B.M.
"	" 54 Class "5" concrete	9.0 Cu. yds.
Or alternate of:		
"	" SP&52 Redwood bridge timber	63.637 M.F.T.B.M.
"	" 54 Class "5" concrete	1.0 Cu. yds.



ELEVATION
Bridge No 1531 1/2 R.C.D. girder approach

ELEVATION
Bridge No 1531. Truss spans and piers in place
Excepted from Br. Job No. 6120

ELEVATION
Bridge No 1531 1/2 R.C.D. girder approach

Test Hole
25' Pt. Sta. 787+90
Gr. Elev. 171.8
8'-0" Yellow sandy clay
1'-0" Med. Yellow sand
3'-0" Fine blue sand (packed)
9'-0" Fine blue sand + trace of lignite
2'-5" coarse grey sand (Packed)

Test Hole
30' Pt. Sta. 794+95
Gr. elev. 176.0
7'-0" Brown sandy loam
9'-0" Brown sandy clay
4'-0" Fine blue sand (about 25% clay)
4'-0" Blue clay + Fine blue sand
2'-0" Fine blue sand and trace of lignite (packed)
1'-0" Fine blue sand (packed) stable to top
clay due to packed sand and water pressure
from river.

B.M. # 33 - elev 188.06.
Top 2nd bolt in South wheel guard,
East end White River bridge.

Test Hole
± Sta. 798+00
Gr. Elev. 173.8
6'-0" Brown clay loam
1'-0" Yellow clay trace of sand
2'-0" Brown clay and sand
2'-0" Fine blue sand trace of clay
9'-0" Fine blue sand (packed)

Test Hole
± Sta. 800+00
Gr. Elev. 175.9
7'-0" Brown clay loam
6'-0" Brown clay loam
2'-0" Med. Yel. loam sand
6'-0" Brown clay + trace of sand
1'-0" Fine blue sand + trace of clay
7'-0" Fine blue sand (packed)

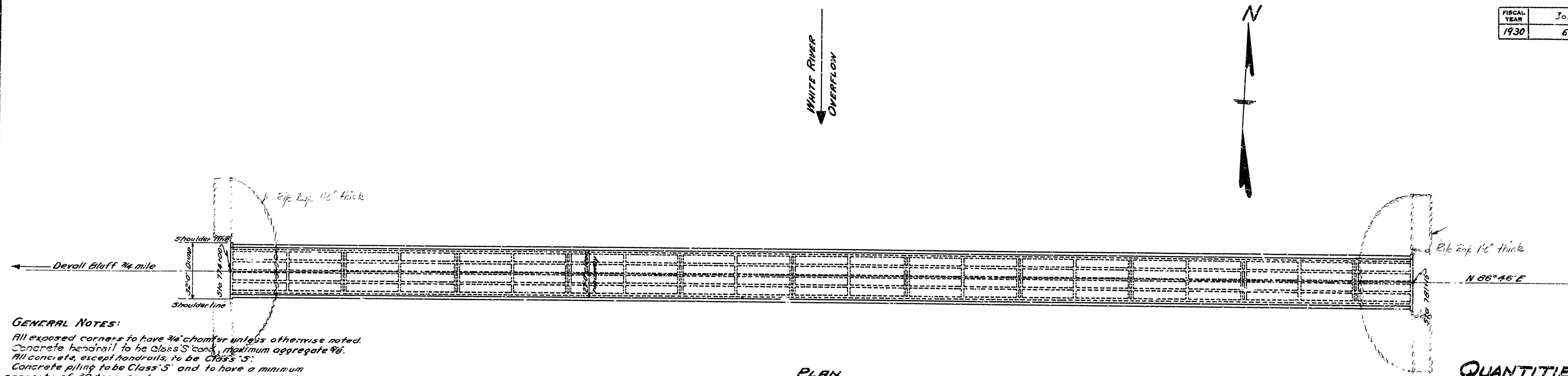
Test Hole
± Sta. 802+50
Gr. Elev. 172.9
7'-0" Brown clay loam
6'-0" Brown clay trace of sand
1'-0" Fine blue sand + trace of clay
9'-0" Fine blue sand (Pac. Red)

**GENERAL LAYOUT
APPROACHES TO WHITE RIVER BRIDGE
MESA - BRASSFIELD ROAD
PRAIRIE CO.**

ROUTE 70 SEC. 16
ARKANSAS STATE HIGHWAY COMMISSION
LITTLE ROCK, ARK.

Drawn By: *EPB* Date: 11-20-30
Traced By: *W.M.H.* Date: 1-28-31
Checked By: _____ Date: _____
BRIDGE NO. 1531 1/2 DRAWING NO. 3002
1/16" = 50'

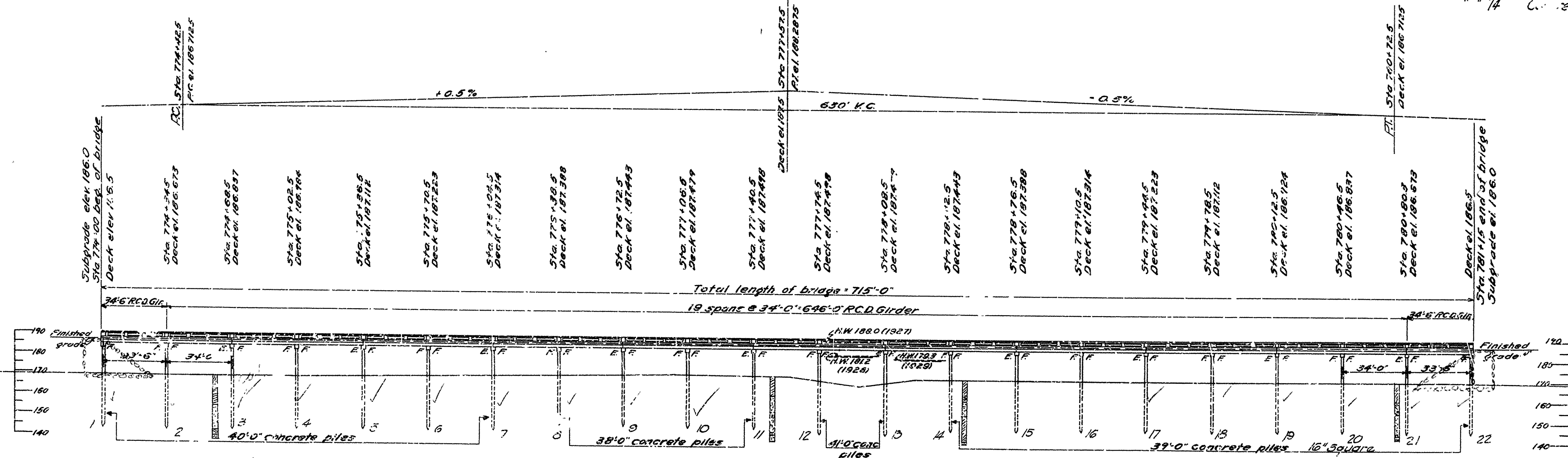
N.B. Hoover
BRIDGE ENGINEER



GENERAL NOTES:
 All exposed corners to have 3/4 chamfer unless otherwise noted.
 Concrete handrail to be Class 'S' conc., maximum aggregate 3/8".
 All concrete, except handrails, to be Class 'S'.
 Concrete piling to be Class 'S' and to have a minimum capacity of 30 tons each.
 Reinforcing steel to be deformed bars of structural or intermediate grade.
 Shop list and bending diagrams must be submitted and approved before fabrication is begun.
 Roadway drains and expansion devices to be paid for at unit prices bid for reinforcing steel.
 Specifications: Arkansas Standard Road and Bridge Specifications, adopted May 30, 1925 and revised.
 For details, see drawings: No 1036 and 3010.

QUANTITIES (181-5114)

Item No. 1235.P	Earth excavation	200 cu yds
" 13	Dry excavation for structures	25 cu yds
" 54	Class 'S' concrete	92,511 cu yds
" 55	Reinforcing steel	257,300 lbs.
" 68	15P Precast concrete piling 16"	4,325 lin. ft.
" 69	15P Rip rap 1' thick	258 cu yds
" 74	Cast-iron railing for structures	14,35 lin. ft.



Test Hole
 60' Lt. Sta. 772+60
 Gr. Elev. 170.1
 8'-0" Brown clay loam
 8'-0" Yellow clay + little sand
 12'-0" Fine blue sand (packed)
 3'-3" Medium gray sand (packed)
 1'-7" Fine blue sand + shells

B.M. * 32 - elev 188.1
 Top of first bolt in south wheel guard, west end White River bridge.

ELEVATION

Test Hole
 4 Sta. 778+50
 Gr. Elev. 170.7
 8'-0" Brown clay loam
 8'-0" Yellow clay + little sand
 10'-0" Fine blue sand (packed)
 1'-0" Fine blue sand
 3'-0" Medium gray sand (packed)

Test Hole
 4 Sta. 778+50
 Gr. Elev. 170.7
 8'-0" Brown clay loam
 8'-0" Yellow clay + little sand
 7'-0" Fine blue sand about 15% clay
 12'-0" Fine blue sand (packed)
 1'-0" Med. gray sand (packed)

Test Hole
 4 Sta. 780+75
 Gr. Elev. 165.8
 8'-0" Brown clay and loam
 8'-0" Yellow clay + little sand + trace of clay
 12'-0" Fine blue sand (packed)
 0'-5" Medium gray sand (packed)
 1'-5" Medium gray sand (packed)

LAYOUT
BRIDGE No. 1626
MESA-BRASSFIELD ROAD
PRAIRIE Co.
ROUTE 70 SEC. 16

ARKANSAS STATE HIGHWAY COMMISSION
 LITTLE ROCK, ARK.
 Drawn By: *E.E.E.* Date: 12-12-30
 Traced By: *H.W.H.* Date: 12-12-30
 Checked By: _____ Date: _____
 Scale: 1 in. = 50 ft.
BRIDGE No. 1626 **DRAWING NO. 3001**

H.W.H.
 BRIDGE ENGINEER