

FISCAL YEAR	USB No.	SHEET NO.	TOTAL SHEETS
1930	6117	1	6

STATE OF ARKANSAS
STATE HIGHWAY COMMISSION

INDEX OF SHEETS

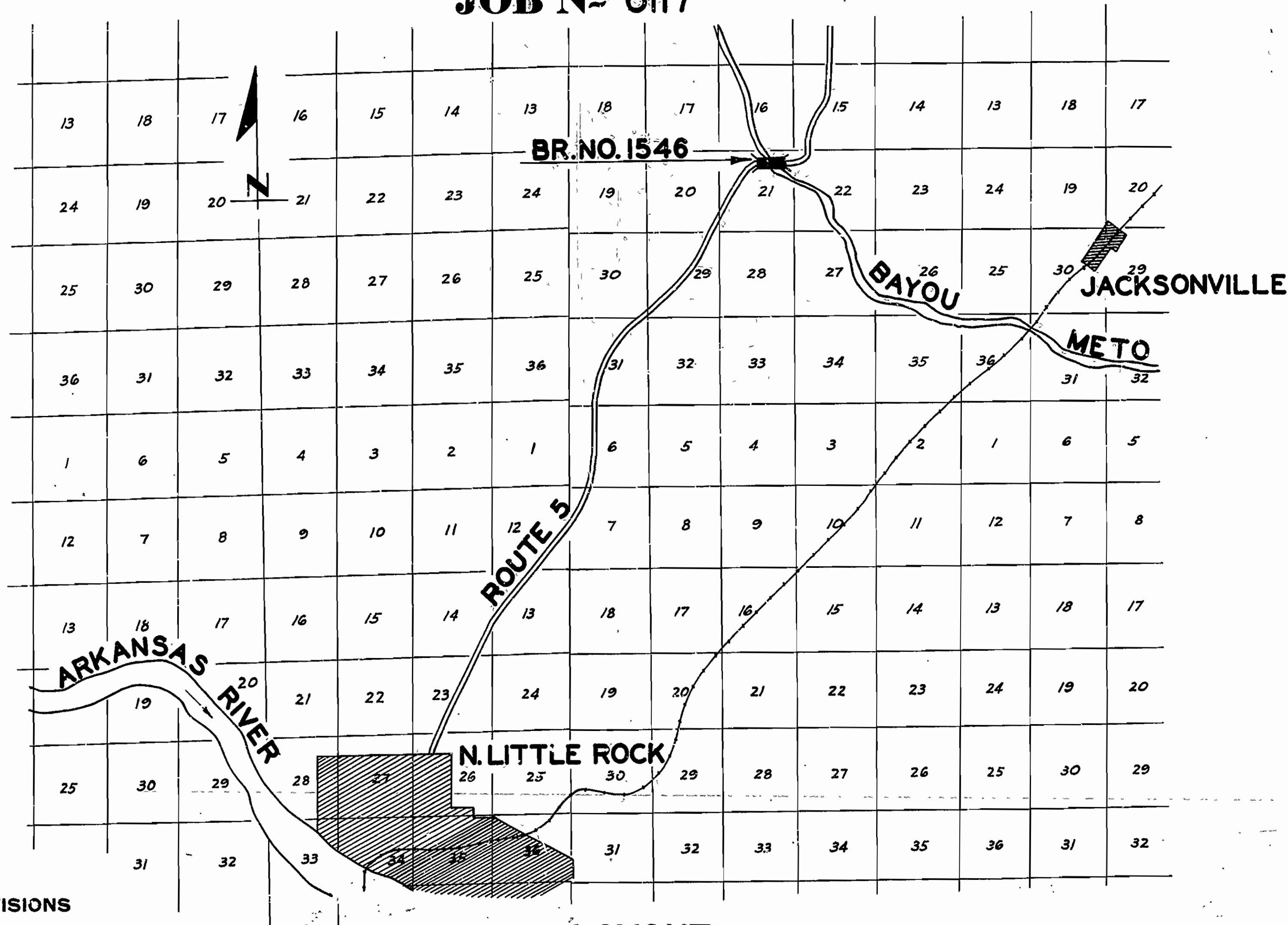
- Sheet No. 1 Drwg No. 2701 Title Sheet.
- " " 2 " " 2702 Layout of Br. No. 1546
- " " 3 " " 2277 Details of 40' R.C.D. Girder Span.
- " " 4 " " 1093 Details of 80' Low Truss Span.
- " " 5 " " 2703 Details of Piers 1, 2 & 3
- " " 6 " " 2704 Details of End Abutments.

PLAN OF PROPOSED BRIDGE
OVER
BAYOU METO
PULASKI COUNTY

QUANTITIES

Item No. 13 Dry Excavation for Structures	224	Cu. Yds.
" 13 Wet	407	" "
" 13 Rock	105	" "
" 54 Class 'A' Concrete	206.83	" "
" 54 " " "	188.44	" "
" 55 Reinforcing Steel	68,700	Lbs
" 56 Structural Steel	62,520	" "
" 69 Rip Rap	83	Cu. Yds.
" 74 Concrete Railing for Structures	245	Lin. Ft.

ROUTE 5 SEC. 1
JOB No 6117



LAYOUT

Scale: 1" = 1/4 Mile

LENGTH OF PROJECT = 202'-2" = 0.472 Mi.
LENGTH OF BRIDGES = 202'-2"
LENGTH OF EMBANKMENT = 0'

The Specifications adopted by the State Highway Commission, May 30th, 1925 apply with subsequent revisions and Special Provisions noted apply to this Project.

- Pamphlet A Revised Sept. 1st, 1926
- " B
 - " C
 - " D Revised July 1st, 1928
 - " E
 - " F
 - " G
 - " H Revised Oct. 1st, 1928
 - " I Revised Jan. 1st, 1929
 - " J Revised Jan. 1st, 1929
 - " K
 - " L Revised Jan. 1st, 1929

SPECIAL PROVISIONS

Item	No. of Sheets
Rip Rap	1
Pamphlet A	51

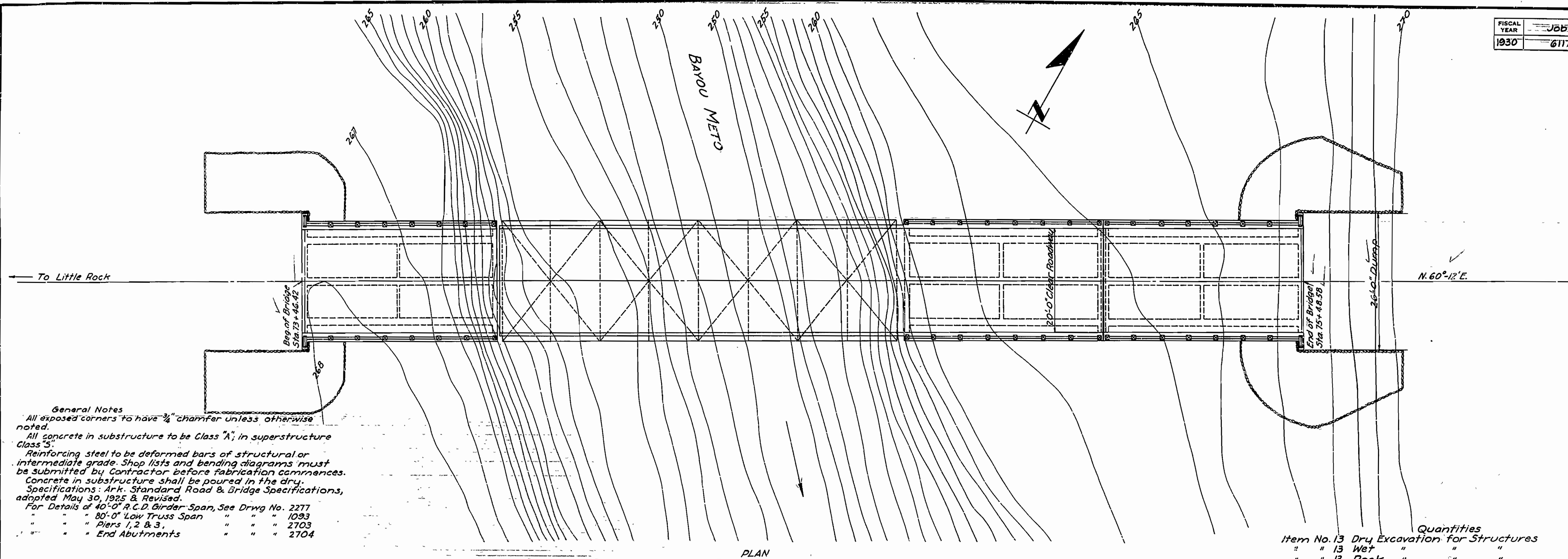
APPROVED
CHAIRMAN - STATE HIGHWAY COMMISSION

APPROVED
STATE HIGHWAY ENGINEER

M.B. Lawrence
BRIDGE ENGINEER

BRIDGES No. 1546

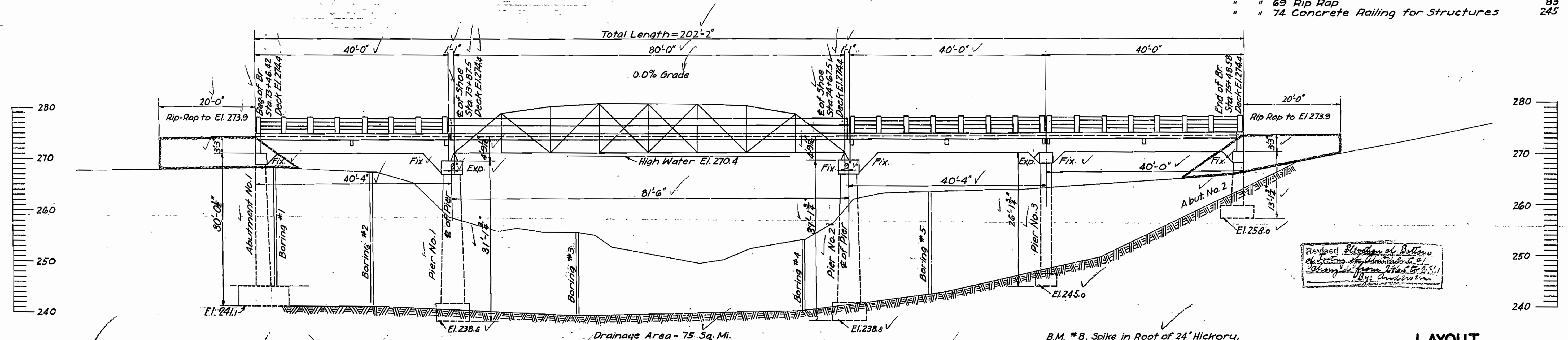
DRAWING NO. 2701



General Notes
 All exposed corners to have $\frac{3}{8}$ " chamfer unless otherwise noted.
 All concrete in substructure to be Class "A", in superstructure Class "S".
 Reinforcing steel to be deformed bars of structural or intermediate grade. Shop lists and bending diagrams must be submitted by Contractor before fabrication commences.
 Concrete in substructure shall be poured in the dry.
 Specifications: Ark. Standard Road & Bridge Specifications, adopted May 30, 1925 & Revised.
 For Details of 40'-0" R.C.D. Girder Span, See Drwg No. 2277
 " " " 80'-0" Low Truss Span " " " 1093
 " " " Piers 1, 2 & 3, " " " 2703
 " " " End Abutments " " " 2704

Quantities

Item No.	Description	Quantity	Unit
13	Dry Excavation for Structures	224	Cu. Yds.
"	" 13 Wet " " "	407	" "
"	" 13 Rock " " "	105	" "
"	" 54 Class "A" Concrete	206.83	" "
"	" 54 " " " "	188.44	" "
"	" 55 Reinforcing Steel	60,700	Lbs.
"	" 56 Structural Steel	62,520	" "
"	" 69 Rip Rap	83	Cu. Yds.
"	" 74 Concrete Railing for Structures	245	Lin. Ft.



B.M. #7, Nail in Root of 15" Water Oak, 170' Lt. of Sta. 72+50, El. 269.08

Boring #1
 at Sta. 73+50
 Surf. El. 267.9
 Clay Loam to El. 266.4
 Yellow Clay " " 257.9
 Dry Sandy Clay to El. 256.4
 Wet " " " 249.4
 Rock at El. 249.4

Boring #2
 at Sta. 73+70
 Surf. El. 266.9
 Clay Loam to El. 264.9
 Yellow Clay " " 255.9
 Dry Sandy Clay " " 254.9
 Wet " " " 251.4
 White " " " 250.4
 Yellow Clay & Sand " " 240.9
 Rock at El. 240.9

Boring #3
 at Sta. 74+12.5
 Surf. El. 255.9
 Gray Clay to El. 251.9
 Wet Blue Clay to El. 248.4
 Soft Wood & Blue Clay to El. 245.4
 Soft Blue Clay to El. 238.8
 Rock at El. 238.8

Boring #4
 at Sta. 74+59
 Surf. El. 253.8
 Brown Clay to El. 251.8
 Blue Clay " " 246.3
 Decayed Wood " " 245.8
 Blue Clay " " 239.8
 Rock at El. 239.8

Boring #5
 at Sta. 74+85
 Surf. El. 263.0
 Clay Loam to " 261.5
 Yellow Clay " " 3.0
 White Clay " " 251.0
 Yellow Clay " " 248.0
 Blue Clay " " 243.0
 Rock at " 243.0

B.M. #8, Spike in Root of 24" Hickory, 58' Lt. of Sta. 77+30, El. 272.92

Revised Elevation of Bottom of Boring #1, #2, #3, #4, #5
 as determined by
 Mr. J. H. ...

LAYOUT
BRIDGE OVER BAYOU METO CREEK
PULASKI COUNTY
 ROUTE 5 SEC. 1

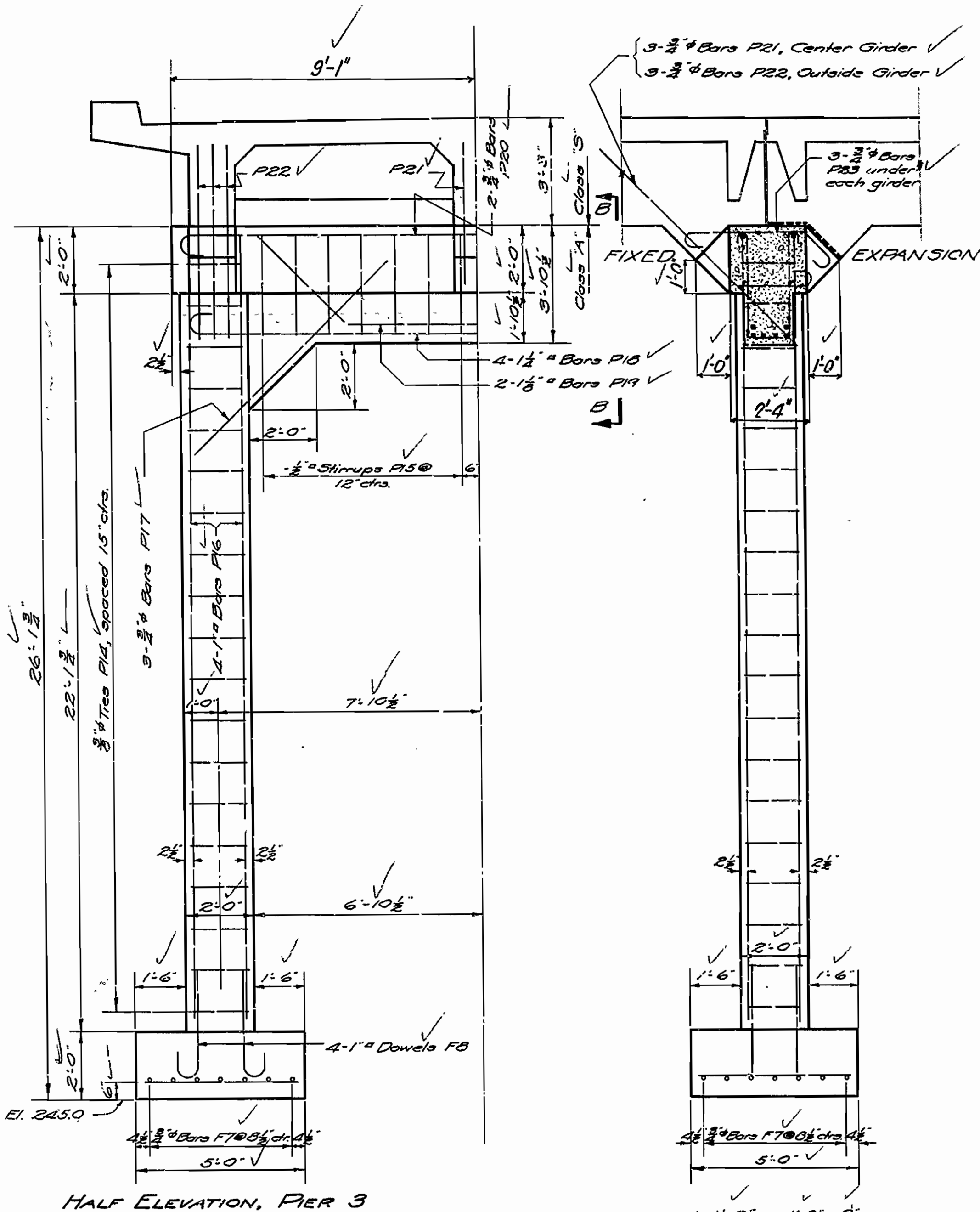
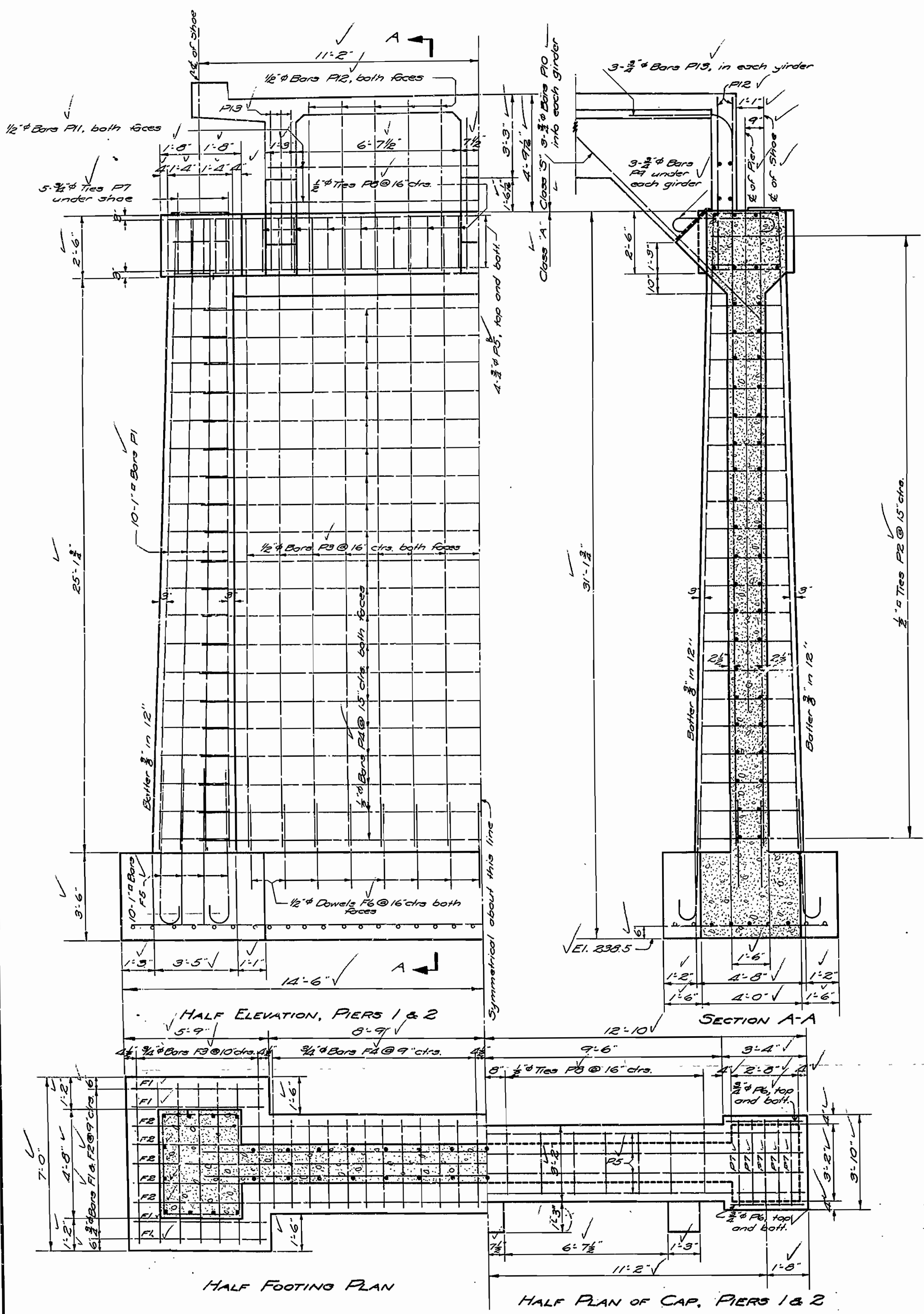
ARKANSAS STATE HIGHWAY COMMISSION
 LITTLE ROCK, ARK.

Drawn By: A. Date: 5-23-30
 Traced By: G. Date: 5-24-30
 Checked By: L. H. Date: _____
 BRIDGE NO. 1546 DRAWING NO. 2702

N. B. ...
 BRIDGE ENGINEER

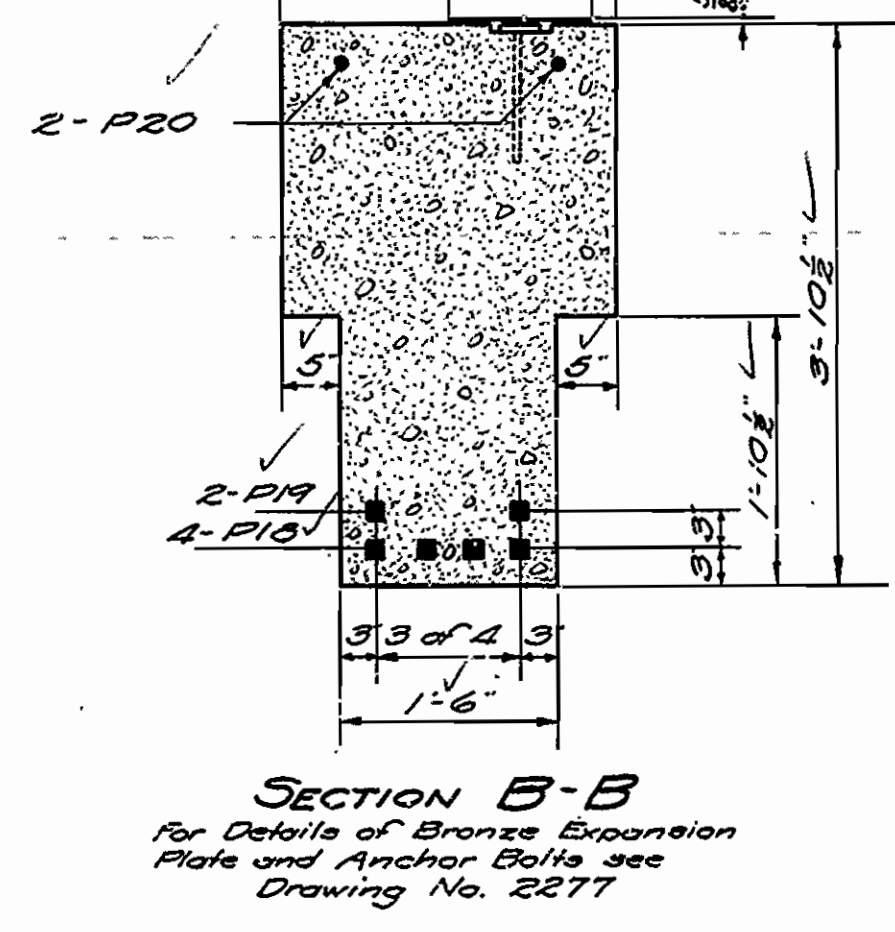
ELEVATION

FISCAL YEAR	Job No.	SHEET No.	TOTAL SHEETS
1930	6117	5	6



MARK	SIZE	LENGTH	BENDING DIAGRAM	
F5	1" ✓	7'-3" ✓		
F8	1" ✓	5'-9" ✓		
P2	2" ✓	Average 13'-5" ✓	A	B
P7	2" ✓	12'-0" ✓	3'-6" ✓	2'-1" ✓
P8	2" ✓	10'-6" ✓	2'-9" ✓	2'-1" ✓
P14	3" ✓	7'-8" ✓	1'-8 1/2" ✓	1'-8 1/2" ✓
P15	2" ✓	9'-5" ✓		
P9	2" ✓	6'-1" ✓		
P13	2" ✓	10'-7" ✓		
P18	1 1/2" ✓	19'-6" ✓		

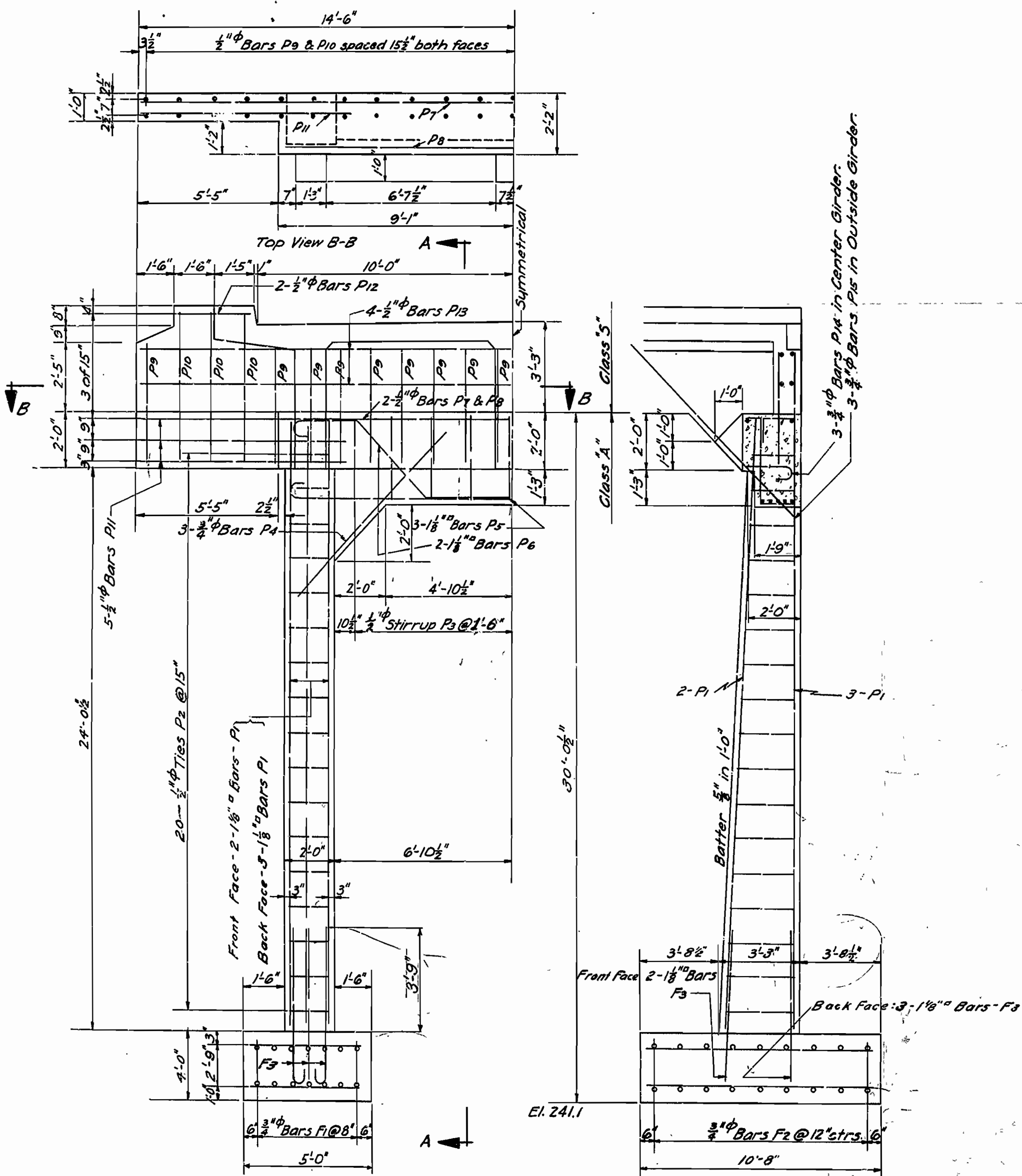
MARK	SIZE	LENGTH	BENDING DIAGRAM
P19	1 3/8" ✓	22'-7" ✓	
P23	2" ✓	6'-1" ✓	
P21	2" ✓	8'-0" ✓	



PIERS 1, 2, & 3
 BRIDGE OVER BAYOU METO CREEK
 FULASKI COUNTY
 ROUTE 5 SEC. 1
ARKANSAS STATE HIGHWAY COMMISSION
 LITTLE ROCK, ARK.
 Drawn By: *A* Date: 3/27/30
 Traced By: *Garver* Date: 3/28/30
 Checked By: *W.H.P.* Date: _____
 BRIDGE NO. 1546 DRAWING NO. 2703
 Scale: 3/8" = 1' ft.

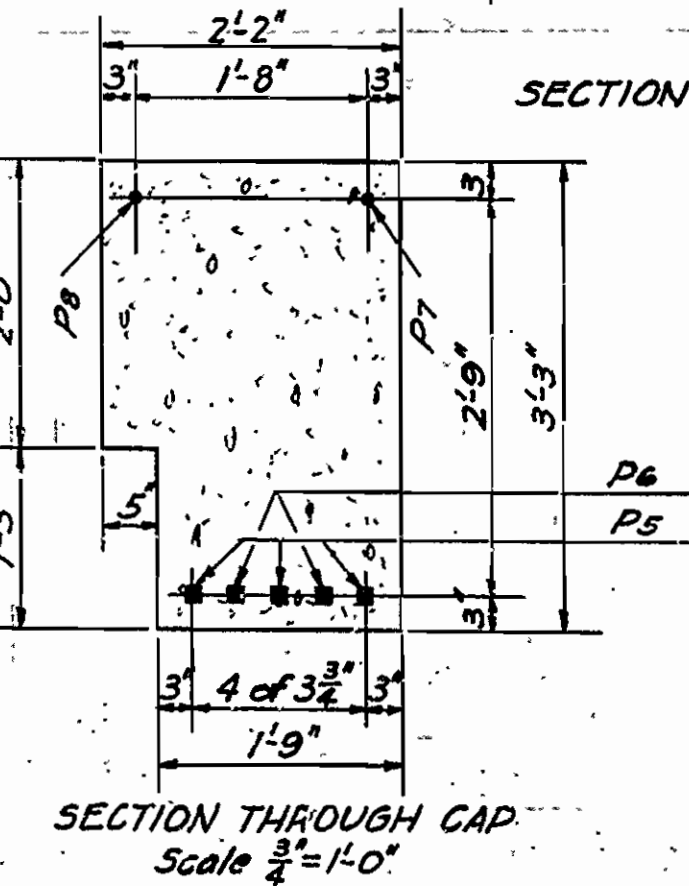
N.B. Garver
 BRIDGE ENGINEER

FISCAL YEAR:	Job No.:	SHEET No.:	TOTAL SHEETS:
1930:	6117.	6	6

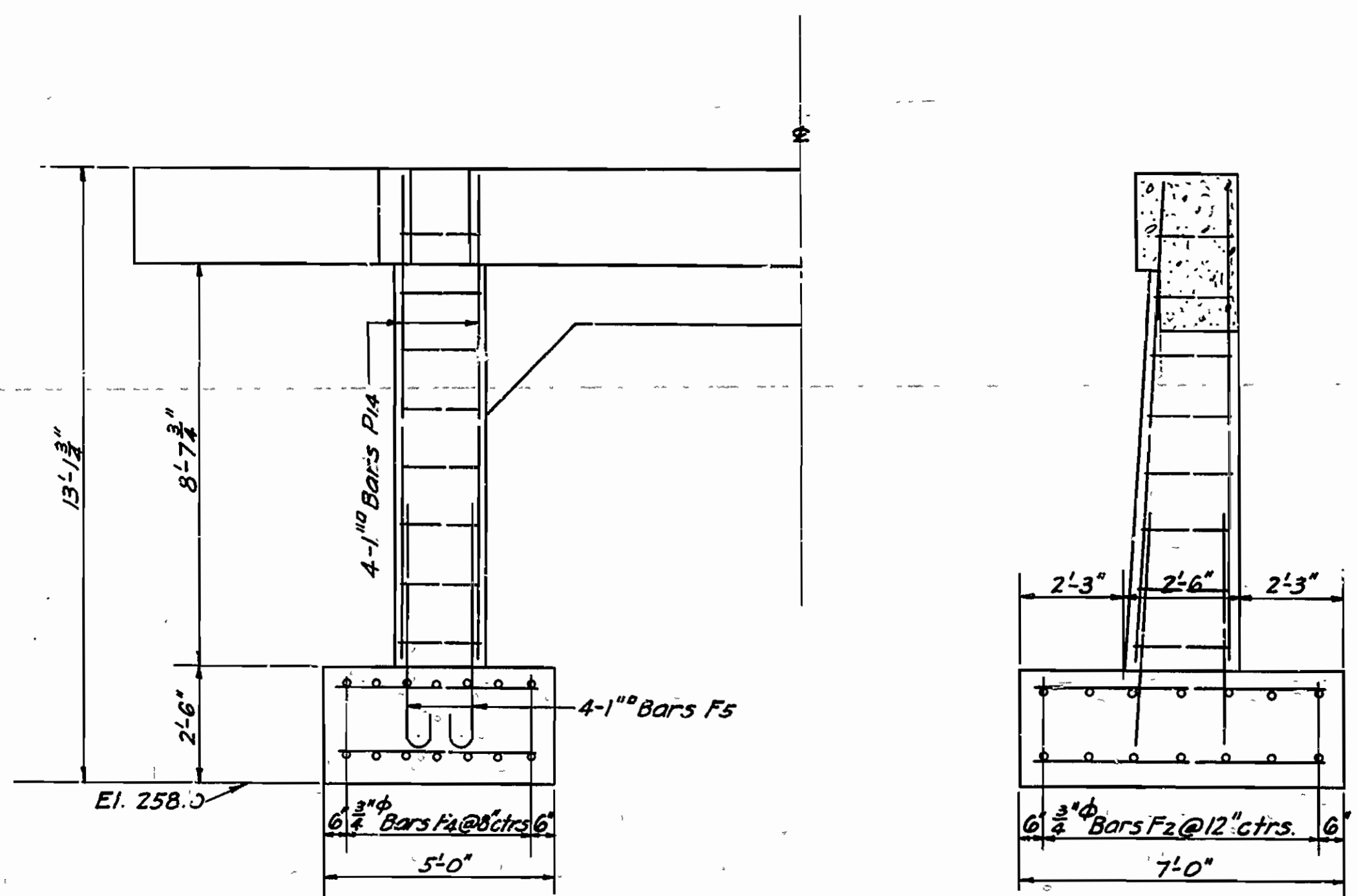


HALF ELEVATION, ABUTMENT 1

SECTION A-A, ABUTMENT 1



SECTION THROUGH CAP
Scale 3/4" = 1'-0"



HALF ELEVATION OF AND SECTION THROUGH ABUTMENT 2
Dimensions not given and Reinforcing Bars not shown are same as Abutment 1

Mark	Size	Length	BENDING DIAGRAM
F3	1 1/8"	6'-9"	
F5	1"	6'-4"	
P6	1 1/8"	2'-8"	
P5	1 1/8"	19'-4"	
P3	3/8"	9'-6"	
P2	1 1/2"	Average 8'-8"	
P14	3/4"	9'-0"	

Revised Aug. 2, 1930
By: [Signature]
Checked by: [Signature]

DETAILS OF ABUTMENT 1 & 2
BRIDGE OVER BAYOU METO
PULASKI COUNTY
ROUTE 5 SEC. 1

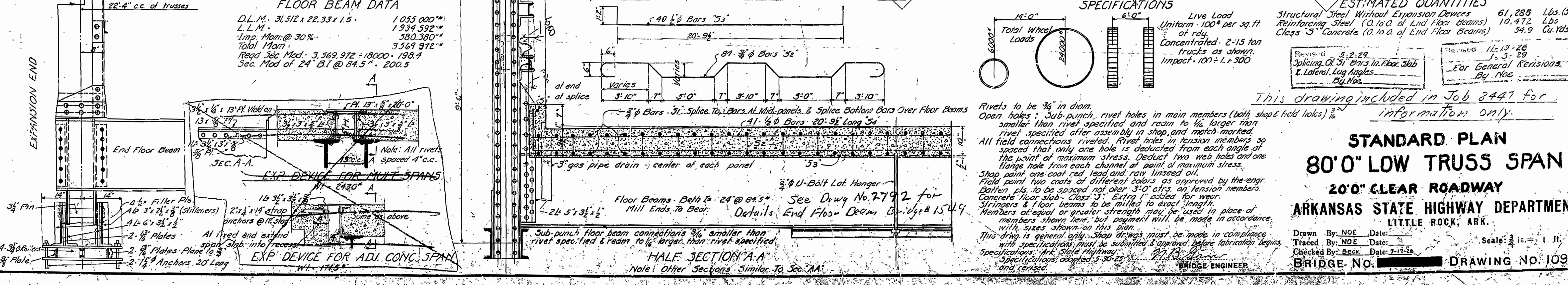
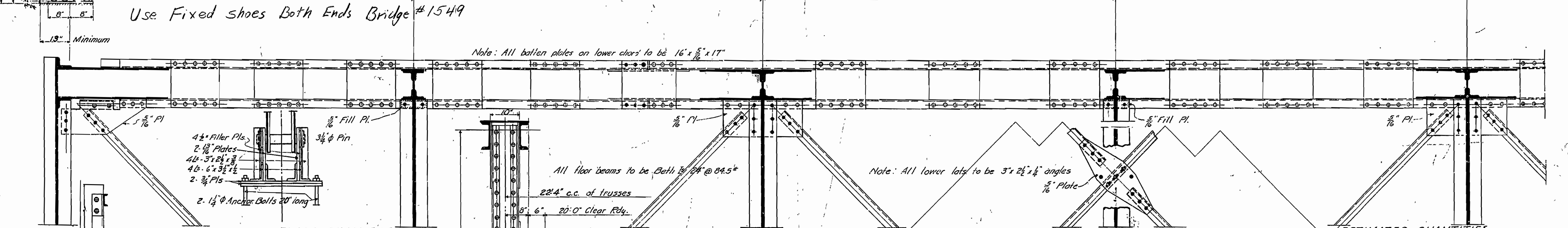
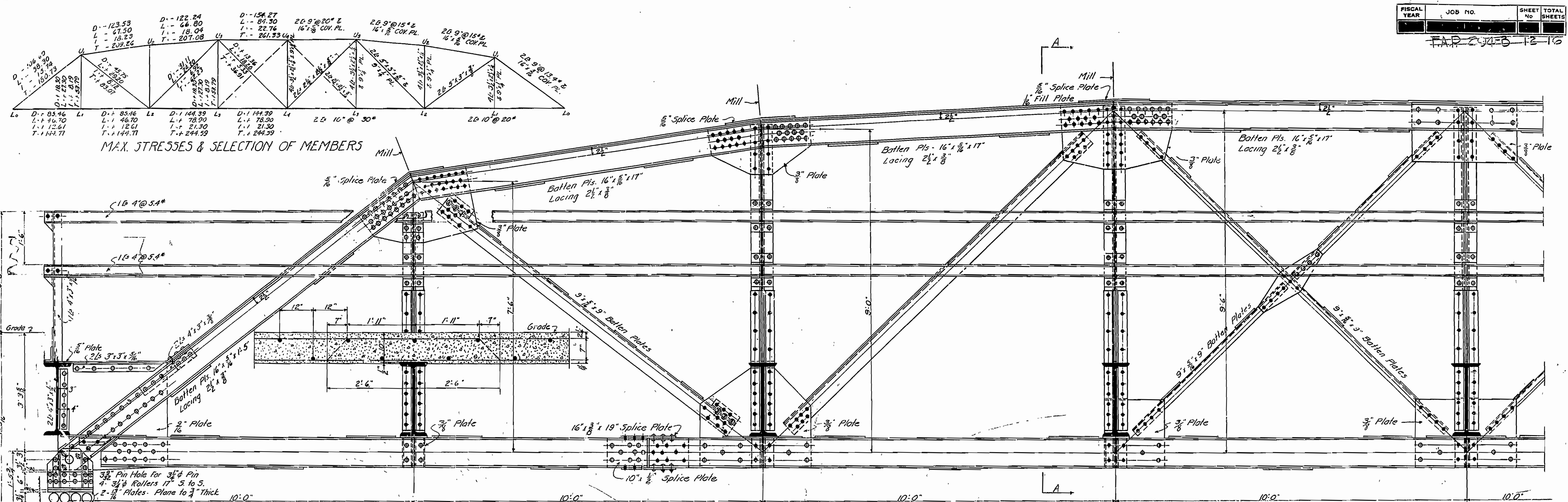
ARKANSAS STATE HIGHWAY COMMISSION
LITTLE ROCK, ARK.

Drawn By: A. Date: 6-3-30
Traced By: [Signature] Date: 6-3-30
Checked By: [Signature] Date: [Signature]
Scale: 3/8" = 1'
BRIDGE NO. 1546 DRAWING NO. 2704

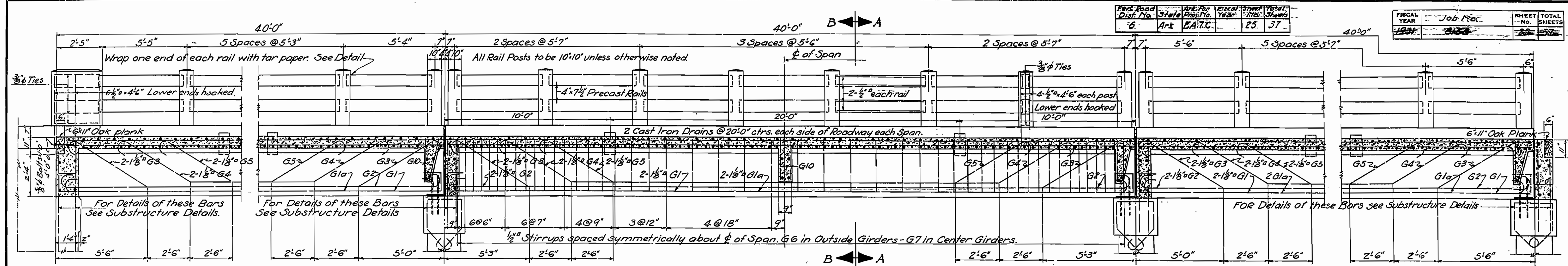
M.B. [Signature]
BRIDGE ENGINEER

FISCAL YEAR	JOB NO.	SHEET NO.	TOTAL SHEETS

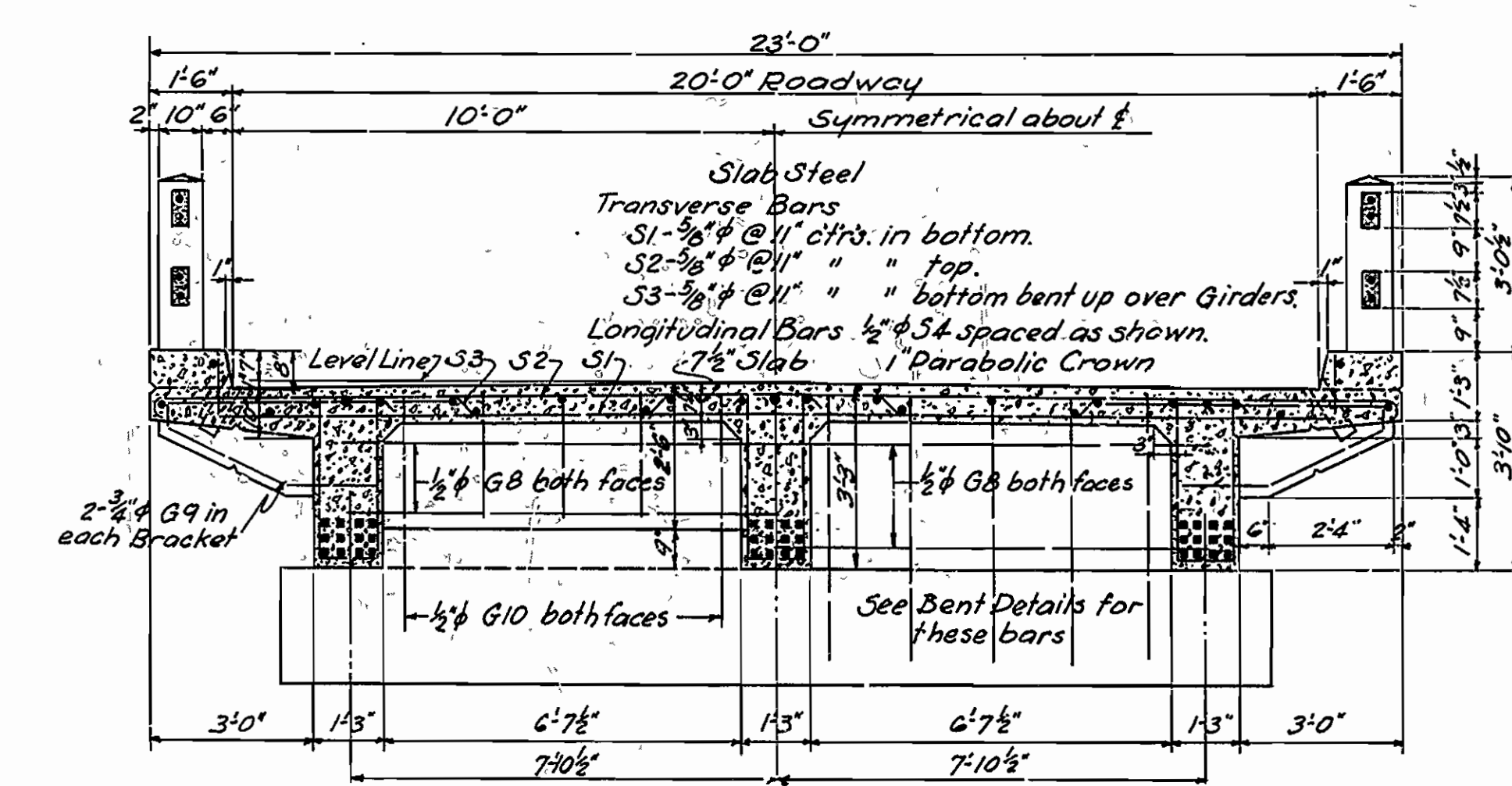
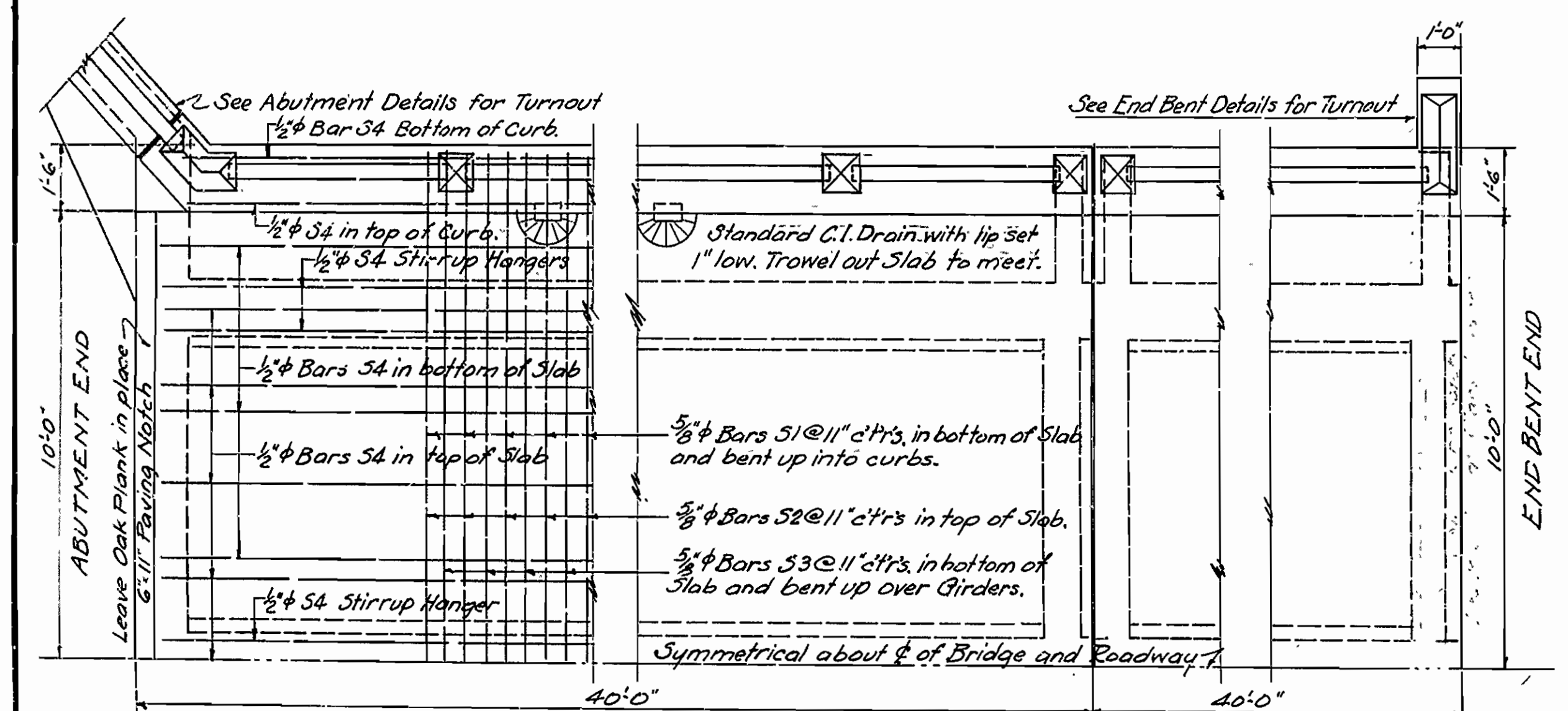
F.A.P. 204-B-12-10



Dist. No.	State	Art. No.	Fiscal Year	Sheet No.	Total Sheets
6	Ark.	EA.T.C.	25	37	

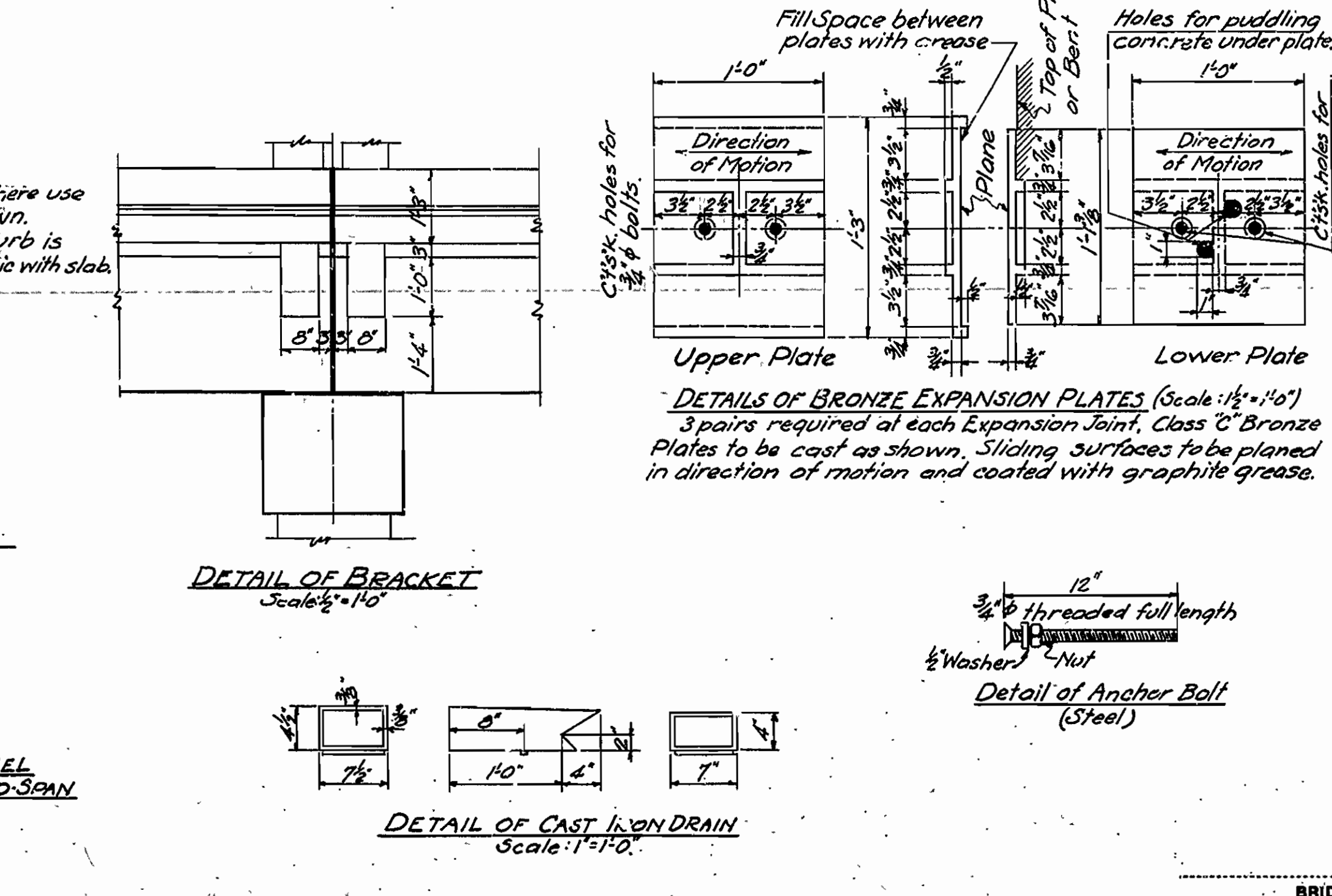
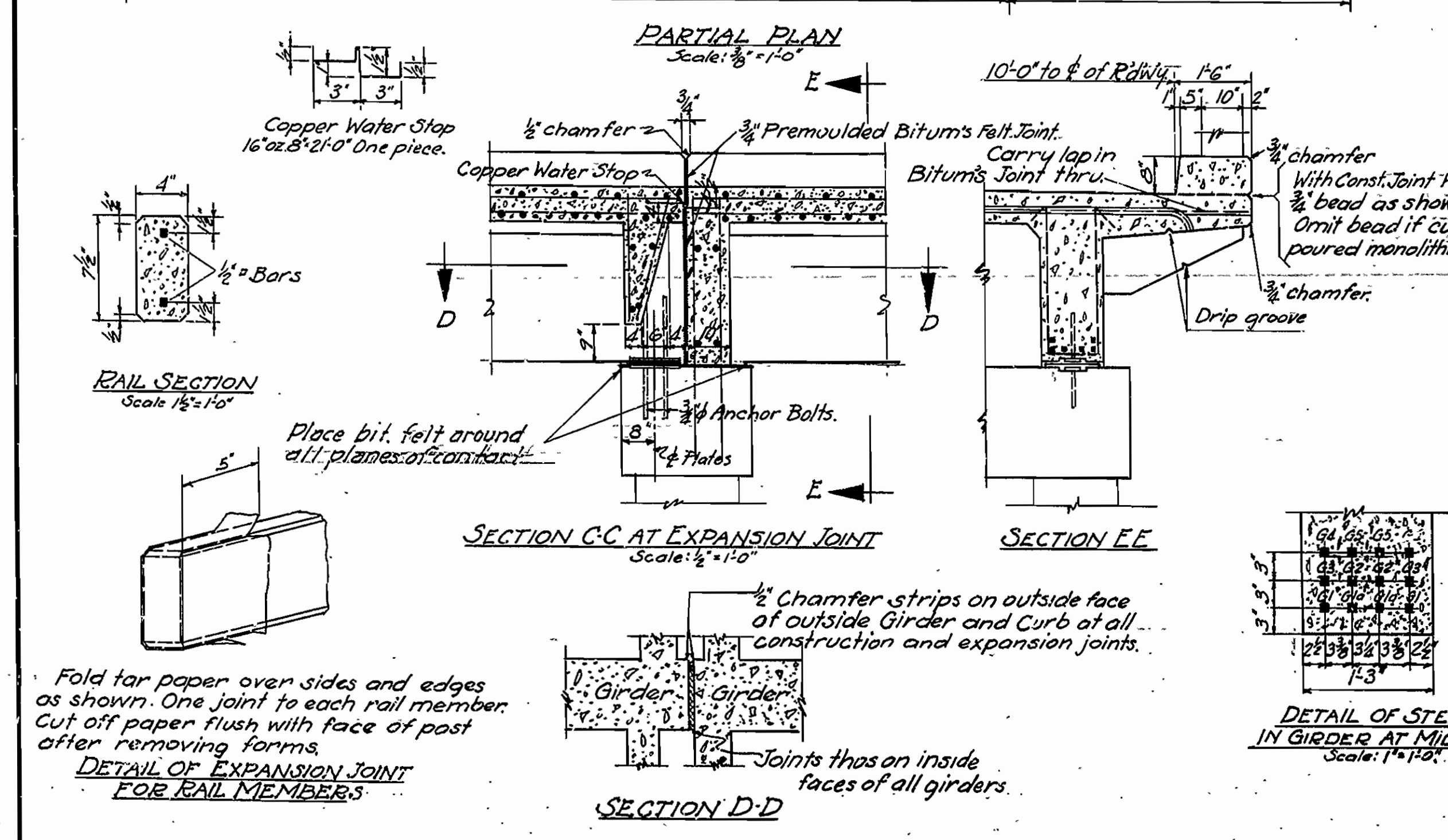


ABUTMENT END SPAN PIER OR BENT EXPANSION-FIXED INTERMEDIATE SPAN LONGITUDINAL SECTION ALONG 1/4 OF ROADWAY Scale: 1/8" = 1'-0" PIER OR BENT EXPANSION-FIXED END SPAN END BENT



HALF SECTION A-A HALF SECTION B-B Scale: 1/8" = 1'-0"

MARK	SIZE	LENGTH	BENDING DIAGRAM				
			A	B	C	D	
SLAB	S1	5/8" φ	22'-6"				
	S2	5/8" φ	23'-6"				
	S3	5/8" φ	24'-0"				
GIRDER	G1	1 1/8" φ	43'-8"				
	G1a	1 1/8" φ	41'-2"				
	G2	1 1/8" φ	40'-8"				
	G3	1 1/8" φ	42'-0"	29'-6"	4'-9"	5'-3"	2'-6"
	G4	1 1/8" φ	36'-0"	24'-6"	4'-4"	4'-9"	2'-3"
	G5	1 1/8" φ	31'-0"	19'-6"	4'-4"	4'-9"	2'-3"
	G3*	1 1/8" φ	41'-6"	29'-0"	4'-9"	5'-3"	2'-6"
	G4*	1 1/8" φ	35'-6"	24'-0"	4'-4"	4'-9"	2'-3"
	G5*	1 1/8" φ	30'-6"	19'-0"	4'-4"	4'-9"	2'-3"
			A				
G6	1/2" φ	7'-2"	2'-9"				
G7	1/2" φ	7'-4"	2'-10"				
G9	3/8" φ	9'-9"					



GENERAL NOTES
 All exposed corners to have 3/8" chamfer unless otherwise noted.
 Precast concrete handrails to be 1:1:2 Mix. Maximum aggregate 3/4".
 All concrete above top of Bent Caps, except Handrail, to be Class 3.
 Reinforcing steel to be deformed bars of structural or intermediate grade.
 Shop lists and bending diagrams must be submitted by Contractor before fabrication is begun.
 Roadway drains and expansion devices to be paid for at unit price bid for reinforcing steel.
 Specifications: Arkansas Standard Road & Bridge Specifications adopted May 30, 1925 & Revised. See file sheet.
 Unit Stresses: f_c = 16,000 lb./sq. in.; f_s = 75,000 lb./sq. in.; n = 15. Live Loading H15.
 All dimensions on bars are from center to center of bars.

DETAILS OF STANDARD 40'-0" R.C.D. GIRDER SPAN 3 GIRDER TYPE - 20'-0" CLEAR RDWY.
 ROUTE SEC.
ARKANSAS STATE HIGHWAY COMMISSION
 LITTLE ROCK, ARK.
 Drawn By: _____ Date: _____
 Traced By: _____ Date: _____
 Checked By: _____ Date: _____
 BRIDGE NO. _____ DRAWING NO. 2277
 Scale: 1/8" = 1'-0" and as noted