

FED. DIST. NO.	STATE	PROJ. NO.	FISCAL YEAR	SHEET NO.	TOTAL SHEETS
6	ARK.	123	1930	1	7

STATE OF ARKANSAS
STATE HIGHWAY COMMISSION

INDEX OF SHEETS

Sheet No.	Drwg No.	Title
1	3047	Title sheet
2	3048	Layout Br. No. 1597
3	3049	Details Substructure Br. 1597
4	2203	Details of 40'0" C.C.D. Girder 12' Rdwy.
5	2401	Details of 140'0" Truss 12' Rdwy.
6	2402	Details of 140'0" Truss 12' Rdwy.
7	3050	Plan + profile sheet

PLAN OF PROPOSED BRIDGE
OVER
BIG PINEY CREEK
MT-LEVI - SAND GAP ROAD
JOHNSON COUNTY

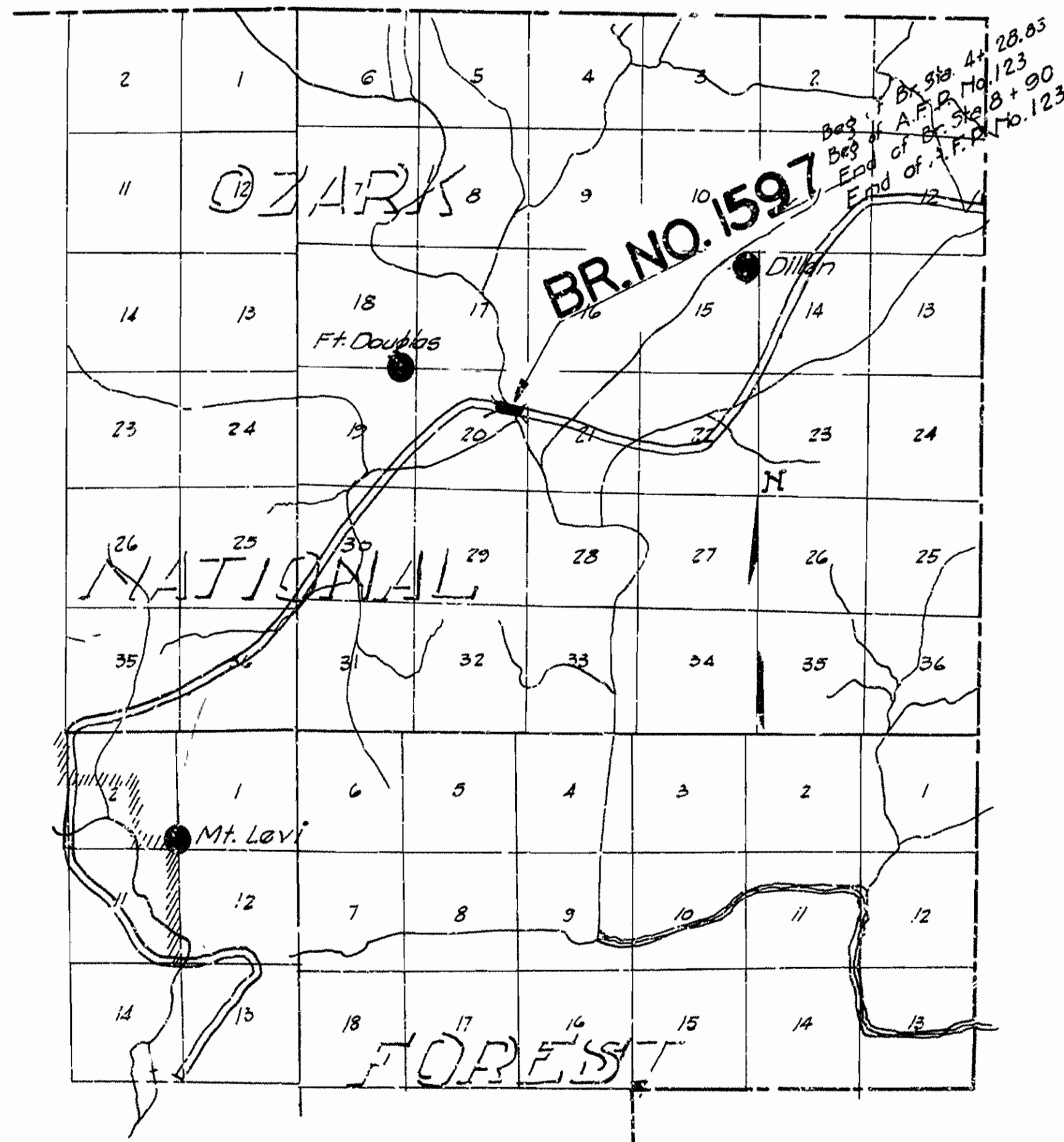
QUANTITIES

Item No.	Quantity	Unit
S.P. 912	500	Cu. Yds
S.P. 912	100	" "
13	275	" "
13	340	" "
13	100	" "
54	270.28	" "
54	244.44	" "
55	94905	Lbs
56	82000	" "
S.P. 69	340	Cu. Yds
74	653	Lin. Ft.

ROUTE 123 SEC. 3

JOB NO 8160

EMERGENCY ARKANSAS FOREST PROJECT NO. 123-B



Specifications approved by Chief, Bureau of Public Roads, September 28, 1926, and adopted by State Highway Commission May 30, 1926 with revisions and Special Provisions as follows:

REVISIONS

Pamphlet	Revised	Date	Approved
A	Revised	Sept. 1st, 1928	Approved June 1st, 1929
B	Revised	Nov. 1st, 1929	
C			
D	Revised	July 1st, 1928	Approved Nov. 24th, 1928
E	Revised	Jan. 1st, 1930	
F	Revised	Aug. 1st, 1929	
G	Revised	June 1st, 1929	
H	Revised	Jan. 1st, 1930	
I			
J	Revised	Jan. 1st, 1929	Approved June 1st, 1929
K			
L	Revised	Jan. 1st, 1926	Approved June 1st, 1929

SPECIAL PROVISIONS

Item	No. of Sheets
Earth Excavation	3 sheets
Rip Rap	1 sheet
Engineers office	1 sheet
Aluminum paint	1 sheet
Section 82	1 sheet
Structural steel	1 sheet

LAYOUT

Scale: 1" = 1 Mile

LENGTH OF PROJECT	= 4.61'-2" = 0.087 Mi
LENGTH OF BRIDGES	= 4.61'-2"
LENGTH OF EMBANKMENT	= 0.0
LENGTH OF JOB	=

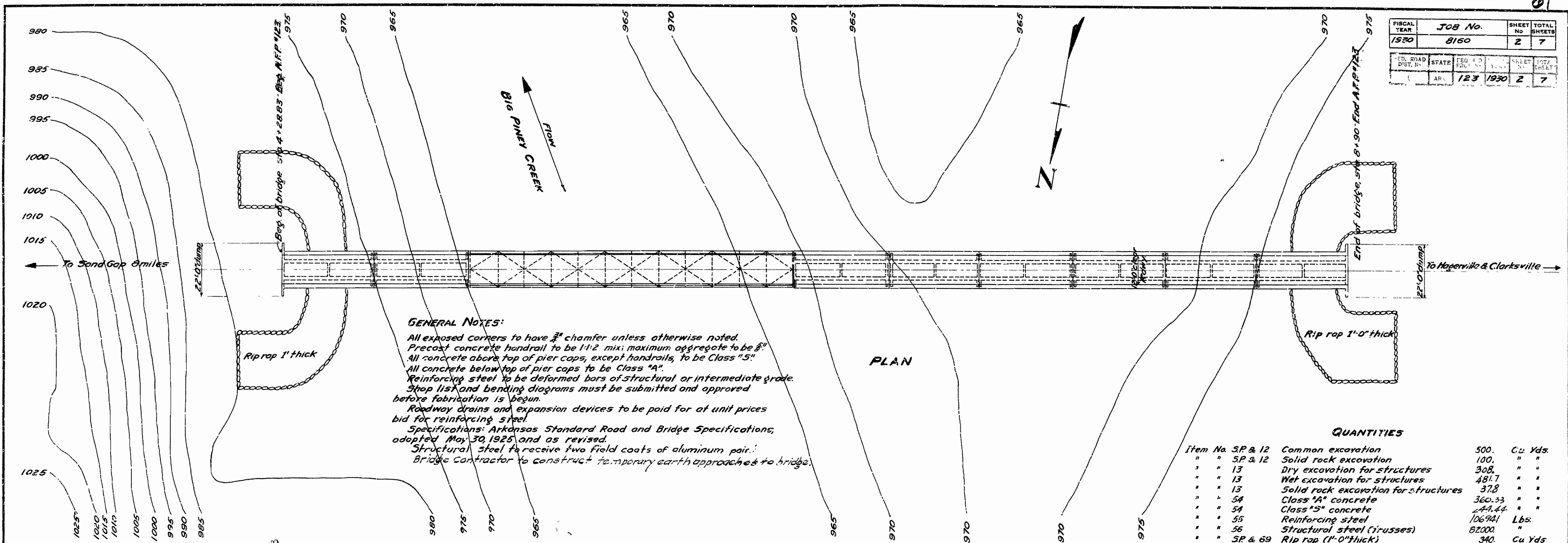
APPROVED
CHIEF ENGINEER - U. S. BUREAU OF PUBLIC ROADS
APPROVED
DISTRICT ENGINEER - U. S. BUREAU OF PUBLIC ROADS
APPROVED
CHIEF - U. S. BUREAU OF PUBLIC ROADS
APPROVED
CHAIRMAN - STATE HIGHWAY COMMISSION
APPROVED
STATE HIGHWAY ENGINEER

N.B. Sawyer
BRIDGE ENGINEER

BRIDGES NO. 1597

DRAWING NO. 3047

FISCAL YEAR	JOB No.	SHEET NO.	TOTAL SHEETS
1930	8160	2	7
ED. ROAD DIST. No.	STATE	FED. A. D. PROJ. No.	SHEET No.
	AR.	123	2
		1930	7

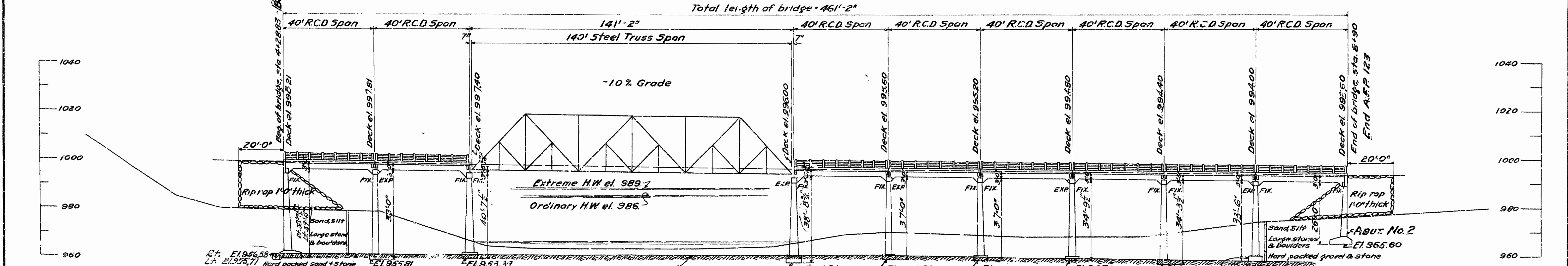


GENERAL NOTES:

All exposed corners to have $\frac{3}{8}$ " chamfer unless otherwise noted.
 Precast concrete handrail to be 1:1:2 mix; maximum aggregate to be $\frac{3}{8}$ ".
 All concrete above top of pier caps, except handrails, to be Class "S".
 All concrete below top of pier caps to be Class "A".
 Reinforcing steel to be deformed bars of structural or intermediate grade.
 Shop list and bending diagrams must be submitted and approved before fabrication is begun.
 Roadway drains and expansion devices to be paid for at unit prices bid for reinforcing steel.
 Specifications: Arkansas Standard Road and Bridge Specifications, adopted May 30, 1925, and as revised.
 Structural steel to receive two field coats of aluminum paint.
 Bridge Contractor to construct temporary earth approaches to bridge.

QUANTITIES

Item No.	SP & 12	Description	Quantity	Unit
"	"	Common excavation	500.	Cu. Yds.
"	"	Solid rock excavation	100.	"
"	"	Dry excavation for structures	308.	"
"	"	Wet excavation for structures	481.7	"
"	"	Solid rock excavation for structures	37.8	"
"	"	Class "A" concrete	360.33	"
"	"	Class "S" concrete	44.44	"
"	"	Reinforcing steel	106.941	Lbs.
"	"	Structural steel (trusses)	82000	"
"	"	Rip rap (1'-0" thick)	340.	Cu. Yds.
"	"	Concrete railing for structures	653.	Lin. Ft.
"	"	Wet Exc. Str. + 15% " " " + 25%	103.2	Cu. Yds.
"	"	" " " + 15%	18.1	"
"	"	" " " + 25%	21.4	"
"	"	" " " + 50%	2.8	"



B.M. El. 970.49 on 18" sycamore, 65' right of sta. 1+80
 Drainage area = 180 sq. miles. c=1.0
 For details of superstructure, see Drwg. Nos. 2203, 2401 & 2402.
 For details of substructure, see Drawing No. 3049.

Bent No. 6
 4-11-31 E.M.M.
 7-29-31 = Field Engineer

LAYOUT
 BRIDGE OVER BIG PINEY CREEK
 ON HAGERVILLE-SAND GAP ROAD
 JOHNSON CO.
 ROUTE 123 SEC. 3

ARKANSAS STATE HIGHWAY COMMISSION
 LITTLE ROCK, ARK.

Scale: 1 in. = 20 ft.

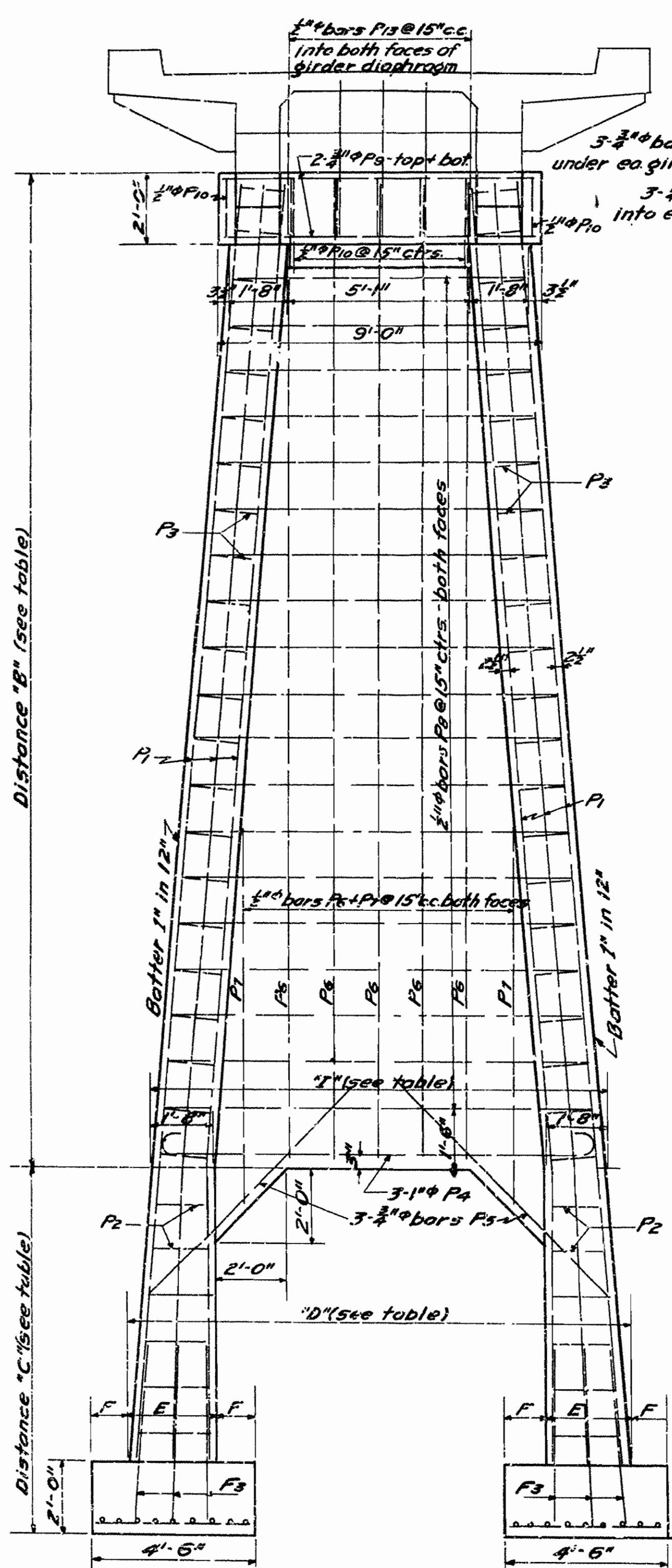
Drawn By: *W.B. Glavin* Date: 2-5-31
 Traced By: *H.M.H.* Date: 2-10-31
 Checked By: _____ Date: _____

BRIDGE No. 1597 DRAWING No. 3048

For Detail of 40' R.C.D. Girder see drawing no. 2203
 " " " 120' Truss Span " " " 2402

See drawing No. 2402 for arch details

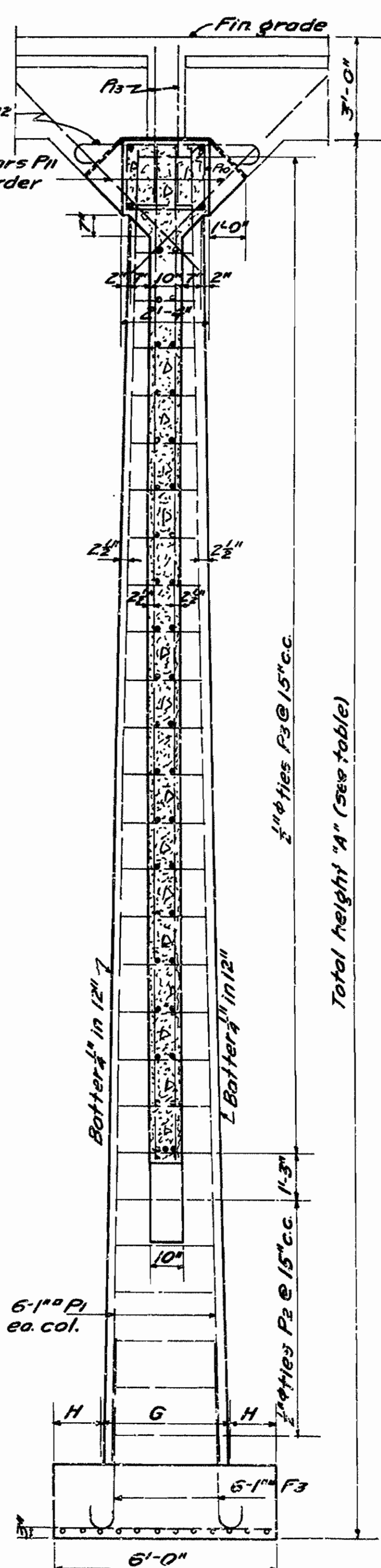
FISCAL YEAR	Job No	SHEET NO	TOTAL SHEETS
1930	8160	3	7
DATE	REV. A	REV. B	REV. C
123	1930	3	7



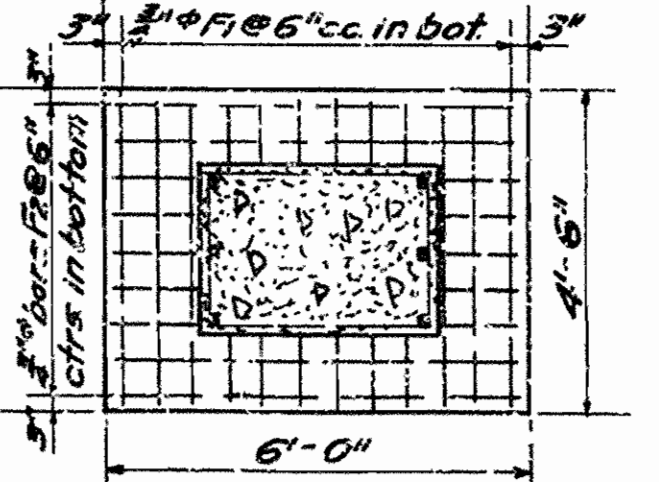
ELEVATION OF BENTS

Bent No	A	B	C	D	E	F	G	H	I
1	37'-0"	27'-0"	10'-0"	13'-11"	21'-4"	11'-11"	31'-4"	11'-3"	121'-7"
2,3&4	34'-0"	6'-0"	8'-0"	13'-5"	21'-2"	11'-2"	31'-3"	11'-4"	121'-5"
5	34'-0"	25'-0"	9'-0"	13'-5"	21'-3"	11'-12"	31'-3"	11'-4"	121'-3"
6	32'-0"	20'-0"	12'-0"	21'-0"	21'-0"	11'-0"	31'-2"	11'-5"	121'-5"

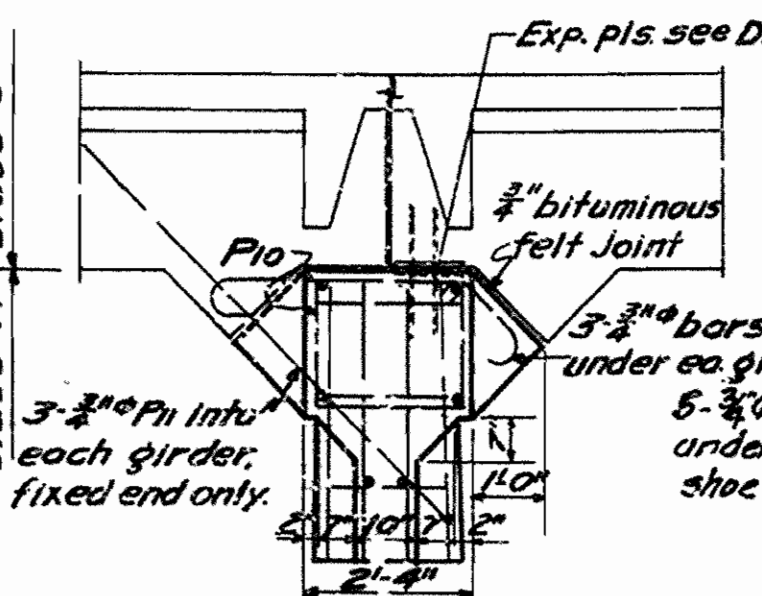
32'-0" 12'-0" 21'-0" 31'-2"



SECTION ON E OF BENTS Showing Fixed Ends, Bents 3-5



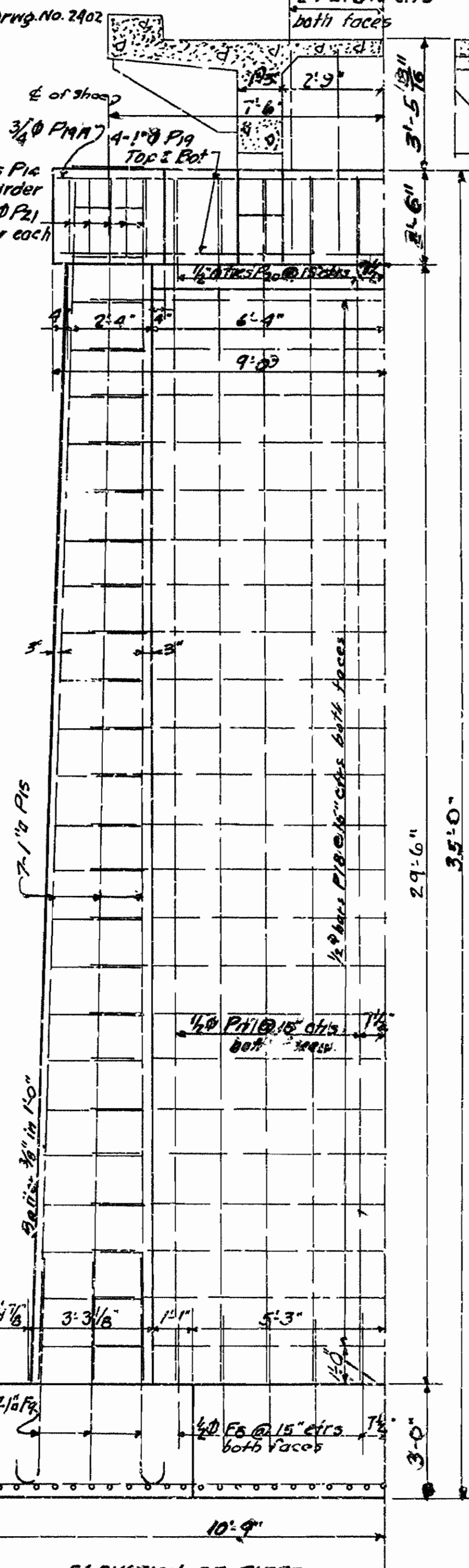
FOOTINGS PLAN - BENTS



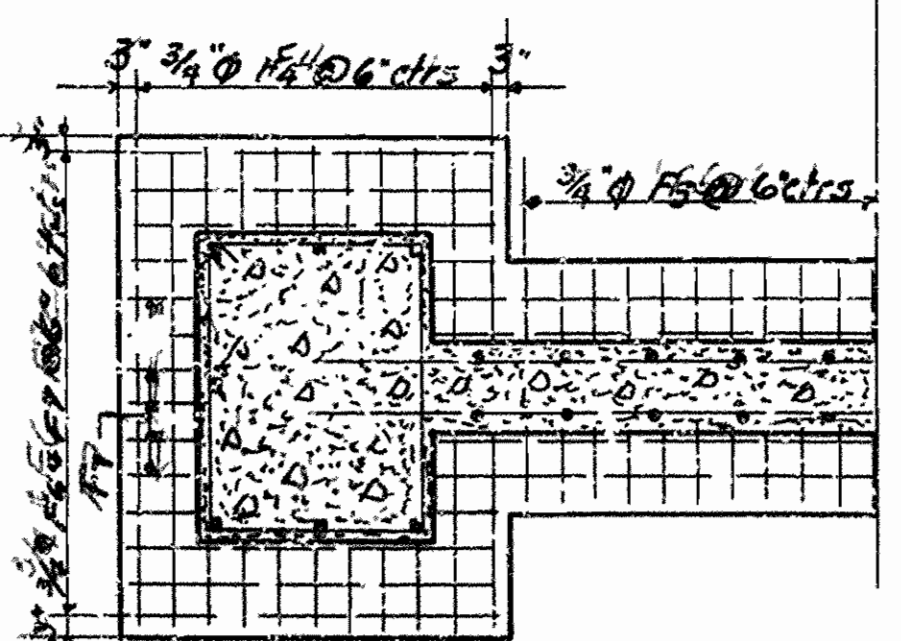
PART SECTION ON E OF BENTS Showing Exp. End, Bents 1, 2, 4 & 6

Banding Diagrams

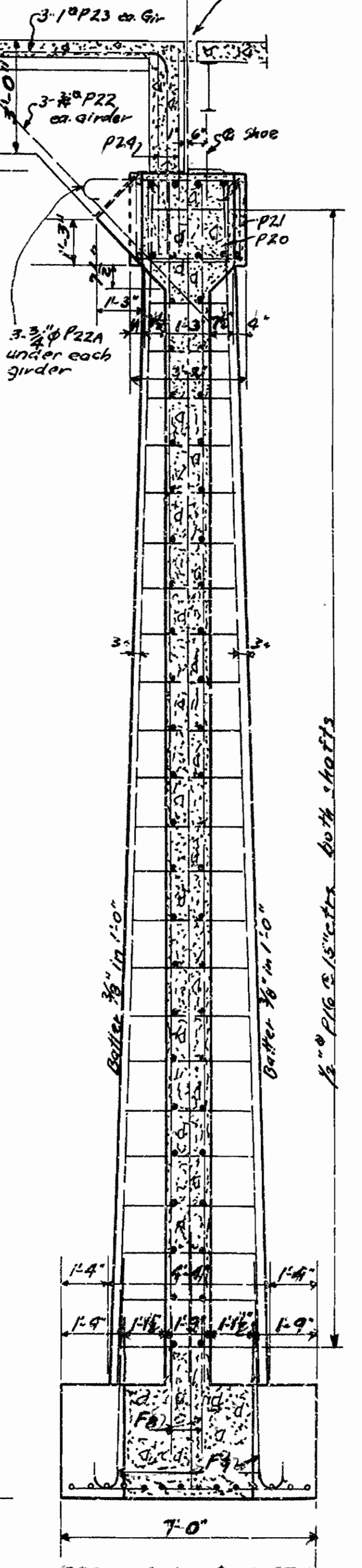
Mark	size	length	Banding Diagrams	
			A	B
F13	1/4"	6'-0"	5'-0"	5'-0"
F9	1/4"	7'-0"	6'-0"	6'-0"
F12	1/4"	6'-6"	5'-6"	5'-6"
P1	1/4"	varies	varies	varies
P2	3/8"	6'-3"	4'-3"	6"
D22	1/4"	6'-6"	4'-0"	6"
F11	3/4"	12'-6"	11'-0"	6"
F14	3/4"	9'-6"	8'-0"	6"
P22	3/4"	4'-9"	3'-3"	6"
P2	1/2"	varies	varies	varies
P3	1/2"	varies	varies	varies
P10	1/2"	8'-11"	7'-0"	6"
P16	3/4"	varies	varies	varies
D20	3/4"	9'-5"	7'-0"	6"
P21	3/4"	10'-4"	7'-10"	6"
D20	1/2"	varies	varies	varies
P22	3/4"	7'-7"	4'-8"	6"
P25	3/4"	7'-9"	4'-10"	6"
P14	3/4"	6'-11"	5'-11"	6"
D25	1"	10'-1"	8'-11"	6"
F13	1/4"	15'-6"	8'-3"	6'-6"
F14	1/4"	15'-3"	8'-2"	6'-0"
F15	1/4"	12'-3"	6'-8"	6'-0"



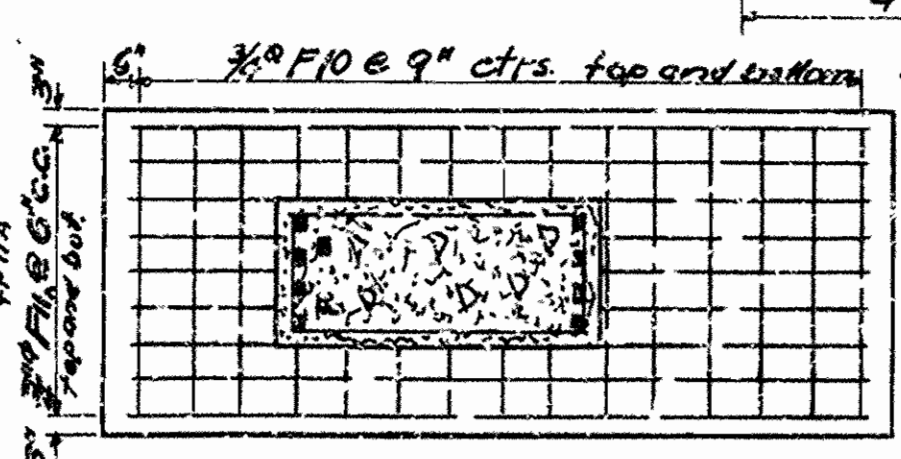
ELEVATION OF PIERS



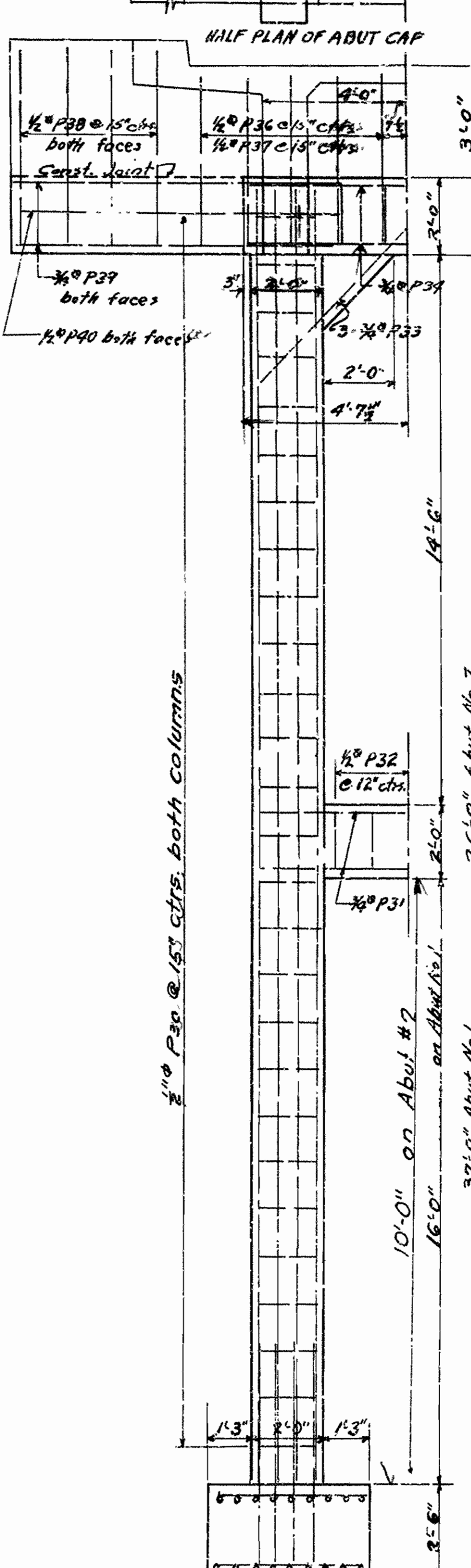
FOOTINGS PLAN - PIERS



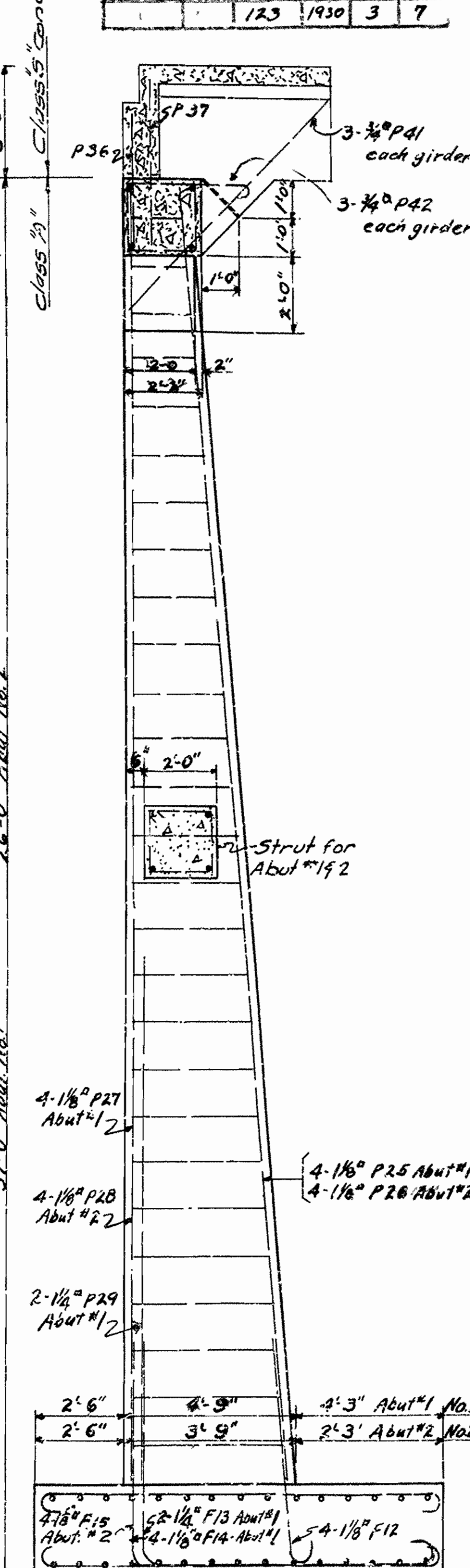
SECTION ON E OF PIERS



FOOTINGS PLAN - ABUTS.



ELEV. ABUTS



SECTION ON E OF ABUTS

DETAILS BENTS, PIERS & ABUTMENTS
 HAGERVILLE-SAND GAP RD.
 JOHNSON CO.

ROUTE 123 SEC. 3

ARKANSAS STATE HIGHWAY COMMISSION
 LITTLE ROCK, ARK.

Drawn By: H.B. Date: 2-10-31
 Traced By: M.B.H.H. Date: 2-10-31
 Checked By: Date:
 BRIDGE NO. 1597 DRAWING NO. 3049

M.B. Gorman
 BRIDGE ENGINEER

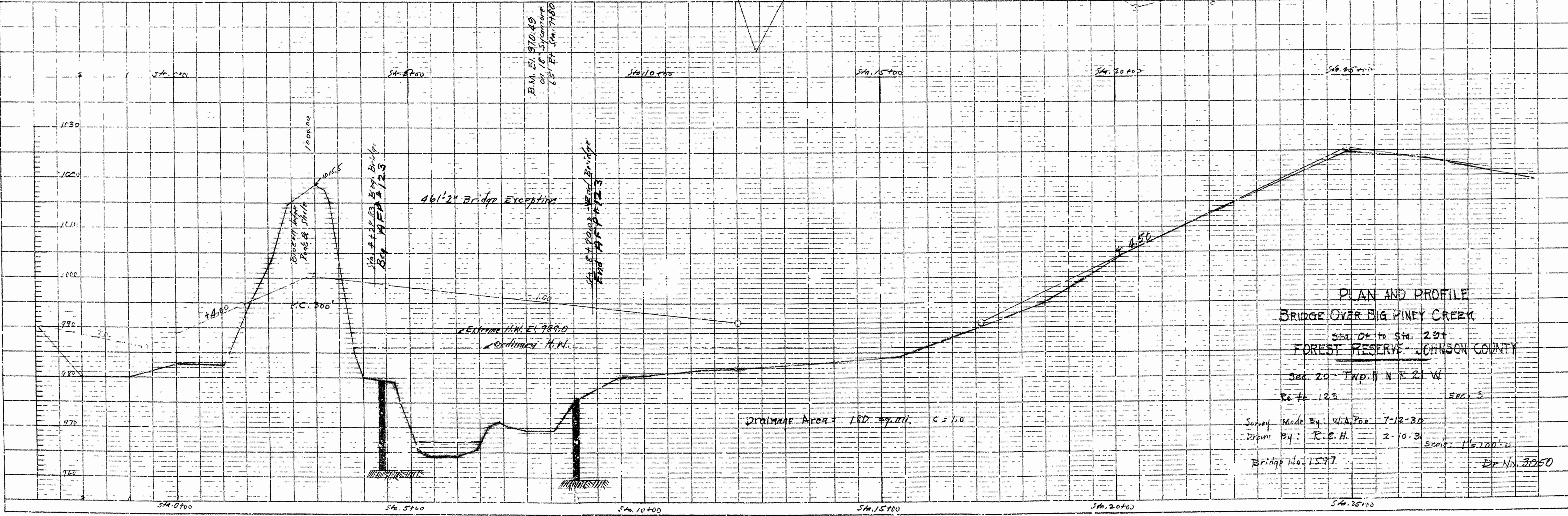
FED. ROAD DIST. NO.	STATE	FED. AID PROJ. NO.	FISCAL YEAR	SHEET NO.	TOTAL SHEETS
15	ARK.	123	1930	7	7

FISCAL YEAR	JOB NO.	SHEET NO.	TOTAL SHEETS
1930	8160	7	7



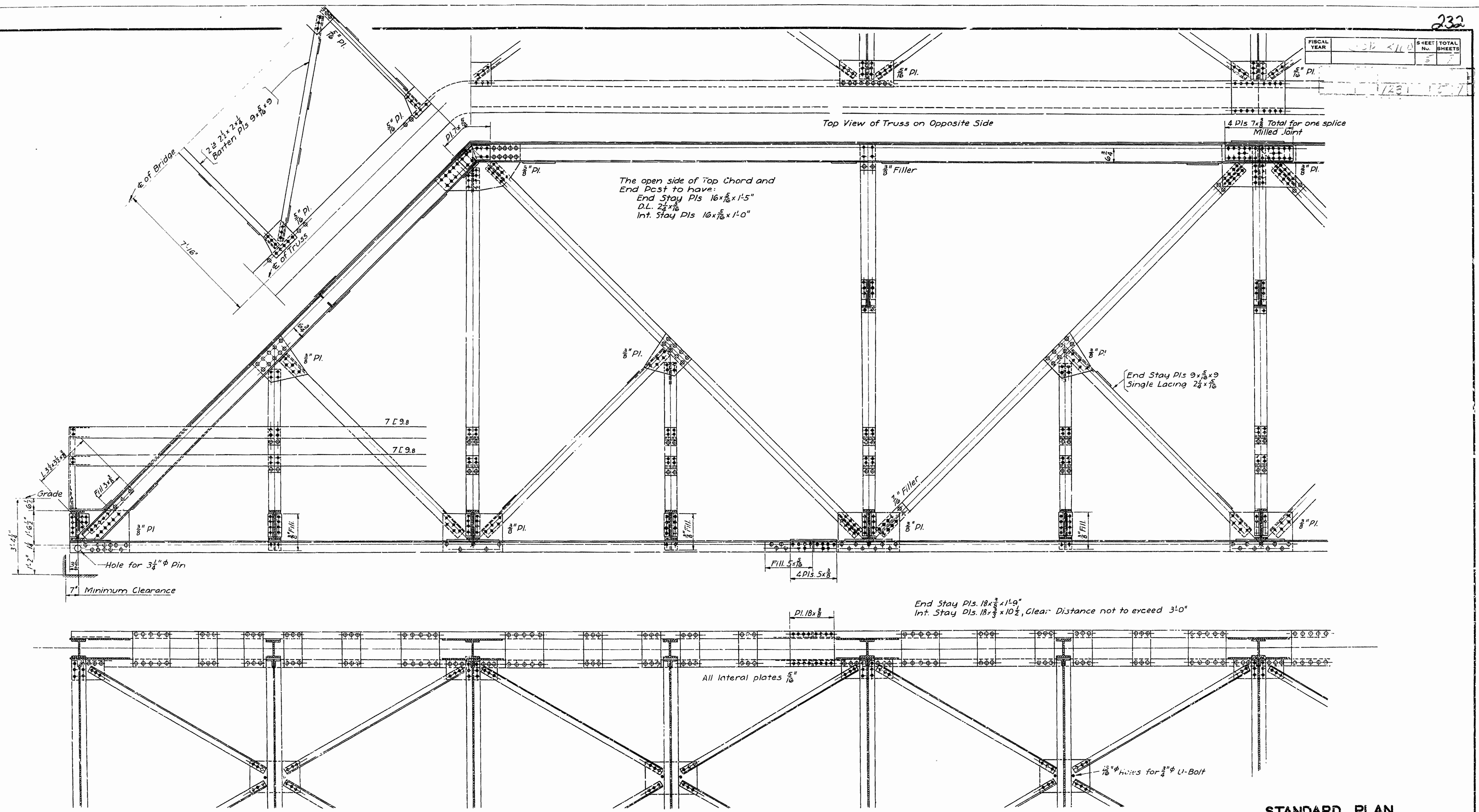
PLAN
 SURFACE
 NOT TO SCALE
 SEE SHEET 6

PROFILE
 SEE SHEET 6



PLAN AND PROFILE
 BRIDGE OVER BIG PINEY CREEK
 Sta. 0+00 to Sta. 29+
 FOREST RESERVE - JOHNSON COUNTY
 Sec. 20 - Twp. 11 N R. 21 W
 R. # 123 SEC. 5
 Survey Made By: V. A. Poe 7-12-30
 Drawn By: R. E. H. 2-10-31
 Scale: 1" = 100' H
 Bridge No. 1597
 Dr. No. 3060

FISCAL YEAR	1910	SHEET TOTAL	7
		No. SHEETS	



STANDARD PLAN
140'-0" THROUGH TRUSS SPAN
12'-0" CLEAR ROADWAY

ROUTE 52
ARKANSAS STATE HIGHWAY COMMISSION
 LITTLE ROCK, ARK.
 Drawn By: A Date: 2-24-31
 Traced By: J.L. Date: 2-26-31
 Checked By: Date: _____
 Scale: $\frac{1}{2}$ in. = 1 ft.
BRIDGE NO. DRAWING NO. 2401

M.B. Gower
 BRIDGE ENGINEER

