

STATE OF ARKANSAS  
STATE HIGHWAY COMMISSION

STATE	273-B	1931	1	4
FED. DIST. NO.	6	ARK.	276-A	1931
FISCAL YEAR	1931	JOB NO.	10-179	SHEET NO.
			1	TOTAL SHEETS
				26

INDEX OF SHEETS

Drawg. No.	Job No.	Sheet No.	Title
1	10-179	3116	Title sheet
2	10-179	3117	Layout Br. #1667
3	10-179	3118	Details Abutment Br. #1667
4	10-179	2355	Details 35' R.C.D. 27'2" h. y. Br. #1667
5	10-179	3119	Layout Br. #1508
6	10-179	3120	Abutment Details Br. #1508 + 1662
7	10-179	2413	Details 80'-0" Low Truss Br. #1508
8	10-179	3121	Layout Br. #1660
9	10-179	3122	Details Superstructure Br. #1660-1661
10	10-179	3123	Layout Br. #1661
11	10-179	3124	Layout Br. #1662
12	10-179	3125	Detail Abut. No. 1
13	10-179	3126	Details Abut. No. 1
14	10-179	3127	Layout Br. No. 1663
15	10-179	3128	Layout Br. No. 1664
16	10-179	3129	Details of Piers & Bents Br. No. 1664
17	10-179	2272	Details 30' R.C.D. 20' Rdwy. Br. No. 1664
18	10-179	3130	Layout Br. No. 1665
19	10-179	3131	Layout Br. No. 1666
20	10-179	3132	Layout Br. No. 280 1/2
21	10-179	(Special)	Special approach slab.
22	10-179	W.S. 3	Curve widening
23	10-179	W.S. 3A	Curve super-elevation
24	10-179	C.P. 10	Standard 18' Gates Pavement
9A	10-179	12-A	Detail Abutment No. 2 Bridge #1662
10A	10-179	13-A	Detail 80'-0" thru plate girder

PLAN OF PROPOSED BRIDGES  
ON PARAGOULD-EAST &  
NORTH OF CORNING ROADS  
GREENE & CLAY COUNTIES

ROUTE 25 SEC. 9  
67 22  
JOB NO 10-179

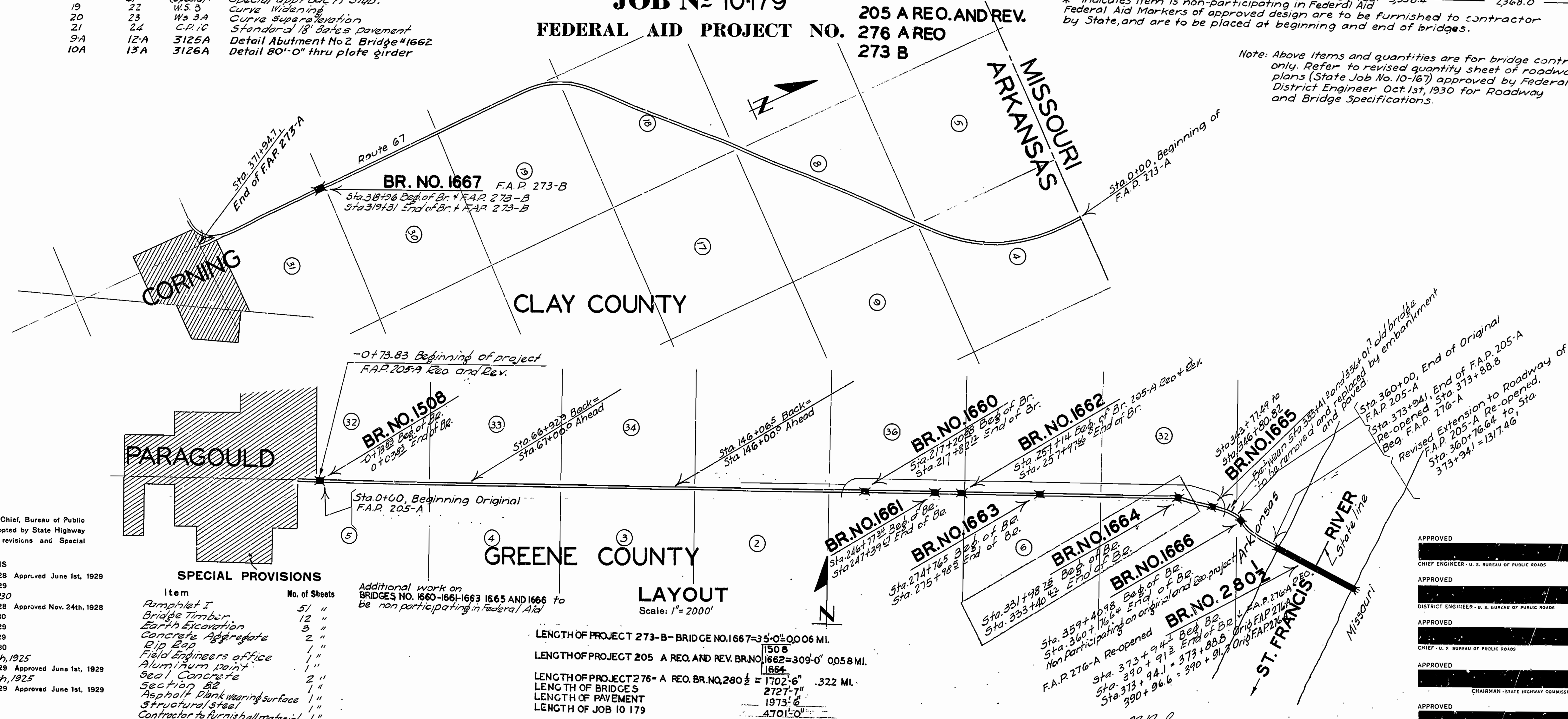
FEDERAL AID PROJECT NO. 205 A REO. AND REV.  
276 A REO  
273 B

QUANTITIES

Item No.	Item	Unit	Job 10-179	F.A.D. 273-B	F.A.D. 205-A (Reo + Rev.)	F.A.P. 276-A
* 52412	Earth Excavation	Cu. Yds.	1347			
13	Dry Excavation for structures	Cu. Yds.	1,648	102	1,499	
13	Wet Excavation for structures	Cu. Yds.	1,381	331	1,050	
47	Port. Landcement Concrete Pavement	Sq. Yds.	4,320.26			
S.P. #52	Treated Bridge Timber	M. F.B.M.	32,887		2,708.1	
S.P. #52	Untreated Timber Piling	Lin. Ft.	6,070	900	5,170	
S.P. #52	Treated Timber Piling cut off	Lin. Ft.	1,180			
54	Class "A" Concrete	Cu. Yds.	106			
54	Class "S" Concrete	Cu. Yds.	704.89	109.28	595.61	
S.P. #54	Seal Concrete	Cu. Yds.	547.66	45.28	216.78	
55	Reinforcing steel	Cu. Yds.	228.32	37.95	190.37	
56	Structural Steel in Truss Bridges	Lbs.	202,249	21,928	120,557	
* 32	36" Corrugated Metal Pipe	Lin. Ft.	195,100		195,100	
S.P. #63	10' Exp. 10" thick	Lin. Ft.	27'-0"			
74	Concrete Reeling for structures	Cu. Yds.	80		80	
* S.P.	Removal and Reconditioning existing structures	Lin. Ft.	230.4	71	159.4	
S.P.	1 1/2" Asphalt Plank	Sq. Yds.	3,776			3,776
* S.P. & 24	Fine Grading	Sq. Yds.	3,958.4		2,368.0	

\* Indicates item is non-participating in Federal Aid  
Federal Aid Markers of approved design are to be furnished to contractor by State, and are to be placed at beginning and end of bridges.

Note: Above items and quantities are for bridge contract only. Refer to revised quantity sheet of roadway plans (State Job No. 10-167) approved by Federal District Engineer Oct. 1st, 1930 for Roadway and Bridge Specifications.



Specifications approved by Chief, Bureau of Public Roads, September 28, 1925, and adopted by State Highway Commission May 30, 1925 with revisions and Special Provisions as follows:

REVISIONS

Pamphlet A	Revised Sept. 1st, 1928	Approved June 1st, 1929
B	Revised Nov. 1st, 1929	
C	Revised July 1st, 1930	
D	Revised July 1st, 1928	Approved Nov. 24th, 1928
E	Revised Jan. 1st, 1930	
F	Revised Aug. 1st, 1929	
G	Revised June 1st, 1929	
H	Revised Jan. 1st, 1930	
I	Revised May 30th, 1925	
J	Revised Jan. 1st, 1929	Approved June 1st, 1929
K	Revised May 30th, 1925	
L	Revised Jan. 1st, 1929	Approved June 1st, 1929

SPECIAL PROVISIONS

Item	No. of Sheets
Pamphlet I	51 "
Bridge Timber	12 "
Earth Excavation	13 "
Concrete Aggregate	2 "
Rip Rap	1 "
Field Engineers office	1 "
Aluminum paint	1 "
Seal Concrete	2 "
Section 82	1 "
Asphalt Plank wearing surface	1 "
Structural steel	1 "
Contractor to furnish all material	1 "
Fine grading	1 "
Reconditioning of existing struct	1 "

LAYOUT  
Scale: 1" = 2000'

LENGTH OF PROJECT 273-B - BRIDGE NO. 1667 = 35'-0" 0.006 MI.  
1508

LENGTH OF PROJECT 205 A REO. AND REV. BR. NO. 1662 = 309'-0" 0.058 MI.  
1664

LENGTH OF PROJECT 276-A REO. BR. NO. 280 1/2 = 1702'-6" .322 MI.

LENGTH OF BRIDGES  
2727'-7"  
1973'-6"  
4701'-0"

BRIDGE ENGINEER  
STATE HIGHWAY ENGINEER

BRIDGES NO. 1508, 280 1/2  
1660 to 1667 incl. DRAWING NO. 3116

Right of way data

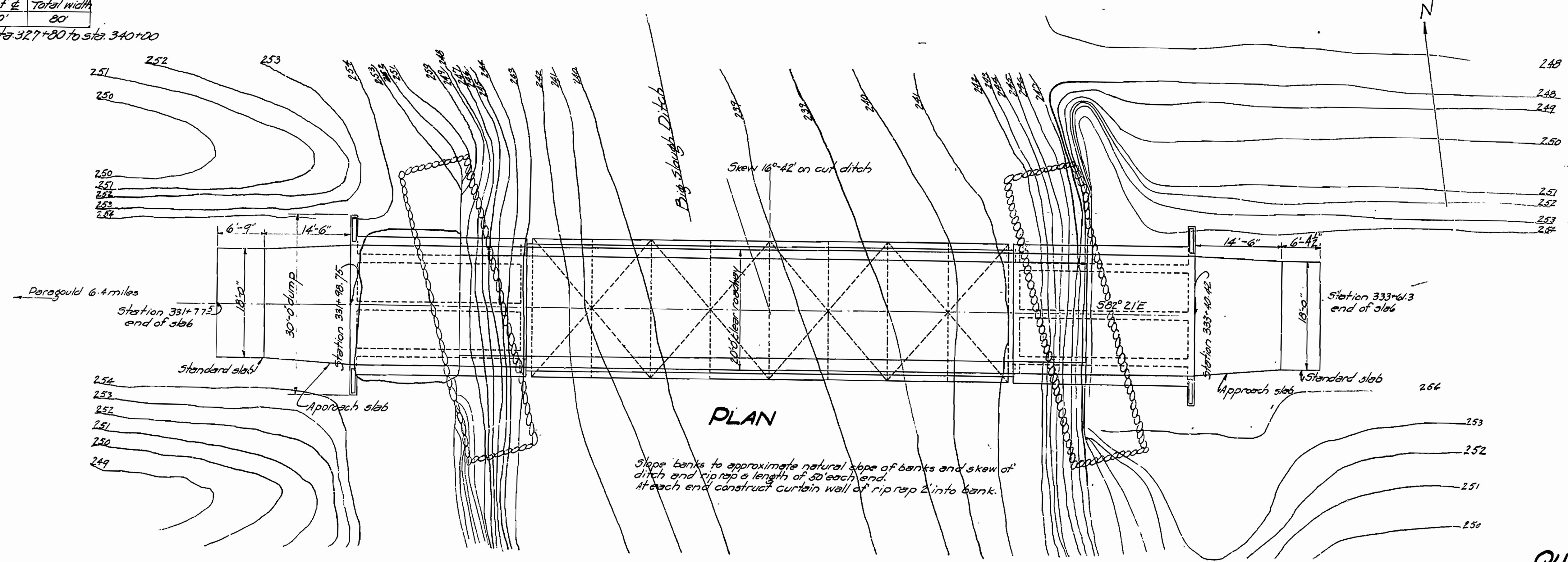
From sta.	To sta.	L. of W.	R. of W.	Total width
-7+71.0	373+94.1	40'	40'	80'

Tangent length extends from sta. 327+80 to sta. 340+00

FISCAL YEAR	Job No.	SHEET NO.	TOTAL SHEETS
1931	10-179	15	26

205-A 1931 12 23  
Rev. 9 Rev.

F205(4) 17 27  
10316 17 27



PLAN

Slope banks to approximate natural slope of banks and skew of ditch and riprap a length of 50' each end. At each end construct curtain wall of riprap 2' into bank.

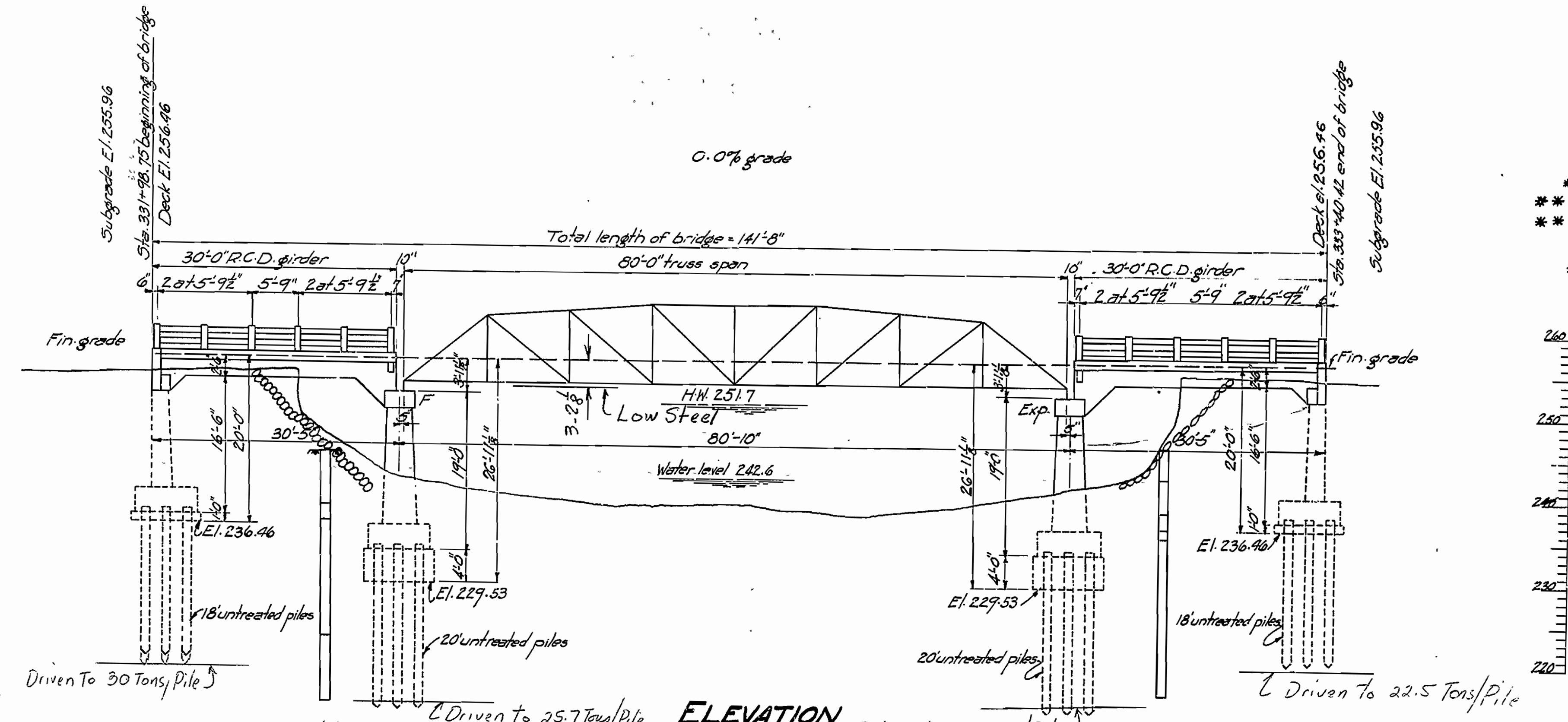
**General notes**

All concrete except seal to be placed in the dry.  
 All concrete in substructure to be Class A unless otherwise noted.  
 For general notes on concrete, piling and steel see superstructure detail sheet.  
 Length of piling shown are assumed for estimated quantities only. Actual lengths to be determined in the field.  
 Field Paint: 1st coat shall be white lead with 20% sublimed blue lead paint as per Standard Specifications. 2nd coat shall be aluminum paint, as per Special Provisions.  
 Expansion joints to be constructed as shown on layout sheet.  
 Volume occupied by embedded pile heads will not be included in pay quantities of concrete in footings.  
 For details of substructure see Drawing No. 3129  
 For details of 80'-0" steel truss see drawing No. 2413  
 " " " 30'-0" concrete span " " " 2172  
 Bridge contractor to complete embankment and concrete slab.  
 Bridge contractor to remove old bridge (material to be used in other structures).

**QUANTITIES**

* Item No. 3P.42	Earth Excavation	137	Cu Yds.
Item No. 13	Dry Excavation for Structures	171	" "
Item No. 13	Wet Excavation for Structures	51	" "
Item No. 5P.52	Untreated Timber Piling	1552	Lin. Ft.
Item No. 54	Class "A" Concrete	142.34	Cu Yds.
Item No. 54	Class "S" Concrete	115.18	" "
Item No. 5P.54	Seal Concrete	77.36	" "
Item No. 53	Reinforcing Steel (1396* Rdwy)	25376	Lbs.
Item No. 56	Structural Steel Truss Bridges	65700	Lbs.
Item No. 69	Rip Rap 1 ft thick	134	Lin. Ft.
Item No. 74	Concrete Railing for Structures	127.68	Sq. Yds.
* Item No. 3P.	Removal of existing structure		Lump Sum
* Item No. 47	Portland Cement Conc. Paving	127.68	Sq. Yds.
* Item No. S.P. & 24	Fine Grading	84.26	" "

\* indicates item is non-participating in Federal Aid.  
 \*\* Roadway quantities



ELEVATION

B.M. #44 El. 255.97  
Nail in telephone pole 24' right of station 333+40

Test hole  
 12' right station 332+20  
 Surface elevation 245.2  
 6.0 yellow coarse sandy clay.  
 2.0 med. blue sand.  
 14.0 med. blue sand & lignite (packed)  
 8.0 fine blue sand & lignite (packed)

Test hole  
 15' left station 333+21  
 Surface elevation 246.9  
 4.0 yellow coarse sandy clay.  
 4.0 blue sandy clay.  
 2.0 coarse blue sand.  
 1.0 fine yellow sand.  
 19.0 fine blue sand & lignite (packed)

Review of EAW 6-15-31 Dimensions and Field Paint note.

LAYOUT OF BRIDGE OVER BIG SLOUGH DITCH PARAGOULD EAST ROAD GREENE COUNTY ROUTE 25 SEC. 9

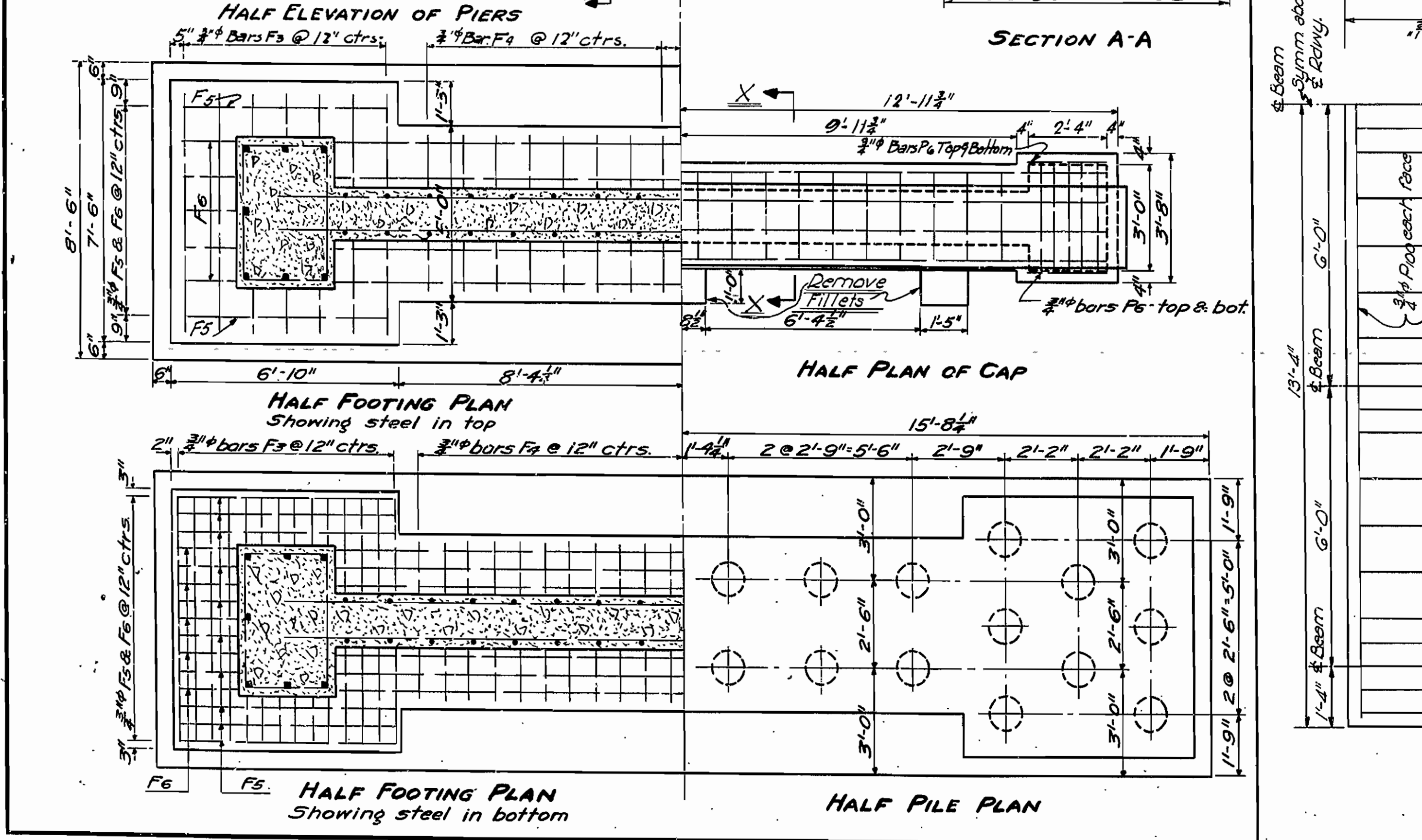
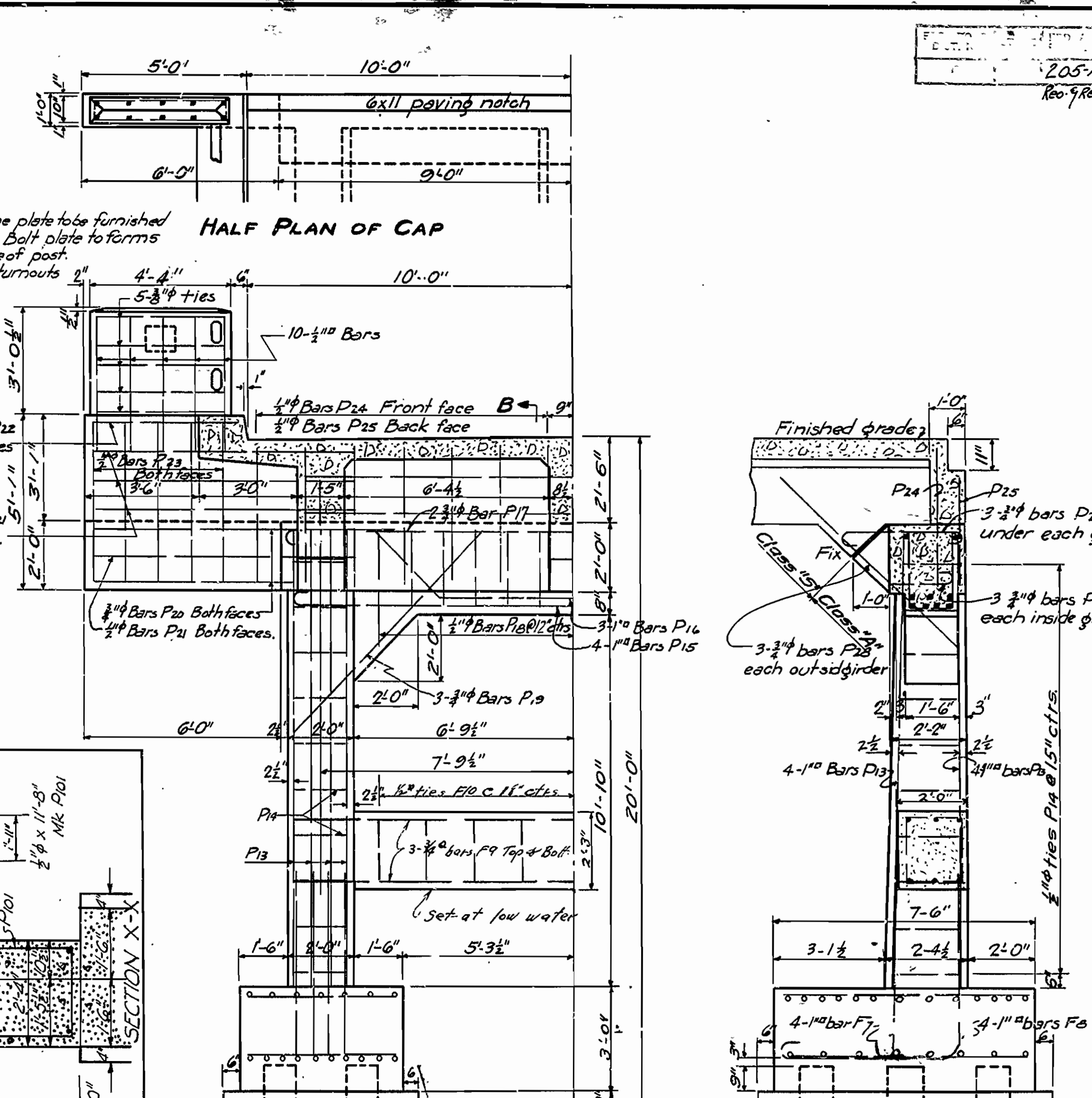
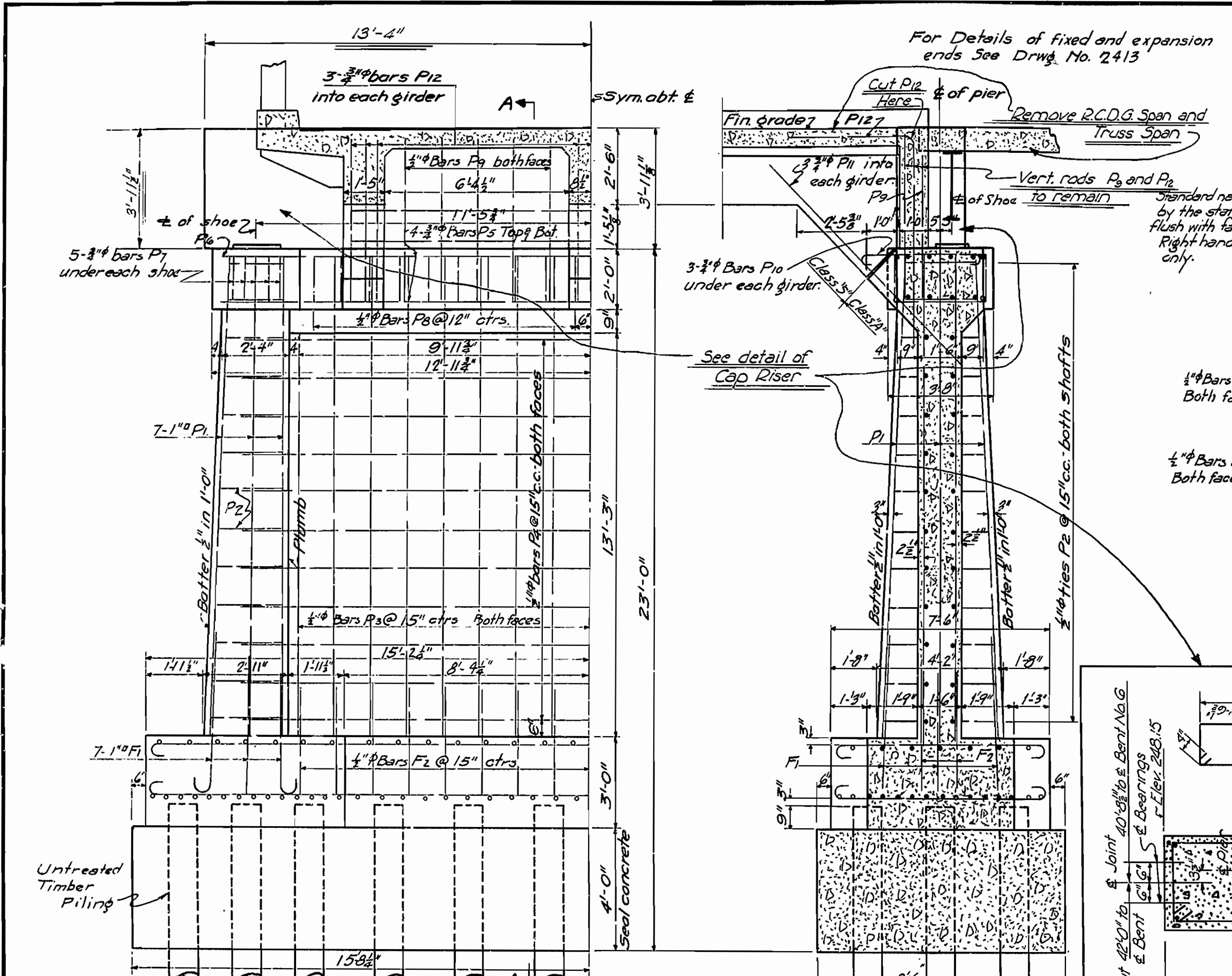
ARKANSAS STATE HIGHWAY COMMISSION LITTLE ROCK, ARK.

Drawn By: EPB Date: \_\_\_\_\_  
 Traced By: EPB Date: 3-6-31  
 Checked By: \_\_\_\_\_ Date: \_\_\_\_\_  
 BRIDGE No. 1664 DRAWING No. 3128

M.B. Spawr BRIDGE ENGINEER

205-A	1931	13	23	FISCAL YEAR	Job No.	SHEET No.	TOTAL SHEETS
				1931	10-179	16	26

7 27  
7 27



BAR SIZE	LENGTH	A	B	BENDING DIAGRAM
F <sub>3</sub> 3/4"	8'-6"	7'-0"	6"	[Diagram]
F <sub>4</sub> 3/4"	6'-0"	4'-6"	6"	
F <sub>5</sub> 3/4"	8'-0"	6'-6"	6"	[Diagram]
F <sub>6</sub> 3/4"	31'-6"	30'-0"	6"	
P <sub>10</sub> 1/4"	18'-7"	12'-2"	8"	[Diagram]
P <sub>16</sub> 3/4"	4'-9"	3'-3"	6"	
P <sub>2</sub> 3/4"	Varies	Varies	Varies	[Diagram]
D <sub>7</sub> 3/4"	10'-7"	3'-3"	1'-7 1/2"	
P <sub>8</sub> 3/4"	9'-3"	2'-7 1/2"	1'-7 1/2"	[Diagram]
F <sub>10</sub> 3/4"	7'-9"	1'-10 1/2"	1'-7 1/2"	
P <sub>14</sub> 1/4"	Varies	Varies	1'-8 1/2"	[Diagram]
F <sub>7</sub> 1/4"	6'-4"	5'-4"		
F <sub>3</sub> 1/4"	11'-1"			[Diagram]
P <sub>2</sub> 3/4"	10'-9"			[Diagram]
P <sub>16</sub> 1/4"	21'-1"			[Diagram]
P <sub>10</sub> 1/4"	6'-7"			[Diagram] Square bends
P <sub>7</sub> 3/4"	8'-3"			[Diagram]

Revised E.A.M. 6-12-31 dimensions 3-2-47 Piers

N.B. Garvin  
BRIDGE ENGINEER

**DETAILS OF PIERS AND END BENTS**  
**BRIDGE OVER BIG SLOUGH DITCH**  
**PARAGOULD-EAST ROAD**  
**GREENE CO.**  
 ROUTE 25 SEC. 9  
**ARKANSAS STATE HIGHWAY COMMISSION**  
 LITTLE ROCK, ARK.  
 Drawn By: F.R.B. Date: 2-7-31  
 Traced By: M.H.H. Date: 2-13-31  
 Checked By: \_\_\_\_\_ Date: \_\_\_\_\_  
 BRIDGE NO. 1664 DRAWING NO. 3129