

FISCAL YEAR	Job No.	SHEET NO.	TOTAL SHEETS
1930	1130	1	24

STATE OF ARKANSAS
STATE HIGHWAY COMMISSION

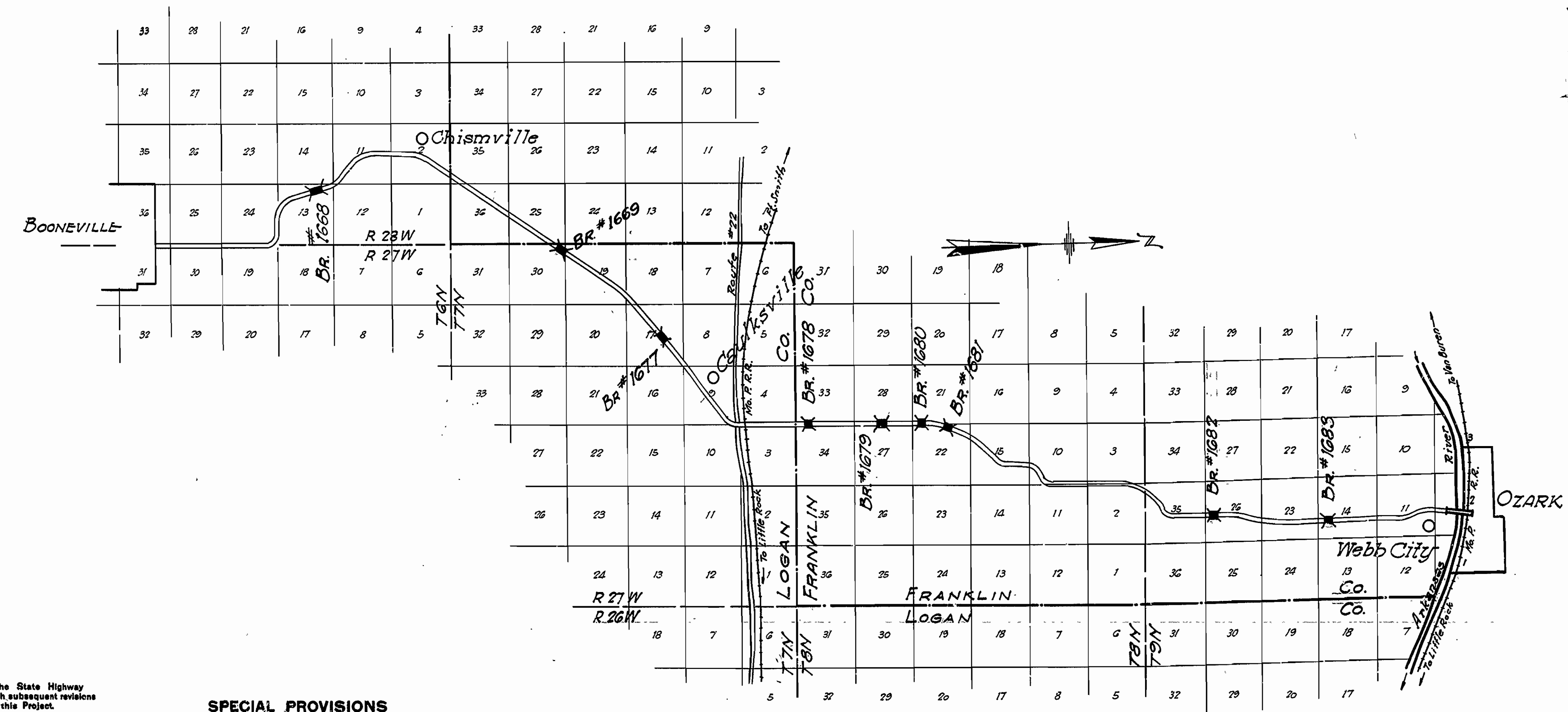
PLAN OF PROPOSED BRIDGES
OZARK SOUTH
LOGAN & FRANKLIN COUNTIES
ROUTE 23 SEC. 2 & 3
JOB NO 1130

INDEX OF SHEETS

Sheet #1	Draw #	Title
#1	#3063	Title Sheet
#2	#3064	Layout of Br. No. 1668
#3	#2071	Details of Std. 19'0" T.T. Trestle 20'0" rdwy. concrete deck.
#4	#2146	" " " " " " " " " " " "
#5	#3065	Layout of Br. No. 1669
#6	#3066	Details of Substructure Br. No. 1669
#7	#2418	" " of Std. 100' Low truss, 20'0" rdwy.
#8	#2075	" " of " " " " " " " " " " " "
#9	#3067	Layout of Bridge No. 1677
#10	#3068	" " " " " " No. 1678 and No. 1679
#11	#3069	" " " " " " " " " " " "
#12	#3070	Details of Substructure Br. No. 1680
#13	#2412	" " of Std. 70' Low truss 20'0" rdwy.
#14	#3071	Layout of Br. No. 1681
#15	#3072	" " " " " " " " " " " "
#16	#3073	Details of Abutment Br. No. 1682
#17	#3074	" " " " " " " " " " " "
#18	#2471	" " of 50' E-beam 20'0" rdwy.
#19	#3075	Supplemental details 50' E-beam 40' Stew.
#20	#3076	" " " " " " " " " " " "
#21	#3077	Layout of Br. No. 1683
#22	#3078	Supplemental details 38' E-beam 30' Stew.
#23	#3079	Layout of Br. No. 1684
#24	#3080	Supplemental details 38' E-beam 20'0" rdwy. concrete deck (Alternate)

QUANTITIES

Item	S.P. & 12	Description	Quantity
"	13	Common Excavation	7265 Cu.Yds.
"	13	Dry Excavation for Strs.	467 " "
"	13	Wet " " "	309 " "
"	13	Solid Rock " " "	282 " "
"	S.P. & 52	Treated Timber Piling	4594 Lin.Ft.
"	S.P. & 52	" " " " Cutoff	438 " "
"	54	Class 'A' Concrete	345.45 Cu.Yds.
"	54	" 'B' " "	35.28 Cu.Yds.
"	56	Structural Steel in Truss bridges	143070 lbs.
"	S.P. & 69	Rip Rap (1' thick)	40 Cu.Yds.
Alternate of, Using Timber Stringers			
"	S.P. & 52	Treated Bridge Timber	151.676 M.F.B.M.
"	54	Class 'S' Concrete	602.32 Cu.Yds.
"	55	Reinforcing Steel	151,715 lbs.
"	56	Struct. Steel in Beam Bridges	65309 lbs.



Use of Using Steel I-Beam Stringers
S.P. & 52 Treated Bridge Timber 151,676 M.F.B.M.
54 Class 'S' Concrete 602.32 Cu.Yds.
55 Reinforcing Steel 151,715 lbs.
56 Struct. Steel in Beam Bridges 65,309 lbs.

- The Specifications adopted by the State Highway Commission, May 30th, 1926 apply with subsequent revisions and Special Provisions noted apply to this Project.
- | Pamphlet | Revised | Date |
|----------|---------|-----------------|
| A | Revised | Sept. 1st, 1926 |
| B | | |
| C | | |
| D | Revised | July 1st, 1928 |
| E | | |
| F | | |
| G | | |
| H | Revised | Oct. 1st, 1928 |
| I | | |
| J | Revised | Jan. 1st, 1929 |
| K | | |
| L | Revised | Jan. 1st, 1929 |

SPECIAL PROVISIONS

Item	No. of Sheets
Bridge Timber	12
Earth Excavation	3
Concrete aggregate	2
Rip Rap	1
Field Engineer's office (100)	1
Aluminum paint	1
Section 8,2	1
Structural Steel	1

LAYOUT
Scale: 1" = 6000'

LENGTH OF PROJECT = 1707'- 10 3/4"
LENGTH OF BRIDGES = 1320'- 2 3/4"
LENGTH OF EMBANKMENT = 387'- 8"

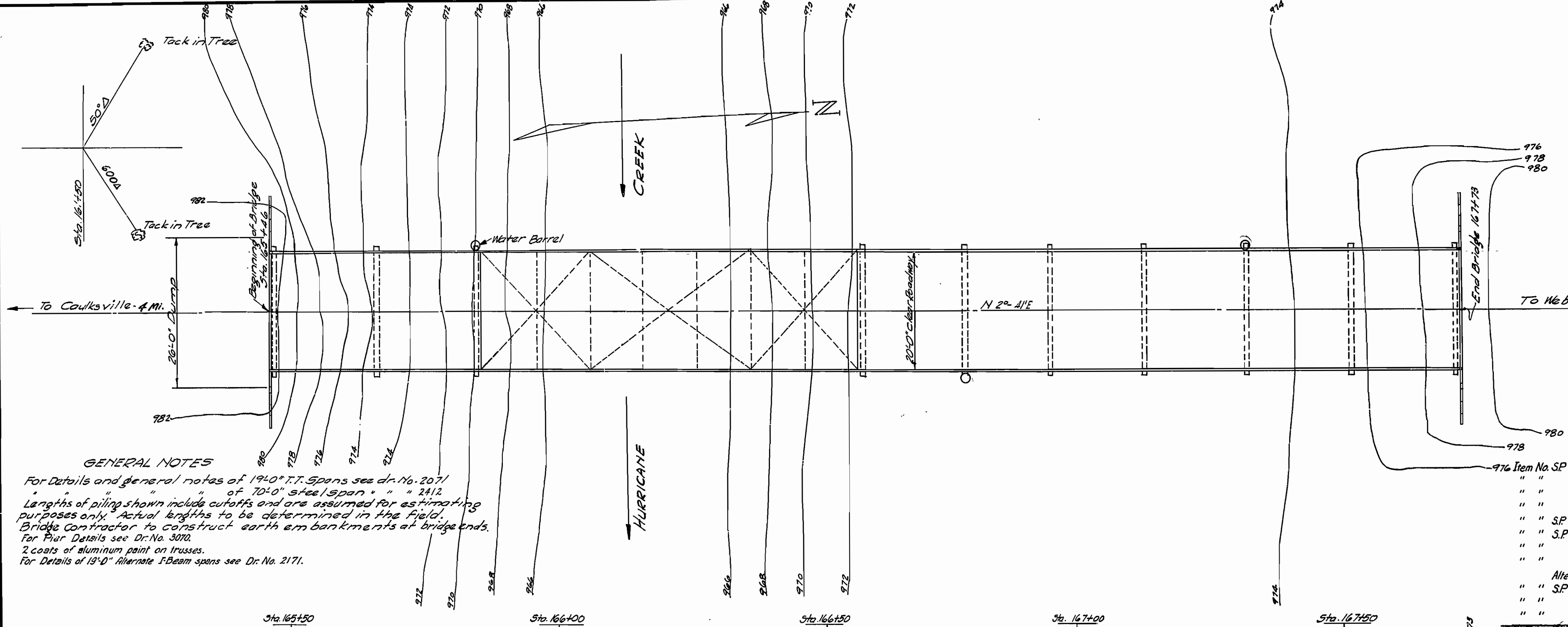
APPROVED _____
CHAIRMAN - STATE HIGHWAY COMMISSION

APPROVED _____
STATE HIGHWAY ENGINEER

M.R. Gann
BRIDGE ENGINEER

BRIDGES No. 1668-69, 77-78, 79-80, 81/DRAWING NO. 3063

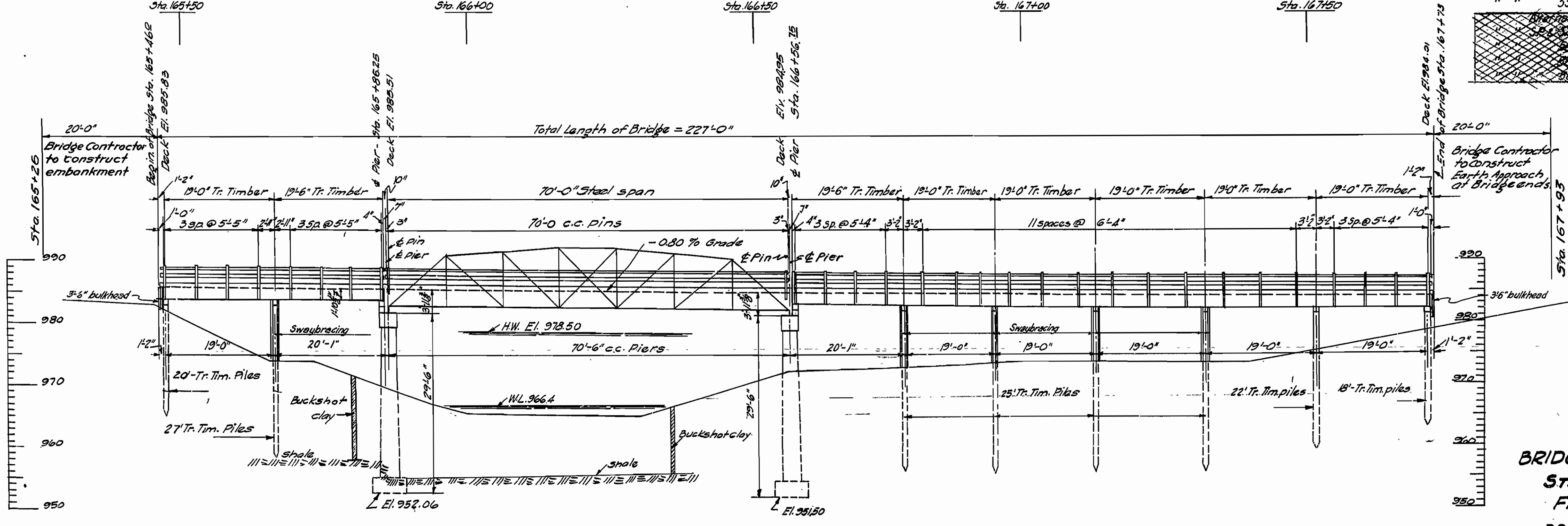
FISCAL YEAR	JOB NO.	SHEET NO.	TOTAL SHEETS
1930	1130	11	24



GENERAL NOTES
 For Details and general notes of 19'-0" T.T. Spans see Dr. No. 2071 of 70'-0" steel span " " 2412
 Lengths of piling shown include cutoffs and are assumed for estimating purposes only. Actual lengths to be determined in the field.
 Bridge Contractor to construct earth embankments at bridge ends.
 For Pier Details see Dr. No. 3070.
 2 coats of aluminum paint on trusses.
 For Details of 19'-0" Alternate S-Beam spans see Dr. No. 2171.

QUANTITIES

976 Item No. SP & 12	Common Excavation	250 Cu. Yds.
" "	13 Dry excavation for structures	55 " "
" "	13 Wet excavation for structures	240 " "
" "	13 Solid rock excavation for structures	59 " "
" "	S.P. & 52 Treated timber piling	804 Lin. Ft.
" "	S.P. & 52 Treated timber pile cut-off	72 " "
" "	54 Class "A" concrete	111.40 Cu. Yds.
" "	56 Structural steel (Truss bridges)	56,000 Lbs.
Alternate with treated timber stringers		
" "	S.P. & 52 Treated bridge timber	19,923 M.F.B.M.
" "	54 Class "S" concrete	109.16 Cu. Yds.
" "	55 Reinforcing steel	32,175 Lbs.



ELEVATION BRIDGE 1680

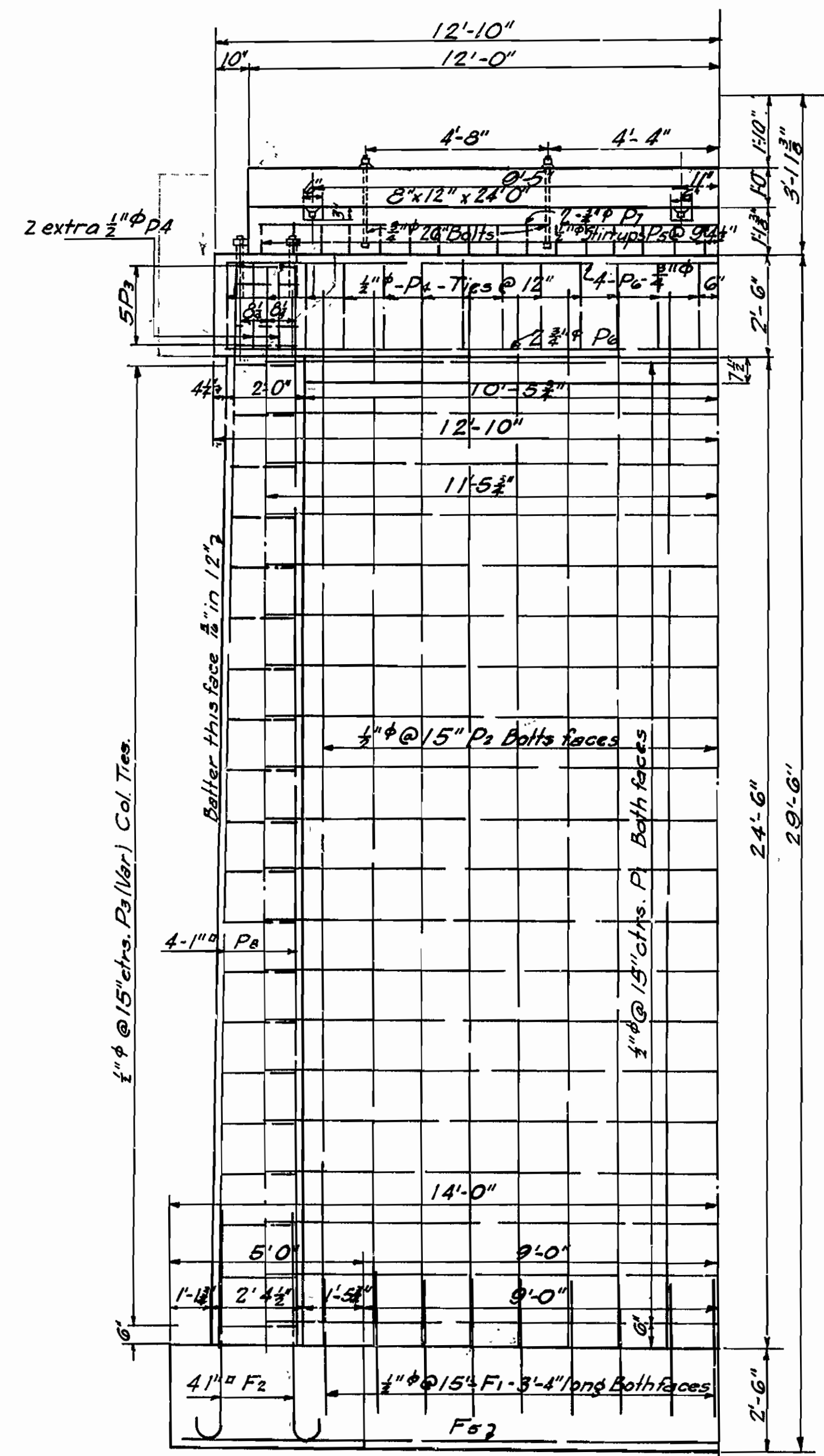
DRAINAGE AREA = 60 Sq. mi. Hilly.

1003	1140	33,211	100
1003	1140	33,211	100
1003	1140	33,211	100
1003	1140	33,211	100

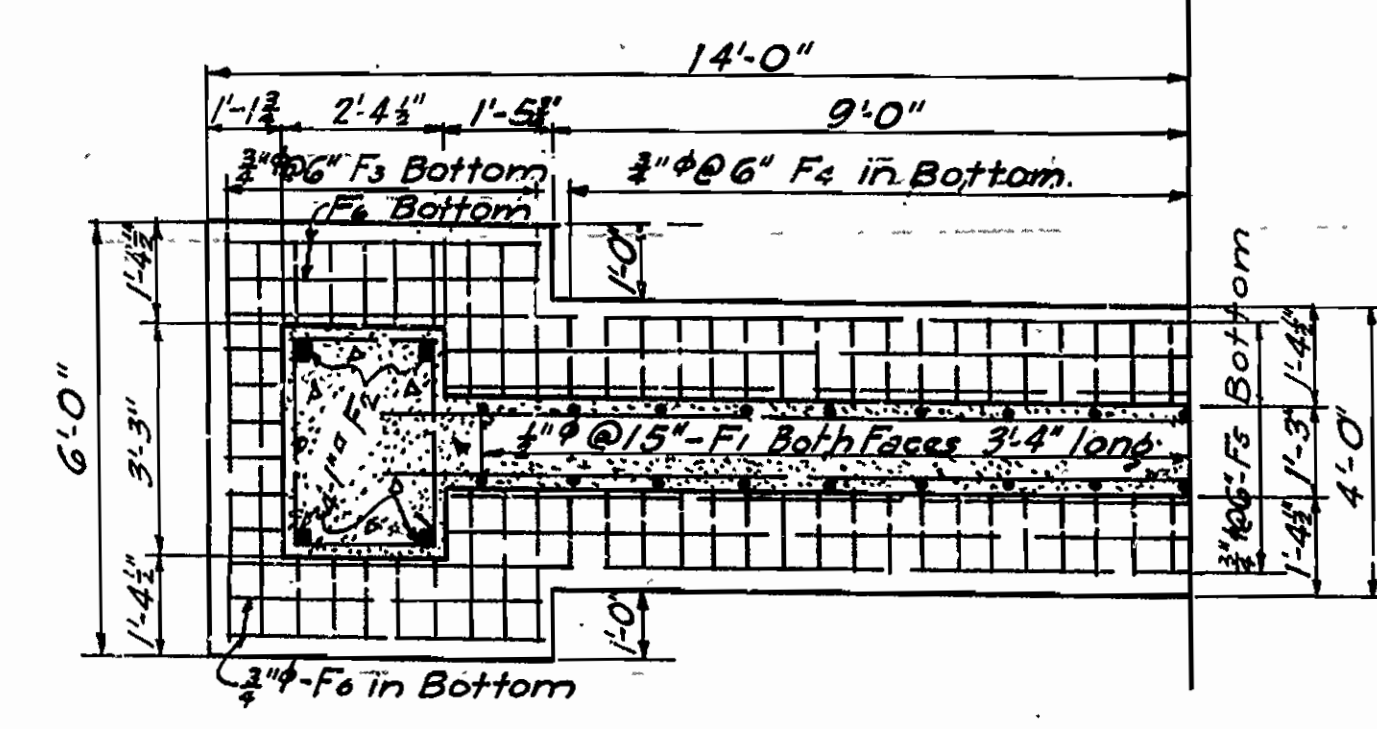
LAYOUT
BRIDGE OVER HURRICANE CREEK
STA 165+46 - STA 167+73
FRANKLIN COUNTY
ROUTE 23 SEC. 3
ARKANSAS STATE HIGHWAY COMMISSION
LITTLE ROCK, ARK.
 Drawn By: R.E.H. Date: 1-22-31
 Traced By: M.K.W. Date: 1-23-31
 Checked By: L.E. Date: 2-18-31
BRIDGE No. 1680 DRAWING NO. 3069
 Scale: 1 in. = 10' ft.



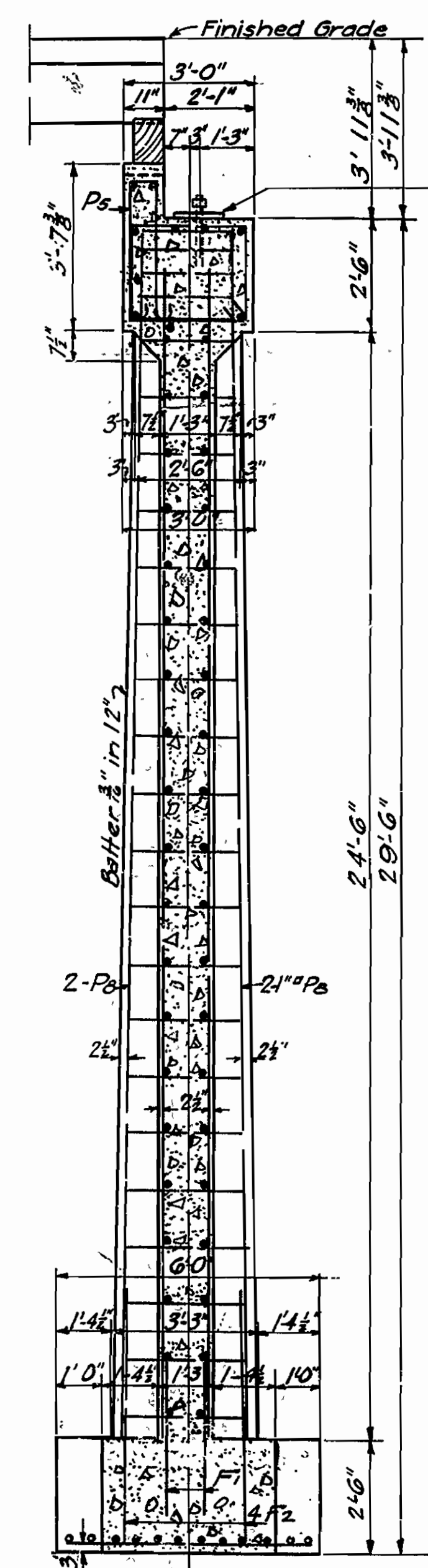
FISCAL YEAR	JOB NO.	SHEET NO.	TOTAL SHEETS
1930	1130	12	24



HALF ELEV. PIERS



HALF PLAN FOOTINGS - PIERS



SEC. THRU PIERS

For Bearing Plates See Drwg No. 2412

MARK	SIZE	LENGTH	BENDING DIAGRAMS
F2	1"φ	6'-6"	
P3	1/2"φ	Varies 0'-5 1/2"	
P4	1/2"φ	10'-4"	
P5	1/2"φ	7'-2"	

GENERAL NOTES.
 All exposed corners to have a 3/4" chamfer.
 All concrete to be class "A" and to be poured in the dry.
 Reinforcing steel to be deformed bars of structural or Intermediate grade. Shop lists and Bending diagrams must be submitted and approved before fabrication is begun.
 Specifications: Arkansas Standard Road and Bridge Specifications Adopted May 30, 1925 and Revised.

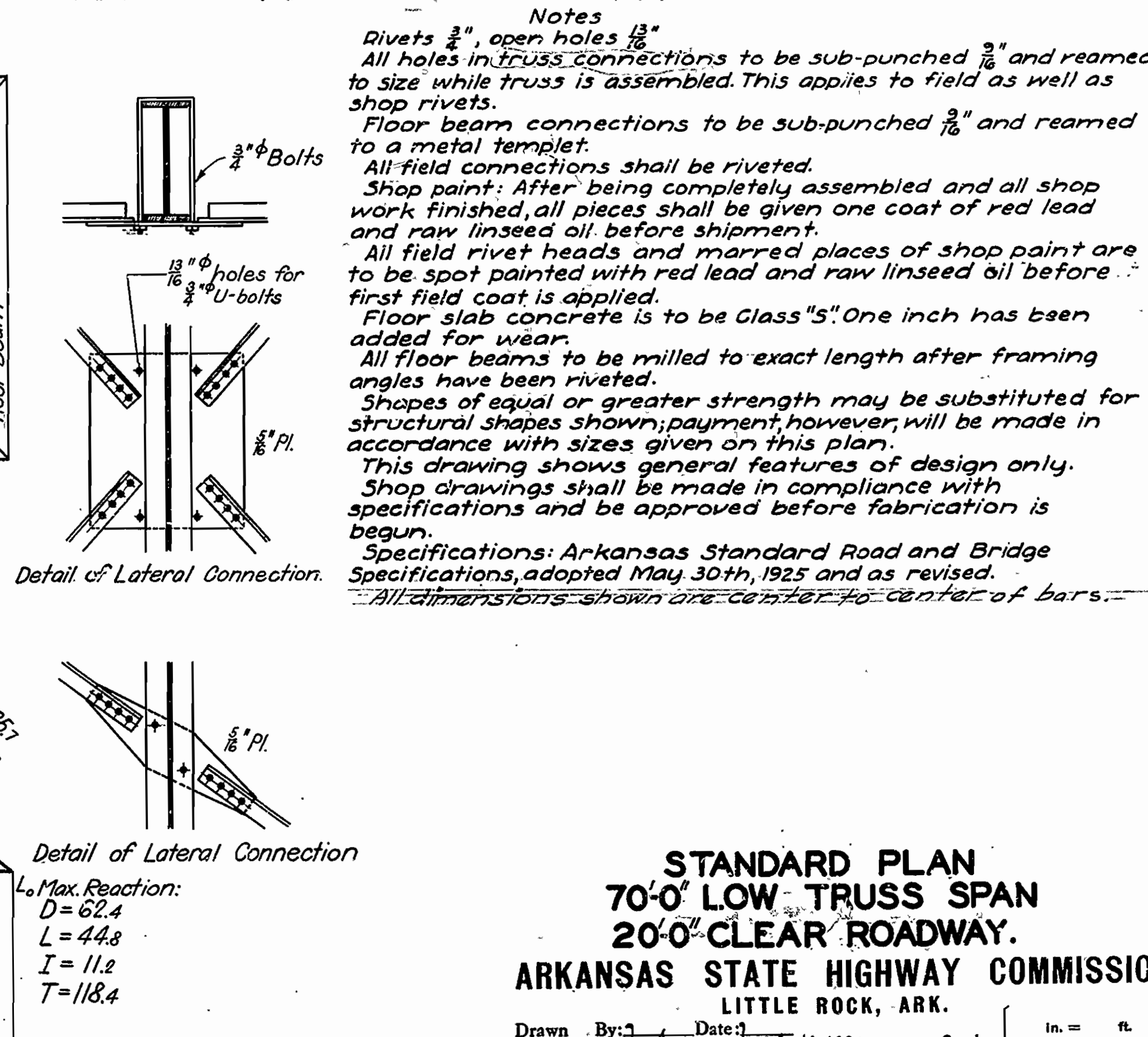
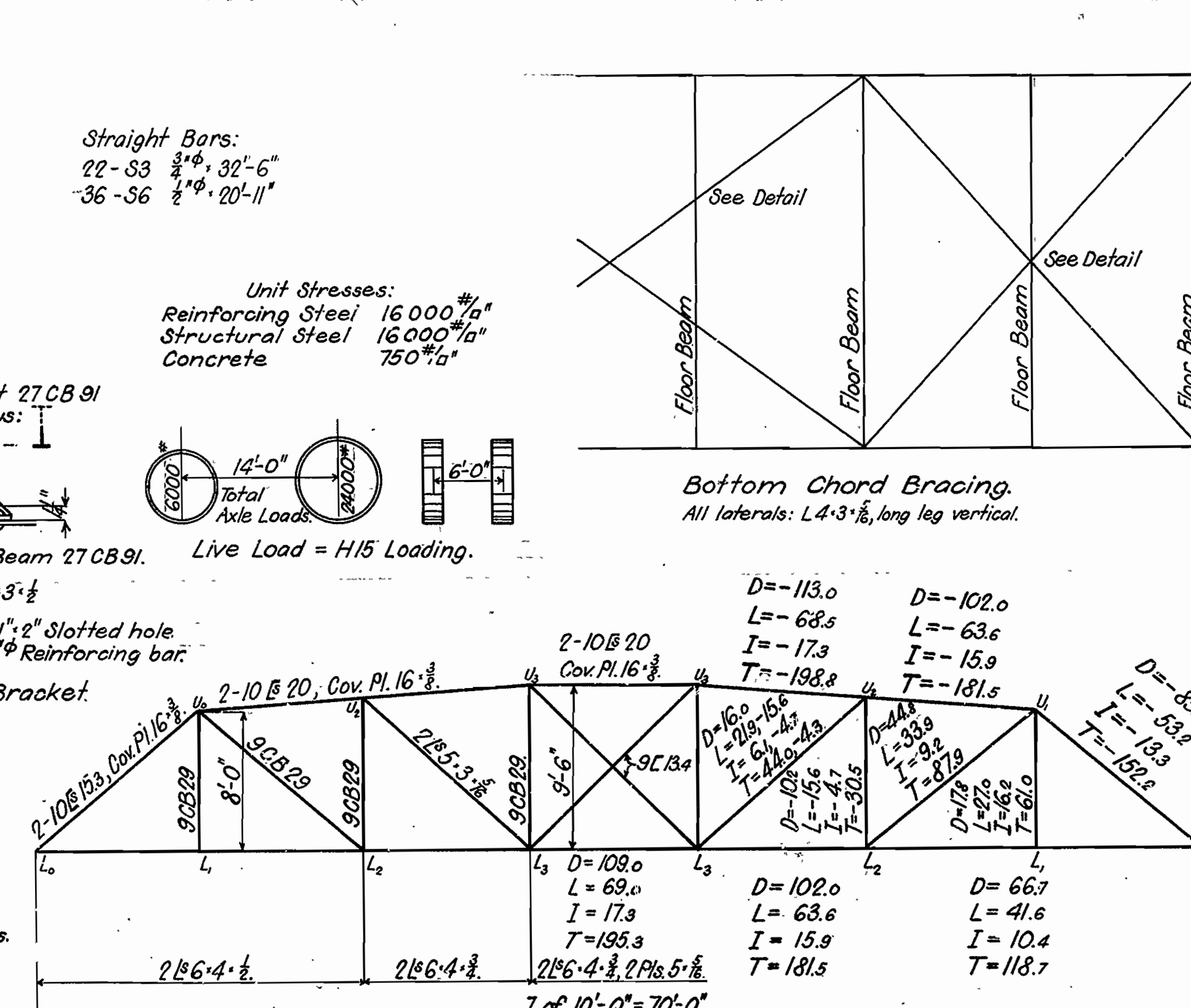
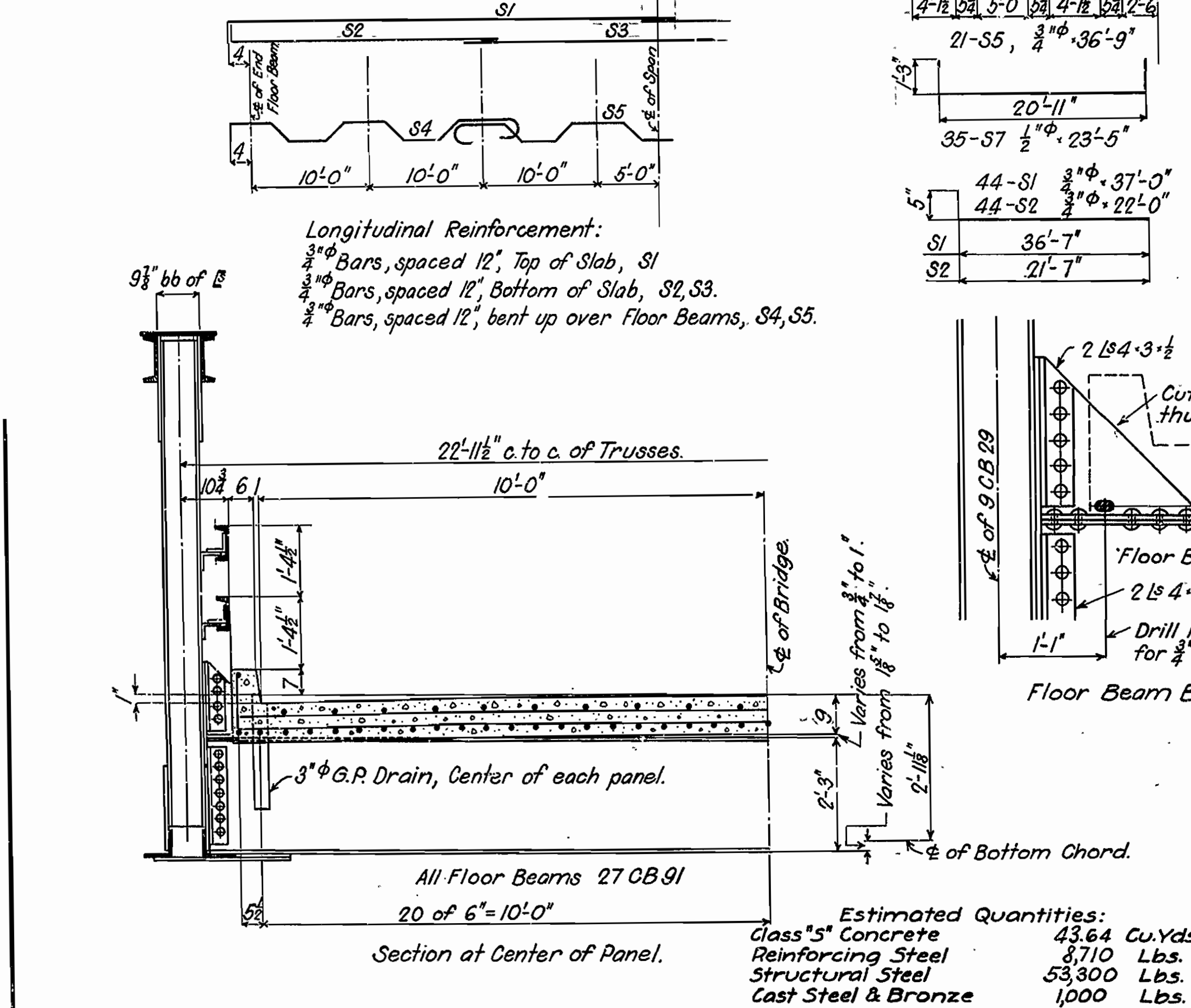
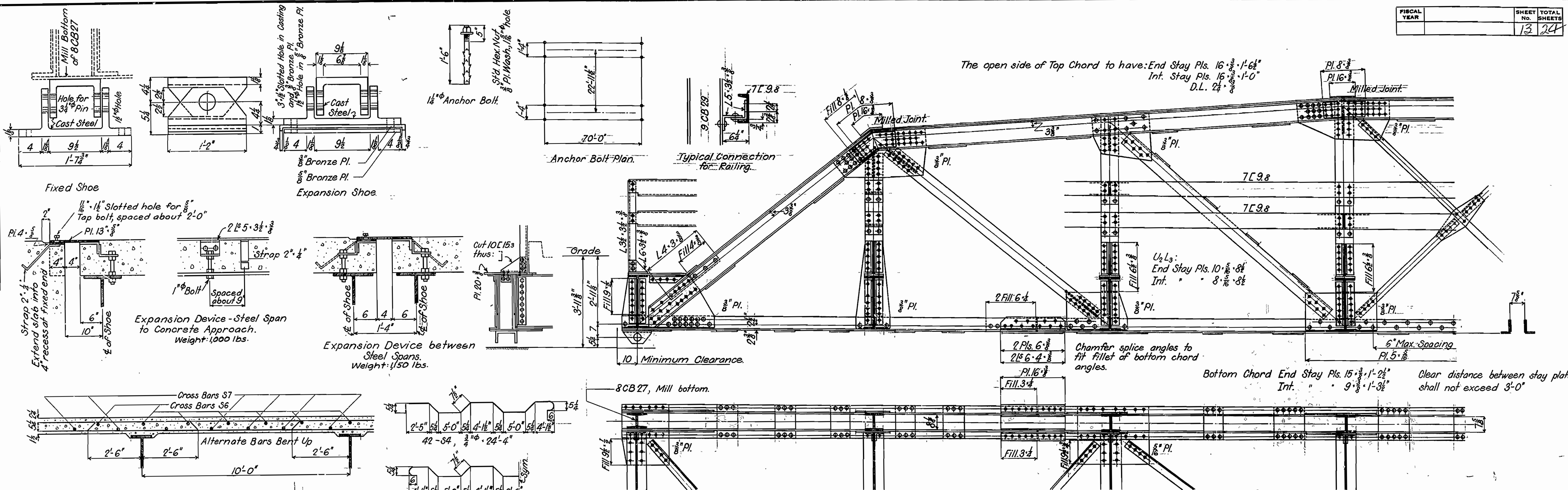
DETAILS OF PIERS
 FOR
 BRIDGE OVER HURRICANE CREEK
 STA. 165+46 TO STA 167+73
 FRANKLIN COUNTY

ROUTE 23 SEC. 3
 ARKANSAS STATE HIGHWAY COMMISSION
 LITTLE ROCK, ARK.

Drawn By: *REH* Date: 1-30-31
 Traced By: *FMM* Date: 2-3-31
 Checked By: *AB* Date: 2-18-31
 Scale: 3/8" = 1'-0"
 BRIDGE NO. 1680 DRAWING NO. 3070

W.B. Lawrence
 BRIDGE ENGINEER

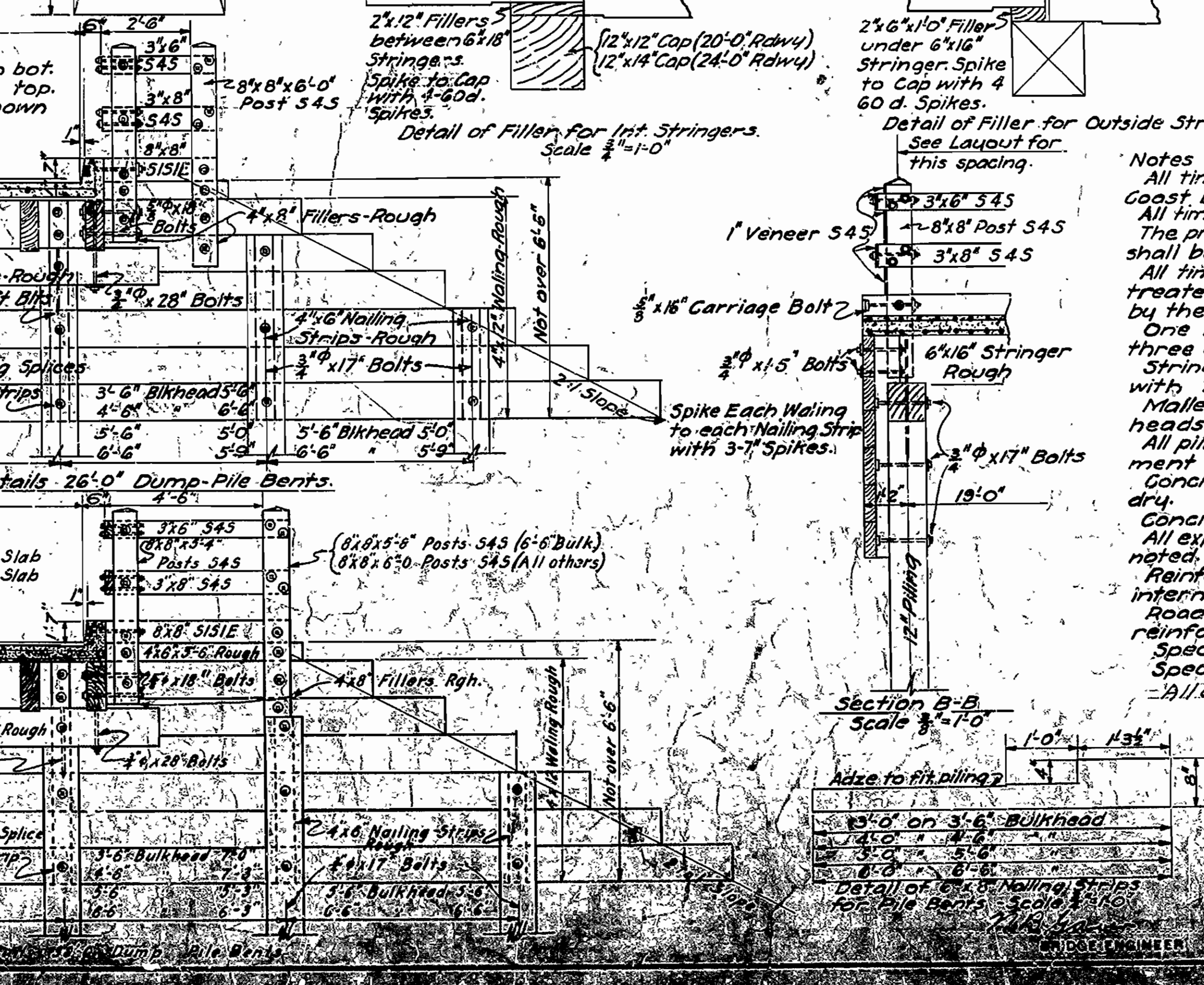
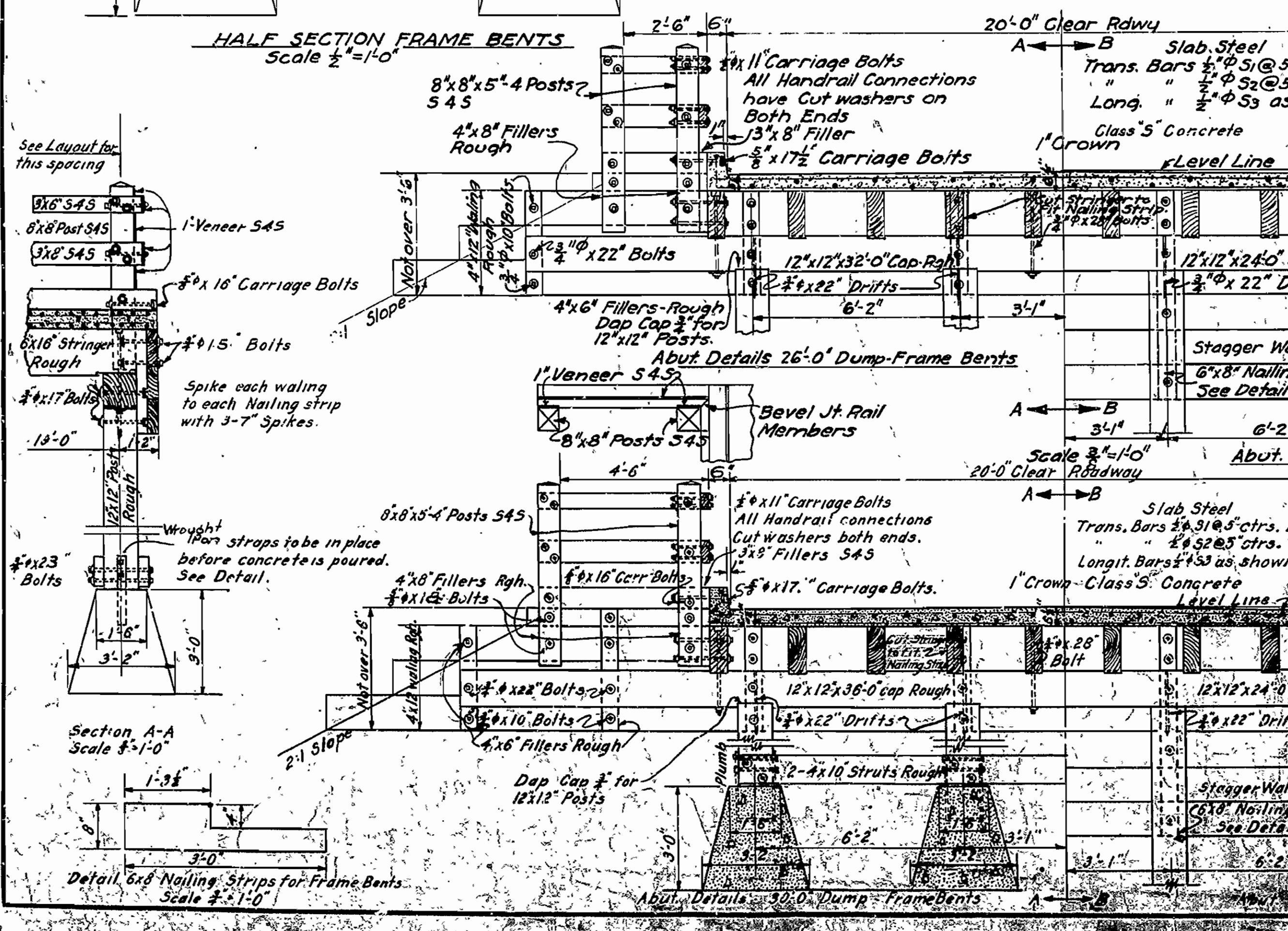
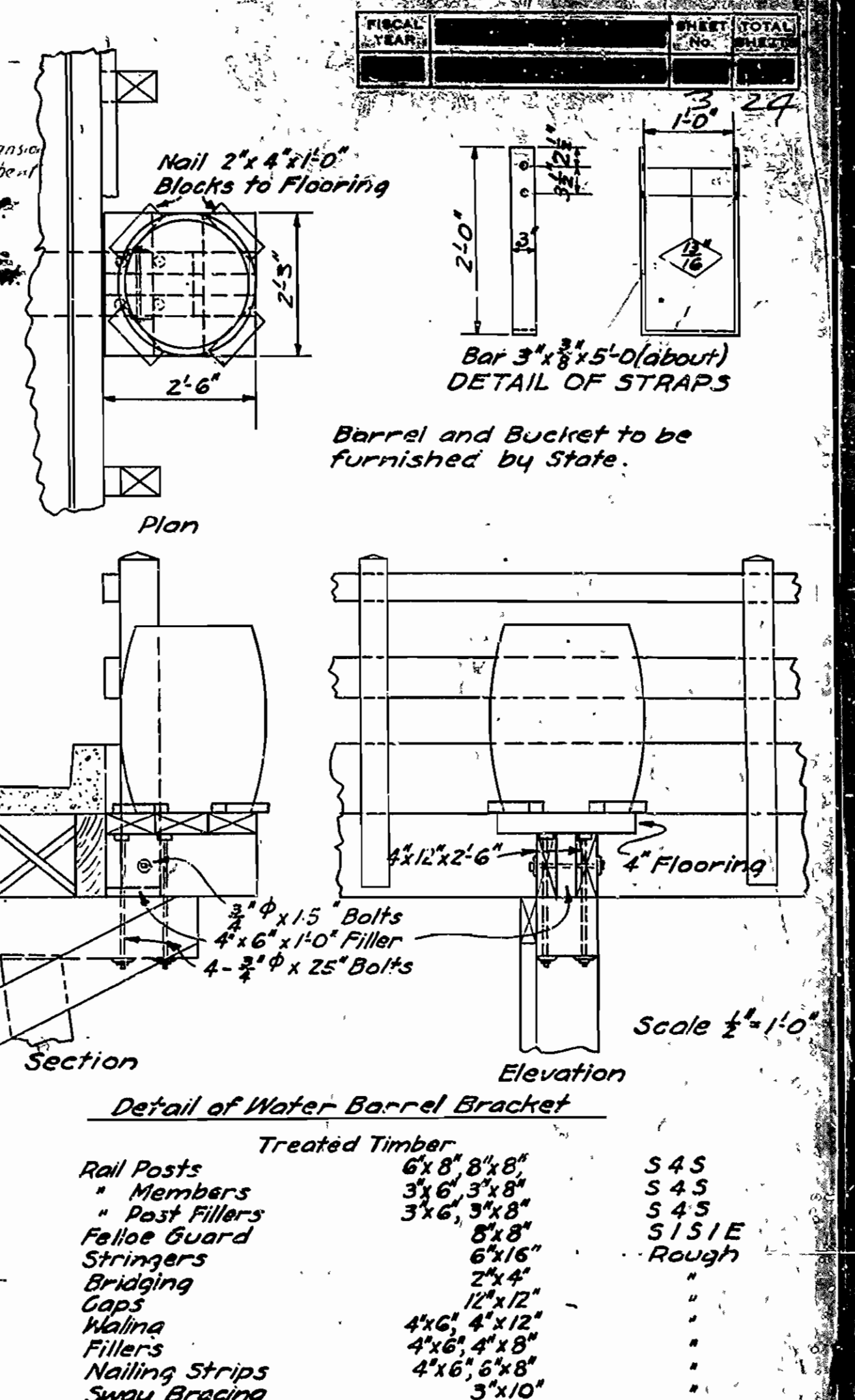
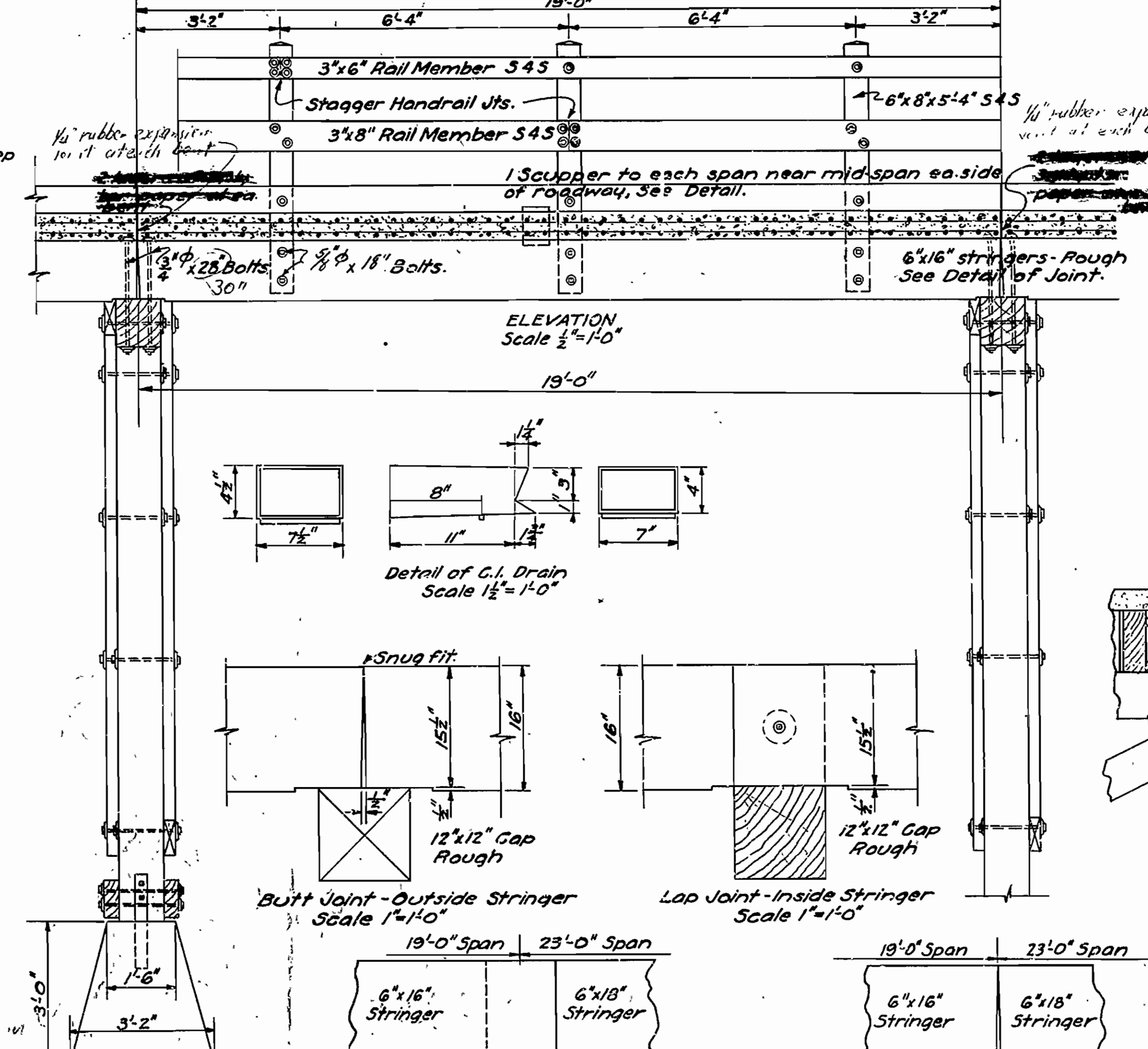
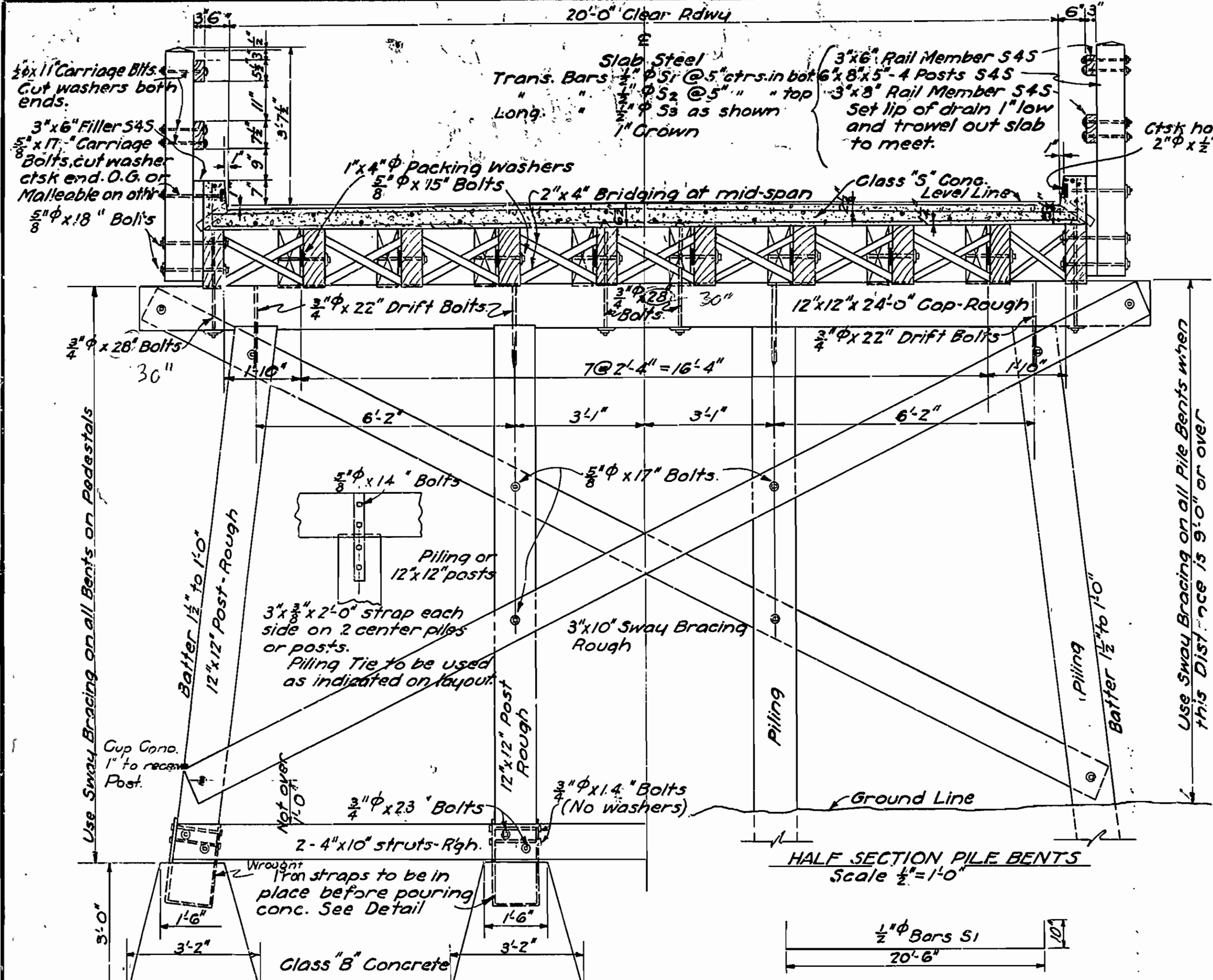
FISCAL YEAR	SHEET NO.	TOTAL SHEETS
	13	24



STANDARD PLAN
70'-0" LOW TRUSS SPAN
20'-0" CLEAR ROADWAY.
ARKANSAS STATE HIGHWAY COMMISSION
LITTLE ROCK, ARK.

Drawn By: [Signature] Date: [Date]
Traced By: [Signature] Date: [Date]
Checked By: [Signature] Date: [Date]

BRIDGE NO. [Number] DRAWING NO. 2412



Treated Timber		
Rail Posts	6x8, 8x8	S4S
Members	3x6, 3x8	S4S
Post Fillers	3x6, 3x8	S4S
Felloe Guard	8x8	S1S1E
Stringers	6x16	Rough
Bridging	2x4	
Caps	12x12	
Walms	2x4	
Fillers	4x6, 4x8	
Nailing Strips	4x6, 4x8	
Sway Bracing	4x6, 6x8	
Posts (Frame Bent Only)	12x12	
Struts	4x10	
Supports (Water Bbl)	4x12	
Flooring	4x10	
Blocks	2x4	
Fillers	4x6	

Untreated Timber		
Veneer	1x6, 1x8	S4S

Notes

Veneer
All timber and piling to be Southern Yellow Pine or Pacific Coast Douglas Fir.
All timber to be framed and bored before treatment.
The preservative used for the treatment of timber and piles shall be of Grade 1 of Creosote Oil for Structural Timber.
All timber, except 1" Veneer on Handrail Turnouts, shall be treated with a ten (10) pound treatment of creosote oil by the empty cell process.
One inch veneer boards on handrail turnouts to be given three coats of white lead paint.
Stringers to be dapped at ends and to be spiked to cap with 2-60 d. nails in each end of stringer.
Malleable or cast iron washers to be used under all heads and nuts of machined bolts unless otherwise noted.
All piling shall be treated with twelve (12) pound treatment of creosote oil by the empty cell process.
Concrete pedestals to be Class 'B' and to be poured in the dry.
Concrete deck to be Class 'B'.
All exposed corners to have 1/2" chamfer unless otherwise noted.
Reinforcing steel to be deformed bars of structural or intermediate grade.
Roadway drains to be paid for at unit price bid for reinforcing steel.
Specifications: Ark. Standard Road & Bridge Specifications, adopted May 30, 1925 & Revised.
All dimensions shown are center to center of bar.

DETAILS
19'-0" STANDARD TIMBER TRESTLE
CONCRETE FLOOR 20'-0" CLEAR RDWY.
ARKANSAS STATE HIGHWAY DEPARTMENT
LITTLE ROCK, ARK.
Drawn By: E.P.E. Date: 12-23-23
Traced By: E.P.E. Date: 1-20-24
Checked By: E.P.E. Date: 1-20-24
BRIDGE NO. [] DRAWING NO. 2077