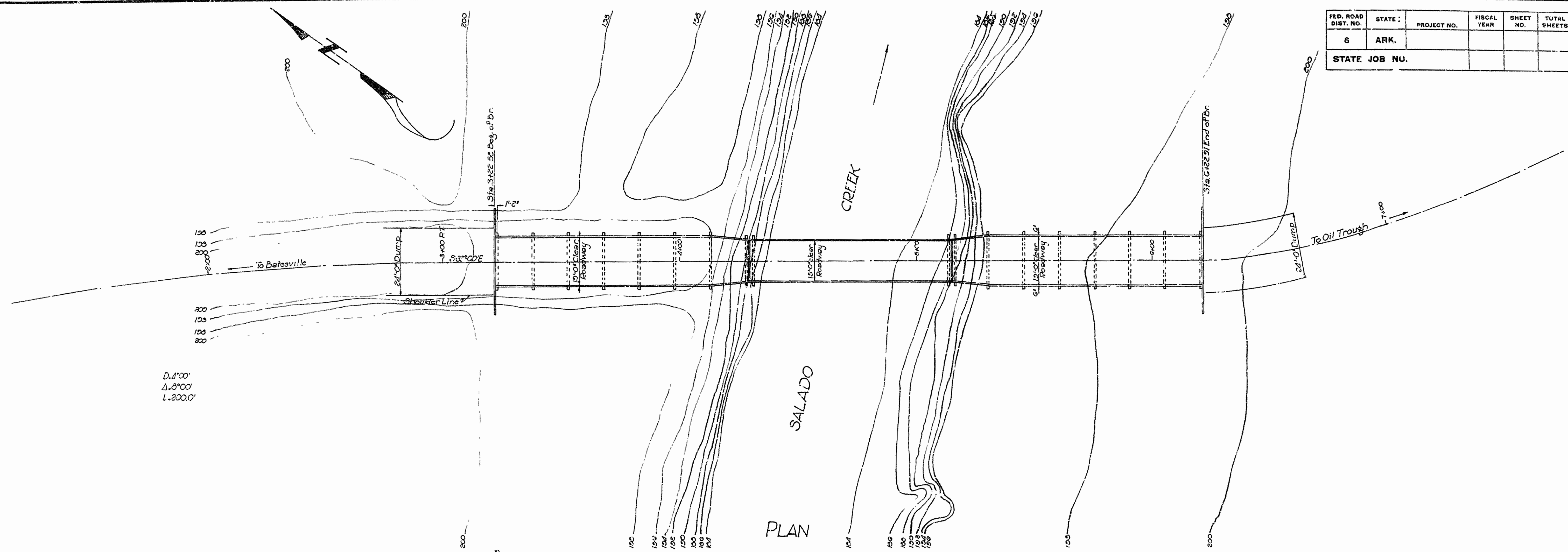
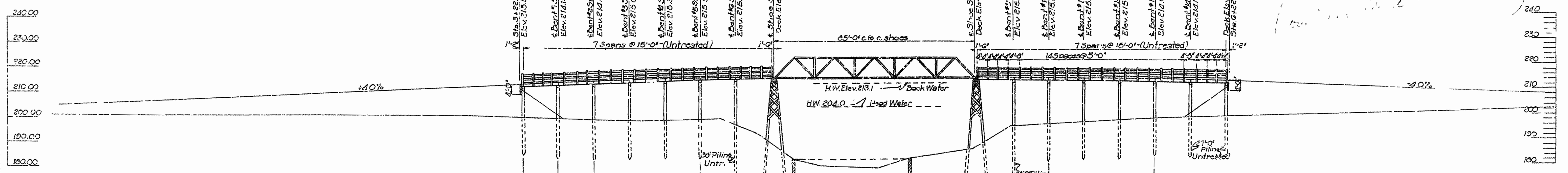


FED. ROAD DIST. NO.	STATE	PROJECT NO.	FISCAL YEAR	SHEET NO.	TOTAL SHEETS
6	ARK.				
STATE JOB NO.					



D. 1/100'
 Δ. 3/100'
 L. 200.0'

NOTE:
 For details of Standard Timber Trestle, see Drwg. No 2027
 Truss Span-Use old span removed from Gleise Creek North of Russell
 All timber in this bridge to be untreated except tower bents which are to be treated pins.



Handwritten note:
 Wood (any) ...
 (some structure ...)

D.M.G. Elm stump 30' R.H. Sta. 4+00 Elev 200.00 Assumed

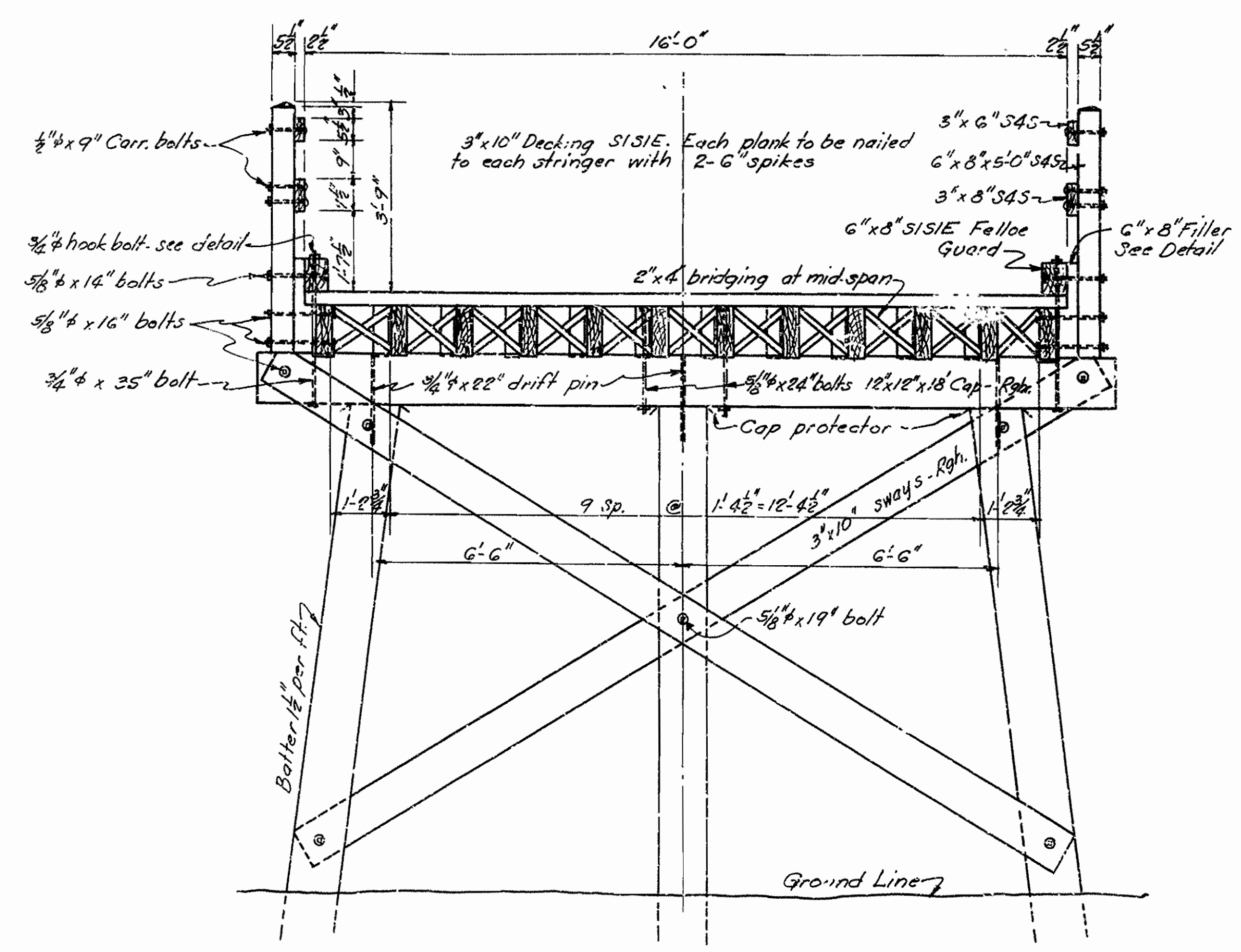
ELEVATION

Drainage Area 115 Sq. Mi.

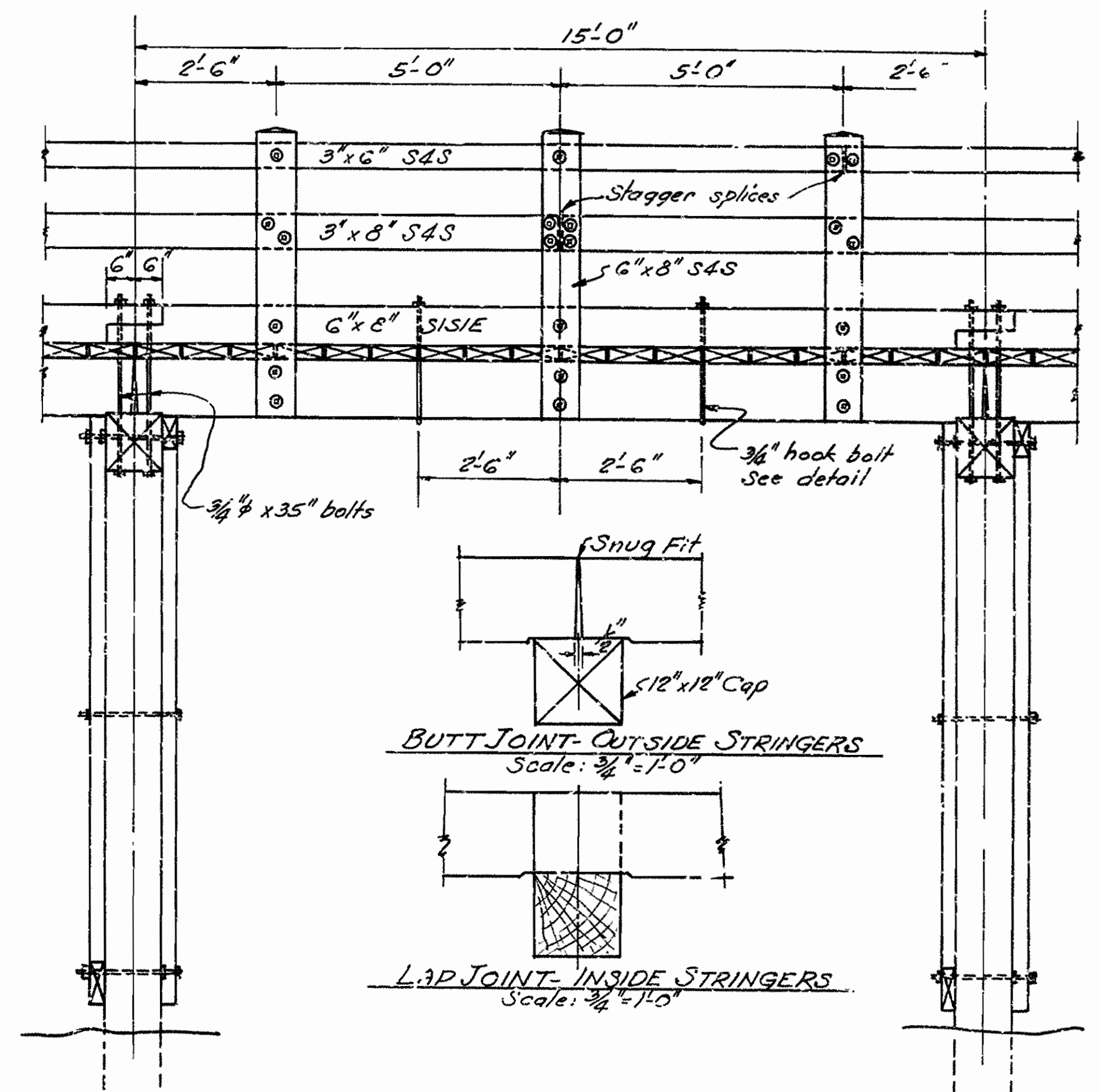
LAYOUT OF BRIDGE OVER SALADO CREEK
 LOCUST GROVE OIL TROUGH ROAD
 INDEPENDENCE CO.
 ROUTE 116 SEC. 5
ARKANSAS STATE HIGHWAY COMMISSION
 LITTLE ROCK, ARK.
 Drawn By: L.A.M.S. Date: 2-16-37
 Traced By: C.B. Date: 2-23-37
 Checked By: G. Date: _____
 Scale: 1" = 20'-0"
BRIDGE NO. 2007-B DRAWING NO. 5842

Signature: N.B. Jones
 BRIDGE ENGINEER

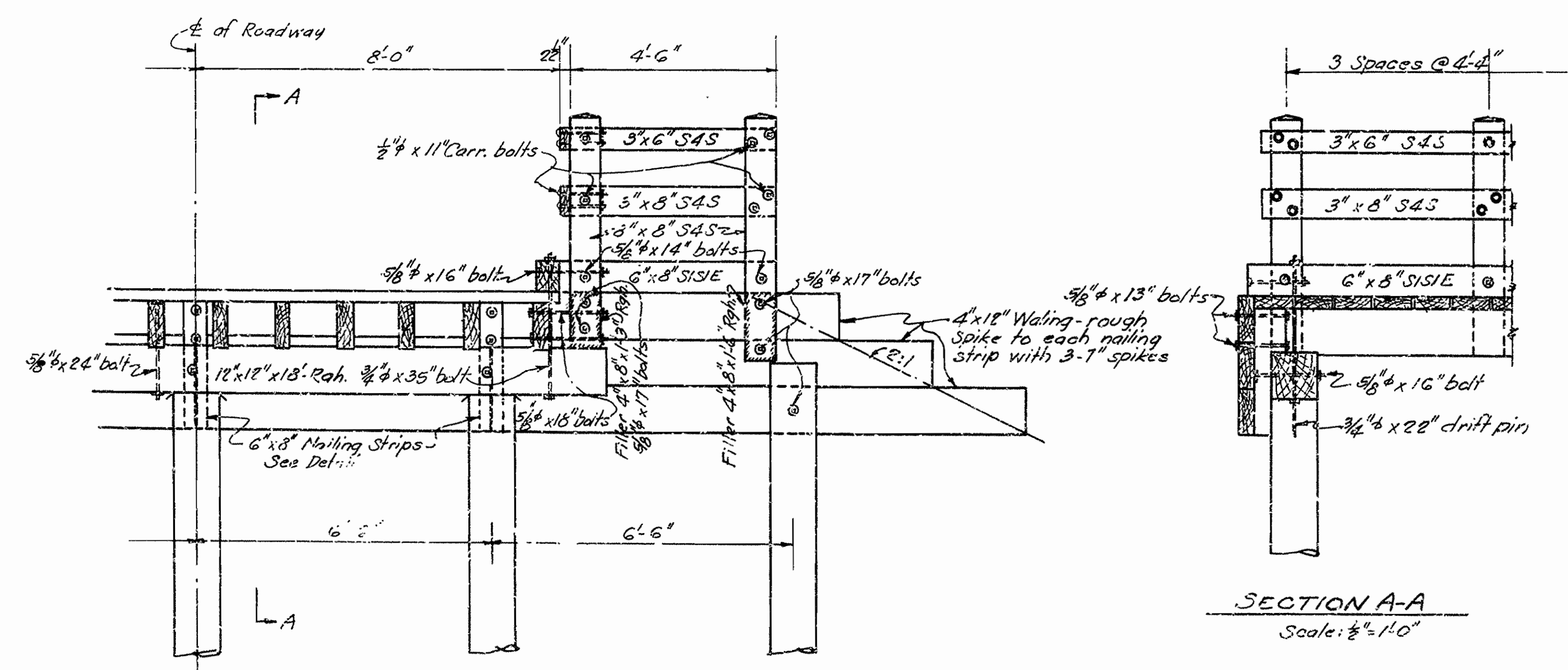
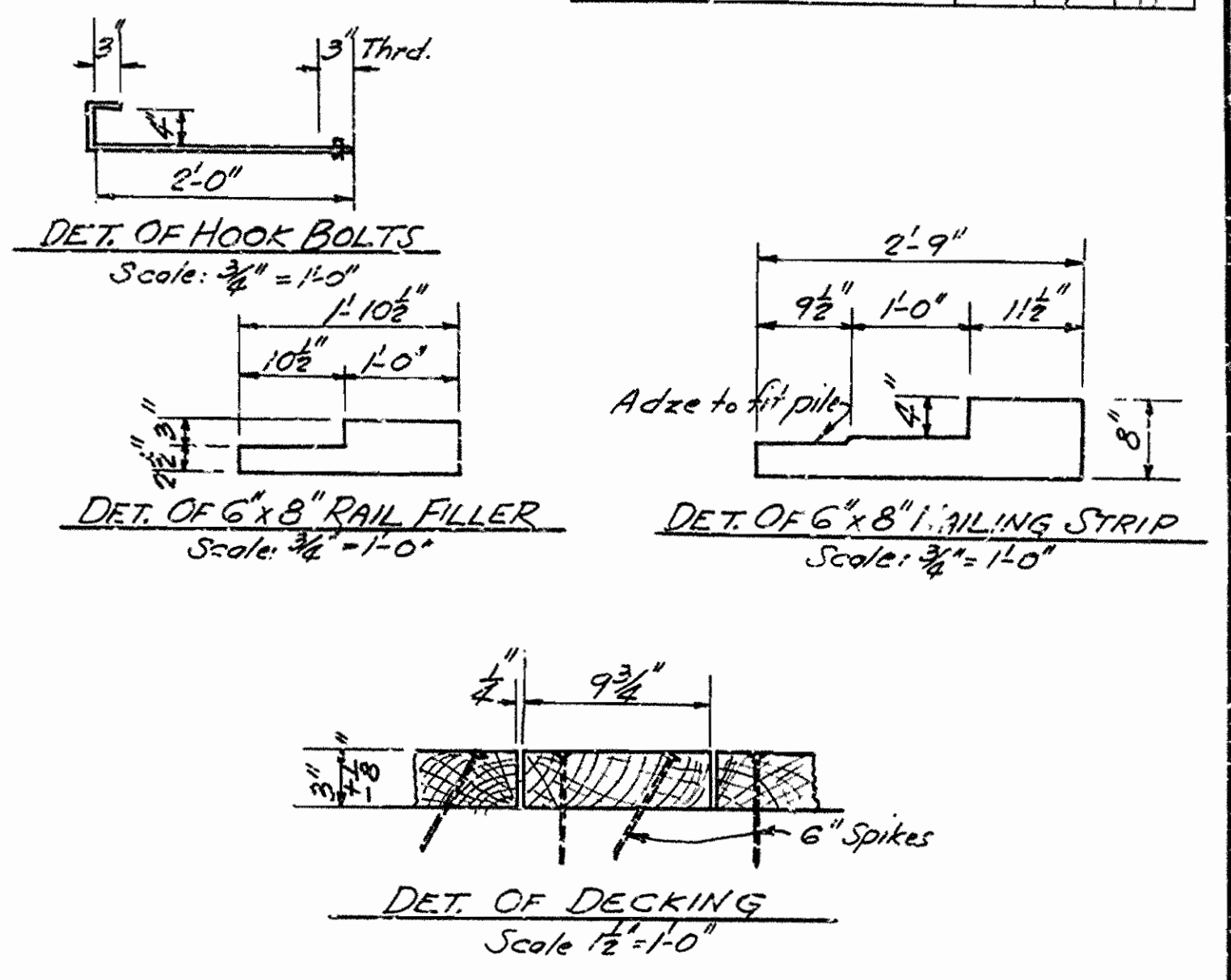
FED. ROAD DIST. NO.	STATE	PROJECT NO.	FISCAL YEAR	SHEET NO.	TOTAL SHEETS
6	ARK.			7	8
STATE JOB NO. 5199					



SECTION AT INTERMEDIATE BENT
Scale: 1/2" = 1'-0"



ELEVATION
Scale: 1/2" = 1'-0"



HALF SECTION AT END BENT
Scale: 1/2" = 1'-0"

SECTION A-A
Scale: 1/2" = 1'-0"

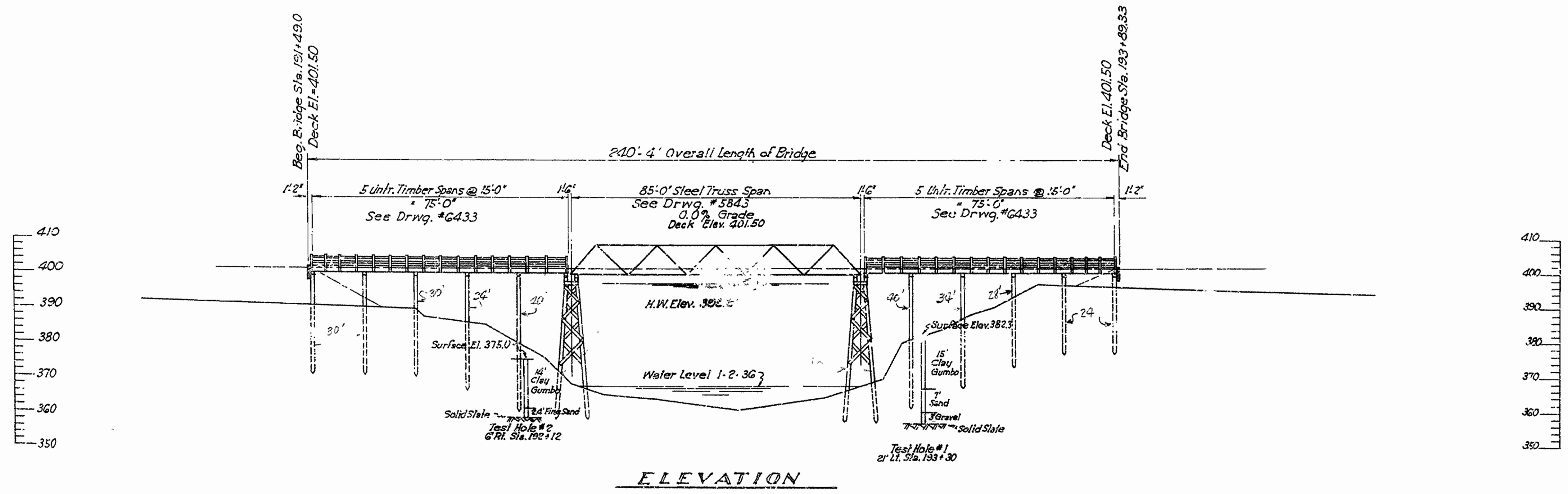
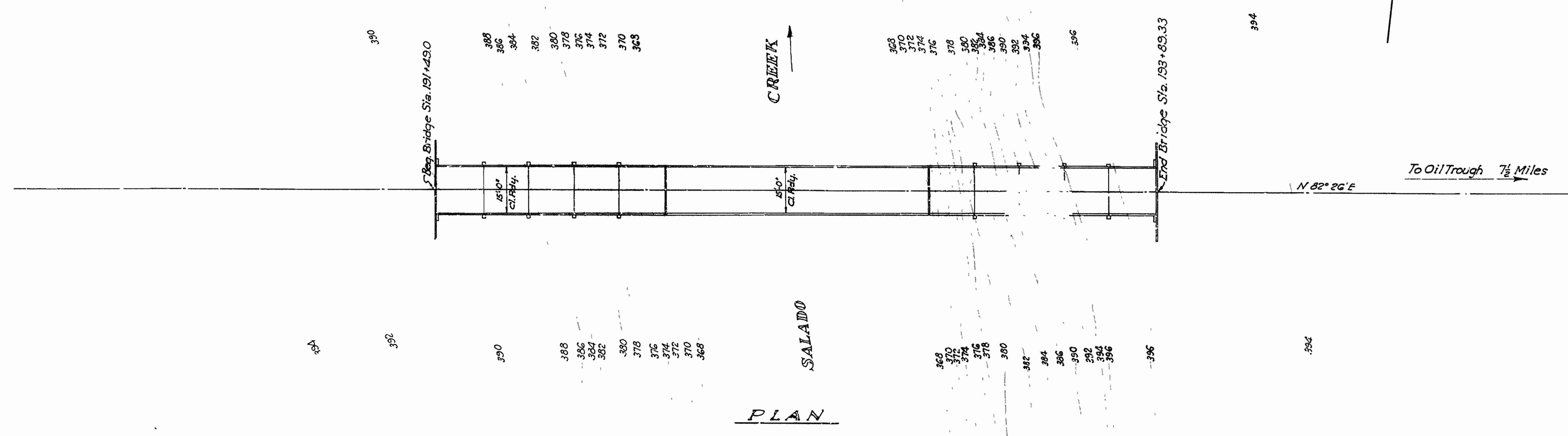
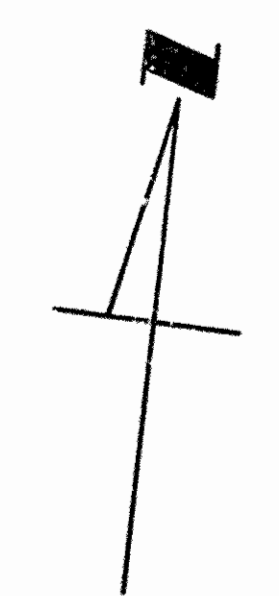
General Notes:
 Live Load: H10. Impact: none. Ft. = 1600 #/sq ft.
 All timber to be untreated oak.
 All piling to be treated.
 Stringers shall be dapped at ends and spiked to cap with 2-60d spikes in each end of stringer.
 Use cut washers under all bolt heads and nuts.

DETAILS OF 15'-0" TIMBER SPANS
 15'-0" CLEAR ROADWAY
 BRIDGE OVER SALADO CREEK
 INDEPENDENCE COUNTY
 ROUTE 14 SEC. 9

ARKANSAS STATE HIGHWAY COMMISSION
 LITTLE ROCK, ARK.
 Drawn By: L.P.C. Date: 7-10-43
 Traced By: L.P.C. Date: 2-12-43
 Checked By: _____ Date: _____
 BRIDGE NO. 2007-1 DRAWING NO. 6433

M. R. Garner
 PRINCIPAL HIGHWAY ENGINEER (BRIDGE)

FED. RD. DIST. NO.	STATE	PROJECT NO.	FISCAL YEAR	SHEET NO.	TOTAL SHEETS
6	ARK.			6	8
STATE JOB NO. 5199					



LAYOUT OF
 BRIDGE OVER SALADO CREEK
 LOCUST GROVE - OIL TROUGH ROAD
 INDEPENDENCE COUNTY
 ROUTE 14 SEC. 9

ARKANSAS STATE HIGHWAY COMMISSION
 LITTLE ROCK, ARK.
 Drawn By: E.A.W. Date: 7-8-43
 Traced By: E.A.W. Date: 7-9-43
 Checked By: _____ Date: _____
 BRIDGE NO. 2007-4 DRAWING NO. G432

N. B. Carter
 PRINCIPAL HIGHWAY ENGINEER (BRIDGE)

Scale: 1 in. = 20 ft.