

ARKANSAS DEPARTMENT OF TRANSPORTATION
CONSTRUCTION PLANS FOR STATE HIGHWAY

DATE REVISED	DATE FILMED	DATE REVISED	DATE FILMED	FED. RD. DIST. NO.	STATE	FED. AID PROJ. NO.	SHEET NO.	TOTAL SHEETS
				6	ARK.			
				JOB NO. 020581		1		31

② CANAL AT L.M. 20.98 STR. & APPRS. (S)

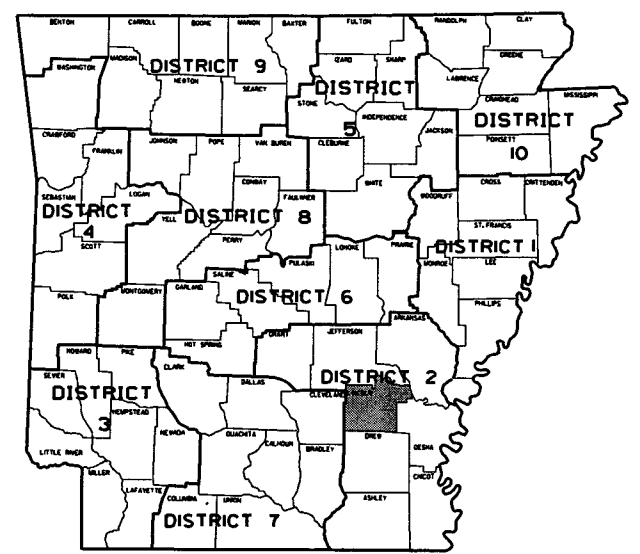
**CANAL AT L.M. 20.98
STR. & APPRS. (S)**

LINCOLN COUNTY
ROUTE II SECTION 3

FEDERAL AID PROJ. NHPP-0040(33)

JOB 020581

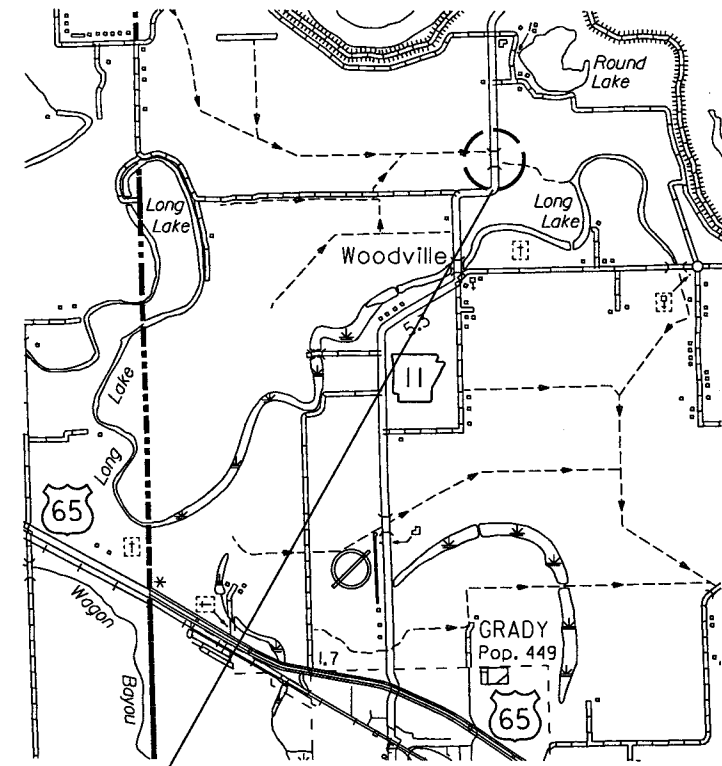
NOT TO SCALE



ARK. HWY. DIST. NO. 2

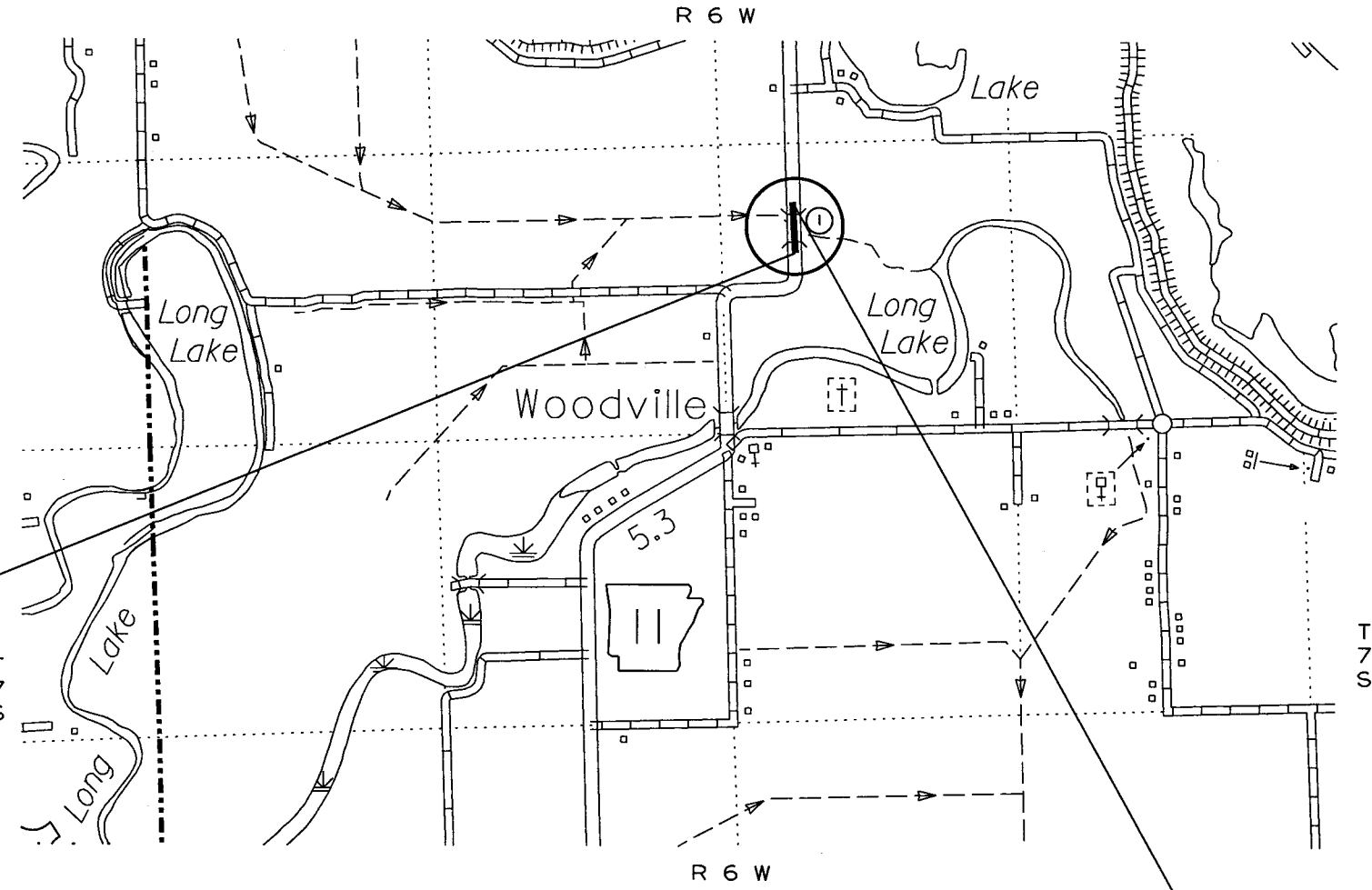
DESIGN TRAFFIC DATA

DESIGN YEAR2038
2018 ADT60
2038 ADT70
2038 DHV8
DIRECTIONAL DISTRIBUTION	...0.60
TRUCKS4%
AVERAGE RUNNING SPEED57 MPH



VICINITY MAP

PROJECT AREA



STRUCTURES OVER 20'-0" SPAN

- ① STA. 114+26 CONSTRUCT TRI. 10' x 7' x 70' R.C. BOX CULVERT ON A 45° LT. FWD. SKEW WITH 3rd WINGS LT. & RT. Q25 = 996 CFS D.A. = 7.76 SQ. MI. SPAN = 46'-4"

STA. 113+75.00
BEGIN JOB 020581
LOG MILE 21.02

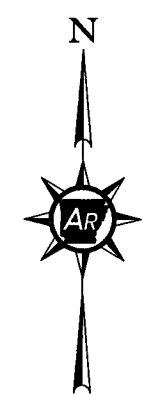
STA. 114+75.00
END JOB 020581

	BEGIN PROJECT	MID-POINT OF PROJECT	END PROJECT
LATITUDE	N 34°07'58"	N 34°08'01"	N 34°08'04"
LONGITUDE	W 91°41'14"	W 91°41'14"	W 91°41'14"

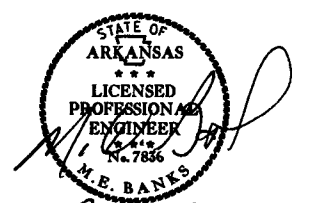
LENGTH OF PROJECT CALCULATED ALONG C.L.

	FEET	OR	MILES
GROSS LENGTH OF PROJECT	100.00		0.019
NET ROADWAY	53.67		0.010
NET BRIDGES	46.33		0.009
NET PROJECT	100.00		0.019

P.E. JOB 020581



APPROVED



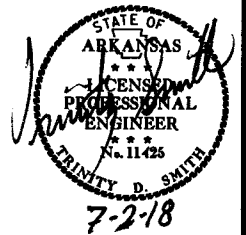
7-2-19
DEPUTY DIRECTOR
AND CHIEF ENGINEER

6/19/2018

RO20581.DGN

DATE REVISED	DATE FILMED	DATE REVISED	DATE FILMED	FED. RD. DIST. NO.	STATE	FED. AID PROJ. NO.	SHEET NO.	TOTAL SHEETS
				6	ARK.			
						JOB NO. 020581	2	31

② INDEX OF SHEETS



INDEX OF SHEETS

SHEET NO.	TITLE
1	TITLE SHEET
2	INDEX OF SHEETS AND STANDARD DRAWINGS
3	GOVERNING SPECIFICATIONS AND GENERAL NOTES
4	TYPICAL SECTIONS OF IMPROVEMENT
5 - 11	SPECIAL DETAILS
12 - 13	TEMPORARY EROSION CONTROL DETAILS
14 - 16	MAINTENANCE OF TRAFFIC DETAILS
17	PERMANENT PAVEMENT MARKING DETAILS
18 - 21	QUANTITIES
22	SUMMARY OF QUANTITIES AND REVISIONS
23 - 25	SURVEY CONTROL DETAILS
26	PLAN AND PROFILE SHEETS
27 - 31	CROSS SECTIONS

ROADWAY STANDARD DRAWINGS

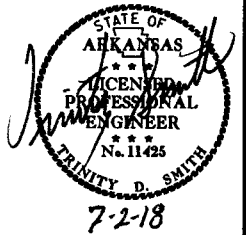
DRWG.NO.	TITLE	DATE
PBC-1	PRECAST CONCRETE BOX CULVERTS	01-28-15
PCC-1	CONCRETE PIPE CULVERT FILL HEIGHTS & BEDDING	02-27-14
PCM-1	METAL PIPE CULVERT FILL HEIGHTS & BEDDING	02-27-14
PCP-1	PLASTIC PIPE CULVERT (HIGH DENSITY POLYETHYLENE)	02-27-14
PCP-2	PLASTIC PIPE CULVERT (PVC F949)	02-27-14
PM-1	PAVEMENT MARKING DETAILS	06-01-17
PU-1	DETAILS OF PIPE UNDERDRAIN	12-08-16
RCB-1	REINFORCED CONCRETE BOX CULVERT DETAILS	07-26-12
RCB-2	EXCAVATION PAY LIMITS, BACKFILL, & SOLID SODDING FOR BOX CULVERTS	11-20-03
TC-1	STANDARD TRAFFIC CONTROLS FOR HIGHWAY CONSTRUCTION	04-03-17
TC-2	STANDARD TRAFFIC CONTROLS FOR HIGHWAY CONSTRUCTION	09-02-15
TC-3	STANDARD TRAFFIC CONTROLS FOR HIGHWAY CONSTRUCTION	09-02-15
TEC-1	TEMPORARY EROSION CONTROL DEVICES	11-16-17
TEC-2	TEMPORARY EROSION CONTROL DEVICES	06-02-94
TEC-3	TEMPORARY EROSION CONTROL DEVICES	11-03-94

6/19/2018

R020581.DGN

DATE REVISED	DATE FILMED	DATE REVISED	DATE FILMED	FED. RD. DIST. NO.	STATE	FED. AID PROJ. NO.	SHEET NO.	TOTAL SHEETS
				6	ARK.			
						JOB NO.	020581	3 31

2 GOVERNING SPECIFICATIONS & GENERAL NOTES



GOVERNING SPECIFICATIONS

ARKANSAS STATE HIGHWAY COMMISSION STANDARD SPECIFICATIONS FOR HIGHWAY CONSTRUCTION, EDITION OF 2014, AND THE FOLLOWING SPECIAL PROVISIONS AND SUPPLEMENTAL SPECIFICATIONS:

NUMBER	TITLE
ERRATA	ERRATA FOR THE BOOK OF STANDARD SPECIFICATIONS
FHWA-1273	REQUIRED CONTRACT PROVISIONS FEDERAL-AID CONSTRUCTION CONTRACTS
FHWA-1273	SUPPLEMENT - EQUAL EMPLOYMENT OPPORTUNITY - NOTICE TO CONTRACTORS
FHWA-1273	SUPPLEMENT - SPECIFIC EQUAL EMPLOYMENT OPPORTUNITY RESPONSIBILITIES (23 U.S.C. 140)
FHWA-1273	SUPPLEMENT - EQUAL EMPLOYMENT OPPORTUNITY - GOALS AND TIMETABLES
FHWA-1273	SUPPLEMENT - EQUAL EMPLOYMENT OPPORTUNITY - FEDERAL STANDARDS
FHWA-1273	SUPPLEMENT - POSTERS AND NOTICES REQUIRED FOR FEDERAL-AID PROJECTS
FHWA-1273	SUPPLEMENT - WAGE RATE DETERMINATION
100-3	CONTRACTOR'S LICENSE
100-4	DEPARTMENT NAME CHANGE
102-2	ISSUANCE OF PROPOSALS
108-1	LIQUIDATED DAMAGES
108-2	WORK ALLOWED PRIOR TO ISSUANCE OF WORK ORDER
303-1	AGGREGATE BASE COURSE
400-1	TACK COATS
400-4	DESIGN AND QUALITY CONTROL OF ASPHALT MIXTURES
410-1	CONSTRUCTION REQUIREMENTS AND ACCEPTANCE OF ASPHALT CONCRETE PLANT MIX COURSES
604-1	RETROREFLECTIVE SHEETING FOR TRAFFIC CONTROL DEVICES IN CONSTRUCTION ZONES
606-1	PIPE CULVERTS FOR SIDE DRAINS
620-1	MULCH COVER
JOB 020581	BIDDING REQUIREMENTS AND CONDITIONS
JOB 020581	BROADBAND INTERNET SERVICE FOR ASPHALT CONCRETE PLANT
JOB 020581	BROADBAND INTERNET SERVICE FOR FIELD OFFICE
JOB 020581	CARGO PREFERENCE ACT REQUIREMENTS
JOB 020581	DISADVANTAGED BUSINESS ENTERPRISE BIDDER'S RESPONSIBILITIES
JOB 020581	GOALS FOR DISADVANTAGED BUSINESS ENTERPRISE PARTICIPATION
JOB 020581	MAINTENANCE OF TRAFFIC
JOB 020581	MANDATORY ELECTRONIC CONTRACT
JOB 020581	MANDATORY ELECTRONIC DOCUMENT SUBMITTAL
JOB 020581	NESTING SITES OF MIGRATORY BIRDS
JOB 020581	PLASTIC PIPE
JOB 020581	SHORING FOR CULVERTS
JOB 020581	SOIL STABILIZATION
JOB 020581	SUBMISSION OF ASPHALT CONCRETE HOT MIX ACCEPTANCE TEST RESULTS
JOB 020581	UTILITY ADJUSTMENTS
JOB 020581	WARM MIX ASPHALT

GENERAL NOTES

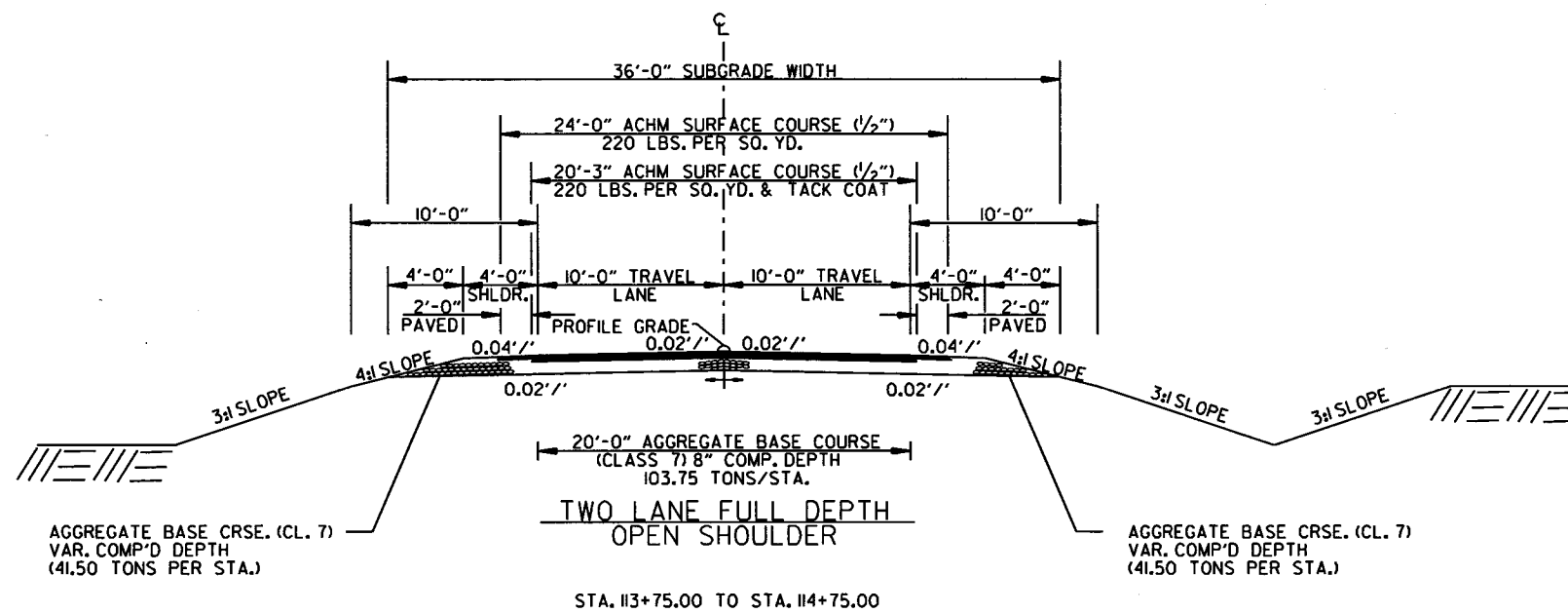
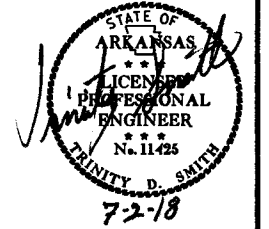
1. GRADE LINE DENOTES FINISHED GRADE WHERE SHOWN ON PLANS.
2. ALL PIPE LINES, POWER, TELEPHONE, AND TELEGRAPH LINES TO BE MOVED OR LOWERED BY THE RESPECTIVE OWNERS AS PER AGREEMENT WITH SUCH OWNERS.
3. ANY EQUIPMENT OR APPURTENANCE THAT INTERFERES WITH THE PROPOSED CONSTRUCTION AND WHICH MAY BE THE PROPERTY OF UTILITY SERVICE ORGANIZATIONS SHALL BE MOVED BY THE OWNERS UNLESS OTHERWISE PROVIDED.
4. ALL LAND MONUMENTS LOCATED WITHIN THE CONSTRUCTION AREA SHALL BE PROTECTED IN ACCORDANCE WITH SECTION 107.12 OF THE STANDARD SPECIFICATIONS.
5. ALL TREES THAT DO NOT DIRECTLY INTERFERE WITH THE PROPOSED CONSTRUCTION SHALL BE SPARED AS DIRECTED BY THE ENGINEER. CARE AND DISCRETION SHALL BE USED TO INSURE THAT ALL TREES NOT TO BE REMOVED SHALL BE HARMED AS LITTLE AS POSSIBLE DURING THE CONSTRUCTION OPERATIONS.
6. THIS PROJECT IS COVERED UNDER A SECTION 404 NATIONWIDE 14 PERMIT. REFER TO SECTION 110 OF THE STANDARD SPECIFICATIONS, EDITION OF 2014, FOR PERMIT REQUIREMENTS.
7. ALL FLEXIBLE BASE AND ASPHALTIC PAVEMENTS REMOVED SHALL BE PAID FOR UNDER THE ITEM NO. 210 - UNCLASSIFIED EXCAVATION.
8. THE EXISTING ASPHALT PAVEMENT TO BE REMOVED FROM THE REMAINING PAVEMENT SHALL BE SEPARATED BY SAWING ALONG A NEAT LINE. AFTER SAWING, THE PAVEMENT TO BE REMOVED SHALL BE CAREFULLY REMOVED IN A MANNER THAT WILL NOT DAMAGE THE PAVEMENT THAT IS TO REMAIN. ANY DAMAGE OF THE ASPHALT PAVEMENT THAT IS TO REMAIN IN PLACE SHALL BE REPAIRED AT THE CONTRACTOR'S EXPENSE.

6/19/2018

R020581.DGN

DATE REVISED	DATE FILMED	DATE REVISED	DATE FILMED	FED. RD. DIST. NO.	STATE	FED. AID PROJ. NO.	SHEET NO.	TOTAL SHEETS
				6	ARK.			
JOB NO. 020581							4	31

2 TYPICAL SECTIONS OF IMPROVEMENT



NOTES:

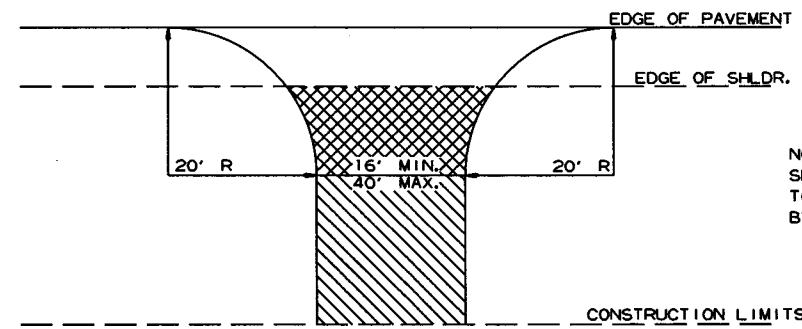
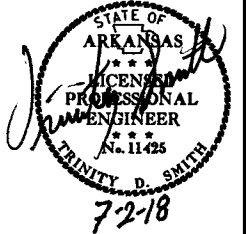
REFER TO CROSS SECTIONS FOR DEVIATION FROM THE NORMAL SLOPES. NO CHANGES SHALL BE MADE FROM THE PLANNED SLOPES WITHOUT THE APPROVAL OF THE ENGINEER.

THE THICKNESS OF AGGREGATE BASE COURSE SHALL BE WITHIN PLUS OR MINUS ONE INCH OF THE PLAN THICKNESS SHOWN. THE CONTRACTOR WILL CORRECT ANY DEFICIENT THICKNESS THAT DOES NOT MEET TOLERANCE INDICATED. PAYMENT WILL NOT BE MADE FOR MATERIAL PLACED IN EXCESS OF THE TOLERANCE INDICATED.

THE FINAL 2" OF SURFACE COURSE IS TO BE PLACED AFTER ALL OTHER COURSES HAVE BEEN LAID. LONGITUDINAL JOINTS SHALL BE AT LANE LINES.

DATE REVISED	DATE FILMED	DATE REVISED	DATE FILMED	FED. RD. DIST. NO.	STATE	FED. AID PROJ. NO.	SHEET NO.	TOTAL SHEETS
				6	ARK.			
						JOB NO. 020581	5	31

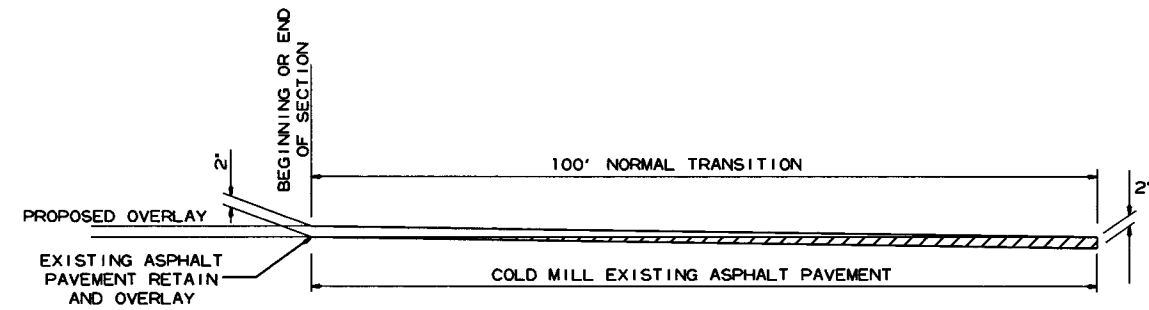
② SPECIAL DETAILS



NOTE: TURNOUTS AND PRIVATE DRIVES SHALL BE MODIFIED WHERE NECESSARY TO MEET LOCAL CONDITIONS AS DIRECTED BY THE ENGINEER.

- ASPHALT CONCRETE HOT MIX SURFACE COURSE (220 LBS. PER SQ. YD.)
AGGREGATE BASE COURSE (CLASS 7)
7" COMP. DEPTH IF ASPHALT DRIVE EXIST OR
6" CONCRETE IF CONCRETE DRIVE EXIST.
- AGGREGATE BASE COURSE (CLASS 7)
9" COMP. DEPTH OR CONFORM
TO EXISTING DRIVEWAY

DETAIL FOR DRIVEWAY TURNOUTS
(COLLECTORS)



DETAIL FOR TRANSITIONS

MID-SECTION

Table with columns for R.C. BOX SECTION (DESIGN FILL DEPTH, CLEAR SPAN, CLEAR HEIGHT, TOP SLAB THK., BOTTOM SLAB THK., SIDE WALL THK., INTERIOR WALL THK., OVER ALL WIDTH, OVER ALL HEIGHT, SECTION LENGTH), TOP SLAB REINFORCING STEEL, BOTTOM SLAB REINFORCING STEEL, SIDE WALL REINFORCING STEEL, INTERIOR WALL REINFORCING STEEL, TOP SLAB DISTRIBUTION REINFORCING STEEL, BOTTOM SLAB DISTRIBUTION REINFORCING STEEL, SIDE WALL DISTRIBUTION REINFORCING STEEL, INTERIOR WALL DISTRIBUTION REINFORCING STEEL, CLASS 'S' CONCRETE, REINFORCING STEEL (GR. 60).

Table with columns: CLASS 'S' CONCRETE (CU. YDS.), REINFORCING STEEL (GR. 60) (LBS.).

INLET SLOPE SECTION(S)

Table with columns for R.C. BOX SECTION (DESIGN FILL DEPTH, CLEAR SPAN, CLEAR HEIGHT, TOP SLAB THK., BOTTOM SLAB THK., SIDE WALL THK., INTERIOR WALL THK., OVER ALL WIDTH, OVER ALL HEIGHT, SECTION LENGTH), BOTTOM SLAB REINFORCING STEEL, SIDE WALL REINFORCING STEEL, INTERIOR WALL REINFORCING STEEL, TOP SLAB DISTRIBUTION REINFORCING STEEL, BOTTOM SLAB DISTRIBUTION REINFORCING STEEL, SIDE WALL DISTRIBUTION REINFORCING STEEL, INTERIOR WALL DISTRIBUTION REINFORCING STEEL, CLASS 'S' CONCRETE, REINFORCING STEEL (GR. 60).

Table with columns: CLASS 'S' CONCRETE (CU. YDS.), REINFORCING STEEL (GR. 60) (LBS.).

Table with columns: Design Fill Depth, Range of Actual Fill Depth.

Data shown for Mid-Section, Slope Section(s), and Skewed End Section is based on the design fill depth shown in the table, see PLAN AND PROFILE SHEETS for actual fill depth.

INLET SKEWED END SECTION

Table with columns for SKEW (DEGREE), SLOPE, DESIGN FILL DEPTH, CLEAR SPAN, CLEAR HEIGHT, SECTION LENGTH, TOP SLAB THK., HDWL DEPTH, BOTTOM SLAB THK., SIDE WALL THK., INTERIOR WALL THK., OVER ALL WIDTH, OVER ALL HEIGHT, TOP SLAB REINFORCING STEEL, BOTTOM SLAB REINFORCING STEEL, SIDE WALL REINFORCING STEEL, INTERIOR WALL REINFORCING STEEL, TOP SLAB DISTRIBUTION REINFORCING STEEL, BOTTOM SLAB DISTRIBUTION REINFORCING STEEL, SIDE WALL DISTRIBUTION REINFORCING STEEL, INTERIOR WALL DISTRIBUTION REINFORCING STEEL, CLASS 'S' CONCRETE, REINFORCING STEEL (GR. 60).

Table with columns: CLASS 'S' CONCRETE (CU. YDS.), REINFORCING STEEL (GR. 60) (LBS.).

Any Bar Lap Required for the Skewed End Section shall be considered subsidiary to the item "Reinforcing Steel - Roadway (Gr. 60)."

INLET WINGWALL TABLE

Table with columns for OVER ALL WIDTH, CLEAR HEIGHT, FOOTING THK., WING WALL THK., BOX SKEW (DEG.), SLOPE, HDWL LENGTH, HEEL, WALL HEIGHT (AT HDWL, AT WING END), WINGWALL ANGLE (DEGREE), WIDTH OF WING FOOTINGS AT HDWL, FOOTING DIMENSION PARALLEL WITH HDWL, LENGTH OF WINGWALLS, LENGTH OF FOOTING HEEL, CLASS 'S' CONCRETE, REINFORCING STEEL.

MID-SECTION BAR LAP TABLE

Table with columns: # of Long Laps Req'd., SL = Section Length.

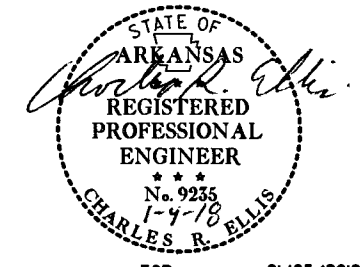
Table with columns: Min. Bar Lap Length, #, Length.

Table with columns: Bar Pin Dia. Table, #, Dia.

This drawing to be used in conjunction with SHEET 1 OF 4, "GENERAL DETAILS OF R.C. BOX CULVERT", "GENERAL NOTES & LONGITUDINAL SECTION LENGTH SCHEDULE", SHEET 3 OF 4, "GENERAL DETAILS OF R.C. BOX CULVERT", "DETAILS OF MULTI-BARREL R.C. BOX CULVERT", SHEET 4 OF 4, "GENERAL DETAILS OF R.C. BOX CULVERT", "DETAILS OF WINGWALLS", and STANDARD DRAWING RCB-2.

For additional information and outlet sections, see Sheet 2 of 2.

Table with columns: DATE REVISED, DATE FILMED, DATE REVISED, DATE FILMED, FED. PROJ. NO., STATE, FED. AID PROJ. NO., SHEET NO., TOTAL SHEETS.



TABULAR DATA BY: EOR DATE: 01/05/2018 CHECKED BY: LWAC DATE: 1/15/17

SHEET 1 OF 2 DETAILS OF R.C. BOX CULVERT TRIPLE BARREL BOX CULVERT Sta. 114+26 SPECIAL DETAILS

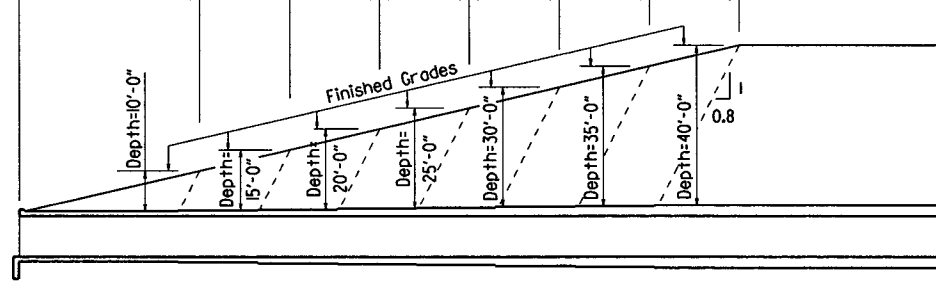


DATE REVISED	DATE FILED	DATE REVISED	DATE FILED	FED. ROAD DIST. NO.	STATE	FED. AID PROJ. NO.	SHEET NO.	TOTAL SHEETS
				6	ARK.		8	31
				JOB NO.	020581		SPECIAL DETAILS	

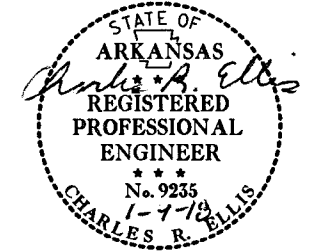
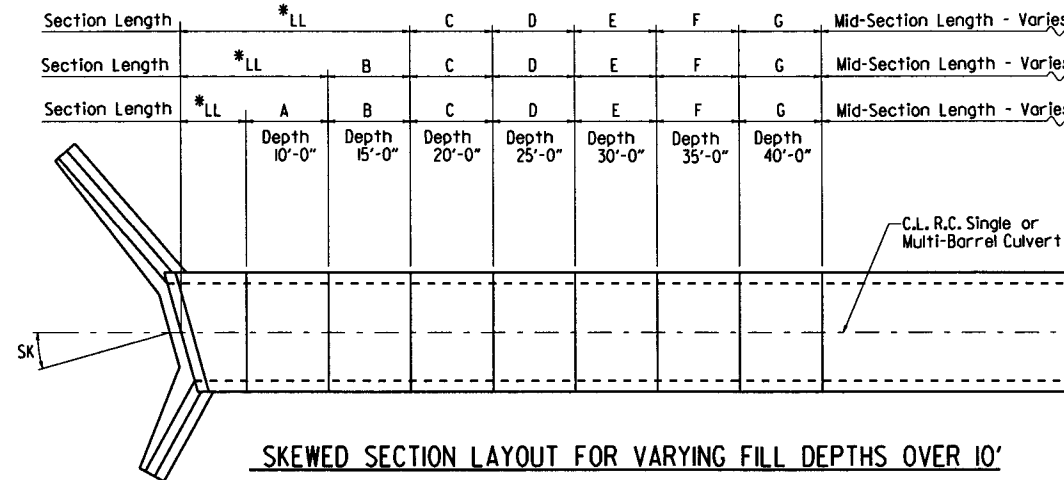
2:1 Slope	20'-0"	10'-0"	10'-0"	10'-0"	10'-0"	10'-0"	10'-0"
3:1 Slope	30'-0"	15'-0"	15'-0"	15'-0"	15'-0"	15'-0"	15'-0"
4:1 Slope	40'-0"	20'-0"	20'-0"	20'-0"	20'-0"	20'-0"	20'-0"

Note: For fill depths 10' and under, use Mid-Section full length of box culvert.

* LL = Skewed End Section Length - See "Skewed End Section Details" Length LL varies with skew angle, overall box width and fill depth and may eliminate the need for some slope section lengths as shown.



Slope Section Length @ 2:1 Slope	A=12'-0"	B=6'-0"	C=6'-0"	D=6'-0"	E=6'-0"	F=6'-0"	G=6'-0"	Mid-Section Length - Varies
Slope Section Length @ 3:1 Slope	A=22'-0"	B=11'-0"	C=11'-0"	D=11'-0"	E=11'-0"	F=11'-0"	G=11'-0"	Mid-Section Length - Varies
Slope Section Length @ 4:1 Slope	A=32'-0"	B=16'-0"	C=16'-0"	D=16'-0"	E=16'-0"	F=16'-0"	G=16'-0"	Mid-Section Length - Varies



LONGITUDINAL SECTION LENGTH SCHEDULE FOR VARYING FILL DEPTHS OVER 10'

Lengths for Non-Skewed Boxes

SKewed SECTION LAYOUT FOR VARYING FILL DEPTHS OVER 10'

GENERAL NOTES:

CONSTRUCTION SPECIFICATIONS: Arkansas State Highway and Transportation Department Standard Specifications for Highway Construction (2014 edition) with applicable Supplemental Specifications and Special Provisions. Section and Subsection refer to the Standard Construction Specifications unless otherwise noted in the Plans.

DESIGN SPECIFICATIONS: AASHTO LRFD Bridge Design Specifications, Fifth Edition (2010) with 2010 interim revisions.

LIVE LOADING: HL-93

All concrete shall be Class 5 with a minimum 28-day compressive strength of 3,500 psi and shall be poured in the dry. All exposed corners to have 3/8" chamfers.

Reinforcing Steel shall be Grade 60 (yield strength = 60,000 psi) conforming to AASHTO M31 or M322, Type A, with mill test reports.

Reinforcing Steel Tolerances: The tolerances for reinforcing steel shall meet those listed in 'Manual of Standard Practice' published by Concrete Reinforcing Steel Institute (CRSI) except that the tolerance for truss bars such as Figure 3 on page 7-4 of the CRSI Manual shall be minus zero to plus 1/2 inch.

Excavation and backfilling shall be in accordance with the requirements of Section 801.

Membrane Waterproofing shall conform to the requirements of Section 815. Membrane Waterproofing shall be Type C and as directed by the Engineer applied to all construction joints in the top slab and the sidewalls of R.C. Box culverts and to the construction joint between wingwalls and R.C. Box culvert walls.

Weep Holes in box culvert walls shall have a maximum horizontal spacing of 10'-0" and shall be spaced to clear all reinforcing steel. The drain opening shall be 4" diameter and shall be placed 12" above the top of the bottom slab.

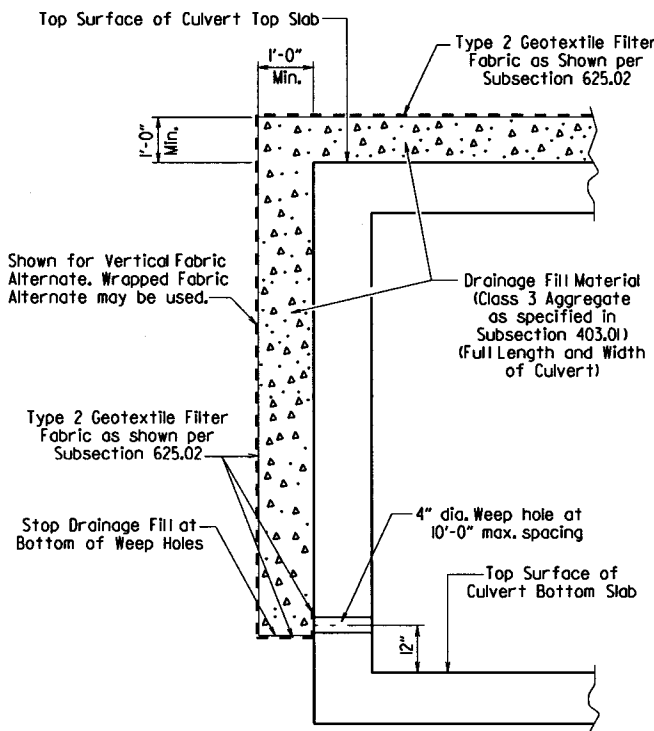
Weep Holes in wingwalls shall have a maximum horizontal spacing of 10'-0" and shall be spaced to clear all reinforcing steel. There shall be a minimum of two (2) weep holes in each wingwall. The drain opening shall be 4" diameter and shall be placed 12" above the top of the wingwall footing.

The barrel components of the culvert may be constructed using continuous pours. For longer culvert construction, the Contractor may use multiple pours with transverse construction joints spaced a minimum of 50 feet apart unless superseded by stage construction or site constraints as approved by the Engineer. Construction joints between footings and walls shall be made only where shown in the Plans. Joints shall be normal to the centerline of barrel and shall be keyed. Longitudinal reinforcing shall be continuous through joints unless shown otherwise. All longitudinal construction joints shall be submitted to the Engineer for approval.

Membrane Waterproofing, Weep Holes, Geotextile Filter Fabric, and Drainage Fill Material will not be paid for directly but shall be considered subsidiary to Class 5 Concrete.

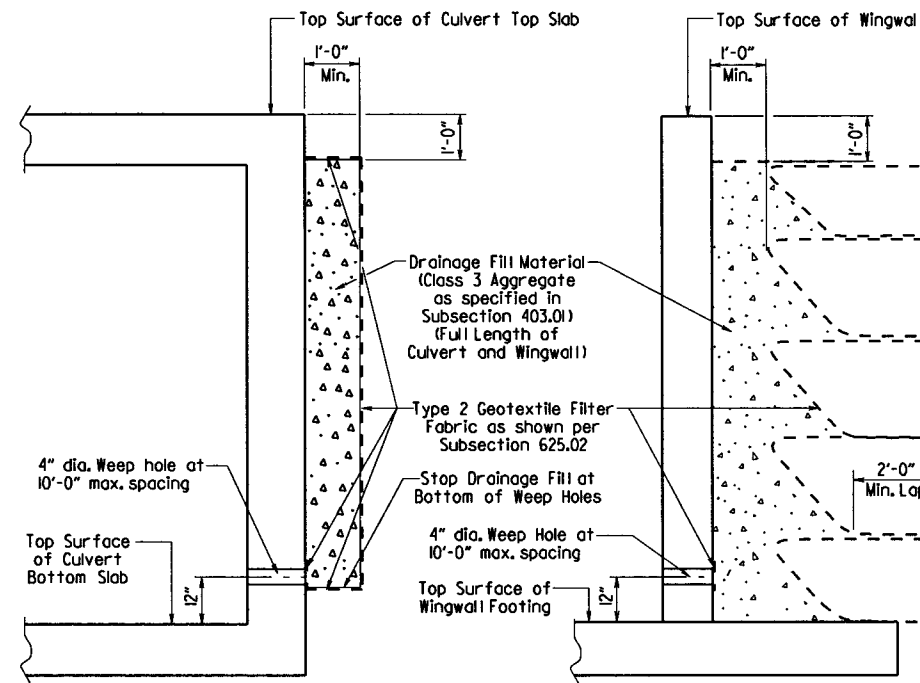
When the top slab of the box culvert serves as finished roadway surface, curing and finishing shall be in accordance with subsections 802.17 and 802.20 for bridge roadway surface and a trowel finish shall be applied in accordance with subsection 802.19 for Class 5 Tined Bridge Roadway Surface Finish. Curing and finishing shall not be paid for directly, but shall be considered incidental to the item "Class 5 Concrete-Roadway". Class 1 Protective Surface Treatment shall be applied to the roadway surface and this work shall be paid for under the unit price bid for "Class 1 Protective Surface Treatment".

When precast reinforced concrete box culverts are substituted for cast in place box culverts, they shall be manufactured according to ASTM C 1577 and meet the requirements of Section 607. When the top slab of the box culvert serves as the finished roadway surface, a precast reinforced concrete box culvert substitution is not allowed.



CULVERT DRAINAGE DETAIL FOR ROCK FILL

This detail shall be used when rock fill is specified for embankment construction.



VERTICAL FABRIC ALTERNATE

(Shown for Culvert, Similar for Wingwall)

WRAPPED FABRIC ALTERNATE

(Shown for Wingwall, Similar for Culvert)

For Details of Excavation and Pay Limits, see Standard Drawing RCB-2.

WINGWALL & CULVERT DRAINAGE DETAIL

SHEET 1 OF 4
GENERAL DETAILS OF R.C. BOX CULVERT
GENERAL NOTES &
LONGITUDINAL SECTION LENGTH SCHEDULE
SPECIAL DETAILS

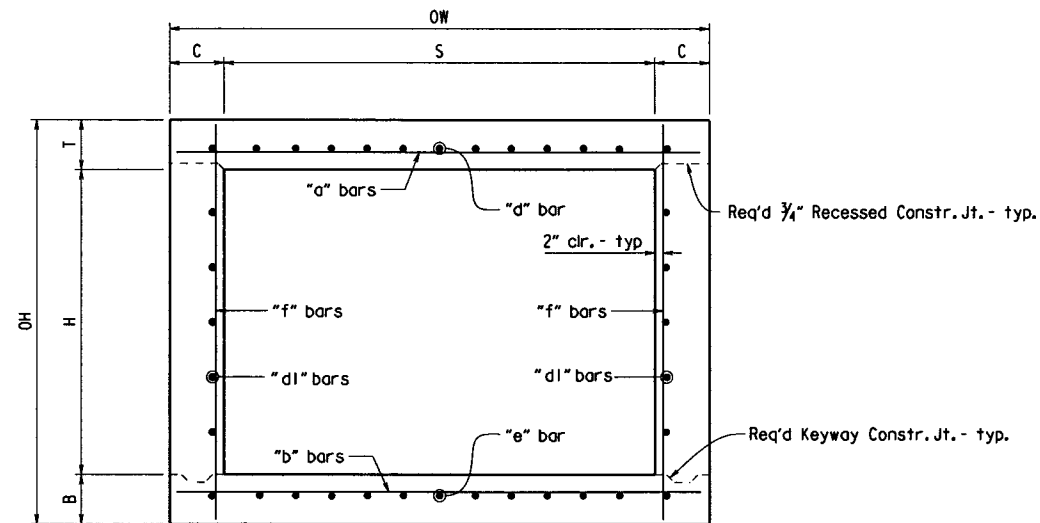


DATE REVISED	DATE FILMED	DATE REVISED	DATE FILMED	FED. ROAD DIST. NO.	STATE	FED. AID PROJ. NO.	SHEET NO.	TOTAL SHEETS
				6	ARK.			
				JOB NO.	020581	9	31	

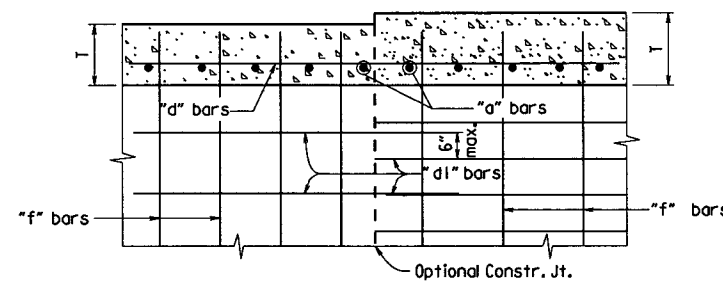
① SPECIAL DETAILS



Note: When top slab of culvert serves as finished roadway surface, see General Notes on Sheet 1 of 4.

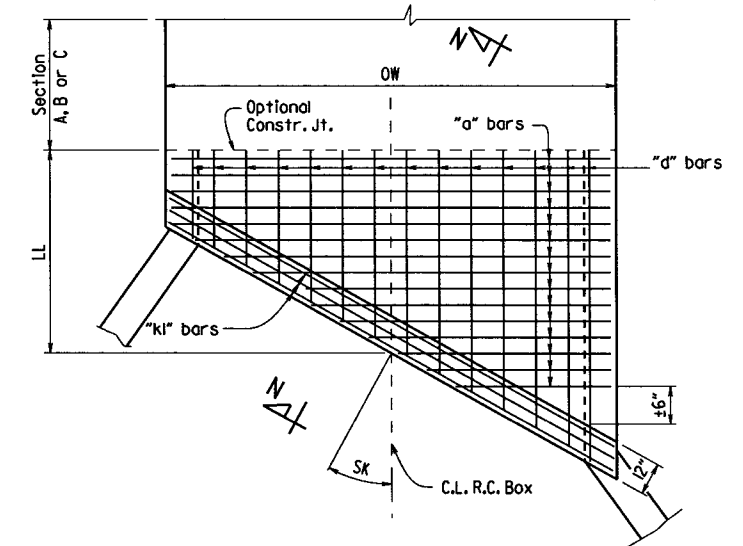


TYPICAL SECTION M-M

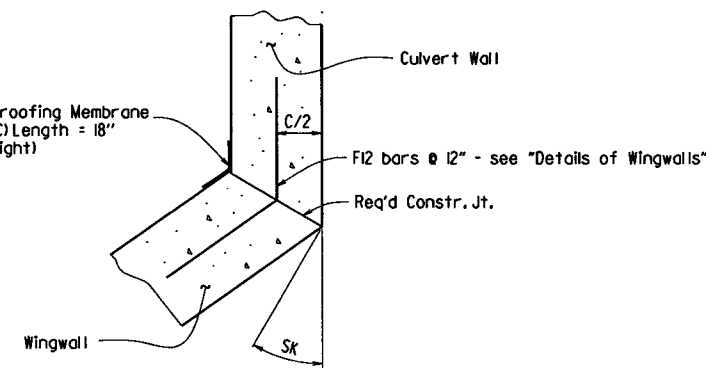


LONGITUDINAL LAP DETAIL AT CHANGE IN SECTIONS

TOP SLAB SHOWN, BOTTOM SLAB SIMILAR

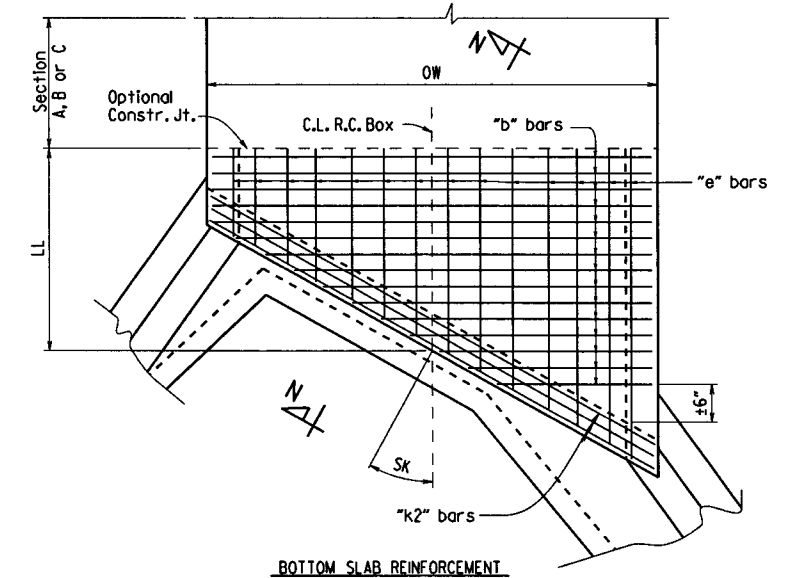


TOP SLAB REINFORCEMENT



WINGWALL ATTACHMENT

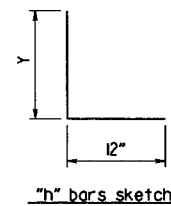
See "Details of Wingwalls" for additional information and wingwall details.



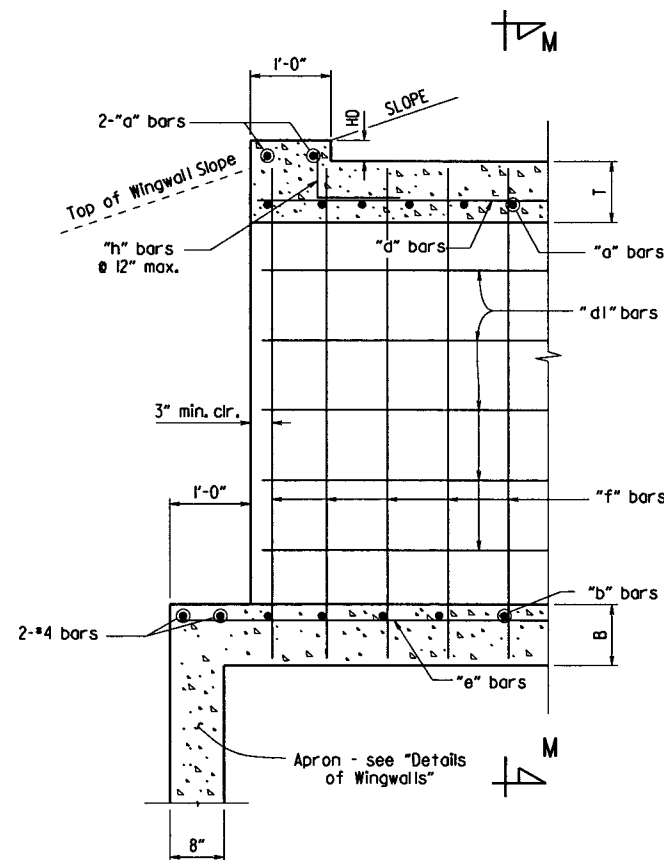
SKewed END SECTION DETAILS

SHEET 2 OF 4
GENERAL DETAILS OF R.C. BOX CULVERT
DETAILS OF SINGLE BARREL
R.C. BOX CULVERT

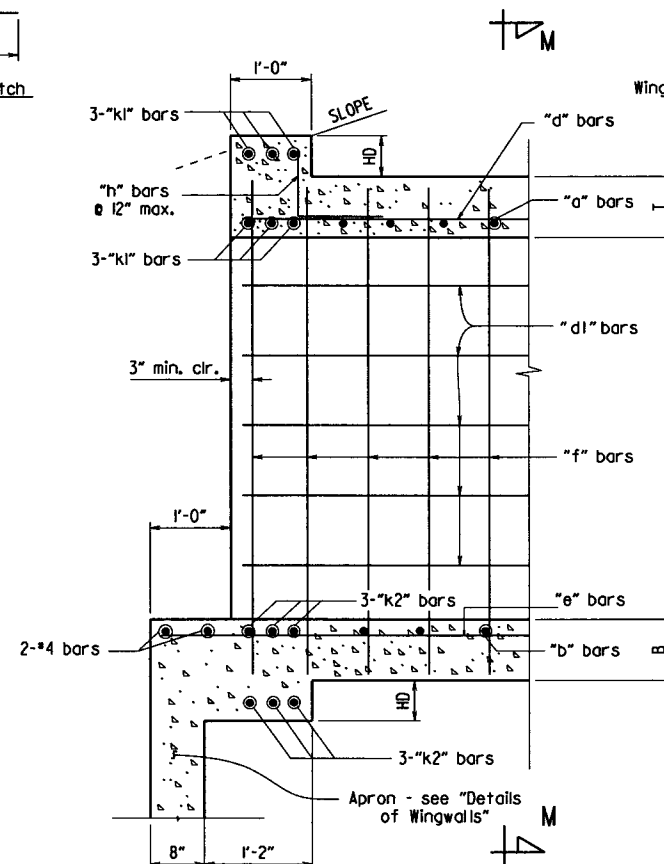
SPECIAL DETAILS



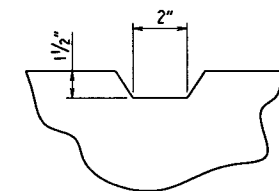
"h" bars sketch



PART LONGITUDINAL SECTION
(Non-Skewed Ends)



PART LONGITUDINAL SECTION N-N
(Skewed Ends)



TYPICAL KEYWAY DETAIL
(All Construction Joints)