

FED. ROAD DIST. NO.	STATE	PROJECT NO.	FISCAL YEAR	SHEET NO.	TOTAL SHEETS
6	ARK.			1	16
STATE JOB NO. 11321					

STATE OF ARKANSAS  
STATE HIGHWAY COMMISSION

INDEX OF SHEETS

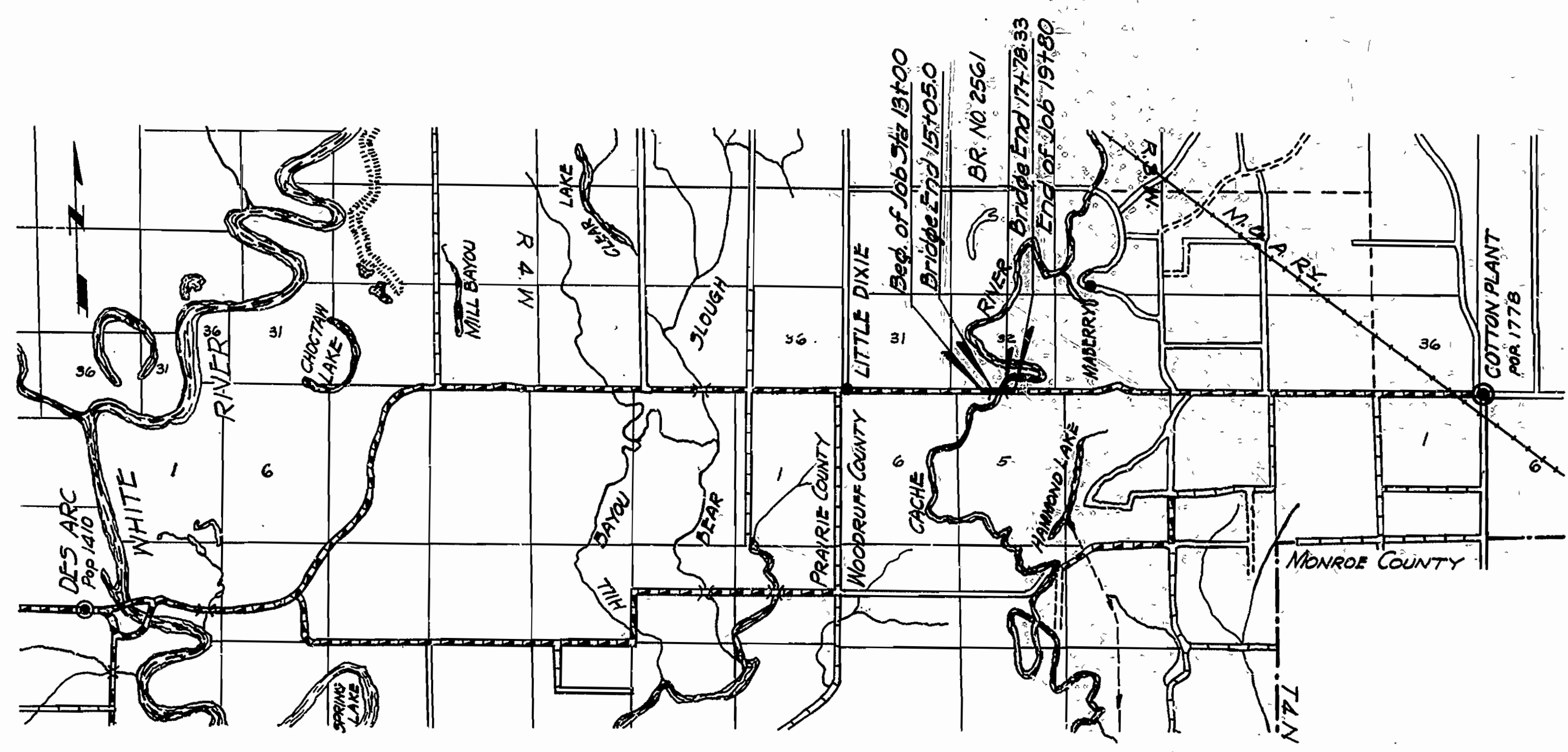
Sheet No	Drwg. No.	Title
1	7338	Title Sheet Job 11321
2	7339	Plan and Profile and Quantity Sheet
3	7340	Layout of Bridge Over Cache River
4	7341	Details of Bents
5	7342	Details of Spans
6	1888	Embankment at Bridge Ends
7	1891	Basis for Computing Excavation for Structures
8	1896	Standard Barricade Warning and Signs
9	F.P.M-2	Right of Way Markers
10-16		Details of Truss Spans as Originally Fabricated

SPECIFICATIONS: ARKANSAS STATE HIGHWAY COMMISSION  
STANDARD SPECIFICATIONS FOR ROAD AND BRIDGE CONSTRUCTION  
ADOPTED MARCH 1, 1940 WITH THE SPECIAL PROVISIONS LISTED BELOW

PAMPHLETS	
DIVISION	PART
I	
II	1, 4, 8A, 8B, 8C
III	
IV	

**PLAN OF PROPOSED BRIDGE**  
**OVER CACHE RIVER**  
**DES ARC - COTTON PLANT ROAD**  
**WOODRUFF COUNTY**  
**ROUTE 38 SEC. 2**  
**JOB NO 11321**

No.	SPECIAL PROVISIONS TITLE	No. SHEETS
2-1	Revision of Article 2.11	2
2-2	Equipment List Required	1
2-4	State License for Contractors	1
4-1	Revision of Article 4.9	1
9-5	Partial Payments	1
803-1	Revision of Article 803.21	1
850-1	Engineers Field Office	1
853-1	Machine Mixing	1
9.P	Revision of Article 807.50	1
9.P	Removal of Existing Bridge And Maintaining Traffic	1
9.P	Right of Way Markers	1
*8-2	Employment of Labor	1



**LAYOUT**  
Scale: 1" = 1/4 Mile

LENGTH OF PROJECT = 680 Feet = 0.128 Mile  
 LENGTH OF BRIDGES = 273.33 " = 0.051 "  
 LENGTH OF EMBANKMENT = 406.67 " = 0.077 "  
 LENGTH OF JOB =

APPROVED

CHIEF ENGINEER - STATE HIGHWAY COMMISSION

APPROVED

CHAIRMAN - STATE HIGHWAY COMMISSION

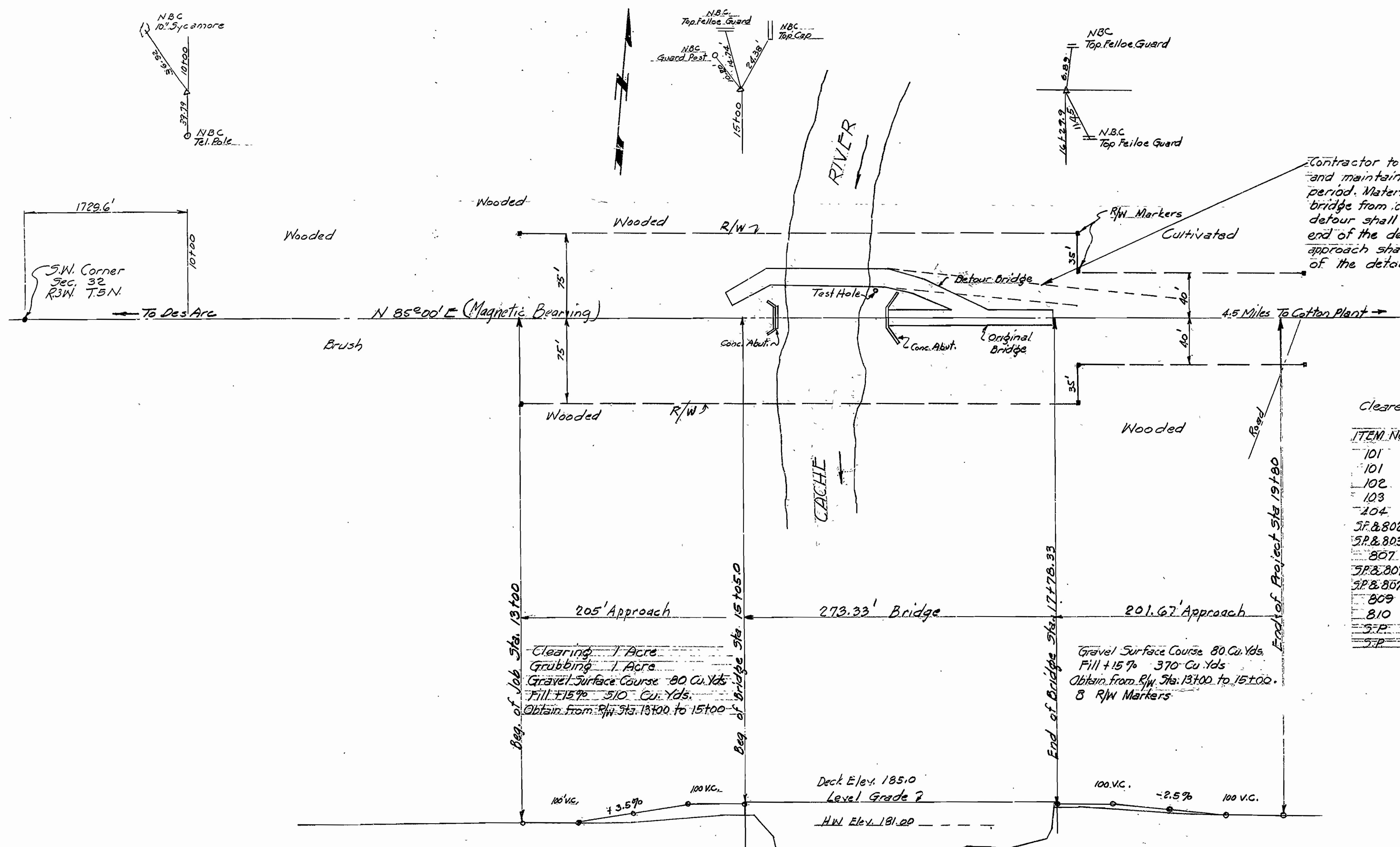
RECOMMENDED FOR APPROVAL

DISTRICT ENGINEER  
PUBLIC ROADS ADMINISTRATION  
FEDERAL WORKS AGENCY

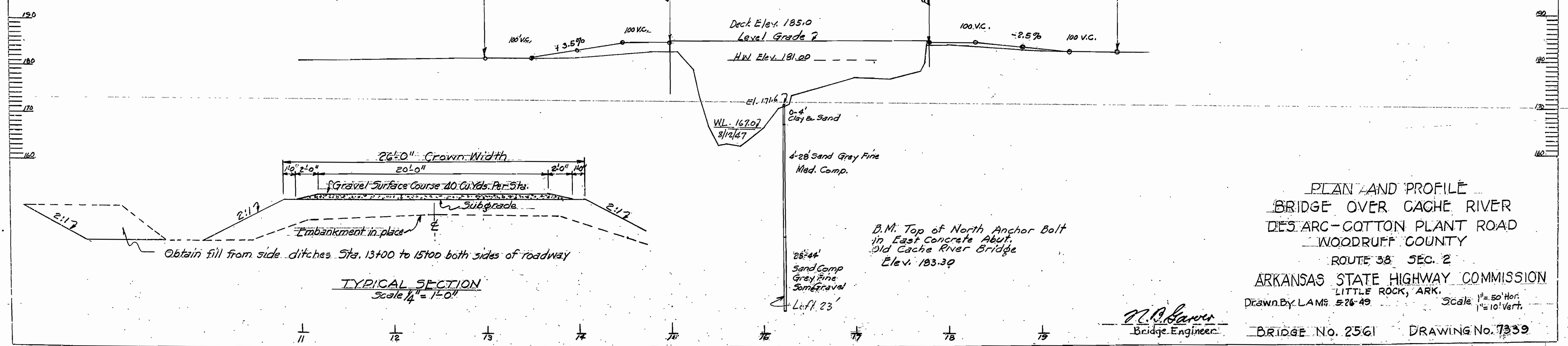
APPROVED

COMMISSIONER  
PUBLIC ROADS ADMINISTRATION  
FEDERAL WORKS AGENCY

*H. O. Garver*  
PRINCIPAL HIGHWAY ENGINEER (BRIDGE)



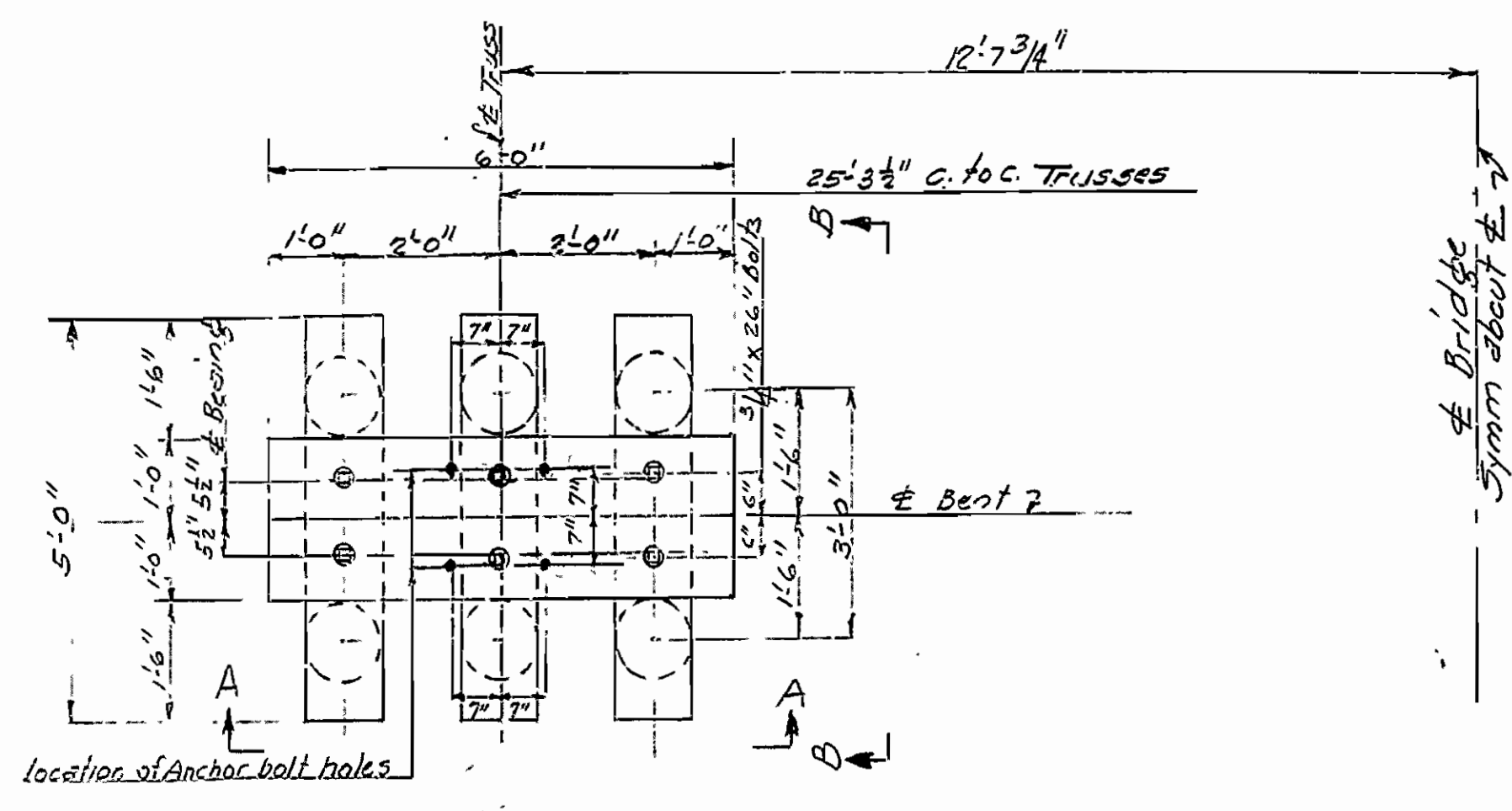
ITEM NO.	QUANTITIES ITEM	QUANT. UNIT
101	Clearing	1 Acre
101	Grubbing	1 Acre
102	Common Excavation	880 Cu.Yds.
103	Dry Excavation for Structures	25 Cu.Yds.
104	Gravel Surface Course (Class 5) (2, 3, 4, 5 or 6)	160 Cu.Yds.
5F & 802	Class 5 Concrete for Bridges	126 Cu.Yds.
5R & 803	Reinforcing Steel	30,600 Lbs.
807	Structural Steel in Truss Spans	37,950 Lb.
5R & 807	Fabrication of Structural Steel furnished by the State	64,560 Lb.
5R & 807	Erection of " " " " " "	194,430 Lb.
809	Treated Bridge Timber	4,068 MFBM
810	Treated Timber Piling	1,380 Lin.Ft.
5P	Right of Way Markers	8 Each
5P	Removal of Existing Bridge and Maintaining Traffic	100.75 Comp Item



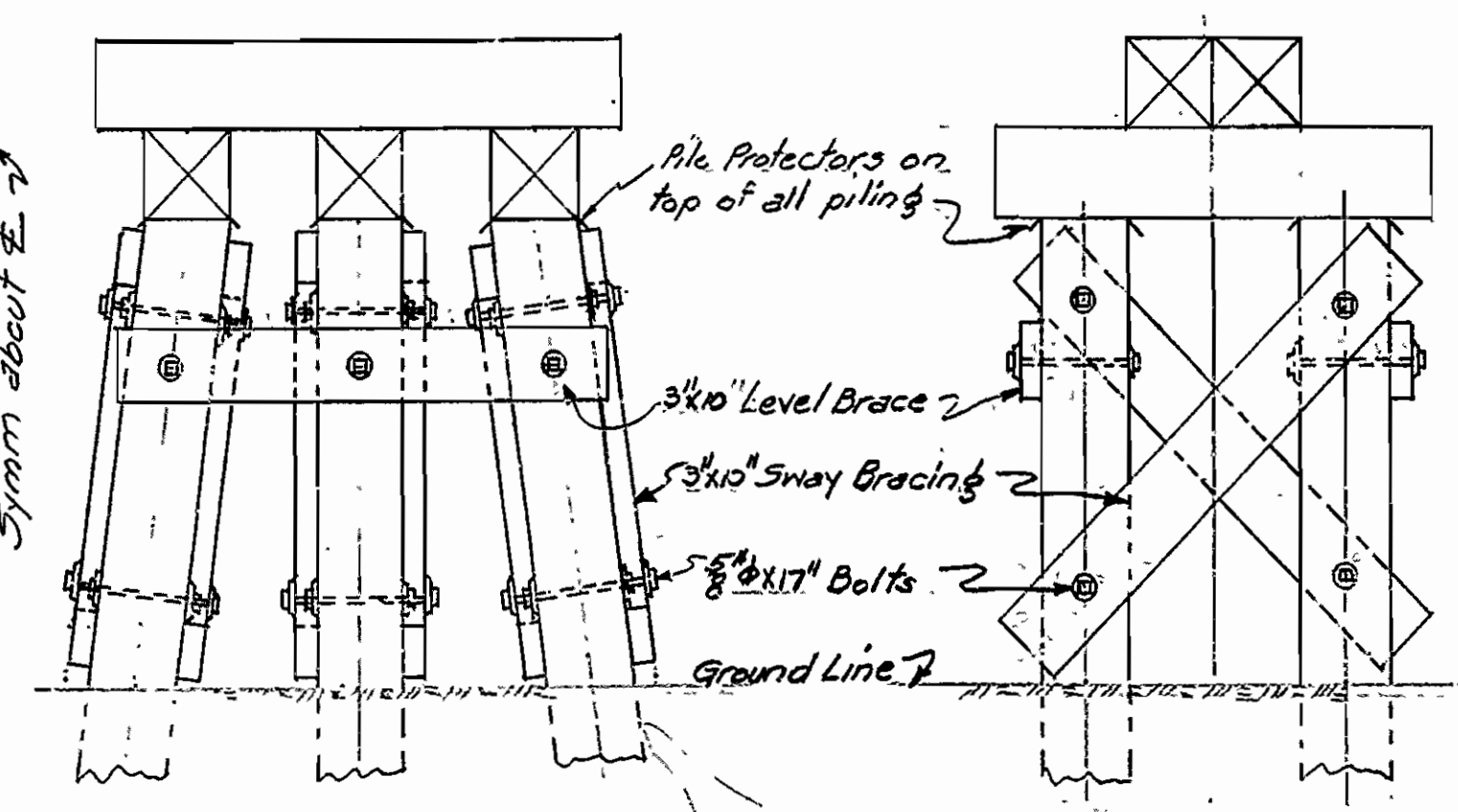
PLAN AND PROFILE  
 BRIDGE OVER CACHE RIVER  
 DES ARC - COTTON PLANT ROAD  
 WOODRUFF COUNTY  
 ROUTE 38 SEC. 2  
 ARKANSAS STATE HIGHWAY COMMISSION  
 LITTLE ROCK, ARK.  
 Drawn By L.A.M. 5-26-49 Scale 1" = 50' Hor. 1" = 10' Vert.  
 Bridge Engineer  
 BRIDGE No. 2561 DRAWING No. 7339



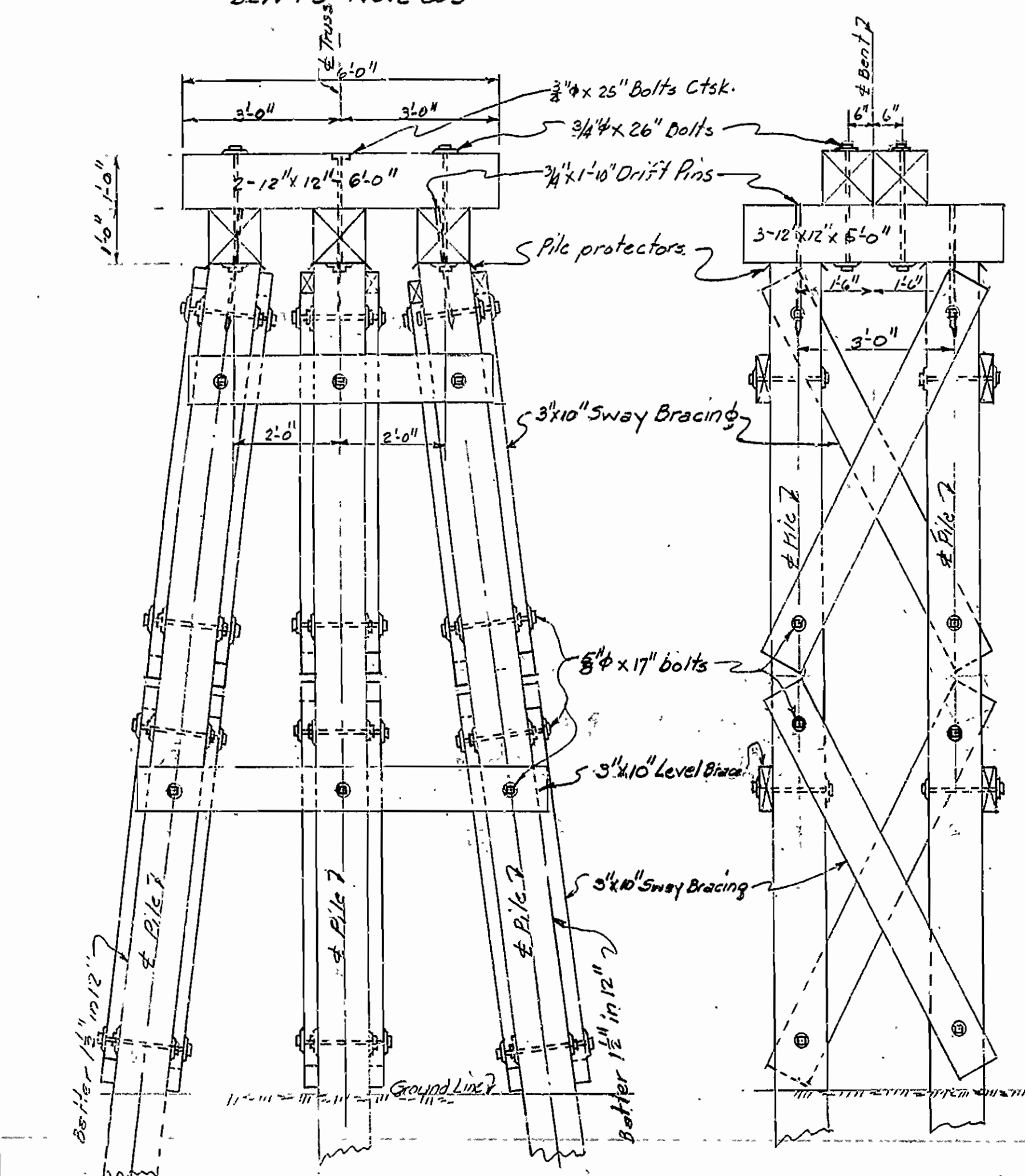
110 4210	STATE	PROJECT NO.	CYCL. YEAR	SHEET
6	ARK.			4
STATE JOB NO. 11321				16



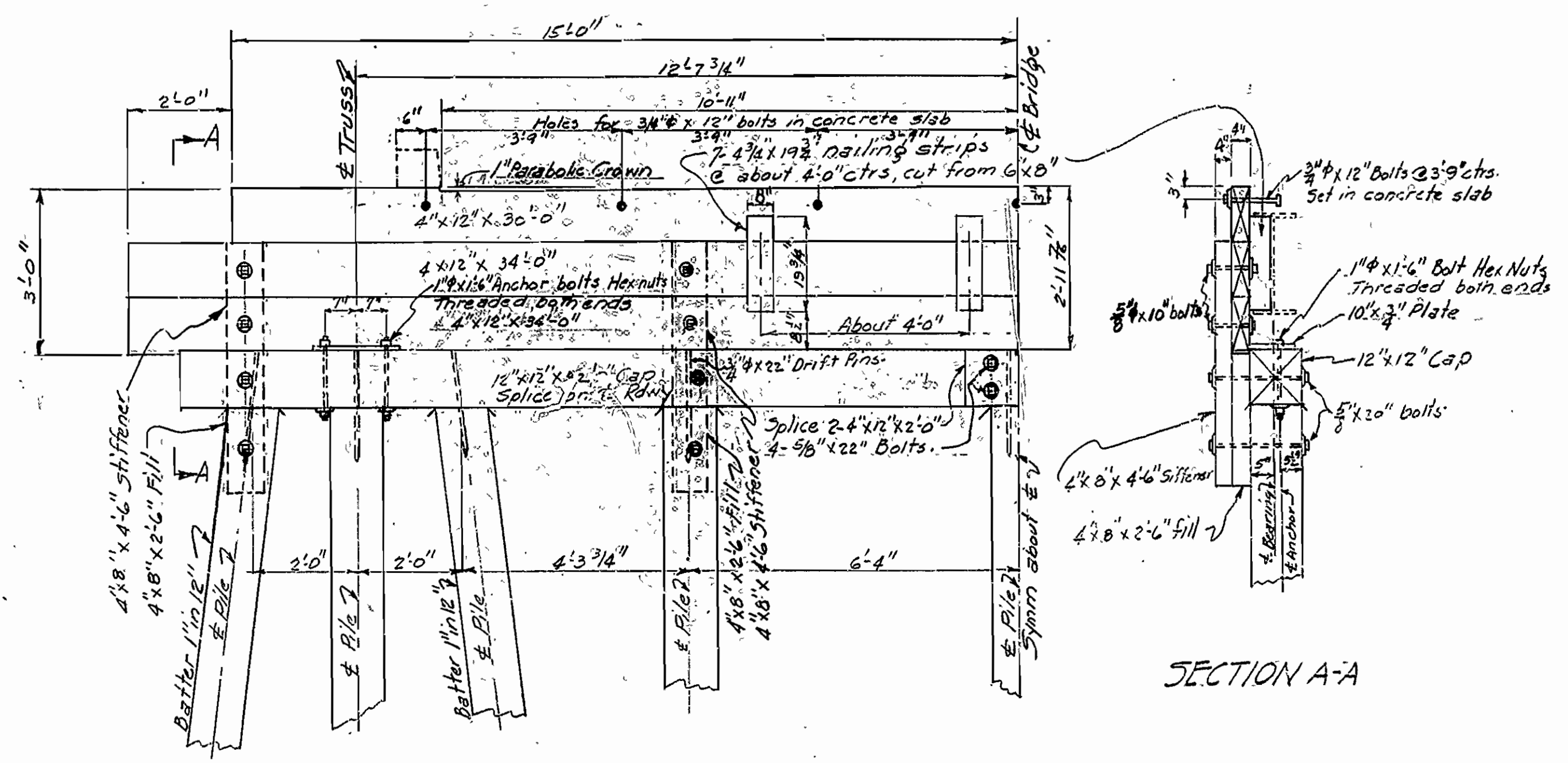
PLAN OF CAP BENTS NO. 2 & 3



SECTION A-A BENT NO. 3  
SECTION B-B BENT NO. 3  
Details not shown same as Bent #2



SECTION A-A BENT NO. 2  
SECTION B-B BENT NO. 2



FRONT ELEVATION BENTS No. 1 & 4

**General Notes:-**  
 All timber and piling shall be Southern Yellow Pine or Pacific Coast Douglas Fir. All timber to be given a preservative treatment of 8 lbs. of creosote oil by the empty cell process. See Section 809 of the specifications. All piling to be given a 12 lb. treatment of creosote oil as described in Section 810.  
 Malleable or cast iron washers shall be used under heads of all bolts as shown on the plans.  
 All bolts and hardware connections for timber to be painted with red lead prior to construction, and all exposed portions of such bolts and hardware to be painted with black asphaltic paint after construction is completed.  
 All hardware including bolts, washers, drift pins, etc. connecting timber to timber or timber to concrete shall not be paid for directly, but shall be included in the price bid for timber in place.  
 Maximum bearing 17 tons per pile. Drive to a minimum capacity of 20 tons.  
 Specifications: Arkansas State Highway Commission Standard Specifications for Road and Bridge Construction adopted March 1, 1940

DETAILS OF BENTS  
 BRIDGE OVER CACHE RIVER  
 DES ARC - COTTON PLANT ROAD  
 WOODRUFF COUNTY  
 ROUTE 38 SEC. 2  
 ARKANSAS STATE HIGHWAY COMMISSION  
 LITTLE ROCK, ARK  
 Drawn By L.A.M. 525-49 Scale 1/2" = 1'-0"  
 BRIDGE No. 2561 DRAWING No. 7341

*L.A.M.*  
 Bridge Engineer

