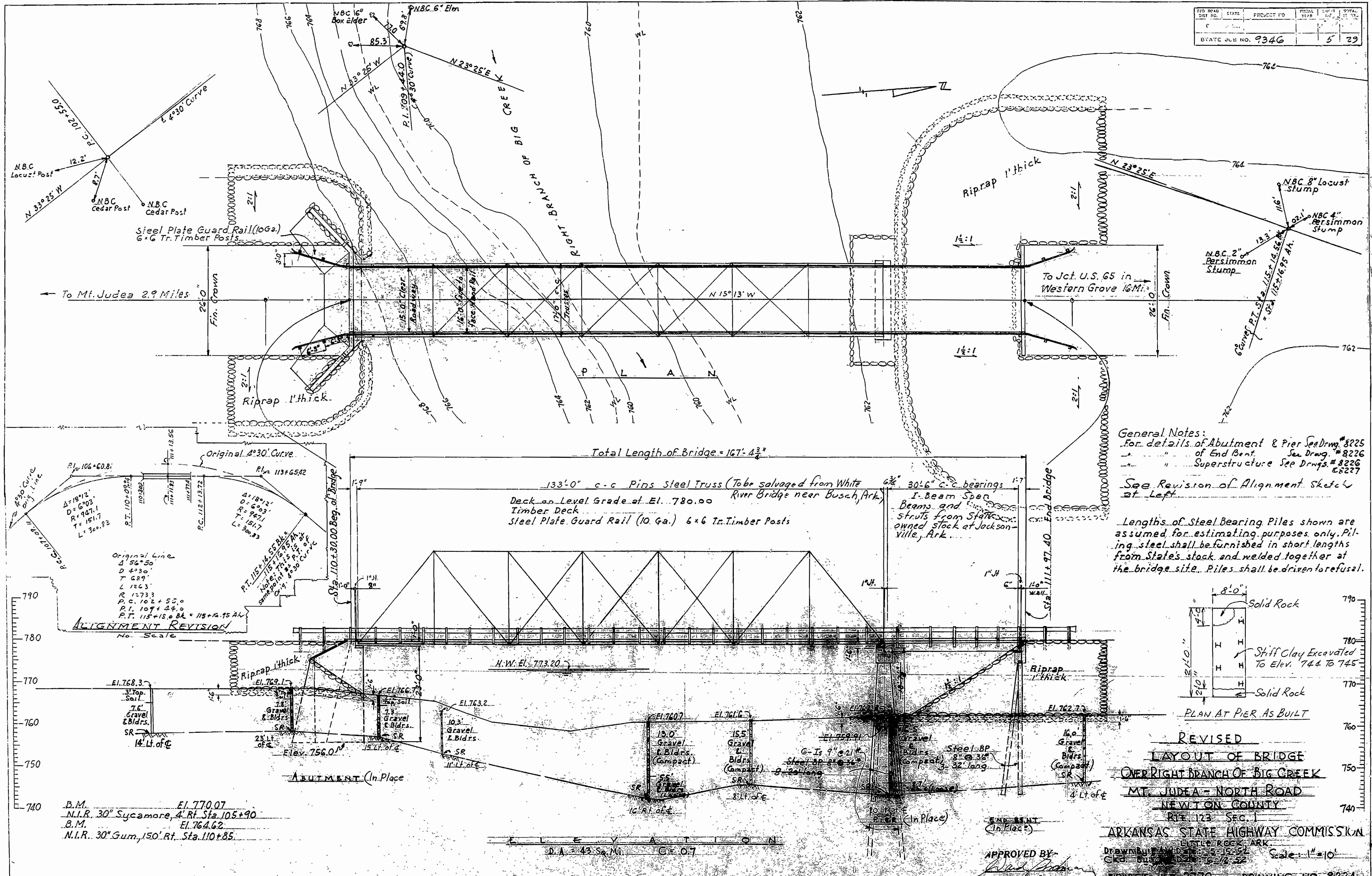
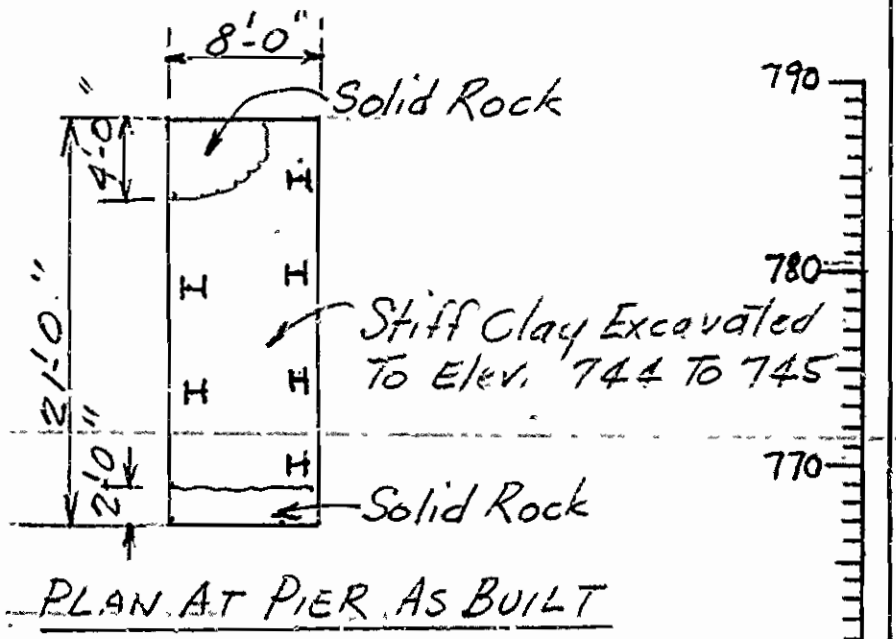


STATE	PROJECT NO.	FISCAL YEAR	SHEET NO.	TOTAL SHEETS
AR	9346		5	29



**General Notes:**  
 For details of Abutment & Pier See Drawg. # 8225  
 " " of End Bent See Drawg. # 8226  
 " " Superstructure See Drawg. # 8227 & 8227  
 See Revision of Alignment Sketch at Left

Lengths of Steel Bearing Piles shown are assumed for estimating purposes only. Piling steel shall be furnished in short lengths from State's stock and welded together at the bridge site. Piles shall be driven to refusal.



**REVISED LAYOUT OF BRIDGE OVER RIGHT BRANCH OF BIG CREEK MT. JUDEA - NORTH ROAD NEWTON COUNTY**  
 Rts. 123 Sec. 1  
 ARKANSAS STATE HIGHWAY COMMISSION  
 Drawn by [Signature] Date 12-22-52 Scale: 1"=10'  
 Bridge No. 2770 DRAWING NO. 8224

B.M. El. 770.07  
 N.I.R. 30" Sycamore, 4' Rt. Sta. 105+90  
 B.M. El. 764.62  
 N.I.R. 30" Gum, 150' Rt. Sta. 110+85

**ELEVATION**  
 D.A. = 43 So. Mt. Cr. O.7

APPROVED BY  
 [Signature]  
 Bridge Design Engineer

NO. ROAD DIST. NO.	STATE	PROJECT NO.	SCALE	SHEET NO.	TOTAL SHEETS
6	ARK.			3	32
STATE JOB NO. 9346					

SUMMARY OF BRIDGE QUANTITIES

CODE NO. X032

ITEM NO.	ITEM	UNIT	BRIDGE NO. 2769				BRIDGE NO. 2770					TOTALS JOB NO. 9346
			Abutment No. 1	Abutment No. 2	Span	Totals	Abutment No. 1	Abutment No. 2	Span No. 1	Span No. 2	Totals	
SP805-3	Steel Plate Guard Rail (10 Gage)	Lin. Ft.	30	30	271	331	30	30	268	61	389	720
SP&807	Structural Steel in Beam Spans	Lb.							200	200	200	
SP&807	Structural Steel in Truss Spans	Lb.			1,600	1,600			1,600		1,600	3,200
809	Treated Bridge Timber	MFEM			12,068	12,068			12,006	3,268	15,274	27,342
909	Riprap	Cu. Yd.	53	70		123	79	160			239	362
SP	Structural Steel Beam Span Furnished by the State	Lb.							10,000	10,000	10,000	
SP	Removing and Re-erecting Truss Spans	Compl. Item				50%				50%	100%	
SP	Removing and Storing Bridge Spans	Compl. Item				50%				50%	100%	

NOTE: All substructure units are in place.

SUMMARY OF BRIDGE QUANTITIES  
 RIGHT AND LEFT BRANCH OF BIG CREEK  
 MT. JUDEA — NORTH  
 NEWTON COUNTY  
 ROUTE 123 SEC. 1

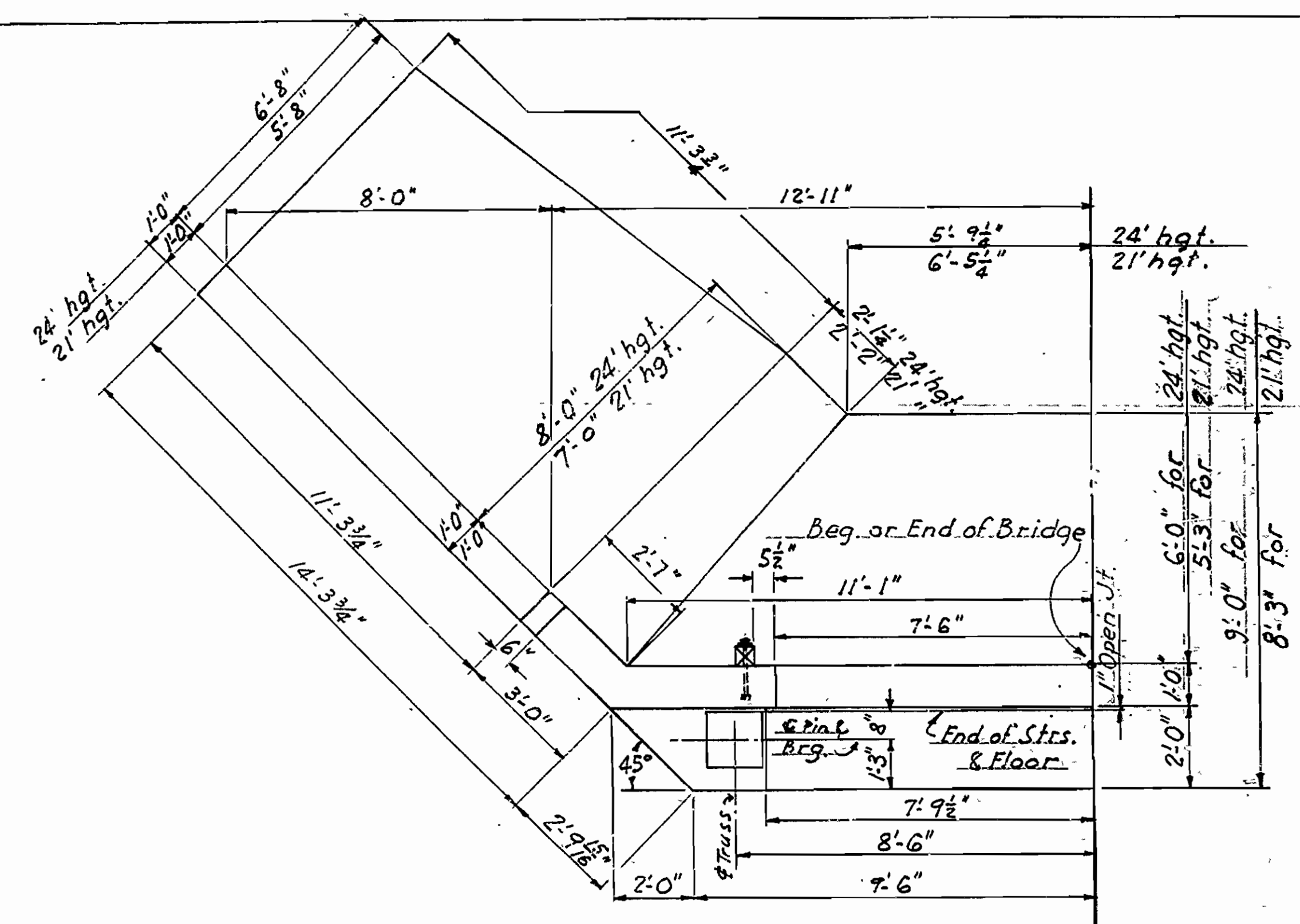
ARKANSAS STATE HIGHWAY COMMISSION  
 LITTLE ROCK, ARK.

DRAWN BY: VEH DATE: 2-11-54  
 TRACED BY: DATE:  
 CHECKED BY: L.P.C. DATE: 5-11-54

BRIDGE NO. 2769 & 2770 DRAWING NO. 8223-A

*W. J. ...*  
 Bridge Design Engineer

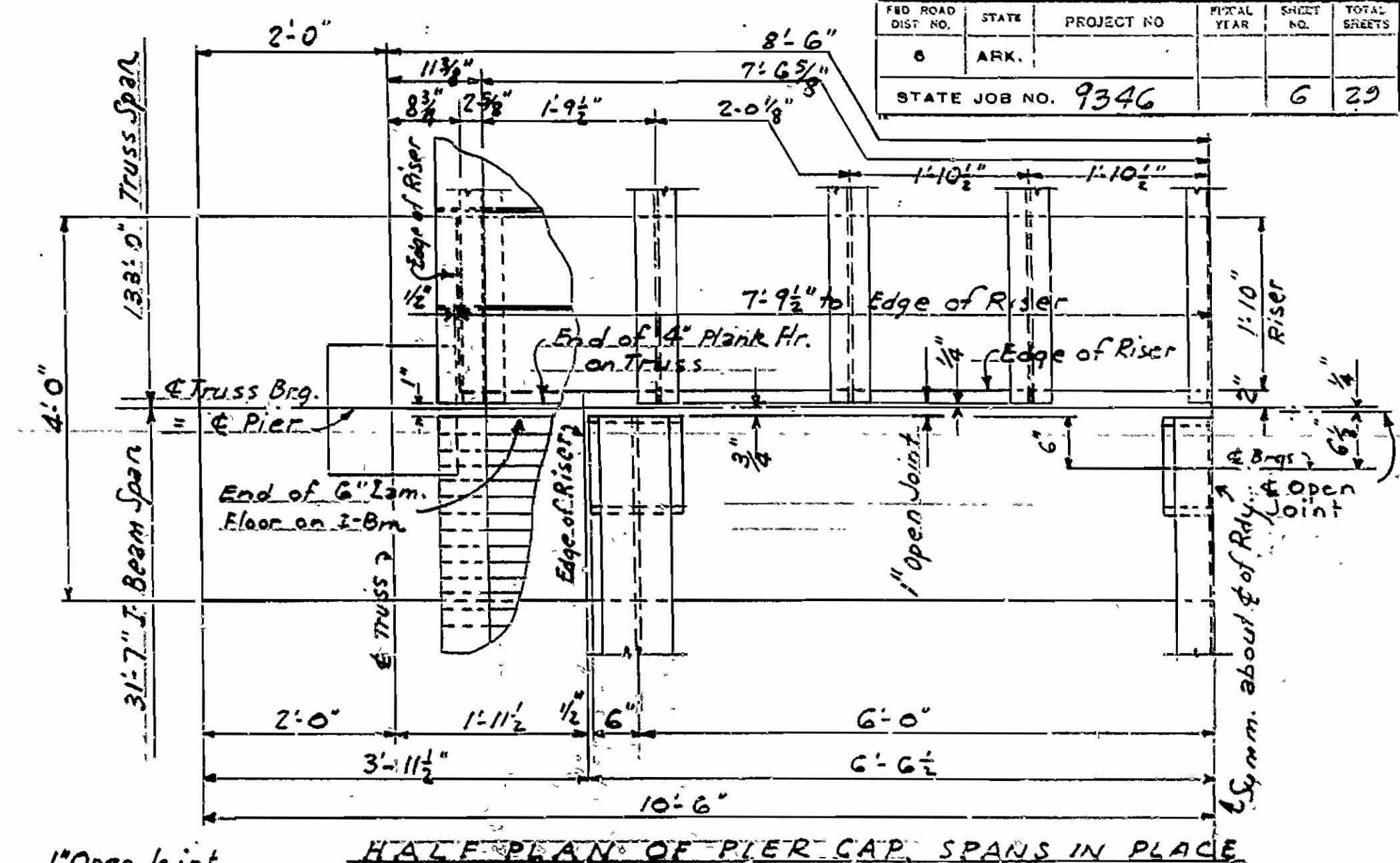
FED. ROAD DIST. NO.	STATE	PROJECT NO.	FISCAL YEAR	SHEET NO.	TOTAL SHEETS
6	ARK.	9346		6	29
STATE JOB NO. 9346					



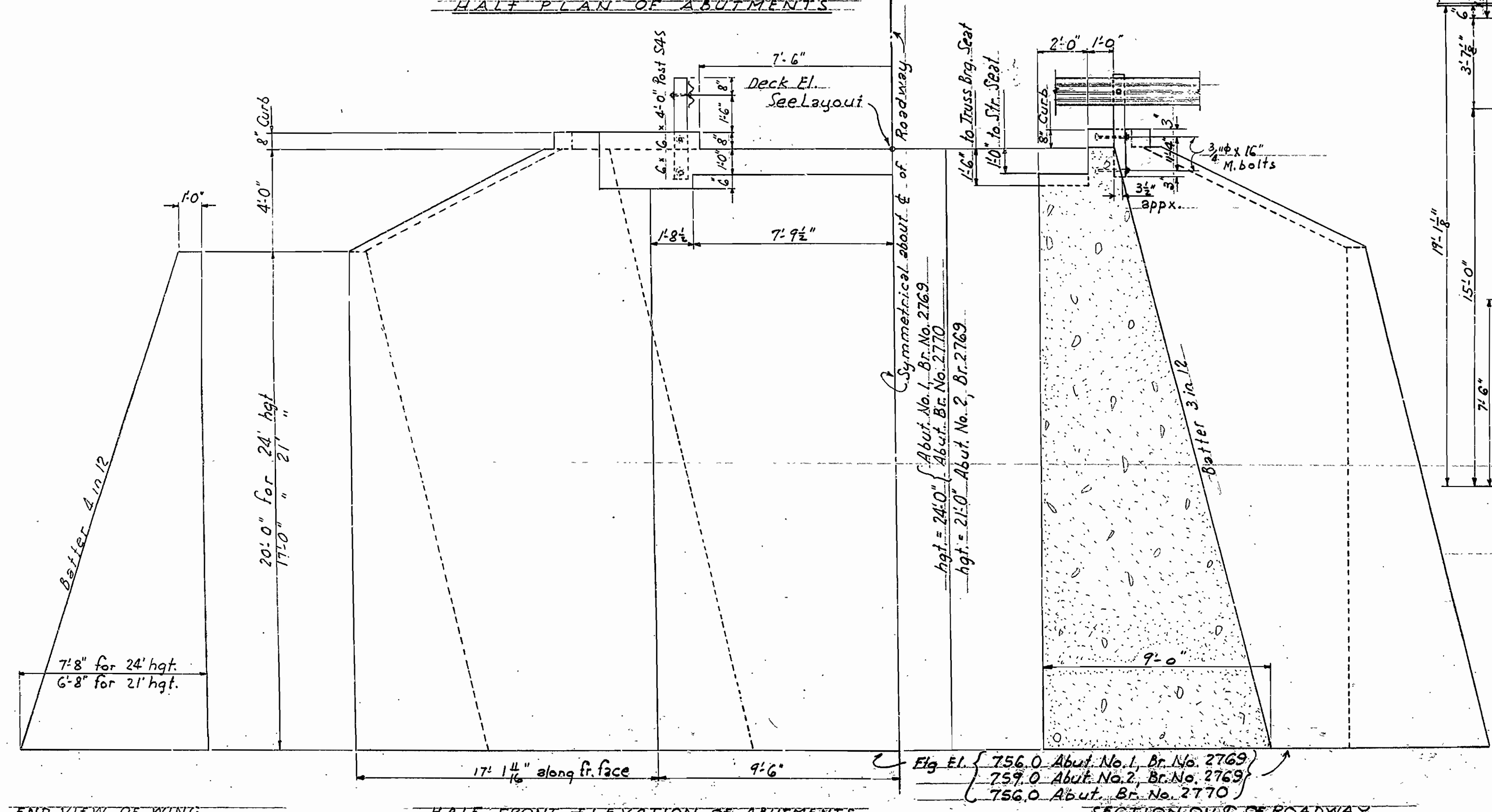
HALF PLAN OF ABUTMENTS

LIST OF REINFORCING STEEL IN PIER

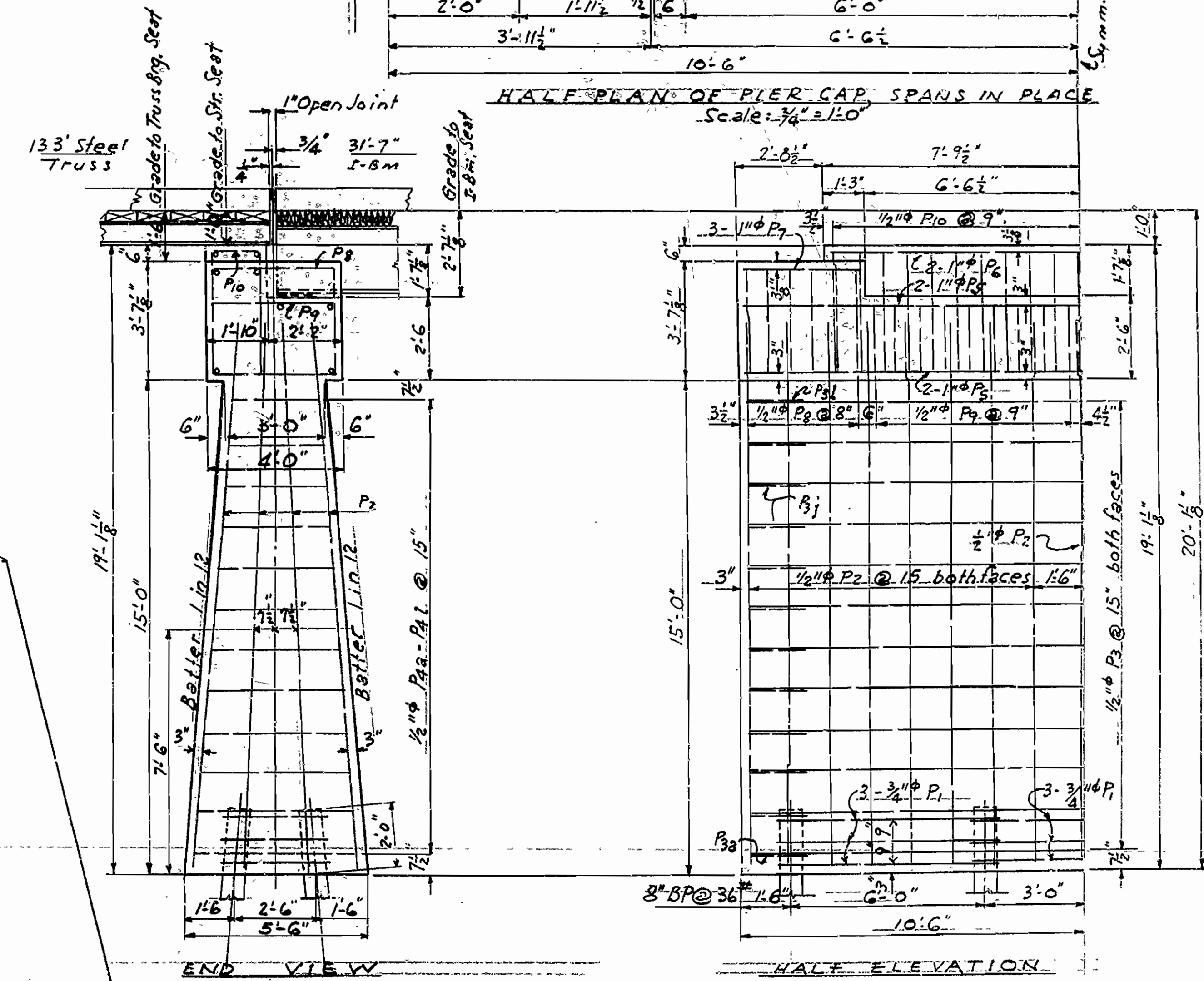
No. Reqd.	Mark	Size	Length	A	B	Diagram
9	P1	3/4"	20-8	6-9	3-2 1/2	[Diagram]
38	P2	1/2"	16-6	Straight		
24	P3	1/2"	20-8	Straight		[Diagram]
24	P42	1/2"	7-3 1/2	5-0 1/2	1-8	
4	P5	1"	20-8	Straight		
2	P6	1"	15-3	Straight		
6	P7	1"	3-7	Straight		
12	P8	1/2"	14-5	3-7 1/2	3-2 1/2	[Diagram]
18	P9	1/2"	12-3	3-7 1/2	2-1 1/2	
21	P10	1/2"	11-1	3-8 1/2	1-5 1/2	P42-P47



HALF PLAN OF PIER CAP SPANS IN PLACE  
Scale: 3/8" = 1'-0"



HALF FRONT ELEVATION OF ABUTMENTS



PIER DETAILS BR. NO. 2770  
Scale: 3/8" = 1'-0"

DETAILS OF ABUTMENTS & PIER  
BRIDGES OVER  
RIGHT & LEFT BRANCHES OF BIG CREEK  
MT. JUDEA-NORTH ROAD  
NEWTON COUNTY  
RTE. 123 Sec. 1

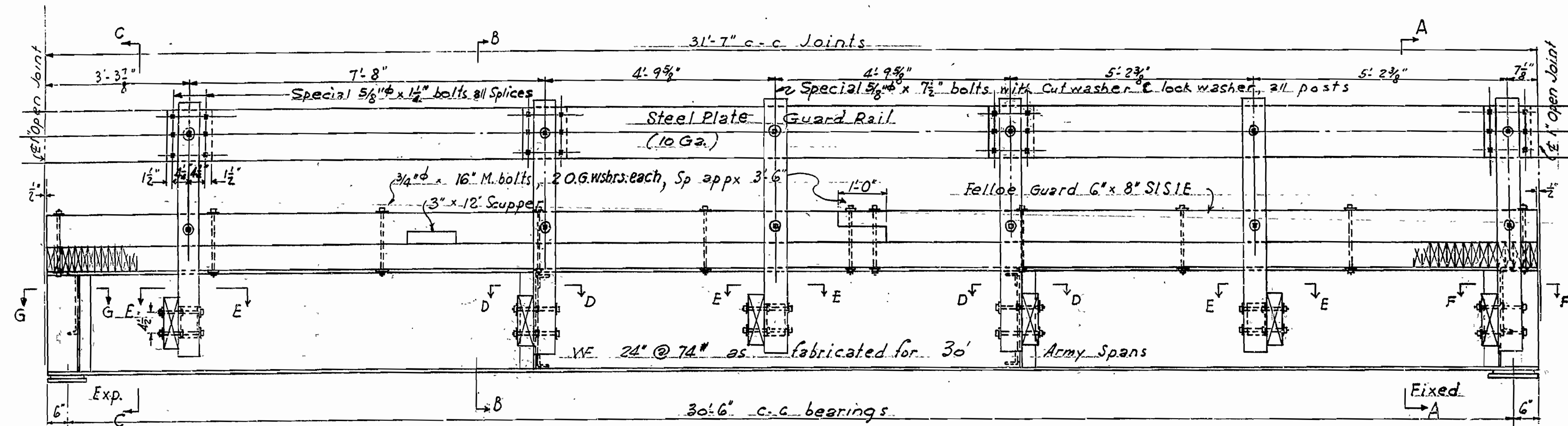
Drill holes in concrete for anchor bolts.

APPROVED BY  
[Signature]

Drawn by FAW Date: 7-2-52  
Ckd. by [Signature] Date: 7-2-52  
Scale: As noted  
BRIDGES NO. 2769 & 2770 DRAWING NO. 8225

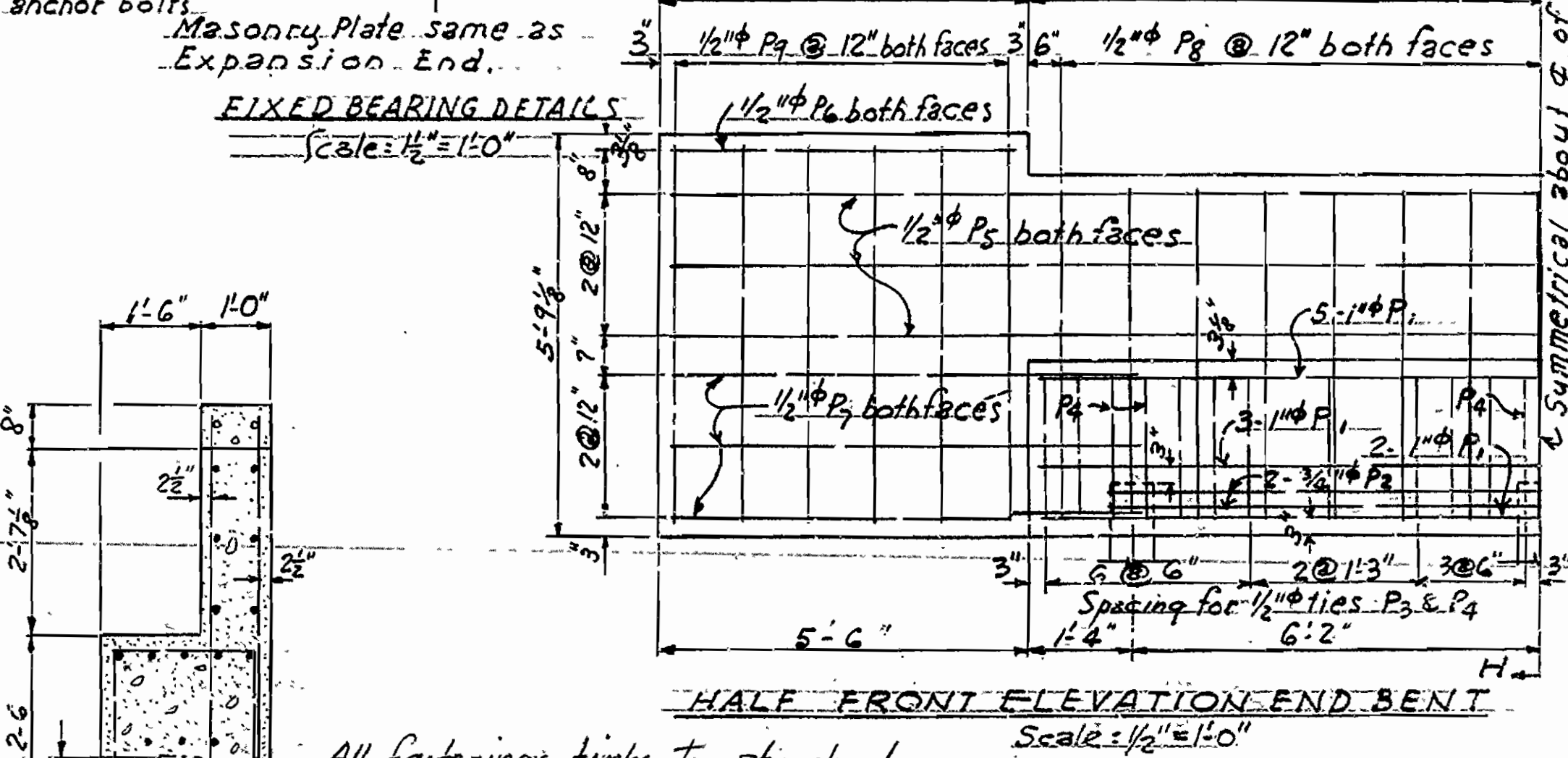
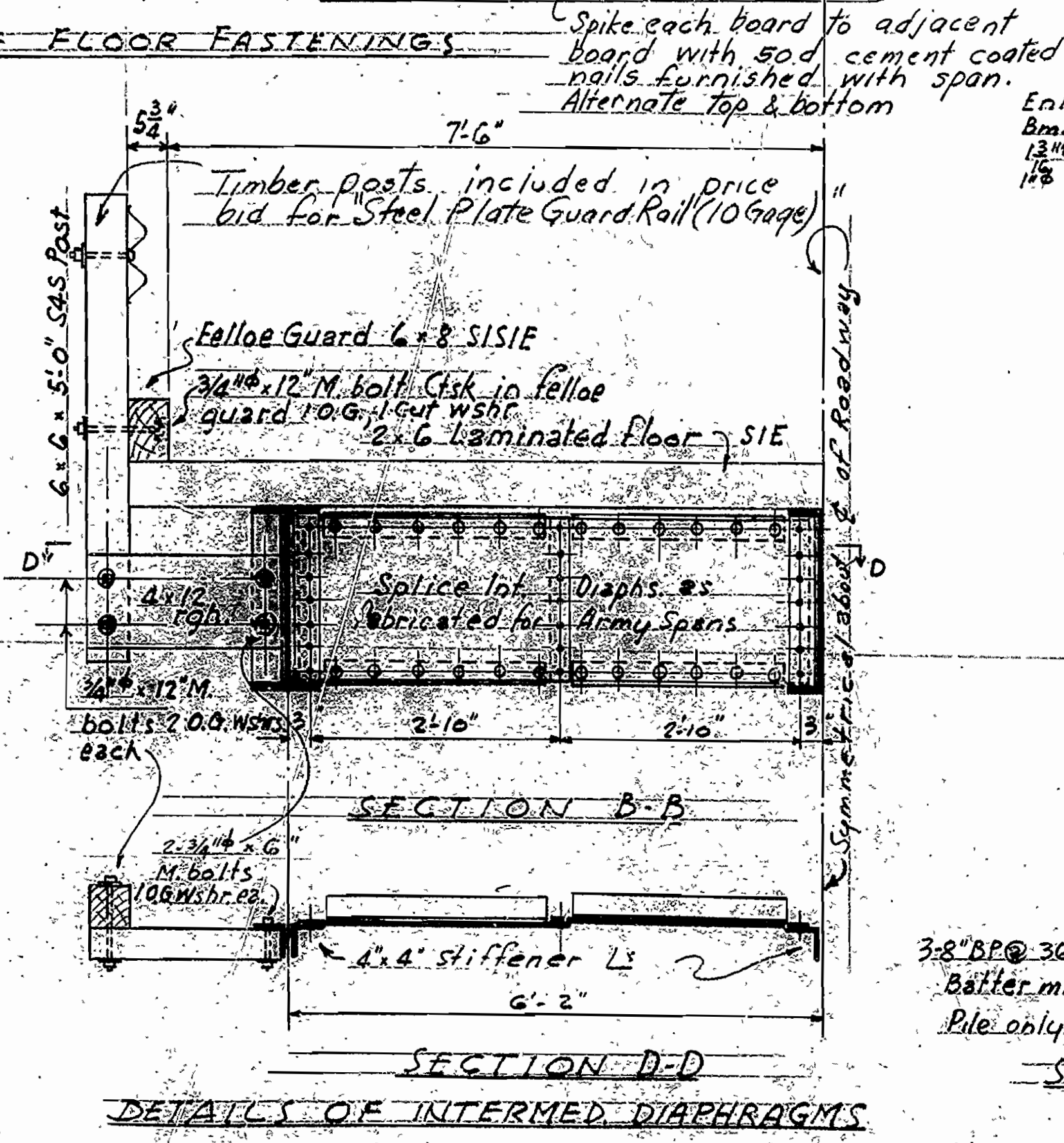
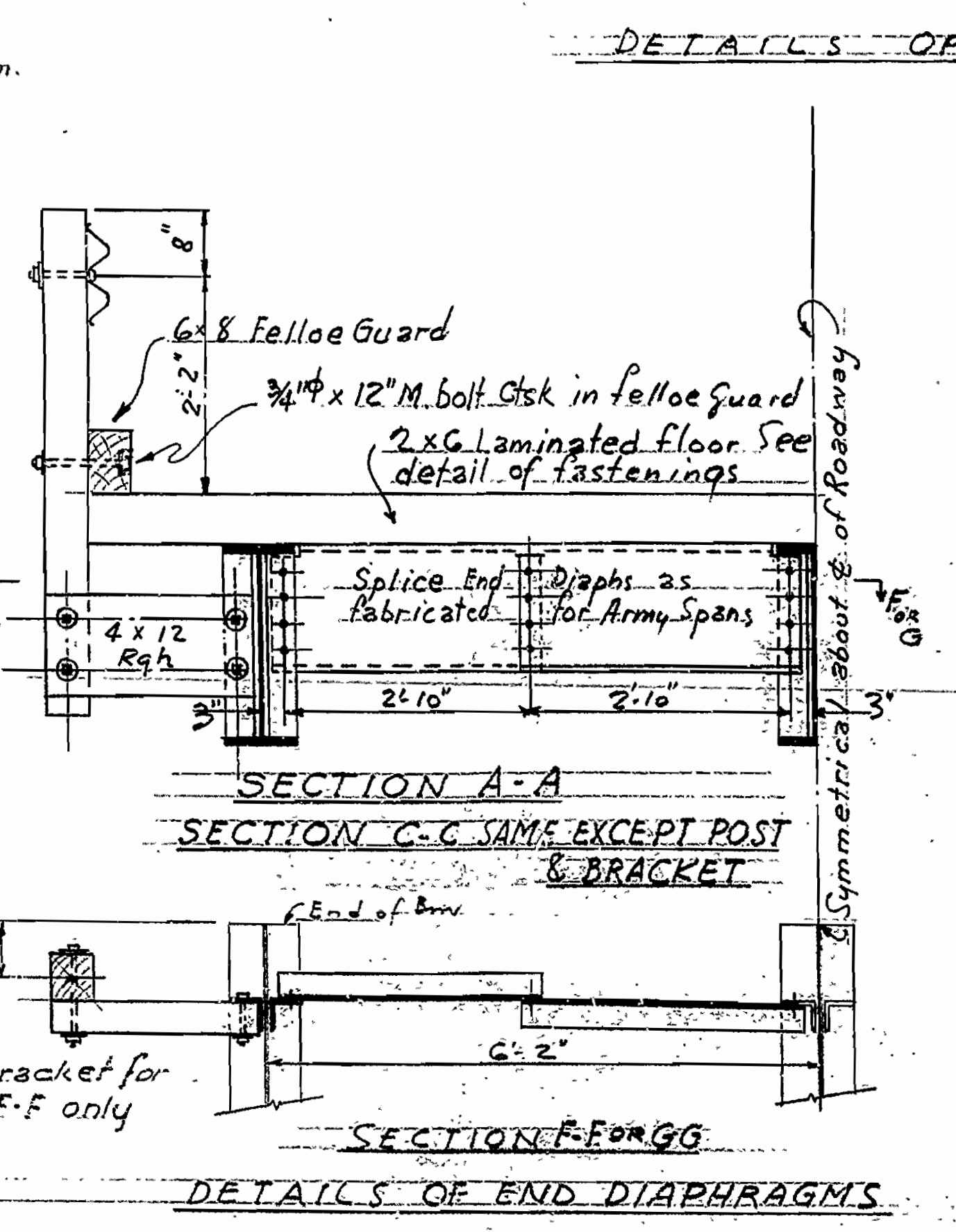
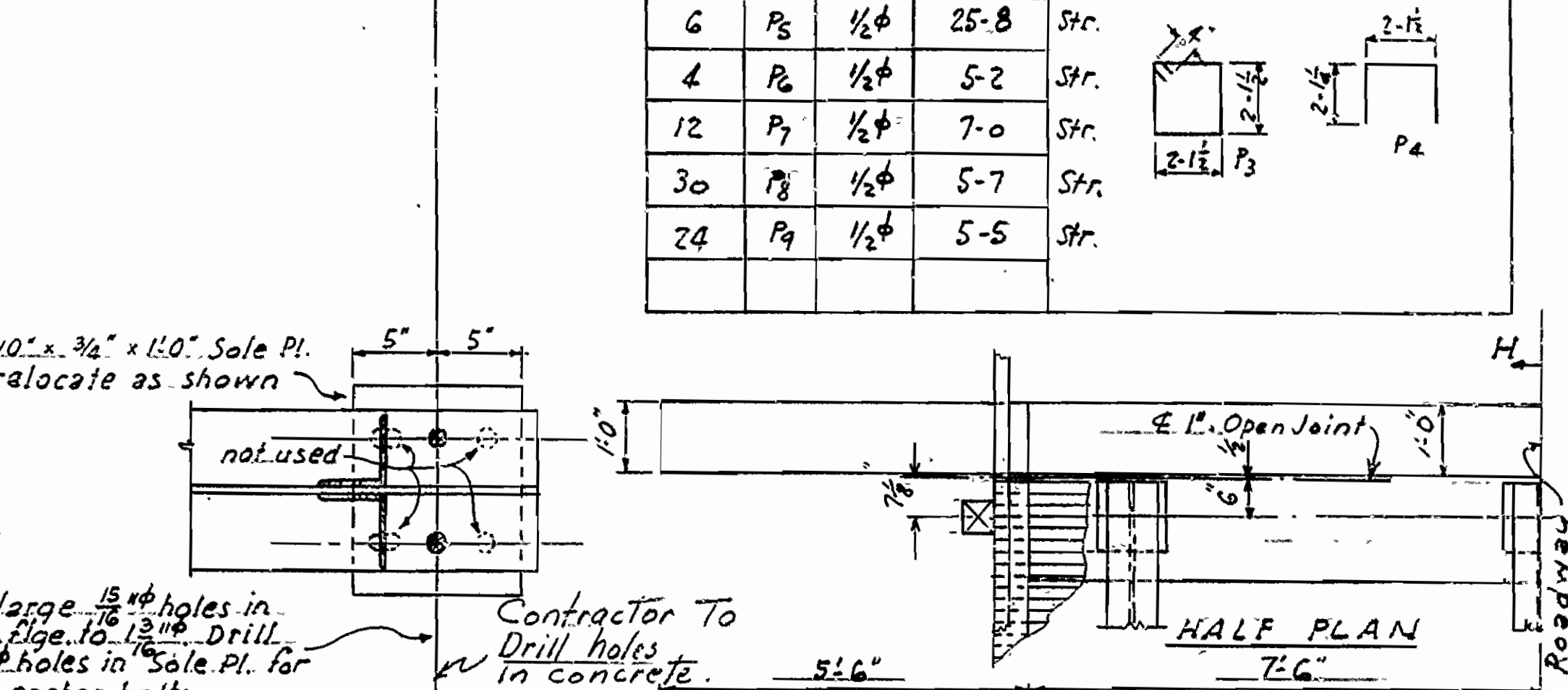
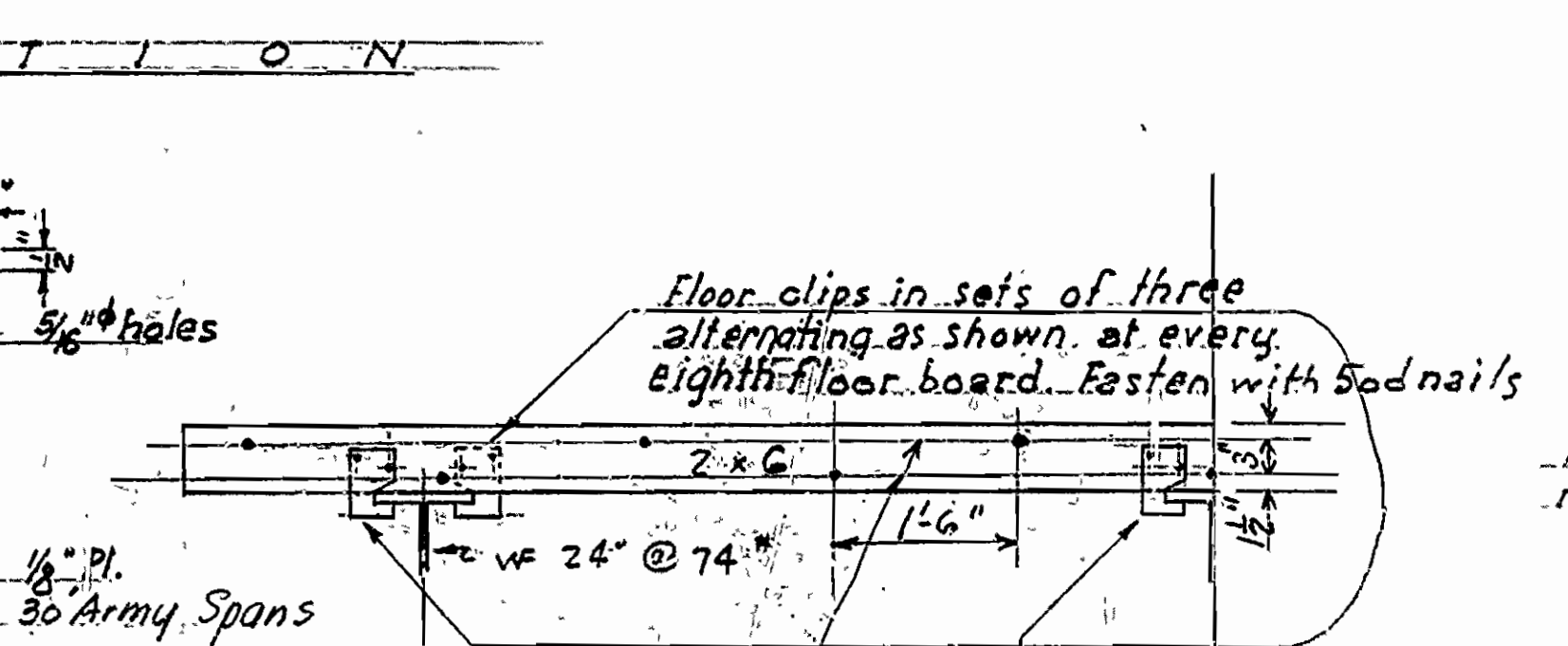
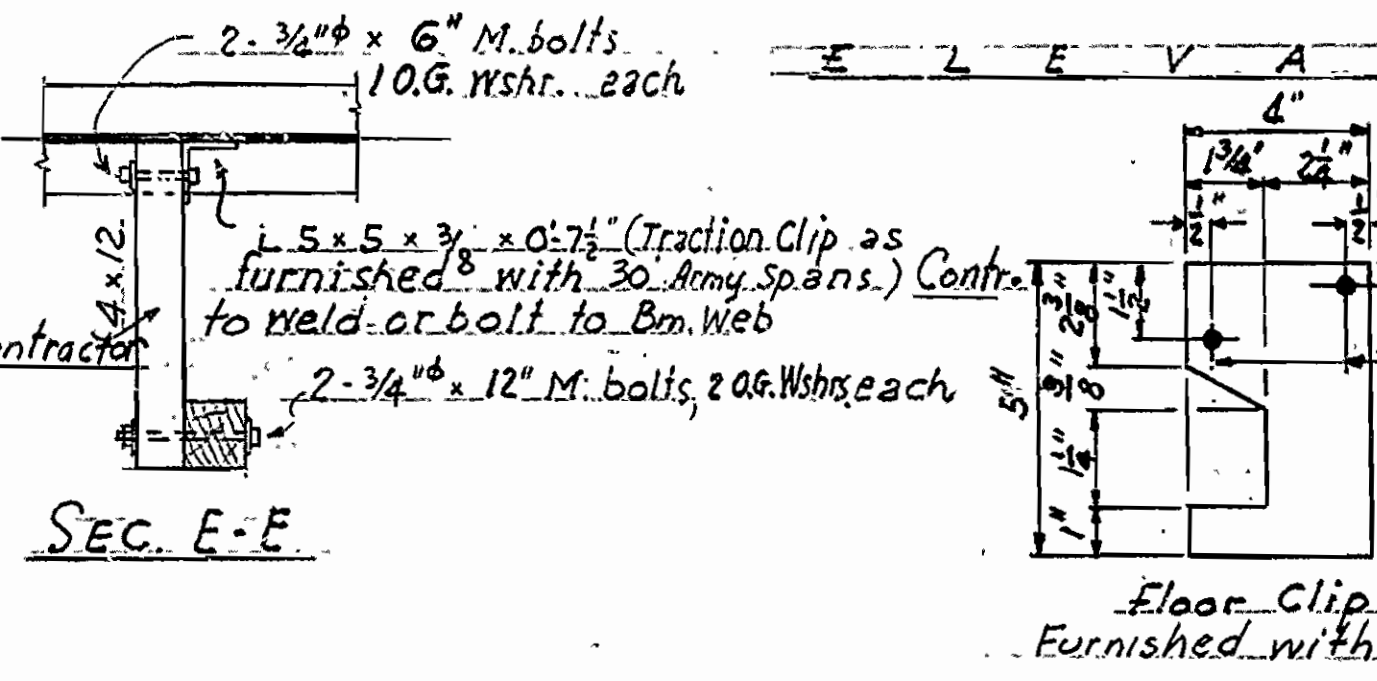
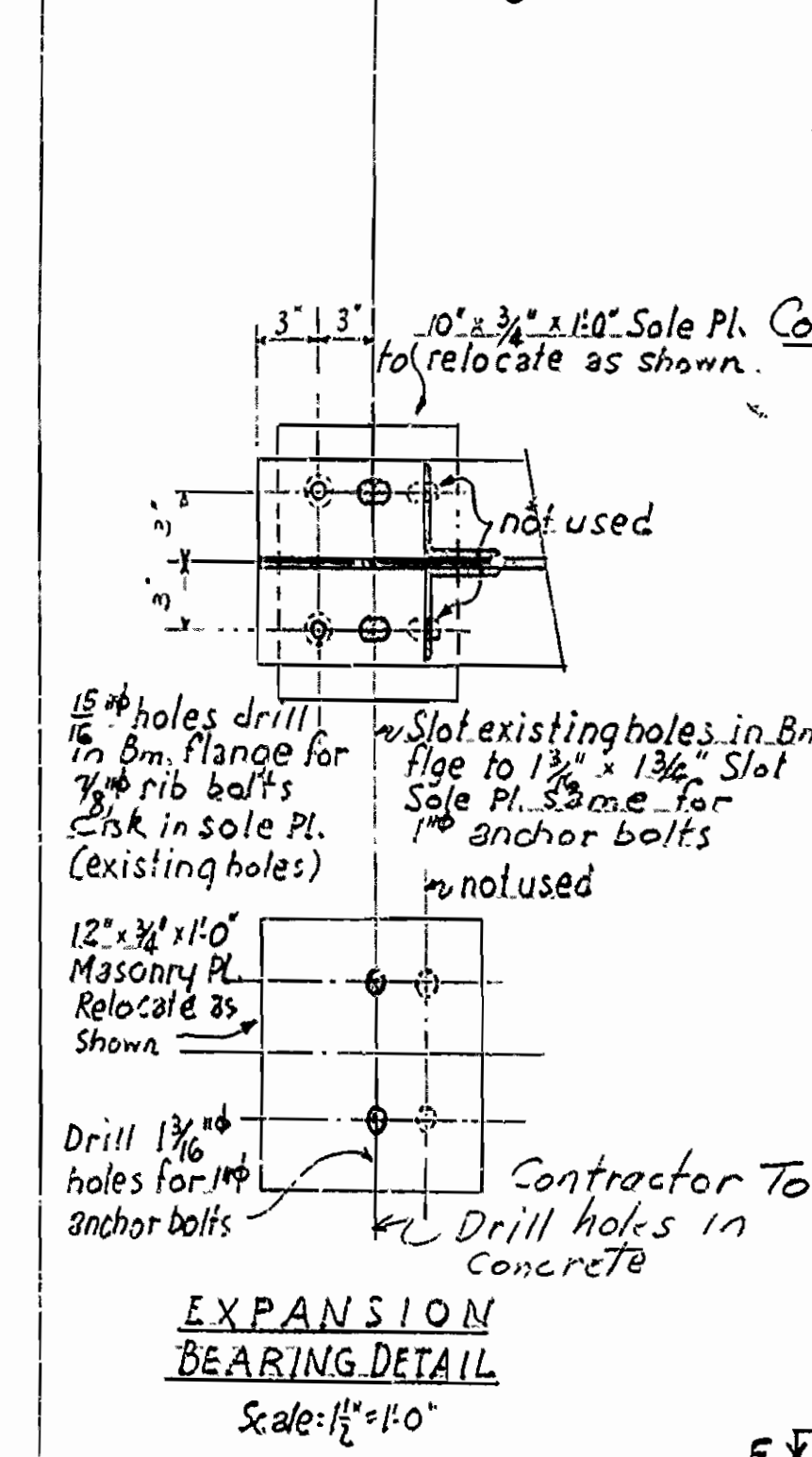
Fig. El. { 756.0 Abut. No. 1, Br. No. 2769 }  
          { 759.0 Abut. No. 2, Br. No. 2769 }  
          { 756.0 Abut. Br. No. 2770 }

FED. ROAD DIST. NO.	STATE	PROJECT NO.	FISCAL YEAR	SHEET NO.	TOTAL SHEETS
8	ARK.			7	29
STATE JOB NO. 9346					



LIST OF REINFORCING STEEL IN END BENT

No.	Reqd. Mark	Size	Length	Diagram
10	P <sub>1</sub>	1" φ	14-8	Str.
2	P <sub>2</sub>	3/4" φ	28-10	
18	P <sub>3</sub>	1/2" φ	9-3	
6	P <sub>4</sub>	1/2" φ	6-4	
6	P <sub>5</sub>	1/2" φ	25-8	Str.
4	P <sub>6</sub>	1/2" φ	5-2	Str.
12	P <sub>7</sub>	1/2" φ	7-0	Str.
30	P <sub>8</sub>	1/2" φ	5-7	Str.
24	P <sub>9</sub>	1/2" φ	5-5	Str.

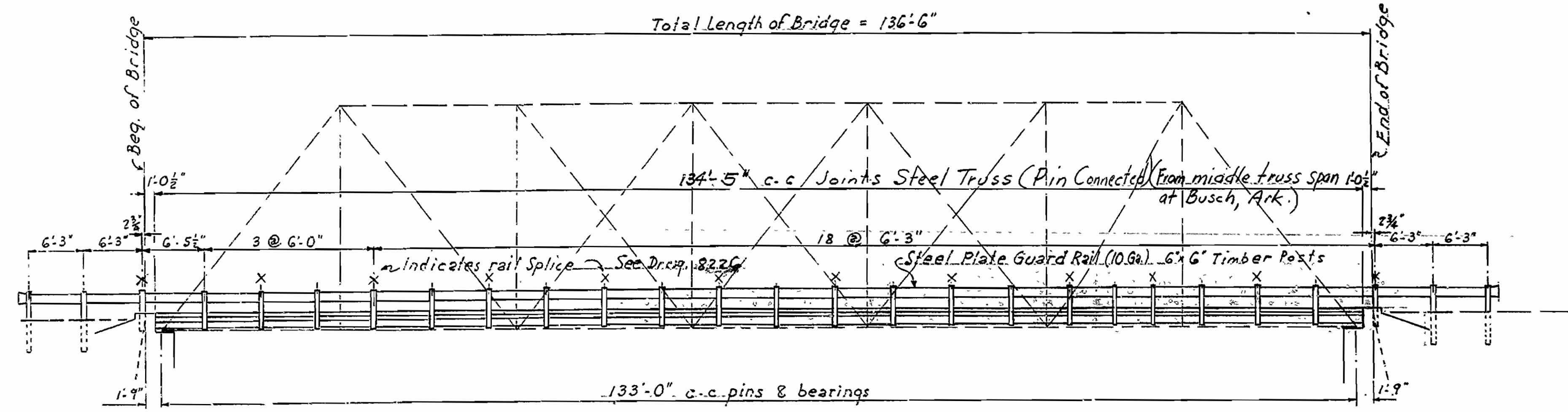


DETAILS OF 31'-7" I-BEAM SPAN, IS CLRDY & R.C. END BENT ON STEEL PILES BRIDGE OVER RIGHT BRANCH OF BIG CREEK

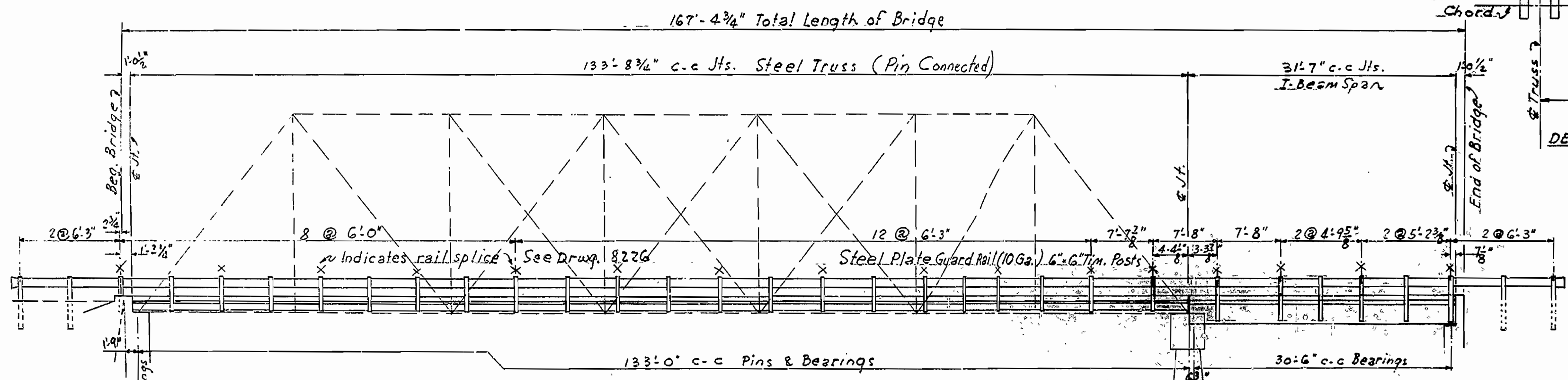
MT. JUDIA - NORTH ROAD  
NEWTON COUNTY  
RTE 123 SEC 1  
ARIZANSAS STATE HIGHWAY COMMISSION  
LITTLE ROCK, ARK.  
Drawn by: [Name] Date: 6-16-52  
Ckd: [Name] Date: 7-12-52  
Scale: 3/4" = 1'-0" as noted

APPROVED BY  
[Signature]

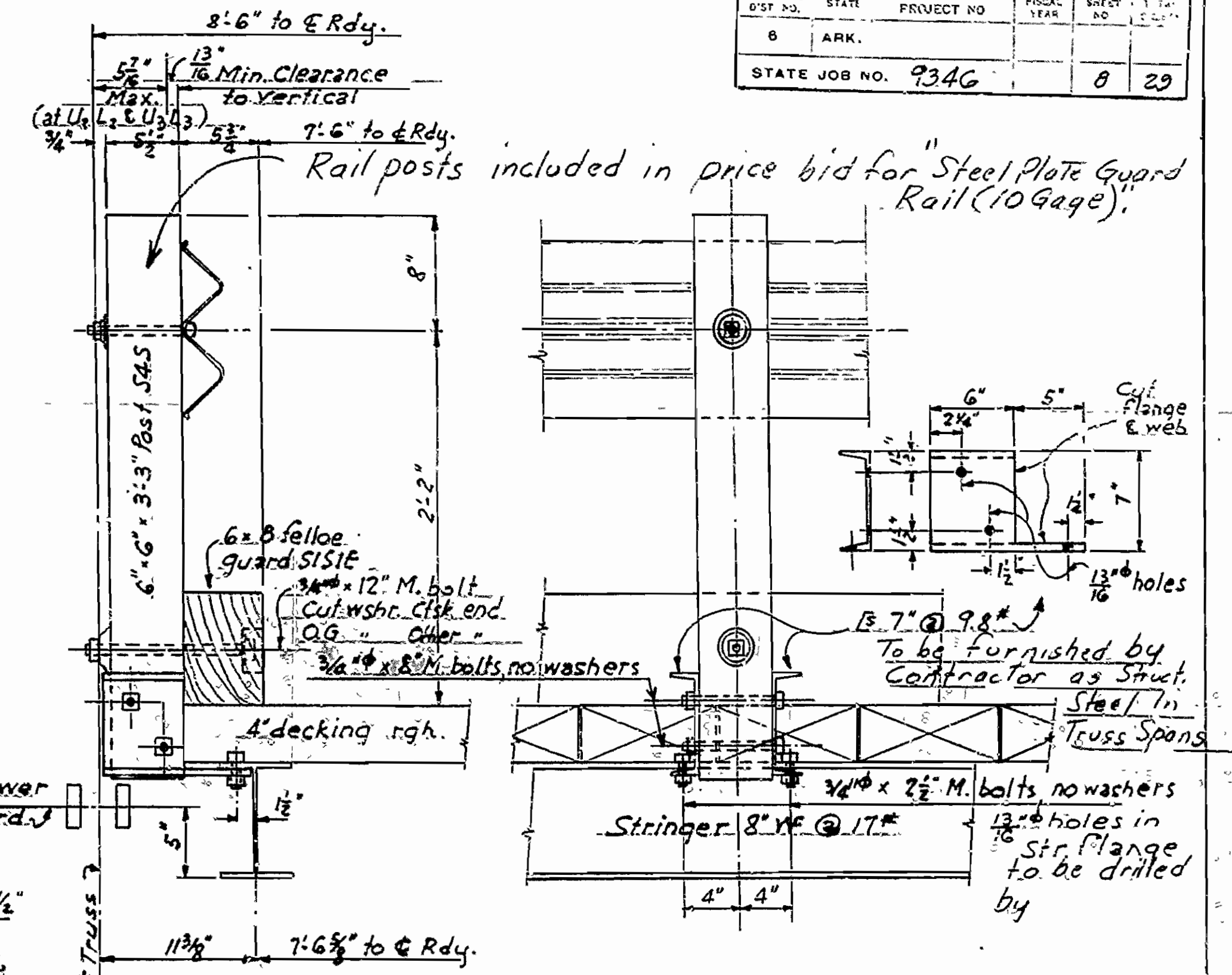
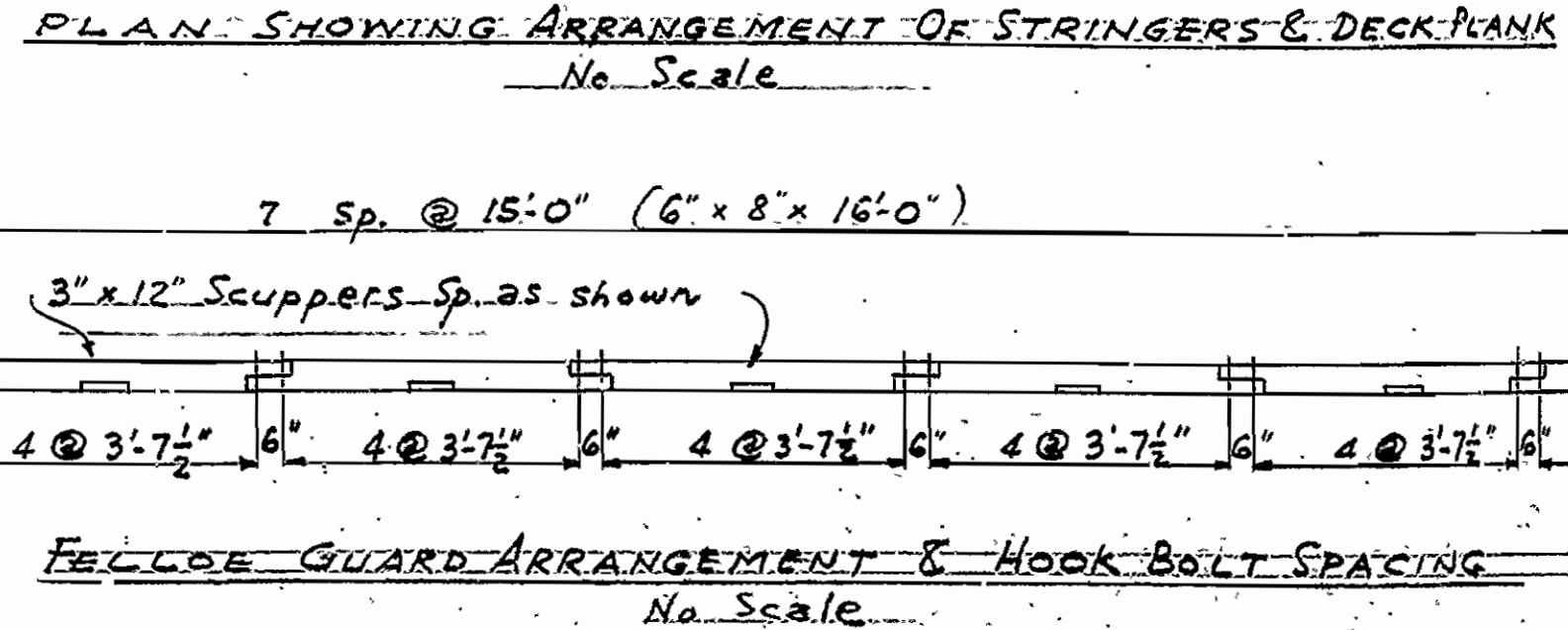
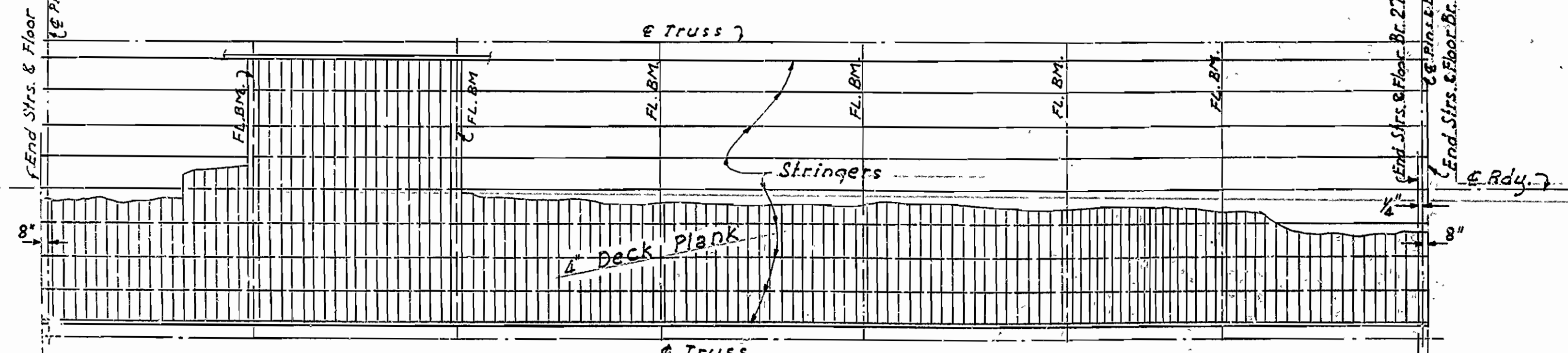
FED. ROAD DIST. NO.	STATE	PROJECT NO.	FISCAL YEAR	SHEET NO.	TOTAL SHEETS
8	ARK.			8	29
STATE JOB NO. 934G					



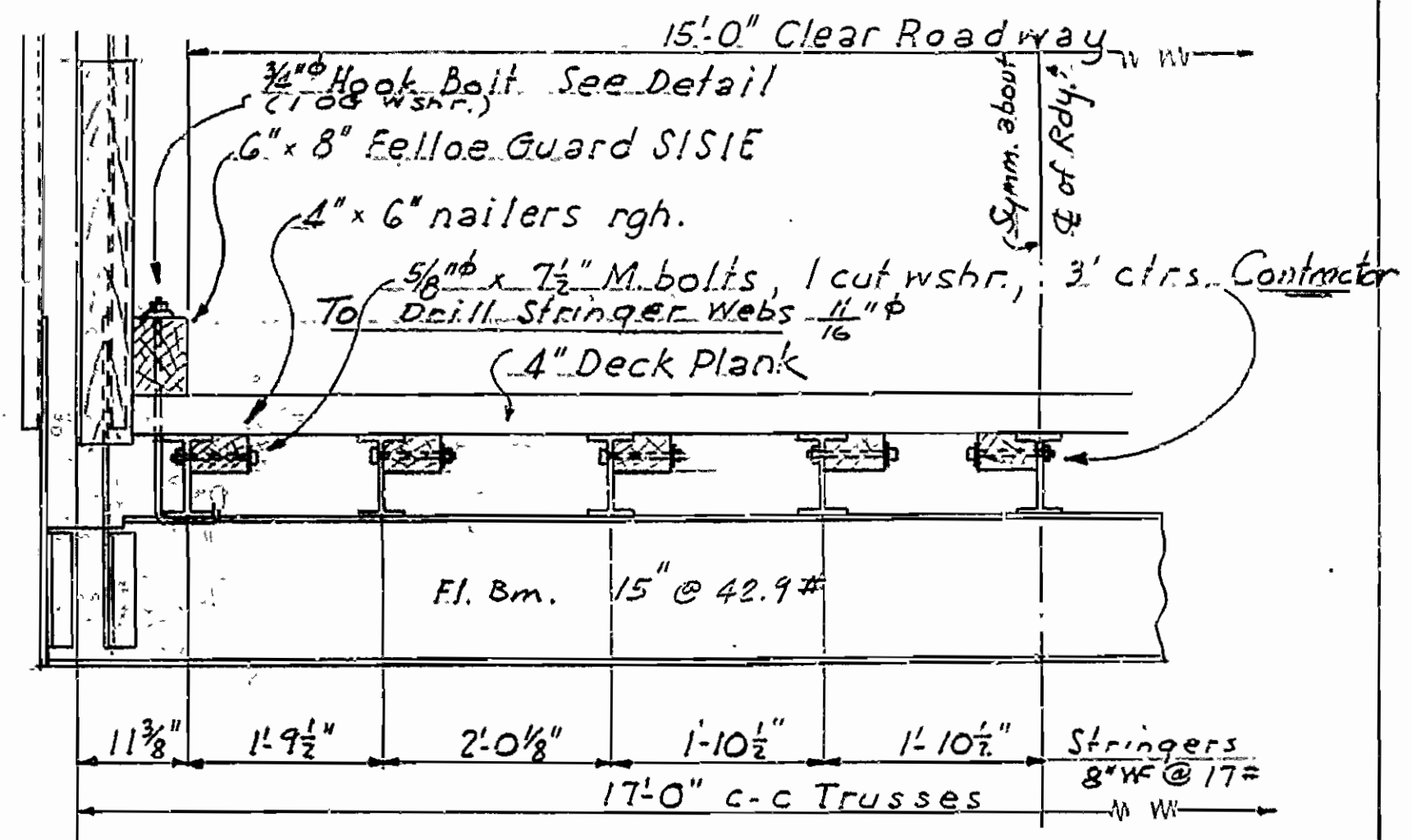
SPACING FOR HANDRAIL ON TRUSS BRIDGE NO. 2769  
Scale: 1/8" = 1'-0"



SPACING FOR HANDRAIL ON TRUSS & I-BEAM SPAN BRIDGE NO. 2770  
Scale: 1/8" = 1'-0"

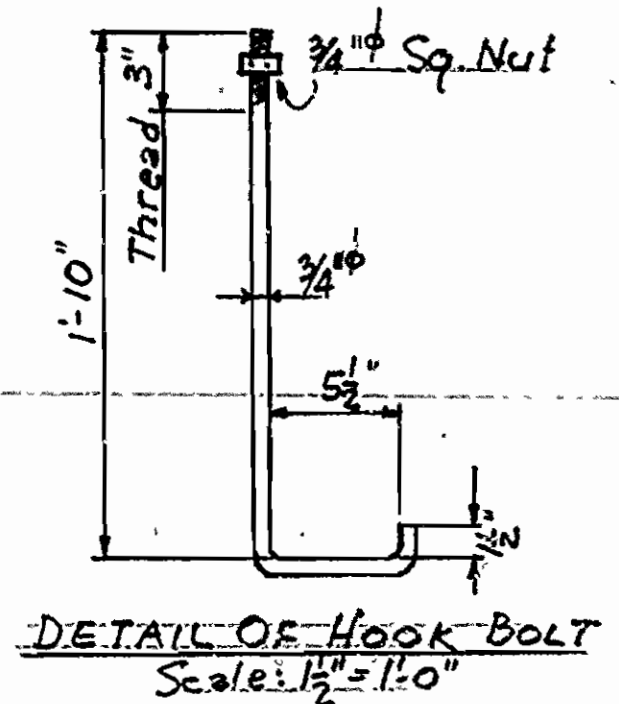


DETAILS OF RAIL POST CONNECTIONS ON TRUSS SPANS  
Scale: 1/2" = 1'-0"



TYPICAL SECTION OF ROADWAY  
Scale: 3/4" = 1'-0"

Note: All fastenings timber to structural steel furnished by Contractor shall be paid for as Structural Steel in Truss Spans. All fastenings timber to timber to be included in price bid for "Treated Timber"



DETAILS OF 133' STEEL TRUSS SPANS  
BRIDGES OVER  
RIGHT & LEFT BRANCHES OF BIG CREEK  
MT. JUDEA - NORTH ROAD  
NEWTON COUNTY  
RTE 173 Sec. 1

ARKANSAS STATE HIGHWAY COMMISSION  
LEWIS ROCK, ARK.

APPROVED BY  
*Ward P. ...*  
Bridge Design Engineer

Scale: As noted  
BRIDGES NO. 2769 & 2770 DRAWING NO. 8227