

COUNTY NO.	STATE	PROJECT NO.	FISCAL YEAR	SHEET NO.	TOTAL SHEETS
6	ARK.	5194(2)			
STATE JOB NO. 9293					

SUMMARY OF BRIDGE QUANTITIES CODE No. X032

ITEM No.	ITEM	UNIT	ABUT. No. 1	PIER No. 1	PIER No. 2	PIER No. 3	PIER No. 4	PIER No. 5	ABUT. No. 2	SPANS No. 1 & 6	SPAN No. 3	SPANS 2, 4, & 5	BRIDGE TOTAL
103	DRY EXCAVATION FOR STRUCTURES	Cu. Yd.	73	24	31	31	30	20	75				284
103	WET EXCAVATION FOR STRUCTURES	Cu. Yd.		36	15	61	49	78	150				452
103	SOLID ROCK EXCAVATION FOR STRUCTURES	Cu. Yd.		9	6	9	4	4	11				43
SP & 802	CLASS "S" CONCRETE FOR BRIDGES	Cu. Yd.	14.97	9.65	9.86	9.86	9.63	9.65	14.97	58.26	38.64	101.49	276.99
SP & 802	CLASS "B" CONCRETE FOR BRIDGES	Cu. Yd.	39.73	68.05	84.72	79.01	68.05	84.72	152.07				576.35
SP & 803	REINFORCING STEEL	Lb.	891	371	371	371	371	371	891	12,744	8235	21,847	48,464
SP & 807	STRUCTURAL STEEL IN TRUSS SPANS	Lb.	313						313	2464	2535	3760	9,385
909	RIPRAP	Cu. Yd.							181				181
929	BRIDGE NAME PLATES (TYPE "C")	EACH	1										1
SP	ERECTION OF STRUCTURAL STEEL FURNISHED BY THE STATE	COMP. ITEM											100%

SUMMARY OF STEEL IN BRIDGE

Item # 10001 Carbon Steel
 Code No. 102 Reinf. Bars --- 24.39 T's
 " 13 Plates --- 2.03 T's
 " 14 Shapes/Piling --- 1.50 T's
 " 17 Other Mill Products --- 0.38 T's
 Gr. Total --- 28.26 T's

Structural Steel furnished by the State
 105 Tons (Free to Project 5194(2) Job No. 9293)

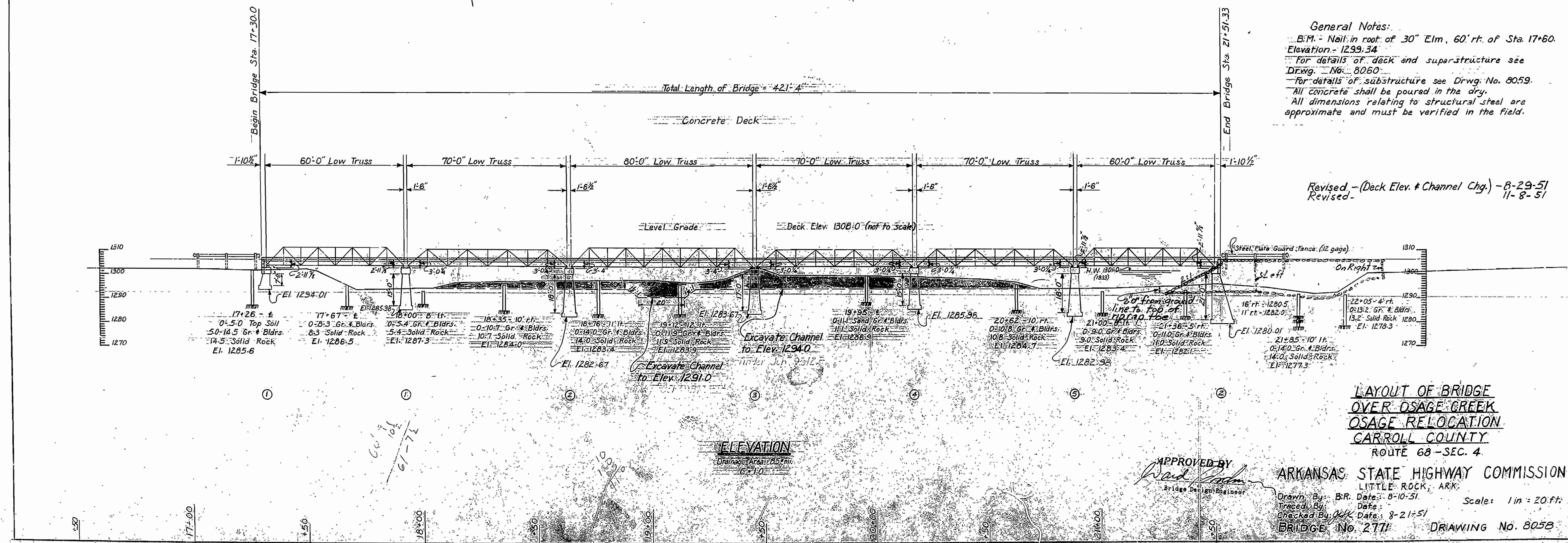
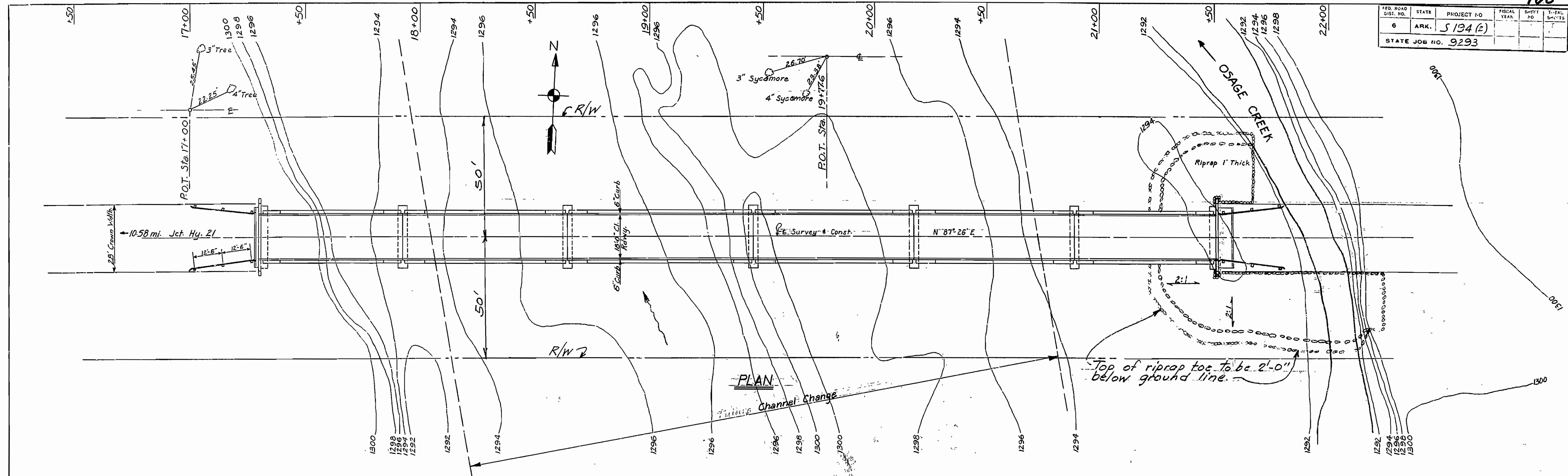
Revised - 8-29-51
 Revised - 11-8-51

SUMMARY OF QUANTITIES
 BRIDGE OVER OSAGE CREEK
 OSAGE RELOCATION
 CARROLL COUNTY
 ROUTE 68 SEC. 4

W. H. Padman
 Bridge Design Engineer

ARKANSAS STATE HIGHWAY COMMISSION
 LITTLE ROCK, ARK.
 Drawn By: F.E.D. Date: 5-22-51
 Checked by: L.P.G. Date: 8-22-51
 BRIDGE No. 2771 DRAWING No. 8052-A

FED. ROAD DIST. NO.	STATE	PROJECT NO.	FISCAL YEAR	SHEET NO.	TOTAL SHEETS
6	ARK.	5194 (2)			
STATE JOB NO. 9293					



General Notes:
 B.M. - Nail in root of 30" Elm, 60' rt. of Sta. 17+60.
 Elevation - 1299.34
 For details of deck and superstructure see Drwg. No. 8060.
 For details of substructure see Drwg. No. 8059.
 All concrete shall be poured in the dry.
 All dimensions relating to structural steel are approximate and must be verified in the field.

Revised - (Deck Elev. & Channel Chg.) - 8-29-51
 Revised - 11-8-51

**LAYOUT OF BRIDGE
 OVER OSAGE CREEK
 OVER RELOCATION
 CARROLL COUNTY
 ROUTE 68 - SEC. 4**

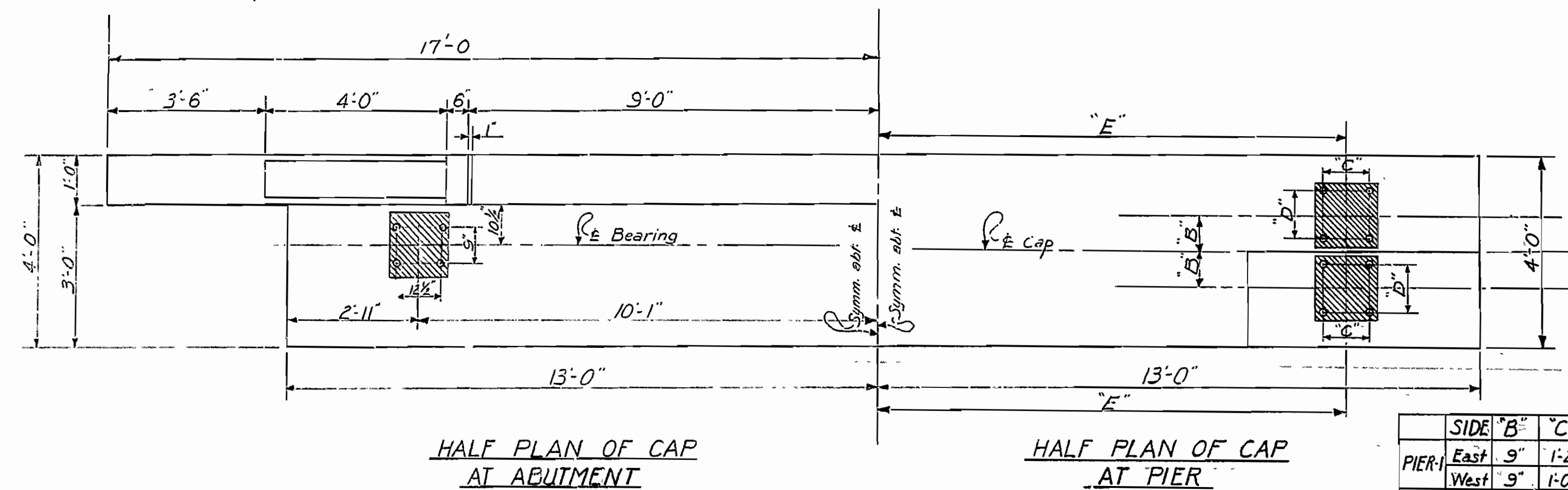
APPROVED BY
W. R. Padgett
 Bridge Design Engineer

ARKANSAS STATE HIGHWAY COMMISSION
 LITTLE ROCK, ARK.

Drawn By: B.R. Date: 8-10-51
 Traced By: Date:
 Checked By: J.K.K. Date: 8-21-51
 BRIDGE No. 277 DRAWING No. 805B

Scale: 1 in = 20 ft.

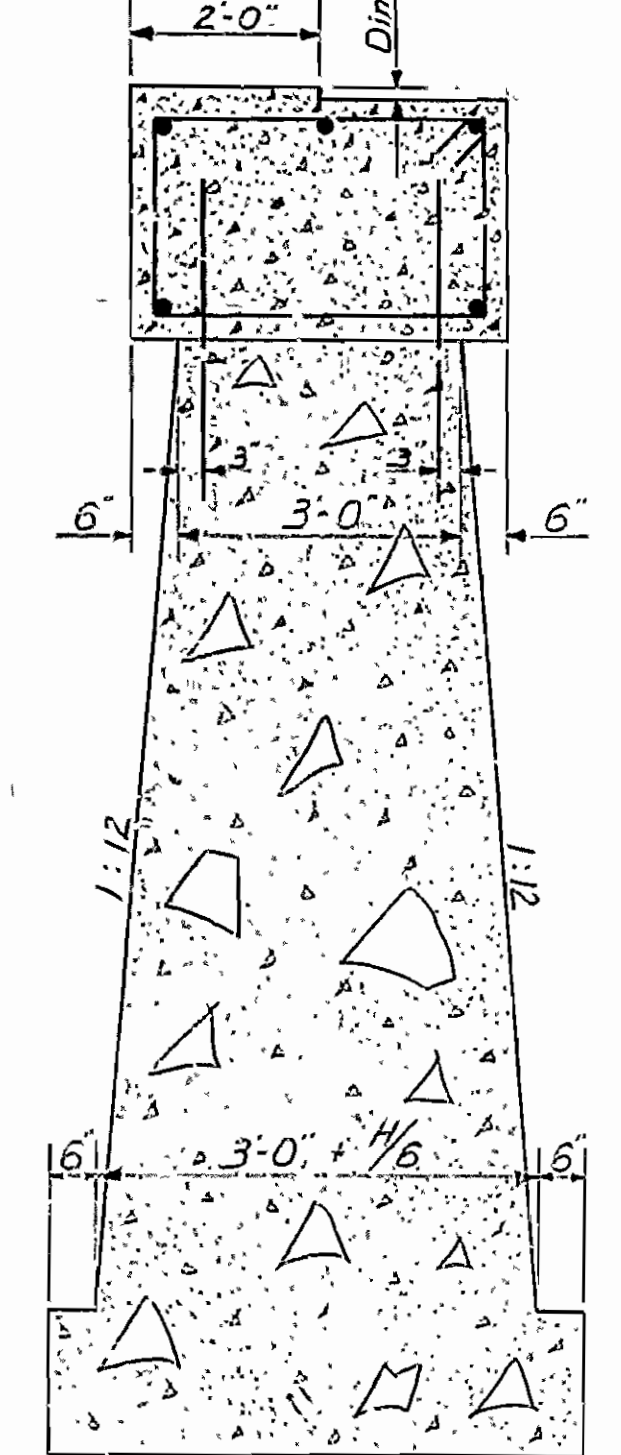
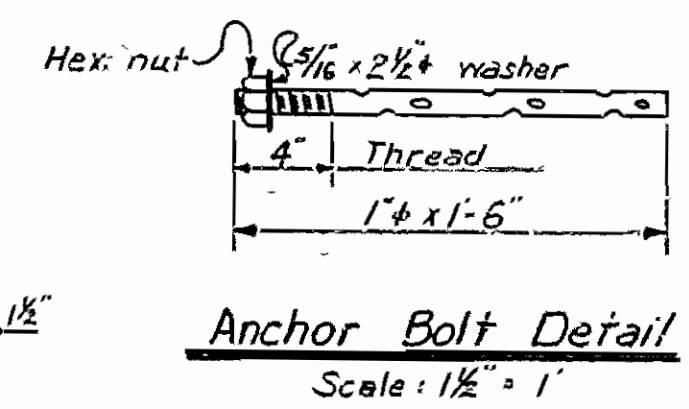
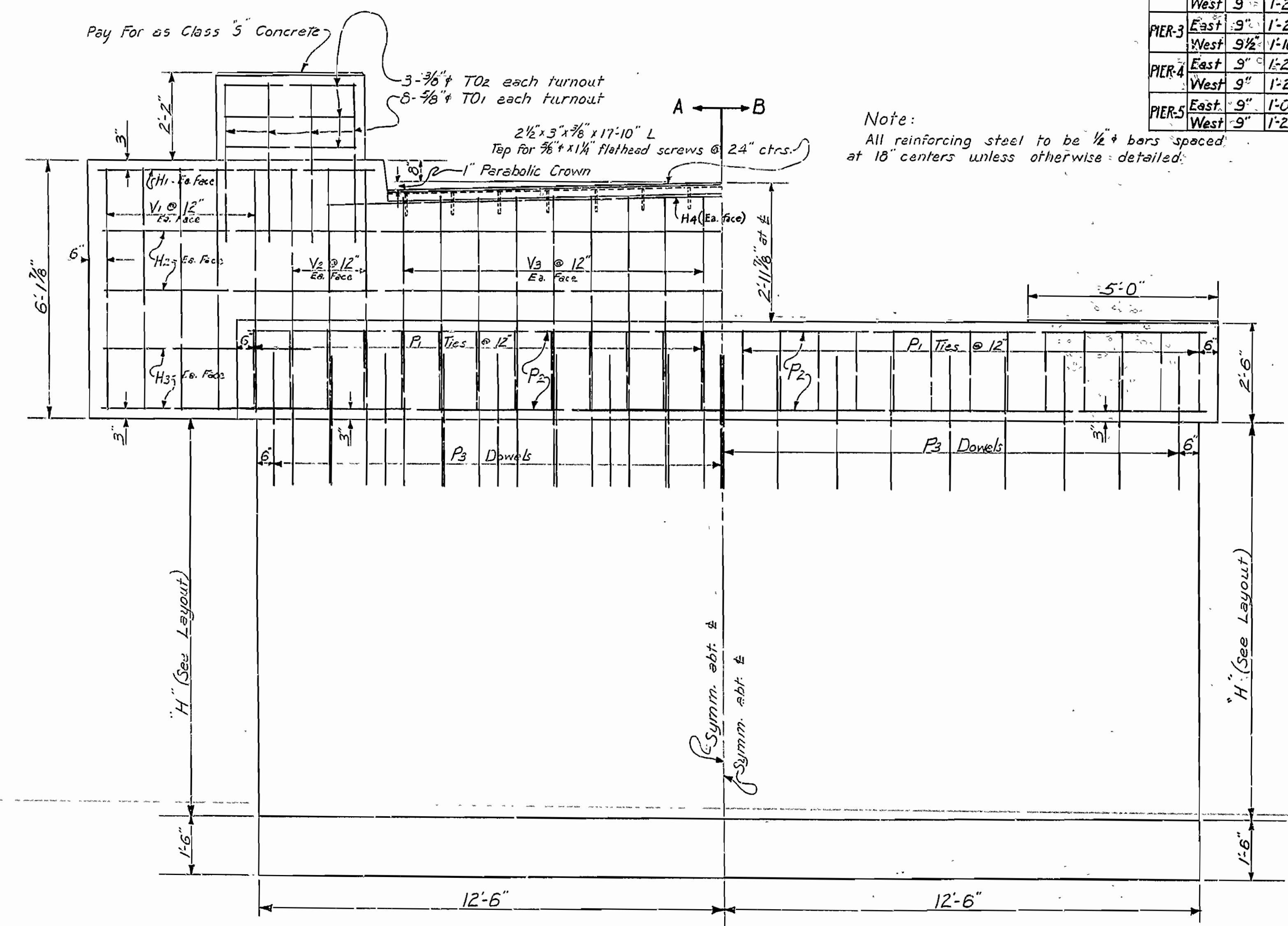
FED. ROAD DIST. NO.	STATE	PROJECT NO.	SHEET NO.	TOTAL SHEETS
6	ARK.	5194 (2)		
STATE JOB NO. 9293				



BAR LIST

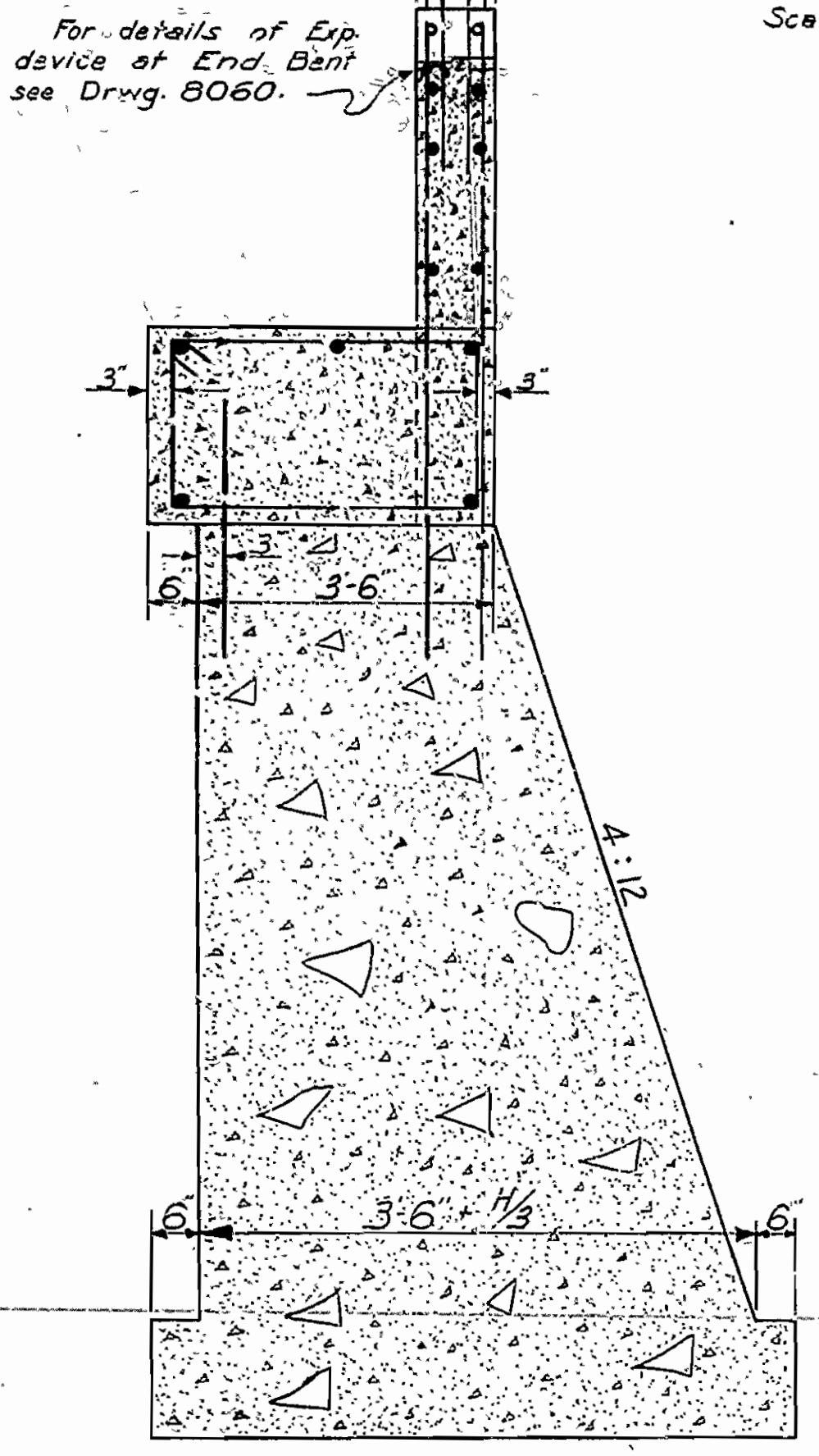
MARK	SIZE	NO. REQ'D		L'GTH	BENDING DIAGRAM
		Abut	Pier		
V1	1/2"	20		5'-9"	
V2	1/2"	12		7'-7"	
V3	1/2"	36		6'-10"	
H1	1/2"	4		7'-8"	
H2	1/2"	4		33'-8"	
H3	1/2"	8		5'-6"	
P1	1/2"	26	26	12'-1"	
P2	1/2"	5	5	25'-8"	
P3	1/2"	17	34	3'-4"	
H4	1/2"	2		21'-0"	
TO1	3/8"	16		4'-1"	
TO2	3/8"	6		9'-0"	

SIDE	"B"	"C"	"D"	"E"	
PIER-1	East	9"	1'-2"	9 3/8"	10'-1 1/2"
	West	9"	1'-0 1/2"	9"	10'-1"
PIER-2	East	9 1/2"	1'-10"	1'-0"	10'-1 3/4"
	West	9"	1'-2"	9 3/8"	10'-1 1/2"
PIER-3	East	9"	1'-2"	9 3/8"	10'-1 1/2"
	West	9 1/2"	1'-10"	1'-0"	10'-1 3/4"
PIER-4	East	9"	1'-2"	9 3/8"	10'-1 1/2"
	West	9"	1'-2"	9 3/8"	10'-1 1/2"
PIER-5	East	9"	1'-0 1/2"	9"	10'-1"
	West	9"	1'-2"	9 3/8"	10'-1 1/2"



DIMENSION "A"

Pier #1	3/8"
Pier #2	3 3/4"
Pier #3	3 3/4"
Pier #4	0"
Pier #5	3/8"



General Notes:
 Concrete in caps and wings to be Class "S". All other to be Class "B" Concrete.
 Exposed corners to have 3/4" chamfer unless otherwise noted.
 Rock excavation shall be cut to neat lines of footing below top of footing.
 Shattering of rock faces by excessive blasting will not be permitted.
 For other general notes and details of superstructure see Drwg. 8060
 Maximum bearing = 4100#/sq. in. Abutment #1
 4000#/sq. in. Piers
 7200#/sq. in. Abutment #2

Revised 11-8-51

DETAILS OF PIERS and ABUTMENTS.
 BRIDGE OVER OSAGE CREEK
 OSAGE RELOCATION
 CARROLL COUNTY
 ROUTE 68 SEC. 4

APPROVED BY

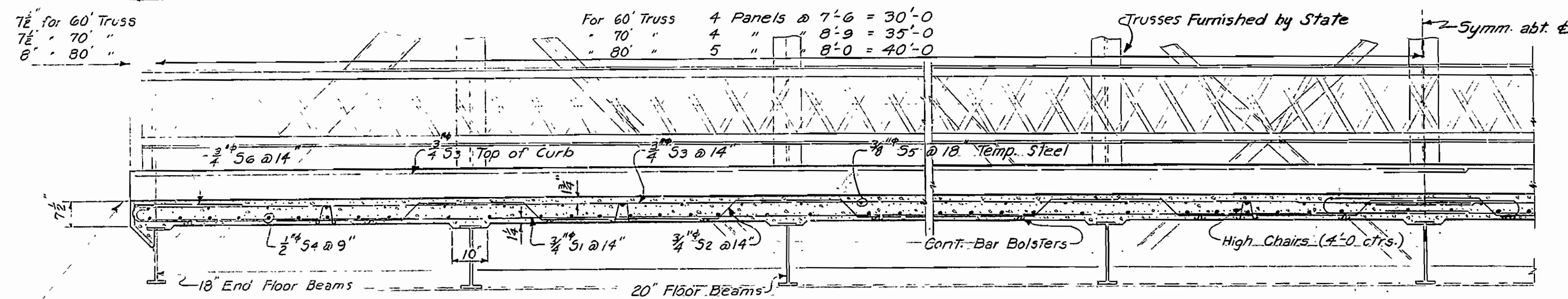
 Bridge Design Engineer

ARKANSAS STATE HIGHWAY COMMISSION
 LITTLE ROCK, ARK.

Drawn By: B.R. Date: 8-17-51
 Traced By: Date: 8-27-51
 Checked By: Date: 8-27-51
 Scale: 1/2" = 1' ft. Except as noted
 BRIDGE No. 2771 DRAWING No. 8059

FED. ROAD DIST. NO.	STATE	PROJECT NO.	FISCAL YEAR	SHEET NO.	TOTAL SHEETS
6	ARK.	S 194(2)			
STATE JOB NO. 9293					

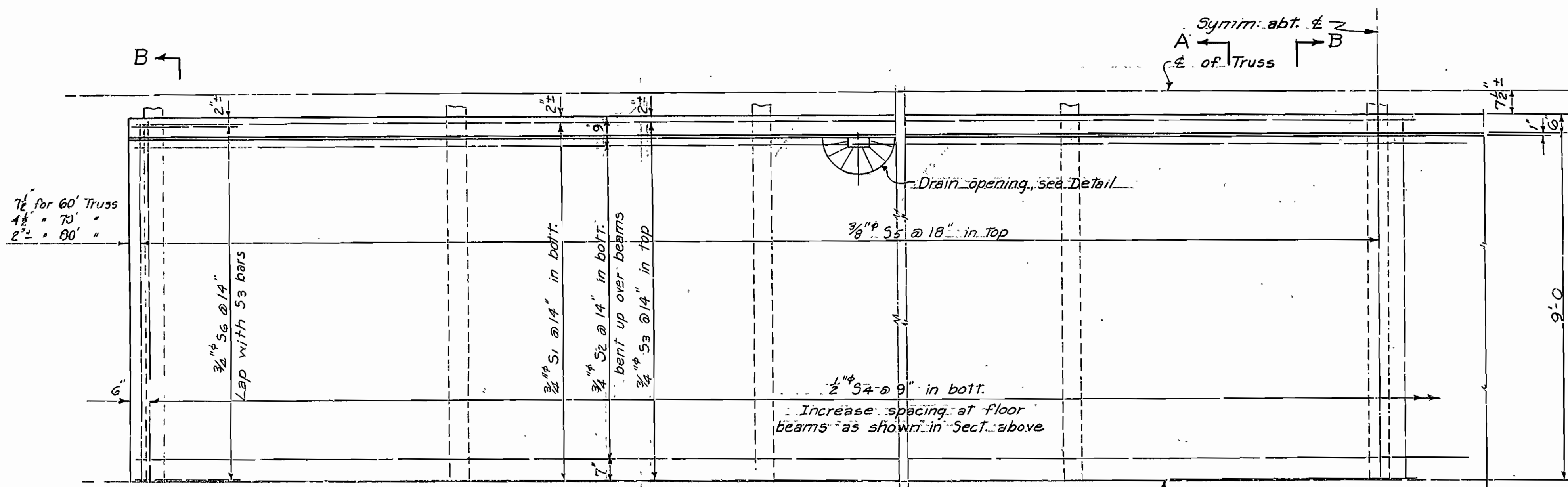
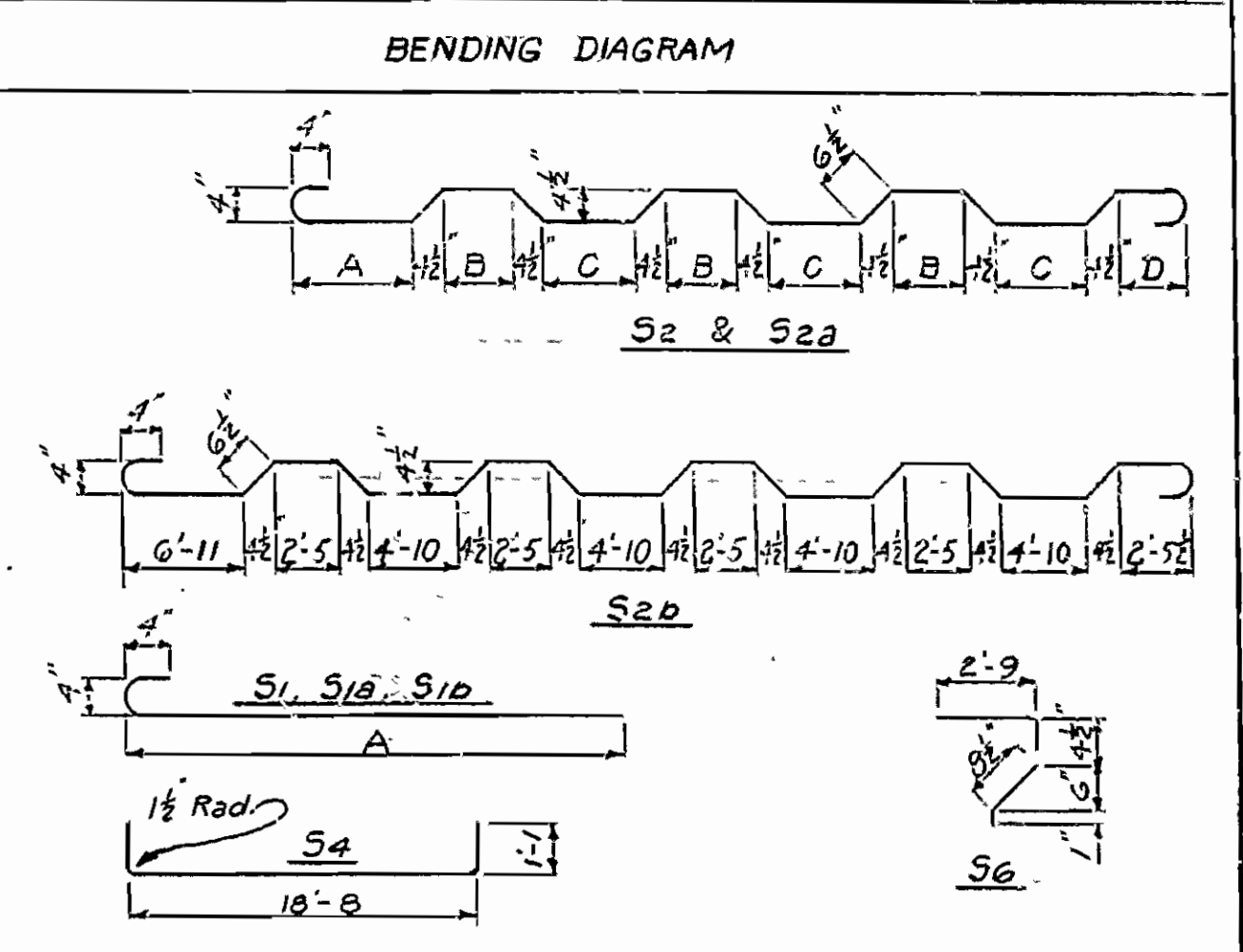
61'-3" o. to o. for 60' Truss
 71'-3" " " " 70' "
 81'-4" " " " 80' "



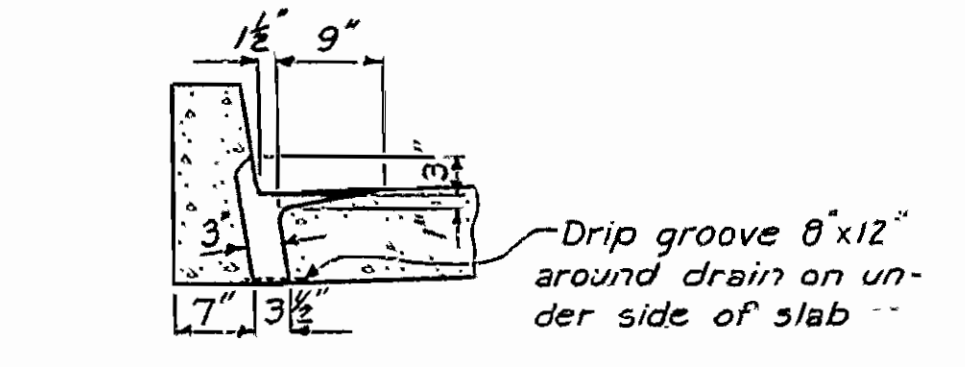
HALF LONGITUDINAL SECTION ON & RDWY.
 Scale: 1/2" = 1'-0"

LIST OF REINFORCING BARS

NO. IN ONE TRUSS TO 60' TRUSS	MARK	SIZE	LENGTH	A	B	C	D
34	S1	3/4"	32'-2"	31'-8"			
34	S1B	"	37'-2"	36'-8"			
32	S2	"	33'-11"	6'-5 1/2"	2'-3"	4'-6"	2'-5"
32	S2a	"	38'-11"	7'-5 1/2"	2'-9"	5'-3"	2'-8"
34	S3	"	31'-8"				
34	S3a	"	36'-8"				
34	S3b	"	41'-8"				
72	S4	1/2"	20'-8"				
41	S5	3/8"	18'-8"				
34	S6	3/4"	3'-11"				



QUARTER PLAN
 Scale: 1/2" = 1'-0"



GENERAL NOTES

All concrete to be Class 5. All exposed corners to be chamfered 3/4" unless otherwise noted.

Reinforcing steel to be deformed bars of grade as shown in Special Provision 803.5. Shop lists and bending diagrams must be submitted by the Contractor and approval secured before fabrication is begun.

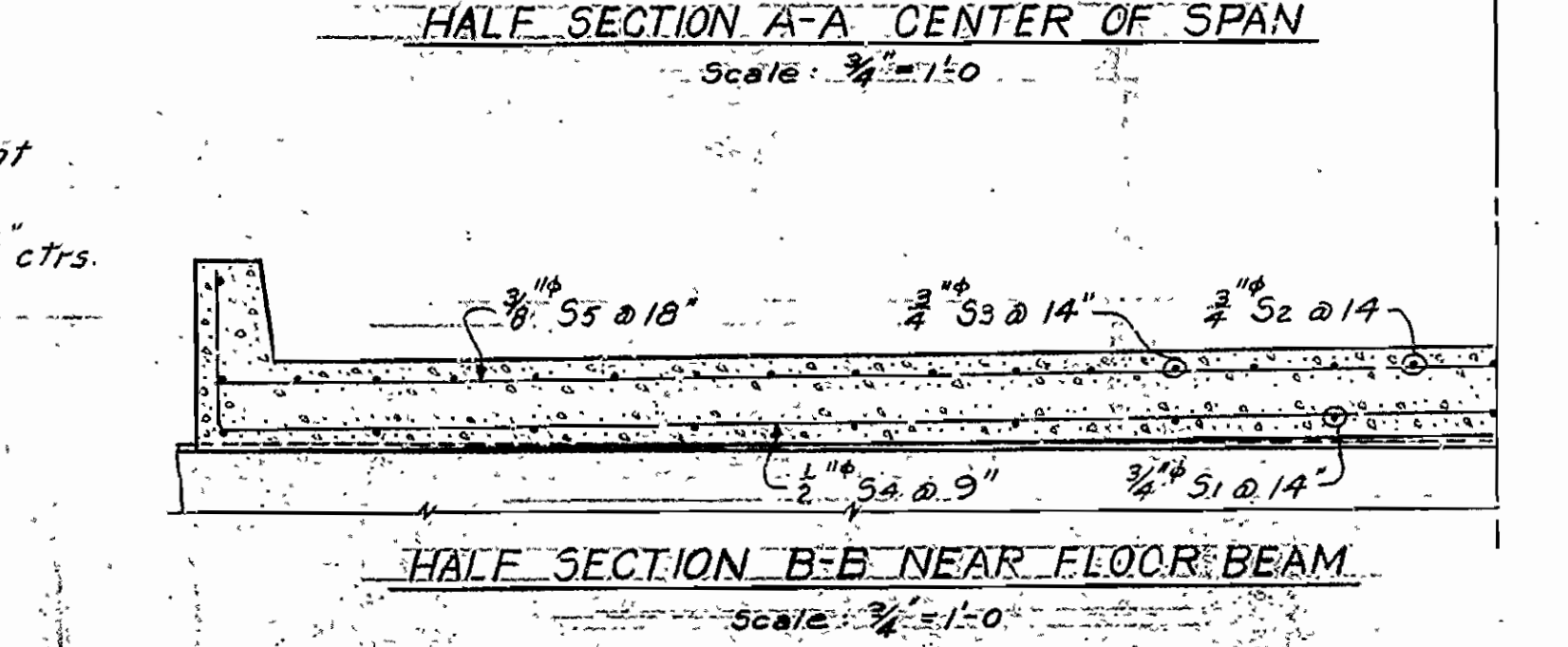
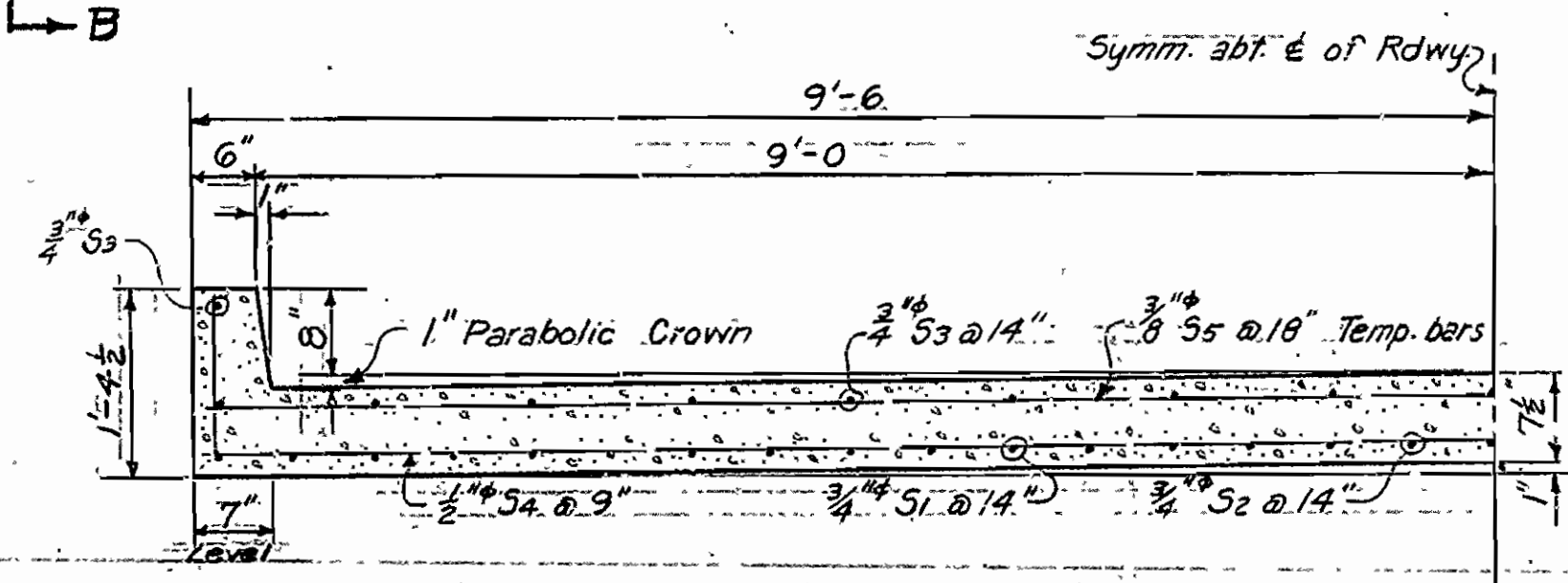
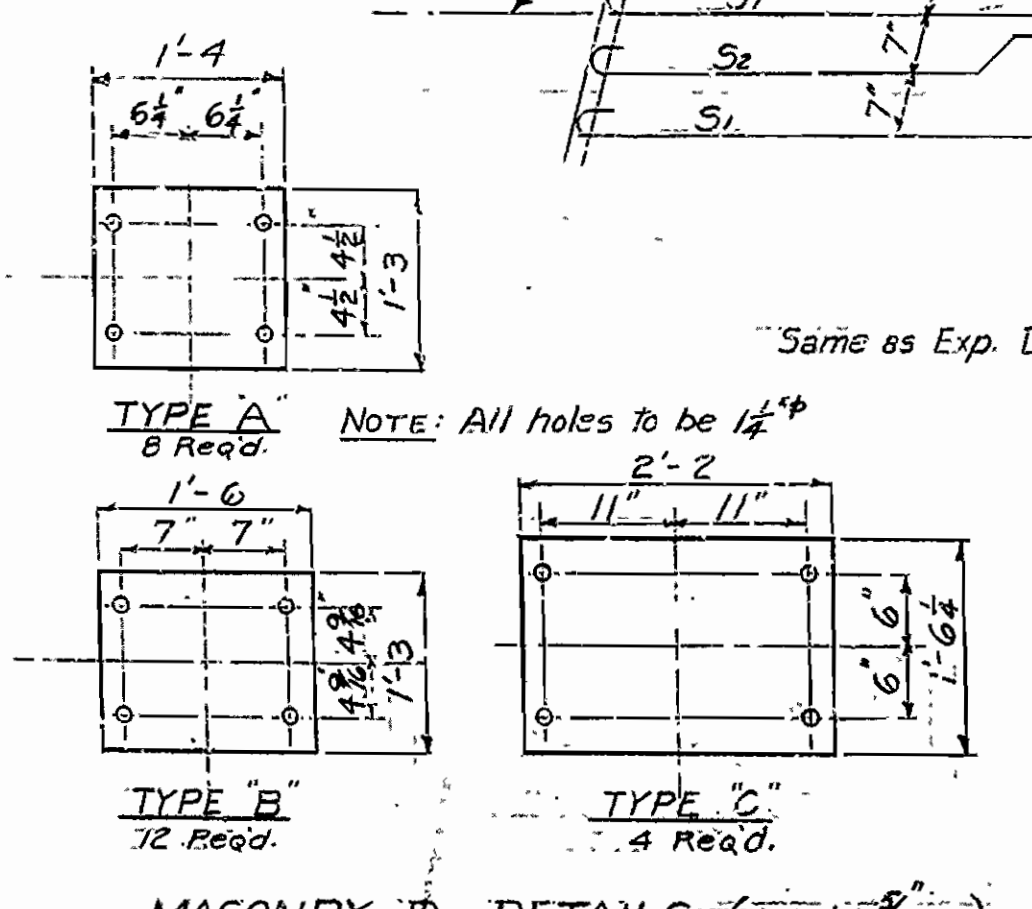
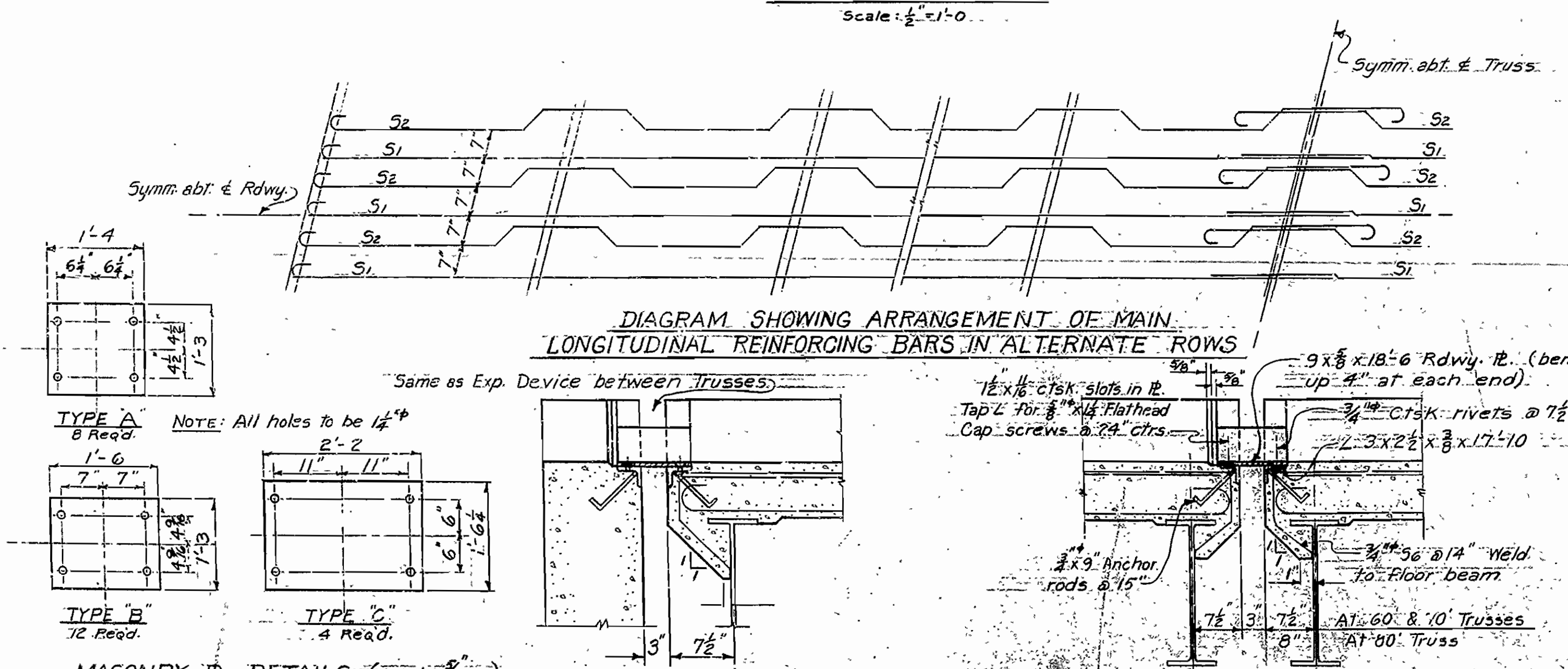
All reinforcing steel shall be accurately located in the forms and firmly held in place by means of steel wire supports, sufficient in number and size to prevent displacement during the course of construction and to keep the steel a proper distance from the forms. The wire supports will not be paid for directly but will be considered subsidiary to the item of reinforcing steel. Shop lists and bending diagrams must be submitted for approval.

All Roadway Expansion Devices to be paid for as Structural Steel in Truss Spans.

See Special Provision for Erection of Structural Steel Furnished by the State.

Specifications: Arkansas State Highway Commission Standard Specifications for Road and Bridge Construction adopted March 1, 1940.

NOTE:
 S1 and S3 bars are in same vertical plane. S1 is on & of Rdwy.



Loading H15 } AASHTO 1949 Revised
 Unit Stresses: }
 Class 5 Concrete (n=10) 1200 #/sq
 Reinforcing Steel 20000 #/sq

DETAILS OF R.C. SLAB ON TRUSS SPANS
 BRIDGE OVER OSAGE CREEK
 OSAGE RELOCATION
 CARROLL COUNTY
 ROUTE 62 SEC. 4

ARKANSAS STATE HIGHWAY COMMISSION
 LITTLE ROCK, ARK.

Drawn By: WMM Date: 8-13-51
 Traced By: JMK Date: 8-16-51
 Checked By: JMK Date: 8-16-51
 Bridge Design Engineer
 BRIDGE NO. 2771 DRAWING NO. 8060