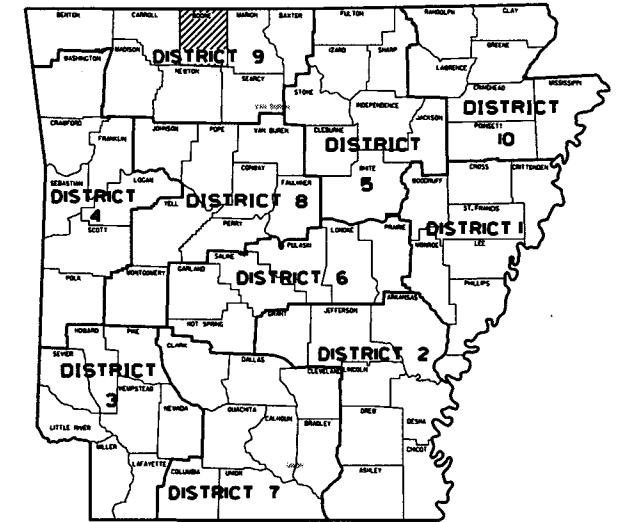


ARKANSAS DEPARTMENT OF TRANSPORTATION  
CONSTRUCTION PLANS FOR STATE HIGHWAY

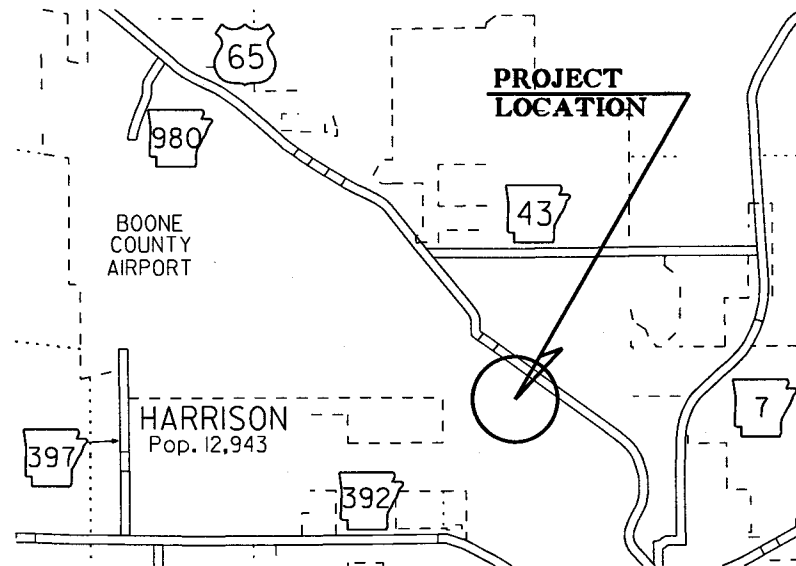
DATE REVISED	DATE FILMED	DATE REVISED	DATE FILMED	FED. RD. DIST. NO.	STATE	FED. AID PROJ. NO.	SHEET NO.	TOTAL SHEETS
				6	ARK.			
						090437	1	14

MAIN ST./SPRUCE ST. SIGNAL UPGRADE  
(HARRISON) (S)

BOONE COUNTY  
F.A.P. STPC-9191(7)  
JOB 090437



ARKANSAS HWY. DIST. 9

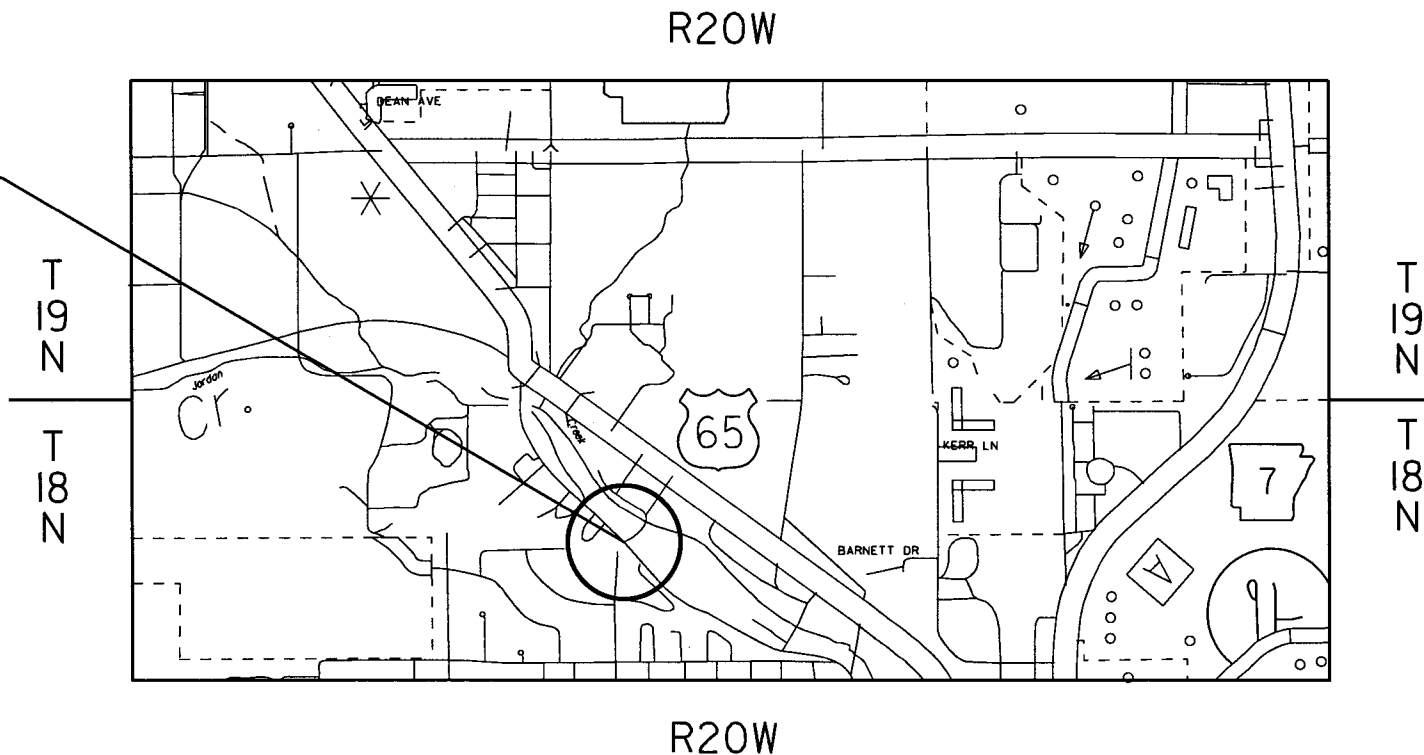


VICINITY MAP



NOT TO SCALE

PROJECT LOCATION



APPROVED



7-2-18  
DEPUTY DIRECTOR  
AND CHIEF ENGINEER

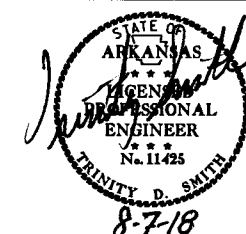
P.E. JOB 090437

PROJECT COORDINATES:

	MID-POINT
LAT.	N36° 14' 43"
LON.	W93° 06' 58"

DATE REVISED	DATE FILMED	DATE REVISED	DATE FILMED	FED. RD. DIST. NO.	STATE	FED. AID PROJ. NO.	SHEET NO.	TOTAL SHEETS
				6	ARK.			
							JOB NO.	090437
							SHEET NO.	2
							TOTAL SHEETS	14

② INDEX OF SHEETS, STANDARD DRAWINGS, AND GOVERNING SPECIFICATIONS



### INDEX OF SHEETS

SHEET NO.	TITLE
1	TITLE SHEET
2	INDEX OF SHEETS, STANDARD DRAWINGS, AND GOVERNING SPECIFICATIONS
3	MAINTENANCE OF TRAFFIC DETAIL
4	PERMANENT PAVEMENT MARKINGS DETAIL
5	QUANTITIES
6	SUMMARY OF QUANTITIES AND REVISIONS
7 - 8	SURVEY CONTROL DETAILS
9	TRAFFIC SIGNAL NOTES
10	TRAFFIC SIGNAL QUANTITIES AND SIGNS
11 - 14	SIGNALIZATION PLAN SHEETS

### GOVERNING SPECIFICATIONS

ARKANSAS STATE HIGHWAY COMMISSION STANDARD SPECIFICATIONS FOR HIGHWAY CONSTRUCTION, EDITION OF 2014, AND THE FOLLOWING SPECIAL PROVISIONS AND SUPPLEMENTAL SPECIFICATIONS:

NUMBER	TITLE
ERRATA	ERRATA FOR THE BOOK OF STANDARD SPECIFICATIONS
FHWA-1273	REQUIRED CONTRACT PROVISIONS FEDERAL-AID CONSTRUCTION CONTRACTS
FHWA-1273	SUPPLEMENT - EQUAL EMPLOYMENT OPPORTUNITY - NOTICE TO CONTRACTORS
FHWA-1273	SUPPLEMENT - SPECIFIC EQUAL EMPLOYMENT OPPORTUNITY RESPONSIBILITIES (23 U.S.C. 140)
FHWA-1273	SUPPLEMENT - EQUAL EMPLOYMENT OPPORTUNITY - GOALS AND TIMETABLES
FHWA-1273	SUPPLEMENT - EQUAL EMPLOYMENT OPPORTUNITY - FEDERAL STANDARDS
FHWA-1273	SUPPLEMENT - POSTERS AND NOTICES REQUIRED FOR FEDERAL-AID PROJECTS
FHWA-1273	SUPPLEMENT - WAGE RATE DETERMINATION
100-3	CONTRACTOR'S LICENSE
100-4	DEPARTMENT NAME CHANGE
102-2	ISSUANCE OF PROPOSALS
108-1	LIQUIDATED DAMAGES
108-2	WORK ALLOWED PRIOR TO ISSUANCE OF WORK ORDER
604-1	RETROREFLECTIVE SHEETING FOR TRAFFIC CONTROL DEVICES IN CONSTRUCTION ZONES
JOB 090437	ACTUATED CONTROLLER
JOB 090437	BIDDING REQUIREMENTS AND CONDITIONS
JOB 090437	CABINET DRAWER ASSEMBLY
JOB 090437	CARGO PREFERENCE ACT REQUIREMENTS
JOB 090437	DECORATIVE TRAFFIC SIGNALS
JOB 090437	DOCUMENTATION OF PAYMENTS MADE TO DISADVANTAGED BUSINESS ENTERPRISES
JOB 090437	EDGE CARD VIDEO PROCESSOR
JOB 090437	ELECTRICAL CONDUCTORS FOR LUMINAIRES
JOB 090437	ELECTRICAL CONDUCTORS-IN-CONDUIT
JOB 090437	LED LUMINAIRE ASSEMBLY (BUG U0 TYPE)
JOB 090437	LED TRAFFIC SIGNAL HEAD
JOB 090437	MANDATORY ELECTRONIC CONTRACT
JOB 090437	MANDATORY ELECTRONIC DOCUMENT SUBMITTAL
JOB 090437	REMOVAL OF TRAFFIC SIGNAL EQUIPMENT
JOB 090437	SERVICE POINT ASSEMBLY (TRAFFIC CONTROL DEVICES)
JOB 090437	STREET NAME SIGN (MAST ARM MOUNTED)
JOB 090437	UTILITY ADJUSTMENTS
JOB 090437	VIDEO DETECTOR (COLOR)

### ROADWAY STANDARD DRAWINGS

DRWG.NO.	TITLE	DATE
PM-1	PAVEMENT MARKING DETAILS	06-01-17
SD-5	CONTROLLER CABINET UTILITY DRAWER	09-12-13
SD-6	HEAVY DUTY PULL BOX	11-16-17
SD-8	SIGNAL HEAD PLACEMENT	12-08-16
SD-9	SERVICE POINT	11-16-17
SD-11	STEEL POLE WITH MAST ARM	11-16-17
TC-1	STANDARD TRAFFIC CONTROLS FOR HIGHWAY CONSTRUCTION	04-13-17
TC-2	STANDARD TRAFFIC CONTROLS FOR HIGHWAY CONSTRUCTION	09-02-15
TC-3	STANDARD TRAFFIC CONTROLS FOR HIGHWAY CONSTRUCTION	09-02-15
TEC-1	TEMPORARY EROSION CONTROL DEVICES	11-16-17

### GENERAL NOTES

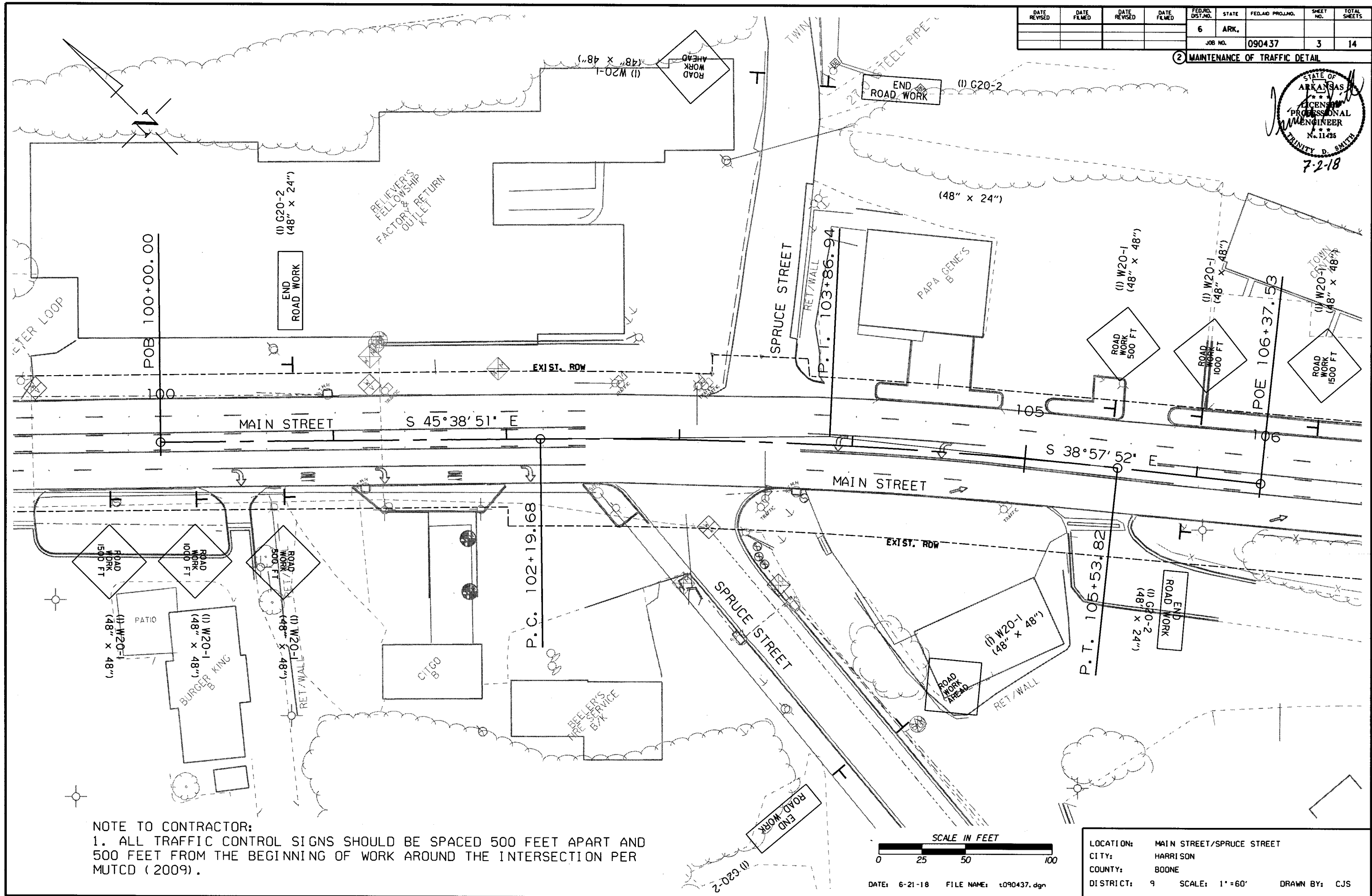
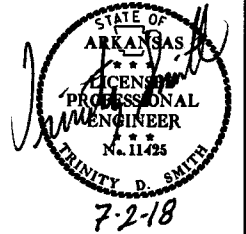
- ALL PIPE LINES, POWER, TELEPHONE, AND TELEGRAPH LINES TO BE MOVED OR LOWERED BY THE RESPECTIVE OWNERS AS PER AGREEMENT WITH SUCH OWNERS.
- ANY EQUIPMENT OR APPURTENANCE THAT INTERFERES WITH THE PROPOSED CONSTRUCTION AND WHICH MAY BE THE PROPERTY OF UTILITY SERVICE ORGANIZATIONS SHALL BE MOVED BY THE OWNERS UNLESS OTHERWISE PROVIDED.
- ALL LAND MONUMENTS LOCATED WITHIN THE CONSTRUCTION AREA SHALL BE PROTECTED IN ACCORDANCE WITH SECTION 107.12 OF THE STANDARD SPECIFICATIONS.

LOCATION: MAIN STREET/SPRUCE STREET  
 CITY: HARRISON  
 COUNTY: BOONE  
 DISTRICT: 9 SCALE: N/A DRAWN BY: CJS

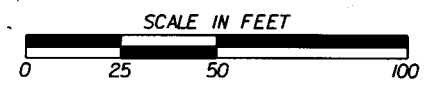
DATE: 8-6-18 FILE NAME: t090437.dgn

DATE REVISED	DATE FILMED	DATE REVISED	DATE FILMED	FED. DIST. NO.	STATE	FED. AID PROJ. NO.	SHEET NO.	TOTAL SHEETS
				6	ARK.			
				JOB NO.	090437		3	14

2 MAINTENANCE OF TRAFFIC DETAIL



NOTE TO CONTRACTOR:  
 1. ALL TRAFFIC CONTROL SIGNS SHOULD BE SPACED 500 FEET APART AND 500 FEET FROM THE BEGINNING OF WORK AROUND THE INTERSECTION PER MUTCD (2009).



DATE: 6-21-18 FILE NAME: t090437.dgn

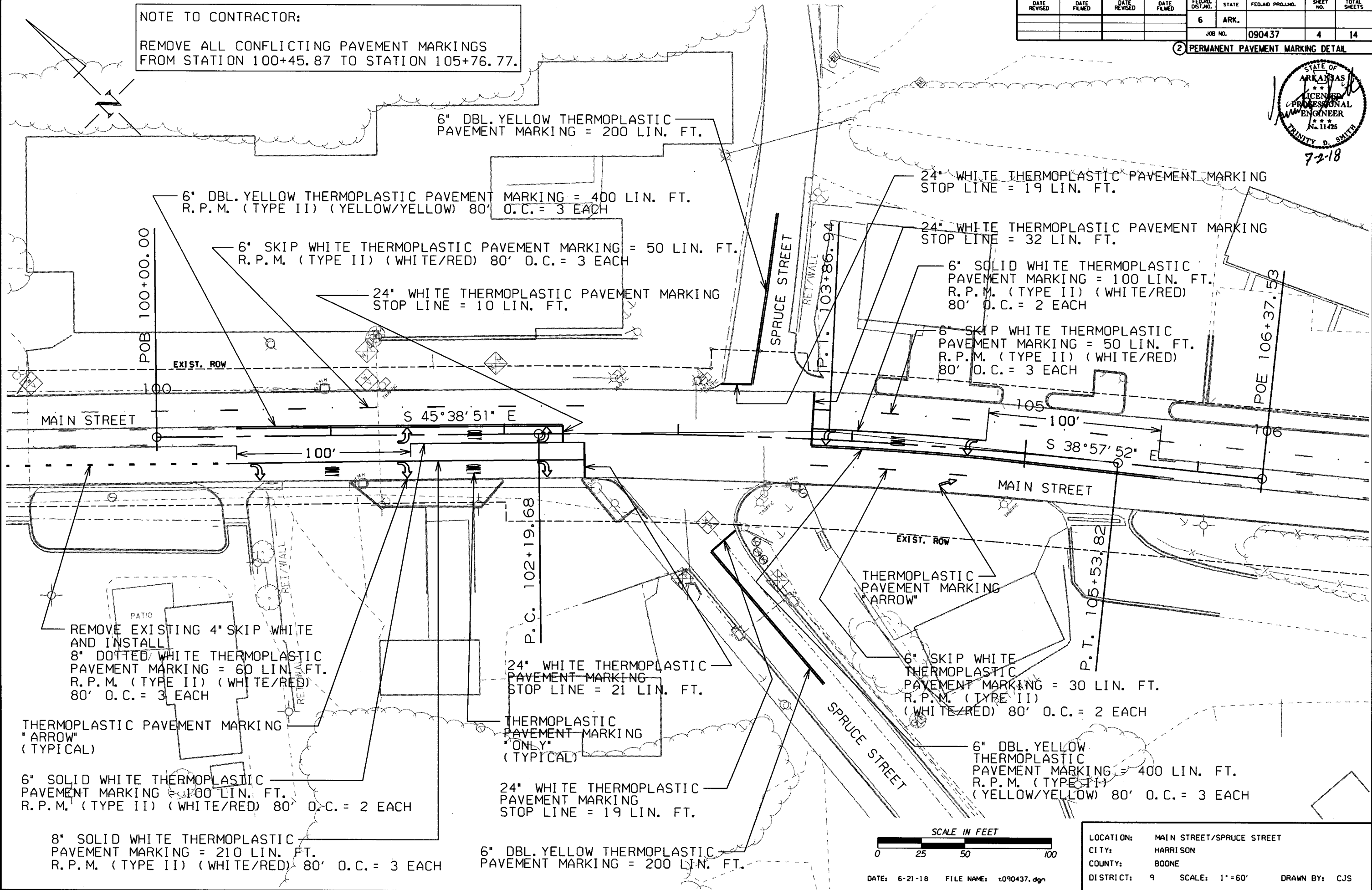
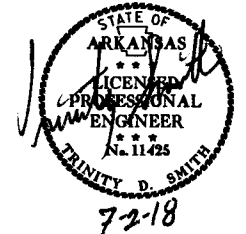
LOCATION:	MAIN STREET/SPRUCE STREET
CITY:	HARRISON
COUNTY:	BOONE
DISTRICT:	9
SCALE:	1" = 60'
DRAWN BY:	CJS

T090437.DGN 6/21/2018

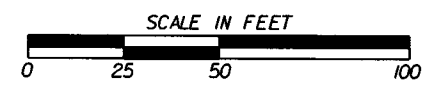
NOTE TO CONTRACTOR:  
 REMOVE ALL CONFLICTING PAVEMENT MARKINGS  
 FROM STATION 100+45.87 TO STATION 105+76.77.

DATE REVISED	DATE FILED	DATE REVISED	DATE FILED	FED. PROJ. DIST. NO.	STATE	FED. AID PROJ. NO.	SHEET NO.	TOTAL SHEETS
				6	ARK.			
				JOB NO.	090437		4	14

2 PERMANENT PAVEMENT MARKING DETAIL



T090437.DGN 6/21/2018

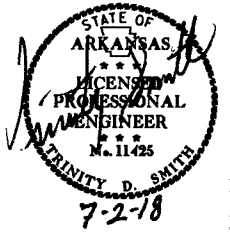


DATE: 6-21-18 FILE NAME: t090437.dgn

LOCATION: MAIN STREET/SPRUCE STREET  
 CITY: HARRISON  
 COUNTY: BOONE  
 DISTRICT: 9 SCALE: 1"=60' DRAWN BY: CJS

DATE REVISED	DATE FILMED	DATE REVISED	DATE FILMED	FED. PROJ. DIST. NO.	STATE	FED. AID PROJ. NO.	SHEET NO.	TOTAL SHEETS
				6	ARK.		5	14
				JOB NO.		090437		

② QUANTITIES



**CONSTRUCTION PAVEMENT MARKINGS AND PERMANENT PAVEMENT MARKINGS**

DESCRIPTION	END OF JOB LIN. FT. - EACH	REMOVAL OF PERMANENT PAVEMENT MARKINGS LIN. FT.	REMOVAL OF PERMANENT PAVEMENT MARKINGS		RAISED PAVEMENT MARKERS		THERMOPLASTIC PAVEMENT MARKING					
			WORDS	ARROWS	TYPE II (WHITE/RED)	TYPE II (YEL/YEL)	6"		8"	24"	WORDS	ARROWS
							WHITE	YELLOW	WHITE	WHITE		
REMOVAL OF PERMANENT PAVEMENT MARKINGS	1535	1535										
REMOVAL OF PERMANENT PAVEMENT MARKINGS (WORDS)	2		2									
REMOVAL OF PERMANENT PAVEMENT MARKINGS (ARROWS)	6			6								
RAISED PAVEMENT MARKERS TYPE II (WHITE/RED)	18				18							
RAISED PAVEMENT MARKERS TYPE II (YEL/YEL)	6					6						
THERMOPLASTIC PAVEMENT MARKING WHITE (6")	330						330					
THERMOPLASTIC PAVEMENT MARKING YELLOW (6")	1200							1200				
THERMOPLASTIC PAVEMENT MARKING WHITE (8")	270								270			
THERMOPLASTIC PAVEMENT MARKING WHITE (24")	101									101		
THERMOPLASTIC PAVEMENT MARKING (WORDS)	4										4	
THERMOPLASTIC PAVEMENT MARKING (ARROWS)	8											8
<b>TOTALS:</b>		1535	2	6	18	6	330	1200	270	101	4	8

NOTE: THIS IS A HIGH TRAFFIC VOLUME ROAD AS DEFINED IN SECTION 604.03, STANDARD SPECIFICATIONS FOR HIGHWAY CONSTRUCTION.

**ADVANCE WARNING SIGNS AND DEVICES**

SIGN NUMBER	DESCRIPTION	SIGN SIZE	MAXIMUM NUMBER REQUIRED	TOTAL SIGNS REQUIRED	
				NO.	SQ. FT.
W20-1	ROAD WORK 1500 FT.	48"x48"	2	2	32.0
W20-1	ROAD WORK 1000 FT.	48"x48"	2	2	32.0
W20-1	ROAD WORK 500 FT.	48"x48"	2	2	32.0
W20-1	ROAD WORK AHEAD	48"x48"	2	2	32.0
G20-2	END ROAD WORK	48"x24"	4	4	32.0
<b>TOTAL:</b>					160.0

NOTE: THIS IS A HIGH TRAFFIC VOLUME ROAD AS DEFINED IN SECTION 604.03, STANDARD SPECIFICATIONS FOR HIGHWAY CONSTRUCTION.

**EROSION CONTROL**

STATION	STATION	LOCATION	SILT FENCE	*SEDIMENT REMOVAL & DISPOSAL
			(E-11) LIN. FT.	CU. YD.
*ENTIRE PROJECT TO BE USED IF AND WHERE DIRECTED BY THE ENGINEER.			50	2
<b>TOTALS:</b>			50	2

\*QUANTITIES ESTIMATED.  
SEE SECTION 104.03 OF THE STD. SPECS.

T090437.DGN 6/21/2018

LOCATION: MAIN STREET/SPRUCE STREET  
CITY: HARRISON  
COUNTY: BOONE  
DISTRICT: 9 SCALE: N/A DRAWN BY: CJS

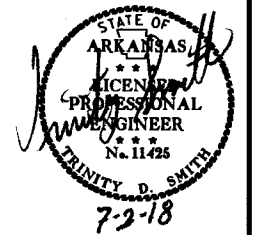
DATE: 6-21-18 FILE NAME: t090437.dgn

DATE REVISED	DATE FILMED	DATE REVISED	DATE FILMED	FED. PROJ. DIST. NO.	STATE	FED. PROJ. NO.	SHEET NO.	TOTAL SHEETS
				6	ARK.			
				JOB NO.	090437		6	14

**SUMMARY OF QUANTITIES**

ITEM NUMBER	ITEM	QUANTITY	UNIT
601	MOBILIZATION	1.00	LUMP SUM
603	MAINTENANCE OF TRAFFIC	1.00	LUMP SUM
SS & 604	SIGNS	160	SQ. FT.
604	REMOVAL OF PERMANENT PAVEMENT MARKINGS	1535	LIN. FT.
604	REMOVAL OF PERMANENT PAVEMENT MARKINGS (WORDS)	2	EACH
604	REMOVAL OF PERMANENT PAVEMENT MARKINGS (ARROWS)	6	EACH
621	SILT FENCE	50	LIN. FT.
621	SEDIMENT REMOVAL AND DISPOSAL	2	CU. YD.
SP & 701	ACTUATED CONTROLLER TS2-TYPE 2 (8 PHASES)	1	EACH
SP & 706	TRAFFIC SIGNAL HEAD, LED, (3 SECTION, 1 WAY)	8	EACH
SP & 706	TRAFFIC SIGNAL HEAD, LED, (4 SECTION, 1 WAY)	2	EACH
708	TRAFFIC SIGNAL CABLE (5C/14 A.W.G.)	477	LIN. FT.
708	TRAFFIC SIGNAL CABLE (7C/14 A.W.G.)	98	LIN. FT.
708	TRAFFIC SIGNAL CABLE (12C/14 A.W.G.)	218	LIN. FT.
708	TRAFFIC SIGNAL CABLE (20C/14 A.W.G.)	218	LIN. FT.
SP	ELECTRICAL CONDUCTORS-IN-CONDUIT (1C/8 A.W.G., E.G.C.)	270	LIN. FT.
SP	ELECTRICAL CONDUCTORS-IN-CONDUIT (1C/12 A.W.G., E.G.C.)	122	LIN. FT.
SP	ELECTRICAL CONDUCTORS-IN-CONDUIT (2C/6 A.W.G.)	31	LIN. FT.
SP	ELECTRICAL CONDUCTORS FOR LUMINAIRES	363	LIN. FT.
709	GALVANIZED STEEL CONDUIT (2")	31	LIN. FT.
710	NON-METALLIC CONDUIT (3")	215	LIN. FT.
711	CONCRETE PULL BOX (TYPE 1 HD)	1	EACH
711	CONCRETE PULL BOX (TYPE 2 HD)	3	EACH
SP & 714	TRAFFIC SIGNAL MAST ARM AND POLE WITH FOUNDATION (38'-20')	1	EACH
SP & 714	TRAFFIC SIGNAL MAST ARM AND POLE WITH FOUNDATION (44'-38')	1	EACH
SP	LED LUMINAIRE ASSEMBLY	2	EACH
SP	SERVICE POINT ASSEMBLY (2 CIRCUITS)	1	EACH
SP	REMOVAL OF TRAFFIC SIGNAL EQUIPMENT	1.00	LUMP SUM
719	THERMOPLASTIC PAVEMENT MARKING WHITE (6")	330	LIN. FT.
719	THERMOPLASTIC PAVEMENT MARKING WHITE (8")	270	LIN. FT.
719	THERMOPLASTIC PAVEMENT MARKING WHITE (24")	101	LIN. FT.
719	THERMOPLASTIC PAVEMENT MARKING YELLOW (6")	1200	LIN. FT.
719	THERMOPLASTIC PAVEMENT MARKING (WORDS)	4	EACH
719	THERMOPLASTIC PAVEMENT MARKING (ARROWS)	8	EACH
721	RAISED PAVEMENT MARKERS (TYPE II)	24	EACH
SP	18" STREET NAME SIGN	4	EACH
* SP & 733	VIDEO DETECTOR (CLR)	7	EACH
733	VIDEO CABLE	1036	LIN. FT.
733	VIDEO MONITOR (CLR)	1	EACH
* SP & 733	VIDEO PROCESSOR, EDGE CARD (2 CAMERA)	4	EACH
SP & 733	VEHICLE DETECTOR RACK (16 CHANNEL)	1	EACH

2 SUMMARY OF QUANTITIES AND REVISIONS



\* ONE SPARE VIDEO DETECTOR (CLR) AND ONE SPARE VIDEO PROCESSOR, EDGE CARD (2 CAMERA) SHALL BE SUPPLIED.

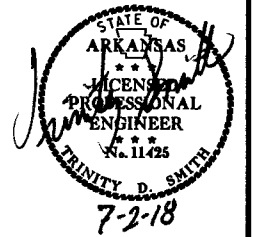
**REVISIONS**

DATE	ITEM	SHEET NUMBER

LOCATION: MAIN STREET/SPRUCE STREET  
 CITY: HARRISON  
 COUNTY: BOONE  
 DISTRICT: 9 SCALE: N/A DRAWN BY: CJS

DATE REVISED	DATE FILMED	DATE REVISED	DATE FILMED	FED. PROJ. DIST. NO.	STATE	FED. PROJ. NO.	SHEET NO.	TOTAL SHEETS
				6	ARK.			
				JOB NO.	090437		7	14

2 SURVEY CONTROL DETAILS



SURVEY CONTROL COORDINATES

Project Name: 090437  
Date: 8/18/2015  
Coordinate System: Arkansas State Plane Coordinates  
Based on AHTD GPS PTS : 050408-050409  
Based on NGS PTS : H 36 & A 194  
Projected to Ground Coordinates  
Units: U.S. Survey Foot

COORDINATES LISTED BELOW ARE GROUND (Localized) COORDINATES !!!!

Point No.	Northing	SY	Easting	SX	Elevation	SZ	Feature Code	Point Description
1	697359.2804	0.0470	983729.2236	0.0330	1113.56	0.005	CTL	PD:STD AHTD MON. STAMPED PN:1
2	697815.3442	0.0390	983771.4823	0.0290	1087.40	0.013	CTL	PD:STD AHTD MON. STAMPED PN:2
3	697652.6531	0.0460	983734.4825	0.0330	1089.84	0.013	CTL	PD:STD AHTD MON. STAMPED PN:3
4	697550.0376	0.0320	983459.8325	0.0260	1106.27	0.006	CTL	PD:STD AHTD MON. STAMPED PN:4
5	697280.7951	0.0310	983439.5553	0.0250	1132.35	0.009	CTL	PD:STD AHTD MON. STAMPED PN:5
6	697153.6231	0.0340	983428.2117	0.0270	1151.73	0.011	CTL	PD:STD AHTD MON. STAMPED PN:6
7	697851.8697	0.0330	983256.3768	0.0280	1104.05	0.013	CTL	PD:STD AHTD MON. STAMPED PN:7
100	691822.5828	0.0000	985900.3779	0.0000	1052.24	0.000	GPS	PD:AHTD GPS MON 050408
101	711995.0045	0.0000	968433.2382	0.0000	1217.63	0.000	GPS	PD:AHTD GPS MON 050409
900	-99999.0000	30.0000	-99999.0000	30.0000	1115.25	0.008	TBM	PD:CHIS SQUARE CONC CURB
901	-99999.0000	30.0000	-99999.0000	30.0000	1110.26	0.011	TBM	PD:CHIS SQUARE IN CONCRETE BR, NW COR OF BR (DRY JORDAN)
950	697.0363	10.0000	983.0511	10.0000	1060.14	0.011	BM	PD:NGS BM A 194 PD:BENCH MARK DISK SET IN
951	692.0360	10.0000	985.0512	10.0000	1060.14	0.011	BM	PD:NGS BM H 36 PD:BENCH MARK DISK SET IN

MAIN ST.

POINT NO.	TYPE	STATION	NORTHING	EASTING
8000	POB	100+00.00	697767.0304	983297.6624
8001	PC	102+19.68	697613.4594	983454.7437
8003	PT	105+53.82	697366.4790	983679.5256
8004	POE	106+37.53	697301.3972	983732.1611

\*Standard Primary Control Monument - Rebar and Cap - Standard - 5/8"x 24" Rebar with 2" Aluminum Cap stamped: "[include all common information here]" plus other markings indicated in the point description of the individual point. AHTD monuments will be stamped "Arkansas Hwy & Trans Dept" with "PN:###" & "Job#####". Monuments that are set by Consultants will be stamped "Arkansas Hwy & Trans Dept" with "PN:###", "Job#####", & "PS#####". The consultant Professional Surveyor in charge will stamp his/her PS license number on the cap.

\*\*Standard GPS Control Point Monument - 5/8" x 48" Rebar with 2.5" Aluminum Cap stamped: "[include all common information here]" plus other markings indicated in the point description of the individual point. These monuments will be stamped "Ark. State Hwy Trans. Dept.", "GPS Survey", & "Point No. #####".

SX, SY, SZ - Represents the standard error estimate of the coordinate values of each point at the 67% confidence level (one sigma) based on the least squares analysis of the control network. See the AASHTO SDMS Technical Data Guide data tag definition for SX, SY, and SZ for additional information. These values shall be used when control points are added and the entire network is reprocessed using least square analysis. A value of 0.001 is defined as fixed (no adjustment) in the least square analysis process. A value of 30 is defined as location by handheld GPS device or scaled from USGS Quadmap.

Reference Control points (1500 series) shall be used to re-establish horizontal datum if the primary control has been destroyed. These reference control points shall not be used for vertical control unless the elevation has been established from the project datum with 3-wire level techniques.

All additional project control shall be occupied, measured, and adjusted with direct survey ties to at least two of the control points listed in the table above. New survey control shall not be independent of the survey control listed above. This includes horizontal coordinates and elevations.

Positional Accuracy:	Horizontal - GPS (1.0 cm ± 1PPM)	PN: 100-101
	Horizontal - Primary (2.0cm ± 20PPM):	PN:1-7
	Horizontal - Secondary (3 cm ± 50PPM):	PN:N/A
	Vertical - NGS 1st Order (±4mm x vdist in km)	PN:950 & 951
	Vertical - NGS 2nd Order (±6mm x vdist in km)	PN:N/A
	Vertical - NGS 3rd Order (±8mm x vdist in km)	PN:1-951

Horizontal Datum: NAD 1983 (1997) State Plane Zone: 0301 - North Zone  
The adjustment year is based on metadata in the SDMS Control file  
A project CAF of: 0.999947988 has been used to compute the above coordinates.  
The project CAF shall have a minimum precision of 9 digits right of the decimal.  
This CAF is intended for use within the project limits only.  
Grid Distance = Ground Distance X CAF  
If Coordinates are listed as Ground:  
To compute Grid Coordinates, multiply the Ground Coordinates by CAF about the origin of X=0 & Y=0  
If Coordinates are listed as Grid:  
To compute Ground Coordinates, divide the Grid Coordinates by CAF about the origin of X=0 & Y=0

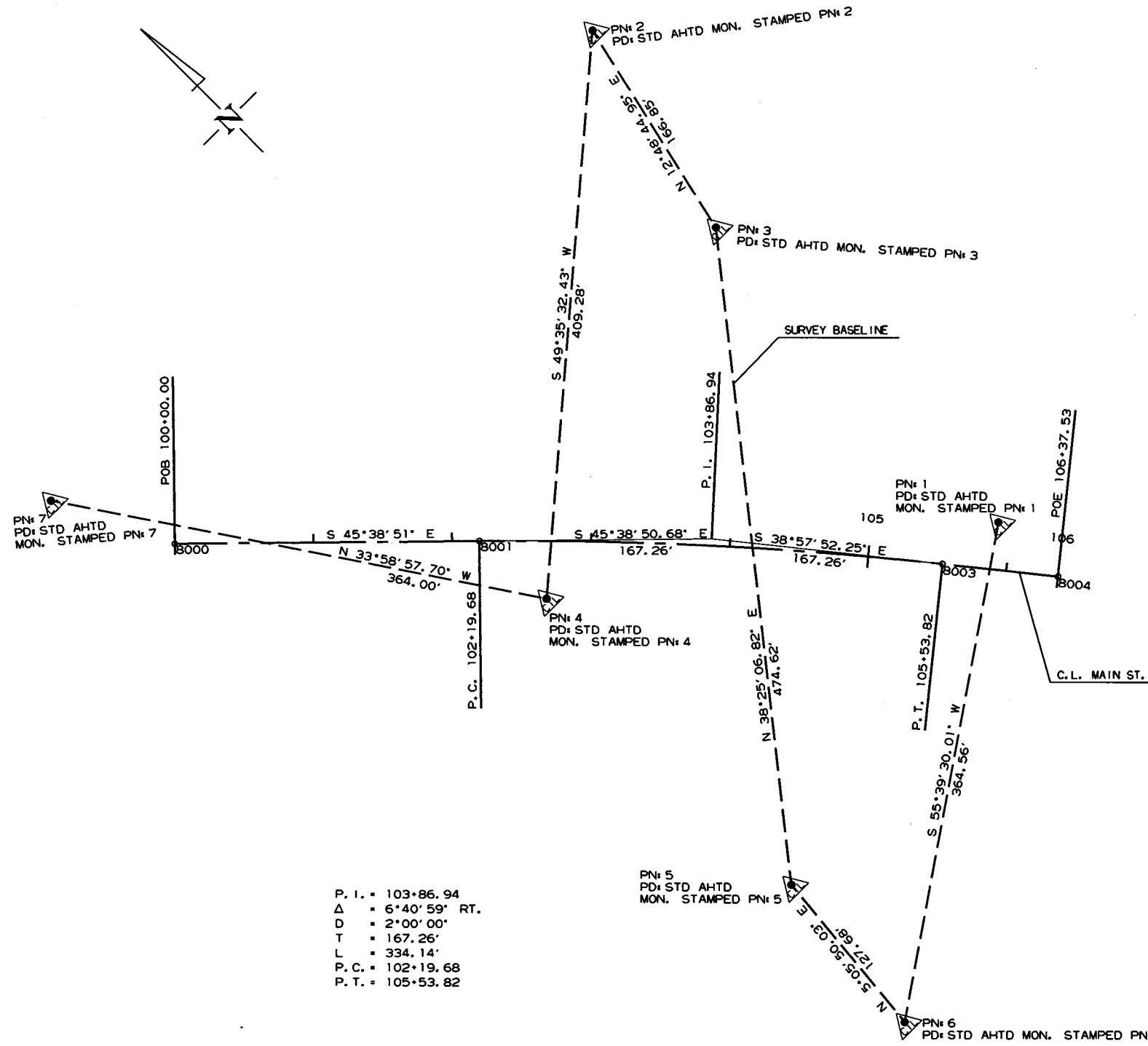
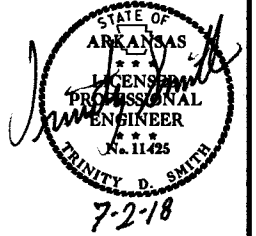
Vertical Datum: NAVD 1988 based NGS BM: H 36 & A 194  
A project Elevation Factor of: 0.9999470152 has been computed and incorporated in the above CAF.  
This is based on the average elevation of the project: 1107.76 Feet  
3-Wire Leveling techniques have been used to establish elevations on  
Points: 1-7, 100,101, 900-951 From NGS BM: H 36-A 194

Basis of Bearing: Grid Bearings based on AHTD GPS points: 050408-050409  
Convergence Angle is: 00°38'58" Left at PN: 7  
LT: 36-14-43 N LG: 93-06-58 W  
Grid Azimuth = Astronomical Azimuth - Convergence Angle

LOCATION: MAIN STREET/SPRUCE STREET  
CITY: HARRISON  
COUNTY: BOONE  
DISTRICT: 9 SCALE: N/A DRAWN BY: CJS

DATE REVISED	DATE FILMED	DATE REVISED	DATE FILMED	FED. RD. DIST. NO.	STATE	FED. AID PROJ. NO.	SHEET NO.	TOTAL SHEETS
				6	ARK.			
				JOB NO.	090437		8	14

② SURVEY CONTROL DETAILS



P. I. = 103+86.94  
 Δ = 6°40'59" RT.  
 D = 2°00'00"  
 T = 167.26'  
 L = 334.14'  
 P. C. = 102+19.68  
 P. T. = 105+53.82

LOCATION: MAIN STREET/SPRUCE STREET  
 CITY: HARRISON  
 COUNTY: BOONE  
 DISTRICT: 9 SCALE: N/A DRAWN BY: CJS

DATE: 6-21-18 FILE NAME: t090437.dgn

T090437.DGN 6/21/2018