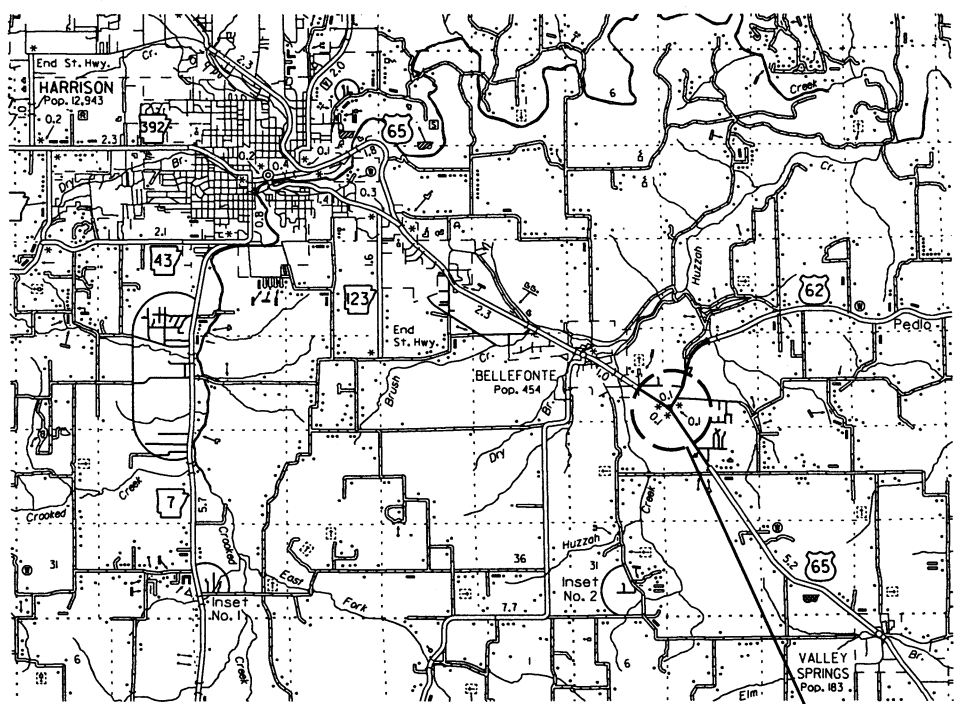


DATE REVISED	DATE FILMED	DATE REVISED	DATE FILMED	FED. RD. DIST. NO.	STATE	FED. AID PROJ. NO.	SHEET NO.	TOTAL SHEETS
				6	ARK.			
				JOB NO.	090519		1	19

② HWY. 65 & HWY. 62 SIGNAL (BOONE CO.) (S)



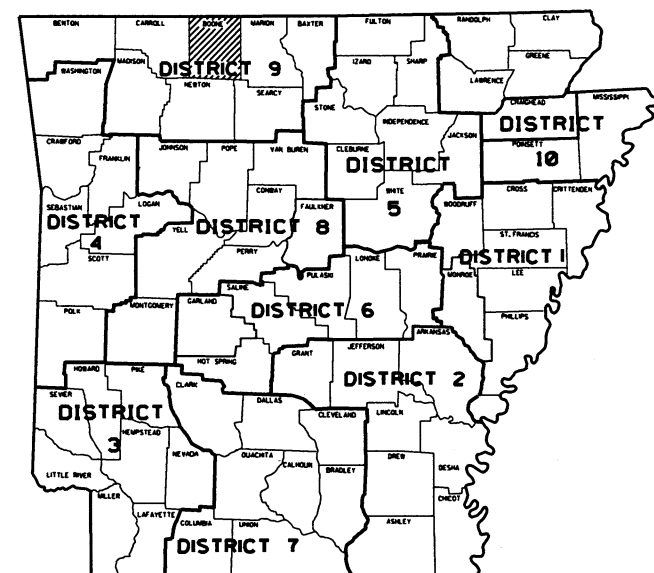
VICINITY MAP

ARKANSAS DEPARTMENT OF TRANSPORTATION
CONSTRUCTION PLANS FOR STATE HIGHWAY

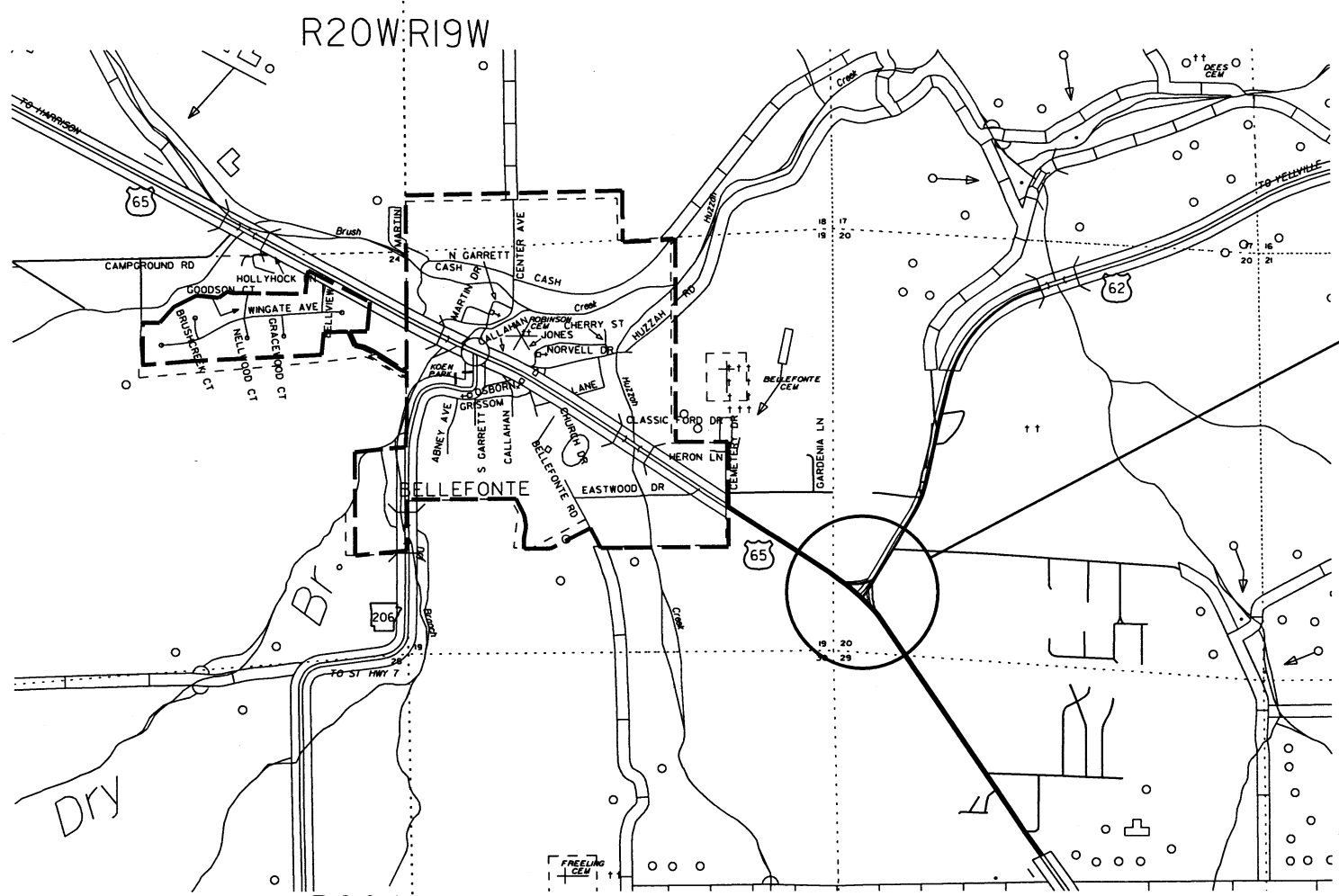
HWY. 65 & HWY. 62 SIGNAL
(BOONE CO.) (S)

BOONE COUNTY
ROUTE 65 SECTION 2
ROUTE 62 SECTION 7
JOB 090519
FED. AID PROJ. NO. STPF-0005(46)

NOT TO SCALE



ARKANSAS HWY. DIST. 9



HWY. 65 & HWY. 62
LOG MILE 5.20
(HWY. 65)
LOG MILE 0.00
(HWY. 62)

PROJECT COORDINATES:

	MID-POINT
LAT.	N36° 11' 31"
LONG.	W93° 01' 56"

NO LENGTH INVOLVED

GROSS	LENGTH OF PROJECT	0.00 FEET OR	0.00 MILES
NET	" ROADWAY	0.00 "	0.00 "
NET	" BRIDGE	0.00 "	0.00 "
NET	" PROJECT	0.00 "	0.00 "

APPROVED



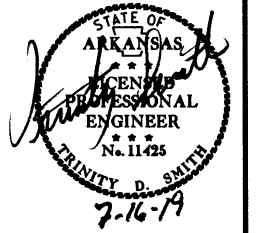
7-16-19
DEPUTY DIRECTOR
AND CHIEF ENGINEER

7/11/2019

T090519.DGN

DATE REVISED	DATE FILED	DATE REVISED	DATE FILED	FED. RD. DIST. NO.	STATE	FED. AID PROJ. NO.	SHEET NO.	TOTAL SHEETS
				6	ARK.			
						JOB NO. 090519	2	19

② INDEX OF SHEETS AND STANDARD DRAWINGS



INDEX OF SHEETS

SHEET NO.	TITLE
1	TITLE SHEET
2	INDEX OF SHEETS AND STANDARD DRAWINGS
3	GOVERNING SPECIFICATIONS AND GENERAL NOTES
4	TEMPORARY EROSION CONTROL DETAILS
5	MAINTENANCE OF TRAFFIC DETAILS
6	PERMANENT PAVEMENT MARKING DETAILS
7 - 8	QUANTITIES
9	SUMMARY OF QUANTITIES AND REVISIONS
10 - 11	SURVEY CONTROL DETAILS
12	TRAFFIC SIGNAL NOTES
13	TRAFFIC SIGNAL QUANTITIES
14 - 17	SIGNALIZATION PLAN SHEETS
18 - 19	CROSS SECTIONS

ROADWAY STANDARD DRAWINGS

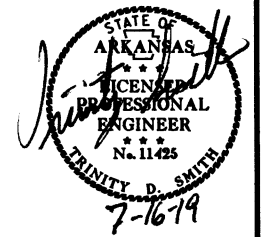
DRWG.NO.	TITLE	DATE
CG-1	CURBING DETAILS	11-29-07
DR-1	DETAILS OF DRIVEWAYS & ISLANDS	02-27-14
PCC-1	CONCRETE PIPE CULVERT FILL HEIGHTS & BEDDING	02-27-14
PCM-1	METAL PIPE CULVERT FILL HEIGHTS & BEDDING	02-27-14
PCP-1	PLASTIC PIPE CULVERT (HIGH DENSITY POLYETHYLENE)	02-27-14
PCP-2	PLASTIC PIPE CULVERT (PVC F949)	02-27-14
PM-1	PAVEMENT MARKING DETAILS	06-01-17
SD-4	LOOP DETECTOR INSTALLATION	11-16-17
SD-5	CONTROLLER CABINET UTILITY DRAWER	09-12-13
SD-6	HEAVY DUTY PULL BOX	11-16-17
SD-8	SIGNAL HEAD PLACEMENT	12-08-16
SD-9	SERVICE POINT	11-16-17
SD-11	STEEL POLE WITH MAST ARM	11-16-17
TC-1	STANDARD TRAFFIC CONTROLS FOR HIGHWAY CONSTRUCTION	04-13-17
TC-2	STANDARD TRAFFIC CONTROLS FOR HIGHWAY CONSTRUCTION	09-02-15
TC-3	STANDARD TRAFFIC CONTROLS FOR HIGHWAY CONSTRUCTION	07-25-19
TEC-1	TEMPORARY EROSION CONTROL DEVICES	11-16-17
WF-4	WIRE FENCE TYPE C AND D	08-22-02

7/11/2019

T090519.DGN

DATE REVISED	DATE FILED	DATE REVISED	DATE FILED	FED. DIST. NO.	STATE	FED. AID PROJ. NO.	SHEET NO.	TOTAL SHEETS
				6	ARK.			
							JOB NO.	090519
								3
								19

2 GOVERNING SPECIFICATIONS AND GENERAL NOTES



GOVERNING SPECIFICATIONS

ARKANSAS STATE HIGHWAY COMMISSION STANDARD SPECIFICATIONS FOR HIGHWAY CONSTRUCTION, EDITION OF 2014, AND THE FOLLOWING SPECIAL PROVISIONS AND SUPPLEMENTAL SPECIFICATIONS:

NUMBER	TITLE
ERRATA	ERRATA FOR THE BOOK OF STANDARD SPECIFICATIONS
FHWA-1273	REQUIRED CONTRACT PROVISIONS FEDERAL-AID CONSTRUCTION CONTRACTS
FHWA-1273	SUPPLEMENT - EQUAL EMPLOYMENT OPPORTUNITY - NOTICE TO CONTRACTORS
FHWA-1273	SUPPLEMENT - SPECIFIC EQUAL EMPLOYMENT OPPORTUNITY RESPONSIBILITIES (23 U.S.C. 140)
FHWA-1273	SUPPLEMENT - EQUAL EMPLOYMENT OPPORTUNITY - GOALS AND TIMETABLES
FHWA-1273	SUPPLEMENT - EQUAL EMPLOYMENT OPPORTUNITY - FEDERAL STANDARDS
FHWA-1273	SUPPLEMENT - POSTERS AND NOTICES REQUIRED FOR FEDERAL-AID PROJECTS
FHWA-1273	SUPPLEMENT - WAGE RATE DETERMINATION
100-3	CONTRACTOR'S LICENSE
100-4	DEPARTMENT NAME CHANGE
102-2	ISSUANCE OF PROPOSALS
108-1	LIQUIDATED DAMAGES
108-2	WORK ALLOWED PRIOR TO ISSUANCE OF WORK ORDER
306-1	QUALITY CONTROL AND ACCEPTANCE
505-1	PORTLAND CEMENT CONCRETE DRIVEWAY
604-1	RETROREFLECTIVE SHEETING FOR TRAFFIC CONTROL DEVICES IN CONSTRUCTION ZONES
606-1	PIPE CULVERTS FOR SIDE DRAINS
620-1	MULCH COVER
634-1	CURBING
700-2	TRAFFIC CONTROL FACILITIES
JOB 090519	ACTUATED CONTROLLER
JOB 090519	BIDDING REQUIREMENTS AND CONDITIONS
JOB 090519	CABINET DRAWER ASSEMBLY
JOB 090519	CARGO PREFERENCE ACT REQUIREMENTS
JOB 090519	DELAY IN RIGHT OF WAY OCCUPANCY
JOB 090519	DISADVANTAGED BUSINESS ENTERPRISE BIDDER'S RESPONSIBILITIES
JOB 090519	EDGE CARD VIDEO PROCESSOR
JOB 090519	ELECTRICAL CONDUCTORS FOR LUMINAIRES
JOB 090519	ELECTRICAL CONDUCTORS-IN-CONDUIT
JOB 090519	GOALS FOR DISADVANTAGED BUSINESS ENTERPRISE PARTICIPATION
JOB 090519	LED LUMINAIRE ASSEMBLY (BUG U0 TYPE)
JOB 090519	LED TRAFFIC SIGNAL HEAD
JOB 090519	LOOP WIRING REVISION 1.4
JOB 090519	MANDATORY ELECTRONIC CONTRACT
JOB 090519	MANDATORY ELECTRONIC DOCUMENT SUBMITTAL
JOB 090519	PLASTIC PIPE
JOB 090519	RETROREFLECTIVE BACKPLATES
JOB 090519	SERVICE POINT ASSEMBLY (TRAFFIC CONTROL DEVICES)
JOB 090519	UTILITY ADJUSTMENTS
JOB 090519	VIDEO DETECTOR (COLOR)

GENERAL NOTES

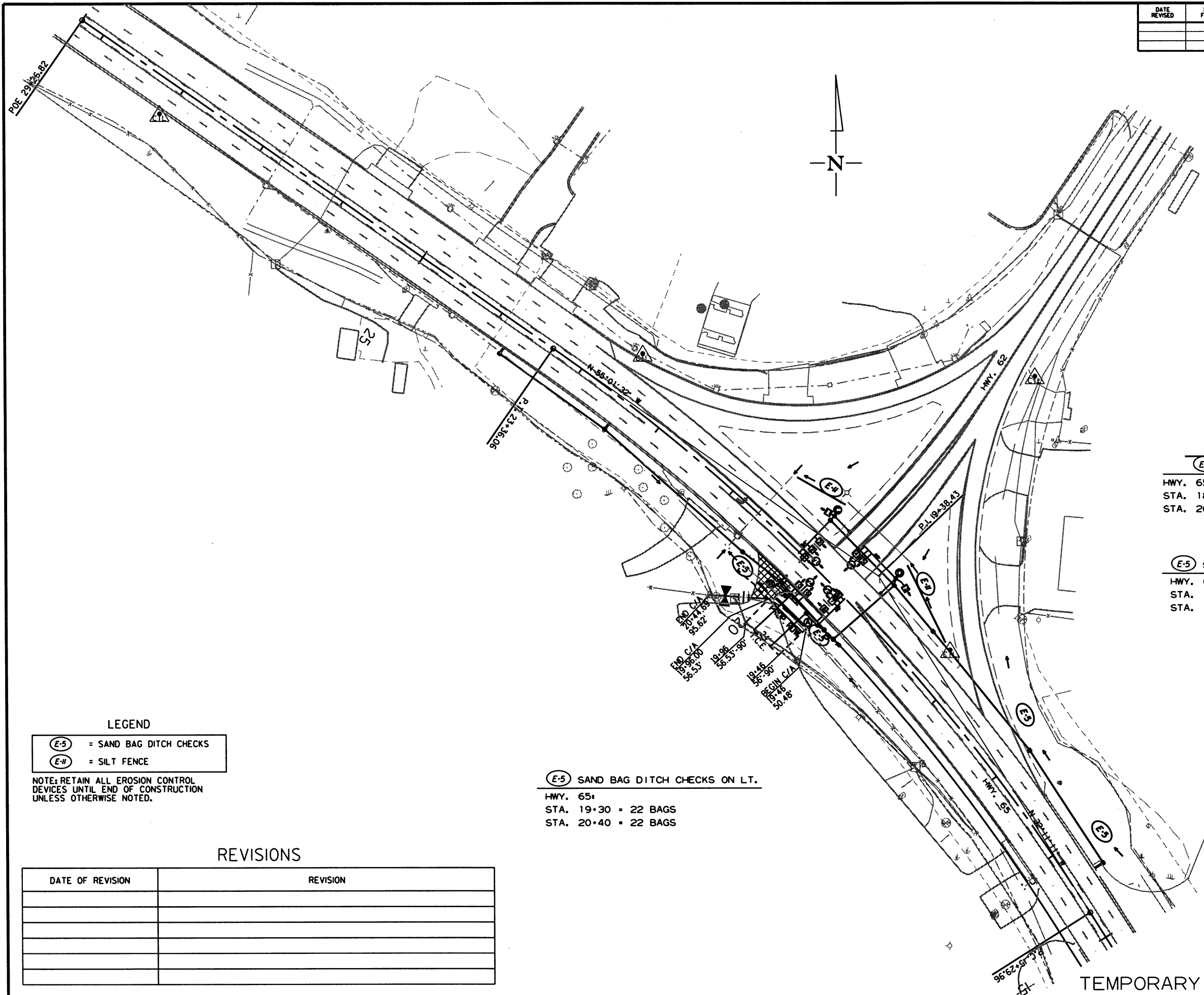
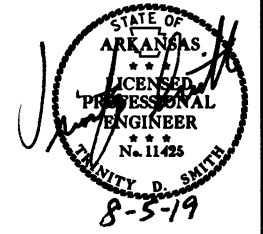
- ALL PIPE LINES, POWER, TELEPHONE, AND TELEGRAPH LINES TO BE MOVED OR LOWERED BY THE RESPECTIVE OWNERS AS PER AGREEMENT WITH SUCH OWNERS.
- ANY EQUIPMENT OR APPURTENANCE THAT INTERFERES WITH THE PROPOSED CONSTRUCTION AND WHICH MAY BE THE PROPERTY OF UTILITY SERVICE ORGANIZATIONS SHALL BE MOVED BY THE OWNERS UNLESS OTHERWISE PROVIDED.
- THE CONTRACTOR SHALL BE RESPONSIBLE FOR MAINTAINING U. S. MAILBOXES WITHIN THE PROJECT LIMITS IN SUCH A MANNER THAT THE PUBLIC MAY RECEIVE CONTINUED MAIL SERVICE. PAYMENT WILL BE CONSIDERED INCLUDED IN THE PRICE BID FOR THE VARIOUS BID ITEMS.
- ALL LAND MONUMENTS LOCATED WITHIN THE CONSTRUCTION AREA SHALL BE PROTECTED IN ACCORDANCE WITH SECTION 107.12 OF THE STANDARD SPECIFICATIONS.
- ALL TREES THAT DO NOT DIRECTLY INTERFERE WITH THE PROPOSED CONSTRUCTION SHALL BE SPARED AS DIRECTED BY THE ENGINEER. CARE AND DISCRETION SHALL BE USED TO INSURE THAT ALL TREES NOT TO BE REMOVED SHALL BE HARMED AS LITTLE AS POSSIBLE DURING THE CONSTRUCTION OPERATIONS.
- THE CONTRACTOR SHALL BE RESPONSIBLE FOR PROVIDING A FENCE TO CONTROL LIVESTOCK IN AREAS WHERE PASTURES ARE SEVERED. WIRE FENCE MAY BE CONSTRUCTED INITIALLY, OR IN LIEU THEREOF, THE CONTRACTOR AT HIS OWN EXPENSE, MAY ELECT TO PROVIDE TEMPORARY FENCING SUITABLE TO CONTAIN LIVESTOCK.
- THE SEQUENCE AS SHOWN ON THE MAINTENANCE OF TRAFFIC PLANS IS A GENERAL OUTLINE FOR THE CONSTRUCTION OF THIS PROJECT, AND IN NO WAY IS IT INTENDED TO COVER EVERY ITEM IN THE PROJECT. ITEMS NOT CRITICAL TO THE CONSTRUCTION SEQUENCE MAY BE CONSTRUCTED IN ANY STAGE AS APPROVED BY THE RESIDENT ENGINEER.
- ALL FLEXIBLE BASE AND ASPHALTIC PAVEMENTS REMOVED SHALL BE PAID FOR UNDER THE ITEM NO. 210 - UNCLASSIFIED EXCAVATION.
- THE EXISTING ASPHALT PAVEMENT TO BE REMOVED FROM THE REMAINING PAVEMENT SHALL BE SEPARATED BY SAWING ALONG A NEAT LINE. AFTER SAWING, THE PAVEMENT TO BE REMOVED SHALL BE CAREFULLY REMOVED IN A MANNER THAT WILL NOT DAMAGE THE PAVEMENT THAT IS TO REMAIN. ANY DAMAGE OF THE ASPHALT PAVEMENT THAT IS TO REMAIN IN PLACE SHALL BE REPAIRED AT THE CONTRACTOR'S EXPENSE.

7/16/2019

T090519.DGN

DATE REVISED	DATE FILMED	DATE REVISED	DATE FILMED	FED. RD. DIST. NO.	STATE	FED. AID PROJ. NO.	SHEET NO.	TOTAL SHEETS
				6	ARK.			
JOB NO. 090519							4	19

② TEMPORARY EROSION CONTROL DETAILS



(E-11) SILT FENCE ON RT.
 HWY. 65
 STA. 18+38-19+21 = 90 LIN. FT.
 STA. 20+07-20+61 = 60 LIN. FT.

(E-5) SAND BAG DITCH CHECKS ON RT.
 HWY. 65
 STA. 15+92 = 22 BAGS
 STA. 17+30 = 22 BAGS

(E-5) SAND BAG DITCH CHECKS ON LT.
 HWY. 65
 STA. 19+30 = 22 BAGS
 STA. 20+40 = 22 BAGS

LEGEND

(E-5)	= SAND BAG DITCH CHECKS
(E-11)	= SILT FENCE

NOTE: RETAIN ALL EROSION CONTROL DEVICES UNTIL END OF CONSTRUCTION UNLESS OTHERWISE NOTED.

REVISIONS

DATE OF REVISION	REVISION

8/2/2019

T090519.DGN