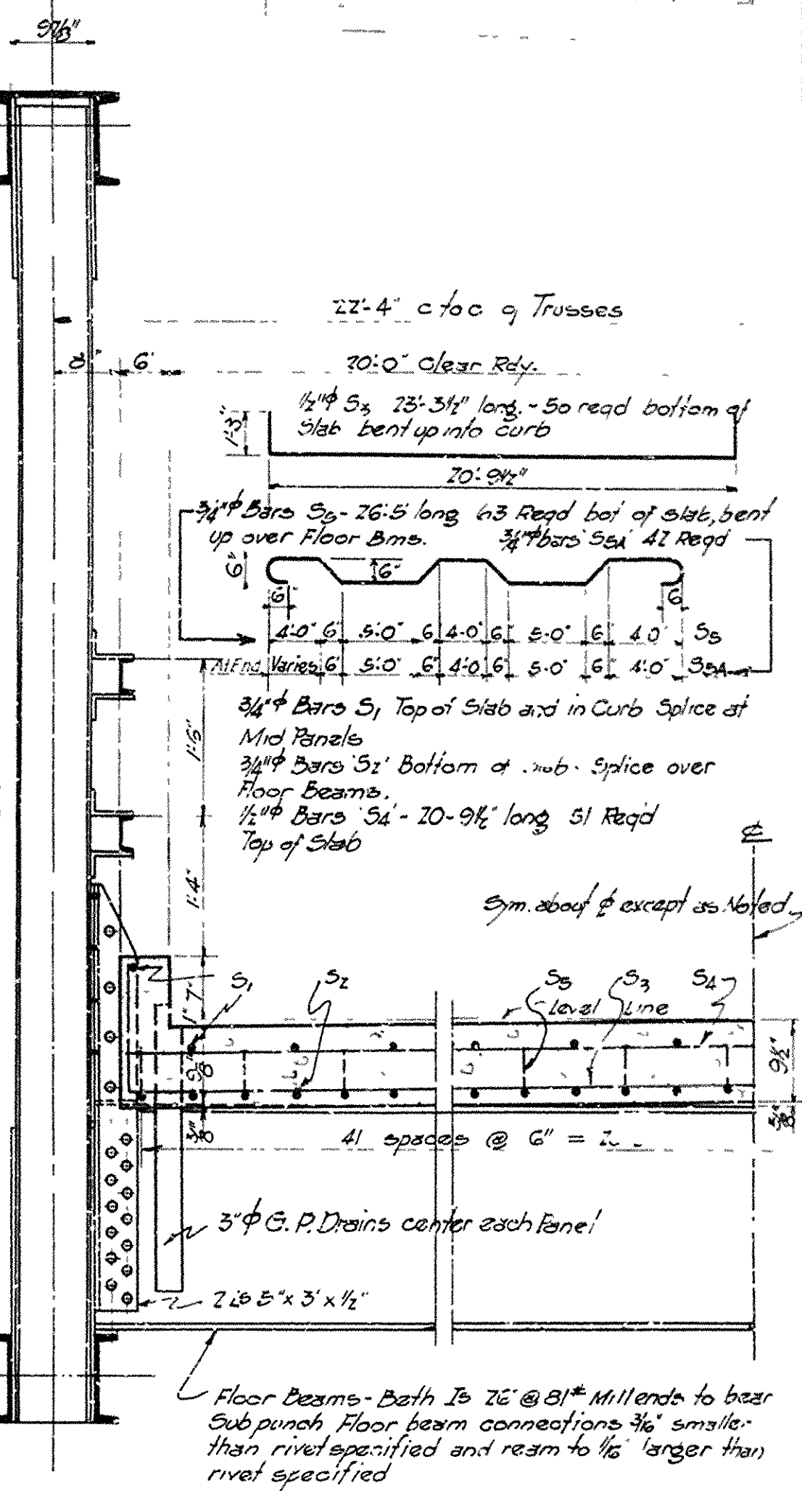
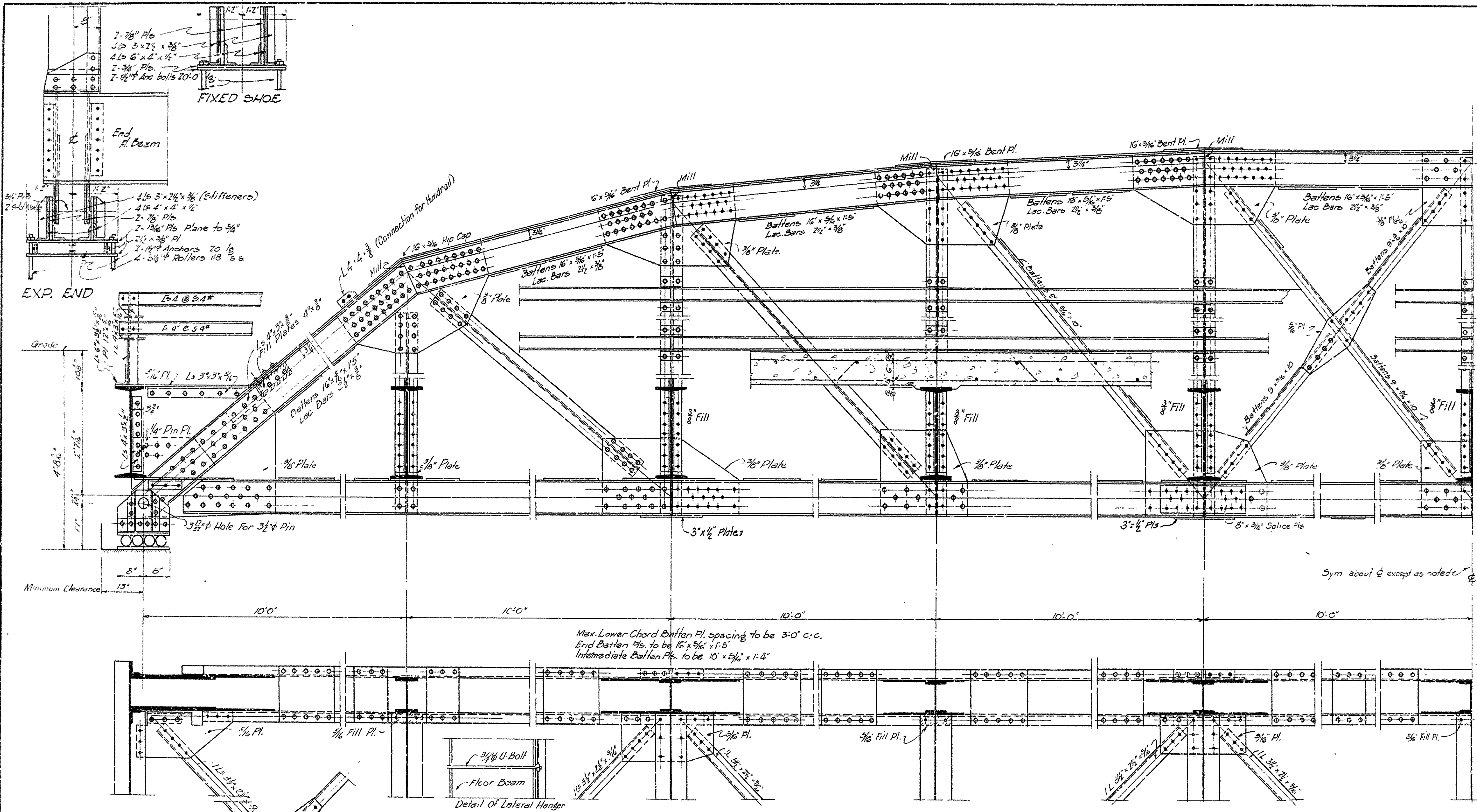


| | | | |
|---------------|---------|-----------|--------------|
| FEEDBACK YEAR | Job No. | SHEET NO. | TOTAL SHEETS |
| | | | |

| | | | | | |
|-------|--------------------|-------------|--------------|-----------|--------------|
| STATE | FED. AID PROJ. NO. | FISCAL YEAR | CONTRACT NO. | SHEET NO. | TOTAL SHEETS |
| ARK. | 36 | 1925 | | 5 | 70 |

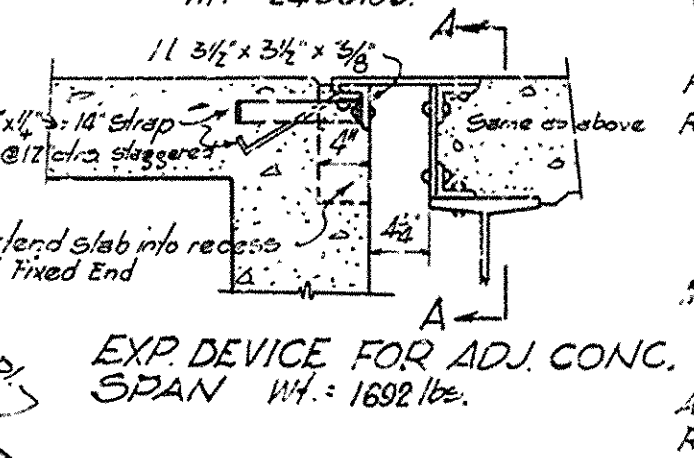
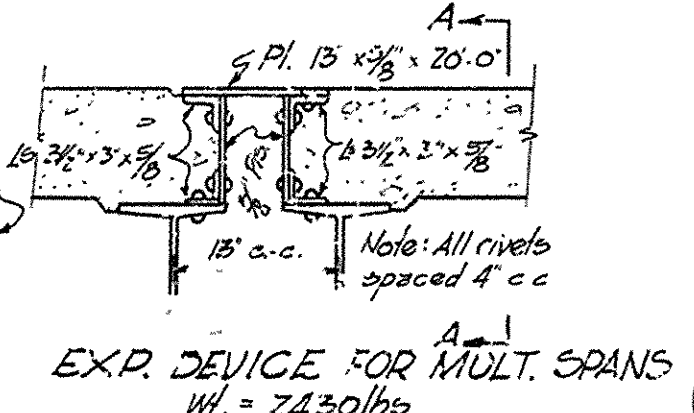


FLOOR BEAM DATA

D.L.M. = 30,247 x 77.33 x 15 = 1,013,175#
 L.L.M. = 22,388 x 10,417 - 11000 x 6 = 1,934,592#
 Imp @ 30% = 580,378#
 Total Mom. = 3,528,025#
 Sec. Mod. Req'd. = 3,528,025 / 196.01 = 17,997.01
 Sec Mod. of Both I's @ 81" = 20171

| | | | |
|-------------------------|--------------------------|-------------------------|-------------------------|
| D ₁ = 187.98 | D ₂ = 166.985 | D ₃ = 187.70 | D ₄ = 189.55 |
| L ₁ = 67.86 | L ₂ = 73.40 | L ₃ = 80.09 | L ₄ = 83.32 |
| T ₁ = 16.09 | T ₂ = 18.79 | T ₃ = 20.50 | T ₄ = 21.38 |
| T ₅ = 221.92 | T ₆ = 299.175 | T ₇ = 282.79 | T ₈ = 291.20 |

| | | | |
|-------------------------|--------------------------|-------------------------|-------------------------|
| D ₁ = 187.30 | D ₂ = 179.75 | D ₃ = 177.14 | D ₄ = 174.53 |
| L ₁ = 67.86 | L ₂ = 73.40 | L ₃ = 80.09 | L ₄ = 83.32 |
| T ₁ = 16.09 | T ₂ = 18.79 | T ₃ = 20.50 | T ₄ = 21.38 |
| T ₅ = 221.92 | T ₆ = 299.175 | T ₇ = 282.79 | T ₈ = 291.20 |



SPECIFICATIONS

Live Load
 Uniform Load - 80 lbs. per Sq Ft of Rwy.
 Concentrated - 7-15 Ton trucks as shown
 Impact - 100% (L+300)

Rivets to be 3/4" in diameter
 Rivet holes: Subpunch all holes in Main Truss connections (both shop and field) 3/16" smaller than rivet specified and ream to 1/8" larger than rivet specified during shop assembly. Members shall be match-marked and a suitable diagram furnished for erection.
 All field connections to be riveted. Rivet holes in tension members so spaced that only one hole is deducted from each angle at point of maximum stress. Deduct two web holes and one flange hole from each channel at point of Max. Stress.
 Shop Paint: 1 coat red lead and raw linseed oil.
 Field Paint: 2 coats of different colors as approved by the Engineer
 Batten Plates shall be spaced not over 3'-0" c/c in tension members.
 Concrete Floor Slab to be 4" thick.

All floor beams are to be milled to exact length. Members of equal or greater strength may be used in place of members shown here but payment will be made in accordance with sizes shown on this plan. This drawing is general only. Shop drawings must be made in compliance with specifications, must be submitted and approved before fabrication is begun. Specifications, Arkansas State Highway Department Specifications, adopted May 30th, 1925 and Revised.

QUANTITIES

| | |
|---|------------|
| Structural Steel (Not including Wgt. of Exp. Devices) | 76800 lbs |
| Reinforcing Steel (Out to Out of End Floor Beams) | 12,400 lbs |
| Class '3' Concrete | 65 Cu Yds |

STANDARD PLAN
100'-0" LOW TRUSS SPAN
20'-0" CLEAR ROADWAY

ARKANSAS STATE HIGHWAY DEPARTMENT
 LITTLE ROCK, ARK.

Drawn by: *Norm. J. ...* Date: 5-1-25
 Traced by: *E. J. ...* Date: 5-6-25
 Checked by: *...* Date: *...*
 Scale: 3/4" = 10'
 BRIDGE No. *...* DRAWING No. 1095

DESIGN: STRESSES & SELECTION OF MEMBERS

M. A. ...
 Bridge Engineer