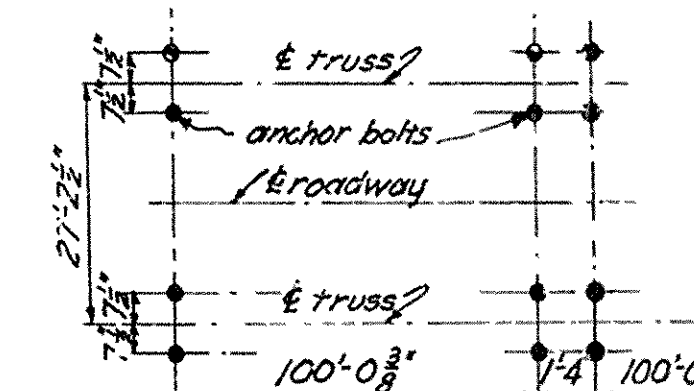


FED. DIST. NO.	STATE	US. W. PROJ. NO.	FISCAL YEAR	SHEET NO.	TOTAL SHEETS
6	ARK.	1752	1935	4	10

ARK. JOB No. 877

STRUCTURAL STEEL	109,400 #
REINFORCING "	14,750 "
SHOES	2140 "
EXP. JOINT ST. TO ST.	1412 "
" " CONCR. TO ST.	1340 "
CONCRETE "S"	735 cu. yds

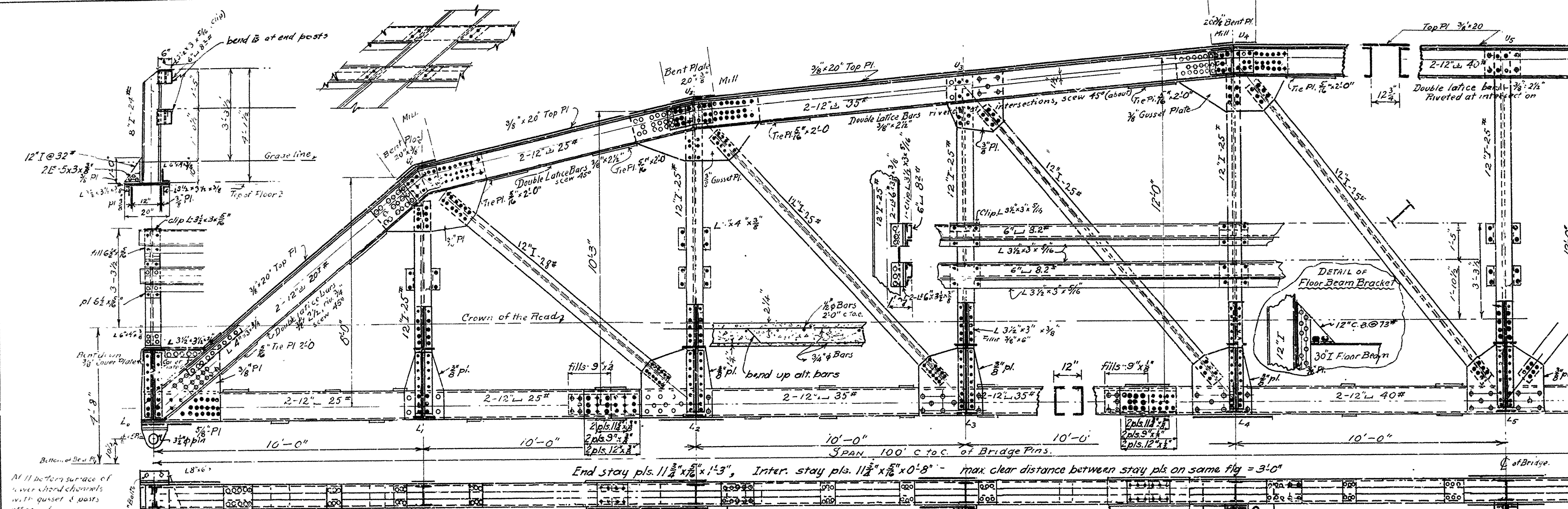
**UNIT STRESSES**  
 Concrete 750 lb/sq.  
 Reinforcing Steel 16000  
 Structural " 16000  
 Live Load = HIS Loading



**ANCHOR BOLT PLAN**  
 Note: 3/8" has been added for elongation due to dead load stress

**Stress in Members**

D-2-210	D-2-240	D-2-260	D-2-270	D-2-280	D-2-290	D-2-300
L-1-105.5	L-1-121.5	L-1-138	L-1-154.5	L-1-171	L-1-187.5	L-1-204
U-7-330.7	U-7-357.7	U-7-384.7	U-7-411.7	U-7-438.7	U-7-465.7	U-7-492.7
L-1-105.5	L-1-121.5	L-1-138	L-1-154.5	L-1-171	L-1-187.5	L-1-204
U-7-330.7	U-7-357.7	U-7-384.7	U-7-411.7	U-7-438.7	U-7-465.7	U-7-492.7



End stay pls. 11 3/8" x 5/8" x 1'-3", Inter. stay pls. 11 3/8" x 5/8" x 0'-8" - max clear distance between stay pls on same fly = 3'-0"

**GENERAL NOTES**

Rivets 3/8", open holes 5/8", except flanges of 6" 3/8" rivets, 5/8" holes.  
 All holes in truss connections to be sub-punched 3/8" and reamed to size while truss is assembled; this applies to field as well as shop rivets.  
 Floor beam connections to be sub-punched 3/8" and reamed to a metal template.  
 Shop paint: After being completely assembled and shop work finished, all pieces except anchor straps on roadway expansion devices shall be given one coat of red lead and raw linseed oil before shipment.  
 Field paint: 1st coat - white lead tinted with lamp black, 2nd coat - aluminum paint. (See Spec. 96.36, 96.29)  
 Floor beams shall be milled to exact length after framing angles have been riveted.  
 Floor slab concrete to be Class 'S'. One inch has been added for wear.  
 Approved shapes of equal or greater strength may be substituted for shapes shown, but payment will be made in accordance with sizes shown on this plan.  
 This drawing shows general features of design only. Shop drawings shall be made in compliance with specifications, submitted and approved before fabrication is begun.  
 Gas pipe drains shall be painted the same as is specified for structural steel. To be paid for as structural steel.  
 All shoe material below bottom lateral plates will be paid for at the unit price bid for Metal Bearing Devices.  
 Specifications: Arkansas Standard Road and Bridge Specifications adopted May 30, 1925, and revised.

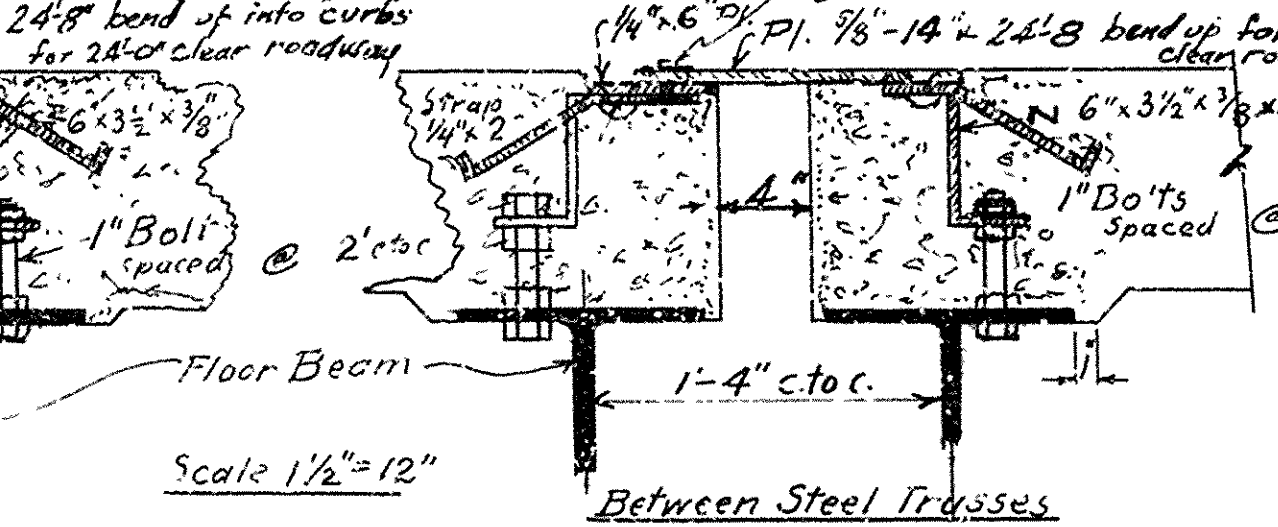
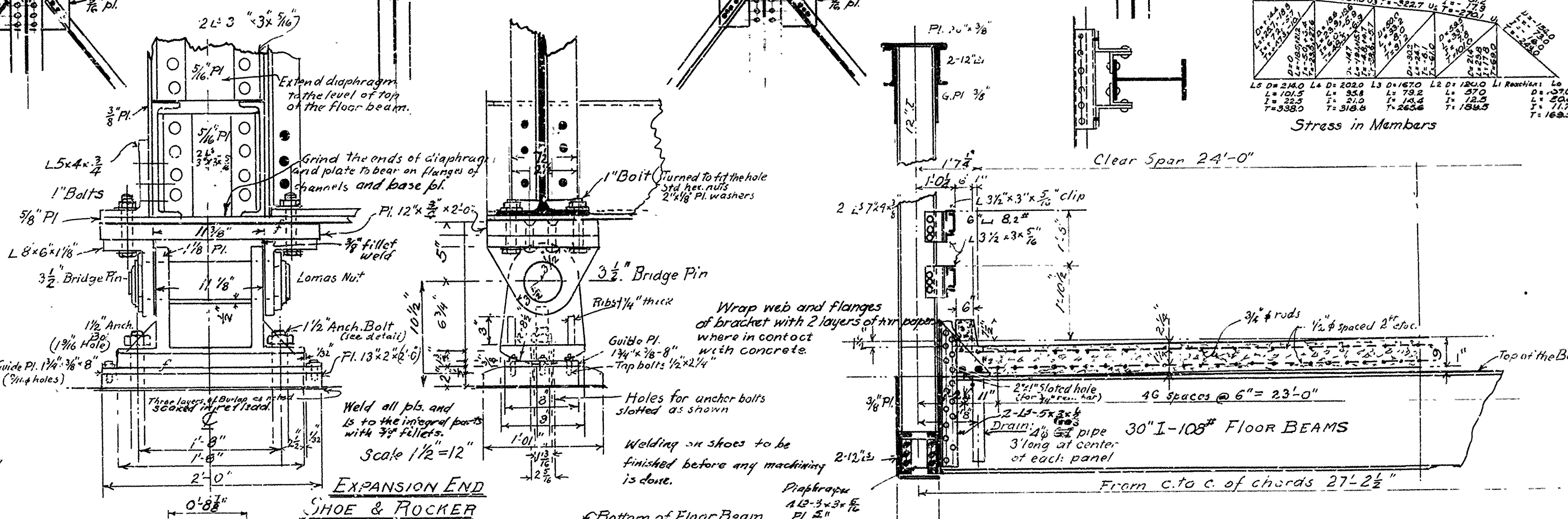


Diagram at abutment

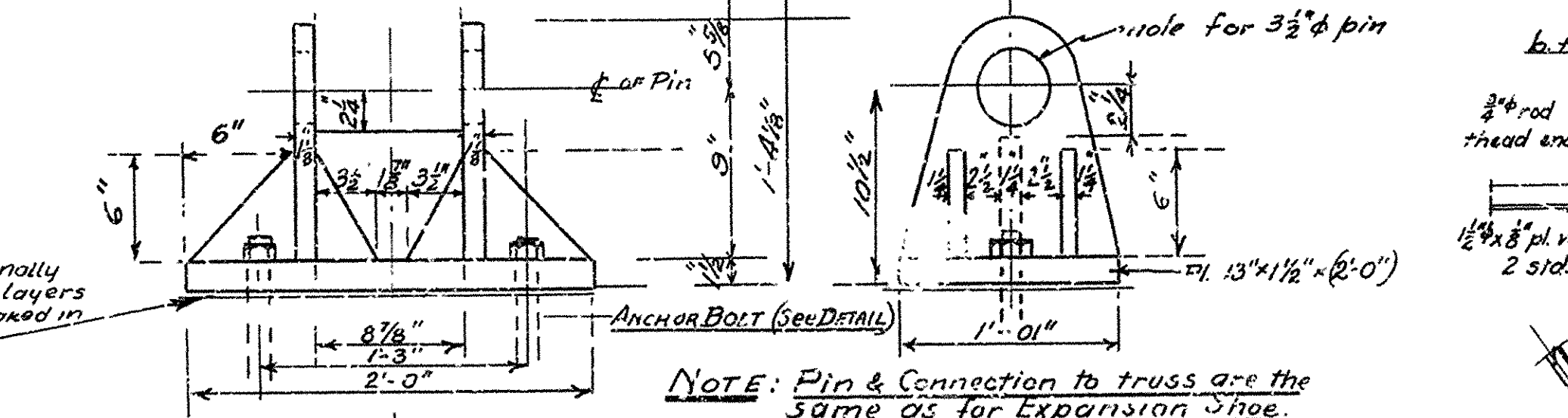
**DETAIL OF TRUSS CONNECTIONS**



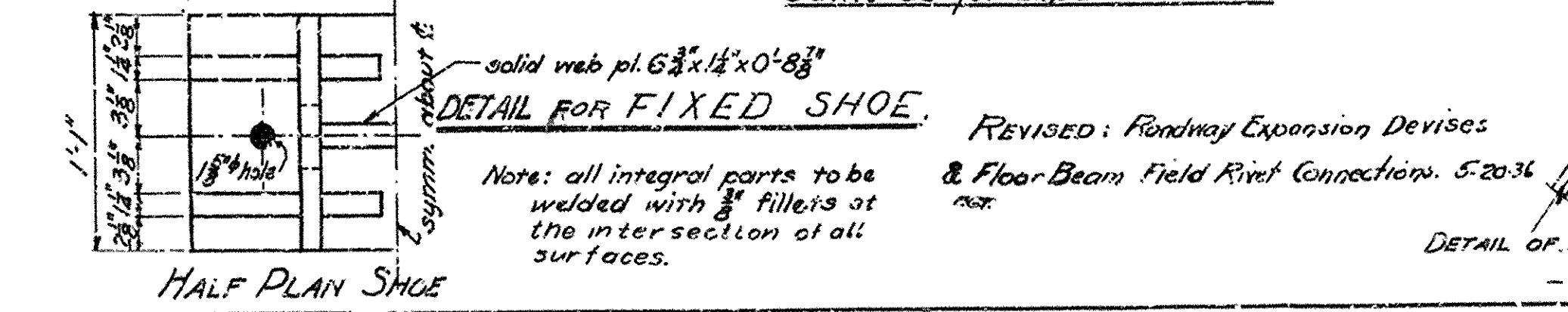
All roadway expansion devices to be bent to crown of roadway in shop.



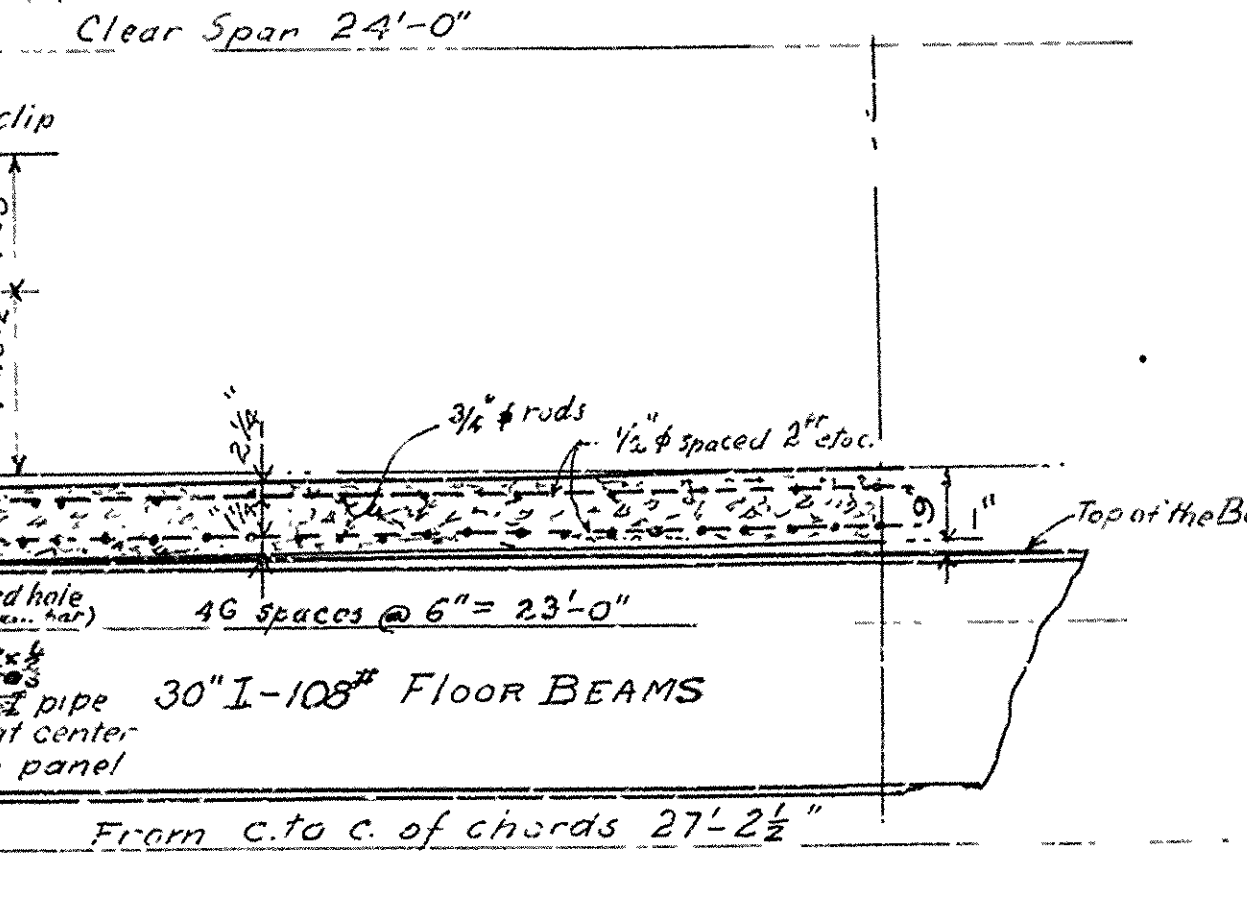
EXPANSION END SHOE & ROCKER



DETAIL FOR FIXED SHOE



HALF PLAN SHOE



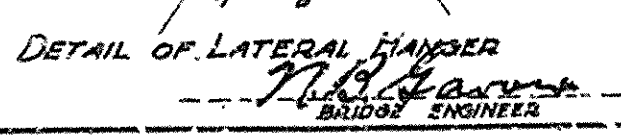
SEC. AT CENTER OF PANEL

**100'-0" LOW TRUSS BRIDGE  
 24'-0" CLEAR ROADWAY**

ARKANSAS STATE HIGHWAY DEPARTMENT  
 LITTLE ROCK, ARK.

Drawn by	F.A.P.	Date	Oct 3, 1935
Traced	"	Checked	"
Checked	"	Scale	1/2" = 1' ft unless stated otherwise
BRIDGE No.	1357	DRAWING No.	2448

REVISED: Roadway Expansion Devices & Floor Beam Field Rivet Connections. 5.20.35



DETAIL OF LATERAL HANGER