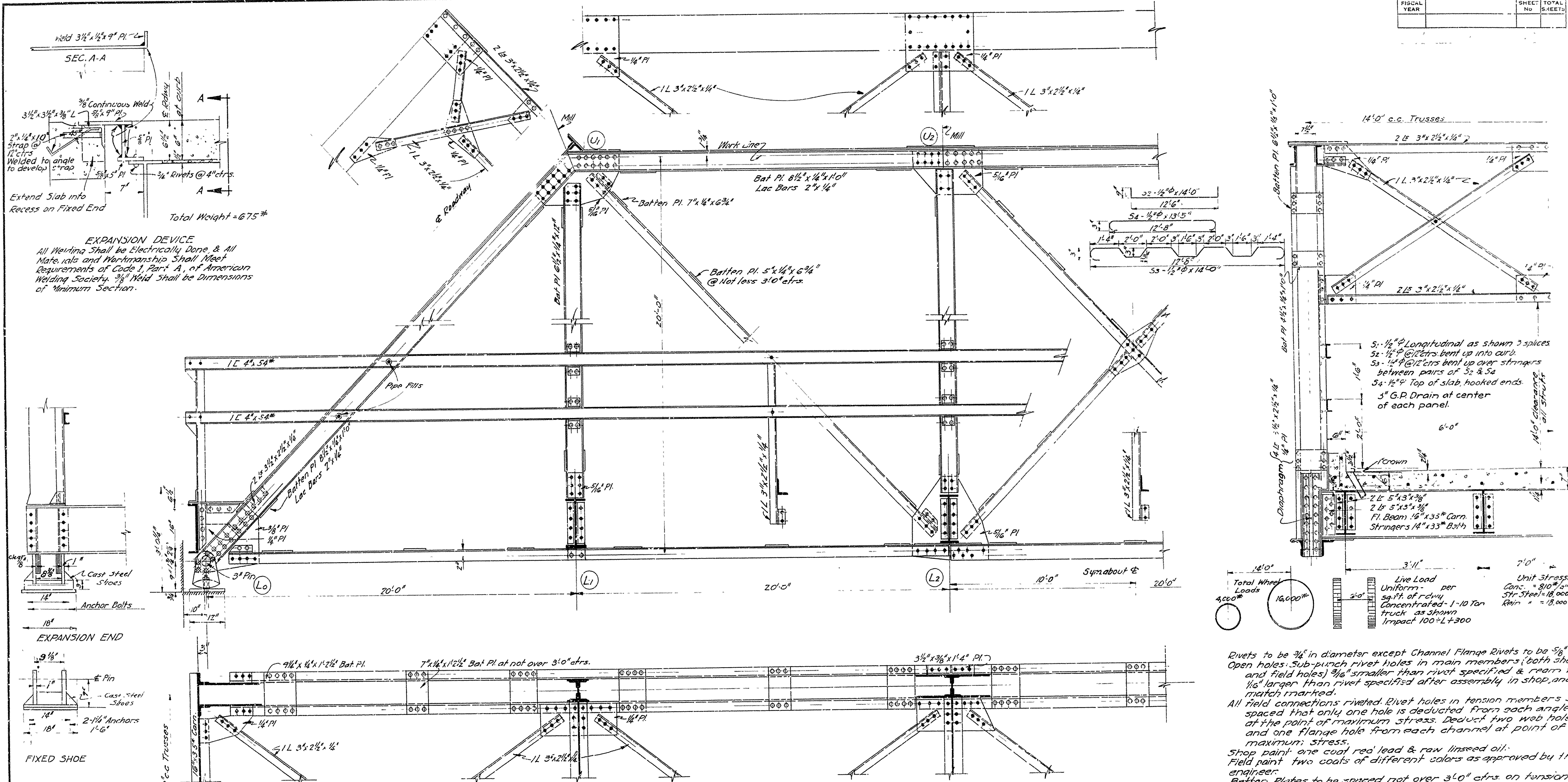
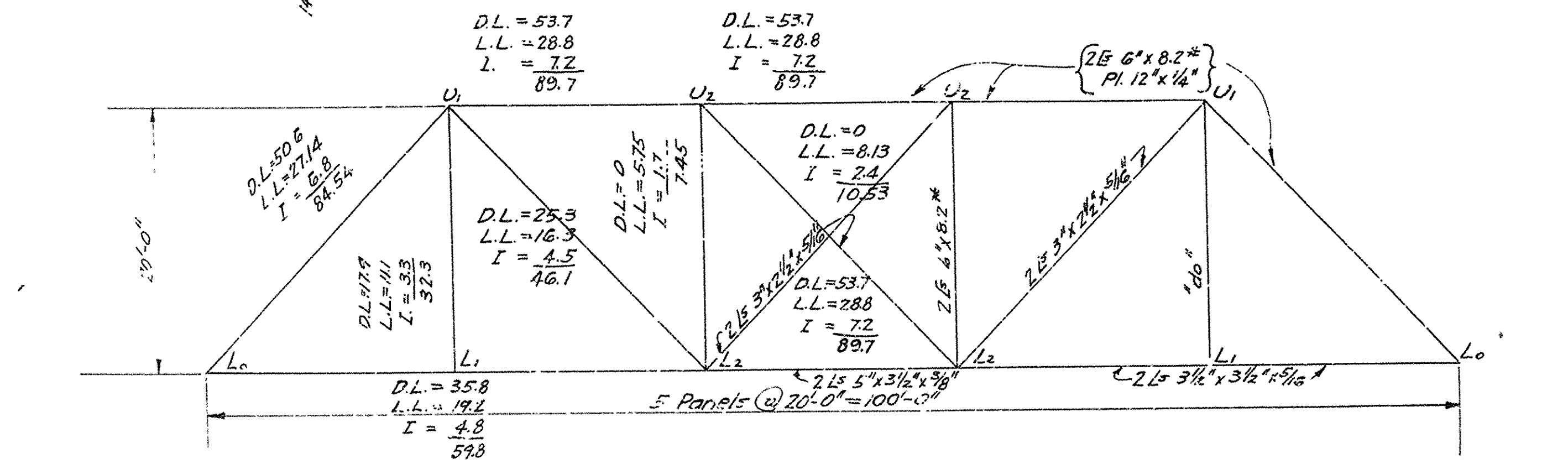
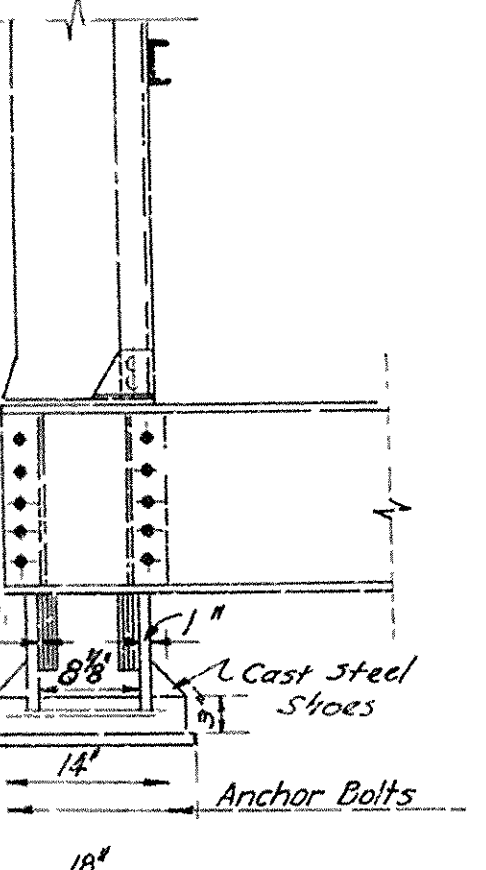


FISCAL YEAR	SHEET NO.	TOTAL SHEETS



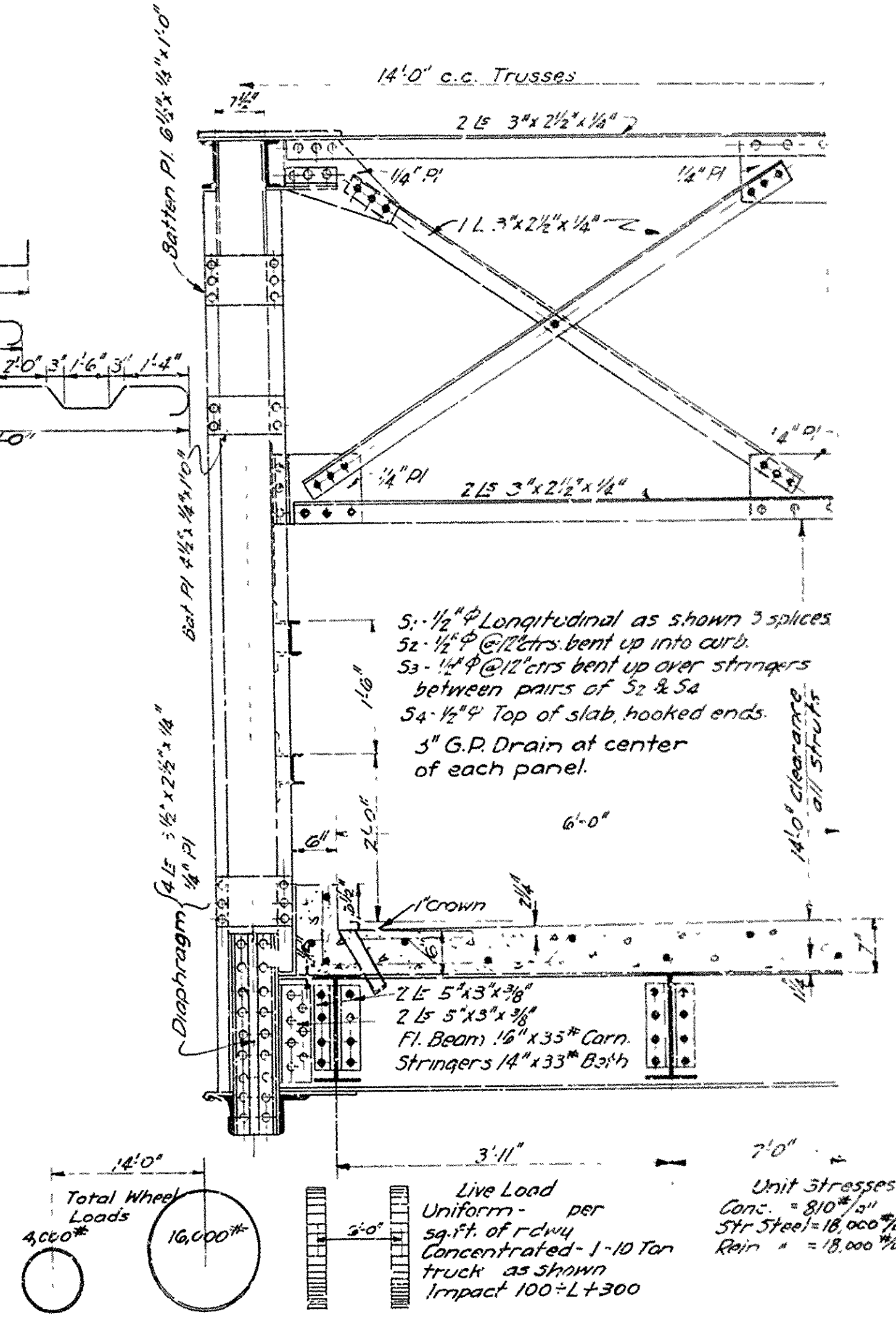
**EXPANSION DEVICE**  
 All Welding Shall be Electrically Done & All Materials and Workmanship Shall Meet Requirements of Code 1, Part A, of American Welding Society. 3/8" Weld Shall be Dimensions of Minimum Section.



**QUANTITIES**  
 Glass "5" Concrete (101'-0") = 28.83 Cu. Yds.  
 Reinforcing Steel = 4,031 Lbs.  
 Structural Steel (& Expan. Devices) = 46,450 Lbs.

**Floor Beam Data**  
 D.L.M. = 7120 x 14<sup>2</sup> x 8 = 52,063  
 L.L.M. = 17,200 x 5.5<sup>2</sup> x 1/2 = 137,140  
 Imp = 30% = 11,142  
 Total = 100,345 Ft. Lbs.  
 Sect. Mod. Req'd = 100,345 x 12 / 18,000 = 55.6

**Stringer Data**  
 D.L.M. = 400 x 20<sup>2</sup> = 20,500  
 L.L.M. = 40,000 x .888 = 35,500  
 Imp = 30% = 10,650  
 Total = 66,650  
 Sect. Mod. Req'd = 66,650 x 12 / 18,000 = 44.4  
 " " 14" x 33" Bath = 47.76



**Total Wheel Loads**  
 4,000#  
 16,000#

**Live Load Uniform - per sq. ft. of rdwy**  
 Concentrated - 1-10 Ton truck as shown  
 Impact 100=L+300

**Unit Stresses**  
 Conc. = 810<sup>2</sup>/in<sup>2</sup>  
 Str. Steel = 18,000<sup>2</sup>/in<sup>2</sup>  
 Rein = 18,000<sup>2</sup>/in<sup>2</sup>

Rivets to be 3/4" in diameter except Channel Flange Rivets to be 5/8" Open holes. Sub-punch rivet holes in main members (both shop and field holes) 1/16" smaller than rivet specified & ream to 1/16" larger than rivet specified after assembly in shop, and match marked.

All field connections riveted. Rivet holes in tension members so spaced that only one hole is deducted from each angle of the point of maximum stress. Deduct two web holes and one flange hole from each channel at point of maximum stress.

Shop paint one coat red lead & raw linseed oil. Field paint two coats of different colors as approved by the engineer.

Batten plates to be spaced not over 3'-0" cfs on tension members.

Concrete Floor Slab - Class "5" Extra 1" added for wear. Stringers & Floor Beams to be milled to exact length. Members of equal or greater strength may be used in place of members shown, but payment will be made in accord with sizes shown here.

This drawing is general only. Shop drawings must be made in compliance with specifications, & must be submitted & approved before fabrication begins. SPECIFICATIONS: Ark. State Highway Specifications, adopted May 30, 1925, & revised.

**STANDARD PLAN**  
 100' HIGH TRUSS SPAN  
 12'0" CLEAR ROADWAY

**ROUTE SEC.**  
**ARKANSAS STATE HIGHWAY DEPARTMENT**  
 LITTLE ROCK, ARK.

Drawn By: E.A.D. Date: 7/27/29  
 Traced By: J.R. Date: 7/27/29  
 Checked By: \_\_\_\_\_ Date: \_\_\_\_\_

Scale: 3/4" = 1 ft.  
 BRIDGE NO. \_\_\_\_\_ DRAWING NO. 1061

BRIDGE ENGINEER