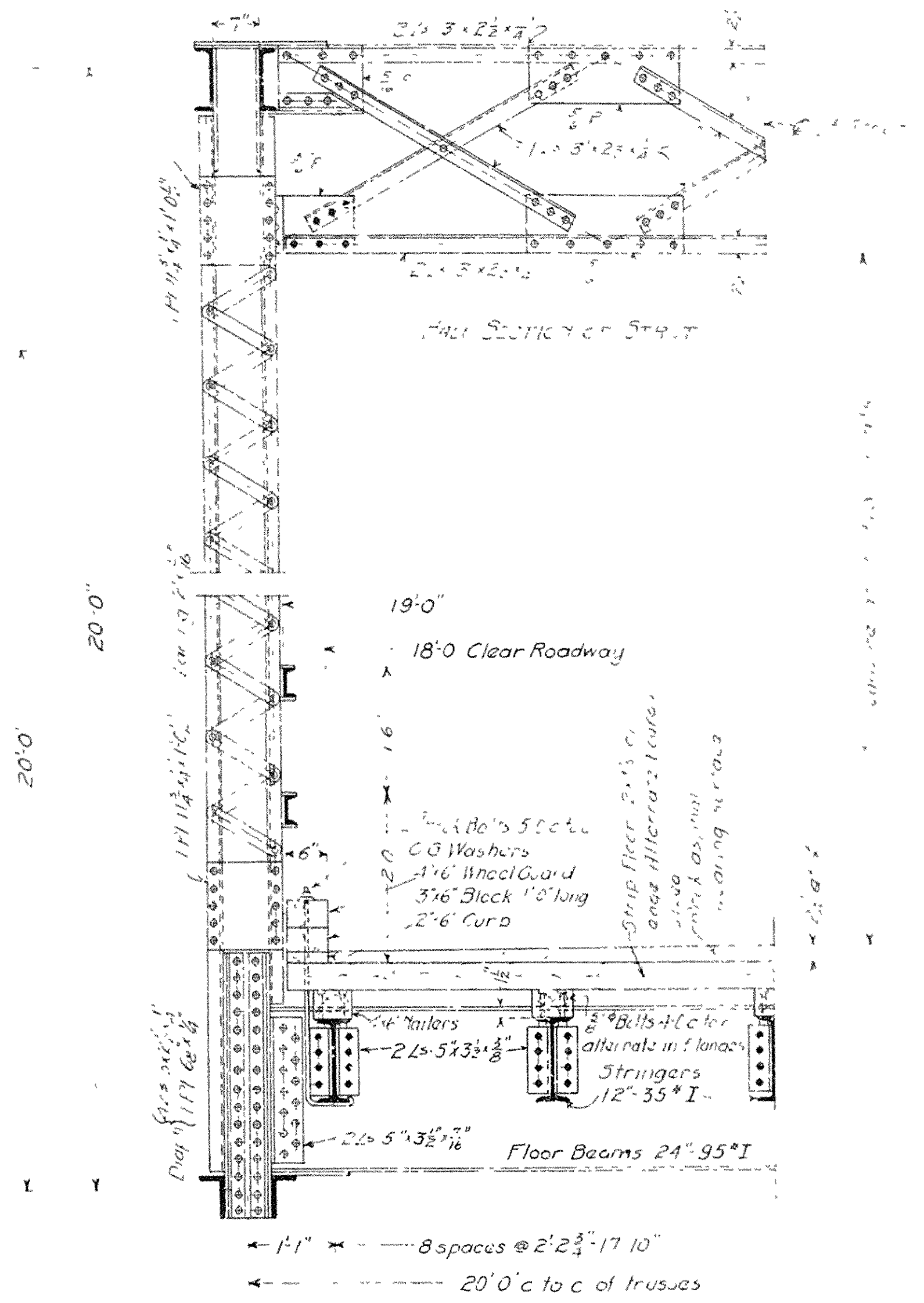
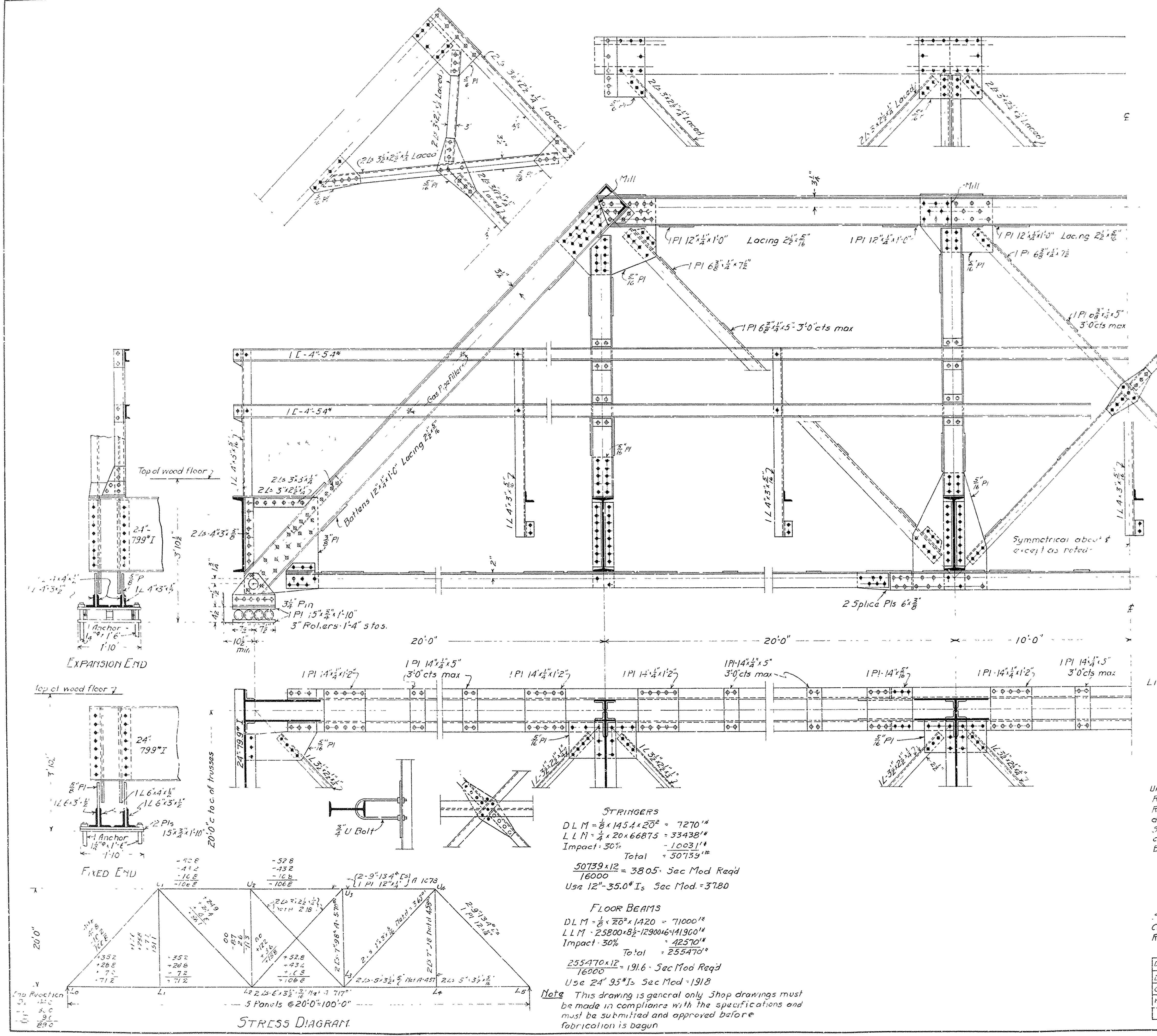


FED. AID DIST. NO.	STATE	FED. AID PROJ. DC.	FISCAL YEAR	SHEET NO.	TOTAL SHEETS
6	ARK.				



**SPECIFICATIONS**

Live Load - Uniform 80\* per sq ft of roadway  
 Concentrated - 2-15 Ten trucks as shown below

Impact  $\frac{100.5}{1+300}$

Unit stresses - See Arkansas Highway Department Specifications  
 Rivets  $\frac{3}{4}$ " and open holes  $\frac{1}{8}$ " except in flanges of 7" channels. All field connections riveted.  
 Rivet holes in tension members are to be so spaced that not more than one hole is deducted from area of cross-section of each angle at point of maximum stress.  
 Shop paint one coat of red lead and one linseed oil field paint two coats of a flammable color as approved by the engineer.  
 Batten plates spaced not over 3'-0" c/c on tension members.

**ESTIMATE OF QUANTITIES**

Structural Steel - Lbs 81410  
 Crossed Lumber - Ft B M  
 Rock Asphalt Wearing Surface - Sq Yds

**STANDARD PLAN**  
 100 FT. STEEL HIGHWAY BRIDGE  
 18 FT ROADWAY - WOOD FLOOR

**ARKANSAS HIGHWAY DEPARTMENT**  
 LITTLE ROCK, ARK.

DESIGNED: S.C.C.  
 DRAWN: R.C.E.  
 CHECKED: M.B.G.  
 REVISIONS:

APPROVED: \_\_\_\_\_  
 CHAIRMAN, ARKANSAS STATE HIGHWAY COMMISSION

BY: \_\_\_\_\_  
 STATE HIGHWAY ENGINEER

RECOMMENDED FOR APPROVAL BY: \_\_\_\_\_  
 STATE HIGHWAY BRIDGE ENGINEER

JUNE 1924