

| FED. ROAD DIST. NO. | STATE | PROJECT NO. | FISCAL YEAR | SHEET NO. | TOTAL SHEETS |
|---------------------|-------|-------------|-------------|-----------|--------------|
| 115 | Ark. | 1189 | 1934 | 7 | 20 |

FLOOR BEAM DATA

Dead Load Moment = 74,600'*

Live " " = 156,000'*

Impact @ 30% = 46,800'*

Total Moment = 277,400'*

Reqd Section Modulus = 208 in³

Sec. Modulus of 27" I-B @ 21 = 233.2 in³

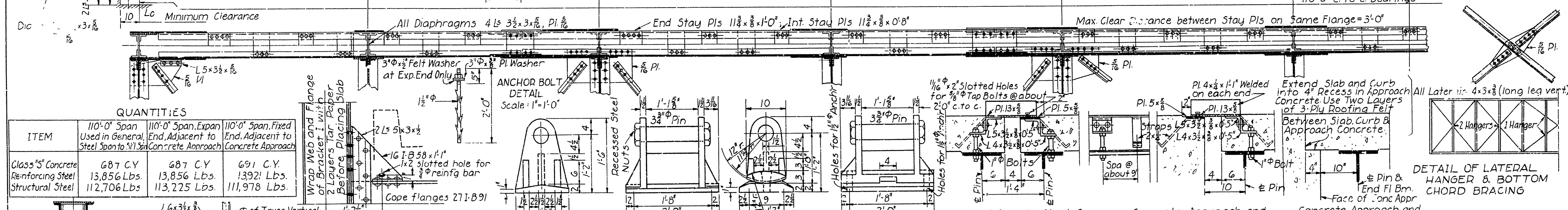
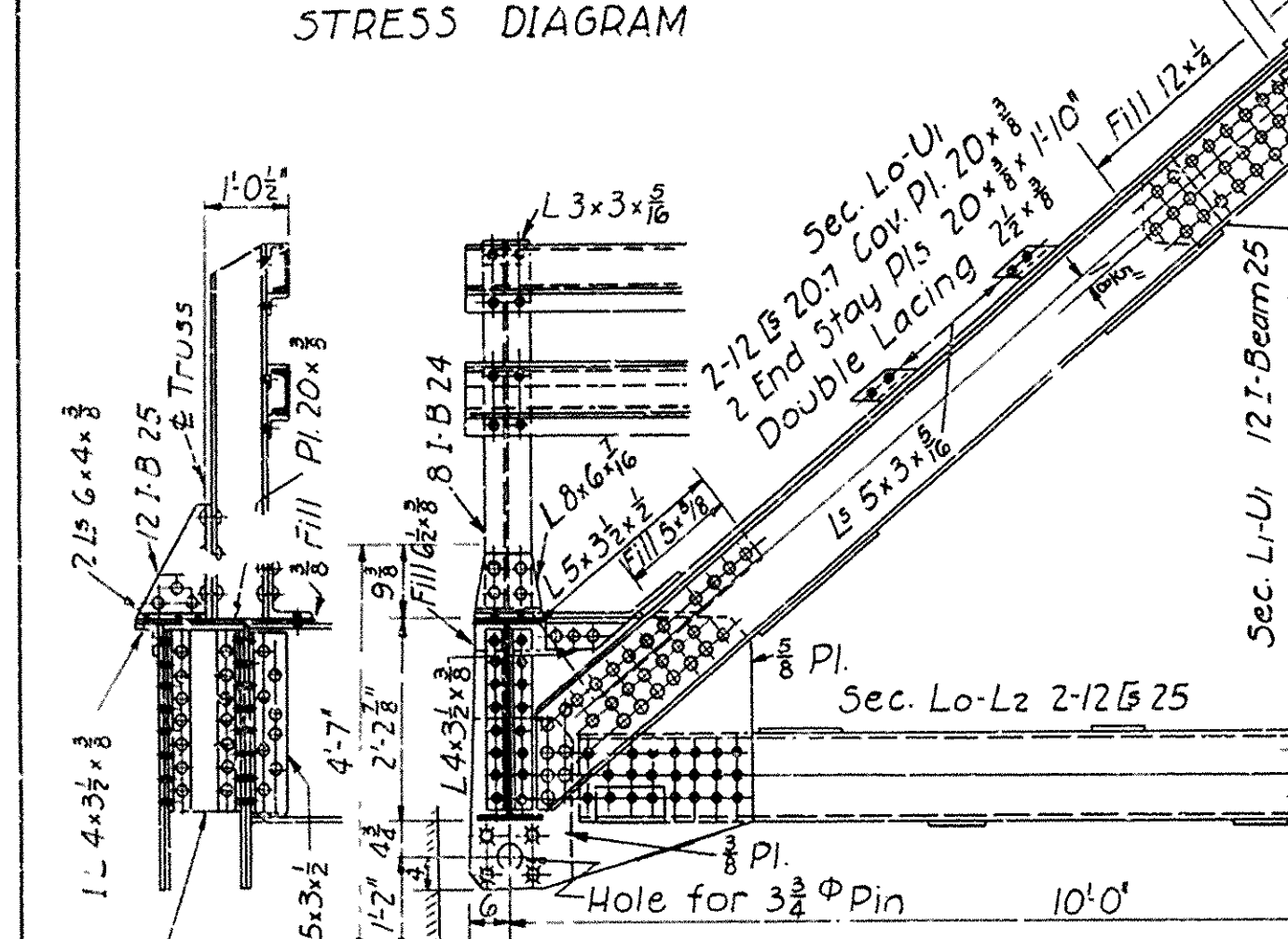
Design Unit Stresses

Reinforcing Steel = 16,000#/in²

Structural Steel = 16,000#/in²

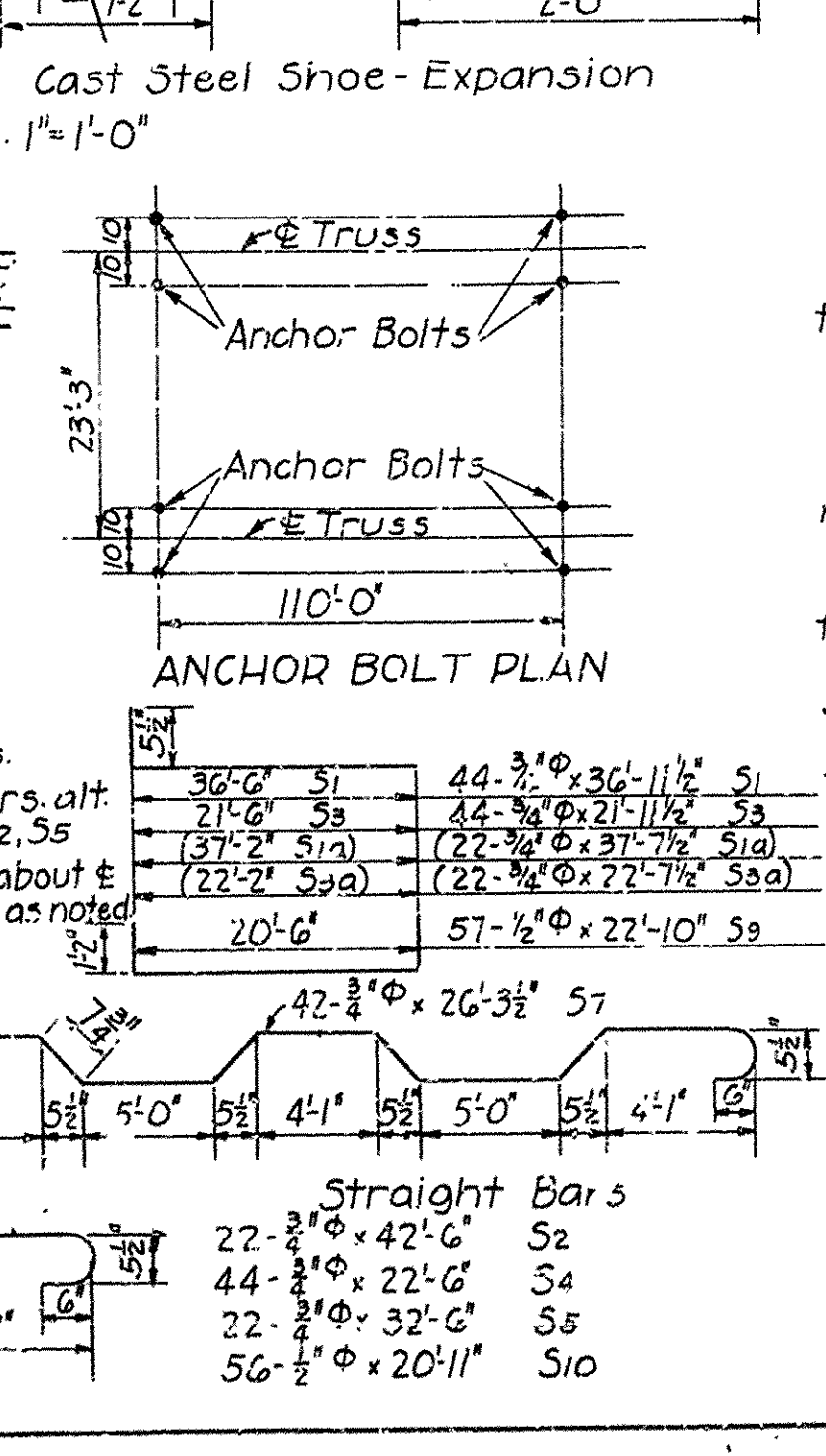
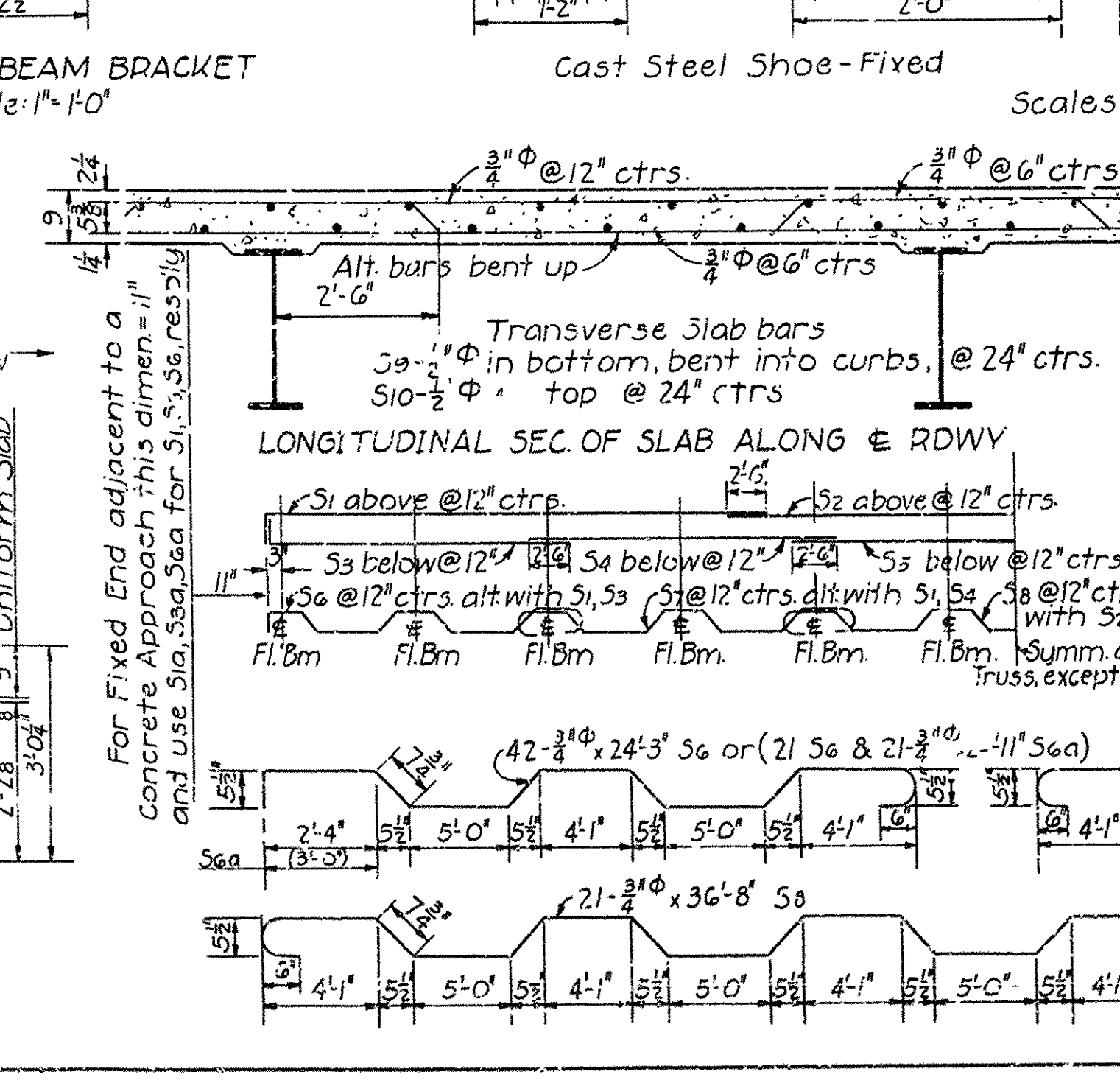
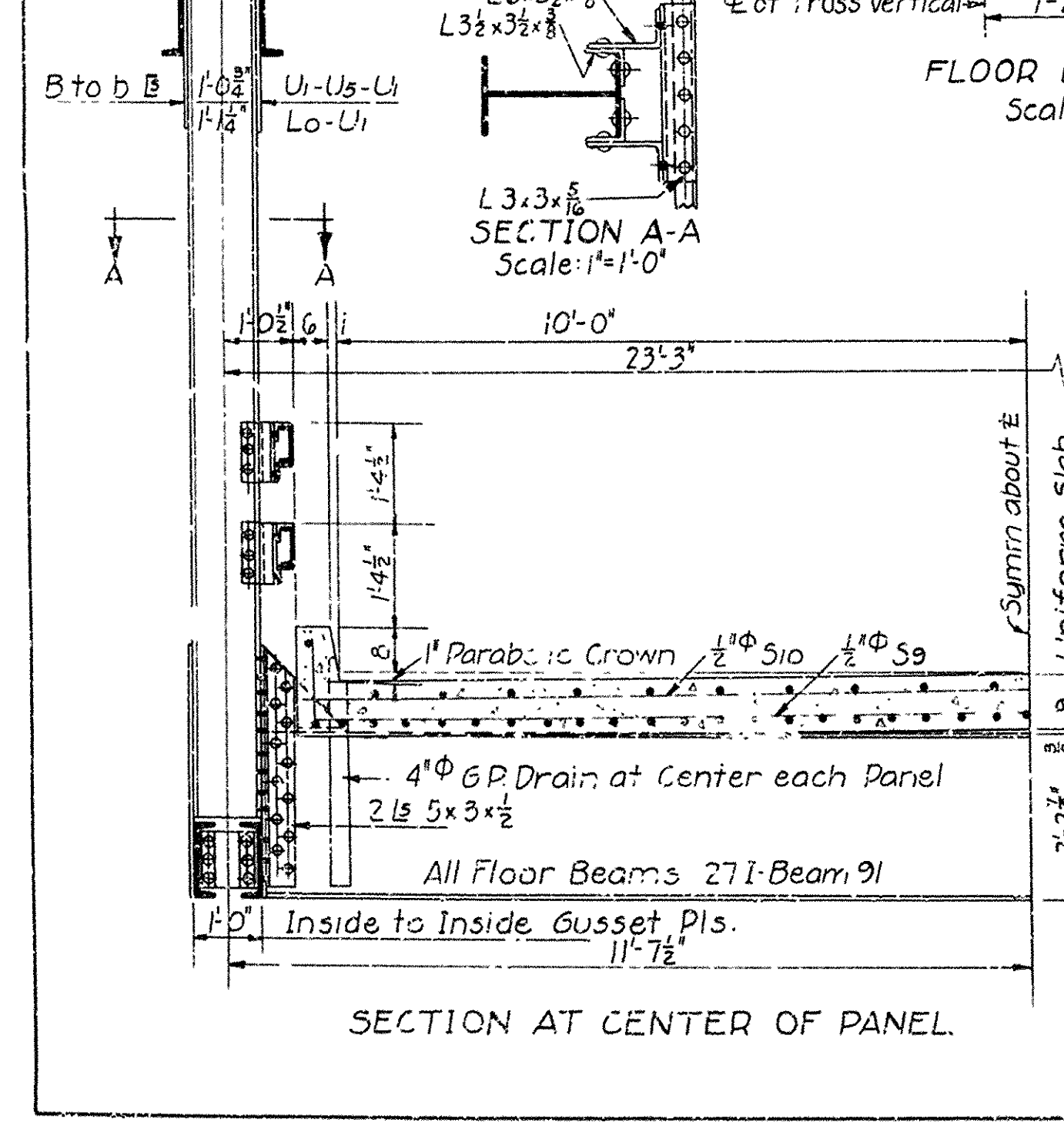
Concrete = 750#/in²

| | | | | |
|---------|--------|---------|--------|--------|
| D=-230 | D=-229 | D=-224 | D=-202 | D=-176 |
| L=111.4 | L=110 | L=106.1 | L=96.7 | L=84.3 |
| I=236 | I=231 | I=222 | I=203 | I=177 |
| T=365 | T=362 | T=352 | T=319 | T=278 |



QUANTITIES

| ITEM | 110'-0" Span Used in General, End, Adjacent to Steel Span to Fill Concrete Approach | 110'-0" Span, Expan End, Adjacent to Concrete Approach | 110'-0" Span, Fixed End, Adjacent to Concrete Approach |
|--------------------|---|--|--|
| Glass 'S' Concrete | 687 C.Y. | 687 C.Y. | 691 C.Y. |
| Reinforcing Steel | 13,856 Lbs. | 13,856 Lbs. | 13,921 Lbs. |
| Structural Steel | 112,706 Lbs. | 113,225 Lbs. | 111,978 Lbs. |



GENERAL NOTES:

Rivets 3/4"; open holes 1 1/16"; in flanges of GB, 5/8" rivets, 1/16" open holes to be sub-punched to 3/16" and reamed to size while truss is assembled. This applies to all holes in truss connections as well as shop rivets. All field connections shall be riveted.

Floor beam connections shall be sub-punched 3/16" and reamed to a metal templet.

All floor beams to be milled to exact length after framing angles have been riveted.

Floor slab: Concrete to be Class 'S'. One inch has been added for wear.

Shop paint: After being completely assembled and shop work is finished, all pieces shall be given one coat of red lead and raw linseed oil before shipment.

Field paint: First coat, white lead tinted with lamp black. Second coat, aluminum paint.

Camber: Trusses shall be cambered to fit the vertical curve shown on layout sheet as well as camber required for dead load only.

Gas pipe drains shall be paid for at unit price bid for structural steel, and shall be painted same as structural steel.

Masonry plates shall be finally seated on three layers of burlap saturated with red lead. This work and material to be included in price bid for structural steel.

Shapes of equal or greater strength may be substituted for structural shapes shown, payment, however, will be based on the weight of shapes shown or actually used, whichever is the lesser.

This drawing shows general features of design only.

Shop drawings shall be made in compliance with Specifications, and be submitted and approved before fabrication is begun.

Specifications: Arkansas Standard Road & Bridge Specifications, adopted May 30th, 1925 and revised.

**STANDARD 110'-0" LOW TRUSS SPAN
SPECIAL CLEARANCE
20'-0" CLEAR ROADWAY
ARKANSAS STATE HIGHWAY COMMISSION
LITTLE ROCK, ARK.**

Drawn by: W.C.H. Date: 8-24-34
Traced by: A Date: 8-31-34 Scale: 1/2"=1'-0"
Checked by: Date: Exceptions noted.
BRIDGE NO. 1789 DRWG NO. 3521

N.B. Lawler
BRIDGE ENGINEER