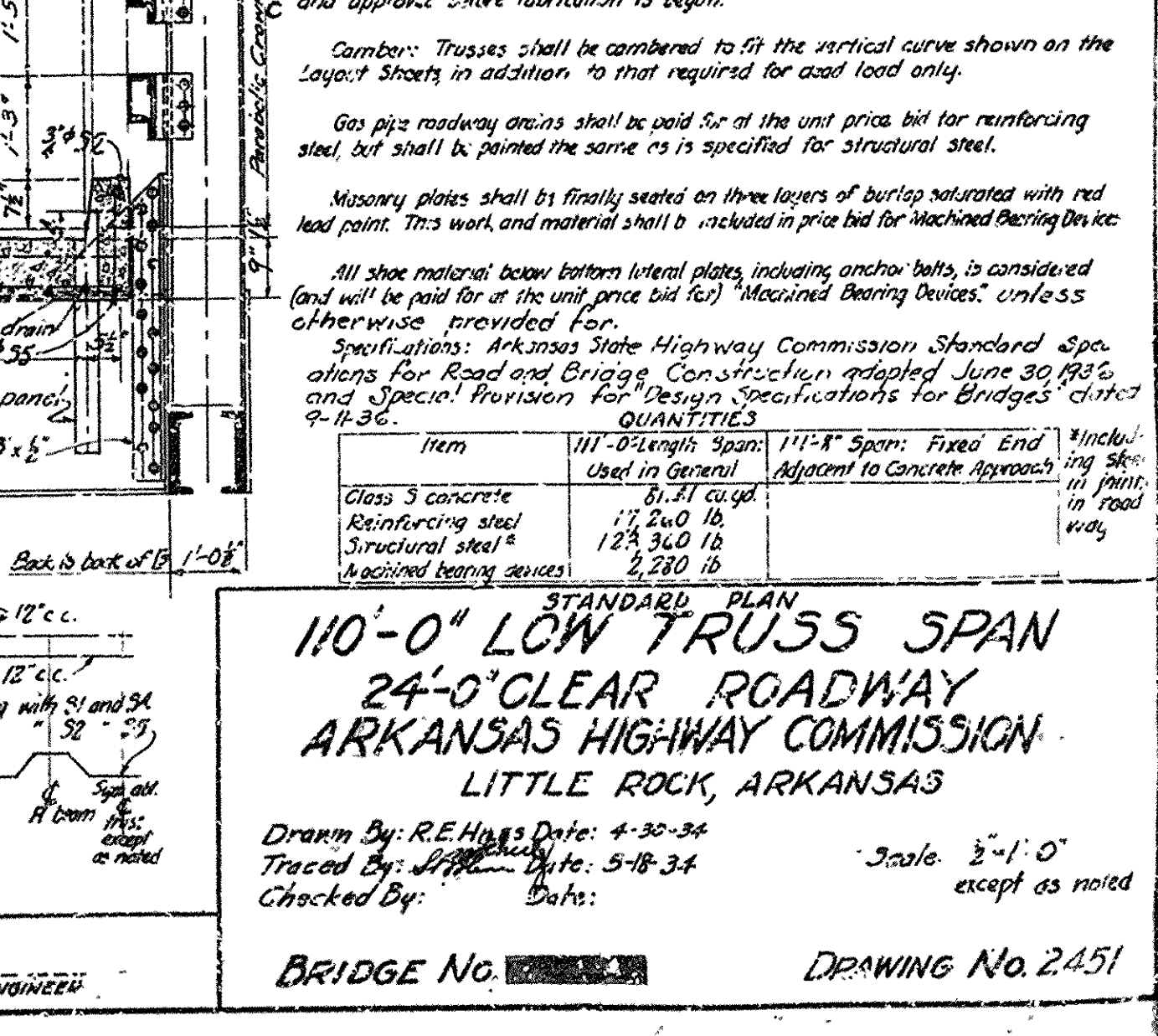
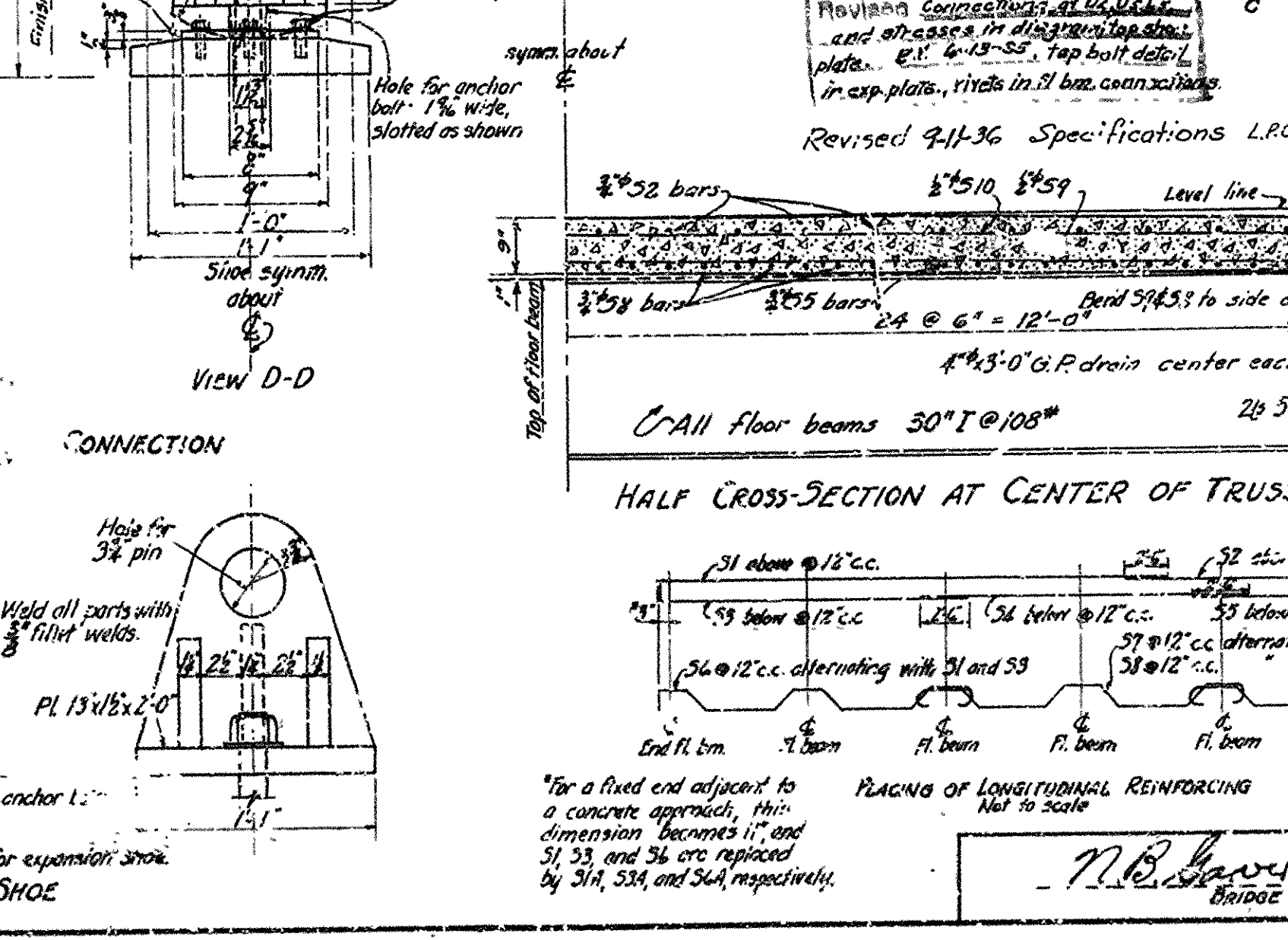
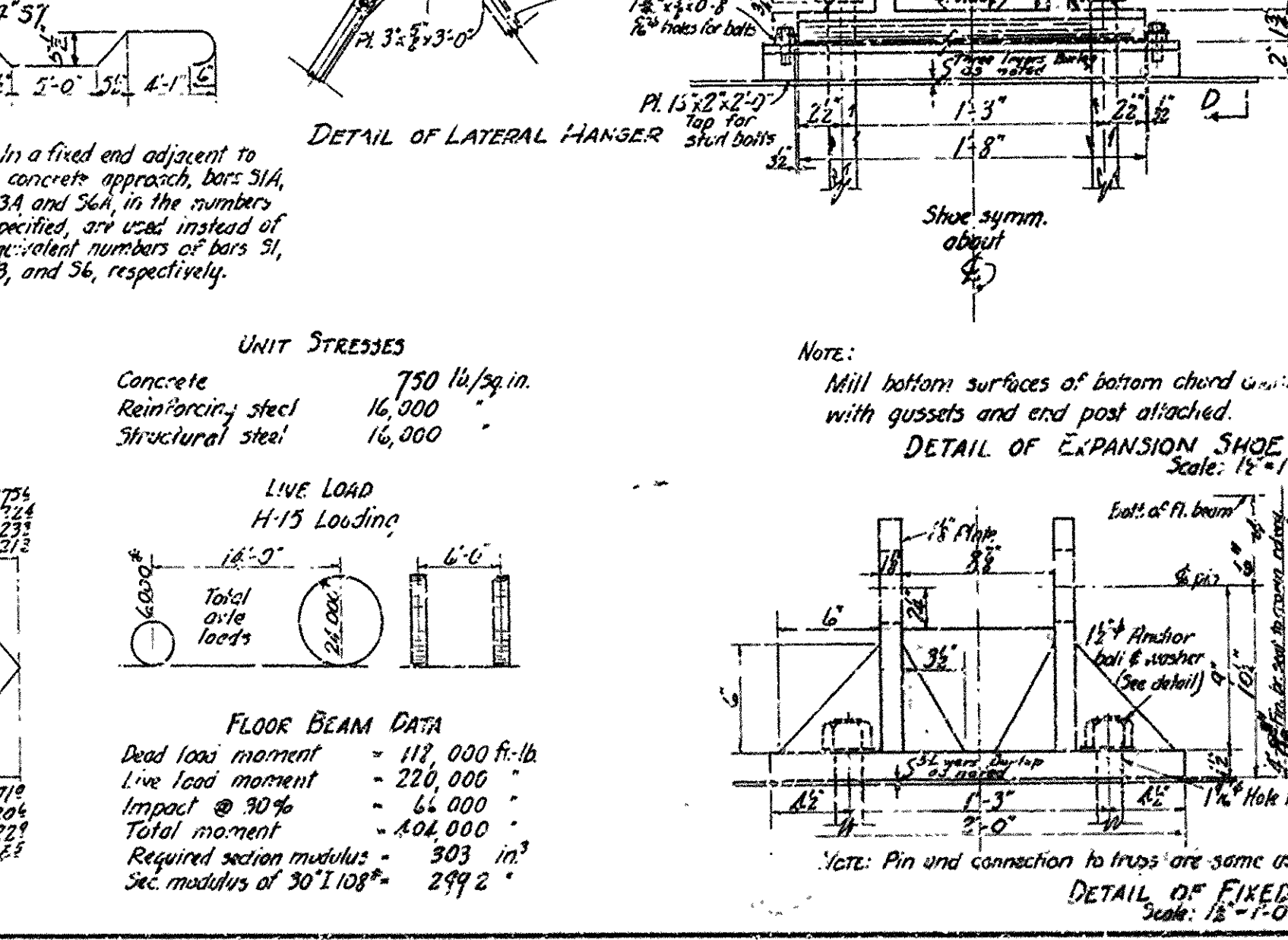
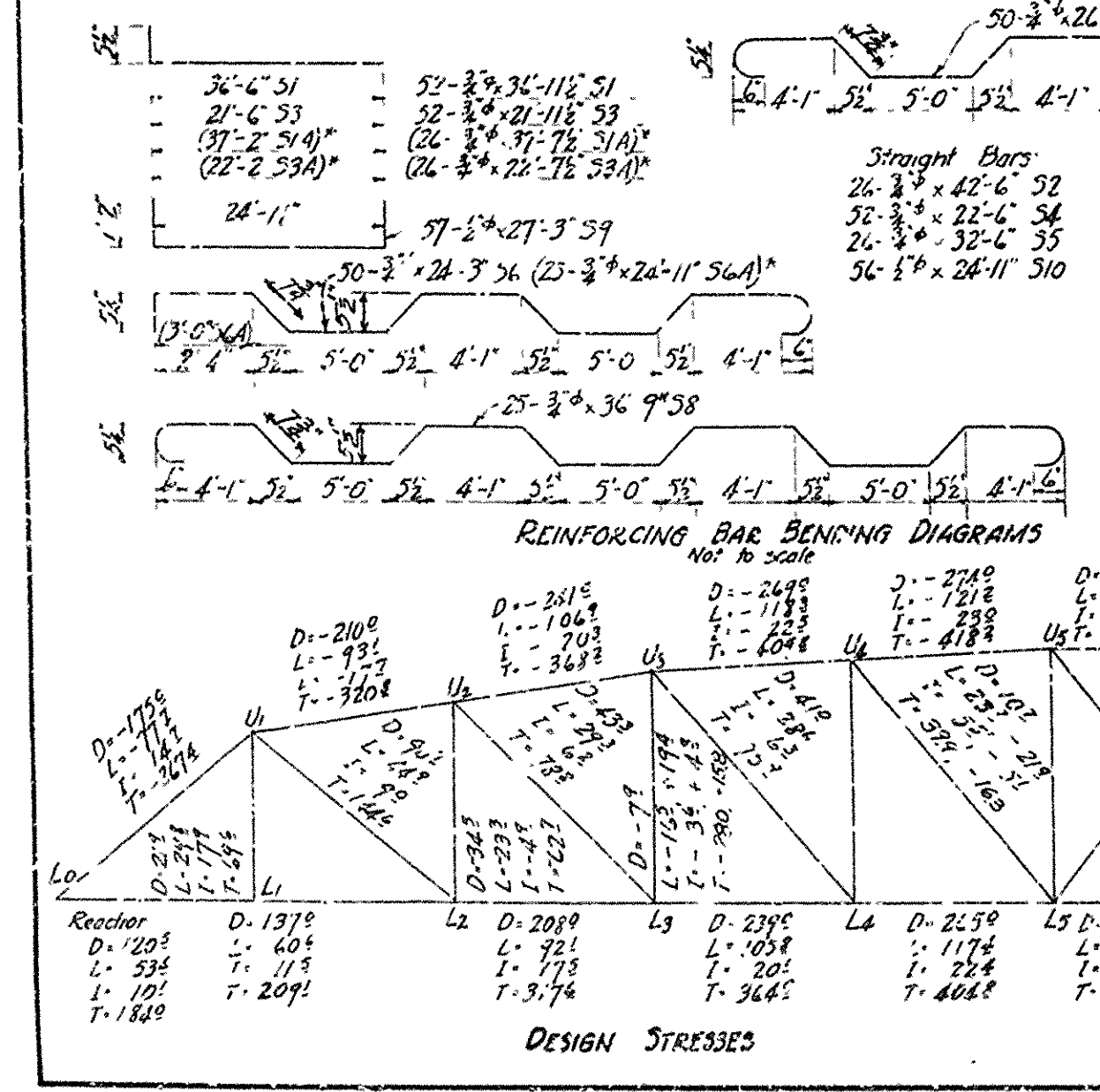
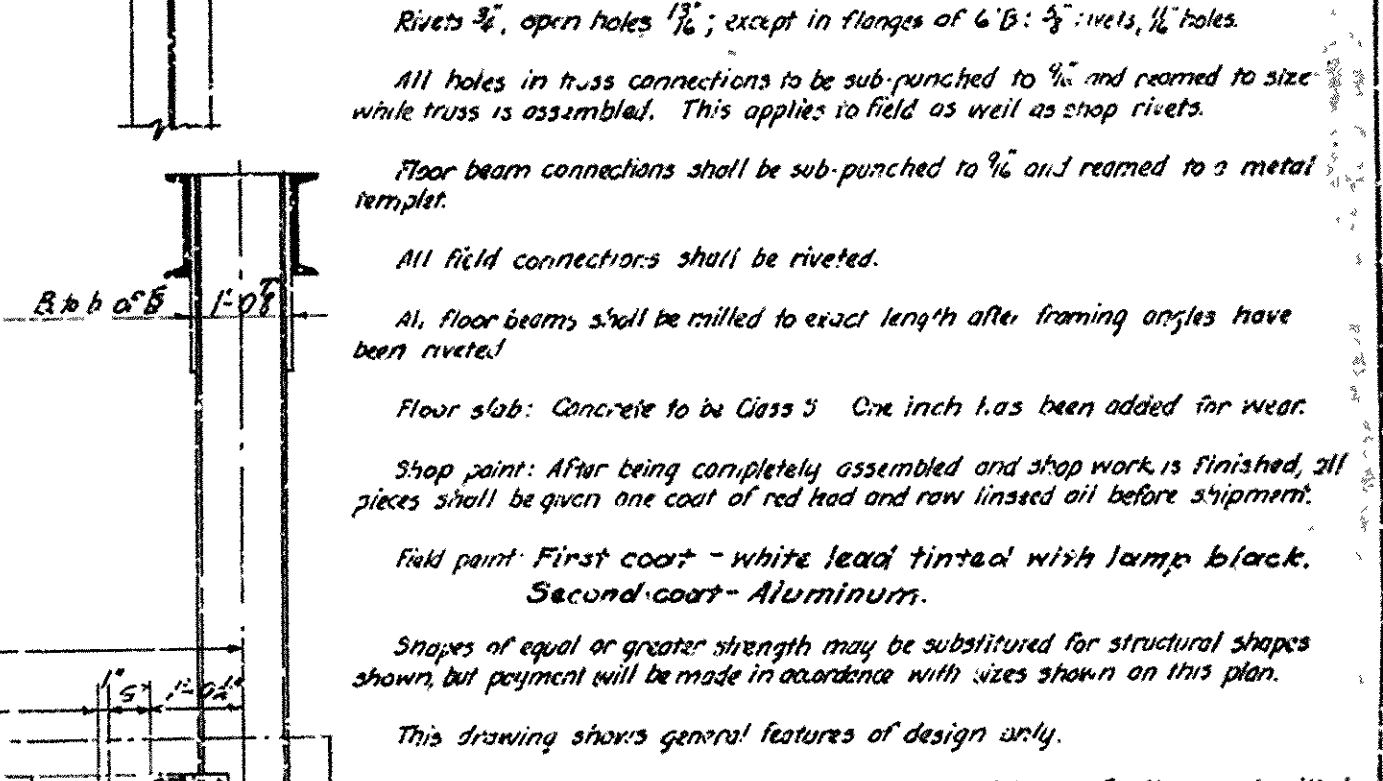
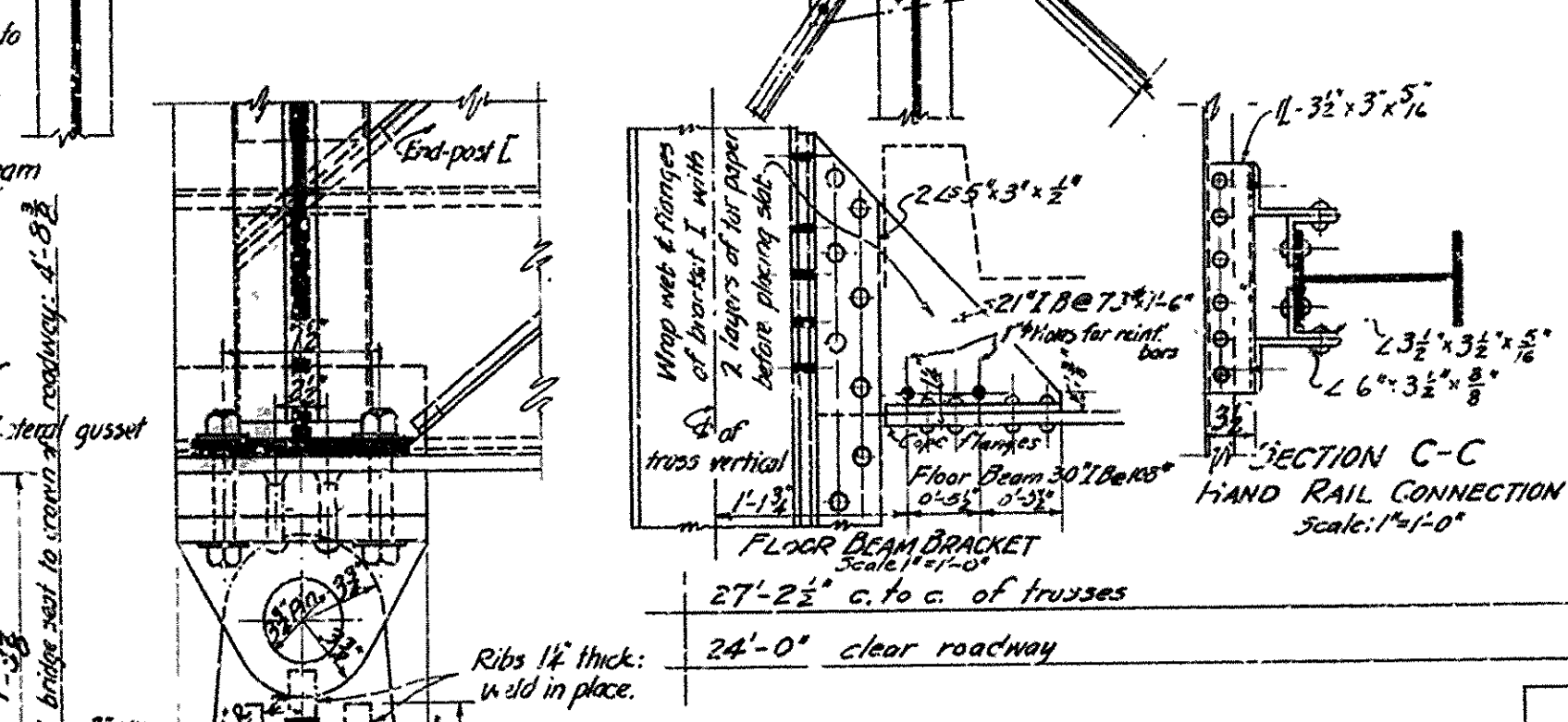
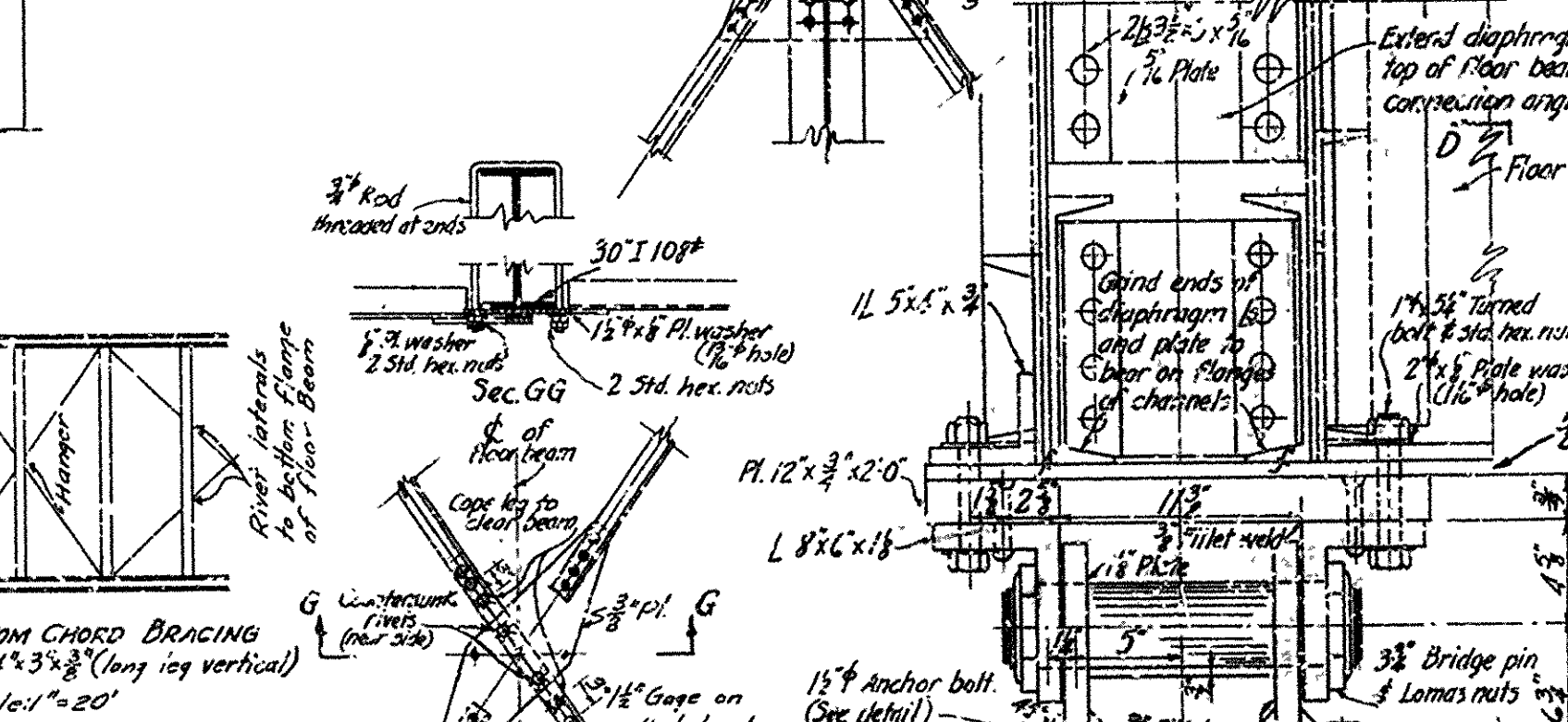
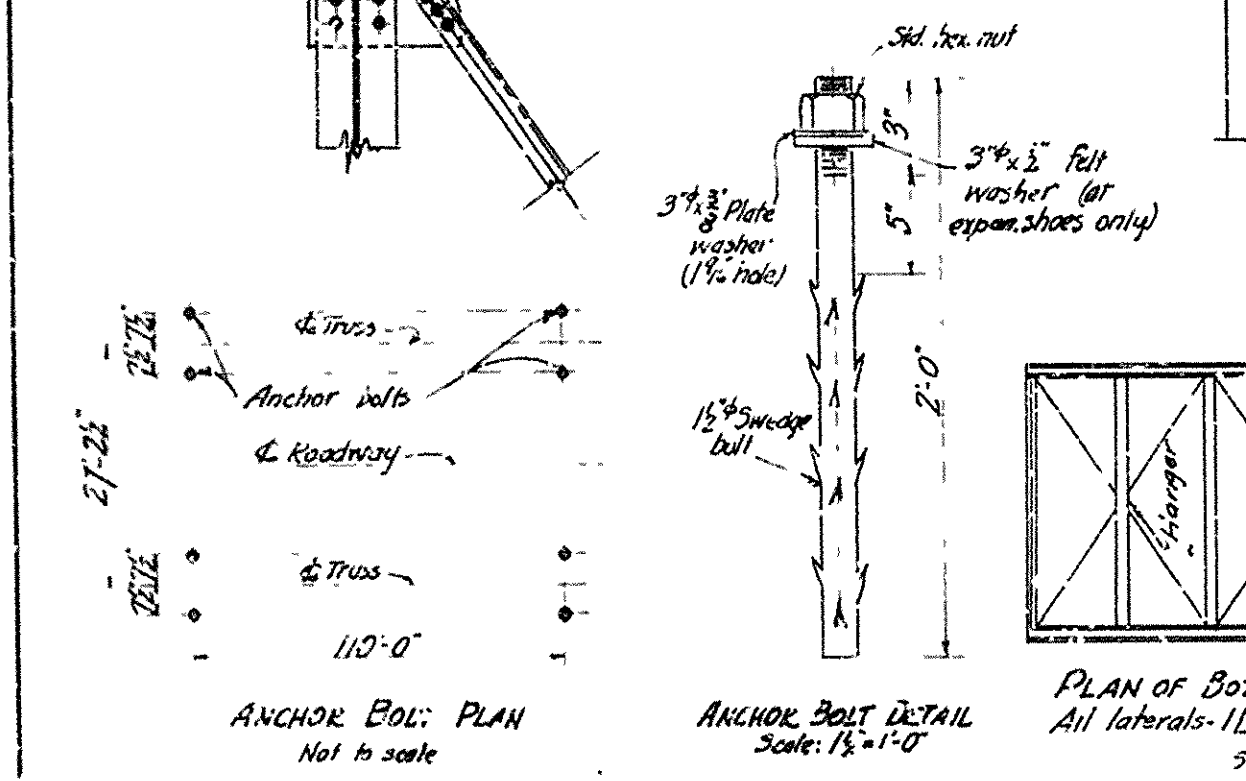
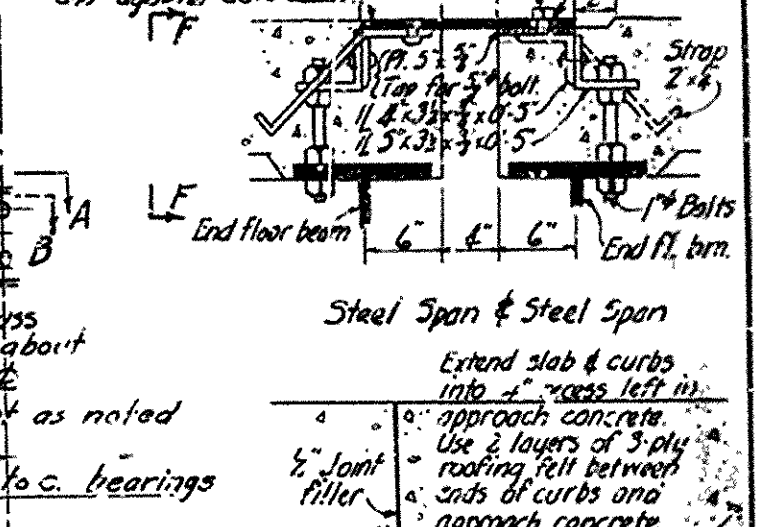
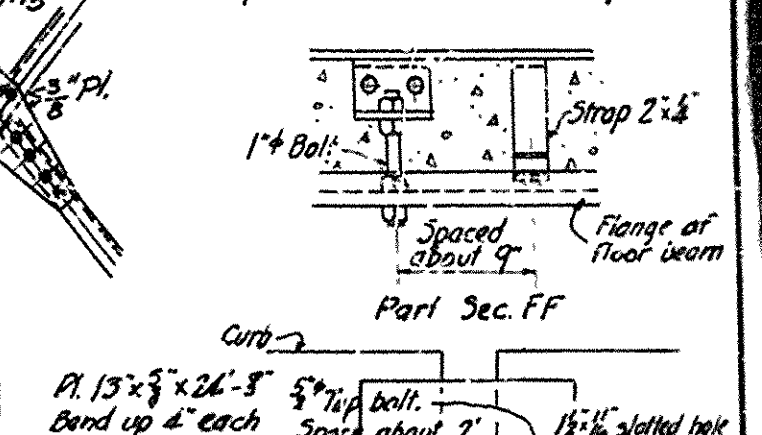
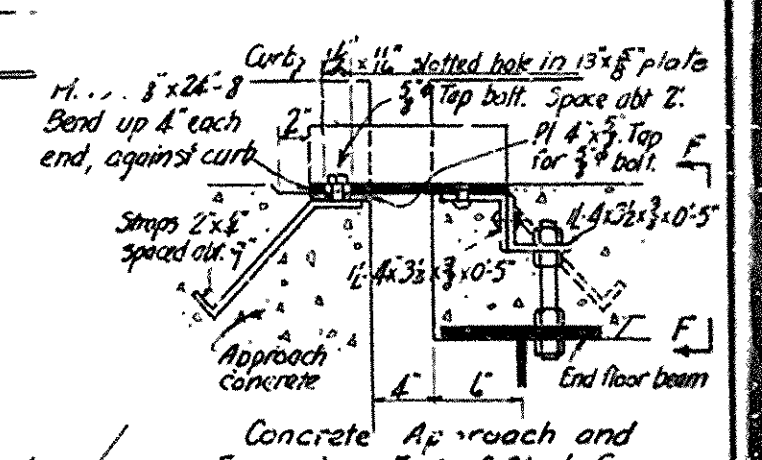
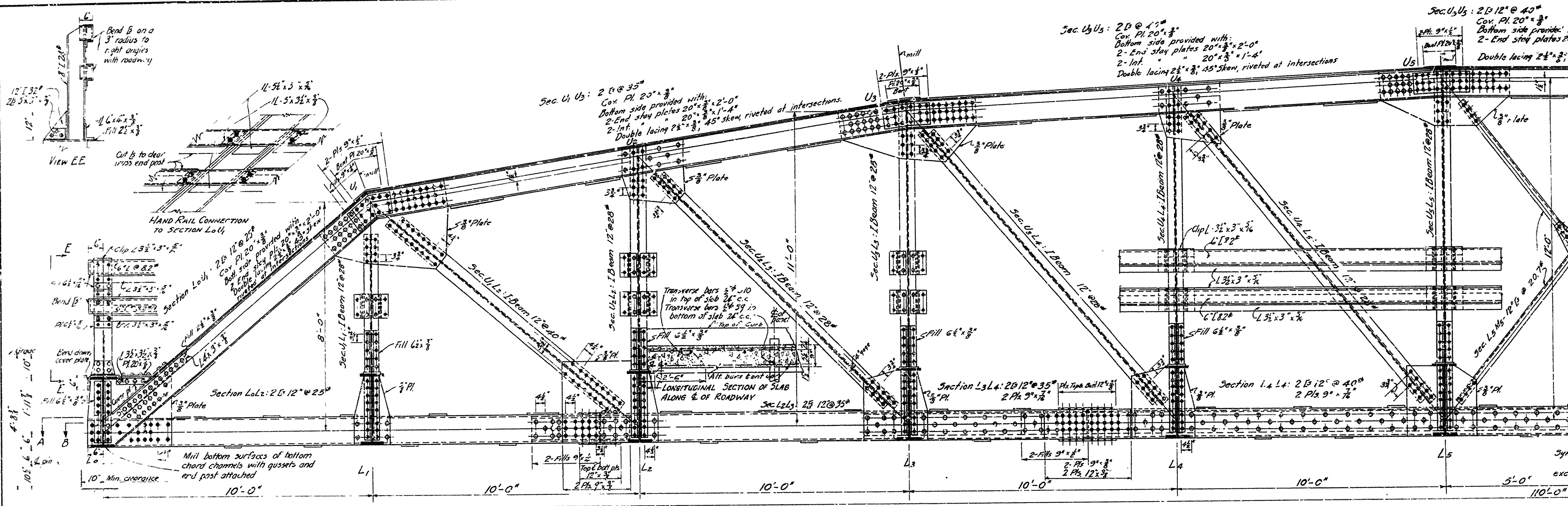


| DIST. NO. | STATE | U.S. ROAD PROJ. NO. | FISCAL YEAR | SHEET NO. | TOTAL SHEETS |
|-----------|-------|---------------------|-------------|-----------|--------------|
| 6         | ARK.  |                     |             | 11        | 39           |



DESIGN STRESSES

|         |        |       |        |        |        |       |        |       |        |
|---------|--------|-------|--------|--------|--------|-------|--------|-------|--------|
| Reactor | D-1375 | L2    | D-2080 | L3     | D-2395 | L4    | D-2150 | L5    | D-2770 |
| L-1203  | L-601  | L-321 | L-1058 | L-1174 | L-1204 | L-224 | L-229  | L-229 | L-229  |
| L-1201  | L-118  | L-178 | L-201  | L-224  | L-229  | L-224 | L-229  | L-229 | L-229  |
| L-1202  | L-209  | L-368 | L-368  | L-368  | L-368  | L-368 | L-368  | L-368 | L-368  |

Required section modulus = 303 in<sup>3</sup>  
 Sec. modulus of 30" I 108" = 299 in<sup>3</sup>

NOTE: Pin and connection to truss are same as for expansion shoe.

BRIDGE No. [ ] DRAWING No. 2451