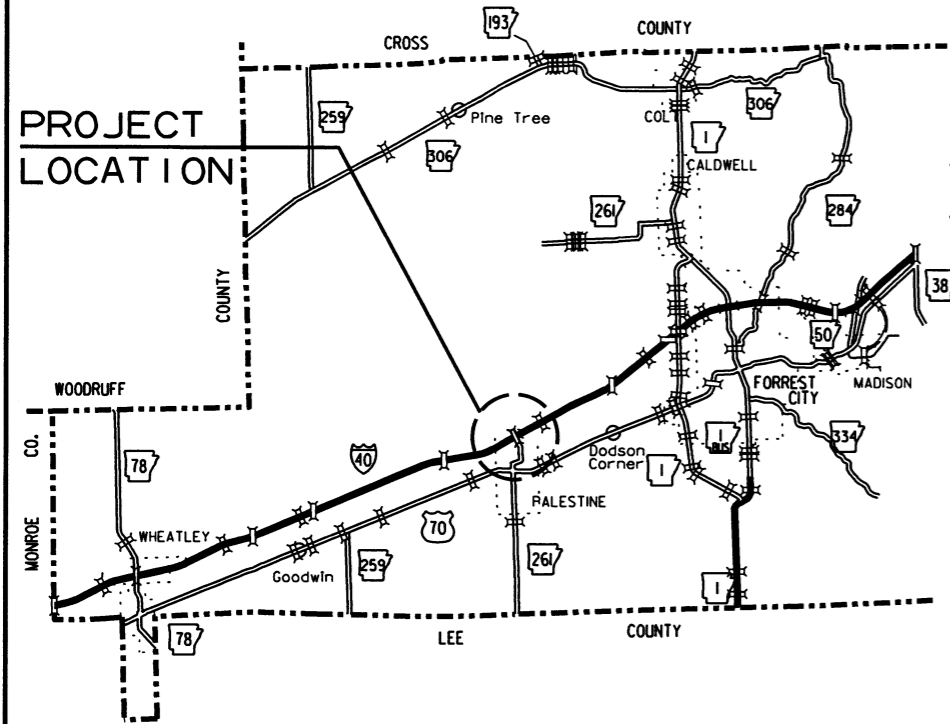


ARKANSAS STATE HIGHWAY AND TRANSPORTATION DEPARTMENT  
CONSTRUCTION PLANS FOR STATE HIGHWAY

DATE REVISED	DATE FILMED	DATE REVISED	DATE FILMED	FED. RD. DIST. NO.	STATE	FED. AID PROJ. NO.	SHEET NO.	TOTAL SHEETS
				6	ARK.			
				JOB NO.		#0586	1	130
				② HWY. 261 STR. & APPRS. (S)				



VICINITY MAP

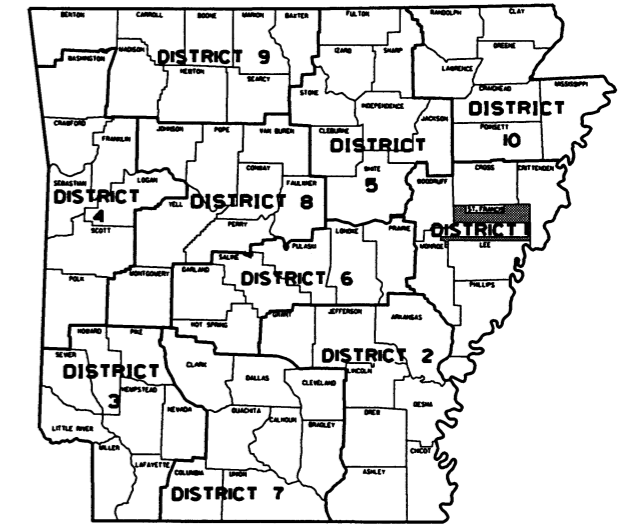
# HWY. 261 STR. & APPRS. (S)

ST. FRANCIS COUNTY

ROUTE 261 SECTION 2

## JOB 110586

FED. AID PROJ. NHPP-0068(38)



ARK. HWY. DIST. NO. 1

NOT TO SCALE

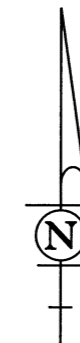
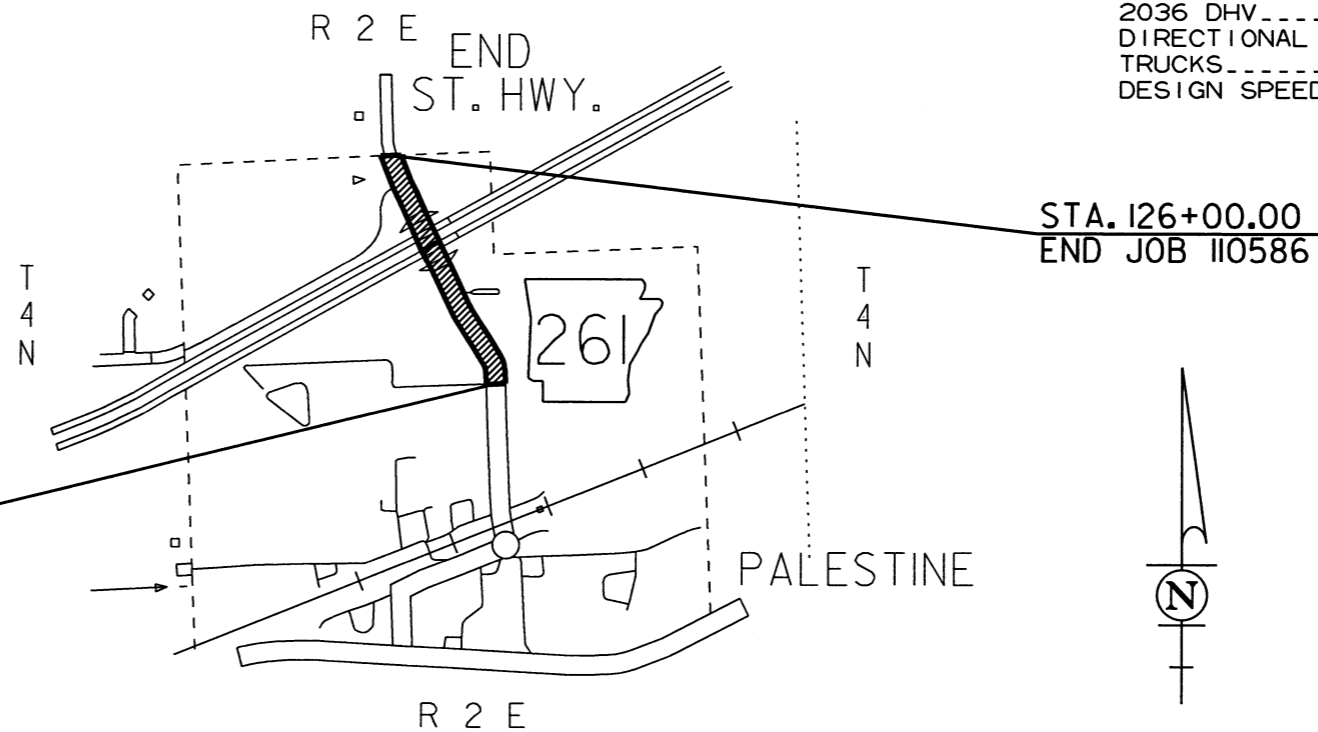
DESIGN TRAFFIC DATA

DESIGN YEAR	.....2036
2016 ADT	.....3,000
2036 ADT	.....3,600
2036 DHV	.....396
DIRECTIONAL DISTRIBUTION	.....0.60
TRUCKS	.....5%
DESIGN SPEED	.....40 MPH

BRIDGE DATA

① HWY. 261 OVER INTERSTATE 40
STA. 114+17.92 BR. END
296'-2" BRIDGE LENGTH
40'-0" CLEAR ROADWAY
294'-0" CONT. COMP. W-BEAM (60'-87'-87'-60')
BR. NO. 07232
STA. 117+14.08 BR. END

STA. 100+50.00  
BEGIN JOB 110586  
LOG MILE 5.23



APPROVED



9-30-16

DEPUTY DIRECTOR  
AND CHIEF ENGINEER

BEGINNING OF PROJECT	MID POINT OF PROJECT	END OF PROJECT
LATITUDE = N 34°58'49"	LATITUDE = N 34°58'59"	LATITUDE = N 34°59'10"
LONGITUDE = W 90°54'10"	LONGITUDE = W 90°54'16"	LONGITUDE = W 90°54'21"

GROSS LENGTH OF PROJECT	2550.00	FEET	OR	0.483	MILES
NET " " ROADWAY	2253.84	"	"	0.427	"
NET " " BRIDGES	296.16	"	"	0.056	"
NET " " PROJECT	2550.00	"	"	0.483	"

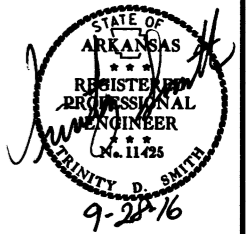
P.E. #0586

INDEX OF SHEETS

DATE REVISED	DATE FILMED	DATE REVISED	DATE FILMED	FED. RD. DIST. NO.	STATE	FED. AID PROJ. NO.	SHEET NO.	TOTAL SHEETS
				6	ARK.		2	130
				JOB NO.		110586		

SHEET NO.	TITLE	BRIDGE NO.	DRWG. NO.	DATE
1	TITLE SHEET			
2	INDEX OF SHEETS			
3	GOVERNING SPECIFICATIONS AND GENERAL NOTES			
4 - 8	TYPICAL SECTIONS OF IMPROVEMENT			
9 - 13	SPECIAL DETAILS			
14 - 16	TEMPORARY EROSION CONTROL DETAILS			
17 - 22	MAINTENANCE OF TRAFFIC DETAILS			
23	PERMANENT PAVEMENT MARKING DETAILS			
24 - 29	QUANTITIES			
30	SCHEDULE OF BRIDGE QUANTITIES	07232	53306	
31	SUMMARY OF QUANTITIES AND REVISIONS			
32 - 34	SURVEY CONTROL DETAILS			
35 - 42	PLAN AND PROFILE SHEETS			
43	LAYOUT OF BRIDGE HWY. 261 OVER INTERSTATE 40 (SHEET 1 OF 2)	07232	53307	
44	LAYOUT OF BRIDGE HWY. 261 OVER INTERSTATE 40 (SHEET 2 OF 2)	07232	53308	
45	DETAILS OF END BENTS HWY. 261 OVER INTERSTATE 40 (SHEET 1 OF 3)	07232	53309	
46	DETAILS OF END BENTS HWY. 261 OVER INTERSTATE 40 (SHEET 2 OF 3)	07232	53310	
47	DETAILS OF END BENTS HWY. 261 OVER INTERSTATE 40 (SHEET 3 OF 3)	07232	53311	
48	DETAILS OF STATE OF ARKANSAS FORM INSERT	07232	53312	
49	DETAILS OF BENTS 2 & 4 HWY. 261 OVER INTERSTATE 40	07232	53313	
50	DETAILS OF BENT 3 HWY. 261 OVER INTERSTATE 40	07232	53314	
51	DETAILS COMMON TO INTERMEDIATE BENTS HWY. 261 OVER INTERSTATE 40	07232	53315	
52	DETAILS OF CONCRETE FILLED STEEL SHELL PILES AND PILE ENCASEMENTS	07232	53316	
53	DETAILS OF ELASTOMERIC BEARINGS HWY. 261 OVER INTERSTATE 40	07232	53317	
54	DETAILS OF 294'-0" CONTINUOUS W-BEAM UNIT HWY. 261 OVER INTERSTATE 40 (SHEET 1 OF 7)	07232	53318	
55	DETAILS OF 294'-0" CONTINUOUS W-BEAM UNIT HWY. 261 OVER INTERSTATE 40 (SHEET 2 OF 7)	07232	53319	
56	DETAILS OF 294'-0" CONTINUOUS W-BEAM UNIT HWY. 261 OVER INTERSTATE 40 (SHEET 3 OF 7)	07232	53320	
57	DETAILS OF 294'-0" CONTINUOUS W-BEAM UNIT HWY. 261 OVER INTERSTATE 40 (SHEET 4 OF 7)	07232	53321	
58	DETAILS OF 294'-0" CONTINUOUS W-BEAM UNIT HWY. 261 OVER INTERSTATE 40 (SHEET 5 OF 7)	07232	53322	
59	DETAILS OF 294'-0" CONTINUOUS W-BEAM UNIT HWY. 261 OVER INTERSTATE 40 (SHEET 6 OF 7)	07232	53323	
60	DETAILS OF 294'-0" CONTINUOUS W-BEAM UNIT HWY. 261 OVER INTERSTATE 40 (SHEET 7 OF 7)	07232	53324	
61	DETAILS OF PARAPET RAIL	07232	53325	
62	DETAILS OF TYPE SPECIAL 1 APPROACH SLAB	07232	53326	
63	STANDARD DETAILS FOR EMBANKMENT CONSTRUCTION AND BACKFILL AT BRIDGE ENDS		55000	2-27-14
64	STANDARD DETAILS FOR DUMPED RIPRAP AND FILTER BLANKET AND COMPUTING EXCAVATION FOR STRUCTURES		55001	2-27-14
65	STANDARD DETAILS FOR CONCRETE RIPRAP		55002	2-27-14
66	STANDARD DETAILS FOR PERMANENT STEEL BRIDGE DECK FORMS FOR STEEL & CONCRETE GIRDER SPANS		55005	3-24-16
67	STANDARD DETAILS FOR TYPE D BRIDGE NAME PLATE		55010	1-14-15
68	STANDARD DETAILS FOR TYPE C APPROACH GUTTERS		55030C	2-27-14
69	CONCRETE DITCH PAVING		CDP-1	11-17-10
70	CURBING DETAILS		CG-1	11-29-07
71	DETAILS OF DRIVEWAYS & ISLANDS		DR-1	2-27-14
72	FLARED END SECTION		FES-1	10-18-96
73	FLARED END SECTION		FES-2	10-18-96
74	DETAILS OF DROP INLETS AND SPILLWAY OUTLET		FPC-9N	7-02-98
75	GUARD CABLE		GC-1	10-18-96
76	GUARD RAIL DETAILS		GR-8	7-14-10
77	GUARD RAIL DETAILS		GR-9	4-17-08
78	GUARD RAIL DETAILS		GR-9A	4-17-08
79	GUARD RAIL DETAILS		GR-10	7-14-10
80	GUARD RAIL DETAILS		GR-10A	7-14-10
81	CONCRETE BARRIER WALL (PIER PROTECTION TYPE A)		GR-11	7-14-10
82	MAILBOX DETAILS		MB-1	11-18-04
83	CONCRETE PIPE CULVERT FILL HEIGHTS & BEDDING		PCC-1	2-27-14
84	METAL PIPE CULVERT FILL HEIGHTS & BEDDING		PCM-1	2-27-14
85	PLASTIC PIPE CULVERT (HIGH DENSITY POLYETHYLENE)		PCP-1	2-27-14
86	PLASTIC PIPE CULVERT (PVC F949)		PCP-2	2-27-14
87	PAVEMENT MARKING DETAILS		PM-1	5-12-16
88	PERMANENT PAVEMENT MARKING ON ACCESS CONTROLLED ROADWAYS		PM-2	9-12-13
89	DETAILS OF PIPE UNDERDRAIN		PU-1	4-10-03
90	TABLES AND METHOD OF SUPERELEVATION FOR ONE-WAY TRAFFIC		SE-1	1-09-87
91	TABLES AND METHOD OF SUPERELEVATION FOR TWO-WAY TRAFFIC		SE-2	10-18-96
92	DETAILS OF SPECIAL ITEMS		SI-1	9-12-13
93	STANDARD TRAFFIC CONTROLS FOR HIGHWAY CONSTRUCTION		TC-1	9-02-15
94	STANDARD TRAFFIC CONTROLS FOR HIGHWAY CONSTRUCTION		TC-2	9-02-15
95	STANDARD TRAFFIC CONTROLS FOR HIGHWAY CONSTRUCTION		TC-3	9-02-15
96	STANDARD TRAFFIC CONTROLS FOR HIGHWAY CONSTRUCTION-TEMPORARY PRECAST BARRIER		TC-4	2-27-14
97	STANDARD TRAFFIC CONTROLS FOR HIGHWAY CONSTRUCTION-TEMPORARY PRECAST BARRIER		TC-5	10-15-09
98	TEMPORARY EROSION CONTROL DEVICES		TEC-1	12-15-11
99	TEMPORARY EROSION CONTROL DEVICES		TEC-2	6-02-94
100	TEMPORARY EROSION CONTROL DEVICES		TEC-3	11-03-94
101	WIRE FENCE TYPE A AND B		WF-1	8-22-02
102	WIRE FENCE WATER GAPS		WF-2	4-20-79
103 - 130	CROSS SECTIONS			

2 INDEX OF SHEETS



NOTE: CROSS SECTIONS NOT NORMALLY INCLUDED IN PLANS SOLD TO PROSPECTIVE BIDDERS, BUT MAY BE HAD UPON REQUEST.

INDEX OF SHEETS

DATE REVISED	DATE FILMED	DATE REVISED	DATE FILMED	FED. DIST. NO.	STATE	FED. AID PROJ. NO.	SHEET NO.	TOTAL SHEETS
				6	ARK.			
						110586	3	130

2 GOVERNING SPECIFICATIONS & GENERAL NOTES

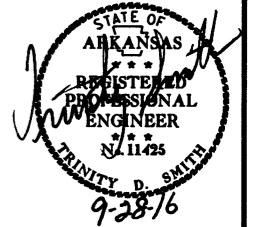
## GOVERNING SPECIFICATIONS

ARKANSAS STATE HIGHWAY COMMISSION STANDARD SPECIFICATIONS FOR HIGHWAY CONSTRUCTION, EDITION OF 2014, AND THE FOLLOWING SPECIAL PROVISIONS AND SUPPLEMENTAL SPECIFICATIONS:

NUMBER	TITLE
ERRATA	ERRATA FOR THE BOOK OF STANDARD SPECIFICATIONS
FHWA-1273	REQUIRED CONTRACT PROVISIONS FEDERAL-AID CONSTRUCTION CONTRACTS
FHWA-1273	SUPPLEMENT - EQUAL EMPLOYMENT OPPORTUNITY - NOTICE TO CONTRACTORS
FHWA-1273	SUPPLEMENT - SPECIFIC EQUAL EMPLOYMENT OPPORTUNITY RESPONSIBILITIES (23 U.S.C. 140)
FHWA-1273	SUPPLEMENT - EQUAL EMPLOYMENT OPPORTUNITY - GOALS AND TIMETABLES
FHWA-1273	SUPPLEMENT - EQUAL EMPLOYMENT OPPORTUNITY - FEDERAL STANDARDS
FHWA-1273	SUPPLEMENT - POSTERS AND NOTICES REQUIRED FOR FEDERAL-AID PROJECTS
FHWA-1273	SUPPLEMENT - WAGE RATE DETERMINATION
100-3	CONTRACTOR'S LICENSE
102-2	ISSUANCE OF PROPOSALS
108-1	LIQUIDATED DAMAGES
108-2	WORK ALLOWED PRIOR TO ISSUANCE OF WORK ORDER
303-1	AGGREGATE BASE COURSE
400-1	TACK COATS
410-1	CONSTRUCTION REQUIREMENTS AND ACCEPTANCE OF ASPHALT CONCRETE PLANT MIX COURSES
604-1	RETROREFLECTIVE SHEETING FOR TRAFFIC CONTROL DEVICES IN CONSTRUCTION ZONES
606-1	PIPE CULVERTS FOR SIDE DRAINS
620-1	MULCH COVER
JOB 110586	BIDDING REQUIREMENTS AND CONDITIONS
JOB 110586	BROADBAND INTERNET SERVICE FOR ASPHALT CONCRETE PLANT
JOB 110586	BROADBAND INTERNET SERVICE FOR FIELD OFFICE
JOB 110586	CARGO PREFERENCE ACT REQUIREMENTS
JOB 110586	CONCRETE DITCH PAVING
JOB 110586	DIRECT TENSION INDICATORS FOR HIGH STRENGTH BOLT ASSEMBLIES
JOB 110586	DISADVANTAGED BUSINESS ENTERPRISE BIDDER'S RESPONSIBILITIES
JOB 110586	EXTENSION FOR PIPE CULVERTS
JOB 110586	GEOSYNTHETIC INTERNAL REINFORCED EMBANKMENT CONSTRUCTION
JOB 110586	GOALS FOR DISADVANTAGED BUSINESS ENTERPRISE PARTICIPATION
JOB 110586	GUARD CABLE MOVED AND RECONSTRUCTED
JOB 110586	HIGH PERFORMANCE PAVEMENT MARKING
JOB 110586	MAINTENANCE OF TRAFFIC
JOB 110586	MANDATORY ELECTRONIC CONTRACT
JOB 110586	MANDATORY ELECTRONIC DOCUMENT SUBMITTAL
JOB 110586	NESTING SITES OF MIGRATORY BIRDS
JOB 110586	PARTNERING REQUIREMENTS
JOB 110586	PLASTIC PIPE
JOB 110586	PORTLAND CEMENT CONCRETE DRIVEWAY
JOB 110586	REMOVAL AND DISPOSAL OF WIRE ROPE SAFETY FENCE
JOB 110586	SCARIFYING CONCRETE PAVEMENT
JOB 110586	SHORING
JOB 110586	SHORING FOR CULVERTS
JOB 110586	SOIL STABILIZATION
JOB 110586	SPECIAL SAFETY REQUIREMENTS FOR BRIDGES
JOB 110586	STORM WATER POLLUTION PREVENTION PLAN
JOB 110586	SUBMISSION OF ASPHALT CONCRETE HOT MIX ACCEPTANCE TEST RESULTS
JOB 110586	TEMPORARY TERMINAL ANCHOR FOR WIRE ROPE SAFETY FENCE
JOB 110586	TEXTURED COATING FINISH
JOB 110586	TRAFFIC CONTROL DEVICES IN CONSTRUCTION ZONES
JOB 110586	UTILITY ADJUSTMENTS
JOB 110586	VALUE ENGINEERING
JOB 110586	WARM MIX ASPHALT
JOB 110586	WIRE ROPE SAFETY FENCE (WRSF) SPECIFICATIONS
JOB 110586	WIRE ROPE SAFETY FENCE (POST REPAIR)

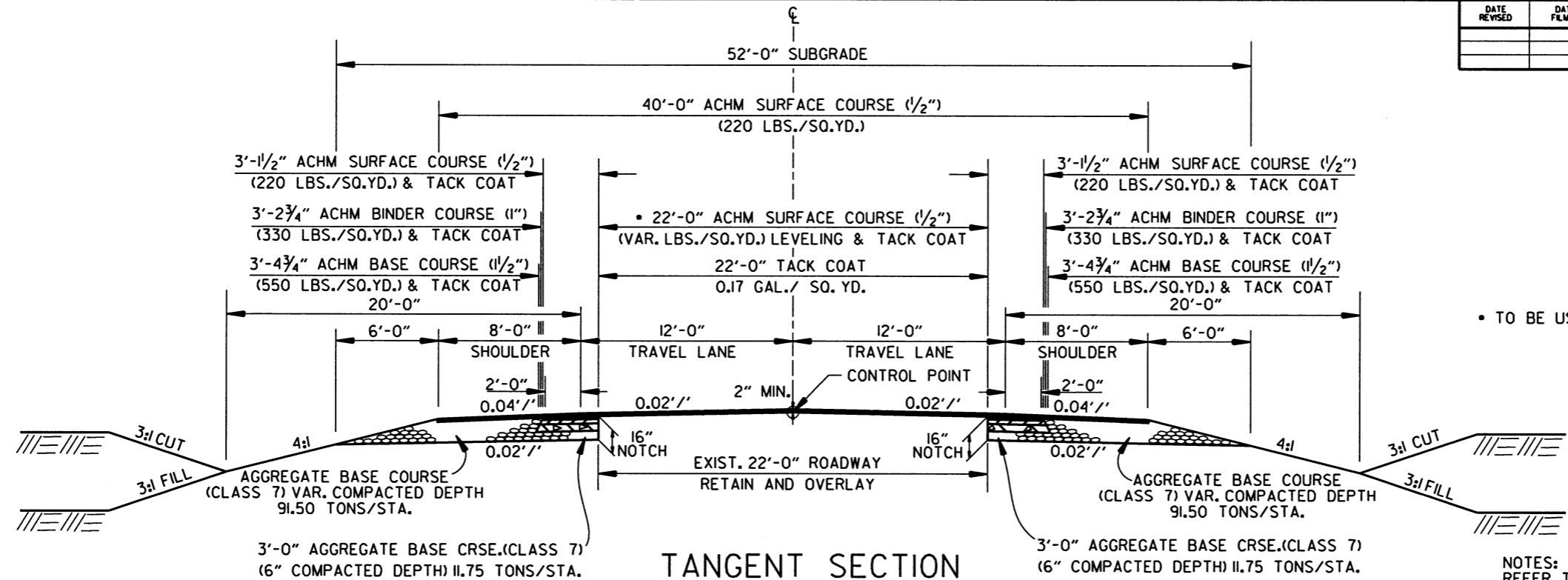
## GENERAL NOTES

- GRADE LINE DENOTES FINISHED GRADE WHERE SHOWN ON PLANS.
- ALL PIPE LINES, POWER, TELEPHONE, AND TELEGRAPH LINES TO BE MOVED OR LOWERED BY THE RESPECTIVE OWNERS AS PER AGREEMENT WITH SUCH OWNERS.
- ANY EQUIPMENT OR APPURTENANCE THAT INTERFERES WITH THE PROPOSED CONSTRUCTION AND WHICH MAY BE THE PROPERTY OF UTILITY SERVICE ORGANIZATIONS SHALL BE MOVED BY THE OWNERS UNLESS OTHERWISE PROVIDED.
- THE CONTRACTOR SHALL BE RESPONSIBLE FOR MAINTAINING U. S. MAILBOXES WITHIN THE PROJECT LIMITS IN SUCH A MANNER THAT THE PUBLIC MAY RECEIVE CONTINUED MAIL SERVICE. PAYMENT WILL BE CONSIDERED INCLUDED IN THE PRICE BID FOR THE VARIOUS BID ITEMS.
- ALL LAND MONUMENTS LOCATED WITHIN THE CONSTRUCTION AREA SHALL BE PROTECTED IN ACCORDANCE WITH SECTION 107.12 OF THE STANDARD SPECIFICATIONS.
- ALL TREES THAT DO NOT DIRECTLY INTERFERE WITH THE PROPOSED CONSTRUCTION SHALL BE SPARED AS DIRECTED BY THE ENGINEER. CARE AND DISCRETION SHALL BE USED TO INSURE THAT ALL TREES NOT TO BE REMOVED SHALL BE HARMED AS LITTLE AS POSSIBLE DURING THE CONSTRUCTION OPERATIONS.
- THE CONTRACTOR SHALL BE RESPONSIBLE FOR PROVIDING A FENCE TO CONTROL LIVESTOCK IN AREAS WHERE PASTURES ARE SEVERED. WIRE FENCE MAY BE CONSTRUCTED INITIALLY, OR IN LIEU THEREOF, THE CONTRACTOR, AT HIS OWN EXPENSE, MAY ELECT TO PROVIDE TEMPORARY FENCING SUITABLE TO CONTAIN LIVESTOCK.
- ALL FLEXIBLE BASE AND ASPHALTIC PAVEMENTS REMOVED SHALL BE PAID FOR UNDER THE ITEM NO. 210 - UNCLASSIFIED EXCAVATION.
- THE EXISTING ASPHALT PAVEMENT TO BE REMOVED FROM THE REMAINING PAVEMENT SHALL BE SEPARATED BY SAWING ALONG A NEAT LINE. AFTER SAWING, THE PAVEMENT TO BE REMOVED SHALL BE CAREFULLY REMOVED IN A MANNER THAT WILL NOT DAMAGE THE PAVEMENT THAT IS TO REMAIN. ANY DAMAGE OF THE ASPHALT PAVEMENT THAT IS TO REMAIN IN PLACE SHALL BE REPAIRED AT THE CONTRACTOR'S EXPENSE.



DATE REVISED	DATE FILMED	DATE REVISED	DATE FILMED	FED. RD. DIST. NO.	STATE	FED. AID PROJ. NO.	SHEET NO.	TOTAL SHEETS
				6	ARK.			
JOB NO. #0586							4	130

② TYPICAL SECTIONS OF IMPROVEMENT



**TANGENT SECTION  
NOTCH AND WIDEN**  
 STA. 101+50.00 - STA. 101+12.48  
 STA. 108+21.46 - STA. 110+88.35  
 STA. 121+58.13 - STA. 123+00.00

• TO BE USED IF AND WHERE DIRECTED BY THE ENGINEER

**NOTES:**  
 REFER TO CROSS SECTIONS FOR DEVIATION FROM THE NORMAL SLOPES. NO CHANGES SHALL BE MADE FROM THE PLANNED SLOPES WITHOUT THE APPROVAL OF THE ENGINEER.

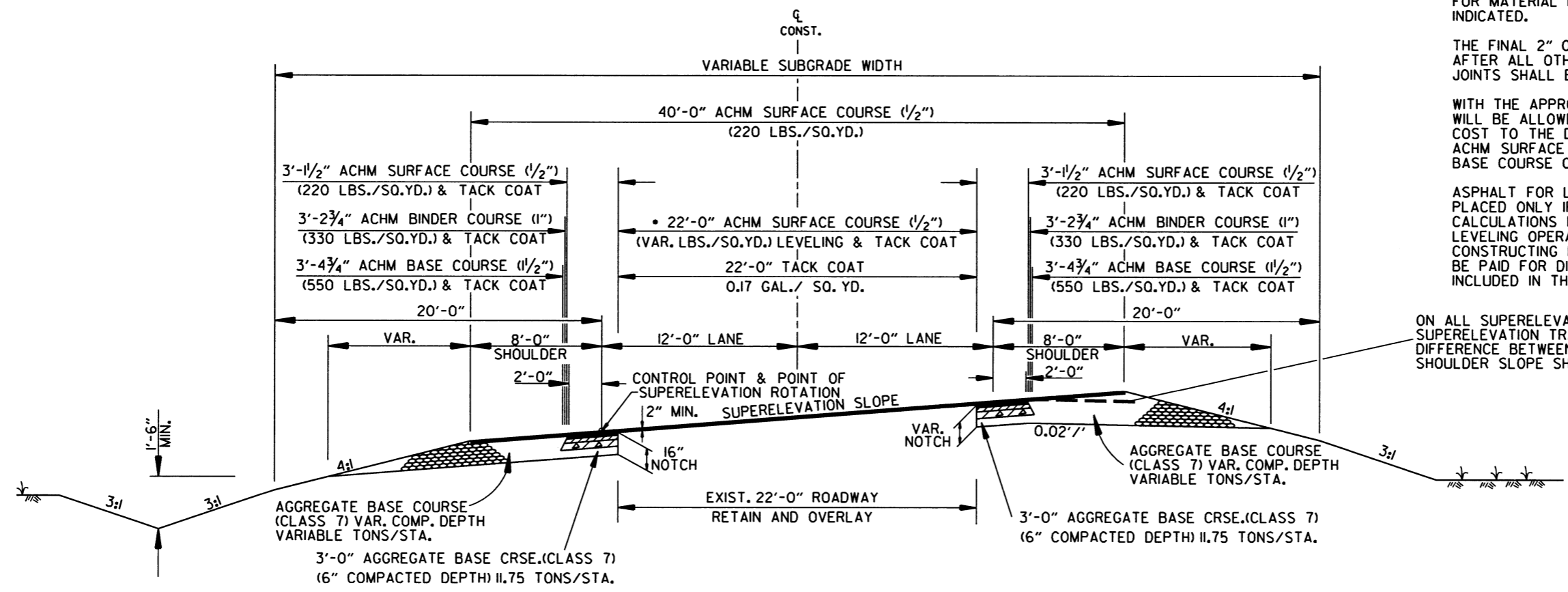
THE THICKNESS OF AGGREGATE BASE COURSE SHALL BE WITHIN PLUS OR MINUS ONE INCH OF THE PLAN THICKNESS SHOWN. THE CONTRACTOR WILL CORRECT ANY DEFICIENT THICKNESS THAT DOES NOT MEET TOLERANCE INDICATED. PAYMENT WILL NOT BE MADE FOR MATERIAL PLACED IN EXCESS OF THE TOLERANCE INDICATED.

THE FINAL 2" OF SURFACE COURSE IS TO BE PLACED AFTER ALL OTHER COURSES HAVE BEEN LAID. LONGITUDINAL JOINTS SHALL BE AT LANE LINES.

WITH THE APPROVAL OF THE ENGINEER, THE CONTRACTOR WILL BE ALLOWED TO SUBSTITUTE, AT NO ADDITIONAL COST TO THE DEPARTMENT, THE FIRST LIFT OF ACHM SURFACE COURSE (1/2") IN LIEU OF AGGREGATE BASE COURSE ON THE SHOULDERS.

ASPHALT FOR LEVELING OF EXISTING PAVEMENT SHALL BE PLACED ONLY IF AND WHERE DIRECTED BY THE ENGINEER. CALCULATIONS FOR THE AMOUNT OF LEVELING AND/OR LEVELING OPERATIONS SHALL BE PERFORMED BEFORE CONSTRUCTING NOTCH AND WIDENING. CALCULATIONS WILL NOT BE PAID FOR DIRECTLY, BUT PAYMENT WILL BE CONSIDERED INCLUDED IN THE VARIOUS PAY ITEMS.

ON ALL SUPERELEVATED CURVES AND THROUGH SUPERELEVATION TRANSITIONS, THE ALGEBRAIC DIFFERENCE BETWEEN PAVEMENT SLOPE AND SHOULDER SLOPE SHALL NOT EXCEED 0.08'/'.



**SUPERELEVATION - NOTCH & WIDEN**  
 STA. 101+12.48 - STA. 107+50.00

TYPICAL SECTIONS OF IMPROVEMENT

9/27/2016 R110586.DGN