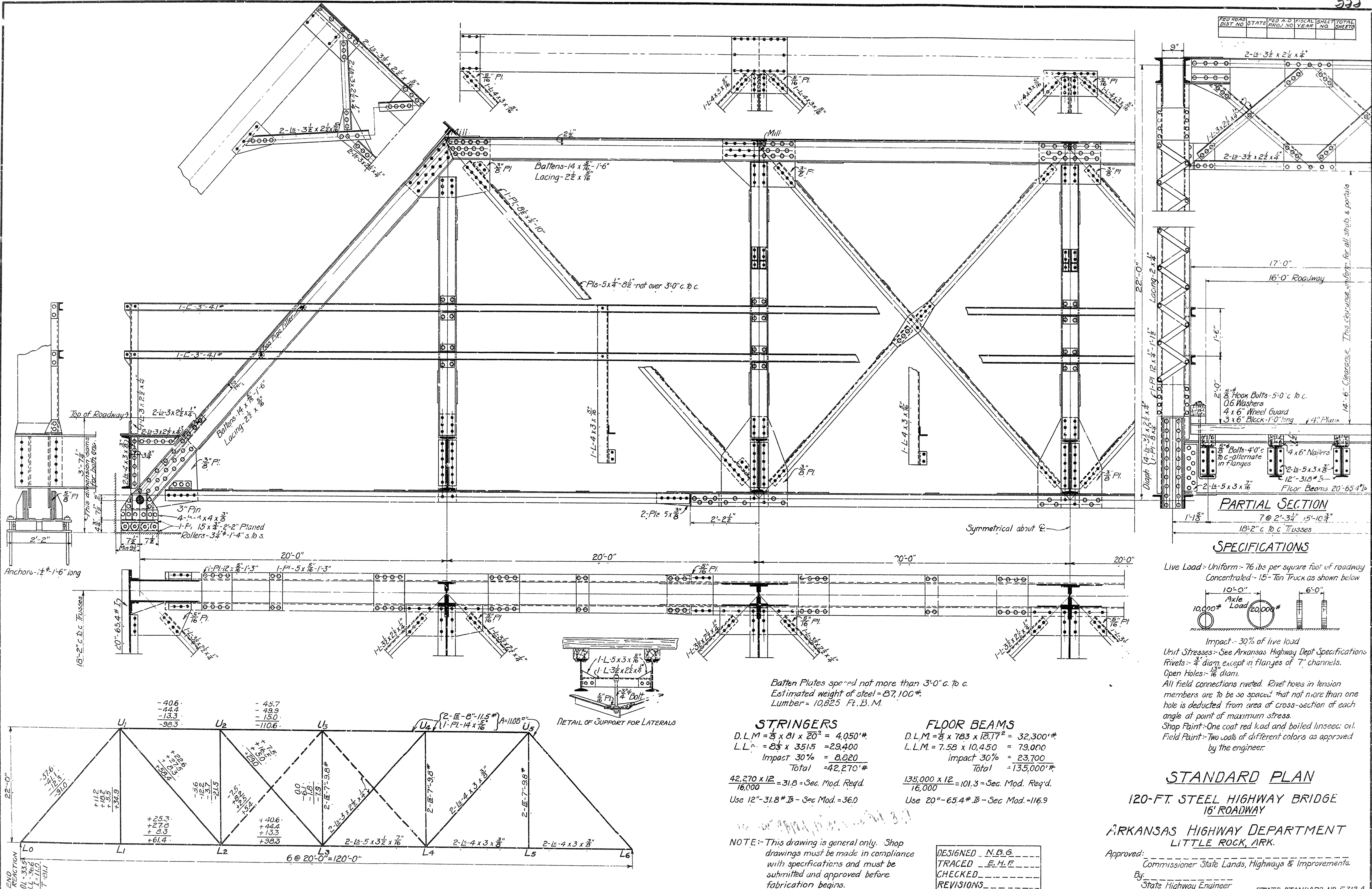


FED. ROAD DIST. NO.	STATE	FED. A. D. PROJ. NO.	FISCAL YEAR	SHEET NO.	TOTAL SHEETS

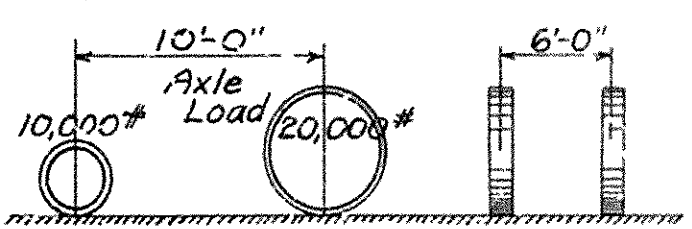


PARTIAL SECTION

7 @ 2'-3 1/4" 15'-10 3/4"
18'-2" c to c Trusses

SPECIFICATIONS

Live Load - Uniform - 76 lbs per square foot of roadway
Concentrated - 15-Ton Truck as shown below



Impact - 30% of live load
Unit Stresses - See Arkansas Highway Dept Specifications
Rivets - 3/4" diam, except in flanges of 7" channels.
Open Holes - 1/8" diam.
All field connections riveted. Rivet holes in tension members are to be so spaced that not more than one hole is deducted from area of cross-section of each angle at point of maximum stress.
Shop Paint - One coat red lead and boiled linseed oil.
Field Paint - Two coats of different colors as approved by the engineer.

STANDARD PLAN

120-FT. STEEL HIGHWAY BRIDGE
16' ROADWAY

ARKANSAS HIGHWAY DEPARTMENT
LITTLE ROCK, ARK.

Approved: _____
Commissioner State Lands, Highways & Improvements
By: _____
State Highway Engineer
Sept. 1922.

STATE STANDARD NO. F.312 A.

Batten Plates spaced not more than 3'-0" c. to c.
Estimated weight of steel = 87,100#.
Lumber = 10,825 Ft. B. M.

STRINGERS

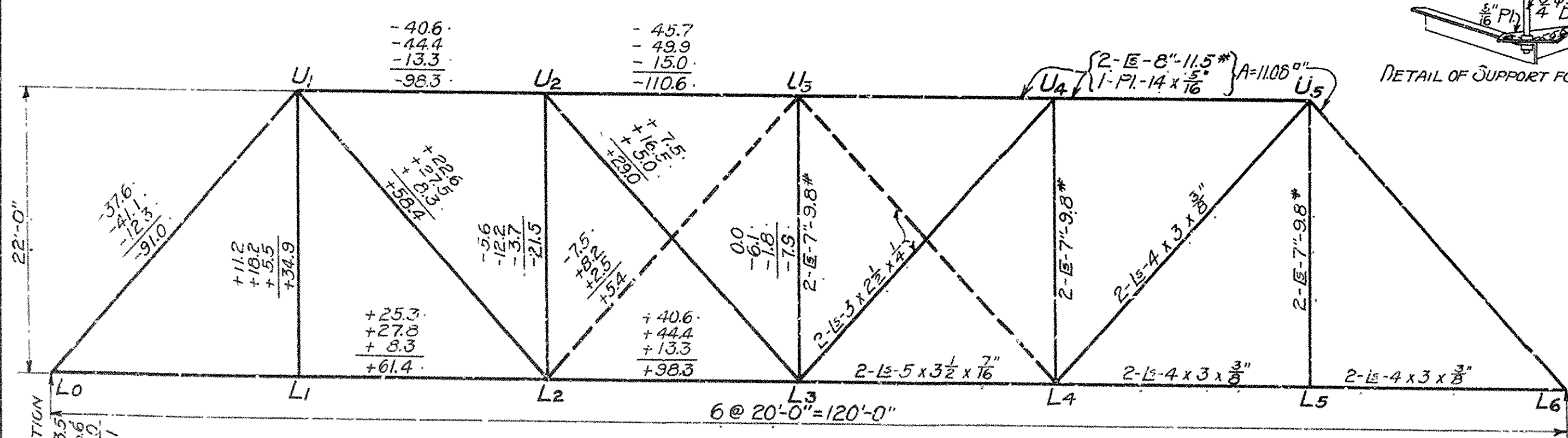
D.L.M. = 8 x 81 x 20² = 4,050#
L.L. = 8 1/2 x 351.5 = 29,400
Impact 30% = 8,820
Total = 42,270#
42,270 x 12 = 31.8 = Sec. Mod. Req'd.
16,000
Use 12" - 31.8# B - Sec Mod. = 36.0

FLOOR BEAMS

D.L.M. = 8 x 783 x 18.17² = 32,300#
L.L.M. = 7.58 x 10,450 = 79,000
Impact 30% = 23,700
Total = 135,000#
135,000 x 12 = 101.3 = Sec. Mod. Req'd.
16,000
Use 20" - 65.4# B - Sec Mod. = 116.9

NOTE - This drawing is general only. Shop drawings must be made in compliance with specifications and must be submitted and approved before fabrication begins.

DESIGNED	N.B.G.
TRACED	E.H.F.
CHECKED	
REVISIONS	



DETAIL OF SUPPORT FOR LATERALS

END REVISION
01 - 333
L.F. - 110
7-011