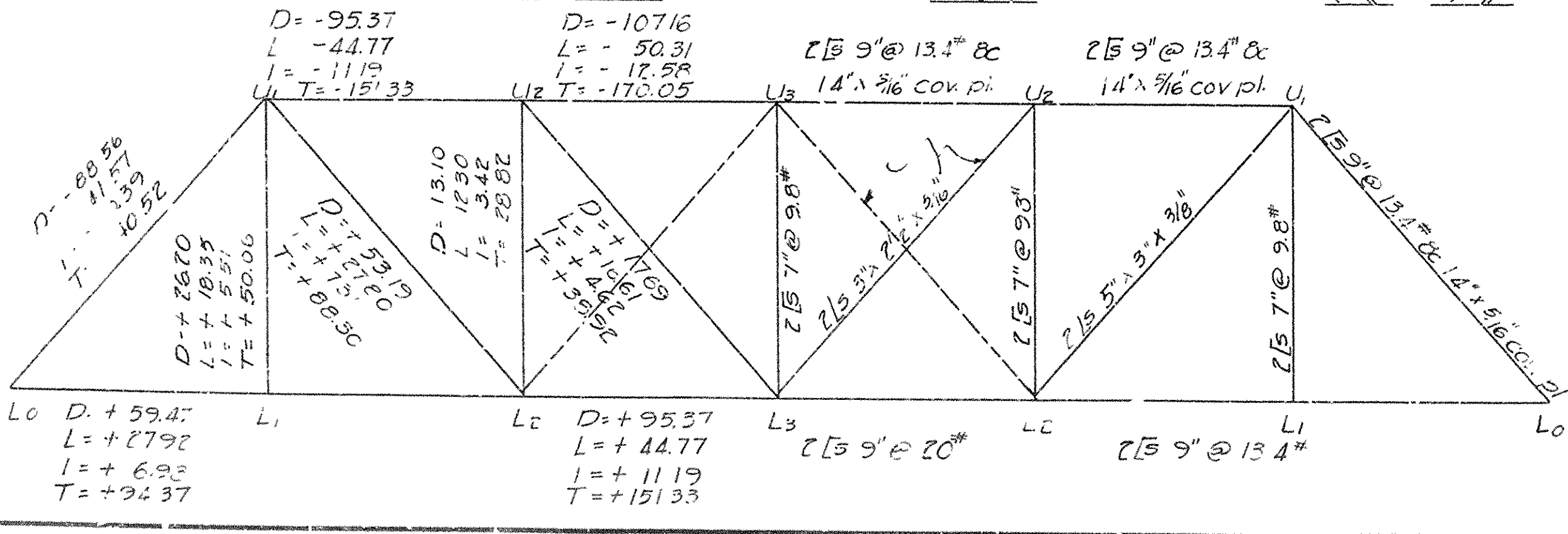
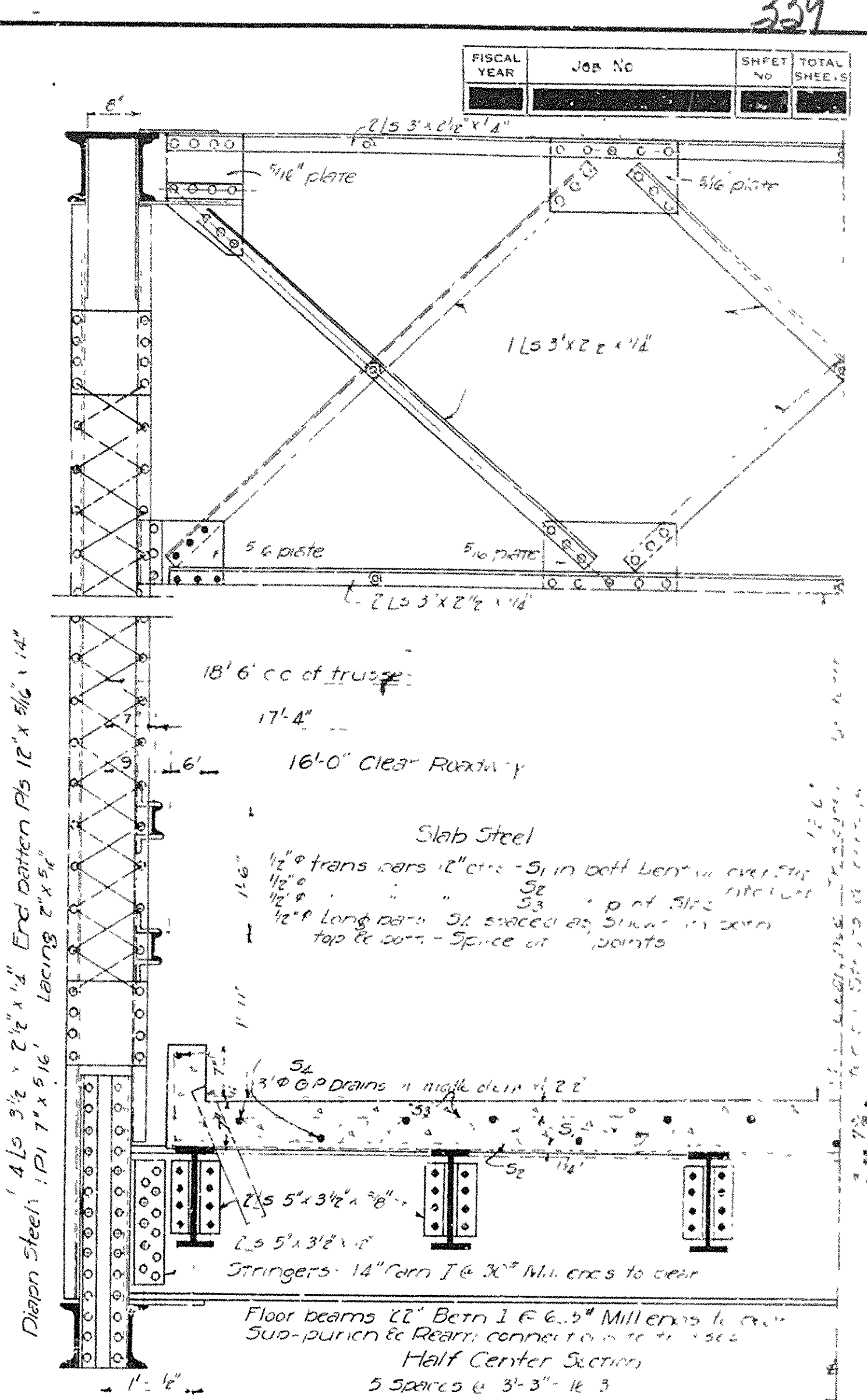
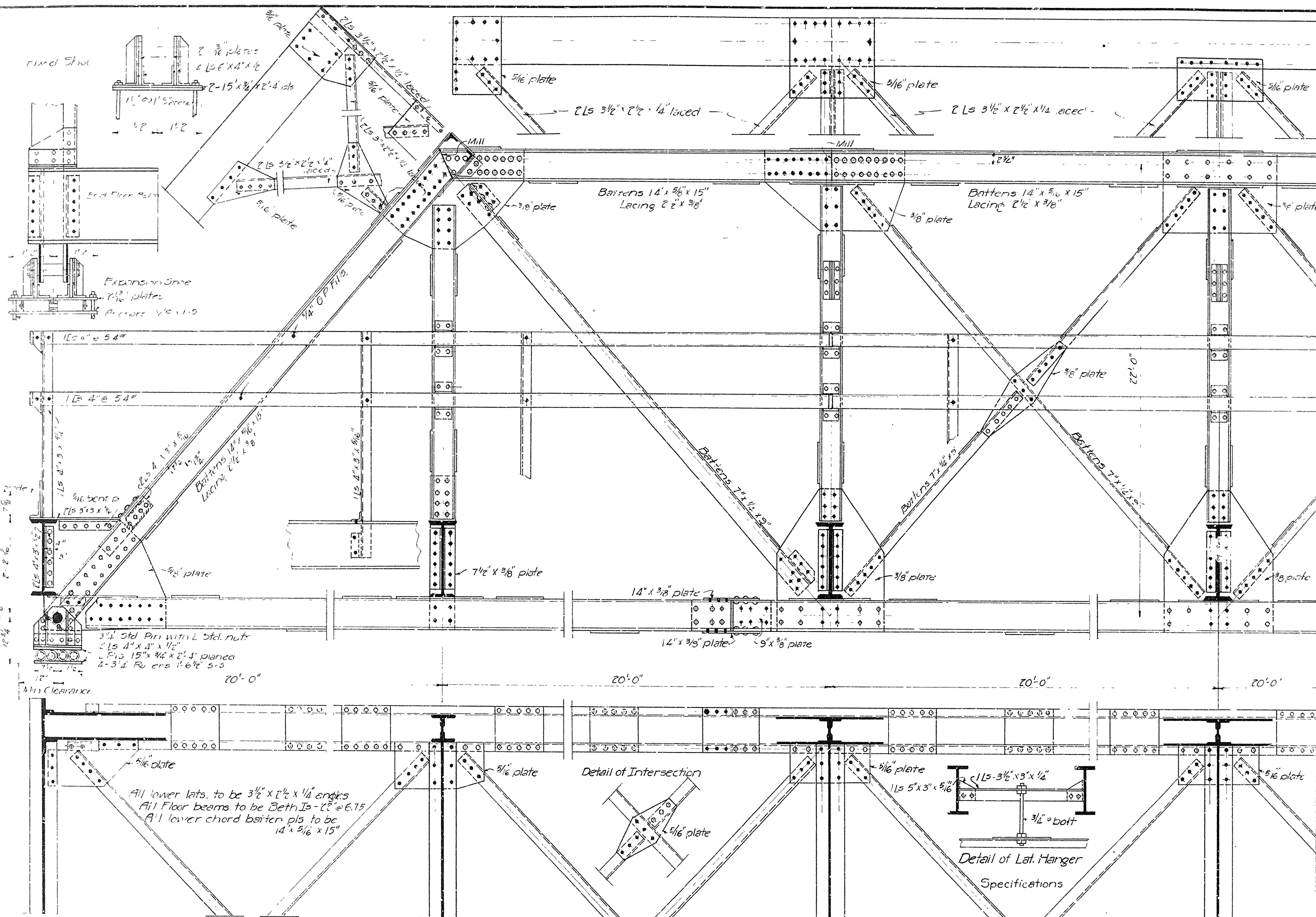


FISCAL YEAR	JOB NO.	SHEET NO.	TOTAL SHEETS
-------------	---------	-----------	--------------



Rivets to be 3/4" in Diameter.  
 Rivet Holes: Sub-punch both shop & field holes in main truss connections 3/16" smaller than rivet specified and run to 1/16" larger than rivet specified after assembly in shop and mark them.  
 All field connections Riveted.  
 Rivet holes in tension members so spaced that only one hole is deducted from each angle at the point of maximum stress.  
 Deduct two Web Holes since one Flange Hole from each Channel at point of Maximum Stress.  
 Snap paint one coat. Red Lead one coat. Linseed Oil.  
 Field paint two coats of different colors as approved by the Engineer.  
 Batter Plates to be spaced not over 3.0' c/c's on Tension Members.  
 Concrete Floor Slab Class 'S' Extra "code" for wear.

Stringers and Floor Beams to be milled to exact length.  
 Members of equal or greater strength may be used in place of members shown here, but payment will be made in accordance with specs shown on this plan.  
 This Drawing is general only. Shop Drawings must be made in compliance with Specifications, must be submitted & approved before fabrication begins.  
 Specifications: Arkansas State Highway Dept. Specifications (Revised) May 30, 1925 and revised.

Expansion Device for Fly Conc Span  
W = 1200"

Expansion Device for M. Span Span  
W = 1200"

<p>Floor Beam Data</p> <p>DL 114 x 10 1/2 x 10 1/2 = 119,090"        LL 114 x 10 1/2 x 10 1/2 = 100,400"        W @ 30' = 301,200"        Tot. M = 2,494,810"</p>	<p>Stringer Data</p> <p>DL M. 7912 5/8 x 20 x 12 = 8 = 237,375"        LL M. 6500 x 20 x 12 = 4 = 590,000"        W @ 30' = 117,000"        Tot. M = 7,437,375"</p>
---	---

Real Sec. Mod. of Beth I - 22 @ 62.5" = 135,75 Sec. Mod. of Carr I - 14 1/2 @ 30" = 41.3

Estimated Quantities

Structural Steel, without Expansion Device	86,630 lb.
Reinforcing Steel 12 # 6 Class 5 Concrete	6,350 lb.
Class 5 Concrete	51.9 cu. yds.

Standard Plan  
 120'-0" Steel Span  
 16'-0" Clear Roadway  
 ROUTE 52 SEC.  
 ARKANSAS STATE HIGHWAY DEPARTMENT  
 LITTLE ROCK, ARK.

Drawn By: H.C. Date: 2/1/28  
 Traced By: E.B.B. Date: 2/2/28  
 Checked By: E.B.B. Date: 2/2/28  
 BRIDGE ENGINEER

Scale: 3/8" = 1'

BRIDGE NO. [redacted] DRAWING NO. 39