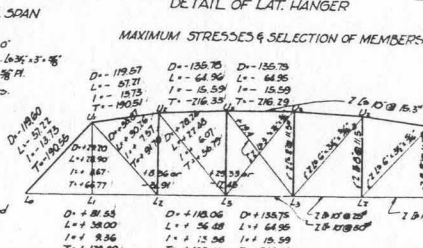
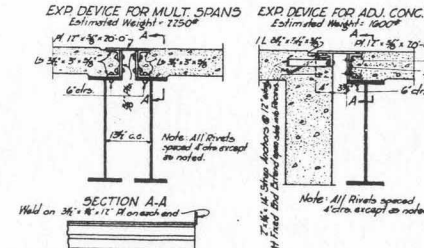
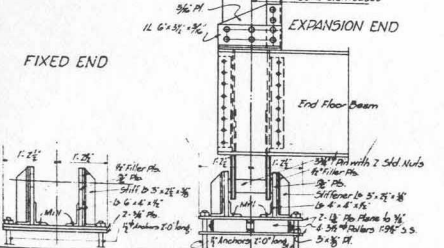
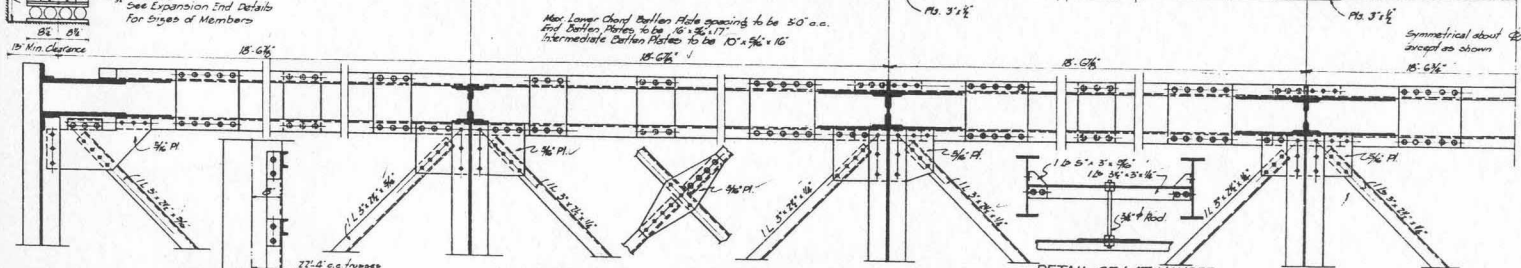
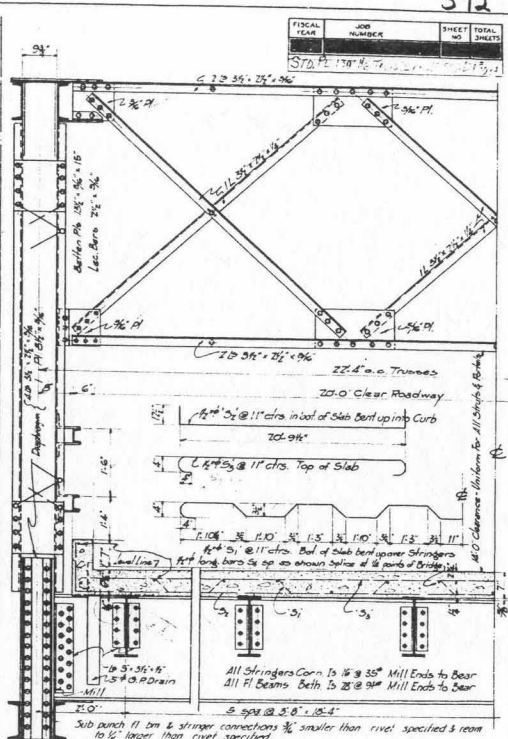
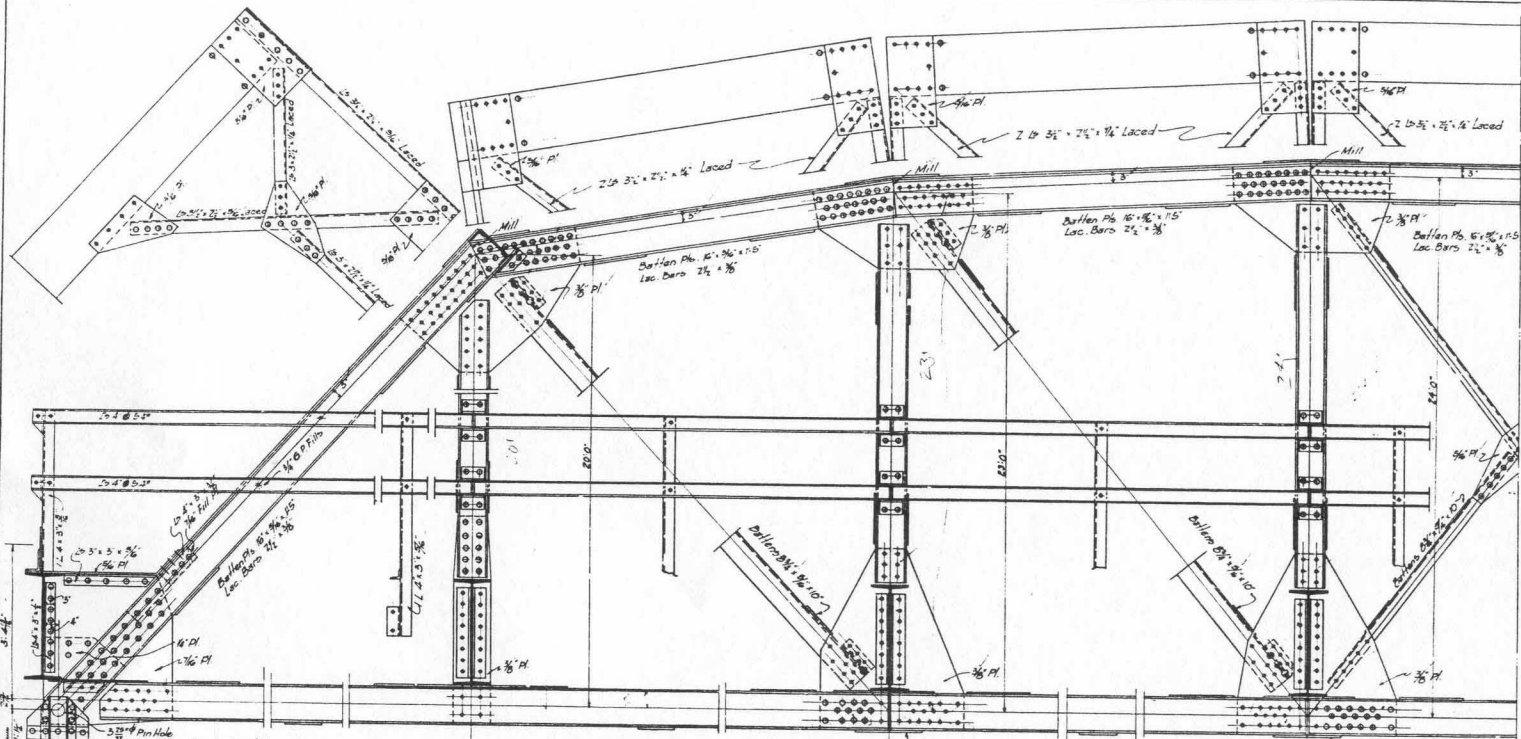


FISCAL YEAR	JOB NUMBER	SHEET NO.	TOTAL SHEETS
1972	178-4	372	375



STRINGER BEAM DATA

D.L.M. = 746.8	18.57	1.5	1570.246
L.L.M. = 970.8	18.57	1.5	2054.436
Imp. @ 30% = 916.020			216.33
Total M.M. = 916.020			4.241
Sec. Mod. Top Flange = 916,020	8000	5089	
Sec. Mod. of Cam = 916,020	8000	5089	

FLOOR BEAM DATA

D.L.M. = 44,800	27.33	1.5	1570.246
L.L.M. = 44,800	27.33	1.5	2054.436
Imp. @ 30% = 4241.013			216.33
Total M.M. = 4241.013			4.241
Sec. Mod. Top Flange = 4241,013	8000	735.61	
Sec. Mod. of Bath = 4241,013	8000	735.61	

SPECIFICATIONS

Live Load: Uniform Load = 75.2 lbs. per sq. ft. of deck
 Concentrated = 2.13 ton trucks as shown
 Imp. load = 100 = 1.1300

Unit Stresses
 Concrete (Strength) = 3000 psi
 Structural & Reinforcing Steel = 18000 psi

Rivets to be 3/4" in diameter.
 Rivet Holes: Sub axis both shop & field holes in main truss connections 1/8" smaller than rivet specified & room to 1/8" larger than rivet specified during shop assembly. Members shall be marked marked and a suitable diagram furnished for erection field connections to be riveted.
 Rivet Holes in tension members so spaced that only one hole is deducted from each angle at point of max stress. Deduct 1 web hole & 1 flange hole from each channel.
 Shop Paint: Load red lead and galv. linseed oil.
 Field Paint: 2 coats of different colors as approved by the engineer.
 Buffing plates shall be spaced not over 30 clips on tension members.
 Concrete Floor Slab to be Class 5 concrete Extra 1" to added for wear.
 Stringers & Floor Beams to be mill cut exact length.
 Members of any or greater strength may be used in place of members shown here but payment will be made in accordance with sizes shown.
 This drawing is general only. Shop drawings must be made in accordance with Specifications. Must be submitted and approved before fabrication to begin.
 Specifications: Ark. State Hwy. Dept. Specifications No. 308, 315 and revised.

ESTIMATED QUANTITIES

Struct. Steel (Not including Exp. Devices) =	173,350 lbs.
Reinforcing Steel =	6,250 lbs.
Class 5 Concrete (Edge to Edge End Floor Beams) =	61,925 cu. yds.

This drawing includes 219 2447 for information only.

STANDARD PLAN
130'-0" HIGH TRUSS SPAN
20'-0" CLEAR RDY.

ARKANSAS STATE HIGHWAY DEPARTMENT
LITTLE ROCK, ARK.

Drawn By: Noe Date: 4-15-70
 Traced By: Noe Date: 5-3-70
 Checked By: Duwe Date: 5-23-70

Scale: 3/4" = 1 ft.

BRIDGE No. 1084 DRAWING No. 1084